

2017 ANNUAL REPORT TO DONORS



EARTH.  
WE'RE ON IT.



Cover: The Rio Cotuhe is a Colombian tributary of the Putumayo River in the Yaguas watershed and lies to the northwest of Peru's Yaguas National Park.



A member of the Field Museum's advance team is lowered from a helicopter during the 2010 rapid inventory in the Yaguas watershed.

# CONTENTS

4

Science

14

Public  
Engagement

24

Honor Roll



*Megacerops coloradensis*, the second fossil found by Elmer Riggs (1869–1963), legendary paleontologist during his first year with the Field Museum.



## Dear Friends,

We are pleased to share a report on the Field Museum's work in 2017—a year of scientific breakthrough, educational outreach, increased attendance, and philanthropy—for which we are grateful to you.

**Your** Museum was the beneficiary of philanthropy totaling \$47 million raised in 2017. And for a second year in a row, the Field saw an increase in admissions with 1.5 million people visiting. They came for events, programs, and special exhibitions developed in-house, including *Ancient Mediterranean: Cultures in Contact* and *Specimens: Unlocking the Secrets of Life*, which showcased Field Museum collections and scientific research that is conducted here everyday.

*Specimens*, in particular, explained why the Museum maintains one of the world's largest natural history collections. The exhibition celebrated the moments when scientists from around the world answered new questions using objects acquired more than a century earlier. And, it proved again that specimens are a snapshot of ecosystems and cultures that are always evolving.

In January 2018, the expertise and patience of the Museum's Keller Science Action Center staff was rewarded when our partners in Peru proclaimed the new Yaguas National Park. For the past 15 years, our conservation biologists and social scientists have worked in this region of the Amazonian rainforest, documenting its biodiversity and advocating for its preservation. In 2017 the Field witnessed and waited for a series of last-minute negotiations as the Peruvian government designated the new national park.

Finally, we celebrate in this *Annual Report to Donors* a transition at the Field Museum. After serving as Board Chair for three years, Connie Keller passed the responsibility to Bill Gantz in March 2018. You can read more about Connie's legacy of leadership at the Field Museum on page 52 of this report.

This report of 2017 accomplishments would not have been possible without your support and active involvement.

With gratitude,

**Wilbur H. Gantz III**  
BOARD CHAIR

**Constance T. Keller**  
BOARD CHAIR (2015–2018)

**Richard W. Lariviere, PhD**  
PRESIDENT AND CEO



*An undescribed fish species from the Yaguas River. Five hundred and fifty species of fish—equal to the freshwater fish diversity in the entire United States—are believed to swim in the lakes, streams, and main branch of the Yaguas River.*



## Yaguas National Park

After dedicating 15 years of hard work to a little-known watershed in northeastern Peru—including two rapid inventories, a dozen books, articles, government documents, and a flurry of last-minute negotiations and technical support in 2017—Keller Science Action Center staff were thrilled by Peru's January 2018 declaration of Yaguas National Park. The new park, which spans an area the size of Yellowstone, grants strict protection to more than half of Peru's 1,000 freshwater fish species and serves as the heart of a large new conservation corridor envisioned by indigenous residents of the Putumayo watershed.

*Amazon Basin emerald tree boas (Corallus batesii) are found throughout the Amazon rainforest and the Yaguas watershed.*



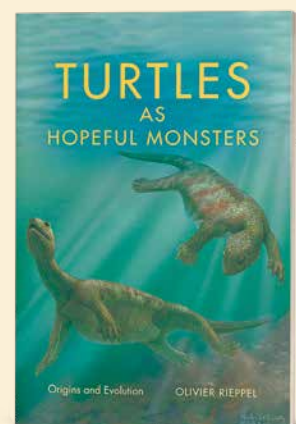


Secoya children in a canoe  
on the Yubineto river in  
remote northern Peru.



### **Turtles as Hopeful Monsters**

Here they are, still with us, boxed up in shells, prehistoric creatures that both predated and outlived the dinosaurs. Despite their highly specialized body plan, turtles show a surprising potential for evolutionary diversification, with 311 living species that conquered a great variety of habitats. Where do turtles come from, and how did their unique anatomy and bodily functions evolve? These are questions addressed in *Turtles as Hopeful Monsters*, a new book by Rowe Family Curator of Evolutionary Biology Olivier Rieppel, PhD, published by Indiana University Press.







### Biodiversity of Mountains

It is a popular hypothesis: As mountains were created by tectonic shifts, habitats expanded, leading to the development of new species from resident ancestors. Research by Associate Curator of Botany Richard Ree, PhD, yielded the first quantitative evidence of this hypothesis for plants in the Hengduan Mountains, a temperate biodiversity hotspot in Southwest China. Ree studied evolutionary relationships of resident species and estimated when, where, and how their ancestors split to form new lineages. The data clearly shows a dramatic increase in the rate of species formation in the Hengduan Mountains during the same geological period, the last eight million years or so, in which the mountains were formed.



**In 2017, Field Museum scientists conducted fieldwork in diverse locations around the world, including southern China, the Philippines, and the Solomon Islands.**

### Archaeology and Globalization

Globalization is often considered a phenomenon exclusive to the modern, Western world. Yet populations from across the earth have been interconnected for millennia. The Museum's Boone Research Scientist Lisa C. Niziolek, PhD, and Macarthur Curator of Mesoamerican Anthropology Gary M. Feinman, PhD, presented a new paper on this topic, along with research scientist Laure Dussubieux, PhD, and colleague Amanda Respass at the 82nd Annual Meeting of the Society for American Archaeology. Titled "Globalization in Southeast Asia's Early Age of Commerce and the Contributions of Maritime Archaeology," the paper synthesizes their ongoing research on the Museum's Java Sea Shipwreck collection and its relevance for illuminating ancient broad-scale human connectivity.

SCIENCE

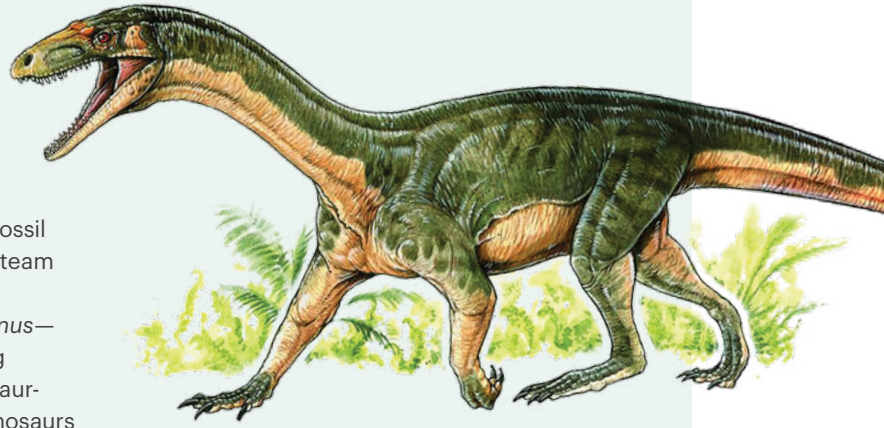


*Left: A metal altar leg found in the Java Sea Shipwreck.*



## Dinosaur Cousins

In a paper published in *Nature*, Associate Curator of Fossil Mammals Ken Angielczyk, PhD, and an international team of university scientists described the earliest known dinosaur relative. Officially named *Teleocrater rhadinus*—meaning “slender complete basin”—this six-foot-long species was surprisingly more crocodilian than dinosaur-like, resembling the monitor lizards alive today. All dinosaurs are archosaurs, a group that contains dinos, birds, pterosaurs (“flying reptiles”), and crocodilians. About 250 million years ago, the archosaurs split into two groups: a bird-like group that evolved into dinosaurs, birds, and pterosaurs, and a crocodile-like group. While the newly-discovered *Teleocrater rhadinus* is the earliest member of the bird side of the family, the authors say it is not a direct ancestor of dinosaurs, but it is the oldest known dinosaur cousin.



An artist's rendering of the species *Teleocrater rhadinus*, an ancient relative of dinosaurs and birds.



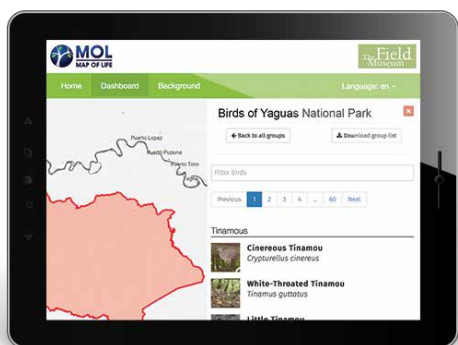
## Digitization of Museum Collections

Robert A. Pritzker Director of Integrative Research Corrie Moreau, PhD, had a new paper published in *Nature, Ecology and Evolution* this year titled: “Digitization of museum collections holds the potential to enhance researcher diversity.” Co-authored by Josh Drew, PhD, and Melanie Stiassny, PhD, of the American Museum of Natural History, the paper highlights how the advent of digitization allows open access to images and specimen data. With open access, communities, especially in the Southern Hemisphere, will have access to the previously out-of-reach collections held mostly in the Global North. This will, in turn, promote researcher diversity and continued learning, both formally by professionals and informally by citizens and educators.

## Giant Rats

In September, Negaunee Postdoctoral Research Fellow Tyrone Lavery, PhD, and colleague, Hikuna Judge, published a description of a new Solomon Islands rodent (*Uromys vika*). The Associated Press’ release was featured in over 1,000 news outlets around the world, toppling SUE as the most popular news about the Field Museum. It was clear from the articles that people were fascinated with how this species was found; a scientist and indigenous landowners worked together with equal determination to record an incredibly rare mammal in a remote part of the world. It demonstrated the public’s appetite for news about the natural world and highlighted exceptional steps taken by Field Museum scientists to find new species.





## Biodiversity Dashboards for Peru, Ecuador, and Colombia

The Conservation Tools team, which has curated three major online identification tools since 1999, launched a brand new one in 2017. Built for land managers in diverse countries where basic information on plant and animal occurrence is scarce, these dashboards use Field Museum collections data to provide species lists and information on conservation action for nearly 1,000 parks. The project, a collaboration with Yale University's Map of Life team and funded by the John D. and Catherine T. MacArthur Foundation, is currently testing the first prototype with the park services in all three countries.

## Calumet National Heritage Area

Since its founding, Field Museum scientists have documented the biological and cultural richness of the industrial Calumet region that lies at the southern end of Lake Michigan. The area stretches from the Pullman National Monument to the Indiana Dunes. Working with many partners and engaging communities throughout this landscape, Keller Science Action Center staff significantly advanced a multi-year process with the formal submission of a critical book-length document to the National Park Service in 2017. The document demonstrates the area's national significance and lays out the feasibility of organizing and administering a new national heritage area.

*The feasibility study was generously supported by ArcelorMittal.*



Calumet National Heritage Area

## Ancient Agricultural Practices

Associate Curator Ryan Williams, PhD, published an article in the November 2017 issue of the *Journal of Environmental Management* with Geologist Ana Cristina Londono, PhD, of Lindenwood University and Engineer Megan Hart, PhD, of the University of Missouri–Kansas City entitled “A change in landscape: Lessons learned from abandonment of ancient Wari agricultural terraces in Southern Peru.” Based on LIDAR survey work they conducted in 2013 in remnant terrace systems in the Andes, the authors argue the archaeological study of ancient terrace systems teaches us that ancient land management practices may be superior to those used today. They further argue that ongoing climate change is impacting agrarian productivity in dryland regions, which cover 40 percent of the earth's land surface, and that rehabilitation of highland terrace systems to full agricultural productivity may be necessary under the overriding shifts in climate towards intense aridity in these regions.

*Right: Associate Curator Ryan Williams, PhD, at the site of Cerro Baul in Southern Peru.*







Live Monarch  
Butterfly release just  
north of the Museum's  
East Doors.



## Monarch Conservation

The Field Museum's Keller Science Action Center, with support from the US Fish and Wildlife Service, developed tools to assist urban communities taking action to save the Monarch butterfly. The tools, found at [fieldmuseum.org/monarchs](http://fieldmuseum.org/monarchs), include an Urban Conservation Guidebook, which uses a combined social-ecological approach to engage citizens and decision makers with strategic pollinator habitat planning. This effort elevated the Field Museum's role as an expert in urban pollinator conservation design and launched the team into partnerships at the local, regional, national, and international scale aimed at reducing the extinction risk for the Monarch butterfly.

## Chicago Community Climate Forum

In December, along with more than 70 civic and environmental organizations, the Field Museum hosted the Chicago Community Climate Forum to feature Chicago stories about innovative climate solutions and celebrate the vision of vibrant communities made more resilient through climate action. Nearly 1,500 community leaders and engaged residents attended the event in Stanley Field Hall. The program featured keynote speaker Mustafa Santiago Ali, former chief of the Environmental Justice Office of the Environmental Protection Agency and now a senior vice president for Hip Hop Caucus. The evening culminated with the unveiling of the *Chicago Agreement on Climate and Community* which outlines a set of principles and commitments to embrace climate solutions with a platform for community members and local organizations to contribute to climate action. The event's success underscored the unique role the Field Museum plays in convening and elevating diverse voices, and in focusing on solutions.







**More than 70 pieces were treated for the *Ancient Mediterranean: Cultures in Contact* exhibition.**

### Additions to Gantz Family Collection Center Staff in 2017



**STEPHANIE HORNBECK**  
Head of Conservation

Stephanie Hornbeck joined the Field staff in February after serving as Director of Caryatid Conservation Services, Inc.—her Miami-based private practice in object and sculpture conservation. She served as Chief Conservator for the Smithsonian Institution's Haiti Cultural Recovery Project after the 2010 earthquake and was awarded the Smithsonian Secretary's Gold Medal for Exceptional Service.



**ADAM FERGUSON, PHD**  
Negaunee Collections Manager of Mammals

Adam Ferguson comes to the Museum from a Fulbright Postdoctoral Fellowship working with wildlife management students at Maasai Mara University in Kenya. He is an evolutionary ecologist with a particular interest in the geographic distribution and evolutionary history of small-to-medium-sized carnivores. Ferguson received a PhD in biology from Texas Tech University.



**STACY DRAKE, PHD**  
Bioarchaeologist

Stacy Drake joined the Museum in March to participate in an MLS-funded project to improve documentation and care of North American human remains within the Museum's collection. She earned her PhD from the University of Texas at Austin, researching prehistoric burial patterns of ancient Maya communities. Prior to the Field, Drake worked at the Texas Archeological Research Laboratory in Austin.



## Conservation Projects

Conservators working in the Field Museum's Anthropology Department were fully involved in documenting and treating objects to prepare for installation in *Ancient Mediterranean: Cultures in Contact*. Conservator Debbie Linn served as the conservation project liaison. The most complicated treatment involved the 1st-century-AD Roman wall painting fragment (fresco technique) from Boscoreale, Italy. In consultation with the Field's conservators, contract conservators from Litas Liparini Restoration Studio stabilized numerous cracks and aesthetically integrated the damage with painted fills, allowing renewed appreciation of the original design motifs depicting an architectural interior.

Traveling objects require specialized packing and shipment to protect them in transit. Conservator JP Brown worked with a Field Museum team to pack, unpack, assess condition, and install *Mummies: Images of the Afterlife* at the American Museum of Natural History (New York) in February 2017. This was the last of four venues for the Field's traveling exhibition.

Head of Conservation Stephanie Hornbeck planned for conservation work on the upcoming multi-year renovation of the *Native North American Hall*. She served as co-principal investigator with Curator Alaka Wali, PhD, for grant proposals to support conservation and community collaboration efforts for the new hall. The grants will supplement support of salaries for a dedicated conservation project team and facilitate Native consultations related to care and storage.



Kwakiutl mask on display in the Alsdorf Halls of Northwest Coast and Arctic Peoples.



### JULIA KENNEDY

#### Collections Assistant for Pacific Anthropology

Julia Kennedy has been a volunteer in Anthropology for more than three years and worked in a term position with the Philippines Collection. She has undertaken collections and database work at Watkins Mill, a Missouri historic site and museum, and has participated in archaeological field work for the Iklaina Archaeological Project in Greece.



### JACKIE POZZA

#### Collections Assistant for North American Anthropology

Jackie Pozza received her MA in Anthropology from the University of Wisconsin-Milwaukee in 2016. Her thesis focused on Oneota copper material from southeastern Wisconsin. She interned at the Missouri History Museum and National Railroad Museum and served as a Collections Management Associate at the Wisconsin Historical Society.





## Transcription Party

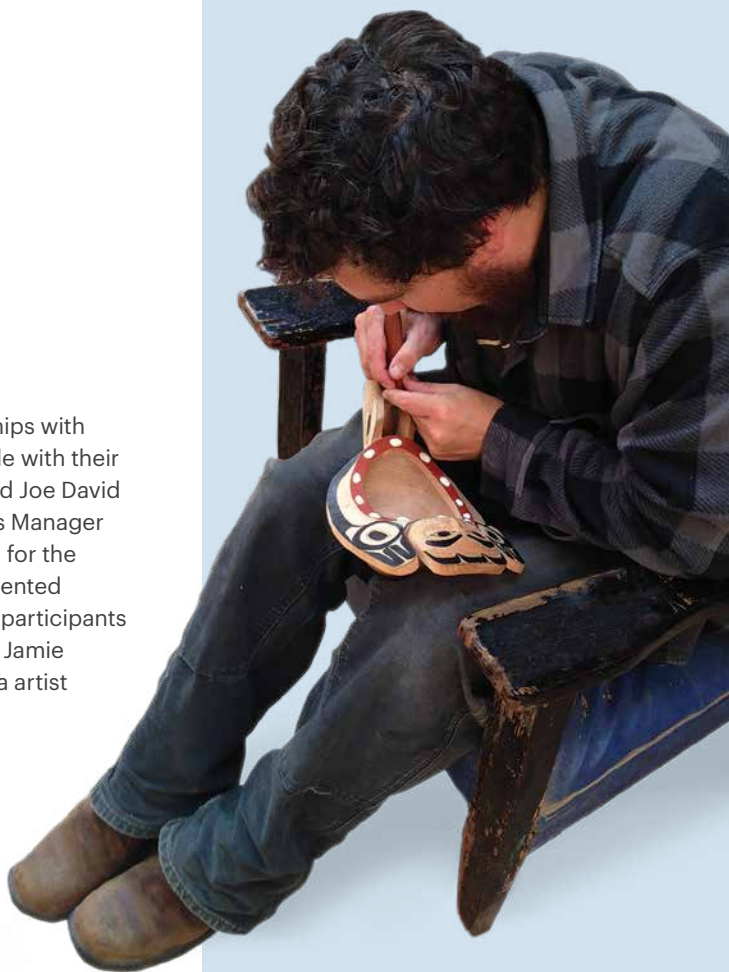
From October 19 to 22, the Gantz Family Collections Center invited members of the public, including college and high school students, to participate in a “transcription party.” This was in conjunction with the Worldwide Engagement for Digitizing Biocollections or WeDigBio, a global event that brings participants online and onsite in digitizing natural history collections. Marking its third year of participation in WeDigBio, the Museum was one of the most significant on-site event hosts, globally, with support from more than 140 grassroots scientists in the Chicago region and beyond. Participants included the general public, Museum docents, and students. The collaborative effort was coordinated by McCarter Collections Manager and Head of Botanical Collections Matt von Konrat, PhD, Collections Assistant Yarency Rodriguez, and botanical collections volunteer Joann Martinec. Over 300 volunteers gathered throughout 2017 to help transcribe vital information from scientific specimens and objects as well as hands-on curation activities.



## Connecting First Nations to Field Museum Collections

In 2017, Anthropology Collections staff continued to build relationships with artists and communities on the Northwest Coast and connect people with their cultural heritage. First Nations artists Marika Swan (Tla-o-qui-aht) and Joe David (Nuu-chah-nulth) visited the Museum in June and invited Collections Manager Jamie Lewis to their community in Tofino, British Columbia, Canada, for the eighth annual Carving on the Edge Festival. At the event, Jamie presented photos and information about the Tla-o-qui-aht items at the Field to participants and spoke with elders about how the Museum cares for collections. Jamie also had the opportunity to visit Haida Gwaii and connect with Haida artist Jaalen Edenshaw, who visited the Museum in 2016. During this visit, Jamie purchased a carved raven bowl from Jaalen for the Museum’s permanent collection. Continued outreach from the Field to indigenous communities is essential for the sustainability of the Museum’s collections and best care practices.

*Right: Haida artist Jaalen Edenshaw carves a raven bowl, which was later purchased by Collections Manager Jamie Lewis.*







Bill Simpson, Head of Geological Collections and McCarter Collections Manager, peruses fossil specimens inside the Gantz Family Collections Center.

### Collections Club

The Collections Club was created in 2017 after volunteers expressed a strong interest following their participation in the 2016 WeDigBio public transcription event. The Collections Club met quarterly with about 50 to 60 active members of broad backgrounds. The major goals of the Club are to:

- **Harness the enthusiasm generated by the WeDigBio events,**
- **Deepen the connection between scientific collections and the general public,**
- **Increase engagement through participatory science, and**
- **Improve and enhance physical specimens and associated data.**

Participants generated data from more than 6,000 objects and specimens and re-packaged over 1,500 bryophyte specimens (mosses and liverworts) collected by Rudolf M. Schuster, PhD, who was previously a Research Fellow at the Field before his death in 2012. The volunteers unwrapped specimens from newspapers—some dating back to the 1960s—and placed them in archival packets. They also transcribed scientific label data from 3,500 bryophyte and fern specimens from around the world. Over 500 exhibition labels were digitally scanned for the anthropological collections. In addition, members examined 35mm photographic slides from the insect collection, which were then rehoused and prepared for cataloging. Dozens of pages from field notebooks of historical expeditions were also examined and transcribed. None of this work could have been achieved without the support and time of our grassroots scientists.



**Collections Club participants generated data from more than 6,000 objects and specimens.**



Volunteers examine and transcribe pages from field notebooks kept in the Museum's archives.



## PUBLIC ENGAGEMENT



Coffin lid for a Roman Egyptian woman featured in *Ancient Mediterranean Cultures in Contact and Mummies*.

## Ancient Mediterranean: Cultures in Contact

In late October, the Museum opened its newest special exhibition, *Ancient Mediterranean: Cultures in Contact*, which showcased 100 rarely seen artifacts from the Museum's Egyptian, Roman, Greek, and Etruscan collections. Each of these objects, such as an Etruscan necklace decorated with Egyptian scarabs, told a small part of a larger story of ancient immigration, assimilation, and connection. The exhibition was especially noteworthy for the way it revealed parallels between the classical world and the interconnectedness of our modern society.



Etruscan black ceramic amphora with designs of seated goddess receiving gifts.





### **The Peregrine Returns: The Art and Architecture of an Urban Raptor Recovery**

The Museum exhibited the story of Assistant Collections Manager Mary Hennen's book *The Peregrine Returns* through the artwork of Artist-in-Residence Peggy Macnamara. The book described the Peregrine Falcon's devastating decline and recovery in the state of Illinois. Using her Chicago Peregrine Program as a case study, Hennen explained how the urban landscape played an essential role in enabling Peregrines to return to the wild. Along with Macnamara's illustrations, the exhibition also displayed a slideshow of photographs by Stephanie Ware, which documented Chicago's Peregrine Falcons and eggs collected before, during, and after the DDT crisis—an environmental catastrophe that caused a thinning of the falcons' eggshells.



**Cultures in Contact showcased 100 rarely seen artifacts from the Museum's Egyptian, Roman, Greek, and Etruscan collections.**





## Jurassic World: The Exhibition

Inside a weather-protected tent, the Field Museum hosted *Jurassic World: The Exhibition*. Visitors came face-to-face with dinosaur animatronics developed by Imagine Exhibitions based on the blockbuster film, *Jurassic World*. This traveling exhibition recreated the iconic dinosaur-filled island from the film, and allowed visitors to form real connections with the Museum's famous fossil collections. In addition to animatronics, visitors interacted with hands-on digital activities, such as a *Velociraptor* training encounter.

Official Travel Partner: United Airlines

*Jurassic World* is a trademark and copyright of Universal Studios and Amblin Entertainment, Inc. Licensed by Universal Studios. All rights reserved.

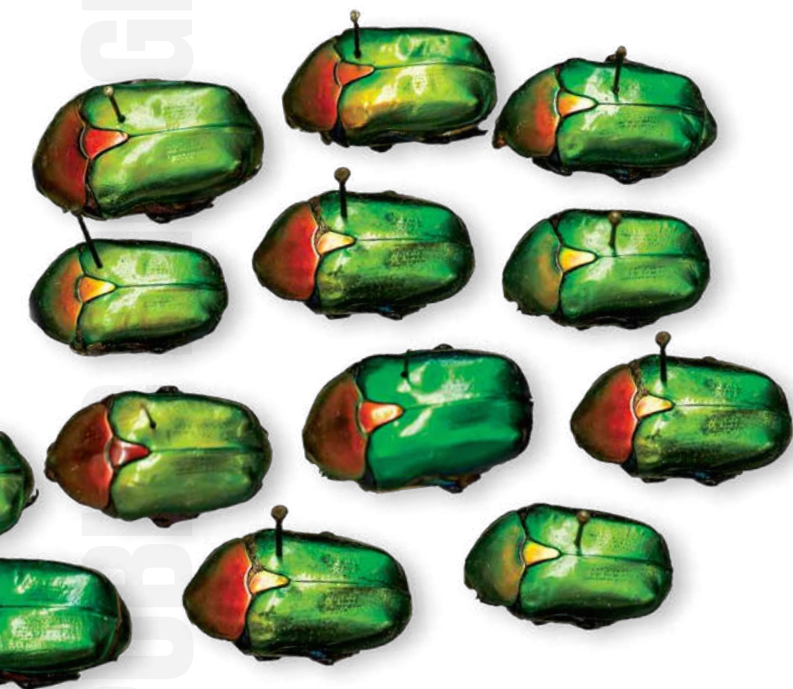
Animatronic  
Parasauralophus  
featured in *Jurassic  
World: The Exhibition*.



## Specimens

Opening in March, *Specimens: Unlocking the Secrets of Life*, was a continuation of the popular "Opening the Vaults" exhibition series, which included *Mummies* (2012) and *Wonders of the 1893 World's Fair* (2013). This series puts on display some of the nearly 40 million objects held in the Museum's collections. An active research institution, the Field employs scientists who make new discoveries based on its artifacts and specimens—many of which were acquired a hundred years ago. For *Specimens*, the exhibitions team and Museum staff hand-picked interesting, significant, or enigmatic specimens that allowed visitors to discover and interact with the Field's extensive research history.

Major Sponsor: Integrated DNA Technologies



Left: These scarab beetles are part of the Museum's collection of 40 million objects and specimens.





### Bushman Care and Move

In 2017, one of the Field Museum's most iconic specimens, Bushman the Gorilla, was cleaned and moved to the East Entrance on the Ground Floor. Bushman lived in the Lincoln Park Zoo from August 15, 1930, until his death on January 1, 1951. He was then processed for taxidermy by Leon Walters, Field Museum taxidermy artist from 1911 to 1954. Bushman's new location at the East Entrance allows school children arriving at the Museum for field trips to engage directly with the specimen through new digital labels and discover his importance to Chicago.



**The Field Museum holds the largest meteorite collection of any private institution.**

### Meteorites

A new permanent exhibition opened in January in the *Grainger Gallery* near the *Malott Hall of Jades*. It features meteorites from the Field Museum's collection, which began with 170 specimens purchased by Marshall Field I following the 1893 World's Columbian Exposition. Now holding the largest collection of meteorites of any private institution, the Field shares its most rare and interesting specimens with visitors, including pieces from the Russian Chelyabinsk air blast in 2013. The exhibition also highlights four fossil meteorites and the secrets they can reveal about our universe.



### Beyond Bollywood: Indian Americans Shape the Nation

A traveling exhibition from the Smithsonian Institution, *Beyond Bollywood* was at the Field Museum from July 29, 2017, to January 7, 2018. The exhibition explored the heritage, daily experience, and diverse contributions of Indian immigrants and Indian-Americans in the United States from the 1700s to the present. The Field collaborated with the Indo-American Heritage Museum to expand the exhibition by the inclusion of twenty objects, which highlighted the civic, economic, scientific, and artistic contributions of Chicagoland's Indian-American community. Among these objects, the Museum displayed the combat boots worn by US Army Sergeant Uday Singh, who died in Iraq in 2003, and the Nobel Prize awarded to University of Chicago astrophysicist Subrahmanyan Chandrasekhar.

*This exhibition is generously supported by The Chicago Community Trust.*





### March for Science

On Earth Day, April 22, the Field Museum led the world's largest March for Science. A crowd of 40,000 gathered in support of scientific research and advocacy. The Field Museum (the only Chicago museum to participate) made a strong showing—about 700 staff, volunteers, donors, and their families marched with the Museum, wearing bright green shirts. Emily Graslie, the Museum's chief curiosity correspondent, was the keynote speaker at the rally before the march from Grant Park to the Museum Campus. Afterward, the Field and other scientific organizations held an expo providing marchers with opportunities to further engage with and support science.

Left: Participants in the 2017 March of Science took a creative approach to voicing their opinions.





*Top: Trustee David D. Hiller speaks in the Native North American Hall at the 10th Anniversary dinner for The Ancient Americas.*



**"Facts are always welcome here, and so are you."**

## Day of Facts

In response to the era of “fake news,” the Field Museum stood up for facts and science in 2017. The Field joined museums, libraries, and cultural institutions around the world for the social media campaign #DayofFacts on February 17. Hundreds of Field Museum staff participated in a video that declared, “Facts are always welcome here, and so are you.” The video went viral, becoming the Museum’s most wide-reaching social media post at the time and was featured in the *Washington Post* and the *Chicago Sun-Times*. It was later screened at the national March for Science in Washington, D.C.





Right: Kevin Willer and Beth Schmidt, Field Associates President (2017), speak at the Museum's Young Professionals Leadership Summit.



### Young Professionals Leadership Summit

On November 11, the Field Associates, in partnership with the All A-Board Alliance, hosted the inaugural Auxiliary Board Leadership Summit. The event was a highly successful and unique conference, which attracted 125 Young Professional Auxiliary Board volunteer leaders and staff liaisons from 65 Chicago area organizations. This summit cemented the Field Associates' role as thought-leaders in Chicago's community. In addition to attending breakout sessions focused on strength-based leadership, the value of diversity, and the alignment of auxiliary and governing boards, guests heard from keynote speaker Kevin Willer of Chicago Ventures about the intersection of philanthropy and the entrepreneurial spirit.



### Field In The Burbs

The first of its kind, the Field's *In The Burbs* program "Does Nature Need Cities?" took place on August 26 at the Oak Park Conservatory. It was designed to bring the Museum's work to our communities of members and donors. Attendees examined specimens and heard from Museum scientists Mark Bouman, PhD, and Abigail Derby Lewis, PhD. Their talk discussed ways to address environmental changes in Oak Park and across the region, as well as new efforts being piloted in Chicago to create pollinator habitats and recover species, such as the Monarch butterfly.



Purple coneflower  
(*echinacea purpurea*)





## Women in Science 2017

On April 25, 2017, the Women's Board of the Field Museum held its annual Women in Science Luncheon with a keynote address by Ilene Gordon, Chairman, President, and CEO of Ingredion, followed by a moderated conversation with Ambassador Fay Hartog-Levin (Ret.). The event, co-chaired by Field Museum Women's Board Members Donna Greenberg and Deanne McLean, drew nearly 400 corporate, civic and philanthropic leaders from throughout Chicago and the region. Surrounding the luncheon and program, the Museum also welcomed 40 young women from Chicago Public Schools for a day of hands-on programming and a chance to network with women in STEM careers. The event raised more than \$225,000 in support of science internships and fellowships for young women at the Field Museum.

The annual Women in Science Luncheon also funds the activities of the Field Museum Women in Science group, which this past year hosted a total of six guest speakers at their monthly meetings in addition to their other events. Among these was Meg Malone, PhD Candidate at the University of Illinois at Chicago who spoke on the eco-evolutionary feedbacks of coral reefs and fishes, and, in February, Bridget Coughlin, PhD, president and of the Shedd Aquarium, spoke on sharks, plastic, and sustainability. Adele Simmons, PhD, president of Global Philanthropy Partnership, and Barbara Risman, PhD, of the University of Illinois at Chicago both spoke on women's and gender issues of the coming era. And in November, Brenna Argall, PhD, of Northwestern University gave a lecture on human anatomy and robotics. The Women in Science Yearly Symposium was held on September 20 and featured Maureen Donnelly, PhD, of Florida International University who spoke on the conservation of Neotropical amphibians.



*Above: Fay Hartog-Levin and Ilene Gordon speak at the Women in Science Luncheon.*



*Top and Right: Chicago Public Schools students hear from 2017 Women in Science Luncheon speaker Ilene Gordon and participate in hands-on butterfly pinning activity following the lecture.*



## First Anniversary of the Grainger Science Hub

In 2017, nearly 300,000 visitors came through the *Grainger Science Hub* and engaged with its Discovery Squad carts. Guided by Field Museum educators and volunteers, visitors engaged with the Museum's collections and research to learn about topics from the oldest minerals ever found on Earth to the Field's work with Peregrine Falcons. The *Grainger Science Hub* also hosted 73 Meet-a-Scientist events, five live Brain Scoop events, and four live Meet-a-Scientist Skype events from the field. Scientists also joined the Hub Team to celebrate National Fossil Day on October 11, the solar eclipse that took place on August 21, and exhibition openings with items from the collections.



**The Grainger Science Hub hosted 73 Meet-a-Scientist events, five live Brain Scoop events, and four live Meet-a-Scientist Skype events.**



## Design Challenges

The Industrial Revolution is a familiar term, but the growing Biomimetic Revolution may be less so. Nature has been engineering through the process of evolution for millions of years, and many of these amazing designs can provide solutions to human problems. Biomimicry Design Stations introduce field trip students to the world of engineering by gaining inspiration from the Museum's collection of natural specimens. Participants are presented with specimens from nature and the man-made creations that were inspired by those objects. They find answers to how leeches help get clothes cleaner, spider webs can save birds' lives, and corals can help us create sidewalks out of pollution. Inspired by these intriguing inventions, students travel the galleries with mini-dry erase boards and markers to find amazing "creature features" and draft their own inventions inspired by those characteristics. The board presentations allow students to share their findings with their peers. They often finish the station wondering what other intriguing features they might see in the museum and what function those structures serve. Whether students are building a better bug trap to help our scientists collect insects or discovering nature's amazing solutions to problems in their own lives, these Biomimicry Design Stations encourage learners to see new relevance in the Field Museum's collections and research by introducing them to the science of engineering.



A Field Museum volunteer leads a design challenge in the Ronald and Christina Gidwitz Hall of Birds.

School Learning Experiences are generously supported by ITW.





### National Recognition for Field For All

The American Alliance of Museums honored the Field Museum for its Field For All program, a new suite of programs, events, and resources originating from the *Crown Family PlayLab*. Designed to make all families feel welcomed at the Museum, Field For All includes Sensory Saturdays and Accessibility Days, which are tailored to meet the needs of guests with a variety of disabilities. Field For All also offers five unique tours of the Museum for guests with special needs to explore outside the *PlayLab*. All programming takes place when the *PlayLab* is closed, and a new app has been developed to help visitors prepare for their specially created visits.



### curioCITY

curioCITY is a career exploration event run by teens for teens. Originally designed as an introductory program to the Field Museum for youth, the event introduces participants to other teens involved in Museum programming. Members of the Museum's Youth Council plan each curioCITY event by choosing topics and presenters. Youth Council members also moderate a conversation between Field Museum scientists and guest speakers, exploring the pathways that led the speakers to their respective careers. Featured guests included Hebru Brantley (artist), Aravind Athiviraham (sports medicine doctor), and Suzanne Smyth (fire investigator). In 2017, more than 90 youth from around the city of Chicago participated in a curioCITY event.

### The Back Room

In conjunction with *Specimens: Unlocking the Secrets of Life*, the Field partnered with Johalla Projects Land and Sea Department and the Chicago Athletic Association to bring a new experience to Chicago. The Back Room—a pop-up bar located in the former pool of the CAA—was designed by Johalla Projects to evoke a vintage scientist's office and included specimens from the Museum. Field Museum scientists presented a workshop, demo, or discussion every night the bar was open through March 25.







# HONOR ROLL

## Board of Trustees

### EXECUTIVE COMMITTEE

Wilbur H. Gantz III  
*Board Chair*

Richard W. Lariviere  
*President and CEO*

Constance T. Keller  
*Chair Emeritus*

John L. Bucksbaum  
*Vice Chair, Facilities and Administrative Services*

John A. Canning, Jr.  
*Vice Chair, Learning*

Dr. Richard A. Chaifetz  
*Vice Chair, Retirement and Benefits*

Richard W. Colburn  
*At Large*

Marsha A. Cruzan  
*Vice Chair, Development*

James S. Frank  
*Vice Chair, Science Action*

Marshall B. Front  
*Vice Chair, Investment*

Judy Greffin  
*Vice Chair, Finance*

Caryn L. Harris  
*At Large*

David D. Hiller  
*Vice Chair, Integrative Research*

William C. Kunkler III  
*Vice Chair, Governance*

Margaret B. MacLean  
*Vice Chair, Collections*

Bobby Mehta  
*Vice Chair, Audit*

Michael O'Grady  
*At Large*

John W. Rowe  
*Vice Chair, Government Relations*

Jessica P. Sarowitz  
*At Large*

Matthew K. Simon  
*Secretary*

Dawn L. Solomon  
*Vice Chair, Exhibitions*

Mark Tebbe  
*Vice Chair, Technology*

W. Rockwell Wirtz  
*Vice Chair, Marketing*

### TRUSTEES

Susan M. Benton

Judson Bergman

Howard B. Bernick

Amy E. Best

Norman R. Bobins

Gregory C. Case

Eduardo F. Conrado

Kenneth W. Coquillette

David Cotton

Mark J. Cozzi

Sir Peter Crane FRS

Kermit R. Crawford

Robert W. Crawford, Jr.

Oscar A. David

Louis T. Delgado

Roger K. Deromedi

Daniel A. Diermeier

Richard Elden<sup>D</sup>

Charles M. Falcone

Jamee C. Field Kane

Marshall Field V

Michael E. Flannery

Ronald J. Gidwitz

Robert H. Gordon

Jack M. Greenberg

Kelly J. Grier

Lewis S. Gruber





## EVOLVE

At EVOLVE, the Field Associates' annual fundraiser, Museum scientists shared their research with guests throughout the night. The event filled Stanley Field Hall and the Hall of Asian Mammals with 325 guests and generated nearly \$50,000 in revenue. Attendees sampled hors d'oeuvres contributed by local restaurants, enjoyed specialty cocktails, live music, dance performances, and more. Held on October 22, the evening was chaired by Matt Berding and Lindsey Soukup.

Adnaan Hamid  
Todd Kaplan  
Michael L. Keiser  
Jeffrey B. Keller  
Richard L. Keyser  
Randolph Kurtz  
Diane von Schlegell Levy  
W. James McNerney, Jr.  
Jack Molloy  
Clare M. Muñana  
Madhavan K. Nayar  
Patricia Marroquin Norby  
Neil S. Novich  
Christopher A. O'Herlihy  
James J. O'Connor, Jr.  
Asutosh Padhi  
Aurie A. Pennick  
John F. Podjasek III  
Peter B. Pond  
Richard S. Price  
John Rau

Douglas P. Regan  
Thomas S. Ricketts  
Michael J. Sacks  
Nydia S. Searle  
Michael E. Severino, MD  
Jai Shekhawat  
Alejandro P. Silva  
Adele S. Simmons  
Thomas S. Souleles  
Mark R. Walter  
Everett S. Ward  
Laura S. Washington  
Melvin D. Williams  
Patrick Wood-Prince  
Jason Wortendyke

## EX-OFFICIO TRUSTEES

Donna L. Greenberg  
Susan Clark McBride  
Jesse H. Ruiz, Esq.  
Ryan S. Ruskin

Beth A. Schmidt  
Liz D. Sharp  
Kevin P. Stineman  
Margaret Stineman  
Ryan VanHolsbeke

## NATIONAL TRUSTEES

Gail K. Boudreaux  
Jean-Claude Brizard  
Jeffrey T. Foland  
Leo F. Mullin  
David C. Parry  
Michael Tang

## LIFE TRUSTEES

Mrs. T. Stanton Armour  
Judith S. Block  
Willard L. Boyd  
Worley H. Clark, Jr.  
James W. Compton  
James A. Delaney III

Thomas E. Donnelley II  
Michael W. Ferro, Jr.  
Wayne E. Hedien  
Pamela K. Hull  
Richard M. Jones  
William H. Kurtis  
Robert B. Loveman  
Scott P. Marks, Jr.  
John W. McCarter, Jr.  
James J. O'Connor, Sr.  
David M. Tolmie  
Robert L. Wesley  
Miles D. White  
William J. White



## Founders' Council

The Founders' Council is the Field Museum's premier annual giving donor society. Members contribute \$2,500 or more to support every aspect of the Museum's mission.

### FOUNDERS' COUNCIL LEADERSHIP COMMITTEE

Thomas S. Ricketts<sup>T</sup>  
Co-Chair (2017 & 2018)

Liz D. Sharp<sup>T</sup>  
Co-Chair (2017)

Kevin P. Stineman<sup>T</sup>  
Co-Chair (2018)

Margaret Stineman<sup>T</sup>  
Co-Chair (2018)

Donna and Peter Freeman  
Mrs. Noel Kaplan

Donna Keller

Robert B. Loveman<sup>T</sup>

John E. McGovern III

Elisabeth C. Meeker

Lanny Passaro

Marty Peterson Shaw

John F. Podjasek III<sup>T</sup>

Ryan S. Ruskin<sup>T</sup>

Allison and Stephen Schmitt

Patricia Schnadig

Heather T. Sparling

Jessica Steffensen

Priscilla A. (Pam) and  
Douglas H. Walter

Everett S. Ward<sup>T</sup>

Ryan B. Whitacre

### \$75,000+ CHAIRMAN'S CIRCLE DISTINGUISHED LEADERSHIP

Greg<sup>T</sup> and Mamie Case  
Charitable Fund

Mr.<sup>T</sup> and Mrs. Michael L. Keiser

Mr. and Mrs.<sup>T</sup> Dennis J. Keller

Mr.<sup>T</sup> and Mrs. Madhavan K. Nayar

Mr. and Mrs.<sup>T</sup> Michael D. Searle

Jai Shekhawat<sup>T</sup>

Mr.<sup>T</sup> and Mrs. W. Rockwell Wirtz

### \$50,000 to \$74,999 CHAIRMAN'S CIRCLE LEADERSHIP

Mr.<sup>T</sup> and Mrs. Norman R. Bobins

Rita and John<sup>T</sup> Canning

Dr.<sup>T</sup> and Mrs. Richard A.  
Chaifetz

Mr.<sup>T</sup> and Mrs. Michael W. Ferro, Jr.

Mr.<sup>T</sup> and Mrs. Marshall Field V

Mr.<sup>T</sup> and Mrs. James S. Frank

Linda and Wilbur<sup>T</sup> Gantz

Mr. and Mrs.<sup>T</sup> King W. Harris /  
Harris Family Foundation

Pamela K.<sup>T</sup> and Roger B. Hull

Mr.<sup>T</sup> and Mrs. Richard L. Keyser

Robert M. and Diane<sup>T</sup> von  
Schlegell Levy

Mr.<sup>T</sup> and Mrs. Bobby Mehta

The Negaunee Foundation

Jeanne M. and John W.<sup>T</sup> Rowe

Cari and Michael<sup>T</sup> Sacks

Jessica<sup>T</sup> and Steve Sarowitz

Michael F. Tang<sup>T</sup>

Robin and Mark<sup>T</sup> Tebbe

Kimbra and Mark<sup>T</sup> Walter

### \$25,000 to \$49,999 CHAIRMAN'S CIRCLE

Anonymous (2)

Mr.<sup>T</sup> and Mrs. Judson Bergman

Howard B. Bernick<sup>T</sup>

Jackie and John<sup>T</sup> Bucksbaum

Mr.<sup>T</sup> and Mrs. Eduardo F.  
Conrado

Mr.<sup>T</sup> and Mrs. Kenneth W.  
Coquillette

Mr.<sup>T</sup> and Mrs. David Cotton

Mark Cozzi<sup>T</sup> and James Goeke

Winnie and Bob<sup>T</sup> Crawford

Marsha Cruzan<sup>T</sup> and  
Thomas McGinnis

Mr.<sup>T</sup> and Mrs. Oscar A. David

Mr.<sup>T</sup> and Mrs. Roger K.  
Deromedi

Edna Foundation

Efroymsen Family Fund<sup>T</sup>

Mr.<sup>DT</sup> and Mrs. Richard Elden

Dr.<sup>T</sup> and Mrs. Charles M. Falcone

Mr. and Mrs. Eugene F. Fama

Jamee Field Kane<sup>T</sup> / The Edith  
B. and Lee V. Jacobs Fund No. 1

Lori and Michael<sup>T</sup> Flannery

Marshall B. Front Family  
Charitable Foundation / Laura  
De Ferrari and Marshall B.<sup>T</sup> Front

Christina and Ron<sup>T</sup> Gidwitz

Judy<sup>T</sup> and Bill Greffin

Kelly<sup>T</sup> and John Grier

Colette Johnston Hedien and  
Wayne E. Hedien<sup>T</sup>

David D. Hiller<sup>T</sup>

Katie Hazelwood and  
Todd Kaplan<sup>T</sup>

Mr.<sup>T</sup> and Mrs. Jeffrey B. Keller

Robert A. Kubicka

William C. Kunkler III<sup>T</sup> and  
Susan Crown / Crown Family  
Philanthropies

Margaret B. MacLean<sup>T</sup>

Clare Muñana<sup>T</sup>

Mr.<sup>T</sup> and Mrs. Neil S. Novich

Mr.<sup>T</sup> and Mrs. Michael O'Grady

Mr.<sup>T</sup> and Mrs. John F. Podjasek III

Alicia and Peter<sup>T</sup> Pond

John<sup>T</sup> and Colette Evans Rau

Cecelia and Thomas<sup>T</sup> Ricketts

Mrs. William L. Searle

Michael E. Severino, MD<sup>T</sup>

Matthew K.<sup>T</sup> and Julie Simon

David J. and Dawn L.<sup>T</sup> Solomon

Cia and Tom<sup>T</sup> Souleles

Kim and Miles<sup>T</sup> White

Melvin D. Williams<sup>T</sup>

Mr.<sup>T</sup> and Mrs. Patrick  
Wood-Prince

Jason Wortendyke<sup>T</sup> and  
Ariel Knowles

### \$10,000 to \$24,999 FOUNDERS' COUNCIL CONSERVATOR

Anonymous (4)

Larry J. Bell

Amy E. Best<sup>T</sup>

Judith S. Block<sup>T</sup>

Carol and Tom Butler

Rebecca Childers Caleel

Mr. and Mrs. Thomas Campbell

Henry T. Chandler<sup>D</sup>

Joyce E. Chelberg

The Comer Foundation Fund

Cecilia and Froilan Concepcion

Mr. and Mrs. James J. Conrad

A. G. Cox Charity Trust

Mr.<sup>T</sup> and Mrs. Kermit R. Crawford

The Crown Family

The Davee Foundation

Janet W. Diederichs

Richard A. Ditton

Janet and Craig Duchossois

Mr.<sup>T</sup> and Mrs. Jeffrey T. Foland

Peggy V. Fossett<sup>D</sup> / Peggy and  
Steve Fossett Foundation

The Robert E. Gallagher  
Charitable Trust

Mr. and Mrs. Richard C. Godfrey

Mr.<sup>T</sup> and Mrs.<sup>T</sup> Jack M. Greenberg

Mr.<sup>T</sup> and Mrs. Lewis S. Gruber

Mary P. Hines

Dr. and Mrs. Wayne J. Holman III

J. Thomas Hurvis

Reinhardt H. and  
Shirley R. Jahn Foundation

Mrs. Noel Kaplan

Mr. and Mrs. Keith Kizziah /  
Malott Family Foundation

The Knowles Foundation

Laurie and Rich Kracum

Mr.<sup>T</sup> and Mrs. Randolph Kurtz

Jan and Richard W.<sup>TE</sup> Lariviere

Lavin Family Foundation

Gail J. and Robert B.<sup>T</sup> Loveman

Mr.<sup>T</sup> and Mrs. Scott P. Marks, Jr.

Mr.<sup>T</sup> and Mrs. John W.  
McCarter, Jr.

Kennon P. McKee, PsyD

Mr.<sup>T</sup> and Mrs. Leo F. Mullin

Mr.<sup>T</sup> and Mrs. Chris O'Herlihy

Mr. and Mrs. William A. Osborn

Renaissance Charitable  
Foundation Inc.

Joan and Paul Rubschlager

Mr. and Mrs. Romolo Sidoli

Mr.<sup>T</sup> and Mrs. Alejandro P. Silva

June M. Staackmann

Judith B. Sugarman

### \$5,000 to \$9,999 FOUNDERS' COUNCIL SURVEYOR

Anonymous (2)

Mrs. T. Stanton Armour<sup>T</sup>

E. M. Bakwin

Verna L. Baughman, MD

Susan M. Benton<sup>T</sup>

Mr. and Mrs. David W. Bernauer

Mr. and Mrs. Andrew W. Brown



Rosemarie and  
Dean L. Buntrock

Linda and Vincent Buonnano

Mr. and Mrs. Theodore R. Butz  
/ The Butz Foundation

Callie Anne and W.<sup>T</sup> Clark

Mary and Jim Costello

Mark Crane

Daphne and John Cunningham

Dr. and Mrs. Tapas K. Das Gupta

Mr. and Mrs. Mark D. Dawson

Cheryl and Michael Del Campo

Mr. and Mrs. James M. Denny

Thomas R. Doler

Monica Donath

Eldred-Harland Charitable  
Fund at The Chicago  
Community Foundation

Hattie A. and Marie V. Fatz  
Foundation

Harve A. Ferrill

Mr. and Mrs. Peter D. Fischer

Sonia A. Florian

Ginny and Peter Foreman

Mr. and Mrs. Philip M.  
Friedmann

Mr. and Mrs. Camillo Ghiron

Mr. and Mrs. James J. Glasser

Mr. and Mrs. John K. Greene

Mr. and Mrs. William J. Hagenah

Mr. and Mrs. Matthew C. Harris

Beverly and Warren Hayford

Lorraine M. Hurt and  
George M. Ingram

Anna Marie and Jerry Kelly

Mr. and Mrs. T. Eric Kilcollin

Bruce and René Lauer

Liz and Eric Lefkofsky

Mr. and Mrs. Clark Lewey

Sandra L. Mueller

Mary Jane Nordlund

Mr.<sup>T</sup> and Mrs. James J.  
O'Connor, Jr.

China I. Oughton

Mr. and Mrs. Charles W. Palmer

Terry and Lanny Passaro

Mr. and Mrs. Maurice Patrick

Mr. and Mrs. Donald W.  
Patterson

Mr. and Mrs. Norman Perman

Mr. and Mrs. Robert Raimondi

Helen S. Reed

D. Roskin

Mr. and Mrs. Robert J. Sanborn

Karla Scherer

Mr. and Mrs. Gordon Segal /  
Segal Family Foundation

Roger D. Shaw, Jr.

Adele S. Simmons<sup>T</sup> and  
John L. Simmons

Richard M. Skolly and  
Kate A. Feinstein

The Smart Family Foundation

Harold B. Smith

Mr. and Mrs. Neele E. Stearns, Jr.

Wendy Strauss

Carol C. Swift

Mr. and Mrs. John W. Taylor III

Mr. and Mrs. Ed Thayer

Mr.<sup>T</sup> and Mrs. David M. Tolmie

Mrs. Herbert A. Vance

Mr. and Mrs. Robert J. Wagner

Everett S. Ward<sup>T</sup> and Iris K. Sims

Stacey Weltmer

Barbara H. West<sup>D</sup>

William J. White<sup>T</sup>

The Abra Wilkin Fund

Wolff Income Charitable Fund

Mr. and Mrs. Kenneth J. Yager

**\$2,500 to \$4,999  
FOUNDERS' COUNCIL  
MEMBER**

Anonymous (8)

Mr. and Mrs. Gary D. Ahlquist

Mr. and Mrs. Douglas W. Allvine

The Allyn Foundation

Birute J. Apke

Michael D. Arnold and  
Monica Wallace

Lucinda M. and David Baier

Susan and Stephen Baird

Randolph and Lorraine Barba

Mr. and Mrs. Aaron A. Barlow

Kara and Thomas Barta

Mr. and Mrs. Philip S. Beck

Deborah A. Bekken<sup>E</sup> and  
Richard G. Kron

Matthew Benoit and  
Cathleen Dohrn

Mr. and Mrs. Stephen P. Bent

Mr. and Mrs. Harrington Bischof

Mr. and Mrs. Andrew K. Block

The Bloom-Kessler Family



**Giving Day 2017**

On October 11, the Field Museum's annual Giving Day energized communities of supporters, raising \$167,000 from 600+ donors in just one day. The theme—Science Matters; Science It Forward—built on the momentum of Day of Facts and the March for Science held earlier in the year. Staff giving continued to be a noteworthy feature of Giving Day with nearly 30 percent of staff members making a philanthropic contribution (up from 11 percent two years earlier).

R. Darrell Bock and  
Renee Menegaz-Bock

Hyacinth and Le Monte G.<sup>E</sup>  
Booker, Sr.

Mr. and Mrs. John J. Borland, Jr.

Lori Breslauer<sup>E</sup>

Michelle and David Buck

Campbell Family Foundation

Joan and Tom Castino

Mr. and Mrs. James  
Casselberry, Jr.

Ceres Foundation

Mr. and Mrs. John S. Chapman

Annette and Thomas Cole

James W. Compton<sup>T</sup>

Mr. and Mrs. Patrick Corrigan

William Cox

Kevin Coughlin and  
Sue Burzawa

Mr. and Mrs. William A. Crane

Jim W. Croft and  
Marilyn Martinson Croft

Rebecca E. Deaton

Mr. and Mrs. Robert O.  
Delaney, Jr.

The DeThorne Family<sup>E</sup>

Owen Deutsch and  
Rona Talcott

Mr. and Mrs. James W.  
DeYoung

Candice and Scott Dias

Daniel Diermeier<sup>T</sup> and  
Ariela Lazar

Richard A. Domanik and  
Janice Y. Domanik

The Donnelley Foundation<sup>T</sup>

Mr. and Mrs. John Draper

Glenda W. Duncan

Mignon Dupepe and  
John Snyder

Thomas E. Durica and  
Susan Jacob

Jon Ekdahl and Marcia Opp

Mr. and Mrs. Samuel H. Ellis  
La and Philip Engel

Mrs. Jerome L. Ettelson

Mr. and Mrs. Rob Farr

Mr. and Mrs. W. James Farrell

Mr. and Mrs. Alexander H. Faurot

Mary and Bruce Feay

Mr. and Mrs. Kenneth P. Fischl

Donna and Peter Freeman

Mr. and Mrs. Joel M. Friedman

Christine D. Giannoni<sup>E</sup>

Donna J. Godel and  
Roger E. Godel

Mark Gold

Mary L. Gorno

Donald Grasso  
 Delta A. Greene  
 Joyce and Timothy Greening  
 Stephanie and Greg Guyett  
 Sally A. Hagan  
 Tonja Rizai Hall  
 Mr. and Mrs. Dean M. Harrison  
 Mr. and Mrs. Thomas Z. Hayward, Jr.  
 Mr. and Mrs. Duncan Healy  
 Mr. and Mrs. Ted Helwig  
 Mr. and Mrs. Patrick J. Herbert III  
 Kimberlee S. Herold  
 Robert Hevey, Jr. and Constance M. Filling  
 Mr. and Mrs. John L. Hines  
 Peggy L. Hoberg  
 Mr. and Mrs. Thomas H. Hodges  
 Mr. and Mrs. Richard M. Holm  
 Mr. and Mrs. Arthur Holzheimer  
 Maria R. Hrycelak, MD  
 Ying Hsu and Donald R. Monson  
 Laurie Huget and Werner Huget  
 Jill Hutchison and David Rosholt  
 Irish Woods Foundation  
 Mr. and Mrs. James M. Johnson  
 Pamela MacVicar Johnson  
 Lynn and George Jones  
 Linda M. Jung  
 Kathleen and Alex Kallend  
 Charles L. Katzenmeyer<sup>E</sup>  
 Mr. and Mrs. Eric Kauffman  
 Mr. and Mrs. Eric Kennedy  
 The King Family Foundation  
 Mr. and Mrs. William J. Kirby  
 Dennis and Kathleen Klaeser  
 Becky and Lester Knight  
 Mr. and Mrs. Glenn A. Kolososki  
 Mr. and Mrs. Jim Korompilas  
 Patricia Kosmerl  
 Mr. and Mrs. Lawrence J. Krema  
 Mr. and Mrs. Michael Kuta  
 Mary Lawlor  
 Wende L. Fox Lawson and Lawrence James Lawson  
 Mr. and Mrs. Jordan Lowe  
 Ilene and Lawrence Lubell  
 Mr. and Mrs. John Luscombe  
 Douglas R. MacAyeal and Linda A. MacAyeal  
 Thomas T. Macejko, Jr. and Amanda Maw Macejko  
 Mr. and Mrs. John W. Madigan  
 Mr. and Mrs. Timothy J. Malloy  
 Sandy and Jerry Manne  
 Todd Marek and Vana Thayu  
 Marie A. Marotta  
 Jamie C. Marshall and Richard Sobkowiak  
 Mr. and Mrs. John E. McGovern III  
 McKee Family Foundation  
 Agnes McKinney<sup>D</sup>  
 Mr. and Mrs. John McLean  
 Mr. and Mrs. Charles P. McQuaid  
 Erma S. Medgyesy  
 Elisabeth C. Meeker  
 Pamela G. Meyer  
 Pamela L. Miles  
 Moller Family Foundation  
 Mr. and Mrs. Thomas M. Mulcahy  
 Mr. and Mrs. Tom Murray  
 Mr. and Mrs. Richard Naponelli  
 Alexandra C. and John D. Nichols  
 James H. Niehoff and Jolie R. Macier  
 Mr. and Mrs. Craig Niemann  
 Christina J. Norton and John A. Biek  
 Mr.<sup>F</sup> and Mrs. John R. O'Connell  
 Mr.<sup>T</sup> and Mrs. James J. O'Connor, Sr.  
 Virginia O'Neill  
 Stephanie Ortel  
 The Richard Laurence Parish Foundation  
 Dr. and Mrs. William Parkhurst  
 Jo Ann and Joseph Paszczyk  
 Robin and Matthew Patinkin  
 Mr. and Mrs. Robert P. Perkaus, Jr.  
 Denise Peterson  
 Mr. and Mrs. Craig A. Pickenpaugh  
 Beverly and Stephen Pinaire  
 Mr. and Mrs. Charles J. Pitman  
 Mr. and Mrs. Charles S. Potter, Jr.  
 Mr. and Mrs. Paul C. Poy  
 Irwin Press and Andra Press  
 Claire F. Prussian  
 Mr. and Mrs. John W. Puth



### Conservation Celebration

On April 18, the Field Museum presented the 2017 Parker/Gentry Award to marine science researcher David E. Vaughn, PhD. This annual award is presented at the Conservation Celebration to a leader in conservation biology. Dr. Vaughn is the executive Director of the Mote Tropical Research Lab in the Florida Keys, leading Mote's Coral Reef Restoration Program to re-establish the underwater forest.

James A. Radtke and Susan A. Kressin  
 Mr. and Mrs. William Radzevich  
 Ginevra Stirling Ranney<sup>E</sup> and Ben Ranney  
 Mr. and Mrs. Miles Ridgway  
 Roberts Family Foundation  
 Anita J. Rogers  
 Mr. and Mrs. Phillip B. Rooney  
 Mr. and Mrs. Jeffrey S. Ross  
 Mr. and Mrs. Norman J. Rubash  
 Susan B. Rubnitz  
 Ryan Ruskin<sup>T</sup> and Michael Andrews  
 Rusty<sup>E</sup> and Debbie Russell  
 David W. Ruttenberg  
 Mr. and Mrs. Patrick G. Ryan  
 Linda E. Salisbury  
 Yousuf and Dilara Sayeed  
 Barbara M. Schleck and Gary M. Ropski  
 Douglas M. Schmidt  
 Mr. and Mrs. Richard H. Schnadig  
 Karen and Frank Schneider  
 Barbara and Tom Schnitzer  
 Mr. and Mrs. Sean Scott  
 Mr. and Mrs. Michael Sebastian  
 Mr. and Mrs. Alan Sebulsky  
 Monica and Stephen Sentoff  
 Robert M. Shafis<sup>E</sup> and Carol A. Erickson  
 Mr. and Mrs.<sup>T</sup> Jeffrey S. Sharp  
 Sally Sharp  
 Bob and Charlene Shaw  
 Pam and Tom Sheffield / JS Charitable Trust  
 Q. Phia Sherry and Neal Sherry  
 Kass F. Sigal  
 Dolores Silverman  
 Toni Sandor Smith  
 Elizabeth L. Snyder  
 Amanda A. Sonneborn and Peter R. Malecki  
 The Sparacio Family  
 Heather T. Sparling and Jason Bakk



Barbara A. Speer  
 Thomas A. Stemwedel and  
 Paula A. Borg  
 Liz Stiffel  
 Doug Stiles  
 Mr.<sup>T</sup> and Mrs.<sup>T</sup> Kevin Stineman  
 Kevin L. Stoeckel and  
 Emily Heisley Stoeckel  
 Mr. and Mrs. Ivan G. Strauss  
 Steven Strohmeier<sup>E</sup> and  
 Josie Brown  
 Mr. and Mrs. Harvey J. Struthers  
 Arthur Susman and  
 Carole Stone  
 Mr. and Mrs. Robert N. Szalay  
 Jenny and Flip Templeton  
 Carol and Jim Tichy  
 Glenn and Jacqueline Tilton  
 Mr. and Mrs. Thomas Tisbo  
 Mr. and Mrs. James A. Tuchler  
 Anne Van Wart and  
 Michael Keable  
 Mr. and Mrs. Thomas F. Veldman  
 Mr. and Mrs. David J. Vitale  
 Mr. and Mrs. Frederick G.  
 Wacker III  
 Nancy L. Wald<sup>D</sup>  
 Mr. and Mrs. Douglas H. Walter  
 Mr. and Mrs. John R. Walter  
 Dilnaz and Qaiser Waraich  
 Paul Waters and Nancy Bugajski  
 Carrie and Jay Weaver  
 Amy Welzer  
 Ryan B. Whitacre and  
 Katherine T. Donaldson  
 Jean Ann White and  
 Helene Beisecker  
 Crystina Williams and  
 Amy Heaney  
 Claudia L. Winkler  
 Nancy Hamill Winter  
 Mr. and Mrs. William E. Wolf  
 Mr. and Mrs. Tom Wotovich  
 Mr. and Mrs. Robert Zentner

## 2017 Contributions

Philanthropy at the  
 Field Museum supports  
 the institution's people  
 and programs. These  
 contributions and grants  
 promote scientific research,  
 create world-famous  
 exhibitions, provide  
 opportunities for education,  
 and keep the Museum's  
 doors open 364 days a year.

### \$5,000,000+

Anonymous  
 The Grainger Foundation, Inc.  
 Kenneth C. Griffin  
 Charitable Fund

### \$1,000,000 to \$4,999,999

Anonymous  
 Bobolink Foundation  
 Rita and John<sup>T</sup> Canning  
 Efroymsen Family Fund<sup>T</sup>  
 Linda and Wilbur<sup>T</sup> Gantz  
 ITW  
 Mr.<sup>T</sup> and Mrs. Michael L. Keiser  
 Mr. and Mrs.<sup>T</sup> Dennis J. Keller  
 Robert R. McCormick  
 Foundation  
 The Negaunee Foundation  
 Jeanne M. and John W.<sup>T</sup> Rowe

### \$500,000 to \$999,999

Anonymous  
 Mr.<sup>T</sup> and Mrs. Marshall Field V  
 Hamill Family Foundation  
 Magellan Corporation  
 National Science Foundation  
 The Andrew W. Mellon  
 Foundation  
 Daniel F. and Ada L. Rice  
 Foundation

### \$100,000 to \$499,999

Anonymous (3)  
 AbbVie  
 American Council  
 of Learned Societies  
 Aon  
 ArcelorMittal  
 The Barker Welfare Foundation  
 Barbara<sup>E</sup> and Roger Brown

Jackie and John<sup>T</sup> Bucksbaum  
 Winnie and Bob<sup>T</sup> Crawford  
 D & R Fund / Glasser and  
 Rosenthal Families  
 Mr.<sup>T</sup> and Mrs. Roger K. Deromedi  
 Discover  
 The Duchossois Family  
 Foundation  
 Ernst & Young LLP  
 Mr.<sup>T</sup> and Mrs. Michael W. Ferro, Jr.  
 Jamee Field Kane<sup>T</sup> / The Edith  
 B. and Lee V. Jacobs Fund No. 1  
 Lori and Michael<sup>T</sup> Flannery  
 Mr.<sup>T</sup> and Mrs. James S. Frank  
 Julian Grace Foundation  
 Karen Z. Gray-Krehbiel and  
 John H. Krehbiel, Jr.  
 Integrated DNA Technologies  
 Institute of Museum and  
 Library Services  
 The Edith B. and Lee V. Jacobs  
 Fund No. 3  
 Edgar D. Jannotta, Sr.  
 John D. and Catherine T.  
 MacArthur Foundation  
 Fay and Daniel Levin  
 Barry L. MacLean  
 Chauncey and Marion D.  
 McCormick Family Foundation  
 Mr.<sup>T</sup> and Mrs. Bobby Mehta  
 Gordon E. and Betty I. Moore  
 Foundation  
 National Park Service  
 Nicor Gas  
 Northern Trust  
 Mr.<sup>T</sup> and Mrs. John F. Podjasek III  
 Prince Charitable Trusts  
 The Searle Family Funds at  
 The Chicago Community Trust  
 Mr. and Mrs.<sup>T</sup> Michael D. Searle  
 Bob and Charlene Shaw  
 Jai Shekhawat<sup>T</sup>  
 Rose L. Shure<sup>D</sup>  
 Matthew K.<sup>T</sup> and Julie Simon  
 Cia and Tom<sup>T</sup> Soules  
 Robin and Mark<sup>T</sup> Tebbe  
 United Airlines  
 Wirtz Corporation  
 Mr.<sup>T</sup> and Mrs. W. Rockwell Wirtz  
 Mr.<sup>T</sup> and Mrs. Patrick  
 Wood-Prince

### \$50,000 to \$99,999

Anonymous (2)  
 Abbott  
 Paul M. Angell Family  
 Foundation  
 Howard B. Bernick<sup>T</sup>  
 Mr.<sup>T</sup> and Mrs. Norman R. Bobins  
 The Brinson Foundation  
 Greg<sup>T</sup> and Mamie Case  
 Charitable Fund  
 Dr.<sup>T</sup> and Mrs. Richard A. Chaifetz  
 Chicago Blackhawks Foundation  
 The Chicago Community Trust  
 Crown Family Philanthropies  
 Gaylord & Dorothy Donnelley  
 Foundation  
 Exelon  
 Marshall B. Front Family  
 Charitable Foundation / Laura  
 De Ferrari and Marshall B.<sup>T</sup> Front  
 Christina and Ron<sup>T</sup> Gidwitz  
 Sally Mead Hands Foundation  
 Harris Family Fund of The New  
 York Community Trust  
 Mr. and Mrs.<sup>T</sup> King W. Harris /  
 Harris Family Foundation  
 Stephanie C. Harris / The Edith  
 B. and Lee V. Jacobs Fund No. 2  
 Betty S. Hess<sup>D</sup>  
 David D. Hiller<sup>T</sup>  
 Pamela K.<sup>T</sup> and Roger B. Hull  
 JPMorgan Chase & Co.  
 Katie Hazelwood and  
 Todd Kaplan<sup>T</sup>  
 Mr.<sup>T</sup> and Mrs. Jeffrey B. Keller  
 Mr.<sup>T</sup> and Mrs. Richard L. Keyser  
 Mr. and Mrs. Fred A. Krehbiel  
 Bruce and René Lauer  
 Robert M. and Diane<sup>T</sup> von  
 Schlegell Levy  
 Margaret B. MacLean<sup>T</sup>  
 Andrew H. Mathis  
 Motorola Solutions Foundation  
 Mr.<sup>T</sup> and Mrs. Madhavan K. Nayar  
 Alexandra C. and John D. Nichols  
 Karen A. Nordquist  
 Norwottock Charitable Trust  
 Polk Bros. Foundation  
 Alicia and Peter<sup>T</sup> Pond  
 Betty D. Prout<sup>D</sup>

Quest Foundation  
 John<sup>T</sup> and Colette Evans Rau  
 Cari and Michael<sup>T</sup> Sacks  
 Mr. and Mrs.<sup>T</sup> Jeffrey S. Sharp  
 Adele S. Simmons<sup>T</sup> and  
 John L. Simmons  
 Michael F. Tang<sup>T</sup>  
 U.S. Bank  
 U.S. Fish and Wildlife Service  
 Kimbra and Mark<sup>T</sup> Walter  
 Kim and Miles<sup>T</sup> White

#### **\$25,000 to \$49,999**

Anonymous (3)  
 The Robert and Isabelle Bass  
 Foundation, Inc.  
 Mr.<sup>T</sup> and Mrs. Judson Bergman  
 Judith S. Block<sup>T</sup>  
 The Boeing Company  
 Rosemarie and Dean L.  
 Buntrock  
 Chase Private Client  
 Joyce E. Chelberg  
 Elizabeth F. Cheney Foundation  
 Citadel LLC  
 Mr.<sup>T</sup> and Mrs. Eduardo F.  
 Conrado  
 Mr.<sup>T</sup> and Mrs. Kenneth W.  
 Coquilllette  
 Mr.<sup>T</sup> and Mrs. David Cotton  
 Mark Cozzi<sup>T</sup> and James Goeke  
 Rose Marie Craig<sup>D</sup>  
 Marsha Cruzan<sup>T</sup> and  
 Thomas McGinnis  
 Janet and Craig Duchossois /  
 The Duchossois Group, Inc.  
 Edna Foundation  
 Mr.<sup>DT</sup> and Mrs. Richard Elden  
 Dr.<sup>T</sup> and Mrs. Charles M. Falcone  
 Mr. and Mrs. Eugene F. Fama  
 Mary and Bruce Feay  
 The Field Foundation of Illinois  
 Jamee J. Field  
 Ford Motor Company Fund  
 Dr. Evelyn Frank Trust  
 Julius N. Frankel Foundation  
 GCM Grosvenor  
 Goldman, Sachs & Co.  
 Ellis Goodman Family  
 Foundation  
 Mr.<sup>T</sup> and Mrs.<sup>T</sup> Jack M.  
 Greenberg

Judy<sup>T</sup> and Bill Greffin  
 Kelly<sup>T</sup> and John Grier  
 John R. Halligan Charitable Fund  
 Colette Johnston Hedien and  
 Wayne E. Hedien<sup>T</sup>  
 Robert A. Kubicka, MD  
 William C. Kunkler III<sup>T</sup> and  
 Susan Crown  
 Mr.<sup>T</sup> and Mrs. Randolph Kurtz  
 Caron and Alan Lacy  
 Leo Burnett Worldwide  
 McDonald's Corporation  
 The Morton Arboretum  
 Clare Muñana<sup>T</sup>  
 National Material L.P.  
 National Oceanic and  
 Atmospheric Administration  
 Mr.<sup>T</sup> and Mrs. Neil S. Novich  
 Mr.<sup>T</sup> and Mrs. Michael O'Grady  
 Mr. and Mrs. William A. Osborn  
 Peoples Gas  
 Pepsi Beverages Company  
 Michael and Tanya Polsky  
 The Regenstein Foundation  
 Cecelia and Thomas<sup>T</sup> Ricketts  
 Mr. and Mrs. Phillip B. Rooney  
 Joan and Paul Rubschlager  
 Mr. and Mrs. Patrick G. Ryan  
 Mr. and Mrs. Richard H.  
 Schnadig  
 Mrs. William L. Searle  
 Michael E. Severino, MD<sup>T</sup>  
 David J. and Dawn L.<sup>T</sup> Solomon  
 Walgreens  
 A. Montgomery Ward  
 Foundation  
 Melvin D. Williams<sup>T</sup>  
 Jason Wortendyke<sup>T</sup> and  
 Ariel Knowles

#### **\$10,000 to \$24,999**

Anonymous (8)  
 Adams Street Partners LLC  
 Allstate Insurance Company  
 American International  
 Group, Inc.  
 Aramark  
 Mr. and Mrs. Jeffrey S. Aronin  
 Baxter International Inc.  
 Bears Care  
 Larry J. Bell

Susan M. Benton<sup>T</sup>  
 Carol L. Bernick  
 Amy E. Best<sup>T</sup>  
 Bloomberg  
 Mr. and Mrs. Nathan A. Brown  
 The Buchanan Family  
 Foundation  
 Michael and Caroline Burns  
 Carol and Tom Butler  
 Rebecca Childers Caleel  
 Dianne and Thomas Campbell  
 Henry T. Chandler<sup>D</sup>  
 Chicago Public Schools  
 Chicago Title & Trust Company  
 Foundation  
 CIBC  
 Comcast Corporation  
 The Comer Foundation Fund  
 ComPsych Corporation  
 ConAgra Brands  
 Cecilia and Froilan Concepcion  
 Mr. and Mrs. James J. Conrad  
 A. G. Cox Charity Trust  
 Mr.<sup>T</sup> and Mrs. Kermit R. Crawford  
 The Crown Family  
 Daphne and John Cunningham  
 The Davee Foundation  
 Mr. and Mrs. James M. Denny  
 Janet W. Diederichs  
 Richard A. Ditton  
 Shawn M. Donnelley and  
 Christopher M. Kelly  
 Dover Corporation  
 Mr.<sup>T</sup> and Mrs. Jeffrey T. Foland  
 Peggy V. Fossett<sup>D</sup> / Peggy and  
 Steve Fossett Foundation  
 The Robert E. Gallagher  
 Charitable Trust  
 Mr. and Mrs. Camillo Ghiron  
 Mr. and Mrs. Richard C. Godfrey  
 W.W. Grainger, Inc.  
 Mr.<sup>T</sup> and Mrs. Lewis S. Gruber  
 Tonja Rizai Hall  
 Mary P. Hines  
 Hoellen Family Foundation  
 Mr. and Mrs. Geoff Hoffmann  
 Dr. and Mrs. Wayne J. Holman III  
 Susan D. Hoyne<sup>D</sup>  
 Maria R. Hrycelak, MD  
 J. Thomas Hurvis

Integrated Electric  
 Reinhardt H. and  
 Shirley R. Jahn Foundation  
 Jocarno Fund  
 Mrs. Noel Kaplan  
 Dennis and Kathleen Klaeser  
 The Knowles Foundation  
 Laurie and Rich Kracum  
 Jan and Richard W.<sup>TE</sup> Lariviere  
 Lavin Family Foundation  
 Legacy Foundation  
 Gail J. and Robert B.<sup>T</sup> Loveman  
 Mr. and Mrs. Keith Kizziah /  
 Malott Family Foundation  
 Mr.<sup>T</sup> and Mrs. Scott P. Marks, Jr.  
 Mr.<sup>T</sup> and Mrs. John W.  
 McCarter, Jr.  
 Kennon P. McKee, PsyD  
 Mr. and Mrs. Andrew J.  
 McKenna, Sr.  
 Mr.<sup>T</sup> and Mrs. W. James  
 Mc Nerney, Jr.  
 Florence J. Mikowski<sup>D</sup>  
 Molex Incorporated  
 Moller Family Foundation  
 Prince Albert II of Monaco  
 Foundation USA  
 Morgan Stanley  
 Mr.<sup>T</sup> and Mrs. Leo F. Mullin  
 National Endowment  
 for the Humanities  
 Mr.<sup>T</sup> and Mrs. Chris O'Herlihy  
 Mr.<sup>T</sup> and Mrs. James J.  
 O'Connor, Sr.  
 China I. Oughton  
 Jo Ann and Joseph Paszczyk  
 Helen J. Petersen<sup>D</sup>  
 Renaissance Charitable  
 Foundation Inc.  
 Mr. and Mrs. J. Christopher  
 Reyes  
 Mr. and Mrs. Larry D. Richman  
 S&C Electric Company  
 S&P Global  
 Sailor Jerry Spiced Rum  
 Mr. and Mrs. Gordon I. Segal /  
 Segal Family Foundation  
 Mr. and Mrs. Romolo Sidoli  
 Mr.<sup>T</sup> and Mrs. Alejandro P. Silva  
 Siragusa Family Foundation  
 Mr. and Mrs. Charles H.  
 Solberg, Jr.





## Field of Champions

On the evening of September 7, Museum Staff, Founders' Council members, Trustees, and guests attended Field of Champions, an event hosted by Field Trustee and Chicago Cubs Chairman Tom Ricketts at Wrigley Field. Showcasing the work of Museum scientists and baseball experts, booths were set up on the field and in the Cubs clubhouse. Guests could even go up to the press box, see the new clubhouse, and sit in the Cubs' dugout. Before the evening began, the Field's President and CEO Richard Lariviere, PhD, Tom Ricketts, and his Founders' Council Co-Chair Trustee Liz Sharp all spoke to the guests about the Museum and the importance of the Founders' Council. More than 750 guests attended this unique and spirited event.

Barbara A. Speer  
June M. Staackmann  
Mr. and Mrs. Neele E. Stearns, Jr.  
Judith B. Sugarman  
Tave Risk Management  
Mr. and Mrs. Thomas Tisbo  
Mr.<sup>†</sup> and Mrs. David M. Tolmie  
Mr. and Mrs. Bruce W. White  
William Blair & Company  
Winston & Strawn LLP

### \$5,000 to \$9,999

Anonymous (7)  
36 Foundation, Inc.  
Mrs. T. Stanton Armour<sup>†</sup>  
E. M. Bakwin  
Ricardo M. Basch<sup>‡</sup>  
Mr. and Mrs. Frank L. Bauer  
Verna L. Baughman, MD  
Mr. and Mrs. David W. Bernauer  
BlueCross BlueShield of Illinois  
The Robert Thomas Bobins Foundation  
Mr. and Mrs. Andrew W. Brown  
Linda and Vincent Buonnano  
Mr. and Mrs. Theodore R. Butz / The Butz Foundation  
Campbell Family Foundation  
Callie Anne and W.<sup>†</sup>H.<sup>†</sup>T. Clark  
Mary and Jim Costello  
Mark Crane  
Dr. and Mrs. Tapas K. Das Gupta  
Mr.<sup>†</sup> and Mrs. Oscar A. David

Mr. and Mrs. Mark D. Dawson  
Cheryl and Michael Del Campo  
Mr. and Mrs. Robert O. Delaney, Jr.  
The DeThorne Family<sup>‡</sup>  
DHR International  
Mr. and Mrs. Byram E. Dicks  
Thomas R. Doler  
Monica Donath  
John A. Edwardson  
Environmental Defense Fund  
Evans Food Group Ltd.  
Mr. and Mrs. William F. Farley  
Hattie A. and Marie V. Fatz Foundation  
Mr. and Mrs. Alexander H. Faurot  
Mr. and Mrs. Robert Feitler  
Fellowes Brands  
Harve A. Ferrill  
Mr. and Mrs. Peter D. Fischer  
Sonia A. Florian  
Ginny and Peter Foreman  
Mr. and Mrs. Philip M. Friedmann  
Mr. and Mrs. James P. Gorter  
Grant Thornton LLP  
Richard<sup>‡</sup> and Mary L. Gray  
Mr. and Mrs. John K. Greene  
Mr. and Mrs. William J. Hagenah  
Wolff Income Charitable Fund  
Hanley Foundation  
Eldred-Harland Charitable

Fund at The Chicago Community Foundation  
Harris Family Foundation  
Mr. and Mrs. Matthew C. Harris  
Beverly and Warren Hayford  
Lorraine M. Hurt and George M. Ingram  
I & G Charitable Foundation  
Indo-American Heritage Museum  
Ingredion Incorporated  
The Joyce Foundation  
Charles L. Katzenmeyer<sup>‡</sup>  
Anna Marie and Jerry Kelly  
Mr. and Mrs. T. Eric Kilcollin  
Liz and Eric Lefkofsky  
Mr. and Mrs. Clark Lewey  
Mr. and Mrs. John D. Mabie  
Manaaki Foundation  
Mr. and Mrs. John McLean  
Metropolitan Water Reclamation District of Greater Chicago  
Joan and Charles Moore  
Sandra L. Mueller  
Mr. and Mrs. Thomas M. Mulcahy  
Mary Jane Nordlund  
Mr.<sup>†</sup> and Mrs. James J. O'Connor, Jr.  
Stephanie Ortel  
Mr. and Mrs. Charles W. Palmer  
Terry and Lanny Passaro

Mr. and Mrs. Maurice Patrick  
Mr. and Mrs. Donald W. Patterson  
Mr. and Mrs. Norman Perman  
Mr. and Mrs. Mane Pritza  
Claire F. Prussian  
Mr. and Mrs. Robert Raimondi  
Helen S. Reed  
Mr. and Mrs. Andrew M. Rosenfield  
D. Roskin  
Mr. and Mrs. John W. Rutledge  
Mr. and Mrs. Robert J. Sanborn  
Karla Scherer  
Carol H. Schneider  
Charles & M.R. Shapiro Foundation, Inc.  
Roger D. Shaw, Jr.  
Sirius Fund  
Richard M. Skolly and Kate A. Feinstein  
The Smart Family Foundation  
Harold B. Smith  
Toni Sandor Smith  
Wendy Strauss  
Sulzer Family Foundation  
Carol C. Swift  
Mr. and Mrs. John W. Taylor III  
Mr. and Mrs. Ed Thayer  
Jane B.<sup>‡</sup> and Chester D.<sup>‡</sup> Tripp  
Mrs. Herbert A. Vance

Mr. and Mrs. Robert J. Wagner  
 Mr. and Mrs. John R. Walter  
 Everett S. Ward<sup>†</sup> and Iris K. Sims  
 The Warwick Foundation  
 Stacey Weltmer  
 Barbara H. West  
 William J. White<sup>†</sup>  
 Lawrence G. Wilcox<sup>D</sup>  
 The Abra Wilkin Fund  
 Wolff Income Charitable Fund  
 Mr. and Mrs. Kenneth J. Yager

#### \$2,500 to \$4,999

Anonymous (7)  
 Charles Adams Nature  
 Research Foundation  
 Adtalem Global Education  
 Mr. and Mrs. Gary D. Ahlquist  
 Mr. and Mrs. Douglas W. Allvine  
 The Allyn Foundation  
 American Agricultural  
 Insurance Company  
 Birute J. Apke  
 Michael D. Arnold and  
 Monica Wallace  
 Lucinda M. and David Baier  
 Sue and Stephen Baird  
 Randolph and Lorraine Barba  
 Mr. and Mrs. Aaron A. Barlow  
 Kara and Thomas Barta  
 Mr. and Mrs. Philip S. Beck  
 Helene Beisecker and  
 Jean Anne White  
 Deborah A. Bekken<sup>E</sup> and  
 Richard G. Kron  
 Matthew Benoit and  
 Cathleen Dohrn  
 Mr. and Mrs. Stephen P. Bent

Mr. and Mrs. Harrington Bischof  
 Mr. and Mrs. Andrew K. Block  
 The Bloom-Kessler Family  
 R. Darrell Bock and  
 Renee Menegaz-Bock  
 Hyacinth and Le Monte G.<sup>E</sup>  
 Booker, Sr.  
 Mr. and Mrs. John J. Borland, Jr.  
 Helen V. Brach Foundation  
 Lori Breslauer<sup>E</sup>  
 Michelle and David Buck  
 Mr. and Mrs. James  
 Casselberry, Jr.  
 Joan and Tom Castino  
 Center for Carbon Removal  
 Mr. and Mrs. John S. Chapman  
 Annette and Thomas Cole  
 James W. Compton<sup>†</sup>  
 Mr. and Mrs. E. David Coolidge III  
 Mr. and Mrs. Patrick Corrigan  
 The Couch Family Foundation  
 Kevin Coughlin and  
 Sue Burzawa  
 William Cox  
 Mr. and Mrs. William A. Crane  
 Jim W. Croft and  
 Marilyn Martinson Croft  
 Mr. and Mrs. Robert J. Darnall  
 Rebecca E. Deaton  
 Owen Deutsch and  
 Rona Talcott  
 Mr. and Mrs. James W. DeYoung  
 Candice and Scott Dias  
 Daniel Diermeier<sup>†</sup> and  
 Ariela Lazar  
 Richard A. Domanik and  
 Janice Y. Domanik  
 The Donnelley Foundation<sup>†</sup>  
 Mr. and Mrs. John Draper

Glenda W. Duncan  
 Mignon Dupepe and  
 John Snyder  
 Thomas E. Durica and  
 Susan Jacob  
 Ecolab Inc.  
 Jon Ekdahl and Marcia Opp  
 Mr. and Mrs. Samuel H. Ellis  
 La and Philip Engel  
 Mrs. Jerome L. Ettelson  
 Mr. and Mrs. Rob Farr  
 Mr. and Mrs. W. James Farrell  
 Amy and Cameron Findlay  
 Mr. and Mrs. Kenneth P. Fischl  
 Donna and Peter Freeman  
 Mr. and Mrs. Joel M. Friedman  
 Christine D. Giannoni<sup>E</sup>  
 Donna J. Godel and  
 Roger E. Godel  
 Mark Gold  
 Mary L. Gorno  
 Donald Grasso  
 Delta A. Greene  
 Joyce and Timothy Greening  
 Stephanie and Greg Guyett  
 Sally A. Hagan  
 Irving Harris Foundation  
 Mr. and Mrs. Dean M. Harrison  
 Malcolm H. Hast  
 Mr. and Mrs. Thomas Z.  
 Hayward, Jr.

Mr. and Mrs. Duncan Healy  
 Mr. and Mrs. Ted Helwig  
 Mr. and Mrs. Patrick J. Herbert III  
 Kimberlee S. Herold  
 Robert Hevey, Jr. and  
 Constance M. Filling  
 Mr. and Mrs. John L. Hines  
 Peggy L. Hoberg  
 Mr. and Mrs. Thomas H. Hodges  
 Heidi and Richard Holm  
 Mr. and Mrs. Arthur Holzheimer  
 Ying Hsu and Donald R. Monson  
 Laurie Huget and Werner Huget  
 Jill Hutchison and David Rosholt  
 Mrs. Robert C. Hyndman  
 Irish Woods Foundation  
 Jeani and Rich Jernstedt  
 Mr. and Mrs. James M. Johnson  
 Pamela MacVicar Johnson  
 Lynn and George Jones  
 Linda M. Jung  
 Kathleen and Alex Kallend  
 Mr. and Mrs. Eric Kauffman  
 Anne Kavanagh and Terry Smith  
 Mr. and Mrs. Eric Kennedy  
 The King Family Foundation  
 Mr. and Mrs. William J. Kirby  
 Becky and Lester Knight  
 Mr. and Mrs. Glenn A. Kolososki  
 Mr. and Mrs. Jim Korompilas

### 66th Annual Members' Nights

On May 18 and 19, the Field Museum hosted its 66th Annual Members' Nights. Enjoying special viewing opportunities, Museum members were able to see oversized artifacts from *Ancient Mediterranean: Cultures in Contact* as an extension of the exhibition. Among many other demos and events, members also learned about storing dinosaur bones and mammal specimens. On the Main Level of the Museum, guests met Kanza artist Chris Pappan and Lakota artist Rhonda Holy Bear for an exploration in contemporary Native American art. Nearly 7,000 members and guests attended this always popular tradition.





Patricia Kosmerl	Virginia A. O'Neill	Dolores Silverman	<b>\$1,000 to \$2,499</b>
Mr. and Mrs. Lawrence J. Crema	The Richard Laurence Parish Foundation	Elizabeth L. Snyder	Anonymous (8)
Mr. and Mrs. Michael Kuta	Dr. and Mrs. William R. Parkhurst	Amanda A. Sonneborn and Peter A. Malecki	Mr. and Mrs. John Aalbrektse
Mary Lawlor	Robin and Matthew Patinkin	The Sparacio Family	Joan and A. Robert Abboud
Wende L. Fox Lawson and Lawrence James Lawson	Mr. and Mrs. Robert P. Perkaus, Jr.	Heather T. Sparling and Jason Bakk	Dennis Abboud
Mr. and Mrs. Jordan Lowe	Mr. and Mrs. Andrew H. Shaw	Mr. and Mrs. Erik Steffensen	Eva Adler and Lorica Adler
Lubee Bat Conservancy	Denise Peterson	Thomas A. Stemwedel and Paula A. Borg	Anna and Kent Alcott
Ilene and Lawrence Lubell	Mr. and Mrs. Craig A. Pickenpaugh	Liz Stiffel	Alexander Ross Group
Mr. and Mrs. John Luscombe	Beverly and Stephen Pinaire	Doug Stiles	Brayton and Pim Alley
Douglas R. MacAyeal and Linda A. MacAyeal	Mr. and Mrs. Charles J. Pitman	Mr. <sup>†</sup> and Mrs. <sup>†</sup> Kevin Stineman	AMSTED Industries Foundation
Thomas T. Macejko, Jr. and Amanda Maw Macejko	Mr. and Mrs. Charles S. Potter, Jr.	Kevin L. Stoeckel and Emily Heisley Stoeckel	Darrell and Deb Anderson
Mr. and Mrs. John W. Madigan	Mr. and Mrs. Paul C. Poy	Mr. and Mrs. Ivan G. Strauss	Judith M. Anderson
Mr. and Mrs. Michael S. Magnuson	Irwin Press and Andra Press	Steven Strohmeier <sup>‡</sup> and Josie Brown	Rodney Austin
Mr. and Mrs. Timothy J. Malloy	Mr. and Mrs. John W. Puth	Mr. and Mrs. Harvey J. Struthers	Margaret B. and Harry Axelrod Charitable Trust Fund
Sandy and Jerry Manne	James A. Radtke and Susan A. Kressin	Arthur Susman and Carole Stone	James J. Barrett
Todd Marek and Vana Thayu	Mr. and Mrs. William Radzevich	Mr. and Mrs. Robert N. Szalay	Warren L. Batts
Marie A. Marotta	Mr. and Mrs. Miles Ridgway	Jenny and Flip Templeton	Mr. and Mrs. James N. Bay, Jr.
Jamie C. Marshall and Richard Sobkowiak	Mr. and Mrs. Bernard B. Rinella	Ceres Foundation	Elizabeth Anne Beal and Neil Stempel
Susan <sup>‡</sup> and John McBride	Roberts Family Foundation	Carol and Jim Tichy	Dr. and Mrs. Robert A. Beatty
Nancy A. McDaniel	Anita J. Rogers	Glenn and Jacqueline Tilton	Michael Beem
Mr. and Mrs. John E. McGovern III	Mr. and Mrs. Jeffrey S. Ross	Mr. and Mrs. James A. Tuchler	Rüdiger Bieler <sup>‡</sup> and Petra Sierwald <sup>‡</sup>
McKee Family Foundation	Mr. and Mrs. Norman J. Rubash	Anne Van Wart and Michael Keable	Katherine Birk
Agnes McKinney <sup>‡</sup>	Susan B. Rubnitz	Ryan VanHolsbeke <sup>‡</sup>	Molly and Trenton Curtis Blythe
Mr. and Mrs. Charles P. McQuaid	Ryan Ruskin <sup>‡</sup> and Michael Andrews	Mr. and Mrs. Thomas F. Veldman	Beth and Scott Brady
Erma S. Medgyesy	Rusty <sup>‡</sup> and Debbie Russell	Mr. and Mrs. Kenneth A. Viellieu	Richard T. Brannegan
Elisabeth C. Meeker	David W. Ruttenberg	Mr. and Mrs. David J. Vitale	Mr. and Mrs. Robert B. Breisblatt
Pamela G. Meyer	Sahara Enterprises, Inc.	Mr. and Mrs. Frederick G. Wacker III	Mrs. Cameron Brown
Pamela L. Miles	Linda E. Salisbury	Nancy L. Wald <sup>‡</sup>	William and Nancy Brown
Scott Mills	Yousuf and Dilara Sayeed	Mr. and Mrs. Douglas H. Walter	Ellen S. Buchen
Mr. and Mrs. Robert R. Moeller	Barbara M. Schleck and Gary M. Ropski	Dilnaz and Qaiser Waraich	Samuel and Beth Buchsbaum
Anthony G. Montag, MD and Katherine L. Griem, MD	Douglas M. Schmidt	Paul Waters and Nancy Bugajski	Mr. and Mrs. Willard Bunn III
Mr. and Mrs. Tom Murray	Karen and Frank Schneider	Carrie and Jay Weaver	The Achnacarry Foundation / Lenore and Douglas Cameron
Mr. and Mrs. Richard Naponelli	Barbara and Tom Schnitzer	Amy Welzer	Mrs. Robert Adams Carr <sup>‡</sup>
Natural Resources Defense Council	Mr. and Mrs. Sean Scott	Ryan B. Whitacre and Katherine T. Donaldson	Mrs. Silas S. Cathcart
Dr. and Mrs. Walter B. Newsom	Mr. and Mrs. Michael Sebastian	Crystina Williams and Amy Heaney	Chicago Botanic Garden
James H. Niehoff and Jolie R. Macier	Susan and Alan Sebulsky	Claudia L. Winkler	Mr. and Mrs. Peter W. Rogers
Mr. and Mrs. Craig Niemann	Monica and Stephen Sentoff	Nancy Hamill Winter	Josephine Chyatte
Christina J. Norton and John A. Biek	Robert M. Shafis <sup>‡</sup> and Carol A. Erickson	Mr. and Mrs. William E. Wolf	Nathaniel Purdy Clapp
Mr. <sup>‡</sup> and Mrs. John R. O'Connell	Sally Sharp	Mr. and Mrs. Tom Wotovich	Mr. and Mrs. Keith Clayton
Old Republic International Corporation	Pam and Tom Sheffield / JS Charitable Trust	Mr. and Mrs. Robert Zentner	Mr. and Mrs. John T. Coletta
	Q. Phia Sherry and Neal Sherry		Jenny Lynd Corley
	Shure Incorporated		Mr. and Mrs. George Covington
	Kass F. Sigal		Professor <sup>‡</sup> and Lady Peter R. Crane
			Charles F. Custer

William R. Darman and  
Maria Mau

Dr. and Mrs. Lloyd Davidson  
Rebecca Davidson

Mr. and Mrs. William L. Davis III  
Lidia B. Devonshire  
Draper and Kramer

Mr. and Mrs. Phillip L. Elbert  
Cherelynn A. Elliott  
Energy Foundation

The Donald Ephraim Family  
Foundation

Facilitated Solutions  
International

Mrs. Joseph N. Field<sup>D</sup>  
Judith Findorff and  
Kristen Marron

Edward T. Fishwick and  
Mary M. Case

Dorothy M. Flisk  
Susan Flynn

Food for Thought Catering  
Adrian R. Foster

Mrs. Zollie S. Frank Fund  
Deborah and Charles Frank  
Joanne Benazzi Friedland

Gary S. Friedlander and  
Wendy Sabbath

Mr. and Mrs. John E. Gepson  
Virginia and Gary Gerst  
Kamala and Kanwal Ghaey  
GKN Foundation

Mr. and Mrs. Christopher O.  
Glass

Nika Gloyeske  
Maureen Glynn

Katherine and Frederick Gnadt  
John D. Goerner

Julia Goff and Greg Goff  
Walter and Karla Goldschmidt  
Foundation

John C. Goodall, Jr.  
Ilene S. Gordon and  
Abram I. Bluestein

Mary W. Graham  
Anastasia Gutting  
Suzanne Gylfe

Mattie H. Harris  
Dorothy Harza  
Barbara J. Hebda  
Mr. and Mrs. James P. Hepp

Mr. and Mrs. Joseph  
Hernandez

Cynthia S. Heusing and  
David H. Kistenbroker

Mr. and Mrs. Robert M. Hickey  
Mr. and Mrs. C. Clarkson Hine  
Joan R. Hoatson

Charles<sup>D</sup> and Stephanie  
Hofbauer

Mr. and Mrs. Richard C.  
Hoffman, Jr.

Mr. and Mrs. Fred Holubow  
Janice Honigberg

Andrew and Cheri Houha  
Mr.<sup>D</sup> and Mrs. Peter H. Huizenga  
Susan and Tex Hall

Mr. and Mrs. Christopher Hurley  
Patricia J. Hurley  
IBM

Datin Tan Fui Lian and  
Datuk Dr. Robert F. Inger

Mr. and Mrs. Fruman Jacobson  
Mr. and Mrs. Andrew M. Jessen  
Beverly Joutras

Mr. and Mrs. Jordan L. Kaplan  
Mrs. Thomas A. Kelly

Shyam Khatau and  
Kavita Chandra

Heidi and Mitchell Kiesler  
Lynne King Roberts  
King Spruce Company  
Holly King

Mr. and Mrs. Tom Kingsbury  
Mr. and Mrs. John E. Kirkpatrick  
Mr. and Mrs. Frank L.  
Klapperich, Jr.

Mr. and Mrs. Norman A. Koglin  
Gail and Barry Kohl

Mr. and Mrs. Alfred F. Kugel  
William H. Kurtis<sup>T</sup> and  
Donna La Pietra

Mr. and Mrs. Michael P. Leahy  
Deirdre LeMire  
Mr. and Mrs. Alan Lerner

Laura Litten and  
John Andre Leduc

Sarah Lovaglio  
Scott Lowe and  
Mary Martin-Lowe

MAC Restoration  
Contracting, Inc.

R. Ernest Mahaffey and  
Sheila A. Penrose

Dean Mamalakis and  
Louise Mangos-Mamalakis

Michelle L. Maton and  
Michael C. Schaeffer

Heidi and Gregory Mayer  
Mr. and Mrs. James McClelland  
Bess-Catherine and  
James McCord

Mr. and Mrs. Ronald McKee  
Mr. and Mrs. John A. McKenna  
Bruce and Jane McLagan

Leslie Gantz McLamore  
and Scott McLamore

Mr. and Mrs. Andrew McNally IV  
Mrs. Hugo J. Melvoin

Mr. and Mrs. Michael Merfeld  
Mr. and Mrs. William P. Meskan  
Elizabeth Miller  
Cynthia A. Moody

Mr. and Mrs. Carl E. Moore, Jr.  
Mr. and Mrs. Gerald W. Moore  
Mary K. Moreland and  
Daniel T. Jenks

Anne M. Morgan<sup>E</sup>  
Harold M. and Adeline S.  
Morrison Family Foundation

Mr. and Mrs. Michael H. Moskow  
Helga E. Muench

Mrs. George V. Myers  
Mary Nalbandian  
Jossy and Ken Nebenzahl

Gary L. Neilson and  
Trudy A. Havens

Mr. and Mrs. Jonathan B.  
Newcomb

Mr. and Mrs. Ray E. Newton  
Mary C. Niehaus and  
Sanjeev Pandey

The Gerald Norton Foundation  
Mr. and Mrs. Chris Olson

Mr. and Mrs. Norman Olson  
Robert K. Parsons and  
Victoria J. Herget

Mr. and Mrs. Homi B. Patel  
Reverend Edgar Peara<sup>D</sup>  
Margaret M. Pendry

Aurie A. Pennick, Esq.<sup>T</sup>  
Bonnie S. Peters  
Jose Prado and Rosa Acevedo

Mr. and Mrs. Albert E. Pyott  
Mary F. Quednau

Mr. and Mrs. John R. Berry II  
Ginevra Stirling Ranney<sup>E</sup> and  
Ben Ranney

Nancy and Warren Rasmussen  
Mr. and Mrs. Stephen L. Ritchie  
Mr. and Mrs. Steven A. Rosen

Mr. and Mrs. Richard M.  
Rosenberg

Robert A. Rosholt and  
Sharon L. Brunelle

Renee and Edward Ross  
Foundation

H. Nelson Rowley III  
William Rudnick and  
Lisa Walker

Mr. and Mrs. Thomas D.  
Rutherford

Saganaga Corporation  
Sargent Family Foundation

Cynthia M. Scalzo and  
Henry Brown

Kelley C. Schueler  
Thelma L. Schwartz

Francine Scully-Lippitz and  
Herbert Lippitz

Edward Seaton  
David and Judith L. Sensibar  
Mihra Seta

Tracey Shafroth and  
Michael Elam

Mr. and Mrs. Jonathan Shaver  
Bette H. Sikes and  
Joan Pederson

Victoria M. Skala  
Skidmore, Owings & Merrill LLP

Mr. and Mrs. Reuben Slone  
Mr. and Mrs. Peter B. Smith  
Mr. and Mrs. Scott C. Smith

Mr. and Mrs. Benjamin Smith-  
Donald

Mr. and Mrs. Robert W. Smolen  
Mr. and Mrs. Walter S. Snodell III

Solot and Karp Family  
Foundation

Mr. and Mrs. Jeffrey Sommer  
Mr. and Mrs. Scott E. Sommer  
Tom Sourlis

Warren and Susan Spencer  
Mr. and Mrs. Stanley Stasch



Jocelyn Stoller	Attorneys at Law
Usha Subramanian <sup>‡</sup> and Deepak Raghunathan	Robert Z. Aliber
Mr. and Mrs. Bert O. Sullivan, Jr.	Roberta R. Allen
Mr. and Mrs. Brian R. Sullivan	Mr. and Mrs. Richard J. Almeida
Mr. and Mrs. James E. Taich	Alex Alvarado and Ashley McKinney
Mr. and Mrs. Gregory T. Taylor	Kristine Anderson
Mr. and Mrs. Richard L. Thomas	Paul and Mary Anderson
Mr. and Mrs. Maurice R. Thompson	Richard Assmus and Leah Welty
Tiny Tiger Foundation, Inc.	Andrea Atlass
Michael M. Todd, MD and Linda Todd	Tony Augustine
Lawrence and Margaret Tomaszek-Witry	Mr. and Mrs. William Bach
Mr. and Mrs. Raymond C. Tower	Richard P. Bail and Janice G. Bail
Mr. and Mrs. Andrew Trees	Mary Baniak and Mike Baniak
Howard J. Trienens	Katherine M. Barnash
Mr. and Mrs. Richard Uihlein	Carlo Basile and Kim Basile
Union of Concerned Scientists	Beans & Bagels
Mr. and Mrs. J. V. Van Cura, Jr.	Mr. and Mrs. Eric Beaumont
Shawn K. VanDerziel <sup>‡</sup> and Jay Clarke	Mr. and Mrs. Brian D. Beggerow
Dr. and Mrs. Jeffery S. Vender	Mr. and Mrs. Francis Beidler III
Katherine Vennetti	Mr. and Mrs. Donald A. Belgrad
Mariah Vichich	Mr. and Mrs. Ronald J. Benedict
Leslie and John Wainwright	Tom Benson
Ernest P. Waud III	Gerilynn and Hal Berding
Julie C. Webb and Laura Christman	Matthew Berding
Jane Frances Wells and Burton C. Ferrini	Mr. and Mrs. Robert Berman
Sheila and Brian Whalen	Sarah Bermingham
Mr. and Mrs. Raymon Whitney	Lieselotte N. Betterman
David E. Willard	Mark Bettin
James L. Wilson and Pamela Diane Toler	Mr. and Mrs. Richard B. Black
Melanie R. Wojtulewicz and Tony Crowe	Kristin and Jay Scott Bleecker
Joseph Wolnski and Jane Christino	Mr. and Mrs. Philip D. Block IV
Elizabeth Yntema and Mark Ferguson	Nancy L. Bodeen
Kenneth A. Youga	Mr. and Mrs. Paul A. Bodine
Mr. and Mrs. Phillip C. Zarcone	Laura and Robert E. Boyd, III, MD
Mark H. Zornow, MD	Barbara A. Boyer
	James A. Brainer
	Mr. and Mrs. William Brauneis
	Linda and Michael Bresolin
	Mr. and Mrs. Robert Brightfelt
	Steven U. Brint
	Mr. and Mrs. K. D. Brooksher
	Judy and John Bross
	Mr. and Mrs. Steven L. Brown
	Mr. and Mrs. Thomas Buck
	Eileen M. Cahill and Family
	Judith A. Caloud

#### **\$500 to \$999**

Anonymous (7)  
 Barbara and Steven Adelman  
 Mrs. John J. Ahearne  
 Alexander and Alexander

## **In Memory of Renee and Edward Ross**

Renee and Edward Ross were true Chicago philanthropists. Married for 73 years before Renee's death in 2015, the couple was involved in supporting many Chicago institutions, including the Field Museum. Edward was a legend for his business acumen and dedicated service to the community. Through the Renee and Edward Ross Foundation, the couple provided a significant gift to the Field Museum after Edward passed away on February 19, 2017.

Drew A. Carhart	Amy T. Dickinson and Jim Futransky
Mr. and Mrs. Walter R. Carlson	Dr. and Mrs. John R. Dimar II
Mr. and Mrs. Robert E. Carroll	Mr. and Mrs. James S. DiMatteo
Mr. and Mrs. Frantz R. Cartright	Mr. and Mrs. John M. Dixon
Mr. and Mrs. Phillip Cathlina	Mr. and Mrs. Thomas W. Doddridge
Sheila Cawley and Stephen Kahnert	Mr. and Mrs. Keith A. Dorman
Mr. and Mrs. Wilfred P. Chapeau III	Mr. and Mrs. James Downey
Natali Chavez	Mr. and Mrs. Donald Driscoll
Chicago Ornithological Society	Andrea M. Dudek
Stephanie Chueh	Helen M. Dunlap
Sharon L. Cline and Robert W. Tatro	Elise and Theodore Dysart
Mr. and Mrs. Joseph Cofield II	Mr. and Mrs. Timothy K. Earle
Ray Colebaugh and Catherine Rogers	Paul W. Earle and Ellen Rudnick
Mr. and Mrs. Terrence Collins	Mark C. Egan and Katherine Z. Egan
Mr. and Mrs. John C. Colman	Mr. and Mrs. Thomas C. Eley III
Christine Coode and Brent Pace	Mr. and Mrs. Paul M. Embree
Edward J. Cooper	Mr. and Mrs. Albert J. Falasz
Christine Courtnage	Mr. and Mrs. John F. Faulhaber
William D. Cox, Jr.	Carl B. Fausey
Susan Craft	Frank S. Femali
Mr. and Mrs. Bruce Crown	Mr. and Mrs. Jose L. Ferrer
The Honorable Barbara Flynn Currie	Mr. and Mrs. Stephen Fettinger
Mr. and Mrs. John A. Daniels	Robert Fisher
Mr. and Mrs. Allen R. Davies	Sally Fletcher
Laura Marcussen Davis	Lewis Flint
Patricia R. Davis	Mr. and Mrs. Francis G. Foster, Jr.
Dana and Stan Day	Mr. and Mrs. Sadgio Fredianelli
Diana L. DeBoy	Gerald Freedman and Elizabeth Sacks
Nancy Dehmlow and Cameron Dunne	Mr. and Mrs. William J. Friend
Louis <sup>‡</sup> and Margarette Delgado	Gregory J. Gajda
Abigail Diaz <sup>‡</sup>	Mr. and Mrs. J. Patrick Gallagher, Jr.

Jeanne K. Gang and  
Mark Schendel

Mrs. John S. Garvin

Melissa Genova Hill and Joel Hill

Mr. and Mrs. William A. Gifford, Jr.

Gretchen Gillis

Judy Girard

Chris Godell and Curt Ballard

Mr. and Mrs. William H. Gofen

Paula A. Golden

Joan Goldstein

Carolina Goncalves

Katherine Gory

Patricia A. Gowland

Dianna Grant-Burke, MD

Leila S. Green

Mr. and Mrs. Daniel R.  
Greenberg

Dr. and Mrs. Daniel Grossman

Cornelia Grumman and  
James Warren

Mr. and Mrs. John A. Hagenah

William M. Hales Foundation

Dr. and Mrs. George S.  
Hallenbeck

Mr. and Mrs. Joel L. Handelman

Dr. and Mrs. Donald Harden

Mr. and Mrs. David S. Harrington

Katherine P. Harris

Mr. and Mrs. David C. Hawley

Joanne Heal

Joyce E. Heidemann

Mr. and Mrs. David J. Height

Mr. and Mrs. Scott E.  
Hertenstein

Molly and Tim Heyen

Mr. and Mrs. Mark C. Hibbard

Mr. and Mrs. John W. Higgins

Melissa Hilton and  
Jonathan Perman

Larry A. Hoellwarth and  
Ann Shih-Hoellwarth

Mr. and Mrs. B. Peter Hofmann

Glenn Hopkins

Mr. and Mrs. Thomas Hopkins

Elizabeth A. Hopp-Peters and  
Kurt T. Peters

Mr. and Mrs. David B. Horn

Nancy A. Horner

Rose Houston Charitable  
Foundation

Mr. and Mrs. G. Cleveland  
Hunt, Jr.

Rex M. Hunt

Mr. and Mrs. Leslie Ireland

Steve M. Isaac and Judy Olds

Mr. and Mrs. Glynn Isoda

Mr. and Mrs. Jeffrey W. Jackson

Mr. and Mrs. Andrew M. Jarosz

Carole Wood and Carl Jenkins

Judy Johanson

Mr. and Mrs. Jerald L. Johnson II

Robert Bruce Johnson and  
Ann K. Eldred

Mr. and Mrs. Douglas L. Jones

Mr. and Mrs. Brian Jones

Eric and Cathy Jorgensen

Dr. and Mrs. Timothy Kamp

Kane County Chapter Illinois  
Audubon Society

Mayer and Morris Kaplan  
Family Foundation

Mary Kay Karzas and  
Warren K. Reiss

Mr. and Mrs. William O. Kasten

Jamie Kelly<sup>E</sup>

Katharine Kelly

Thomas and Margaret  
Kittle-Kamp

Mr. and Mrs. Adam Klauber

Anne V. Klecka

Mr. and Mrs. Robert D. Kolar

Mr. and Mrs. Rasit Konuk

Stanley L. Korwin and  
Nancy J. Hall

Natalie Kozlov

Mr. and Mrs. Lee V. Kremer

Paul R. Kressin and Kay Lee

Mr. and Mrs. James R. Krick

Mr. and Mrs. Michael J. Kuehl

Emerson and Martha Lacey

Ruth M. Larson

Winfred M. Leaf

Leslie A. Lee

Melissa K. Lee

Anita Lees and Lisa Lees

Glenn Lefkovitz

Mr. and Mrs. Sigmund Lefkovitz

Debbie Levitan

Jessica Levy

Charles Ashby Lewis

Dr. and Mrs. Michael S. Lewis

Mr. and Mrs. Donald J. Lewis

Mr. and Mrs. Robert E. Lindgren

Charles N. Lindsey and  
Zikri Yusof

Mr. and Mrs. Bert H. Lindstrom

Amy and Vincent Liptak

Elyse Litwack

Mr. and Mrs. Mark A. Livengood

William and Suzanne Logan

Marie Lona and Brad Coolidge

Michelle Lozins

Judith L. Macior

Mr. and Mrs. Bernard A. Mack, Jr.

Victor S. Magar and  
Deborah Oestreich

Ann Maine and Barrett Wood

Nina Mann

Charlene Marcus

Mr. and Mrs. A'ndrea Marcyniuk

Arthur and Elaine Margulis

Carmen Maso

Mr. and Mrs. Richard P. Mayer

Mr. and Mrs. Raymond McBride

Mr. and Mrs. Mark J. McCarville

James McCormack and  
Evelyn Zatkoff

Mr. and Mrs. Jeffrey R.  
McDonald

Liz and John McEnaney

Mr. and Mrs. Alan G. McNally

Joyce Meggett

Steven A. Melnyk

Mr. and Mrs. Robert C. Merrick

Mr. and Mrs. Glenn E. Merritt

Anne L. Metcalf

Ken Metcalfe

Carol and Jan Miecznikowski

Mr. and Mrs. Michael E.  
Mikolajczyk

Dr. and Mrs. Robert P. Miller

Miriam A. Mobley Smith and  
Colin Smith

Perry Mocerì

Mr. and Mrs. Thomas M.  
Monahan

Mr. and Mrs. Richard L. Moody

Thomas H. Moog

Mr. and Mrs. Rick Morimoto

Mr. and Mrs. John A. Morris

Maureen G. Mullally

Janet Murphy

Mr. and Mrs. Joseph Navarre

Suzu G. Neithercut

Mr. and Mrs. Neil C. Nelson

Gerald Newman

Marjorie and Christopher  
Newman

Mr. and Mrs. Gary R. Nickels

Lora Nickels<sup>E</sup> and  
Thomas Tague

Leslie and Richard North

Mr. and Mrs. Ismael Nuñez

Richard H. O'Connell

Mr. and Mrs. Donald R. Oder

Sarah R. Packard

### In Memory of Jan Miroslav Pencik

Born in Oak Park in 1938, Jan Pencik loved the Field Museum so much that, as a young child, his mother purchased a lifetime membership for him. Drawn to botany, particularly mushrooms, Jan frequented the Museum even after moving to Michigan as an adult. A stockbroker by profession, his love of nature caused him to include the Field Museum in his estate plans. Jan passed away on January 19, 2017, and the Field Museum received a bequest of over \$1 million. We honor the lifelong loyalty of our friend Jan Pencik.



Scott Pattullo and Jenny A. Johnson	Thomas and Ann Schultz	Mr. and Mrs. James Vallely	Anirudh Ajith
Mr. and Mrs. William B. Pearce	Dr. and Mrs. Peter F. Schultz	Mr. and Mrs. John F. Vicha	Judith A. Akers
Mr. and Mrs. Richard S. Pepper	Mr. and Mrs. Richard G. Schultz	Thomas W. Vogelsang and Kathleen M. Moran	Mr. and Mrs. Nathan Allen
Mr. and Mrs. David Perry	Mr. and Mrs. Stevan F. Schweighardt	Belle Waldfogel and Georgean Goldenberg	Mr. and Mrs. Thomas J. Allison
James W. Peters	Marilyn L. Schweitzer and Michael A. Firman	Marge Walls and Cassandra Sawyers	Tamara Samuels Almquist and Stephen Almquist
Katherine Philippe	Olivia J. Scully	Mr. and Mrs. Scot E. Warren	Marilynn Alsdorf
Mr. and Mrs. Thomas D. Philipsborn	Mr. and Mrs. Richard J. L. Senior / The Morgan Senior Foundation	Ann Wasoff	Michael Altman
Mr. and Mrs. Burt Pickard- Richardson	Mr. and Mrs. G. Curtiss Shaffer II	Mr. and Mrs. Ed Watkins	Maria Alvarez and Gloria Alvarez
Mr. and Mrs. Louis R. Pignotti, Sr.	Robert V. Sharp and Mary Ann Fischer	Sophia A. Watson	Susan and Roberto Alvarez
John Pinenti	Kate M. Sheehy	Carolyn M. White	Patricia Alvino and Nora Winsberg
Lisa Pinsley and Karim Kawakibi	Mr. and Mrs. Douglas L. Shuman	Bennie E. Whiten, Jr. and Susan E. Sporte	Mr. and Mrs. John R. Anderluh
Nancy Plax and Steven Schwartzman	Louis and Nellie Sieg Fund	Monica Wilkins	Bonnie J. Andersen
Lee B. Price	Ilene Simmons	Lynda Williams, PhD and Norman J. Williams	Mr. and Mrs. Arthur H. Anderson, Jr.
Mr. and Mrs. John B. Priest	Mr. and Mrs. Michael Simpson	April R. Wilson	Mr. and Mrs. Craig A. Anderson
Justin Priestman	Caroline and Jeffrey Skender	Mr. and Mrs. Gary Wilson	Mr. and Mrs. Edward Anderson
Michael Prussian and Carolyn Meyer	Maureen M. Slavin	Robert F. Wisniewski	Mr. and Mrs. Jonathan Anderson
Helene and Norman X. Raidl	Mr. and Mrs. Randy Smith	Carl Wolf and Jennie Sochon	Joshua Anderson
Dr. and Mrs. Mark A. Ratner	Larry and Maxine Snider	Mr. and Mrs. Terrence Woods	Mr. and Mrs. Greg P. Anderson
Timothy W. Raykovich and Donna Vega	Mr. and Mrs. John B. Snyder	Nancy G. Wulfers	Thomas Anderson
Merle Reskin	Keith Solomon and Elana Beckerman	Alon Yonaton	Kimberly Angland and Melissa Angland
Richard W. Richardson and Heather Archer	Michelle Sotak	Ray G. Young	Cheryl Aponte <sup>E</sup>
Mr. and Mrs. Donald E. Rocard	Lindsey Soukup	Owen and Linda Youngman	Ruth Archer and Jim Helke
Janice E. Rodgers	Donald Southworth and Marilyn Cantisano	Mr. and Mrs. Hugh Zentmyer	Mim Ari and James St. Clair
Jeanette Rodriguez <sup>E</sup>	Laura Speck and Kimberley Speck	Mr. and Mrs. Bruce Ziegler	Mr. and Mrs. Joshua Arlow
Marilyn Rohn	Leon and Cynthia Stecher	Mr. and Mrs. William B. Zigterman	Mr. and Mrs. Bruce T. Armstrong
Howard J. Romanek and Irwin Romanek	Mr. and Mrs. Richard Steinken	<b>\$250 to \$499</b>	Dorsey Armstrong and Paul Schneider
Mr. and Mrs. Harry B. Rosenberg	Mr. and Mrs. John A. Stepan	Anonymous (20)	Dee Jae Arnett and Riley Arnett
Michael and Madeline Rosenberg	James and Pamela Stola	Charlotte D. Abarbanell	Mr. and Mrs. Fernando Arriola
Rosenson Foundation	Lynn and Wayne Svoboda	Danielle Abboud and Michelle Abboud	Kaye B. Aurigemma
Mr. and Mrs. Robert J. Ross	Mr. and Mrs. Blake H. Swift	Mr. and Mrs. Brian Abrams	Mr. and Mrs. John S. Babowice
Mrs. Donald I. Roth <sup>D</sup>	Dr. and Mrs. Joseph W. Szokol	Gabriel Acinapura and Elizabeth Dyer	Mr. and Mrs. Troy Badali
Mrs. Stephen W. Rothermel	Mr. and Mrs. J. Hall Taylor	Roger S. Adamek	Lana Bailey
Donald Rowden	Mitch Theys	Anthony Adams and Kara Breems	Dr. and Mrs. Alfred L. Baker
Sheldon B. Rubin	Christine Tierney and Jeff Jordt	Cyrus H. Adams	Mr. and Mrs. Clyde N. Baker, Jr.
George and Kathleen Rummel	Beverly J. Timm	Gina Adduci	Sarah Baker
Norman L. Sandfield	Mr. and Mrs. Ben Tombaugh	Mr. and Mrs. David L. Ader	Mr. and Mrs. John T. Baldwin
Nancy A. Sans	Sally L. TreKell	Mr. and Mrs. William T. Adkerson	Alina and David Balko
Mr. and Mrs. John T. Schaff	Mr. and Mrs. John P. Tubutis	Susan S. Adler	Sarah and Adam Ballard
Dr. and Mrs. Morton O. Schapiro	Mr. and Mrs. Dominic P. Turchi	Julieta Aguilera and Andrew Johnson	Michael Barbalic and Maureen O'Donnell
Suzanne and Ken Schulte	Dr. and Mrs. Richard Tye		Frances Barrett
	Peter M. Vale		Susan Barrett and Jonathan Sweeney
	Mrs. Murray J. Vale		Susan Barriball and Charles Barriball

Jean McKee Barry	Jan Blok and Laura Melcher	Mrs. Clark Burrus	Diane D. Clarke
Robert and Susan Barsy	Mr. and Mrs. James P. Bloom	Mr. and Mrs. Michael Busch	Mr. and Mrs. Albert C. Claus
Mr. and Mrs. Sean Barus	Mr. and Mrs. Irwin A. Blumensadt, Jr.	Christine and David Buvinger	Benjamin A. Coats
Alben F. & Clara G. Bates Foundation	Georgia Bockos	Frances Cahill and Cynthia Cahill	Mr. and Mrs. Martin J. Cohen
Douglas D. Baum and Lynne M. Wait	Mr. and Mrs. Erwin F. Bogs	Steven M. Cain	Mr. and Mrs. Eric Cohen
Mr. and Mrs. Michael H. Bauschelt	Therese M. Bogs and W. Haser	Kimberly Caldwell	William S. Cohen
Mr. and Mrs. Kenneth J. Bazarnik	Mr. and Mrs. George Bohling	Edward Calkins	Mr. and Mrs. Stanley Cohn
William T. Beck and Doreine Carson	Mr. and Mrs. Matthew J. Boler	Eugene Callen	Mr. and Mrs. Michael P. Cole
Michael J. Becker	Mr. and Mrs. Thomas C. Boltik	Colin Campbell and Monica Lauren Hunt	Sharon P. Cole
Reverend and Mrs. William C. Beckmann	Alexandria Bond	Mr. and Mrs. Michael S. Canmann	Mr. and Mrs. Nicholas Coletta
John A. Becque, Jr. and Gail L. Sullivan	Mr. and Mrs. David Bonenfant	Mr. and Mrs. Gerrod Capps	Jonathan Colledge and Susan Duma
Mr. and Mrs. William Bedford	Richard and Jolanta Boniak	Roxanne Capron	James and Andrea Collingwood
Mr. and Mrs. Jeffrey Beech	Clarisa Bonilla	Mr. and Mrs. Thomas M. Carmazzi	Dr. and Mrs. Roosevelt D. Collins
Dirk Beekman and Rebecca Delahayne	Mr. and Mrs. Charles S. Boone	Mr. and Mrs. Joseph M. Carroll	Joan M. Colmar
Nancy Behrendt and Carl B. Pedigo	Mr. and Mrs. Jason Booth	Sarah and Steve Carter	Mr. and Mrs. Vito Colucci
Mr. and Mrs. Stephen E. Benefiel	Mr. and Mrs. Laurence O. Booth	Mr. and Mrs. Steven C. Carter	Pamela Conant
Benevity Community Impact Fund	Jennifer Bose	Daniel Castro and Jeannine Camic	Joan Conger and Julia Conger
George and Ellen Benson	Mrs. Edward S. Bottum	Elizabeth A. Cerny	Mr. and Mrs. Matthew Connelly
Mr. and Mrs. Robert A. Benziger	Mena and David Boulanger	Karen Chambers	Gladys E. Connolly
Dr. and Mrs. Michael Bercek	Dr. and Mrs. Aldridge K. Bousfield	Mr. and Mrs. David S. Chan	Michael Connolly
Mr. and Mrs. Matthew Berean	Dr. and Mrs. Bruce H. Boyer	Sitara Chandra and Anita Chandra	William Connor
Dr. and Mrs. Leonard Berlin	Mr. and Mrs. Dennis E. Bozych	Tammy and Brian Chapas	Lorraine M. Conroy
Martha Bermingham	Dr. and Mrs. David Bradley	Mr. and Mrs. Danny Chapman	Edmond Constantinescu
Mr. and Mrs. Robert Bernot	Maria Brandon and Randy Burrow	Mr. and Mrs. Walter Chase	Mark D. Contratto
Harriet K. Bernstein	Tim <sup>E</sup> and Julie Bratley	Mr. and Mrs. Paul S. Chatalas	Laura Cook and Gabriel Morton-Cook
Lawrence Bernstein	Marie E. Brelin	Sophia Chau	Mr. and Mrs. John W. Cooper
Lynn Besser	Mr. and Mrs. David Brewer	Susan and Tom Chemler	Mr. and Mrs. Gordon Coppoc
Mr. and Mrs. Robert Best	Charles T. Brockmann	Joan S. Cherry and John R. Cara	Wyatt Cornett and Mark Cornett
Mr. and Mrs. Adrian D. Beverly	Lynn Bromstedt	Anna Cheuvront	Gerald Corrigan
Mr. and Mrs. Sam Bianco	Rhen-Elyse and Matthew Brosseau	Thomas Chin and Cheryl Yuen	Mathew A. Cotton
William E. Bible	Mr. and Mrs. Daniel J. Brown	Gay-Young Cho and Yu-Lam Christopher Chiu, MD	Cynthia D. Cox and Robert Cox
Lois J. Bider	Mr. and Mrs. William Browne	Mr. and Mrs. James N. Chodora	Mr. and Mrs. Thomas W. Coyle
Henry and Leigh Bienen	Sharon Brown-Haynes	Mr. and Mrs. Paul Choi	Michael Cozza
Polly Bingham-Kawalek	Mr. and Mrs. Frank Bruno	Mr. and Mrs. John A. Chojnicki	Sue and Kyle Cragg
Michael Bishop and Vonora Bishop	Mr. and Mrs. Jackson Brunsting	Emily J. B. Christian	Dolores E. Cross, PhD
John Bistolfo	Mr. and Mrs. Wallace P. Bryant	Roger and Marion Christoph	Susan M. Crowell and Kathleen Cooke
Kay A. Bjork	Mr. and Mrs. Joshua T. Buchman	Marylinn Chrystal and Sarah Chrystal	Mr. and Mrs. Lester Crown
James Blanchet	Stephen J. and Susan P. Buck	Michelle Clairmont	Minerva Cruz
Mr. and Mrs. John Blaser	Ann M. Buckley	Mr. and Mrs. Dave E. Clark	Yvonne M. Curbis
	Thomas M. Buess	Marcus Clark and Lorrie Elliott	Dr. and Mrs. Arthur W. Curtis, MD
	Mr. and Mrs. Werner Buol	Mr. and Mrs. Randall Clark	John E. Cwenkala and Lorraine Brochu
	Mr. and Mrs. Daniel Burns	Dr. and Mrs. Robert D. Clark	Gail Dallas
	Timothy J. Burroughs and Barbara Smith	Mr. and Mrs. Steven L. Clark	Mr. and Mrs. James M. Daly II
	Mr. and Mrs. Robert Burrows		Mr. and Mrs. John M. Damas
			Mr. and Mrs. Alfred E. D'Ancona II



Jackie and Donald R. Dann	Mr. and Mrs. Joseph E. Doninger	Fertile Ltd.	Mr. and Mrs. William Georgis
Mr. and Mrs. Bruce Davidson	Susanna and W. Gregory Doolin	Mr. and Mrs. Robert H. Fesmire	Shelly Geppert and Rose Latuszek
Kent and Susanne Davis	Mr. and Mrs. Richard Doonan	Fred C. Fettingner	Mr. and Mrs. Isak V. Gerson
Matthew M. Davis and Lakshmi Halasyamani	George D. Driggers	Mr. and Mrs. Conrad T. Fialkowski	Mr. and Mrs. Douglas Geyer
Mr. and Mrs. Dennis De Bruler	Mr. and Mrs. Joseph H. Drummond	Mr. and Mrs. Sanford Finkel	Mr. and Mrs. George K. Gill
Pierre De Smul and Carol De Smul	Patricia J. Dryer	Mr. and Mrs. Duncan G. Fisher	Peter Ginn
Bruce Dean	Teresa Dube	Mr. and Mrs. John Fitterer	Mr. and Mrs. Carl Giometti
Mrs. Howard M. Dean, Jr.	Michael S. Dublak and Sharon M. Authier	Mr. and Mrs. James G. Fitzgerald	Paris Glazer
Mr. and Mrs. Mark D. Deaton	Mr. and Mrs. Robert Duffy	Jennifer Fitzgerald and Amy Fitzgerald	Mr. and Mrs. John Gleason
Mr. and Mrs. Rocco J. deGrasse	Diana L. Duncan <sup>E</sup>	Mr. and Mrs. Peter L. Flemister	Mr. and Mrs. Patrick Gleason
Carla M. Dehmlow	Mr. and Mrs. Stephen P. Durchslag	Geoffrey A. Flick	Paula Glitman and Doug Stone
Robin A. Delapena <sup>E</sup> and Dani Nichols	Anne O. Earle	Delia Flores	Richard Gnaedinger
Judith A. DeLeon	Glenna R. Eaves and Christopher J. Boebel	Christina and Philip Flores	Mr. and Mrs. David B. Golder
Mr. and Mrs. Charles Dennehy, Jr.	Martin Eckstein and Carol Bernstein-Eckstein	Ashley Floyd and Derrick Manuel	Rabbi Douglas H. Goldhamer and Peggy L. Bagley
George and Kathy Derkovitz	Diane S. Edlefson and Phil Harler	Martha and James Foght	Mr. and Mrs. Jerry Goldman
Doris Devine	The Robert G. Eiserman Family	Mr. and Mrs. William D. Folland	Mary Golf and Ann Golf
William Dewoskin and Wendy S. Gross	Dave Elderkin and Nicholas Day	David C. Follmer and Anita Samen	Mr. and Mrs. Edward Gong
Mr. and Mrs. Philip Diamond	J. Thomas Eller	Kimanne Foraker-Koons and Ronald Koons	Abimael Gonzalez and Uber Lopez
Mr. and Mrs. Giancarlo Dibonaventi	Mary Ellen and Tomy Endo	Liam T.A. Ford and Ann R. Weiler	Mr. and Mrs. Gene M. Gooding
Mr. and Mrs. Blair C. Dickinson	Mr. and Mrs. Wayne Eng	Evelyn Forstadt	Gary Gordon and Marilyn B. Hirsch
Leonora Dickson	Mr. and Mrs. Dan Engel	Elizabeth Foster	Mr. and Mrs. Andrew Gore
Lisa Diehlmann and William Deakin	George Engelin	Jason Franken and Tracy Barrett	Eve M. Gorman
Mr. and Mrs. William Dietz	Michelle and Carl England	Mr. and Mrs. William D. Franz	Mr. and Mrs. Numa R. Gottardi-Littell
Mr. and Mrs. William Differding	Gary Eppling	Mr. and Mrs. Earl J. Frederick	Robert Gourley
Patricia Ann Dihel and Glen Wilson	Patricia M. Erickson	Stephen and Barbara Fredman	Patricia and Daniel Govert
William and Mary Ann Dilla	Karen Ernst	Paul and Susan Freehling	Terry Grace and Judith Gaietto-Grace
Ellen J. Dillon	Mr. and Mrs. Ronald L. Eshleman	Mr. and Mrs. John F. Freund	Mr. and Mrs. Craig Graff
Mr. and Mrs. Terry Dillon	Jose Espiritu	Susan H. Friedman and Neil R. Friedman	Glenn Graham
William D. Dini	Sharon and Peter Exley	David Fry and Whitney Morris	Sharon Graham and Terry W. McGuire
Anthony DiSanto	Diana H. Fagan	Kim and Robert Fugiel	Karen L. Granda and John S. Mrowiec
Mr. and Mrs. Paul F. Dittmann	Mr. and Mrs. Thomas Fahrenbach	Mrs. Wm. T. Kirk, Jr.	Lance Grande, PhD <sup>E</sup>
Mr. and Mrs. John Dixon	Harry R. Fair III and Carolyn E. Jordan	Eleanore Funk	Ryan A. Grande and Demitria Dimopolous
Joshua Dlouhy	Mr. and Mrs. Frank Falbo	Mr. and Mrs. John Gage	Mindy Graser and Heather Lecher
Kevin Dockery and Kelly Reynolds	Mr. and Mrs. James Fanuzzi	Thomas F. Gajewski and Marisa Alegre	Mr. and Mrs. Elisha Gray III
Julie A. Dodds and William G. Humphrey	Tiffany Farriss	Mr. and Mrs. Roger Gansauer	James C. Green
Mr. and Mrs. David W. Dodson	Julie A. Federico and Alton Jay Mitchell	Angela Garavuso	John and Mary Greenwald
Mr. and Mrs. Philip B. Doherty	Dr. and Mrs. Balbino B. Fernandez	Martha A. Garcia	Mr. and Mrs. Mark J. Greenwood
Leonard and Patricia Dominguez	Mr. and Mrs. Matthew D. Anderson	Charles Gardner	Noel R. and Michael Grego
Lissa Domoracki		Jeff Gardner and Elizabeth Groothuis	Ann and Alan Grelyak
Mr. and Mrs. John Donato		Jamie Garzas and Cole Casas	Catherine A. Griffin
		Hildegard H. Geiger	Mr. and Mrs. Robert M. Grimm
		Lauren Geiss	
		Julie L. Gentes	

John F. Grobe	Farah Hatia and Yasir Sabri	Mel and Mary Jo Howard	Mr. and Mrs. Roderic Johnson
Ed Gross	Mr. and Mrs. Martin F. Hauselman	Mr. and Mrs. Toney Howell	Stacy L. Johnson
Caitlin and Edward Grossestreuer	Mr. and Mrs. Allan Hausfeld	Mr. and Mrs. Michael Hu	Timothy Johnson and Frieden Johnson
Ada Mary Gugenheim and Jon N. Will	Thomas Hawkins	Mr. and Mrs. David Hubbard	Mr. and Mrs. Ian Johnston
Anjali Gurnani	Mr. and Mrs. Franklin D. Hayes	Dr. and Mrs. Michael S. Huckman	Jaclyn M. Johnston <sup>E</sup>
Jennifer Guskey	Andrew Hazard and Laura Callahan-Hazard	Mr. and Mrs. Frederick J. Hug, Jr.	Lin Johnston
Dr. and Mrs. John W. Gustaitis, Jr.	Mr. and Mrs. David Hazels	Charles J. Hughes	Mr. and Mrs. Robert A. Jones, Jr.
Charlotte Guyett	Lawrence R. Heaney, PhD <sup>E</sup>	Jeri Sue Hughes and Sarah Hughes	Arthur P. Jordan and Diana Pappas Jordan
Mr. and Mrs. Dean L. Haas	Lawrence Heck	Pat Hughes and Brigid Hughes	Richard W. Josd
Robert A. Habermann	Bette Heide and Avis Lucas	Mr. and Mrs. Phillip D. Hulben	David R. Joseph
Mr. and Mrs. Mervin D. Hagen	James S. Heim	David L. Hulse	Mr. and Mrs. Paul R. Judy
Kati and John Hagenbuch	Mr. and Mrs. Jason Heinrich	Robin Humbert	Timothy Kaczocha and Kim Holmes
Dianne S. Haines and Julie Davis	Christine and Jim Helgert	Mr. and Mrs. David C. Humphrey	Judith Kadish <sup>D</sup>
Tara Hale	Clarence Helm and Stephanie Shaw	Diane S. Humphrey	Anna Kahrman
Eladia Halili	Frederick and Karen Henderson	Janice Humphrey	Jill M. Kainu and Michael LaBuda
Holley Hall	Mr. and Mrs. John Henderson	Mr. and Mrs. Jeffrey L. Hunt	Srinivas Kakumani and Seetal Kakumani
Cathleen and John Halliburton	Mr. and Mrs. Frank X. Henke III	Roger J. Hymen and Monika Cohen, MD	Kathleen G. Kallan
Mr. and Mrs. Joseph P. Hamilton	Karen J. Hennessy	Mr. and Mrs. Thomas Hysell	Sona Kalousdian and Ira D. Lawrence
Michael Hammerman	Susanne Henning and Robert Henning	Mr. and Mrs. Corey Iles	Mr. and Mrs. Fredrick Kamil
Mr. and Mrs. Thomas Hammerman	Mr. and Mrs. Paul M. Herkes	Cheryl Istvan and Keith Daubenspeck	Mr. and Mrs. Arnold Kanter
Mr. and Mrs. M. Hill Hammock	Mr. and Mrs. Jeffery S. Heydanek	Mr. and Mrs. Roland L. Jabotte	Lily Kanter
Mr. and Mrs. Michael S. Hammond	Andrew Heymann	Judith M. Jackson and Dannielle G. Jackson	Dr. and Mrs. George C. Karkazis
Paul Hamper	Mr. and Mrs. William Hicks	Julianne Jackson and Rob Pileckis	Jamie Karoff
Mr. and Mrs. John S. Hand	Daniel P. Hidding	Marilyn Jackson	Mr. and Mrs. John A. Karoly
Chester S. Handelman and Phyllis Handelman	Mr. and Mrs. Harlow N. Higinbotham	Mr. and Mrs. Todd G. Jackson	Joseph Kartheiser and Katie Blasius
Mr. and Mrs. Kenneth S. Handmaker	Mr. and Mrs. Andrew Hill	Mr. and Mrs. Robert A. Jahnke	Mr. and Mrs. Byron C. Karzas
Larry L. Hanes	Mr. and Mrs. Andrew Hill	Adam E. Jakus	Mr. and Mrs. John S. Kasang
Esther R. Hankin	Mrs. Edward M. Hines	Mr. and Mrs. Paul A. James	Verla Kasmerchak
Richard Hanks and Libia Gil	Mr. and Mrs. Joseph Hinkel	Mr. and Mrs. Timothy Janowick	Jodi Kim Kastner
Joseph R. Hanley and Kristy L. Mardis	Austin L. and Beth M. Hirsch	Janice A. Jarnholm	Michelle Kaysen
Robert Hanlon and Barbara MacDowall	Cynthia and Michael Hirsch	Catherine A. Jaselskis and Gary G. Alberts	Ginger and Kevin Kearney
Kim and Dan Hare	Mr. and Mrs. Richard M. Hirsch	Barbara B. Javaras	Mr. and Mrs. Michael G. Keck
Mr. and Mrs. Kevin Hargis	Donald W. Hitzeman	Rose Mary Jelinek	Mary Jane Keitel <sup>E</sup> and Mark J. Bouman, PhD <sup>E</sup>
Patricia A. Harper	Kathleen Hoban	Mr. and Mrs. Garrett Jenks	Lisa and Ryan Kell
Scott Harris and Howard Harris	Mr. and Mrs. James M. Hohner	Mr. and Mrs. William R. Jentes	Ellen and James Kelleher
Zena Leah Harris, MD and David Gius, MD	Edward and Jo Ann Holba	Mr. and Mrs. Jose L. Jimenez	William C. Kelly, Jr.
Alison Hasbargen	Craig J. Holderness	Carl W. Johnson and Laura M. Bloom-Johnson	Barbara Kenar-Schilling
Howard A. Hast and JoAnn Olsen	Nancy Holland	Christopher Johnson	Mr. and Mrs. Terrence Kennedy
Mr. and Mrs. Edward D. Hatcher	Mr. and Mrs. Dean T. Honda	Mr. and Mrs. W. Bruce Johnson	Hannah Keogh
	Honeywell International	Lloyd Johnson	Mr. and Mrs. Paul Kepes
	Mr. and Mrs. Joel D. Honigberg	Mr. and Mrs. Rich Johnson	Susan B. Kern and Alex Yamron
	Thomas A. Hootman and Pamela J. Sisler	Richard Johnson	Kate T. Kestnbaum
	Mr. and Mrs. Thomas J. Hope		
	Madeline C. Houser		



Robert and Patricia Kilinskis	Brian Lee Kruse and Alyson Koblas	Andrew Lewis and Nicole Kazee	Cynthia Mark-Hummel and John Hummel
Byoung Sug Kim and Eun Ko	Gregory Kuhn	Michael Lewis	Mr. and Mrs. John B. Markovic
Theodore Kim and Jessica Alessi	Mr. and Mrs. David Kulieke	Mr. and Mrs. Robert Libka	Mr. and Mrs. David Markovitz
Stephanie Kimmel <sup>E</sup> and Mike Conroy	Jennifer Kunkel and Brook Enhelder	Gilbert Lichstein and Ruth Czarnecki-Lichstein	Peter Marks and Dorothy Mackevich Marks
James and Diana King	Mr. and Mrs. Walter W. Kurczewski	Elizabeth Lidd Factor and Laiah Factor	Mr. and Mrs. Dan Marks
Jenny and John Kinsella	Nicole Kwiatek and Katie Kwiatek	Joseph Like	Judith Marth
Mr. and Mrs. James R. Kirk	Lynne La Jone and Chris Mollet	Mr. and Mrs. Edward Lin	Mark Martin
Mr. and Mrs. Harreld Kirkpatrick III	Mr. and Mrs. Mark R. Laatsch	Josephine and Daniel Lisowski	Todd and Erika Martin
Keith Kleehammer and Cheryl Sweeney	Dr. and Mrs. Richard J. Labotka	Marcia Liss and Jenna O'Del	Ana I. Martinez and Noel De Leon
Dr. and Mrs. Thornton C. Kline, Jr.	Paige LaCour	Paul Littlejohn and Sara George	Marco L. and Susan Martinez
Edward T. Klunk	Deborah M. Lader and Michael L. Silver	Mr. and Mrs. Chuanbo Liu	Mr. and Mrs. John Martini
Judith L. Knie	Felicia LaGioia	Mr. and Mrs. William F. Lloyd	Mr. and Mrs. John Massey
Jessica Knierim and R. J. Lindsay	Mr. and Mrs. Lester M. Lampert	Thomas E. Lofgren and Sarah Anne Lofgren	Dr. and Mrs. Walter E. Massey
Ricardo Knight and Wanda Grant	Michael Landau	Dr. and Mrs. Eugene B. Loftin	Mr. and Mrs. James R. Mather
Robert P. Knight	Mr. and Mrs. Dirk B. Landis	Michael Lonero and Joan Toland	Mr. and Mrs. Alan Matsumura
Timothy B. Knuth and Elizabeth Tate	Craig Landon	Robert Long and Ruth Knight-Long	Mr. and Mrs. Charles R. Matthews
Ray H. Kocher	Dana Langtiw	Sherry and Melvin Lopata	Mr. and Mrs. Wesley D. Matthews
Thomas Koelbl and Margaret M. Forbes	Albert F. Ettinger and Susan Lannin	Mr. and Mrs. Gregory Lopez	Julie L. Mattson and Richard A. Mattson
Mr. and Mrs. Melvin J. Koenigs	Christine J. Laperuto and William J. Roznowski	Barbara Mankus Louthan	David Mausner and Gale Zemel
Mr. and Mrs. Shohei Koide	Mr. and Mrs. Charles W. Larsen	Dr. Spomenka M. Luedi and Hans Luedi	Charles Mauter
Mr. and Mrs. John E. Koliopoulos	Mr. and Mrs. Eric Larson	Dr. and Mrs. Louis P. Lukancic	Juan Mayen and Nicole Prosecky
Mr. and Mrs. Steve Kolodziej	Michelle D. Layman	Pamela A. Lunsman and Kelly Englum	Mr. and Mrs. Henry H. Maze
Becky Koman	Mr. and Mrs. David C. Lazar	Jane and Steve Lupton	Dr. and Mrs. Lloyd A. McCarthy
Mr. and Mrs. Joseph A. Kosinski	Cathy G. Lazaroff	John R. Lurain and Nell S. Lurain	Mr. and Mrs. William W. McKeever, Jr.
Mr. and Mrs. Kelly Kost	Mr. and Mrs. Jay M. Leaman	Mr. and Mrs. Gregory Lynch	Mr. and Mrs. Scott McBride
Risha Kotecha	Adam R. Leber and Danielle Desjardins	Mr. and Mrs. Robert W. Lynch	Casey McCarthy
Mr. and Mrs. Mithilesh Kotwal	Aaron Lebovitz and Donna Myers	Allan Maca	Marilyn McClory
Mr. and Mrs. Glenn A. Kowalski	Emily and Stephen Lee	Mr. and Mrs. Laird Macdonald	Stuart A. McCrary and Nancy L. Davis
Mark F. Kozloff and Gale M. Kozloff	William M. Lee, Jr.	William and Lenore L. Macdonald	Kevin C. McDonald and Judy A. Chan
Regina Krakowski	Joshua Lemon	Mr. and Mrs. Craig A. Mackrides	Sherry L. McFall and Kenneth J. Porrello
Mr. and Mrs. Theodore J. Krakowski	Lisa and Anthony Leniski	Carol A. Macola and Nicholas Macola	Bob McGee and Elizabeth Ciccolini
Chris Kratz	Mr. and Mrs. Kurt A. Lentsch	Mr. and Mrs. Steve Magenta	Jim McGrath
Mari Beth and Michael Krause	Glenn Leonard and Mary Anne Daher Leonard	Richard D. Malone	Mr. and Mrs. G. Thomas McKane
Michael Kraynak	Mr. and Mrs. Vincenzo O. Leone	Diane and James Maloney	Mr. and Mrs. Lester H. McKeever, Jr.
Jennifer M. Krejci	Michael A. Leppen	Alexandra Margo Malos	John and Amy McKeough
Mr. and Mrs. Paul K. Krickl	Jack Lerman and Elise Pike Lerman	Mr. and Mrs. Martyn L. Mantynband	Mr. and Mrs. John S. Meany, Jr.
Mr. and Mrs. Jeffrey A. Kriezelman	Barry Lesht and Kay Schichtel	Mr. and Mrs. Ira Marcus	Terry J. Medhurst
Mr. and Mrs. Brian E. Krob	MSgt. and Mrs. Gary L. Lessenberry	Nicole Mardos and Danielle Yonker	
Mr. and Mrs. Larry S. Krucoff	Mr. and Mrs. John G. Levi	Dr. and Mrs. Lawrence N. Margolies	
Dona Krug	Mr. and Mrs. Kenneth C. Lewin		
Juliann Krupa			

Mr. and Mrs. John Medio	Mr. and Mrs. Edward C. Murawski	Dorothy Jeanne Oakley	Frederic C. Pearson
Tamiye Meehan	Marisa Murillo and Mathilda Murillo	Mr. and Mrs. Michael O'Brien	Mr. and Mrs. Antonio Pedraza, Jr.
Mr. and Mrs. John Meehl	Mr. and Mrs. James G. Murphy	Junell O'Donnell	Pete Pelletier
John M. Meeks	Mr. and Mrs. J. B. Murphy	Mr. and Mrs. Emmett O'Hara	Michael Peninger and Pamela Crandall
Mr. and Mrs. James R. Meindl	Mr. and Mrs. James Murray	John R. Oliphant	Mr. and Mrs. Frank Pensiero
Joan and Jeff Mercuri	Linda Rae Murray and Susan Avila	Marie E. Olsofka	Mr. and Mrs. Ray J. Pensinger
Alan Mesh and Bonnie Podoloski	William Murray and Susan Cahill	Brian Olson	PepsiCo, Inc.
Mr. and Mrs. Laurens J. Mets	Ruth J. Muyskens and Philip Postlewaite	Tod A. Olson and Julie Stauffer	Mr. and Mrs. Mathias Perdekamp
Beverly M. Meyer	Mr. and Mrs. James W. Myers	Neil and Katherine O'Mahony	Robert Peretti and Quaylin Peretti
Robert C. Michaelson	Dr. and Mrs. Charles F. Nadler	Mr. and Mrs. Rick Oppermann	Kay Perez and Corey Fratus
Laurel and Michael Mielke	Dr. and Mrs. Jonathon H. Nadler	Mike Oren	Abigail Perkins and Philip Perkins
Mr. and Mrs. Chad Miller	Mr. and Mrs. Jerry A. Nagles	Mr. and Mrs. Robert W. Orr	Mr. and Mrs. Mark Peters
Catherine Miller and Greg Gunderson	Mr. and Mrs. Ron B. Nahser	Mr. and Mrs. Baltimore F. Ortega	Mr. and Mrs. Michael F. Petersen
Catherine E. Miller	Christopher Narburgh	Mr. and Mrs. James O'Shea	Mr. and Mrs. Daniel B. Peterson
Mr. and Mrs. Daniel Miller	Cynthia and Nolan Narut	Mr. and Mrs. Alan Oshita	David Peterson
Jaclyn C. Miller	Mr. and Mrs. Mohammed Naser	Mr. and Mrs. Dennis V. Osimitz	Verne Peterson and Julie Lipkin
Robert J. Miller and Jill K. Goldberg	Kenneth Nassau	Laura Osmanski	Mr. and Mrs. Matthew Petterson
Thomas Miller	James Naughton and Anita Andren	Mr. and Mrs. James J. O'Sullivan, Jr.	Mr. and Mrs. Christopher F. Pfaff
Vernon A. Miller and Kathryn Tecza	Regina and Serjio Navejar	Christine Ott	Mr. and Mrs. Jeffrey Pfluger
James C. Mills and Lois S. Zoller	Mrs. Earl L. Neal	David Otto and Marianne Wojak	Elizabeth B. Phillips
Michael E. Moats and Kathy Moats	Mr. and Mrs. Robert J. Nelson	Mr. and Mrs. Shannon Owens	Judith R. Phillips
Mark Monaghan and John Monaghan	Mr. and Mrs. Joseph Nemec	Mr. and Mrs. Charles Paape	Susan I. Phillips <sup>E</sup>
Matthew B. and Sherry L. Monesmith	Lisa Nemeroff	Mr. and Mrs. M. J. Padorr	Nella Piccolin
Jose Dennis A. Monteverde	Robert E. Nerius and Mary McNaughton	Ronna J. Page	Mr. and Mrs. James E. Piechowski
Mr. and Mrs. Eugene F. Moore	Jack Netter	Mr. and Mrs. Raymond Paice	Mr. and Mrs. Edmund Piehler
Mr. and Mrs. David Moore	Anne Newbold	Bruce Palmer and Fabienne Palmer	Mr. and Mrs. Robert G. Pierce
Jim and Diane Moore	Mady Newfield and Rob Plunkett	Mr. and Mrs. Thomas Palmer	Mr. and Mrs. Robert L. Pierce
Mr. and Mrs. Kenneth D. Moore	Katherine Newhouse	Donald Panovich and Celia Panovich	Mr. and Mrs. Michael R. Pinsky
Mr. and Mrs. Leon W. Moore	Robert C. Newman	Eric Nielsen and Ellen Papacek	Mr. and Mrs. Joseph Pisoni
Brittany Morgan	Karen Nickelson	Mr. and Mrs. Michael S. Parenoff	Mr. and Mrs. Walter J. Plank
Diana and Graeme Morgan	Gail Niemann and Douglas Farr	Elissa Park and John Quigley	Mr. and Mrs. Charles J. Plasil
Mr. and Mrs. David D. Morimoto	Jill Niland	Eleanor Parker	Joseph and Mary Plauche
George G. Morrison	Anya Niroalai and Nicholas Yogerst	Elaine and Frank Parker	Mr. and Mrs. Andrew Plautz
Sabrina R. Morton	Alice Niziolek and Kathy Curran	Robert and Catherine Parks	Mr. and Mrs. Charles F. Pleier
Vijai K. Moses and Raj Lartius	Raymond L. Noftsgger and Tina Forchetti	Wayne T. Parman and Jana O'Brien	Peter W. Plumley and Anna M. Rappaport
Barbara Mudloff	Erin and Patrick Nolan	Stanley Parzen and Lynne Raimondo	Joshua and Jennifer Poje
Mr. and Mrs. Kurt M. Mueller	Mr. and Mrs. Philip Nolan	Kimberly and Richard Patrick	Mr. and Mrs. Jay Pollitt
Clara Mueller	Linda Nolten	Jim and Chris Patterson	Mr. and Mrs. Oren T. Pollock
Mr. and Mrs. Stephen Mueller	June A. Novalich and Helene Novalich	Lois M. Pausch	Sylvia Klajs-Ponnezhan and Vijai Ponnezhan
Mr. and Mrs. David Mui		Monica Pawelec and Eva O'Brien	Mr. and Mrs. Avner Porat
John Mulford		David J. Peace and Karen Ferrer	William P. G. Potocek
Mr. and Mrs. Michael Mullane		Richard and Celeste Peake	Charles A. Pounian, PhD
Hector and Zina Munoz		Mr. and Mrs. Jerry K. Pearlman	



Manushag Powell and Derek Pacheco	Dennis and Elizabeth Riordan	Peter F. Saunders and Patricia J. Larson	Vivian Sheffield
Mr. and Mrs. John W. Prange	Maureen L. Riordan	Fred Savaglio and Ann E. Meininger-Savaglio	Mr. and Mrs. Matthew Sheldon
Mr. and Mrs. Michael Prapuolenis	Abigail L. Ristow <sup>£</sup>	Meredith and David Schacht	Marjorie Shelley and Thomas Omer
Mr. and Mrs. Michael Prentice	Kristen Rivers and Leanne Rivers	Alice D. Schaff	Mr. and Mrs. Charles Shenk
Terese Preston	Chauncey H. Robinson	Mr. and Mrs. Terry G. Schechner, DDS	Timothy C. Sherck
Dr. and Mrs. Richard A. Prinz	Mr. and Mrs. David E. Robinson	Mr. and Mrs. David M. Schiffman	Mr. and Mrs. Brian Sherman
Ciara Proctor	Mr. and Mrs. Timothy M. Rockhill	David L. Schlotterback	James V. Shipp and Nancy Marie Casper
Mr. and Mrs. Shelby Pruett	Mr. and Mrs. Ismael Rodriguez	Susan D. Schlough and Andrew D. Abbott, PhD	Michelle Shlimon
Doris J. Puntney	Yvette Rodriguez	Robert Schmadeke	Dasha Shor
Mr. and Mrs. John F. Pustola	Elissa Rodriguez-Hadac and Jocelyn Rodriguez	Alin Schmidt	Mr. and Mrs. William Shorey
Mr. and Mrs. Jeff Quast	Ron G. Rohde	Beth <sup>†</sup> and Marc Schmidt	Mr. and Mrs. Duward F. Shriver
Mary Quigg	Julie Ann Roin and Saul Levmore	Tina Schmidt	Ruby Siddiqui
Mr. and Mrs. Robert K. Quinn	Edgar Rojas	Mr. and Mrs. Stephen Schmitt	Daniel Siegel
Shanna Quinn	Mr. and Mrs. Robert Rolih	Mr. and Mrs. Eric R. Schnadig	Mr. and Mrs. Dillan Siegler
The Quint Family	Mr. and Mrs. Benjamin Rooks	Michael J. Schneider	Mr. and Mrs. Alan H. Silberman
Nyrmin Quintero and Angel Altieri	Patricia Rooney	Dr. and Mrs. G. Stephen Scholly	Natalie and Michael Silerzo
John and Camellia Radzinski	Mr. and Mrs. Theodore Rosean	Richard Schreiner	Mr. and Mrs. David Silke
Katherine Raff	Mr. and Mrs. Morton Rosen	Alan Schriesheim, PhD	Mr. and Mrs. Alejandro Silva, Jr.
Israel Ramirez and Karla Rachwalski	Dr. and Mrs. Neil Rosenberg	Mr. and Mrs. Paul W. Schroeder	Mr. and Mrs. Salvador Silva
Dorothy Victoria Ramm	Mr. and Mrs. Bernhard Rosenstein	David L. Schultz	Mr. and Mrs. Daniel H. Silverstein
Ruth G. Ramsey, MD and Michael M. Ramsey, MD	Mr. and Mrs. Dan Rosenthal	Mr. and Mrs. Karl Schultz	Todd Simec
Mr. and Mrs. Craig Randall	Warner A. Rosenthal	Susan and Charles P. Schwartz	Cecelia Simmons and Leontine Clark
Catherine A. Randolph	Brian Roska and Ellen Roska	Robert F. Schwartz	Junie L. Sinson
Victoria Post Ranney and George A. Ranney, Jr.	Vivian L. Ross and Sandy Silver	Ronald and Jane Schwuchow	Carol B. Skala
Dr. and Mrs. James Read	Mr. and Mrs. Ken Rotter	Eileen V. Schwuchow- Wehrheim and Thomas Wehrheim	Margaret Skrmetti and Jerel Bangayan
Jenna Reed	Phillip D. Rowe	Ryan Scofield and Krista McKim	Daniel Slattery and Ellen Mrazek
Mr. and Mrs. Mark E. Reeves	Debran Rowland and Luke Hanley	Shauna Scott and Kerry Hall	Mr. and Mrs. Thomas L. Slattery
Mrs. Clyde W. Reighard	Kathryn J. Rubel	Emily Searcy and Rebecca Lingo	Mr. and Mrs. Mitchell L. Slotnick
William J. Reinke	Lynn M. Rubino	David Segal	Arden and Charles Small, Jr.
Mark S. Reiter and Kathleen A. Ward	Roberta F. Rudnick	Rhys Seiffe	Mr. and Mrs. Edward Byron Smith, Jr.
Colleen and Charles Remsberg	Catherine Rudolph	Mr. and Mrs. T. Dwaine Sell	Janna and Fred Smith
Sigrida Renigers and Astra M. Patrick	Mr. <sup>†</sup> and Mrs. Jesse H. Ruiz, Esq.	Mr. and Mrs. James Senjanin	Mr. and Mrs. Stephen Smith
Garth Renne	Jacqueline Sadler	Mr. and Mrs. James Setzer	Therese G. Smith
Marquee Reno and Jay Neander	Frank and Joan Safford	Kal Shah and Deepti Singh	Ian Smithdahl and Stephanie Wagner
Nanci Repala and Violet Goodheart	Christina M. Sakowski	Mr. and Mrs. Connor B. Shaw III	Geraldine Smrcina
Mr. and Mrs. John D. Reppy	Patrick J. Salem and Mary T. Cherian	Damian Shaw	Peggy Snorf
Raiselle C. Resnick and Kenneth I. Resnick	Dr. and Mrs. Edwin C. Salter	Mr. and Mrs. John A. Shaw	Cheryl and Shane Solheim
Mr. and Mrs. Michael Richards	Paul and Bettylu Saltzman	Paul Sheehan and Andrea Ernest	Mr. and Mrs. Matthew Sons
Mr. and Mrs. Jerald F. Richman	Christine A. Salvator	Mr. and Mrs. Neil J. Sheehan	Kelly Soprych and Karen Soprych
Patricia A. Riley	Jack Santarsiero		Mr. and Mrs. Roberto Soriaga
	Coletta Sargant		Robyn Sotak
	Mr. and Mrs. Milan Saric		David Spadafora

Christopher Spanel	Kenneth Swiatkowski and Valerie Schoen	Mr. and Mrs. William Trost	Don Waller and Caitlyn Allan
Norman F. Spielman	J. Roger Swihart	Mary Trowbridge and William West	Ronald J. Wallin and Whitney A. Parker
Mr. and Mrs. Donald E. Sporleder	Judith Szach	Marla J. Tucker	Jessie and Brian Walsh
Mr. and Mrs. Eric Spratford	Dr. and Mrs. Jan P. Szidon	Kerry Tulson and Kevin LaVoy	Marquis Wang
Mr. and Mrs. Randy Springer	Brian Tang	Mary Beth and Joseph Turek	Ralph L. Wanger, Jr. and Monique Clarine
Sarah D. Sprowl	Gayle Taylor	Scott F. Turow and Adriane Glazier Turow	Kathleen Ward and Patrick Kelly
Gloria Stachnik	Steven F. Tempel and Deborah Zekich	Norma and J.J. Uhran	Therese L. Wareham
David and Ingrid Stalle	Nicholas K. Terrell	Mr. and Mrs. Enrique J. Unanue	Mr. and Mrs. Kurt L. Warning
Mr. and Mrs. James Stanczak	Troy Terry	Eric Urbanski	Mr. and Mrs. Daniel Warren
Sharon and Nils Stangenenes	Mr. and Mrs. Richard J. Thennes	Jill and David Uswajesdakul	Laura S. Washington <sup>†</sup> and Michael William Richmond
Emily and Stephen Stanley	Kanjana Thepboriruk	Elsa Vaintzettel and Louise Larsen	Ludwig Wasik and Caitlin Rawlins
Eric Staswick	Walter F. Thiele	Michael Valitchka and Jessica Morris	Elaine D. Wayne
Mr. and Mrs. Steven Stefani	Kathryn S. Tholin and Steven K. Starr	Mr. and Mrs. Robert C. Vallone	Stanley Wearden and Deborah Davis
Mr. and Mrs. Kurt J. Steib	Carolyn M. Thomas and Patti Thomas	Mr. and Mrs. Gerald Van Kollenburg	Leonard L. Weber
Mr. and Mrs. Richard A. Steinke	David Thomas	Mr. and Mrs. Jack Van Orden	Mr. and Mrs. Andrew J. Weddig
Mr. and Mrs. Phillip L. Stern	Mr. and Mrs. Nick Thomas	John D. Van Pelt and Sharon M. Quintenz	David Weible
Mr. and Mrs. Michael J. Stock	Richard and Aurea Thomas	Melody A. Van Wermeskerken	Richard and Karen Weiland
Mr. and Mrs. Howard L. Stocker	Mr. and Mrs. Robert W. Thomas	John M. VanderLinden and John Wm. Butler, Jr.	Claire Ann Weimann
Harriet C. Stone	Robert L. Thompson	Dr. and Mrs. Peter O. Vandervoort	Dianne Weinand
Maura and Daniel Stout	Valerie Thorp-Rosenberg and Robert Rosenberg	Mr. and Mrs. Nicholas Van Holsbeke	Mr. and Mrs. Gerald A. Weiner
Robin and Jim Straus	Gregory and Gretchen Tieder	Christine E. Varela and Angela Varela	Susan Weiner
Mr. and Mrs. Donald Strauss	Dr. and Mrs. David C. Tiemeier	Mr. and Mrs. Joseph Vargo	Mary Jo E. Weis
Gary L. Strawn	Barbara Tighe	Donna Vaughan	Mr. and Mrs. Jerome S. Weiskopf
James R. Streicker and Mary W. Stowell	Anna Timmons	Fernando Velazquez	Mary Weisman and James Weisman
Mr. and Mrs. John J. Streit	Margaret B. Tinzmann and Otto Tinzmann	Daniel P. Venske	Gene J. Weiss, MD
Lisa and Kevin Stringer	Katherine E. Tisdahl and Pat Hughes	Mr. and Mrs. Leonard M. VerVers	Joanne Weitzel
Mr. and Mrs. Theodore A. Struve	Juliet and Eastman Tiu	Mr. and Mrs. Randolph M. Videkovich	Mr. and Mrs. Paul Wells
William Sturch	Diane Marie Tkach and James Freundt	Guacolda Reyes and Hector Vielma	Joan Werhane and Jill Werhane
Mr. and Mrs. Glen C. Suda	Poh Toe and Wei Sun	Mr. and Mrs. James R. Vieregg	Randy and Emily Wexler
David Sundquist and Terri Schultz	Virginia Tolk	Daniela Viera	Dr. and Mrs. Samuel S. Wexler, DDS
Sian Sutcliffe and Sean Taylor	Mr. and Mrs. Alvin V. Tollestrup	Paul Von Hoff	Willard E. White
Mr. and Mrs. George Sutherland	Mr. and Mrs. Wm. Ronald Tomecko	Matthew J. von Konrat <sup>‡</sup> and Genea Pitts	Mr. and Mrs. Marlon Whiteeagle
Mr. and Mrs. Harold Sutton, Jr.	Caitlin Townsend	Mary Wadleigh	Mr. and Mrs. Casey Whitmire
Mr. and Mrs. Mark Sutton	Mr. and Mrs. Gregory Tracey	Dr. and Mrs. Albert F. Wagner	Laura A. Wilber
Hobart K. and Janis F. Swan	Mr. and Mrs. James M. Trapp	Shmuel and Eliyahu Wahli	Fiona and Steve Wilcher
Mr. and Mrs. Edwin L. Swanson	Mr. and Mrs. Carl Traynor	Rosa E. Walke	Chris Williams and Holly Newhouse
Nathan Swanson	Dana Shepard Treister and Dr. Michael Roy Treister	Mr. and Mrs. Herschel D. Wallace III	Darnell Williams <sup>‡</sup> and Gene Smothers
Mr. and Mrs. David W. Swartz	Mr. and Mrs. Barton G. Tretheway		Dr. and Mrs. David B. Williams
Loretta B. Sweeney			Elaine Williams
Patrick Sweeney and Sharon Brown-Sweeney			
Mr. and Mrs. Steven G. Sweetser			
Mr. and Mrs. Barry Swenson			



Megan K. Williams<sup>E</sup>  
 Nancy and Robert Williams  
 Christine and Geoffrey Williamson  
 Mrs. Robert H. Wilson  
 Scott R. Wilson and Phylis Ellis  
 Mr. and Mrs. Timothy R. Wilson  
 Mr. and Mrs. O'Donnell Winchester  
 Kelvin Wing  
 Mr. and Mrs. James R. Wise  
 Anna Wojcik  
 Mr. and Mrs. Jason Wojno  
 Kathleen M. Wolfersberger and Cheryl Wolfersberger  
 Dorothy H. Wolff and Eric S. Wolff  
 Edmund J. Wolff  
 Grace Wong and Andrew Warren  
 Mr. and Mrs. Zachary Worshill  
 Patricia A. Worth  
 Randall Wosilus  
 David and Kay Wulf  
 George F. Wunder and Carol E. Mattes  
 Min Xiao  
 Mr. and Mrs. Brian Yamaguchi  
 Rosalind Yang and Eric Bowden  
 Megan Synenki Yea and Richard Yae  
 Nancy Ying  
 Hana Yoo  
 Janice C. Young  
 Richard F. Young  
 Mr. and Mrs. Solomon Yudeloviteh  
 Denis M. Zamirowski  
 William F. Zandrew  
 Tina M. Zekich  
 Claudio Zeledon Guzman and Rachel Belair  
 Mr. and Mrs. Brian Ziebart  
 John and Linda Zimnie  
 Mr. and Mrs. Earl Zingraf  
 Mr. and Mrs. Edward J. Zulkey

## The Edward E. Ayer Society

The Edward E. Ayer Society recognizes donors who remember the Field Museum through bequests, trusts and other planned or life income gifts.

Anonymous (23)  
 Barbara and Steven Adelman  
 Marilyn Alsdorf  
 Mary Jane Arnam  
 Donald and Betts Baepler Endowment for Ornithological Study  
 Mr. and Mrs. James H. Banach  
 Randolph and Lorraine Barba  
 Mr. and Mrs. Robert D. Becker  
 Helen R. Beiser, MD  
 Susan M. Benton<sup>T</sup>  
 Ruth and Robert<sup>D</sup> Berns  
 Christopher Boebel and Glenna Eaves  
 Willard L.<sup>T</sup> and Susan K. Boyd  
 Richard T. Brannegan  
 Frederick W. Brooke III  
 Mrs. George R. Brumlik  
 Leo R. Buckert  
 Judith A. Caloud  
 Thomas and Dianne Campbell  
 Rita and John<sup>T</sup> Canning  
 Clarissa H. and Henry T.<sup>D</sup> Chandler  
 Neil M. Chisholm  
 Josephine Chyatte  
 Mr.<sup>T</sup> and Mrs. Worley H. Clark, Jr.  
 Mr. and Mrs. William D. Coates  
 Mr. and Mrs. Stephen F. Condren  
 Mr.<sup>D</sup> and Mrs. Frank W. Considine  
 Mark Crane  
 Rebecca Davidson  
 Cheryl and Michael Del Campo  
 Janet W. Diederichs

Gary and Candace Drimmer  
 La and Philip Engel  
 Fabio Fabbri  
 Carl B. Fausey  
 Mary and Bruce Feay  
 Suzette Feher  
 Dr. and Mrs. Curtis B. Frank  
 Penny and John E. Freund  
 Wilbur<sup>T</sup> and Linda Gantz  
 William E. and Helene<sup>D</sup> Gardner  
 Lyle Gillman  
 Georgean Goldenberg  
 Robert and Beth Gordon  
 Norman C. Greenberg and Gilda M. Greenberg  
 Evelyn R. Greene<sup>D</sup>  
 Timothy and Joyce Greening  
 Mr.<sup>T</sup> and Mrs. Lewis S. Gruber  
 Tonja Rizai Hall  
 Jeanne M. Hansen<sup>D</sup>  
 Betty S. Hess<sup>D</sup>  
 David D. Hiller<sup>T</sup>  
 John and Marjorie Hines  
 Mary P. Hines  
 Peggy L. Hoberg  
 Anita and James Hornbrook  
 Mrs. Arlys R. Hunt  
 Datin Tan Fui Lian and Datuk Dr. Robert F. Inger  
 Edward Jerkey  
 Stacy L. Johnson  
 Mr. and Mrs. Robert A. Jones, Jr.  
 Kathleen and Alex Kallend  
 Mr. and Mrs.<sup>T</sup> Dennis J. Keller  
 Mr. and Mrs. Jerry M. Kelly  
 Richard<sup>TE</sup> and Jan Lariviere  
 Fay and Daniel Levin  
 Robert E. Lewis, PhD<sup>D</sup>  
 Gail J. and Robert B.<sup>T</sup> Loveman  
 Mr. and Mrs. Bernard A. Mack, Jr.  
 Ann C. Mallow  
 Marie Spinozzi Marotta  
 Nancy A. McDaniel  
 William B. McDonald and Ptah Sekhmat Osiris  
 Erma S. Medgyesy

Robert and Lois Moeller  
 Anthony G. Montag, MD and Katherine L. Griem, MD  
 Anne M. Morgan<sup>E</sup>  
 Sandra L. Mueller  
 James and Sandra Napolitan  
 John P. Nielsen  
 Karen A. Nordquist  
 John R. O'Connell<sup>E</sup>  
 Irma Parker  
 Dr. and Mrs. William R. Parkhurst  
 Joseph and Jo Ann Paszczyk  
 Marie E. Peruscini and Edward C. Bapple  
 Susanne Petersson and Daniel Rozkuszka  
 Mr. and Mrs. Richard J. Pigott  
 Mrs. John W. Pocock<sup>D</sup>  
 Julia Potter  
 Mr. and Mrs. Mane Pritza  
 Mrs. Alfred Lunt Putnam  
 John R. Rahn and Patricia E. Rahn  
 Dominick S. Renga  
 Alan Resetar<sup>E</sup> and Donna Resetar  
 Richard F. Reynolds  
 Sheila T. Reynolds<sup>D</sup>  
 Anita J. Rogers  
 Mr. and Mrs. Benjamin Rooks  
 John W.<sup>T</sup> and Jeanne M. Rowe  
 David L. Schlotterback  
 Douglas M. Schmidt  
 Franklin R. Schmidt  
 Patricia O. Schnadig  
 Thelma L. Schwartz  
 Monica and Stephen Sentoff  
 Mr. and Mrs. G. Curtiss Shaffer II  
 Bob and Charlene Shaw  
 David Shayne  
 Louise M. Sherman  
 Joanne Silver  
 Adele S. Simmons<sup>T</sup>  
 Rebecca Gray Smith  
 Gabriela and Scott Sparacio  
 Duane E. and Christine M. Stout  
 Steven Strohmeier<sup>E</sup> and Josie Brown  
 Judith B. Sugarman

Lawrence and Margaret  
Tomaszek-Witry

Gerald M. Torrence

Linda J. Volino

Rose and Robert Wagner

David A. Wargowski

Drs. Johannes and  
Julia R. Weertman

Nestor R. Weigand, Jr.

Dianne M. Weinand

Barbara H. West<sup>o</sup>

Claudia L. Winkler

Barbara A. Wolf

James G. Young

Mr. and Mrs. William B.  
Zigterman

Christine C. Zogus

### 2017 Estates & Bequests

The Field Museum  
recognizes the following  
individuals for their  
bequests, legacies,  
and estate gifts

Anonymous (2)

Ricardo M. Basch

Mrs. Robert Adams Carr

Henry T. Chandler

Rose Marie Craig

Mrs. Joseph N. Field

Dr. Evelyn Frank

Betty S. Hess

Susan D. Hoyne

Florence J. Mikowski

Reverend Edgar Peara

Helen J. Petersen

Betty D. Prout

Rose L. Shure

Jane B. and Chester D. Tripp

Nancy L. Wald

Lawrence G. Wilcox

### 2017 Matching Gift Companies

The following companies  
generously matched gifts  
from their employees,  
retirees, or directors  
in supporting the Field  
Museum in 2017.

Anonymous

Aetna

Apache Corporation

ArcelorMittal

AT&T Inc.

BP America Inc.

Caterpillar, Inc.

CME Group Foundation

ExxonMobil Foundation

The Field Foundation of Illinois

GCM Grosvenor

GE Foundation

Goldman, Sachs & Co.

W.W. Grainger, Inc.

IBM

Ilex Corporation

ITW

Johnson Controls, Inc.

Masco Corporation

Robert R. McCormick  
Foundation

Northern Trust

The Pfizer Foundation, Inc.

Quarles & Brady, LLP

RLI Employee Matching  
Gift Program

William Blair & Company

### 2017 Gifts In-Kind

Herb Alpert and Lani Hall Alpert

Beam Suntory

Susan M. Benton<sup>†</sup> / Butler  
Rubin Saltarelli & Boyd LLP

Chicago Blackhawks  
Foundation

Chicago Cubs

Drinker Biddle & Reath LLP

Free Spirit Media

Mr. and Mrs. Richard Guzik

United Airlines

### Volunteer Leadership

#### WOMEN'S BOARD EXECUTIVE COMMITTEE

The Women's Board  
promotes the Field  
Museum's scientific  
programs, exhibitions,  
and educational outreach.  
Members facilitate  
philanthropic activities  
to provide essential  
unrestricted and  
restricted support.

Susan Clark McBride  
*President*

Susan Faurot  
*Vice President*

Christine Ott  
*Vice President*

Kelli Klauber  
*Secretary*

Megan Hoffman  
*Treasurer*

Peggy Bodine  
*Member at Large*

Sarah Taich  
*Member at Large*

Susu Block  
*Member Engagement Co-Chair*

Barbara Brown  
*Annual Appeal Co-Chair*

Barb Brown  
*Field Dreams Co-Chair*

Beth Crownover  
*Education Advisor (ex-officio)*

Amy Findlay  
*Member Engagement Co-Chair*

Karen Gray-Krehbiel  
*2017 Gala Chair*

Beth Glass  
*Field Dreams Co-Chair*

Donna Greenberg  
*2017 Women in Science  
Luncheon Co-Chair*

Beth Kauffman  
*Outreach Initiative Co-Chair*

Kathleen Klaeser  
*Immediate Past President*

Connie Magnuson  
*Membership Co-Chair*

Deanne McLean  
*2017 Women in Science  
Luncheon Co-Chair*

Corrie Moreau  
*Science Advisor (ex-officio)*

Amanda Rutledge  
*Membership Co-Chair*

Allison Schmitt  
*Annual Appeal Co-Chair*

Patricia Schnadig  
*Women in Science Chair*

Liz Sharp  
*Annual Appeal Co-Chair*

Kim White  
*Nominating Chair*

Lynda Williams  
*Outreach Initiative Co-Chair*

#### PRESIDENT'S LEADERSHIP COUNCIL EXECUTIVE COMMITTEE

The President's Leadership  
Council is an auxiliary group  
of established professionals  
with an interest in civic and  
philanthropic activity.

Members support  
Museum initiatives through  
expertise-based volunteer  
work and utilize their  
personal and professional  
networks to raise the  
profile of the institution.

Ryan Ruskin<sup>†</sup>  
*Chair*





### The Women's Board

The Women's Board hosted the Museum's annual fundraising gala on Saturday, October 21, 2017 as an opening celebration for *Ancient Mediterranean: Cultures in Contact*. The gala—which included a cocktail reception, pop-up performances, dinner, and dancing—was chaired by Karen Gray-Krehbiel, past Women's Board President. Trustee Wilbur H. Gantz III was honored with the *Marshall Field V Award for Distinguished Leadership*, in recognition of many years of exemplary service and philanthropy. The event raised more than \$2.2 million for Museum operations and was attended by more than 550 guests.

Women's Board fundraising impacts many areas of the museum from unrestricted support through the Gala and Women's Board Annual Appeal, to project-specific giving from Women's Board members and their families, and contributions to Field Museum scientists through the Field Dreams program. The Women's Board's annual Women in Science Luncheon continues to grow, underwriting internships, graduate fellowships, and—new in 2018—post-doctoral positions at the museum. The Women's Board is making progress toward its campaign pledge of \$2 million to establish the Women's Board Youth Engagement Endowment, strengthening the Museum's education outreach and programs for Chicago youth. The Field Museum is grateful to the Women's Board for 52 years of generosity and leadership!



**At the annual gala,  
the Women's Board  
recognized Trustee Bill  
Gantz with the *Marshall  
Field V Award for  
Distinguished Leadership*.**

**FIELD ASSOCIATES  
EXECUTIVE COMMITTEE**

The Field Associates are committed to engaging young professionals through dynamic networking and leadership opportunities, unique programs, meaningful service, and fundraising to support scientific discovery and public education.

- Beth Schmidt<sup>T</sup>  
*President (2017)*
- Ryan VanHolsbeke<sup>T</sup>  
*President (2018)*
- Jeff Skender  
*Vice President*
- Michelle Sotak  
*Treasurer*
- Aniz Ruda  
*Secretary*
- Matt Berding  
*EVOLVE*
- Paul Butler Diaz  
*Programming*
- Anna Cheuvront  
*Programming*
- Samantha Dietz  
*Membership*
- Jennifer Guskey  
*Development*
- Joseph Hernandez  
*Membership*
- Casey McCarthy  
*Communications*
- Lindsay Soukup  
*EVOLVE*
- Caitlin Townsend  
*Communications*

**ANTHROPOLOGY ALLIANCE**

The Anthropology Alliance promotes interest in and support of the Field Museum’s anthropological research and collections.

- Susan Mikalauskis  
*Chair*
- Joyce Chelberg
- Aimee Genova
- Melissa Genova Hill
- Morris Goodman
- Joyce Greening

- Misty Gruber
- Patti Malloy
- Jim Stola
- Sheila Whalen
- Carl Wolf

**Field Museum  
Volunteers**

Field Museum volunteers contribute their time and skills to advance the Museum’s mission. Behind-the-scenes and in public exhibitions, volunteers support Museum staff and visitors alike.

**500+ HOURS**

- Irene Broede
- Drew Carhart
- John DeWerd
- Michael Ferrer
- Christine Frazer
- Peter Gayford
- Gayle Guzik
- Richard Guzik
- Bernice Jacobs
- Janis Lariviere
- Peter Lowther
- Joann Martinec
- Jeffrey Schroder
- William Sherry
- Kurt Zahnle
- Elaine Zeiger
- Steven Zitowsky

**200 to 499 HOURS**

- Eric Ahlgren
- Stephen Anderson
- Robert Andresen
- Thomas Anton
- Jan Marie Aramini
- John Balaban
- Mery Elyn Baron-Pocius
- Janice Bell Kaye
- Anthony Bellos
- Sharon Benjamin
- Betty Bergstrom
- Richard Bloomfield
- Robert Boswell
- Theresa Boswell

- Christopher Brink
- Alan Brookes
- Robert Cantu
- Mary Jo Cappitelli
- William Carroll
- Robert Case
- Ellis Caspary
- Snehal Chavda
- Carole Cotter
- Edward Coughlin
- Pam Coughlin
- Coleman Czajkowski
- Harpreet Datt
- Philip Dittmann
- Bill DuBois
- John Dunn
- Thomas Durica
- Lauren Fitts
- William Franz
- Glenn Gabanski
- Gerard Gagne
- Andrew Gallardo
- Renee Goddijn
- Ann Grelyak
- Jonathan Hane
- Mary Harland
- Mattie Harris
- Beverly Harris
- Joyce Hecht
- John Hill
- Mary Pat Hofer
- Jeff Hoswell
- Norene Jamieson
- Madeline Jenkins
- Judy Johanson
- Gregory Johnson
- James Kase
- Nancy Kaufmann
- Mary Ann Khan
- Elzbieta Kolano
- Sandra Kramer
- Conor Langs
- Joanne Levy
- Kenneth Manchen
- Etta McKenna
- Lettie McSpadden
- Susan Monge

- John Morris
- David Nanberg
- Megan Nolte
- Karen Nordquist
- Marie Orendach
- Frederick Orendach
- Mildred Osgood
- Mane Pritza
- Anita Punkay
- Loran Recchia
- Theresa Regan
- Susan Reinke
- Judith Rom
- Michael Roth
- Esther Schechter
- John Schmadeke
- Annette Schmit
- Karen Sharpe
- Elizabeth Simmons
- Terri Sinnott
- Robert Somrek
- Beth Spencer
- Robert Spieler
- Marc Stackler
- James Stola
- Donna Stone
- Ali Sultan
- Wayne Svoboda
- Jeffery Taugner
- Rebecca Taylor
- Thomas Tervanis
- Rose Tibayan
- Amanda Turner
- Jesse Tzeng
- Darren Vilmin
- Kristen Wacker
- Phyllis Walden
- Jacoba Ward
- Tabitha Willis
- Sarah Wisniewski
- Huini Wu
- William Zandrew
- Howard Zar





## In Memory of Richard Gray

The Field Museum noted the passing in 2018 of one of its singular contributors: Richard Gray. As an art dealer and founder of The Richard Gray Gallery, he was admired for his eye and his intellect. Richard offered the Field expert advice as the Museum pursued the largest, most complete *Tyrannosaurus rex* fossil in the world—SUE. On October 4, 1997, amid the drama of Sotheby's live auction, it was Richard Gray who guided the Field's winning bid. Richard took as much pride in bringing SUE to the Field as the Museum does sharing this treasure with the world. Richard and his wife, Mary, are counted among the most generous supporters of many of Chicago's cultural and educational institutions.

### Commemorative Gifts

The following donors made gifts to the Field Museum in the name of a friend or loved one.

#### IN HONOR OF

**Bob Andersen and Elaine Quinn**

Mr. and Mrs. Neil Broesch

**Andy, Casey, and Nora Baltensperger**

Kathryn Baltensperger<sup>E</sup> and Matthew Fredrickson

**John Bates<sup>E</sup>**

Patricia M. Erickson  
Mr. and Mrs. Arnold Kanter  
Michael Lewis

**Judith S. Block<sup>T</sup>**

Virginia and Gary Gerst

**Mr.<sup>T</sup> and Mrs. Norman R. Bobins**

Mr. and Mrs. Alan G. McNally

**Lisa and Tell Coffey**

Carol Norcross

**Conserve Chicago**

James and Alexia Vanek

**Jim W. Croft**

Anonymous

**Cupcake the Dinosaur**

Laura Baugh

**Deanna D. Desmond<sup>E</sup>**

Shannon Doyle

**Susan Faurot**

Mr. and Mrs. David S. Dudzinski  
Gail Niemann and Douglas Farr

**Kevin A. Feldheim<sup>E</sup>**

Eileen Feldheim

**Ann Flossi**

Mr. and Mrs. Albert E. Frank

**Wilbur H. Gantz III<sup>T</sup>**

Paul W. Earle and Ellen Rudnick  
Margaret Gantz  
Beverly Joutas

Robert Myers

Catherine Peponis

**Rose Gergerich**

Garth Gergerich

**The Glass Family**

Mr. and Mrs. George A. Lorenz

**Kathleen C. Golembiewski<sup>E</sup>**

Noah Cruickshank<sup>E</sup>

**Emily L. Graslie<sup>E</sup>**

Matthew Bernier  
Christopher Davis  
Kinsey M. Jackson  
Rose Nelson

**Kathryn Lynn Harris<sup>E</sup>**

Alanna Nissen

**Dorothy D. Hawley**

Mr. and Mrs. William A. Obenshain

**Lawrence R. Heaney, PhD<sup>E</sup>**

Karen H. Laner

**Andy Hershberger<sup>E</sup>**

Sian Sutcliffe and Sean Taylor

**Eddie Joe Holley**

Thomas and Ann Schultz

**Robert F. Inger**

Sophie and Jon Twichell

**Charles L. Katzenmeyer<sup>E</sup>**

Anonymous  
Patrick M. Madden  
Richard D. Malone

**Stephanie L. Kimmel<sup>E</sup>**

William Essig and Karen Essig

**Deborah Kolden**

Leia B. Ui Dhalaigh<sup>E</sup>

**Jan and Richard W.<sup>TE</sup> Lariviere**

Elise and Theodore Dysart  
Tracy LaQuey Parker  
Larry and Maxine Snider

**Gail J. and Robert M.<sup>T</sup> Loveman**

Anonymous (3)

**Katie Lux**

Nicole Nutter

**Crystal A. Maier<sup>E</sup>**

Gretchen Gillis

**Erin Meyer<sup>E</sup>**

Clarmarie Keenan

**Susan M. Neill<sup>E</sup>**

Bob Ericson

**Dr. Ngo and Mr. Horton**

Stephanie Kimmel<sup>E</sup> and Mike Conroy

**Carter O'Brien<sup>E</sup>**

Albert F. Ettinger and Susan Lannin

**Ginevra Stirling Ranney<sup>E</sup>**

William Rudnick and Lisa Walker

**Vicky Sanchez<sup>E</sup>**

Marilyn Jackson  
Jennifer Masengarb  
Gemma Mulvihill

**Jessica P. Sarowitz<sup>T</sup>**

Your Foundation Staff

**John C. Schmadeke**

Robert Schmadeke

**Patricia Schnadig**

Adrian R. Foster  
Mr. and Mrs. Eric R. Schnadig

**Liz Sharp<sup>T</sup>**

Arthur and Elaine Margulis

**Carmen Shepard**

James H. Niehoff and Jolie R. Macier

**Squirrel McNastyface**

Samantha Hakemian

**Usha Subramanian<sup>E</sup>**

Charles L. Katzenmeyer<sup>E</sup>  
Lisa Notter

**SUE**

Gail Edington  
Carl Hannah  
Kate Maude  
Bridget O'Brien  
Cheryl Smyth  
Nancy Vosnidou

**Robert H. Telfer<sup>E</sup>**

Carolyn Byerly-Dean

**Lily Thomas**

Mr. and Mrs. Tom Kingsbury

**Kimberly White**

Lynn Bromstedt

**Vida Carolina Wren Sanchez**

Michael Wren<sup>E</sup>

#### IN MEMORY OF

**Lucia Barba**

Anonymous

M. Dolores Moyado

Thelma L. Schwartz

Mr. and Mrs. Tom Sholeen

Mr. and Mrs. Duane E. Stout

Adrienne L. Szulczynski

**Christopher Buchen**

Ellen S. Buchen  
Richard Buchen

**Steve Burger**

Amy Radlinsky

**Patricia B. Couch**

The Couch Family Foundation

**Blanche Grady Cross**

Judith Cross

**Frank Dickman and Zenia Miarecki**

Mr. and Mrs. Paris Koulogeorgas

**Carolynne Flint**

Lewis Flint

**Clarence E. Foster**

Elizabeth Foster

**Jack W. Fuller**

Anonymous  
Bobolink Foundation  
Elliot H. Brown

Professor<sup>T</sup> and Lady Peter R. Crane

Winnie and Bob<sup>T</sup> Crawford

Janet W. Diederichs

Mr. and Mrs. Philip B. Doherty

Mary W. Graham

## In Memory of Robert H. Malott

The Field Museum was greatly saddened by the passing of Robert H. (Bob) Malott on April 4, 2018. He was the former CEO and Chairman of FMC Corporation and a highly engaged leader in Chicago's cultural and civic spheres. Bob and his wife, Ibby, in whose memory the *Malott Hall of Jades* is named, had a passion for the natural world and the stories of people from all cultures. The Museum is very grateful for Bob's friendship and straightforward counsel; for Ibby's dedication to the Field; and for the enduring philanthropy of the Malott family for more than 45 years.



Cornelia Grumman and James Warren  
David D. Hiller<sup>T</sup>  
Mr.<sup>T</sup> and Mrs. James S. Frank  
Charles L. Katzenmeyer<sup>E</sup>  
Mary Jane Keitel<sup>E</sup> and Mark J. Bouman, PhD<sup>E</sup>  
Mr. and Mrs.<sup>T</sup> Dennis J. Keller  
William C. Kelly, Jr.  
Lewis-Sebring Family Foundation  
Seth Lipsky  
Madigan Family Foundation  
Mr. and Mrs. Alan J. Magerkurth  
Mr.<sup>T</sup> and Mrs. John W. McCarter, Jr.  
Robert R. McCormick Foundation  
Clare Muñana<sup>T</sup>  
Mr. and Mrs. James O'Shea  
Nigel C. Pitman<sup>E</sup> and Maria Renata Pereira Leite  
Victoria Post Ranney and George A. Ranney, Jr.  
Ginevra Stirling Ranney<sup>E</sup> and Ben Ranney  
Mary Anne Rogers<sup>E</sup>  
Jeanne M. and John W.<sup>T</sup> Rowe  
Edward Seaton  
Tracey Shafroth and Michael Elam  
Mr. and Mrs. Scott C. Smith  
David Spadafora  
Warren and Susan Spencer  
Mr. and Mrs. Stanley Stasch  
Sophie and Jon Twichell  
Alaka Wali, PhD<sup>E</sup>  
Nancy Hamill Winter  
Mr. and Mrs. Douglas P. Woodlock  
Owen and Linda Youngman

### Patricia Georgouses

Thomas Crowley  
Patricia Grogan

### Gary Giannoni

Mr. and Mrs. Kevin R. Gallagher  
Mr. and Mrs. Lothar Nowag  
Jill Postma  
Mr. and Mrs. Hugh R. Worsham

### M. Warner Green, Jr.

Susan Barrett and Jonathan Sweeney  
Mr. and Mrs. Max L. Bloomquist  
Howard Burdett  
Seth M. Fisher  
Dennis and Ardelie Hugdahl  
Kirstin D. Hugdahl, OD  
Mr. and Mrs. Marvin E. Robeck  
Erika Robeck  
Mark R. Shafer  
Thrivent Financial for Lutherans  
Carolyn Burlingham Windom

### Elisabeth Smith Herald

James Herald

### Penelope June Hillsman

Morgan Hillsman

### Doris B. Holleb<sup>T</sup>

Jane Benson and David Hartley

### Herbert M. Hymen

Roger J. Hymen and Monika Cohen, MD

### James and Rion

Katie Rutenbar

### Barbara M. Louthan's Parents

Barbara Mankus Louthan

### Milton Mausner and Lou Zemel

David Mausner and Gale Zemel

### Hugo J. Melvoin<sup>T</sup>

Mrs. Hugo J. Melvoin

### Lenore B. Melzer

Mr. and Mrs. Howard A. Tyner

### Mary Elizabeth Murphy

Anonymous

### John Nordloh

Gregory and Gretchen Tieder  
Meredith Wotman

### Dorothy Anne Pensiero

Mr. and Mrs. Frank Pensiero

### Lottie J. Peterson

David C. Peterson

### Sheila T. Reynolds

Joan Langan-Maurer  
Nancy H. Schwartz  
Susan M. Walsh

### Janet A. Rosenberg

Beth Loeb

### Joseph Scarpaci

Jill Gerharz

### Karl P. Schmidt

Stuart Turner

### William T. Stanley, PhD<sup>E</sup><sup>D</sup>

Anonymous  
Mark Alvey<sup>E</sup>  
Patience E. Baach<sup>E</sup>  
Mr. and Mrs. Mark D. Dawson  
Cheryl and Michael Del Campo  
Kristen and Josh Jacobs  
Mr. and Mrs. Adam Kashuba  
Charles L. Katzenmeyer<sup>E</sup>  
Mr. and Mrs.<sup>T</sup> Dennis J. Keller  
Mr.<sup>T</sup> and Mrs. Jeffrey B. Keller  
Melissa K. Lee  
Nancy A. McDaniel  
Patricia B. Miller  
Mr. and Mrs. Robert P. Perkaus, Jr.  
Jill Reynolds and Dan Spitzer  
Mrs. Stephen W. Rothermel

Adrienne L. Szulczynski  
Matthew J. von Konrat<sup>E</sup> and Genea Pitts  
Michael Wright

### Virginia B. Thayer

Margaret K. Thayer<sup>E</sup>

### Daniel J. Vaughan

Hytham Almasri  
Katherine Babjak  
Timothy Hansen

### Robert Wilson

Laura M. Bartolo and Ronald J. Corthell

### Joseph T. Zich

Dennis and Marilyn Snider

### Richard J. Zientek, Sr.

Camille J. Zientek and Richard J. Zientek

## Collections Donations

Through generous gifts of objects and specimens, the Field Museum's collections have grown to become an indispensable scientific resource for scholars around the world. The Museum acknowledges the following donors who made gifts in 2017 to enhance the institution's collections.

## ANTHROPOLOGICAL COLLECTIONS

William and Robin Booth  
Donor

Dennis Gallagher  
Donor

Rev. Charlotte Shivers  
Donor

Marin (Mark) W. Denning  
Donor

Mary S. Thieme  
Donor

Jamie Lewis  
Fieldwork Collector

Alaka Wali  
Fieldwork Collector

Ian McCutcheon  
Donor

## BOTANICAL COLLECTIONS

Marcia Amaral  
Auckland War Memorial Museum  
Anna Balla  
California Academy of Sciences



Eszterházy Károly College  
Flora Richardson Foundation,  
Indiana

W. C. Gaswick

J. Graham

P. Leacock

Harvard University

Hiroshima University, Japan

Instituto de Botânica,  
São Paulo, Brazil

Jardim Botânico do  
Rio de Janeiro, Brazil

Missouri Botanical Garden

Murray State University

Muséum National d'Histoire  
Naturelle, Paris, France

National Museums of Kenya

National Museum of Nature and  
Science, Japan

New York Botanical Garden

Oregon State University

Rancho Santa Ana Botanic  
Garden, California

Smithsonian Institution

Doel Soejarto

Tbilisi State University, Georgia

University of Tsukuba, Japan

Universidad de Concepción,  
Chile

Universidad Nacional Pedro  
Ruiz Gallo, Peru

Universidad San Pablo-CEU,  
Madrid, Spain

Universidade Estadual Paulista,  
São Paulo, Brazil

University of California

University of Helsinki, Finland

University of Illinois

University of Kansas

University of South Carolina

University of Turku, Finland

L. Wallner

Matt von Konrat

## GEOLOGICAL COLLECTIONS

### Fossil Invertebrates

Dr. Daniel Blake

Jack Wittry

2017 FMNH Expedition  
to Eocene Green River Fm  
of Wyoming led by Dr. Lance  
Grande

Tim Nelson

Dr. Charles & Susan Shabica /  
Northeastern Illinois University's  
Mazon Creek Project

### Fossil Plants

2017 FMNH Expedition  
to Eocene Green River Fm  
of Wyoming led by Dr. Lance  
Grande

### Fossil Vertebrates

2016 FMNH Expedition to  
Jurassic of Utah led by Dr. Peter  
Makovicky; BLM permit

2016 FMNH Expedition to  
Jurassic of Utah led by Dr. Peter  
Makovicky; State of Utah permit

2017 FMNH Expedition to  
Cretaceous of Missouri led  
by Dr. Peter Makovicky;  
private land

Jack Wittry

Dr. Thomas Guensburg

2017 FMNH Expedition  
to Eocene Green River Fm  
of Wyoming led by Dr. Lance  
Grande

Mr. & Mrs. James E. Konecny

### Physical Geology/Meteorites

Jennika Greer

Terry Boudreaux

## LIBRARY COLLECTIONS

Dr. William T. Stanley

Edward J. Valauskas

Valdemar and Zdenka Schwarz

Dr. Bruce D. Patterson

Dr. Janet Voight

## ZOOLOGICAL COLLECTIONS

### Amphibians and Reptiles

Brookfield Zoo

Chris Broeckhoven

Jochen Gerber

Lois Graller

Joseph Milanovich

Estate of George Rabb

Mike Reed (Bay Beach Wildlife  
Sanctuary)

Alan Resetar

Bryan L. Stuart

Shedd Aquarium

Willowbrook Wildlife Center

### Birds

Bay Beach Wildlife Sanctuary

Chicago Bird Collision Monitors

Save Our American Raptors

Treasure Coast Wildlife Center

U.S. Geological Survey

Willowbrook Wildlife Center

Lori Adjeschek

Fran Alcantara

Alvaro Amat

Jen Anderson

Bob Andrini

Marie Angkuw

Patience Baach

Tim Balassie

Anna Balla

Sarah Bass

John Bates

Leslie Bayles

Susan Benning

Nancy Bigelow

Stephanie Bielke

Chris Bowman

Nancy Bradt

Dan Brinkmeier

Stephanie Brown

Tim Brtis

Peter Buol

Werner Buol

Meg Burns

Bonnie Bush

Elaine Carlson

Kevin Carroll

Pat Carson

Liz Challoner

Jan Chattler

George Chavez

Suzanne Checchia

Shivani Choudhary

Mary Clemense

Diane Cohen

Daryl Coldren

Sarah Coleman

Steve Constantelos

Andrew Cox

Linda Cox

Rita Crimmins

Kate Cronin

Kelly Cronin

Luke Dahlberg

Angela Daidone

Alissa Dalsing

Donnie Dann

Steve Deines

Mark DeSantis

Robyn Detterline

Benjamin Dimook

Larry Dirst

Joan Dittman

Mary Djurovic

Jennifer Dombeck

Ann Domek

Kelly Dougherty

Pamela Dowd

Cheryl Dudeck

John Dziadus

Glenna Eaves

Nancy Fagin

N. Farley

Marty Farrington

Pamela Feldman

Adam Ferguson

Margaret Fisher

Ryan Ford

Ursula Forhan

Bill Franz

P. Friend

Robert Frye

Glenn Gabanski

Shari Gallo

Kathleen Gillespie

Gerry Ginsburg

Thomas Gnoske

Susan Golland

Ingrid Gould

James Graham

Mark Grant

Ed Graskamp

Cindy Gray

Bruce Green

Kelly Green

Lindsey Gregori

Terri Griel

Suzanne Hackbarth

Shannon Hackett

Nate Hambel

Sandra Harms

Alyssa Harsha

Chris Hauser  
Ben Heins  
Mary Hennen  
Andy Hershberger  
Chris Hetrea  
Maria Hlohowskyj  
Scott Holingue  
Daniel Hooper  
Joanna Hosteny  
Roderick Hough  
Janice Humphrey  
Tamima Itani  
Deborah Jackson  
Carla Jaffe  
Kristin Jensen  
Susan Jicha  
David Johnson  
Glen Johnson  
Jessica Johnson  
Mark Johnston  
Chris Kadow  
John Kaiser  
Kelly Karki  
Becky Kass  
Joyce Keithley  
John Kelly  
S. Kendall  
John Kennedy  
Dennis Kingsley  
Steven Klink  
Ruth Knipmayer  
Grace Koehler  
Tom Koziol  
Brian Kraskiewicz  
Marcie Krause  
Larry Krutulis  
Ruth Kurczewski  
Sarah Kurtis  
Mary Lako  
Beth Lange  
Deborah Lasala  
Minju Lee  
Al Legzdins  
Hans Lim  
Jessica Lopez  
Carol Lovekin  
Gloria Lowther  
Peter Lowther  
Mary Loye

Carol Lundsmann  
Peggy Macnamara  
Bryn Maddox  
Chris Madsen  
Debbie Maher  
Crystal Maier  
Siddhesh Mukerji  
Chelsea Maguire  
Gail Marggraf  
Ben Marks  
Jennifer Marshall  
June Matayoshi  
Trish May  
Lynne Mecum  
Laura Mendoza  
Julia Meredith  
Jennifer Merrick  
Kortney Mettle  
Paul Miessler  
Lorraine Miller  
Patricia Miller  
Shahrozod Mohammadian  
Nancy Mores  
Laura Muraoka  
Madeleine Murphy  
Robert North  
Jeanette Okulinski  
Noelle Neel  
Katie O'Neill  
June Paez  
Roger Palmer  
Cathy Patrick  
Joy Peplinski  
Dorothy Pesch  
Therese Peskowits  
Caitlin Peters  
John Phelps  
Margarita Poromanska  
Marina Post  
Jeff Prendki  
Annette Prince  
Catherine Principe  
Robert Prosis  
Megan Pryce  
Michael Quigley  
Jennifer Raber  
Teri Radke  
Emmanuel Ramirez  
Rawlins Riles

Brad Roback  
Maggie Robertson  
Gerri Rode  
Bob Russ  
Jill Russell  
Katherine Sadlier  
Ben Sanders  
Rachel Santymire  
Michael Scelfo  
Alexandra Scharf  
Tom Schlipmann  
May Schlotzhauer  
John Schmadake  
Susan Schmidt  
E. Schreiber  
Leslie Shad  
Barbara Shaw  
Akiko Shinya  
Jeff Skrentny  
Alison Sloan  
Jeff Smith  
Natalie Smith  
Paige Smith  
Chava Sonnier  
Georgiana Srachta  
David Stagman  
Sandra Stearns  
Jim Steffen  
Candace Steffens  
John Stoddard  
Kalman Strauss  
Supriya  
Charles Swagel  
Sandy Swanson  
Betty Sweetland  
Barb Sydow  
Ann Tanner  
Linda Tartof  
Robb Telfer  
Jim Tibensky  
Colleen Tiesch  
Peter Tolzmann  
Dianne Traut  
Mike Trinchitella  
Tom Trinley  
Suzanne Turner  
Sarah von Fremd  
Victoria Velinski  
Denise Verret

Elizabeth Vickory  
Jude Vickory  
Anita Victorin  
Alec Victorsen  
Mary Vieregg  
Janet Voight  
Jordan Voskuil  
Kristin Wacker  
Edward Warden  
Sean Ware  
Chris Warneke  
Ronald Weber  
Marcia Weflin  
Stephanie Wellin  
Mary Wiesen  
Kyle Wikler  
David Willard  
Carrie Willingham  
Margaret Wilson  
Bob Wild  
Ashley Woltman  
Sue Woltman  
David Wong  
Ann Woodward  
Nancy Zeglen  
Elaine Zeiger  
John Zeman  
Mike Zerbe  
Svetlana Zhexembeyeva  
Isa Zielsingki  
Sophie Zivovic

#### Fishes

John G. Shedd Aquarium  
Arturo Angulo  
Katherine Criswell  
Ng Hee  
Daniel Popok  
Ryan Thoni  
Douglas Weber  
Wilfredo Matamoros  
Diego Elias  
Andrea Miehl  
Thomas Anton  
Kevin Swagel  
Mark Sabaj

#### Insects

Mark Milne  
Charles Hadded



Rod Rood  
D.K. Whaley  
L. Dersch  
Paul Skelley  
R. Forkner  
R. Vedder  
Shuhei Yamamoto  
Paul Thomas  
Al Newton

#### Invertebrates

Stephanie A. Clark  
Eugene V. Coan  
Joan Damerow  
Emilio F. Garcia  
Jochen Gerber  
Andrew Gloss  
Mike Grimm  
David G. Herbert  
Albert J. Lindar  
Charlotte T. Lindar-Gorbunov  
Constantine Mifsud  
Timothy A. Rawlings  
John G. Shedd Aquarium

Nguyen N. Thach  
David A. Walker  
Emily Young  
**Mammals**  
Ball State University  
Brookfield Zoo  
Bay Beach Wildlife Sanctuary  
DuPage County Airport  
Minnesota Department  
of Natural Resources  
Shedd Aquarium  
Willowbrook Wildlife Center  
Bernard Agwanda  
Akpato Betin  
Julian C. Kerbis  
Steven M. Goodman  
Larry R. Heaney  
Tyrone Lavery  
Link E. Olson  
Noe de la Sancha  
Lauren E. Smith

Charles M. Swagel  
Kevin Swagel  
Sadic Waswa  
Paul W. Webala  
Elzbieta Kolano  
C. Yanny-Tillar  
Marcy Krause  
A. Caccavo  
A. Prince  
A. Caccavo  
B. Bush  
B. Shaw  
D. Pesch  
D. Stagman  
J. Cajandig  
L. Challoner  
M. Loye  
M. Lopez  
N. Bigelow  
S. Harms  
V Cortis

If you feel an error has been made in presenting this donor honor roll, please contact the Office of Institutional Advancement at [annualreport@fieldmuseum.org](mailto:annualreport@fieldmuseum.org).

#### Photo Credits

Cover – Alvaro del Campo. Contents Page: Yaguas – Alvaro del Campo, Dinosaur – Pamela Gaible, Richard's Letter – John Weinstein. Science: Yaguas Fish – Alvaro del Campo, Snake – Alvaro del Campo, Girls on boat – Alvaro del Campo, Olivier – John Weinstein/GN91017\_43d, Turtles book – Indiana University Press, Biodiversity of Mountains – Jian Huang, Archaeology and Globalization – John Weinstein/A115035d\_019A, Dino Cousins – Museo Argentino de Ciencias Naturales, Corrie Moreau – John Weinstein/GN92024\_083Bd, Rat – Velizar Simeonovski, Biodiversity Dashboards – mol.org, Ancient Agriculture – Ana Londono, Monarchs – Karen Bean/GN92037\_237d, Climate Change Forum – Spoon Photo & Design, Bathtub – J.P. Brown, Mask/Alsdorf Hall – Kwakiutl mask – Kyle Flubacher, Field Museum, Butterfly – Field Museum, Collections Staff – Field Museum, Transcription Party – Shannon Lange, First Nations – Jamie Lewis, Raven Bowl – Jamie Lewis, Collections Photo – Field Museum, Collections Club – Caitlin Vaughn. Public Engagement: Sarcophagus – John Weinstein/A115251d\_034A, Vase – John Weinstein/A115309d\_020A, Ancient Cultures in Contact Exhibition Hall – John Weinstein/GN92449\_007Bd, Peregrine – Peggy Macnamara, Jurassic World Dino – Imagine Exhibitions/NBC Universal, Beetles – Field Museum, Bushman – John Weinstein/Z94418\_19d, Meteorites – John Weinstein/GN91195\_11Ad, Bollywood – John Weinstein/GN92431\_008d, March for Science Crowd – John Weinstein/GN92388\_160d, March for Science Ladies – John Weinstein/GN92388\_008d, Ancient Americas Speaker – John Weinstein/GN92381\_269d, Pappan Family – John Weinstein/GN92381\_069d, Day of Facts – Field Museum, Young Professionals Leadership Summit – Elizabeth Swain, In the Burbs – Google Maps, Flower – Karen Bean/GN91546\_012d, Women in Science – Field Museum, Women in Science Speaker – Field Museum, Gala – Kyle Flubacker Photography, Grainger Science Hub – John Weinstein/GN92335\_065Ad, Design Challenges – Field Museum, Field for All – Alyssa Harsha, curioCITY – Carolina Kaufman, The Back Room – Zachary James Johnston. Honor Roll: Evolve – Field Museum, Evolve Dancers – Field Museum, Conservation Celebration – John Weinstein/GN92389\_155Ad, Giving Day – Field Museum, Field of Champions – Robert Carl, Members Night – Michelle Kuo, Gray Obbit – Robert Carl, Malott Obbit – Malott Family, Back Cover Frog – Alvaro del Campo

#### PUBLISHER

Charles L. Katzenmeyer

#### PROJECT MANAGER AND EDITOR

Franck Mercurio

#### ASSISTANT EDITOR

Chandler Garland

#### CONTRIBUTORS

Ken Angielczyk  
Erica Au  
Odette Barrientos  
Aimee Davis  
Trish Farrell  
Gary Feinman  
Gantz Center staff  
Beth Gaus  
Katie Golembieski  
Andy Hershberger  
Stephanie Hornbeck  
Mary Jane Keitel  
Keller Center staff  
Tyrone Lavery  
Corrie Moreau  
Anne Morgan  
Lisa Niziolek  
Rick Ree  
Olivier Rieppel  
Matt Von Konrat  
Ryan Williams  
Mike Wren

#### DESIGNER

Bark Design, Chicago

#### PRINTER

The Fox Company,  
Milwaukee, WI



The Field Museum gratefully acknowledges the generous support it receives from the Chicago Park District, on behalf of the people of Chicago.

© The Field Museum,  
all rights reserved.



#### DIGITAL EDITION

[fieldmuseum.org/annual-reports](http://fieldmuseum.org/annual-reports)



## Thank you, Connie!

In March 2018, Connie Keller concluded a three-year term as Chair of the Field Museum's Board of Trustees. Connie joined the Board in 2005 and also served as Vice Chair for Science Action. During her time as Board Chair, she oversaw tremendous growth. Connie led Trustees in the development and approval of a new Strategic Plan, helped launch the Museum's current campaign, and led three immersive Trustee expeditions to leading museums in New York, Los Angeles, and Washington D.C. Connie and Dennis Keller's philanthropy has helped the Museum reach a new level of influence in its research and conservation. Trustees and staff are deeply grateful to Connie for her always-positive outlook, exemplary philanthropy, and thoughtful leadership.

# THANK YOU





*Ancistrus kelleriae*, a sucker-mouth armored catfish in the family Loricariidae. This species is endemic to the highlands of Guyana. Named in honor of Connie Keller and in gratitude of her leadership as Chair of the Board of Trustees for the Field Museum, where her unparalleled support of research and conservation work has led to the protection of more than 8 million hectares of South America forests and rivers.





**THANK YOU!**



1400 South Lake Shore Drive  
Chicago, Illinois 60605  
[fieldmuseum.org](http://fieldmuseum.org)

