





Dear Friends,

Thank you for making 2019 so memorable at the Field Museum. We are pleased to present this Annual Report chronicling our accomplishments—each fueled by your continuing investment in science and learning.

In the following pages, you will find remarkable stories of the Field's work: a 42-year longitudinal study connecting shrinking body sizes of migratory birds with climate change; discoveries of new species within our collections; and innovative personalized learning experiences for Chicago Public Schools students, and much more.

Research at the Field Museum will be expressed in new ways. The Negaunee Integrative Research Center—recently named to honor the Negaunee Foundation's generous support over many years—established an all new research focus on the environmental and biological issues behind the alarming decline in pollinator populations worldwide.

In addition, the Grainger Bioinformatics Center was created, thanks to a 10-year pilot program funded by The Grainger Foundation. Field scholars will use a variety of novel big-data analysis techniques to study Museum collections and unlock hidden patterns in nature. The Museum will also award an annual international bioinformatics prize to encourage the application of these new research techniques to some of the most pressing biological and environmental challenges of our time.

The Keller Science Action Center celebrated 25 years of conservation programs that have effected change in collaboration with communities in Chicagoland and around the world. What started as a department of two, is now an interdisciplinary team of 35 scientists and educators whose work is addressing urgent environmental challenges.

Your philanthropy bestows a unique responsibility on us—to be guardians and stewards of this iconic institution. We accept this charge with gratitude.

Sincerely,

Wilbur H. Gantz III
Chair, Board of Trustees

Richard W. Lariviere, PhD
President and CEO

(On the cover) A new mural of SUE the *T. rex* soon to be installed in SUE's gallery in the *Griffin Halls of Evolving Planet*. SUE the *T. rex* was found in South Dakota's Hell Creek Formation. From giant dinosaurs to tiny amphibians, the fossils in these rocks are a window into one of the best-understood ecosystems from the Age of the Dinosaurs.

The Field Museum fuels a journey of **discovery** across time to enable solutions for a brighter future rich in nature and culture. (pg. 2)

Its global **impact**—through research, conservation action, learning programs, and exhibitions—is anchored by a priceless collection of 40 million artifacts and specimens. (pg. 14)



More than 150 scientists work every day in the Field Museum's labs and around the world, leading scientific research and answering key questions about Earth and its peoples.

DISCOVERY

Migratory Birds are Shrinking

Field Museum's 40 million artifacts and specimens drive discovery behind the scenes every day. Whether billions of years old or recently collected, Museum specimens help scientists build a complete picture of evolution and change.

Every day since 1978, Museum scientists and volunteers started as early as 3:30am to collect birds that collide with buildings, adding more than 100,000 specimens to the Museum's collection. Dave Willard, PhD, Collections Manager Emeritus, has carefully measured all the birds and recorded data by hand for more than 40 years. The goal was to build a densely sampled time series from both spring and fall migration. Willard and his colleagues analyzed these data and discovered the overall body sizes of more than 52 species of migratory birds are shrinking.

One possible cause of this phenomenon is climate change. Animal body sizes are often tied to climate. Within a species, individuals living in colder regions tend to be bigger than their counterparts in warmer regions. And, since temperatures have crept up in the birds' summer breeding grounds in the last 40 years, researchers believe the shrinking of birds is related to the rising temperature of the planet.

(Opposite) Bird specimens collected by Dave Willard and volunteers near the Museum Campus.

New Prehistoric Shark Species Discovered in SUE’s Leftovers

When Field Museum scientists removed the rock surrounding SUE’s bones 20 years ago, they kept the leftover rock, or matrix. It’s fairly uncommon for museums to keep matrix from the fossils they find, but SUE was so unique that McCarter Collections Manager Bill Simpson thought there may be clues about SUE’s environment hidden in the leftovers. For almost a decade, the matrix sat in underground storage at the Museum, until a team of scientists and volunteers began meticulously picking through it and found the tiny fossilized teeth of a freshwater shark suspected to have lived in a river close to where SUE roamed. Led by Terry Gates (North Carolina Museum of Natural Sciences), the team named the shark *Galagadon nordquistae*—a nod to its spaceship-shaped teeth and to Karen Nordquist, Field Museum volunteer and benefactor who discovered the fossil. From studying the teeth, scientists determined *Galagadon* was likely less than two feet long. But while the shark didn’t break any size records, it reshaped what scientists thought about SUE’s environment.

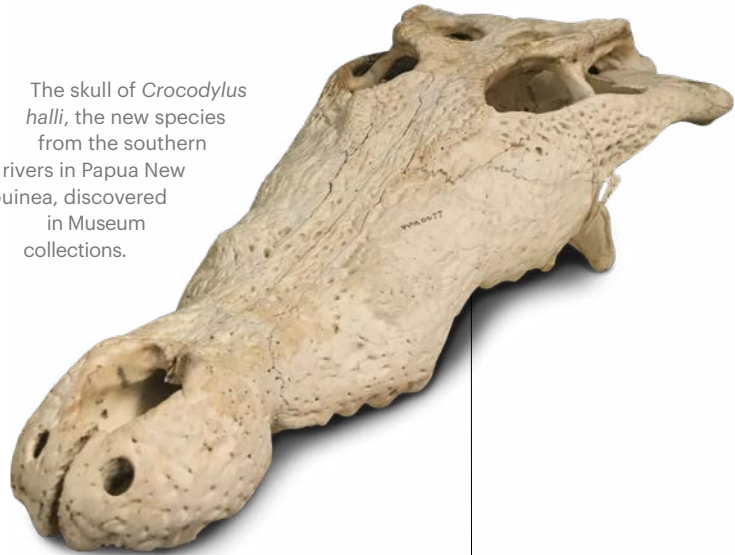


The fossilized tooth of *Galagadon nordquistae* found in SUE’s matrix. The shape of the tooth—which resembles the spaceship from the video game *Galaga*—inspired the name of the new genus.

A rendering of *Galagadon nordquistae* as it would have looked in the Cretaceous by scientific illustrator Velizar Simeonovski.



33 new species discovered by Field Museum scientists in 2019



The skull of *Crocodylus halli*, the new species from the southern rivers in Papua New Guinea, discovered in Museum collections.

New Species of Crocodile Right Under Our Snouts

The Field’s specimens are studied by scientists around the world. With a collection as vast and old as this, there are new discoveries hiding in the Museum’s drawers and cabinets waiting for someone to pick them up. Collections Manager Caleb McMahan, PhD, and his colleagues did just that when they synthesized new and old data on 90-year-old crocodile skulls in the collection and discovered a new species of New Guinea crocodile. This study shows that not all new species are discovered through fieldwork—highlighting the need for referential specimens and taxonomists in museums.

New Meteorite Lands in Field Museum Collections

On April 23, 2019, a meteorite fall was reported in Aguas Zarcas, Costa Rica (for which the meteorite is now named). Hundreds of stones were recovered within the projected strewn-field, several of which were gifted to the Field Museum by the Boudreaux Family, longtime supporters of the Field’s meteoritics research. The Aguas Zarcas is a carbonaceous chondrite and contains organic compounds like amino acids—the building blocks of life. A proposal by Philipp Heck, PhD, Robert A. Pritzker Associate Curator, to study the Aguas Zarcas meteorite was selected by the Museum’s Science and Scholarship Funding Committee to receive the 2020 Science Innovation Award. This competitive grant, made possible by an anonymous donor, is awarded each year to an innovative science project in any area of study at the Field Museum. Philipp and collaborator Yongsong Huang, PhD, (Brown University) are using the Aguas Zarcas to study some of the least-altered presolar and early solar system materials yet discovered, and hope it will yield unprecedented insights into the origins of our Solar System.

(Below) Philipp Heck, Head of the Robert A. Pritzker Center for Meteoritics and Polar Studies, presents the Aguas Zarcas meteorite with donor Terry Boudreaux and his son Evan Boudreaux.



The most commonly reported issue affecting pollinators is “colony collapse disorder”—when worker bees abandon their queen and a hive fails. However, this is not the only issue affecting the long-term health of bees and other pollinators.

Negaunee Integrative Research Center

The past decade has seen an alarming reduction in pollinator populations worldwide. Among the most important species on Earth, pollinators are crucial to the life cycles of many plants on which both ecosystems and humans depend.

The Field Museum established a new program to look into this issue. Its goal is to apply modern evolutionary biology theories to solve the root causes of pollinator decline. Underwritten by The Negaunee Foundation—a long-term donor to science at the Field—this work complements the Museum’s recent investments in genomics and bioinformatics. The program also has broad, long-term implications for agriculture, human health, and conservation.

In recognition of the Foundation’s extraordinary support, the Field renamed its research division the Negaunee Integrative Research Center in December 2019. “The Negaunee Foundation is a quiet giant,” said President and CEO Richard W. Lariviere, PhD. “They have funded core research programs for many years, pushing the Field to new levels of achievement. We are honored to recognize their contribution through the newly named Negaunee Integrative Research Center.”

In 2019, Field Museum scientists published

268

new journal articles
and **6 books**.

The published works of
Field Museum scientists
were cited more than

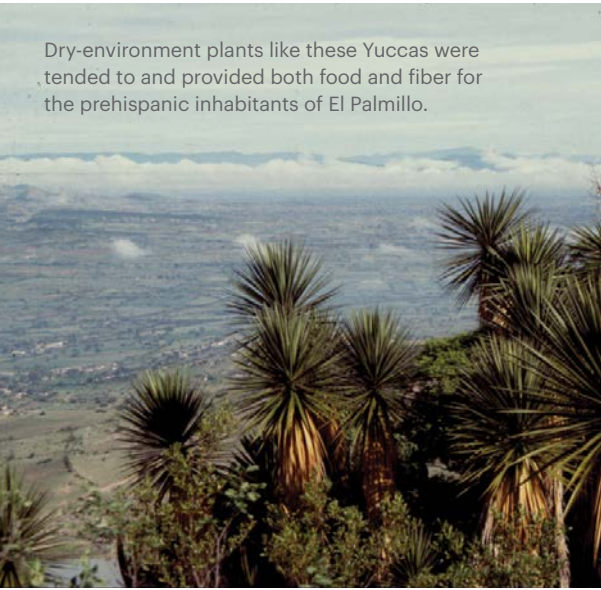
16,000

times by scholars from
around the world.



A Field Museum team led by Gary Feinman, MacArthur Curator of Anthropology, excavates a major palace at El Palmillo, a pre-Columbian Zapotec archaeological site in Oaxaca, Mexico.

Human
Impacts on
Earth **Started
Millenia Ago**



Dry-environment plants like these Yuccas were tended to and provided both food and fiber for the prehispanic inhabitants of El Palmillo.

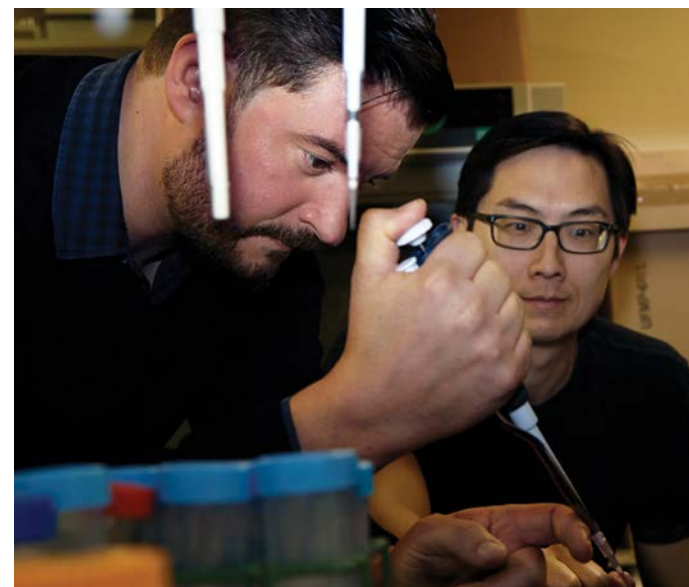
As climate change, global warming, and renewable energy dominate the national consciousness, it's easy to assume these issues are exclusive to the modern world. But a large collaborative study published in *Science*—which included Field Museum curators Gary Feinman, PhD, and Ryan Williams, PhD—reveals early humans across the entire globe changed and impacted their environments as early as 10,000 years ago. Humans in this time period began clearing forests to plant food and domesticating plants and animals. Early herders also changed their surroundings through land clearance and selective breeding. Although these shifts occurred at varying paces, they were widespread and provide insights on which practices had the most destructive impacts. The results of this study, however, are more optimistic than they seem. Now that researchers have a record of the origins and distribution of environmental changes across space and time, they can study these data to discover what solutions people in the past used to mitigate the negative effects of deforestation, water scarcity, and other hazards.

The Amazon Basin reaches its western limits along the Andean Mountain chain. This is one of the most species-rich landscapes in the world and a long-term focus of Field Museum research and conservation efforts. It is also home to 15% of all the bird species in the world, including the White-chinned Sapphure, *Hylocharis cyaneus* (right).



Piecing Together
the Ancient Amazon

A longstanding mission of Field Museum research is to study the patterns and processes of biodiversity across space and time. This broad picture informs us about the status of biodiversity and the issues it faces today. In an increasingly international effort, many Field Museum scientists and their collaborators published research in 2019 that helped clarify the history of biodiversity in the New World tropics. This includes a new paper modeling how the geological history of the Andes has led to the formation of the modern Amazon Basin over the last 30 million years. Curator of Birds John Bates, PhD, and MacArthur Curator of Mammals Bruce Patterson, PhD, also led studies on species of birds and mammals from the region that further document the ongoing connectivity between the Andes and Amazon in terms of both pattern and process. This new knowledge enhances our understanding of the ecology and evolution of the biota and expands the capacity for science throughout the Neotropics. It also helps the Museum and its collaborators identify solutions for ecological conservation and improved quality of life for indigenous communities.



Co-Directors of the Grainger Bioinformatics Center Felix Grewe, PhD, and Rick Ree, PhD, extract the DNA of a specimen that will later be sequenced for analyses.

In 2019, Field Museum scientists received

\$1,156,778

through **10 new federal grants** for new research.

Grainger Bioinformatics Center

The Grainger Bioinformatics Center was launched to test different ways of applying “big data” solutions to natural history research. This innovative pilot program combines the Field’s collections with the latest computer science theories to unlock crucial information hidden in large datasets. The answers Field Museum scientists hope to find will inform immediate threats to biodiversity and help them understand how genetics affect an organism’s evolution. With this information, they can begin to enable solutions for the biological and ecological issues Earth faces today.

Thanks to the generosity of The Grainger Foundation, the Museum will lead the world in this rapidly developing area of study. Over the next ten years, the Grainger Bioinformatics Center will empower a small, nimble group of scientists to forge new discoveries by taking risks and developing new analytical tools.

“The Grainger Bioinformatics Center is the first dedicated big data center at a museum. It will fundamentally change natural science research for generations to come,” said Thorsten Lumbsch, PhD, Vice President of Science and Education and Curator of Lichenized Fungi. “We are grateful to The Grainger Foundation for encouraging the Field to take this bold step and look forward to what we will discover about nature, our planet, and ourselves.”

(Opposite) One of the projects being conducted by scientists in the Grainger Bioinformatics Center is measuring the curves of bird eggs to understand the effects of egg shape on bird evolution.

In 2019, the Field Museum provided professional experience and training for:

147

college and high school interns

76

graduate students

19

postdoctoral students

Genetic Sequencing Unlocks an Eon of Plant Evolution

In October 2019, an international association of more than 200 plant scientists—including Field Museum’s McCarter Collections Manager and Head of Botanical Collections Matt von Konrat, PhD—released genetic sequences for more than 1,100 plant species. This breakthrough was part of the One Thousand Plant Transcriptomes Initiative (1KP), a global collaboration to examine the diversification of plant species, genes, and genomes across the entire billion-year history of green plants.

The study’s findings reveal the timing of the origins, expansions, and contractions of gene families contributing to genetic innovations enabling the evolution of all green plant lineages. The history of how and when plants developed the ability to grow tall and make seeds, flowers, and fruits provides a framework for understanding plant diversity, including annual crops and forest tree species. Overall, the new picture of evolutionary relationships provided by 1KP has led to new hypotheses about the origins of key structures and processes in green plants.



McCarter Collections Manager Matt von Konrat photographs specimens in the field.
(Left) A *Pleurozia* liverwort specimen from Fiji.

Cities are Key to Saving Monarch Butterflies



It’s easy to think of cities as the enemy of nature, but two new peer-reviewed papers by Field Museum scientists in the Keller Science Action Center show that cities may be crucial for the survival of pollinators, like the monarch butterfly. The monarch population has declined over 80% in the last 20 years, and scientists warn that as milkweed—the only plant monarchs can lay their eggs on—continues to disappear across the United States, these butterflies could too. Conservation ecologists Abigail Derby Lewis, PhD, and Mark Johnston, PhD, and their team coupled field research with high-resolution land cover and land use data to map where milkweed already occurs across metropolitan regions and where there’s potential to add more. They conclude that cities could support 15 to 30 percent of the 1.8 billion milkweed stems needed to support not only a healthy population of monarchs but other crucial pollinators as well.

(Left) A monarch butterfly feeds on the nectar of a flower planted near Ida B. Wells Drive. Cities like Chicago are teeming with conservation-compatible habitat opportunities.

The Field Museum is dedicated to sharing facts, supporting communities, and training the next generation of scientists.

IMPACT

A scientist reviews the day's notes of specimens observed and collected during a rapid inventory in Amazonian Colombia.

Keller Science Action Center Celebrates 25 Years

For a quarter of a century, scientists from the Field Museum's Keller Science Action Center have translated research into conservation action for improved community well-being.

What began in 1994 with two staff members is today an interdisciplinary team of 35 scientists and educators dedicated to advancing conservation and cultural understanding. These experts leverage the Field Museum's collection of 40 million biological specimens and cultural materials to address some of the world's most urgent environmental challenges. Much has been accomplished in the last 25 years:

26M
acres of
forest protected

200+
new species
to science
discovered

40k+
youth engaged
in environmental
education

200+
communities
engaged in
conservation

1,000+
Field Guides
published

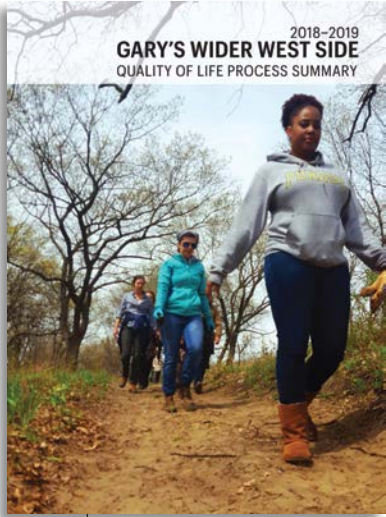
8
new protected areas
created along the
Putumayo River



31st Rapid Inventory

In late 2019, Field Museum scientists collaborated with a diverse team of scientists, Indigenous peoples, and government partners to conduct its 31st rapid inventory—this time in the Putumayo River region. This marked the Keller Center's 10th inventory in this remote rainforest region on the border of Peru and Colombia. The area is home to eight Indigenous ethnicities and an epicenter of species diversity, but also faces threats of illegal gold mining, logging, and drug trafficking. It is also an axis of illegal logging, gold mining, and coca trafficking. Over four weeks, biologists and other natural scientists assessed the hydrology, geology, plants, and animals of the region, while social scientists documented community organization, natural resource practices, and local visions for the future. This inventory is a key component of the Museum's goal to conserve 75% of the Putumayo basin over the next five years.

(Above) Social scientists work with an Indigenous organization in Colombia to make a timeline of the group's history.



(Left) This 2019 report summarizes the Keller Center's quality of life planning with local residents and stakeholders of the wider west side of Gary, Indiana.

A Museum Approach to Enhancing Quality of Life

The Keller Science Action Center continued bringing together partners and community members in a Quality of Life Planning process on the wider west side of Gary, Indiana. The process culminated with a community celebration and publication of a process summary identifying community assets and shared local goals, including commitments from partner organizations to support their fulfillment. The Keller Center worked with residents to begin developing cultural and nature-based programming at Gary's Brunswick Park and nearby preserves. The Nature Conservancy, another partner, teamed up with residents to clear invasive growth around Brunswick Park's community building. The work in Gary is modeled after a Quality of Life Planning methodology developed by the Keller Center and undertaken with communities in Chicago, Kankakee County, and the Andes-Amazon.

Climate Strike

On September 20th the Field participated in the student-led Global Climate Strike as part of its commitment to Earth's future. The strike, comprised of four million people across 5,000 sites in 156 countries, called for action on climate change. More than 150 staff and volunteers marched with 3,000 Chicagoans from Grant Park to Federal Plaza to stand up for science. Chief Curiosity Correspondent Emily Graslie served as one of the Chicago strike's speakers, emphasizing the science behind human-driven climate change and inspiring the public to participate in climate activism.



“West Bull Nose—Chicago, IL—2016.” This is an exit to Chicago’s 33-foot diameter tunnel where water now flows freely into the holding reservoir. When there are storms and overflow, the water is diverted through the deep tunnel system into reservoirs to await treatment at a nearby wastewater plant. After it’s processed and disinfected from human bacteria, the clean water goes back into the waterways.

State of Water: Our Most Valuable Resource

While the thought of transforming run-off and sanitary sewage into drinkable water may be off-putting to some, Guggenheim Fellow Brad Temkin challenges the viewer to see the beauty in all forms of water with his stunning photography. *State of Water* featured 30 of Temkin's large-scale color photographs of water treatment plants in Atlanta, Chicago, Houston, Los Angeles, Milwaukee, Philadelphia, Phoenix, and Seattle. A Chicago-based photographer, Temkin's work advocates for the conservation and reclamation of Earth's most valuable resource.

The exhibition inspired the Metropolitan Water Reclamation District of Greater Chicago Board of Commissioners to pass a resolution recognizing the Field Museum and Temkin for documenting the critical infrastructure designed to protect water.



State of Water: Our Most Valuable Resource is supported by the Phillip and Edith Leonian Foundation.

(Right) A young volunteer plants purple coneflower, a native plant that supports the migratory monarch butterfly.

Partnership for Thriving Communities and Nature in the City

The Field Museum fuels journeys of discovery beyond the walls of the Museum through partnerships and programming. In 2019, the Field Museum’s Keller Science Action Center and the Chicago Housing Authority (CHA) partnered to improve quality of life and urban biodiversity. CHA is the third-largest public housing agency in the nation, serving 20,000 low-income households. The partners worked with communities and non-profits to install 2,000 native plants in five sites across the city. The first community planting, in the Altgeld Gardens neighborhood, created 77 native and edible plant gardens. Then, on a single day in August, almost 1,000 native prairie plants were added to the grounds of four senior housing properties. Residents and their families joined in the planting, telling stories, spreading seeds, and watering native plants. The Keller Center looks forward to expanding this partnership to new CHA sites and communities in the future.



Native American Heritage Month

During November—Native American Heritage Month—the Field Museum hosted a series of activities, many of which invited participation and leadership from Chicago’s Native community. Anthropology staff offered a close-up look at materials from the Museum’s collections in the *Grainger Science Hub*. The Museum welcomed visitors into the *Native North America Hall*, where guests enjoyed a preview of a major exhibition in the midst of renovation.

The month’s festivities culminated in a Native American Heritage Celebration with Native community members and artists, who shared music and dance performances alongside beading and quillwork demonstrations. As Museum staff prepare to introduce visitors to a transformed *Native North America Hall* in late 2021, the Field strives to steward positive relationships with the communities represented in the collections.

(Left) Ojibwe bandolier bag from Wisconsin recently deinstalled from permanent display. Custom storage housing made by collections management staff working on the renovation of the *Native North America Hall*. (Catalog Number 15301)

Learning by Numbers

The Museum’s Learning Center is driven by a passion for sharing science education. From field trips to special museum programming to professional development workshops, the Field partners with educators and schools across Chicago in innovative ways to expand science education both in the Museum and in the classroom. In 2019, the Learning Center’s outreach was substantial:

217k+

visitors engaged with the Discovery Squad, Design Challenges, and Curiosity Stations

89k+

visitors engaged in Grainger Science Hub activities

150k+

students visited on field trips

60k+

students interacted with the N. W. Harris Learning Collection

91k+

families served in the Crown Family PlayLab

775

teachers attended professional development programs



A young explorer gathers toy corn at the Pueblo in the Crown Family PlayLab.



The **Teen Volunteer Program** encourages teens to engage with all areas of the Museum. During the summer of 2019, 78 teens volunteered 5,000 hours, interacting with more than 88,000 visitors. They explored the Museum, participated in team-building and communication activities, met with professionals and scientists to learn about different museum careers, and went on behind-the-scenes tours of the collections. After the summer programming ended, 40 teens continued their volunteer work during the school year.



(Left) Chicago Public Schools children learn about Mastodons and other early mammal species in the Griffin Halls of Evolving Planet on a field trip.

Personalized Learning Experiences at the Field Museum

Through a collaboration with the Chicago Public Schools Department of Personalized Learning, a new program, MY PLACE (Museums + You: Personalized Learning And Community Engagement), leverages museum assets and educational expertise to elevate personalized learning—or tailored instruction based on a student’s unique needs, strengths, and interests—in Chicago schools. This program empowers teachers and administrators to work alongside Field Museum educators to tailor support from the Learning Center into a custom partnership to meet each school’s goals. In 2019, this program was launched in three different schools with diverse needs. The Learning Center provided guided goal-setting, collaborative instructional planning, use of museum resources in the classroom, and focused field trips designed to complement classroom curriculum.

Fantastic Bug Encounters!

Created by the Museum of New Zealand Te Papa Tongarewa, *Fantastic Bug Encounters!* showcased different types of adaptations displayed in bug species. The exhibition, which included stunning models from Weta Workshop, inspired Field Museum visitors of all ages to learn how bugs are perfectly adapted to their environments and how humans have learned from those adaptations to create new technologies. The Field added its own unique element with a live bug zoo that allowed visitors to interact with 14 amazing insect species, some of which are native to Illinois. Museum staff facilitated these live experiences, teaching guests about the importance of the bugs they may find in their backyard as well as the science happening at the Museum every day.

Fantastic Bug Encounters! has been developed by the Museum of New Zealand Te Papa Tongarewa with Weta Workshop Limited



Major Sponsors:



A young guest enjoys a beetle slide in this hands-on, family-friendly exhibition.

Arshdeep Singh, a keen-eyed 10-year-old photographer, noticed owlets nesting in a pipe in the city of Kapurthala, Punjab, India. Spotted owls like these usually live in tree hollows, but move into urban areas as a result of deforestation.

Wildlife Photographer of the Year

In 2019, the Field Museum hosted *Wildlife Photographer of the Year* from the Natural History Museum, London. The exhibition was comprised of large backlit prints of the winning photography from an annual competition held in England since 1964. The competition attracts thousands of entries from professional and amateur photographers all over the world, bringing the most enthralling wildlife photography into one collection. The Field Museum was proud to present this exhibition from the prestigious competition throughout 2019.

WILDLIFE PHOTOGRAPHER OF THE YEAR IS DEVELOPED AND PRODUCED BY THE NATURAL HISTORY MUSEUM, LONDON.



Field Museum Major Sponsor:



© Arshdeep Singh, India



The Field Museum's accomplishments are made possible by a dedicated community of supporters. We gratefully acknowledge these donors for their generosity in 2019.

HONOR ROLL

Members and donors enjoy going behind the scenes for hands on experiences with Field Museum science and collections.

68th Annual Members' Nights

On May 9 and 10, the Field Museum hosted its annual Members' Nights. Nearly 6,500 members, donors, and guests enjoyed special, after-hours access to the Museum and many behind-the-scenes areas. Members were able to step inside the Paleobotany collection storage area for the first time, invent their own animal with Poet-in-Residence Eric Elshtain, and enjoy a *Game of Thrones*-inspired view of the fishes collection. Along with Geology staff, members celebrated the 50th anniversary of the Allende and Murchison meteorite falls, and the moon landing. They also learned from exhibits registrars how museum artifacts and specimens are cared for, displayed, packaged, and shipped around the world.



Board of Trustees

Members of the Board of Trustees offer leadership and philanthropy to make the Field Museum an extraordinary force for science and learning. Thank you.

EXECUTIVE COMMITTEE

Wilbur H. Gantz III
Board Chair
Richard W. Lariviere, PhD^E
President and CEO
Constance T. Keller
Chair Emeritus and Vice Chair, Governance
John L. Bucksbaum
Vice Chair, Facilities and Administrative Services
Dr. Richard A. Chaifetz
Vice Chair, Government Relations
Richard W. Colburn
At Large
Robert W. Crawford, Jr.
Vice Chair, Audit
Marsha A. Cruzan
Vice Chair, Development
Marshall B. Front
Vice Chair, Investment
Judy Greffin
Vice Chair, Finance
Caryn Harris
At Large
David D. Hiller
Vice Chair, Integrative Research
Jeffrey B. Keller
Vice Chair, Science Action
Margaret B. MacLean
Vice Chair, Collections
Bobby Mehta
Vice Chair, Learning

Michael O’Grady
At Large
Jessica P. Sarowitz
At Large
Matthew K. Simon
Secretary
Dawn L. Solomon
Vice Chair, Exhibitions
Mark Tebbe
Vice Chair, Technology
W. Rockwell Wirtz
Board Chair Designate and Vice Chair, Marketing
Jason M. Wortendyke
Vice Chair, Retirement and Benefits

TRUSTEES

Arjun Aggarwal
Bob Arthur
Susan M. Benton
Judson Bergman^D
Howard B. Bernick
Amy E. Best
John A. Canning, Jr.
Gregory C. Case
David L. Cotton
Mark J. Cozzi
Sir Peter Crane, FRS
Kermit R. Crawford
Oscar A. David
Louis T. Delgado^D
Roger K. Deromedi
Marshall Field V
Jamee C. Field Kane
Michael E. Flannery
Jeffrey T. Foland
James S. Frank
Karen Z. Gray-Krehbiel
Jack M. Greenberg
Lewis S. Gruber
Adnaan Hamid
Michael L. Keiser

Shannon M. Kennedy
Richard L. Keyser
William C. Kunkler III
Richard M. Levin
Diane von Schlegell Levy
John P. Molloy
Madhavan K. Nayar^D
Neil S. Novich
James J. O’Connor, Jr.
Christopher A. O’Herlihy
Kenneth W. O’Keefe
Asutosh Padhi
Aurie A. Pennick
John F. Podjasek III
Peter B. Pond
John Rau
Thomas S. Ricketts
Michael J. Sacks
Dilara Sayeed, PhD
Nydia S. Searle
Michael E. Severino, PhD
Jai Shekhawat

Jennifer L. Sherman
Adele S. Simmons
Mary L. Smith
Judson B. Snyder
Thomas S. Souleles
Marcus A. von Kapff
Mark R. Walter
Everett S. Ward
Laura S. Washington
Melvin D. Williams
Patrick Wood-Prince

EX-OFFICIO TRUSTEES

Donna L. Greenburg
Jesse H. Ruiz, Esq.
Ryan S. Ruskin
Alin W. Schubert
Kevin P. Stineman

Margaret B. Stineman
Ryan VanHolsbeke

NATIONAL TRUSTEES

Herb Alpert
Gail K. Boudreaux
Jean-Claude Brizard
Daniel Diermeier
James J. Glasser
Louise R. Glasser
Lani Hall Alpert
Leo F. Mullin
Charles W. Palmer
David C. Parry
Michael Tang
Elie A. Weaver
Nancy Hamill Winter

LIFE TRUSTEES

Jean R. Armour
Judith S. Block
Norman R. Robins
Willard L. Boyd
Worley H. Clark, Jr.
James W. Compton
James A. Delaney III
Thomas E. Donnelley II
Michael W. Ferro, Jr.
Wayne E. Hedien
Pamela K. Hull
Richard M. Jones
William H. Kurtis
Robert B. Loveman
Scott P. Marks, Jr.
John W. McCarter, Jr.
James J. O’Connor, Sr.
John W. Rowe
David M. Tolmie
Robert L. Wesley
Miles D. White
William J. White



125th Anniversary Symposium

On September 16, the Museum hosted a day-long curated event to mark its 125th anniversary. Trustees and donors were treated to tailored experiences including behind-the-scenes tours with Field leaders—some of the nation’s most distinguished academics and museum professionals. Guests experienced a preview of the new *Native North America Hall*, engaged in conversations about the Museum’s leadership in conservation science, and stopped to smell the coneflowers in the new Rice Native Gardens.

(Above) Assistant Conservator Nicole Passerotti, Seneca, Bear clan, (left) discusses conservation documentation of a recently deinstalled painted hide artifact with Dennis Keller (Center) and Nancy Braund-Baruch.

Founders’ Council Leadership Committee

The Founders’ Council is the Field Museum’s premier annual giving society. Members contribute \$2,500 or more to support every aspect of the Museum’s mission.

Tom Ricketts^T
Co-chair
Kevin Stineman^T
Co-chair
Margie Stineman^T
Co-chair

Donna Freeman
Peter Freeman
Jeffery Keller^T
Molly Keller
Bob Loveman^T
Lis Meeker
Jenny Morehead
Brad Morehead
Lanny Passaro
Marty Peterson

John F. Podjasek III^T
Ryan S. Ruskin^T
Allison Schmitt
Stephen Schmitt
Patricia Schnadig
Liz Sharp
Heather Sparling
Jessica Steffensen
Doug Walter
Pam Walter

Ryan Whitacre

Members of the Chairman’s Circle demonstrate an exceptional commitment to the Field Museum’s mission through annual gifts of \$25,000 or more. We gratefully acknowledge these leaders in philanthropy.

\$75,000+ CHAIRMAN’S CIRCLE DISTINGUISHED LEADERSHIP

Dr.^T and Mrs. Richard A. Chaifetz
Linda and Wilbur^T Gantz
Sue Ling Gin Charitable Foundation
Mr.^T and Mrs. Michael L. Keiser
Mr.^T and Mrs. Dennis J. Keller
Mr.^{TD} and Mrs. Madhavan K. Nayar
Jessica^T and Steve Sarowitz
Mr. and Mrs.^T Michael D. Searle
Jai R. Shekhawat^T
Mr.^T and Mrs. W. Rockwell Wirtz

\$50,000 TO \$74,999 CHAIRMAN’S CIRCLE LEADERSHIP

Anonymous
Mr.^T and Mrs. Norman R. Bobins / Bobins Family Fund at The Chicago Community Foundation
Rita and John^T Canning
The Crown Family
Colette Evans and John Rau^T
Mr.^T and Mrs. Marshall Field
Mr.^T and Mrs. James S. Frank
Karen Z. Gray-Krehbiel^T and John H. Krehbiel, Jr.
Mr. and Mrs.^T King W. Harris / Harris Family Foundation
Pamela K. Hull^T
Mr.^T and Mrs. Richard L. Keyser

The Knowles Foundation

Diane v. S.^T and Robert M. Levy
Swati and Bobby^T Mehta
The Negaunee Foundation
Jeanne M. and John W.^T Rowe
Cari and Michael J.^T Sacks
Robin and Mark^T Tebbe
Kimbra and Mark^T Walter

\$25,000 TO \$49,999 CHAIRMAN’S CIRCLE

Anonymous
Anu and Arjun^T Aggarwal
Bob Arthur^T and Susan Anderson
Judy and Howard^T Bernick
Amy E. Best^T
Jacolyn and John^T Bucksbaum
Greg^T and Mamie Case Charitable Fund
Henry T. Chandler^D
Mark Cozzi^T and James Goeke
Winnie and Bob^T Crawford
Marsha Cruzan^T and Thomas McGinnis
Mr.^T and Mrs. Oscar A. David
Mr.^T and Mrs. Roger K. Deromedi
Janet and Craig Duchossois
Efroymsen Family Fund^T
Dr. and Mrs. Eugene F. Fama
Lori and Michael^T Flannery
Marshall B. Front Family Charitable Foundation / Laura De Ferrari and Marshall B. Front^T
Judy^T and Bill Greffin
Colette and Wayne^T Hedien
David D. Hiller^T
Jamee Field Kane^T / The Edith B. and Lee V. Jacobs Fund No. 1
Mr.^T and Mrs. Jeffrey B. Keller
Shannon Kennedy^T
The Knowles Foundation

William C. Kunkler III^T and Susan Crown
Margaret B. MacLean^T
Mr.^T and Mrs. Neil S. Novich
Mr.^T and Mrs. Michael O’Grady
Kenneth W. O’Keefe^T and Jason Eric Stephens
Joe Ortiz and Becky Dykiel
Irma Parker
Mr.^T and Mrs. John F. Podjasek III
Alicia and Peter^T Pond
Cecelia and Thomas^T Ricketts
Michael E. Severino, MD^T
Adele S. Simmons^T and John L. Simmons
Julie and Matthew K.^T Simon
Mr.^T and Mrs. Jud Snyder
Dawn L.^T and David J. Solomon
Cia and Tom^T Souleles
Michael F. Tang^T
Elie Weaver^T and Hilton Weinberg
Kim^D and Miles^T White
Melvin D. Williams^T
Mr.^T and Mrs. Patrick B. Wood-Prince
Jason Wortendyke^T and Ariel Knowles Wortendyke

\$10,000 TO \$24,999 FOUNDERS’ COUNCIL CONSERVATOR

Anonymous (6)
Judith S. Block^T
Barbara^D and Roger Brown
Rosemarie and Dean L. Buntrock
Carol and Tom Butler
Rebecca Childers Caleel
Dianne and Thomas Campbell
Casden Family
The Comer Foundation Fund

Cecilia and Froilan Concepcion
Mr. and Mrs. James J. Conrad
Mr.^T and Mrs. Kermit R. Crawford
Daphne and John Cunningham
Janet W. Diederichs
Mr. and Mrs. Robert Feitler
The Foland Family^T
Mr. and Mrs. Robert E. Gallagher, Jr.
Alice and Richard Godfrey
Mr.^T and Mrs.^T Jack M. Greenberg
Mary P. Hines
Marshall^D and Doris^D Holleb Family
Dr. and Mrs. Wayne J. Holman III
J. Thomas Hurvis
Mrs. Noel Kaplan
Anna Marie and Jerry Kelly
Mr. and Mrs. Keith Kizziah / Malott Family Foundation
Robert A. Kubicka, MD
Jan and Richard^{TE} Lariviere
Lavin Family Foundation
Michael A. Leppen / Miriam U. Hoover Foundation
Richard M. Levin^T and Sally J. McDonald
Gail J. and Robert B.^T Loveman
Mr.^T and Mrs. John W. McCarter, Jr.
Mr.^T and Mrs. John P. Molloy
Mr.^T and Mrs. James J. O’Connor, Jr.
Mr.^T and Mrs. Chris O’Herlihy
Cathy and Bill Osborn
Asutosh Padhi^T and Rita Anand-Padhi
Helen S. Reed

S&H Fund, a Donor Advised Fund of Renaissance Charitable Foundation
Marilyn L. Schweitzer and Michael A. Firman
Mrs. William L. Searle
Mr.^D and Mrs. Romolo Sidoli
Kass F. Sigal
Harold B. Smith
Liz Stiffel
Margie^T and Kevin^T Stineman
Judith B. Sugarman
Captain Dave Truitt
Mr.^T and Mrs. Marcus A. von Kapff

\$5,000 TO \$9,999 FOUNDERS’ COUNCIL SURVEYOR

Anonymous (3)
Jean R. Armour^T
Verna L. Baughman, MD
Susan M. Benton^T
Mr. and Mrs. David W. Bernauer
Mr. and Mrs. Philip D. Block IV
David Bohan and Kathryn Kemp
Mr. and Mrs. Andrew W. Brown
Linda and Vincent Buonanno
Mr. and Mrs. Theodore R. Butz / The Butz Foundation
Mary and Jim Costello
Mark Crane
Judy and Tapas Das Gupta
Susan and Mark Dawson
Thomas R. Doler
Monica E. Donath
Glenda W. Duncan
Eldred-Harland Charitable Fund at The Chicago Community Foundation
Ginny and Peter Foreman

HONOR ROLL

Mr. and Mrs. Philip M. Friedmann	Mr. and Mrs. Robert Raimondi D. Roskin	Susan and Stephen Baird	Rebecca Davidson	Mr. and Mrs. Thomas Z. Hayward, Jr.	Becky and Lester Knight	Alexandra C. and John D. Nichols	Mr. and Mrs. William Radzevich Ginevra [£] and Ben Ranney	Mr. and Mrs. Richard G. Schultz	The Stirling Charitable Fund / Mr. and Mrs. James P. Stirling	Nancy L. Wald [£]	April R. Wilson
Mr. and Mrs. Camillo Ghiron	Mr. and Mrs. Robert J. Sanborn	Lorraine and Randy Barba	Laura and Dave Davis	Mr. and Mrs. J. Duncan Healy	Gail and Barry Kohl	James H. Niehoff and Jolie R. Macier	Ginevra [£] and Ben Ranney	Susan and Alan Sebulsky	Mr. and Mrs. Ivan G. Strauss	Mr. and Mrs. John R. Walter	Claudia L. Winkler
Mr. [†] and Mrs. [†] James J. Glasser	Karla Scherer	Mr. and Mrs. Aaron A. Barlow	William L. Davis III	Dawn and Ted Helwig	Patricia Kosmerl	Jolie R. Macier	Anita J. Rogers	Monica and Stephen Sentoff	Mr. and Mrs. Steven A. Rosen	Mr. and Mrs. Douglas H. Walter	Mr. and Mrs. William E. Wolf
Donald Grasso	Mr. and Mrs. Gordon I. Segal / Segal Family Foundation	Jack Barry	Rebecca E. Deaton	Cheryl and Michael Del Campo	Mr. and Mrs. Robert R. Kunkler	Jennifer and Craig Niemann	Mr. and Mrs. Steven A. Rosen	Robert M. Shafis and Carol A. Erickson	Steven Strohmeier [£] and Josie Brown		Mr. and Mrs. Elizabeth Yntema and Mark Ferguson
Mary L. and Richard [£] Gray	William W. Shaw	Kara and Thomas Barta	Cheryl and Michael Del Campo	Mr. and Mrs. Robert O. Delaney, Jr.	Mary Lawlor	Christina J. Norton and John A. Biek	Robert A. Rosholt and Sharon L. Brunelle	Robert M. Shafis and Carol A. Erickson	Mary and Harvey Struthers	Dilnaz and Kaiser Waraich	
Jean Greene	Bessie Shields Foundation	Joyce and Frank Bauer	Mr. and Mrs. Robert O. Delaney, Jr.	Owen Deutsch and Rona Talcott	Wende Fox Lawson and Jim Lawson	John A. Biek	Mr. and Mrs. Jeffrey S. Ross	Mr. and Mrs. Jeffrey S. Sharp	Usha Subramanian [£] and Deepak Raghunathan	Carrie and Jay Weaver	Mr. and Mrs. Robert Zentner
Joyce and Timothy Greening	Richard M. Skolly and Kate A. Feinstein	Helene Beisecker and Jean Ann White	Mr. and Mrs. James W. DeYoung	Robert Hevey, Jr. and Constance M. Filling	Deirdre LeMire		Susan B. Rubnitz	Sally Sharp	Kathleen and Lawrence Sullivan		
Patricia and William J. Hagenah	Mr. and Mrs. Neele E. Stearns, Jr.	Deborah A. Bekken [£] and Richard G. Kron	Richard A. Domanik and Janice Y. Domanik	Mr. and Mrs. C. Clarkson Hine	Jorge M. Leon		Charles Ruedebusch and Linda Flack	Mr. and Mrs. Andrew H. Shaw	Arthur Susman and Carole Stone		
Tonja Rizai Hall	Emily Heisley Stoeckel and Kevin L. Stoeckel	Anne Searle Bent	Katherine T. Donaldson and Ryan B. Whitacre	Mr. and Mrs. John L. Hines	Little Lion		Ryan Ruskin [†] and Michael Andrews	Charlene and Bob Shaw	Mr. and Mrs. Robert N. Szalay		
Mr. and Mrs. Matthew C. Harris	Mrs. Francis H. Straus II	Mr. and Mrs. Harrington Bischof	Mignon W. Dupepe and John B. Snyder	Peggy L. Hoberg	Mr. and Mrs. Jordan Lowe		Tina and Buzz Ruttenberg	Pam and Tom Sheffield / JS Charitable Trust	Carol and Jim Tichy		
Lorraine M. Hurt and George M. Ingram	Mr. and Mrs. John W. Taylor III	Mr. and Mrs. Andrew K. Block	Thomas E. Durica and Susan Jacob	Mr. and Mrs. Geoff Hoffmann	Douglas R. MacAyeal and Linda A. MacAyeal		Mr. and Mrs. Patrick G. Ryan	Toni Sandor Smith	Mr. and Mrs. Robert N. Szalay		
Charles L. Katzenmeyer [£]	Mr. and Mrs. Edgar L. Thayer	The Bloom-Kessler Family	Jon Ekdahl and Marcia Opp Ekdahl	Heidi and Richard Holm	Thomas T. Macejko, Jr. and Amanda Maw Macejko		Barbara M. Schleck and Gary M. Ropski	Elizabeth L. Snyder	Carol and Jim Tichy		
Mr. and Mrs. T. Eric Kilcollin	Jeannie and Thomas Tisbo	R. Darrell Bock and Renee Menegaz-Bock	Mr. and Mrs. Samuel H. Ellis	Mr. and Mrs. Arthur Holzheimer	Sandra and Benjamin Madey		Mr. and Mrs. Stephen Schmitt	Mr. and Mrs. Charles H. Solberg, Jr.	Daniel Tierney and Anke Faber		
Christopher W. Kim	Mr. [†] and Mrs. David M. Tolmie	Mr. and Mrs. John J. Borland, Jr.	La and Philip Engel	Cheri and Andrew Houha	Mr. and Mrs. John W. Madigan		Heather T. Sparling and Jason Bakk	The Sparacio Family	Mr. and Mrs. James A. Tuchler		
Holly L. King	Margaret Tomaszek-Witry and Lawrence Witry	Beth and Scott Brady	Mrs. Jerome L. Ettelson	George Hrycelak and Sophia Welykyj	Patricia A. Malloy		Barbara A. A. Speer	Heather T. Sparling and Jason Bakk	Ryan VanHolsbeke [†]		
Mr. and Mrs. Robert E. King	Anne Van Wart and Michael Keable	Barb and Nathan Brown	Alexis and Craig R. Eyler	Thomas E. Durica and Susan Jacob	Sandy and Jerry Manne		Barbara A. Speer	Thomas A. Stemwedel and Paula A. Borg	Mr. and Mrs. Thomas F. Veldman		
René and Bruce Lauer	Mrs. Herbert A. Vance	Michelle and David Buck	Susan and Alexander Faurot	Jon Ekdahl and Marcia Opp Ekdahl	Peter Marks and Dorothy Mackevich Marks		Thomas A. Stemwedel and Paula A. Borg				
Mr. and Mrs. Clark Lewey	Rose and Robert Wagner	Edward J. Calkins	Judith Findorff and Kristen Marren	Mr. and Mrs. Peter D. Fischer	Marie A. Marotta						
The Loewenthal Fund at The Chicago Community Foundation	Everett S. Ward [†] and Iris K. Sims	Campbell Family Foundation	Mr. and Mrs. Christopher Hurley	Mr. and Mrs. Kenneth P. Fischl	Jamie C. Marshall and Richard Sobkowiak						
Todd Marek and Vana Thayu	Stacey E. Weltmer	Joan and Tom Castino	Jill Hutchison and David Rosholt	Anthony K. Fisher and Barbra Richardson	Catherine Mayer						
Mr. [†] and Mrs. Scott P. Marks, Jr.	William J. White [†]	Margaret Edna Graham Caswell and Randy Holladay	Irish Woods Foundation	Judith A. Fitz	McKee Family Foundation						
Donna J. Matson and Robert W. Carpenter	Melanie R. Wojtulewicz and Tony Crowe	Ceres Foundation	Marian and Fruman Jacobson	Donna and Peter Freeman	Mr. and Mrs. Ronald R. McKee						
William B. McDonald and Ptah Sekhmat Osiris	Wolff Income Charitable Fund	Mr. and Mrs. John S. Chapman	Jeani and Rich Jernstedt	Mr. and Mrs. Joel M. Friedman	Carlette C. McMullan and John Gibbons, Jr.						
Kennon P. McKee, Psy.D.	Mr. and Mrs. Kenneth J. Yager	Joyce E. Chelberg	Mr. and Mrs. James M. Johnson	Nika Gloyeske	Mr. and Mrs. Charles P. McQuaid						
Erma S. Medgyesy		Betty L. Cleeland	Pamela MacVicar Johnson	Donna and Roger Godel	Elisabeth C. Meeker						
Sandra L. Mueller		Annette and Thomas Cole	Lynn and George Jones	Katherine L. Griem, MD	Withrow W. Meeker						
Mr. [†] and Mrs. Leo F. Mullin		The Comer Foundation Fund	Linda M. Jung	Sally A. Hagan	Pamela L. Miles						
Mary Jane Nordlund		James W. Compton [†]	Kathleen and Alex Kallend	Mr. and Mrs. Dean M. Harrison	Mr. and Mrs. Robert R. Moeller						
Mr. [†] and Mrs. James J. O'Connor, Sr.		Pamela Conant	Mr. and Mrs. Eric Kauffman	Malcolm H. Hast	Moller Family Foundation						
Mr. and Mrs. William J. O'Neill		Mr. and Mrs. Patrick Corrigan	Anne Kavanagh		Cynthia A. Moody						
Dr. and Mrs. William R. Parkhurst		Kevin Coughlin and Sue Burzawa	Mr. and Mrs. Eric Kennedy		Lisa and Jerry Moore						
Jo Ann and Joseph Paszczyk		Mr. and Mrs. George M. Covington	Holli and Carson Kern		Jennifer and Brad Morehead						
Mr. and Mrs. Donald W. Patterson		Bill Cox and Mary Noble	Mr. and Mrs. William J. Kirby		Mr. and Mrs. John V. Morris						
Lorraine and Norman Perman		Dr. and Mrs. Lloyd Davidson	Kathleen and Dennis Klaeser		Mr. and Mrs. Thomas M. Mulcahy						



Keynote speaker Dr. Amal Alachkar (left), neuroscientist and pharmacologist, talks about her research and experience as a refugee from Syria with moderator Angelique Powers (right), President of the Field Foundation.

Women in Science Luncheon

The Women’s Board of the Field Museum hosted Dr. Amal Alachkar, a neuroscientist and pharmacologist from Syria, on Thursday, May 2 at the 2019 Women in Science Luncheon. Dr. Alachkar spoke to 400 guests about her research and work to find innovative treatments for Parkinson’s Disease, depression, schizophrenia, and autism. Chaired by Women’s Board members Amy Scalera Findlay and Mihra Seta, the Luncheon raised more than \$330,000 in support of Museum opportunities for young women pursuing STEM careers. The Luncheon also supports an ongoing lecture and symposium series, networking events, and learning activities for more than 1,000 members of the Field’s extended Women in Science community.



(Below) Gala Chair and Women’s Board member Megan Hoffmann welcomes guests to the 2019 Gala.

Women’s Board Gala

On October 19, the Museum’s annual fundraising gala raised a record \$2.3 million in essential operating funds. The event, chaired by Women’s Board member Megan Hoffmann, honored Life Trustee Judith S. Block with the Marshall Field V Award for Distinguished Leadership. Judy’s impact on the Field Museum has spanned four decades—as the first woman to chair the Board of Trustees and as member/past-president of the Women’s Board.

The Field Museum also honored Northern Trust Corporation—represented by Field Museum Trustee and Northern Trust Chairman and CEO Michael O’Grady—with its inaugural Corporate Philanthropy Award. Established in the Field’s historic 125th anniversary year, the award recognizes a 125-year partnership between the Museum and the bank.

HONOR ROLL

2019 Contributions

\$5,000,000+

The Negaunee Foundation

\$1,000,000 to \$4,999,999

Anonymous (2)
Rita and John^T Canning
Linda and Wilbur^T Gantz
The Grainger Foundation, Inc.
Theresa and Edward Jerkey^D

\$500,000 to \$999,999

Anonymous (2)
ArcelorMittal
Bobolink Foundation
The Crown Family
Robert R. McCormick Foundation
Gordon and Betty Moore Foundation
Nancy Torbet^D
National Science Foundation

\$100,000 to \$499,999

Anonymous (2)
AbbVie
Aon
Konrad J. Banaszak
BMO Harris Bank
Carolyn S. Bucksbaum
Jacolyn and John^T Bucksbaum
Dr.^T and Mrs. Richard A. Chaifetz
Winnie and Bob^T Crawford
D & R Fund / Glasser and Rosenthal Families
Mr.^T and Mrs. Roger K. Deromedi
Efroymsen Family Fund^T
Mr.^T and Mrs. Marshall Field V
Mr.^T and Mrs. James S. Frank

Karen Z. Gray-Krehbiel^T and John H. Krehbiel, Jr.
Evelyn R. Greene^D
Hamill Family Foundation
David D. Hiller^T
Katie Hazelwood and Todd Kaplan
Institute of Museum and Library Services
Mr.^T and Mrs. Michael L. Keiser
Mr. and Mrs.^T Dennis J. Keller
Fay and Daniel Levin
Diane v. S.^T and Robert M. Levy
John D. and Catherine T. MacArthur Foundation
Magellan Corporation
Swati and Bobby^T Mehta
Elizabeth Morse Genius Charitable Trust
National Aeronautics and Space Administration
National Fish and Wildlife Foundation
Nicor Gas

Northern Trust
Mr.^T and Mrs. Michael O’Grady
George B. Rabb, PhD^D
The Regenstein Foundation
Cari and Michael J.^T Sacks
Searle Funds at The Chicago Community Trust
Mr. and Mrs.^T Michael D. Searle
Jai R. Shekhawat^T
Jeannie and Thomas Tisbo
Barbara H. West^D
Kim^D and Miles^T White
Mr.^T and Mrs. W. Rockwell Wirtz

\$50,000 to \$99,999

Anonymous (2)
Abbott

Paul M. Angell Family Foundation
Susan and Stephen Baird
The Barker Welfare Foundation
Judy and Howard^T Bernick
Mr.^T and Mrs. Norman R. Bobins / Bobins Family Fund at The Chicago Community Foundation

The Brinson Foundation
Chase Private Client
Joyce E. Chelberg
Chicago Blackhawks Hockey Team
The Crown Family
Discover
Gaylord and Dorothy Donnelley Foundation
Ernst & Young LLP
Colette Evans and John Rau^T
Exelon
Stephanie C. Harris / The Edith B. and Lee V. Jacobs Fund No. 2
Lori and Michael^T Flannery
Marshall B. Front Family Charitable Foundation / Laura De Ferrari and Marshall B. Front^T
GCM Grosvenor
Christina and Ron Gidwitz
Sue Ling Gin Charitable Foundation

Mr.^T and Mrs.^T Jack M. Greenberg
Sally Mead Hands Foundation
Mr. and Mrs.^T King W. Harris / Harris Family Foundation
Harris Family Fund of The New York Community Trust
Pamela K. Hull^T
ITW
JPMorgan Chase & Co.

Jamee Field Kane^T / The Edith B. and Lee V. Jacobs Fund No. 1
Mr.^T and Mrs. Richard L. Keyser
Holly L. King
Kathleen and Dennis Klaeser
Lilly Endowment Inc.

Mr.^T and Mrs. John W. McCarter, Jr.
Chauncey and Marion D. McCormick Family Foundation

Susan and David Milligan
National Material L.P.
National Park Service
Mr.^{TD} and Mrs. Madhavan K. Nayar
Karen A. Nordquist

Mr.^T and Mrs. John F. Podjasek III
Polk Bros. Foundation
Alicia and Peter^T Pond
Betty D. Prout^D
Jeanne M. and John W.^T Rowe
Joan and Paul Rubschlager
Charlene and Bob Shaw
Liz Stiffel
John G. Symons Trust Charities Fund

Michael F. Tang^T
Robin and Mark^T Tebbe
U.S. Bank
United Airlines
Kimbra and Mark^T Walter
Elie Weaver^T and Hilton Weinberg
Wirtz Corporation

\$25,000 to \$49,999

Anonymous (3)
Anu and Arjun^T Aggarwal
Bob Arthur^T and Susan Anderson

The Robert and Isabelle Bass Foundation, Inc.
Bears Care
Helen R. Beiser, MD^D
Amy E. Best^T
Judith S. Block^T
The Boeing Company
Dianne and Thomas Campbell
CAS Security Holdings LLC
Greg^T and Mamie Case Charitable Fund
Henry T. Chandler^D
Elizabeth F. Cheney Foundation

Citadel
ComPsych Corporation
Mark Cozzi^T and James Goeke
Mr.^T and Mrs. Kermit R. Crawford
Henry Crown and Company
Marsha Cruzan^T and Thomas McGinnis
Daphne and John Cunningham

Mr.^T and Mrs. Oscar A. David
DHR International
The Duchossois Family Foundation
The Duchossois Group, Inc.
Dr. and Mrs. Eugene F. Fama
Mr. and Mrs. W. James Farrell
Mary and Bruce Feay
Ford Motor Company Fund
Evelyn Frank^D
Julius N. Frankel Foundation
Ellis Goodman Family Foundation

Judy^T and Bill Greffin
John R. Halligan Charitable Fund
Colette and Wayne^T Hedien
The Hill Group
Susan D. Hoyne^D

Mr.^T and Mrs. Jeffrey B. Keller
Shannon Kennedy^T
The Knowles Foundation
William C. Kunkler III^T and Susan Crown
René and Bruce Lauer
Gail J. and Robert B.^T Loveman
Margaret B. MacLean^T
Mr. and Mrs. John W. Madigan
McDonald’s Corporation
Mr. and Mrs. W. James Mc Nerney, Jr.

Motorola Solutions Foundation
Motorola Solutions, Inc.
Mr.^T and Mrs. Neil S. Novich
National Geographic Society
Mr.^T and Mrs. James J. O’Connor, Jr.
Kenneth W. O’Keefe^T and Jason Eric Stephens
Ortiz Builders Inc., MBE
Joe Ortiz and Becky Dykiel
Cathy and Bill Osborn
Alice and Charles^T Palmer

Irma Parker
Pepsi Beverages Company
Prince Charitable Trusts
Quest Foundation
Cecelia and Thomas^T Ricketts
Mr. and Mrs. John W. Rutledge
Mr. and Mrs. Patrick G. Ryan
Mr. and Mrs. Richard H. Schnadig
Michael E. Severino, MD^T
Adele S. Simmons^T and John L. Simmons
Julie and Matthew K.^T Simon
Mr.^T and Mrs. Jud Snyder
Dawn L.^T and David J. Solomon
Cia and Tom^T Souleles
Mr. and Mrs. Neele E. Stearns, Jr.

Walgreens
The A. Montgomery Ward Foundation, Bank of America, N.A., Co-Trustee
David E. Willard
Melvin D. Williams^T
Winston & Strawn LLP
Mr.^T and Mrs. Patrick Wood-Prince
Jason Wortendyke^T and Ariel Knowles Wortendyke

\$10,000 to \$24,999

Anonymous (11)
Aileen S. Andrew Foundation
Aramark
Archer Daniels Midland Company
Bank of America
Lorraine and Randy Barba
Baxter International Inc.
Susan M. Benton^T
Mr. and Mrs. Harrington Bischof
Mr. and Mrs. Andrew K. Block
Bloomberg Philanthropies
Barbara^D and Roger Brown
The Buchanan Family Foundation
Rosemarie and Dean L. Buntrock
Carol and Tom Butler
Rebecca Childers Caleel
Casden Family
CIBC
The Comer Foundation Fund
Cecilia and Froilan Concepcion
Mr. and Mrs. James J. Conrad
A. G. Cox Charity Trust
Credit Suisse
The Davee Foundation
Janet W. Diederichs
Shawn M. Donnelley and Christopher M. Kelly

Janet and Craig Duchossois
Mr. and Mrs. Robert Feitler
Mr.^T and Mrs. Michael W. Ferro, Jr.
First Data
The Foland Family^T
Mr. and Mrs. Robert E. Gallagher, Jr.
Mr. and Mrs. Camillo Ghiron
Alice and Richard Godfrey
W.W. Grainger, Inc.
Grant Thornton LLP
Mary P. Hines
Hoellen Family Foundation
Marshall^D and Doris^D Holleb Family
Dr. and Mrs. Wayne J. Holman III
J. Thomas Hurvis
Edgar D. Jannotta, Sr.
Mrs. Noel Kaplan
Anna Marie and Jerry Kelly
Mr. and Mrs. Keith Kizziah / Malott Family Foundation

Geraldine C. Kolb^D
Laurie and Rich Kracum
Robert A. Kubicka, MD
Charlene Landsberg Smith^D
Jan and Richard W.^{TE} Lariviere
Lavin Family Foundation
Phillip and Edith Leonian Foundation
Michael A. Leppen \ Miriam U. Hoover Foundation
Richard M. Levin^T and Sally J. McDonald
Jennifer L. Martin
Match-E-Be-Nash-She-Wish Band of Pottawatomi Indians
McKinsey & Company
Mr. and Mrs. Andrew McNally IV

Withrow W. Meeker
Molex Incorporated
Mr.^T and Mrs. John P. Molloy
Morgan Stanley
Mr.^T and Mrs. Chris O’Herlihy
Asutosh Padhi^T and Rita Anand-Padhi

PNC
PwC
Kimberly Querrey and Louis Allen Simpson
Levy Restaurants
Helen S. Reed
Mr. and Mrs. Larry D. Richman
Mr. and Mrs. Phillip B. Rooney
Mr. and Mrs. Jeffrey S. Ross
S&C Electric Company
S&H Fund, a Donor Advised Fund of Renaissance Charitable Foundation
Mr. and Mrs. Stephen Schmitt
Marilyn L. Schweitzer and Michael A. Firman
Mrs. William L. Searle
Raymond A. Seng^D
Mr.^D and Mrs. Romolo Sidoli
Kass F. Sigal
The Siragusa Family Foundation
Harold B. Smith
Mr. and Mrs. Charles H. Solberg, Jr.
Barbara A. Speer
Margie^T and Kevin^T Stineman
Judith B. Sugarman
Captain Dave Truitt
Mr.^T and Mrs. Marcus A. von Kapff
Mr. and Mrs. John R. Walter
Wells Fargo & Company
William Blair & Company
Wintrust Financial Corp.

\$5,000 to \$9,999
Anonymous (5)
Alembo B.V.
Archaeological Institute of America
Jean R. Armour^T
Axiell Alm Canada Inc.
Verna L. Baughman, MD
Mr. and Mrs. David W. Bernauer
Rüdiger Bieler^E and Petra Sierwald^E
Mr. and Mrs. Philip D. Block IV
David Bohan and Kathryn Kemp
Helen V. Brach Foundation
Mr. and Mrs. Andrew W. Brown
Linda and Vincent Buonanno
Mr. and Mrs. Theodore R. Butz / The Butz Foundation
Cascade Foundation
Ricardo Chimal, Jr.
Loretta and Robert Cooney
Mary and Jim Costello
Mark Crane
Judy and Tapas Das Gupta
Laura and Dave Davis
Susan and Mark Dawson
Cheryl and Michael Del Campo
Mr. and Mrs. James M. Denny
Mr. and Mrs. Byram E. Dickes
Thomas R. Doler
Monica E. Donath
The Donnelley Foundation^T
Glenda W. Duncan
Ecolab Inc.
Eldred-Harland Charitable Fund at The Chicago Community Foundation
Alexis and Craig R. Eyler
Hattie A. and Marie V. Fatz Foundation
Todd Marek and Vana Thayu

Levy Restaurants
Helen S. Reed
Mr. and Mrs. Larry D. Richman
Mr. and Mrs. Phillip B. Rooney
Mr. and Mrs. Jeffrey S. Ross
S&C Electric Company
S&H Fund, a Donor Advised Fund of Renaissance Charitable Foundation
Mr. and Mrs. Stephen Schmitt
Marilyn L. Schweitzer and Michael A. Firman
Mrs. William L. Searle
Raymond A. Seng^D
Mr.^D and Mrs. Romolo Sidoli
Kass F. Sigal
The Siragusa Family Foundation
Harold B. Smith
Mr. and Mrs. Charles H. Solberg, Jr.
Barbara A. Speer
Margie^T and Kevin^T Stineman
Judith B. Sugarman
Captain Dave Truitt
Mr.^T and Mrs. Marcus A. von Kapff
Mr. and Mrs. John R. Walter
Wells Fargo & Company
William Blair & Company
Wintrust Financial Corp.

Mr. and Mrs. Alexander H. Faurot
Fellowes Brands
Ginny and Peter Foreman
Mr. and Mrs. Philip M. Friedmann
Mr.^T and Mrs.^T James J. Glasser
Julie and Greg Goff
Mr. and Mrs. James P. Gorter
Donald Grasso
Mary L. and Richard^T Gray
Jean Greene
Joyce and Timothy Greening
Patricia and William J. Hagenah
Wolff Income Charitable Fund
Mr. and Mrs. Matthew C. Harris
Dorothy Harza
Mr. and Mrs. Patrick J. Herbert III
Lynn and Philip Hummer
Lorraine M. Hurt and George M. Ingram
The Institute for Aegean Prehistory
Integrated Electric
Jeani and Rich Jernstedt
Charles L. Katzenmeyer^E
Julian Kerbis
Mr. and Mrs. T. Eric Kilcollin
Christopher W. Kim
Mr. and Mrs. Robert E. King
KPMG LLP
Mr. and Mrs. Clark Lewey
Mr. and Mrs. Robert Linn
The Loewenthal Fund at The Chicago Community Foundation
MAC Restoration Contracting, Inc.
Mr.^D and Mrs.^D Lester Mandelstein
Todd Marek and Vana Thayu

Mr.^T and Mrs. Scott P. Marks, Jr.
Donna J. Matson and Robert W. Carpenter
William B. McDonald and Ptah Sekhmat Osiris
Kennon P. McKee, PsyD
Erma S. Medgyesy
Elisabeth C. Meeker
Sandra L. Mueller
Mr. and Mrs. Thomas M. Mulcahy
Mr.^T and Mrs. Leo F. Mullin
National Marine Fisheries Service
Gary L. Neilson and Trudy A. Havens
Mary Jane Nordlund
Mr.^T and Mrs. James J. O’Connor, Sr.
Mr. and Mrs. William J. O’Neill
China I. Oughton^D
Dr. and Mrs. William R. Parkhurst
Jo Ann and Joseph Paszczyk
Patagonia
Mr. and Mrs. Donald W. Patterson
Peoples Gas
Lorraine and Norman Perman
Mr. and Mrs. Robert Raimondi
Tonja Rizai Hall
D. Roskin
S&P Global
Mr. and Mrs. Robert J. Sanborn
Cynthia Scalzo and Henry Brown
Karla Scherer
Mr. and Mrs. Gordon I. Segal / Segal Family Foundation
Charles & M.R. Shapiro Foundation, Inc.
Mr. and Mrs. Jeffrey S. Sharp
Roger D. Shaw, Jr.

Mr.^T and Mrs. Scott P. Marks, Jr.
Donna J. Matson and Robert W. Carpenter
William B. McDonald and Ptah Sekhmat Osiris
Kennon P. McKee, PsyD
Erma S. Medgyesy
Elisabeth C. Meeker
Sandra L. Mueller
Mr. and Mrs. Thomas M. Mulcahy
Mr.^T and Mrs. Leo F. Mullin
National Marine Fisheries Service
Gary L. Neilson and Trudy A. Havens
Mary Jane Nordlund
Mr.^T and Mrs. James J. O’Connor, Sr.
Mr. and Mrs. William J. O’Neill
China I. Oughton^D
Dr. and Mrs. William R. Parkhurst
Jo Ann and Joseph Paszczyk
Patagonia
Mr. and Mrs. Donald W. Patterson
Peoples Gas
Lorraine and Norman Perman
Mr. and Mrs. Robert Raimondi
Tonja Rizai Hall
D. Roskin
S&P Global
Mr. and Mrs. Robert J. Sanborn
Cynthia Scalzo and Henry Brown
Karla Scherer
Mr. and Mrs. Gordon I. Segal / Segal Family Foundation
Charles & M.R. Shapiro Foundation, Inc.
Mr. and Mrs. Jeffrey S. Sharp
Roger D. Shaw, Jr.



EVOLVE

EVOLVE 2019, the Field Associates’ annual fundraiser, was a spectacle-filled success raising \$97,000 for Museum operations—a 75% increase over last year. The growth in revenue is thanks to increased support from Trustees, new levels of sponsorship, ticket sales, and in-kind contributions. The Museum partnered with Chicago’s favorite local establishments to provide appetizers and refreshments as hundreds of young professionals enjoyed a night in the Museum’s iconic Stanley Field Hall. The evening was filled with imagery from the *Wildlife Photographer of the Year* exhibition, a silent disco, dancing, networking, and stations featuring Museum scholars and their research.

(Above) Field Associates members Tia Gluntz and Becky Adams enjoy the silent disco with Ex-Officio Trustee and Field Associates President Alin Schubert at Evolve.

William W. Shaw
Pam and Tom Sheffield / JS Charitable Trust
Bessie Shields Foundation
Richard M. Skolly and Kate A. Feinstein
The Smart Family Foundation
Kevin L. Stoeckel and Emily Heisley Stoeckel
Mrs. Francis H. Straus II
Sulzer Family Foundation
Mr. and Mrs. John W. Taylor III
Mr. and Mrs. Edgar L. Thayer
Mr.^T and Mrs. David M. Tolmie
Margaret Tomaszek-Witry and Lawrence Witry
Mr. and Mrs. James A. Tuchler
University Products
Anne Van Wart and Michael Keable
Mrs. Herbert A. Vance
Rose and Robert Wagner
Everett S. Ward^T and Iris K. Sims
Stacey E. Weltmer
William J. White^T
Melanie R. Wojtulewicz and Tony Crowe
Mr. and Mrs. Kenneth J. Yager

\$2,500 to \$4,999

Anonymous (4)
Charles Adams Nature Research Foundation
Adtalem Global Education
Mary Claire and Doug Allvine
The Allyn Foundation
American Agricultural Insurance Company
American International Group, Inc.
Birute J. Apke
Michael D. Arnold and Monica Wallace

Lindsey and Merrick Axel
Lucinda and David Baier
Mr. and Mrs. Aaron A. Barlow
Kara and Thomas Barta
Joyce and Frank Bauer
Helene Beisecker and Jean Ann White
Deborah A. Bekken^E and Richard G. Kron
Anne Searle Bent
The Bloom-Kessler Family
R. Darrell Bock and Renee Menegaz-Bock
Mr. and Mrs. John J. Borland, Jr.
Beth and Scott Brady
Barb and Nathan Brown
Michelle and David Buck
Caroline and Michael Burns
Butler Family Foundation
Edward J. Calkins
Campbell Family Foundation
Joan and Tom Castino
Margaret Edna Graham Caswell and Randy Holladay
Ceres Foundation
Mr. and Mrs. John S. Chapman
Vikram Chauhan
Emily Ciaglo
Betty L. Cleeland
Mr. and Mrs. Thomas and Annette Cole
James W. Compton^T
Pamela Conant
Mr. and Mrs. Patrick Corrigan
Kevin Coughlin and Sue Burzawa
Mr. and Mrs. George M. Covington
Bill Cox and Mary Noble
Professor^T and Lady Peter R. Crane
Dr. and Mrs. Lloyd Davidson

Rebecca Davidson
William L. Davis III
Rebecca E. Deaton
Mr. and Mrs. Robert O. Delaney, Jr.
Owen Deutsch and Rona Talcott
Mr. and Mrs. James W. DeYoung
Richard A. Domanik and Janice Y. Domanik
Katherine T. Donaldson and Ryan B. Whitacre
Mignon W. Dupepe and John B. Snyder
Thomas E. Durica and Susan Jacob
Jon Ekdahl and Marcia Opp Ekdahl
Mr. and Mrs. Samuel H. Ellis
La and Philip Engel
Mrs. Jerome L. Ettelson
Evans Food Group Ltd.
Mr. and Mrs. William F. Farley
Amy and Cameron Findlay
Judith Findorff and Kristen Marren
Mr. and Mrs. Peter D. Fischer
Mr. and Mrs. Kenneth P. Fischl
Anthony K. Fisher and Barbra Richardson
Judith A. Fitz
John Flynn and Alison L. Gold
Donna and Peter Freeman
Mr. and Mrs. Joel M. Friedman
GBIF Secretariat
Mr. and Mrs. Christopher O. Glass
Nika Gloyeske
Donna and Roger Godel
Julian Grace Foundation
Mr. and Mrs. Melvin Gray
Delta A. Greene

Katherine L. Griem, MD
Sally A. Hagan
Irving Harris Foundation
Mr. and Mrs. Dean M. Harrison
Malcolm H. Hast
Mr. and Mrs. Thomas Z. Hayward, Jr.
Mr. and Mrs. J. Duncan Healy
Dawn and Ted Helwig
Kimberlee S. Herold
Robert Hevey, Jr. and Constance M. Filling
Mr. and Mrs. C. Clarkson Hine
Mr. and Mrs. John L. Hines
Peggy L. Hoberg
Mr. and Mrs. Geoff Hoffmann
Heidi and Richard Holm
Mr. and Mrs. Arthur Holzheimer
Cheri and Andrew Houha
George Hrycelak and Sophia Welykyj
Maria R. Hrycelak, MD
Ying Hsu and Donald R. Monson
Laurie Huget and Werner Huget
Mr. and Mrs. Christopher Hurley
Jill Hutchison and David Rosholt
Mrs. Robert C. Hyndman
Insects Limited
Irish Woods Foundation
Marian and Fruman Jacobson
Mr. and Mrs. James M. Johnson
Pamela MacVicar Johnson
Lynn and George Jones
Linda M. Jung
Kathleen and Alex Kallend
Mr. and Mrs. Eric Kauffman
Anne Kavanagh
Mr. and Mrs. Eric Kennedy
Holli and Carson Kern
Mr. and Mrs. William J. Kirby

Mr. and Mrs. Adam Klauber
Becky and Lester Knight
Gail and Barry Kohl
Patricia Kosmerl
Mr. and Mrs. Robert R. Kunkler
Mary Lawlor
Wende Fox Lawson and Jim Lawson
Little Lion
Deirdre LeMire
Jorge M. Leon
Locke Lord LLP
James Louderman^E
Mr. and Mrs. Jordan Lowe
Douglas R. MacAyeal and Linda A. MacAyeal
Thomas T. Macejko, Jr. and Amanda Maw Macejko
Sandra and Benjamin Madey
Patricia A. Malloy
Sandy and Jerry Manne
Peter Marks and Dorothy Mackevich Marks
Marie A. Marotta
Jamie C. Marshall and Richard Sobkowiak
Catherine Mayer
Susan and John McBride
McKee Family Foundation
Mr. and Mrs. Ronald R. McKee
Carlette C. McMullan and John Gibbons, Jr.
Mr. and Mrs. Ward S. McNally
Mr. and Mrs. Charles P. McQuaid
Pamela L. Miles
Mr. and Mrs. Robert R. Moeller
Moller Family Foundation
Cynthia A. Moody
Lisa and Jerry Moore
Jennifer and Brad Morehead
Mr. and Mrs. John V. Morris

Alexandra C. and John D. Nichols
James H. Niehoff and Jolie R. Macier
Jennifer and Craig Niemann
Christina J. Norton and John A. Biek
Mark A. Oates
Old Republic International Corporation
Virginia A. O’Neill
Stephanie Ortel
Donna L. Owens
The Richard Laurence Parish Foundation
Shauna Peet
Mr. and Mrs. Robert P. Perkaus, Jr.
Mr. and Mrs. Craig A. Pickenpaugh
Beverly and Stephen Pinaire
Mr. and Mrs. Paul C. Poy
Irwin Press and Andra Press
Mr. and Mrs. Shelby Pruett
Jacqueline L. Quern
James A. Radtke and Susan A. Kressin
Mr. and Mrs. William Radzevich
Ginevra^E and Ben Ranney
Anita J. Rogers
Mr. and Mrs. Steven A. Rosen
Robert A. Rosholt and Sharon L. Brunelle
Susan B. Rubnitz
Charles Ruedebusch and Linda Flack
Ryan Ruskin^T and Michael Andrews
Tina and Buzz Ruttenberg
Alice and John Sabl
Sahara Enterprises, Inc.
Barbara M. Schleck and Gary M. Ropski

Karen and Frank Schneider
Barbara and Thomas Schnitzer
Suzanne and Ken Schulte
Mr. and Mrs. Richard G. Schultz
Susan and Alan Sebulsky
Monica and Stephen Sentoff
Robert M. Shafis and Carol A. Erickson
Sally Sharp
Mr. and Mrs. Andrew H. Shaw
Mr. and Mrs. Neil J. Sheehan
Shure Incorporated
Mr. and Mrs. William Sinclair
Toni Sandor Smith
Elizabeth L. Snyder
The Sparacio Family
Thomas A. Stemwedel and Paula A. Borg
The Stirling Charitable Fund / Mr. and Mrs. James P. Stirling
Mr. and Mrs. Ivan G. Strauss
Steven Strohmeier^E and Josie Brown
Mary and Harvey Struthers
Usha Subramanian^E and Deepak Raghunathan
Kathleen and Lawrence Sullivan
Arthur Susman and Carole Stone
Mr. and Mrs. Robert N. Szalay
Tawani Foundation
Helen and Richard Thomas
Carol and Jim Tichy
Daniel Tierney and Anke Faber
Mr. and Mrs. Thomas F. Veldman
Nancy L. Wald^D
Mr. and Mrs. Douglas H. Walter
Dilnaz and Qaiser Waraich
Carrie and Jay Weaver
Lynda W. Williams, PhD and Norman J. Williams

April R. Wilson
Claudia L. Winkler
Mr. and Mrs. William E. Wolf
Elizabeth Yntema and Mark Ferguson
Felix Yuansi Huang and Joshua Lau
Mr. and Mrs. Robert Zentner
\$1,000 to \$2,499
Anonymous (13)
The Achnacarry Foundation / Lenore and Douglas Cameron
Eva Adler and Lorica Adler
Anirudh Ajith
Mr. and Mrs. Richard J. Almeida
Michael and Sarah Alter
AMSTED Industries
Rodney Austin
Margaret B. and Harry Axelrod
Charitable Trust Fund
Cinda Axley
James J. Barrett
Mrs. William Kaye Beatty
Mr. and Mrs. Philip S. Beck
Mr. and Mrs. Ronald J. Benedict
Matthew Benoit and Cathleen Dohrn
Mr. and Mrs. Peter B. Bensinger
Betty Bergstrom and Gerald Talsky
Sarah Bernardi
BioShare Digitization
The Birck Family Fund
Christopher Block
Hyacinth and Le Monte G.^E Booker, Sr.
Peter Bowe and Barbara Stewart
Barbara A. Boyer
Estelle and Charles Brashears
Lori F. Breslauer^E
Noelle C. Brock

Mr. and Mrs. K. D. Brooksher
Judy and John Bross
Sophia Bross
Elizabeth K. Brown
Mr. and Mrs. Frank Bruno
Beth and Samuel Buchsbaum
Rosemarie and Dean L. Buntrock Foundation
Mr. and Mrs. Wayne Busch
Roxanne Capron
Nathaniel Purdy Clapp
Callie Anne and W.^H^T Clark
Mary Sue and William Coates
Mr. and Mrs. John T. Coletta
Mr. and Mrs. Terrence Collins
Jenny Lynd Corley
Patricia O. Cox
Mr. and Mrs. William A. Crane
Mr.^D and Mrs. John V. Crowe
Charles F. Custer
Mrs. Kenneth W. Dam
William R. Darman
Mr. and Mrs. Robert J. Darnall
Diana L. DeBoy
Richard L. Dees and Nora Flint
Nancy Dehmlow and Cameron Dunne
The DeThorne Family^E
Daniel Diermeier^T and Ariela Lazar
Naomi S. Donnelley and Joseph Butler
Helen M. Dunlap
Mr. and Mrs. Phillip L. Elbert
Mr. and Mrs. Richard Elden
Cherelynn A. Elliott
George Engeln and Denise Stewart
The Donald Ephraim Family Foundation
Fabio Fabbri

Julia B. Faust
Mr. and Mrs. Jose L. Ferrer
Mr. and Mrs. Matthew D. Anderson
Barbara V. Fisher
Mr. and Mrs. C. Luther Fors II
Adrian R. Foster
Deborah and Charles Frank
Joanne Benazzi Friedland
Sylvia E. Furner
Mr. and Mrs. Glenn L. Gabanski
Gregory J. Gajda
Shelly Geppert and Rose Latuszek
Mr. and Mrs. John E. Gepson
Gretchen Gillis
Gilt City Ltd.
Chris Godell and Curt Ballard
John D. Goerner
Mr. and Mrs. Stanford J. Goldblatt
Walter and Karla Goldschmidt Foundation
John C. Goodall, Jr.
Mr. and Mrs. Daniel R. Greenberg
Catherine A. Griffin
Anastasia Gutting
Suzanne Gylfe
Mr. and Mrs. John A. Hagenah
Graham Hamilton
Esther R. Hankin
Mattie H. Harris
The Haskins Foundation Inc.
Barbara J. Hebda
James and Katherine Hepp
Robert Hermann
Elizabeth and Joseph Hernandez
Mr. and Mrs. Robert M. Hickey
Bob and Connie Hickey
Hollinger Metal Edge

HONOR ROLL

Mr. and Mrs. Fred Holubow
Janice L. Honigberg
Mr. and Mrs. John L. Houston
Mrs. Peter H. Huizenga
Susan and Tex Hall
Elizabeth Anne Hull
Patricia J. Hurley
Mr. and Mrs. Craig Hutson
IBM
Mr. and Mrs. Jeffrey W. Jackson
Jennifer and Eric Jacobson
Mary and Michael Jawor
Judy Johanson
Kris K. Johnson
Drs. Carrie and Timothy Kamp
Kayne Anderson Capital
Advisors Foundation
Mr. and Mrs. John P. Keller
Mr. and Mrs. Dennis J. Kelly
James S. Kemper Foundation
Mr. and Mrs. John E. Kirkpatrick
Mr. and Mrs. Norman A. Koglin
Mr. and Mrs.^D Martin
Jesse Koldyke / Koldyke
Family Foundation
Mr. and Mrs. Glenn A. Kolososki
Risha Kotecha
Mark Koten
Mr. and Mrs. Lee V. Kremer
Mr. and Mrs. Alfred F. Kugel
Donna La Pietra and
William H. Kurtis^T
Debra and Michael Leahy
Anita Lees and Lisa Lees
Mr. and Mrs. Alan E. Lerner
Dr. and Mrs. Michael S. Lewis
Mr. and Mrs. Donald J. Lewis
Paul Littlejohn and
Sara George
Elyse Litwack

Mr. and Mrs. Mark
A. Livengood
Suzanne and William Logan
Michelle Lozins
Mr. and Mrs. John Luscombe
Mr. and Mrs. John D. Mabie
Victor S. Magar and
Deborah Oestreicher
Susan Manilow
Many Thanks Foundation
Michelle L. Maton and
Michael C. Schaeffer
Helen McArdle
Mr. and Mrs. James McClelland
Bess-Catherine and
James McCord
Etta and John McKenna
Jane and Bruce McLagan
Mr. and Mrs. John McLean
Mrs. Hugo J. Melvoin
Emily Marie Miller
Mr. and Mrs. Carl E. Moore, Jr.
Mary K. Moreland and
Daniel T. Jenks
Anne M. Morgan^E
Harold M. and Adeline S.
Morrison Family Foundation
Helga E. Muench
Charles F. Nadler, MD
Jossy and Ken^D Nebenzahl
Neopolitan LLC
Mr. and Mrs. Jonathan
B. Newcomb
Christopher E. Olofson
Katherine L. Olson
Robert I. Osterberg
Mr. and Mrs. Michael
S. Paleczny
Aurie A. Pennick, Esq.^T
Mr. and Mrs. Mathias Perdekamp
Performance Media/
Chicago Wedding

Bonnie S. Peters
Mark Pinsky
Judith and Charles Pitman
Larry J. Postema
Mr. and Mrs. Charles
S. Potter, Jr.
Elaine and Ronald Prebish
Claire F. Prussian
Nancy and Warren Rasmussen
Reliable Fire & Security
Richard W. Richardson
and Heather Archer
Mr. and Mrs. Bernard B. Rinella
Roberts Family Foundation
Mr. and Mrs. David E. Robinson
Mr. and Mrs. Richard
M. Rosenberg
H. Nelson Rowley III
William Rudnick and
Lisa Walker
Judith F. and Thomas
D. Rutherford
RWI Manufacturing, Inc.
John Salvino
Sargent Family Foundation
Mr. and Mrs. Jonathan Schedler
Mr. and Mrs. Michael R. Scholl
Thelma L. Schwartz
Mr. and Mrs. Stevan
F. Schweighardt
Marilyn C. and
Stephen A. Scott
Geri and Paul Seidenstricker
David and Judith L. Sensibar
Leticia Setrini-Best
and Ian P. Best
Tracey Shafroth and
Michael Elam
Mr. and Mrs. Jonathan
F. Shaver
Timothy C. Sherck
Louis and Nellie Sieg Fund

Dolores Silverman
Victoria M. Skala
Mr. and Mrs. Reuben E. Slone
Maureen Dwyer Smith and
Edward Byron Smith, Jr.
Mr. and Mrs. Roger E. Smith
Mr. and Mrs. William
D. Smithburg
Christina and Robert Smolen
Mr. and Mrs. Walter
S. Snodell III
Solot and Karp Family
Foundation
Amanda A. Sonneborn
and Peter A. Malecki
Heather T. Sparling
and Jason Bakk
The Stebbins Fund, Inc.
Jessica and Erik Steffensen
Mr. and Mrs. Brian R. Sullivan
Meredith Sullivan and
Mark Sullivan
Patricia S. Sullivan
Heather and Raj Sultanian
Lynn and Wayne Svoboda
Carol C. Swift
Mr. and Mrs. Robert J. Syrup
Mr. and Mrs. James E. Taich
Mr. and Mrs. Gregory T. Taylor
Tiny Tiger Foundation, Inc.
Dr. and Mrs. Michael M. Todd
Howard J. Trienens
Tru Vue, Inc.
Anne Camden Tucker
Mr. and Mrs. Howard A. Tyner
Mr. and Mrs. Richard Uihlein
Mr. and Mrs. Louis
J. Van Orden III
Shawn K. VanDerziel
and Jay Clarke
Ryan VanHolsbeke
Katherine M. Vennetti

Ann Wasoff
Julia C. Webb and
Laura Christman
Bartholomew Weldon
and Deborah Zroka
Julia A. Weertman
and Nic Zerebny
Jane Frances Wells and
Burton C. Ferrini
Mrs. Henry P. Wheeler
James L. Wilson and
Pamela Diane Toler
Winnetka Garden Club
Joseph Wolnski and
Jane Christino
Nancy G. Wulfers
Kenneth A. Youga
and Anita Jean
Michelle Zahler
Mr. and Mrs. Phillip C. Zarcone

\$500 to \$999
Anonymous (10)
Sherri and Hector Adame
Barbara and Steven Adelman
Shelley Torres and
William Aldeen
Robert Z. Aliber
Karl Alleman
Elizabeth Allen
Pim and Brayton Alley
David Allsop
Mr. and Mrs. Arthur
H. Anderson, Jr.
Deb and Darrell Anderson
Judith M. Anderson
Linda Anderson
AP Monarch LLC
Richard Assmus
and Leah Welty
Tony J. Augustine

Lynn Donaldson and
Cameron Avery
Mr. and Mrs. William E. Bach
Richard P. Bail and
Janice G. Bail
Mr. and Mrs. Sebastian
S. Barrack
Carlo Basile and Kim Basile
Alben F. & Clara G.
Bates Foundation
Lauren Batterham
Dr. and Mrs. Robert A. Beatty
Mr. and Mrs. Eric Beaumont
Michael Beem
Mr. and Mrs. Donald A. Belgrad
Roy T. Benson
Jack Bentley
Mr. and Mrs. Robert Berman
Sarah Bermingham
Suzanne and William Bible
Richard and Eve Biller
Aine and Anthony Bisciglia
Kristin and Jay Scott Bleecker
Mr. and Mrs. Paul A. Bodine
Clarisa Bonilla
Cynthia M. Bowns and
Loren T. Bowns
Laura and Robert
E. Boyd III, MD
William C. Brauneis
Mr. and Mrs. Robert
B. Breisblatt
Laural Briggs and Tim Scale
Mr. and Mrs. Robert
W. Brightfelt
Sara and Patrick Broaders
Lynn Bromstedt
Nancy and William Brown
Mr. and Mrs. Thomas Buck
Michelle Burke
Eileen M. Cahill and Family
Judith A. Caloud



(Left) Tribal Council Secretary Jeff Martin accepts the Parker/Gentry Award from Field Museum President and CEO Richard W. Lariviere, PhD.

Parker/Gentry Award

On May 7, 2019, the Museum recognized the significant conservation efforts of the Match-E-Be-Nash-She-Wish Band of the Potawatomi (Gun Lake Tribe) with the 24th annual Parker/Gentry Award. Drawing on expertise honed through centuries of close observation, stewardship, and science, the Gun Lake Tribe has made an extraordinary impact in safeguarding their homelands in Michigan by rehabilitating water habitats for sturgeon, restoring wild rice beds, and conserving turtle populations. In an extraordinary gesture, the tribal delegation announced at the ceremony they would gift the cash award and an additional matching gift to the Museum’s *Native North America Hall*. The Museum was honored to accept this first-of-its-kind endorsement from a Native community for this project and was inspired to continue to build strong relationships with the Gun Lake Tribe and other Great Lakes region tribes.

Kathleen E. Carbonara and
John P. VerBockel
Drew A. Carhart
Mr. and Mrs. Walter R. Carlson
Tammy and Joseph Carmody
Jason Carr
Mr. and Mrs. Robert E. Carroll
Mr. and Mrs. Frantz R. Cartright
Mr. and Mrs. Candelario M. Celio
Michele Chaffee and
Adam Nordin
Mr. and Mrs. John A. Daniels
Mr. and Mrs. Bruce Davidson
Mr. and Mrs. Allen R. Davies
Susanne and Kent Davis
Brian J. Dees
Carla M. Dehmlow
Uta DeTappan-Staley
Mary J. DeThorne
William DeWoskin and
Wendy S. Gross
Amy T. Dickinson and
Jim Futransky

Caroline Cronin
The Honorable Barbara
Flynn Currie
Robin Currie and
Robert Beeching
Timothy Currie
Mary Cygan and Francis Bruey
Mr. and Mrs. Thomas
J. Dammrich II
Mr. and Mrs. Alfred
E. D’Ancona II
Mr. and Mrs. John A. Daniels
Mr. and Mrs. Bruce Davidson
Mr. and Mrs. Allen R. Davies
Susanne and Kent Davis
Brian J. Dees
Carla M. Dehmlow
Uta DeTappan-Staley
Mary J. DeThorne
William DeWoskin and
Wendy S. Gross
Amy T. Dickinson and
Jim Futransky

Cindee and William Dietz, Jr.
Dr. and Mrs. John R. Dimar II
Mr. and Mrs. James S. DiMatteo
Mr. and Mrs. Paul F. Dittmann
Mr. and Mrs. John M. Dixon
Julie A. Dodds and
William G. Humphrey
Mr. and Mrs. David W. Dodson
Leonard and Patricia
Dominguez
Carolyn K. Donaldson and
James S. Donaldson
Andrea M. Dudek
Mr. and Mrs. Timothy K. Earle
Mr. and Mrs. Steven J. Edgar
Mark C. Egan and
Katherine Z. Egan
Victoria and Thomas Eley III
Mr. and Mrs. Dan Engel
Gary L. Eppling
Erika E. Erich
Patricia M. Erickson

Josephine and Amado
Gabriel Esteban
Expedia Inc.
Diana H. Fagan
Andrew Farbman
Tiffany Farriss and
George DeMet
Fred C. Fettinger
Mr. and Mrs. Stephen Fettinger
Mr. and Mrs. Sanford Finkel
Lewis Flint
Kyle Fonjemie
Elizabeth Foster
Mr. and Mrs. Earl J. Frederick
Jerry Freedman and
Elizabeth Sacks
Mr. and Mrs. William J. Friend
Anne Murphy and J.
Patrick Gallagher
Mr. and Mrs. Roger Gansauer
Melissa Genova Hill
and Joel Hill

Pamela Geyer and
John Mehegan
Deborah and Sam Giampapa
Christopher Giorno
Judy Girard
Paula A. Golden
Mr. and Mrs. David B. Golder
Joan Goldstein
Mr. and Mrs. Edward Gong
Katherine Gory
Michelle Grant Ervin, MD
and Christine Ervin, MD
Linda and Jeffrey Graubart
Maureen Graves and
Kenneth Pomeranz
Mr. and Mrs. David Greenspahn
Mark Greer
Ann and Alan Greljak
Eleni and Stephen Griesemer
Kristie Grzywinski
Dr. and Mrs. Christopher
Hagenah

William M. Hales Foundation
Dr. and Mrs. George
S. Hallenbeck
Mr. and Mrs. Thomas
Hammerman
Mr. and Mrs. M. Hill
Hammock, Jr.
Patricia A. Harper
Katherine P. Harris^D
Barbara and John Hartnett
Valerie and Edward Hatcher
Mr. and Mrs. David C. Hawley
Joanne E. Heal
Joyce E. Heidemann
Mary Ellen Hennessy
Mr. and Mrs. Scott
E. Hertenstein
Mr. and Mrs. John W. Higgins
Melissa Hilton and
Jonathan Perman
Mrs. Edward M. Hines
Joshua W. Hodges
Elizabeth Holden



A New Look for the Crown Family PlayLab

In the summer of 2019, the Museum unveiled new features to a popular activity space that reinforced its accessibility efforts. The *Crown Family PlayLab* is also now open longer hours, allowing young visitors and their families more opportunities for learning experiences. Serving more than 91,000 guests each year, the 7,200 square-foot facility draws resources from the Museum’s collections to give children a play-focused introduction to nature and culture. The renovations updated old stations and created new experiences for discovery, like harvesting corn in a 13th-century Native American pueblo, tinkering in the new “Discovery Play Studio,” and searching for fossils in the “Dino Dig.”

The renovations to the *Crown Family PlayLab* were made possible by the generous support of the Crown Family, who have been supporting education and discovery at the Field Museum for more than 50 years.

(Above) Children explore the insect sorting station in the *Crown Family PlayLab*.

Craig J. Holderness	Mr. and Mrs. Melvin J. Koenigs	Judith L. Macior
Glenn Hopkins	Mr. and Mrs. Steve Kolodziej	Mr. and Mrs. Bernard A. Mack, Jr.
Mr. and Mrs. William S. Hoppe	Stanley L. Korwin and Nancy J. Hall	Carol A. Macola and Nicholas C. Macola
Mr. and Mrs. David B. Horn	Mr. and Mrs. Jeffrey M. Krasner	Mr. and Mrs. Michael S. Magnuson
Rose Houston Charitable Foundation	Ruta and Mitchell Krawczyk	Marvin Makinen
Mary Howe	Jennifer M. Krejci	Charles D. Mann
CJ Hughes	Mr. and Mrs. James R. Krick	Nina Mann
David L. Hulse	Juliann Krupa	Charlene Marcus
Rex M. Hunt	Gaurav Kumar and Sneha Thakur	Mr. and Mrs. William Marcyniuk
Michael Hyman	C. Thomas Kunz and Rosemarie Sweeney	Adele Martel
Steven M. Isaac and Judy L. Olds	Martha and Emerson Lacey	Mr. and Mrs. Christopher Martinez
Kristen and Josh Jacobs	Paige LaCour	Annette and John Martini
Carl Jenkins and Carole Wood	Bruce Lander	Carmen Maso
Mr. and Mrs. Harold C. Jenkins, Jr.	Mr. and Mrs. Dirk B. Landis	Jayme R. Matchinski
Renee and George Johnson	Mr. and Mrs. Kevin R. Lawler	Mr. and Mrs. Charles R. Matthews
Mr. and Mrs. Jerald L. Johnson	Alexander Layng and Kayla Viets	Emily and Samir Mayekar
Mr. and Mrs. W. Bruce Johnson	Winfred M. Leaf	Heidi and Gregory Mayer
Maryl R. Johnson	Leslie A. Lee	Meghan E. McCloud
Mr. and Mrs. Brian Jones	Glenn Lefkovitz	Joan H. McConnell
JPMorgan Chase Foundation	Mr. and Mrs. Sigmund Lefkovitz	James McCormack and Evelyn Zatkoff
Timothy Kaczocha and Kim Holmes	Sandy and David Lentz	Mary and Peter McGrail
Kathleen G. Kallan	Mr. and Mrs. Robert E. Lindgren	Clyde McGregor
Mary Kay Karzas and Warren K. Reiss	Jessica and Erik Lindholm	Mr. and Mrs. Frederick McKibbin
Mr. and Mrs. John S. Kasang	Charles N. Lindsey and Zikri Yusof	Simone McNeil
Mr. and Mrs. William O. Kasten	Mr. and Mrs. Bert H. Lindstrom	Therese and Phil Meers
Marisa and Tom Kay	Kristin Lingren	Joyce Meggett
Mr. and Mrs. Arthur Kaz	Josephine and Daniel Lisowski	Steven A. Melnyk, MD
Mr. and Mrs. Kenneth Keller	Jonathan Littman	Ken Metcalfe
Jamie M. Kelly [†]	Thomas E. Lofgren and Sarah Anne Lofgren	Meyers Charitable Family Fund
Katharine J. Kelly	Brian and Karen Lohrbach	Carol and Jan Miecznikowski
Shyam Khatau and Kavita Chandra	Sherry and Melvin Lopata	Mr. and Mrs. Michael E. Mikolajczyk
Krystyna D. Kiel	Barbara Mankus Louthan	Mikolrac, Inc
Patricia and Robert Kilinskis	Scott Lowe and Mary Martin-Lowe	Jaclyn C. Miller
Cassie Kim	Ilene and Lawrence Lubell	Leslie Miller
Lori Kleiman		Dr. and Mrs. Robert P. Miller
Caitlin Knapp		

Miriam A. Mobley Smith	Anthony Pashos and Michelle Pashos	Mary Robinson
Mr. and Mrs. Thomas M. Monahan	Mr. and Mrs. Homi B. Patel	Mr. and Mrs. Donald E. Rocap
Martha Montes	Scott R. Pattullo and Jenny A. Johnson	Jeanette Rodriguez [‡]
Cris Montoya	Deirdre and Chris Pawell	Marilyn Rohn
Thomas H. Moog	Mr. and Mrs. William B. Pearce	Mr. and Mrs. Harry B. Rosenberg
Marilyn S. and David C. Moore	Frederic C. Pearson	Rosenson Foundation
Joyce and Rick Morimoto	Robert Peretti and Quaylin Peretti	Sheldon B. Rubin
Naomi Streeter Morris	Sheldon James Perlow and Sandra J. Allen	Keith Ruskin and Anna Clebone
Vijai K. Moses and Sunshine Mitchel	James W. Peters	Janice Rzycki
The Barry Friedberg and Charlotte Moss Family Foundation	Mr. and Mrs. Thomas D. Philipsborn	Vicky Sanchez [‡] , Juan Perez and Family
Cheryl E. Mounts and Carla Williams	Mr. and Mrs. Burt Pickard-Richardson	Norman L. Sandfield
Mr. and Mrs. Kurt M. Mueller	Mr. and Mrs. Louis R. Pignotti, Sr.	Julie and John Schaff
Christine Mulshine	John Pincenti	Amy and Lori Schalk
Mr. and Mrs. James G. Murphy	Martha and Don Pollak	Dr. and Mrs. Morton O. Schapiro
Janet Murphy	Jean and Joe Ponsetto	Judith and David Schiffman
Mr. and Mrs. James Murray	Mr. and Mrs. Michael Prapuolenis	Frank Schmitz
Mr. and Mrs. Trace Murray		Richard Schreiner
Carolyn and Raghavan Narasimhan		Terri and Paul Schroeder
Mr. and Mrs. Joseph Navarre		Alin [†] and Luke Schubert
Mrs. Earl L. Neal		Todd Schuett
Mr. and Mrs. Neil C. Nelson		Ann and Thomas Schultz
Gerald Newman		Dr. and Mrs. Peter F. Schultz
Marjorie and Christopher Newman		Olivia J. Scully
Mr. and Mrs. Ray E. Newton		Mr. and Mrs. Richard J. L. Senior
Lora Nickels and Thomas Tague		Amy Sexton
F. Oliver Nicklin, Jr.		Glenn Curtiss and Margaret J. Shaffer
Mary C. Niehaus and Sanjeev Pandey		Irum and Nasir Shahab
Thao Nou Kue		Matthew Shearer
Patricia and John Obrien		Mr. and Mrs. Peter A. Shearn
W. Raykovich		Kate M. Sheehy
Mrs. Clyde W. Reighard		Vivian Sheffield
Janie P. Rempel		Mr. and Mrs. Matthew Sheldon
Michael Reynolds and Stefano Redaelli		Jennifer L. Sherman [†]
		Amy and Mikkel Shield
		James V. Shipp and Nancy Marie Casper

[†]Trustee [‡]Deceased [‡]Employee

Bette H. Sikes and Joan Pederson	Mr. and Mrs. Ben Tombaugh	\$250 to \$499
Mr. and Mrs. Michael Simpson	Dana Shepard Treister and Dr. Michael Roy Treister	Anonymous (31)
Mr. and Mrs. John R. Siragusa	Sally L. TreKell	Charlotte D. Abarbanell
Maureen M. Slavin	Mr. and Mrs. John E. Tulley	Gabriel Acinapura and Elizabeth Dyer
Michele J. Smalley and Angela Caggiano	Peter M. Vale	Mr. and Mrs. Mark Ackerman
Mary and James Smith	Dr. and Mrs. Peter O. Vandervoort	Roger S. Adamek
Mr. and Mrs. Randy Smith	Leslie and John Wainwright	Cyrus H. Adams
Mr. and Mrs. Stephen D. Smith	Belle Waldfogel and Georgean Goldenberg	Rebecca Adams
Geraldine Smrcina	Marge Walls and Cassandra Sawyers	Tony Adams
Ann and John Snyder	Carol Watkins	Mr. and Mrs. William T. Adkerson
Susan and Michael Soble	Leonard L. Weber	Susan S. Adler
Keith Solomon and Elana Beckerman	Mr. and Mrs. Andrew J. Weddig	Julieta Aguilera-Rodriguez and Andrew Johnson
Mr. and Mrs. Jeffrey Sommer	William Weeks	Mrs. John J. Ahearne
Mr. and Mrs. Scott E. Sommer	Mary Weisman and James Weisman	Mr. and Mrs. Gary D. Ahlquist
Kathy and Ron Sonenthal	Sheila and Brian Whalen	Mr. and Mrs. Erik Aivazian
Michelle Sotak	Maria Whelan	Janet M. Alberts
Meaghan Sparacio	Carolyn M. White	Mr. and Mrs. Mackenzie Allen
Laura Speck and Kimberley Speck	Gregory White	Mr. and Mrs. Roger Alva
Cynthia and Leon Stecher	Karen White	Maria Alvarez and Gloria Alvarez
Ann Marie Stephenson	Willard E. White, PhD	Rene Luis Alvarez
Pamela and James Stola	Bennie E. Whiten, Jr. and Susan E. Sporte	AmazonSmile
James H. Stone	Raymon F. Whitney	Mr. and Mrs. John R. Anderluh
Gary L. Strawn	Monica Wilkins	Bonnie J. Andersen
Dheeraj Sultanian	David Williams	Brigitte Anderson
Louis B. Susman	Mr. and Mrs. Gary Wilson	Mr. and Mrs. Craig A. Anderson
Linda J. Swanson	Kathleen M. Wilson	Gregory M. Anderson
Stefan Szczerba	Kelvin Wing	Ophelia and Haroon Ansari
Pamela Szokol	Carl Wolf and Jennie Sochon	Alona W. Anspach
Donald Tanis and Kristine M. Brandel	Michael Wright	Ruth Archer and Jim Helke
Alison L. Taylor	Diane Yarborough	Mr. and Mrs. Joshua Arlow
Mr. and Mrs. J. Hall Taylor II	Mr. and Mrs. Hugh Zentmyer	Mr. and Mrs. Matthew Arntzen
Mitch Theys	Mr. and Mrs. William B. Zigterman	Mr. and Mrs. Fernando Arriola
Peter Tigie		Ann G. Ash
Beverly J. Timm		
Virginia Tol		
Janine Tollestrup		

HONOR ROLL

Jessica Ashley and Katherine Emfinger	Jennifer and Gerald Bekkerman	Mr. and Mrs. Erwin F. Bogs	Mr. and Mrs. Jackson Brunsting	Susan and Tom Chemler	Michael Connolly	Carol and Pierre De Smul	Mr. and Mrs. Harvey Dulin	Harry R. Fair III and Carolyn E. Jordan	Mr. and Mrs. Clifford Freiberger	Geoff Goldberg and Lynne Remington	Kathleen and Dean Haas
Mr. and Mrs. Brett A. August	Laura Patricio Bellizzi and Timothy Patricio	Therese M. Bogs and W. Haser	Mr. and Mrs. Archibald T. Bryant	Mr. and Mrs. Benjamin D. Chereskin	Mark D. Contratto	Bruce Dean	Stephen P. Durchslag	Nathan Fandrich and Amanda Vaughan	Lawrence Friedman and Susan Snodgrass	Mr. and Mrs. Perry Goldberg	Robert A. Habermann
Kaye B. Aurigemma	Belmar Realty Corporation	Ava and Thomas Boltik	Mr. and Mrs. Joshua T. Buchman	Joan S. Cherry and John R. Cara	Mr. and Mrs. E. David Coolidge III	Garrett and Terry Dee	Mrs. Benjamin C. Duster	Mr. and Mrs. James Fanuzzi	Susan H. Friedman and Neil R. Friedman	Dr. and Mrs. Robert D. Goldman	Maggie and John Hach
Mary and Derek Baars	Belrose Realty Corporation	Alexandria D. Bond	Susan P. and Stephen J. Buck	Betty Chinn and Johnny Chinn	Mr. and Mrs. Gordon Coppoc	Judith A. DeLeon	Deborah and Christopher Dwyer	Carl B. Fausey	David H. Fry and Whitney B. Morris	Joseph R. Hageman	Mirja and Ted Haffner
James Bader	Belshire Realty Corporation	Paul D. Bond	Ann M. Buckley	Paul Chismudy	Wyatt Cornett and Mark Cornett	Mr. and Mrs. Charles Dennehy, Jr.	Eleanore Dykes	Julie A. Federico and Alton Jay Mitchell	Mr. and Mrs. John Gage	James C. Hagen and Colleen Hagen	James R. Hageman
Mr. and Mrs. John T. Baldwin	Belterra Realty Corporation	Marcello L. Bondurant	Thomas M. Buess	Mr. and Mrs. James N. Chodora	Mathew A. Cotton	Mr. and Mrs. Charles Dennehy, Jr.	Paul W. Earle and Ellen Rudnick	Donald R. Ferguson	Dr. and Mrs. Robert M. Galatzer-Levy	Mr. and Mrs. Mervin D. Hagen	Joseph R. Hageman
Alina and David Balko	Jenna Beltrano	Mr. and Mrs. David Bonenfant	Margot Bunn	Mr. and Mrs. John A. Chojnicki	Margaret and Mark Coutre	James Derr	Glenna R. Eaves and Christopher J. Boebel	Dr. and Mrs. Balbino B. Fernandez	Mr. and Mrs. Anand Gajula	Tara Hale	James C. Hagen and Colleen Hagen
Mary and Mike Baniak	E. Benefiel	Mr. and Mrs. Charles S. Boone	Mr. and Mrs. Werner Buol	Emily J. B. Christian	Patricia R. Cowhey	Mr. and Mrs. Perry D. Di Girolamo	Andrew and Kathleen Ebbott	Jessica Fernandez and Rene Cepeda	Dr. and Mrs. Robert M. Galatzer-Levy	Holley Hall	James C. Hagen and Colleen Hagen
Marcia Banks	Arlene and Wayne Bennett	Mr. and Mrs. Pravin Borkar	Mr. and Mrs. Paul Butera	Michelle Christiansen	Cynthia D. Cox and Robert Cox	Tracey Dibble	Benjamin Ebert	Tammy Lynn Festerling	Mr. and Mrs. Chris Gallmeyer	Bruce J. Hamburger	James C. Hagen and Colleen Hagen
Katherine M. Barnash	Roger G. Bensinger	Rahul Bose and Shelly Sinkler	Peter Byskosh	Michelle Clairmont and Shane Wilson	Rhonda Cox	Mr. and Mrs. Blair C. Dickinson	Diane S. Edlefson and Phil Harler	Neil Gandhi	Robert Gourley	Mr. and Mrs. Garret Hamby	James C. Hagen and Colleen Hagen
Allison M. Barnes	Ellen and George Benson	Mena and David Boulanger	Victoria and Bruno Caccamo	Mr. and Mrs. Randall Clark	Mr. and Mrs. Stephen E. Cox	Lisa Dietlin	Anne E. Egger	Elizabeth Garcia and Rosa Garcia	Terry Grace and Judith Gaietto-Grace	Mr. and Mrs. Joseph P. Hamilton	James C. Hagen and Colleen Hagen
Frances Barrett	Dr. and Mrs. Michael Bercek	Dr. and Mrs. Aldridge K. Bousfield	Frances Cahill and Cynthia Cahill	Dr. and Mrs. Robert D. Clark	Mr. and Mrs. Thomas W. Coyle	Mr. and Mrs. William Differding	Doug Einstein and Brienne Einstein	Charles Gardner	Sharon Graham and Terry W. McGuire	Nancy Hammer and Kenneth Molli	James C. Hagen and Colleen Hagen
Susan and Robert Barsy	Angela and Alan Bergeson	Mr. ^D and Mrs. Willard L. Boyd	Nicole and David Calendo	Louise and Steven Clark	Samuel Crider	Patricia Ann Dihel and Glen Wilson	The Robert G. Eiserman Family	Mrs. John S. Garvin	Karen L. Granda and John S. Mrowiec	Michael Hammerman	James C. Hagen and Colleen Hagen
Chris Basoukeas	Lauren Bernier	William S. Boyd	Alessandra and Gianluca Camplone	Andrew Clarke and LaDoris Duncan	Mr. and Mrs. Paul Crnkovich	Mr. and Mrs. Scott Dillingham	J. Thomas Eller	Annie Gazda	Lance Grande, PhD ^E	Mr. and Mrs. Michael S. Hammond	James C. Hagen and Colleen Hagen
Linnea M. Bass	Mr. and Mrs. Robert Bernot	Dr. and Mrs. Bruce H. Boyer	Cindy and George Cancel	Benjamin A. Coats	Susan M. Crowell and Kathleen Cooke	Kathryn Dillon	Josephine F. Elting	Aimee M. Genova	David B. Grant	Larry L. Hanes	James C. Hagen and Colleen Hagen
Gail M. Battistoni and Lisa Javadi	Marjorie and Miles Betley	Mr. and Mrs. Dennis E. Bozych	Mr. and Mrs. Dominic Candeloro	Shelby Cobb	Minerva Cruz	William D. Dini	Mr. and Mrs. Paul M. Embree	Julie L. Gentes	Mr. and Mrs. William Georgis	Robert Hanlon and Barbara MacDowall	James C. Hagen and Colleen Hagen
Douglas D. Baum and Lynne M. Wait	Satinder and Ranjit Bhatia	Leia and Andrew Bradley	Mr. and Mrs. Michael S. Canmann	Bridget B. Coffing	Marie Cuevas and Rachel Mayer	Lynne DiVenere	William Emory	Mr. and Mrs. William Georgis	Mr. and Mrs. John Geweke	Robert Hanlon and Barbara MacDowall	James C. Hagen and Colleen Hagen
Jeanifer Baxter	Lois J. Bider	Richard T. Brannegan	Ginny and Roger Carlson	Mr. and Mrs. Martin J. Cohen	Ann M. Cuniff	Joshua Dlouhy	Mary Ellen and Tomy Endo	Mr. and Mrs. John Geweke	Andrew and Catherine Gibbs	Robert Hanlon and Barbara MacDowall	James C. Hagen and Colleen Hagen
Mr. and Mrs. Kenneth J. Bazarnik	Leigh and Henry Bienen	Julie and Tim+ Bratley	Lindsay W. Carlton	Mr. and Mrs. Michael P. Cole	Katherine G. Curtis	Mr. and Mrs. Robert S. Dobis	Mr. and Mrs. Wayne Eng	Mr. and Mrs. Peter L. Flemister	Sallie and George Gill	Robert Hanlon and Barbara MacDowall	James C. Hagen and Colleen Hagen
Maureen Beaumont and Rich Storto	Nancy and Christian Bigelow	BRE NorthAmerica Industrial Fund	Mr. and Mrs. Joseph M. Carroll	Andrea and James Collingwood	Elizabeth A. Curylo	Marisa Doherty	Michelle and Carl England	Andrew and Catherine Gibbs	Pat Gill and Richard Wheeler	Robert Hanlon and Barbara MacDowall	James C. Hagen and Colleen Hagen
James Bebley and Tracey Ladner	Mr. and Mrs. John Bigwood	Linda and Michael Joseph Bresolin	Mr. and Mrs. Steven C. Carter	Dr. and Mrs. Roosevelt D. Collins	John E. Cwenkala and Lorraine Brochu	Brian K. Dominick and Kristin Lenda	Douglas Ennis and Sandra Ringelstetter-Ennis	Gibbs	Terry S. Gillespie	Robert Hanlon and Barbara MacDowall	James C. Hagen and Colleen Hagen
William T. Beck and Doreine Carson	Polly Bingham-Kawalek	Andrew Brickman	Sidney Carver and Patrick Roberts	Charles E. Collopy, Sr.	Vickie L. Cyr	Mr. and Mrs. Joseph E. Doninger	Karen and Charles Ernst	Sallie and George Gill	Peter Ginn	Robert Hanlon and Barbara MacDowall	James C. Hagen and Colleen Hagen
Michael J. Becker	Ellen and David Bishop	Marlene and David Bright	Jerry Cattell	Joan M. Colmar	Mr. and Mrs. Kenneth J. Cyrwus	Mr. and Mrs. Richard Doonan	Mr. and Mrs. Ronald L. Eshleman	Pat Gill and Richard Wheeler	Sherri J. Givens	Robert Hanlon and Barbara MacDowall	James C. Hagen and Colleen Hagen
Dr. and Mrs. John H. Beckerman III	Michael Bishop and Vonora Bishop	Charles T. Brockmann	Mia Celano and Skip Dunn	Susan Combs	Ivo Daalder and Elisa Harris	Morgan Drake	Denise Evans and Allie Bauer	Terry S. Gillespie	James Glazier	Robert Hanlon and Barbara MacDowall	James C. Hagen and Colleen Hagen
Reverend and Mrs. William C. Beckmann	Mr. and Mrs. Richard B. Black	Barbara Brooks	Susan Chamberlin	Mr. and Mrs. Peter Commons	Christopher C. Dalton	Joanne R. Driscoll	Mr. and Mrs. John B. Evans	Mr. and Mrs. Peter L. Flemister	Mr. and Mrs. Thomas F. Glennon	Robert Hanlon and Barbara MacDowall	James C. Hagen and Colleen Hagen
Mr. and Mrs. William Bedford	Mr. and Mrs. Todd Blake	Kevin Brower	Tammy and Brian Chapas	Thomas P. Conde	James J. Dalton	David Drummond	Mr. and Mrs. David P. Facklam	Mr. and Mrs. John B. Evans	Paula Glitman and Doug Stone	Robert Hanlon and Barbara MacDowall	James C. Hagen and Colleen Hagen
Mr. and Mrs. Jeffrey Beech	John M. Blinke	Adam Brown	Kathleen Chapas	Mr. and Mrs. Matthew Connelly	Michele Daniel	James J. Dalton	Mr. and Mrs. Thomas E. Fahrenbach	Mr. and Mrs. John B. Evans	Andy Gloor and Mara Gloor	Robert Hanlon and Barbara MacDowall	James C. Hagen and Colleen Hagen
Mr. and Mrs. Richard Beem	Shelley Bloch	Bo Brown and Bob Faull	Mr. and Mrs. Danny Chapman	Gladys E. Connolly	Jackie and Donald R. Dann	David Drummond	Jeffrey Fahs and Xiomycell Rodriguez-Fahs	Mr. and Mrs. John B. Evans	Mr. and Mrs. William H. Gofen	Robert Hanlon and Barbara MacDowall	James C. Hagen and Colleen Hagen
Mr. and Mrs. Thomas M. Begel	Jan Blok and Laura Melcher	Mrs. Cameron Brown	Tina Asmuth Chatalas		Mr. and Mrs. Richard W. Daspit, Jr.	Mr. and Mrs. Joseph H. Drummond	Susan and Paul Freehling	Mr. and Mrs. John B. Evans	Bruce J. Goldberg	Robert Hanlon and Barbara MacDowall	James C. Hagen and Colleen Hagen
	Mr. and Mrs. James P. Bloom	Elizabeth and Ryan Brown			Mr. and Mrs. Dennis De Bruler	Patricia J. Dryer		Mr. and Mrs. John B. Evans		Robert Hanlon and Barbara MacDowall	James C. Hagen and Colleen Hagen
	Mr. and Mrs. Irwin A. Blumensaadt, Jr.	Rachel Brozinick				Dr. and Mrs. Anthony B. D'Souza		Mr. and Mrs. John B. Evans		Robert Hanlon and Barbara MacDowall	James C. Hagen and Colleen Hagen

HONOR ROLL

Mr. and Mrs. Jason Heinrich	Laura and Dean Honda	Catherine A. Jaselskis and Gary G. Alberts	Stephen Kearney	Nicole and Jarrod Knight	Richard Landgraff	Sarah and Mark Long	Merrill Manthey and Karen Manthey	Bonnie and Paul McGrath	Rebecca and Nemiah Mitchell III	Karla Nacion	Mike Oren
Carolyn M. Heisley	Honeywell International		Denise A. Kelley	Robert P. Knight	Monica Langer	John Love and Becky Hampton	Karen Manthey	Mr. and Mrs. Luke McGuinness	Mr. and Mrs. Thomas Mitchell	Dr. and Mrs. Jonathon H. Nadler	Mr. and Mrs. Baltimore F. Ortega
Karen and Frederick Henderson	Mr. and Mrs. Joel D. Honigberg	Mr. and Mrs. Larry Jaskunas	Samantha and Brian Kelly	Dayana and Joshua Knott	Mr. and Mrs. Daniel Langley	Mr. and Mrs. Ralph Love	Sylvia and Lawrence Margolies	Amy and Myles McGuire	Rebecca H. Mo	Mr. and Mrs. Ron B. Nahser	Alejandro Ortiz
Mr. and Mrs. John Henderson	Jaap Hoogstraten ^E	Jennifer and William Jedlink	Mr. and Mrs. William H. Kelly, Jr.	Timothy B. Knuth and Elizabeth Tate	Sherry Laniosz	Jacquelyn Lubahn	Cynthia Mark-Hummel and John Hummel	Mr. and Mrs. G. Thomas McKane	Michael E. Moats and Kathy Moats	Piers Nash and Elke Aippersbach	Mary O'Shea
Mr. and Mrs. Frank X. Henke III	Thomas A. Hootman and Pamela J. Sisler	Carl W. Johnson and Laura M. Bloom-Johnson	Gaye Lovett Kelsey	Sibyl Kobza, Lottie Kobza ^D and Laura L Kobza	Susan Lannin and Albert F. Ettinger	Gerald Lucio	Mr. and Mrs. David Markovitz	Mr. and Mrs. ^D Andrew J. McKenna, Sr.	Farooq Mohammed and Iffath Farooq	Kenneth Nassau	Mary and Dennis Osimitz
Kimberly and Ryan Henke	Mr. and Mrs. Thomas J. Hope	Meagan Johnson and William Cotton	Barbara Kenar-Schilling	Mr. and Mrs. Paul N. Koch	Barbara and Keegan Lannon	Robert J. Lueders	Christine Marler	Leslie Gantz McLamore and Scott McLamore	Mondelez International Foundation	Mr. and Mrs. Juan C. Navarro	Mr. and Mrs. Lawrence A. Osterberg
David E. Henkle	Mr. and Mrs. Thomas Hopkins	Joyce and Richard Johnson	Lee Kendall and Gregory Horvath	Ray H. Kocher	Christine J. Laperuto and William J. Roznowski	Dr. Spomenka M. Luedi and Mr. Hans Luedi	Mr. and Mrs. Felipe Martinez	Donald F. McLellan and Martina M. Keller	Laura and Matthew Montange	Marquee and Jay Neander	Mr. and Mrs. James J. O'Sullivan, Jr.
Karen J. Hennessy	Mr. and Mrs. David Hubbard	Mr. and Mrs. Roderic Johnson	Mr. and Mrs. Terrence Kennedy	Stephanie Kochs	Mr. and Mrs. Stuart Lawry	Thorsten H. Lumbsch, PhD ^E and Phillip Ramon	Susan and Marco L. Martinez	Todd McWethy and Krista Loomis	Mr. and Mrs. Robert J. Nelson	Douglas Nebel	Christine Ott Rahill
Susanne Henning and Robert Henning	Lucy Hubrich	Steven E. Johnson	Mr. and Mrs. Thomas J. Kenney	Mr. and Mrs. Shohei Koide	Mr. and Mrs. John E. Koliopoulos	Pamela A. Lunsmann and Kelly Englum	Samuel J. Maselli	Terry J. Medhurst	Robert E. Nerius and Mary Mc Naughton	Mr. and Mrs. Robert J. Nelson	Barbara E. Otte and Bruce C. Shelley
Hana T. Henry	Rachel and Brian Hudson	Timothy Johnson and Frieden Johnson	Mr. and Mrs. Harrison Kennicott	Mr. and Mrs. Ernest J. Konker	Mr. and Mrs. Joseph A. Kosinski	John R. Lurain and Nell S. Lurain	Ryan Mason	Mr. and Mrs. John Massey	Robert C. Newman	Alfred F. Newton, Jr.	David Otto and Marianne Wojak
Mr. and Mrs. Paul M. Herkes	Mr. and Mrs. James W. Hudzik	Lin Johnston	Susan B. Kern and Alex Yamron	Mr. and Mrs. Joseph A. Krizelman	Holly and Kelly Kost	Alyssa and Yaniv Lusky	Mr. and Mrs. James R. Mather	Mr. and Mrs. John Meehan	Gina M. Nicholas	Mr. and Mrs. Charles W. Paape	Mr. and Mrs. Charles W. Paape
Debbie Hester	Mr. and Mrs. Phillip D. Hulben	Mr. and Mrs. Douglas L. Jones	Kate T. Kestnbaum	Mr. and Mrs. Stuart Kriegermeier	Omar S. Khalil	Mr. and Mrs. Gregory Lynch	Mrs. Donald W. Mather	John M. Meeks	Eleanor A. Nicholson	Janek Padar and Kalmer Kuusik	Janek Padar and Kalmer Kuusik
Mr. and Mrs. Robert Hetzel	Diane S. Humphrey	Demetria Nanos Jones and Kenneth Jones	Obaid Khurram and Elizabeth Olive	Mr. and Mrs. Jeffrey A. Krizelman	Mr. and Mrs. Stuart Kriegermeier	Mr. and Mrs. Robert W. Lynch	Dr. and Mrs. James Mathews	Mr. and Mrs. James R. Meindl	Karen Nickelson	Ronna J. Page	Ronna J. Page
Molly and Tim Heyen	Janice Humphrey	Mr. and Mrs. Robert A. Jones, Jr.	Kimberly and Willis V. Kidd	Mr. and Mrs. Brian E. Krob	Christine Kim and Tristan Schweiger	Lenore L. and William S. Macdonald	Lindsay Maumus	Mr. and Mrs. Leon W. Moore	Neha Nigam	Jung and Junghee Pak	Jung and Junghee Pak
Andrew Heymann	Mr. and Mrs. Jeffrey L. Hunt	Russell Jones	Christine Kim and Mike Conroy	Mr. and Mrs. Larry S. Krucoff	Stephanie Kimmel and Mike Conroy	Mr. and Mrs. Jim MacGinnitie	David Mausner and Gale Zemel	Brittany Morgan	Jill Niland	C. Michelle and Donald Panovich	C. Michelle and Donald Panovich
Mr. and Mrs. William Hicks	N. J. Hunt and Barbara E. Miller	Richard W. Josd	Lynne King Roberts	Mr. and Mrs. Jay Kruse	Geraldine Kubisova	Barbara C. Mackevich	Charles Mauter	William A. Morgan	Alice Niziolek and Kathy Curran	Susan B. Noel	Helene and Aaron Paris
Daniel P. Hidding	Dr. and Mrs. James D. Hurst	David R. Joseph	Diana and James King II	Geraldine Kubisova	Gregory Kuhn	Shirley J. Macklin	Mr. and Mrs. Richard P. Mayer	Mr. and Mrs. David D. Morimoto	Susan B. Noel	Leslie and Richard North	Barbara Parker
Mr. and Mrs. Harlow N. Higinbotham	Mr. and Mrs. Thomas Hysell	Jill M. Kainu and Michael LaBuda	Franz Kirchgarrerer	Gregory Kuhn	Marybeth and Edward Kuhrt	Mr. and Mrs. Craig A. Mackrides	Joseph Mayer	Sabrina R. Morton	Leslie and Richard North	June Novalich	Elizabeth and John Parker
Jacob Granison Hill and Daniel Hieber	Mr. and Mrs. Glynn Isoda	Elyse Kallen	Betty and James Kirk	MSgt. and Mrs. Gary L. Lessenberry	Harsha Madan Kumar and Sindhuia Harsha Vardhan	Karen and John Maddalozzo	Mr. and Mrs. Henry H. Maze	Emmett Mottl	Carl Obenauf	Mr. and Mrs. Richard H. O'Connell	Elaine and Frank Parker
Beth M. and Austin L. Hirsch	Cheryl Istvan and Keith Daubenspeck	Kaitlin and Andy Kamphuis	Mr. and Mrs. Frank L. Klapperich, Jr.	Sarah Levesque	Jennifer Kunkel and Brook Enhelder	Madison Audubon Society, Inc	Mr. and Mrs. Robert G. Mc Cann	Mr. and Mrs. David Mui	Mr. and Mrs. Richard H. O'Connell	Patricia and Neil O'Connor	Mary Jo Parks
Lelia Hirsch-Amadio and Anthony Amadio	Mr. and Mrs. Roland L. Jabotte	Lily Kanter	Keith Kleehammer and Cheryl Sweeney	Mr. and Mrs. John G. Levi	Mr. and Mrs. Walter W. Kurczewski	Lory and Steve Magenta	Dr. and Mrs. Lloyd A. Mc Carthy	Zina and Hector Munoz	Patricia and Neil O'Connor	Dr. and Mrs. Patrick O'Connor	Catherine and Robert Parks
Kathleen Hoban	Mr. and Mrs. Todd G. Jackson	Jared Kaplan and Maridee Quanbeck	Dr. and Mrs. Thornton C. Kline, Jr.	Debbie Levitan	Yuliani and Peter Kurniali	Mr. and Mrs. Alan J. Magerkurth	Mr. and Mrs. William W. Mc Keever, Jr.	Mr. and Mrs. Edward C. Murawski	James D. Parsons	Stanley Parzen and Lynne Raimondo	James D. Parsons
Cathy Hobgood	Judith M. Jackson and Dannielle G. Jackson	Bethany Karsten and Nickolus McDaniel	Carissa Kloncz and Alec Bunnell	Mr. and Mrs. Kenneth C. Lewin	Lynne La Jone and Chris Mollet	Dr. and Mrs. Giancarlo A. Maldonado	Lisa McClung and Blasko Ristic	Marisa Murillo and Mathilda Murillo	Stanley Parzen and Lynne Raimondo	Diane D. Pascal	Diane D. Pascal
Jeffrey Hodges	Rohit Jacob and Rebecca Joseph	Diane S. Karzas	Audrey L. Klopp and Keith I. Klopp	Ben Lewis and Holly Finazzo	Dr. and Mrs. Richard J. Labotka	James Maletich	Stuart A. McCrary and Nancy L. Davis	Angelique Murphy and Bridget Murphy	Mr. and Mrs. William W. Oelman	Mr. and Mrs. William W. Oelman	Mr. and Mrs. Anthony C. Passanante
Sara and Alan Hoffman	Kristen Jacobsen	Ian Kash and Pornpinya Jamnong	Julie and Michael Knazur	Michael Landau	Rafael Labrador	Judith Mallchok	Jeffrey R. McDonald	Mr. and Mrs. J. B. Murphy	Joel Oikarinen	Joel Oikarinen	Mr. and Mrs. Kandasamy Pasupathy
Lindsey and George Hoffman	Bert Jacobson and Diane Siaroff	Claudia A. Katz	Judith L. Knie	Michael Landau	Fabiola Linares	Colette Malone and Pat Casey	Mary K. McDonald	Corlis D. Murray	Melissa and Jon Oka	Greg Olson	Mr. and Mrs. Kandasamy Pasupathy
Margaret and James Hohner	Andrew C. James	Mr. and Mrs. Steve Kaufman	Mr. and Mrs. John R. Knight	Michael Landau	Mr. and Mrs. John Locke	Richard D. Malone	Sherry L. McFall and Kenneth J. Porrello	Ruth J. Muyskens and Philip Postlewaite	Kevin Olson and Betsy Bowen	Kevin Olson and Betsy Bowen	Chris and Jim Patterson
Jo Ann and Edward Holba	Mr. and Mrs. Paul A. James	Patricia Kay and Nancy Gavlin			Jennifer and Richard Lombard	Diane and James Maloney	Donna and Brian McGinnis	Mr. and Mrs. James W. Myers	Tod A. Olson and Julie Stauffer	Tod A. Olson and Julie Stauffer	Mr. and Mrs. Thomas G. Patterson
M. Christine Holden	Janice A. Jarnholm				Michael Lonero and Joan Toland	Alexandra Margo Malos	Mr. and Mrs. Charles McGonegal	Elise Naccarato-Grosspietsch and John Grosspietsch	Lois M. Pausch	Lois M. Pausch	Lois M. Pausch
Ariane Holtschlag and Matthew Highland						Stephen Mancini			Jennifer A. Pavelec	Jennifer A. Pavelec	Jennifer A. Pavelec

HONOR ROLL

Monica Pawelec and Eva O'Brien	Mr. and Mrs. Frank M. Poremski	Chad Roberts	Mitra Sadrameli and Dwayne Karateew	Emily Searcy and Rebecca Lingo	Mr. and Mrs. August Skultety	Jane Stover and Ben Stover	Nicholas K. Terrell	Mr. and Mrs. Gerald A. Van Kollenburg	Laura and Robert Watson	Mr. and Mrs. Gregory Wintroub	The Edward E. Ayer Society The Edward E. Ayer Society recognizes donors who remember the Field Museum through bequests, trusts, and other planned giving or life income gifts.
Mr. and Mrs. Jerry K. Pearlman	Charles A. Pounian, PhD	Megan Robertson	Christina M. Sakowski	Jane and Joshua Sego	Charles F. Smith	Mr. and Mrs. Frank Straka	Kanjana Thepboriruk	Melody A. Van Wermeskerken	Elaine D. Wayne	Mr. and Mrs. James R. Wise	
Pete Pelletier and Ariele Keats	Jill Pozin	Diana Robin and Anne Benning	Ahmed Salah	Denise Seif and Robert A. Laible	Mary L. Smith [†]	Mr. and Mrs. John J. Streit	Mr. and Mrs. Nick Thomas	John M. VanderLinden and John Wm. Butler, Jr.	Trudie Weatherford and Mike Bourland	Dorothy H. Wolff and Eric S. Wolff	
Clark Pellett and Robert Kohl	Mr. and Mrs. John W. Prange	Chauncey H. Robinson	Mr. and Mrs. Emil Sanchez	Mr. and Mrs. T. Dwaine Sell	Therese G. Smith	Lisa and Kevin Stringer	Aurea and Richard Thomas	Deborah and Eugene Varnado	Liz Webler	Patricia A. Worth	
Mr. and Mrs. Boris Pervan	Mr. and Mrs. John F. Pustola	Mr. and Mrs. Timothy M. Rockhill	Dr. and Mrs. Joseph Sanchez	Mr. and Mrs. T. Dwaine Sell	Cheryl and Shane Solheim	Douglas Stroup and Steve Porter	Robert L. Thompson	Martin Vega and Carmen Cruz	Kathryn P. Weibel and Steve Freeman	Randall Wosilus	
Claire and Hans Peskowits	Karen Putnam	Matthew Rodriguez and Andrea Rico	Helen and Alan Sandberg	Paul Selwold and Tom Armitage	Tom Sonnleitner and Supriya Mehta	Bryan Stuba	Gretchen and Gregory Tieder	Sara Vegh and Ken Ziejewski	Mr. and Mrs. Sam Weidenbach	Mr. and Mrs. Donald P. Woulfe	
Mr. and Mrs. Nathan Peters	Mr. and Mrs. Imad Qasim	Wendy Rodriguez and Oscar Rolon	Nancy A. Sans	Michele Semin	Robyn Sotak	Mr. and Mrs. Larry Suarez	Diane Marie Tkach and James F. Freundt	Mr. and Mrs. Devin Velarde	Karen and Richard Weiland	Qian Xie and Ping Cui	
Mr. and Mrs. Mark Peters	Mary Quigg	Erik Roffelsen and Nelleke Roffelsen-Peters	Coletta Sargant	Ricardo J. Sequeira	Lori and Ted Souder	Chandrashekar Subramaniam and Santhalakshmi Chandrashekar	James Tomaszewski	Dr. and Mrs. Jeffery S. Vender	Claire Ann Weimann	Sam Yagan and Jessica Droste Yagan	
Mr. and Mrs. Michael F. Petersen	Mr. and Mrs. Craig Randall	Linda R. Rogers	Mr. and Mrs. Milan Saric	Mihra Seta	Christopher Spanel	Mary Pat and Kirk Sullivan	Mr. and Mrs. Wm. Ronald Tomecko	Daniel P. Venske	Dianne and Michael Weinand	Mr. and Mrs. Brian Yamaguchi	
Verne Peterson and Julie Lipkin	Elizabeth Ranucci and Nicolas Ranucci	Ron G. Rohde	Mr. and Mrs. Peter Sauerbrei	Sonal Shah and Pankaj Shah	Sharon E. Spanogle and John A. Spanogle	Yolanda and Vasanth Surath	Mr. and Mrs. Gregory Tracey	Mr. and Mrs. Leonard M. VerVers	Susan Weiner	Alon Yonatan	
Mr. and Mrs. Jeffrey Pfluger	Ying Rao and Guorong Liu	Julie Ann Roin and Saul Levmore	Peter F. Saunders and Patricia J. Larson	Louann Shaner	Faith H. Spencer and Mark Parts	Rosemary Susalla and Kaitlin Susalla	Mr. and Mrs. James M. Trapp	Karin L. Victoria ^E	Nora Weir	Bernadette A. Young and Jessica Young-Eleazar	Anonymous (23) Barbara and Steven Adelman Marilynn Alsdorf [‡] Dr. Katrin Asbury and Mr. Shawn Greene Rodney Austin Mr. and Mrs. James H. Banach Lorraine and Randolph Barba Mr. and Mrs. Robert D. Becker Helen R. Beiser, MD [‡] Susan M. Benton [†] Ruth and Robert [‡] Berns Lois J. Bider Susan K. and Willard L. [†] Boyd Richard T. Brannegan Frederick W. Brooke III Mrs. George R. Brumlik Leo R. Buckert Valerie and Joseph Cablk Dianne and Thomas Campbell Rita and John [†] Canning Clarissa H. Chandler Neil M. Chisholm Josephine Chyatte Mr. [†] and Mrs. Worley H. Clark, Jr. Mr. and Mrs. William D. Coates Mr. and Mrs. Stephen F. Condren Mr. [‡] and Mrs. Frank W. Considine
Elizabeth B. Phillips	Elizabeth Rathje and Robert Taylor	Edgar Rojas	Mr. and Mrs. Terry G. Schechner, DDS	Mr. and Mrs. John A. Shaw	Norman F. Spielman	Mr. and Mrs. George F. Sutherland	Mr. and Mrs. James G. Tretheway	Mr. and Mrs. Randolph M. Videkovich	Mr. and Mrs. Jerome S. Weiskopf	Janice C. Young	
Judith R. Phillips	Lori Rayburn-Zammiello	Madeline and Michael Rosenberg	David L. Schlotterback	Marjorie Shelley and Thomas Omer	Luretta Spiess	Mr. and Mrs. Eric Spratford	Liona and Ryan Trombly	Catalina J. Vielma	Gene J. Weiss, MD	Linda and Owen Youngman	
Mr. and Mrs. James E. Piechowski	Nighet Razvi	Dr. and Mrs. Neil Rosenberg	Susan D. Schlough and Andrew D. Abbott, PhD	Todd Sheppard and Amy Mason	Mr. and Mrs. Donald E. Sporleder	Mr. and Mrs. William Springer	Mr. and Mrs. William Trost	Hector Vielma and Guacolda Reyes	Andrew J. White	Feng Yue and Jiayin Zhang	
Mr. and Mrs. Edmund Piehler	Dr. and Mrs. James T. Read	Gracemary and Alex Rosenthal	Douglas M. Schmidt	Eurnice C. and Mark C. Shields	Mr. and Mrs. Eric Spratford	Sarah D. Sprowl	Mr. and Mrs. John P. Tubutis	Mr. and Mrs. James R. Vieregg	Mr. and Mrs. Scott White	Denis M. Zamirowski	
Mindy and Rob Pierce	Ognjen Redzic	Marsha and Robert Rosner	Terry Schmitt	Sun Shim	Mr. and Mrs. Charles Shenk	Gloria Stachnik	Marla J. Tucker	Daniel Wade	Jill White-Cross	F. William Zandrew	
Simon J. Piller	Richard H. Ree, PhD ^E	Abbie Roth	Matt Schneider	Mr. and Mrs. Jay Shipinski	Todd Sheppard and Amy Mason	Jennifer Stallings	Adam Tumas, Jr.	Dr. and Mrs. Albert F. Wagner	Mr. and Mrs. Larkin Whitlock	Doreen Zanutelli	
Mr. and Mrs. Jerome W. Pinderski, Jr.	Harold Rees	Karen Roth	Michael J. Schneider	Shirley C. Shriver	Eunice C. and Mark C. Shields	Clark Stanford	Mr. and Mrs. Dominic P. Turchi	Christopher Wagner and Megan McCabe	Ann B. Whitney	Yvonne Zavithsanos and Kelly Seals	
Nancy and Michael Pins	Mr. and Mrs. Andy J. Reinhard	Julie and Paul Roth	Dr. and Mrs. G. Stephen Scholly	Emily and Stephen Stanley	Mr. and Mrs. John A. Shaw	Clark Stanford	Scott F. Turow and Adriane Glazier Turow	David Unger	Michael W. Wichman	Tina M. Zekich	
Mr. and Mrs. Joseph Pisoni	Mark S. Reiter and Kathleen A. Ward	Mrs. Stephen W. Rothermel	Charles E. Schrank and Stephanie A. Foye	State Street Corporation	Mr. and Mrs. John A. Schweig	Emily and Stephen Stanley	Norma and J.J. Uhran	David Unger	Laura A. Wilber	Charles Zidek	
Mr. and Mrs. Walter J. Plank	Colleen and Charles Remsberg	Michael C. Rothman and Bonnie Fry Rothman	Margaret Schroeder	Mr. and Mrs. Kurt J. Steib	Dr. and Mrs. G. Stephen Scholly	Shirley C. Shriver	Catherine Uhrich	David Unger	Reed Wilken and Kim Larson	Mr. and Mrs. Brian Ziebart	Leo R. Buckert Valerie and Joseph Cablk Dianne and Thomas Campbell Rita and John [†] Canning Clarissa H. Chandler Neil M. Chisholm Josephine Chyatte Mr. [†] and Mrs. Worley H. Clark, Jr. Mr. and Mrs. William D. Coates Mr. and Mrs. Stephen F. Condren Mr. [‡] and Mrs. Frank W. Considine
Mary and Joseph Plauche	Sigrida Renigers and Astra M. Patrick	Alan Rottman and Gabriela Ruiz	Travis Schulz and Gretchen Wolf	Momoko Steiner	Charles E. Schrank and Stephanie A. Foye	Kelli Sias	David Unger	Elsa Vaintzettel and Louise Larsen	Dr. and Mrs. David B. Williams	Linda and John Zimnie	
Mr. and Mrs. Andrew Plautz	Mr. and Mrs. John D. Reppy	Mr. and Mrs. Mathew Rouker	Lisa and Steven Schwarz	Annette and Richard Steinke	Michael J. Schneider	Thomas Siebert	Mr. and Mrs. John P. Tubutis	Mr. and Mrs. Herschel D. Wallace III	Grady Williams	Mr. and Mrs. Earl Zingraf	
Juliana Plescia	Merle Reskin	Glenda and Phillip Rowe	Mr. and Mrs. John A. Schweig	Conrad Steinmeyer	Marsha and Robert Rosner	Paul R. Sievert	Diane Talbot and Alex Wiggins	Claire and Brian Valenti	Linda and Dale Williams	Mr. and Mrs. Edward J. Zulkey	
Peter W. Plumley and Anna M. Rappaport	Raiselle C. Resnick and Kenneth I. Resnick	Debran Rowland and Luke Hanley	Mr. and Mrs. Charles Schweizer	Steven Stender	Abbie Roth	Margaret and Alan Silberman	Elizabeth Talbot	Lynn and Paul Valentich-Scott	Nancy and Robert Williams	Mr. and Mrs. Michael Winfield	
Gregory A. Podczaski	Linda Richardson	Nathan Rugg and Pavanti Rugg	Jane and Ronald Schwuchow	Mr. and Mrs. John A. Stepan	Karen Roth	Daina and Don Siliunas	Mr. and Mrs. John Tamisiea	Ralph L. Wanger, Jr. and Monique Clarine	Audrey Williams-Lee and Byron Lee	Thomas Winter	
James Podolny	Mr. and Mrs. Jerald F. Richman	Patricia and Paul Russell	Eileen V. Schwuchow-Wehrheim and Thomas Wehrheim	Mr. and Mrs. Phillip L. Stern	Mr. and Mrs. Andy J. Reinhard	Mr. and Mrs. Alejandro Silva, Jr.	Josh Tavernier	William V. Ward and Anne Cygan	Christi Wilson		
Claire Poelking	Patricia Ann Riley			Seth M. Stevenson	Mark S. Reiter and Kathleen A. Ward	Cathryn Simkins	Gayle Taylor	Laura S. Washington [†] and Michael William Richmond	Mr. and Mrs. Timothy R. Wilson		
Philip and Amanda Pohlman	Abbey Rintels and Asenet Torres			Mr. and Mrs. Howard L. Stocker	Colleen and Charles Remsberg	Cecelia Simmons and Leontine Clark	Linda and Ernest Tellez	Mr. and Mrs. John E. Van Horn	Mr. and Mrs. Michael Winfield		
Jennifer and Joshua Poje	Abigail L. Ristow ^E			Erica and Paul Stockton	Mr. and Mrs. John D. Reppy	Carol B. Skala	Steven F. Tempel and Deborah Zekich	Kimberly and James Watson			
Mr. and Mrs. Jay D. Pollitt				Kathleen and James C. Stockwell	Merle Reskin	Margaret Skrmetti and Jerel Bangayan	Mary Tendick				

HONOR ROLL

Mark Crane	Delta A. Greene	Mr. and Mrs. Jerry M. Kelly	Karen A. Nordquist	Robert Rowan	Judith B. Sugarman
Rebecca Davidson	Evelyn R. Greene ^º	Patricia Kosmerl	Mr. and Mrs. John R. O’Connell	Jeanne M. and John W. [†] Rowe	Lawrence and Margaret Tomaszek-Witry
Susan and Mark Dawson	Joyce and Timothy Greening	Jan and Richard ^{TE} Lariviere	Irma Parker	Ryan S. Ruskin [†]	Linda J. Volino
Cheryl and Michael Del Campo	Katherine Leslie Griem, MD and Anthony G. Montag, MD ^º	Fay and Daniel Levin	Dr. and Mrs. William R. Parkhurst	David L. Schlotterback	Rose and Robert Wagner
Janet W. Diederichs		Diane v. S. [†] and Robert M. Levy	Jo Ann and Joseph Paszczyk	Douglas M. Schmidt	Georgean Goldenberg
Candace and Gary Drimmer	Mr. [†] and Mrs. Lewis S. Gruber	Gail J. and Robert B. [†] Loveman	Marie E. Peruscini and Edward C. Bapple	Franklin R. Schmidt	David A. Wargowski
Glenna R. Eaves and Christopher J. Boebel	David D. Hiller [†]	Janice and Bernard Mack	Susanne Petersson	Patricia O. Schnadig	Nestor R. Weigand, Jr.
La and Philip Engel	Marjorie and John Hines	Ann C. Mallow	Mr. and Mrs. Richard J. Pigott	Thelma L. Schwartz	Dianne M. Weinand
Fabio Fabbri	Mary P. Hines	Patricia A. Malloy	Julia Potter	Monica and Stephen Sentoff	Barbara H. West ^º
Carl B. Fausey	Peggy L. Hoberg	Marie Spinozzi Marotta	Mr. and Mrs. G. Curtiss Shaffer II	Willard E. White, PhD	Claudia L. Winkler
Mary and Bruce Feay	Anita and James Hornbrook	Mr. and Mrs. Robert G. Mc Cann	Charlene and Bob Shaw		Barbara A. Wolf
Suzette Feher	Arlys R. Hunt	Nancy A. McDaniel	David T. Shayne		James G. Young
Sally Fletcher	Datin Tan Fui Lian and Dato Dr. Robert F. Inger ^º	William B. McDonald and Ptah Sekhmat Osiris	Mrs. Alfred Lunt Putnam		Kristie Zessin
Dr. and Mrs. Curtis B. Frank	Stacy L. Johnson	M. Madlan McKernan	John R. Rahn and Patricia E. Rahn		The Zigterman Family
Penny and John E. Freund	Mr. and Mrs. Robert A. Jones, Jr.	Erma S. Medgyesy	Dominick S. Renga		Christine C. Zogus
Glenn L. Gabanski	Kathleen and Alex Kallend	Lois and Robert Moeller	Alan Resetar ^E and Donna Resetar		
Linda and Wilbur [†] Gantz	Verla Kasmerchak	Anne M. Morgan ^E	Richard F. Reynolds		
Lyle Gillman ^º	Beth and Eric Kauffman	Sandra L. Mueller	Tonja Rizai Hall		
Beth and Robert Gordon	Beth and Eric Kauffman	Sandra and James Napolitan	Anita J. Rogers		
Gilda M. Greenberg and Norman Charles Greenberg ^º	Constance [†] and Dennis Keller	John P. Nielsen	Mr. and Mrs. Benjamin Rooks		



Digging Up Engagement

In the summer of 2019, urban explorers had a unique chance to experience Field Museum science. Thanks to generous support of the Wirtz Corporation, the Field opened a limited-time pop-up experience in the heart of downtown Chicago at 333 North Michigan Avenue. Designed to look like an active dinosaur dig site, the pop-up conveyed the very real discoveries made by Field scientists all around the world. Through digital promotions, a striking store-front window, and interactive experiences, the pop-up engaged more than 42,000 visitors on-site and raised awareness about the Field with more than 900,000 digital impressions. Visitors came away with positive impressions of the Field Museum as an active institution engaged in collections and research around the globe.

2019 Estates and Bequests

The Field Museum recognizes the following individuals for their bequests, legacies, and estate gifts.

Dr. Evelyn Frank Trust
Evelyn R. Greene
Susan D. Hoyne
Theresa and Edward Jerkey
Geraldine C. Kolb
Mr. and Mrs. Lester Mandelstein
Betty D. Prout
George B. Rabb, PhD
Raymond A. Seng
Charlene Landsberg Smith
Nancy Torbet
Barbara H. West

2019 Matching Gift Companies

The following companies generously matched gifts from their employees and retirees in support of the Field Museum in 2019.

Aetna
ArcelorMittal
Baker Hughes Foundation
The Boeing Company
BP America Inc.
Caterpillar, Inc.
CTC Trading Group L.L.C.
The FM Global Foundation

Ford Foundation
GE
GEICO Philanthropic Foundation
W.W. Grainger, Inc.
IBM
IDEX Corporation
IMC Global Incorporated
ITW
Johnson Controls, Inc.
JPMorgan Chase Foundation
Kayne Anderson Capital Advisors Foundation
John D. and Catherine T. MacArthur Foundation
McMaster-Carr Supply Company
Millennium Pharmaceuticals, Inc.
Morgan Stanley Matching Gift Program
Motorola Solutions
Northern Trust
Oracle Corporation
Quarles & Brady, LLP
Salesforce.org Foundation-Matching Grants
State Farm
U.S. Bank
UBS
John Voss Family Foundation
William Blair & Company
Winston & Strawn LLP

2019 In-Kind Gifts to Collections

ANTHROPOLOGY

Dean E. Arnold, PhD
Susan Bass Noel
Bawan Jacon Clanes, Mindanao Indigenous People’s Council of Elders and Leaders
Anne W. Brown
Mary Callahan
Rose-Marie Fraser
Gabel Museum of Archaeology, Boston University
Anne Kern
Richard Maryonovich
Theresa L. Miller
Laura Sudler
John E. Terrell, PhD^E
Cynthia S. Weill

BOTANY

L. W. Curtis
Joan Damerow, PhD^E
Eastern Illinois University, Charleston
Eidgenössische Technische Hochschule ETH, Zürich, Switzerland
Florida Museum of Natural History, Gainesville
Harvard University, Cambridge
Missouri Botanical Garden, St. Louis
New York Botanical Garden, Bronx
North Carolina State University, Raleigh

Ramkhamhaeng University, Bangkok, Thailand
Real Jardín Botánico, Madrid, Spain
Royal Botanic Gardens, Kew, United Kingdom
United States National Arboretum, Washington D.C.
Universidad de Concepción, Chile
Universidad de Costa Rica, San Jose
Universidad de Magallanes, Punta Arenas, Chile
Universidad Nacional Autónoma de México, Mexico City
Universidade Federal do Rio Grande do Norte, Natal, Brazil
Université Laval, Quebec City, Canada
University of Arizona, Tucson
B. Wilson

Thomas Beauvais
Rudiger Bieler, PhD^E
Gudrun Buhl
Denver Museum of Nature & Science
Michael O. Dillon, PhD
Steven M. Goodman, PhD^E
Peter Hovingh
Richard W. Lariviere, PhD^E
Peter Makovicky, PhD
Mariana P. Marques
Minnesota Historical Society
Debra Moskovits, PhD^E
Alfred F. Newton, PhD^E
Matthew Nitecki, PhD
Nigel Pitman, PhD
Allen F. Roberts
Mary Anne Rogers
Barbara Roux
Analyn “Ikin” Salvador-Amores
Rachel Silberstein
Sterling Morton Library
Bernard Tardif
John E. Terrell, PhD^E
Nguyen Ngoc Thach
Delfin Tolentino
Byron^º and Sally Torke
Edward J Valauskas
Mark Westneat, PhD
Philip W. Willink, PhD

GEOLOGY

Terry, Gail[†], Christopher, and Evan Boudreaux
Rick Hebdon
James and Sylvia Konecny
Museum of Texas Tech University
Keith Robitschek
Dean Sherman
Bruce Stinchcomb
Thomas V. Testa
Roy Young
University of Antananarivo, Madagascar

LIBRARY

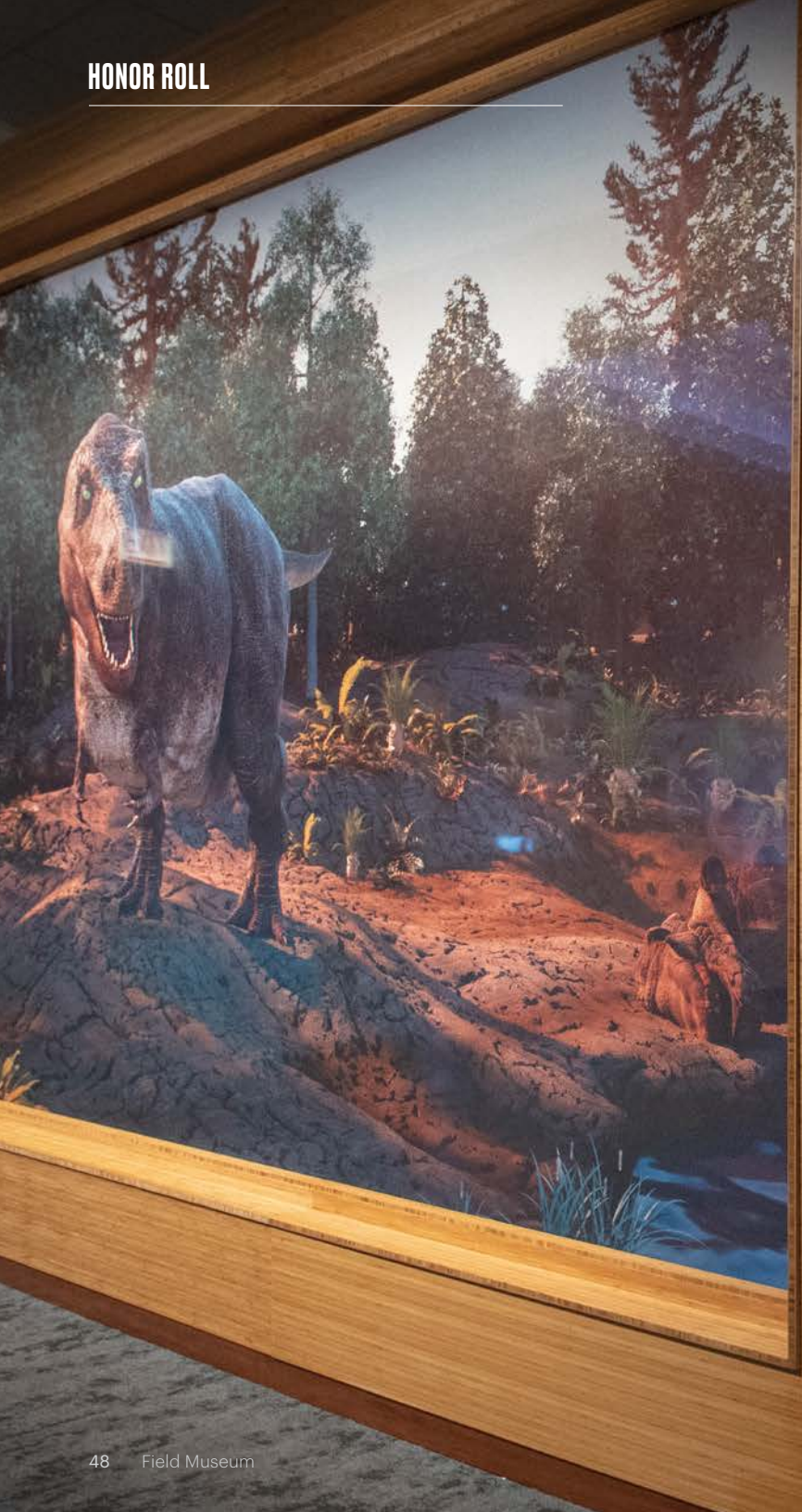
Windsor E. Aguirre

Thomas Beauvais
Rudiger Bieler, PhD^E
Gudrun Buhl
Denver Museum of Nature & Science
Michael O. Dillon, PhD
Steven M. Goodman, PhD^E
Peter Hovingh
Richard W. Lariviere, PhD^E
Peter Makovicky, PhD
Mariana P. Marques
Minnesota Historical Society
Debra Moskovits, PhD^E
Alfred F. Newton, PhD^E
Matthew Nitecki, PhD
Nigel Pitman, PhD
Allen F. Roberts
Mary Anne Rogers
Barbara Roux
Analyn “Ikin” Salvador-Amores
Rachel Silberstein
Sterling Morton Library
Bernard Tardif
John E. Terrell, PhD^E
Nguyen Ngoc Thach
Delfin Tolentino
Byron^º and Sally Torke
Edward J Valauskas
Mark Westneat, PhD
Philip W. Willink, PhD

BIRDS

Fran Alcantara
Thomas G. Anton
Josie Archuleta
Laura Bailey
Tim Balassie
Anna Balla^E
J. Banometz

Daniela Barnes
D. Barrio
Sarah Bass
John Bates, PhD^E
Kellie Bauer
Alissa Baum
Bay Beach Wildlife Sanctuary
Leslie Bayles
M. Bernat
A. Biewer
Stephanie Beilke
Nancy Bigelow
Jonathan Bissows
Gwen Blossom
K. Bohora
Nancy Bradt
Frandy Breems
Brookfield Zoo
J. Bunker
M. Burgess
Bonnie Bush
L. Byzrwicz
A. Caldarulo
Elaine Carlson
M. Carrington
Kevin Carroll
Gwen Casey
J. Catallom
Chicago Bird Collision Monitors
Liz Challoner
Janet Chang
Theodore Chapman
Suzanne Checchia
B. Chenoweth
Alexander Clifton
Deborah Cohen
Diane Cohen



A New Home for SUE

In late 2018, the Museum unveiled a special new gallery in the *Griffin Halls of Evolving Planet* for SUE—the largest, most complete, and best-preserved *T. rex* ever found. Since SUE was first introduced to the world in 2000, visitors have consistently asked for more information about *T. rex*, and the context of SUE’s world. This new exhibition presents new information scientists have learned from the fossil’s unrivaled completeness. And it was the perfect time to update SUE’s skeleton and positioning with the most recent science.

Upon entering SUE’s new domain, visitors are transported back 67 million years to a Late Cretaceous forest, where they come face-to-face with one of the world’s most notorious predators. A visual presentation explains what scientists know about SUE and *T. rex* from studying this remarkable fossil. Sensing stations allow visitors to experience how *T. rex* sounded, how its skin felt, and even how its breath smelled.

The Griffin Dinosaur Experience, made possible by the generous support of the Kenneth C. Griffin Charitable Fund, includes a special traveling exhibition, Antarctic Dinosaurs; Máximo the Titanosaur; updates to SUE the T. rex and the Griffin Halls of Evolving Planet; and new dinosaur education programs.



Dinosaur Educator Toolkit



To accompany the Griffin Dinosaur Experience, the Museum launched a special dinosaur toolkit for educators. This resource includes a collection of free digital resources to bring Field Museum science and collections to third through twelfth grade classrooms. Students can explore evolution, geologic time, and continental drift by interacting with digital 3D models of SUE and other specimens, visiting geologic periods to compare life at different times in an online educational game, and discovering how dinosaurs like Máximo evolved to be so large through interactive lessons. These resources enrich field trips by preparing students for a visit and can also stand alone as enhancements to any science curricula.

(Above) Interactive sensing stations in SUE’s new gallery allow guests to smell plants that would be found in a Cretaceous forest.

HONOR ROLL

BIRDS continued

Daryl Coldren	Margot Fischer	Laine Hoffman	Kayleigh Kueffner ^E	Paul Miessler	K. Price
Jeff Coleman	A. Flores	C. Holden	Ruth Kurczewski	G. Mikels	Annette Prince
S. Conner	Ryan Ford	Scott Holingue	K. Lara	Minnesota Dept. of Natural Resources	Robert Prosis
M. Conroy	Itamar Frances	Patrick Hu	Amy Lardner	Nat Miller	Anita Quint
Caroline Cooper	Eric Frazer ^E	Dan Hudson	Jim LaRochelle	Lucy Milling	Teri Radke
V. Cortis	Robert Frye	L. Hyndman	J. Larsen	Clover Morell	E. Ramirez
Steve Constantelos	Ryan Fuller	Datin Tan Fui Lian	Al Legzdins	Madeleine Murphy	H. Reilly
Andrew Cox	Glenn Gabanski	Tamima Itani	Mike Lehman	M. Myerly	E. Rensink
Rita Crimmins	Diane Galleher	Carla Jaffe	K. Lehner	Noelle Neel	Hennie Reynolds
Kelly Cronin	Ivan Garcia	M. Jagers	P. Liecano	N. Neuhouser	Patricia Rich
Angela Daidone	M. Garfinkel	Judy Jakush	Lorna Lightle	Betsy Newenhayse	Rawlins Riles
J. Dalton	Oliver Georg	Julie Jeslewitz	Hans Lim	L. Nieman	Helen Robbins, PhD ^E
Marjorie David	Jochen Gerber, PhD ^E	Susan Jicha	A. Lizcano	I. O'Brien	Alexander Roche
T. Davis	J. Geslewitz	Genevieve Johanet	N. Lloyd	Tim Oesterle	Geri Rode
Patricia Davoust	Kathleen Gillespie	David Johnson	Julie Long	K. O'Mara	Bob Rogers
Steve Deines	Gerry Ginsburg	J. Johnson	Loren Lopez	Katie O'Neill	Charlotte Ross
Robyn Detterline	Bonnie Glen	Jessica Johnson	Sharon Losos	Megan Oropeza	Laurel Ross
Michael O. Dillon, PhD ^E	N. Goldberg	Luna Johnston	Max Loude	Nathan Overly	M. Roof
Joan Dittman	Susan Golland ^E	Scott Joss	Peter Lowther, PhD	Philip Pappas	Tony Rothschild
Georgiana Dodd	Valentina Gomez	Rebecca Judd	Mary Loye	E. Parker	Paul Routsong
Ann Domek	Kristin Goodchild	S. Judd	K. Lynch	M. Parola	K. Rudenki
Patrick Donahue	Mike Grady	John Kaiser	Sean Lyon ^E	Cathy Patrick	Mykl Ruffino ^E
Kelly Dougherty	James Graham	Tim Kano	S. Machugin	B. Payne	Bob Russ
Cheryl Dudeck	Emily Graslie ^E	Will Kano	Elsa Madrigal	Barbara Pearce	Jill Russell
Janna Dutton	Cindy Gray	Pam Karlson	Debbie Maher	Joy Peplinski	Lynette Ryzewicz
John Dziadus	Bruce Green	Becky Kass	Ashley Makarowski	Duyimiris Pequero	Erick Saklak Sanders
Glenna Eaves	S. Griegoliet	V. Katz	B. Malather	D. Perry	Jeremiah Schatt
Louise Ebel	L. Grimm	Joyce Keithley	Ben Marks, PhD ^E	Dorothy Pesch	J. Schaumburg
Suzanne Edwards	R. Haick	John Kelly	Jennifer Marshall	Therese Peskowits	R. Schettler
L. Ellerman	A. Hall	Patti Kelly	JoAnn Martinec	Mark Peteler	Susan Schmidt
Shannon Ellis	Matt Hejna	L. Keyes	K. Martinez	Shelby Peteler	M. Schmitt
Joshua Engel ^E	Mary Hennen ^E	Sarah Kimber	Colleen McKeigh	Caitlin Peters	Kim Schollenberger
Michelle England	Patrick S. Herendeen, PhD	Dennis Kingsley	Margaret Mechtenberg	John Phelps ^E	J. Scholt
Marty Farrington	M. Hernandez	Gerald Klemm	Lynne Mecum	Kimberly Polka	Alma Schrage
Joe Feliciano	M. Hinami	Steven Klink	David Mendez ^E	Margarita Poromanska	Gabrielle Schreiber
Sandy Fejt	Kanae Hirabayashi	J. Kothley	Laura Mendoza	Marina Post	Sarah Schwartz
D. Fieri	Maria Hlohowskyj	L. Kouba	Greg Mercer ^E	Jeff Prendki	Greg Septon
	S. Hodges	Marcie Krause ^E	Julia Meredith		Leslie Shad

Karen Shaw	Victoria Velinski	Terry Demos, PhD ^E	Miklós Szekeres
Barbara Shaw	L. Venderly	Eastern Illinois University	Nguyen N. Thach
E. Siciliano	S. Verhaeghe	I. Enushchenko	Byron ^D and Sally Torke
D. Simpson	Denise Verret	Steven M. Goodman, PhD ^E	Jan Johan ter Poorten
Alison Sloan	Anita Victorn	Andrea Gruver	MAMMALS
Jacob Smith	Mary Vierega	Derek A. Hennen	Bay Beach Wildlife Sanctuary
Jeff Smith	Linda Volin	Ulrich Irmiler	Brookfield Zoo, Chicago Zoological Society
Julia Smith	Sarah Von Fremd	Michael A. Ivie	Gary S. Casper
L. Smith	Oswald Von Starck	E. A. Khachikov	Adam W. Ferguson, PhD ^E
Natalie Smith	Kristin Wacker	James Krupa	Mary and Bruce Feay
T. Spratt	Ellen Wadlej	Tyrone Lavery, PhD ^E	Steven M. Goodman, PhD ^E
A. Sohn	Cicily Watson	Donald C. Lowrie	Thomas Gnoske ^E
C. Sonnier	J. Wawro	Crystal A. Maier, PhD ^E	Lawrence R. Heaney, PhD ^E
Laura Southcott ^E	D. Wear	György Makranczy	
David Stagman	Marcia Weflen	Weston Opitz	
Jim Steffen	Mary Wiesen	Luis Daniel Perez Sauni	Debbie Johnson
Candace Steffens	Robert Wild	Steve Parshall	James J. Krupa
P. Stegner	Chris Williamson	Bruce D. Patterson, PhD ^E	Lincoln Park Zoo
K. Stelford	David Willard, PhD ^E	Graham Pickren	D. R. Ludwig
Doug Stotz, PhD ^E	Willowbrook Wildlife Center	Amanda Robinson	Molly M. McDonough, PhD
Bill Strausberger	M. Witowski	Rodrigo dos Santos Machado Feitosa	Antonio R. Mendes Pontes
Kevin Swagel ^E	Sandy Woltman	A. E. Seago	Minnesota Department of Natural Resources
Kathy Swanson	David Wong	Laura Southcott ^E	Kathleen Murphy
Sandy Swanson	Ann Woodward	Tim Struyve	Maureen H. Murray
Betty Sweetland	Lisette Zaid	Margaret K. Thayer, PhD ^E	Simon Musila
R. Tanda	Nancy Zeglen	Alfred F. Newton, PhD ^E	Aristofanes Pontes
Ann Tanner	Amanda Zeigler	Shuhei Yamamoto, PhD ^E	John G. Shedd Aquarium
Linda Tartof	B. Zerante		Jay Smith
J. Tavolino	Sophie Zivovic		Kevin Swagel ^E
Colleen Tiesch		INVERTEBRATES	Noe de La Sancha, PhD
Simon Tolzman		Frank E. Anderson	MJS Richards
S. Touzalin		Joseph A. Arruda	Mary Anne Rogers
Mike Trinchitella		Brookfield Zoo, Chicago Zoological Society	Douglas Wamolts
Brian Tsuru		André Bochov	Willowbrook Wildlife Center
Suzanne Turner		James H. Boone	
D. Utley		R. M. Brattain	
Denise Umpiere-Roth		Edilson Caron	

Volunteer Leadership

The Women's Board of the Field Museum

The Women's Board promotes the Field Museum's scientific programs, exhibitions, and educational outreach. Members facilitate philanthropic activities to provide essential unrestricted and restricted support.

EXECUTIVE COMMITTEE

Donna Greenberg ^T <i>President</i>	Allison Schmitt <i>Annual Appeal Co-Chair</i>
Laura Podjasek <i>Vice President</i>	Liz Sharp <i>Annual Appeal Co-Chair</i>
Laura Silva <i>Vice President</i>	Jessica Steffensen <i>Membership Co-Chair</i>
Beth Kauffman <i>Secretary</i>	Jeannie Tisbo <i>2020 Women in Science Luncheon Co-Chair</i>
Beth Glass <i>Treasurer</i>	Lynda Williams <i>Outreach Initiative Co-Chair</i>

Karen Gray-Krehbiel^T
Nominating Chair

Tonja Hall
Field Dreams Co-Chair

Megan Hoffmann
2019 Gala Chair

Laurie Kracum
Field Dreams Co-Chair

Jan Lariviere
Outreach Initiative Co-Chair

Susan McBride
Immediate Past President

Deanne McLean
Member Engagement Co-Chair

Bev Pinaire
Field Dreams Co-Chair

Allison Schmitt
Annual Appeal Co-Chair

Liz Sharp
Annual Appeal Co-Chair

Jessica Steffensen
Membership Co-Chair

Jeannie Tisbo
2020 Women in Science Luncheon Co-Chair

Lynda Williams
Outreach Initiative Co-Chair

President's Leadership Council

The President's Leadership Council is an auxiliary group of established professionals with an interest in civic and philanthropic activity.

Ryan Ruskin^T
Chair



HONOR ROLL

Professor’s Passion Enhances Field Museum Collection

Every year, the Museum receives gifts of artifacts and specimens from organizations and personal collections—like the shell collection of Byron G. Torke, PhD, which was donated to the Museum by his widow, Sally Torke. A Crustacean zooplankton expert, Dr. Torke developed a passion for sea shells and assembled a remarkable collection of 18,000 individual specimens from all around the world. The material contains thousands of small, obscure, and hard-to-obtain species, many of which are new to the Field Museum’s holdings. Dr. Torke’s collection is one of great scientific significance and shows the value of combining scientific curiosity with the stewardship of natural history collections to form a living legacy for the future of scientific inquiry.

Field Associates Executive Committee

The Field Associates are committed to engaging young professionals through dynamic networking and leadership opportunities, unique programs, meaningful service, and fundraising to support scientific discovery and public education.

- Alin Schubert^T
President 2020-2022
- Ryan VanHolsbeke^T
President 2018-2019
- Richa Kotecha
Vice President 2020-2022
- Michelle Sotak
Vice President 2018-2019
- Julie Webb
Secretary
- Shanna Quinn
Communications Co-Chair
- Chris Spanel
Communications Co-Chair
- Jenna Beltrano
Development Co-Chair
- Kyle Fonjemie
Development Co-Chair
- Charlotte Guyett
Development Co-Chair
- Ani Ajith
2019 Evolve Co-Chair
- Richa Kotecha
2018-2019 Evolve Co-Chair
- Emmett Mottl
Membership Co-Chair
- Alin Schubert^T
2018-2019 Membership Co-Chair

- Mike Cozza
Programming Co-Chair
- Mariah Vichich
Programming Co-Chair

Anthropology Alliance Steering Committee

The Anthropology Alliance promotes interest in and support of the Field Museum’s anthropological collections and research.

- Susan Mikalauskis
Chair
- Joyce E. Chelberg
- Melissa Genova Hill
- Morris Goodman
- Janice Bell Kaye
- Patricia A. Malloy
- James O. Stola
- Sheila N. Whalen
- Carl F. Wolf

Giving Day Ambassadors

The following members, donors, staff and volunteers served as Giving Day Ambassadors. They played a vital role in the success of this initiative by extending its reach through their networks and by raising funds on their personal giving pages.

- Rachel Baily^E
- Katie Baltensperger^E

- Stanley Banks^E
- Sierra Clark
- Dawnn Cleveland
- Kyle Daniels^E
- Aimee Davis^E
- Allison Diedrich
- Connie Eyer^E
- Lauren Fitts
- Chandler Garland^E
- Nicolette Hansen^E
- Kathryn Harris^E
- Jaap Hoogstraten^E
- Syed Husain
- Jill Hutchinson
- Bob Jones^E
- Elyse Kallen
- Charles L. Katzenmeyer^E
- Jamie Kelly^E
- Hannah Keogh
- Caryn Knowles^E
- Carrie Krueger
- Carla Lents
- Kevin Lewandowski^E
- Qin Li
- James^E and Cherisse Louderman
- Alexandra Lucio^E
- Christopher McGarrity
- Erin Meyer^E
- Melissa Moeser^E
- Joey Monahan^E
- Anne M. Morgan^E
- Malika Morris^E
- Emmett Mottl
- Lisa C. Niziolek, PhD^E
- Ellen O’Hanlon^E
- Dixie Ost^E
- Michael Padilla^E
- William Parkinson, PhD^E
- Rosemary Peckler

- Ernst Pierre-Toussaint^E
- Iza Redlinski^E
- Mae Riordan^E
- Ryan Ruskin^T
- Evan Saitta^E
- Vicky Sanchez^E
- Maggie Schneiderman^E
- Kent Shafer
- Jacob Shuler^E
- Kevin Stineman^T
- Usha Subramanian^E
- Anne Sullivan^E
- Kristine Thomsen
- Madeleine Tutor^E
- Dawson White
- Darnell Williams^E
- Jolynn Willink^E
- Shannah Wojtyska^E
- Michael Wren^E

Council On Africa

Members of the Council on Africa provide support for on-going programs that build capacity to allow Field scholars to train the next generation of young African scientists.

- John Bates, PhD^E
Co-Chair
- Nancy A. McDaniel
Co-Chair

Field Museum Volunteers

Field Museum volunteers contribute their time and skills to advance the Museum’s mission. Behind the scenes and in public exhibitions, volunteers support Museum staff and visitors alike.

500+ HOURS

- Laurel Bresnahan
- Irene Broede
- Drew Carhart
- Christine Frazer
- Margaret Hintz
- Sarah Howard
- Bernice Jacobs
- Craig Johnson
- Peter Lowther
- Don Morrison
- Mane Pritza
- Robert Salm
- Nina Sandlin
- William Sherry
- Thomas Snak
- Kuro Wilks
- Kurt Zahnle

200-499 HOURS

- Robert Andrini
- Scott Anselmo
- Jan Marie Aramini
- Josephine Archuleta
- John Balaban
- Mery Elyn Baron-Pocius
- Betty Bergstrom
- Dyanna Bernier
- Robert Boswell
- Theresa Boswell
- Joseph Cablk

- Del Cahill
- Vinicius Camargo Penteado
- Mary Jo Cappitelli
- Emily Carnalla
- William Carroll
- Robert Case
- Gastone Celesia
- Emily Clark
- Edward Coughlin
- Pam Coughlin
- Margaret Crawford
- Gina De Keersmaecker
- Mark DeSantis
- Philip Dittmann
- John Dunn
- Thomas Durica
- Ralph Earlandson
- Eric Elshtain
- Glenn Gabanski
- Gerard Gagne
- Peter Gayford
- Mark Graham
- David Graves-Pomeranz
- Ann Greljak
- Gayle Guzik
- Richard Guzik
- Mary Harland^D
- Mattie Harris
- Joyce Hecht
- Mary Heisley
- John Hill
- Diep Hoang
- Mary Pat Hofer
- Darcae Holmes
- Patrick Hu
- Norene Jamieson
- Gregory Johnson
- James Kase
- Bruce Keating
- Mary Ann Khan
- Rachel Kistinger

- Joanne Levy
- Shau Yin Luk
- Joann Martinec
- Richard Maryonovich
- Aaron Mercer
- Paul Miessler
- Angela Morris
- John Morris
- Eileen Murphy
- Frederick Orendach
- Marie Orendach
- Maria-Isabel Orozco-Vela
- Mildred Osgood
- James Piekarszyk
- David Prus
- Loran Recchia
- Ashley Reilly
- Susan Reinke
- Leslie Robin
- Judith Rom
- Michael Roth
- Jeffery Schroder
- Karen Sharpe
- Copper Sheldon
- Elizabeth Simmons
- Terri Sinnott
- Nicholas Sitaras
- Evan Sizemore
- Robert Somrek
- Laura Southcott
- Beth Spencer
- Robert Spieler
- Marc Stackler
- Rebecca Taylor
- Darren Vilmin
- Linda Volino
- Usha Vyas-Major
- Phyllis Walden
- Claudia Winkler
- Steven Zitowsky

2019 In-Kind Gifts

- United Airlines
- Aurelio’s is Pizza Franchise, Ltd.
- Suzanne Ware

2019 Tribute Gifts

IN HONOR OF

The Allocco Family
Jennifer Morris

Paul Arola
Barbara Arola

Stanley E. Banks^E
Usha Subramanian^E and Deepak Raghunathan

Catherine Becker
Mr. and Mrs. Robert D. Becker

Judith S. Block^T
Brayton and Pim Alley
Mr. and Mrs. Richard J. Almeida
Lindsey and Merrick Axel
Mr. and Mrs. Peter B. Bensinger
Roger G. Bensinger
Mr. and Mrs. Christopher Block
Margaret S. and Philip D. Block, Jr. Family Foundation
Noelle C. Brock
Mr. and Mrs. K. D. Brooksher
Jacolyn and John^T Bucksbaum
Daniel Cohen
The Comer Foundation
Mrs. John V. Crowe
Mr. and Mrs. Alfred E. D’Ancona II
James and Melanie Deromedi
Mr.^T and Mrs. Roger K. Deromedi
The Donnelley Foundation

Mr.^{DT} and Mrs. Richard Elden
Mr. and Mrs. W. James Farrell
Mr.^T and Mrs. Marshall Field V
Mr.^T and Mrs.^T James J. Glasser
Mr. and Mrs. John W. Higgins
Suzanne Huszagh and Christian Schmidt
Edgar D. Jannotta, Sr.
Mr. and Mrs. John P. Keller
Mr. and Mrs. Aaron Klein
Mr. and Mrs. Kevin R. Lawler
Mr. and Mrs. John W. Madigan
Susan and John McBride
Mr.^T and Mrs. John W. McCarter, Jr.
Andrew & Jeanine McNally Charitable Foundation
Mr. and Mrs. Ward S. McNally
Mrs. Earl L. Neal
Cathy and Bill Osborn
Lorna and Ellard Pfaelzer
Mr. and Mrs. Bernard B. Rinella
Mr. and Mrs. Jeffrey S. Ross
Patrick G. and Shirley W. Ryan Foundation
Mr. and Mrs. Gordon I. Segal / Segal Family Foundation
Mr. and Mrs. Richard J. L. Senior
Mr. and Mrs. Jeffrey S. Sharp
Mr. and Mrs. John R. Siragusa
The Smart Family Foundation
Mr. and Mrs. Neele E. Stearns, Jr.
Jeannie and Thomas Tisbo
John & Carol Walter Family Foundation, Inc.
Kim^D and Miles^T White
Willard L. Boyd^T
Chad Roberts
Timothy M. Bratley^E
Elyse Litwack
Carol A. Macola and Nicholas C. Macola

^TTrustee ^DDeceased ^EEmployee



Giving Day

The Museum’s fifth annual Giving Day, on October 16, was an unparalleled success—raising \$334,000 from 740 donors in 24 hours, surpassing goals of \$100,000 from 600 donors. 61 Giving Day Ambassadors raised almost \$40,000 while 180 staff and volunteers participated with a gift to the Museum. SUE was a valuable Giving Day partner bringing 31 new gifts through its twitter account.

With a theme of “Support Tomorrow’s Scientists,” Giving Day 2019 brought together members and donors in support of the next generation of scientists.

- Brienne, Noah, Samara, Isaac and Dalia**
Doug Einstein and Brienne Einstein

Veronique Bugnion, PhD
Adam Mihalik

William C. Burger, PhD
Mrs. William Kaye Beatty

John Chorn, PhD
Jeffrey Tschiltsch

Jim W. Croft, PhD
Anonymous

Ellen Currano
Diane Currano and Ellen Currano

Aimee S. Davis^E
Beam Suntory Matching Gifts Program
Steven Davis

Nanny Sarah Day
Meagan Johnson and William Cotton

Lee Dempsey
Mr. and Mrs. Tom Dempsey

Mr.^T and Mrs. Roger K. Deromedi
Linda Anderson

Dylan, Lucas and Imogen
Alexis and Craig R. Eylar

Jamee C. Field Kane^T
Mr. and Mrs. Hugh Jones
Mr. and Mrs. Ward S. McNally
Stefan Szczerba
Anne Camden Tucker

Field Museum Scientists and Curators
Anonymous
Scott H. Lidgard, PhD^E

- Amy S. Findlay**
Mr. and Mrs. Paul Crnkovich
Mr. and Mrs. W. Bruce Johnson

Kevin Flowers
Mira Flowers

Hazel Ann Fricke
Gretchen Gillis

Wilbur H. Gantz III^T
Caroline and Michael Burns
Barbara Parker

Angela Garcia
Andreas Feldmann and Helena Olea

Debbie Giorno
Christopher Giorno

Christopher O. Glass
Mr. and Mrs. Michael S. Paleczny

Donna Greenberg^T
Elaine and Ronald Prebish

Natalie Gruber
Joy A. Gruber

Julia and Elias Gutiérrez Montero
Sergio Gutiérrez Montero and Chada Saetie

Helen Harvey
John K. Edwards

Wrayla Rose Hetzel
Andrea Hetzel

Dawn Hill
Marlene Donnelly

Stephen Hillenburg
Daniel J. Westman

- Megan Hoffmann**
Andrew Farbman

Bob O. Jones^E
Nancy Brown
David C. Schlakman
Tony Vecchio

Charles L. Katzenmeyer^E
Michael Anderson
Lisa Dietlin
Mr. and Mrs. John T. Doherty
Judith M. Gibbs
Debra Kerr and Steven Thompson
Kathleen Jacob
William Kunkle
Richard D. Malone
Kevin J. Mork
Jane O’Mahoney
Diane D. Pascal

Benjamin Kellman
Suzanne and Gabe Kellman

Wendy Kilcollin
A. Lawrence Crimmins, Jr.

Thomas F. Kotlarski
Carolyn Kotlarski

Taya Kurokawa
Mr. and Mrs. Jason Kurokawa

Jan and Richard^{TE} Lariviere
DOMAH Fund
Jeani and Rich Jernstedt
Mr.^T and Mrs. Jeffrey B. Keller
Richard M. Levin^T and Sally J. McDonald

Matthew Leahigh
Lorrie L. Leahigh

Abigail Leyden
RuthAnne Mills

- LJ**
Charmaine Yang-Atian

Alexandra N. Lucio^E
Gerald Lucio

Peggy Macnamara^E
Mr. and Mrs. Jason Ciaglo

Sally Mahs
Joyce E. Hecht

Michele Makinen
Marvin Makinen

Sandra Mance
Matt and Kyle Mance

Sophia and Evelyn Matthews
Mr. and Mrs. Thomas J. Mathews

Máximo
Mary O’Shea

Peter McGrail
Mary and Peter McGrail

Swati and Bobby^T Mehta
Satinder and Ranjit Bhatia
Mr. and Mrs. Harold C. Jenkins, Jr.
Alice and John Sabl

Laura Milkert^E and Dr. Todd Widhelm^E
Kathleen Garness

Bob Miller
Mr. and Mrs. Frank J. Pensiero

Catherine Miller^E
Mr.^T and Mrs.^T Jack M. Greenberg
Elizabeth Halajian

Nico Montero
Jan and Richard^{TE} Lariviere

- Anne M. Morgan^E**
Northern Illinois Planned Giving Council

Debra Moskovits, PhD^E
Cinda Axley
Bobolink Foundation
Mr. and Mrs. Bruce Boyd
Winnie and Bob^T Crawford
Mr.^T and Mrs. Marshall Field V
J. S. Frank Foundation
Gantz Family Foundation^T
Michele Gillett and Simonie Woerfel
Hamill Family Foundation
David D. Hiller^T
Mr.^T and Mrs. Michael L. Keiser
Fay and Daniel Levin
Mr.^T and Mrs. John W. McCarter, Jr.
Mr. and Mrs. W. James McNerney, Jr.
Withrow W. Meeker
Jeanne M. and John W.^T Rowe
Tracey Shafroth and Michael Elam
Jai R. Shekhawat^T
Scott F. Turow and Adriane Glazier Turow
Mr. and Mrs. Howard A. Tyner
Kim^D and Miles^T White
Michael Wright

Amira Moultrie
Lisa Moultrie

Ivan Mutis
Shelley Finnigan

Susan M. Neill^E
Anonymous
- Alfred K. Newton, PhD**
Margaret K. Thayer, PhD

Lisa C. Niziolek, PhD^E
Wenpeng Xu

Northern Trust
Brayton and Pim Alley

Deborah and Neil^T Novich
Mark Pinsky
Mr. and Mrs. Phillip C. Zarcone

John R. O’Connell^E
Larry Hodak

Ellen L. O’Connor
Robert and Loretta Cooney

Oliver
Anonymous
Cheryl and Michael Del Campo

Ortiz Builders Inc., MBE
John Sarlo

Asutosh Padhi^T
Ognjen Redzic
Jennifer L. Sherman^T

Walter Payton Rist O’Connor
Abigail L. Ristow^E

Angela Penchar
Janet Leon and Imad Makdah

James L. Phillips, PhD
Allegra E. Biery and Rene Cornejo
Linda and Jeffrey Graubart

Esperanza and Isabel Piechowski
Mr. and Mrs. James E. Piechowski

Judy Pigott
Mr. and Mrs. Robert Hermann

- Laura and John^T Podjasek**
Butler Family Foundation
Meredith Sullivan and Mark Sullivan

Lily Linda Przewoznik
Jane and Ronald Schwuchow

Hannah Przybylo
Dr. H.J. Przybylo

Christina Edwards
Anonymous

Ginevra Stirling Ranney^E
Elyse Litwack
The Stirling Charitable Fund

Izabella Redlinski^E
Amy Rosenthal^E and Jason Funk

Mae E. Riordan^E
Robert O’Connell
Tracey Riordan

Benjamin Rosenberg
Leona Z. Rosenberg

Deborah D. Ross
Mr. and Mrs. John E. Van Horn

Steven M. Ryan
Withrow W. Meeker

Hannah and Sid Samberg
Mark Samberg

Jessica^T and Steve Sarowitz
William S. Boyd
Josephine and Amado Gabriel Esteban
Christal M. Jackson

Lori Kleiman
Elyse Litwack
Doug and Ceci Marshall
- Alfred K. Newton, PhD**
Margaret K. Thayer, PhD

Lisa C. Niziolek, PhD^E
Wenpeng Xu

Northern Trust
Brayton and Pim Alley

Deborah and Neil^T Novich
Mark Pinsky
Mr. and Mrs. Phillip C. Zarcone

John R. O’Connell^E
Larry Hodak

Ellen L. O’Connor
Robert and Loretta Cooney

Oliver
Anonymous
Cheryl and Michael Del Campo

Ortiz Builders Inc., MBE
John Sarlo

Asutosh Padhi^T
Ognjen Redzic
Jennifer L. Sherman^T

Walter Payton Rist O’Connor
Abigail L. Ristow^E

Angela Penchar
Janet Leon and Imad Makdah

James L. Phillips, PhD
Allegra E. Biery and Rene Cornejo
Linda and Jeffrey Graubart

Esperanza and Isabel Piechowski
Mr. and Mrs. James E. Piechowski

Judy Pigott
Mr. and Mrs. Robert Hermann

- Laura and John^T Podjasek**
Butler Family Foundation
Meredith Sullivan and Mark Sullivan

Lily Linda Przewoznik
Jane and Ronald Schwuchow

Hannah Przybylo
Dr. H.J. Przybylo

Christina Edwards
Anonymous

Ginevra Stirling Ranney^E
Elyse Litwack
The Stirling Charitable Fund

Izabella Redlinski^E
Amy Rosenthal^E and Jason Funk

Mae E. Riordan^E
Robert O’Connell
Tracey Riordan

Benjamin Rosenberg
Leona Z. Rosenberg

Deborah D. Ross
Mr. and Mrs. John E. Van Horn

Steven M. Ryan
Withrow W. Meeker

Hannah and Sid Samberg
Mark Samberg

Jessica^T and Steve Sarowitz
William S. Boyd
Josephine and Amado Gabriel Esteban
Christal M. Jackson

Lori Kleiman
Elyse Litwack
Doug and Ceci Marshall
- Laura and John^T Podjasek**
Butler Family Foundation
Meredith Sullivan and Mark Sullivan

Lily Linda Przewoznik
Jane and Ronald Schwuchow

Hannah Przybylo
Dr. H.J. Przybylo

Christina Edwards
Anonymous

Ginevra Stirling Ranney^E
Elyse Litwack
The Stirling Charitable Fund

Izabella Redlinski^E
Amy Rosenthal^E and Jason Funk

Mae E. Riordan^E
Robert O’Connell
Tracey Riordan

Benjamin Rosenberg
Leona Z. Rosenberg

Deborah D. Ross
Mr. and Mrs. John E. Van Horn

Steven M. Ryan
Withrow W. Meeker

Hannah and Sid Samberg
Mark Samberg

Jessica^T and Steve Sarowitz
William S. Boyd
Josephine and Amado Gabriel Esteban
Christal M. Jackson

Lori Kleiman
Elyse Litwack
Doug and Ceci Marshall

- Laura and John^T Podjasek**
Butler Family Foundation
Meredith Sullivan and Mark Sullivan

Lily Linda Przewoznik
Jane and Ronald Schwuchow

Hannah Przybylo
Dr. H.J. Przybylo

Christina Edwards
Anonymous

Ginevra Stirling Ranney^E
Elyse Litwack
The Stirling Charitable Fund

Izabella Redlinski^E
Amy Rosenthal^E and Jason Funk

Mae E. Riordan^E
Robert O’Connell
Tracey Riordan

Benjamin Rosenberg
Leona Z. Rosenberg

Deborah D. Ross
Mr. and Mrs. John E. Van Horn

Steven M. Ryan
Withrow W. Meeker

Hannah and Sid Samberg
Mark Samberg

Jessica^T and Steve Sarowitz
William S. Boyd
Josephine and Amado Gabriel Esteban
Christal M. Jackson

Lori Kleiman
Elyse Litwack
Doug and Ceci Marshall
- Laura and John^T Podjasek**
Butler Family Foundation
Meredith Sullivan and Mark Sullivan

Lily Linda Przewoznik
Jane and Ronald Schwuchow

Hannah Przybylo
Dr. H.J. Przybylo

Christina Edwards
Anonymous

Ginevra Stirling Ranney^E
Elyse Litwack
The Stirling Charitable Fund

Izabella Redlinski^E
Amy Rosenthal^E and Jason Funk

Mae E. Riordan^E
Robert O’Connell
Tracey Riordan

Benjamin Rosenberg
Leona Z. Rosenberg

Deborah D. Ross
Mr. and Mrs. John E. Van Horn

Steven M. Ryan
Withrow W. Meeker

Hannah and Sid Samberg
Mark Samberg

Jessica^T and Steve Sarowitz
William S. Boyd
Josephine and Amado Gabriel Esteban
Christal M. Jackson

Lori Kleiman
Elyse Litwack
Doug and Ceci Marshall

- Laura and John^T Podjasek**
Butler Family Foundation
Meredith Sullivan and Mark Sullivan

Lily Linda Przewoznik
Jane and Ronald Schwuchow

Hannah Przybylo
Dr. H.J. Przybylo

Christina Edwards
Anonymous

Ginevra Stirling Ranney^E
Elyse Litwack
The Stirling Charitable Fund

Izabella Redlinski^E
Amy Rosenthal^E and Jason Funk

Mae E. Riordan^E
Robert O’Connell
Tracey Riordan

Benjamin Rosenberg
Leona Z. Rosenberg

Deborah D. Ross
Mr. and Mrs. John E. Van Horn

Steven M. Ryan
Withrow W. Meeker

Hannah and Sid Samberg
Mark Samberg

Jessica^T and Steve Sarowitz
William S. Boyd
Josephine and Amado Gabriel Esteban
Christal M. Jackson

Lori Kleiman
Elyse Litwack
Doug and Ceci Marshall
- Laura and John^T Podjasek**
Butler Family Foundation
Meredith Sullivan and Mark Sullivan

Lily Linda Przewoznik
Jane and Ronald Schwuchow

Hannah Przybylo
Dr. H.J. Przybylo

Christina Edwards
Anonymous

Ginevra Stirling Ranney^E
Elyse Litwack
The Stirling Charitable Fund

Izabella Redlinski^E
Amy Rosenthal^E and Jason Funk

Mae E. Riordan^E
Robert O’Connell
Tracey Riordan

Benjamin Rosenberg
Leona Z. Rosenberg

Deborah D. Ross
Mr. and Mrs. John E. Van Horn

Steven M. Ryan
Withrow W. Meeker

Hannah and Sid Samberg
Mark Samberg

Jessica^T and Steve Sarowitz
William S. Boyd
Josephine and Amado Gabriel Esteban
Christal M. Jackson

Lori Kleiman
Elyse Litwack
Doug and Ceci Marshall

- Laura and John^T Podjasek**
Butler Family Foundation
Meredith Sullivan and Mark Sullivan

Lily Linda Przewoznik
Jane and Ronald Schwuchow

Hannah Przybylo
Dr. H.J. Przybylo

Christina Edwards
Anonymous

Ginevra Stirling Ranney^E
Elyse Litwack
The Stirling Charitable Fund

Izabella Redlinski^E
Amy Rosenthal^E and Jason Funk

Mae E. Riordan^E
Robert O’Connell
Tracey Riordan

Benjamin Rosenberg
Leona Z. Rosenberg

Deborah D. Ross
Mr. and Mrs. John E. Van Horn

Steven M. Ryan
Withrow W. Meeker

Hannah and Sid Samberg
Mark Samberg

Jessica^T and Steve Sarowitz
William S. Boyd
Josephine and Amado Gabriel Esteban
Christal M. Jackson

Lori Kleiman
Elyse Litwack
Doug and Ceci Marshall
- Laura and John^T Podjasek**
Butler Family Foundation
Meredith Sullivan and Mark Sullivan

Lily Linda Przewoznik
Jane and Ronald Schwuchow

Hannah Przybylo
Dr. H.J. Przybylo

Christina Edwards
Anonymous

Ginevra Stirling Ranney^E
Elyse Litwack
The Stirling Charitable Fund

Izabella Redlinski^E
Amy Rosenthal^E and Jason Funk

Mae E. Riordan^E
Robert O’Connell
Tracey Riordan

Benjamin Rosenberg
Leona Z. Rosenberg

Deborah D. Ross
Mr. and Mrs. John E. Van Horn

Steven M. Ryan
Withrow W. Meeker

Hannah and Sid Samberg
Mark Samberg

Jessica^T and Steve Sarowitz
William S. Boyd
Josephine and Amado Gabriel Esteban
Christal M. Jackson

Lori Kleiman
Elyse Litwack
Doug and Ceci Marshall

HONOR ROLL

Elizabeth K. Brown	Janie P. Rempel	Miriam Futransky	Ruth W. Littman	Ralph and Bonnie Sassenger	Professors Julia and Johannes Weertman
Gloria Corey	Dayle Russell	Marci Bellows	The Littman Family	George B. Rabb, PhD	Mr. and Mrs. Buckley Crist, Jr.
Professor ^T and Lady Peter R. Crane	Cynthia Scalzo and Henry Brown	Courtney and Jason Burack	Foundation Inc.	Mr. and Mrs. Stephen Pruett-Jones	Julia A. Weertman and Nic Zerebny
Helene Ettelson	Mr. and Mrs. Scott Schreiber	Jeffrey Lerner	Hugo J. Melvoin	Miroslaw Romanowski	Ralph P. Young
Carole Feiger	Sirius Fund	Betty Sandlow	Melvoin Foundation	Sylvie Romanowski	Janice C. Young
Forest Investment	Mr. and Mrs. Charles Slattery	Marjie Sandlow	Beverly M. Meyer	Judith Sherry	
The Barry Friedberg and Charlotte Moss Family Foundation	James H. Stone	Terry Schmitt	Joyce E. Hecht	Mr. and Mrs. Gary Spencer	
Dr. and Mrs. Willard A. Fry	Herbert Wander	Helen C. Wilens	William C. Mitchell	Jay Savage	
Hannah Gacke	Arthur Winter	Debbie Giorno	Carolyn Mitchell	Mr. and Mrs. Duane E. Stout	
Hilary Gibbons	Edward F. Woods and Susan C. Spofford	Christopher Giorno	Nancy W. Nadler	Ellen Thorne Smith	
Jodi and David Gimbel	Yong Bum Park and Ik Whan Kim	Mary H. Goodrich	Charles F. Nadler, MD	Adele S. Simmons	
The Jastromb Family	Christine Kim and Tristan Schweiger	Vincent Guccione	Professor ^T and Lady Peter R. Crane	William T. Stanley, PhD	
Mary and Michael Jawor	Delano Busczynski	The Sparacio Family	John Nordloh	John Flynn and Alison L. Gold	
Linda Kellough	Linda J. Volino	Dato Robert F. Inger, PhD	Gretchen and Gregory Tieder	Kristen and Josh Jacobs	
L. Michael and Karen C. Kelly	Maria Mau	Stuart Turner	China I. Oughton	Mr. ^T and Mrs. Jeffrey B. Keller	
Robert P. Knight	William R. Darman	Grace Dodge Fuller Kirk	Anonymous	Melissa K. Lee	
Geraldine F. Martin	Richard Frank	Betty Dantonet Engelmann	Mr. and Mrs. Kim Drechsel	Sophia and Jonathan Twichell	
Jennifer L. Martin	Linda and Dale Williams	Marilyn R. Lind	Valerie and Edward Hatcher	Saroja Subramanian	
Clyde McGregor		Janet and David Carlson	Daniel R. Linden	Anonymous	
Withrow W. Meeker		Mr. and Mrs. Ron Harry	Peoples National Bank of Kewanee	Lynn Svoboda	
Kimberly Querrey and Louis Allen Simpson		The Sparacio Family		Lynn and Wayne Svoboda	

^TTrustee ^DDeceased ^EEmployee

PHOTO CREDITS

Cover: Field Museum, artwork by Blue Rhino Studio. Richard W. Lariviere and Wilbur H. Gantz III – John Weinstein. **Discovery:** Migratory Birds – GN92092_010d / John Weinstein; Galagadon tooth – Terry Gates (*Journal of Paleontology*); Galagadon rendering – Velizar Simeonovski; Crocodile skull – Caleb MacMahan; Philipp Heck and Terry and Evan Boudreaux – John Weinstein; El Palmillo – Linda M. Nicholas. Yuccas – Linda M. Nicholas; Andean Mountains – Bruce Patterson; Hummingbird – John Bates; Egg collection – Z95151_05Ad/ John Weinstein; Felix Grewe and Rick Ree – GN92235_060d / John Weinstein; Liverwort – Matt Von Konrat; Matt Von Konrat – Juan Lamin; Monarch Butterfly – Kelly Haffermann. **Impact:** Javier Maldonado – Jorge Enrique García Melo; Rapid Inventory 31 – Freddy Ferreyra; Gary Quality of Life summary – cover photo by Laura Milkert, design by Cassandra Kelsey; Climate Strike – Michelle Kuo; “West Bull No se” – Brad Temkin; Chicago Housing Authority planting – Laura Milkert; Norma Robertson – John Weinstein; Ojibwe bandolier bag, Michelle Brownlee; *Crown Family PlayLab* Pueblo – Kyle Flubacker Photography; Teen Volunteer Program – Field Museum, the Learning Center; Field Trip – Zach Johnston; *Fantastic Bug Encounters* – Kyle Flubacker Photography; *Wildlife Photographer of the Year* – Arshdeep Singh, India. **Honor Roll:** Members’ Nights dinosaur collection – Kyle Flubacker Photography; Members Nights shell – Kyle Flubacker Photography; 125th Anniversary Symposium – Kyle Flubacker Photography; Women In Science Luncheon – Kyle Flubacker Photography; Megan Hoffmann – Robert Carl; Evolve – Kyle Flubacker Photography; Parker/Gentry Award – Kyle Flubacker Photography; *Crown Family PlayLab* insect station – Kyle Flubacker Photography; Field Museum Dig Site – Field Museum; SUE suite – Martin Baumgaertner; SUE sense stations – Martin Baumgaertner; Byron G. Torke shells – Jochen Gerber; Children with Máximo – Lucy Hewett; Canada Jay – John James Audubon; Roseate Spoonbill – John James Audubon. **In Memoriam:** Judson Bergman – Evestnet; John H. Bryan – Family of John Bryan; Corlene Cathcart – Family of Corlene Cathcart; Robert Delaney, Sr. – Family of Robert Delaney, Sr.; Louis T. Delgado – Field Museum; James R. Donnelley – Family of James Donnelley; Joan P. McKenna – Family of Joan McKenna; Madhavan K. Nayar – Family of Madhavan Nayar; Edward J. Olsen – Family of Edward Olsen; Michael Spock – GN84360_12, Field Museum (Ron Testa); Dr. Johannes Weertman – Family of Johannes Weertman; Kimberly White – Family of Kimberly White.



(Left) A composite print of John J. Audubon's illustration of “Mountain Mocking Birds.”

Audubon’s *Birds of America*

In April 2019, the Museum brought its unique set of John James Audubon’s *Birds of America* down from the Marie Louise Rosenthal Library for a special exhibition. Gifted to the Museum in 1969 by Mary W. Runnells, the Field’s set of double elephant folio-sized prints is one of three for which 13 extra composite prints were prepared. These “overprintings”—created by placing new plates on top of old plates—corrected errors, oversights, and other issues that occurred during the book’s 12-year publishing enterprise from 1827-1838. The exhibition, which opened in the T. Kimball and Nancy N. Brooker Gallery, showed this incredibly rare gem from the Library’s collection, along with other works by Audubon.



(Left) John James Audubon’s *Birds of America* contains 435 renderings, including this “Roseate Spoonbill.”

PUBLISHER
Charles L. Katzenmeyer

EXECUTIVE EDITOR
Usha Subramanian

PROJECT MANAGER AND EDITOR
Chandler Garland

CONTRIBUTORS
Rachel Bailey
Katie Baltensperger
John Bates, PhD
Aimee Davis
Connie Eyer

Gary Feinman, PhD
Jochen Gerber
Anni Glissman
Kathyrn Harris
Philipp Heck, PhD
Maggie Holcomb
Janet Hong
Stephanie Hornbeck
Mark Johnston, PhD
Abigail Derby Lewis, PhD
Jenna Lieblch
Alex Lucio
Thorsten Lumbsch, PhD
Caleb McMahan, PhD

Catherine Miller
Anne M. Morgan
Marisa Moran
Susan Neill
Bruce D. Patterson, PhD
Nigel Pitman, PhD
Gretchen Rings
Amy Rosenthal
Heidi Rouleau
William Simpson
Maggie Schneiderman
Tom Skwerski
Steven Strohmeier
Annie Sullivan

Matt Von Konrat, PhD
Alaka Wali, PhD
Lauren Wagner
Ryan Williams, PhD
Lex Winter
Ellen Woodward
Michael Wren

DESIGNER
Bark Design, Chicago

PRINTER
The Fox Company,
Milwaukee, WI



Field Museum gratefully acknowledges the generous support it receives from the Chicago Park District, on behalf of the people of Chicago.



Official Airline of the Field Museum

© Field Museum, all rights reserved.

In Memoriam

Edward M. Bakwin
Edward “Pete” Bakwin was a member and supporter of the Museum for 50 years. A collector, he was interested in Oceanic art and anthropology. In addition to his consistent and generous support of the Field Museum, Bakwin was a donor to many of Chicago’s important cultural institutions including the Art Institute of Chicago, Chicago Symphony Orchestra, Brookfield Zoo, and the Museum of Science and Industry.

Judson Bergman (1) and Mary Miller Bergman
The Field Museum mourns the loss of Trustee Judson Bergman, 62, and his wife Mary Miller Bergman, 57. Mr. Bergman, Chairman and CEO of Envestnet, joined the Board of Trustees in 2017. He was a valued member of the Founders’ Council Chairman’s Circle and served on the Collections Committee of the Board. His good spirit and natural curiosity made him an ideal trustee leader and he was popular among his peers and Field Museum staff. A public memorial service was held at the Field Museum for Trustees and friends to remember Jud and Mary. The Field community extends condolences to the Bergman family and a dedicated community of colleagues at Envestnet.

John H. Bryan (2)
A member and friend of the Field Museum for more than 40 years, John Bryan was an extraordinary leader of Chicago’s cultural arts and architecture community. He was Chairman and CEO of Sara Lee from 1975 to 2001 and an expert fundraiser for several civic projects

including Millennium Park, the Art Institute’s Modern Wing, Symphony Center, and Lyric Opera. In his lifetime, he set an unparalleled example of civic and corporate leadership.

Corlene Cathcart (3)
Corlene Cathcart passed away on June 17, 2019. She and her late husband, Silas, were dedicated members of the philanthropic community in Chicago and Wyoming. Mrs. Cathcart was involved with many civic organizations in Chicago and served on the Women’s Boards of the Art Institute of Chicago, and the Ann and Robert H. Lurie Children’s Hospital of Chicago. She also had a passion for supporting conservation causes and Native North American studies. The Cathcarts were Field Museum members for 60 years and shared enthusiasm for the museum’s anthropology collections and conservation work.

Robert “Red” Delaney (4)
Field Museum Benefactor Robert “Red” Delaney, passed away on December 16, 2019 at age 94. He served as a Marine in the WWII Pacific Theater and was a graduate of Harvard University. Mr. Delaney worked for more than 50 years at McMaster-Carr Supply, a Chicago-based company. He and his late wife, Quinn Delaney, were steadfast contributors to Chicago cultural institutions, including the Art Institute of Chicago and Lyric Opera, in addition to the Field Museum where they were generous supporters for more than 45 years.

Gilbert Thomas Delahunty
Gilbert Delahunty and his late wife Mildred were passionate supporters of the Field Museum. Delahunty excelled as a docent and supported the Field through his philanthropy for more than 14 years. He served as a Trustee at Mount St. Mary College and volunteered in many organizations, including the Garden City Fire Department and the Amateur Astronomers Association of NYC. Through his personal gifts, he supported scientific research, educational programs, and exhibitions at the Field Museum.

Louis T. Delgado (5)
A member of the Field Museum’s Board of Trustees since 2006, Louis Delgado was an experienced philanthropist and grant maker, working as a program officer for the John D. and Catherine T. MacArthur Foundation. He often used his expertise to consult with non-profit organizations and was admired by his colleagues for his diplomacy. A highly respected leader in the Native American community of Chicago, Delgado served on the Field Museum’s Collections and Deaccession Committees, where he advised the Museum on important and sensitive repatriation issues. His expertise and passion will be greatly missed.

James R. Donnelley (6)
James Donnelley was a generous donor of the Field Museum for more than 50 years. Having had a distinguished career as a printing executive, Donnelley was enthusiastic about the Museum’s Marie Louise Rosenthal

Library. He was also a supporter and board member of several cultural, social, and educational organizations including Chicago Youth Centers, the National Merit Scholarship Corporation, and the Chicago Public Library Foundation.

Joan P. McKenna (7)
The Field Museum mourned the passing of Joan McKenna on July 22, 2019. She was an active member of the civic and philanthropic community in Chicago and Winnetka. She joined the Women’s Board in 1986 and served in leadership roles as a member of the Executive Committee, Co-Chair of the Centennial Ball, Co-Chair of the Bamboo Ball, and Chair of the Children’s Holiday Celebration. She and her spouse, Andrew J. McKenna, Sr., became members of the Founders’ Council in 1995 and were consistent and generous donors for more than 25 years.

Madhavan K. Nayar
In September 2019 the Field Museum lost a trustee, friend, and donor with the passing of Madhavan Nayar, 79. Mr. Nayar founded Unitech Systems (renamed Infogix, Inc.) in 1982 and under his leadership, it grew into a global leader in the field of Information Integrity. After a successful career, he focused his time and energy on his true passions: travel, photography, nature conservation, and philanthropy. A member of the Chairman’s Circle, Field Loyalty Club, and the Field Museum Research Committee, his curiosity and keen acumen strengthened the museum’s commitment to scientific discovery. He

also served on the Board of Directors for the Illinois Institute of Technology, Chicago Shakespeare Theatre, and The Morton Arboretum. The Field Museum extends heartfelt condolences to his wife Ruth, their children and grandchildren.

Edward J. Olsen (8)
The meteoritical community lost a remarkable scientist, mentor, colleague and friend with the passing of Edward Olsen on January 30, 2020. Olsen was Curator of Mineralogy and Meteorites at the Field Museum from 1960-1991. Gifted with a keen eye for the unusual, Olsen was the first to find and describe several new minerals from meteorites in collections kept at the Museum and universities. He participated in expeditions to Antarctica with international collaborators and remained an adjunct faculty member and exhibition consultant well after his retirement in 1991. Olsen lived a full life of scientific contributions and meaningful engagements with colleagues.

Michael Spock (9)
Public programs director at the Field Museum from 1986 to 1994, Michael Spock oversaw the redesign of several permanent exhibitions including *What is an Animal?*, *Africa*, *Inside Ancient Egypt*, and the *Regenstein Halls of the Pacific*. Previously, he was the Director of the Boston Children’s Museum, where he first began his career of reinventing museum visitor experiences. He also supported the Museum through his philanthropy as a donor to the Time Future campaign. Spock was a pioneer

in museum exhibition design, forever transforming the way audiences around the world interacted with museum collections and learning.

Dr. Johannes Weertman (10)
Johannes Weertman, PhD, Walter P. Murphy Professor Emeritus of Materials Science and Engineering at Northwestern University, passed away at age 93 on October 13, 2018. Both Dr. Weertman and his wife, the late Dr. Julia Weertman, were members of the Founder’s Council, Field Loyalty Club and Edward E. Ayer Society at the Field Museum. The Weertmans’ pioneering research contributions were honored by the United Kingdom Antarctic Place-names Committee, which established “Weertman Island” in 1960, a 3.5-mile-long island off of the Antarctic coast.

Kimberly White (11)
The Field Museum deeply felt the loss of Kim White, who passed away on January 31, 2020. A beloved leader in the Field Museum community, Mrs. White joined the Women’s Board in 1999 and served as its President and an Ex-Officio Trustee from 2012 to 2014. During her term as President, she brought new vision and purpose to the annual Gala and the Women in Science Luncheon. She advanced the Women’s Board’s outreach program with Chicago Public Schools and built collaborative relationships with her fellow Women’s Board Presidents throughout the city. As Field Museum Benefactors and Chairman’s Circle members, she and her husband Life Trustee Miles D. White made a lasting impact on the Museum.



Judson Bergman (1)



John H. Bryan (2)



Corlene Cathcart (3)



Robert “Red” Delaney (4)



Louis T. Delgado (5)



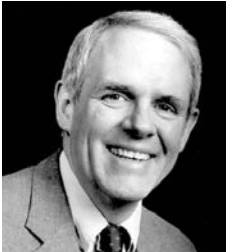
James R. Donnelley (6)



Joan P. McKenna (7)



Edward J. Olsen (8)



Michael Spock (9)



Dr. Johannes Weertman (10)



Kimberly White (11)

Thank you, Richard and Jan!

After eight years as President and CEO of the Field Museum, Richard W. Lariviere, PhD, will retire in August 2020.

His tenure saw a resurgence of the institution, which began with a strategic plan anticipating its 125th anniversary (2018-2019). He set the Museum on a path to financial sustainability, significantly growing the endowment through the \$250 million *Because Earth* campaign. And, he refocused the Field’s mission on scientific excellence, strengthening its reputation as a global force for change.

As part of the new Griffin Dinosaur Experience, the Field’s iconic Stanley Field Hall was transformed. The Museum relocated SUE to a major new exhibition suite; presented Máximo, the world’s largest dinosaur; and introduced hanging hydroponic gardens.

“Richard’s impact at the Field Museum will benefit Chicagoans and the global science community for decades to come,” says Wilbur H. Gantz III, Chairman, Board of Trustees.

Jan Lariviere, an accomplished science educator, advanced the Museum’s vision to be an accessible and inclusive place for all. As a docent and Women’s Board member, she led Museum tours for audiences with special abilities; assisted with science education for teachers in Chicago area schools; and introduced several civic groups to the Museum.

The Field Museum gratefully acknowledges Richard and Jan’s enduring contributions to the institution.



“The Field Museum community is a rare constellation of science and humanity. Your partnership anchors this dynamic institution and fuels journeys of discovery that enable solutions for a brighter future rich in nature and culture.”

Richard W. Lariviere, PhD
Field Museum President and CEO
2012–2020





FIE
LD.
MUSEUM

1400 S. Lake Shore Drive
Chicago, IL 60605
fieldmuseum.org