



FALL 2015

in the Field

THE FIELD MUSEUM MEMBER MAGAZINE



EDITOR

Franck Mercurio, mercurio-exhibits.com

PHOTO CONTENT SPECIALIST

Nina Cummings, *The Field Museum*

DESIGN

Georgia Bockos, *Bockos Design, Inc.*

All images © The Field Museum

unless otherwise specified.

IN THE FIELD (ISSN #1051-4546)

is published three times a year

by The Field Museum. Annual

subscriptions are \$20; \$10 for

schools. Museum membership

includes IN THE FIELD subscription.

Opinions expressed by authors are

their own and do not necessarily

reflect the policy of The Field Museum.

Notification of address change

should include address label and

should be sent to the membership

department.

POSTMASTER

Send address changes to:

Membership, The Field Museum

1400 South Lake Shore Drive

Chicago, IL 60605-2496



ON THE COVER

The Greeks—Agamemnon to Alexander the Great celebrates 5,000 years of Greek history and culture. Read more on page 4.

© ARCHAEOLOGICAL MUSEUM OF PELLA (R)

© MUSEUM OF THE ROYAL TOMBS OF

AIGAI, VERGINA (L)

The **Field**
Museum

1400 South Lake Shore Drive

Chicago, IL 60605-2496

312.922.9410

fieldmuseum.org

dear member

In our quest for knowledge, The Field builds partnerships with institutions and individuals around the world, bringing new discoveries and experiences to the communities we serve.

The National Hellenic Museum, located in the heart of Chicago's Greektown, is one of The Field Museum's newest partners. We are honored to collaborate with this distinguished institution in the co-presentation of *The Greeks—Agamemnon to Alexander the Great*, an exhibition exploring 5,000 years of Greek history and culture, opening at The Field on November 25. I encourage you to visit the National Hellenic Museum to enjoy companion programming and related exhibitions for *The Greeks*.

With deep gratitude, we recognize John P. Calamos, Sr., and the directors of the Calamos Foundation for their leadership on behalf of the exhibition. Mr. Calamos is the founder, Chairman, and CEO of Calamos Investments, a global asset management firm established in 1977 and headquartered in Naperville. He is also a generous philanthropist and serves as a trustee of the Illinois Institute of Technology and Chairman of the National Hellenic Museum. It is a special privilege to work with John Calamos and advance the missions of two great museums.

Support from Field Museum members makes partnerships such as this one possible. Your generosity helps to promote

scientific research and preserve culture as it builds bridges between like-minded institutions.

Thank you.

RICHARD W. LARIVIERE, PHD

PRESIDENT AND CEO



GN01656_027D / JOHN WEINSTEIN

In addition to *The Greeks—Agamemnon to Alexander the Great* (see page 4),

The Field Museum presents the following special exhibitions this fall.

New This Fall: Exhibitions at The Field

CITY WINDOWS

Now open!

Using the traditional Chinese art of paper cutting, artist and professor Qiao Xiaoguang created panoramic images of Chicago and Beijing for the United Airlines concourse at O'Hare International Airport. One group depicts iconic Chicago landmarks such as Navy Pier and the Willis Tower,



JEN BUCKLER, MAYARI, 2013.

ART AND ANTHROPOLOGY: PORTRAIT OF THE OBJECT AS FILIPINO

Opens October 30

In its commitment to global heritage and the practice of co-curation, The Field Museum has partnered with the Erehwon Center for the Arts in Manila to present the work of five Filipino American artists and five Philippines-based artists. Inspired by ethnographic objects from the Philippines, the artists created original pieces in addition to a collaborative, large-scale mural installed outside The Field's Maori Meeting House. (See story on page 8.)

MAMMOTHS AND MASTODONS

Extended through January 3, 2016!

Journey back in time tens of thousands of years to when mammoths and mastodons roamed the Earth. Joust with mammoth tusks; touch colossal mastodon teeth; confront their fierce neighbors, including giant bears and saber-toothed cats. Discover ancient cave paintings and learn why early humans both hunted and honored these majestic animals. Walk among these larger-than-life creatures in the most captivating exhibition since the Ice Age. **ITF**

VELIZAR SIMEONOVSKI / THE FIELD MUSEUM



© QIAO XIAOQUANG / PHOTO COURTESY CAO LIANG

while the other depicts famous Beijing sites such as the Forbidden City and the "Bird's Nest" Olympic stadium. The Field presents the original paper cuts, which were reproduced and enlarged for the O'Hare installation. See this amazing exhibition located outside the recently opened *Cyrus Tang Hall of China*.

Support for the City Windows exhibition at The Field Museum was provided by MACLEAN-FOGG and Wanxiang America, Inc.

MESOPOTAMIAN ARTIFACTS FROM KISH

Now open!

Since January of this year, insurgent militants calling themselves the "Islamic State" have destroyed irreplaceable antiquities at museums and archaeological sites in Iraq, the region known historically as Mesopotamia.

As the birthplace of some of the world's earliest cities, Iraq's cultural heritage is an important part of global cultural history. To raise awareness of the destruction of this legacy, The Field is displaying a selection of Mesopotamian objects from its own collections, excavated at the city of Kish and other sites between 1923 and 1932.

A114645D_06A / JOHN WEINSTEIN



**DRAWING FROM THE COLLECTIONS OF MORE THAN 20 MUSEUMS
THROUGHOUT GREECE, THE GREEKS—AGAMEMNON TO ALEXANDER THE GREAT
IS THE LARGEST EXHIBITION OF ITS KIND TO TOUR NORTH AMERICA**



IN A GENERATION. Spanning 5,000 years of history, the exhibition presents the story of Greek culture from its origins in Neolithic villages through its expansion during the conquests of Alexander the Great—all told from the perspectives of people from Greece's ancient past.

MEET THE ANCIENT GREEKS

By Franck Mercurio, Editor



"We are honored to be able to present such an important exhibition that shows the emergence of Greek culture from its roots in early agricultural villages of the Neolithic to the imperial expansion of Alexander," says Field Museum President Richard W. Lariviere.

"This exhibition gives the visitor an opportunity to see the evolution not only of art, but also of Greek culture, politics, and economics over the long-term."

The exhibition in Chicago is the result of a first-of-its-kind partnership between The Field Museum and the National Hellenic Museum. In addition to *The Greeks* at The Field, the National Hellenic Museum will host related programming in its Greektown home.

"The National Hellenic Museum is pleased to co-present *The Greeks* and share the wisdom and beauty of ancient Greece," said John P. Calamos, Sr., Chairman of the Board at the National Hellenic Museum and CEO of Calamos Investments.

"We welcome everyone to also experience the National Hellenic Museum's companion programs, which illustrate the enduring value and modern-day embodiment of the concepts, ideas, and institutions created in ancient Greece."

IMAGES: © NATIONAL ARCHAEOLOGICAL MUSEUM, ATHENS (UNLESS OTHERWISE NOTED); © ARCHAEOLOGICAL MUSEUM OF DELOS (CLAY VASE, PICTURED LEFT); © ARCHAEOLOGICAL MUSEUM OF PELLA (ALEXANDER SCULPTURE, LEFT ON OPPOSITE PAGE)



ALEPOTRYPA

Exhibiting Neolithic Greece

Located 165 miles southwest of Athens on Greece's Mani peninsula, the Alepotrypa cave complex is known as "the Greek Pompeii." Five thousand years ago, an earthquake sealed the entrance to the cave, trapping its human occupants and preserving their remains. The site remained undisturbed until 1958 when locals accidentally re-discovered the cave. Excavations since the 1970s have given archaeologists an unrivaled picture of life in the late Neolithic period when people began to gather into larger, more complex, agricultural communities in Greece.

Field Museum Associate Curator William Parkinson, PhD, excavates at Alepotrypa along with colleagues Giorgos Papathanassopoulos, PhD, Anastasia Papathanasiou, PhD (Greek Ministry of Culture), and Michael Galaty, PhD (Millsaps College). Together, the four lead the Diros Project, an international, multi-disciplinary, research project that examines Alepotrypa and the cultural change that occurred there during the Neolithic period.

The Field Museum is organizing a special exhibition about the Diros Project and discoveries at Alepotrypa. Opening November 25, the exhibition will serve as a prelude to *The Greeks—Agamemnon to Alexander the Great* and provide a look at the evolution of early communities in Greece through photographs, video presentations, audio interviews, and a scale model of the Alepotrypa cave complex.



Woven throughout *The Greeks* are the inventions, innovations, and institutions that provided the foundation for much of Western culture. Scholars trace the origins of modern democracy, the Olympic movement, and Western philosophy, poetry, and theater back to the Greek past. Even The Field Museum's architectural style owes a large debt to the mathematicians, builders, and sculptors of ancient Greece. They first devised the system of architecture we call "Classical," handed down to us from antiquity via successive generations of architects, from Phidias to Daniel Burnham.

The cultural achievements of the ancient Greeks live on in all of us today. Visit *The Greeks* at The Field Museum from November 25 through April 10, 2016, and be inspired by this amazing legacy. **ITF**

To reserve member tickets, call 312.665.7705 or visit fieldmuseum.org/support/members/reserve-tickets.

The exhibition contains more than 500 magnificent artifacts, many of which have never been displayed outside of Greece. Show-stopping examples include enigmatic stone figurines from the Cycladic Islands, gold funerary masks from Bronze Age rulers, classical marble statues of Greek poets, athletes, and heroes, and even a diadem and leg armor associated with Phillip II of Macedon, father of Alexander the Great, who unified Greece.

But the objects tell only part of the story. The exhibition is presented largely through the lens of the ancient Greeks themselves. Some figures are well known to us today—Homer, Agamemnon, Pericles, and Alexander—their achievements recorded in epic poems, historical writings, and

mythological stories. But most of the people featured in the exhibition remain unnamed and are known only through the archaeological record: a priestess of Mycenae, a warrior of the Iron Age, two noblewomen of the Archaic period, and an athlete of the Classical era. The exhibition provides insight into their lives and their societal roles.



The National Hellenic Museum is hosting a robust series of programs to complement *The Greeks*. Lectures, musical performances, staged readings, family programs, and other happenings will bring people together at the NHM to celebrate the traditions of Greece and its people. To confirm events, dates, and times, visit www.nationalhellenicmuseum.org. See page 17 for reciprocal membership benefits.



An exhibition developed by the Hellenic Ministry of Culture, Education and Religious Affairs (Athens, Greece), The Field Museum (Chicago, USA), the National Geographic Museum (Washington, DC, USA), Pointe-à-Callière, Montréal Archaeology and History Complex (Montréal, Canada), and the Canadian Museum of History (Gatineau, Canada).

The exhibition is co-presented in Chicago by The Field Museum and National Hellenic Museum.

Supporting The Field: Gantz Family Collections Center

By Lora Nickels, Leadership Giving Officer

IN 2014 TRUSTEE BILL GANTZ AND HIS WIFE, LINDA, ALONG WITH THEIR FAMILY, ANNOUNCED A COMMITMENT OF \$10 MILLION TO SUPPORT THE MUSEUM'S ENDOWMENT.

Their generosity is honored in the newly named Gantz Family Collections Center. A passionate team of people supports the Center; they are dedicated to the strategic growth, preservation, and utilization of one of the world's most diverse and important collections, including 27 million specimens and objects.



GN91655_307D / JOHN WEINSTEIN

Bill Gantz sat down with *In The Field* to discuss his family's generous support of the Museum.

ITF: *Why did your family choose to support The Field Museum?*

Gantz: The Field Museum is a jewel of Chicago and home to one of the most important biological and cultural collections in existence. Through my work as a trustee, Linda and I have come to appreciate its breadth and excellence. We are proud to be associated with this institution and see its work ensured in the future.

ITF: *The Field Museum is recognizing your generous support by naming the Gantz Family Collections Center. Why was this meaningful to you?*

Gantz: When I tour the collections behind the scenes with my grandchildren, I often wonder what questions scientists will ask in the future and what technologies they will have available. Each specimen is a resource that enhances our ability to investigate the most important challenges facing humanity. I want to ensure those specimens are available to scientists when my grandchildren's grandchildren visit The Field Museum many decades from now. We know our gift will have a broad impact on the work of documenting the diversity of life on Earth.

ITF: *What do you hope your gift will accomplish?*

Gantz: Our gift is one of endowment. It will sustain the Museum financially, providing for scientific discovery in perpetuity. As The Field Museum embarks on an ambitious campaign, I hope our gift will be a vote of confidence in this effort and will encourage others to consider philanthropic support. **ITF**



Z94186_5C / JOHN WEINSTEIN

The Gantz Family Collections Center houses a variety of objects, from anthropological artifacts to aquatic specimens. Linda and Bill Gantz are pictured at right.



GN92130_010AD / JOHN WEINSTEIN

Charting the Evolution of Pathogens

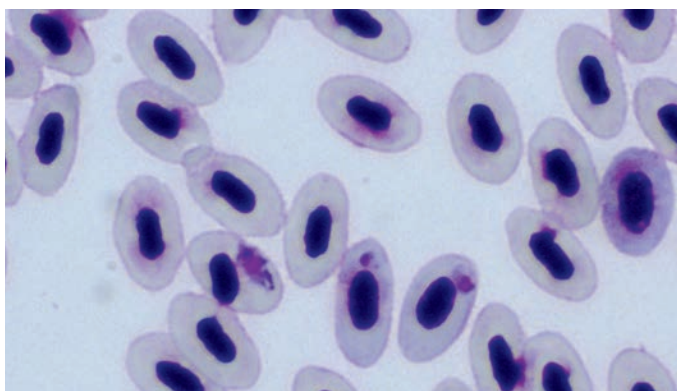
By Christine Thom, Science Writer

SCIENTISTS DEFINE PATHOGENS AS BACTERIA, VIRUSES, OR OTHER MICROORGANISMS THAT CAN CAUSE DISEASE.

To understand them, we have to understand how they have evolved. When and why do they switch from one host to another? And do environmental conditions play a part in this switch? Researchers at The Field Museum's Emerging Pathogens Project (EPP) seek answers to these questions by concentrating on the natural history of pathogens.

"The focus of The Field, and of any [natural history] museum, is the inventory of biodiversity," says Shannon Hackett, PhD, associate curator of birds and director of the Emerging Pathogens Project.

So, to better understand the biodiversity of pathogens, the EPP collects comprehensive data in search of the origins, evolution, and natural history of these organisms. In the field, researchers take samples from all the birds, rodents, and bats found within an area. Everything is examined, collected, and preserved, including body tissues, organs, blood, and swabs from inside mouths and digestive tracts. Each specimen is viewed as an entire ecosystem in and of itself; and every organism, from bugs to bacteria, found on or inside the specimen is also collected and studied.

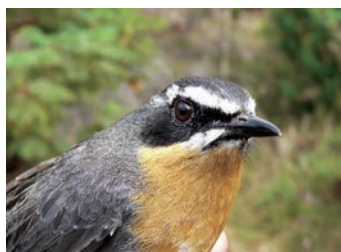


JACOB MERITES, UNIVERSITY OF NORTH DAKOTA

Malaria provides a good example of the EPP's ongoing research. In an effort to uncover its natural history, Holly Lutz, a graduate research fellow at The Field, tested birds the team collected in Malawi, Africa, discovering that 80 percent were infected with several strains of malaria, including *Plasmodium relictum* (pictured above), which is responsible for the extinction of multiple bird species in the Hawaiian Islands. Yet, the African birds are healthy. How have they, and the malaria parasites, adapted and evolved? To answer these questions, Lutz is currently studying the genomes of malaria parasites.



VASYL TKACH



JASON WECKSTEIN



JASON WECKSTEIN

Clockwise from above:
Violet-backed Starling (*Cinnyricinclus leucogaster*)
Cape Robin-Chat (*Cossypha caffra*)
Chinspot Batis (*Batis molitor*)

The EPP collaborates with over 20 organizations including the University of Chicago's Institute for Genomics and Systems Biology, the Museums of Malawi, and the CDC. Their collective work brings us closer to understanding pathogens and their natural history. **ITF**

The Emerging Pathogens Project is supported by a major grant from the Davee Foundation and The Dr. Ralph and Marian Falk Medical Research Trust.

LEARN MORE!

Support from members like you help make the Emerging Pathogens Project possible. Thank you. For more information about Hackett's and Lutz's work and to make a gift online, visit fieldmuseum.org/FallAF.

Art and Anthropology: Portrait of the Object as Filipino

By Almira Astudillo Gilles, PhD, Project Director and Research Associate

THE FIELD MUSEUM HAS MORE THAN 10,000 ETHNOGRAPHIC OBJECTS FROM THE PHILIPPINES, ONE OF THE LARGEST SUCH COLLECTIONS OUTSIDE THE ARCHIPELAGO. Anthropologists Stephen Chapman Simms, William Jones, Fay-Cooper Cole and Cole’s wife, Mabel Cook Cole, collected most of these artifacts between 1907 and 1910 on Museum expeditions funded by Chicago industrialist Robert Fowler Cumming.



JEAN LACHAT

The Field plans to highlight its Philippine collection and strong ties to the local Filipino community with *Art and Anthropology: Portrait of the Object as Filipino*. Opening October 30, the exhibition exemplifies Regenstein Curator of Pacific Collections John Terrell’s concept of co-curation and the Museum’s commitment to authentic presentations of global heritage.

The project is a partnership between The Field and the Erehwon Center for the Arts in Manila. A selection panel from each country chose five Filipino American artists from Chicago and five Philippines-based artists to create individual works of art inspired by ethnographic objects. The objects came from the collections of The Field Museum, the National Museum of the Philippines, and the Ayala Museum (Makita City, Philippines).

At the Ayala Museum, artists chose from a collection of more than one thousand gold objects produced in the 16th century, before Spanish colonization. These artifacts, along with 10th–13th century Chinese ceramics also exhibited at the Ayala Museum, affirm the historical role the Philippines played in regional trade. Similar porcelain tradeware is also part of The Field Museum’s Philippine collection and can be seen in the recently opened *Cyrus Tang Hall of China*.

In addition to exhibiting their individual pieces, all ten artists will collaborate to create two murals: one to be displayed at The Field and the other to be displayed at the Erehwon Center for the Arts.

Anthropological research and art-making both start with the premise that the “cultural archive” of an object—its history and meaning—is incomplete. This collaboration between The Field Museum and its Philippine partners allows the reconstruction of new meaning and representation of ethnographic objects through the creation of contemporary artwork. **ITF**

Support for *Art and Anthropology: Portrait of the Object as Filipino* comes from the John D. and Catherine T. MacArthur Foundation.

A113481C / JOHN WEINSTEIN (RIGHT)



JEAN LACHAT

The exhibition’s featured Filipino American artists are (from left to right) Jen Buckler, Joel Javier, Elisa Boughner, Cesar Conde, and Trisha Martin.



Documenting and Conserving Biodiversity in the Philippines

By Lawrence R. Heaney, PhD, Negaunee Curator of Mammals and Danilo S. Balete, MS, Research Associate in Mammals

OCEANIC ISLANDS AROUND THE WORLD ARE KNOWN FOR THEIR UNIQUE BIODIVERSITY; the Galapagos and Madagascar come immediately to mind. Yet the Philippine archipelago holds more unique species than either of these, but is less well known to the public and scientists. This lack of recognition is critical, because the

Philippines is exceptional both for its biodiversity *and* its level of deforestation—only about eight percent of the original rainforest remains. With a human population over 105 million in an area the size of Arizona, the need for effective conservation is acute.

For decades, our team has responded by conducting detailed field surveys of mammals, coupled with equally intensive study of specimens in the Museum. Our formal descriptions of over 35 previously unknown species of mammals has sparked the creation or expansion of over a dozen parks throughout the country, especially on Luzon Island.

We recently shifted focus to Mindoro Island, where severe over-logging, a rapidly expanding human population, and poorly managed agriculture have reduced the original forest cover on the island by about 95 percent. Last March we spent three days hiking through a mountain range on 45-degree slopes looking for forest patches, but found little other than banana plantations (tough, starchy, little bananas used to make banana chips).

Yet, despite habitat destruction, much reason for hope remains. On Mindoro, our team has gathered the first data on ecology, distribution, and abundance of such spectacular endemic species as the stripe-faced flying fox, discovered seven species of small mammals new to science, and increased the number of known bat species by 20 percent. With protection of the entire biota and critical watersheds as goals, we collaborate with the Philippine Protected Areas and Wildlife Bureau and several national-level conservation organizations to improve management and develop plans for expansion of the existing national park system on Mindoro, and we are producing colorful posters to educate the public, especially children. Creating a sense of wonder and pride is often the first and most important step in promoting conservation. **ITF**

This project has received generous support from the National Geographic Society, The Negaunee Foundation, and the Brown Fund for Mammal Research.



Clockwise from above:

*The Mindoro stripe-faced flying fox (*Styloctenium mindornensis*) is a fruit bat with a 2½ foot wingspan.*

Mt. Halcon is the highest and most heavily forested mountain on Mindoro, but receives no legal protection at this time.

*This spiny tree mouse (*Anonymomys mindorensis*) lives only in the rapidly disappearing forest on Mindoro.*

PHOTOS (TOP OF PAGE):
DANILO S. BALETE

FIELD GUIDES

IDENTIFYING FLORA AND FAUNA, NEAR AND FAR

By Nigel Pitman, PhD, Mellon Senior Conservation Ecologist

WE SHARE THIS PLANET WITH 8 MILLION OTHER SPECIES, AND KEEPING TRACK OF THEM ALL CAN BE A CHALLENGE. BUT NO MATTER WHERE YOU ARE ON EARTH, THE FIELD MUSEUM CAN HELP, BECAUSE WE RUN THE WORLD'S LARGEST CLEARINGHOUSE OF FIELD GUIDES.

At our web page (fieldguides.fieldmuseum.org) you can browse and download field guides from 32 countries, covering everything from spiders of Chicago to orchids of Brazil to mushrooms of China to chameleons of Tanzania. Pioneered in the 1990s by Museum botanist Robin Foster, PhD, to help people identify plants in tropical forests where identification tools are scarce, these lightweight photo guides have proven so popular that today experts and students around the world download, print, and laminate dozens each year.

For the last 15 years, a dedicated team at The Field has worked to create these guides. This year we're celebrating the 600th field guide posted to the Museum's website—where every year people download more than 200,000 copies!

Field guides matter because identifying species is a prerequisite for engaging with the natural world—whether it's for research, conservation, or just nature-watching. That's true in indigenous communities, where field guides can help maintain centuries-old knowledge about plants and animals traditionally used for survival. And it's true in big cities like Chicago, where field guides play a key role in putting people back in touch with nature.

So—what's in your backpack? **ITF**



ALVARO DEL CAMPO



FEDERICO PARDO



fieldguides.fieldmuseum.org

IDES



SELECTED FIELD GUIDE TITLES

- **Woodland Spring Flora of the Chicago Region**

Authors: John and Jane Balaban, Becky Collings

A perennial springtime favorite, with wildflowers arranged from the earliest to the latest bloomers.

- **Conspicuous Plants of Zabalo, Ecuador**

Authors: Roberto Aguinda, Lorenzo Criollo, Robin Foster, Margaret Metz

The first field guide in the series, and one of a series of guides made in collaboration with the Cofan indigenous group, combining scientific names and Cofan common names.

- **Common Butterflies of the Chicago Region**

Authors: Jim Boone and Cassie Kelsey

The Field Museum collaborated with the Illinois Butterfly Monitoring Network and Chicago Wilderness to create this guide to local butterflies.

- **Fruits and Flowers Eaten by the Black-bearded Saki Monkey (*Chiropotes satanas*)**

Author: Liza Maria Veiga

A number of guides like this one are designed to help wildlife biologists identify the fruits and seeds that animals eat.

- **Chameleons of Amani Nature Reserve, Tanzania**

Author: Philip L. Shirk

This guide documents twenty different species of chameleons living in the tropical forests of Tanzania's spectacular Amani Nature Reserve.

- **Common Oaks of the Chicago Region**

Authors: Kathryn Stiver Corio and Becky Collings

A field guide to nine species of the dominant tree genus of the Chicago region.

15 YEARS
32 COUNTRIES
600 GUIDES

UNLESS OTHERWISE NOTED, ALL IMAGES COURTESY KELLER SCIENCE ACTION CENTER / THE FIELD MUSEUM.



© PHILIP SHIRK



Mapping History: Survey Archaeology in China

By Sarah Sargent, Exhibition Developer

INSIDE THE CYRUS TANG HALL OF CHINA, A DIORAMA OF AN ARCHAEOLOGICAL EXCAVATION SITS ALONGSIDE a diorama of a Neolithic village. The message: archaeological excavation provides clues as to how people lived during a particular time at a specific site. But another method of archaeology—survey archaeology—provides the context of the ebb and flow of people within a given region.



Led by Field Museum Curator Gary Feinman, PhD, and Fang Hui, PhD (Shandong University), teams of survey archaeologists walk the landscape in China's Shandong region seeking physical evidence from the late Neolithic period through China's first dynasties. They look for potsherds and other small artifacts turned up by agriculture and construction. Adjunct Curator Linda Nichols plots each find on a map. An expert team then dates each of the finds, and the resulting maps build a picture of population centers over space and time.

Survey archaeology can augment historical records. More than a century after the unification of China (circa 221 BC), a court historian named Sima Qian wrote that the First Emperor had moved 30,000 families to the Shandong region to consolidate his power there. The Field Museum—Shandong University survey team uncovered physical evidence of this historical account and recorded a significant uptick in population density around and just after the time of the First Emperor's rule.

In March 2016, The Field Museum will present an exhibition on China's celebrated terracotta warriors, highlighting the First Emperor's rule and famous tomb site. The Great Wall has long been recognized as one of the First Emperor's signature achievements; his laborers linked together earlier walls built for defense by smaller states. Feinman's team recorded the first detailed map of a long segment of one of these earlier walls built by the state of Qi to protect its southern border centuries before the First Emperor.

Look for the latest results of Feinman's research this spring in *Terracotta Warriors* and see how archaeology brings history to life. **ITF**

The Cyrus Tang Hall of China is made possible with the generous support of the Cyrus Chung Ying Tang Foundation.

Additional support provided by the William G. McGowan Charitable Fund in memory of Sue Ling Gin-McGowan.

Education and Community Partner:



For more information about the exhibition, visit fieldmuseum.org/china

OPEN FIELDS

EXPLORING NEW WAYS TO CURATE

By Franck Mercurio, Editor

IN HER ROLE AS CURATOR OF THE NORTH AMERICAN ANTHROPOLOGY COLLECTIONS, ALAKA WALI, PHD, has taken a different approach in organizing some recent exhibitions. In *Fashion and The Field Museum Collection: Maria Pinto and Bunky Echo-Hawk: Modern Warrior*, Wali collaborated with the two namesake artists to showcase anthropological objects in new ways. In both shows, Pinto and Echo-Hawk drew inspiration from the collections, juxtaposed historic artifacts with contemporary works, and enabled visitors to see Museum objects in a different light.

This shift away from traditional artifact exhibitions reflects the changing relationships between museums and the communities they serve, including Native American communities. In this context, Wali recently teamed up with University of Chicago professors Justin Richland, PhD, JD, and Jessica Stockholder, MFA (Chair of the Department of Visual Arts), and Jason Bartulis (PhD candidate in Religious Studies) to create “Open Fields.”

“Open Fields is about where we take this relationship in the future,” explains Wali. “How can we work with communities to bring a different voice or perspective to Museum visitors?”

The Open Fields project will pull together artistic, legal, and anthropological perspectives to examine the question: “What is the role of ethnographic collections and natural history museums in the 21st century?” It will include lectures and symposia exploring this topic with a focus on the ways contemporary Native American artists and community leaders engage with different parts of The Field Museum’s North American collections. The goal is to create opportunities for conversation and reflection and develop new practices in curating exhibitions collaboratively.

Wali is currently planning upcoming exhibitions of contemporary Native American art that will benefit from the dialogues, including one featuring the work of Rhonda Holy Bear (Cheyenne River Sioux). **ITF**

Open Fields is funded by a grant from the Neubauer Collegium for Culture and Society at the University of Chicago.



GN91914_031D / KAREN BEAN

“How can we work with communities to bring a different voice or perspective to Museum visitors?”

PARTNERING TO IMPROVE SCIENCE LEARNING IN THE CLASSROOM

By Heidi Rouleau, School Learning Experiences Manager



“I was very pleased with today’s meeting. We had ample time for reflection and discussion. I now have a clear expectation of what is required of me as a teacher leader for science.

I look forward to growing in my own practice and helping my peers develop in their practice.”

– E2SP Teacher Leader



“The strengths of this workshop are the on-going plans that will help support the science standards we use in our school, as well as the opportunity to collaborate with other educators.”

– E2SP Teacher Leader

THIS SCHOOL YEAR, THE FIELD MUSEUM PARTNERED WITH THE Big Shoulders Fund, the Peggy Notebaert Nature Museum, and Northwestern University to form the Early Elementary Science Partnership (E2SP). Built on an earlier pilot program, E2SP represents a collaborative approach to improve science instruction in the classroom by partnering museums and universities with elementary schools and teachers.

Serving Chicago’s neediest students enrolled in inner-city Catholic schools, the Big Shoulders Fund provides programmatic support to E2SP. The Big Shoulders Fund also supports scholarships, instructional equipment, and special education and academic programs.

Through this four-year initiative, the partnership aims to transform teaching and learning in pre-K through third-grade classrooms in ten schools throughout Chicago. E2SP seeks to achieve this by establishing a science leadership team and professional learning community of teachers at each school dedicated to strengthening science instruction. Guided by Next Generation Science Standards (NGSS), the team will enhance teachers’ instructional skills and connect science learning in classrooms with museum and university resources.

The goal is to improve students’ understanding of and ability to do science during the four-year program and after it concludes.

E2SP partners work intensively with 10 principals and 55 teachers, giving them multiple supports, including leadership team and teacher professional development workshops, one-on-one instructional coaching, school-based science collaborations, and annual field trips to both The Field Museum and the Peggy Notebaert Nature Museum—serving over 1,000 students each year. **ITF**

E2SP is supported by John and Rita Canning and Quest Foundation.



Students to the Rescue: Rediscovering the Kirk Collection

By Christine Niezgodą, Collections Manager, Flowering Plants, with Mark Alvey, Science Communications Manager

A SERENDIPITOUS FIND IN LATE 2012 BY PETER DE LANGE, PHD, a botanist at the New Zealand Department of Conservation, led to an exciting and productive week for several Chicago high school students. Traveling to Chicago for a Museum-sponsored conference, de Lange spent a few spare hours looking for rare New Zealand flowering plants in the Museum's John G. Searle Herbarium. He was excited to discover an extinct species of *Lepidium obtusatum* collected by Thomas Kirk around 1870.



PHOTOS: DANIEL LE / THE FIELD MUSEUM

“What I enjoyed most about our work at The Field Museum was looking at all of the old specimens and allowing them to drive my imagination to determine why this plant was picked, what it looked like, and where it may end up after it leaves my hands.”

— Sophia Lancaster, Student Volunteer

An English-born botanist, Kirk immigrated to New Zealand in 1863. Soon after his arrival, he began his botanical collecting, participating in a number of expeditions throughout New Zealand. Upon his death the eminent British botanist J. D. Hooker wrote: “This is a great loss to Botany, for indeed, except for the late Baron von Mueller, there was no other cultivator of Botany in the Southern Hemisphere who could compare with him.”

The University of Chicago acquired Kirk’s botanical collection and transferred more than 1,200 specimens to The Field’s herbarium in 1932. The possibility of locating and imaging Kirk’s collections in “Herbarium F” (as the botanical world refers to The Field Museum collection) was an exciting prospect for a collaborative effort with de Lange. But lack of time and staff put the project on hold—until last spring when eight students from the Latin School targeted the Kirk material as part of their annual Project Week.

The class—with teachers Geraldine Schmadeke and Amy Merrell—diligently combed the entire Museum herbarium looking for the yellow folders that denote Australasian collections, and within those, targeted the distinctive Kirk labels, ultimately finding more than 800 of his specimens.

The sheets were imaged under the supervision of Daniel Le, locality data deciphered (thanks to smart phones and Google!) and then geographically sorted. Future work involves creating a database, finding any missing herbarium sheets, and collaborating with de Lange on updating taxonomic names. **ITF**



©ISTOCK.COM/ERICHIROTA

Coming soon! Terracotta Warriors

By Sarah Sargent, Exhibition Developer

In 221 BC, the First Emperor, Qin Shi Huang, united China. The discovery of the army of terracotta warriors guarding his tomb was one of the greatest archaeological finds of the 20th century. On March 4, 2016, The Field Museum will unveil *China's First Emperor and his Terracotta Warriors*, offering a glimpse of the man who changed the course of history and world he encountered. Terracotta warriors and attendants from the Emperor's tomb site, grave goods from some of the most powerful nobles in the region, and archaeological finds will offer a picture of daily life, war, and power at a turning point in history. **ITF**



LEED GOLD CERTIFICATION

The Field Museum has been practicing sustainable building operations for over 20 years, pursuing energy efficiency, renewable energy, water conservation, green cleaning and purchasing initiatives as a part of its normal operations. Now these efforts are being recognized by the US Green Building Council's LEED (Leadership in Energy & Environmental Design) certification program.

After achieving LEED Interior Design & Construction certification for the 3D Theater sponsored by Ernst & Young LLP and the Abbott Hall of Conservation *Restoring Earth*, Museum leadership registered the entire institution for LEED Existing Buildings: Operations & Maintenance in 2013. Conducting energy audits and scouring its operations with a fine-toothed comb, new efficiency measures were implemented immediately. The Museum passed its 2014 performance period with flying colors, receiving LEED Gold certification in April 2015. The Field Museum will continue pursuing projects identified during the LEED process, such as redesigning landscaping, upgrading lighting and controls, and adding new solar panel arrays.

Don't Miss These Exhibitions Before They Close!

VIKINGS

Final day: Sunday, October 4

The popular image of the Vikings—fierce raiders with horned helmets—is being challenged by a more complex picture. *Vikings*, the exhibition, reveals new insights brought to light through archaeological discoveries. Think you know the Vikings? See into the lives of these legendary people through more than 500 artifacts, many never before displayed outside of Scandinavia.

Major Sponsors:



The exhibition was organized by the Swedish History Museum in Sweden, in partnership with MuseumsPartner in Austria.

BUNKY ECHO-HAWK

Final day: Sunday, October 25

Contemporary artist Bunky Echo-Hawk's live painting events, colorful skateboard decks, and his design partnership with Nike all debunk stereotypes about Native Americans today. Now, see what happens when this artist, activist, and traditional Pawnee singer draws inspiration from historic Field Museum collections, from a richly painted ceremonial dress to traditional spoons carved from bison horn.

This exhibition is organized by The Field Museum and co-curator Bunky Echo-Hawk.

This project is made possible by a grant from the U.S. Institute of Museum and Library Services.

Greek Gifts for the Holidays



Shop the Museum Stores to bring home a memento of the extraordinary exhibition *The Greeks—Agamemnon to Alexander the Great* and pay tribute to one of the most influential civilizations of all time.

Remember, Field Museum members receive a 10 percent discount on all Store purchases, and each purchase supports the Museum's public and scientific programs. As always, you can shop 24 hours a day at store.fieldmuseum.org using the discount code MEMBER.



RECIPROCAL BENEFITS

The co-presentation of *The Greeks—Agamemnon to Alexander the Great* by The Field Museum and the National Hellenic Museum (NHM) provides a unique opportunity for members of both institutions to enjoy reciprocal benefits: access to the Museums, tickets to special exhibitions and unique programs, discounts on purchases at Museums' stores and restaurants, and more!

Field Museum members will receive a host of benefits including special general admission pricing at NHM. For more information visit: fieldmuseum.org/member-benefits, email membership@fieldmuseum.org or call 312.665.7700.



museum campus neighbors

ADLER PLANETARIUM

Join us for our **Lunar Eclipse Viewing Party** on Sunday, September 27. This rare, celestial event marks the last total lunar eclipse visible from Chicago in the 2014–2015 lunar eclipse tetrad. We'll have telescopes, special lectures by Adler astronomers, and a lunar sky show. Also, start your weekends early every third Thursday of the month at the 21+ event, **Adler After Dark**. All tickets include admission, access to sky shows, and an opportunity to peek through the Doane Observatory. Visit www.adlerplanetarium.org.

SHEDD AQUARIUM

Shedd Aquarium has Halloween "of-fish-ially" covered. Put on a costume and come to Shedd's **Spooky Seas** family overnight on Friday, October 16. Explore familiar exhibitions after dark, take part in games, crafts and other activities, listen to aquatic ghost stories and sleep with the fishes! Then celebrate the fall harvest when Shedd hosts the fourth annual release party for **Revolution Brewing's Penguin Hops** limited-edition harvest ale, made with hops grown in Shedd's sustainable gardens. Visit www.sheddaquarium.org.



The Field Museum salutes the people of Chicago for their long-standing support of the Museum through the Chicago Park District.



Programming is partially supported by a grant from the Illinois Arts Council Agency.

Official Airline of The Field Museum



events



SARA HENDERSON

N. W. HARRIS LEARNING COLLECTION Re-opens this fall!

By lending artifacts and specimens, the *N. W. Harris Learning Collection* at *The Field Museum* allows educators and parents to take part of the Museum's collection to their classrooms or homes. More info at harris.fieldmuseum.org. Membership ranges from \$10 to \$100.

Opens on September 1

ADULTS / EDUCATORS / FAMILIES



ART AND SCIENCE SPOTLIGHT @ Crown Family PlayLab

Listen to storytellers, sing with musicians, or create with artists in the *Crown Family PlayLab*. Pandas (9.19), Chinese dragons (10.17), shadow puppets (11.21), and Greek dance performance (12.19). FREE.

Third Saturday of the month
Sept 19 / Oct 17 / Nov 21 / Dec 19 /
11am–2pm

FAMILIES / KIDS / SCOUTS / TEENS



EDUCATION DEPARTMENT

LEARNING THROUGH COLLECTIONS Professional Development for Educators

Join us for a free professional development series. Sessions focus on how to incorporate objects from the museum's Learning Collection into your curriculum for hands-on, collaborative, and inquiry-based learning. Introduction to Object-based Learning (9.26), Exploring the Next Generation Science Standards (10.17), and The Art of a Good Question (11.14). FREE with pre-registration.

Saturdays / Sept 26 / Oct 17 / Nov 14 /
9:30am–12pm

ADULTS / EDUCATORS / FAMILIES



GN91772_02ED / KAREN BEAN

DOZIN' WITH THE DINOS Spend the night at *The Field Museum*!

Overnights are held on select Fridays and one Saturday from 5:45pm to 9am the following morning for families with children ages 6–12 years old. Visit fieldmuseum.org/overnights for dates.

Standard Overnight: \$65, \$60 members/groups

Premium Package 1: \$78, \$68 members

Premium Package 2 with Tour: \$90, \$80 members

Select Fridays + one Saturday in 2016

FAMILIES / KIDS / SCOUTS / TEENS



EDUCATION DEPARTMENT

BADGE DAY AT THE FIELD

Badge Day at The Field has Girl and Boy Scouts trekking across the Museum, exploring natural sciences through hands-on activities, and going behind the scenes with Field Museum scientists. All Merit Badge requirements are completed through the program.

\$30, \$25 members

Select Saturdays / 9:30am–3pm

Girl Scouts > September 19, 26

Boy Scouts > October 3, 17, 24

FAMILIES / KIDS / SCOUTS / TEENS



NEOLEA HELLENIC DANCERS

GREEK DANCE PERFORMANCE

The Joffrey Ballet's Community Engagement dancers and the Neolea Hellenic Dance Troupe present an original dance performance that creatively integrates the spirit of traditional Greek dance into a modern showcase. FREE!

Saturday / December 19 / 1pm

FAMILIES / KIDS / SCOUTS / TEENS

PROGRAM TICKETS + INFO

312.665.7400

MEMBERSHIP

312.665.7700

For event details, program registration, and to explore the Museum's full events calendar, please visit fieldmuseum.org/at-the-field.



JOHN WEINSTEIN

THE FIELD ON ICE!

Join the Founders' Council for a one-of-a-kind event this fall: *The Field on Ice*. Mingle with Field Museum scientists, go behind the scenes at the United Center, and talk to experts from the Blackhawks team. This exclusive event is made possible by the Chairman of the Chicago Blackhawks and Field Museum Trustee Rocky Wirtz. *The Field on Ice* is open to Founders' Council members only (annual gifts of \$2,500+). For date and time and to join the Founders' Council, please call Erin Meyer at 312.665.7715.

FAMILIES / KIDS / SCOUTS / TEENS



JOE TIGHE

EVOLUTION @ REVOLUTION

Interested in having a dialogue with some of Chicago's most fascinating scientists? Join Emily Graslie from The Brain Scoop in an exploration of evolution. Emily will host Field Museum scientists in discussions about aspects of evolution and how their research may be impacting and informing this vast area of science.

If you are naturally curious and looking for a chance to connect with peers in an inquiry-inspired and light-hearted atmosphere, join us at Revolution Brewing, 2323 North Milwaukee Avenue.

Ticket price includes Revolution brews and snacks. Limited space available; advance tickets recommended. For adults (21+), \$22, \$20 members

Wednesdays / 6:30–8:30pm

September 9 > Bill Stanley

October 7 > Pete Makovicky*

November 11 > Kevin Feldheim

December 9 > Janet Voight

ADULTS / EDUCATORS / FAMILIES



BREAKFAST WITH SANTA AND SUE

Add some history to your family traditions and celebrate the holidays at The Field Museum. Enjoy a buffet breakfast in Stanley Field Hall and share all of your holiday wishes when you take your picture with Santa and SUE. Tickets go on sale this fall. Adults: \$45, \$34 members Kids: \$30, \$24 members

For seating times call 312.665.7705.

Saturdays / December 5, 12, 19

FAMILIES / KIDS / SCOUTS / TEENS



EDUCATION DEPARTMENT

TEENS TAKE THE FIELD

Explore the research and collections of The Field Museum through the lens of digital media. Teens are invited to explore the exhibitions and collections, then tinker, make, and create their own digital media projects. FREE

Select Wednesdays + Thursdays / Sept 23–Dec 9 / 4:30–6:30pm

FAMILIES / KIDS / SCOUTS / TEENS



*This lecture presented in partnership with the Chicago Council on Science and Technology.



© NATIONAL ARCHAEOLOGICAL MUSEUM, ATHENS

PASSPORT TO GREECE

Celebrate the opening of *The Greeks—Agamemnon to Alexander the Great* at this exclusive after-hours party. Enjoy access to the exhibition, live Greek music from local bands, and appetizers from local Greek restaurants. Attire is business or business casual; national costume encouraged! Cash bar. Tickets go on sale October 28. \$35, \$30 members (until Dec 2), \$40, \$35 members (until Dec 8), \$45, \$40 members (at the door)

Wednesday / December 9 / 6:30–9pm

ADULTS / EDUCATORS / FAMILIES



FIELD ENCOUNTERS

Donors to The Field Museum's Annual Fund have a new opportunity to tailor their

learning experiences through the Field ENCOUNTERS program. Gain access to Museum programs and stay in-the-know on topics of your choice. Depending on your level of support, up to three Field ENCOUNTERS tracks may be chosen. Please opt-in to this program to receive additional details and ENCOUNTERS invitations.

For more information on the Field ENCOUNTERS program, please contact Katlyn Hemmingsen at 312.665.7789 or khemmingsen@fieldmuseum.org.

• **Anthropology**

Discover the evolution of humankind and the diversity of cultures and societies.

• **Creatures + the Environment**

Learn more about the diversity of our planet and how Museum scientists put research into action to conserve the world's natural treasures and improve quality of life.

• **Exhibitions + Public Learning**

Explore how exhibition experts and educators bring science and natural history to life.



Give the GIFT OF MEMBERSHIP

As a current Field member, you already know the benefits of Museum membership. For the holidays, why not share the gift of discovery with someone special in your life? The holidays come around once a year, but a Field Museum membership brings joy and excitement to loved ones all year long.

Gift memberships include:

- Free admission and free and/or discounted tickets to our special exhibitions
- Tickets to our famed Members' Nights
- Discounts on education programs and in the Museum's stores and restaurants
- One-year subscription to *In The Field* member magazine
- Also, receive special holiday pricing on Adopt a Dino packages when purchased with a gift membership.

You can order online, call 312.665.7700, or on your next visit to The Field Museum.



FRANCK MERCURIO