

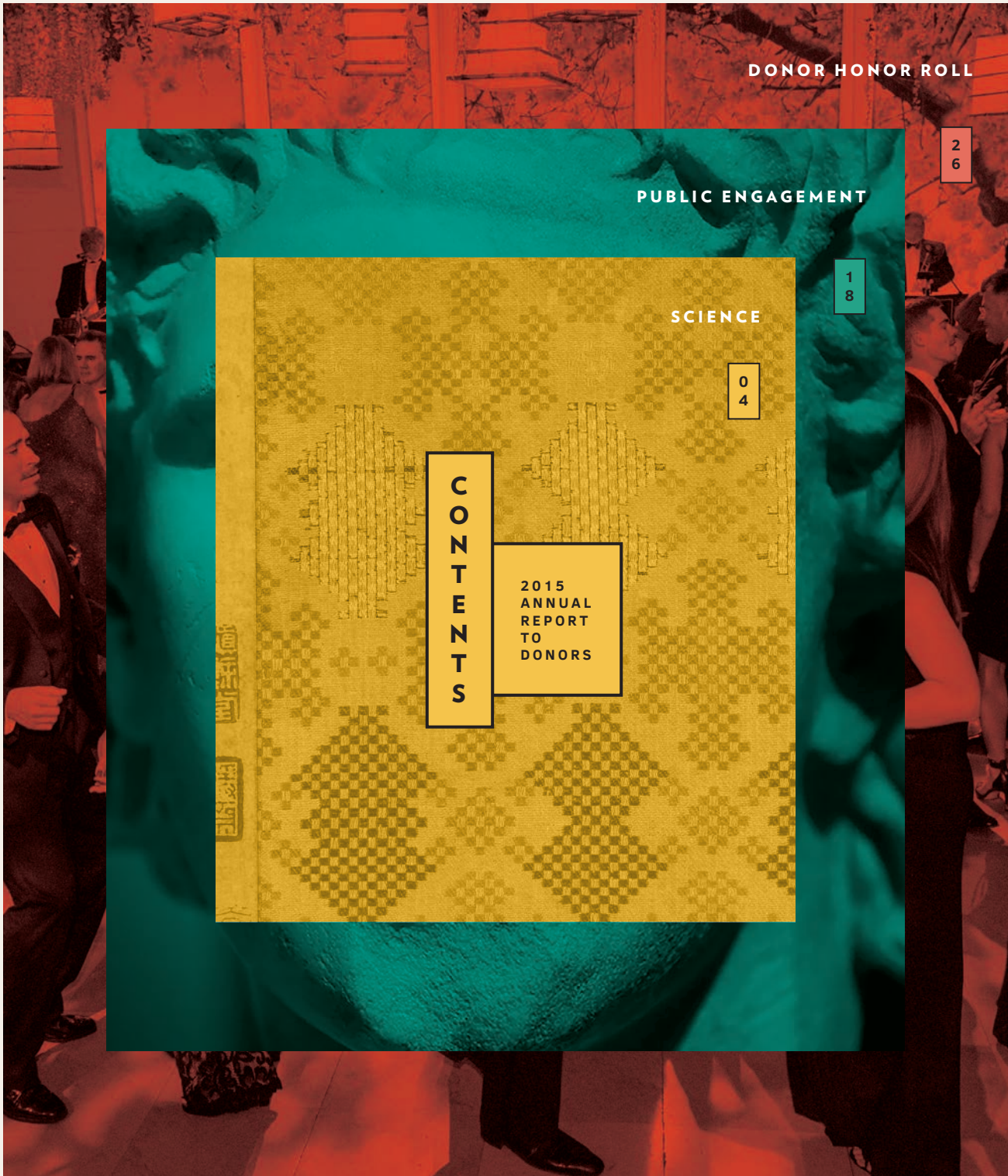
同治丙寅孟秋

ANNUAL REPORT TO DONORS

2015



The Field
Museum



DONOR HONOR ROLL

26

PUBLIC ENGAGEMENT

18

SCIENCE

04

C
O
N
T
E
N
T
S

2015
ANNUAL
REPORT
TO
DONORS



Dear Friends,

In 2015, The Field Museum launched a five-year strategic plan for transformation. Guided by its four main initiatives, your Museum is evolving for the 21st century.

On the cover of this report you will find images from the stunning *Cyrus Tang Hall of China*. In addition to being the largest exhibition in the United States to examine Chinese culture and history from an anthropological perspective, it incorporates new technologies and exhibition design to **transform the visitor experience into a personal journey of scientific discovery**.

The Museum made great strides in 2015 to **deepen the impact of its education programs**.

The *N. W. Harris Learning Collection*, now more than 100 years old, shared artifacts and specimens with 69,000 students in classrooms across the Midwest. New digital studio opportunities inspired teen scientists, and a workshop series offered training for educators to incorporate Museum collections and Next Generation Science Standards in classrooms.

This year, the Field played a fundamental role in protecting areas of biological and cultural importance, including the 3.3 million-acre Sierra del Divisor National Park in Peru and the Pullman National Monument on the South Side of Chicago. Museum scientists described new species, recorded rare evolutionary occurrences, and shared the trove of knowledge held in our collections with citizens and scientists around the world. The Museum will continue to **maximize the influence of collections-based science in research and conservation action** for years to come.

A healthy endowment strengthens every aspect of the institution. 2015 was a year of historic new commitments to the Museum's endowment. Your support and guidance **builds financial and organizational capacity to ensure long-term success**.

We invite you to explore your Museum's year of remarkable achievements and growth in this report.

With gratitude,

Constance T. Keller
Board Chair

Richard W. Lariviere, PhD
President and CEO

COVER—This two-horned, five-clawed dragon is depicted on a Qing Dynasty (AD 1644-1911) silk robe in the new *Cyrus Tang Hall of China* (see page three). The dragon symbol was traditionally used only by the emperor to acknowledge his special status.



Looking at Chinese history through a new lens

The Field Museum unveiled the *Cyrus Tang Hall of China*, the first new permanent exhibition in four years. The hall showcases 400 Chinese artifacts from the Museum's extensive collections, including a 27-foot-long handscroll and objects from the Java Sea Shipwreck. In its first six months, the exhibition drew 320,000 guests who explored thousands of years of Chinese history. The hall debuted new digital technology, providing visitors with more choice and content than is possible with printed labels. The *Cyrus Tang Hall of China* is the Field's first exhibition available in an [interactive online format](#) in English and Chinese. The *Sue Ling Gin Garden* in the final gallery of the hall was created in memory of Trustee Sue Ling Gin-McGowan and features *guaishi*, or spirit stones, from Suzhou. The Museum is grateful to Cyrus Tang, Board Chair of the Cyrus Chung Ying Tang Foundation, and Trustee Michael Tang for their generosity and support. Thanks also to the William G. McGowan Charitable Fund for their gift in memory of Sue Ling Gin-McGowan.

RIGHT—This lacquered wooden statue from the Qing Dynasty depicts Wei Tuo, the guardian of written wisdom and laws in Chinese Buddhism. He is usually rendered as a general wearing full armor and holding a weapon.



BELOW—President Lariviere, Trustee Michael Tang, Board Chair Connie Keller, and Cyrus Tang at the *Cyrus Tang Hall of China* grand opening.

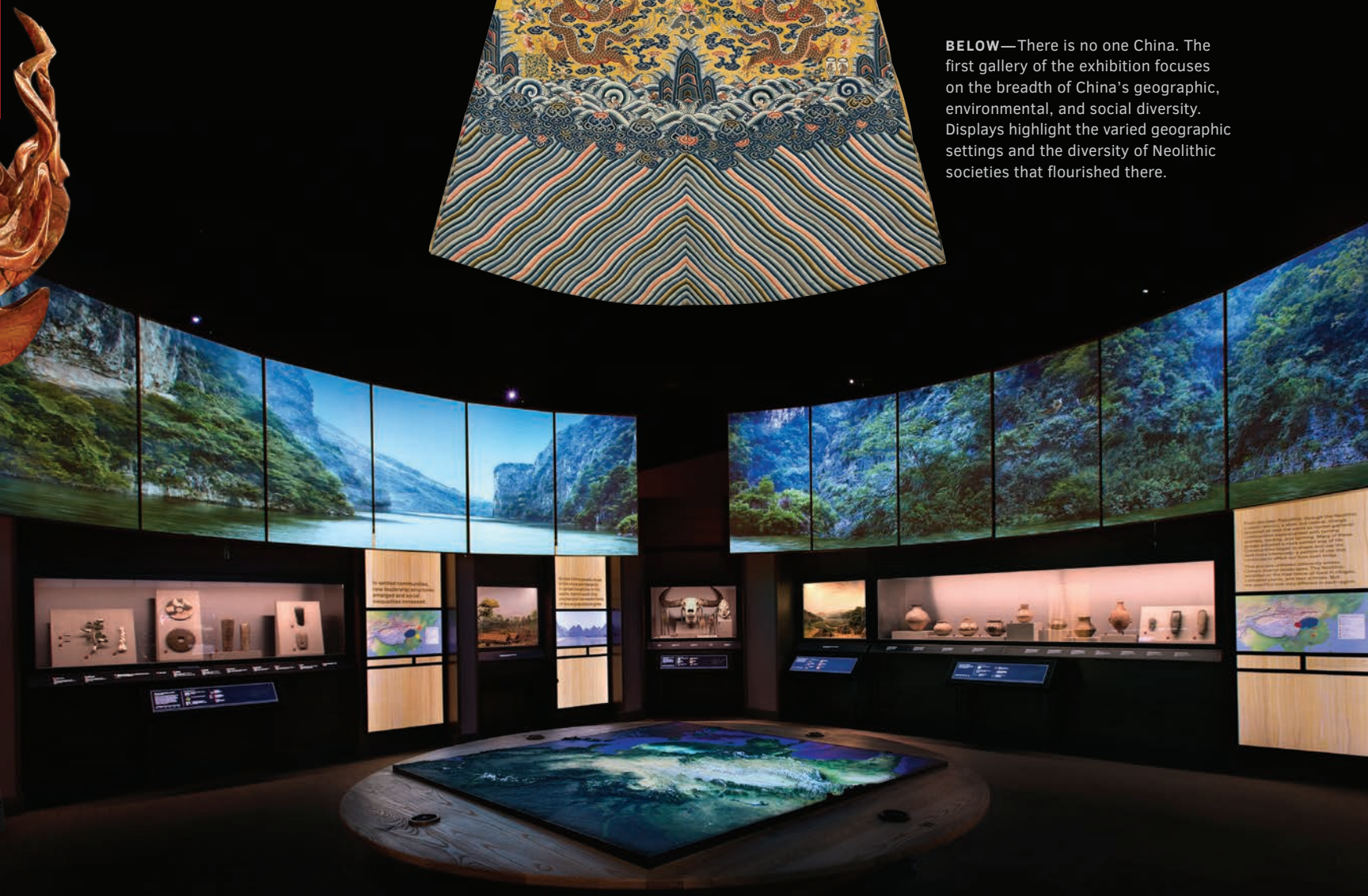


The Cyrus Tang Hall of China is the largest permanent exhibition in the United States to examine Chinese culture and history from an anthropological perspective.



LEFT—The bright yellow color of this silk robe from the Qing Dynasty was reserved for the imperial family. One of China's longest dynasties, the Qing established their emperor as the Son of Heaven, emphasizing his role as a link between the supernatural and human worlds.

BELOW—There is no one China. The first gallery of the exhibition focuses on the breadth of China's geographic, environmental, and social diversity. Displays highlight the varied geographic settings and the diversity of Neolithic societies that flourished there.





Darwinian discovery

Although this *Polylobus darwini* may not seem impressive at first glance, Charles Darwin himself collected it in 1834 off the coast of Chile. Museum staff discovered this tiny beetle while digitizing the Field's collection of 2,000 rove beetle type specimens, a project supported by the Grainger Digital Initiative. This unexpected encounter illustrates the depth of the Museum's collections and the importance of digitization efforts. Creating digital records allows staff to better understand the 30 million objects in the Field's holdings and to organize this information for future use.



2015
ANNUAL
REPORT
TO
DONORS

S
C
I
E
N
C
E



Malvina Hoffman's famous bronzes restored

Throughout much of 2015, conservators worked to restore the Museum's collection of historic bronzes by sculptor Malvina Hoffman. Unveiled in 1933, most of the sculptures were removed from public view by the 1970s. The conservation process included photo documentation, restoration, and research on the identities of the subjects who posed for the pieces. A generous gift from Pamela K. Hull, granddaughter of Stanley Field, and her husband Roger B. Hull supported this project. Eighty-three of the sculptures have been restored to their original beauty and more than 30 are on display in the new exhibition *Looking at Ourselves: Rethinking the Sculptures of Malvina Hoffman*. Thanks to The Elizabeth Morse Genius Charitable Trust and an anonymous donor for their support of the exhibition.



Sharing an ancient essay

This album-mounted rubbing, entitled *Preface to the Poems Composed at the Orchid Pavilion*, or *Lanting Xu*, is one of the most valuable items in the Museum's Chinese collection. Wang Xizhi, considered by many to be China's greatest calligrapher, composed the essay around AD 353 to commemorate a gathering of scholars who drank wine and made a game of composing poetry. The Field's copy of the rubbing dates to around AD 1140-1278 and may be the oldest version in existence. Museum anthropologists recently collaborated with the National Library of China Press to create a series of facsimile reproductions of the book. The reproductions will make this historic text more widely available to an audience that understands and appreciates its value, rarity, and beauty.



Collections inspire art and cultural conversation

The Field partnered with the Erehwon Center for the Arts in the Philippines to create the exhibition *Art and Anthropology: Portrait of the Object as Filipino*. Five Filipino-American artists and five Philippines-based artists produced individual works of art and collaborated on two murals, all inspired by ethnographic objects from museum collections. The Field opened its Philippine collection of 10,000-plus artifacts for this project. The exhibition, funded by the John D. and Catherine T. MacArthur Foundation, is a reinterpretation of ethnographic objects through the creation of contemporary artifacts. The mural *Deconstructing “Filipino”* (below) is displayed in the Chicago exhibition along with individual paintings by all ten artists.



ARTISTS—Leonardo Aguinaldo, Elisa Racelis Boughner, Jen Buckler, Cesar Conde, Emmanuel Robles Garibay, Florentino G. Impas, Jr., Joel Javier, Trisha Oralie Martin, Jason Jacobe Moss, and Othoniel M. Neri



Lace-bark specimens draw historian to Field Herbarium

The John G. Searle Herbarium houses some of the world’s finest lace-bark specimens, so it’s no surprise historian Steeve Buckridge, PhD, (Grand Valley State University) visited the collection while conducting research for his book *African Lace-Bark in the Caribbean: The Construction of Race, Class and Gender*. In the colonial era, slave and free women created lace for clothing and household decorations using the bark of the lagetto tree. Dr. Buckridge reported the Field’s specimens provide visual evidence of how lace-bark was used and highlight an aspect of enslaved Africans’ refined culture that has been overlooked in Caribbean historiography. Knowledge of how to create lace from the lagetto bark has now been lost and the tree is disappearing, making the Museum’s collection an essential cultural and biological resource.



Chicago’s Filipino community collaborates with the Field

The Philippines Digital Co-Curation project, funded by an anonymous foundation, made tremendous progress with the help of enthusiastic volunteers. The team photographed more than 4,000 objects from the Philippines Heritage Collection, scanned 6,000 historical documents, and transcribed 3,500 of those texts. The content is available on a co-curated web portal that enables two-way sharing of scientific, historical, and cultural information about this important collection.



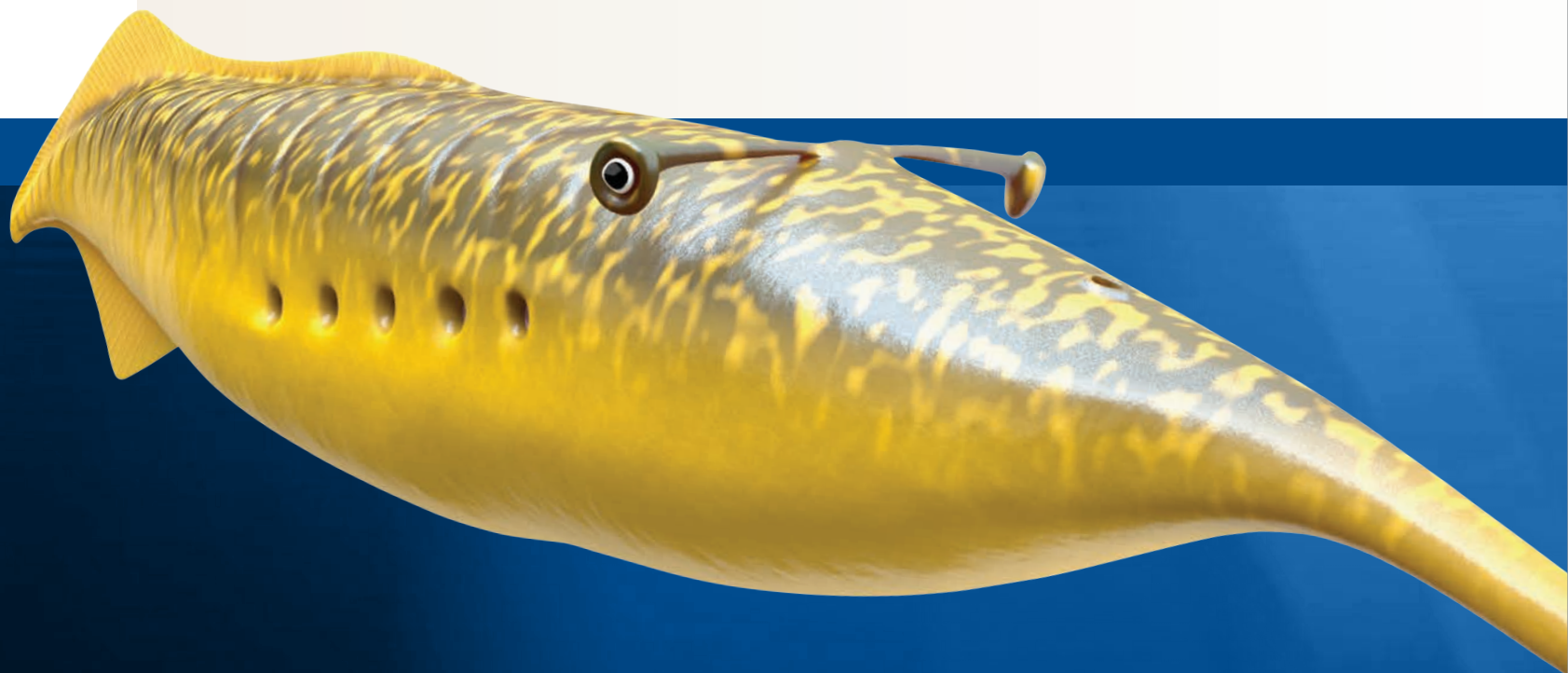
Kish display raises awareness of destruction in Iraq

In 2015, insurgent militants affiliated with the so-called “Islamic State” began destroying irreplaceable antiquities at museums and archaeological sites in Iraq. President Lariviere stated, “As custodians of one of the great natural history collections, The Field Museum is heartbroken by the destruction at the Mosul Museum and other cultural heritage areas.” To raise awareness of the damage to the world’s ancient culture and history, the Field displayed objects excavated at the site of Kish, an ancient Mesopotamian city in what is now the center of Iraq.

LEFT—The Museum acquired many of the objects in its Kish collection during a 1924 expedition to Iraq. This photograph shows workers employed by the expedition excavating the courtyard of a palace.

New DNA sequencer advances genomics research

A gift from René and Bruce Lauer enabled the recent acquisition of a MiSeq DNA sequencer, a valuable tool for Chicago’s evolutionary biology community. This “next generation” machine is capable of sequencing an organism’s entire genome—once a weeks-long process—in just a few days. In 2015, more than a dozen scientists from the Field and local universities harnessed the power of the instrument to study the genomes of ants, fungi, coca, tropical birds, sharks, and more.





Ensuring a bright future for beaded artifacts

Conservators are surveying more than 1,500 beaded objects in the North American collections to identify at-risk materials and ensure proper care and treatment. X-ray fluorescence technology and chemical analyses reveal some elements used to make beads harder, clearer, or more colorful may also lead to instability and deterioration over time. Results of this pilot project will inform strategies for long-term conservation and future grants needed to preserve these priceless objects.

Museum makes monstrous discovery

The Illinois state fossil, the Tully Monster (*Tullimonstrum gregarium*), is found only in the Mazon Creek assemblage, about 50 miles south of Chicago. Collections Manager of Fossil Invertebrates Paul Mayer and MacArthur Curator of Fossil Invertebrates Scott Lidgard, PhD, led a Museum team to digitize the Field's collection of 1,800 Tully fossils. The resulting images were critical to a major study conducted by scholars at The Field Museum and Yale University to determine, after 50 years of uncertainty, that the Tully was not an invertebrate, but a vertebrate—a fish, related to modern-day lampreys.





The Grainger Foundation creates historic endowment

The Grainger Foundation announced a \$20 million commitment to The Field Museum, the largest gift in the Field's history. The contribution will support two distinct priorities: research and public understanding of science.

A portion of the commitment provides a permanent endowment to ensure Museum scientists have the best research and analytical tools. Today's science breakthroughs are often technology-driven, and big data analysis is a rapidly growing component of research.

The endowment will help the Museum maintain its position as one of the world's leading natural history research institutions by regularly investing in new equipment, technologies, and specialized staff.

The Foundation's commitment will also create an interactive science learning space next to Stanley Field Hall. Opening in November 2016, this exhibition will focus on family-oriented learning programs and serve as a hub for scientist-led discussions and demonstrations, citizen-science initiatives, and other programs to engage guests in behind-the-scenes activities.

“

The Grainger Foundation has supported The Field Museum for 50 years. During our long association, the Foundation has partnered with us on several landmark projects, including the *Grainger Hall of Gems*, *Jacqueline Kennedy: The White House Years*, *The Nature of Diamonds*, and the Grainger Digital Initiative. This new investment strengthens the Field's core mission by maximizing the resources we can use to explore our world and communicate the importance of science to our visitors. We share a common vision with The Grainger Foundation of inspiring scientific curiosity in Chicagoans of all ages, now and for many decades to come.”

RICHARD W. LARIVIERE, PHD, *President and CEO*



#241092



Polk Family Charitable Fund supports young research scientists

A significant grant from the Polk Family Charitable Fund has furthered the research of early-career Field Museum scientists. The grant enabled Ronald Fauseit, PhD, to conduct chemical analyses of Zapotec ceramic effigy vessels to pinpoint their origins and help identify any forgeries in the collection. This information provides necessary context for materials acquired more than 70 years ago, when data standards for new acquisitions were not as high. With improved and verified artifact information, scientists will better understand the role of the ceramic effigy vessels for the ancient Zapotecs.



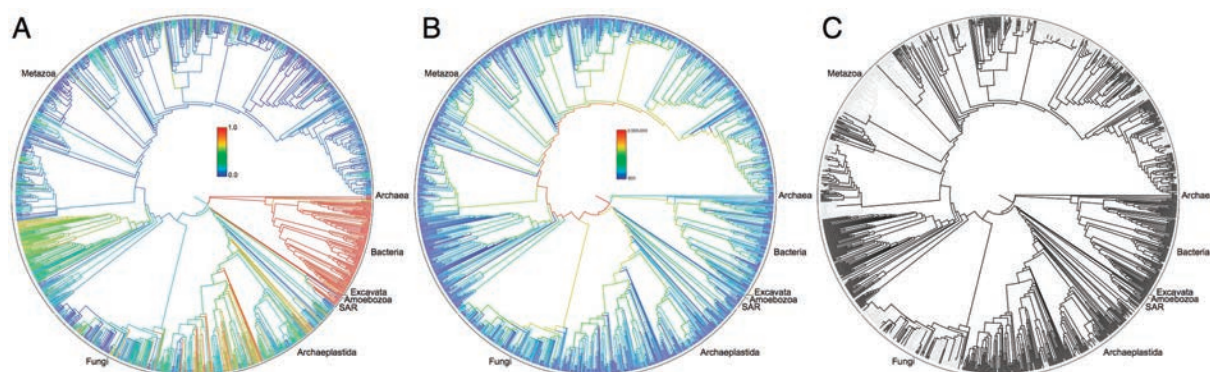
The case of the missing ball court

Ancient Pre-Columbian peoples played a sport now referred to as the “Mesoamerican ball game.” For more than four decades, archaeologists wondered why no ball court had been found at Lambityeco, Mexico (around AD 500–800). MacArthur Curator of Mesoamerican, Central American, and East Asian Anthropology Gary Feinman, PhD, and Adjunct Curator Linda Nicholas, PhD, finally discovered the court and excavated its northern half. Mexico’s National Institute of Anthropology and History is expanding the present cultural heritage and archaeological tourism location.



Four new species found in Brazil

Timonya annae, pictured above, is a small, fully aquatic amphibian from the Permian Period (around 298–252 million years ago) described for the first time by Associate Curator Ken Angielczyk, PhD, and an international team. In the same region of northeastern Brazil, researchers found and described two more amphibians and one reptile. These discoveries give scientists a clearer picture of ancient animal communities in a locality that has often been overlooked. Research was supported by The Grainger Foundation, the National Geographic Society, and the Negaunee Foundation.



“Virgin births” in sawfish raise conservation concerns

Smalltooth sawfish typically reproduce like other animals: sperm + egg = baby. However, a recent study by a team including Kevin Feldheim, PhD, A. Watson Armour III Manager of the Pritzker Laboratory for Molecular Systematics and Evolution, found 3% of sawfish in a Florida estuary were born through parthenogenesis, that is, without a male’s contribution. This is a coping strategy sometimes seen in situations where males are scarce, such as zoos. Parthenogenesis in a wild population could represent the species’ last-ditch effort to avert extinction. Learn more about parthenogenesis and the smalltooth sawfish at fieldmuseum.org/sawfishbirth.



Scientists document “backward evolution”

This songbird from Madagascar, *Xanthomixis zosterops*, is one of the few known animals believed to have undergone despeciation, whereby separate species merge back together into one. A team of Field Museum and Malagasy scientists documented this rare evolutionary occurrence through DNA analysis and studies of the birds’ lice, which vary by species. John Bates, PhD, Associate Curator of Birds and Head of Life Sciences, said this new discovery is significant because many people might have doubted the possibility of despeciation. He added, “We’re responsible for preserving the earth’s species. Knowing more about how evolution works can help us do that.”

< Open Tree of Life launched

The Open Tree of Life is a groundbreaking digital map of the interconnections of life on Earth. This online tool, created by a scientific team including Associate Curator Rick Ree, PhD, links more than 2.3 million species into one “tree” of life. Developed with support from the National Science Foundation, the Open Tree will grow as new data is added, while advancing research in comparative biology, conservation, agriculture, and genomics. Explore this unprecedented instrument at www.opentreeoflife.org.



Field furthers plans to protect Calumet Area

More than 160 community members gathered to discuss the feasibility of a Calumet National Heritage Area at a summit in May. The Field's Chicago Region Program Director and President of the Calumet Heritage Partnership Mark Bouman, PhD, was a key organizer in the event. The summit celebrated Calumet's natural and cultural resources and set local goals for the region. The envisioned Heritage Area will protect the unique, biologically diverse landscape that stretches from the new Pullman National Monument to the Indiana Dunes National Lakeshore. For more information visit www.calumetheritage.org.





Connie and Dennis Keller name Science Action Center

Constance “Connie” T. Keller, Chair of the Board of Trustees, and her husband Dennis J. Keller announced a commitment of \$10 million to the Museum’s endowment. Their support will help translate knowledge to practical application for nature preservation and cultural understanding in Chicago and around the world. In recognition of this historic gift, the Museum has named the Keller Science Action Center. The Action Center is unparalleled among museum-based conservation programs, both in its impact and unique approaches to bringing scientific information to communities with local governments and indigenous peoples. The Field Museum thanks Connie and Dennis for their 20 years of leadership and enthusiasm for protecting the natural world.



Moore Foundation invests in Peruvian conservation

Since 2001, the Gordon and Betty Moore Foundation has generously supported the Museum’s conservation activities. A recent grant from the Foundation is stimulating large-scale efforts in Northern Peru. In December, the Field’s Andes-Amazon team members conducted an overflight of a potential new conservation area in the Putumayo drainage. The Twin Otter plane flew over expansive peatlands, large palm swamps, diverse upland forests, and a dazzling array of rivers, lakes, and streams, all captured in 90 GB of photos and videos. The overflight was a preparatory mission in advance of Rapid Inventory 28 to learn more about the Putumayo region. You can follow the progress of Rapid Inventory 28 on Facebook.

Protecting the Yellowstone of the Amazon

On November 8, the Peruvian government designated 3.3 million-acres of Amazonian rainforest as the Sierra del Divisor National Park. For more than a decade, The Field Museum worked to conserve this spectacular mountain range, beginning with a flyover of the site in 2002. A rapid inventory in 2005 led to the discovery of more than 20 species new to science and provided a springboard for three years of intensive work with local communities. The new park forms the cornerstone of a vast conservation corridor, protecting an amazing diversity of plants and animals, safeguarding uncontacted indigenous people, and improving the quality of life in neighboring villages.

Cordillera Escalera summit forges historic conservation agreements

The Andes-Amazon team convened a summit of indigenous groups and government agencies to discuss the protection of Peru's Cordillera Escalera Mountains. During two days of intense discussion, participants reached agreements about pursuing land conservation, combatting illegal logging, and halting road construction in the mountains. The summit marked the first organized meeting between the indigenous Shawi and Awajun peoples, whose relationship has historically been marked by distrust. Cooperation among residents will be critical to the long-term conservation of these spectacular mountains.





Chicago community joins in conservation activities

Chicago conservation projects flourished in 2015 thanks to the collaboration of local communities and Keller Science Action Center staff. The annual Beaubien Woods Celebration drew more than 400 people to the South Side forest preserve to explore nature through science activities, as well as canoeing, archery, and fishing. Museum staff led an “expedition” for macro-invertebrates in Beaubien Flatfoot Lake and planted more than 1,000 native flowers with community volunteers. An ongoing project in Eggers Grove, south of Chicago at the Illinois-Indiana border, aims to increase native species biodiversity, discourage the spread of invasive species, and create a growing spirit of environmental stewardship in the local community. In 2015, 40 volunteers seeded more than 10,000 plants in the marsh. Museum staff continue to lead workdays every month in Eggers Grove.



President Obama designates Pullman as National Monument

President Barack Obama announced the designation of the Pullman National Monument on February 19, 2015, drawing national attention to a portion of the Calumet area that includes the country's largest steel mill and sixth largest oil refinery. Museum staff have been working to protect the Pullman district as an educational and cultural space through their work in conserving the Calumet region. The Field's contribution to this project was made possible by ArcelorMittal, The Boeing Company, and Nicor Gas.

Ford nurtures youth action

The Ford Motor Company Fund announced a \$40,000 grant for the Field's Youth Conservation Action projects. Ford has generously supported Museum programs since 2007, providing essential funding for a summer Environmental Leadership Internship, professional development for community action facilitators, and student-led programs such as Calumet Is My Back Yard. Ford employees also participated in the Field's corporate volunteer program, engaging in restoration efforts at Sand Ridge Nature Center in South Holland.



P
U
B
L
I
C

E
N
G
A
G
E
M
E
N
T

2015
ANNUAL
REPORT
TO
DONORS



LEFT—The wealthy and powerful men of Archaic Greece wore helmets and carried swords and shields. This displayed their power, even in the grave. These helmets were not meant for fighting but to indicate rank in the Underworld.



ABOVE—This realistic and graceful wreath features hundreds of leaves and blossoms. It was worn by Queen Meda and is one of the most remarkable gold objects of the ancient world.

RIGHT—John P. Calamos, Sr. provided essential funding for *The Greeks*.



Epic partnership presents Greek exhibition

The Greeks—Agamemnon to Alexander the Great brought 500 treasures from more than 20 of Greece's most prestigious national collections to Chicago. Co-presented by The Field Museum and the National Hellenic Museum, the exhibition invited visitors to explore 5,000 years of Greek history and the development of a civilization's politics, economics, and art. The Field Museum is grateful for leadership support from John P. Calamos, Sr. and the John P. Calamos Foundation. Mr. Calamos is the Founder, Chairman, and Global Chief Investment Officer of Calamos Investments and Board Chairman of the National Hellenic Museum.

Mammoths & Mastodons **returns to Chicago**

Mammoths & Mastodons: Titans of the Ice Age, created by The Field Museum, traveled around the country and returned to Chicago in 2015. The second showing of these colossal creatures drew even more visitors than the first. *Mammoths & Mastodons* closed in early 2016 and is on the road again. By the end of its tour, the exhibition will have been displayed by 14 museums in three countries.





Artifacts and specimens spur education

Field Museum collections have inspired young people since the *N. W. Harris Learning Collection* was founded more than 100 years ago. In 2015, the *Harris Learning Collection* loaned 1,728 artifacts and specimens to enhance the education of more than 69,000 pre-K through 12th grade students. Teachers participated in the “Learning Through Collections” workshop series that offered free professional development for utilizing collection items in the classroom. The workshops showcased objects available for loan and concentrated on inquiry-based learning, Next Generation Science Standards, and College, Career, and Civic Life (C3) Standards.



Teen-only space encourages science exploration

The Grainger Digital Media Studio launched Teen Open Studio in 2015. The Open Studio is a teen-only space that focuses on the intersection of science, technology, and learning. In the first year of the program, students examined mass extinction and civic action by designing public service announcement stickers about climate change and explored the history of conservation, creating their own videos about Field Museum dioramas.



Rice Foundation funds new native gardens

The Daniel F. and Ada L. Rice Foundation announced a significant contribution to support the creation of native gardens at The Field Museum. The Rice Gardens will be rooted in Museum science and the institution's commitment to educate the public about nature and conservation. Visitors will enjoy the space as a living exhibition focused on natural landscapes and Illinois' indigenous plants and animals.



John and Rita Canning support endowment and education programming

Trustee and Past Board Chairman John Canning and his wife Rita, an active Women's Board member, announced a \$5 million gift to support endowment and learning programs. Part of the gift funds the Early Elementary Science Partnership (E2SP), a program that provides model science units, workshops, and in-classroom coaching to educators in pre-K through 3rd grade classrooms in ten Big Shoulders Fund schools. The partnership allows educators to enhance science instruction and implement Next Generation Science Standards. In recognition of this important gift, the Museum will name the Rita and John Canning Conference Center in the West wing of the building.



The *Krampmacken* sails through the sky

On a cold February morning, the replica Viking ship *Krampmacken* sailed into The Field Museum. A crane raised the ship over the South staircase while staff ushered the vessel through the doors. The *Krampmacken* was placed outside *Vikings*, a traveling exhibition organized by the Swedish History Museum in partnership with MuseumsPartner in Austria. The exhibition featured hundreds of rare Scandinavian artifacts including astonishing jewelry and metal work revealing the Vikings were talented artists, farmers, and innovators. The Field thanks Discover and Viking Cruises for their sponsorship of this exhibition.



Teen Volunteer Program engages public

Sixty-six high school students dedicated 5,000 hours to the Summer Teen Volunteer Program. The teens engaged more than 40,000 guests in Field science and collections. Twenty-seven teens continued as year-round volunteers in the *Crown Family PlayLab* and at other public learning events.

Scientists visit students, virtually

Virtual Visits from The Field utilizes videoconferencing technology to bring scientists into classrooms to talk about research and collections. Each broadcast focuses on current work at the Museum, such as the popular “Cold Dinos: Exploring Fossils in Antarctica” with Pete Makovicky, PhD, Associate Curator of Dinosaurs (pictured). *Virtual Visits* are generously sponsored by Target.





Blackhawks bring back Lord Stanley's Cup

The Field Museum was pleased to celebrate the Chicago Blackhawks' 2015 Stanley Cup Championship win with a visit from the Cup. After the Blackhawks' third championship in six years, nearly 2,000 Blackhawks fans flocked to Stanley Field Hall to have their photo taken with the Cup and team mascot Tommy Hawk. Congratulations and thanks to Trustee Rocky Wirtz and the Chicago Blackhawks!



Everything is Dead! at The Field Museum

Instead of closing on July 4th weekend to accommodate anticipated crowds attending The Grateful Dead's *Fare Thee Well* concerts at Soldier Field, The Field Museum created a special exhibition and welcomed more than 17,000 guests over the three days. *All The Years Combine: Deadhead Treasures From The Grateful Dead Archive & GDTS Too* featured band-fan correspondence, drawings, posters, and "Tiger"—Jerry Garcia's famous guitar. The Field also hosted a musical performance by Jazz & Colors and held six events on its outdoor terraces.





Amateurs and experts flock to ID Day

The Field Museum renewed its tradition of Identification Day, inviting the public to bring their found and collected biological specimens for examination. This year's event welcomed more than 2,500 participants of all ages. Scientists identified 80 specimens, including a blue-gray gnatcatcher bird, a seal skull, a giant walking stick insect, and numerous Mazon Creek fossils.

Friendship between Chicago and China inspires art exhibition

The Field Museum was honored to display *City Windows*, an exhibition of Chinese paper cuts depicting iconic views of Chicago and Beijing. Qiao Xiaoguang, one of the finest contemporary practitioners of Chinese paper cutting, created the 15 original pieces as a tribute to the friendship that has grown between Chicago and China. Large-scale reproductions of the paper cuts are on display at Chicago's O'Hare Airport. Thanks to MACLEAN-FOGG, Wanxiang America, Inc., Wendy and Hank Paulson, and Margot and Tom Pritzker for making *City Windows* possible.





**D
O
N
O
R**

**H
O
N
O
R
O
L
L**

**2015
ANNUAL
REPORT
TO
DONORS**

TRUSTEES

LEFT

Front row (from left to right): Robert W. Crawford, Jr., Norman R. Bobins, Adele S. Simmons, Jack M. Greenberg, and Lucinda M. Baier. *Middle row:* Aurie A. Pennick, Kathleen Klaeser, Jeffrey B. Keller, Sir Peter Crane FRS, and John F. Podjasek III. *Back row:* David D. Hiller, Kenneth W. Coquillette, Ryan S. Ruskin, Douglas P. Regan, and Patrick Wood-Prince.

CENTER

Front row: John W. Rowe, Judith S. Block, Marshall Field V, Constance T. Keller, Richard W. Lariviere, Ronald J. Gidwitz, and James J. O'Connor, Sr. *Middle row:* Kermit R. Crawford, Alejandro Silva, Neil S. Novich, Dr. Richard A. Chaifetz, John L. Bucksbaum, W. Rockwell Wirtz, and Marsha A. Cruzan. *Back row:* Bobby Mehta, Randolph R. Kurtz, James S. Frank, Wilbur H. Gantz III, Jai Shekhawat, and Mark Tebbe.

RIGHT

Front row: James L. Alexander, Clare M. Muñana, Liz Sharp, and Robert B. Loveman. *Middle row:* Charles M. Falcone, Wayne E. Hedien, Dawn L. Solomon, John Rau, and James W. Compton. *Back row:* Matthew K. Simon, Everett S. Ward, Susan M. Benton, Lewis S. Gruber, Michael E. Flannery, and Dr. Patricia Marroquin Norby.



Board of Trustees

EXECUTIVE COMMITTEE

Constance T. Keller
Chair

John W. Rowe
Chairman Emeritus

Norman R. Bobins
Audit

John L. Bucksbaum
*Facilities and
Administrative Services*

John A. Canning, Jr.
At Large

Dr. Richard A. Chaifetz
Retirement and Benefits

Marsha A. Cruzan
Development

James S. Frank
Science Action

Marshall B. Front
Investment

Wilbur H. Gantz III
Collections

Judy Greffin
Finance

David D. Hiller
Integrative Research

William C. Kunkler III
Governance

Richard W. Lariviere^E
President & CEO

Bobby Mehta
Learning

Clare M. Muñana
Government Relations

Peter B. Pond
Exhibitions

Matthew K. Simon
Secretary

Mark Tebbe
Technology

W. Rockwell Wirtz
Marketing

James L. Alexander
Lucinda M. Baier
Susan M. Benton
Thomas L. Bernardin
Howard B. Bernick
Amy E. Best
Gregory C. Case
Richard W. Colburn
Kenneth W. Coquillette
David Cotton
Sir Peter Crane FRS
Kermit R. Crawford
Robert W. Crawford, Jr.
Oscar A. David
Louis T. Delgado
Roger K. Deromedi
Richard Elden
Charles M. Falcone
Rick Fezell
Marshall Field V
Michael E. Flannery

J. Erik Fyrwald
Ronald J. Gidwitz
Ruth Ann M. Gillis
Robert H. Gordon
Antonio J. Gracias
Jack M. Greenberg
Lewis S. Gruber
Adnaan Hamid
Terry A. Jenkins
Jamee C. Field Kane
Todd Kaplan
Bryant L. Keil
Michael L. Keiser
Jeffrey B. Keller
Richard L. Keyser
Randolph R. Kurtz
Diane von Schlegell Levy
Margaret B. MacLean
Dr. Patricia Marroquin
Norby
W. James McNerney, Jr.
Neil S. Novich
James J. O'Connor, Jr.
Michael O'Grady
David C. Parry
Aurie A. Pennick

John F. Podjasek III
Richard S. Price
J. B. Pritzker
John Rau
Elizabeth W. Reese
Douglas P. Regan
Thomas S. Ricketts
Michael J. Sacks
Nydia S. Searle
Michael E. Severino, M.D.
Jai Shekhawat
Alejandro Silva
Adele S. Simmons
Dawn L. Solomon
Mark R. Walter
Everett S. Ward
Laura S. Washington
Gregory D. Wasson
Melvin D. Williams
Patrick Wood-Prince

EX-OFFICIO TRUSTEES

Beth A. Humbert-Schmidt
Kathleen Klaeser
Jesse H. Ruiz
Ryan S. Ruskin
Liz Sharp
Kevin Stineman
Bryan S. Traubert

NATIONAL TRUSTEES

Gail K. Boudreaux
Jean-Claude Brizard
Jeffrey T. Foland
Leo F. Mullin
Michael Tang

LIFE TRUSTEES

Mrs. T. Stanton Armour
Charles W. Benton^D
Judith S. Block
Willard L. Boyd
Worley H. Clark, Jr.
James W. Compton
Frank W. Considine
Stanton R. Cook^D

Founders' Council

The Founders' Council is The Field Museum's premier annual giving donor society. Members contribute \$2,500 or more to support every aspect of the Museum's mission.

LEADERSHIP COMMITTEE

Thomas S. Ricketts^T
Co-Chair

Liz Sharp^T
Co-Chair

Ms. Katherine T. Donaldson

Donna B. Freeman

Peter B. Freeman

Mrs. Noel Kaplan

Mr. Robert B. Loveman^T

Elisabeth C. Meeker

Lanny Passaro

Ryan S. Ruskin^T

Patricia O. Schnadig

Mrs. Martha A. Peterson Shaw

Ms. Heather T. Sparling

Douglas Walter

Pam Walter

Mr. Ryan B. Whitacre

\$75,000+ Chairman's Circle Distinguished Leadership

Mr.^T and Mrs. Gergory C. Case

Mr.^T and Mrs. Michael W. Ferro, Jr., Alta Vista Fund at The Chicago Community Trust

Mr.^T and Mrs. Michael L. Keiser

Mr. and Mrs.^T Dennis J. Keller

Robert M. Levy and Diane von Schlegell Levy^T

John W.^T and Jeanne M. Rowe

Mr. and Mrs.^T Michael D. Searle

\$50,000–74,999 Chairman's Circle Leadership

Anonymous (2)

Mr.^T and Mrs. Norman R. Bobins

Rita and John^T Canning

Dr.^T and Mrs. Richard A. Chaifetz

Mr.^T and Mrs. Roger K. Deromedi

Mr.^T and Mrs. Marshall Field V

Mr.^T and Mrs. James S. Frank

Wilbur^T and Linda Gantz

Pamela K. and Roger B. Hull

Mrs. Jamee Field Kane^T/
The Edith B. and Lee V.
Jacobs Fund No. 1

Mr.^T and Mrs. Richard L. Keyser

Mr.^T and Mrs. Bobby Mehta

The Negaunee Foundation

Cari and Michael^T Sacks

Mark^T and Kimbra Walter

\$25,000–49,999 Chairman's Circle

Anonymous (2)

Ms. Lucinda^T and
Mr. David Baier

Howard B. Bernick^T

John^T and Jackie Bucksbaum

Mr.^T and Mrs. Frank W.
Considine

Mr.^T and Mrs. Kenneth W.
Coquillet

Mr.^T and Mrs. Robert W.
Crawford, Jr.

Ms. Elizabeth I. Crown and
Mr. William Wallace

Marsha Cruzan^T and
Thomas McGinnis

The Richard H. Driehaus
Charitable Lead Trust

Efroymsen Family Fund^T

Evans Food Group

Dr.^T and Mrs. Charles M.
Falcone

Mr. and Mrs. Eugene F. Fama

Mr.^T and Mrs. Michael E.
Flannery

Christina and Ron^T Gidwitz

Mr.^T and Mrs. Jack M.
Greenberg

Mr. and Mrs.^T William E. Greffin

Mr.^T and Mrs. Lewis S. Gruber

Katie Hazelwood and
Todd Kaplan^T

Reinhardt H. and Shirley R.
Jahn Foundation

Mr.^T and Mrs. Jeffrey B. Keller

Mr. William C. Kunkler^T and
Ms. Susan Crown

Mr. Randolph R. Kurtz^T

Clare M. Muñana^T

Mr.^T and Mrs. Neil S. Novich

Mr.^T and Mrs. Michael O'Grady

Mr. John F. Podjasek III^T

Peter^T and Alicia Pond

Kimberly Querrey^T and
Louis Allen Simpson

John^T and Colette Evans Rau

Mr. and Mrs.^T Mike Reese

Mr. Douglas P. Regan^T and
Ms. Kathy Brock

Thomas^T and Cecelia Ricketts

Lydia and Patrick Ryan, Jr.

Mr. Jai Shekhawat^T

Matthew K.^T and Julie Simon

Dawn L. Solomon^T

Mr.^T and Mrs. Mark Tebbe

Kim and Miles^T White

Mr.^T and Mrs. Patrick
Wood-Prince

\$10,000–24,999 Founders' Council Conservator

Anonymous (2)

Ms. Amy E. Best^T

Mr. and Mrs.^T Philip D.
Block III

Linda and Vincent Buonnano

Carol and Tom Butler

Mr. and Mrs. Theodore R.
Butz/The Butz Foundation

Thomas and Dianne Campbell

Mr. and Mrs. James J. Conrad

Mr. Stanton R. Cook^{TD}

Mr.^T and Mrs. Kermit R.
Crawford

Ms. Janet W. Diederichs

Janet and Craig Duchossois

Mr.^T and Mrs. Rick Fezell

Peggy and Steve Fossett
Foundation

Marshall B. Front Family
Charitable Foundation/
Laura De Ferrari and
Marshall B. Front^T

Ms. Ruth Ann M. Gillis^T

Mr. and Mrs. Richard C.
Godfrey

Mr.^T and Mrs. Antonio J.
Gracias

Mrs. Stephanie C. Harris/
The Edith B. and Lee V.
Jacobs Fund No. 2

Wayne^T and Colette Hedien

Mr. David D. Hiller^T

Mrs. Mary P. Hines

Doris B. Holleb^T

Dr. and Mrs. Wayne J.
Holman III

Mrs. Noel Kaplan

Mr. and Mrs. Keith Kizziah

Ms. Nancy W. Knowles

Laurie and Rich Kracum

Dr. Robert A. Kubicka and
Dr. Claire Smith

Dr.^{TE} and Mrs. Richard W.
Lariviere

The Lavin Family Foundation

Mr. Robert B.^T and Mrs. Gail J.
Loveman

Dr. Kennon P. McKee

Mr.^T and Mrs. W. James
McNerney, Jr.

Mr. and Mrs. Madhavan K.
Nayar

Mr.^T and Mrs. James J.
O'Connor, Sr.

Mr. and Mrs. William A. Osborn

David^T and Rosalind Parry

Ms. Aurie A. Pennick^T

Mr.^D and Mrs. Gordon S.
Prussian

Mrs. William L. Searle

Mr. and Mrs. Romolo Sidoli

Adele S. Simmons^T and
John L. Simmons

Joachim and June
Staackmann

Ms. Wendy Strauss

\$5,000–9,999 Founders' Council Surveyor

Anonymous (3)

Alexander and Alexander
Attorneys at Law^T

Mrs. T. Stanton Armour^T

Ms. Laura Bader and
Mr. Victor Sturm

Mr. E. M. Bakwin

Mrs. Mary Baniak and
Mr. Mike Baniak

Dr. Verna L. Baughman

Ms. Susan M. Benton^T

Dave and Mary Bernauer

Mrs. Katherine Birck

Mr. and Mrs. Jim Brittingham

Mr. and Mrs. Andrew W. Brown

Rosemarie and Dean Buntrock



The Field on Ice

Guests joined Blackhawks experts and Field Museum scientists behind-the-scenes at the United Center to experience Museum collections like never before. The Field Museum thanks Trustee Rocky Wirtz and the Chicago Blackhawks for hosting [The Founders' Council](#) for The Field on Ice.

ABOVE—Trustee and Chicago Blackhawks Chairman Rocky Wirtz, Founders' Council Co-Chair Liz Sharp, Public Address Announcer for the Chicago Blackhawks Gene Honda, Founders' Council Co-Chair and Chicago Cubs Chairman Tom Ricketts, and President Lariviere on the center ice.



Dr. George T. Caleel and
Mrs. Rebecca Childers Caleel
Dr. Robert W. Carton
Mr.^D and Mrs. Henry T. Chandler
Joyce Chelberg
Froilan and Cecilia Concepcion
Mary and Jim Costello
Mr.^T and Mrs. David Cotton
Mr. and Mrs. William A. Crane
Mr. and Mrs. John T.
Cunningham
Dr. and Mrs. Tapas K.
Das Gupta
Mr. and Mrs. Robert O.
Delaney, Jr.
Mr. and Mrs. James M. Denny/
John G. Searle Family Trust
Mr. and Mrs. Samuel H. Ellis
Mr. and Mrs. Robert Feitler
Mr. Harve A. Ferrill
Ginny and Peter Foreman
Mr. and Mrs. Philip M.
Friedmann
Mr. and Mrs. Camillo Ghiron
Mr. and Mrs. James J. Glasser
Ms. Donna J. Godel and
Mr. Roger E. Godel
Richard and Mary L. Gray
Mrs. Charles C. Haffner III

Mr. and Mrs. William J.
Hagenah III
Barbara W. Hamilton
Mrs. D. Foster Harland
Mr. and Mrs. Matthew Harris
Beverly and Warren Hayford
Jerry and Anna Marie Kelly
Mr. and Mrs. Sheldon E. Kent
Dennis and Kathleen^T Klaeser
Mr. and Mrs. Bruce H. Lauer
Liz and Eric Lefkofsky
Mr. Richard J. Loewenthal, Jr.
Mr. Brent Makaus
Mr. and Mrs. Timothy J. Malloy
Mr.^T and Mrs. Scott P. Marks, Jr.
Mr. Andrew H. Mathis
Mr.^T and Mrs. John W.
McCarter, Jr.
Jack and Goldie Wolfe
Miller Fund
Mr. and Mrs. Thomas M.
Mulcahy
Mr.^T and Mrs. Leo F. Mullin
Mrs. George V. Myers
Mrs. Mary Jane Nordlund
Mr. and Mrs. Charles W. Palmer
Lanny and Terry Passaro
Mr. and Mrs. John W. Puth

Mr. and Mrs. Robert Raimondi
Ms. Helen S. Reed
Mrs. John Shedd Reed
Paul and Joan Rubschlager
Karla Scherer
Mr. and Mrs. Gordon I. Segal/
Segal Family Foundation
Mr. and Mrs.^T Jeffrey S. Sharp
Mr. Roger D. Shaw, Jr.
Mrs. Ann T. Shields
Rose L. Shure^D
Harold B. Smith
Ms. Elizabeth L. Snyder
Mr. and Mrs. Robert A. Taylor
Mr. and Mrs. Ed Thayer
Mr. Howard J. Trienens
Mrs. Herbert A. Vance
Mr. and Mrs. Robert J. Wagner
Everett S. Ward^T and
Iris K. Sims
Professors Johannes and
Julia R. Weertman
Barbara H. West
Mrs. Henry P. Wheeler
Mr. James P. Wilkin and
Mrs. Abra Wilkin
Mr. and Mrs. Kenneth J. Yager

\$2,500–4,999
Founders' Council Member
Anonymous (4)
Mrs. Birute J. Apke
Mr. Michael D. Arnold and
Ms. Monica Wallace
Sue and Stephen Baird
Mr. and Mrs. Aaron A. Barlow
Mr. and Mrs. Philip S. Beck
Mr. and Mrs. Michael D. Belsley
Mr. and Mrs. Harrington Bischof
Mr. and Mrs. Andrew K. Block
Mr. and Mrs. Trenton Blythe
Dr. R. D. Bock and
Dr. Renee Menegaz-Bock
Mr. David Bohan and
Ms. Kathryn Kemp
Mr. and Mrs. John J. Borland, Jr.
Willard L.^T and Susan K. Boyd
Ms. Lori Breslauer^E
David and Michelle Buck
Mr. and Mrs. Randolph Burt
Mr. Andrew T. Call
Tom and Joan Castino
Mr. and Mrs. John S. Chapman
Mr. and Mrs. Paul S. Chatalas
Dr. and Mrs. Kenneth W.
Ciriacks
Mr.^T and Mrs. Worley H. Clark, Jr.

Ms. Betty L. Cleeland	Jill Hutchison and David Rosholt	Mrs. China I. Oughton	Harvey and Mary Struthers
Mr. James W. Compton ^T	Mr. and Mrs. James M. Johnson	Ms. Donna L. Owens	Ms. Judith B. Sugarman
Mr. Mark Crane	Ms. Pamela M. MacVicar Johnson	Mr. and Mrs. Richard L. Parish III	Mr. Arthur T. Susman
Professor ^T and Lady Peter R. Crane	Mr. and Mrs. Alex Kallend	Mr. and Mrs. Joseph Paszczyk	Ms. Sharon Allyn Taylor
Dr. Jim W. Croft ^E and Mrs. Marilyn Martinson Croft	Charles L. Katzenmeyer ^E	Ms. Denise Peterson	Mr. and Mrs. Courtney D. Tedrowe
Mr. and Mrs. Mark D. Dawson	Mr. Bryant Keil ^T	Mr. ^T and Mrs. Richard J. Pigott	Mr. and Mrs. Richard L. Thomas
Mr. ^E and Mrs. Ray DeThorne and Family	Mr. and Mrs. Kenneth Keller	Mr. and Mrs. Charles J. Pitman	Jim and Carol Tichy
Mrs. Lidia B. Devonshire	Mr. and Mrs. T. Eric Kilcollin	Michael and Tanya Polsky	Mr. and Mrs. Thomas Tisbo
Mr. and Mrs. Byram E. Dickes	The King Family Foundation	James A. Radtke and Susan A. Kressin	Dr. Michael M. Todd
Mr. Thomas R. Doler	Mr. and Mrs. William J. Kirby	Ms. Anita J. Rogers	Mr. Jeffrey A. Urbina and Ms. Gaye Lynn Hill
Dr. Richard A. Domanik and Dr. Janice Y. Domanik	Mr. and Mrs. Glenn A. Kolososki	Mr. and Mrs. Jeffrey S. Ross	Mr. and Mrs. Thomas Veldman
Mrs. Glenda W. Duncan	Ms. Patricia Kosmerl	Mr. and Mrs. Norman J. Rubash	Mr. and Mrs. David J. Vitale
Ms. Mignon Dupepe and Mr. John Snyder	Mr. Richard G. Kron and Ms. Deborah A. Bekken ^E	Dr. Myron E. Rubnitz and Mrs. Susan B. Rubnitz	Mr. and Mrs. Douglas H. Walter
La and Philip Engel	Mr. and Mrs. Robert Kunkler	Ryan Ruskin ^T and Michael Andrews	Mr. and Mrs. Lon Wehrle
Mrs. Jerome L. Ettelson	Mr. and Mrs. Marc LaGrois	Mr. and Mrs. David W. Ruttenberg	Mr. Ryan B. Whitacre and Ms. Katherine T. Donaldson
Mr. and Mrs. Alexander H. Faurot	Ms. Wende L. Fox Lawson and Mr. Lawrence J. Lawson	Mr. and Mrs. Patrick G. Ryan	Ms. Jean A. White and Ms. Helene Beisecker
Mary and Bruce Feay	Mr. and Mrs. Patrick Layng	Mr. and Mrs. F. E. Schmitt	Mr. William J. White ^T
Mr. and Mrs. Kenneth P. Fischl	Mr. ^D and Mrs. Elliot Lehman	Mr. and Mrs. Stephen Schmitt	Ms. Claudia L. Winkler
Sonia and Bill Florian	Mrs. Deidre LeMire	Mr. and Mrs. Richard H. Schnadig	Ms. Nancy Hamill Winter
Mr. and Mrs. James Flugstad	Mr. and Mrs. Louis L. Lizzadro	Karen and Frank Schneider	Mr. and Mrs. William E. Wolf
Mrs. Susan Flynn	Ms. Renée Logan	Tom and Barbara Schnitzer	Mr. and Mrs. Tom Wotovich
Mr. ^T and Mrs. Jeffrey T. Foland	Mr. and Mrs. Larry Lubell	Mr. and Mrs. Alan Sebulsky	Ms. Elizabeth Yntema and Mr. Mark Ferguson
Donna B. and Peter B. Freeman	Ms. Susan H. Luciu	Mr. and Mrs. Richard J. L. Senior	Dr. and Mrs. Gerald D. Young, Jr.
Ms. Katie Freiburger	Dr. Douglas R. MacAyeal and Ms. Linda A. Sparks	Mr. and Mrs. Stephen H. Sentoff	Mr. and Mrs. Robert Zentner
Joanne Benazzi Friedland	Sandy and Jerry Manne	Mr. Robert M. Shafis ^E and Ms. Carol A. Erickson	If you feel an error has been made in presenting this donor honor roll, please contact Erin Meyer at emeyer@fieldmuseum.org .
Mr. and Mrs. Joel M. Friedman	Marie A. Marotta	Mr. and Mrs. Andrew H. Shaw	
Mrs. Delta A. Greene	Ms. Jamie C. Marshall and Mr. Richard Sobkowiak	Bob and Charlene Shaw	
Timothy and Joyce Greening	Bruce and Jane McLagan	Pam and Tom Sheffield/JS Charitable Trust	
Mr. David Patrick Gries	Ms. Carlette C. McMullan and Mr. John Gibbons	Alissa and Jonathan Shulkin	
Mr. and Mrs. Edward C. Haffner	Ms. Carrie C. McNally	Mrs. Dolores Silverman	
Mr. and Mrs. Dean M. Harrison	Mr. and Mrs. Charles P. McQuaid	Mr. Richard M. Skolly and Dr. Kate A. Feinstein	
Mr. and Mrs. Raymond V. Hartman	Elisabeth C. Meeker	Mr. and Mrs. John B. Snyder	
Mr. and Mrs. Thomas Z. Hayward, Jr.	Mrs. Withrow W. Meeker	Ms. Amanda A. Sonneborn and Mr. Peter R. Malecki	
Mr. and Mrs. Patrick J. Herbert III	Mrs. Pamela L. Miles	Mr. Thomas South	
Mr. Robert Hevey	David and Sue Milligan	Ms. Heather T. Sparling and Mr. Jason Bakk	
Mr. and Mrs. John L. Hines	Mr. and Mrs. Franklin Moore	Mrs. Barbara A. Speer	
Ms. Peggy Hoberg	Mr. and Mrs. Michael Moorman	Liz Stiffel	
Mr. and Mrs. Richard M. Holm	Mr. James H. Niehoff and Ms. Jolie R. Macier	Mr. ^T and Mrs. Kevin Stineman	
Mr. and Mrs. Arthur Holzheimer	Ms. Christina J. Norton and Mr. John A. Biek	Mr. Kevin L. Stoeckel and Mrs. Emily Heisley Stoeckel	
Ms. Laurie Huget and Mr. Werner Huget	Mrs. Virginia O'Neill		
Ms. Lorraine M. Hurt and Mr. George M. Ingram	Mr. Jason Ortiz		

2015 Contributions

Philanthropy at The Field Museum supports the institution's people and programs. These contributions promote scientific research, create world-famous exhibitions, provide opportunities for education, and keep the Museum's doors open 364 days a year.

\$20,000,000+

The Grainger Foundation, Inc.

\$10,000,000–19,999,999

Mr. and Mrs.^T Dennis J. Keller

\$5,000,000–9,999,999

Anonymous

Rita and John^T Canning

Chicago Park District, on behalf of the people of Chicago

\$1,000,000–4,999,999

The Boeing Company

Mr. and Mrs. John P. Calamos, Sr.

D & R Fund/Glasser and Rosenthal Families

Wilbur^T and Linda Gantz

Fay and Daniel Levin

William G. McGowan Charitable Fund, Inc.

Mr.^T and Mrs. Bobby Mehta

National Science Foundation

The Negaunee Foundation

Cyrus Chung Ying Tang Foundation

\$500,000–999,999

Anonymous

Ernst & Young LLP

Gordon and Betty Moore Foundation

Nicor Gas

Peter^T and Alicia Pond

John W.^T and Jeanne M. Rowe

\$100,000–499,999

Anonymous

Allstate Insurance Company

Aon Corporation

ArcelorMittal

Bank of America

Bobolink Foundation

Barbara^E and Roger Brown

Joyce Chelberg

The Chicago Community Trust

Frank W. and Nancy S. Considine Foundation

Mr. Mark Crane

Discover

Exelon Corporation

Mr.^T and Mrs. Michael W. Ferro, Jr., Alta Vista Fund at The Chicago Community Trust

Mr.^T and Mrs. Marshall Field V

Mr.^T and Mrs. James S. Frank

General Packaging Products

Julian Grace Foundation

Sally Mead Hands Foundation

ITW

JPMorgan Chase & Co.

Robert M. Levy and Diane von Schlegell Levy^T

John D. and Catherine T. MacArthur Foundation

Robert R. McCormick Foundation

The Andrew W. Mellon Foundation

National Aeronautics and Space Administration

National Oceanographic and Atmospheric Administration

Northern Trust

The Regenstein Foundation

Daniel F. and Ada L. Rice Foundation

Cari and Michael^T Sacks

Mr. and Mrs. Richard H. Schnadig

Mr. and Mrs.^T Michael D. Searle

Adele S. Simmons^T and John L. Simmons

U. S. Fish and Wildlife Service

United Airlines

Viking Cruises

\$50,000–99,999

Anonymous (2)

Abbott

AbbVie

Mr.^T and Mrs. Norman R. Bobins

The Brinson Foundation

Mr.^T and Mrs. Gregory C. Case

Dr.^T and Mrs. Richard A. Chaifetz

Charles Schwab & Co, Inc.

The Crown and Kunkler Family^T

Mr.^T and Mrs. Roger K. Deromedi

The Field Foundation of Illinois, Inc.

Mrs. Jamee Field Kane^T/
The Edith B. and Lee V. Jacobs Fund No. 1

Mr.^T and Mrs. Michael L. Keiser

Mr.^T and Mrs. Richard L. Keyser

Barry and Mary Ann MacLean/
MacLean-Fogg

Ms. Karen A. Nordquist

Mr.^T and Mrs. Michael O'Grady



Marie Louise Rosenthal Library receives endowment gift

Marie Louise Rosenthal was a dedicated volunteer in the Museum's Library for nearly 30 years. The library, housing an exceptional collection of material, some of it dating as far back as 1486, was named for Mrs. Rosenthal in 2005 by her children and their families. A new commitment from the D & R Fund further supports the core mission of the Rosenthal Library as a resource for Museum staff and visiting scholars. Mrs. Rosenthal's daughter Louise Glasser, son-in-law James Glasser, and daughter-in-law Babette Rosenthal announced a new endowment gift of \$1 million to keep the Library stable, productive, and innovating in the future. The Museum is grateful for the enduring friendship of the Rosenthal and Glasser families.

Mr.^T and Mrs. Michael E. Flannery

Christina and Ron^T Gidwitz

Mr.^T and Mrs. Jack M. Greenberg

Guggenheim Partners

Harris Family Fund of

The New York Community Trust

Pamela K. and Roger B. Hull

Polk Family Charitable Fund

Michael and Tanya Polsky

John^T and Colette Evans Rau

Target

Tawani Foundation

U.S. Bank

Mark^T and Kimbra Walter

Ms. Nancy Hamill Winter

\$25,000–49,999

Anonymous (6)
 Paul M. Angell Family Foundation
 Ms. Lucinda^T and Mr. David Baier
 The Robert and Isabelle Bass Foundation, Inc.
 Mr. and Mrs. Frank L. Bauer
 Baxter International Inc.
 The Howard B. Bernick Foundation^T
 BMO Harris Bank
 John^T and Jackie Bucksbaum
 Elizabeth F. Cheney Foundation
 Chicago Blackhawks Charities
 Mr.^T and Mrs. Kenneth W. Coquillette
 Mr.^T and Mrs. Robert W. Crawford, Jr.
 Ms. Elizabeth I. Crown and Mr. William Wallace
 Marsha Cruzan^T and Thomas McGinnis
 Mr. and Mrs. John T. Cunningham
 Gaylord & Dorothy Donnelley Foundation
 The Richard H. Driehaus Charitable Lead Trust
 The Duchossois Group, Inc.
 Janet and Craig Duchossois
 Efroymsen Family Fund^T
 Evans Food Group
 Dr.^T and Mrs. Charles M. Falcone
 Mr. and Mrs. Eugene F. Fama
 Mary and Bruce Feay
 Ford Motor Company Fund
 Julius N. Frankel Foundation
 Marshall B. Front Family Charitable Foundation/
 Laura De Ferrari and Marshall B. Front^T
 Goldman, Sachs & Co.
 Ellis Goodman Family Foundation
 Mr. and Mrs.^T William E. Greffin
 Kenneth Griffin on behalf of Citadel LLC
 Mr.^T and Mrs. Lewis S. Gruber

John R. Halligan Charitable Fund
 Katie Hazelwood and Todd Kaplan^T
 Illinois Arts Council
 The Institute for Aegean Prehistory
 Reinhardt H. and Shirley R. Jahn Foundation
 JRS Biodiversity Foundation
 Mr.^T and Mrs. Jeffrey B. Keller
 Dennis and Kathleen^T Klaeser
 Mr. Randolph R. Kurtz^T
 Caron and Alan Lacy
 Dr.^{TE} and Mrs. Richard W. Lariviere
 Leo Burnett Worldwide
 Mazza Foundation
 McDonald's Corporation
 Mr.^T and Mrs. W. James McNerney, Jr.
 Midwest Foods
 Elizabeth Morse Genius Charitable Trust
 Motorola Solutions Foundation
 Clare M. Muñana^T
 National Geographic Society
 Navigant
 Mr.^T and Mrs. Neil S. Novich
 Mr. and Mrs. William A. Osborn
 Peoples Gas
 Pepsi Beverages Company
 Mr. John F. Podjasek III^T
 Prince Charitable Trusts
 JB and MK Pritzker Family Foundation^T
 Kimberly Querrey^T and Louis Allen Simpson
 Quest Foundation
 Mr. Douglas P. Regan^T and Ms. Kathy Brock
 Thomas^T and Cecelia Ricketts
 Mr. and Mrs. Patrick G. Ryan
 Lydia and Patrick Ryan, Jr.
 Bob and Charlene Shaw
 Mr. Jai Shekhawat^T
 Matthew K.^T and Julie Simon
 Dawn L. Solomon^T
 Mr.^T and Mrs. Mark Tebbe
 Mr. and Mrs. Orlin D. Trapp, Jr.

Walgreens
 Wanxiang USA
 Kim and Miles^T White
 Mr.^T and Mrs. Patrick Wood-Prince
\$10,000–24,999
 Anonymous (4)
 95% Share Marketing, Inc.
 Alexander and Alexander Attorneys at Law^T
 Aileen S. Andrew Foundation
 Aramark
 Archer Daniels Midland Company
 Bears Care
 Ms. Susan M. Benton^T
 Ms. Amy E. Best^T
 Mr. and Mrs.^T Philip D. Block III
 Bloomberg
 Mr. and Mrs. Andrew W. Brown
 The Buchanan Family Foundation
 Linda and Vincent Buonnano
 Carol and Tom Butler
 Mr. and Mrs. Theodore R. Butz/
 The Butz Foundation
 Thomas and Dianne Campbell
 Chicago Title & Trust Company Foundation
 Mr. Ricardo Chimal, Jr.
 Comcast Corporation
 The Comer Family Foundation
 Mr. and Mrs. James J. Conrad
 Mr.^T and Mrs. Kermit R. Crawford
 The Daphne Hoch Cunningham 2012 Charitable Lead Trust
 The Davee Foundation
 Ms. Janet W. Diederichs
 Dover Corporation
 Mr.^T and Mrs. Rick Fezell
 Peggy and Steve Fossett Foundation
 Mr.^T and Mrs. Erik Fyrwald
 The Robert E. Gallagher Charitable Trust
 Mr. and Mrs. Camillo Ghiron
 Ms. Ruth Ann M. Gillis^T
 Mr. and Mrs. Richard C. Godfrey

Mr.^T and Mrs. Antonio J. Gracias
 W.W. Grainger, Inc
 Richard and Mary L. Gray
 Mr. and Mrs. King W. Harris/
 Harris Family Foundation
 Mrs. Stephanie C. Harris/
 The Edith B. and Lee V. Jacobs Fund No. 2
 Mr. Kenneth Haydek
 Wayne^T and Colette Hedien
 Mr. David D. Hiller^T
 Mrs. Mary P. Hines
 Hoellen Family Foundation
 Doris B. Holleb^T
 Dr. and Mrs. Wayne J. Holman III
 Jocarno Fund
 Mrs. Noel Kaplan
 Ms. Nancy W. Knowles
 Laurie and Rich Kracum
 Dr. Robert A. Kubicka and Dr. Claire Smith
 Lauer Foundation for Palentology Science and Education NFP
 Mr. and Mrs. Bruce H. Lauer
 The Lavin Family Foundation
 Cristina Sierra and Daniel Liberman
 Mr. Robert B.^T and Mrs. Gail J. Loveman
 Malott Family Foundation
 Mr.^T and Mrs. John W. McCarter, Jr.
 Dr. Kennon P. McKee
 Mr. and Mrs. Andrew J. McKenna, Sr.
 MetLife Foundation
 Molex Incorporated
 Morgan Stanley
 Debra Moskovits^E and Jack W. Fuller
 Mr.^T and Mrs. Leo F. Mullin
 Mr. and Mrs. Madhavan K. Nayar
 Mr.^T and Mrs. James J. O'Connor, Sr.
 David^T and Rosalind Parry
 Ms. Aurie A. Pennick^T
 PNC Financial Services
 Mr.^D and Mrs. Gordon S. Prussian

Mr. and Mrs. Phillip B. Rooney	A. G. Cox Charity Trust	Liz and Eric Lefkofsky	Professors Johannes and Julia R. Weertman
Paul and Joan Rubschlager	Professor ^T and Lady Peter R. Crane	Mr. Richard J. Loewenthal, Jr.	Barbara H. West
S&C Electric Company	Mr. and Mrs. William A. Crane	Mr. Brent Makaus	Mr. and Mrs. Bruce W. White
S&P Global	Dr. and Mrs. Tapas K. Das Gupta	Mr. and Mrs. Timothy J. Malloy	Abra Wilkin Fund
Mrs. William L. Searle	Mr. and Mrs. Robert O. Delaney, Jr.	Mr. ^T and Mrs. Scott P. Marks, Jr.	William Blair & Company
Segal Family Foundation	Mr. and Mrs. James M. Denny/ John G. Searle Family Trust	Mr. Andrew H. Mathis	Wintrust Financial Corp.
Mr. and Mrs. ^T Jeffrey S. Sharp	Mr. ^E and Mrs. Ray DeThorne and Family	Susan Mikalauskis	Mr. and Mrs. Kenneth J. Yager
Mr. and Mrs. Romolo Sidoli	DeVry Education Group	Jack Miller Family Foundation	Ms. Elizabeth Yntema and Mr. Mark Ferguson
The Siragusa Foundation	Mr. and Mrs. Byram E. Dicks	Jack and Goldie Wolfe Miller Fund	
Joachim and June Staackmann	Edgewater Funds	Miniat Holdings	\$2,500–4,999
Strauss Foundation	Mr. and Mrs. Samuel H. Ellis	Mr. and Mrs. Thomas M. Mulcahy	Anonymous (4)
Tave Risk Management	Mr. and Mrs. Robert Feitler	Mrs. George V. Myers	Susan Aaron and Lawrence Aaron
Mr. and Mrs. Thomas Tisbo	Fellowes, Inc.	Mrs. Mary Jane Nordlund	The Allyn Foundation, Inc.
Everett S. Ward ^T and Iris K. Sims	Mr. Harve A. Ferrill	Mrs. China I. Oughton	Mrs. Birute J. Apke
Mrs. Henry P. Wheeler	Mr. and Mrs. Philip M. Friedmann	Palmer Family Foundation	Sue and Stephen Baird
	Ms. Donna J. Godel and Mr. Roger E. Godel	Mr. and Mrs. Charles W. Palmer	Mr. and Mrs. Aaron A. Barlow
\$5,000–9,999	Grant Thornton LLP	Lanny and Terry Passaro	Mr. and Mrs. Philip S. Beck
Anonymous (6)	Karen Z. Gray	The PrivateBank	Mr. and Mrs. Michael D. Belsley
Charles Adams Nature Research Foundation	Mrs. Charles C. Haffner III	The Puth Family Foundation	Mr. and Mrs. Harrington Bischof
Mrs. T. Stanton Armour ^T	Mr. and Mrs. William J. Hagenah III	Mr. and Mrs. John W. Puth	Mr. and Mrs. Andrew K. Block
Ms. Laura Bader and Mr. Victor Sturm	Ms. Barbara W. Hamilton	Dr. George B. Rabb	Mr. and Mrs. Trenton Blythe
Mr. E. M. Bakwin	Mrs. D. Foster Harland	Mr. and Mrs. Robert Raimondi	Dr. R. D. Bock and Dr. Renee Menegaz-Bock
Mrs. Mary Baniak and Mr. Mike Baniak	Harris Family Foundation	Ms. Helen S. Reed	Mr. David Bohan and Ms. Kathryn Kemp
Beam Suntory	Mrs. Joan W. Harris	Mrs. John Shedd Reed	Mr. and Mrs. John J. Borland, Jr.
Dave and Mary Bernauer	Mr. and Mrs. Matthew Harris	Mr. and Mrs. Jeffrey S. Ross	Willard L. ^T and Susan K. Boyd
Dr. Rüdiger Bieler ^E and Dr. Petra Sierwald ^E	Beverly and Warren Hayford	Karla Scherer	Brandt Foundation
Mrs. Katherine Birck	Mr. and Mrs. Patrick J. Herbert III	Ms. Carol H. Schneider	Ms. Lori Breslauer ^E
BlueCross BlueShield of Illinois	The James Huntington Foundation	Charles and M. R. Shapiro Foundation Inc.	Mr. and Mrs. Nathan A. Brown
Helen V. Brach Foundation	Mrs. Robert C. Hyndman	Arch W. Shaw Foundation	David and Michelle Buck
Curtiss T. and Mary G. Brennan Foundation	Institutional Capital Corporation	Charles H. & Beverly E. Shaw Foundation	Burt Family Foundation
Mr. and Mrs. Jim Brittingham	Mr. and Mrs. James M. Johnson	Rose L. Shure ^D	Mr. and Mrs. Randolph Burt
Rosemarie and Dean L. Buntrock Foundation	Charles L. Katzenmeyer ^E	Harold B. Smith	Mr. Andrew T. Call
Dr. George T. Caleel and Mrs. Rebecca Childers Caleel	Jerry and Anna Marie Kelly	Ms. Elizabeth L. Snyder	Tom and Joan Castino
Dr. Robert W. Carton	Mr. and Mrs. Sheldon E. Kent	Solberg Manufacturing, Inc.	Mr. and Mrs. John S. Chapman
CDW Corporation	Gerald A. and Karen A. Kolschowsky Foundation, Inc.	Mr. and Mrs. Neele E. Stearns, Jr.	Charles Sparks & Company
Ceres Foundation	Mr. and Mrs. Timothy Kolschowsky	Sulzer Family Foundation	Mr. and Mrs. Paul S. Chatalas
Mr. ^D and Mrs. Henry T. Chandler	Koppers Inc.	Mr. and Mrs. John W. Taylor III	Dr. and Mrs. Kenneth W. Ciriacks
Chubb Group Insurance Companies	Mr. and Mrs. Frederick A. Krehbiel	Mr. and Mrs. Robert A. Taylor	Mr. ^T and Mrs. Worley H. Clark, Jr.
Froilan and Cecilia Concepcion	Kroeschell Service, Inc.	Mr. and Mrs. Ed Thayer	Ms. Betty L. Cleeland
Mary and Jim Costello		Mr. ^T and Mrs. David M. Tolmie	Mr. James W. Compton ^T
Mr. ^T and Mrs. David Cotton		Mr. Howard J. Trienens	Mr. and Mrs. Patrick Corrigan
		Mrs. Herbert A. Vance	Dr. Jim W. Croft ^E and Mrs. Marilyn Martinson Croft
		Mr. and Mrs. Robert J. Wagner	
		Mr. and Mrs. John R. Walter	

Mr. and Mrs. Mark D. Dawson
Mrs. Lidia B. Devonshire
Mr. Thomas R. Doler
Dr. Richard A. Domanik and
Dr. Janice Y. Domanik
Mr.^T and Mrs. Thomas E.
Donnelley II
Mrs. Glenda W. Duncan
DuPage Community
Foundation

Mr. and Mrs. James Flugstad
Mrs. Susan Flynn
Mr.^T and Mrs. Jeffrey T. Foland
Donna B. and Peter B. Freeman
Ms. Katie Freiburger
Joanne Benazzi Friedland
Mr. and Mrs. Joel M. Friedman
Christine^E and Gary Giannoni
Mrs. Delta A. Greene

Hayford Family Foundation
Mr. and Mrs. Thomas Z.
Hayward, Jr.
Mr. Robert Hevey
Mr. and Mrs. John L. Hines
Ms. Peggy Hoberg
Mr. and Mrs. Richard M. Holm
Mr. and Mrs. Arthur Holzheimer
Ms. Laurie Huget and
Mr. Werner Huget
Ms. Lorraine M. Hurt and
Mr. George M. Ingram
Jill Hutchison and
David Rosholt
Jeni and Rich Jernstedt
Ms. Pamela M. MacVicar
Johnson
Mr. and Mrs. Alex Kallend
Ms. Dolores Kohl Kaplan
Mr. and Mrs. Kenneth Keller
Mr. and Mrs. T. Eric Kilcollin
The King Family Foundation
Mr. and Mrs. William J. Kirby
Mr. and Mrs. Adam Klauber
Mr. and Mrs. Glenn A.
Kolososki
Ms. Patricia Kosmerl
Mr. and Mrs. Lee V. Kremer
Mr. Richard G. Kron and
Ms. Deborah A. Bekken^E
Mr. and Mrs. Robert Kunkler
Mr. and Mrs. Marc LaGrois
Ms. Wende L. Fox Lawson and
Mr. Lawrence J. Lawson
Mr. and Mrs. Patrick Layng
Mr. and Mrs. Louis L. Lizzadro
Ms. Renée Logan
Mr. and Mrs. Larry Lubell
Ms. Susan H. Luciu
Ann & Robert H. Lurie
Children's Hospital Foundation
MAC Restoration
Contracting, Inc.
Dr. Douglas R. MacAyeal and
Ms. Linda A. Sparks
Mr. and Mrs. Jim MacGinnitie
Mr. and Mrs. Michael S.
Magnuson
Sandy and Jerry Manne
Marie A. Marotta

Ms. Jamie C. Marshall and
Mr. Richard Sobkowiak
Lisa McClung and Blasko Ristic
McKee Family Foundation
Bruce and Jane McLagan
Ms. Carlette C. McMullan and
Mr. John Gibbons
Ms. Carrie C. McNally
Mr. and Mrs. Charles P.
McQuaid
Elisabeth C. Meeker
Mrs. Withrow W. Meeker
Mercer
Mrs. Pamela L. Miles
David and Sue Milligan
Dr. Anthony G. Montag and
Dr. Katherine L. Griem
Mr. and Mrs. Franklin Moore
Mr. and Mrs. Michael Moorman
Mrs. Sandra L. Mueller
New Prospect Foundation
Mr. and Mrs. Walter B. Newsom
Mr. James H. Niehoff and
Ms. Jolie R. Macier
Ms. Christina J. Norton and
Mr. John A. Biek
Novak Charitable Trust
Mr.^T and Mrs. James J.
O'Connor, Jr.
Mrs. Virginia O'Neill
Old Republic International
Corporation
Mr. Jason Ortiz
Ms. Donna L. Owens
The Richard Laurence
Parish Foundation
Mr. and Mrs. Joseph Paszczyk
Ms. Denise Peterson
Mr.^T and Mrs. Richard J. Pigott
Mr. and Mrs. Charles J. Pitman
James A. Radtke and
Susan A. Kressin
Ms. Anita J. Rogers
Mr. and Mrs. Norman J. Rubash
Dr. Myron E. Rubnitz and
Mrs. Susan B. Rubnitz
Ryan Ruskin^T and
Michael Andrews
Mr. and Mrs. John W. Rutledge
Mr. and Mrs. David W.
Ruttenberg



In memory of Patricia Buehler Blankenship

With the passing of Patricia Buehler Blankenship, The Field Museum lost an active supporter and great friend. For more than 30 years Mrs. Blankenship's enthusiasm and generosity enhanced science, exhibitions, and learning programs at the Museum. Mrs. Blankenship was an engaged member of The Founders' Council and the Women's Board. Beyond the Museum, Mrs. Blankenship will be missed as a passionate supporter of many cultural and educational institutions in Chicago and Naples, FL.

Ms. Mignon Dupepe and
Mr. John Snyder
La and Philip Engel
Mrs. Jerome L. Ettelson
Mr. and Mrs. Alexander H.
Faurot
Mr. and Mrs. Kenneth P. Fischl
Sonia and Bill Florian

Timothy and Joyce Greening
Mr. David Patrick Gries
Mr. and Mrs. Edward C. Haffner
Ms. Tonja Rizai Hall
Mr. and Mrs. Dean M. Harrison
Mr. and Mrs. Raymond V.
Hartman
Dr. Malcolm H. Hast

Ms. Cynthia M. Scalzo and Dr. Henry Brown	Mr. John P. Ver Bockel and Ms. Kathleen E. Carbonara	Mr. and Mrs. Robert Clifford	Ms. Patricia J. Hurley
The Schmitt Family Charitable Foundation	Mr. and Mrs. David J. Vitale	Mr. and Mrs. Eric Cohen	Dr. and Mrs. James D. Hurst
Mr. and Mrs. F. E. Schmitt	Ms. Nancy L. Wald	Ms. Christine Courtnage	IBM
Mr. and Mrs. Stephen Schmitt	Mr. and Mrs. Douglas H. Walter	Ms. Camden Crie	Ivy Connect Inc.
Karen and Frank Schneider	The Warwick Foundation	Mr. John Crosson	Ms. Sherry John
Tom and Barbara Schnitzer	Mr. and Mrs. Lon Wehrle	Mr. William R. Darman and Ms. Maria Mau	Lynn and George Jones
Mr. and Mrs. Alan Sebulsky	Mr. Ryan B. Whitacre and Ms. Katherine T. Donaldson	Ms. Rebecca Davidson	Linda M. Jung
Mr. and Mrs. Richard J. L. Senior	Ms. Jean A. White and Ms. Helene Beisecker	The Diamond Family Foundation	Mr. and Mrs. J. George Kambouris
Mr. and Mrs. Stephen H. Sentoff	Mr. William J. White ^T	Dr. Naomi S. Donnelley and Mr. Joseph Butler	Mr. and Mrs. Jordan L. Kaplan
Mr. Robert M. Shafis ^E and Ms. Carol A. Erickson	Ms. Claudia L. Winkler	Susanna and W. Gregory Doolin	Ms. Meg Katzman
Mr. and Mrs. Andrew H. Shaw	Mr. and Mrs. William E. Wolf	Draper and Kramer	Mr. and Mrs. Eric Kauffman
Mr. and Mrs. Neil J. Sheehan	Mr. and Mrs. Tom Wotovich	Mr. and Mrs. Timothy Earle	Ms. Anne Kavanagh and Mr. Terry Smith
Pam and Tom Sheffield/ JS Charitable Trust	Dr. and Mrs. Gerald D. Young, Jr.	Mr. Douglas R. Elliott	Mr. Monty Kehl and Mr. Craig Wilbanks
Alissa and Jonathan Shulkin	Mr. and Mrs. Robert Zentner	Mr. William Ellison and Dr. Naomi Ellison	Mr. David M. Keller and Mrs. Avery W. Keller
Shure Incorporated	\$1,000–2,499	Mr. Harry R. Fair and Mrs. Carolyn E. Jordan	Mrs. Janet I. Kelly
Mrs. Kass F. Sigal	Anonymous (3)	Mr. and Mrs. William Farley	Mr. and Mrs. Eric Kennedy
Mrs. Dolores Silverman	Joan and A. Robert Abboud	Mrs. Juila B. Faust	Charles and Marion Kierscht
Mr. Richard M. Skolly and Dr. Kate A. Feinstein	Ms. Andrea Alexander	Mr. and Mrs. D. Cameron Findlay	Stephanie Kimmel ^E and Mike Conroy
Mr. and Mrs. Benjamin Smith-Donald	American Agricultural Insurance Company	Mr. Edward T. Fishwick and Ms. Mary M. Case	Ms. Holly King
Mr. and Mrs. John B. Snyder	AMSTED Industries	Ginny and Peter Foreman	Mr. and Mrs. John E. Kirkpatrick
Mr. and Mrs. Charles H. Solberg, Jr.	Mr. Thomas Anderson	Dr. Stasia J. Frank-Powers and Dr. Richard J. Powers	Mr. and Mrs. Lester B. Knight III
Ms. Amanda A. Sonneborn and Mr. Peter R. Malecki	Ms. Kaye B. Aurigemma	Freedom Title Corporation	Mr. and Mrs. Martin Jesse Koldyke/Koldyke Family Foundation
Mr. Thomas South	Margaret B. and Harry Axelrod Charitable Trust Fund	Mr. Gary S. Friedlander and Ms. Wendy Sabbath	Martin J. and Susan B. Kozak Fund
Ms. Heather T. Sparling and Mr. Jason Bakk	Mr. and Mrs. Craig Bargowski	Mr. and Mrs. John E. Gepson	Lake Forest Bank & Trust Co.
The Speer Family Fund	Ms. Sandra Bass	Mr. and Mrs. Kanwal Ghaey	Ms. Victoria Lautman
Liz Stiffel	Warren L. Batts	Mr. and Mrs. Julia Goff and Mr. Gregg Goff	Mr. and Mrs. Michael P. Leahy
Mrs. Diane Stilwell-Weinberg	Mr. ^{TD} and Mrs. Charles W. Benton	Mr. and Mrs. Stanford J. Goldblatt	Bertha Lebus Charitable Trust
Mr. ^T and Mrs. Kevin Stineman	Mr. and Mrs. John Bohnen	Mr. John C. Goodall, Jr.	Mrs. Deirdre LeMire
Mr. Kevin L. Stoeckel and Mrs. Emily Heisley Stoeckel	Hyacinth and Le Monte G. ^E Booker, Sr.	Mr. and Mrs. David Greenspahn	Liam Ventures, Inc.
Harvey and Mary Struthers	Ms. Mary N. Bradbury	Mrs. Dorothy Harza	Mrs. Robert R. Lipsky
Ms. Judith B. Sugarman	Scott and Beth Brady	Ms. Kimberlee S. Herold	Mrs. Laura Litten and Mr. John Andre Leduc
Mr. Arthur T. Susman	Mr. and Mrs. Robert B. Breisblatt	The Hickey Family Foundation	Mr. and Mrs. John W. Madigan
Mr. and Mrs. Courtney D. Tedrowe	Mr. Jean-Claude Brizard ^T and Dr. Brooke Stafford-Brizard	Mr. and Mrs. Richard C. Hoffman, Jr.	Cary J. ^T and Lisa Klimley Malkin
Mr. and Mrs. Richard L. Thomas	William and Nancy Brown	Ms. Sandra N. Hoffman	Mr. Dean Mamalakis and Mrs. Louise Mangos-Mamalakis
Jim and Carol Tichy	Samuel and Beth Buchsbaum	Mr. and Mrs. B. Peter Hofmann	Mr. and Mrs. Arthur C. Martinez
Dr. Michael M. Todd	Mr. and Mrs. Willard Bunn III	Ms. Janice Honigberg	Ms. Carolyn Maruggi
Mr. Jeffrey A. Urbina and Ms. Gaye Lynn Hill	Mr. and Mrs. John D. Burns II	Ms. Heather Hsu	Ms. Michelle L. Maton and Mr. Michael C. Schaeffer
Mr. and Mrs. Thomas Veldman	Mr. and Mrs. Michael Burns	Mr. and Mrs. Peter Huizenga	Mr. and Mrs. ^D Frank D. Mayer, Jr.
	Mr. and Mrs. Philip A. Canfield	Tex and Susan Hull	Susan and John McBride
	Mrs. Silas S. Cathcart		
	CDM Foundation		
	Mrs. Hammond Chaffetz		

^T Trustee ^D Deceased ^E Field Museum Employee

Mr. and Mrs. James McClelland	Mr. and Mrs. Norman Perman	Mr. and Mrs. Barry Steinmetz	Mrs. Roberta R. Allen
Mr. Michael McClure	Mr. John O. Peters	The Stanley & Kristin Stevens Family Fund	Dr. and Mrs. Dominic J. Allocco
Bess Catherine McCord and James McCord	Ernst Pierre-Toussaint ^E	Mr. and Mrs. Ivan G. Strauss	Mr. and Mrs. Richard J. Almeida
Mr. and Mrs. Ronald McKee	Mr. and Mrs. Stephen Pinaire	Mr. and Mrs. Blake H. Swift	Mrs. Kristine Anderson
Mr. and Mrs. John A. McKenna	Mr. and Mrs. Harvey B. Plotnick	Mr. and Mrs. James E. Taich	Cheryl ^E and John Aponte
Ms. Patricia M. McKiernan	Mr. and Mrs. Keith Powell	Datin Tan Fui Lian and Datuk Dr. Robert F. Inger	Mr. and Mrs. Barry G. Arnason
Mr. and Mrs. John McLean	Ms. Elaine Prebish	Mr. and Mrs. John B. Templeton	Mr. and Mrs. Daniel Arntzen
Erma S. Medgyesy	Irwin Press and Andra Press	Mrs. and Mrs. Robert W. Thomas	Mr. Richard Assmus and Ms. Leah Welty
The Jill and Paul Meister Charitable Fund	Mr. and Mrs. Shelby Pruett	Dr. Jeffrey M. Tilkin	Mr. Tony Augustine
Ms. Pamela G. Meyer	Mrs. Mary F. Quednau	Tiny Tiger Foundation, Inc.	Mr. Rodney Austin
Peter Mikuzis & Associates LLC	Ginevra ^E and Ben Ranney	Mr. and Mrs. Raymond C. Tower	Richard P. Bail and Janice G. Bail
Mr. and Mrs. Robert R. Moeller	Nancy and Warren Rasmussen	Mr. and Mrs. James A. Tuchler	Ms. Joy L. Bailey
Ms. Cynthia A. Moody	Ms. Stacey Reicherzer	Mr. and Mrs. Richard Uihlein	Mr. Nathaniel Bailey
Mr. and Mrs. Edward J. Mooney	Mr. Walter J. Reinert ^E	University HealthSystem Consortium	Mr. and Mrs. Clyde N. Baker, Jr.
Mr. and Mrs. Carl E. Moore, Jr.	Mr. and Mrs. Miles Ridgway	Van Nice Foundation	Mr. and Mrs. John Ballard
Ms. Mary K. Moreland and Mr. Daniel T. Jenks	Mr. and Mrs. Stephen L. Ritchie	Mrs. Katherine Vennetti	Mr. and Mrs. Randolph C. Barba
Harold M. and Adeline S. Morrison Family Foundation	Roberts Family Foundation	Mr. and Mrs. John Wainwright	Ms. Katherine M. Barnash
Ms. Helga E. Muench	Lynne King Roberts	Walter Family Foundation	Dr. and Mrs. Milo Barrera
Ms. Mary Nalbandian	Mr. and Mrs. Peter W. Rogers	Mr. and Mrs. K. Jay Weaver	Mr. and Mrs. Douglas D. Baum
Jossy and Ken Nebenzahl	Ms. Alicia D. Rollo	Weinberg Family Foundation	Dr. and Mrs. Robert A. Beatty
Mr. Gary L. Neilson and Ms. Trudy A. Havens	Mr. and Mrs. Richard M. Rosenberg	David Weinberg and Jerry Newton	Mr. and Mrs. Eric Beaumont
Mr. and Mrs. John Doane Nichols	D. Roskin	Mr. Michael Weishuhn	Mr. and Mrs. Ronald Benedict
Ms. Lora Nickels ^E and Mr. Thomas Tague	Mr. and Mrs. Edward W. Ross	Ms. Jane Wells and Mr. Burton C. Ferrini	Ms. Sarah Birmingham
North Park University	Mr. H. Nelson Rowley III	Mr. Bennie E. Whiten and Ms. Susan E. Sporte	Mr. and Mrs. Robert L. Berner, Jr.
Leslie and Richard North	Rush University Medical Center	Mr. and Mrs. Raymon Whitney	Mr. and Mrs. Adrian D. Beverly
The Gerald Norton Foundation	Mr. and Mrs. Thomas D. Rutherford	Dr. David E. Willard	Mr. and Mrs. George M. Birmingham
Mrs. Alexandra O'Neill	John and Alice Sabl	Mr. Lawrence J. and Mrs. Margaret V. Witry	Mr. Thomas R. Bland
Mr. and Mrs. William J. O'Neill	Sage Products Inc	Ms. Melanie R. Wojtulewicz and Mr. Tony Crowe	Mr. Nancy L. Bodeen
Dr. Stephanie Ortel	Sahara Enterprises, Inc.	Mr. Joseph Wolnski and Ms. Jane Christino	Ms. Clarisa Bonilla
Mr. Joe Ortiz and Ms. Ana Justice	Sargent Family Foundation	Mr. David Wood	Ms. Kristine Bordenave and Mr. James Feeney
Ms. Sarah R. Packard	Ms. Barbara M. Schleck and Mr. Gary M. Ropski	Geena and Dennis Zaslavsky	Mr. Peter Bowe and Ms. Barbara L. Stewart
Ms. Elizabeth A. Parker and Mr. Keith S. Crow	Ms. Thelma L. Schwartz	Mark H. Zornow, M.D.	Mr. Keith D. Bowersox
Mr. James D. Parsons	Mr. and Mrs. Samuel C. Scott III		Robert and Laura Boyd
Robert K. Parsons and Victoria J. Herget	Stephen A. and Marilyn C. Scott		Mr. Tim Bradford
Mr. and Mrs. Jim Patton	Mrs. Francine Scully-Lippitz and Mr. Herbert Lippitz		Mr. James A. Brainer
Mr. and Mrs. Jerry K. Pearlman	David and Judith L. Sensibar		Mr. Richard T. Brannegan
Mrs. Margaret M. Pendry	Mr. and Mrs. John Simon		Mr. Joshua Juicio Brennan and Mr. Matt Kelley
Mr. and Mrs. Richard S. Pepper	Larry and Maxine Snider		Mr. and Mrs. Michael Bresolin
Mr. and Mrs. Robert P. Perkaus, Jr.	The Solot Family Foundation		Mr. and Mrs. Robert Brightfelt
Mrs. Sandra Perlow	Mr. and Mrs. Jeffery Sommer		Mr. John A. Bross, Jr.
	Mr. and Mrs. Scott E. Sommer		Mr. and Mrs. Steven L. Brown
	State Street Corporation		Dr. and Dr. Scott C. Brun

\$500-999

Anonymous (11)

Mr. and Mrs. John Aalbrektse

Mr. and Mrs. William T. Adkerson

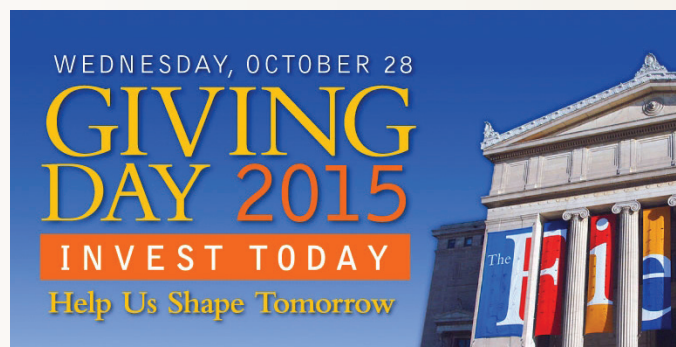
Ms. Eva Adler and Ms. Lorica Adler

Mr. and Mrs. Arjun Aggarwal

Mr. and Mrs. Jackson Brunsting
Mrs. Ellen S. Buchen
Mr. and Mrs. Thomas Buck
Ms. Ann M. Buckley
Mr. and Mrs. Howard E. Buhse, Jr.
Mr. and Mrs. Michael C. Bunnell
Mr. and Mrs. Walter F. Burke
David N. Butler, M.D.
L. L. Butler
Mr. and Mrs. Wiley N. Caldwell
Carney Family Foundation
CFC Family Fund
Chinatown Museum Foundation
Mr. Nathaniel P. Clapp and
Ms. Sarah Dietz
Mr. Ray Colebaugh
Mr. John T. Coletta
Ms. Carol Collins
The Comer Foundation Fund at
The Chicago Community Trust
Pamela Conant
Mr. and Mrs. Dale Cooney
Mr. Edward Cooper
Mrs. Mark Cox and
Ms. Libby Jansen
Mr. William D. Cox, Jr.
Mr. Guy R. Crane
Mr. and Mrs. Jacob Crose
Dr. Dolores E. Cross
Mr. Brian Crowdon
Mr. and Mrs. Bruce Crown
The Honorable Barbara Flynn
Currie
Mr. and Mrs. John A. Daniels
Dr. and Mrs. Lloyd Davidson
Mr. and Mrs. Allen R. Davies
Ms. Laura Davis
Ms. Patricia R. Davis
Mr. and Mrs. Randall Davis
Mr. and Mrs. William L. Davis III
Lori and Bill Dawson
Ms. and Mr. Nancy Dehmlow
Louis^T and Margarette Delgado
Mrs. Uta DeTappan-Staley
Basil and Marcy deTineo
Mr. and Mrs. Blair C. Dickinson
Mr. and Mrs. James S. DiMatteo
Mr. and Mrs. Thomas W.
Doddridge
Mr. and Mrs. David W. Dodson
Dr. Erl Dordal and
Mrs. Dorothy Powers
Ken and Karen Dort
Mr. and Mrs. James
Downey Fund
Mr. and Mrs. John Draper
Ms. Diana L. Duncan^E
Mr. and Mrs. Thomas E. Durica
Mrs. Anne O. Earle
Earth Share
Mark G. Egan and
Katherine Z. Egan
Ms. Cherelynn A. Elliott
Mr. and Mrs. Paul M. Embree
Ms. Erika E. Erich
Mr. and Mrs. Fabio Fabbri
Mr. Brian G. Fahrenbach
Mr. and Mrs. John F. Faulhaber
Mrs. Joan L. Fencil
Mr. and Mrs. Robert H. Fesmire
Ms. Judith A. Findorff
Mr. and Mrs. Peter D. Fischer
Mrs. Sally Fletcher
Mr. and Mrs. William D. Folland
Mrs. Adrian R. Foster
Mr. and Mrs. Charles E. Frank
Mr. and Mrs. Henry S. Frank
Mr. and Mrs. J. Patrick
Gallagher, Jr.
Ms. Jeanne K. Gang and
Mr. Mark Schendel
Ms. Julie L. Gentes
Mr. and Mrs. David A. Gillam
Ms. Nika Gloyeske
Dr. Chris Godell
Mr. and Mrs. William H. Gofen
Ms. Joan Goldstein
Ms. Judith Marx Golub
Mr. and Mrs. James P. Gorter
Ms. Katherine Gory
Mr. Hank Green
Mr. Daniel Greenberg
Mr. and Mrs. John K. Greene
Mrs. Mary M. Grobarcik
Dr. and Mrs. Rolf M. Gunnar
Mrs. Anastasia Gutting
Ms. Suzanne Gylfe
Mr. and Mrs. John A. Hagenah

William M. Hales Foundation
Dr. and Mrs. George S.
Hallenbeck
Mr. and Mrs. Charles W. Hand
Mr. and Mrs. Joel L. Handelman
Ms. Patricia A. Harper
Ms. Jahnna Harvey and
Mr. Joshua Groft
Mary J. Hayes, D.D.S.

Mr. and Mrs. William S. Hoppe
Andrew and Cheri Houha
Rose Houston Charitable
Foundation
Beth A. Humbert-Schmidt^T and
Marc Schmidt
Mr. and Mrs. G. Cleveland
Hunt, Jr.
Mr. Rex M. Hunt



Inaugural Giving Day celebrates anniversary of Museum's first gift

The Field conducted its first-ever Giving Day on October 28. The Museum reached out to friends, old and new, across social media. One hundred and forty-one people, most of them first-time donors, contributed more than \$30,000 in a single day. President Lariviere said, "We are grateful to Trustees Marshall Field V and Jamee Field Kane for their support and leadership in launching this endeavor."

Mr. and Mrs. John A. Hazelwood
Mr. and Mrs. Eugene Heal
Mr. and Mrs. Thomas S. Hebda
Ms. Joyce E. Heidemann
Janet and Bob Helman
Dr. and Mrs. Marvin K. Henry
Mr. and Mrs. Scott E. Hertenstein
Melissa Hilton and
Jonathan Perman
Ms. Geraldine B. Hletko
Mr. and Mrs. Fred Holubow
Mr. and Mrs. Doug Hoogstra
Mr. Glenn Hopkins
Mrs. Elizabeth A. Hopp-Peters
and Mr. Kurt T. Peters

Mr. Steve M. Isaac and
Ms. Judy Olds
Mr. and Mrs. Glynn Isoda
Ms. Cheryl Istvan and
Mr. Keith Daubenspeck
Mr. and Mrs. John Jakob
Mr. and Mrs. Sidney F. Jarrow
Mr. and Mrs. James S.
Jasionowski
Mr. John D. Jawor
Mr. and Mrs. Jerald L. Johnson
Dr. Randon Johnson
Mr. Robert Johnson
Mr. Robert Johnson
Mr. and Mrs. W. Bruce Johnson
Mr. and Mrs. Douglas L. Jones

Mr. Jason Jong	Dr. Victor J. Magar and Ms. Deborah Oestreicher	Mr. Brian Olson	Mr. and Mrs. David A. Ruth
Mr. and Mrs. Christopher Jorgensen	Mr. and Mrs. Stephen J. Malkin	Mr. and Mrs. Norman Olson	Mr. and Mrs. Michael B. Sachs
Mr. Robert Kaplan	Ms. Nina Mann	Mr. Robert I. Osterberg	Mr. Bruce Sagan
Mr. and Mrs. Brian Kelly	Ms. Charlene Marcus	Dr. Lois R. Owens and Ms. Kimberly D. Owens	Mr. Norman L. Sandfield
Mr. and Mrs. Dennis J. Kelly	Peter Marks and Dorothy Mackevich Marks	Ms. Lisa J. Pattis	Mr. and Mrs. Fred Savaglio
Mr. Jamie Kelly ^E	Ms. Carmen Maso	Mr. Scott Pattullo and Ms. Jenny A. Johnson	Mr. and Mrs. John T. Schaff
Ms. Katharine Kelly	Mr. and Mrs. Richard P. Mayer	Mr. and Mrs. William B. Pearce	Dr. and Mrs. Morton O. Schapiro
Mr. Thomas Kichler	Mr. Raymond McBride	Mr. and Mrs. Frank Pensiero	Mr. and Mrs. Timothy J. Schilling
Mr. and Mrs. John J. Kinsella	Ms. Casey McCarthy	Mr. Sheldon Perlow and Mrs. Sandra Allen	Mrs. Jennifer Schmidt and Mr. Daniel Curry
Mr. and Mrs. Thomas L. Kittle-Kamp	Mrs. Michelle McCarthy	Ms. Bonnie S. Peters	Mrs. Lawrence K. Schnadig ^D
Dr. and Mrs. Jay H. Kleiman	Mr. and Mrs. Mark J. McCarville	Mrs. Sara Pfaff	Schnadig-Belgrad Foundation
Mr. Barry Kohl	Ms. Nancy A. McDaniel	Ms. Katherine Philippe	Mr. Richard Schreiner
Dr. and Mrs. Robert Kohrman	Mr. Aaron McGee	Mr. and Mrs. Burt Pickard-Richardson	Mr. and Mrs. Thomas J. Schultz
Ms. Valerie Kolesar	Ms. Agnes McKinney	Mr. and Mrs. Craig A. Pickenpaugh	Dr. Neena B. Schwartz
Mr. and Mrs. John E. Koliopoulos	Mrs. Leslie Gantz McLamore and Mr. Scott McLamore	Mr. and Mrs. Robert L. Pierce	Mrs. Marilyn L. Schweitzer and Mr. Michael A. Firman
Mr. Paul R. Kressin and Ms. Kay Lee	Ms. Joyce Meggett	Mr. and Mrs. Louis R. Pignotti, Sr.	Mrs. Dona Scott
Mr. and Mrs. Larry Krueger	Dr. Steven A. Melnyk	Mr. John Pincenti	Mr. and Mrs. G. Curtiss Shaffer
Mr. and Mrs. Michael J. Kuehl	Mr. and Mrs. Robert C. Merrick	Ms. Nancy Plax and Mr. Steven Schwartzman	Ms. Kate M. Sheehy
Mr. and Mrs. Alfred F. Kugel	Dr. and Mrs. Ernest E. Mhoon, Jr.	Mrs. John W. Pocock	Sidley Austin LLP
Mr. William H. Kurtis ^T and Ms. Donna La Pietra	Mr. and Mrs. Jan Miecznikowski	Ms. Cynthia Polayes	Louis and Nellie Sieg Fund
Emerson and Martha Lacey	Mr. and Mrs. Michael E. Mikolajczyk	Mr. and Mrs. Charles S. Potter, Jr.	Ms. Bette H. Sikes
Ms. Deborah M. Lader and Mr. Michael L. Silver	Dr. and Mrs. Robert P. Miller	Ms. Lee B. Price	Mr. and Mrs. Alejandro Silva, Jr.
Mr. and Mrs. Dirk B. Landis	Mr. and Mrs. Thomas M. Monahan	Mr. and Mrs. John B. Priest	Mr. Daniel H. Silverstein
Mr. William W. Lane	Mr. Robert V. Monfort	Ms. Kristin Prohl	Mr. and Mrs. Jeffrey Skender
Mr. Albert K. Larsen	Mr. and Mrs. Gerald W. Moore	Mr. and Mrs. William Radzevich	Ms. Maureen M. Slavin
Mrs. Winfred M. Leaf	Mr. and Mrs. Leon W. Moore	Mr. and Mrs. Todd Range	Mr. and Mrs. Robert W. Smolen
Mr. William M. Lee, Jr.	Mr. Peter Moran	Mr. and Mrs. Mark A. Ratner	Ms. Peggy Snorf
Mr. Glenn Lefkovitz	Mr. and Mrs. John A. Morris	Ms. Mae Rhodes	Mr. and Mrs. Dan W. Snyder, Jr.
Mr. and Mrs. Sigmund Lefkovitz	Vijai K. Moses and Dr. Raj Lartius	Mr. Richard W. Richardson	Mr. Keith Solomon and Ms. Elana Beckerman
Mr. and Mrs. Donald Lewis	Ms. Dorothy Mulholland	George Rimnac and P. Rimnac	Mr. and Mrs. Ron Sonenthal
Mr. and Mrs. Robert E. Lindgren	Mr. and Mrs. James G. Murphy	Mr. and Mrs. Richard H. Rinehart	Mr. and Mrs. James Stanczak
Mr. and Mrs. Bert H. Lindstrom	Mr. and Mrs. James Murray	Ms. Marilyn Rohn	Mr. and Mrs. Leon C. Stecher
Ms. Kristin Lingren	Mr. and Mrs. John Nalbach	Mr. James Rollins	Ms. Dawn Stiers
Mr. and Mrs. Mark A. Livengood	Mr. and Mrs. Neil C. Nelson	Mr. Howard J. Romanek and Mr. Irwin Romanek	Mrs. Harriet C. Stone
Mr. Joseph F. Lizzadro and Dr. Jennifer Lebbin	Mr. and Mrs. Jonathan B. Newcomb	Mr. and Mrs. Harry B. Rosenberg	Steven Strohmeier ^E
Mr. Dominic Lomoro	Ms. Marjorie Newman	Rosenson Foundation	Mr. and Mrs. Theodore A. Struve
Mr. and Mrs. William S. Macdonald	Mr. and Mrs. Ray E. Newton	Mr. and Mrs. Robert J. Ross	Ms. Usha Subramanian ^E and Mr. Deepak Raghunathan
Mr. and Mrs. Bernard A. Mack, Jr.	Ms. Mary C. Niehaus	Mrs. Donald I. Roth	Mr. and Mrs. Scott Swanson
Mr. and Mrs. C. Patrick MacLeod	Ms. Anne Nobles and Mr. David L. Johnson	Mrs. Elizabeth D. Rothermel	Mr. and Mrs. Gregory T. Taylor
	NRG Energy		Mr. and Mrs. R. F. Teerlink
	Mr. and Mrs. Ivan M. Odom		Mr. and Mrs. Mitchell Theys
	Mr. Christopher Olofson		Mr. and Mrs. Nick Thomas

Dr. Margaret B. Tinzmann and
Mr. Otto Tinzmann
Ms. Sally L. TreKell
Mr. and Mrs. John P. Tubutis
Mr. and Mrs. John E. Tulley
Mr. and Mrs. Enrique J. Unanue
Murray & Virginia
Vale Foundation
Mr. Peter M. Vale
Mr. and Mrs. James Valley
Mr. and Mrs. J. V. Van Cura, Jr.
Mr. and Mrs. John E. Van Horn
Mr. Shawn K. VanDerziel^E and
Mr. Jay Clarke
Mr. and Mrs. Nicholas
VanHolsbeke
Mr. Ryan VanHolsbeke
Ms. Joan Walton-Moore
Mr. and Mrs. Eric D. Wanger
Robert Wanger
Mr. and Mrs. Ed Watkins
Mr. and Mrs. Gary W. Watt
Mr. and Mrs. Brian B. Whalen
Mrs. April R. Wilson
Mr. and Mrs. Gary Wilson
Mr. and Mrs. Gregory Wintroub
Mr. Robert F. Wisniewski
Carl Wolf and Jennie Sochon
Michael Wright
David and Kay Wulf
Mrs. Nancy Wulfers
Mr. Gerge R. Wunder and
Ms. Carole E. Mattes
Mr. Kenneth A. Youga
Mrs. George B. Young
Mr. and Mrs. Phillip C. Zarcone
Mr. and Mrs. Hugh Zentmyer
Mr. and Mrs. Bruce Ziegler
Mr. and Mrs. William B.
Zigterman

\$250–499

Anonymous (13)
Mr. and Mrs. Brian Abrams
Mr. Roger S. Adamek
Mr. Cyrus H. Adams
Mrs. Keene H. Addington II
Barbara and Steven Adelman
Mr. and Mrs. David L. Ader
Ms. Susan S. Adler

Ms. Julieta Aguilera
Mrs. John J. Ahearne
Ms. Judith A. Akers
Mr. James Albertone and
Mr. Robert Cunningham
Mr. and Mrs. Thomas J. Allison
Mr. and Mrs. Michael Altman
The Anderson Law Firm, LLC
Mr. Joshua Anderson
Mr. and Mrs. Matthew D.
Anderson
Mr. and Mrs. Stephan Angel
Chaiyaroj Anuchitworawong
Ms. Ruth Archer and
Mr. Jim Helke
Mrs. Rebecca I. Armatis-Furr
and Mr. Jonathan Furr
Mr. and Mrs. Bruce T.
Armstrong
Ms. Mary M. Armstrong
Mr. and Mrs. Carl Aronson
Mr. and Mrs. Delbert W.
Arsenault
Ms. Ann Griffith Ash
Mr. and Mrs. John Atkinson
Mr. and Mrs. Cooper Babich
Mr. and Mrs. William Bach
Mr. and Mrs. Kevin Backus
Mr. Bruce Baker
Mr. and Mrs. Dan Baker
Mr. and Mrs. Gregory Ball
Dr. Eugene L. Balter and
Ms. Judith R. Phillips
Mr. and Mrs. Mervin R. Barnes
Ms. Frances Barrett
Dr. Susan Barrett
Carlo Basile and Kim Basile
Ms. Lauren Bateman
Alben F. Bates and
Clara G. Bates Foundation
Ms. Russena Bautista

Mr. John M. Beal
Mr. William T. Beck and
Ms. Doreine Carson
Mr. and Mrs. Robert D. Becker
Reverend and Mrs. William C.
Beckmann
Mr. and Mrs. William Bedford
Mr. and Mrs. Jeffrey Beech
Ms. Nancy Behrendt
Mr. Roy Benedek

Mr. and Mrs. Stephen E.
Benefiel
Arlene and Wayne Bennett
Mr. Matthew Benoit and
Dr. Cathleen Dohrn
Mr. and Mrs. Peter B. Bensinger
Mr. and Mrs. Robert A. Benziger
Dr. and Mrs. Michael Bercek

Dr. and Mrs. Henry S. Bienen
Dr. Michael D. Bishop
Mr. and Mrs. Frank L. Bixby
Mr. and Mrs. Richard B. Black
Mr. James Blanchet
Mr. and Mrs. Jay S. Bleecker
Mrs. Joan Blew



Hyenas find new home

In 2015, The Field Museum launched Project Hyena Diorama, a six-week online crowdfunding initiative. The campaign resulted in \$155,000 from more than 1,500 donors around the world. Many supporters learned about Project Hyena Diorama through The Brain Scoop, hosted by Chief Curiosity Correspondent Emily Graslie. The phenomenal public support funded the creation of the Museum's first habitat diorama in more than 60 years. The Field's four striped hyena specimens were originally collected in 1896 and mounted in 1899 by Carl Akeley. Project Hyena Diorama created new attention for the Museum and its famous habitat dioramas.

Mr. and Mrs. William Bergland
Mr. and Mrs. Tom Beris
Dr. and Mrs. Leonard Berlin
Dr. and Mrs. Victor M. Bernhard
Mrs. Lieselotte N. Betterman
Mr. and Mrs. Kevin Betton
Mr. and Mrs. Sam Bianco
Mr. William E. Bible
Ms. Lois J. Bider

Ms. Katherine Bliss and
Mr. Jerry James
Mr. Jan Blok and
Ms. Laura Melcher
Mr. and Mrs. Stephen J. Bloom
Mr. and Mrs. Irwin A.
Blumensaadt, Jr.
Mr. Jerry V. Bobek, Jr.
Mr. and Mrs. Anthony Bochniak
Ms. Georgia Bockos

Mr. and Mrs. Erwin F. Bogs
 Dr. Therese M. Bogs and
 Mr. W. Haser
 Mr. and Mrs. George Bohling
 Mrs. Carl J. Bohne, Jr.
 Mr. Tim Bolduc
 Ms. Brianne Bolin
 Mr. Daniel A. Bolm and
 Mrs. Peggy J. Keating-Bolm
 Mr. and Mrs. Thomas C. Boltik
 Dr. and Mrs. Michael
 Bommarito
 Mr. Marcello Bondurant
 Mr. and Mrs. Laurence O.
 Booth
 Ms. Melissa Bornstein
 Mr. and Mrs. David Borosh
 Mr. Loren Bowns and
 Ms. Cynthia Bowns

Ms. Lynn Bromstedt
 Mr. and Mrs. Jeff Brosdal
 Ms. Shannon E. Brown
 Ms. Shirley Brown-Berchou
 Mr. and Mrs. Archibald T.
 Bryant
 Mr. and Mrs. Clint Bucher
 Mr. and Mrs. Joshua T.
 Buchman
 Dr. Stephen J. and
 Mrs. Susan P. Buck
 Ms. Jo Ann Budde
 Mr. Timothy J. Burroughs and
 Ms. Barbara Smith
 Mr. and Mrs. Michael Busch
 Mr. Paul Butler Diaz, Jr.
 Eileen Cahill and Family
 California Academy of
 Sciences

Mrs. Jane Dunlap Carver
 Mrs. Constance Casey
 Mr. and Mrs. Scott Caudell
 Ms. Michele Chaffee and
 Mr. Adam Nordin
 Mr. Benjamin Chang
 Mr. and Mrs. Wilfred P.
 Chapleau III
 Mr. and Mrs. Walter Chase
 Mrs. Susan W. Chemler and
 Mr. Tom Chemler
 Mr. and Mrs. Thong M. Cheng
 Mr. Thomas Chin and
 Ms. Cheryl Yuen
 Mr. and Mrs. James N. Chodora
 Mr. and Mrs. John A. Chojnicki
 Ms. Emily J. B. Christian and
 Mr. John Christian
 Mr. and Mrs. R. Lee Christie

Mr. and Mrs. Joseph Cofield
 Mr. and Mrs. Martin J. Cohen
 Mr. William S. Cohen
 Mr. and Mrs. Stanley Cohn
 Thomas and Annette Cole
 Mr. Jonathan Colledge
 Ms. Dorothy A. Collin
 Ms. Kathleen Collins and
 Mr. Charles Newell
 Dr. and Mrs. Roosevelt D.
 Collins
 Mr. and Mrs. Terrence Collins
 Ms. Joan Colmar
 Mrs. Gladys E. Connolly
 Mr. Edmond Constantinescu
 Mr. Mark D. Contratto
 Mr. and Mrs. Mercer Cook
 Mr. Blake Cooper and
 Ms. Sarah Keedy



Field recognized for energy and environmental design

The Field became one of only a few museums in the nation to earn LEED (Leadership in Energy and Environmental Design) Gold certification for Existing Buildings Operations & Maintenance. The certification is a major achievement for a 94-year-old building with more than 480,000 square feet. Renovations in the past few years, including the installation of solar panels on the roof and the implementation of a composting program, have improved efficiency and reduced waste at the Museum. The Field is proud to be an environmentally-conscious institution in its daily operations.

Mrs. Barbara A. Boyer
 Dr. and Mrs. Bruce H. Boyer
 Mr. and Mrs. Dennis E. Bozych
 Dr. and Mrs. David Bradley
 Ms. Maria Brandon and
 Mr. Randy Burrow
 Tim^E and Julie Bratley
 Mrs. Marie Brelin
 Ms. Marjorie Brennan
 Christina Breslow^E
 Mr. and Mrs. Mark E. Brickman
 Mr. Steven Brint
 Mr. Charles T. Brockmann

Ms. Judith A. Caloud
 Ms. Marie T. Campagna
 Mr. and Mrs. Michael S.
 Canmann
 Mr. Leslie P. Capri
 Mr. and Mrs. Thomas M.
 Carmazzi
 Mrs. Robert Adams Carr
 Mr. and Mrs. Robert E. Carroll
 Ms. Elizabeth A. Carter
 Mr. and Mrs. Steven C. Carter
 Mr. and Mrs. Milton Blouke
 Carus

Ms. Marylinn Chrystal and
 Ms. Sarah Chrystal
 Mr. and Mrs. Howard Chun
 Mrs. Margaret R. Chung
 Ms. Josephine S. Chyatte
 Mr. and Mrs. Randall Clark
 Mr. and Mrs. Steven L. Clark
 Mrs. Diane D. Clarke
 Mr. and Mrs. Albert C. Claus
 Sharon L. Cline and
 Robert W. Tatro
 Mr. and Mrs. John E. Clisham
 Mr. and Mrs. Gary Cloudman
 Mr. Benjamin A. Coats

Mr. Marc Cooperman and
 Mrs. Christine Igo
 Ms. Julia Corcoran and
 Mr. Hector Melin-Aldana
 Mr. Mathew A. Cotton
 Ms. Noreen Cohan and
 Mr. Donald L. Simmonds
 Mr. and Mrs. Thomas W. Coyle
 Ms. Susan Craft
 Mr. and Mrs. Christopher M.
 Crane
 Ms. Susan M. Crowell and
 Ms. Kathleen Cooke
 Ms. Yvonne M. Curbis
 Mrs. Louise H. Curry

Dr. and Mrs. Arthur W. Curtis, M.D.	Mr. and Mrs. Robert S. Dobis	Ms. Irene Falout	Mr. James A. Galloway
Mr. and Mrs. David V. Curtis	Leonard and Patricia Dominguez	Mr. and Mrs. James Fanuzzi	Mr. Donald C. Gancer
Dr. and Mrs. Anthony B. D'Souza	Mr. and Mrs. John Donato	Mr. and Mrs. W. J. Farrell	Dr. Ronald J. Ganellen and Dr. Natalia S. Pascal
Mr. and Mrs. James M. Daly II	Mr. and Mrs. Joseph E. Doninger	Mr. Carl B. Fausey	Mr. and Mrs. Roger Gansauer
Robert and Cathy Daly	Mr. and Mrs. Richard Doonan	Ms. Julie A. Federico and Mr. Alton Jay Mitchell	Ms. Jan Garcia and Ms. Natalia Guzman
Mrs. Kenneth W. Dam	Mr. Michael P. Doran	Dr. Frederick N. Fedorchak and Ms. Veronica T. Kacmar	Ms. Kendra Garstka
Mr. and Mrs. John M. Damas	Mr. and Mrs. Keith Dorman	Dr. John D. Ferguson and Ms. Elizabeth H. Zimmerman	Mr. and Mrs. John Gately
Mr. and Mrs. Ron Damashek	Mr. George R. Dowell	Mr. and Mrs. Jose L. Ferrer	Mr. James Gaughan and Ms. Ann Hoffman
Mr. Michael Danforth and Ms. Eva Nielsen	Ms. Tanja Dower	Mr. and Mrs. Raymond R. Fessler	Ms. Hildegard H. Geiger
Jackie and Donald R. Dann	Mr. and Mrs. James Downey	Mr. and Mrs. Conrad T. Fialkowski	Mrs. Marylou Georgis
Mr. and Mrs. Robert J. Darnall	Mr. V. Michael Drayton	Mr. and Mrs. Robert W. Fick	Mr. and Mrs. Isak V. Gerson
Ms. AJ Darneal	Mr. Thomas A. Drebenstedt and Ms. Kathy Chilis	Dr. and Mrs. Terrance E. Fippinger	Mr. and Mrs. William Gillespie
Mr. and Mrs. Bruce Davidson	Mr. George D. Driggers	Mr. and Mrs. James G. Fitzgerald	Mr. Peter Ginn
Kent and Susanne Davis	Mr. and Mrs. Harry W. Drucker	Mr. and Mrs. Dale Fleming	Ms. Mandy Gittler
Mr. and Mrs. Stan Day	Mr. Joseph H. Drummond	Mr. and Mrs. Peter L. Flemister	Mr. and Mrs. Thomas F. Glennon
Mr. and Mrs. Dennis De Bruler	Mr. Michael S. Dublak and Mrs. Sharon M. Authier	Mr. Geoffrey A. Flick	Ms. Paula Glitman and Mr. Doug Stone
Mr. Pierre De Smul and Dr. Carol De Smul	Ms. Kristin Dudek	Ms. Dorothy M. Flisk	Ms. Maureen Glynn
Mr. and Mrs. William W. Dean	Ms. Janet M. Dudgeon	Mr. Kenneth Floody and Ms. Elizabeth Freebairn	Mr. Richard Gnaedinger
Mr. and Mrs. Mark D. Deaton	Mr. and Mrs. Ferne L. Dungan	Mr. Jeffrey Floresca	Ms. Roxanna Goebel
Ms. Diana L. DeBoy	Mr. Laurence Dunn	Dr. James and Martha Foght	Mr. and Mrs. Samuel D. Golden
Mrs. and Mr. Anne DeCastro	Ms. Diane Dyer-Neely	Mr. Liam T. Ford and Ms. Ann R. Weiler	Rabbi Douglas H. Goldhamer and Ms. Peggy L. Bagley
Mrs. Carla M. Dehmlow	Ms. Glenna R. Eaves and Mr. Christopher J. Boebel	Mr. and Mrs. William A. Forgette	Ms. Mary Golf
Mr. Jack Delaney	Ms. Diane S. Edlefson and Mr. Phil Harler	Mr. and Mrs. James W. Forhan	Mr. and Mrs. O. R. Goltra
Ms. Judith A. DeLeon	Ms. Margaret M. Eiden	Mr. and Mrs. George W. Forrest	Mrs. Carolina Goncalves
Mr. and Mrs. Charles Dennehy	The Robert G. Eiserman Family	Mr. and Mrs. James E. Forrest	Mr. and Mrs. Gene M. Gooding
Mr. and Mrs. Shawn Dennison	Mr. J. Thomas Eller	Mr. and Mrs. Victor Fraccaro, Jr.	Mr. and Mrs. Alex Gordon
Dr. and Mrs. Eugene R. DeSombre	Ms. Lilly Eng	Dr. and Mrs. Alvin L. Francik	Mr. Gary Gordon and Ms. Marilyn Hirsch
Ms. Doris Devine	Mr. and Mrs. Wayne Eng	Mr. and Mrs. William D. Franz	Ms. Eve M. Gorman
Mr. William Dewoskin	Mr. and Mrs. Dan Engel	Mrs. Anne Fraumann	Mrs. and Mrs. Kay A. Goss
Mr. Heath Deyo and Ms. Bevin Desmond	Mr. Mark Engels	Mr. and Mrs. Earl J. Frederick	Ms. Susan Gotsch
Mr. and Mrs. Philip Diamond	Mr. and Mrs. Carl England	Mr. and Mrs. Sadgio Fredianelli	Mr. and Mrs. Numa R. Gottardi-Littell
Mr. and Professor William Diaz	Ms. Lynne England	Mr. Gerald Freedman and Ms. Elizabeth Sacks	Mr. Robert Gourley
Ms. Amy T. Dickinson and Mr. Jim Futransky	Philip Enquist and Joanna Karatzas	Mr. and Mrs. Paul Freehling	Ms. Patricia A. Gowland
Ms. Leonora Dickson	Mr. Gary Eppling	Mr. and Mrs. John F. Freund	Terry Grace and Judith Gaietto-Grace
Ms. Louise E. Dieterle	Mr. and Mrs. John B. Evans	Dr. Karen Friedman	Mr. and Mrs. William Graham
Ms. Samantha Dietz	Dr. and Mrs. Richard H. Evans	Mr. and Mrs. David Fryrear	Dr. Lance Grande ^E
Mr. and Mrs. William Differding	Mr. and Mrs. Scott Evans	Mrs. Muriel G. Fulton	Mr. and Mrs. Tom Graslie
Ms. Patricia Ann Dihel	Ms. Diana H. Fagan	Ms. Katharine Funkhouser	Mr. Brian Gray and Ms. Melissa Greenberg
Dr. and Mrs. John R. Dimar	Mr. and Mrs. Thomas Fahrenbach	Dr. Sylvia E. Furner	Mr. and Mrs. Richard Gray
Mr. William D. Dini	Mr. and Mrs. Albert J. Falasz	Mr. and Mrs. John Gage	Mr. James C. Green
Mr. and Mrs. Paul F. Dittmann	Mr. and Mrs. Arthur Falk	Mr. Gregory J. Gajda	
Ms. Laurita Doane	Mr. Daniel G. Falotico		

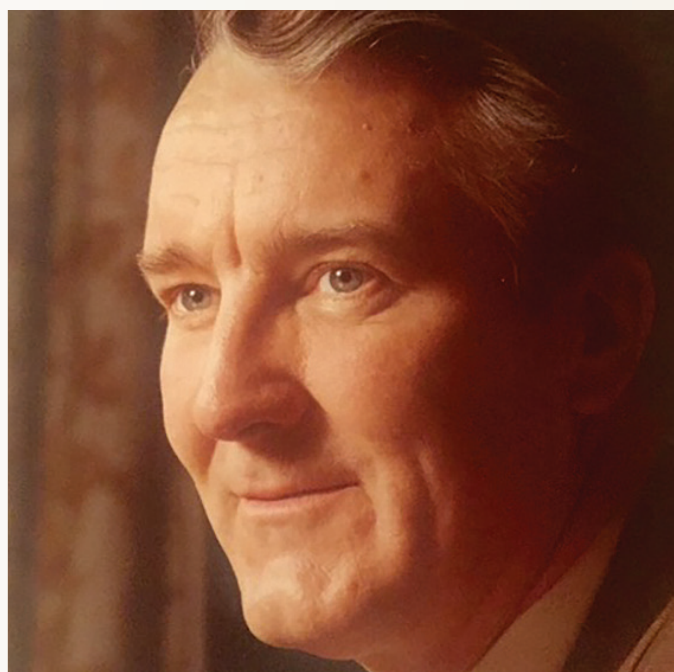
Mr. and Mrs. William W. Green III	Mr. and Mrs. Ralph Harris	Mr. Pat Hughes and Ms. Brigid Hughes	Mr. Zachary Kanarr
Mr. and Mrs. John Greenwald	Ms. Joyce A. Harty	Mr. and Mrs. Phillip D. Hulben	Dr. Mary G. Kane and Mr. Vern Kerchberger
Mr. and Mrs. Mark J. Greenwood	Mr. and Mrs. Edward D. Hatcher	Human Resources Management Association of Chicago	Mrs. Lily Kanter
Mr. Brian Gregory	Mr. and Mrs. Martin F. Hauselman	Mrs. Diane S. Humphrey	Mr. and Mrs. John A. Karoly
Leslie Grider and Erin Grider	Mr. and Mrs. Allan Hausfeld	Mr. and Mrs. James W. Hunt	Mr. and Ms. Joseph Kartheiser
Ms. Catherine A. Griffin	Mr. Thomas Hawkins	Mr. and Mrs. Jeffrey L. Hunt	Ms. Verla Kasmerchak
Mr. and Mrs. Robert M. Grimm	Mr. and Mrs. Duncan Healy	Mr. and Mrs. Christopher Hurley	Ms. Karen Kass and Ms. Kimberly Spagui
Mr. John F. Grobe	Lawrence R. Heaney, PhD ^E	Mr. and Mrs. Mark A. Isaily	Mr. and Mrs. William O. Kasten
Mr. Larry Grote	Mr. Michael Heaney	Mr. and Mrs. Roland L. Jabotte	Ms. Kimberly Kavala and Mr. Brian Smith
Mr. Steve Guajardo	Mr. and Mrs. John Heaphy	Mr. and Mrs. Jeffrey Jackson	Ms. Ami Kawanaga and Mr. Thomas Kurowski
Ada Mary Gugenheim and Jon N. Will	Mr. and Mrs. F. Thomas Hecht	Dr. Judith M. Jackson and Dr. Dannielle G. Jackson	Mr. and Mrs. Kevin Kearney
Mr. Alfred H. Guhl	Mrs. Bette Heide	Kristen and Josh Jacobs	Mr. and Mrs. Michael G. Keck
Ms. Jennifer Guskey	Mr. and Mrs. David J. Height	Mrs. Marian Jacobson	Ms. Denise A. Kelley
Mr. Antonio Gutierrez and Ms. Brenda Payan	Mr. and Mrs. John Henderson	Mr. and Mrs. John Jacoby	Mr. and Mrs. Austin Kelly
Mr. and Mrs. Dean L. Haas	Mr. and Mrs. Jack Henkin	Mr. and Mrs. Robert A. Jahnke	Mr. and Mrs. William H. Kelly, Jr.
Mr. Robert A. Habermann	Mr. and Mrs. James P. Hepp	Dr. Kenneth James	Ms. Miriam J. Kelm
Mr. Stanton T. Hadley	Mr. and Mrs. Paul M. Herkes	Mr. and Mrs. Paul A. James	Gaye Lovett Kelsey
Mr. and Mrs. Mervin D. Hagen	Mr. and Mrs. Joseph Hernandez	Ms. Janice A. Jarnholm	Mr. and Mrs. Terrence Kennedy
Mr. and Mrs. John Hague	Mr. Paul D. Hewitt	Mr. and Mrs. Andrew M. Jarosz	Mr. and Mrs. Harrison Kennicott
Mr. and Mrs. Joshua D. Hale	Mr. and Mrs. Tim Heyen	Ms. Catherine A. Jaselskis and Mr. Gary G. Alberts	Dr. Susan B. Kern and Ms. Alex Yamron
Ms. Holley Hall	Mr. and Mrs. Luis Hidalgo	Mrs. and Mr. Nadia B. Jelinek	Ms. Kate T. Kestnbaum
Mr. Christopher J. Hallett and Ms. Jackie Lustig	Mr. Daniel P. Hidding	Mr. and Mrs. Terrence J. Jelinek	Mr. Kevin Ketvertis
Mrs. Elizabeth W. Halpern	Mr. and Mrs. Howard E. Hight	Ms. Nancy M. Jimenez and Mr. Rafael A. Jimenez	Dr. and Mrs. Alan C. Keyes
Ms. Anthea Halsey	Mrs. Melissa E. Genova Hill and Mr. Joel Hill	Ms. Judy Johanson	Mr. Brad Kimme and Ms. Sara Phalen
Mr. and Mrs. Preston Hamilton	Mr. Peter Hill	Mr. Carl W. Johnson and Mrs. Laura M. Bloom-Johnson	Mr. and Mrs. Edwin F. Kindig
Mr. Bryan Hamm	Mrs. Edward M. Hines	Dr. Maryl R. Johnson	Mr. and Mrs. James P. King
Mr. Michael Hammerman	Mr. Dan Hislop	Dr. and Mrs. Robert E. Johnson	Mr. James R. King
Mr. and Mrs. Thomas J. Hammerman	Ms. Kathleen Hoban	Mr. and Mrs. Daniel H. Jones	Ms. Niamh King
Mr. and Mrs. M. Hill Hammock	Mr. and Mrs. Thomas H. Hodges	Ms. Erma Jones and Mr. Philip Friedman	Mr. and Mrs. Albert Kircher, Jr.
Mr. and Mrs. Michael S. Hammond	Mr. and Mrs. James M. Hohner	Mr. and Mrs. Kenneth P. Jones	Mr. and Mrs. James R. Kirk
Dr. Lanshan Han and Dr. Lili Du	Edward and Jo Ann Holba	Mr. and Mrs. Robert A. Jones, Jr.	Mr. and Mrs. William T. Kirk, Jr.
Mr. and Mrs. John S. Hand	Mr. Craig J. Holderness	Mr. Richard W. Josed	Ms. June A. Kirwan
Dr. Chester S. Handelman and Mrs. Phyllis Handelman	Mr. and Mrs. Dean T. Honda	Mr. and Mrs. Paul R. Judy	Mr. and Mrs. Frank L. Klapperich, Jr.
Mr. Larry L. Hanes	Honeywell International	Mr. and Mrs. Richard Juro	Mr. Mark Klausung
Mr. Joseph R. Hanley and Ms. Kristy L. Mardis	Mr. and Mrs. Joel D. Honigberg	Mr. and Mrs. Tom F. Kacprowicz	Ms. Anne V. Klecka
Dr. Luke Hanley and Ms. Debran Rowland	Mr. Thomas A. Hootman and Ms. Pamela J. Sisler	Miss Judith Kadish	Mr. Keith Kleehammer and Ms. Cheryl Sweeney
Mr. Mel Harch	Mr. and Mrs. Thomas J. Hope	Ms. Jill M. Kainu	Mr. Jim Kline
Mr. Andrew Hardy	Mr. and Mr. Thomas Hopkins	Ms. Sandra Kalembo	Dr. and Mrs. Thornton C. Kline, Jr.
Mr. Jaime Harmon and Ms. Michelle Clark	Mr. and Mrs. Michael L. Horsley	Ms. Kathleen G. Kallan	Mr. Joseph J. Klug
Harms Family Fund	Mrs. Laurie W. Howick	Dr. Sona Kalousdian and Dr. Ira D. Lawrence	Dr. Edward T. Klunk
Ms. Mattie H. Harris	Ms. Chishiang Hsu and Mr. Taylor Tian	Mrs. Karen A. Kammer	Ms. Judith L. Knie
	Mr. and Mrs. David Hubbard		
	Dr. and Mrs. Michael S. Huckman		

Mr. Timothy B. Knuth and
Ms. Elizabeth Tate
Ms. Lottie J. Kobza
Ms. Sibyl Kobza and
Ms. Laura L. Kobza
Mr. and Mrs. Melvin J. Koenigs
Mr. and Mrs. John Kohler
Mr. and Mrs. Shohei Koide
Mr. and Mrs. Robert D. Kolar
Mr. Ernest Konker
Mr. Stanley L. Korwin and
Ms. Nancy J. Hall
Mr. and Mrs. Robert S. Kosin
Mr. Joseph A. Kosinski
Mr. and Mrs. Kelly Kost
Mr. John A. Koten
Mr. Thomas Koutsouf and
Ms. Renee Sotos
Ms. Regina Krakowski
Ms. Nancy Kras
Mr. and Mrs. Jeffrey M. Krasner
Mr. Rob Krause and
Mrs. Lisa W. Jones
Mr. and Mrs. James R. Krick
Mr. and Mrs. Jeffrey A.
Kriezelman
Mrs. William J. Kristy
Mr. and Mrs. Brian Krob
Mr. and Mrs. Larry S. Krucoff
Mr. James M. Krueger
Mr. Brian L. Kruse and
Ms. Alyson Koblas
Mr. and Mrs. David Kuck
Mr. Satyajit Siddharth Kumar
Ms. Jennifer Kunkel and
Ms. Brook Enhelder
Mr. and Mrs. Walter W.
Kurczewski
Ms. Lynne La Jone and
Mr. Chris Mollet
Mr. and Mrs. Philip E. Lake
Mr. Charles Lamb
Mr. Craig Landon
Mr. Frederic S. Lane
Ms. Susan Lannin and
Mr. Albert Ettinger
Ms. Christine J. Laperuto and
Mr. William J. Roznowski
Mr. and Mrs. Charles W. Larsen
Mr. and Mrs. David R. Larson
Ms. Cheryl Laske

Mr. Anthony Lauer
Ms. Linda S. Lauterbach
Ms. Cara J. Law
Ms. Michelle D. Layman
Mr. and Mrs. David C. Lazar
Ms. Cathy G. Lazaroff
Mr. and Mrs. John H. Leach
Mr. Aaron Lebovitz and
Ms. Donna Myers
Ms. Anita Lees and
Ms. Lisa Lees
Mr. Paul A. Lehman and
Ms. Ronna S. Stamm
Mr. and Mrs. Kurt A. Lentsch
Mr. and Mrs. David L. Lentz
Mr. and Mrs. Vincenzo O. Leone
Mr. Jack Lerman and
Mrs. Elise Pike Lerman
Mr. Barry Lesht and
Ms. Kay Schichtel
Ms. Joanna Lesna and
Mr. Darryl Wilson
Mr. and Mrs. Gary Lessenberry
Mr. Jay S. Levey
Mr. and Mrs. John G. Levi
Ms. Carolyn S. Levin
Mr. and Mrs. Kenneth C. Lewin
Mr. and Mrs. Nick Lewis
Lewis-Sebring
Family Foundation
Mr. Gilbert Lichstein and
Mrs. Ruth Czarnecki-Lichstein
Dr. and Mrs. David B. Lieb
Mr. Charles N. Lindsey and
Mr. Zikri Yusof
Mr. and Mrs. William F. Lloyd
Mr. and Mrs. J. William Locke
Mr. Brian Lockner
Mr. Charles Lofgren
Dr. and Mrs. Eugene B. Loftin
Mr. and Mrs. Dermot Logan
Ms. Marie Lona
Shery and Mel Lopata
Ms. Holly Lowe
Mr. and Mrs. Gavin Lowrey
Ms. Kristina Y. Lugo[†]
Mrs. Pamela A. Lunsmann and
Ms. Kelly Englum
Ms. Sara Lyons
Mr. Allan Maca

Ms. Judith L. Macior
Mr. and Mrs. Craig A. Mackrides
Mr. and Mrs. Duncan A.
MacLean
Mr. and Mrs. Steve Magenta
Mr. and Mrs. Greg P. Malnick
Alexandra Margo Malos
Mr. and Mrs. Ira Marcus
Mr. Jeffrey Margolis

Mr. and Mrs. John Martini
Mr. Wallace Massie
Mr. John R. Masters and
Ms. Carmella Cottonaro
Mrs. Donald W. Mather
Mr. and Mrs. James R. Mather
Mr. and Mrs. Verghese Mathew
Mr. Wesley D. Matthews and
Mrs. Viviana Matthews



In memory of Stanton R. Cook

The Field Museum mourns the passing of Stanton R. Cook, a distinguished member of the Board of Trustees since 1973. Mr. Cook was a remarkable leader serving on the Executive Committee, the Program Planning and Evaluation Committee, and the Facilities Planning Committee. He and his late wife Barbara supported the Field for more than 40 years and were charter members of the Founders' Council. Mr. Cook was a legend in the news publishing and television business, and was the former CEO of the Tribune Company.

Mrs. Cynthia Mark-Hummel and
Mr. John Hummel
Mr. and Mrs. David Markovitz
Mr. Paul Marquez and
Ms. Cindy Rangel
Mr. and Mrs. Anthony Marten

Dr. Julie L. Mattson and
Dr. Richard A. Mattson
Mr. and Mrs. George A.
Matwyslyn
Ms. Joan M. Mazurek
Mr. and Mrs. Russell McConnell

Mr. Stuart A. McCrary and Ms. Nancy L. Davis	Mrs. Carole Morey and Mr. Stephen Dudek	Mr. and Mrs. Richard H. Nicolaidis, Jr.	Mr. and Mrs. Bruce Palmer
Mr. and Mrs. Michael McCullough, Jr.	Mr. William A. Morgan and Mrs. Gwen Herrin	Ms. Hilda Nieves and Mr. Barry Abrams	Mr. Philip Pappas and Dr. Ana Lucia Pappas
Mrs. Sherry L. McFall and Mr. Kenneth J. Porrello	Mr. and Mrs. David D. Morimoto	Carol M. Nigro	Ms. Phyllis Parish
Mr. and Mrs. G. Thomas McKane	Mr. and Mrs. Rick Morimoto	Ms. Alice Niziolek	Ms. Cheryl Parker
Ms. Amy McKeough and Maxwell McKeough	Ms. Sabrina R. Morton	Mr. Raymond L. Noftsger and Dr. Tina Forchetti	Mrs. Eleanor Parker
Pat McMahon and L.W. McMahon-Padolski	Russell S. and Sydney G. Mosburg Fund	Mr. and Mrs. Ryan Nord	Mr. William Parkhurst
Ms. Danielle McMillan	Mr. Robert Moyer and Ms. Anita Nagler	Mr. Kenneth R. Norgan	Mr. and Mrs. Robert D. Parks
Ms. Sandy D. McNabb and Ms. Elizabeth A. Godwin	Dr. Barbara Mudloff	Ms. Marietta Norvid	Mr. James Parolski and Ms. Eileen Moran
Ms. Lettie McSpadden	Mr. and Mrs. Kurt M. Mueller	Ms. June Novalich and Ms. Helene Novalich	Stanley Parzen and Lynne Raimondo
Mr. and Mrs. John S. Meany, Jr.	Mr. and Mrs. David Mui	Mr. and Mrs. Marcus J. Nunes	Mr. and Mrs. Anthony C. Passanante
Mr. and Mrs. Joseph Meciej	Ms. Maureen G. Mullally	Ms. Christine O'Brien	Mr. and Mrs. Donald W. Patterson
Mr. Richard J. Medina and Ms. Maria T. Galo	Mr. and Mrs. Michael Mullane	Mr. and Mrs. Timothy O'Brien	Jim and Chris Patterson
Mr. and Mrs. James Meehan	Mr. and Mrs. Raymond Munaretto	Mr. ^E and Mrs. John R. O'Connell	Mr. and Mrs. Tom Pawelek
Mr. and Mrs. John Meehl	Mr. and Mrs. Edward C. Murawski	Ms. Jennifer K. O'Connor	Dr. David J. Peace and Ms. Karen Ferrer
Ms. Judith M. Meek and Ms. Nancy Wardrope	Mr. and Mrs. Guy B. Murdock	Mr. and Mrs. Neil O'Connor	Mr. Frederic C. Pearson
Mr. John M. Meeks	Mrs. Marisa Murillo and Mrs. Mathilda Murillo	Ellen ^E and Michael P. O'Hanlon	Mrs. Shauna Peet
Mr. and Mrs. James R. Meindl	Mr. and Mrs. J. B. Murphy	Ms. Kathleen O'Regan	Mr. and Mrs. Ray J. Pensinger
Ms. Marilyn Menuey	Mrs. Janet Murphy	Mrs. Dorothy Jeanne Oakley	Mr. and Mrs. Mathias Perdekamp
Mr. and Mrs. Charles Merwin	Ms. Sheila Murphy and Ms. Brigid Wolff	Mr. and Mrs. Trond Odegaard	Ms. Abigail Perkins and Mr. Philip Perkins
Ms. Annemarie Mesich	Ms. Corlis D. Murray	Mr. and Mrs. Donald R. Oder	Mr. and Mrs. David Perry
Mr. Ken Metcalfe	Mr. Michael J. Murrin	Mr. and Mrs. Dele Ogunleye	Mr. Aaron Persaud and Ms. Rebecca Zhao
Mr. and Mrs. Robert Metzger	Mr. and Mrs. Chester Musson	Mr. and Mrs. Jeffrey Oleniacz	Ms. Antonina Peshkova
Mrs. Erin Meyer ^E	Mr. and Mrs. James W. Myers	Ms. Nancy Olive	Mr. Ira J. Peskind
Mr. Craig S. Michelsen	Mrs. Luvie Myers	Mr. and Mrs. Victor Olowu	Mr. James W. Peters
Dr. Charles R. Middleton and Dr. John S. Geary	Mr. and Mrs. Michael Myers	Miss Marie E. Olsofka	Mr. and Mrs. Mark Peters
Ms. Catherine Miller and Mr. Greg Gunderson	Mr. and Mrs. William Myers	Mr. Tod A. Olson and Ms. Julie Stauffer	Mr. and Mrs. Michael F. Petersen
Mr. Vernon A. Miller and Ms. Kathryn Tecza	Dr. and Mrs. Jonathon H. Nadler	Dr. Adam Olszewski	Mr. and Mrs. Daniel B. Peterson
Mr. James C. Mills and Ms. Lois S. Zoller	Mr. and Mrs. Ron Nahser	Ms. Gladys Orozco and Mr. Rodolfo Gonzalez	Mr. and Mrs. Mark Peterson
Mrs. Jo Anne Moeller	Mr. and Mrs. Chris Nard	Ms. Kathleen F. Orr and Dr. Edward S. Ogata	Mr. Verne Peterson and Ms. Julie Lipkin
Vanajakshi Mogulla and Vishnu Patlolla	Mr. Kenneth Nassau	Mr. and Mrs. Robert W. Orr	Mr. and Mrs. Thomas D. Philipsborn
Mr. and Mrs. Matthew B. Monesmith	Mr. James Naughton and Ms. Anita Andren	Dr. Charles and Madeline Osadjan	Mrs. Elizabeth B. Phillips
Mr. Jose Dennis A. Monteverde	Ms. Amy Neidlinger	Mr. and Mrs. Dennis V. Osimitz	Mrs. Marlene W. Phillips
Mr. and Mrs. Richard Moody	Mr. and Mrs. Charles J. Nelson	Ms. Erica D. Osterloo ^E	Susan I. Phillips ^E
Mr. Thomas H. Moog	Mr. and Mrs. Timothy E. Nelson	Ms. Barbara E. Otte and Mr. Bruce C. Shelley	Mr. and Mrs. James E. Piechowski
Mrs. Frank J. Mooney	Ms. Lisa Nemeroff	Mr. David Otto	Mr. and Mrs. Robert G. Pierce
Mr. and Mrs. David Moore	Network for Good	Ms. Rebecca Owen	Mrs. Anita Pindiur-Harris and Mr. Nicholas Harris
	Mr. and Mrs. Richard W. Newcomb	Mr. and Mrs. John E. Owens	Mr. and Mrs. Walter J. Plank
	Mrs. Susan E. Newton	Ms. Catherine Paddock and Mr. Jonathan Hagstrum	
	Mr. and Mrs. Gary R. Nickels	Mr. and Mrs. Raymond Paice	
	Ms. Karen Nickelson	Ms. Ada Palmer	

Mr. and Mrs. Joseph B. Plauche	Mr. and Mrs. Charles A. Remsberg	Gail L. Sadock	Mr. and Ms. Michael Silerzo
Mr. Peter W. Plumley and Ms. Anna M. Rappaport	Dr. Sigrida Renigers and Ms. Astra M. Patrick	Mr. D. P. Sager	Mr. and Mrs. David Silke
Mr. and Mrs. Joshua Poje	Mr. Al Renslow and Mrs. Karen Fontaine	Ms. Christina M. Sakowski	Ms. Ilene Simmons
Mr. and Mrs. Steve Pollack	Mr. and Mrs. Philip J. Reny	Mr. Antonio Sanchez and Mrs. Leila Yabiku	Mr. and Mrs. Michael Simpson
Mr. and Mrs. Jay Pollitt	Dr. Raiselle C. Resnick and Dr. Kenneth I. Resnick	Mr. and Mrs. Emil Sanchez	Mr. Junie L. Sinson
Mrs. Rachel Polster and Mr. Brad Hickey	Mr. and Mrs. Alejandro Reynoso	Mr. and Mrs. Stephen Sandler	Ms. Carol B. Skala
Ms. Dana L. Pond	Mrs. Junell Richert	Ms. Nancy Sans	Mr. Thomas E. Skilling III
Ms. Faye Porter	Dr. Justin Richland and Dr. Lindsey Richland	Mr. and Mrs. Milan Saric	Mr. Jacob Sklarsky and Ms. Mariann McKeever
Marcy Posner and Michael Singer	Mr. Neil W. Rickert	Mr. Peter F. Saunders and Ms. Patricia J. Larson	Ms. Margaret Skrmetti ^E and Mr. Jerel Bangayan
Mr. and Mrs. Richard A. Posner	Mrs. Cynthia E. Rickman-Williams and Mr. George P. Williams	Ms. Vera Scekcic and Mr. Robert C. Osborne	Mr. and Mrs. Mitchell Slotnick
Mr. and Ms. Matthew Postlewaite	Mrs. Patricia A. Riley	Mr. and Mrs. David M. Schiffman	Ms. Edith Small
Mr. William P. G. Potocek	Ms. Amy A. Ripepi and Mr. Garry J. Grasinski	Mr. Wilhelm Schlag and Mrs. Samantha Whitney	Mr. Austin W. Smit
Mrs. Beth Potocsnak	Mr. James Rivera and Mrs. Tamiko Casteel	Mr. David L. Schlotterback	Bernard Smith, M.D.
Dr. Charles A. Pounian	Dr. Wilfredo Rivera	Ms. Susan D. Schlough and Dr. Andrew D. Abbott	Mr. and Mrs. Charles F. Smith
Mr. and Mrs. Richard Price	Mr. and Mrs. David E. Robinson	Mr. Douglas M. Schmidt	Ms. Miriam A. Mobley Smith and Mr. Donald Brower
Mr. and Mrs. John Pujals	Ms. Chrissy Rodriguez	Mr. and Mrs. Arthur Schneider	Ms. Rebecca Gray Smith
Mrs. Doris J. Puntney	Ms. Jeanette Rodriguez ^E	Dr. John F. Schneider	Mr. and Mrs. Stephen Smith
Mrs. Chestine Puralewski	Mr. and Mrs. Luis Rodriguez	Mr. Michael J. Schneider	Dr. and Mrs. Steven Smith
Mr. James L. Puralewski and Ms. Ruth A. Francis	Mr. and Mrs. Paul E. Roge	Mrs. Elizabeth Schroeder	Toni Sandor Smith
Mr. and Mrs. John F. Pustola	Jill and Ron Rohde	Mr. and Mrs. Paul W. Schroeder	Mr. Elbert Sneed
Ms. Jennifer Putzier and Mr. Brian Power	Ms. Julie Ann Roin and Mr. Saul Levmore	Dr. and Mrs. Peter F. Schultz	Dr. John Song
Mr. and Mrs. John Radzinski	Mr. and Mrs. Robert Rolih	Mr. Craig R. Schuttenberg and Ms. Colleen M. O'Leary	Miss Michelle Sotak
Mr. and Mrs. Charles Raich	Mr. and Mrs. Benjamin Rooks	Mr. and Mrs. Marc Schwartz	Ms. Robyn Sotak
Helene and Norman X. Raidl	Mrs. Patricia Rooney	Mr. Carlos S. Schwarz and Mrs. Georgia Droulias-Schwarz	Ms. Lindsey Soukup
Mr. and Mrs. John R. Raitt	Ms. Tracy Rose-Love and Mr. James Love	Mr. and Mrs. Charles Schweizer	Mr. Donald Southworth and Ms. Marilyn Cantisano
Miss Dorothy V. Ramm	Mr. Jack H. Rosenberg and Ms. Anne L. Wieboldt	Ronald and Jane Schwuchow	Mr. Michael J. Spence
Dr. Ruth G. Ramsey and Dr. Michael M. Ramsey	Mr. and Mrs. Michael Rosenberg	Mr. and Mrs. Peter D. Scully	Mr. Norman F. Spielman
Mr. and Ms. George A. Ranney, Jr.	Mr. and Mrs. Jack Rosenfeld	Mr. Richard Seehuus	Mr. and Mrs. Donald E. Sporleder
Lynne Rauscher-Davoust	Mr. and Mrs. Bernard Rosenstein	Mr. Mason M. Seglin	Mr. Sean S. Sprague
Dr. Timothy W. Raykovich and Ms. Donna Vega	Mr. Warner A. Rosenthal	Mr. and Mrs. T. Dwaine Sell	Ms. Gloria Stachnik
Ms. Suzanne J. F. Reade and Mr. Bruce Foudree	Mr. Phillip D. Rowe	Mr. and Mrs. Chris L. Seth	Mr. David Standifer
Mr. and Mrs. Thomas Reece	Ms. Roberta H. Rubin	Mr. and Mrs. John A. Shaw	Mr. Steven Starr and Ms. Kathryn Tholin
Mr. and Mrs. Mark E. Reeves	Ms. Lynn M. Rubino	Mr. Francis L. Sheahan	Mr. and Mrs. Jay Steffen
Mr. Henry Reich	Mr. Aniz Ruda	Mr. Paul Sheehan and Ms. Andrea Ernest	Mr. and Mrs. Kurt J. Steib
Mr. and Mrs. Jeffrey R. Reid	Ms. Carol Ruda and Mr. Norm Hilgeudorf	Dr. Zheng Shen	Mr. and Mrs. Richard Steinke
Mr. Stephen Reid	Ms. Catherine Rudolph	Mr. James V. Shipp and Ms. Nancy Marie Casper	Mr. and Mrs. John A. Stepan
Mr. and Mrs. John B. Reilly	Mr. and Mrs. Gerard Russell	Mr. and Mrs. Tom Sholeen	Mr. and Mrs. Robert Stephens
Mr. and Mrs. Jeffrey Reis	Mr. James Ryan and Mrs. Julie Hextell	Mr. and Mrs. William Shorey	Mrs. Sandra P. Sterling
Dr. Mark S. Reiter and Dr. Kathleen A. Ward		Mr. and Mrs. Duward F. Shriver	Mr. and Mrs. Phillip L. Stern
		Mr. and Mrs. Douglas L. Shuman	Mrs. Doris F. Sternberg
		Mr. and Mrs. Alan H. Silberman	Mr. and Mrs. Donald M. Stewart
			Mr. and Mrs. Jason Stratton
			Ms. Patricia A. Stratton

Mr. James R. Streicker and Ms. Mary W. Stowell	Mr. and Mrs. Barton G. Tretheway	Mr. Ralph Wanger and Ms. Monique Clarine	Mr. Edmund J. Wolff
Mr. and Mrs. John J. Streit	Ms. Mary Trowbridge and Mr. William West	Ms. Therese L. Wareham	Mr. and Mrs. Jonathan Wols
Mr. and Mrs. Glen C. Suda	Ms. Marlo Troy	David Wargowski	Mr. and Mrs. Stephen Woo
Connie and Howard Sulkin	Mr. and Mrs. Christian E. Trummel, Jr.	Mr. and Mrs. Kurt L. Warning	Nancy and John Wood
Mr. Michael J. Sullivan	Ms. April Tufekcioglu	Ms. Laura S. Washington ^T and Mr. Michael W. Richmond	Mr. and Mrs. Terrence Woods
Mr. Richard Sullivan	Mr. and Mrs. Dominic P. Turchi	Mr. Ludwig Wasik and Ms. Caitlin Rawlins	Mr. and Mrs. Mark Woodworth
Mr. David Sundquist and Ms. Terri Schultz	Mrs. and Mr. Mary Beth Turek	Ms. Ann Wasoff	Mr. and Mrs. Zachary Worshill
Ms. Nancy W. Sutherland	Mr. Scott F. Turow and Ms. Adriane Glazier	Ms. Sophia A. Watson	Mr. and Mrs. Edward Yaghmour
Mr. and Mrs. Harold Sutton, Jr.	Mrs. Elizabeth K. Twede	Mr. and Mrs. David B. Waud	Ms. Nancy Ying
Mr. Wayne Svoboda	Mr. Robert C. Vallone	Mr. Stanley Wearden and Ms. Deborah Davis	Mr. and Mrs. Fred Young
Hobart K. and Janis F. Swan	Ms. Melody A. Van Wermeskerken	Mr. Leonard L. Weber	Mrs. Janice C. Young
Ms. Anne Elizabeth Swaney	Mr. John M. VanderLinden and Mr. John W. Butler	Mr. and Mrs. Andrew J. Weddig	Mr. Terrence A. Young
Mr. and Mrs. Edwin L. Swanson	Dr. and Mrs. Peter O. Vandervoort	Ms. Kathryn P. Weibel and Mr. Steve Freeman	Owen and Linda Youngman
Mr. Gerry Swanson	Mr. John D. VanPelt and Ms. Sharon M. Quintenz	Mr. and Mrs. James Weidner	Ms. Bai Yuen
Mr. and Mrs. David W. Swartz	Mrs. Christine E. Varela and Ms. Angela Varela	Richard and Karen Weiland	Diane and Lawrence Zalusky
Ms. Loretta B. Sweeney	Mr. and Mrs. Joseph Vargo	Mrs. Claire Weimann	Mr. Denis M. Zamirowski
Mr. and Mrs. Steven Sweetser	Mr. Eugene C. Varnado	Mr. and Mrs. Tom Weinberger	Clementine Zavelle and Brian Ibsen
Mr. Kenneth Swiatkowski and Ms. Valerie Schoen	Mr. Martin Vega and Ms. Carmen Cruz	Mr. and Mrs. Jerome S. Weiskopf	Mr. and Mrs. Jay H. Zimbler
John S. Swift Family Charitable Trust	Dr. and Mrs. Jeffery S. Vender	Mr. and Mrs. Steven A. Weiss	Mr. and Mrs. John A. Zimnie
Mr. J. Roger Swihart	Mr. and Mrs. Leonard M. VerVers	Mr. and Mrs. David D. Wesselink	Mr. and Mrs. Earl Zingraf
Ms. and Mr. Megan Synenki	Mr. and Mrs. John F. Vicha	Ms. Linda Westergren	Mr. and Mrs. John Zuffante
Mr. and Mrs. Robert J. Syrup	Mr. and Mrs. Randolph M. Videkovich	Ms. Connie Wethington	Mr. Dan Zukosi and Ms. Dorothy M. Zukoski
Dr. and Mrs. Jan P. Szidon	Mr. and Mrs. Paul Vogel	Mrs. Madelin M. Wexler	Mrs. Janice Zulkey
Ms. Gayle Taylor	Mr. Thomas W. Vogelsang and Ms. Kathleen M. Moran	Mr. and Mrs. Howard Whatmore, Jr.	
Ms. Kelly Taylor and Mr. Josh Tavernier	Mrs. Donna L. Wadycki	Ms. Mary White	
Mr. Steven F. Tempel and Ms. Deborah Zekich	Dr. and Mrs. Albert F. Wagner	Mr. and Mrs. Mark Wieclaw	
Mr. Brigham R. Temple	Mrs. Nancy F. Waichler	Mr. Lawrence G. Wilcox	
Mr. Nicholas Terrell	Ms. Belle Waldfogel and Ms. Georgean Goldenberg	Mr. and Mrs. Mark Wilcox	
Mr. and Mrs. Richard J. Thennes	Ms. Rosa E. Walke	Ms. Crystina Williams and Ms. Amy Heaney	
Mr. Robert L. Thompson	Mr. and Mrs. Alan Walker	Dr. and Mrs. David B. Williams	
Mr. and Mrs. Gregory A. Tieder	Ms. Diane Walker	Ms. Elaine Williams and Ms. Nicole Roberts	
Ms. Wendi Tillung	Ms. Katherine Walker	Mrs. Lynda Williams, PhD and Mr. Norman J. Williams	
Ms. Beverly Timm	Mr. and Mrs. Herschel D. Wallace III	Ms. Nancy A. Williams	
Dr. and Mrs. James Timmons	Marge Walls and Cassandra Sawyers	Mr. and Mrs. Donald Wilson	
Ms. Diane M. Tkach and Mr. James Freundt		Mrs. Robert H. Wilson	
Ms. Virginia Tolk		Mr. and Mrs. Timothy R. Wilson	
Mr. and Mrs. Wm. Ronald Tomecko		Mr. and Mrs. James R. Wimmer	
Shelley Torres and Bill Aldeen		Mr. and Mrs. James R. Wise	
Mr. and Mrs. Andrew Trees		Dorothy H. Wolff and Eric S. Wolff	
Dana Shepard Treister and Dr. Michael Roy Treister			

If you feel an error has been made in presenting this donor honor roll, please contact the Office of Institutional Advancement at annualreport@fieldmuseum.org.

Matching Gift Companies

The following companies generously matched gifts of their employees, retirees, or directors in supporting The Field Museum in 2015.

Anonymous	John D. and Catherine T. MacArthur Foundation
AbbVie	MetLife
ADP Foundation	Microsoft Corporation
Aetna	Nokia
Aon Corporation	Northern Trust
Apache Corporation	Peoples Gas
ArcelorMittal	Polk Bros. Foundation
AT&T Foundation	Salesforce.com
Bank of America	U.S. Bank
The Boeing Company	Western Union Foundation
BP	
Caterpillar Foundation	
Charles Schwab & Co, Inc.	
Ernst & Young LLP	
Expedia, Inc.	
The Field Foundation of Illinois, Inc.	
The FM Global Foundation	
The Gap, Inc.	
GE Foundation	
Google Inc.	
W.W. Grainger, Inc	
Honeywell International	
IBM	
ITW	
Johnson Controls, Inc.	
JPMorgan Chase	

The Edward E. Ayer Society

The Edward E. Ayer Society is the Museum's planned giving program. The Field Museum recognizes individuals who remember The Field Museum through bequests, trusts, and other planned or life income gifts.

Anonymous (22)	Mr. ^T and Mrs. Frank W. Considine
Barbara and Steven Adelman	Mr. Mark Crane
Marilynn Alsdorf	Ms. Rebecca Davidson
Mary Jane Arnam	Ms. Janet W. Diederichs
Mr. Harry Axelrod ^D	Gary and Candace Drimmer
Donald and Betts Baepler Endowment for Ornithological Study	La and Philip Engel
Mr. and Mrs. James H. Banach	Mr. Richard F. Eveleth
Mr. and Mrs. Robert D. Becker	Mr. and Mrs. Fabio Fabbri
Dr. Helen R. Beiser	Carl B. Fausey
Robert and Ruth Berns	Mary and Bruce Feay
Willard L. ^T and Susan K. Boyd	Dr. and Mrs. Curtis B. Frank
Mr. Richard T. Brannegan	Wilbur ^T and Linda Gantz
Mr. and Mrs. Frederick W. Brooke III	Mr. and Mrs. William E. Gardner
Mrs. George R. Brumlik	Mr. Lyle Gillman
Leo R. Buckert	Mrs. Warren L. Gjorup
Judith A. Caloud	Robert ^T and Beth Gordon
Rita and John ^T Canning	Dr. Norman C. Greenberg and Dr. Gilda M. Greenberg
Mrs. Robert Adams Carr	Timothy and Joyce Greening
Mr. Henry T. Chandler ^D	Mr. ^T and Mrs. Lewis S. Gruber
Mr. ^T and Mrs. Worley H. Clark, Jr.	Ms. Tonja Rizai Hall
Mr. and Mrs. Stephen F. Condren	Ms. Jeanne M. Hansen
	Drs. Malcolm H. and Adele Hast
	Mrs. Betty S. Hess
	David D. Hiller ^T
	John and Marjorie Hines
	Mrs. Harold H. Hines, Jr.
	Peggy L. Hoberg
	Anita and James Hornbrook
	Dr. and Mrs. James C. Hunt
	Mr. Edward C. Jerkey

Levins invest in the future

The Field Museum is grateful to Ambassador Fay Hartog-Levin (Ret.) and Daniel Levin for announcing a major endowment gift. The Levins stated, "We consider The Field Museum to be a most important educational, research, and cultural institution, enhancing Chicago's reputation as a global city. We are proud to have committed \$2 million to the Field's endowment through current and future gifts to assure its ability to maintain a tradition of excellence." Mr. Levin is a long-term supporter of the Field and in 2003 the Museum recognized his involvement with the naming of Levin Hall, a premier exhibition space on the East side of Stanley Field Hall. In her storied career of public service, former Ambassador Fay Hartog-Levin was once Vice President for External Affairs at The Field Museum.



Ms. and Mr. Stacy L. Johnson
 Mr. and Mrs.^T Dennis J. Keller
 Mr. and Mrs. Jerry M. Kelly
 Fay and Daniel Levin
 Robert E. Lewis, PhD
 Mr. Robert B.^T and
 Mrs. Gail J. Loveman
 Mr. and Mrs. Bernard A.
 Mack, Jr.
 Ann C. Mallow
 Mr. Robert C. Marks
 Ms. Nancy A. McDaniel
 Dr. William B. McDonald and
 Ptah Sekhmat Osiris
 Erma S. Medgyesy
 Robert and Lois Moeller
 Sandra L. Mueller
 Drs. James and Sandra
 Napolitan
 Mr. John P. Nielsen
 Ms. Karen A. Nordquist
 Irma Parker
 Joseph and Jo Ann Paszczyk
 Ms. Marie E. Peruscini and
 Mr. Edward C. Bapple
 Mr.^T and Mrs. Richard J. Pigott
 Mrs. John W. Pocock
 Julia Potter
 Mr. and Mrs. Mane Pritza
 Mrs. Alfred Lunt Putnam
 Dr. Dominick S. Renga
 Mr. Alan Resetar^E and
 Mrs. Donna Resetar
 Mr. Richard F. Reynolds
 Mrs. Sheila T. Reynolds
 Ms. Anita J. Rogers
 Mr. and Mrs. Benjamin Rooks
 Mr. David L. Schlotterback
 Mr. Douglas M. Schmidt
 Mr. Franklin R. Schmidt
 Patricia O. Schnadig
 Ms. Thelma L. Schwartz
 Mr. and Mrs. G. Curtiss Shaffer
 Bob and Charlene Shaw
 David Shayne
 Louise M. Sherman
 Rose L. Shure^P
 Miss Joanne Silver

Adele S. Simmons^T
 Rebecca Gray Smith
 Ms. Suzette Sodini
 Mrs. Gabriela H. Sparacio
 Duane E. and Christine M.
 Stout
 Ms. Judith B. Sugarman
 Datin Tan Fui Lian and
 Datuk Dr. Robert F. Inger
 Mr. Gerald M. Torrence
 Rose and Robert Wagner
 David Wargowski
 Nestor R. Weigand, Jr.
 Dianne M. Weinand
 Barbara H. West
 Ms. Claudia L. Winkler
 Mr. Lawrence J. and
 Mrs. Margaret V. Witry
 Mr. James G. Young
 Mr. and Mrs. William B.
 Zigterman
 Ms. Christine C. Zogus

Estates and Bequests

The Field Museum recognizes
 the following people for their
 bequests, legacies, and
 estate gifts.

Mary Alison Ebert
 Shirley M. Evans
 Frank B. Foster
 Evelyn Frank
 Ilse Friend
 Thomas Hofherr
 Leslie Hubricht
 Charles W. Lake, Jr.
 Bertha Lebus Charitable Trust
 Betty D. Prout
 William Rom
 Marian Shaw
 Marion Stoerker
 Jane L. Strasburg
 Jane B. and Chester D. Tripp
 Mary A. Triska
 Donald W. and
 Dorothy B. White
 Virginia Whittaker

In-Kind Gifts

3 Floyds
 Acanto
 The Betty
 Blackfinn
 Blue Man Group and
 Briar Theatre
 Chicago Blackhawks
 Chicago Cubs
 Chicago Distilling Company
 Chicago Shakespeare Theater
 Chuck Meyers
 Cream Winery
 Cubby Bear
 Desthil
 Diageo
 Drinker, Biddle & Reath LLP
 Esri Software
 Flagship
 Hubbard Inn
 Beth A. Humbert-Schmidt^T
 Hyatt Centric
 Jet Blue
 Mr. and Mrs. Frederick A.
 Krehbiel
 Kuma's Too
 Lagunitas
 Mastro's
 Mercadito
 mfk. Restaurant
 The Morton Arboretum
 Mr. Chau Tu Nguyen
 Dr. and Mrs. Tu Mahn Nguyen
 Pinstripes
 Racine Plumbing
 Redhead Piano Bar
 Revolution Brewery
 Sage Products
 John G. Shedd Aquarium
 SoulCycle
 Upton's Naturals
 Viceroy Hotel



For a list of in-kind
 contributions to the
 collections, please visit the
 digital edition of this report
 at [fieldmuseum.org/about/
 annual-reports](http://fieldmuseum.org/about/annual-reports).

Women's Board Gala honors Tang Family

The Women's Board celebrated the opening of the *Cyrus Tang Hall of China* with The Wonders of China Gala to honor the Tang Family. The event received more than \$2 million in support and welcomed 570 guests. Thanks to Gala Chair Donna Greenberg and the Gala Host Committee for their leadership, and to The Sun-Times Foundation and Chicago Community Trust for their generous matching support.

RIGHT—President Lariviere, Jan Lariviere, Women's Board President Kathleen Klaeser, Dennis Klaeser, Gala Chair Donna Greenberg, and Trustee Jack Greenberg.



Volunteer Leadership

THE WOMEN'S BOARD

The Women's Board promotes The Field Museum's scientific programs, exhibitions, and educational outreach. Members facilitate philanthropic activities to provide essential unrestricted and restricted support.

Kathleen Klaeser^T
President

Elizabeth Ahearne
Vice President

Frances Beatty
Hospitality

Judith S. Block^T
50th Anniversary

Susanna Ross Block
Field Dreams

Virginia Bobins
Hospitality

Peggy Bodine
Field Trips

Sandra Deromedi
Annual Appeal

Elizabeth Glass
Vice President

Karen Z. Gray
Women in Science Luncheon

Donna L. Greenberg
Annual Appeal Gala

Jean Baldwin-Herbert
Board Luncheons

Martha Higgins
Women in Science Luncheon

Elizabeth Kauffman
Outreach Initiative

Anne Kavanagh
Programs

Kelli S. Klauber
Membership

Constance Magnuson
Secretary

Susan Clark McBride
50th Anniversary

Leslie Gantz McLamore
Outreach Initiative

Elisabeth C. Meeker
Field Trips

Christine Ott
Development Initiative

Cynthia Scalzo
Field Dreams

Patricia Schnadig
Women in Science Fellowship and Internships

Susan Sebulsky
Outreach Initiative

Laura Silva
Membership

Margaret Snorf
Member at Large

Bonnie E. Stearns
Nominating

Leslie Zentner
Treasurer

PRESIDENT'S LEADERSHIP COUNCIL

The President's Leadership Council is an auxiliary group of established professionals with an interest in civic and philanthropic activity. Members support Museum initiatives through expertise-based volunteer work and utilize their personal and professional networks to raise the profile of the institution.

Ryan S. Ruskin^T
Chair

Michael D. Arnold

Paul S. Chatalas

Jill Hutchison

Amanda A. Sonneborn

Mr. Brian G. Fahrenbach

Ms. Jennifer Guskey

Melissa Genova Hill

Ms. Casey McCarthy

Mr. Aniz Ruda

Jeffrey Skender

Miss Michelle Sotak

Ms. Lindsey Soukup

Michael Steel

Mr. Ryan VanHolsbeke

COUNCIL ON AFRICA

The Council on Africa brings together The Field Museum's supporters and scientists who share an interest in the African continent and its people. Council members' contributions help to fund training for scientists and research endeavors in Africa.

Anonymous

Mary and Rich Chamberlin

Ms. Marian F. Cook

Pamela Conant

Mary and Bruce Feay

Dr. James and Martha Foght

Ms. Judy Johanson

Ms. Kathleen Jordan

Mr. and Mrs.^T Dennis J. Keller

Mr. and Mrs. Bruce H. Lauer

Deborah B. Manoogian

Ms. Nancy A. McDaniel

Elisabeth C. Meeker

Adele S. Simmons^T and John L. Simmons

Mr.^T and Mrs. David M. Tolmie

FIELD ASSOCIATES

The Field Associates is an auxiliary group created by, and for, young professionals. The Field Associates engage the next generation of civic leaders at the Museum through networking, programming, fundraising, leadership, and service.

Beth A. Humbert-Schmidt^T
President, 2016

Helen Odom
President, 2013–2015

Ms. Andrea Alexander

Ms. Clarisa Bonilla

Mr. Paul Butler Diaz, Jr.

Andrew Critchell

Ms. Samantha Dietz

ANTHROPOLOGY ALLIANCE

The Anthropology Alliance promotes interest in and support of The Field Museum's anthropological research and collections.

Bob Shaw

Chair

Ms. Joan Goldstein

Joyce Greening

Susan Mikalauskis

Kathleen Rummel

James Stola

Sheila Whalen

Carl Wolf

Field Museum Volunteers

Field Museum volunteers contribute their time and skills to advance the Museum's mission. Behind-the-scenes and in public exhibitions, volunteers support Museum staff and visitors alike.

500+ HOURS

Richard Bisbing

Robert Boswell

Irene Broede

Christopher Brown

John DeWerd

Philip Dittmann

Michael Ferrer

Christine Frazer

Laura Fruhauff

Peter Gayford

Bernice Jacobs

Janis Lariviere

Peter Lowther

Michael Marozas

Christopher McGarrity

Sandra Mueller

Robert North

Robyn Pearson

Nina Sandlin

William Sherry

Kurt Zahnle

Elaine Zeiger

Steven Zitowsky

Gabriel Flores

Elizabeth Fraccaro

William Franz

Glenn Gabanski

Gerard Gagne

Arlene Ghiron

Luke Ginger

Renee Goddijn

Timothy Greening

Ann Grelyak

Rachel Grill

Charles Guptill

Richard Guzik

Gayle Guzik

Mary Harland

Mattie Harris

Beverly Harris

Joyce Hecht

Aaron Heuer

John Hill

Jeff Hoswell

Thomas Iverson

Roland Jabotte

Judy Johanson

Shiteng Kang

James Kase

Nancy Kaufmann

Charles Kelly

Julia Kennedy

Mary Ann Khan

Anna Kosters

Sarah Kurtis

Ruth Larson

David Larson

Katie Lattal

Gabrielle Lehmann

Joanne Levy

Loretta Long

Joann Martinec

Lettie McSpadden

Daniel Melone

Aaron Mercer

Jacob Meyer

Beverly Meyer

Olivia Minella

John Morris

200-499 HOURS

Eric Ahlgren

Robert Andresen

John Balaban

Linda Barba

Mery Elyn Baron-Pocius

Sandra Bauer

Lauren Bawiec

Janice Bell Kaye

Gloria Berkwits

Arlene Bezark

Richard Bloomfield

Theresa Boswell

Joan Bruchman

Samantha Brunner

Melissa Burnett

Delano Busczynski

Joseph Cablk

Robert Cantu

Drew Carhart

Robert Case

Kelsey Choo

Harpreet Datt

Theodore Davies

Robin Delapena

Mark DeSantis

Italo Ravell Dias Ferreira

Gary Drimmer

John Dunn

Thomas Durica

Annamarie Fadorsen



Women in Science Luncheon receives unprecedented support

The Women's Board welcomed Diana M. Rauner, PhD, President of the Ounce of Prevention Fund and First Lady of the State of Illinois to keynote the annual Women in Science Luncheon on May 12. The record-setting event raised \$235,000 to support a graduate fellow and ten summer interns in the 2016 Women in Science Internship Program. Special thanks to lead sponsors Abbott, Archer Daniels Midland, Exelon, ITW, and Connie and Dennis Keller, and benefactors John and Jackie Bucksbaum, DeVry Education Group, J.P. Morgan, and Nicor Gas.

ABOVE—President Lariviere, Event Co-Chair Marty Higgins, Keynote Speaker Diana M. Rauner, Women's Board President Kathleen Klaeser, and Event Co-Chair Karen Gray at the Women in Science Luncheon.

Timothy Nelson	Grace Takata
Betty Newbart	Thomas Tervanis
Karen Nordquist	Andrea Thompson
Andrea Odegaard	Darren Vilmin
Marie Orendach	Phyllis Walden
Stephen Parshall	David Walker
Angelina Patti	Dustin Weddle
Lindsey Petitt	Kuro Wilks
James Piekarczyk	Bob Wilson
David Prus	William Zandrew
Anita Punkay	Howard Zar
Sara Rastegar	
Loran Recchia	
Susan Reinke	
Amanda Robinson	
Judith Rom	
Alpha Sadcopen	
John Schmadeke	
Annette Schmit	
Jeffrey Schroder	
Monica Sentoff	
Stephen Sentoff	
Karen Sharpe	
Terri Sinnott	
Rebecca Smith	
Brian Smith	
Beth Spencer	
Robert Spieler	
Marc Stackler	
James Stola	
Donna Stone	
Lisa Stringer	
Ali Sultan	

Commemorative Gifts

The following donors made gifts to The Field Museum in the name of a friend or loved one.

IN MEMORY

Harvey Berman

Andrea and Larry Crain

Dr. Andrew Hill

Mr. Nick Blegen

Dr. Harold Honor

Ms. Pat Madej-Zenin

Ms. Paula Schneiderman

Tiffany Ann Makaus

Mr. Brent Makaus

Frank J. Mooney

Mrs. Frank J. Mooney

Barbara Roob

Mrs. Robert C. Hyndman—
Environmental and
Conservation Programs

Richard Rosenberg

Ms. Nancy L. Zuraw

William T. Stanley, PhD^E

Anonymous (8)

Ms. Tia Amdurer

Mr. Kenneth D. Angielczyk^E

and Ms. Audrey Aronowsky

Mr. and Mrs. John Ballard

Ms. Lauren E. Bawiec

Ms. Susan M. Benton^T

Ms. Clarisa Bonilla

Ms. Maureen Coleman and

Mr. Jake Waldbauer

Ms. Carol Collins

Professor^T and Lady Peter R.
Crane

Ms. Candan Crie

Mrs. Louise H. Curry

Mr. and Mrs. Mark D.

Dawson

Mr.^T and Mrs. Roger K.

Deromedi

Basil and Marcy deTineo

Ms. Diana L. Duncan^E

Ms. Jean Eagleton

Mary and Bruce Feay

Dr. Stasia J. Frank-Powers

and Dr. Richard J. Powers

Christine^E and Gary Giannoni

Ms. Beth Grimaldi

Mrs. Elzelien Hartog

Dr. Malcolm H. Hast

Sheryl Heidenreich

Melissa Hilton and

Jonathan Perman

Kristen and Josh Jacobs

Ms. Judy Johanson

Charles L. Katzenmeyer^E

Ms. Meg Katzman

Ms. Mary Jane Keitel^E and

Mr. Mark J. Bouman^E

Mr. Jamie Kelly^E

Stephanie Kimmel^E and

Michael Conroy

Mr. and Mrs. Jeff Koziol

Dr.^{TE} and Mrs. Richard W.

Lariviere

Fay and Daniel Levin

Ms. Patricia Lord

Mr. and Mrs. Jim MacGinnitie

Mr. and Mrs. Patrick C.

MacLeod

Mr. and Mrs. Timothy J.

Malloy

Mr.^T and Mrs. John W.

McCarter, Jr.

The Jill and Paul Meister

Charitable Fund

Mr. Thomas McIntyre

Patricia B. Miller

Mr. Juan Miranda

Mrs. Sandra L. Mueller

Susan Neill^E

Ms. Lora Nickels^E and

Mr. Thomas Tague

Ms. Marietta Norvid

Mr. Carter O'Brien^E

Chicago's young professionals make EVOLVE a premier 2015 event

[The Field Associates'](#) annual fundraising event was a 2015 highlight for young professionals in the city. More than 250 guests visited the iconic Stanley Field Hall for dancing, music, and of course, Field Museum science and exhibitions. EVOLVE received more than \$40,000 in support.

RIGHT—Field Associate President Beth Humbert-Schmidt, Jennifer Guskey, Ryan VanHolsbeke, Lindsey Soukup, and Andrea Alexander.



Dr. Charles and Madeline Osadjan
 Ms. Erica D. Osterloo^F
 Mr. and Mrs. Jim Patton
 Mr. Tom E. Pawlik
 Mrs. Richard J. Peterson
 Allan and Karen Rechtschaffen
 Mr. Chris Reynolds
 Ms. Jill Reynolds
 Ms. Peggy Reynolds
 Ms. Regina Reynolds
 Mrs. Sheila T. Reynolds
 Siobhan Reynolds
 Ms. Alicia D. Rollo

Carolyn H. Weinstein
 Mr. and Mrs. Robert Golden
 Ms. Janice Goldstein
 Mrs. Cathy Horowitz
 Ms. Jenny Kline
 Mr. and Mrs. M. J. Padorr
 Mr. and Mrs. Stephen Reiches
 Ms. Martha Roth
 Mr. and Mrs. Michael D. Silverman

Delbert E. Yarnell
 Ms. Leslie Hirshfield

Jean Herbert
 Ms. Colleen A. McElligott

Constance T. Keller^T
 Mr. and Mrs. Edward J. Mooney

Jeffrey B. Keller^T
 Ms. Katherine Walker

Richard W. Lariviere, PhD^{TE}
 Human Resources
 Management Association
 of Chicago

Frances and Elliott^P Lehman
 Mr. and Mrs. Robert E. Berns

Gifted Collections

Through generous gifts of objects and specimens, The Field Museum's collections have grown to become an indispensable scientific resource for scholars around the world. The Museum acknowledges the following donors who made gifts in 2015 to enhance the institution's collections.

ANTHROPOLOGICAL COLLECTIONS

D. E. Arnold



Endowed Building Legacy Fund launched

Anticipating the centennial of The Field Museum's monumental lakefront building (in 2021), an anonymous donor has committed \$5 million to launch a Building Legacy Fund. The endowment will help ensure the facility remains functional and beautiful, while allowing for future improvements. This gift was made in honor Jim W. Croft, PhD, who served the institution for more than 30 years as Executive Vice President and Chief Financial Officer. The Field Museum is extremely grateful for a new commitment which celebrates and supports its iconic home.

Mrs. Elizabeth D. Rothermel
 Mr. Bruce Sagan
 Pam and Tom Sheffield/
 JS Charitable Trust
 Mr. and Mrs. Douglas L. Shuman
 Mr. William F. Simpson^F
 Dr. Michelle Singleton
 Dr. and Mrs. Steven Smith
 Mr. and Mrs. Adlai E. Stevenson III
 Ms. Patricia A. Stratton
 Kizra Sullivan
 Datin Tan Fui Lian and
 Datuk Dr. Robert F. Inger
 Mr. and Mrs. Peter Thomas
 Ms. Shelia Trainor
 Mr. Ryan B. Whitacre and
 Ms. Katherine T. Donaldson
 Ms. Elizabeth Williams
 Ms. Laura A. Woods^E
 Michael Wright
 Ms. Flora Zagorites
 Geena and Dennis Zaslavsky

Jane L. Strausberg

Ms. Amy Cohen
 Ms. Carol Hill
 Dr. and Mrs. Joshua Kahn

IN HONOR

Ron Cummings
 Mr. and Mrs. Steve Cummings

Paul Durietz
 Woodland Community
 Consolidated School
 District 50

Joshua I. Engel
 Mr. and Ms. Charles S. Marn

Mr.^T and Mrs. James S. Franks'
50th Wedding Anniversary
 Mr. and Mrs. Charles E. Frank

**Laura De Ferrari and
 Marshall B. Front^T**
 Larry and Maxine Snider

Wilbur H. Gantz III^T
 Ms. Margaret Gantz

Donna Greenberg
 Ms. Dolores Kohl Kaplan

Jane and Jon Lind
 Ms. Susan F. Thompson

Mrs. Withrow W. Meeker
 Mrs. Margaret M. Pendry

Alan Resetar^E
 Anonymous

Patricia Schnadig
 Mrs. Adrian R. Foster
 Mr. and Mrs. Eric R. Schnadig

Karen Sholeen
 Ms. Melanie Farnon
 Ms. Denise M. Labedz and
 Mr. Jason Labedz
 Mr. Keith S. Labedz

Bukidnon State University
 Juanita Salvador Burris
 Theodore N. Foss
 Seth Goldstein
 Margaret Lichter
 Helen Samuels
 Richard C. Schneider
 William Stolz
 Cynthia Weill

BOTANICAL COLLECTIONS

Duke University
 Eszterházy Károly College
 Harvard University
 Hiroshima University
 Hungarian Academy of Sciences
 Instituto de Ecología
 Korean Lichen & Allied
 Bioresource Center
 Michael D. Lee
 Missouri Botanical Garden

Missouri Western State College	LIBRARY	Kate Cronin	Carla Jaffe
Museum of New Zealand Te Papa Tongarewa	William S. Goldman	Cole Czajkowski	Thomas Janas
National Museums of Kenya	Dr. John Terrell ^E	L. Davidson	Nikki Jarecki
National Tropical Botanical Garden	Edward J. Valauskas	Rachel Decorvo	Kristin Jensen
New York Botanical Garden	ZOOLOGICAL COLLECTIONS	Dave Descoteaux	David Johnson
Oregon State University	Amphibians and Reptiles	Charles DeLavoie	Jessica Johnson
Ramkhamhaeng University	Danilo Balete	Kathy DeSantis	T. Johnson
Royal Botanic Garden Edinburgh, Scotland	Alicia Beattie	Mark DeSantis	Lyn Johnston
Royal Botanic Gardens, Melbourne, Australia	Dr. Lawrence R. Heaney ^E	Marielle Diel	Mark Johnston ^E
San Diego Natural History Museum	Sarabeth Klueh-Mundy	Phil Dittman	C. Kadlea
Universidade Federal do Ceará	Dr. Larry Reed	Jennifer Dombeck	N. Kadlea
Universidade Federal do Rio Grande do Sul	Alan Resetar ^E	Ann Domek	Chris Kadow-Dougherty
University of Connecticut	Bryan Stuart	Kelly Dougherty	John Kaiser
University of Otago	Aquila Wilks	Pamela Dowd	Neil Kanemoto
	Willowbrook Wildlife Center	Sean Dwyer	John Kelly
		Glenna Eaves	Stephen Klink
	Birds	Scott Ellis	Louis Knapp
	Tony Abraham	Marty Farrington	David Koeller
	Daniela Amendola	Sandy Fejt	Krista Koeller
	Robert Andrini	Miclele Fiala	James Koepl
	Steve Bailey	Owen Flagel	Alicia Kozikowske
	Dr. John M. Bates ^E	Flint Creek Wildlife Rescue	Marcy Krause
	Bay Beach Wildlife Sanctuary	Fox Valley Wildlife Center	Larry Krutulis
	Julie Biedess	Bill Franz	Scott Kuipers
	Stephanie Bielke	Glenn Gabanski	Ruth Kurczewski
	Nancy Bigelow	G. Ginsberg	Sarah Kurtis
	Tina Bonofiglio	Thomas Gnoske ^E	Katy Laguzza
	Mary Boylan	A. Goldmintz	Clark Landwehr
	Nancy Bradt	Ingrid Gould	R. Lang
	Anna Braum	M. Grant	LuAnn LaSusa
	Joshua Breems	Ed Graskamp	Karsten Lawson
	Joan Bruchman	Cindy Gray	Al Legzdins
	Liz Bullock	Lori Grove	Hans Lim
	Peter Buol	Ethan Gyllenhaal	Peter Lowther
	Bonnie Bush	Suzanne Hackbarth	Mary Loye
	Walter Carrington	Sheila Harris	Peggy Macnamara ^E
	Kevin Carroll	Chris Hauser	S. Maggi
	John Cawood	Ben Heins	P. Maggione
	Suzanne Checchia	Laura Helms	Crystal Maier ^E
	Chicago Bird Collision Monitors	Mary Hennen ^E	Benjamin Marks ^E
	Shivani Choudhary	Maria Hlohowskyj	Carolyn Marsh
	Diane Cohen	Debbie Hohmann	Jennifer Marshall
	Steve Constantelos	Scott Holingue	Zack Martin
	Ezekiel Cordeiro	Joanna Hosteny	June Matayoshi
	Ruta Cosimo	Janice Humphrey	Dave Matusik
		Curtis Jackson	Laura Mauroka

Paul Mayer^E
 Lynne Mecum
 Laura Mendoza
 Julia Meredith
 Chicago Midway
 International Airport
 Paul Miessler
 Marion Miller
 Minnesota Department of
 Natural Resources
 Ingrid Moreno
 Kim Moseid
 Ashley Nelson
 Sunny Nelson
 Ellia Oesterle
 Jeanette Okulinski
 Elizabeth O'Hara
 O'Hare International Airport
 Holly O'Mara
 Katie O'Neil
 Oded Ovadia
 Rob Paral
 Sharon Parmet
 Dorothy Pesch
 Therese Peskowits
 Caitlin Peters
 Renee Petersen
 John Phelps^E
 Scott Plant
 Marina Post
 Annette Prince
 Robert Prorise
 Ben Provencher
 Melinda Pruett-Jones
 Vasek Quesada
 Michael Quigley
 Jennifer Raber
 Teri Radke
 George Reineke
 Rawlins Riles
 Kathleen Ritterbush
 Brad Roback
 Geri Rode
 Charlotte Ross
 Richard Runbott
 Bob Russ
 Lauren Russ

Jill Russell
 Kathleen Sadleir
 Roxanne Sadleir
 Vivienne Sadleir
 Jaqulen Samuels
 Jessica Sandy
 Save Our American Raptors
 Mike Scelfo
 May Schlotzhauer
 Kelly Schmidt
 Susan Schmidt
 Nikki Segawa
 Barbara Shaw
 Kathleen Slomski
 Nicholas Sly
 Alexis Smith
 Jeff Smith
 Natalie Smith
 Allison Spangenberg
 Kym Spiller
 David Stagman
 Bob Stanley
 James Steffen
 Kay Stepkin
 Jill Stites
 Celia Strauss
 Ian Surroz
 Kevin Swagel^E
 Sandy Swanson
 Flora Swearingen
 Betty Sweetland
 Barb Sydow
 Sarah Tag
 Linda Tartof
 Amy Tavalino
 James Tibensky
 Treasure Coast Wildlife Center
 Michael Trinchitella
 Graham Troyer-Joy^E
 Suzanne Turner
 Chris Van Wassenhove
 Victoria Velenski
 Denise Verret
 Suzanne Verret
 Anita Victorn
 Sarah Von Fremd

Tatzyana Wachter^E
 Ellen Walker
 Sean Ware
 Chris Warneke
 Chris Whelan
 Robert Wild
 Mary Wiesen
 Lindsey Wilkes
 Aquila Wilks
 David Willard
 Carrie Willingham
 Willowbrook Wildlife Center
 Margaret Wilson
 Ashley Woltman
 Sandy Woltman
 Ann Woodward
 Ailani Wong
 David Wong

Fishes

Windsor Aguirre
 Thomas Anton
 Bay Beach Wildlife Sanctuary
 Mark Sabaj Perez
 John Phillips
 Alan Resetar^E
 Kevin Swagel^E
 Philip Willink^E

Insects

Albert Allen
 Dr. John M. Bates^E
 Kyle Bradford
 C. E. Carlton
 Dr. Stylianos Chatzimanolis
 Johnathan Choi
 M. L. Draney
 M. Ferro
 Mr. Rudolf Gabzdil
 Dr. Steven M. Goodman^E
 H. A. Hespenheide
 Betty Hill
 M. Jorgensen
 Michael Kippenhan
 Patrick Leacock^E
 Julian J. Lewis
 Dr. Robert Lücking^E

David Matusik
 J. V. McHugh
 Dirk Mezger^E
 Dr. Paula Mikkelsen
 F. C. Mosher^E
 Dr. Roy A. Norton
 Robert L. Otto
 Dr. Stewart B. Peck
 Dr. Philip D. Perkins
 R. Probst
 Éllie Reese
 Rodney Rood
 Dr. Walter Rossi
 D. S. Sikes
 Christopher Warenke
 R. L. Westcott

Invertebrates

Diva Amon
 Rüdiger Bieler^E
 Broward Shell Club
 Jochen Gerber^E
 Dr. Steven M. Goodman^E
 Dr. Lawrence R. Heaney^E
 Jenna Judge
 Katrin Linse
 Paula M. Mikkelsen
 Elizabeth R. Petit
 Fabricio Scarabino
 John Wilk

Mammals

Bay Beach Wildlife Sanctuary
 Danny Balete
 Brookfield Zoo
 Chicago Bird Collision
 Monitors
 Terry Demos
 Dr. Steven M. Goodman^E
 Dr. Lawrence R. Heaney^E
 Julian Kerbis
 Minnesota Department of
 Natural Resources
 Bruce Patterson^E
 Noe de la Sancha
 Dr. William T. Stanley^{ED}
 Willowbrook Wildlife Haven

Cover: © The Field Museum, A115163d_032, photographer Karen Bean. Inside cover: © The Field Museum, CE_374_102315, photographer Cheryl Eisenberg (outside); photograph courtesy of Archaeological Museum of Pella (middle); © The Field Museum, A114798d_002, photographer John Weinstein (inside). P. 1: © The Field Museum, GN92236_033Bd, photographer John Weinstein. P. 2: © The Field Museum, A115201d_014, photographer Karen Bean (left); © The Field Museum, A115183d_002A, photographer John Weinstein (right). P. 3: © The Field Museum—GN92142_021d (top), A114245d_001 (middle)—photographer John Weinstein; © The Field Museum, GN92138_044d, photographer Karen Bean (bottom). P. 4: © The Field Museum, GN92150_48d, photographer John Weinstein (top); © The Field Museum, photographer Kelsey Keaton (bottom). P. 5: © The Field Museum, GN92150_10_12_15d, photographer John Weinstein. P. 6: © The Field Museum—A114798d_002 (top), A114800d_05E (bottom)—photographer John Weinstein. P. 7: © The Field Museum, GN92191_016d, photographer John Weinstein (top); © The Field Museum, photographers Daniel Le and Allie Stone (bottom left); photograph courtesy of Sarah Rivers (bottom right). P. 8: © The Field Museum, CSA52793 (top); © The Field Museum, GN92106_025Ad, photographer John Weinstein (middle); illustration courtesy of Sean McMahon (bottom). P. 9: © The Field Museum, A114810d_008, photographer John Weinstein (top); photograph courtesy of Mark Lopez, Argonne National Laboratory (bottom). P. 10: © The Field Museum, GN92024_143Bd, photographer John Weinstein. P. 11: © The Field Museum, A114448_12d, photographer John Weinstein (top); © The Field Museum, photographer Maggie Baker (middle); © The Field Museum, photographer Linda M. Nicholas (bottom left); photograph courtesy of Roger Smith (bottom right). P. 12: Image courtesy of Hinchliff et al., PNAS 112:41 (top); photograph courtesy of Greg Poulakis (middle); photograph courtesy of Association Vahatra (bottom). P. 13: © The Field Museum, GN92120_387Ad, photographer John Weinstein. P. 14: © The Field Museum, GN92261_055Bd, photographer John Weinstein (top); © The Field Museum, photographer Alvaro del Campo (bottom). P. 15: © The Field Museum, photographer Alvaro del Campo; © The Field Museum, photographer Corine Vriesendorp (bottom). P. 16: © The Field Museum, photographer Robb Telfer. P. 17: photograph courtesy of UPI, photographer Brian Kersey (top); © The Field Museum, photographer Robb Telfer (bottom). P. 18: photograph courtesy of Archaeological Museum of Pella (left); photograph courtesy of Museum of the Royal Tombs of Aigai, Vergina (right). P. 19: © The Field Museum, GN92205_123d, photographer John Weinstein (left); photograph courtesy of Archaeological Museum of Sparta. P. 20: © The Field Museum—GN91323_04d (top), GN91322_160d (bottom)—photographer John Weinstein. P. 21: photograph courtesy of Renee Latronica (top left); © The Field Museum, GN91877_044d, photographer Karen Bean (top right); illustration courtesy of Site Design Group, Ltd (bottom). P. 22: © The Field Museum—GN92080_131d (top), GN92180_025d (bottom)—photographer John Weinstein. P. 23: © The Field Museum—GN92087_139d (top), GN92144_022Ad (bottom left), GN92202_090Ad (bottom right) – photographer John Weinstein. P. 24: © The Field Museum – GN92183_020Ad (top), GN92149_017d (bottom)—photographer John Weinstein; illustration courtesy of On The Scene Event Management (middle). P. 25: © The Field Museum, photographer Jean Lachat (top); © The Field Museum, GN92155_007d, photographer Karen Bean. P. 26: © The Field Museum, GN92171_014Ad, photographer John Weinstein. P. 29: © The Field Museum—GN92192_352Ad (top), GN92192_147d (right)—photographer John Weinstein. P. 31: © The Field Museum, GN91166_66d, photographer John Weinstein. P. 34: photograph courtesy of Northwestern magazine. P. 39: © The Field Museum. P. 40: © The Field Museum, GN92194_010Ad, photographer John Weinstein. P. 43: photograph courtesy of the family of Stanton Cook. P. 47: photograph courtesy of Fay and Dan Levin. P. 50: © The Field Museum, GN92121_049d, photographer Karen Bean. P. 51: © The Field Museum, photographer Keith Nixon Photography. P. 52: photograph courtesy of Jim W. Croft. P. 54: © The Field Museum—GN91774_043Bd (top), GN91604_18d (middle)—photographer John Weinstein; image courtesy of Pat Bradley, Brad Dunn, and Greg Mercer (bottom). Inside back cover: © The Field Museum, A115030d_005, photographer Karen Bean.

If you feel an error has been made in presenting this donor honor roll, please contact the Office of Institutional Advancement at annualreport@fieldmuseum.org.

Publisher:

Charles L. Katzenmeyer

Project Manager and Editor:

Ellen Woodward

Contributors: Mark Alvey, Deborah Bekken, Catie Boehmer, Beth Crownover, Aimee Davis, Jenny Flowers, Eve Gaus, Erin Meyer, Wendy Quinlan, Jeanette Rodriguez, Usha Subramanian, and John Weinstein.

Designer: Bark Design, Chicago

Printer: The Fox Company, Milwaukee, WI



The Field Museum gratefully acknowledges the generous support it receives from the Chicago Park District, on behalf of the people of Chicago.

© The Field Museum, all rights reserved.



Digital edition:

fieldmuseum.org/about/annual-reports

I N M E M O R Y

BILL
STANLEY



In October of 2015, The Field Museum lost one of its greatest treasures with the passing of Bill Stanley, PhD, Director of the Gantz Family Collections Center and Negaunee Collection Manager of Mammals. Bill passed away while conducting field work and training young scientists in Ethiopia. Bill was a dedicated and passionate scientist committed to understanding the capacity of natural history collections to teach us about our world, or as Bill would say, “to discover what makes this planet tick.” Bill began his career at the Museum in 1989; over the years he conducted countless field trips to Africa, trained dozens of interns and students, published more than 70 scientific papers, and mesmerized tens of thousands of visitors at Field Museum Members’ Nights—and he did it all with exuberance, enthusiasm, and joy.

Bill’s family and his childhood in East Africa helped cultivate his love for both nature and science. Bill was an inspiration to his colleagues and friends at the Museum and is greatly missed. To commemorate Bill’s earliest experiences in natural history and spread his message about encouraging young scientists, Museum staff created the short film *The Switch: A Bill Stanley Story* which won a Gold MUSE Award from the American Alliance of Museums.

The Field Museum community is committed to continuing Bill’s legacy. The Bill Stanley Memorial Fund supports ongoing work inspired by Bill’s greatest passions at the Museum—collections, training, and the natural history of Africa. Contributions to The Bill Stanley Memorial Fund will support the interface of exploration and training with Field Museum collections, with special opportunities for students from Africa. To make a gift in Bill’s memory and to see the short film *The Switch: A Bill Stanley Story* visit fieldmuseum.org/stanley.

The Qingming Shanghe Tu is a 27-foot-long hand painting. A digital version is mounted on a touch table in the *Cyrus Tang Hall of China*. Visitors can zoom in and out to examine details and explore vignettes highlighted with pop-up text. The scroll is also available for viewing online at fieldmuseum.org/qingming-scroll.



T
H
A
N
K
Y
O
U



The Field
Museum

1400 South Lake Shore Drive | Chicago, Illinois 60605-2496 | fieldmuseum.org