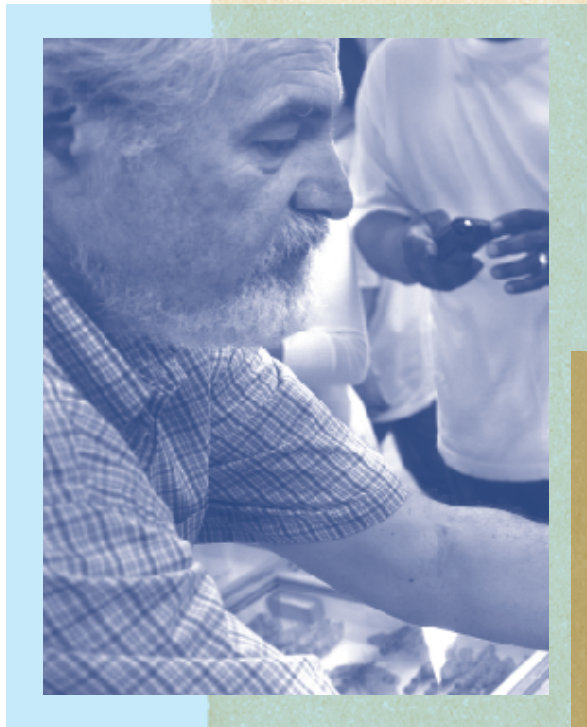


2010 ANNUAL REPORT



THE FIELD MUSEUM
OF NATURAL HISTORY

The **Field**
Museum

INTRODUCTORY LETTER

Hunting for meteorites. Exploring the Pacific floor. Unearthing dinosaurs in Antarctica. Tracking emerging African wildlife diseases. These were just a handful of the research programs conducted in 2010 by Field Museum staff.

Despite the past year's many challenges, the Museum focused its resources on extending our mission by investing in core programs and leveraging new, strategic partnerships. Throughout 2010, we welcomed 1.26 million visitors, inspired 575,000 students, supported research or conservation programs in 20 countries, and grew our collections to more than 24 million specimens.

2010 also marked the 10th anniversary of *Sue* – the largest and best preserved *Tyrannosaurus rex* ever discovered – at The Field Museum. Over the past decade, more than 15 million children and adults visited *Sue*, wondering about her life and times. A further 10 million people in 50 cities – from Tokyo to Abu Dhabi – have seen *Sue*'s traveling exhibition. In honor of this incredible dinosaur, we declared 2010 the *Year of Sue* and celebrated by opening the highly successful exhibition *RoboSUE* and commissioning a new 3D movie about her life.

Finally, we unveiled a new online presence to the world. The new *FieldMuseum.org* website transforms the Museum into an innovative, interactive educational resource. Online visitors can learn about exhibitions, explore rarely seen collections, chat with curators, plan custom trips, watch videos about our behind the scenes work, and share ideas with people locally and globally.

Thank you for supporting the Museum. We hope you enjoy reading about our 2010 accomplishments in the following report.

Sincerely,



JOHN A. CANNING, JR.
CHAIRMAN



JOHN W. MCCARTER, JR.
PRESIDENT AND CEO



Throughout 2010, we welcomed 1.26 million visitors, inspired 575,000 students, supported research or conservation programs in 20 countries, and grew our collections to more than 24 million specimens.



BUILDING PARTNERSHIPS TO IMPROVE SCIENCE EDUCATION

Children with limited opportunities to explore science and nature often fail to develop a basic understanding of scientific concepts – an unfortunate trend that is growing as schools facing budget shortfalls reduce funding for the sciences. To overcome this barrier, last year the Museum partnered with area schools and our sister institutions to create new programs that address science education needs facing Chicago's students.

An example is our collaboration with PNC Financial Services Group's *Chicago Grow Up Great* program. Through this three-year initiative The Field Museum will work with the Adler Planetarium, the Museum of Science and Industry, and the Shedd Aquarium to create activities that engage hundreds of families at some of Chicago's most disadvantaged schools in science learning outside of the classroom.



The Museum also created the *Parents as Educators* program with the Erikson Institute to help parents learn how to teach science using everyday objects and museum exhibits. We also created a monthly *Crown Family PlayLab*

E-newsletter to provide support for parents seeking innovative ways of learning with their young children. Each issue features hands-on activities, parent resources, and sneak peeks at upcoming family programs at the Museum.

...last year the Museum partnered with area schools and our sister institutions to create new programs that address science education needs facing Chicago's students.

Digital programs, especially online games and social networking, help students utilize a new medium to assimilate information, put it into context, and then solve problems. Building on this concept, the Museum partnered with Carnegie Mellon University to create a game for middle school students called *Invasion*. Positioning players in the role of a scientific advisor to the Army Corps of Engineers, the goal of *Invasion* is to prevent Asian Carp from invading Lake Michigan. Players must perform significant tasks to achieve the goal, which includes completing environmental research, developing a plan, and implementing public relations efforts. This entertaining and interactive platform helps children conceptualize the complexities of environmental science.

In addition to these new programs, our Education Department continued the Museum's tradition of presenting innovative public programs. Throughout the year, 663,000 visitors participated in more than 2,400 workshops, lectures, festivals, training programs, field trips, demonstrations and community programs.



UNDERSTANDING AND PRESERVING LIFE

If you had to make sense of 24 million items documenting the history of life, from 4 billion year old bacteria to birds collected last week, how would you do it? This is the question faced by the Museum's scientific staff every day. The answer is that we need help from colleagues worldwide.

Collaboration is a critical element of the Museum's scientific work. Last year, 6,500 students and researchers from 30 countries visited the Museum's collections and we loaned 37,000 specimens to institutions spanning the globe. To maximize resources, our staff creatively leveraged their partnerships last year to undertake new research programs, expand our scientific capabilities and share our collections with the world.

- ◆ Zoologists working on our Emerging Pathogens Project teamed up with the Government of Malawi, US Centers for Disease Control, and other institutions, to undertake a three-month expedition in the small central African nation of Malawi. A diverse team of 23 researchers collected 803 birds and 268 mammals – making this the largest expedition ever completed by The Field Museum, and likely any other research institution.
- ◆ Anthropology and Geology Collections staff partnered with Siemens Medical Solutions to secure the donation of a new digital x-ray machine. The new unit greatly extends the Museum's research capabilities, especially with regard to the preparation of fossils, the study of

archaeological specimens, and comparative anatomy studies. Its digital format will also allow our staff to send detailed images of key specimens to researchers worldwide.

- ◆ Zoologist Larry Heaney collaborated with the Philippine Department of Environment and Natural Resources and his Filipino colleagues to launch a new website on Philippine Mammals. The Philippine Mammals *website* (www.fmnh.org/philippine_mammals/) contains detailed information on the features, distribution, ecology, and conservation status (with accompanying photographs) for all 206-mammal species now known from the country. This is the first time such complete information is readily available to researchers.

Other noteworthy scientific collaborations from the past year include:

- ◆ Zoologists Janet Voight and Leo Smith undertook a successful expedition to the California coast with colleagues from the Scripps Oceanographic Institution, collecting hundreds of little known sea creatures living as deep as 10,000 feet.
- ◆ DNA Lab Manager Kevin Feldheim and colleagues proved that several species of shark could have virgin births resulting in genetically viable offspring.
- ◆ Paleontologist Ken Angielczyk and colleagues discovered a dinosaur-like animal that lived about 10 million years earlier than the oldest known dinosaurs.
- ◆ Anthropologists Gary Feinman and Linda Nichols collaborated with Dr. Fang Hui of Shandong University to rewrite the colonial history of China's First Emperor.
- ◆ Botanist Thorsten Lumbsch collaborated with colleagues at the National Museums of Kenya to launch the first program to document East Africa's lichens.





CONSERVATION PARTNERSHIPS

The Field Museum's division of Environment, Culture, and Conservation (ECCo) worked both locally and globally to achieve major strides through effective partnerships during 2010.

In recognition of successful collaboration, ECCo received the U.S. Department of Interior's "Partners in Conservation" award along with Chicago Wilderness. Other effective partnerships locally include:

- ◆ ECCo and a team of advisors worked with The Chicago Metropolitan Agency for Planning to create a visionary 2040 plan that puts conservation front and center in future development decisions for the region.
- ◆ ECCo's climate programs are advancing through two initiatives that have made the Chicagoland region a national leader in this arena: The *Chicago Climate Action Plan* focusing on the City and the built environment, and the *Climate Action Plan for Nature* focusing on nature and actions that will help important species in our region adapt to anticipated changes.
- ◆ ECCo hosted a public forum at The Field Museum as part of *America's Great Outdoors Initiative* to help create a national agenda for conservation and recreation. More than 350 people participated.

Globally, the ECCo team conducts rapid biological and social inventories with locally based partners in largely unexplored areas.

In 2010 the ECCo team worked in northeastern Peru with local scientists, residents, and institutions to conserve some of Earth's most species-rich forests. The local partners are ready for, and committed to, follow-up action for conservation.

Since 1999, The Field Museum's ECCo division has conducted inventories that brought together 154 rural communities, 249 expert colleagues, and 76 partner institutions. More than 250 species new to science have been discovered in these inventories and ECCo's work has increased the known ranges for more than 1,000 species.

The ultimate result of The Field Museum's ECCo collaborations are spectacular for biodiversity and for the livelihoods of neighboring communities: 33 million acres of tropical wilderness are now protected (12 new conservation areas and an additional 9 with new scientific information) or are on the road to protection (7 areas).





ENGAGING THE PUBLIC IN SCIENCE

Exhibitions are The Field Museum's most popular form of education outreach. Through exhibitions, visitors learn about a wide range of topics, from the latest advances in genetics to how ancient people in the Pacific adapted to their island lifestyle. In 2011, 1.2 million visitors experienced the Museum's 37 permanent exhibitions as well as temporary exhibitions such as:

- ◆ *Climate Change*
- ◆ *Gold*
- ◆ *The Romance of Ants*
- ◆ *Portraits of Resilience*
- ◆ *Traditions Retold: Mexican Nativity Scenes*

The Museum also leveraged its own collections and curatorial expertise to create three all-new exhibitions:



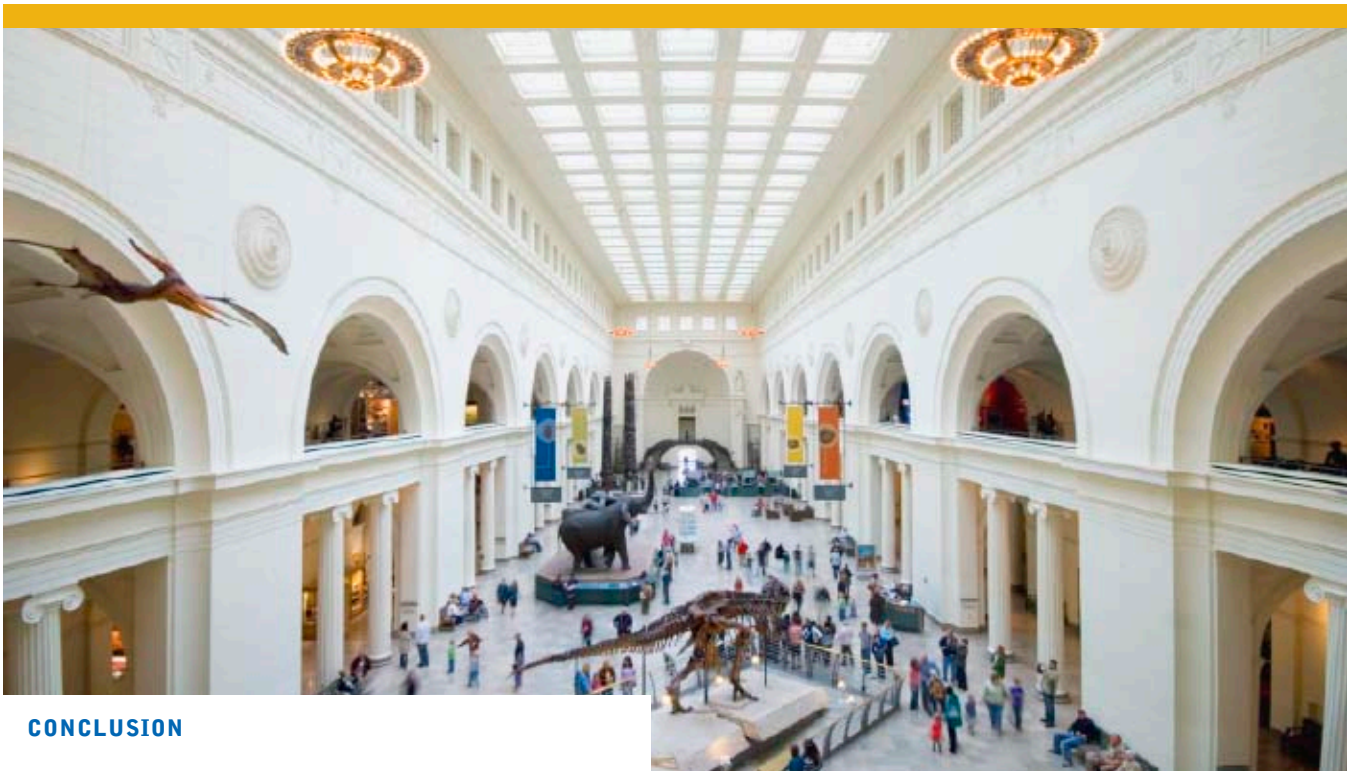
Mammoths and Mastodons: Titans of The Ice Age

explored mysteries surrounding the last Ice Age. This family-friendly exhibition explored the differences between mammoths and mastodons, and their distant relatives, modern-day elephants. The exhibition's main attraction was Lyuba, a 42,000-year-old baby mammoth and the best-preserved specimen ever discovered. This innovative exhibition also used video installations, hands-on interactive displays, and life-sized models of fossil tusks and skulls, including touchable teeth, to make this an unforgettable experience for people of all ages.

RoboSUE: The T. rex Experience used advanced robotics and pioneering face recognition technology to give visitors an experience of a lifetime. These robotic dinosaurs interacted with visitors by reacting to their moves, not just by sensing if a person is standing there, but also by making decisions about body language and the number of people nearby. Raptors, Triceratops, and a robotic SUE roared and used video cameras to display, in real-time, what visitors look like in the eyes of a dinosaur!

Lasting Impressions: Chinese Rubbings from The Field Museum

was a breath-taking and artistic display of 40 select items from The Field Museum's Chinese collections. Rubbings taken from stone carvings were a vital medium for preserving China's art, culture, and history for over 1,500 years. Due to the large number of items in our collection, as well as the number of rare and historically important pieces, the Museum's collection is the best outside of East Asia.



CONCLUSION

THE FIELD MUSEUM OFFERS STRIKING SUPPORT TO THE saying there is nothing new under the Sun. Our collections document the history of life and provide important clues about how different organisms adapted to environmental challenges. In the coming year, we will use these clues to help develop practical responses to modern day issues such as global warming, deforestation, and diminishing natural resources.

Our collections document the history of life and provide important clues about how different organisms adapted to environmental challenges.

We also will share the results of this work through two new permanent exhibitions, the *Gary C. Comer Family Gallery* and the *Abbott Hall of Conservation Restoring Earth*. Opening in May 2011, the *Gary C. Comer Family Gallery* will feature temporary displays on topics such as environmental sustainability, wildlife management, and climate change. The *Abbott Hall of Conservation Restoring Earth* opens in November 2011. Its interactive displays will explore the Museum's efforts to protect the Earth's resources and help visitors understand why conservation means more than recycling. The *Abbott Hall of Conservation Restoring Earth* will also mark The Field Museum's 10th all-new permanent exhibition since 2004.

Finally, we welcome you to visit The Field Museum in 2011 to help us celebrate a number of milestones including the 100th birthday of our famed brontosaurus, the 90th anniversary of our iconic building, and the 5th anniversary of *The Kenneth and Anne Griffin Halls of Evolving Planet*.

These milestones are a direct result of your investment in The Field and we are grateful for your support. Thank you for making The Field Museum an international success.



STATEMENT OF BUDGETED OPERATING ACTIVITIES

for the year ended December 31, 2010

Statement of Financial Position as
of December 31, 2010
(in millions of dollars)

Assets	Rounded
Cash	\$1.2
Interest and Dividends Receivable	0.3
Accounts Receivable	3.1
Pledges Receivable	7.2
Museum Stores Inventory	1.5
Investments	310.6
Museum Property	264.9
Other Assets	5.0
Total	\$593.8

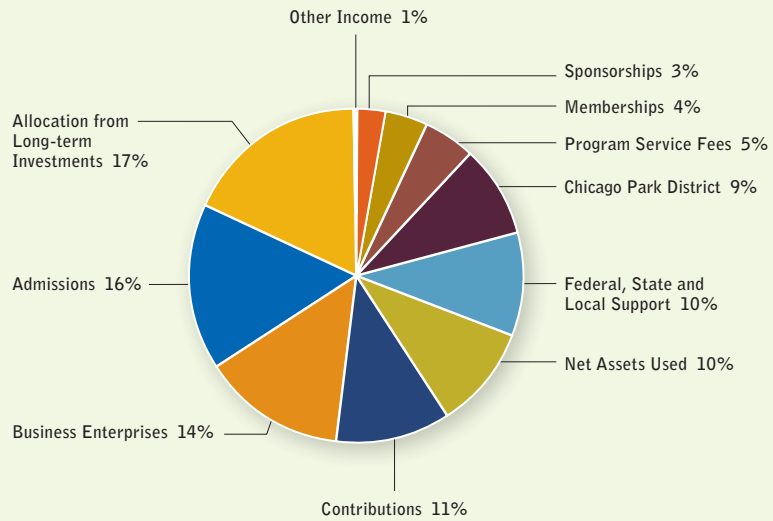
Liabilities and Net Assets	Rounded
<i>Liabilities:</i>	
Notes payable and Line of credit	\$187.9
Accounts Payable and Accrued	6.8
Deferred Revenue	5.9
Asset Retirement Obligations	9.0
Accrued Pension Cost	7.8
Interest Rate Swap	12.1
Total Liabilities	\$229.5

<i>Net Assets:</i>	
Unrestricted	\$226.4
Temporarily Restricted	71.0
Permanently Restricted	66.9
Total Net Assets	\$364.3

Total **\$593.8**

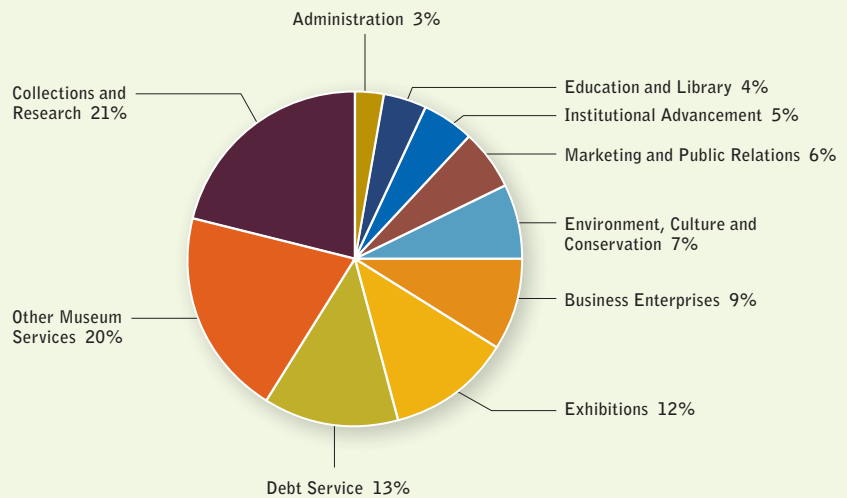
Operating Budget Revenue and Other Support

Total \$68.0 million



Operating Budget Expenditures

Total \$64.7 million



In collaboration with the Board of Trustees and an outside consultant, the Museum began an objective programmatic and fiscal assessment of the institution. Several action points were noted from the results and a five-year "Plan for Financial Stability" (Plan) was developed that would begin to refine the dual scientific and educational missions of the institution and start to strengthen its financial position for long-term stability.

The Plan uses the 2010 Unrestricted Operating Budget as the base for change and targets 2012 as the Plan's first of a five-year strategy. By the end of the third quarter of 2010, several tactics of the report were implemented; the first being to right-size the cost structure of the institution to be more consistent with its unrestricted revenue sources. Total cost reductions included more than \$5.3 million with a strategic investment of \$300,000 made for digital technologies improvements. Much of the cost reductions were obtained through staff reductions from an early retirement and voluntary separation packages, as well as programming changes for temporary exhibitions, the scientific departments, and educational outreach, among others. The results were successful with the Museum ending the year with net revenue and other support of \$3.3 million. FY 2011 will conclude the cost reduction strategy of the Plan and will position FY 2012 as the first year of the five-year strategy.

Operating Budget Revenue and Other Support

The 2010 operating budget revenue was \$61.6 million. This amount was \$1.3 million or 2% over budget goals. Revenue generating areas with significant budget to actual results included: *Government and private grants and contracts*, which was 25% over budget due to the receipt of additional awards in 2010; *Contributions*, which ended 17% over budget with strong support from corporations, foundations, and individual giving, as well as auxiliary groups/Women's Board events; *Admission* revenue was 9% under budget expectation. Total visitor attendance in 2010 was 1.2 million of which 629,089 were paying public hour guests. This was 33,653 fewer than 2009. *Business enterprises* was 7% under budget; however, it was able to manage expenses throughout the year and exceeded its net revenue goal by \$411,636.

Operating Budget Expenditures

Operating budget expenditures in 2010 were \$64.7 million. Expenses were 5% under budget as of December 31, 2010 and 6% more than the 2009 actual expenses. The decrease was due to the successful implementation of the Plan.

CHANGE IN NET ASSETS

The Museum's Statement of Financial Position reflects the upturn in the financial markets that occurred in 2010. As of December 31, 2010, net assets increased 2%, to \$364.3 million from \$358.4 million from the previous year. Unrestricted net assets totaled \$226.4 million at year end, while temporarily restricted net assets were \$71.0 million, and permanently restricted net assets were \$66.9 million. This compares to 2009 unrestricted net assets of \$224.1 million, temporarily restricted net assets of \$70.4 million, and permanently restricted net assets of \$63.7 million.

Total assets increased by 2% from \$583.5 million in 2009 to \$593.8 million as of December 31, 2010. The largest asset categories were investments of \$310.6 million and Museum property (shown net of accumulated depreciation) of \$264.9 million. The increase in asset value was due in large part to the recovery in the market value of institutional investments (the endowment and the funds functioning as endowment) that increased by \$23.8 million or 8% from 2009. Total liabilities increased by \$4.4 million or 2%. The largest liability category is notes payable, which ended the year at \$179.0 million. The obligation for interest rate swaps increased by \$3.5 million due to change in fair market value, and the bank line of credit increased by \$1.3 million in 2010. Other increases in liabilities include accrued expenses of \$683,614 related to the early retirement and voluntary separation packages and accrued pension cost of \$172,597. Decreases in liabilities were accounts payable of \$655,697 and deferred revenue of \$625,981 due in part to the outbound traveling exhibitions schedule.

Overall Financial Performance in 2010

Overall, 2010 was another challenging year for the Museum as it successfully implemented the first phase of the Plan for Financial Stability. Museum investments saw positive results with the continued growth of the financial markets; however, the Museum will continue to actively monitor for volatility.

The complete audited financial statements for The Field Museum for the year ended December 31, 2010 are available on the Web at <http://fieldmuseum.org/audit> or by writing to the Office of the Controller, 1400 South Lake Shore Drive, Chicago, Illinois 60605.



2010 DONOR LISTS

The Board of Trustees Pg. 11

Restricted Gifts and Grants Pg. 12

- ◆ Individual
- ◆ Corporate, Foundation and Public Entities

Unrestricted Gifts and Grants Pg. 16

- ◆ Chairman’s Circle
- ◆ The Founders’ Council
- ◆ The Annual Fund
- ◆ Corporate Relations Program
- ◆ Unrestricted Corporate and Foundation

The Women’s Board Pg. 17

Commemorative Gifts Pg. 20

Edward Ayer Society Pg. 20

Estate Gifts and Bequests Pg. 21

Matching Gifts and Grants Pg. 21

In-Kind Contributions Pg. 21

Donated Collections Pg. 21

Staff Contributions Pg. 24

Volunteer Leadership Pg. 24

THE BOARD OF TRUSTEES

Officers:

John A. Canning, Jr.
Chairman
Anthony K. Anderson
Vice Chairman, Public Programs
Howard B. Bernick
Vice Chairman, Pension
Judith S. Block
Assistant Secretary
Norman R. Bobins
Vice Chairman, External Affairs
James A. Delaney III
Vice Chairman, Budget
Michael W. Ferro, Jr.
Assistant Secretary
Marshall Field
Vice Chairman, Development Assistant Secretary

James S. Frank
Vice Chairman, Facilities
Marshall B. Front
Vice Chairman, Investment
Wilbur H. Gantz III
Vice Chairman, Science
John W. McCarter, Jr.
President and CEO
James O'Connor, Jr.
Vice Chairman, Technology
Peter B. Pond
Vice Chairman, Finance
John W. Rowe
Vice Chairman, Governance
Kimberly Querrey
Secretary
Kelly R. Welsh
Vice Chairman, Audit
Miles D. White
Immediate Past Chairman
Linda S. Wolf
Vice Chairman, Marketing



Trustees

Wendy Abrams
James L. Alexander
Ralph Alvarez x
Anthony K. Anderson
John R. Anderson
Susan M. Benton
Tom Bernardin
Howard B. Bernick
Judith S. Block
Norman R. Bobins
Gail K. Boudreaux •
John L. Bucksbaum
John A. Canning, Jr.
Gregory C. Case
Richard A. Chaifetz
Robin T. Colburn
Michelle L. Collins x
Robert W. Crawford, Jr.
James A. Delaney III
Louis T. Delgado
Roger K. Deromedi
Janet J. Duchossois
Richard Elden
Michael W. Ferro, Jr.
Jamee C. Field
Marshall Field
Janice L. Fields (1)
David W. Fox, Jr.
James S. Frank
Marshall B. Front
J. Erik Fyrwald
Wilbur H. Gantz III
Ronald J. Gidwitz
Sue Ling Gin
Antonio J. Gracias
Judson C. Green
Jack M. Greenberg
Judith P. Greffin (2)
Lewis S. Gruber
David A. Helfand
David G. Herro

David D. Hiller
Mellody L. Hobson
Gary E. HoldrenX
Cheryle R. Jackson
Bryant L. Keil
Michael L. Keiser
Constance T. Keller
Richard L. Keyser
William C. Kunkler III
Randolph R. Kurtz
Diane von Schlegell Levy
Cary J. Malkin
John W. McCarter, Jr.
Andrew J. McKenna, Jr. x
W. James McNerney, Jr.
Bobby Mehta
Leo F. Mullin •
Clare Muñana
Neil S. Novich
James J. O'Connor, Jr.
Aurie A. Pennick
Peter B. Pond
J.B. Pritzker
Kimberly Querrey
M. Jude Reyes
Larry D. Richman
Thomas Ricketts (3)
John W. Rowe
Patrick G. Ryan, Jr.
Michael J. Sacks (4)
Louis L. Schorsch (5)
Nydia Santos Searle
Alejandro P. Silva
Adele S. Simmons
Maureen Dwyer Smith
David B. Speer
Michael Tang
Glenn F. Tilton
David M. Tolmie
Joseph V. Tripodi x
Everett S. Ward
Laura S. Washington
Kelly R. Welsh

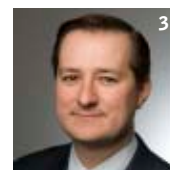
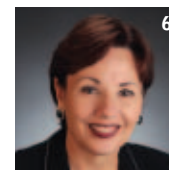
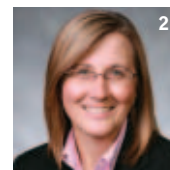
Miles D. White
W. Rockwell Wirtz
Linda S. Wolf

Ex-Officio Trustees

Ex-Officio Trustees
Laura Ferris Anderson x
Frances A. Beatty x
Gery J. Chico x
Jeani Jernstedt (6)
Judith K. Lavender
Robert B. Loveman
Bryan S. Traubert (7)

Life Trustees

Mrs. T. Stanton Armour
Charles W. Benton
Willard L. Boyd
Worley H. Clark, Jr.
James W. Compton
Frank W. Considine
Stanton R. Cook
Thomas E. Donnelley II
Mrs. David W. Grainger
Mrs. Robert S. Hartman
Wayne E. Hedien
Doris B. Holleb
Richard M. Jones
William H. Kurtis
Scott P. Marks, Jr.
Hugo J. Melvoin
James J. O'Connor, Sr.
Richard J. Pigott
Robert A. Pritzker
Robert L. Wesley
William J. White
Blaine J. Yarrington



KEY FOR TRUSTEES:

• National Trustee
x Term Concluded in 2010

New trustees are numbered for photos.

RESTRICTED GIFTS AND GRANTS

Restricted gifts and grants are contributions from individuals, foundations, corporations and public entities designated for specific programs

Individual and Family Foundations

\$1,000,000 to \$2,999,999

Harris Family Foundation
Biodiversity Synthesis Center
Kimberly Querrey* and Louis Allen Simpson
Educational Programs
John W.* and Jeanne M. Rowe
Rowe Family Curator of Evolutionary Biology
Robert M. and Diane* von Schlegell Levy
General Operations Fund
The Women's Board
General Operations Fund
Women in Science Fellowship

\$100,000 to \$999,999

Anonymous
Anthropology Oaxaca Research
Biological Anthropology Research
Near East and Northwestern Africa Research
Mr.* and Mrs. John A. Canning, Jr.
Operating Support
The Davee Foundation
Emerging Pathogens Project
Wilbur* and Linda Gantz
Birds Collection Management Endowment
Environmental Conservation Programs
Ornithologist's Research Fund
Kenneth and Anne Griffin
Robo Sue Exhibition
SUElebration
Mr. and Mrs.* Dennis J. Keller
Council on Africa
Environmental Programs
Field Dreams Anthropology
Mr. and Mrs. Richard L. Keyser*
Biodiversity Synthesis Center
Lewis and Susan Manilow
Biodiversity Synthesis Center
The Negaunee Foundation*
Anthropology Fund
Botany Fund
Collections and Research Fund
Donnelley Research Fund
Expeditions at The Field Museum
Geology Fund
Mammals Fund
Web Based Conservation
Zoology Fund

The Segal Family Foundation
Special Programs

\$25,000 to \$99,999

Anonymous
Geology Fund
Anonymous
The Horse Exhibition
Anonymous
The Horse Exhibition

Bobolink Foundation
Environmental Programs
Philip Enquist and Joanna Karatzas
Water Exhibition
Mr.* and Mrs. J. Erik Fyrwald
Environmental Conservation Programs
Mr. Steve M. Goodman^ and Ms. Asmina Goodman
Madagascar Research Fund
Mr.* and Mrs. Antonio J. Gracias
Biodiversity Synthesis Center
Mrs. Harold H. Hines, Jr.
Anthropology Fund
Mummy Scanning Project
Mrs. Withrow W. Meeker
Environmental Programs
Field Dreams Zoology
Mr.* and Mrs. Bobby Mehta
Educational Programs
SUElebration
Harold M. and Adeline S. Morrison Family Foundation
Environmental Programs
J.B.* and MK Pritzker
Evergreen Farm
The Horse Exhibition
Bob and Charlene Shaw
Anthropology Fund
Mr.* and Mrs. David M. Tolmie
Council on Africa
Salary Support
Mr. Fred L. Turner
SUElebration

\$10,000 to \$24,999

Sue and Stephen Baird
CCUC
Field Dreams Anthropology
Mr. and Mrs. James H. Bankard
Botany Fund
Mrs. Joyce E. Chelberg
Anthropology Fund
SUElebration

Janet* and Craig Duchossois
Field Dreams Anthropology
SUElebration
Efroymsen – Hamid Family Foundation
Crown Family PlayLab
SUElebration
Jack Fuller and Debra Moskovits^
Environmental Programs
Dr. Jonathan Haas^ and Dr. Winifred Creamer^
Americas Research
Mr. and Mrs. Edward Kovas
The Horse Exhibition
Mr.* and Mrs. W. James McNeerney, Jr.
Environmental Programs
Wendy and Paul Raether
Trelawny Farm LLC
The Horse Exhibition
Mr. Robert D. Rodgers
Ornithologist's Research Fund
Mr. and Mrs. Thomas Tisbo, Tequestian Farms
The Horse Exhibition
David Weinberg and Jerry Newton
Botany Fund
SUElebration

\$5,000 to \$9,999

Anonymous
Anthropology Fund
Botany Fund
Environmental Programs
Pam and Howard Conant, Jr.
Council on Africa
Mr.* and Mrs. Robert W. Crawford, Jr.
Anthropology Fund
SUElebration
Mr.* and Mrs. Roger K. Deromedi
Anthropology Fund
Field Dreams Zoology
SUElebration
Jamee and Marshall * Field
The Horse Exhibition
Mr. and Mrs. Roger S. Griffin
The Horse Exhibition



Mr. and Mrs. Paul G. Haaga, Jr.
Tanzania Research
Mrs. Robert C. Hyndman
Field Dreams Pritzker Lab
Field Dreams Zoology
Mr. and Mrs. John Mangel III
SUElebration
Mr. and Mrs. William A. Osborn
Field Dreams Zoology
Mr. and Mrs. Holmes Rolston III
Madagascar Research
Ms. Cynthia M. Scalzo and Dr. Henry Brown
Field Dreams Anthropology
Charles and M. R. Shapiro Foundation
Crown Family PlayLab
Glenn* and Jacqueline Tilton
The Horse Exhibition
The Warwick Foundation
Botany Fund

\$2,000 to \$4,999

Anonymous
Council on Africa
Mr. and Mrs.* Matthew D. Anderson
SUElebration
Ms. Diana C. Arechar
Andean Research
Merrick and Lindsey Axel
SUElebration
Ms. Mary D. Baniak and Mr. Mike Baniak
Library Fund
Mr. and Mrs. Philip S. Beck
Field Dreams BiosynC
Mr. and Mrs. Randolph Burt
SUElebration
Mark and Connie Crane
Field Dreams Anthropology
Dr. and Mrs. Tapas K. Das Gupta
SUElebration
Mrs. Jerome L. Ettelson
SUElebration
Mary and Bruce Feay
Anthropology Fund
Council on Africa
Ms. Jamee C. Field* / The Edith B. and Lee V. Jacobs Fund No. 1
SUElebration
Dr. and Mrs. James L. Foght
Council on Africa
William and Kathleen Gantz
SUElebration
Ms. Madeline Halac
Andean Research
Dr. Malcolm H. Hast and Dr. Adele Hast
Library Fund
Mammals Fund
Ms. Coleen Huels
Andean Research
Ms. Judy Johanson
Council on Africa
Mr. Bryant L. Keil*
Educational Programs
SUElebration
Barbara Malott Kizziah and Keith Kizziah
SUElebration
Mr. and Mrs. Bruce H. Lauer
Council on Africa

Deborah and Daniel Manoogian
Council on Africa
Heidi and Greg Mayer
SUElebration
Nancy A. McDaniel
Council on Africa
John E. McGovern III
SUElebration
Ms. Anna T. Meyer
SUElebration
Susan Mikalauski
Anthropology Fund
Victoria Martin Myers and John C. Myers IV
SUElebration
Educational Programs
Mr. and Mrs. Walter B. Newsom
Mammals Research Fund
Dr. George B. Rabb
Environmental Programs
Karl P. Schmidt Fellowship Fund
Ms. Helen S. Reed
Tanzania Research
Mrs. Elizabeth D. Rothermel
Tanzania Research
Mr. and Mrs. Steven M. Ryan
Field Dreams Anthropology



Ms. Cynthia M. Scalzo and Dr. Henry Brown
Field Dreams Anthropology
Mr. and Mrs. John D. Schur
Andean Research
Mr. and Mrs. Keith Sova
Andean Research
Mr. and Mrs. Ralph S. Vennetti
SUElebration
Mr. Everett S. Ward* and Ms. Iris Sims
Summer Camp Scholarship
Mr.* and Mrs. W. Rockwell Wirtz
The Horse Exhibition

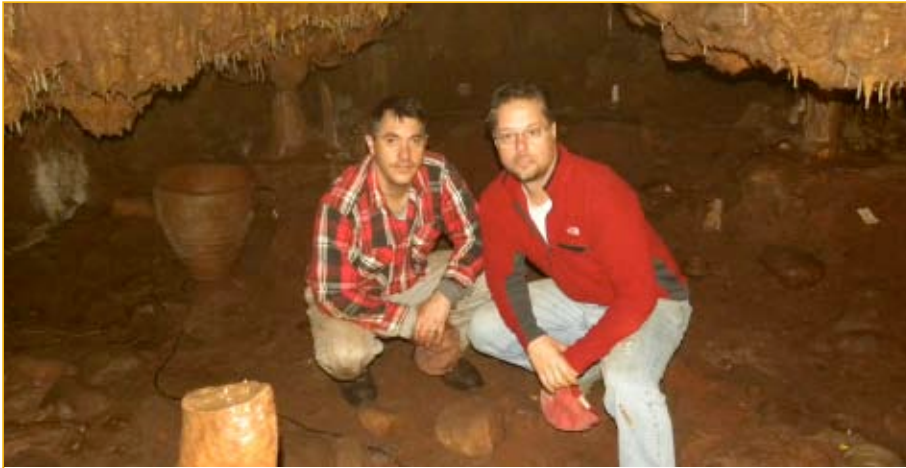
\$1,000 to \$1,999

Anonymous (2)
SUElebration
Mr. Thomas A. Andreoli and Ms. Anne W. Mitchell
SUElebration
Mr. and Mrs. Robert Dean Avery
Zoology Fund
John* and Jackie Bucksbaum
SUElebration
Mr.* and Mrs. Thomas E. Donnelley II
SUElebration

Eric J. Dybal, M.D. FACS
SUElebration
Dr. and Mrs. John S. Garvin
Field Dreams Zoology
Mr. David D. Hiller*
SUElebration
Mr. William C. Kunkler* and Ms. Susan M. Crown
Educational Programs
Ms. Whitney Lasky
SUElebration
Ms. Tan Fui Lian^ and Dr. Robert F. Inger^
Reptile Research Fund
Ms. Renée Logan
Anthropology Fund
Dr. Thorsten H. Lumschch^
Botany Fund
Irma Parker
Anthropology Fund
Albert B. & Audrey G. Ratner Family Foundation
Arctic Studies
Mr. and Mrs. J. Christopher Reyes
Field Dreams Pritzker Lab
Mr. and Mrs. Patrick G. Ryan
Field Dreams Pritzker Lab
Mr. and Mrs. Jeffrey S. Ross
Field Dreams Zoology
Mrs. Gerhart Schild
Botany Fund
The Nelson Insect Endowment Fund
Mr. and Mrs. Richard H. Schnadig
Field Dreams Zoology
Dr. Alissa B. and Mr. Jonathan K. Shulkin
SUElebration
Barbara and David* Speer
Field Dreams Zoology
Monica and Kevin Thompson
SUElebration
Mr. Edward J. Valauskas and Mrs. Nancy John
Geology Fund
Mr. and Mrs. Henry P. Wheeler
Field Dreams Pritzker Lab
Mr. and Mrs. Edward Yastrow
SUElebration

\$500 to \$999

Anonymous
SUElebration
Mr. Brandon Beekman
Educational Programs
Mrs. Deborah Berman and Mr. Elliott Berman
Educational Programs
Mr. and Mrs. Robert Carr
Tanzania Research
Mrs. Robert Adams Carr
Field Dreams Botany
Field Dreams Zoology
Mr. and Mrs. Robert J. Clancy
Tanzania Research
Phyllis Weil Ellis
Anthropology Fund
Laura and Steven Gates
SUElebration
Brent and Catherine Gledhill
SUElebration
Mr. and Mrs. Brad Gupta
SUElebration



Mr. and Mrs. Patrick J. Herbert III
Field Dreams Zoology
Mr. and Mrs. W. Bruce Johnson
Field Dreams Zoology
Ms. Vera Kasmerchak
SUElebration
Mr. and Mrs. Patrick Layng
SUElebration
Mr. and Mrs. Joseph F. Lizzadro, Jr.
SUElebration
Mr. and Mrs. Robert Newberry McCreary
SUElebration
Mr. and Mrs. Thomas T. Macejko
SUElebration
Mr. and Mrs. John G. Maurer
Tanzania Research
Ms. Elisabeth C. Meeker
Field Dreams Zoology
Mr. and Mrs. Richard H. Nicolaides, Jr.
SUElebration
Lynne King Roberts
SUElebration
Adele S. Simmons* and John L. Simmons
Ornithologist's Fund
Ms. Heather T. Sparling
Geology Fund

\$200 to \$499

Hilde K. Achepohl
SUElebration
Jo A. Alisago-Zaleski
Educational Programs
Mr. Curtis Bambule
SUElebration
Ms. Mara Baumgarten
SUElebration
Mr. Bruce A. Behrstock
SUElebration
Ms. Rita L. Bellouze^
Educational Programs
Mr.* and Mrs. Charles W. Benton
Anthropology Fund
Mr.* and Mrs. Norman R. Bobins
Field Dreams Botany
Mr. and Mrs. Nathanael A. Brown
SUElebration
Susan R. Bulley
SUElebration
Dr. and Mrs. Robert Wells Carton
Field Dreams Pritzker Lab

Mr. Mark J. Cozzi
SUElebration
Mr. Hector Cruz
Educational Programs
Ms. Jennifer DAlessandro
Educational Programs
Ms. Joyce Dawson
SUElebration
Mr. and Mrs. Richard Delaney
Educational Programs
Mr. † and Mrs. Benjamin C. Duster
SUElebration
Mr. and Mrs. Edward G. Finnegan, Jr.
SUElebration
Mr. Chad Freese
SUElebration
Mr. Jeff Frost
Educational Programs
Mr. and Mrs. Christopher O. Glass
Field Dreams Zoology
Ms. Angela Grayson
Educational Programs
Mr.* and Mrs. Lewis S. Gruber
SUElebration
Mr. and Mrs. John M. Haight III
Ornithologist's Research
Mr. and Mrs. Matthew Hickey
SUElebration
Mr. and Mrs. Martin Hutti
Educational Programs
Ms. Lynn Jackson
SUElebration
Mrs. Shirley R. Jahn
SUElebration
Mr. and Mrs. Alan G. Johnson
Anthropology Restricted Fund
Mr. and Mrs. Hugh Jones
SUElebration
Charles and Marion Kierscht
Educational Programs
Dr. David H. Kistner
Insect Fund
Mr. and Mrs. Thomas L. Kittle-Kamp
SUElebration
Mr. and Mrs. Adam Klauber
Field Dreams Pritzker Lab
Mr. and Mrs. Joseph Klein
Educational Programs
Ms. Melissa Lindland
SUElebration

Mr. Frank Lizzadro
SUElebration
Mr. Steve Martinez
Educational Programs
Mr. and Mrs. Frank D. Mayer, Jr.
SUElebration
Mr. John Mazzola
Educational Programs
Ms. Mary Claire Moll
SUElebration
Mr. Hector Morales
SUElebration
Clare Muñana*
SUElebration
Mr. Michael Nervick
SUElebration
Mr. and Mrs. Frank Nicholas
SUElebration
Mr. and Mrs. Gary R. Nickels
SUElebration
Mr. and Mrs. Matthew M. O'Connell
Ornithologist's Research
Mr. and Mrs. Richard J. Peterson
African Studies
Ms. Catherine H. Petty
Ornithologist's Research
Mr. and Mrs. Harry A. Pfaff
SUElebration
Ms. Patricia C. Reavy
SUElebration
Mr. Edward Rosary
Educational Programs
Mr. John Samis
SUElebration
Donn Schimp
SUElebration
Ms. Christina Schlag
SUElebration
Frank and Karen Schneider
Council on Africa
Mr. and Mrs. Robert Simmons
Educational Programs
Mr. and Mrs. Darren Snyder
SUElebration
Mr. Kevin L. Stoeckel and
Mrs. Emily Heisley Stoeckel
SUElebration
Monica and Kevin Thompson
Educational Programs
Mr. Zack Vazquez
Educational Programs
Mr. John P. Ver Bockel and
Ms. Kathleen E. Carbonara
Field Dreams Zoology
Mr. and Mrs. John F. Vicha
Human Resources Fund
Mr. Everett S. Ward* and Ms. Iris Sims
SUElebration
Mrs. Sarita Warshawsky
SUElebration
Mr. John Weis
Educational Programs
Mr. Gary Wesley
Educational Programs

Corporate, Foundation and Public Entities

\$5,000,000 or more

Abbott
Abbott Hall of Conservation Restoring Earth
 The Boeing Company
Environment, Culture & Conservation
 The Grainger Foundation
Grainger Fund for Science
Grainger Hall of Gems Renovation
Nature of Diamonds Exhibition
 National Science Foundation
Archaeological and genetic study of the Swahili of East Africa
Assembling the Bivalve Tree of Life
Assembling the Liverwort Tree of Life
Assembling a taxonomic monograph: The Lichen Family Graphidaceae
Bryophyte and Lichen Conversion and Digitization Project
Collaborations in the Elemental Analysis Facility in The Field Museum
Collaborative Research: Worm snails revisited
Doctoral Dissertation Improvement Grant (3)
Infrastructure Research
Origins and Development of Prehistoric European Villages
Prehistoric Settlement Nucleation on the Great Hungarian Plain
Research on Neotropical Epiphytic Microlichens
Research on the Marchantiophyta, Anthocerotophyta and Bryophyta of the Cape Horn Archipelago
Revisionary Taxonomy and The Fossil Record of the Asiloid Flies
 Tawani Foundation
Robert A. Pritzker Center for Meteoritics and Polar Studies

\$1,000,000 to \$4,999,999

Allstate
Nature Unleashed Exhibition
 Exelon Corporation
The Aztec World Exhibition
Climate Change Exhibition
Environment, Culture & Conservation
 John D. and Catherine T. MacArthur Foundation
Climate Change in Madagascar
Cofan Landscape in Northern Ecuador
Encyclopedia of Life
Genetic Diversity in the Albertine Rift
Science Based Conservation at The Field Museum
Strengthening Organizations in Cordillera Azul
 Gordon E. and Betty I. Moore Foundation
Environmental Protection Programs in Bolivia and Peru
 The Andrew W. Mellon Foundation
Ecologists Fund
Global Plants Initiative
 U.S. Department of State
Iraqi Museum Professional Program

\$500,000 to \$999,999

Comer Science and Education Foundation /
 The Gary C. Comer Family
Gary C. Comer Family Gallery
Comer Climate Change Symposia
 Ernst & Young LLP
3D Theater Sponsorship
 Dr. Ralph and Marian Falk Medical Research Trust
Emerging Pathogens Project
 IDP Foundation, Inc.
The Field Museum / IDP Foundation, Inc. African Training Fund
 Polk Bros. Foundation
Collection Resource Center
Early Elementary Science Partnership (E2SP)
 PNC Foundation
Grow Up Great Early Learning
 Prince Albert II of Monaco Foundation
Conservation of Landscapes of Amazonian Peru
 Searle Funds at The Chicago Community Trust
Early Elementary Science Partnership (E2SP)

\$250,000 to \$499,999

Critical Ecosystem Partnership Fund
Vahatra
Small Mammal Study
 Gaylord and Dorothy Donnelley Foundation
Calumet Environmental Education Program (CEEP)
 Hamill Family Foundation
Protecting Diverse Amazonian Lowlands: The Rich Forests of Gueppi
 Motorola Foundation
Climate Change Exhibition
Early Elementary Science Project (E2SP)
 Target
Target Free Second Mondays

\$100,000 to \$249,999

America for Bulgaria Foundation
Collections & Research
 Baker & McKenzie
Marae Gallery Exhibitions
 Blue Moon Fund
Rapid Biological and Social Inventory in Peru
 Caterpillar Foundation
Botany Fund
 Discover
Extreme Mammals Exhibition
National Geographic Live!



Institute for Museums and Library Services
Crown Family PlayLab Programming
 The Joyce Foundation
Water Exhibition
 JRS Biodiversity Foundation
Index for Conservation Compatibility
 Northern Trust
Gold Exhibition
 Wells Fargo
Whales Exhibition
 Winston and Strawn LLP
Environmental Programs

\$50,000 to \$99,999

Barker Welfare Foundation
FieldMuseum.org
 The Brinson Foundation
Crown Family PlayLab Programs
President's Discretionary Fund
 The Bobolink Foundation
Environmental Programs
 The Margaret A. Cargill Foundation
Environmental Programs
 HSBC - North America
Climate Change Exhibition
 JPMorgan Chase & Co.
Teacher Professional Development Programs
 McDougal Family Foundation
Environmental Education Programs
 Sears Holdings Corporation
Dozin' with the Dinos
SUElebration

\$25,000 to \$49,999

ArcelorMittal USA
Calumet Environmental Education Program (CEEP)
 The Robert and Isabelle Bass Foundation, Inc.
Educational Programs
 Elizabeth F. Cheney Foundation
Chinese Rubbings Exhibition
 Ford Motor Company Fund
Calumet Environmental Education Program (CEEP)
 Jones Lang LaSalle
Climate Change Exhibition
 Marsh USA, Inc.
Gold Exhibition
 Pearson Foundation
Digital Educational Programs
 Daniel F. and Ada L. Rice Foundation
Exhibit Fund
 Whole Foods Market
Climate Change Exhibition

\$10,000 to \$24,999

95% Share Marketing, Inc.
Mammals Fund
Ornithologist's Research Fund
Tanzania Research
 Bears Care Fund
Educational Programs
 Circle of Service Foundation
Educational Programs
 David Weinberg Gallery
SUElebration
 Deutsche Bank Americas Foundation
Renewable Energy Vehicle
 Digital 3D Destination LLC
3D Theater
 Sally Mead Hands Foundation
Calumet Environmental Education Program
 I & G Charitable Foundation
Brown Mammal Research Endowment
 Institute for Aegean Prehistory
Anthropology Fund
 James S. Kemper Foundation
Summer Internship Fund
 Nalco
Climate Change Exhibition
 New York Community Trust
Harris Loan Center
 Oracle Education Foundation
Digital Education Programs
 Albert Pick, Jr. Fund
Educational Programs
 Ryan Enterprises Group
SUElebration
 Siragusa Foundation
Crown Family PlayLab Programming
 A. Montgomery Ward Foundation
FieldMuseum.org

\$5,000 to \$9,999

Charles Adams Nature Research Foundation
Botany Fund
 Alberto Culver Company
Educational Programs
 Ariel Investments
Educational Programs
 Max and Victoria Dreyfus Foundation Inc.
Environmental Programs
 Leo S. Guthman Fund
Summer Internship Fund
 The Hoellen Family Foundation
General Program Support
 The Kainz Family Foundation
Environmental Programs
 Jocarino Fund
Environmental Programs
 McKinsey & Company
SUElebration
 Dr. Scholl Foundation
Environmental Programs
 The Warwick Foundation
Botany Fund

\$2,500 to \$4,999

Eastdil Realty
SUElebration
 Sonnenschein Nath & Rosenthal, LLP
SUElebration

Quarles & Brady, LLP
Educational Programs
 U.S. Bancorp Foundation
Educational Programs
 Wirtz Corporation
SUElebration

\$1,000 and below

Evanston North Shore Bird Club
Ornithologist's Research Fund
 Lizzadro Real Estate, LLC
SUElebration
 Mongerson Galleries
SUElebration
 Nicor Incorporated
SUElebration
 Navigant Consulting Inc.
SUElebration
 Prairie Woods Audubon Society
Ornithologist's Research Fund
 The Warranty Group
Educational Programs
SUElebration
 Wine Enthusiast Companies
Educational Programs

Corporate Relations Program**Corporate Leader \$35,000 and above**

Anonymous
 United Airlines

Corporate Explorer \$30,000 to \$34,999

ArcelorMittal USA
 Baxter International Inc.
 Bloomberg
 Midwest Generation
 Pepsi Beverages Company
 Trans Union LLC

Corporate Benefactor \$25,000 to \$29,999

Aon Corporation
 Kraft Foods
 Leo Burnett Worldwide
 McDonald's Corporation

Corporate Patron \$15,000 to \$24,999

Bank of America Foundation
 Charter One
 Northern Trust
 S&C Electric Company
 UBS Financial Services
 UnitedHealthcare
 W.W. Grainger, Inc.

Corporate Associate \$10,000 to \$14,999

Frontenac Company
 Hewitt Associates, LLC
 ITW Foundation
 JPMorgan Chase & Co.
 Marmon Group Incorporated
 MetLife
 Molex Incorporated
 Morgan Stanley
 Motorola, Inc.
 Navistar, Inc.

NYSE Euronext
 Sears Holdings Corporation
 The McGraw-Hill Companies

Corporate Friend \$5,000 to \$9,999

Akzo Nobel, Inc.
 American Heritage Protective Services
 Andrew Corporation
 Fellowes, Inc.
 GKN Foundation
 Goldman, Sachs & Co.
 Quarles & Brady, LLP
 Tru Vue-Optium Acrylic Products

Field Pass Program

American College of Surgeons
 Ball Horticultural Company
 ComPsych Corporation
 DeVry Inc.
 Edgewater Funds
 Institutional Capital Corporation
 Old Mountain Company
 QSR Inc
 Sahara Enterprises, Inc.

**UNRESTRICTED CORPORATE AND FOUNDATIONS****\$100,000 and above**

Chicago Cultural Mile Association
 The Chicago Community Trust
 John D. and Catherine T. MacArthur Foundation

\$25,000 to \$99,999

Julius N. Frankel Foundation
 The Buchanan Family Foundation

\$10,000 to \$24,999

John R. Halligan Charitable Fund
 Mayer & Morris Kaplan Family Foundation
 Shure Incorporated

\$1,000 to \$9,999

American Agricultural Insurance Company
 Amsted Industries Foundation
 The Braeside Foundation
 Patrick and Anna M. Cudahy Fund
 The Irving Harris Foundation
 McGraw Foundation
 Old Republic International Corporation
 The Sulzer Family Foundation
 Wellington Trust Co.
 Howard L. Willett Foundation, Inc.

THE WOMEN'S BOARD

The Women's Board is pleased to recognize the following contributors who gave \$500 or more to support its projects, including the Annual Gala, Children's Holiday Celebration, Outreach Luncheon and Annual Appeal. We additionally thank the sponsors of The Women's Board 2010 events. Please note, individual Field Dreams contributions are listed with Restricted Gifts on page 12.

\$100,000 and above

GRAFF

\$50,000 to \$99,999

Mr.* and Mrs. John A. Canning, Jr.
Mr.* and Mrs. Roger K. Deromedi

\$25,000 to \$49,999

Abbott
Aon Corporation
Bank of America
Howard B. Bernick Foundation*
The Boeing Company
Mr.* and Mrs. James S. Frank
Wilbur* and Linda Gantz
Christina and Ron* Gidwitz
Grosvenor Capital Management, LP
Mr. David D. Hiller* / McCormick Foundation
Illinois Tool Works Inc.
Mr.* and Mrs. Michael L. Keiser
The Negaunee Foundation*
Mr. and Mrs. William A. Osborn
J. B.* and MK Pritzker Family Foundation
Michael* and Diane Tang

\$12,000 to \$24,999

Alberto Culver Company / Carol Bernick
Allstate
Charter One
ComPsych Corporation
Janet* and Craig Duchossois
Mr.* and Mrs. Marshall Field
Harris Family Foundation / John and Stephanie Harris
Mr. David G. Herro*
JPMorgan Chase
Mr.* and Mrs. Richard L. Keyser
Mr. and Mrs. Peter G. Krivkovich
Mr. and Mrs. Alan J. Lacy
Robert M. and Diane von Schlegell* Levy
McDonald's Corporation
Mr.* and Mrs. Bobby Mehta
Northern Trust
The PrivateBank
Mr. and Mrs. J. Christopher Reyes
Mr. and Mrs. Patrick G. Ryan
Mr.* and Mrs. Alejandro Silva
UnitedHealthcare
Linda* and Ron Wolf

\$6,000 to \$11,999

AAR Corporation
Mr. and Mrs. Gary D. Ahlquist
Mr. and Mrs. Richard J. Almeida
ARAMARK Corporation

Ariel Investments
Mary Jo and Doug Basler
Mr. and Mrs. Philip S. Beck
Ms. Susan M. Benton* / Winston & Strawn LLP
Mr. and Mrs.* Philip D. Block III
BlueCross BlueShield of Illinois
Barbara^ and Roger Brown
Mrs. Joyce E. Chelberg
Mrs. Gary C. Comer
Mark and Connie Crane
Mr.* and Mrs. Robert W. Crawford, Jr.
Deloitte LLP
Mr. and Mrs. Byram E. Dickes
Mr.* and Mrs. Richard Elden
Ernst & Young LLP
Exelon Corporation
Mr. and Mrs. W. J. Farrell
Mr.* and Mrs. Michael W. Ferro, Jr.
Ms. Jamee C. Field* / The Edith B. and Lee V. Jacobs Fund No. 1
Grant Thornton LLP
Mr.* and Mrs. Jack M. Greenberg
Mr. and Mrs.* Rich Jernstedt

Mr. and Mrs.* Edward Byron Smith, Jr.
Tor Solberg / Solberg Manufacturing
Mr. and Mrs. Neele E. Stearns, Jr.
Mr. and Mrs. Thomas Tisbo
Mr. and Mrs. Bruce W. White
William Blair & Company
Mr.* and Mrs. W. Rockwell Wirtz

\$3,000 to \$5,999

Sue and Stephen Baird
Mr. and Mrs. James N. Bay, Jr.
Mr. and Mrs. Harrington Bischof
Mr. and Mrs. Andrew W. Brown
Lenore and Douglas Cameron
Chubb Group Insurance Companies
Ms. Patti Gerber
Mr. and Mrs. Thomas H. Hodges
Mrs. Robert C. Hyndman
Mr. and Mrs. W. Bruce Johnson
Mr. and Mrs. T. E. Kilcollin
Mr. and Mrs. Frederick A. Krehbiel
Mr. and Mrs. William S. Macdonald
McDermott, Will, and Emery



Mr. and Mrs.* Dennis J. Keller
Mr. and Mrs. Dennis Klaeser
Kroeschell Engineering Company
Randolph R. Kurtz* and Ms. Peggy Wehmeyer
Leo Burnett Worldwide
Locke Lord Bissell & Liddell LLP
Mr.*^ and Mrs. John W. McCarter, Jr.
McKinsey & Company
Clare Muñana*
MVC Capital / Jim* and Julie O'Connor
Nalco Company
Mr. and Mrs. John Doane Nichols
Mr.* and Mrs. Neil S. Novich
Mr. and Mrs. Jerry K. Pearlman
PNC Financial Services Group, Inc.
Tawani Foundation
Mr. and Mrs. Phillip B. Rooney
Lydia and Pat* Ryan / Ryan Enterprises Group
Sara Lee Foundation
Mr. and Mrs. Gordon I. Segal / Segal Family Foundation
Sidley Austin LLP

Ms. Liz Newell and Mr. Jack Kragie
Ms. Mary C. Niehaus
Ms. Lisa J. Reategui
Blasko Ristic and Lisa McClung Ristic
Mr. and Mrs. Jeffrey S. Ross
Ms. Cynthia M. Scalzo and Dr. Henry Brown
Mr. and Mrs. Richard H. Schnadig
Tave & Associates, LLC
John Vail
Van Cleef & Arpels
Kim and Miles* White

\$1,000 to \$2,999

Mr. and Mrs. John J. Ahearne
Alexander and Alexander Attorneys at Law*
Mrs.* T. Stanton Armour
Dr. and Mrs.* Robert A. Beatty
Mr.* and Mrs. Norman R. Bobins
John* and Jackie Bucksbaum
Nancy Burke and Tim Woods
Mr. and Mrs. Clark Burrus
Dr. and Mrs. Robert Wells Carton

Ms. Clarissa H. Chandler
 Mr. and Mrs. Peter W. Rogers
 Mr. and Mrs. John T. Cunningham
 Mr. and Mrs. John A. Daniels
 Mr. and Mrs. Robert J. Darnall
 Dr. and Mrs. Tapas K. Das Gupta
 Mr. and Mrs. Robert O. Delaney
 Mr. and Mrs. Thomas Denison
 Mr. and Mrs. David Devonshire
 Eric J. Dybal, M.D. FACS
 Mr. and Mrs. William Farley
 Mr. and Mrs. Alexander H. Faurot
 Ginny and Peter Foreman
 Peter B. and Donna B. Freeman
 Marshall B. Front Family Charitable Foundation
 / Laura De Ferrari and Marshall B.* Front
 Dr. and Mrs. John S. Garvin
 Ms. Nancy S. Gerrie and Mr. Richard W. Bowen
 Mr. and Mrs. Christopher O. Glass
 Ms. Tonja Rizai Hall
 Mr. and Mrs. King W. Harris
 Mr. and Mrs. Brent Hawkins
 Mr. and Mrs. Patrick J. Herbert III
 Mr. and Mrs. John W. Higgins
 Mr. and Mrs. Harlow N. Higinbotham
 Mr. and Mrs. C. Clarkson Hine
 Mr. and Mrs. John L. Hines
 Mr. and Mrs. James M. Johnson
 Ms. Pamela M. MacVicar Johnson
 Mrs. Noel Kaplan
 Mr. and Mrs. Byron C. Karzas
 Mr. and Mrs. William O. Kasten



Mr. and Mrs. Daniel P. Kearney
 Mr. and Mrs. Donald G. Kempf, Jr.
 Mr. and Mrs. John J. Kinsella
 Mr. and Mrs. Adam Klauber
 Mr. and Mrs. Richard R. Kracum
 Mr. and Mrs. Joseph F. Lizzadro, Jr.
 Mr. and Mrs. Julian Mack
 Peter and Dorothy Mackevich Marks
 Mr.* and Mrs. Scott P. Marks, Jr.
 Mr. and Mrs. Robert May
 Mr. and Mrs. Frank D. Mayer, Jr.
 Mr. and Mrs. Andrew J. McKenna, Sr.

Mrs. Withrow W. Meeker
 Mr. and Mrs. Raymond M. Mota
 Ronald Mund and D. M. Studler
 Mr. Gary L. Neilson and Ms. Trudy A. Havens
 Mr.* and Mrs. James J. O'Connor, Jr.
 Mrs. China I. Oughton
 Mr. and Mrs. Rodger Owen
 Mrs. Marlene W. Phillips
 Mr. Michael P. Polsky
 Mr. and Mrs. Charles S. Potter, Jr.
 Mr. and Mrs. Jeffrey A. Rein
 Kenneth H. and Linda B. Robin Fund
 Mr. Richard N. Ryan
 Mr. and Mrs. Steven M. Ryan
 Mr. and Mrs. Stephen Schmitt
 Mr. and Mrs. Jeffrey S. Sharp
 Bob and Charlene Shaw
 Mr. and Mrs. Neil Sheehan
 Pam and Tom Sheffield / JS Charitable Trust
 Mr. and Mrs. Michael S. Sigal
 Ms. Peggy Snorf
 Mr. and Mrs. Charles H. Solberg, Jr.
 Mr. and Mrs. James C. Spain
 Barbara and David* Speer
 Mr. and Mrs. Harvey J. Struthers, Jr.
 Mr. and Mrs. James E. Taich
 Mr. and Mrs. John W. Taylor III
 Mr. and Mrs. Richard L. Thomas
 Mr. and Mrs. Robert W. Thomas
 Mr. and Mrs. John E. Van Horn
 Mr. and Mrs. John R. Walter
 Mrs. Hempstead Washburne
 Mr. and Mrs. Henry P. Wheeler
 Ms. Nancy Hamill Winter
 Carole Wood and Carl Jenkins
 Mr.* and Mrs. Blaine J. Yarrington
 Mr. and Mrs. Robert Zentner

\$500 to \$999

Mrs. Keene H. Addington II
 Mr. and Mrs. Stanley N. Allan
 Mrs. Marilyn Alsdorf
 Mr. and Mrs. Paul A. Bodine
 Willard L.* and Susan K. Boyd
 Mr. and Mrs. Cameron Brown
 Mr. John P. Ver Bockel and
 Ms. Kathleen E. Carbonara
 Mrs. Robert Adams Carr
 Mr.* and Mrs. Worley H. Clark, Jr.
 The Colmar Foundation
 Mrs. and Mr. Jennifer S. Corrigan
 Ms. Patricia O. Cox
 The Donnelley Foundation
 Mr. and Mrs. Francis G. Foster, Jr.
 Mr. and Mrs. Cyrus F. Freidheim, Jr.
 Mr. and Mrs. Maurice F. Fulton
 Mr. Robert B. Graham
 Mr.* and Mrs. Judson C. Green
 Mr. and Mrs. David C. Hawley
 Wayne E.* and Colette J. Hedien
 Lynn and Philip Hummer
 Mr. and Mrs. Edward R. James
 Mr. and Mrs. Hersch Klaff
 Mr. and Mrs. Donald Koenig
 Dr. and Mrs. Michael S. Lewis
 Ms. Christine Long
 Mr. and Mrs. Richard P. Mayer

Dr. William B. McDonald and
 Ptah Sekhmet Udjahorresnet Ptahhotp
 Ms. Elisabeth C. Meeker
 Dr. and Mrs. Charles F. Nadler
 Dr. Stephanie Ortel
 Ms. Martha A. Peterson
 Mr. and Mrs. Neil K. Quinn
 Mr. and Mrs. Edward M. Roob
 Mr. and Mrs. Andrew M. Rosenfield
 Mr. and Mrs. Richard J. L. Senior
 Mr. and Mrs. John A. Stepan
 Mr. and Mrs. James A. Tuchler
 USG Corporation
 Mr. and Mrs. Carson Veach

THE WOMEN'S BOARD ANNUAL APPEAL

The Women's Board thanks the following contributors for their annual support.

Mrs. Keene H. Addington II
 Mrs. Gary D. Ahlquist
 Mrs. Stanley N. Allan
 Mrs. Richard J. Almeida
 Mrs. Marilyn Alsdorf
 Mrs. T. Stanton Armour*
 Sue Merritt Baird
 Mrs. James N. Bay, Jr.
 Mrs. Robert A. Beatty*
 Mrs. Philip S. Beck
 Mrs. David R. Bibbs
 Mrs. Harrington Bischof
 Mrs. Richard B. Black
 Mrs. Bowen Blair
 Mrs. Norman L. Blankenship
 Mrs. Philip D. Block III*
 Mrs. Edwin R. Blomquist
 Mrs. Norman R. Bobins
 Mrs. Paul A. Bodine
 Mrs. John J. Borland, Jr.
 Susan K. Boyd
 Mrs. K. Dane Brooksher
 Mrs. Roger O. Brown^
 Gail Feiger Brown
 Mrs. Cameron Brown
 Mrs. Clark Burrus
 Mrs. Michael Busch
 Lenore Cameron
 Rita J. Canning
 Kathleen E. Carbonara
 Mrs. Robert Adams Carr
 Mrs. Hammond Chaffetz
 Mrs. Michael Chung
 Mrs. Worley H. Clark, Jr.
 Elizabeth R. O'Connor Cole
 Mrs. Rosecrain Collins
 Mrs. Roosevelt D. Collins
 Mrs. Gary C. Comer
 Mrs. James R. Coulter
 Mrs. Mark Crane
 Mrs. John V. Crowe
 Mrs. Sandra K. Crown
 Mrs. Dino J. D'Angelo
 Mrs. John A. Daniels
 Mrs. Robert J. Darnall



Mrs. Howard M. Dean, Jr.
 Mrs. Robert O. Delaney
 Mrs. Thomas Denison
 Mrs. Charles Dennehy
 Mrs. Roger K. Deromedi
 Mrs. David Devonshire
 Mrs. Byram E. Dickes
 Mrs. John M. Dixon
 Barbi Donnelley
 Mrs. W. Gregory Doolin
 Janet Duchossois*
 Mrs. Josephine F. Elting
 Mrs. Thomas J. Eyerman
 Mrs. William Farley
 Mrs. W. James Farrell
 Mrs. Alexander H. Faurot
 Mrs. Robert Feitler
 Mrs. Michael W. Ferro, Jr.
 Mrs. Marshall Field
 Amy S. Findlay
 Ginny Foreman
 Mrs. Francis G. Foster, Jr.
 Mrs. Earl J. Frederick
 Mrs. Cyrus F. Freidheim, Jr.
 Laura De Ferrari Front
 Mrs. William D. Frost
 Mrs. Maurice F. Fulton
 Mrs. Gary E. Gardner
 Mrs. John S. Garvin
 Mrs. Isak V. Gerson
 Mrs. Christopher O. Glass
 Mrs. Julian R. Goldsmith
 Karen Z. Gray
 Mrs. Judson C. Green
 Stephanie Crane Guyett
 Ms. Tonja Rizai Hall
 Mrs. King W. Harris
 Mrs. David C. Hawley
 Mrs. Duncan C. Healy
 Colette Johnston Hedien
 Jean Baldwin-Herbert
 Mrs. John W. Higgins
 Mrs. Harlow N. Higinbotham
 Mrs. C. Clarkson Hine
 Mrs. Edward M. Hines

Mrs. John L. Hines
 Mrs. Thomas H. Hodges
 Janet Connor Holabird
 Barbara C. Howell
 Mrs. Roger B. Hull
 Mrs. Philip W. Hummer
 Mrs. Robert C. Hyndman
 Sue Barnett Ish
 Mrs. Rich Jernstedt *
 Kathryn G. Johnson
 Pamela M. Johnson
 Mrs. Byron C. Karzas
 Mrs. William O. Kasten
 Anne Kavanagh
 Mrs. Dennis J. Keller*
 Mrs. T. Eric Kilcollin
 Mrs. John J. Kinsella
 Mrs. William T. Kirk, Jr.
 Mrs. Dennis Klaeser
 Mrs. Adam Klauber
 Mrs. Robert D. Kolar
 Laura Kracum
 Linda J. Krivkovich
 Donna La Pietra
 Mrs. Alan J. Lacy
 Mrs. Michael S. Lewis
 Mrs. William S. Macdonald
 Amy M. Mack
 Mrs. John W. Madigan
 Dorothy Mackevich Marks
 Mrs. Scott P. Marks, Jr.
 Mrs. Richard P. Mayer
 Mrs. Frank D. Mayer, Jr.
 Mrs. John W. McCarter, Jr.
 Mrs. George Barr McCutcheon II
 Mrs. Andrew J. McKenna, Sr.
 Elisabeth C. Meeker
 Mrs. Withrow W. Meeker
 Mrs. Hugo J. Melvoin
 Mrs. Newton N. Minow
 Mrs. Raymond M. Mota
 Mrs. Aidan I. Mullett
 Mrs. Charles F. Nadler
 Mrs. Earl L. Neal
 Mrs. Ray E. Newton

Mrs. John D. Nichols
 Ms. Mary C. Niehaus
 Mrs. Neil S. Novich
 Mrs. James J. O'Connor, Sr.
 Julie Hughes O'Connor
 Mrs. Paul W. Oliver, Jr.
 Dr. Stephanie Ortel
 Cathleen M. Osborn
 Mrs. James Otis, Jr.
 Mrs. China I. Oughton
 Mrs. Donald W. Patterson
 Mrs. O. Macrae Patterson
 Mrs. Jerry K. Pearlman
 Martha A. Peterson
 Mrs. Marlene Welsh Phillips
 Mrs. Richard J. Pigott
 Barbara E. Pinder
 Mrs. Charles S. Potter
 Mrs. Charles S. Potter, Jr.
 Mrs. Albert E. Pyott
 Mrs. Clyde W. Reighard
 Susan L. Rein
 Mrs. J. Christopher Reyes
 Lisa McClung Ristic
 Wendy Chronister Rogers
 Mrs. Edward M. Roob
 Mrs. Phillip B. Rooney
 Mrs. Jeffrey S. Ross
 Mrs. Patrick G. Ryan
 Cindy Scalzo
 Mrs. Richard H. Schnadig
 Mrs. Gordon I. Segal
 Mrs. Richard J. L. Senior
 Mrs. Thomas C. Sheffield, Jr.
 Mrs. Michael S. Sigal
 Mrs. Edward Byron Smith, Jr.*
 Peggy Snorf
 Mrs. Charles H. Solberg, Jr.
 Mrs. Barbara A. Speer
 Mrs. Harlan F. Stanley
 Bonnie E. Stearns
 Mrs. John A. Stepan
 Nancy A. Stevenson
 Mrs. Harvey J. Struthers, Jr.
 Mrs. Edward F. Swift III
 Mrs. Hampden M. Swift
 Sarah Taich
 Tawani Foundation
 Mrs. John W. Taylor III
 Mrs. Richard L. Thomas
 Mrs. Robert W. Thomas
 Jacqueline M. Tilton
 Mrs. Stephen B. Timbers
 Jeannie O'Connor Tisbo
 Mrs. James A. Tuchler
 Mrs. John E. Van Horn
 Mrs. Theodore W. Van Zelst
 Mrs. John R. Walter
 Mrs. Hempstead Washburne
 Mrs. Henry P. Wheeler
 Kim White
 Mrs. Julian B. Wilkins
 Mrs. Robert H. Wilson
 Nancy Hamill Winter
 Carole Wood
 Mrs. Blaine J. Yarrington

COMMEMORATIVE GIFTS

Contributions in the name of a friend, loved one or colleague made between January 1, 2010 and December 31, 2010.

In Honor Of

Betsy Ahearn
Mr. Ben Horne
 Joseph Cablk - in honor of his volunteer service
Integrus Energy Group, Inc.
 Kathleen Gantz and Alissa Shulkin
Ms. Mari Philipsborn and Mr. Eric W. Terman
 Dr. Lance Grande
Mr. Gregory Cameron
 Karen Kent
Mr. and Mrs. Evan Kent
 Joyce Matuszewich
Ms. Anne Smeltzer
 Dr. Charles Nadler
Ms. Sarita Warshawsky
 Col. (IL) James N. Pritzker, Ret.
Albert B. & Audrey G. Ratner Family Foundation
 Connie and Chuck Winkler
Ms. Rebecca Banner

In Memory Of

Roger B. Burckert
Mr. James F. Burckert
 Allan S. Diamond
Mrs. Ruth B. Berns
Mr. and Mrs. Ben D. Schenker

Bernice Gardner
African Community of Chicago Temple Inc.
Mrs. Gloria K. Berkwits
Mr. and Mrs. Kenneth Fischl
Mr. Michael Johnson
Mr. Dennis J. Kinzig
Mr. and Mrs. John Lewis, Jr.
Ms. Marita Maxey
Ms. Richell L. Mintzloff
Ms. Yvonne Shields
Mr. and Mrs. Tom Sholeen
Mr. and Mrs. Gary Spencer
Mrs. Jacqueline M. Spillman
Mr. and Mrs. Wilton Stone

Robert Gowland
Ms. Patricia A. Gowland
Mr. and Mrs. Richard Guzik

Barbara Hsu
Ms. Kelly H. Richter

Diane Josd
Mr. Roger Reason and Ms. Nancy Bent

Lisa Knight-Dybal
Mr. and Mrs. Mark F. Knight

Judith Knittle
Ms. Linda J. Swanson

John Fredric Kurfess
Mr. E. J. Hansman

Frank J. Mooney
Mrs. Frank J. Mooney

John Nelson
Mr. and Mrs. Joseph M. Cablk
Ms. Bernice Jacobs
Mr. and Mrs. Raymond Johnson
Mr. David Kalensky and Ms. Maureen Gallagher
Mr. Dennis J. Kinzig
Andrea Luke
Ms. Marita Maxey
Ms. Richell L. Mintzloff
Mr. and Mrs. John B. Nelson
Mr. and Mrs. Charles A. Remsberg
Mr. and Mrs. William J. Sherry
Mr. and Mrs. Tom Sholeen
Mr. and Mrs. Gary Spencer
Mr. and Mrs. Wilton Stone
Mr. and Mrs. Duane E. Stout
Ms. Grace Takata
Mr. and Mrs. John F. Vicha
Mr. and Mrs. Joseph Walters
Mr. and Mrs. Jack Weisman

Molly Ozaki
Ms. Toshiko Doi and Mr. Paul Doi
Ms. Sharon Ehrhardt
Mr. Jay Halfpenny
Ms. Jean M. Mishima
Ms. Roberta J. Modaff
Ms. Carolyn A. Quinn
Ms. Meagan Quinn
Mr. and Mrs. Ben D. Schenker

Dr. Patricio Ponce de Leon
Ms. Maria Hogan

Dorothy Roder
Ms. Jennifer Lukas

Dr. Thomas William Shields
Mrs. Ann T. Shields

Alphanette White Price
Ms. Annica MacDonald

EDWARD AYER SOCIETY

The Edward Ayer Society recognizes the individuals whose charitable gift planning ensures a bright future for The Field Museum.

Anonymous (6)
 Barbara and Steven Adelman
 Marilyn Alsdorf
 Mary Jane Arnam
 Mr. Harry Axelrod
 Mr. and Mrs. James H. Banach
 Mr. Thomas F. Beauvais
 Dr. Helen R. Beiser
 Robert and Ruth Berns
 Mr. George W. Blossom III
 Mr.* and Mrs. Willard L. Boyd
 Mrs. George Brumlink

Leo R. Buckert
 Judith A. Caloud
 Mrs. Robert Adams Carr
 Mr.* and Mrs. Henry T. Chandler
 Mr. and Mrs. Worley H. Clark, Jr.
 Mr. and Mrs. Stephen F. Condren
 Mr.* and Mrs. Frank W. Considine
 Ms. Rebecca Davidson
 Mr. and Mrs. Philip L. Engel
 Mr. Richard F. Eveleth
 Mr. and Mrs. Fabio Fabbri
 Mary and Bruce Feay
 Mr.* Marshall Field
 Dr. and Mrs. Curtis B. Frank
 Wilbur* and Linda Gantz
 Mr. and Mrs. William E. Gardner
 Mr. Lyle Gillman
 Mrs. Warren L. Gjorup
 Rebecca Gray Smith and David L. Smith†
 Dr. Norman C. Greenberg and
 Dr. Gilda M. Greenberg
 Timothy and Joyce Greening
 Mr.* and Mrs. Lewis S. Gruber
 Ms. Tonja Rizai Hall
 Mr. Corwith Hamill
 Ms. Jeanne M. Hansen
 Dr. Malcolm H. Hast and Dr. Adele Hast
 Mr. and Mrs. David C. Hess
 Mr. and Mrs. John L. Hines
 Mrs. Harold H. Hines, Jr.
 Peggy L. Hoberg
 Ms. Melody Hobson*
 Anita W. Hornbrook
 Dr. and Mrs. James C. Hunt
 Ms. Tan Fui Lian^ and Dr. Robert F. Inger^
 Mr. Edward Jerkey
 Ms. Stacy L. Johnson
 Constance T. Keller*
 Mr. and Mrs. Jerry M. Kelly
 Dr. Robert E. Lewis
 Gail J. and Robert B.* Loveman
 Mr. and Mrs. Bernard A. Mack, Jr.
 Ann C. Mallow
 Mr. Peter A. Maren
 Mr. Robert C. Marks
 Dr. William B. McDonald and Ptah Sekhmet
 Udjahorresnet Ptahhotp
 Mr.* and Mrs. Hugo J. Melvoin
 Sandra L. Mueller
 Drs. James and Sandra Napolitan
 Mr. and Mrs. John P. Nielsen
 Irma Parker
 Ms. Marie E. Peruscini and
 Mr. Edward C. Bapple
 Mr.* and Mrs. Richard J. Pigott
 Mrs. John W. Pocock
 Mrs. Alfred Lunt Putnam
 Dr. Dominick S. Renga
 Mr. Alan Resetar^ and Mrs. Donna Resetar
 Mr. Richard F. Reynolds
 Mrs. Sheila T. Reynolds
 Ms. Anita J. Rogers
 Mr. and Mrs. Benjamin Rooks
 Mrs. Gerda Schild
 Mr. and Mrs. David L. Schlotterback
 Mr. Franklin R. Schmidt
 Patricia O. Schnadig

Ms. Thelma L. Schwartz
 Mr. and Mrs. G. Curtiss Shaffer
 Mrs. Daniel Shaw
 Louise M. Sherman
 Rose L. Shure
 Miss Joanne Silver
 Adele Simmons *
 Ms. Suzette Sodini
 Mr. and Mrs. John R. Stanek
 Ms. Judith B. Sugarman
 Mr. Gerald M. Torrence
 David Wargowski
 Mrs. Joan Webster
 Mrs. Roderick S. Webster
 Mr. Nestor R. Weigand, Jr.
 Mrs. Barbara H. West
 Mrs. Dorothy B. White
 Ms. Virginia L. Whittaker
 Ms. Claudia L. Winkler
 Mr. Charles H. Wilson
 Mr. James G. Young
 Mr. and Mrs. William B. Zigterman
 Ms. Christine C. Zogus

ESTATE GIFTS AND BEQUESTS

We are most thankful for the support of the following estate gifts made during 2010.

Estate of Nara Cadorin
 Estate of Vivian E. Conner
 Estate of Frank B. Foster
 Estate of Evelyn Frank
 Estate of Barbara J. Green
 Estate of Agnes Kemp
 Estate of Nancy S. Mix
 Estate of Jay O'Brien
 Estate of Harvey Perlman
 Estate of Sarah Perlman
 Estate of David Rose
 Estate of Ella G. Studer
 Estate of Jane B. and Chester D. Tripp
 Estate of Alice F. Tryon
 Estate of Nancy L. Wald
 Estate of Lydia Walkowiak

MATCHING GIFTS AND GRANTS

Abbott
 Aetna Inc.-Matching Gifts Program
 Allstate
 American International Group, Inc.
 Ameriprise Financial Gift Matching Program
 Aon Corporation
 AT&T Inc.
 Automatic Data Processing
 Bank of America
 Baxter International Inc.
 The Boeing Company
 BP America, Inc.
 Helen V. Brach Foundation
 The Capital Group Companies, Inc.
 Caterpillar Foundation
 The Chicago Community Trust
 CNA Insurance
 Coca-Cola Enterprises Inc.

The Community Foundation, Inc.
 Deutsche Bank
 Eli Lilly and Company Foundation
 The Field Foundation of Illinois, Inc.
 Fitch Ratings
 Follett Corporation
 GE Commercial Finance
 Goldman, Sachs & Co.
 W.W. Grainger, Inc.
 Harris Bank
 Hasbro, Inc.
 HSBC - North America
 IBM Corporation
 Integrys Energy Group, Inc.
 ITW Foundation
 John D. and Catherine T. MacArthur Foundation
 The Joyce Foundation
 JPMorgan Chase Foundation
 Kirkland & Ellis Foundation
 Leo Burnett Worldwide
 McCormick Foundation
 McDonald's Corporation
 William G. McGowan Charitable Fund, Inc.
 Meredith Corporation
 Merrill Lynch & Co. Foundation, Inc.
 Microsoft Matching Gifts Program
 Morgan Stanley Matching Gift Program
 Motorola, Inc.
 Northern Trust
 PepsiCo, Inc.
 The Pfizer Foundation, Inc.
 Polk Bros. Foundation
 Robert Bosch Tool Company
 Rockwell Collins Matching Gift Program
 The Siragusa Foundation
 Takeda Pharmaceuticals North America, Inc.
 Tellabs Incorporated
 United Airlines
 Verizon Communications Inc.
 Western Union Foundation

IN-KIND CONTRIBUTIONS

BBJ Linens
 Bright Start College Savings Program
 Chicago Park District
 Chocolate Shoppe Ice Cream
 Corner Bakery
 Mr. and Mrs. Joel S. Dryer
 The Field Museum Women's Board

GRAFF
 Halls Rental Services, Inc.
 Hammond Beeby Rupert Ainge Architects Incorporated
 Kraft Foods
 Long Grove Confectionery
 McDonald's - Carmen De Carrier Owner / Operator
 NetJets Inc.
 Dr. and Mrs. Tu Manh Nguyen
 Oracle Education Foundation
 Patagonia Enterprises
 The Ruskin Group
 Sears Holdings Corporation
 United Airlines
 Walgreens
 Waterford Press
 Wells Street Popcorn
 Winston & Strawn LLP
 Zorch

DONATED COLLECTIONS

Anthropology

Fagan O'Kane Baldwin
 Mr. and Mrs. Joel S. Dryer
 William S. Goldman
 Abraham Hoffer
 Terry McGuire
 Withrow W. Meeker
 Helen W. Samuels
 Anne. P. Underhill
 Abdoulaye Wade, President of Senegal
 Cynthia S. Weill

Botany

Arizona State University
 J. Battaglia
 Botanical Museum, Lund, Sweden
 Brigham Young University
 California Academy of Sciences
 M. O. Dillon
 Duke University
 Eszterházy Károly College, Hungary
 L. Glacy
 Hiroshima University, Japan
 Instituto de Botânica, Sao Paulo, Brazil
 Instituto de Ecología, A.C., Xalapa, Mexico
 Jardim Botânico do Rio de Janeiro, Brazil
 Karl Franzens Universität Graz, Austria
 R. Lücking



Maharakham University, Thailand
 Missouri Botanical Garden
 L. E. Mora O.
 Museo Nacional de Historia Natural,
 Santiago, Chile
 Muséum National d'Histoire Naturelle,
 Paris, France
 National Botanical Institute, Pretoria,
 South Africa
 Nationaal Herbarium Nederland, Leiden
 University, Netherlands
 National Science Museum, Tsukuba, Japan
 New York Botanical Garden
 Purdue University
 Royal Botanic Gardens, Kew, United Kingdom
 R. M. Schuster
 Shandong Normal University, Jinan, China
 Smithsonian Institution
 K.A. Swagel
 Tasmanian Museum & Art Gallery
 Universidad Complutense, Madrid, Spain
 Universidade Federal de Mato Grosso
 do Sul, Brazil
 Université de Liège, Belgium
 University of Alabama
 University of Helsinki, Finland
 University of Texas at Austin
 University of Utah
 University of Wisconsin
 J. Van De Veire

Geology / Physical Geology

Terry Boudreaux
 Mohamud Esmail
 Michael Farmer
 Bao Tu Nguyen
 Anh Tu Nguyen
 Thuy Nguyen

Geology / Fossil Invertebrates

Lance Grande

Geology / Fossil Vertebrates

Scott Wolter
 James A. Tynsky

Geology / Paleobotany

James E. Day
 Rob Coleman
 Jack Wittry

Zoology / Amphibians and Reptiles

Thomas G. Anton
 Thomas Beauvais
 Joy Bower, Gibson Woods Nature Center
 Gary S. Casper
 Forest Preserve District of Du Page County
 Lawrence R. Heaney, Field Museum-Division
 of Mammals
 Robert Inger (books)
 Lincoln Park Zoo
 James Louderman, Field Museum-Division
 of Insects
 Alan Resetar
 Mary Anne Rogers
 William T. Stanley
 Bryan L. Stuart



Harold Voris

Zoology / Birds

Dorothy Adams
 Daniela Amendola
 Valerie Andria
 Mike Angic
 Jeff Armstrong
 Wilma Asis-McNelis
 John Bates
 Andrea Baumgartner
 Anne Beall
 Cathy Benson
 Lauren Benson
 Alicia Biewer
 Judy Biewer
 Natasha Bloch
 Susan Boehme
 Jill Bohannon
 Dan Brinkmeier
 Barbara Brown
 Joan Bruchman
 Nick Calingaert
 Lynne Carpenter
 Walter Carrington
 Kevin Carroll
 Pat Carson
 Suzanne Checchia
 Chicago Bird Collision Monitors
 Chicago Botanic Gardens
 Anna Clissold
 D. Cohen
 John D'Asto
 Luke Dahlberg
 Angela Daidone
 Sidnei Dantas
 Wendell Davis
 Jennifer Dombeck
 Kelly Dougherty
 Beth DuPont
 Glenna Eaves
 Miles Ebell
 Josh Engel
 Erik Erickson
 Marty Farrington
 C. Feller
 Dianne Fieri
 Flint Creek Wildlife Rescue
 Glenn Gabanski
 Margaret Gawronski
 Beth Genet
 Susan Germaine

Paul Gitau
 Ian Glasspool
 Ingrid Gould
 Cindy Gray
 Suzanne Hackbarth
 Michael Hanson
 Chris Hartman
 Mary Hennen
 Erin Hennessy
 Megan Hennessy
 Melissa Hilton
 M. Hirsch
 Miranda Hofelt
 L. Holland
 Janice Humphrey
 David Johnson
 Jessica Johnson
 Lin Johnston
 John Kaiser
 Josephine Kajawa
 Samantha Kajawa
 Pam Karson
 Fanny Kassel
 James Kauss
 A. Kazdale
 Dawn Keller
 John Kelly
 Sean Kendall
 Larry Krutulis
 Robin Lacey
 Christine Lalli
 H. Lee
 Albert Legzdins
 Walter Levernier
 E.L. London
 Mary Loye
 Cynde Lubecke
 Holly Lutz
 Peggy Macnamara
 Gaetano Marangelli
 K. Marzani
 Danielle Marvit
 June Matayoshi
 Paul Mayer
 Sean McBride
 Donna McCluskey
 Mira McCombe
 Mary Lou Mellon
 Jennifer Michaud
 Brandi Miles
 Minnesota Department of Natural Resources
 Nancy Mores
 Bob Morgan
 Matt Morrow
 Sheldon Moyle
 Laura Muraoka
 Terry Murray
 Jennifer Murtoff
 Trish May
 Lora Nickels
 Andria Niedzielski
 Brendan O'Handley
 Roger Palmer
 C. Patrick
 Bernadette Payne
 Janet Pellegrini
 Jay Peplinski



Marie Perez
 Dorothy Pesch
 Michael Peters
 R. Peterson
 John Phelps
 Annie Pike
 Scott Plant
 Marina Post
 W. Post
 Annette Prince
 Rebekah Pritchitt
 Leon Provencher
 Jennifer Raber
 Teri Radke
 A. Rawley
 Sushma Reddy
 Greg Redenius
 Cathy Ricciardi
 Bernie Richter
 Brad Roback
 Gerri Rode
 A. Roelle
 Anne Ruesche
 Bob Rusk
 Lauren Russ
 J. Russea
 Jill Russell
 R. Sanders
 M. Sanford
 Save Our American Raptors
 Mike Scelfo
 Alma Schrage
 Miles Shafkin
 Barbara Shaw
 Barbara Smirl
 Dawn Smith
 N. Softin
 Allison Spangenberg
 David Stagman
 J. F. Steffen
 Anastasia Steinbrunner
 S. Stiffler
 Jill Stites
 James Stolla
 Douglas Stotz
 Bill Strausberger
 Adam Strauss
 Celia Strauss
 Kalman Strauss
 Jan Sutkus

Darrin Swagel
 Kevin Swagel
 Flora Swearingen
 Betty Sweetland
 Elliott Swenkenson
 Barb Sydow
 Linda Tartof
 Anna Tendero
 Christine Thomas
 James Tibensky
 Mike Trinchitella
 Suzanne Turner
 Sandra Van Tilberg
 Chris Van Wassenhove
 Victoria Velinski
 A. Vesselinovitch
 Anita Victorin
 J. Von Bergen
 Sarah Von Fremd
 Tyana Wachter
 Shana Walsh
 Stephanie Ware
 Elizabeth Wenscott
 Christer Wiklander
 Tracy Wierman
 David Willard
 Teri Williams
 Chris Williamson
 Jolyn Willink
 Millie Willis
 Willowbrook Wildlife Center
 Dale Woltman
 Sandra Woltman

Zoology / Fishes

Richard A. Phillips, British Antarctic Survey
 Philip W. Willink
 Ted Wulfers
 Larry C. Peyton

Zoology / Insects

Sinan Anlas
 Michael Brattain
 Fernandez Castiblanco
 François Catzeffis
 Giulio Cuccodoro
 Claude Daniel
 Peter Decker
 Pat Franzen
 Francisco Garcia

Vasily Grebennikov
 Nicole Gunter
 Larry Heaney
 Matthias Helb
 Richard Hoffman
 David H. Kistner
 Jörn Köhler
 Jarmila Kukulova-Peck
 György Makranczy
 Paul Marek
 David Matusik
 Bruce Patterson
 Stewart Peck
 Annette Scanlon
 William Shear
 Craig Stihler
 Margaret Thayer
 Pavel Stoev
 John Wagner
 Thomas Wesener

Zoology / Invertebrates

Thomas G. Anton
 Lyle Campbell
 Gary S. Casper
 Jeffrey C. Drazen
 Field Museum Archaeological Expedition to
 New Guinea 1996
 Stacy Galleher
 Daniel L. Graf
 Jozef Grego
 Frank Köhler
 Museum & Art Gallery of the Northern Territory
 Museum of Comparative Zoology, Harvard
 University
 The Natural History Museum, London, UK
 Chiara Romano
 Petra Sierwald
 John K. Tucker
 John D. Zardus

Zoology / Mammals

Dan Brinkmeier
 Chicago Zoological Society
 Brandon Kilbourne
 MJS Richards
 Minnesota Dept. of Natural Resources
 Mike Reed, Bay Beach Wildlife Sanctuary
 Willowbrook Wildlife Center



STAFF CONTRIBUTIONS

Arielle C. Adams
 Elizabeth P. Anderson
 Kasandra L. Astor
 Elizabeth C. Babcock
 Jerice Barrios
 Deborah A. Bekken
 Rita L. Bellouze
 Laura Biddle-Clarke
 Rüdiger Bieler
 Joseph B. Brennan
 Sheila M. Cawley
 Michelle Clayton
 Jim W. Croft
 Patricia K. DeCoster
 Caitlyn L. Driehorst
 Ellyn Duncan-Nugent
 Kristine B. Easton
 Nel Fetherling
 Christine D. Giannoni
 Ian J. Glasspool
 Lance Grande
 Amy E. Harmon
 Carol I. Hastings
 Lawrence R. Heaney
 Melissa Hilton
 Martina S. Hough
 Christina L. Hoyt
 Sharon Kushiner
 Nicholas J. Lang
 Cheryl L. Livengood
 Melissa Mayer
 John W. McCarter
 Heather L. Metz
 Holly S. Morgan
 Sara K. Murphy
 Lora Nickels
 Caroline Parsons
 Susan I. Phillips
 Anita L. Purnell
 Roger W. Reichard
 Alan Resetar
 Clara L. Richardson
 Robert Bosch Tool Company
 Andrea M. Robertson
 Laurel M. Ross
 Laura Sadler
 Susan Schoen
 Petra Sierwald
 Laurie B. Squire
 Douglas F. Stotz

Margaret K. Thayer
 Shawn K. VanDerziel
 Matthew J. von Konrat
 Tatzyana S. Wachter
 Emily J. Waldren
 Nanette Watson
 Jeri L. Webb
 Robert Weiglein
 David E. Willard
 Aimee G. Willetts
 Megan Williams Beckert
 Darnell Williams
 Naomi J. Willink
 Karen L. Wilson
 Genevieve S. Zigterman

VOLUNTEER LEADERSHIP

The Women's Board Executive Committee

Fran Beatty*
President

Jacky Ferro
Vice President

Caron A. Lacy
Vice President

Elisabeth Meeker
Secretary

Ann Collins
Treasurer

Virginia Bobins
Member at Large

Amy B. Tuchler
Member at Large

Janice Beck
Field Dreams Co-Chair

Constance Bischof
Field Trips Chair

Judith S. Block*
Nominating Chair

Lenore Cameron
Hospitality Co-Chair

Sandy Deromedi
Gold Gala Co-Chair
Programs Co-Chair

Susan Faurot
Outreach Luncheon Co-Chair

Jeani Jernstedt
Long Range Planning Chair

Kathryn Johnson
Trips Co-Chair

Kathleen Klaeser
Gold Gala Co-Chair

Kelli S. Klauber
Children's Holiday Celebration Chair

Lenore Macdonald
Annual Appeal Chair

Pam Marks
By-Laws Chair

Judy Newton
Hospitality Co-Chair

Ellen O'Connor
Museum Relations Chair

Cathy Osborn
Field Dreams Co-Chair

Barbara Pinder
Website Chair

Julia Potter
Outreach Luncheon Co-Chair

Betsy B. Rosenfield
Board Luncheons Co-Chair

Carole B. Segal
Women in Science Fellowship Chair



Bonnie E. Stearns
Board Luncheons Co-Chair

Sarah Taich
Trips Co-Chair

Sandra Thomas
Membership Chair

Kim White
Programs Co-Chair

FOUNDERS' COUNCIL STEERING COMMITTEE

Robert B. Loveman*
Chair

John and Jane Chapman
Dr. Eric J. Dybal
Peter and Donna Freeman
Dr. Stephen C. Gieser
Mrs. Noel Kaplan
Mr. and Mrs. T. Eric Kilcollin
Gail J. Loveman
Elisabeth C. Meeker
Lanny Passaro
Patricia and Richard Schnadig
Liz Sharp
Priscilla A. and Douglas H. Walter

Council on Africa

David M. Tolmie*
Chair

Pam Conant
Marian F. Cook
Christie A. and William B. Denniston, Jr.
Mary and Bruce Feay
James L. Foght
Susan M. Forney
Morris Goodman
Judy Johanson
Connie* and Dennis Keller
Mr. and Mrs. Bruce H. Lauer
Deborah and Daniel Manoogian
Nancy A. McDaniel
Irene D. Pritzker

ANTHROPOLOGY ALLIANCE STEERING COMMITTEE

Judith K. Lavender*
Chair

Joshua E. Chernoff °
Phyllis W. Ellis
Kathleen Hayman
Yolande Lucas
Lenore Macdonald
Susan Mikalauski
John K. Notz, Jr.
Robert E. Shaw
Pamela Sheffield
Susan Stein
James O. Stola
Carl F. Wolf

° Standing
Committee Chair



PRESIDENT'S LEADERSHIP COUNCIL EXECUTIVE COMMITTEE

Laura Ferris Anderson*
Executive Chair

John E. McGovern III
Vice-Chair

Jennifer Fales
Membership Committee Co-Chair

John Mangel III
Programs Committee Co-Chair

Heidi Mayer
Programs Committee Co-Chair

John F. Podjasek III
Membership Committee Co-Chair

Kevin P. Stineman
Board Resources Committee Co-Chair

P. Errett Van Nice
Board Resources Committee Co-Chair

FIELD ASSOCIATES STEERING COMMITTEE

Jill Hutchison
President

Elizabeth Cox
Programs Co-Chair

Sarah Lichtenstein
Communications Chair

Brian Kruse
Programs Co-Chair

Natalie Rubino
Membership Chair

CHAIRMAN'S CIRCLE

Anonymous (7)
Mr. and Mrs.* James D. Abrams
Mr. and Mrs. Ralph Alvarez
Mr.* and Mrs. Anthony K. Anderson
Mr. Thomas H. Bailey
Mr. and Mrs. Frank L. Bauer
Howard B. Bernick Foundation*
Mr.* and Mrs. Norman R. Bobins
Barbara* and Roger Brown†
Mr.* and Mrs. John A. Canning, Jr.
Mr.* and Mrs. Gregory C. Case
Mr. and Mrs. Henry T. Chandler
The Negaunee Foundation*
Mr.* and Mrs. Robert W. Crawford, Jr.
Ms. Elizabeth Crown and Mr. William Wallace
Mr.* and Mrs. Roger K. Deromedi

Mr. Richard H. Driehaus
Janet* and Craig Duchossois
Mr.* and Mrs. Richard Elden
Philip Enquist and Joanna Karatzas
Mr.* and Mrs. Michael W. Ferro, Jr.
Ms. Jamee C. Field*/The Edith B. and Lee V. Jacobs Fund No. 1
Mr.* and Mrs. Marshall Field
Ms. Janice Fields and Mr. Douglas Wilkins
Mr.* and Mrs. James S. Frank
Mr.* and Mrs. J. Erik Fyrwald
Wilbur* and Linda Gantz
Christina and Ron* Gidwitz
Ms. Sue Ling Gin*
Mr.* and Mrs. Lewis S. Gruber
Wayne E.* and Colette J. Hedien
Mr. David G. Herro*
Mr. David D. Hiller*
Mrs. Harold H. Hines, Jr.
Pamela K. and Roger B. Hull
Mr.* and Mrs. Michael L. Keiser
Mr. and Mrs.* Dennis J. Keller
Mr.* and Mrs. Richard L. Keyser
Randolph R. Kurtz*
Robert M. and Diane von Schlegell* Levy
Mr.* and Mrs. John W. McCarter, Jr.
Mr.* and Mrs. Bobby Mehta
Clare Muñana
Mr.* and Mrs. Neil S. Novich
Mr. Michael P. Polsky
Peter* and Alicia Pond
J. B.* and MK Pritzker Family Foundation
Thomas and Cecelia Ricketts
John W.* and Jeanne M. Rowe
Mr.* and Mrs. Michael J. Sacks
Mr.* and Ms. Louis L. Schorsch
Mr. and Mrs.* Michael D. Searle
Mr.* and Mrs. Alejandro Silva
Michael* and Diane Tang
Mr.* and Mrs. David M. Tolmie
Kim and Miles* White
Mr.* and Mrs. W. Rockwell Wirtz

FOUNDERS' COUNCIL - CONSERVATOR

Anonymous (3)
Mr. and Mrs. Nolan H. Baird, Jr.
Mr.* and Mrs. Tom Bernardin
Mr. and Mrs.* Philip D. Block III
John* and Jackie Bucksbaum
Carol and Tom Butler
Mr. and Mrs. Theodore R. Butz / Butz Family Foundation
Mr. Stanton R. Cook*
Mrs. Ruth Dunbar Davee
Ms. Shirley M. Evans
Ginny and Peter Foreman
Marshall B. Front Family Charitable Foundation / Laura De Ferrari and Marshall B.* Front
Mr.* and Mrs. Antonio J. Gracias
Mr.* and Mrs. Judson C. Green
Mr.* and Mrs. Jack M. Greenberg
Mr. and Mrs. William E. Greffin
Mr. David Alan Helfand* and Ms. Leslie N. Bluhm

Ms. Melody Hobson*
 Dr. and Mrs. Wayne J. Holman III
 Mrs. Shirley R. Jahn
 Mr. Herbert Fisk Johnson
 Mrs. Noel Kaplan
 Ms. Nancy W. Knowles
 Laurie and Rich Kracum
 Ms. Elizabeth Amy Liebman
 Mr. and Mrs. Barry L. MacLean
 Mr. and Mrs. Keith Malott Kizziah
 Mr.* and Mrs. W. James McNeerney, Jr.
 Mrs. Withrow W. Meeker
 Mr.* and Mrs. Hugo J. Melvoin
 Mr. Hymen T. Milgrom
 Mr. Richard M. Morrow
 Cathy and Bill Osborn
 Mr. and Mrs. Gordon S. Prussian
 Mrs. William L. Searle
 Mr. and Mrs.* Edward Byron Smith, Jr.
 Barbara and David* Speer
 Mr. and Mrs. Theodore D. Tieken, Jr.
 Glenn* and Jacqueline Tilton
 Mr.* and Mrs. Joseph V. Tripodi
 Mrs. Herbert A. Vance
 Mr. Kelly R. Welsh* and Ms. Ellen S. Alberding
 Mr. and Mrs. Brian B. Whalen
 Linda* and Ron Wolf

FOUNDERS' COUNCIL - COLLECTOR

Dr. and Mrs. Robert Wells Carton
 Mr. Richard A. Ditton
 Harris Family Foundation
 Mr. Robert B.* and Mrs. Gail J. Loveman
 Ms. Liz Newell and Mr. Jack Kragie
 Mrs. Ann S. Wolff

FOUNDERS' COUNCIL - SURVEYOR

Anonymous (3)
 Alexander and Alexander Attorneys at Law*
 Mr. Harry Axelrod
 Mr. E. M. Bakwin
 Mrs. Barbara Beré
 Dr. and Mrs. Norman L. Blankenship
 Mr. Kent Chandler, Jr./The Buchanan
 Family Foundation
 Mr. and Mrs. John S. Chapman
 Mrs. Joyce E. Chelberg
 Mr.* and Mrs. Worley H. Clark, Jr.
 Mary and Jim Costello
 Mr. Jim W. Croft^ and Mrs. Marilyn
 Martinson Croft
 Dr. and Mrs. Tapas K. Das Gupta
 Mr. and Mrs. Robert O. Delaney, Jr.
 Mr. and Mrs. James M. Denny / John G. Searle
 Family Trust
 Ms. Janet W. Diederichs
 Eric J. Dybal, M.D. FACS
 Mr. and Mrs. Samuel H. Ellis
 Mr. and Mrs. James H. Ferry III
 Mr. Andrew J. Filipowski and Mrs. Melissa Oliver
 Mr.* and Mrs. David W. Fox, Jr.
 General Packaging Products

Ms. Abigail B. Gerry / The Edith B. and Lee V.
 Jacobs Fund No. 3
 Mr. and Mrs. Camillo Ghiron
 Ellen and Paul Gignilliat
 Mr. and Mrs. James J. Glasser
 Richard and Mary L. Gray
 Mr. and Mrs. Paul G. Haaga, Jr.
 Mr. and Mrs. William J. Hagenah III
 Mr. and Mrs. Burton W. Hales, Jr.
 Mrs. D. Foster Harland
 Mr. and Mrs. Thomas H. Hodges
 Mr. and Mrs. J. Thomas Hurvis
 Mr. William C. Kunkler* and
 Ms. Susan M. Crown
 Mr. and Mrs. Bruce H. Lauer
 Mr. Richard J. Loewenthal, Jr.
 Mr. and Mrs. Benjamin C. Madey
 Cary J.* and Lisa Klimley Malkin



FOUNDERS' COUNCIL - MEMBER

Anonymous (3)
 Mrs. Lee Winfield Alberts
 Mrs. John W. Allyn/The Allyn Foundation, Inc.
 Mr. and Mrs. Richard J. Almeida
 Lynn Donaldson and Cameron Avery
 Sue and Stephen Baird
 Mr. and Mrs. James H. Bankard
 Mr. and Mrs. John W. Barr
 Warren and Eloise Batts
 Mr. Richard G. Kron and
 Ms. Deborah A. Bekken^
 Mr.* and Mrs. Charles W. Benton
 Ms. Susan M. Benton*
 Mr. and Mrs. David W. Bernauer
 Mr. and Mrs. Richard G. Berns

Mr.* and Mrs. Scott P. Marks, Jr.
 Mr. Andrew H. Mathis
 Mr. and Mrs. Michael A. Miles
 Mrs. China I. Oughton
 Mr. and Mrs. Charles W. Palmer
 Irma Parker
 Lanny and Terry Passaro
 Ms. Aurie A. Pennick*
 Mr. and Mrs. John W. Puth
 Mr. and Mrs. George A. Ranney, Jr.
 Mr. and Mrs. Andrew M. Rosenfield
 Mr. and Mrs. Robert J. Sanborn
 Ms. Karla Scherer
 Mr. and Mrs. Thomas J. Schnitzer
 Fred and Sue Schulte
 Segal Family Foundation
 Mr. Roger D. Shaw, Jr.
 Adele S. Simmons* and John L. Simmons
 Mr. and Mrs. Walter S. Snodell III
 Tawani Foundation
 Mr. and Mrs. Robert A. Taylor
 Mr. Howard J. Trienens
 Mr. and Mrs. Robert J. Wagner
 Barbara H. West
 John and Mary Willis Foundation
 Goldie Wolfe Miller and Jack Miller
 Mr.* and Mrs. Blaine J. Yarrington

Mr. and Mrs. Andrew K. Block
 Nancy and George H. Bodeen
 Mr. and Mrs. John J. Borland, Jr.
 Robert and Laura Boyd
 Mr. and Mrs. Richard S. Brennan
 Rosemarie and Dean Buntrock
 Mr. and Mrs. Wiley N. Caldwell
 Mr. and Mrs. Peter R. Carney
 Joan and Tom Castino
 Sheila Cawley^ and Stephen Kahnert
 Mrs. Hammond Chaffetz
 Mrs. Alice B. Childs
 Kenneth and Linda Ciriacks
 Mr. and Mrs. James J. Conrad
 Mark and Connie Crane
 Mr. and Mrs. William A. Crane
 Mr. and Mrs. Thomas M. Cushing
 Mrs. Carla M. Dehmloew
 Owen Deutsch and Rona Talcott
 Mr. and Mrs. Byram E. Dicks
 Mr. Thomas R. Doler
 Mr.* and Mrs. Thomas E. Donnelley II
 Mrs. Jerome L. Ettelson
 Mrs. Juila B. Faust
 Mr. Harve A. Ferrill
 Sonia and Bill Florian
 Enivar Charitable Fund
 Donna and Peter Freeman

Mr. and Mrs. Cyrus F. Freidheim, Jr.
 Mr. and Mrs. John E. Freund[†]
 Joanne Benazzi Friedland
 Mr. and Mrs. Timothy D. Friedman
 Mr. and Mrs. Phillip M. Friedmann
 Virginia and Gary Gerst
 Ms. Donna J. Godel and Mr. Roger E. Godel
 Mr. and Mrs. Richard C. Godfrey
 Mrs. Delta A. Greene
 Timothy and Joyce Greening
 Mrs. Paul W. Guenzel[†]
 Dr. Jonathan Haas[^] and Dr. Winifred Creamer[^]
 Mr. Adnaan Hamid and Mrs. Elissa Efroymsen
 Mr. Alton B. Harris and Ms. Andrea S. Kramer
 Mr. and Mrs. David P. Harris
 Mr. Matthew Harris
 Mr. and Mrs. Dean M. Harrison
 Dr. Malcolm H. Hast and Dr. Adele Hast
 Barry* and Carol Hastings
 Beverly and Warren Hayford
 Mr. and Mrs. Thomas Z. Hayward, Jr.
 Mr. and Mrs. Patrick J. Herbert III
 Mr. and Mrs. David C. Hess
 Mr. and Mrs. John L. Hines
 Ms. Peggy Hoberg
 Doris* and Marshall Holleb
 Mr. and Mrs. Arthur Holzheimer
 Mr. and Mrs. Lawrence V. Howe, Jr.
 Dr. Maria R. Hrycelak
 Mr. Robert S. Ingersoll+
 Ms. Pamela M. MacVicar Johnson
 Mr. and Mrs. Sheldon E. Kent
 Mr. and Mrs. T. Eric Kilcollin
 Lynne King Roberts
 Mr. and Mrs. Robert E. King
 Mr. and Mrs. William J. Kirby
 Mr. and Mrs. John E. Kirkpatrick
 Mr. and Mrs. Jeffrey D. Korzenik
 Dr. Robert A. Kubicka and Dr. Claire Smith
 Harold and Judith* Lavender
 The Lefkofsky Family Foundation
 Mr. and Mrs. Elliot Lehman
 Ronna Lerner and Joel Horowitz
 Ms. Renée Logan
 Mr. J. David Lynn
 Dr. Douglas R. MacAyeal
 Mr. and Mrs. Timothy J. Malloy

Sandy and Jerry Manne
 Ms. Marie A. Marotta
 Mr. and Mrs. Arthur C. Martinez
 Mrs. Donna J. Matson and
 Mr. Robert W. Carpenter
 Ms. Diedre McBreen
 Mr. and Mrs. E. Jerome McCarthy
 Mr. and Mrs. Archibald McClure
 Dr. William B. McDonald and Ptah Sekhmet
 Udjahorresnet Ptahhotp
 Patty and Mark McGrath
 Dr. Kennon P. McKee
 Jane and Bruce McLagan
 Mr. and Mrs. Charles P. McQuaid
 Erma S. Medgyesy
 Ms. Elisabeth C. Meeker
 Susan Mikalauski
 Mr. and Mrs. Raymond M. Mota
 Mr. Robert Moyer and Ms. Anita Nagler
 Mr.* and Mrs. Leo F. Mullin
 Ms. Christine M. Myers
 Mr. and Mrs. Werner E. Neuman
 Mr. Arthur C. Nielsen, Jr.
 Mrs. Mary Jane Nordlund
 Mr.* and Mrs. James J. O'Connor, Sr.
 Mrs. Virginia O'Neill
 Ms. Donna L. Owens
 Mr. and Mrs. Edward Pasquesi
 Carl and Barbara Plochman
 Mrs. Charles S. Potter
 Mr. and Mrs. Philip J. Purcell III
 James A. Radtke and Susan A. Kressin
 Mr. and Mrs. Michael G. Rahal
 Ms. Dellyn Raimondi
 Mr. and Mrs. Rudolph S. Rasin
 Mr. and Mrs. John Shedd Reed
 Mr. Richard F. Reynolds
 Mr.* and Mrs. Larry D. Richman
 Roberts Family Foundation
 Mr. and Mrs. John W. Robinson, Sr.
 Mr. and Mrs. Robert Rotering
 Mr. and Mrs. Norman J. Rubash
 Dr. and Mrs. Myron E. Rubnitz
 Mr. and Mrs. Paul A. Rubschlager
 John and Shirley Schlossman
 Mr. and Mrs. F. Eugene Schmitt
 Mr. and Mrs. Richard H. Schnadig



Mr. and Mrs. Allan P. Scholl
 Mr. and Mrs. Peter M. Schwab
 Mr. and Mrs. Richard J. L. Senior
 Mr. and Mrs. Stephen H. Sentoff
 Mr. and Mrs. Jeffrey S. Sharp
 Bob and Charlene Shaw
 Mr. and Mrs. Neil Sheehan
 Pam and Tom Sheffield / JS Charitable Trust
 Mrs. Ann T. Shields
 Dr. Neil H. Shubin and Ms. Michele Seidl
 Rose L. Shure
 Mr. and Mrs. Romolo Sidoli
 Mrs. Dolores Silverman
 Mr. and Mrs. Scott C. Smith
 Toni Sandor Smith
 Mr. and Mrs. John B. Snyder
 Mr. and Mrs. Peter J. Solomon
 Ms. Erich Sommer
 Mr. and Mrs. Jeffrey Sommer
 Mr. and Mrs. Scott E. Sommer
 Mrs. Ida N. Sondheimer
 Ms. Heather T. Sparling
 Mr. and Mrs. Gerald A. Spore
 Mrs. Susan Stein
 Ms. Lisbeth C. Stiffel
 Mr. Kevin L. Stoeckel and
 Mrs. Emily Heisley Stoeckel
 Mr. and Mrs. Roger W. Stone
 Harvey and Mary Struthers
 Mr. and Mrs. Robert D. Stuart, Jr.
 Mr. Arthur T. Susman
 Mr. and Mrs. Robert Szalay
 Mr. and Mrs. Ronald A. Testa
 Mr. and Mrs. Ed Thayer
 Mr. and Mrs. Richard L. Thomas
 Mr. and Mrs. Stuart B. Townsend
 Mr. and Mrs. Douglas H. Walter
 Mr. Everett S. Ward* and Ms. Iris Sims
 Mrs. Sarita Warshawsky
 Mrs. Hempstead Washburne
 Professors Johannes and Julia R. Weertman
 Mrs. J. Howard Wood+
 Mr. and Mrs. Edward Yastrow
 Dr. and Mrs. Gerald D. Young
 Mr. and Mrs. Robert P. Zabel, Sr.
 Mr. and Mrs. Robert Zentner
 Mark H. Zornow, M.D.



FIELD EXPLORERS

Anonymous (2)

Mr. and Mrs. A. Robert Abboud
 Mary and Mike Abroe
 Paul and Mary Anderson
 Mr. and Mrs. Paul Anest
 Mr. and Mrs. Edward M. Apke
 Mr. and Mrs. William T. Bartholomay
 Mr. Clyde E. Bassett, Jr.
 Mr. Henry G. Bates, Jr.
 Dr. Verna L. Baughman
 Mr. and Mrs. John Bazley
 Mr. and Mrs. Donald A. Belgrad
 Mr. and Mrs. Robert L. Berner, Jr.
 Ms. Lisa K. Bibb
 Mr. George W. Blossom III
 Mr. and Mrs. Laurence O. Booth
 Willard L.* and Susan K. Boyd
 Mr. Clay Brock
 Mr. John P. Bryan
 Samuel and Beth Buchsbaum
 Mr. and Mrs. Howard E. Buhse, Jr.
 Mr. and Mrs. Allan E. Bulley, Jr.
 Mr. and Mrs. John D. Burns II



Mr. and Mrs. Rhett W. Butler /
 Butler Family Foundation
 Thomas and Dianne Campbell
 Mrs. and Mr. Marybeth Canfield
 Mr. and Mrs. James J. Cannella
 Mr. and Mrs. Gregory P. Casimer
 Mrs. Silas S. Cathcart
 Mr. Franklin A. Cole
 Mr. and Mrs. John C. Colman
 Mr. James W. Compton*
 Froilan and Cecilia Concepcion
 Mr. and Mrs. E. David Coolidge, III
 Mr. and Mrs. Larry A. Cooper
 Ms. Christine Courtneage
 Ms. Diana L. DeBoy
 Mr. and Mrs. Thomas Delahunty
 Mr. Eugene H. Deutsch
 Ms. Ann C. Diener
 Dr. Richard A. Domanik and
 Dr. Janice Y. Domanik

Dr. Naomi S. Donnelley
 Mrs. Glenda W. Duncan
 Mrs. Lowell B. Dwinell
 Mr. and Mrs. Timothy Earle
 Mr. and Mrs. Philip L. Engel
 The Donald Ephraim Family Foundation
 Mary and Bruce Feay
 Dr. Fred G. Freitag and Ms. Lynn N. Stegner
 Mr. and Mrs. Joel M. Friedman
 Mrs. Robert E. Gallagher
 Mrs. Mary S. Gallagher
 Mr. and Mrs. Howard Garoon
 Brent and Catherine Gledhill
 Mr. and Ms. Stanford J. Goldblatt
 Mr. John C. Goodall, Jr.
 Mr. and Mrs. John A. Goodman
 Mr. and Mrs. Carson G. Greene
 Mr. and Mrs. M. Hill Hammock
 Mr. E. J. Hansman
 Mr. and Mrs. David S. Harrington
 Mrs. Stephanie C. Harris / The Edith B. and
 Lee V. Jacobs Fund No. 2
 Mr. and Mrs. Raymond V. Hartman
 Janet and Bob Helman
 Dr. and Mrs. Leo M. Henikoff
 Ms. Cynthia S. Heusing and
 Mr. David H. Kistenbroker
 Melissa Hilton^ and Jonathan Perman
 Mr. and Mrs. Charles F. Hofbauer
 Mr. and Mrs. Richard M. Holm
 Mrs. Nancy A. Horner
 Mr. and Mrs. Michael Huchel
 Mr. and Mrs. Seth Hufstедler
 Mr. Steve Hufstедler and Ms. Patricia Wheeler
 Tex and Susan Hull
 Dr. and Mrs. James D. Hurst
 Mr. Lawrence L. Johnson
 Mr.* and Mrs. Richard M. Jones
 Linda M. Jung
 Mr. and Mrs. Arthur L. Kelly
 Mrs. Janet I. Kelly
 Mr. and Mrs. Jerry M. Kelly
 Mr. John A. Kolden
 Mr. and Mrs. Patrick Layng
 Ms. Cathy G. Lazaroff
 Mr. and Mrs. Michael P. Leahy
 Mr. Sheldon L. Leibowitz
 Ms. Deirdre LeMire
 Bonita and Bob Levin
 Mrs. Robert R. Lipsky
 Mrs. Laura Litten and Mr. Andre Leduc
 Mr. and Mrs. Louis L. Lizzadro
 Amy & Steve Louis Foundation
 The Lusk Family
 Charlene and Gary MacDougall
 Mr. and Mrs. Bernard A. Mack, Jr.
 Mr. and Mrs. Martin Mandles
 John C. and Victoria Martin Myers
 Ms. Michelle L. Maton and
 Mr. Michael C. Schaeffer
 Mr. and Mrs. Ronald McKee
 Ms. Anne L. Metcalf
 Mr. and Mrs. Horst J. Metz
 Mr. and Mrs. Robert R. Moeller
 Mr. and Mrs. Carl E. Moore, Jr.
 Mr. and Mrs. David Moore
 Ms. Mary K. Moreland and Mr. Daniel T. Jenks

Mrs. Mary Lou Morelli
 Mr. and Mrs. Lester Munson, Jr.
 Luvie and Scott Myers
 Mr. and Mrs. Madhavan K. Nayar
 Mr. and Mrs. Kenneth Nebenzahl
 Mr. and Mrs. John P. Nielsen
 Ms. Christina J. Norton and Mr. John A. Biek
 Mr.* and Mrs. James J. O'Connor, Jr.
 Jim and Diane Otis
 Ms. Sarah R. Packard
 Mr. and Mrs. William B. Pearce
 Mr. and Mrs. Robert P. Perkaus, Jr.
 Mr. and Mrs. Robert L. Pierce
 Nancy and Warren Rasmussen
 Mr. Alan Resetar^ and Mrs. Donna Resetar
 Mrs. Sheila T. Reynolds
 Mr. and Mrs. James C. Ringenoldus
 Mr. and Mrs. Brad Rosenberg
 Mr. and Mrs. Richard M. Rosenberg
 Mr. and Mrs. Harold Rosenson
 Mr. and Mrs. Edward W. Ross
 Ms. Linda Roterig
 Mr. and Mrs. Thomas D. Rutherford
 Ms. Maria Beatriz Sabater
 Robert E. and Cynthia M. Sargent
 Ms. Rebecca R. Schanberg and
 Mr. Jack R. Polsky
 Ms. Kathleen Schillo
 Ms. Barbara M. Schleck and Mr. Gary M. Ropski
 Ms. Carol H. Schneider
 Frank and Karen Schneider
 Dr. Bruce D. Schreider and Ms. Sandra Berger
 Mr. and Mrs. Peter D. Scully
 Mr. and Mrs. Irving Seaman, Jr.
 Dr. Penny B. Sebring and Mr. Charles A. Lewis
 Mr. and Mrs. Madison A. Self
 Mr. and Mrs. David Sensibar
 Mr. and Mrs. John T. Shutack
 Mr. Matthew J. Sideman
 Mr. Andrew T. Sinclair and Ms. Kathy Fisher
 Mrs. Victoria M. Skala
 Dr. James L. Smith
 Ms. Elizabeth L. Snyder
 Dr. and Mrs. Zachary N. Soiya
 Joachim and June Staackmann
 Mr. and Mrs. Ivan G. Strauss
 Mr. James Strieber and Ms. Trudy Nio
 Ms. Judith B. Sugarman
 Mr. and Mrs. Blake H. Swift
 Mr. and Mrs. R. Michael Tanner
 Mr. Robert Thomas
 Jim and Carol Tichy
 Dr. Michael M. Todd
 Mr. and Mrs. John P. Tubutis
 Mr. Jeffrey A. Urbina and Ms. Gaye Lynn Hill
 Mr. and Mrs. David J. Vitale
 Ms. Jeri L. Webb^
 Mr. and Mrs. Robert G. Weiss
 Ms. Jean A. White and Ms. Helene Beisecker
 Mr.* and Mrs. William J. White
 Mr. and Mrs. Paul R. Wiggin
 Mr. David E. Willard^
 Mr. Darnell Williams^
 Ms. Claudia L. Winkler
 Mr. Lawrence J. and Mrs. Margaret V. Witry
 Mr. Theodore M. Wynnchenko and
 Ms. Laura Hill

FIELD NATURALISTS

Anonymous (2)

Mr. and Mrs. John Aalbrechtse
 Mr. Henry W. Adams
 Barbara and Steven Adelman
 Dr. and Mrs. Dominic J. Allocco
 Mr. Charles E. Anderson
 Mr. and Mrs. Darrel J. Anderson
 Mr. and Mrs. S. Frank Arado, Jr.
 Mr. Richard Assmus and Ms. Leah Welty
 Mr. Rodney Austin
 Mr. and Mrs. Robert H. Bacon, Jr.
 Richard Bail and Janice Bail
 Mr. and Mrs. Peter Barclay
 Tom Barkalow and Patricia Lougheed
 Ms. Charlene Barringer and Mr. Tony Calcaterra
 Mr. and Mrs. Douglas D. Baum
 Ms. Nancy J. Beaumont
 Mr. and Mrs. Edward M. Becht
 Ms. Ann Bentzen-Bilkvist
 Laura Biddle-Clarke^
 Mr. Thomas R. Bland
 Mr. and Mrs. John C. Blomgren
 Mrs. Florence H. Boone
 Mr. and Mrs. Mark G. Boulanger
 Mr. Peter Bowe
 Mr. Keith D. Bowersox
 Mr. Richard T. Brannegan
 Mr. and Mrs. Robert B. Breisblatt
 Mr. Joseph B. Brennan^
 Mr. and Mrs. Michael Bresolin
 Mr. John A. Bross, Jr.
 Mr. and Mrs. Steven L. Brown
 Mr. and Mrs. William M. Brown
 Mr. and Mrs. Jackson Brunsting
 Mr. and Mrs. Edward Buker
 Mr. and Mrs. Randolph Burt
 Mr. and Mrs. Stephen J. Carlotti
 Mr. and Mrs. Walter R. Carlson
 Ms. June M. Chenelle
 Mr. and Mrs. Michael T. Clune
 Mr. and Mrs. David S. Cohen
 Mr. Louis J. Cohn and Mrs. Patricia Kroness
 Mr. John T. Coletta
 Mr. William D. Cox, Jr.
 Mr. Guy R. Crane
 Mr. Robert Crossley
 Mr. and Mrs. Bruce Crown
 Mr. Justin Daab and Ms. Lois Morrison
 Mr. William R. Darman and Ms. Maria Mau
 Mr. George M. Daugherty
 Melissa and Oscar David
 Ms. Rebecca Davidson
 Mr. and Mrs. Allen R. Davies
 Mr. and Mrs. Mark D. Dawson
 Mr. and Mrs. William W. Dean
 Mr. David A. Dempsey
 Mr. and Mrs. John H. Dick
 Mr. and Mrs. Blair C. Dickinson
 Dr. and Mrs. John R. Dimar
 Mr. and Mrs. James S. DiMatteo
 Ms. Ilana Z. Dobrin
 Dr. Julie A. Dodds and Dr. William G. Humphrey
 Mr. and Mrs. David W. Dodson
 Mr. John R. Dooley
 Mr. and Mrs. Timothy A. Dugan

Ms. Helen M. Dunlap
 Mark and Kitty Egan
 Ms. Linda L. Egebrecht
 Mr. and Mrs. Fabio Fabbri
 Mr. and Mrs. Eugene F. Fama
 Mr. and Mrs. John F. Faulhaber
 Mr. and Mrs. Raymond R. Fessler
 Mr. Luis A. Fierro
 Mr. and Mrs. Gregory Fieser
 Mr. Edward T. Fishwick and Ms. Mary M. Case
 Mr. Nicholas Fitz
 Mr. and Mrs. Henry Fragnoli
 Mrs. Arthur A. Frank, Jr.
 Mr. and Mrs. Henry S. Frank
 Mr. and Mrs. William J. Friend
 Mr. and Mrs. Maurice F. Fulton
 Mr. and Mrs. J. Patrick Gallagher, Jr.
 Mrs. Mary K. Gasser
 Mrs. Mary Jane Gibbs and Mr. Thomas Gibbs
 Mr. Ben Gierl and Ms. Karla Hayter
 Mr. John D. Goerner
 Mr. and Mrs. James P. Gorter
 Ms. Patricia A. Gowland
 Mrs. Rebecca Gray Smith
 Mr. and Mrs. Burt Green
 Mrs. George Price Grieve
 Ms. Ann Griffith Ash
 Mr. and Mrs. John V. Guida
 Mr. and Mrs. Charles C. Haffner III
 Mrs. William M. Hales
 Ms. Elizabeth W. Halpern
 Dolores K. Hanna
 Dr. and Mrs. Donald Harden
 Ms. Alice E. Harper
 Ms. Patricia A. Harper
 Ms. Katherine P. Harris and Mr. Robert S. Jendra
 Mrs. Augustin S. Hart, Jr.
 Ms. Anne C. Haskel
 Mr. and Mrs. Thomas S. Hebda
 Ms. Joyce E. Heidemann
 Dr. and Mrs. Marvin K. Henry
 Mr. and Mrs. Scott E. Hertenstein
 Mr. and Mrs. Daniel P. Hidding
 Mr. Thomas Hilgart and Ms. Shirley Kitzmann
 Mr. Stuart L. Hirschman and
 Ms. Melinda K. Arbaugh
 Ms. Alice M. Hoffman

Mr. and Mrs. Richard C. Hoffman
 Mr. and Mrs. B. Peter Hofmann
 Mr. and Mrs. William S. Hoppe
 Mrs. Diane S. Humphrey
 Mr. and Mrs. G. Cleveland Hunt, Jr.
 Ms. Patricia J. Hurley
 Mrs. Lorraine M. Hurt and
 Mr. George M. Ingram
 Mr. Joseph Ingino and Ms. Martha Arroyo
 Mr. Matthew Isoda
 Ms. Donna L. Itrich
 Mr. and Mrs. William C. Jackson
 Mr. and Mrs. Andrew M. Jarosz
 Ms. Deborah Johnson and Ms. Angela Nesci
 Mr.† and Mrs. Samuel C. Johnson II
 Mr. and Mrs. George T. Jones, Jr.
 Mr. and Mrs. Paul R. Judy
 Ms. Loretta Kahn and Mr. Doug Bank
 Mr. Michael Kalway
 Mrs. Katharine J. Kelly
 Mr. and Mrs. Eric Kennedy
 Mr. and Mrs. Paul Kepes
 Mr. and Mrs. Thomas L. Kittle-Kamp
 Ms. Cheryl B. Kobetsky
 Mrs. Alberta Kosik
 Mr. and Mrs. Martin J. Kozak
 Ms. Jennifer L. Kraft
 Mr. Paul R. Kressin and Ms. Kay Lee
 Mr. and Mrs. Elliott H. Krieter
 Mr. and Mrs. Peter C. Krupp
 Katherine Kurtz and Raburn Howland
 Mr. William T. W. Kwan
 Mr. and Mrs. John R. La Montagne
 Mr. and Mrs. James Lancaster
 Dr. Richard L. Landau
 Mrs. Winfred M. Leaf
 Ms. Leslie A. Lee
 Ms. Carolyn S. Levin
 Mr. Robert J. Lueders
 Ms. Judith Macior
 Mr. and Mrs. Craig A. Mackrides
 Mr. and Mrs. C. Patrick MacLeod
 Mr. and Mrs. Jeffery V. Mallow
 Ms. Charlene Marcus
 Ms. Jamie C. Marshall
 Ms. Carmen Maso
 Mr. William D. Mason and Ms. Diana Davis



Mr. and Mrs. James McClelland
 Bess Catherine McCord and James McCord
 Mr. and Mrs. John A. McKenna
 Mr. Ian McNish
 Dr. Steven A. Melnyk
 Ms. Courtney Mentzer
 Mr. and Mrs. Robert C. Merrick
 Mr. and Mrs. Charles F. Meyer
 Mr. and Mrs. Michael E. Mikolajczyk
 David and Sue Milligan
 Mr. Ralph V. Miner
 Mrs. B. A. A. Mohr
 Mr. Robert V. Monfort
 Dr. Anthony G. Montag and
 Dr. Katherine L. Griem
 Mr. and Mrs. Carl E. Moore
 Mr. and Mrs. John A. Morris
 Mr. and Mrs. Anton Motz
 Ms. Helga E. Muench
 Mrs. Joyce C. Mutz
 Ms. Mary Nalbandian
 Mr. Jim H. Niehoff and Mrs. Jolie R. Macier
 Mr. and Mrs. Ed Nienow
 Mrs. Phoebe Nixon
 Mr. and Mrs. Dele Ogunleye
 Mr. and Mrs. Charles J. Osicka
 Mrs. Barbara Parson
 Mr. and Mrs. James B. Patton
 Mrs. Margaret M. Pendry
 Mr. and Mrs. Michael Perlman
 Mr. S. J. Perlow and Ms. Sandra J. Allen
 Mr. and Mrs. R. Douglas Petrie
 Mr. and Mrs. Burt Pickard-Richardson
 Mr. John Pincetti
 Ms. Nancy E. Plax and Mr. Steven Schwartzman
 Mrs. John W. Pocock
 Mr. and Mrs. John F. Podjasek III
 Mr. and Mrs. Keith Powell
 Mrs. Mary F. Quednau
 Mr. and Mrs. John R. Berry II
 Mrs. Carolyn F. Rademacher
 Dr. Timothy W. Raykovich and Ms. Donna Vega
 Mr. Richard W. Richardson
 Ms. Maureen Riordan
 Mr. and Mrs. Stephen L. Ritchie
 Mr. and Mrs. Kevin Robbins
 Mr. and Mrs. Donald E. Rocap
 Ms. Janice E. Rodgers
 Ms. Anita J. Rogers
 Mr. and Mrs. Howard J. Romanek
 Ms. Elaine G. Rosen
 Mr. and Mrs. Harry B. Rosenberg
 Mr. Gerson M. Rosenthal
 Mrs. Doris D. Roskin and Ms. Leah Roskin
 Mrs. Donald I. Roth
 Ms. Rachel Ryan
 Jessica and Steve Sarowitz
 Mr. and Mrs. Morton O. Schapiro
 Mr. and Mrs. John E. Scheub
 Mrs. Lawrence K. Schnadig
 Dr. and Mrs. Edward M. Schrey
 Mr. and Mrs. Bernard C. Schubert
 Mr. and Mrs. Thomas J. Schultz
 Ms. Thelma L. Schwartz
 Mrs. Marilyn L. Schweitzer and
 Mr. Michael A. Firman
 Ms. Denise Selz

Mr. and Mrs. G. Curtiss Shaffer
 Mr. and Mrs. Jonathan Shaver
 Mr. and Mrs. David J. Sheldor
 Mr. and Mrs. Christian Silge
 Mr. Richard M. Skolly and Dr. Kate A. Feinstein
 Mr. and Mrs. Daniel E. Smith
 Ms. Sharon Smith
 Mr. and Mrs. Robert W. Smolen
 Mr. and Mrs. Dan W. Snyder, Jr.
 Mr. Tom Sourlis
 Ms. Faith H. Spencer and Mr. Mark Parts
 Mr. Victor Spitzer
 Mr. and Mrs. John R. Stanek
 Mr. Alfred E. Steinhaus
 Mr. and Mrs. Harry C. Steinmeyer
 Mr. and Mrs. John A. Stepan
 Mr. and Mrs. Phillip L. Stern
 Mr. and Mrs. Russ M. Strobel
 Mr. and Mrs. Bert O. Sullivan, Jr.
 Mr. and Mrs. Timothy Sullivan
 Mr. and Mrs. David W. Swartz
 Mr. and Mrs. John S. Swift III
 Dr. and Mrs. Joseph W. Szokol
 Ms. Nina Tai
 Ms. Anne M. Talluto
 Mr. and Mrs. Gilbert Tauck
 Mr. and Mrs. Gregory T. Taylor
 Mr. and Mrs. Nick Thomas
 Mr. and Mrs. Alvin V. Tollestrup
 Mr. Michael E. Traynor
 Ms. Sally L. TreKell
 Ms. Bessie Trigourea
 Mr. J. Michael Trumbold
 Mr. Scott F. Turow
 Mr. and Mrs. David Van Dusen
 Mr. Shawn K. VanDerziel^ and Mr. Jay Clarke
 Ms. Belle Waldfogel and
 Ms. Georgean Goldenberg
 Ms. Emily J. Waldren
 James and Kimberly Watson
 Mr. and Mrs. Gary W. Watt
 Mr. Robert Weiglein^
 Ms. Jane Wells and Mr. Burton C. Ferrini
 Mrs. Dorothy B. White
 Mr. and Mrs. Raymon Whitney
 Mr. and Mrs. Robert E. Wilkens
 Mrs. Aimee G. Willetts^
 Mr. Michael J. Wisnowski and
 Ms. Dawn I. Walker
 Ms. Vickie C. Wood
 Mr. and Mrs. Tom Wotovich
 David and Kay Wulf
 Mr. N. C. Yang and Ms. Ding D. Yang
 Mr. F. W. Zandrew
 Mr. and Mrs. Thomas Ziolkowski

FIELD ADVENTURERS

Anonymous (12)
 Mr. and Mrs. Richard L. Abrahams
 Mr. Roger S. Adamek
 Mr. Cyrus H. Adams
 Mr. and Mrs. David L. Ader
 Dr. and Mrs. Leon Adler
 Ms. Susan S. Adler
 Ms. DeAnne M. Aguirre

Mr. and Mrs. Robert D. Ahlgren
 Bob and Pam Aitchison
 Ms. Judith A. Akers
 Mr. and Mrs. Colin Albertson
 Mr. Greg Albiero
 Mr. and Mrs. Arlyn E. Albrecht
 Mr. William N. Aldeen and Ms. Shelley Torres
 Ms. Gwen Alexander
 Mr. and Mrs. Walter Alexander
 Mr. Scott W. Allard
 Mr. and Mrs. Andrew P. Allen
 Mr. and Mrs. John Allen
 Ms. Leslie Allison
 Mr. and Mrs. Thomas J. Allison
 Mr. and Mrs. Michael Altman
 Mr. and Mrs. Pete Ammon
 Darrell and Deb Anderson
 Mr. and Mrs. Edwin H. Anderson
 Mr. Thomas A. Andreoli and
 Ms. Anne W. Mitchell
 Dr. and Mrs. William Annesley
 Ms. Alona W. Anspach and Mr. Ken Anspach
 Mr. and Mrs. Nicholas Antos
 Mr. Basil Apostolou
 Mr. and Mrs. Todd Arkebauer
 Mr. Joshua Arlow
 Mr. and Mrs. Bruce T. Armstrong
 Mr. and Mrs. Barry G. Arnason
 Ms. Harriet B. Arnold
 Mr. and Mrs. Daniel Arntzen
 Mr. and Mrs. Delbert W. Arsenault
 Ms. Nancy A. Artis Caton
 Ms. Catherine Ashdown and Mr. Neal Lofchy
 Ms. Courtney Ashley and Mr. Mark Wieting
 Mr. and Mrs. Clarence J. Atwood, Jr.
 Mr. and Mrs. Brett A. August
 Ms. Kaye B. Aurigemma
 Ms. Katherine A. Austin and
 Mr. Seymour A. Bortz
 Mr. and Mrs. Merrick Axel
 Mr. Arthur Baacke and Ms. Devan Procaskey
 Dr. Elizabeth C. Babcock
 Mr. and Mrs. Cooper Babich
 Mr. James S. Bacciocco
 Mr. Luke Baer
 Mr. and Mrs. Steve Baer
 Mr. Timothy R. Baker and Ms. Denise Guardino
 Mr. and Mrs. William W. Baker
 Mr. Greg Ball and Ms. Julie Kollhoff
 Ms. Julie Ball
 Mr. and Mrs. Stephen W. Ball
 Mr. and Mrs. Ronald B. Balsbaugh
 Mr. Roger Bancroft
 Mr. and Mrs. Merle H. Banta
 Mr. Wayne A. Baran
 Mr. and Mrs. Randolph C. Barba
 Ms. Katherine M. Barnash
 Mr. and Mrs. Martin S. Barnat
 Mr. and Mrs. Mervin R. Barnes
 Mr. Karl Barnickol and Ms. Sara Lippold
 Laurence and Sarah Barr
 Mr. and Mrs. Richard P. Barrett
 Ms. Gail Bartlett and Mr. Robert Weisman
 Kim and Carlo Basile
 Ms. Sandra Bass
 Mr. and Mrs. Daniel Basulto
 Stefanie and John Bates

Mr. John M. Beal
 Ms. Sylvia Beardsley
 Mr. and Mrs. Andrew Beaumont
 Ms. Nancy B. Beck
 Mr. William T. Beck and Ms. Doreine Carson
 Mr. and Mrs. Alvin G. Becker
 Mr. C. C. Becker
 Mr. Norbert Becker and Ms. Suzanne Becker
 Mr. and Mrs. Robert D. Becker
 Reverend William C. Beckmann
 Mr. and Mrs. William Bedford
 Mr. and Mrs. Jeffrey Beech
 Mr. and Mrs. Chris P. Behmer
 Ms. Nancy Behrendt
 Mr. Carlos Bekerman
 Mr. and Mrs. Michael D. Belsley
 Mr. and Mrs. Stephen E. Benefiel
 Arlene and Wayne Bennett
 Mr. Matthew Benoit and Ms. Cathleen Dohrn
 Mr. and Mrs. Peter B. Bensinger
 Mr. Stephen Benson
 Mr. Tom Benson
 Mr. and Mrs. Stuart Benzal
 Mr. and Mrs. James Berardi
 Dr. and Mrs. Michael Bercek
 Ms. Mary K. Bergman
 Mrs. Harold E. Bergquist
 Ms. Kate Berkeley
 Dr. and Mrs. Leonard Berlin
 Mr. and Mrs. Gene Bernardoni
 Mr. and Mrs. Robert Bernot
 Mr. and Mrs. Edward C. Berry
 Mrs. Lieselotte N. Betterman
 Mr. and Mrs. Adrian D. Beverly
 Ms. Christine Beynon and
 Ms. Meredith Wojciechowski
 Mr. and Mrs. Sanjay Bhasin
 Mr. and Mrs. Joseph Bianco
 Mr. and Mrs. Sam Bianco
 Mr. William E. Bible
 Ms. Lois J. Bider
 Mr. Rüdiger Bieler[^] and Ms. Petra Sierwald[^]
 Mr. and Mrs. Michael A. Bill
 Ms. Julie Billingsley
 Mr. and Mrs. Craig Birkey
 Dr. Michael D. Bishop
 Dr. and Mrs. James E. Bitter
 Ms. Kay A. Bjork
 Mr. and Mrs. John Blaser
 Mr. and Mrs. Merrill Blau
 Mr. and Mrs. Eckhard Blaumeller
 Mr. and Mrs. Jay S. Bleecker
 Ms. Susan Block-Lieb
 Mr. Jan Blok and Ms. Laura Melcher
 Ms. Carlene M. Blumenthal
 Mr. Jerry V. Bobek, Jr.
 Dr. R. D. Bock and Dr. Renee Menegaz-Bock
 Ms. Georgia Bockos
 Mr. David Bodnar
 Mr. and Mrs. Benny Boggess
 Raphael and Shirlann Boghosian
 Mr. and Mrs. Erwin F. Bogs
 Dr. Therese M. Bogs and Mr. W. Haser
 Mr. and Mrs. George Bohling
 Mr. Daniel A. Bolm and
 Mrs. Peggy J. Keating-Bolm
 Mr. and Mrs. Thomas C. Boltik

Mr. Marcello Bondurant
 Mr. and Mrs. Daniel Bookstaber
 Mr. and Mrs. Peter Bordwell
 Ms. Loris Bosques and Mr. Vincent Schurring
 Mr. and Mrs. Kevin L. Bostrom
 Mr. Richard J. Bowman
 Mr. and Mrs. William C. Bowman, Jr.
 Mr. Loren Bowns and Ms. Cynthia Bowns
 Mr. and Mrs. Jeff Boyce
 Mrs. Barbara A. Boyer
 Dr. and Mrs. Bruce Hattom Boyer
 Mr. and Mrs. Dennis E. Bozych
 Roger and Mary Bradford
 Mr. and Mrs. James Brady
 Mr. and Mrs. Scott Brady
 Mrs. Shirley Brady and Mr. Julian Callachor
 Mr. and Mrs. Tim Brandt
 Ms. Kimberlee A. Breckler
 Mrs. Marie Brelin
 Mr. and Mrs. Hugh F. Breslin
 Dr. and Mrs. David S. Bresnahan
 Mr. and Mrs. David Brewer
 Mr. and Mrs. Kenneth L. Brewer
 Mr. and Mrs. Charles A. Brickman
 Mr. and Mrs. Joseph M. Brickman
 Mrs. Ruth Brieger
 Mr. and Mrs. Lance M. Brisben
 Mary J. Brister and McKinley H. Brister
 Mr. Michael A. Brockman
 Mr. and Mrs. William Broderick
 Mr. and Mrs. John Broeker
 Mr. and Mrs. Bruce S. Bronson
 Mr. and Mrs. Jonathan Bross
 Ms. Alice C. Brown
 Mr. Bo Brown and Mr. Bob Faull
 Mr. Seth N. Brown and Ms. Marya Lieberman
 Ms. Shannon E. Brown
 Mr. and Mrs. Todd Brown
 Mr. and Mrs. Robert Broyles
 Mr. Trevor Bruss
 Mr. and Mrs. Archibald T. Bryant
 Mr. Steve Buchtel and Ms. Laura Devine
 Mr. and Mrs. David M. Buck
 Dr. Stephen J. and Mrs. Susan P. Buck
 Mr. and Mrs. Thomas Buck
 Mr. Daniel B. Budaj
 Mr. Thomas M. Buess
 Mr. and Mrs. Michael Bukhalo
 Susan R. Bulley
 Ms. Laurie H. Bulson
 Mr. and Mrs. Michael C. Bunnell
 Mr. and Mrs. Werner Buol
 Mr. and Mrs. Werner H. Buol
 Dr. Sharon S. Burke



Mr. and Mrs. Timothy L. Burke
 Mr. Timothy J. Burroughs and Ms. Barbara Smith
 Ms. Holly Ann Burt
 Dr. and Mrs. Rodney L. Burton
 Mr. and Mrs. James Butler
 Ms. Joan Byas and Ms. Sharon Day
 Mr. and Mrs. Danny J. Byrne
 Mr. Thomas Byrnes and Ms. Carol Rigmark
 Dr. Ernest Byrom and Ms. Antoinette L. Farley
 Eileen Cahill and Family
 Ms. Lisette R. Calderon
 Ms. Geneva R. Calloway and Mr. Robert Calloway
 Ms. Judith A. Caloud and Ms. Mary A. Caloud
 Mr. and Mrs. Daniel Cammarano
 Dr. and Mrs. Rafael Z. Campanini
 Dr. and Mrs. John R. Canning
 Mr. Leslie P. Capri
 Mr. and Mrs. Drew A. Carhart
 Mr. and Mrs. Thomas M. Carmazzi
 Mr. and Mrs. Larry Carney
 Mr. and Mrs. Robert R. Carpenter
 Mr. and Mrs. Charles Carroll
 Mr. and Mrs. Robert E. Carroll
 Mr. and Mrs. Steven Carter
 Mr. and Mrs. Robert P. Casey
 Mr. and Mrs. Donald Cassil
 Mr. and Mrs. John W. Castle
 Mr. and Mrs. Joseph Castro
 Mr. and Mrs. Joseph J. Catanzaro
 Mr. and Mrs. Scott Caudell
 Mr. and Mrs. David D. Cemate
 Mr. and Mrs. Raymond M. Champion, Jr.
 Ms. Suzan L. Chap
 Mr. and Mrs. Wilfred P. Chapleau III
 Mr. and Mrs. Danny Chapman
 Mr. and Mrs. Thong M. Cheng
 Julie and Joshua Chernoff
 Ms. Joan S. Cherry and Mr. John R. Cara
 Mr. and Mrs. John A. Chojnicki
 Mrs. Emily J. B. Christian
 Mr. and Mrs. R. Lee Christie
 Mr. Robert Raidt and Ms. Katharine Christmas
 Ms. Grace H. Chun
 Ms. Mary Lee Cichy
 Ms. Janet Cizmar
 Mr. and Mrs. Paul Clark
 Randall Clark
 Dr. and Mrs. Robert D. Clark
 Mr. Andrew Clarke
 Ms. Barbara Clarke
 Brian Clarke and Margaret Feit Clarke
 Mr. and Mrs. Albert C. Claus
 Mr. and Mrs. Joe Clayton
 Ms. Michelle Clayton

Mr. Peter L. Clerkin
 Ms. Sharon L. Cline
 Mr. John R. Clinton
 Mr. and Mrs. John E. Clisham
 Mr. Benjamin A. Coats
 Ms. Sandra Cody and Mr. Joe Gwinn
 Mr. and Mrs. Robert P. Coffin
 Mr. William S. Cohen
 Mr. Ray Colebaugh
 Dr. and Mrs. John J. Coleman III
 Mr. and Mrs. Terrance Coleman
 Mr. and Mrs. Terrence Collins
 Dr. Cynthia L. Comella
 Pam and Howard Conant, Jr.
 Ms. Cira V. Conley and Ms. Stephanie Limesand
 Mrs. Gladys Connolly
 Ms. Lorraine M. Conroy
 Mr. and Mrs. Louis J. Conti
 Mr. Mark D. Contratto
 Mr. and Mrs. Barry Conybeare
 Mr. and Mrs. Mercer Cook
 Mr. and Mrs. Paul R. Cooper
 Ms. Julia Corcoran
 Ms. Nancy Corral
 Mr. Gerald Corrigan
 Ms. Kristine N. Cosentino
 Mr. and Mrs. Matt Cotter
 Mr. John Cottes and Ms. Linda Brink
 Mr. Mathew A. Cotton
 Ms. Wendy Covelli
 Ms. Noreen Coyan
 Mr. and Mrs. Randall J. Crabtree
 Ms. Susan Craft
 Ms. Carol A. Craig and Mr. Charles Bell
 Mrs. Betty Ann Cratty
 Ms. Billie Crotty
 Ms. Susan M. Crowell and Ms. Kathleen Cooke
 Ms. Eleanor L. Crumback
 Mr. and Mrs. Geoffrey R. Cubitt
 Mrs. Jessica Curley and Mr. Barry Mendeloff
 The Honorable Barbara Flynn Currie
 Dr. and Mrs. Arthur W. Curtis, M.D.
 Mr. and Mrs. David V. Curtis
 Mr. and Mrs. Donald Curtis
 Mr. and Mrs. Charles F. Custer
 Mr. Michael P. Cwiklik
 Ms. Wanda Cygan
 Ms. Anissa Cyhaniuk
 Mr. and Mrs. Henry Czopek
 Mr. and Mrs. Jay Dalicandro
 Mr. and Mrs. James M. Daly II
 Robert and Cathy Daly
 Mr. and Mrs. John M. Damron
 Mr. and Mrs. Chuck Danby
 Mr. and Mrs. William J. Darley
 Ms. Judy Dauparas
 Mr. and Mrs. Andrew J. Davidson
 Mr. and Mrs. Bruce Davidson
 Dr. and Mrs. Lloyd Davidson
 Ms. Nanci J. Davidson
 Ms. Laura Davis
 Mr. and Mrs. William L. Davis III
 Mr. and Mrs. Gerald D. Dawes, Jr.
 Lori and Bill Dawson
 Mr. and Mrs. Dennis De Bruler
 Mr. Pierre De Smul and Dr. Carol De Smul
 Mr. Bruce Dean

Mrs. Wendy Dearth and Ms. Katie Dearth
 Mr. and Mrs. Mark D. Deaton
 Mr. and Mrs. Eugene C. Decker
 Mr. and Mrs. David Dekker
 Mr. and Mrs. Ed delCastillo
 Ms. Judith A. DeLeon
 Louis* and Margarette Delgado
 Mr. Larry E. DeMar
 Ms. Karen DeMarini
 Mr. and Mrs. Brian DeRe
 Mr. Daniel Derechin and Ms. Karen Seder
 Mr. and Mrs. William E. Derrah III
 Mr. and Mrs. Gregory E. Derylo
 Dr. and Mrs. Eugene R. DeSombre
 Ms. Doris Devine
 Mr. William Dewoskin
 Ms. Eloise DeYoung
 Mr. and Mrs. Philip Diamond
 Ms. Rosanne L. Diamond
 Ms. Amy T. Dickinson
 Ms. Leonora Dickson
 Mr. and Mrs. Robert J. DiDomenico
 Ms. Janet E. Diehl
 Ms. Louise E. Dieterle
 Dr. and Mrs. Peter W. Dietz
 Mr. and Mrs. Gerald DiFabrizio
 Mr. and Mrs. William Differding
 Ms. Patricia Ann Dihel
 Mr. and Mrs. William S. Dillon
 Mr. William D. Dini
 Ms. Henrietta L. Dixon
 Mr. and Mrs. Robert S. Dobis
 Mr. Michael Dobray
 Mr. and Mrs. Thomas W. Doddridge
 Leonard and Patricia Dominguez
 Mr. Daniel J. Donahue
 Donald and Margaret Donahue
 Ms. Diane Donham and Mr. Alan Rudy
 Mr. and Mrs. Joseph E. Doninger
 Mr. and Mrs. Richard R. Donnelley III
 Ken and Karen Dort
 Mr. and Mrs. James H. Douglas
 Kevin and Katie C. Doyle
 Mrs. Sally M. Draper and Mr. John Draper
 Mr. Thomas A. Drebenstedt
 Mr. George D. Driggers
 Mr. Joseph H. Drummond
 Mr. Raymond Drymalski
 Mike and Vickie Drzik
 Dr. and Mrs. Anthony B. D'Souza
 Mr. Michael S. Dublak and
 Mrs. Sharon M. Authier
 Mr. and Mrs. Harvey Dulin
 Dr. and Mrs. Stephen J. Dulland
 Mr. and Mrs. Ferne L. Dungan
 Mr. and Mrs. Thomas E. Durica
 Ms. Marguerite Durkin
 Mr. J. Patrick Dyson
 Mr. and Mrs. Thomas E. Earle
 Ms. Kristine B. Easton
 Ms. Glenna R. Eaves and
 Mr. Christopher J. Boebel
 Mr. Larry Ebert
 Ms. Margaret M. Eiden
 The Robert G. Eiserman Family
 Mr. and Mrs. David Eisinger
 Mr. and Mrs. Joseph J. Eisman

Mr. and Mrs. John Elias
 Mr. Allen E. Eliot
 Mr. J. Thomas Eller
 Mr. Timothy Elliott and Mrs. Marissa Elliott
 Professor Jean B. Elshstain
 Mr. John E. Emel and Ms. Cordelia Ryan
 Mr. Olin N. Emmons
 Mr. and Mrs. Tomy Endo
 Mr. and Mrs. Wayne Eng



Ms. Barbara Engel
 Ms. Janice L. Engle
 Ms. Erika E. Erich
 Ms. Alissa Erogbogbo
 Dr. and Mrs. James O. Ertle
 Mr. and Mrs. Mark A. Ertler
 Mr. and Mrs. Ronald L. Eshleman
 Mr. and Mrs. Abdiel Estrella
 Mr. and Mrs. Blane Evans
 Mr. and Mrs. Justin Evans
 Dr. and Mrs. Richard H. Evans
 Ms. Rose Anne Everson
 Mr. and Mrs. Thomas F. Ewert
 Dr. Marilyn D. Ezri
 Mr. and Mrs. David P. Facklam
 Ms. Diana H. Fagan
 Mr. Harold H. Fahnoe, Jr. and Mr. Chris Fahnoe
 Mr. Harry R. Fair and Mrs. Carolyn E. Jordan
 Mr. and Mrs. Albert J. Falasz
 Jennifer Fales and Greg Morris
 Mr. Daniel G. Falotico
 Ms. Irene Falout
 Captain and Mrs. W.T. Fantry
 Mr. Jeffrey Farbman and Mrs. Ann Greenstein
 Mr. and Mrs. John Faulhaber
 Mr. and Mrs. Terry M. Faulk
 Mr. Thomas A. Faulkner
 Ms. Julie A. Federico and Mr. Jay Mitchell
 Ms. Susan H. Feit and Dr. Neil R. Friedman
 Amy Muran Felton and Thadford A. Felton
 Mrs. Joan L. Fencil
 Dr. Michael Fennewald and
 Dr. Pamela Fennewald

Dr. and Mrs. Balbino B. Fernandez
 Mr. and Mrs. Jose L. Ferrer
 Mr. and Mrs. James Ferro
 Mr. and Mrs. ^ Conrad T. Fialkowski
 Ms. Amy M. Fielek
 Robert and Mary Ellen Fieseler
 Ms. Judith A. Findorff
 Mr. and Mrs. Mark Finn
 Ms. Susan Fischbach
 Ms. Mary Fischer and Ms. Kelly Greenberg
 Mr. and Mrs. Peter D. Fischer
 Mr. Timothy D. Fischer and Mr. Ron Shaw
 Mr. and Mrs. Justin M. Fishbein
 Mr. and Mrs. Duncan G. Fisher
 Mr. and Mrs. Morgan L. Fitch, Jr.
 Robert and Patricia Fitzgerald
 Mr. and Mrs. Brian C. Fitzpatrick
 Timothy and Mary Flanagan
 Mr. and Mrs. Timothy Flannery
 Mr. and Mrs. Dale Fleming
 Mrs. Sally Fletcher
 Mr. and Mrs. Steve Flexman
 Mr. Geoffrey A. Flick
 Ms. Melanie Floyd
 Mr. and Mrs. Derek Flynn
 Mr. and Mrs. John F. Flynn
 Mr. and Mrs. Kevin Flynn
 Dr. and Mrs. James L. Foght
 Mr. and Mrs. William D. Folland
 Dr. and Mrs. James J. Foody
 Mr. and Mrs. James B. Foote
 Mr. and Mrs. John E. Ford
 Mr. Liam T. Ford and Ms. Ann R. Weiler
 Mr. and Mrs. Leroy Foreman
 Mr. and Mrs. James W. Forhan
 Mr. and Mrs. George W. Forrest
 Ms. Lynette Foss
 Ms. Katherine M. Fox
 Dr. and Mrs. Alvin L. Francik
 Dr. and Mrs. Norman Frankel
 Mr. and Mrs. Lester E. Frankenthal III
 Mr. and Mrs. William D. Franz
 Mr. and Mrs. Douglas Freedman
 Mr. and Mrs. Clifford Freiburger
 Ms. Kristine L. Freitas
 Ms. Eleanor B. Frew
 Ms. Theresa E. Fric
 Mr. and Mrs. Robert Friedberg
 Mr. Lawrence Friedman and
 Mrs. Susan Snodgrass
 Ms. Tara A. Fumerton and Mr. David A. Porter
 Mr. and Mrs. Joe Furlong
 Mr. and Mrs. James M. Furner
 Ms. Anne V. Fussell
 Mr. John F. Fyfe and Ms. Joan M. Greco
 Mr. and Mrs. Max C. Gabbard
 Mr. and Mrs. Daniel B. Gaeta
 Mr. and Mrs. Taylor Gaffney
 Mr. and Mrs. John Gage
 Mr. and Mrs. John Gaines
 Mr. Gregory G. Gajda
 Mr. Thomas F. Gajewski and Ms. Marisa Alegre
 Ms. Frances Gale and Ms. Virginia Gale
 Mr. and Mrs. Cornelius Gallagher
 Ms. Donna M. Gallee
 Ms. Carol A. Galli and Ms. Nicole Mohler
 Mr. and Mrs. Roger Gansauer



Ms. Martha A. Garcia
 Mr. Richard H. Gardner
 Mr. Andrew Garman and Mrs. Deborah Garman
 Mr. and Mrs. Charles Gaul
 Mr. and Mrs. Karl F. Gawlas
 Mr. and Mrs. Nick Gawrit
 Ms. Julie L. Gentes
 Mr. and Mrs. David F. Geraghty
 Ms. Patricia S. Gerardi
 Mr. and Mrs. Stephen A. Gerlicher
 Dr. and Mrs. Thomas P. Germino
 Mr. Charles E. Geyer
 Mr. and Mrs. Jerry Gilbert
 Mr. and Mrs. David A. Gillam
 Ms. Judy Girard
 Mr. Timothy Glascott
 Mr. and Mrs. Steven Glasgow
 Mr. and Mrs. Stanford L. Glass
 Mr. John A. Glassgow
 Mr. and Mrs. Thomas F. Glennon
 Mr. and Mrs. Donald Glyman
 Ms. Maureen Glynn
 Mr. Richard Gnaedinger
 Amy and Greg Goberville
 Mr. and Mrs. William H. Gofen
 Mr. and Mrs. Joseph P. Goldberg
 Mrs. Mary A. Goldberg
 Ms. Betty Goldiamond
 Dr. and Mrs. Robert D. Goldman
 Ms. Susan R. Goldman
 Dr. David Goldrath and Dr. Carol Goldrath
 Ms. Susan Goldschmidt and Mr. Miles Taub
 Ms. Amy L. Goldsmith
 Mr. and Mrs. Donald F. Goldsmith
 Mr. David Cohen and Ms. Debra Goldstein
 Ms. Joan Goldstein
 Mr. and Mrs. Marion Golebiowski
 Mr. Christopher G. Golec
 Mr. and Mrs. Jesus Gonzalez
 Ms. Elizabeth L. Goodbody and
 Mr. Ralph P. Beck
 Ms. Cynthia E. Goodenough
 Mr. and Mrs. Gene M. Gooding
 Ms. Dorothy G. Goos
 Mr. Gary Gordon and Ms. Marilyn Hirsch
 Mr. and Mrs. George H. Gordon, Jr.
 Mr. and Mrs. Anthony Gorski
 Mr. and Mrs. Donald E. Goss
 Ms. Judith Graber and Mr. Paul Kuehnert
 Terry Grace and Judy Gaietto-Grace

Ms. Judith A. Graf
 Don and Jane Gralen
 Ms. Karen L. Granda and Mr. John S. Mrowiec
 Dr. Lance Grande^ and Dr. Terry Grande
 Mr. and Mrs. Craig C. Grannon
 Mr. and Mrs. Elisha Gray III
 Ms. Leila S. Green
 Mr. and Mrs. Richard K. Green
 Mrs. Kathleen P. Greenawalt
 Dr. Norman C. Greenberg and
 Dr. Gilda M. Greenberg
 Mr. and Mrs. Mark J. Greenwood
 Mr. and Mrs. Byron L. Gregory
 Mrs. Nicole Grelecki
 Ms. Catherine A. Griffin
 Mr. and Mrs. Bobby D. Griffith
 Mr. and Mrs. Wayne J. Grobarcik
 Mr. John Grobe
 Ms. Katharine C. Gross
 Mr. Alvin J. Grossman
 Mr. Larry Grote
 Mr. and Mrs. Greg Groth
 Rose and Steven Grumbine
 Mr. and Mrs. David L. Grumman
 Ms. Patricia Grundke
 Mr. Robert L. Grzywinski and Ms. Pamela S. Moy
 Ms. Roslinda Guerra
 Ada Mary Gugenheim and Jon N. Will
 Dr. and Mrs. John W. Gustaitis, Jr.
 Ms. Dianne Guttermna and Mr. Ian Guttermna
 Mr. and Mrs. George Guzlas
 Mr. Mark R. Gwozd
 Mrs. Evangeline R. Haarlow
 Mr. and Mrs. Dean L. Haas
 Mr. Robert A. Habermann
 Mr. and Mrs. Joseph G. Hagee
 Mr. and Mrs. Mervin D. Hagen
 Mr. and Mrs. John A. Hagenah
 Mr. and Mrs. John Hague
 Ms. Dianne Haines
 Ms. Holley Hall
 Dr. and Mrs. George S. Hallenbeck
 Mr. Christopher J. Hallett and Ms. Jackie Lustig
 Philip and Deborah Halpern
 Mrs. June R. Hamer
 Mr. and Mrs. John Hamilton
 Mr. and Mrs. Timothy P. Hamilton
 Mr. Michael Hammerman
 Mr. and Mrs. Michael S. Hammond
 Mr. and Mrs. Joel L. Handelman

Mr. Larry L. Hanes
 Mr. Joseph Hanley and Ms. Kristy Mardis
 Mr. and Mrs. Wayne R. Hannah, Jr.
 Mr. and Mrs. Kenneth Hansen
 Ms. Amy E. Harmon
 Mr. and Mrs. Mike Harms
 Mr. and Mrs. Richard Harold
 Mr. and Mrs. Charles Harris
 Mr. and Mrs. Kenneth Harris
 Mr. and Mrs. Ralph Harris
 Ms. Mary Anne Harrison
 Mr. William R. Hartig
 Mr. and Mrs. Max E. Hartl
 Mr. and Mrs. David Hartman
 Dr. Harrieth M. Hasson and
 Ms. Sharon A. Sharrett
 Mrs. Jacqueline Hatch
 Mr. and Mrs. Edward D. Hatcher
 Mr. and Mrs. Martin F. Hauselman
 Mr. and Mrs. Allan Hausfeld
 Mr. and Mrs. Dieter R. K. Haussmann

Mr. and Mrs. Garth Hermanson
 Mr. Manny Hernandez and Ms. Anna Hernandez
 Ms. Sarah Hernandez
 Mr. and Mrs. Rory Herriman
 Mr. and Mrs. Adolph S. Herseith
 Dr. Charlotte C. Herzog
 Mr. and Mrs. Robert M. Hickey
 Mr. and Mrs. Howard E. Hight
 Mr. and Mrs. David M. Hilko
 Mr. and Mrs. Charles W. Hillman
 Mr. Kenneth R. Hilton and Mr. Kenton Owens
 Mr. and Mrs. Austin L. Hirsch
 Mr. and Mrs. Richard M. Hirsch
 Ms. Geraldine B. Hietko
 Dr. and Mrs. Zachary I. Hodes
 Mr. and Mrs. George E. Hoganson
 Mr. and Mrs. James M. Hohner
 Mr. and Mrs. Ed Holba
 Mr. and Mrs. Herb Holderman
 Mr. Craig J. Holderness
 Dr. and Mrs. James M. Holland

Mr. and Mrs. Colin Hudson
 Mr. and Mrs. Frederick J. Hug, Jr.
 John and Marilyn Hugh
 Mr. and Mrs. Robert Hughes
 Mr. and Mrs. Charles Hughley
 Mr. and Mrs. Phillip D. Hulben
 Mr. and Mrs. Jeffrey L. Hunt
 Mr. and Mrs. Robert Hurl
 Mr. and Mrs. Charles A. Hurst
 Mr. Edward H. Huson
 Mr. and Mrs. Richard W. Hutson
 Mr. Michael S. Hyman
 Ms. Maria A. Iafollo
 Mr. and Mrs. Allan Immelman
 Ms. Susan M. Ingalls
 Mr. and Mrs. Steven D. Ingraham
 Mr. and Mrs. Gary Ingram
 Mr. Steve M. Isaac and Ms. Judy Olds
 Ms. Ellen Isaacson
 Donna and Marshall Isaacson
 Ms. Nancy Isaacson
 Mr. and Mrs. Glynn Isoda
 Ms. Cheryl Istvan and Mr. Keith Daubenspeck
 Ms. Anne Iwinski
 Ms. Denise Jabotte
 Mr. and Mrs. Richard Jacob
 Ms. Bernice Jacobs
 Mr. and Mrs. Arthur I. Jacobson
 Mr. and Mrs. Robert A. Jahnke
 Mr. and Mrs. John Jakob
 Mr. and Mrs. Paul A. James
 Mr. and Mrs. Robert B. James
 Joseph and Rebecca Jarabak
 Ms. Janice A. Jarnholm
 Mr. and Mrs. Sidney F. Jarrow
 Ms. Catherine A. Jaselskis and
 Mr. Gary G. Alberts
 Mr. and Mrs. James S. Jasionowski
 Mrs. Barbara B. Javaras
 Mr. and Mrs. Donald Jeffers
 Miss Rose Mary Jelinek
 Mr. and Mrs. Terrence J. Jelinek
 Mr. Norman Jenkins and Ms. Diane McNeilly
 Ms. Mary C. Jenner and Mr. George S. Dengler
 Ms. Deborah P. Jensen
 Mr. and Mrs. William A. Jindrich
 Ms. Judy Johanson
 Mr. and Mrs. Alan G. Johnson
 Mr. and Mrs. Carl W. Johnson
 Mr. and Mrs. Donald C. Johnson
 Mr. and Mrs. Jerald L. Johnson
 Mr. Mark A. Johnson and Ms. Judith M. Wright
 Dr. Maryl R. Johnson
 Mr. Michael J. Johnson and
 Ms. Elizabeth A. Barnes
 Dr. Randon Johnson
 Ms. Stacy L. Johnson
 Mr. and Mrs. Douglas L. Jones
 Mr. and Mrs. Daniel H. Jones
 Mr. and Mrs. Robert A. Jones, Jr.
 Ms. Sharon Jones
 Mr. and Mrs. Horace W. Jordan
 Eric and Cathy Jorgensen
 Mr. Richard W. Jost
 Dr. and Mrs. Gary M. Jouris
 Mr. and Mrs. Robert Judelson
 Mr. Timothy Jurek

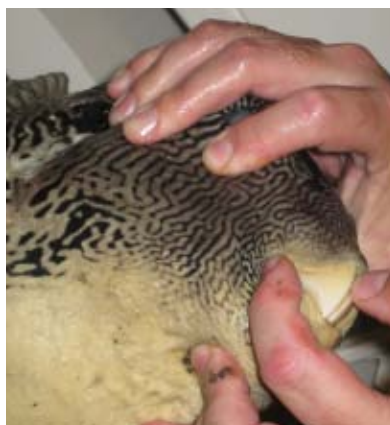


Mr. Jeffrey Havsy
 Mr. and Mrs. Brent Hawkins
 Mr. and Mrs. Jim Haworth
 Mr. and Mrs. Ron Hay
 Ms. Kristen Hayes and Mr. Davin Johnson
 Mary J. Hayes, D.D.S.
 Kathleen and Daniel Hayman
 Mr. and Mrs. Brendan Head
 Mr. and Mrs. Thomas C. Heagy
 Wyrta E. Heagy and Marcelle Heagy
 Mrs. Eugene Heal
 Lawrence R. Heaney, Ph.D. ^
 Mr. and Mrs. F. Thomas Hecht
 Mrs. Bette Heide
 Ms. Megan Heitzler
 Mr. Douglas Helm
 James A. and Mary E. Henderson
 Mr. and Mrs. Kenneth M. Henderson, Jr.
 Mr. and Mrs. Michael C. Henkel
 Ms. Karen J. Hennessy
 Ms. Marilyn Hennessy
 Mr. and Mrs. Donald J. Henry
 Mr. and Mrs. James P. Hepp
 Ms. Joyce K. Herdliska
 Mr. and Mrs. Paul M. Herkes

Ms. Christine B. Holliday
 Mr. Robert A. Holmgren
 Mr. and Mrs. Fred Holubow
 Mr. and Mrs. Vern Holzhall
 Mr. Donald S. Honchell and Ms. Susan K. Horn
 Mr. and Mrs. Dean T. Honda
 Mr. and Mrs. George H. Honig
 Mr. and Mrs. Charles L. Honkisz
 Mr. and Mrs. Douglas J. Hood
 Mr. and Mrs. Thomas J. Hope
 Mr. Glenn Hopkins
 Mr. and Mrs. James D. Hornbrook
 Mr. and Mrs. Jay Hornstein
 Mr. and Mrs. Michael L. Horsley
 Andrew and Cheri Houha
 Rose Houston Charitable Foundation
 Mr. and Mrs. James Hovis
 Ms. Ardi Howard and Mr. Nathan Howard
 Mr. Steven Howard and Mrs. Kathy Look
 Mrs. Laurie W. Howick
 Ms. Christie Hoyt
 Mr. and Mrs. Mark S. Hoyt
 Mr. and Mrs. David Hubbard
 Dr. and Mrs. Michael S. Huckman
 Mr. Stewart S. Hudnut and Mrs. Vivian Leith

Mrs. Elizabeth E. Jurjevich
 Mr. and Mrs. Richard Juro
 Mr. and Mrs. Joseph W. Kabbes
 Mr. and Mrs. Tom F. Kacprowicz
 Miss Judith Kadish
 Mr. and Mrs. Thomas Kadlec
 Mr. and Mrs. Erik T. Kahler
 Ms. Jill M. Kainu
 Mrs. Mary S. Kaiser
 Ms. Kathleen G. Kallan
 Dr. Sona Kalousdian and Dr. Ira D. Lawrence
 Mrs. Karen A. Kammer
 Ms. Patricia M. Kammerer
 Dr. Mary G. Kane and Mr. Vern Kerchberger
 Mr. and Mrs. Terrence Kaneshiro
 Mrs. Ruth Kapes
 Mr. and Mrs. Allan Kaplan
 Mr. and Mrs. Richard F. Karger
 Mr. and Mrs. John A. Karoly
 Mr. and Mrs. Gilbert Kart
 Mr. and Mrs. John S. Kasang
 Ms. Verla Kasmerchak
 Mr. and Mrs. Richard W. Kasperson
 Ms. Maria Kataniak
 Ms. Carol J. Katzberger
 Mr. and Mrs. Arthur H. Kay
 Mr. and Mrs. Michael G. Keck
 Ms. Cynthia K. Keller
 Mr. Matthew J. Keller, Jr.
 Ms. Denise A. Kelley
 Mr. and Mrs. Dennis J. Kelly
 Mrs. and Mr. Nancy L. Kelly
 Mr. William E. Kelly
 Mr. and Mrs. Austin Kelly
 Ms. Miriam J. Kelm
 Mr. Christopher M. Kennedy
 Ms. Doris Kennedy and Mr. Joseph Hoffman
 Mr. and Mrs. James Kennedy
 Mr. and Mrs. Terrence Kennedy
 Mr. and Mrs. William S. Kenney
 Mr. and Mrs. Harrison Kennicott
 Dr. Susan B. Kern and Ms. Alex Yamron
 Ms. Paige Kerr
 Dr. and Mrs. Alan C. Keyes
 Robert and Mary Khoury
 Mr. and Mrs. Robert A. Kilinskis
 Mr. and Mrs. James P. King
 Ms. Niamh King
 Ms. Teresa A. King
 Ms. Mary C. Kinney
 Mr. Dennis J. Kinzig
 Mr. and Mrs. Albert Kircher, Jr.
 Mr. and Mrs. James R. Kirk
 Ms. June A. Kirwan
 Mr. and Mrs. Gerald Kissner
 Ms. Anne V. Klecka
 Mrs. Ethyl L. Kleckner
 Mr. Keith Kleehammer and Ms. Cheryl Sweeney
 Mr. and Mrs. Steven D. Klefstad
 Dr. Bruce S. Kleinman and
 Ms. Maureen P. Vachta
 Dr. and Mrs. Thornton C. Kline, Jr.
 Ms. Sharon Klosinski
 Mr. Joe Klug
 Ms. Judith L. Knie
 Mr. and Mrs. Alfred J. Knox
 Mr. Timothy B. Knuth and Ms. Elizabeth Tate

Ms. Lottie J. Kobza
 Ms. Sibyl Kobza and Ms. Laura L. Kobza
 Mr. and Mrs. Norman A. Koglin
 Ms. Laura Koh
 Ms. Gera-Lind Kolarik
 Mr. and Mrs. Rasit Konuk
 Mr. and Mrs. Trevor Kori
 Mrs. Joan J. Kosinski
 Mrs. Holly Kost and Mr. Kelly Kost
 Mr. and Mrs. George Koutsonicolis
 Mr. and Mrs. David Koza
 Mr. John Kozak
 Mr. and Mrs. Gregory A. Kozeny
 Ms. Regina Krakowski
 Mr. and Mrs. James Krambeer
 Mr. and Mrs. Jeffrey M. Krasner
 Louis Kraus, M.D. and Ruth Kraus, Ph.D.
 Mr. and Mrs. W. P. Krauss
 Mr. Brett Kreisman
 Mr. and Mrs. Lee V. Kremer
 Mr. and Mrs. Jeffrey A. Kriezelman
 Mr. John Kristoff
 Mrs. William J. Kristy



Mr. and Mrs. Brian Krob
 Mr. and Mrs. Larry S. Krucoff
 Mr. and Mrs. Gilbert K. Krulke
 Mr. and Mrs. Michael J. Kuehl
 Mr. and Mrs. Robert Kukulka
 Susan and Duane Kullberg
 Mr. and Mrs. Eric Kurbat
 Mr. Kyle Kurfirst
 Mr. and Mrs. Sheldon F. Kurtz
 Mrs. Pauline L. Kuta
 Ms. Lynne La Jone and Mr. Chris Mollet
 Mr. and Mrs. Mark R. Laatsch
 Mr. Robert A. Ladewig
 Dr. Ted J. Lafeber and Ms. Christine S. Davis
 Mr. and Mrs. Lester M. Lampert
 Mr. and Mrs. Eliot A. Landau
 Mr. and Mrs. Bradley G. Lane
 Mr. and Mrs. Lee Lane
 Mr. and Mrs. William W. Lane
 Ms. Christine J. Laperuto and
 Mr. William J. Roznowski
 Ms. Amelia Larrazolo and Mr. Moises Rangel
 Mr. Albert K. Larsen
 Mr. and Mrs. Charles W. Larsen
 Mr. and Mrs. David R. Larson
 Ms. Marie R. Larson

Mr. and Mrs. Robert Laskey
 Mr. and Mrs. David Latham
 Mr. and Mrs. Michael Laube
 Ms. Linda S. Lauterbach
 Mr. and Mrs. Arthur LaVelle
 Mr. and Mrs. Herbert G. Lawrence
 Mrs. Diane Lawrence-Moriarty and
 Mr. Robert Moriarty
 Mrs. Samuel T. Lawton, Jr.
 Ms. Michelle D. Layman
 Mr. and Mrs. David C. Lazar
 Ms. Mary L. Leahy
 Mr. and Mrs. Arnold Learner
 Mr. Aaron Lebovitz and Ms. Donna Myers
 Ms. Beverly Leding
 Mr. and Mrs. Roy S. Lee
 Mr. Frank R. Miller and Ms. Nancy M. Lee
 Dr. Steven H. Lee and Dr. Kimberly F. Lee
 Mr. William M. Lee, Jr.
 Mr. Glenn Lefkowitz
 Mr. and Mrs. Harold A. Leftwich
 Mr. and Mrs. Stephen H. Legg
 Mr. Paul A. Lehman and Ms. Ronna Stamm
 Ms. Bernadine J. Lelko
 Mr. and Mrs. Kurt A. Lentsch
 John C. and Suzette Leonard
 Mr. Matthew Leonard and Ms. Theresa Corrao
 Mary and Ralph Leonard
 Mr. and Mrs. Vincenzo O. Leone
 Mr. Barry Lesht and Ms. Kay Schichtel
 Mr. and Mrs. Thomas E. Lesko
 Mr. William T. Leslie
 Ms. Joanne Lesne and Mr. Darryl Wilson
 Mr. and Mrs. Gary Lessenberry
 Mr. and Mrs. John G. Levi
 Mr. and Mrs. Lee Levin
 Mr. Gregory Lewandowski and
 Ms. Kathleen Stenson
 Mr. and Mrs. Kenneth C. Lewin
 Mr. and Mrs. Donald Lewis
 Mr. Gilbert Lichstein and
 Mrs. Ruth Czarnecki-Lichstein
 Dr. and Mrs. David B. Lieb
 Robert Lifton and Carol Rosofsky
 Mr. and Mrs. Richard J. Linden
 Mr. and Mrs. Robert E. Lindgren
 Mr. and Mrs. Bert H. Lindstrom
 Dr. and Mrs. Gordon T. Lindstrom
 The Linley Family
 Mrs. Cynthia C. Linton
 Mrs. Mary S. Lippa
 Mr. and Mrs. Steven E. Lippai
 Ms. Lois Lipton and Mr. Peter Carey
 Dr. and Mrs. Stewart D. Lipton
 Mr. Joseph F. Lizzadro III
 Mr. and Mrs. William F. Lloyd
 Mr. and Mrs. J. William Locke
 Mrs. Carmella A. Lockwood
 Mr. and Mrs. Warren H. Long
 Ms. Bonnie Lord and Ms. Katie Lord
 Mr. Joseph G. Loundy
 Mr. and Mrs. Ralph Love
 Dr. Glynn R. Lowrey
 Mr. and Mrs. Gavin Lowrey
 Ms. Vaneza Lozada and Mr. Angel Mercado
 Mr. and Mrs. Larry Lubell
 Dr. Yolande Lucas and Dr. A. E. M. Zaki

Claude and Ruth Lucchesi
 Dr. and Mrs. Louis P. Lukancic
 Dr. John R. Lurain and Dr. Nell S. Lurain
 Ms. Lisa Lux and Mr. J. Craig Avril
 Mr. and Mrs. Ronnie F. Luyun
 Mr. and Mrs. James W. Lynch
 Ms. Alice T. Lyon and Mr. Daniel Davies
 Mr. and Mrs. Scott N. MacGregor
 Mr. and Mrs. Don Madill
 Mr. and Mrs. Steve Magenta
 Ms. Elizabeth Makelim
 Ms. Mary E. Mako
 Alexandra Margo Malos
 Mr. and Mrs. Dean Mamalakis
 Ms. Susan Maneck and Mr. Martin W. Manek
 Mr. and Mrs. John Mangel III
 Mr. and Mrs. Richard J. Manietta
 Mr. and Mrs. John Mansour
 Mr. and Mrs. Jeffrey S. Mantia
 Mr. and Mrs. James Manz
 Mr. and Mrs. Thomas J. Manzardo
 Ms. Kathleen Marada and Mr. Nick Lewis
 Mr. and Mrs. Ira Marcus
 Mrs. Cynthia Mark-Hummel and
 Mr. John Hummel
 Mr. and Mrs. David Markovitz
 Mr. and Mrs. McKim Marriott
 Mr. and Mrs. Kenneth Marshall
 Ms. Darcy Martin
 Mr. and Mrs. Rodolfo Martin
 Todd and Erika Martin
 Mr. and Mrs. David A. Martinet
 Dr. Marco Martinez and Dr. Susan Martinez
 Ms. Judith Marx Golub
 Ms. Linda T. Mascorro and Mr. Gerald Grych
 Mr. and Mrs. John Massey
 Mr. John R. Masters and Ms. Carmella Cottonaro
 Mr. and Mrs. James R. Mather
 Mr. and Mrs. James Mathews
 Ms. Michelle Mathiesen
 Mr. and Mrs. Alan Matson
 Mr. and Mrs. Giovanni Matteis
 Mr. Wesley D. Matthews and
 Mrs. Viviana Matthews
 Dr. Julie L. Mattson and Dr. Richard A. Mattson
 Mr. and Mrs. George A. Matwyshyn
 Mr. and Mrs. Charles Mauter
 Mr. and Mrs. Michael D. Maves
 Mr. and Mrs. Charles M. May
 Mr. and Mrs. Christopher May
 Heidi and Gregory Mayer
 Ms. Teresa P. Mayfield
 Mr. and Mrs. Henry H. Maze
 Mr. Raymond Mc Bride
 Mr. and Mrs. Steven D. Mc Cormick
 Mr. Joseph E. Mc Donald and
 Ms. Madeleine Raymond
 Mr. Danny R. McArdle and Mr. Doug McArdle
 Mr. John McCartan
 Mr. William J. McCarter
 Mrs. Michelle McCarthy
 Mr. and Mrs. Mark J. McCarville
 Mrs. Julianne McCauley and Mr. Marc Lipinski
 Mr. and Mrs. Paul R. McClure, Jr.
 Mr. and Mrs. John N. McConnell
 Ms. Deirdre McCoy
 Mr. Stuart A. McCrary and Ms. Nancy L. Davis

Mr. and Mrs. Michael McCullough, Jr.
 Ms. Nancy A. McDaniel
 Mrs. Sherry L. McFall and
 Mr. Kenneth J. Porrello
 Ms. Lois M. McGoughran
 Mr. John E. McGovern III
 Lynn and Anthony (Tony) McGuire
 Mr. and Mrs. G. Thomas McKane
 Ms. Mary McLaughlin
 Ms. Susan A. McLaughlin and Mr. Alan H. Rebar
 Pat McMahon and L. W. McMahon-Padolski
 Mr. and Mrs. Alan G. McNally
 Ms. Alisa McQueen and Mr. Peter Lio
 Mr. Richard J. Medina and Ms. Maria T. Galo
 Mr. and Mrs. James Meehan
 Ms. Judith M. Meek and Ms. Nancy Wardrope
 Mr. John M. Meeks
 Ms. Claretta F. Meier
 Mr. and Mrs. James R. Meindl
 Mrs. Sarah J. Meisels
 Mr. and Mrs. Douglas Melching
 Mr. and Mrs. Thomas J. Meldrum
 Mr. Apolinar Mendoza and Ms. Dalia Ramirez
 Mr. and Mrs. Ernesto Mendoza
 Mr. Simon R. Meredith and Ms. Frances E. Tuite
 Mrs. Margot T. Merrick
 Mr. Glenn E. Merritt
 Ms. Mary Sue Meshes
 Mr. and Mrs. David A. Meskan
 Ms. Heather L. Metz^
 Mrs. E. J. Metzdorf
 Mr. Kevin Metzner and Ms. Brittany Barber
 Ms. Anna T. Meyer
 Mrs. Beverly M. Meyer
 Ms. Karen M. Meyer
 Dr. and Mrs. Ernest E. Mhoon, Jr.
 Mr. Craig S. Michelsen
 Ms. Lee S. Mickus
 Mr. and Mrs. Brian C. Miller
 Mr. and Mrs. Charles Miller
 Mr. and Mrs. Christopher A. Miller
 Mr. Gary R. Miller
 Mr. and Mrs. James Miller
 Mr. and Mrs. Paul J. Miller
 Dr. and Mrs. Robert P. Miller
 Dr. and Mrs. Sheldon I. Miller
 Mr. Vernon A. Miller and Ms. Kathryn Tecza
 Ms. Victoria A. Miller
 Mr. and Mrs. Chris Mills
 Mr. James C. Mills and Ms. Lois S. Zoller
 Mr. Ahmed Mirza and Ms. Hanin Rayes
 Mrs. Kathleen A. Mittel and Mr. James R. Reich
 Dr. Michael E. and Mrs. Kathy Moats
 Ms. Miriam A. Mobley Smith
 Mr. and Mrs. Raymond L. Molina
 Mr. and Mrs. Thomas M. Monahan
 Sara and Tyler Mongerson
 Mrs. Virginia G. Monroe
 Mr. Jose Dennis A. Monteverde
 Mr. James R. Montgomery
 Mr. and Mrs. Cameron Monti
 Ms. Cynthia A. Moody
 Mr. and Mrs. Richard Moody
 Mrs. Frank J. Mooney
 Ms. Catherine A. Moore
 Mr. and Mrs. Douglas Moore
 Mr. and Mrs. Leon W. Moore

Mr. and Mrs. Gerald W. Moore
 Mr. and Mrs. Scott J. Moore
 Mr. and Mrs. George and Isela Morales
 Mr. and Mrs. Michael Moran
 Mr. Peter Moran
 Ms. Marilyn A. Morel
 Mr. and Mrs. Henry C. Morf
 Mr. and Mrs. Lawrence M. Morgan
 Mr. and Mrs. Donald Morich
 Mr. and Mrs. David D. Morimoto
 Mr. and Mrs. James D. Morris
 Ms. Patricia D. Morris
 Mr. and Mrs. Kerry Morrissey
 Mr. and Mrs. Paul Morsbach
 Ms. Sabrina R. Morton
 The Moser Family
 Vijai K. Moses and Dr. Raj Lartius
 George and Arlene Mosher
 Ms. Allison M. Moulton
 Ms. Cheryl E. Mounts and Ms. Carla Williams
 Mr. and Mrs. Bogdan Mroczkowski
 Ms. Barbara Mudloff
 Mr. and Mrs. Kurt M. Mueller
 Lisa and John Mueller
 Mrs. Sandra L. Mueller
 Ms. Maureen G. Mullally
 Ms. Joan L. Mullen
 Mr. and Mrs. Paul A. Mumford
 Mr. and Mrs. Raymond Munaretto
 Dr. and Mrs. Glenn H. Murakami
 Mr. and Mrs. Edward C. Murawski
 Mr. and Mrs. Guy B. Murdock
 Mr. and Mrs. James G. Murphy
 Mr. John C. Murphy, Jr.
 Mr. and Mrs. J. B. Murphy
 Shaun Murphy
 Mr. and Mrs. Stanley L. Murphy
 Mr. and Mrs. James Murray
 Mr. Terrence A. Murray
 Mr. Michael J. Murrin
 Mr. and Mrs. James W. Myers
 Mr. and Mrs. Michael Myers
 Ms. Patricia C. Myers
 Mr. and Mrs. Ferdinand C. Nadherny
 Mr. Jerry A. Nagles
 Mr. and Mrs. Mark C. Nagy
 Mr. and Mrs. Kenneth P. Jones
 Mrs. Shirley Naples
 Ms. Carolyn E. Nasheim
 Mr. and Mrs. Thomas Navta
 Linda and Phil Neal
 Ms. Ellen J. Neely and Mr. Jeffrey S. Arnold
 Ms. Mary A. Nelson
 Mr. and Mrs. Neil C. Nelson
 Mr. and Mrs. Charles J. Nelson
 Mr. and Mrs. Robert Nelson
 Mrs. Ann M. Neumann
 Mr. and Mrs. Jonathan B. Newcomb
 Ms. Marjorie Newman
 Mr. Oscar Newman and Ms. Theo Ann Lesczynski
 Mr. and Mrs. Terry Newton
 Dr. Anh T. Nguyen
 Ms. Gina Nicholas
 Mr. and Mrs. Richard Nichols
 Mr. William Nichols and Ms. Julia Parks
 Ms. Eleanor A. Nicholson
 Ms. Karen Nickelson

Mr. and Mrs. John Nicolette
 Mr. and Mrs. John R. Nielsen
 Mr. and Mrs. Zbigniew Niewdach
 Ms. Anne Nobles and Mr. David L. Johnson
 Mr. Raymond L. Nofstger and Dr. Tina Forchetti
 Mr. Marcos Nogues and Mrs. Valerie Nanaclarej
 Mr. and Mrs. Richard S. Nopar
 Dr. and Mrs. Gary L. Nordbrock
 Mr. and Mrs. Gilbert H. Nore
 Mr. and Mrs. John K. Notz, Jr.
 Mr. and Mrs. Robert Novak
 Ms. Marion Nowak and Mr. Terry Boyd
 Mr. and Mrs. Marcus J. Nunes
 Mr. Mark A. Oates and Ms. Elizabeth E. Lewis
 Mr. and Mrs. Mike Oberhaltzec
 Mr. and Mrs. Pablo Ochoa
 Mr. and Mrs. Neil O'Connor
 Dr. and Mrs. Piermaria Oddone
 Mr. and Mrs. Donald R. Oder
 Mr. and Mrs. William W. Oelman
 Mrs. Theresa B. Oleszkiewicz
 Ms. Lynn R. Olman
 Miss Marie E. Olsofka
 Mr. and Mrs. Jon D. Olson
 Mr. and Mrs. Norman Olson
 Mr. Steve Olson
 Mr. and Mrs. Theodore A. Olson
 Mr. Tod A. Olson and Ms. Julie Stauffer
 Mr. and Mrs. Neil O'Mahony
 Mr. and Mrs. Robert Orr
 Mr. and Mrs. Dennis V. Osimitz
 Mr. Robert I. Osterberg
 Mr. and Mrs. James J. O'Sullivan, Jr.
 Mr. and Mrs. Elliott N. Otis
 Ms. Barbara E. Otte and Mr. Bruce C. Shelley
 Mr. and Mrs. Jay L. Owen
 Mr. and Mrs. Kevin Owens
 Dr. Lois R. Owens and Ms. Kimberly D. Owens
 Dr. and Mrs. David W. Oxtoby
 Mr. and Mrs. Raymond Paice
 Mr. Eric Nielsen and Ms. Ellen Papacek
 Mr. and Mrs. Michael Parfenoff
 Ms. Maria Paris and Mr. Rafael Sayagues
 Ms. Phyllis Parish



Ms. Cheryl Parker
 Mr. and Mrs. Robert D. Parks
 Mr. James D. Parsons
 Stanley Parzen and Lynn Raimondo
 Mr. and Mrs. Richard B. Paskin
 Mr. and Mrs. Rudy Patriarca
 Ms. Maureen Patrick
 Jim and Chris Patterson
 Mr. Scott Pattullo and Ms. Jenny A. Johnson
 Mr. and Mrs. Richard A. Paulus
 Ari and Zoe Paxinos
 Frank and Lola Payette
 Mr. and Mrs. Paul R. Payne
 Mr. and Mrs. Ronald Peabody
 Dr. David J. Peace and Ms. Karen Ferrer
 Mr. Frederic C. Pearson
 Mr. and Mrs. George Peinado
 Mr. and Mrs. Ray J. Pensinger
 Mr. and Mrs. Richard S. Pepper
 Mr. and Mrs. Brian Perez
 Mr. and Mrs. Philip Perkins
 Mr. Joel Perlin and Ms. Daiva Micutaite
 Dr. and Mrs. Lawrence Perlman
 Mr. and Mrs. Norman Perman
 Dr. Philip S. Perona
 Ms. Clarisse Perrette and Mr. Larry Freed
 Mr. and Mrs. David Perry
 Mr. Charles Peruchini
 Mr. and Mrs. Robert Pesci
 Mr. Ira J. Peskind
 Ms. Bonnie S. Peters
 Mr. James W. Peters
 Mr. and Mrs. Mark Peters
 Mr. and Mrs. Maurice R. Petersen
 Mr. and Mrs. Michael F. Petersen
 Mr. and Mrs. Dan Peterson
 Mr. and Mrs. Howard J. Peterson
 Mr. and Mrs. Kenneth W. Peterson
 Mr. and Mrs. Steve Peterson
 Mr. Verne Peterson and Ms. Julie Lipkin
 Mr. and Mrs. Jeffrey Pfluger
 Mr. David Phillips and Ms. Valerie Beech
 Mrs. Elizabeth B. Phillips
 Ms. Katherine Phillips
 Susan I. Phillips[^]
 Ms. Nella Piccolin
 Mr. and Mrs. Craig A. Pickenpaugh
 Mr. and Mrs. James Piechowski
 Ms. Barbara Piehler

Mr. and Mrs. Robert G. Pierce
 Mr. and Mrs. Henry T. Pietraszek
 Mr. and Mrs. Louis R. Pignotti, Sr.
 Mr. Jeffrey M. Pines and Ms. Mary E. Samerdyke
 Mr. and Mrs. Richard J. Pipala
 Mr. and Mrs. Robert E. Pivonka
 Ms. Kass Plain and Ms. Maureen Plain
 Mr. Gabriel C. Plebanski
 Mr. and Mrs. Charles F. Pleier
 Mr. Peter W. Plumley and
 Ms. Anna M. Rappaport
 Mr. George J. Polatty, Jr.
 Mr. Reid Poll
 Mr. and Mrs. Jay Pollitt
 Mr. and Mrs. Oren T. Pollock
 Betty and Tom Polonus
 Mr. and Mrs. Xavier Pombar
 Ms. Dana L. Pond
 Mr. William P. G. Potocek
 Mr. and Mrs. James Potter
 Dr. Charles A. Pounian
 Mr. and Mrs. Michael Powers, Sr.
 Mr. and Mrs. Paul C. Poy
 Margot and Robert Poznanski
 Ms. Guadalupe Prado
 Mr. Mark R. Pradzinski and Mr. David K. Haisch
 Mr. William C. Preston
 Mr. and Mrs. Robert L. Prezek
 Mrs. Sahalee Price and Mr. Brad Lee
 Dr. and Mrs. Richard A. Prinz
 Mr. William L. Pry
 Ms. Bernadine A. Prygrosky
 Mr. and Mrs. Joseph M. Przepiorka
 Mr. Alan J. Pulaski and Mrs. Jane C. Grady
 Mrs. Doris J. Puntney
 Mrs. Chestine Puralowski
 Mr. James L. Puralowski and Ms. Ruth A. Francis
 Mr. and Mrs. John F. Pustola
 Mr. and Mrs. Eric Quartetti
 The Quigley Family
 Mr. and Mrs. David Rabaja
 Mr. and Mrs. John Radzinski
 Ms. Victoria Rafatcz and Mr. David Miller
 Mr. and Mrs. Thomas Rafter
 Mr. and Mrs. Norman X. Raidl
 Mr. Richard W. Rakowski
 Miss Dorothy V. Ramm
 Ms. Lisa A. Ramos
 Mr. and Mrs. Glenn Randall



Mrs. Nancy V. Rascher
 Mr. and Mrs. Mark A. Ratner
 Ms. Lynne Rauscher-Davoust
 Dr. and Mrs. Matthew J. Raymond
 Mr. and Mrs. David Reese
 Mr. and Mrs. Mark E. Reeves
 Mr. and Mrs. Timo Rehbock
 Mr. Roger Reichard[^]
 Mr. and Mrs. Jeffrey R. Reid
 Mr. and Mrs. John B. Reilly
 Mr. and Mrs. Jeffrey A. Rein
 Dr. Mark S. Reiter and Dr. Kathleen A. Ward
 Mr. and Mrs. Charles A. Remsberg
 Dr. Sigrida Renigers and Ms. Astra M. Patrick
 Dr. Raiselle C. Resnick and Dr. Kenneth I. Resnick
 Mr. and Mrs. William Reyner
 Mr. and Mrs. Alejandro Reynoso
 Mr. Douglas P. Rhone
 Ms. Linda Richardson
 Mr. and Mrs. Jerald F. Richman
 Mrs. Marlene Richman
 S. Riemenschneider
 Mr. and Mrs. David Rigor
 Mrs. Patricia A. Riley
 Dr. and Mrs. Jerry N. Ringer
 Ms. Amy A. Ripepi and Mr. Garry J. Grasinski
 Mr. and Mrs. Steven A. Risley
 Mr. and Mrs. Roger Rives
 Bret Robertson and Yan Yang
 Mr. and Mrs. David E. Robinson
 Mr. and Mrs. Timothy M. Rockhill
 Mr. William B. Rodgers
 Mr. and Mrs. Ainars Rodins
 Jill and Ron Rohde
 Ms. Marilyn Rohn
 Mr. and Mrs. Robert Rolih
 Joshua and Nancy Rolock
 Ms. Elissa Roman and Ms. Dawn Roman
 Mr. and Mrs. Randall Roman
 Ms. Francesca Romano and Ms. Raffaella Riccelli
 Mr. and Mrs. Benjamin Rooks
 Mr. James Hennessey and Ms. Katie Rooney
 Ms. Denise D. Rose
 Mr. Jack H. Rosenberg and Ms. Anne L. Wieboldt
 Mr. and Mrs. Michael Rosenberg
 Mr. and Mrs. Neil Rosenberg
 Mr. and Mrs. John Rosenburg
 Mr. and Mrs. Jack Rosenfeld
 Mr. Anders R. Rosenquist
 Mr. and Mrs. Bernard Rosenstein
 Ms. Susan G. Rosenstein
 Robert and Marsha Rosner
 Mr. and Mrs. Robert J. Ross
 Mrs. Elizabeth D. Rothermel
 Mr. and Mrs. Gray Rothkopf
 Mr. Michael C. Rothman and
 Mrs. Bonnie F. Rothman
 Mr. Christophe Rouchon
 Mr. Phillip D. Rowe
 Mr. and Mrs. Pete Rub
 Ms. Roberta H. Rubin
 Ms. Lynn M. Rubino
 Ms. Carol Ruda and Mr. Norm Hilgeudorf
 Mr. and Mrs. George T. Rummel
 Ms. Jennifer Rushing and Mr. Dan Kurowski
 Ryan Ruskin and Michael Andrews
 Mr. and Mrs. Dan Ryan

Mr. George Rykowski and Ms. Silvia Schmid
 Laura[^] and Steven Sadler
 Mr. and Mrs. D. Paul Sager
 Mr. and Mrs. Rick Saines
 Ms. Christina M. Sakowski
 Dr. and Mrs. Edwin C. Salter
 Dr. and Mrs. Paul W. Saltzman
 Ms. Nancy Sampson-Bach
 Mr. Richard H. Sanders
 Mr. and Mrs. Roger L. Sanders
 Mr. Norman L. Sandfield
 Ms. Mary Ann Sanford
 Mr. and Mrs. Robert M. Sanford
 Ms. Nancy Sans
 Mr. and Mrs. Zaheer Sardar
 Mr. and Mrs. Milan Saric
 Kenneth and Candice Saulsberry
 Mr. Peter F. Saunders and Ms. Patricia J. Larson
 Ms. Maureen Sauser
 Mr. and Mrs. Fred Savaglio
 Mr. and Mrs. Graham Sayers
 Ms. Vera Scekcic and Mr. Robert C. Osborne
 Mr. and Mrs. Peter Schaefer
 Ms. Alice D. Schaff
 Ms. Roberta Schaffner
 Mr. Steve Schaumberger
 Mr. and Mrs. Terry G. Schechner
 Mr. Geoffry Schiciano and
 Mrs. Amy Movitz-Schiciano
 Mr. and Mrs. David M. Schiffman
 Mr. and Mrs. Timothy J. Schilling
 Dr. and Mrs. Richard L. Schilsky
 Mr. and Mrs. Robert G. Schloerb
 Mr. and Mrs. Nathan Schloss
 Mr. and Mrs. Richard J. Schlott
 Mr. and Mrs. David L. Schlotterback
 Ms. Susan D. Schlough and
 Mr. Andrew D. Abbott
 Mr. and Mrs. Fred Schmidt
 Ms. Patricia Schmidt
 Mr. Richard C. Schmitt and
 Mrs. Corinne R. Fargo-Schmitt
 Mr. and Mrs. Arthur Schneider
 Mr. Michael J. Schneider
 Mr. and Mrs. Richard Schreiber
 Mr. Grant Schreiber
 Mr. and Mrs. Brian Schroeder
 Mr. and Mrs. Paul W. Schroeder
 Mr. David L. Schultz
 Mr. and Mrs. Gerald Schultz
 Mr. and Mrs. Paul H. Schultz
 Mr. and Mrs. Paul J. Schultz
 Dr. and Mrs. Peter F. Schultz
 Mr. Craig R. Schuttenberg and
 Ms. Colleen M. O'Leary
 Mr. and Mrs. James L. Schwartz
 Mr. and Mrs. John D. Schwartz
 Mr. Melvin M. Schwartz and
 Ms. M. Lisa Yaremko
 Mr. and Mrs. Maurice Schwartz
 Mr. and Mrs. John A. Schweig
 Mr. and Mrs. Stevan F. Schweighardt
 Mr. and Mrs. Mark Schweitzer
 Mr. and Mrs. Ronald K. Schwuchow
 Ms. Margaret F. Scott
 Ms. Nadine Scully
 Ms. Muriel L. Sealy

Dr. Pamela Seaman and Mr. John Seaman
 Mr. and Mrs. Dennis Searles
 Ms. Barbara Sedivec
 Mr. Kenneth R. Seeskin and
 Ms. Bronna L. Wasserman
 Mr. and Mrs. Dennis Sejut
 Mr. and Mrs. T. Dwaine Sell
 Mr. and Mrs. John F. Serratelli
 Mr. and Mrs. Chris L. Seth
 Mr. and Mrs. Rama Shankar
 Mr. Owen J. Shapiro and Ms. Elisabeth Rose
 Mr. and Mrs. John A. Shaw
 Ms. Jeanine M. Sheehan
 Ms. Kate M. Sheehy
 Mr. and Mrs. Charles Shenk
 Ms. Mary Louise Shenk
 Mr. David N. Sheppard
 Mr. and Mrs. R. Stratford Shields
 Mr. James V. Shipp and Ms. Nancy Marie Casper
 Mr. and Mrs. George H. Shorney
 Mr. and Mrs. Dean Short
 Mr. and Mrs. Duward F. Shriver
 Alissa and Jonathan Shulkin
 Ms. Carole E. Shulman



Mr. and Mrs. Douglas L. Shuman
 Ms. Bette H. Sikes
 Mr. and Mrs. Alan H. Silberman
 Mr. and Mrs. Alex Silbey
 Bernardo and Christine Silva
 Mr. Andrew B. Simmons and
 Mr. Mitchell Loewenthal-Grassini
 Ms. Ilene Simmons
 Mr. and Ms. William A. Simmons
 Mr. and Mrs. Eugene L. Simpson
 Mr. and Mrs. Michael Simpson
 Mr. and Mrs. Abhijeet Singh
 Mr. and Mrs. Fred Sivils
 Ms. Jody M. Sivy
 Ms. Carol B. Skala
 Mr. and Mrs. Michael P. Skiersch
 Mrs. Jennifer Slate and Mr. Jianfeng Hong
 Ms. Maureen M. Slavin
 Mr. and Mrs. Charles F. Small, Jr.
 Mr. and Mrs. Gerald W. Smith
 Mr. and Mrs. Thomas C. Smith
 Mr. Jack Smith and Ms. Debbie Ramirez
 Mr. and Mrs. Lee M. Smith
 Dr. and Mrs. Lewis J. Smith
 Ms. Mildred R. Smith
 Mr. Timothy D. Smith and Ms. Lynne A. Taylor
 Mr. and Mrs. Robert Solomon
 Mr. and Mrs. Ron Sonenthal



Mr. Donald Southworth and
Ms. Marilyn Cantisano
Mr. Shawn Spagnoli and
Ms. Ann Krause
Mr. and Mrs. Patrick Spain
Mr. and Mrs. David Spak
Mr. Paul P. Spanier
Ms. Sharon E. Spanogle
Mr. and Mrs. John M. Specia
Mr. Michael J. Spence
Mr. and Mrs. William Spielberger
Mr. Norman F. Spielman
The Spiess Family
Mrs. Karen Spivey
Mr. and Mrs. Albert W. Spranger
Mrs. Carol Ann Springer and
Mrs. Rebecca Bogacz
Mr. and Mrs. William Springer
Ms. Constance M. St. Angel
Mr. and Mrs. Paul F. Stack
Bill and Orli Staley
Mr. and Mrs. Keith R. Stanley
Mr. and Mrs. Ron Stark
Mr. and Mrs. Leon C. Stecher
Mr. and Mrs. Ronald Steen
Mr. and Mrs. Kurt J. Steib
Mr. and Mrs. Allan R. Steinberg
Dr. Stephen T. Steiner and
Ms. Teresa L. Poggenpohl
Ms. Deborah J. Stephen and Mr. Jim Turco
Mr. and Mrs. Robert Stephens
Mr. and Mrs. Charles M. Stern
Mrs. Doris F. Sternberg
Mr. and Mrs. Michael J. Steurer
Mr. and Mrs. Donald M. Stewart
Mr. and Mrs. John Stewart
Mr. and Mrs. Kevin Stineman
Ms. Janet A. Stiven and Mr. Bernard G. Seewald

Mr. and Mrs. John Stocchetti
Mr. and Mrs. Howard L. Stocker
Mr. and Mrs. W.C. Stocker
James and Pamela Stola
Mrs. Harriet C. Stone
Ms. Joyce M. Stoops and Ms. Marlene F. Stoops
Ms. Marcia D. Stratsinsky
Mr. James R. Streicker and
Mrs. Mary W. Stowell
Mr. and Mrs. John J. Streit
Mr. and Mrs. Jason Suarez
Mr. and Mrs. Glen C. Suda
Mr. and Mrs. Howard Sulkin
Mr. and Mrs. John B. Sullivan
Mr. Kevin Sullivan and Ms. Catherine Forster
Ms. Margaret Sullivan
Thomas and Cameron Sullivan
Gregg and Julie Sunday
Dr. Susan Suntay and Ms. Stephanie Suntay
Ms. Nancy W. Sutherland
Mr. and Mrs. Harold Sutton, Jr.
Ms. Sarah Sutton and Mr. William Solar
Mr. and Mrs. Hobart K. Swan
Mr. and Mrs. Edwin L. Swanson
Ms. Linda J. Swanson
Ms. Loretta B. Sweeney
Mr. J. Roger Swihart
Ms. Megan Synenki
Dr. and Mrs. Jan P. Szidon
Ms. Diane Talbot and Mr. Alex Wiggins
Mr. and Mrs. Ralph Tamura
Mr. and Mrs. Robert J. Tangorra
Mr. Harry Tankus
Mr. and Mrs. Rich Tartol
Mr. Kevin Taylor
Mrs. Wendy Taylor and Ms. Carol Strubel Krimm
Mr. Steven F. Tempel and Ms. Deborah Zekich
Mr. and Mrs. Ronald Tesarik

Mr. and Mrs. Richard T. Teutsch
Mr. and Mrs. Richard J. Thennes
Mr. and Mrs. Travis Thetford
Ms. Kathy Tholin and Mr. Steve Starr
Mr. and Mrs. Jason Thomas
Ms. Alexis A. Thompson
Monica and Kevin Thompson
Mr. Robert L. Thompson
Ms. Sandra J. Thompson
Dr. and Mrs. David C. Tiemeier
Ms. Beverly Timm
Mr. and Mrs. Tobias Timm
Mr. Scott Tindale and Ms. Rogene Tubman
Dr. Margaret Tinzmann and Mr. Otto Tinzmann
Ms. Virginia Tolk
Mr. C. Steven Tomashefsky and
Ms. Rebecca A. Sive
Mr. and Mrs. Wm. Ronald Tomecko
Mr. and Mrs. James M. Trapp
Dr. and Mrs. Michael R. Treister
Thomas and Merle Tresser
Mr. and Mrs. Barton G. Tretheway
Mr. and Mrs. David E. Trevvett
Mr. and Mrs. John Trofa
Mr. and Mrs. Thomas G. Tromiczak
Ms. Mary Trowbridge and Mr. William West
Ms. Nancy Trumbull
Mr. and Mrs. Stanford K. Tsugawa
Mr. and Mrs. John E. Tulley
Mr. and Mrs. Glen E. Tullman
Mr. Adam Tumas, Jr.
Mr. and Mrs. Dominic P. Turchi
Mr. and Mrs. Donald D. Turk
Mr. and Mrs. Donald Turner
Mrs. Elizabeth K. Twede
Mr. and Mrs. Daniel Tye
Mr. and Mrs. David Ulm
Mr. and Mrs. Michael E. Unetich

Mr. and Mrs. Michael Urbik
 Mr. and Mrs. James Valley
 Mr. Robert C. Vallone
 Mr. and Mrs. Craig D. Vallorano
 Mr. and Mrs. J. V. Van Cura, Jr.
 Julia and Errett Van Nice
 Ms. Melody A. Van Wermeskerken
 Ms. Marie Vanagas
 David and Patricia Vance
 Mr. John M. VanderLinden and
 Mr. John W. Butler
 Mr. and Mrs. Peter O. Vandervoort
 Ms. Tania L. Vargas
 Ms. Bernadine G. Vehrs
 Mr. and Mrs. Leonard M. VerVers
 Ms. Teresa Via-Reque
 Mr. and Mrs. John F. Vicha
 Mr. and Mrs. Randolph M. Videkovich
 Mr. and Mrs. Steven S. Viktora
 Ms. Colleen B. Vitkovich and Mr. Daniel E. Taylor
 Stephen J. Vivian and Tia M. Rains
 Mr. and Mrs. Volodka
 Mr. and Mrs. Richard A. Waichler
 Ms. Rosa E. Walke
 Mrs. Allison D. Walker
 Mr. and Mrs. George M. Walker
 Mr. and Mrs. Derek Wall
 Mr. and Mrs. Herschel D. Wallace III
 Mr. and Mrs. John H. Wallace
 Mr. Ronald J. Wallin and Ms. Whitney A. Parker
 Mrs. Marge Walls and Mrs. Cassandra Sawyers
 Mr. and Mrs. Delbert G. Walters
 Mr. and Mrs. Gary T. Walther
 Mr. and Mrs. Lawrence Walton
 Ms. Theresa L. Wareham
 Mr. and Mrs. Kurt Warning
 Mr. and Mrs. James R. Warren
 Mr. and Mrs. Scot E. Warren
 Ms. Laura S. Washington* and Mr. Michael
 William Richmond
 Ms. Lauren B. Watkins and Mr. Kevin D. Mc Kee
 Ms. Nanette Watson
 Ms. Rosalind Wattel
 Mr. and Mrs. K. Jay Weaver

Dr. Catherine L. Webb
 Mrs. Deborah S. Weber and Mr. George E. Ohlin
 Mr. Leonard L. Weber
 Mr. and Mrs. Andrew J. Weddig
 Mr. and Mrs. Lawrence Wegner
 Ms. Kathryn P. Weibel and Mr. Steve Freeman
 Mr. and Mrs. Ken Weiner
 Mrs. Carolyn H. Weinstein
 Mr. and Mrs. Jack Weisman
 Mary Weisman and James Weisman
 Mr. and Mrs. Steven A. Weiss
 Mrs. John A. Werhane
 Mr. and Mrs. David D. Wesselink
 Mr. and Mrs. Frederick D. Weston
 Mrs. Madelin M. Wexler
 Mr. Philip A. Whistler
 Mr. and Mrs. Bill White
 Mrs. Carolyn M. White
 Mr. Michael S. White
 Mr. Bennie E. Whiten, Jr.
 Dr. and Mrs. Jack M. Whitney III
 Ms. Cathy L. Wiemold
 Mr. and Mrs. Mark Wilcox
 Mr. and Mrs. Lawrence G. Wilcox
 Mr. and Mrs. James Wilkes
 Mr. and Mrs. George P. Williams
 Dr. and Mrs. David B. Williams
 Ms. Jeanette M. Williams
 Ms. Lois C. Williams
 Mrs. April R. Wilson
 Mr. and Mrs. Donald Wilson
 Reverend and Mrs. James M. Wilson
 Ms. Jen Wilson
 Ms. Marcia L. Wilson
 Mr. and Mrs. James R. Wimmer
 Ms. Susan E. Wing
 Ms. Sandra Winkler Hensley
 Mr. and Mrs. Gregory Wintroub
 Mr. and Mrs. James R. Wise
 Mr. Robert F. Wisniewski
 Mr. and Mrs. Arnold A. Witt
 Mr. and Mrs. Philip J. Woest
 Ms. Melanie R. Wojtulewicz
 Ms. Robin Wold

Ms. Nicole Woldenberg
 Carl Wolf and Jennie Sochon
 Dr. Anne R. Wolfe and Mr. Brian Kelley
 Mr. Larry J. Wolfe and Mrs. Linda Chapman
 Mrs. Kathleen M. Wolfersberger and
 Ms. Cheryl Wolfersberger
 Dorothy H. Wolff and Eric Wolff
 Mr. Edmund J. Wolff
 Mr. and Mrs. Freeman J. Wood, Jr.
 Nancy and John Wood
 Mr. and Mrs. Kenneth Wood
 Mr. Stephen Wood and Ms. Kathleen Arthur
 Mr. and Mrs. Robert Woodley
 Mr. L. J. Woods and Ms. Anne G. Hanley
 Mr. and Mrs. William P. Worden
 Ms. Patricia A. Worth
 Mr. and Mrs. Kenneth A. Wright, Jr.
 Mr. and Mrs. John Wulfers
 Mrs. Cathy Wulfram and Mrs. Maria Zahareas
 Mr. David S. Yablong
 Ms. Jane Yakushiji
 Mr. and Mrs. Darryl Yerrick
 Ms. Nancy Ying
 Ms. Sandra L. Yost
 Mr. Kenneth A. Youga
 Ms. Allison Young
 Mrs. Louise B. Young
 Mr. and Mrs. Ralph Young
 Owen and Linda Youngman
 Mr. and Mrs. Rudolph L. Zaar
 Mr. and Mrs. Daniel Zagorin
 Diane and Lawrence Zalusky
 Mr. and Mrs. Daniel Zapata
 Mr. and Mrs. Phillip C. Zarcone
 Ms. Barbara Zenner
 Mr. and Mrs. John T. Zick
 Mr. and Mrs. William B. Zigterman
 Mr. and Mrs. Jay H. Zimble
 Mr. and Mrs. Frederick N. Zimmermann
 Mr. and Mrs. John A. Zinnie
 Mr. and Mrs. Earl Zingraf
 Mr. and Mrs. Rich Zinselmeier
 Mr. and Mrs. John Zuffante
 Mr. Steve Zutovsky and Ms. Maureen Sweeney



Exhibitions

Bunce Island: A British Slave Castle in Sierra Leone was curated and made possible by Joseph A. Opala of James Madison University. Marae Gallery sponsored by Baker & McKenzie.

The Nature of Diamonds was organized by the American Museum of Natural History, New York, in collaboration with The Field Museum, Chicago; the Royal Ontario Museum, Toronto; and the Houston Museum of Natural Science. This exhibition was made possible by the generous support of The Grainger Foundation.

Mammoths and Mastodons: Titans of the Ice Age was organized by The Field Museum. Education Sponsor: Discover.

kip fulbeck: part asian, 100% hapa was organized by the Japanese American National Museum in Los Angeles, California, and was supported, in part, by the James Irvine Foundation. Sponsored by Baker & McKenzie.

RoboSUE: The T. rex Experience was created by The Field Museum, in collaboration with KumoTek Robotics, LLC and Kokoro Company LTD.

Climate Change was organized by the American Museum of Natural History, New York, in collaboration with The Field Museum, Chicago; the Abu Dhabi Authority for Culture & Heritage, United Arab Emirates; The Cleveland Museum of Natural History; Instituto Sangari, São Paulo, Brazil; Junta de Castilla y León, Spain; Korea Green Foundation, Seoul; Natural History Museum of Denmark, Copenhagen; Papalote Museo del Niño, Mexico City; and the Saint Louis Science Center. Sponsored by Exelon Corporation, Motorola Foundation, HSBC - North America, Jones Lang LaSalle, and Whole Foods Market.

Gold was organized by the American Museum of Natural History, New York in cooperation with The Houston Museum of Natural Science.

Travels of the Crow: Journey of an Indian Nation was organized by The Field Museum in consultation with the Crow Nation of Montana.

Lasting Impressions: Chinese Rubbings from The Field Museum was supported by The Elizabeth F. Cheney Foundation.

The Romance of Ants was organized by The Field Museum and was the inaugural exhibition of Straight from the Field, an ongoing series of innovative exhibitions highlighting the work of Field Museum scientists and researchers.

Portraits of Resilience was organized by Nordic Council of Ministers; Communities of Shishmaref, Panirtung,

Ummannaq, and Ungàrgga/Nesseby; The Embassy of Canada in Denmark; Government of Nunavut; Ummannaq Polar Institute; GoNorth; Land is Life; First Air; Constant Arts Society; Sammi Council. The Many Strong Voices program is coordinated by UNEP/GRID-Arendal and the Center for International Climate and Environmental Research – Oslo (CICERO).

Traditions Retold: Mexican Nativity Scenes was organized by The Field Museum, and is made possible with a generous gift from William Goldman.

Annual Report Committee

Jean Cattell, Graphic Design Director
Laura Biddle Clarke, Vice President Institutional Advancement

Narrative Writer

Steve Strohmeier, Foundation Giving Director

Editor

Randi Sluiter, Development Services

Graphic Designer

Gloria Chantell

PHOTO CREDITS

Cover © The Field Museum, GN91350_136d; Introductory Letter, 2010 Dan Rest; **p. 3** © The Field Museum, GN91337_351d, Photographer Karen Bean; **p. 4** upper left, The Field Museum, lower right, Mary Pat Barbarie; **p. 5** top inset, large photo 2010 The Field Museum/Alvaro del Campo, bottom inset © The Field Museum; **p. 6** © The Field Museum, GN91341_237Ad, Photographer John Weinstein, bottom © The Field Museum, GN91333_218d, Photographer Karen Bean; **p. 7** © The Field Museum, GN91311_24, Photographer John Weinstein, bottom photo © The Field Museum, GN91335_090d, Photographer John Weinstein; **p. 10** 2010 The Field Museum, Dr. John Wayne Janusek; **p. 11** © The Field Museum, GN91316_018Ad, Photographer John Weinstein; **p. 12** 2010 The Field Museum; **p. 13** © The Field Museum, GN91326_027d, Photographer John Weinstein; **p. 14** 2010 The Field Museum/Bill Parkinson; **p. 15** © The Field Museum, A114386_02d, Photographer John Weinstein, bottom photo © The Field Museum, GN91350_083d, Photographer John Weinstein; **p. 16** The Field Museum/Mary Pat Barbarie; **p. 17** © The Field Museum, GN91376_055d, Photographer John Weinstein; **p. 18** © The Field Museum, GN91341_227d, Photographer John Weinstein; **p. 19** 2010 Dr. Ken Angielczyk; **p. 21** © The Field Museum, GN91352_444d, Photographer John Weinstein; **p. 22** The Field Museum/Dr. Larry Heaney; **p. 23** © The Field Museum, GN91320_121d, Photographer John Weinstein; **p. 24** © The Field Museum, GN91359_041d, Photographer Karen Bean, bottom right 2010 The Field Museum, Dr. Ken Angielczyk; **p. 25** © The Field Museum; **p. 26** © The Field Museum/Donna Resetar; **p. 27** © The Field Museum, GN91337_334d, Photographer Karen Bean, bottom © The Field Museum, GN91365_35d, Photographer John Weinstein; **p. 28** © The Field Museum/Donna Resetar; **p. 29** © The Field Museum, GN91341_295d, Photographer John Weinstein; **p. 31** © The Field Museum, GN91385_25Ad, Photographer John Weinstein, bottom © The Field Museum, GN91350_144Bd, Photographer John Weinstein; **p. 32** © The Field Museum, GN91347_166d, Photographer Karen Bean; **p. 33** © The Field Museum, GN91326_171d, Photographer John Weinstein; **p. 34** 2010 The Field Museum/Linda Nichols; **p. 35** 2010 The Field Museum/Mary Pat Barbarie; **p. 37** 2010 The Field Museum, © The Field Museum, A114521_01d, Photographer John Weinstein; **p. 38** © The Field Museum, GN91326_031d, Photographer John Weinstein; **p. 39** © The Field Museum, GN91365_23d, Photographer John Weinstein; **p. 40** © The Field Museum, GN91359_091d, Photographer Karen Bean.

All questions or inquiries regarding The Field Museum's 2010 Annual Report should be directed to Mary Pat Barbarie, Institutional Advancement at mpbarbarie@fieldmuseum.org

The Field Museum thanks the people of Chicago for their long-standing, generous support of the Museum through the Chicago Park District. In addition, Museum programs are partially supported by a CityArts Program 4 Grant from the City of Chicago Department of Cultural Affairs and the Illinois Arts Council, a state agency.

2010 Annual Report © The Field Museum
All rights reserved.