

FIE
MUSEUM
LD.



ANTARCTIC DINOSAURS

A New Traveling Exhibition

EXHIBITION DETAILS

SIZE: 7,500 Sq Ft

TOUR: Launches summer 2019

RENTAL FEE: \$275,000 USD for 12-week hosting

CONTENT SPECIALISTS:

- Pete Makovicky, PhD., Lead Curator, The Field Museum
- Nathan D. Smith, Ph.D., Associate Curator, Natural History Museum of Los Angeles County
- A combined group of scientists from Augustana College, the University of Washington, the University of Alberta, and the Iziko South African Museum

EXHIBITION PARTNERS:

- Discovery Place, Charlotte
- The Natural History Museum of Los Angeles County
- The Natural History Museum of Utah



MAIN CONTENT MESSAGES

- Though Antarctica today is a forbidding **land of snow and ice** with life clinging to its shoreline, 200 million years ago it was part of the supercontinent **Gondwana**, a wooded, lush habitat where **dinosaurs thrived**.
- Never-before-seen **fossils** reveal a rich history of **diversity** on the “Lost Continent,” and shed new light on our planet’s ever-changing **climate and geology**.
- *Antarctic Dinosaurs* will take the form of a dramatic **adventure**, in which visitors will get an up-close look at the harrowing logistics and excavation work as scientists **uncover remarkable fossils** from one of the most **isolated environments** on Earth.



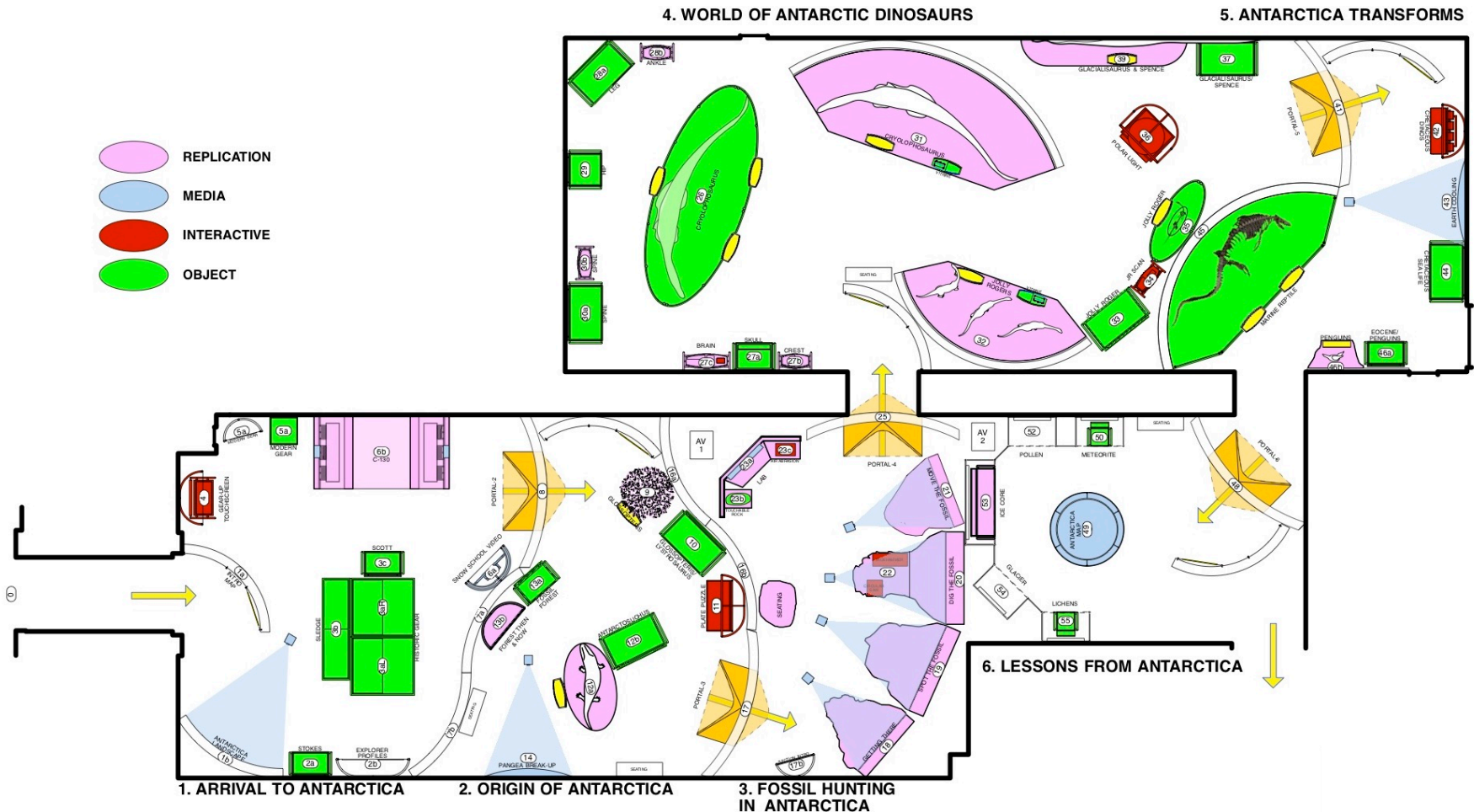
HOW WE'LL TELL THE STORY

- ✦ Consortium of scientists and museum partners
- ✦ 40–50 specimens and fossils, and field equipment from the doomed Scott Expedition
- ✦ 15 immersive models, replications, and touchable elements
- ✦ 5 large-scale media programs
- ✦ 12 mechanical and digital interactives
- ✦ Custom soundscape and lighting elements
- ✦ Bilingual design (English & Spanish translations provided)



EXPERIENCE MAP

A rich variety of experiences are laid out in a thoughtful **pacing** and designed for **modularity**.



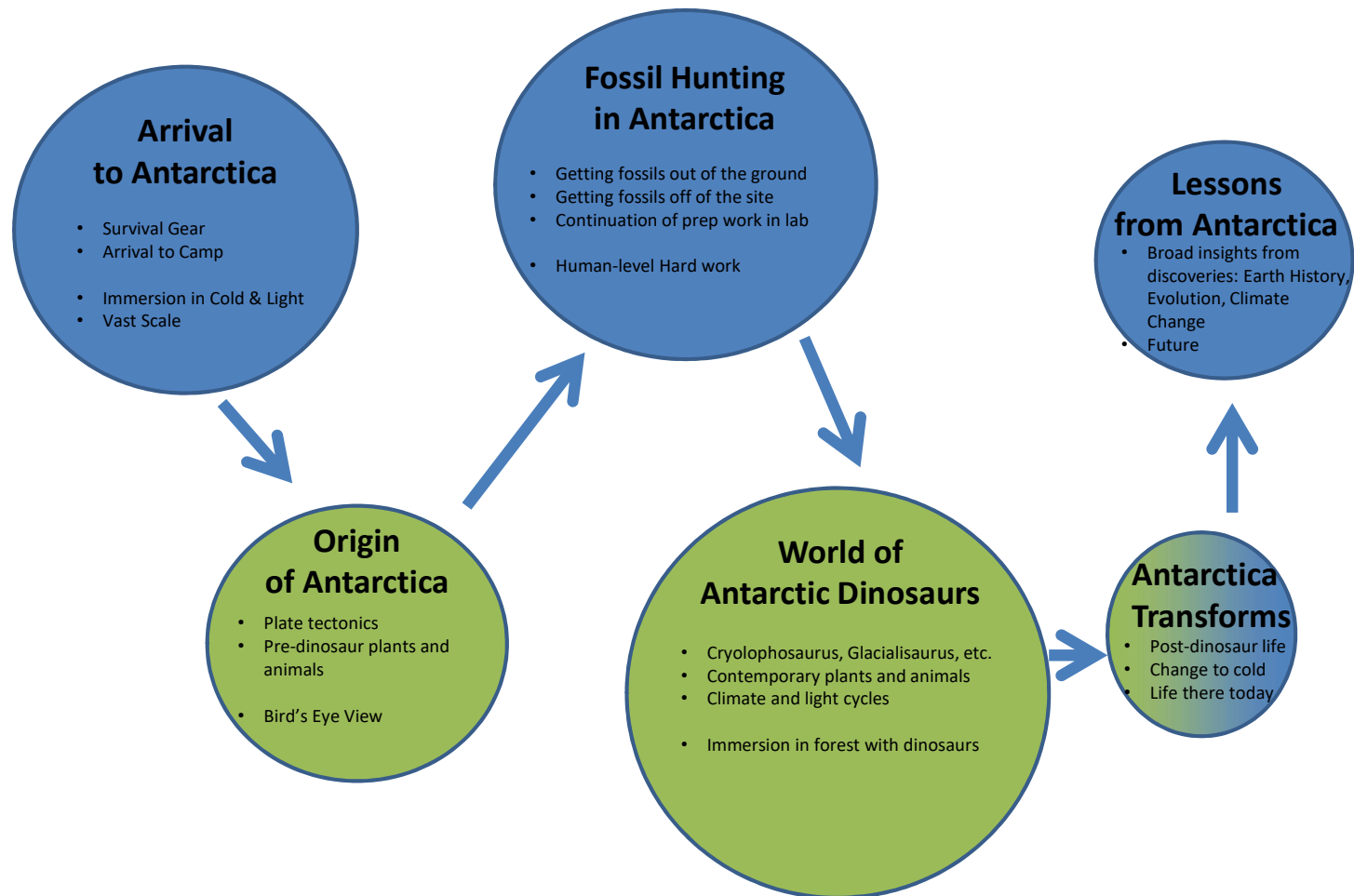
DESIGNERS' STATEMENT

Antarctica is a beautiful and remote place that few people get to experience. The goal of the exhibition design is to transport people to this harsh, mysterious landscape through immersive environments, images, lighting, sound, and smells. The adventurous spirit of polar expeditions inspires the design of the components, echoing the design vocabulary of outdoor gear and equipment. Visitors travel through time through pyramidal “portals” inspired by the iconic Scott tent still in use today. Specialty lighting reinforces the sense of time travel with contrasting summer “sunlight” for today with the winter “polar lights” for the distant past. Dynamic projection mapping of the excavation site, authentic fossil finds, robust tool interactives, and graphic novel storytelling allow you to join our dinosaur hunters on this epic adventure.



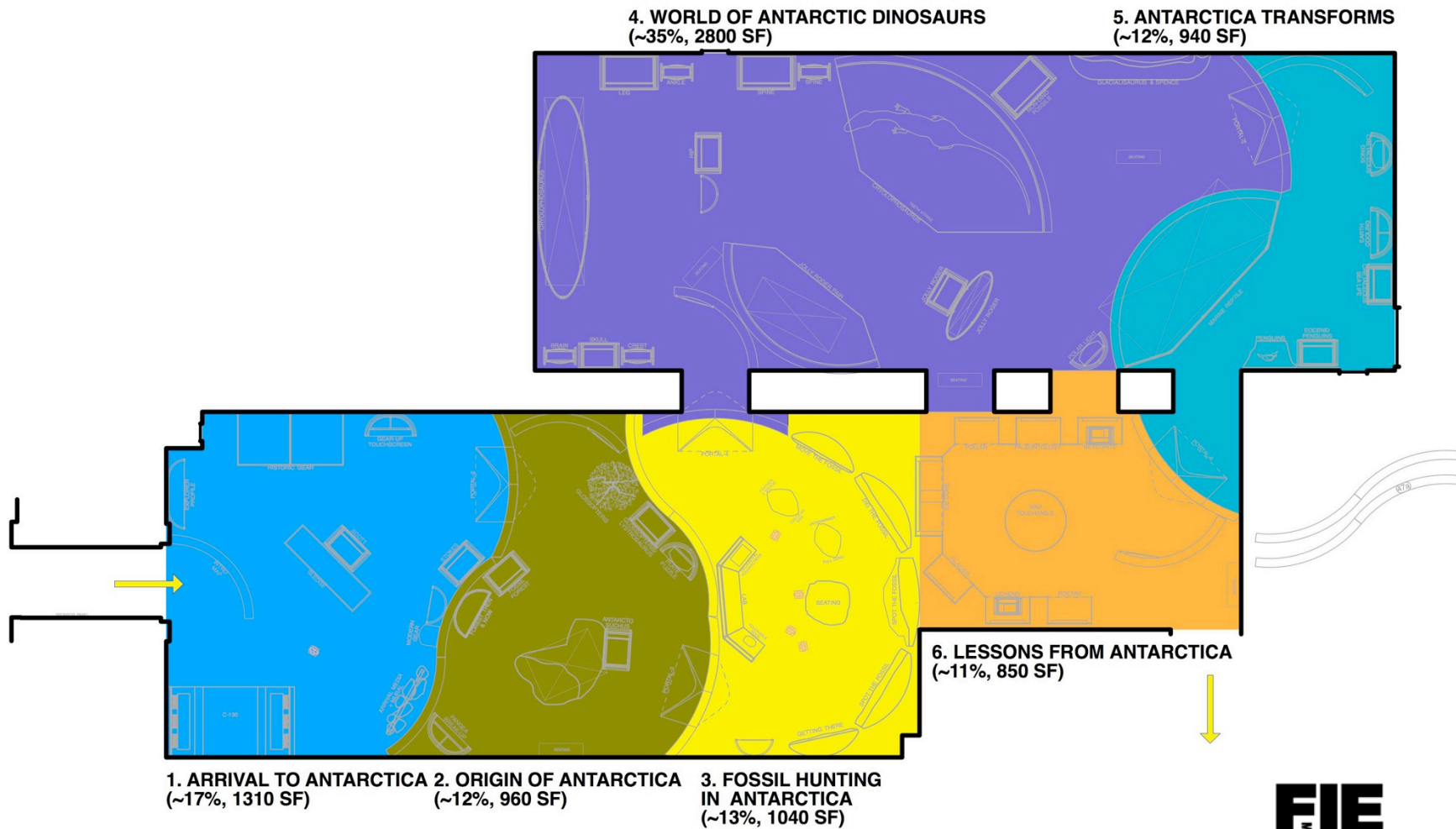
EXHIBITION BUBBLE PLAN

The following outlines the major **themes** and **tones** of each section of the exhibition.



CONCEPT FLOORPLAN

The following demonstrates the relative weight or **percentage** of each section within the **overall** exhibition **experience**.



SECTION 1: ARRIVAL TO ANTARCTICA

- Visitors will be transported to modern Antarctica: cold, blindingly bright, and vast in scale. They will start their journey to a harsh environment, following in the footsteps of explorers and scientists, from Captain Robert Falcon Scott to our exhibition curators.
- A comparison of camp life and the survival gear used during the Heroic Age of Antarctic Exploration and expeditions today will allow visitors to explore the persistent challenges of scientific excavation on the “Lost Continent.”
- Viewing a collection of the very first fossils ever discovered in Antarctica will give visitors the first hint (as they did for scientists a century ago) that Antarctica wasn’t always the frozen landscape we know it as today.



SECTION 1: ARRIVAL TO ANTARCTICA



IN THIS IMAGE: C-130 arrival experience and photo-op, multi-media projection showing arrival at McMurdo Station, Scott Expedition sled display case.

SECTION 2: ORIGINS OF ANTARCTICA

- Visitors will be brought far back in time to explore the forces—plate tectonics—that caused the supercontinent to break up into separate landmasses, and created Antarctica as Earth's southernmost continent.
- A display of Antarctic fossils—older than dinosaurs—next to the same extinct plants and animals from South America and Africa will offer evidence that these land masses had once been connected.
- A reconstructed forest will capture a scene from ancient Antarctica and will introduce visitors to the early plants and amphibians that thrived there when it was a lush environment warm enough to support such life.



SECTION 2: ORIGINS OF ANTARCTICA



IN THIS IMAGE: Custom light gobo, replicated Glossopteris tree and Antarctosuchus, Krostega fossil display case, Pangaea breakup interactive media, polar pyramid tent portal leading to Section 3.

SECTION 3: FOSSIL HUNTING IN ANTARCTIC

- Beyond merely surviving the harsh conditions, the gritty and taxing work of fossil hunting in Antarctica begins. While the use of power tools and helicopters allows scientists to excavate fossils from frozen rock, the basic challenges of working in one of the world's least hospitable environments are felt by researchers today just as they were by early explorers a century ago.
- Visitors will be transported to a modern quarry camp and get an up-close look at the arduous logistics of digging for dinosaur fossils. They'll try their hands at excavation techniques and touch real blocks of Antarctic matrix.



SECTION 3: FOSSIL HUNTING IN ANTARCTIC



IN THIS IMAGE: Replicated mountainside quarry and multi-media fossil hunting program, jackhammer and circular saw interactives, touchable stone from Antarctica with embedded fossils, polar pyramid tent portal leading to Section 4.

SECTION 4: WORLD OF ANTARCTIC DINOSAURS

- Visitors will ascend to Mount Kirkpatrick, also known as “Dinosaur Mountain,” where scientists have collected the first and largest Antarctic dinosaurs:

- ***Cryolophosaurus***: at 25 feet long and new to science, it is the largest and most complete Early Jurassic theropod in the world
- ***Glacialisaurus***: selected bones of this prosauropod help us to learn about the origins of later sauropod giants
- **“Jolly Roger:”** the nearly complete skeleton of a juvenile sauropodomorph

- Both fossils and large-scale reconstructions of several species situated in a forested landscape will immerse visitors in a verdant scene where dinosaurs and other contemporary creatures (pterosaurs and small mammal relatives) once thrived.



SECTION 4: WORLD OF ANTARCTIC DINOSAURS



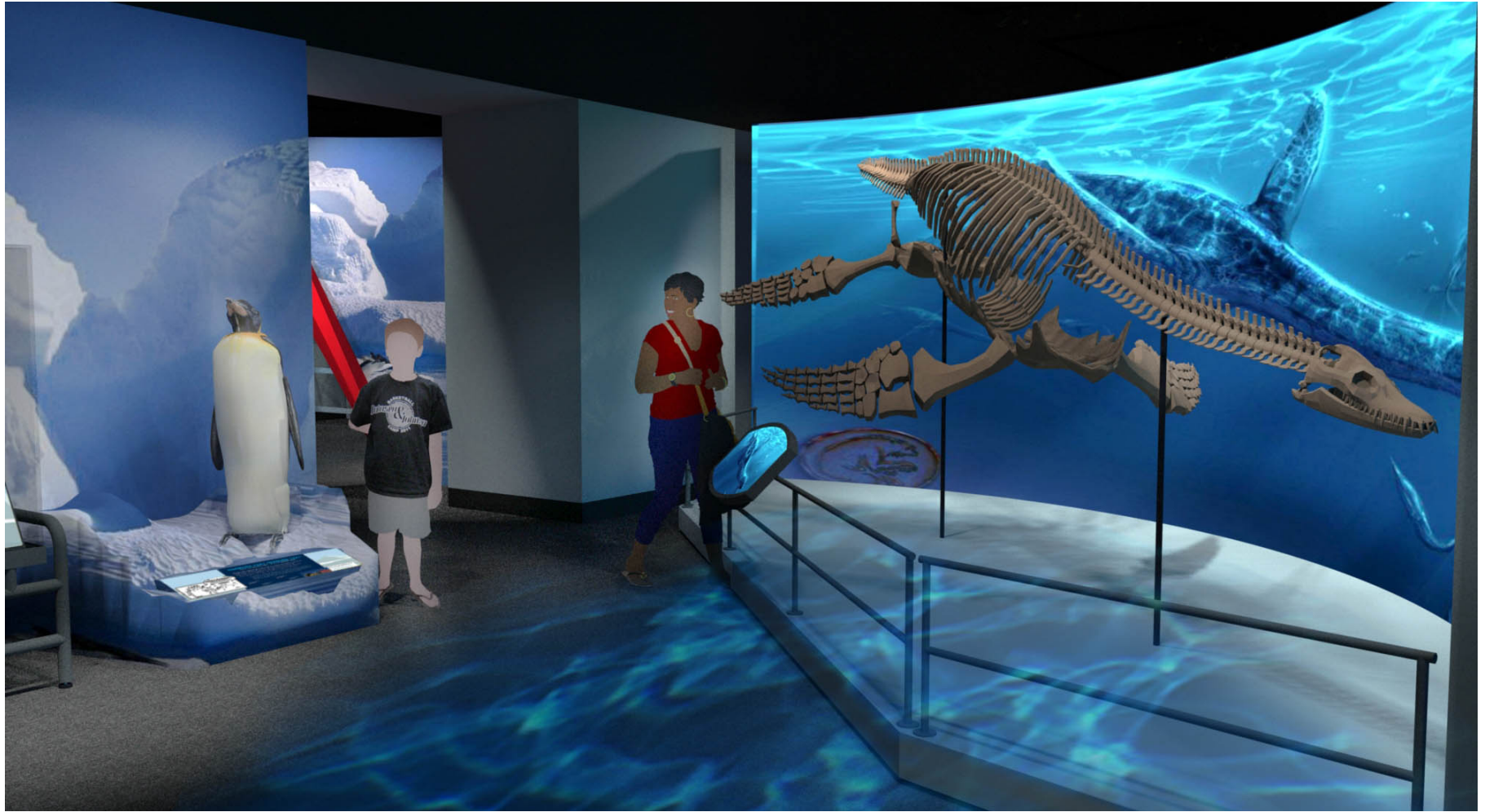
IN THIS IMAGE: Cryolophosaurus replication and fossil display, replicated Jolly Rogers and fossils, Dino Reveal mechanical interactive.

SECTION 5: ANTARCTICA TRANSFORMS

- Shifting from the warm Mesozoic Era through the cooling of Antarctica, visitors will explore the atmospheric mechanisms behind the continent's transformation to a polar environment.
- View rare and elusive evidence of species from this late and post-dinosaur period, and examine the fauna and flora that call Antarctica home today.



SECTION 5: ANTARCTICA TRANSFORMS



IN THIS IMAGE: Mounted Taniwasaurus cast skeleton, Emperor Penguin replication and photo-op, Eocene penguin and fish fossils display case.

SECTION 6: LESSONS FROM ANTARCTICA

- The breadth of Antarctic research extends well beyond the excavation of dinosaurs to include the study of the atmosphere, glaciers, meteorites, plants, and animals. The examination of Antarctic dinosaurs with these diverse disciplines sheds new light on past, present, and future climate transitions.
- How does the climate change Antarctica is experiencing today compare to those the continent has undergone for hundreds of millions of years?



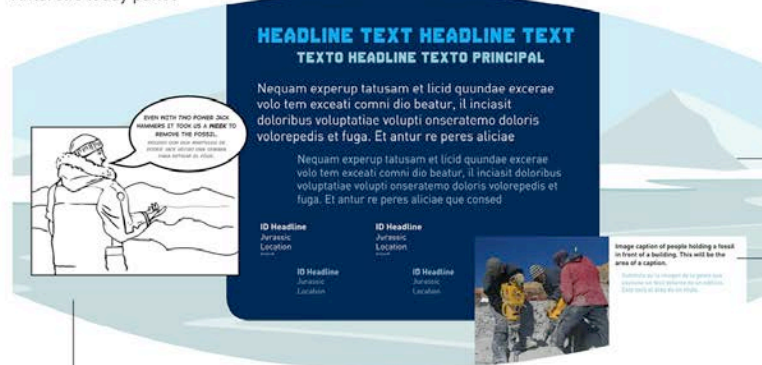
SECTION 6: LESSONS FROM ANTARCTICA



IN THIS IMAGE: Antarctica layered map narrative video, Antarctic lichens case, glacier info graphic, replicated ice core.

GRAPHIC DESIGN

Antarctic today panel



Reading panel samples

Simple landscape texture

Photo and caption

Header, body copy and ID text

Antarctic prehistoric past panel



Graphic novel illustration and dialogue

Material: Inkjet print with a 5 mil display flex lamination mounted on .25" sintra. All edges captured by frame

- Strong hierarchy makes content accessible to multiple learner levels
- Graphic novel illustration and dialogue convey a sense of adventure
- Bilingual layout and flexible graphics system (all text above is for placement only)

EXHIBITION TOUR

June 15, 2018 – January 6, 2019	The Field Museum, Chicago
June 1, 2019 – January 5, 2020	Natural History Museum of Los Angeles County Los Angeles, CA
February 8 – May 25, 2020	Discovery Place Charlotte, NC
June 27, 2020 – January 3, 2021	Natural History Museum of Utah Salt Lake City, UT
Spring 2021	AVAILABLE
Summer 2021	<i>Contract Pending</i>
Fall 2021	<i>Contract Pending</i>
Spring 2022	AVAILABLE
Summer 2022	AVAILABLE
Fall 2022	AVAILABLE
Spring 2023	AVAILABLE
Summer 2023	AVAILABLE

All dates are tentative until contracted.



FOR MORE INFORMATION

CONTACT:

Field Museum – Traveling Exhibitions Team

(001) 312.665.7036

travelingexh@fieldmuseum.org

