



Dear Friends,

Despite the unprecedented challenges we have collectively faced in recent years, 2021 represented a special milestone for the Field Museum. We celebrated the centennial of our famous lakefront home with unique opportunities to engage with Field Museum history and collections. Over the last 100 years, our magnificent building has welcomed nearly 137 million visitors, housed an irreplaceable and ever-growing collection, and supported scientific research that connects all of us to the natural world and the human story.

2021 also saw the completion of our ambitious *Because Earth* campaign. With exceptional support from donors like you, we raised \$316 million to sustain the Field's mission. Begun in 2015, *Because Earth* saw the creation of four centers of scientific excellence, the naming of key positions, major renovations of the public Museum (including new, permanent exhibitions), and healthy growth of the Museum's endowment.

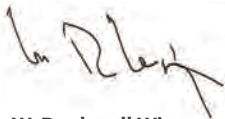
This year, we welcomed two new curators: Sara Ruane, PhD who specializes in snakes and Foreman Bandama, PhD who studies African anthropology and archaeology. Despite the uncertainty of travel in conducting global field work, our community of 140 scientists reached new levels of scholarship. They explored the historic links between climate change and extinction using specimens in our collection, pursued conservation initiatives at home and abroad, and discovered several new species!

We believe each object in our collection has a story to tell, and each visitor can embark on a journey of discovery at the Field Museum thanks to your generosity. You have ensured the future of the Museum as a place of scientific research and public learning, thank you.

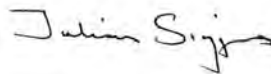
We are delighted to share stories of your Museum in this Annual Report to Donors, with gratitude for all you make possible at the Field.

Here's to a brilliant, new century of discovery in our lakefront home!

Sincerely,



W. Rockwell Wirtz
Chair, Board of Trustees
(2021-2024)



Julian Siggers, PhD
President and CEO



(On the cover) While red hair and fur comes from a pigment called pheomelanin, most birds acquire warm colors from molecules, called carotenoids, in the food they eat. As they metabolize berries, seeds, and other foods carrying carotenoids, pigment travels through the bloodstream and into their feathers.



DISCOVERY — 2



IMPACT — 14



HONOR ROLL — 26

DISCOVERY

820,000+

field guide
downloads by users
in 195 countries

228,079

new specimens
cataloged

130

ongoing research
projects

35

new species to
science described

The Field Museum supports the work of 140 staff scientists behind the scenes. Their leading-edge research fuels discovery for the global scientific community and Field's members, visitors, and young explorers. Your support enables them to explore the Earth, connect with its peoples, and care for the Museum's 40 million objects and specimens.



Fossil tail feathers tell a new story of evolution

Scientists recently described a new fossil bird, *Yuanchuavis kompsosoura*, whose tail is nearly twice the length of its body. Named for a mythological Chinese bird, *Yuanchuavis* was a species of an extinct group of birds (*pengornithid enantiornithines*) that lived 120 million years ago in northeastern China. The general shape of its tail is called a pin-tail, consisting of a fan of short feathers and a central pair of elongate 'pins.' In *Yuanchuavis*, the short fan aids flight, while the elongate pin feathers provide ornamentation. Understanding how sexual selection may have shaped ancient birds like *Yuanchuavis* could help us better understand bird diversity today.



(Left) The fossil of *Yuanchuavis* excavated from northern China.

Paleontologists recently discovered that pigment containing organelles (called melanosomes) can fossilize. Melanosomes extracted from *Yuanchuavis* suggest its tail fan was gray and the pins were black.

Scientists discover a forest unaltered for 5,000 years

More and more studies are suggesting that much of the Amazon forest was altered before the arrival of Europeans. Plenty of areas in the Amazon that look like “wilderness” today show evidence of ancient forest-clearing, agriculture, plant domestication, and road building.

Scientists in the Keller Science Action Center collected soil samples on two recent inventories in Peru and sent them to colleagues who study soil charcoal and phytoliths, or fossilized plant tissue that give researchers a snapshot of what plants existed in an area. Instead of showing large-scale ancient impact, the rapid inventory soils tell a 5,000-year story of populated, but relatively undisturbed, forests.

In other words, the sites visited by the Field's conservation team were not massively altered by the people living there during pre-Columbian times. So, for 5,000 years, the forest looked very similar to how it looks today—showing evidence that the people who live there know how to make a good life from the forest's resources without impoverishing them.

(Left) The rapid inventory team has spent many years studying the forests of Peru's Putumayo river basin.

35M+

acres of the Amazon
inventoried to date

9.8M

acres proposed as
new conservation
lands

\$1.3M

in new competitive
awards

273

articles published
by Field Museum
Scientists

Mystery plant from the Amazon declared a new species

In 1973, Field Museum Emeritus Robin Foster, PhD, stumbled on a strange tree in the Amazon rainforest that was unlike anything he'd ever seen. It was about 20 feet tall, with tiny orange fruit shaped like paper lanterns. He collected samples of the plant's leaves and fruit, but all the scientists he showed them to were not only unable to identify the plant as a species that had previously been described, but they couldn't even declare it a new species because the family it belonged to couldn't be determined. The mystery plant sat in the Field Museum's herbarium, for years, but Foster and his colleagues didn't forget about it. The team eventually received a grant from the Field Museum's Women's Board to study the plant. They analyzed the plant's DNA and discovered where it belongs in the taxonomy of trees, finally naming it *Aenigmanu alvareziae*, meaning "Mystery of Manu," after the park it came from in Peru.



(Above) A live specimen of
Aenigmanu alvareziae.

(Below, left) Specimens of sand shiner
fish in the Field Museum's collections
collected in 1972, 1953, and 1907.



Fish have been swallowing plastic since the 1950s

It takes centuries for plastic to break down, meaning nearly every piece of plastic ever made still exists in some form today. We've known for several years that large pieces of plastic, like grocery bags and six-pack rings, can harm wildlife. More recently scientists have discovered microscopic pieces of plastic in the water, soil, and even the atmosphere. To help provide historical context to this issue and learn how these microplastics have built up over the past century, Field Museum researchers examined the guts of freshwater fish preserved in the Museum's collections. They found that the amount of microplastics present in the fishes skyrocketed since the 1950s and continue to increase.

Whitespotted Bamboo shark located in Ripley's Aquarium of the Smokies, Raybay exhibition.

(Right) Whitespotted Bamboo shark, *Chiloscyllium plagiosum*, egg or also called a mermaid's purse is backlit.



How can we use science to save the sharks?

Over the past several decades, sharks have become threatened by overfishing, pollution, and global warming. Conservationists have implemented important global plans for several species, including designated marine protected areas and captive breedings. For sharks, captive breeding is in its infancy, especially compared to other vertebrates. Kevin Feldheim, PhD, A. Watson Armour III Manager of the Pritzker Lab, worked with colleagues from several American aquariums to explore the possibility of artificial insemination as a viable option for breeding aquarium sharks. Their efforts successfully produced pups in all inseminated females except two cases where the female sharks gave birth by parthenogenesis—virgin birth. The success of this project is a breakthrough for shark conservation because it will allow genetic diversity to flourish amongst sharks in aquaria without causing unnecessary stress to individuals.



Earth's largest extinction event took longer on land

Earth's worst mass extinction event happened 252 million years ago in the Permian Period when massive volcanic eruptions caused catastrophic climate change. The vast majority of animal species went extinct, giving rise to the Age of the Dinosaurs. But, scientists are still trying to understand how the event affected life in the oceans versus life on land. Because of a more complete fossil record, scientists know that 85% of species in the oceans went extinct within 100,000 years. To learn about what happened on land, Postdoctoral Researcher Pia Viglietti, PhD, and MacArthur Curator of Paleomammalogy Ken Angielczyk, PhD, examined 588 fossils of land animals that lived before, during, and after the extinction event. They discovered that the Permian extinction took nearly 10 times longer on land than it did in the ocean.

This project was supported by the Grainger Bioinformatics Center.

(Left) Pia Viglietti creating a plaster jacket around a fossil in South Africa's Karoo Basin. Fossils from this area were included in the study to better understand the end-Permian Extinction on land.



Welcoming two **new curators**

Sara Ruane, PhD

Sara Ruane joined the Field Museum in September as Assistant Curator of Herpetology. Her research focuses on snake evolution and systematics. "I'm interested in what generates the diversity we see in snakes," she said. "Despite having no legs, snakes fill every ecological niche. They inspire fear and fascination in humans but their ecological impact can't be overstated." Previously, Dr. Ruane served as an Assistant Professor of Biology at Rutgers University.

Foreman Bandama, PhD

The Field Museum welcomed Foreman Bandama as Assistant Curator of African Anthropology in September. Dr. Bandama has broad experience, from excavating ancient African cities to laboratory analyses of pottery, glass beads and metals, but he says all his work is driven by a unifying goal to highlight African achievements. Before coming to Chicago, he taught at Sol Plaatje University in Kimberley (Northern Cape Province), South Africa. He received his doctorate from the University of Cape Town, where he also worked as a postdoctoral researcher.

Hidden colors reveal **plant biodiversity**

As forests and habitats shrink and climates change, it's critical we develop more efficient methods for identifying and mapping biodiversity. This is especially important for plants because they are one of several large groups (like fungi, insects, and microorganisms) for which we still have rough estimates of the total number of species worldwide.

While DNA analysis is the gold standard for identifying and understanding biodiversity, it can take weeks—sometimes months—to produce and analyze DNA sequences. Scientists at the Field Museum have been working on a method to identify plant species in the field based on the differences in light reflected off their leaves. Using a camera-like machine called a spectroradiometer, scientists can produce the data needed to identify plants in just two seconds with 99.7% accuracy. They also discovered that they can identify hybrids and populations within a species, which is very important for conservation.

This project was supported by the Grainger Bioinformatics Center.



The underside of a *Dryas* leaf. All features of plants interact with light and provide information about a species' identity.

89,000+
specimens digitized
by 410 volunteers

19,430
citations of Field
Museum scholars

132
postdoctoral and
graduate students
advised

95
interns engaged
in all centers



Scientists double the number of **spotted skunk species**

Scientists know little about the smaller spotted cousins of the striped skunk, starting with how many kinds of them exist. Since the spotted skunks were first discovered in 1754, the number of recognized species has ranged from two to fourteen. Most scientists today agree that there are four species of spotted skunks. But in a new study, Field Museum scientists analyzed DNA from hundreds of specimens and found there are actually seven! The differences in DNA they found led the researchers to reclassify some of the skunks and resurrect several species names that hadn't been used in centuries.

Two new species of endangered screech owls discovered in the Brazilian rainforests

The South American rainforests rainforest is teeming with creatures unknown to science—including many nocturnal animals that have remained elusive to scientists. In a new paper in *Zootaxa*, Field Museum scientists and colleagues described two new species of screech owls that live in the Amazon and Atlantic forests, both of which are already critically endangered. The team analyzed 252 specimens, 83 tape recordings, and 49 genetic samples from across the range of the Tawny-bellied Screech Owl complex in South America. This analysis led them to describe two new species: the Xingu Screech Owl and the Alagoas Screech Owl.

The study illustrates how geographically diverse the Amazon and Atlantic forests are and highlights the need to protect more forests throughout these regions.



(Above) Lead author Sidnei Melo Dantas gathered genetic data in the Pritzker Lab at the museum for this study as part of his dissertation research.

(Right) Xingu Screech Owl, *Megascops stangiae* is named in honor of an American nun, Dorothy Stang who died fighting for the rights of the people and the forests of the Xingu Region.



Archaeologists found that the societies with the most wealth inequality were also the ones that had governments that concentrated power with a smaller number of people.



(Left) Former Field Museum Bass Postdoctoral Fellow (2020-2021) Amy Thompson, PhD, photographs the excavation of a Classic Maya house at Uxbenká, Belize.

(Below, left) Local Mopan Maya community members work alongside archaeologists, uncovering utilitarian artifacts used by the Classic Maya during the excavations of Classic Maya house at Uxbenká, Belize.



Wealth inequality tied to despotic government

Throughout history and across continents, there has always been some degree of wealth inequality. In a new study in *PLOS ONE*, archaeologists examined the remains of houses in ancient Maya cities and compared them with other Mesoamerican societies. They found that the societies with the most wealth inequality were also the ones with governments that concentrated power in a smaller number of people.

The link between wealth inequality and autocracy isn't exclusive to the Classic Maya, the researchers note. "There's a tight interconnection between how power is funded and how power is wielded and monopolized," said Gary Fienman, PhD, MacArthur Curator of Mesoamerican, Central American, and East Asian Anthropology. "People can and do establish institutions that try to check power, but it takes interpersonal interdependence and the recognition that we cooperate with communities of people beyond just one's self and one's family."



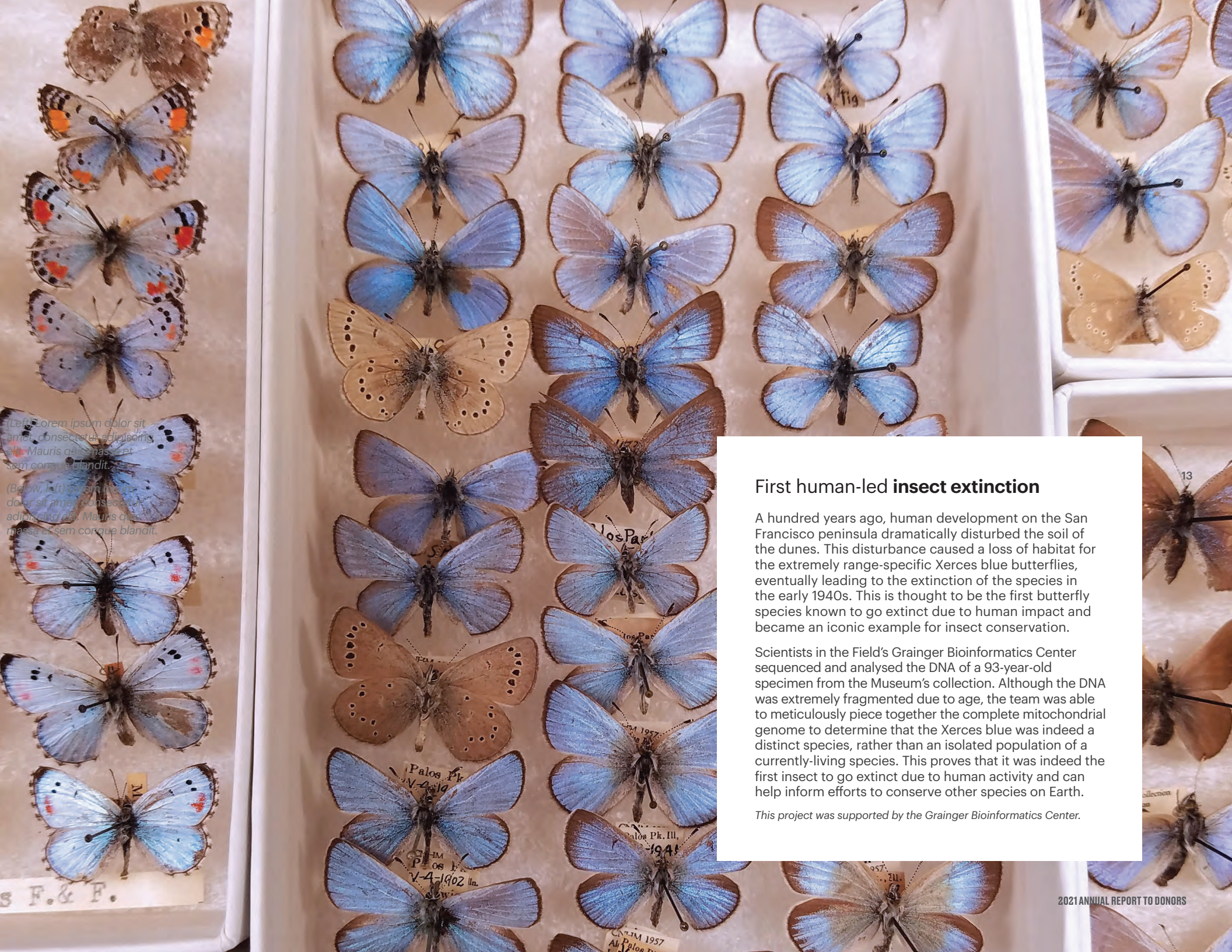
Recovering a species feared to be extinct

In June 1991, Mount Pinatubo in the Philippines erupted violently. Eight hundred people lost their lives, the lush tropical forest that had covered the mountain disappeared, and, in the following months, powerful typhoons triggered landslides that devastated farmland.

Twenty years later, as documented in a recent publication in the *Philippine Journal of Science*, members of the Field Museum's Philippine Mammal Project conducted a thorough survey of the mammals on Mount Pinatubo. Because the mountain was still mostly covered by ash fields, they expected native mammals to be all but gone. But the team learned that native mammals of all sizes were thriving. Most remarkably, a mouse known as *Apomys sacobianus*, (previously known from a single specimen captured in 1956 on Pinatubo) was the most abundant mammal on the mountain. As a rare species on a tropical island subject to a catastrophe, many scientists thought the mouse was extinct.

(Left) The June 12, 1991 eruption column from Mount Pinatubo taken from the east side of Clark Air Base

(Above) The Pinatubo volcano mouse, *Apomys sacobianus*.



(Left) orem ipsum dolor sit
amet, consectetur adipiscing
elit. Mauris quis massa, et
sem congue blandit.

(Below, left) orem ipsum
dolor sit amet, consectetur
adipiscing elit. Mauris quis
massa, et sem congue blandit.

S. F. & F.

First human-led insect extinction

A hundred years ago, human development on the San Francisco peninsula dramatically disturbed the soil of the dunes. This disturbance caused a loss of habitat for the extremely range-specific Xerces blue butterflies, eventually leading to the extinction of the species in the early 1940s. This is thought to be the first butterfly species known to go extinct due to human impact and became an iconic example for insect conservation.

Scientists in the Field's Grainger Bioinformatics Center sequenced and analysed the DNA of a 93-year-old specimen from the Museum's collection. Although the DNA was extremely fragmented due to age, the team was able to meticulously piece together the complete mitochondrial genome to determine that the Xerces blue was indeed a distinct species, rather than an isolated population of a currently-living species. This proves that it was indeed the first insect to go extinct due to human activity and can help inform efforts to conserve other species on Earth.

This project was supported by the Grainger Bioinformatics Center.

IMPACT

440,000+

students and families
served by Learning
Center programs

8,272

people engaged in
conservation action in
the Chicago Region

4,000+

native plants distributed
to Chicago communities

782

students engaged
in virtual and on-site
summer camps

The Field Museum connects all of us to the natural world and the human story. Through world-class exhibitions, community outreach, and educational programs, the Field shares science, supports communities, and trains the next generation of scientists.



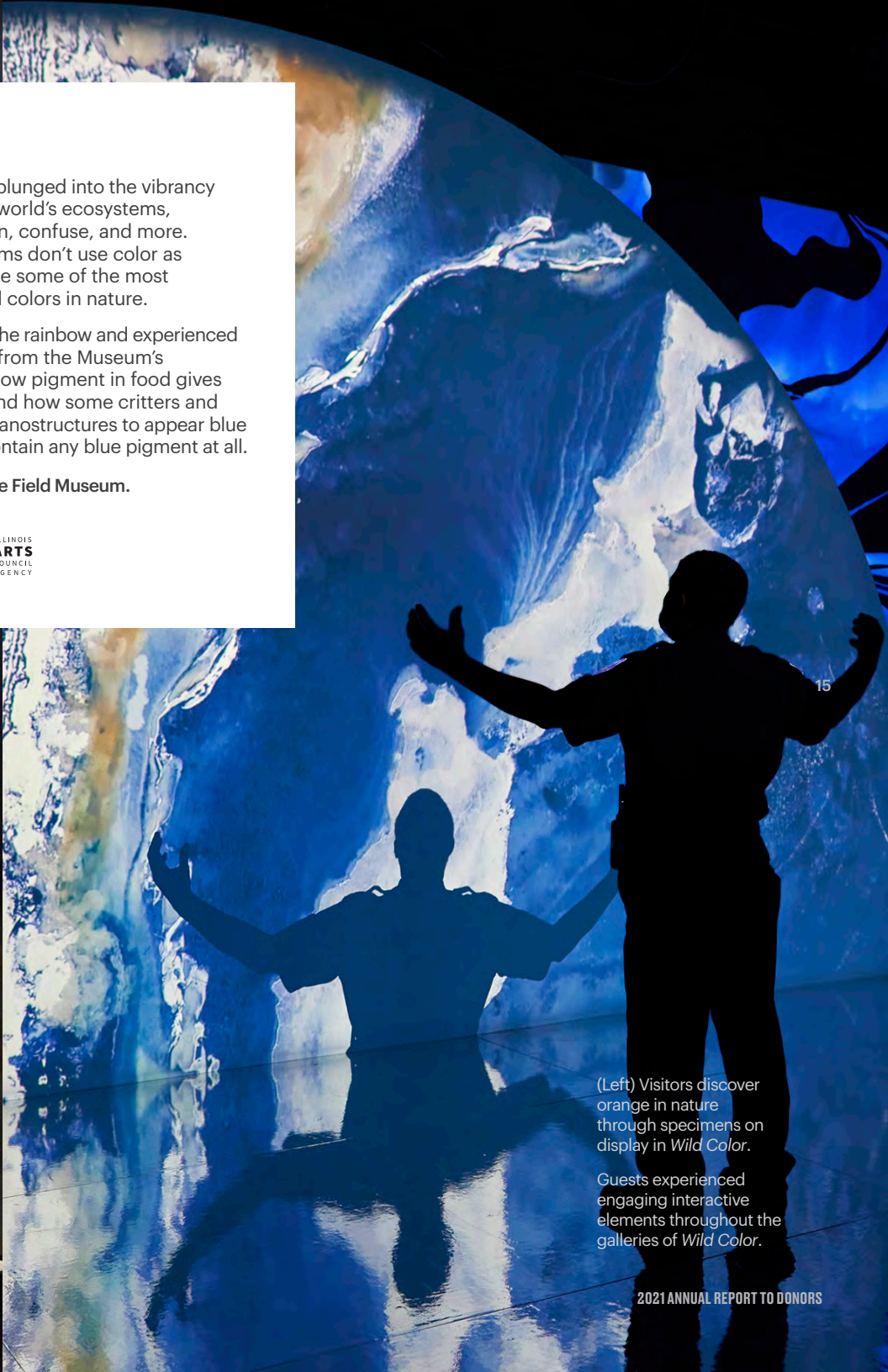
Wild Color

Visitors to *Wild Color* were plunged into the vibrancy of nature. Throughout the world's ecosystems, color is used to signal, warn, confuse, and more. And while minerals and gems don't use color as organisms do, they produce some of the most splendid and concentrated colors in nature.

Visitors took a trip through the rainbow and experienced some of the finest objects from the Museum's collections. They learned how pigment in food gives some animals their color and how some critters and plants use light-reflecting nanostructures to appear blue when they don't actually contain any blue pigment at all.

Wild Color was created by the Field Museum.

Major Sponsors:



(Left) Visitors discover orange in nature through specimens on display in *Wild Color*.

Guests experienced engaging interactive elements throughout the galleries of *Wild Color*.



(Left) A garden volunteer installs signage explaining the benefits of pollinator-friendly prairie plants in the front yard of an Altgeld Gardens home.

(Opposite) Field Explorer campers explore the Cyrus Tang Hall of China.

(Opposite, far right) Campers discover the Field's vast collections behind the scenes.

Community-centered conservation at Beaubien Woods

Many threads of the Keller Science Action Center's work came together this year at Beaubien Woods Forest Preserve and neighboring Altgeld Gardens on Chicago's far South Side. With partner TCA Health Clinic and other local groups, the Keller Center organized a series of outdoor nature-based healing sessions and an online toolkit called Outdoor Rx. This effort expanded mixed kitchen and native pollinator gardens at dozens of multigenerational households in Altgeld Gardens, providing fresh, healthy produce for families.

In addition, youth in the Chicago Green Ambassadors internship surveyed local residents about what they want to see in a new nature-and-heritage-inspired gathering space in Beaubien Woods, building on the model developed with the Chicago Park District in the Burnham Wildlife Corridor. In the fall, the Keller Center hosted community stewardship days to collect native seeds and remove invasive species, restoring areas of Beaubien Woods most accessible to local residents.



Summer of Science

Field Museum educators were ecstatic to offer its Field Explorers summer camps in-person again. Field Explorers fosters a love of science and exploration in children from kindergarten through 8th grade. Campers had the opportunity to chat with Field researchers and museum professionals about the work that goes on behind the scenes, and see rarely seen items from the collections. Special tours, guided activities, and outdoor games, supported their natural curiosity about the world around them through one-of-a-kind experiences you can only have at the Field Museum.

17



6,152

kids engaged in Youth Conservation Action and other programs

586

Nature Kits distributed to schools

355

participants in the Teen Volunteer Program

65

teachers served by school-based programs



Teens experience STEM at the Field

During the summer of 2021, the Field Museum offered a new Digital Learning Program. Thirteen high school students from all around Chicagoland had the unique opportunity to participate in research using some of the newest technological tools. In addition to five weeks of research experience, the students honed their skills in digital media creation, science communications, and computational thinking through creative projects and training.

The Digital Learning Program gave students a catalyst to jump-start their curiosity, linking them to new passions, guiding them on different STEM career paths they could pursue, and providing resources to support them as they contemplate careers in STEM.

(Above) Participants in the Digital Learning Program had the opportunity to use the Museum's 3D printer as part of their research projects.

The Machine Inside: Biomechanics

Living things are constantly under attack from water, wind, and gravity. Fortunately, life has responded with an arsenal of evolved structures to defend against the environment.

The Machine Inside: Biomechanics opened at the Field Museum on September 3, 2021. Visitors learned about how living things use pipes, pressure, and pumps to move nutrients to every part of the body. They learned about the grip strength of an ape and animals with the greatest bite forces, and also explored an immersive theater experience showing natural innovations from the giant ears of desert foxes to the anti-freeze blood of Antarctic fish.

The Machine Inside: Biomechanics was developed by the Field Museum, Chicago.

Premier Sponsor: **TW** Major Sponsor: **DISCOVER**

It links up its bones for a **HARD-HITTING** bite.
 Ha unido los huesos para **MAYOR FUERZA** en la mandíbula.

The prehistoric *Dunkleosteus* could easily crunch through the shells of armored prey. Thanks to its **linkages** (linking bones), it could bite with a force of 1,200 pounds (540 kg).

El *Dunkleosteus* prehistórico podía fácilmente atravesar las corazas de sus presas blindadas. Gracias a sus **articulaciones** podía morder con una fuerza de 1,200 libras (540 kg).



It links up its bones for a **FAR-REACHING** bite.
 Ha unido los huesos para **LEGAR LEJOS** con la mandíbula.

The Largemouth Bass is a huge fish with its long jaw. Thanks to its **linkages** (linking bones), it can reach the height of its head.

La lobina es un pez enorme. Gracias a sus **articulaciones** (huesos de la mandíbula), puede alcanzar la altura de su cabeza.

It links up its bones for a **FAR-REACHING** bite.
 Ha unido los huesos para **LEGAR LEJOS** con la mandíbula.

The Sting-jaw Wrasse sharpens its sharp teeth by coral cracks. Thanks to its **linkages** (linking bones), it can extend its jaw even twice the length of its head.

El pez espina de vidrio afiliza sus dientes en las grietas del coral. Gracias a sus **articulaciones** (huesos de la mandíbula), puede extender su boca incluso el doble de la longitud de su cabeza.



* This "bar" is actually not a bone; it's a muscle. It helped the *Dunkleosteus* achieve a powerful bite.
 Esta "barras" no es realmente un hueso, es un músculo. Este hueso le ayudó al *Dunkleosteus* a tener una poderosa mordida.

PULL THE HANDLE TO THE RIGHT
 to contract the jaw muscles
 (not shown).

HAZ DESLIZAR LA MANIVELA A LA DERECHA
 para contraer los músculos de la mandíbula
 (no se muestra).



Visitors to Biomechanics: The Machine Inside explore the mechanics that gave *Dunkleosteus* its amazing bite strength.



Pokagon Potawatomi Black Ash Baskets: Our Storytellers

The Field Museum is setting an important example of how Native peoples and museums can collaborate on exhibitions about Indigenous cultures. In April, the Field Museum opened *Pokagon Potawatomi Black Ash Baskets: Our Storytellers*. The exhibition celebrated the Pokagon Potawatomi people, history, and stories woven into the black ash baskets.

(Left) Red and tan black ash basket produced by an unknown Pokagon Potawatomi artist.

(Above) Curlicue basket made by Jamie Chapman, an award-winning Pokagon basket maker.



(Above) Johari Cole-Kweli shows Keller Center ecologist Erika Hasle around her property. She imagines that her son might be farming this land in 25 years, and notes that the descendants of the previous owner still visit and connect with the land.

(Above, right) Cole-Kweli's land produced the longest list of birds (41 species) of any of the private parcels surveyed. Notable finds included Northern Bobwhite (pictured), Yellow-billed Cuckoo, Red-headed Woodpecker, Bell's Vireo, Lark Sparrow, Orchard Oriole, and Blue Grosbeak.



Holistic land plans **support intergenerational stewardship**

Over the past 10 years, residents of rural Pembroke Township, Illinois have shown that private lands have an important role to play in a conservation mosaic that supports community well-being. In 2021, the Keller Science Action Center collaborated with five local landowners to create Holistic Land Plans for their properties and completed their first plan with longtime partner Johari-Cole Kweli. The document provides a snapshot of her 40-acre property's history, neighbors, key species and features, and conservation challenges. Field Museum ecologists provided guidance, such as which portions of the land to manage as savanna and which to manage as woodland, to support the Cole-Kweli family's long-term vision for the land: a balance of organic agricultural production and wildlife conservation. Over the long term, buttressed by the right resources and technical support, these plans will help promote resilient, equitable conservation in Pembroke.



Becoming Jane: The Evolution of Jane Goodall

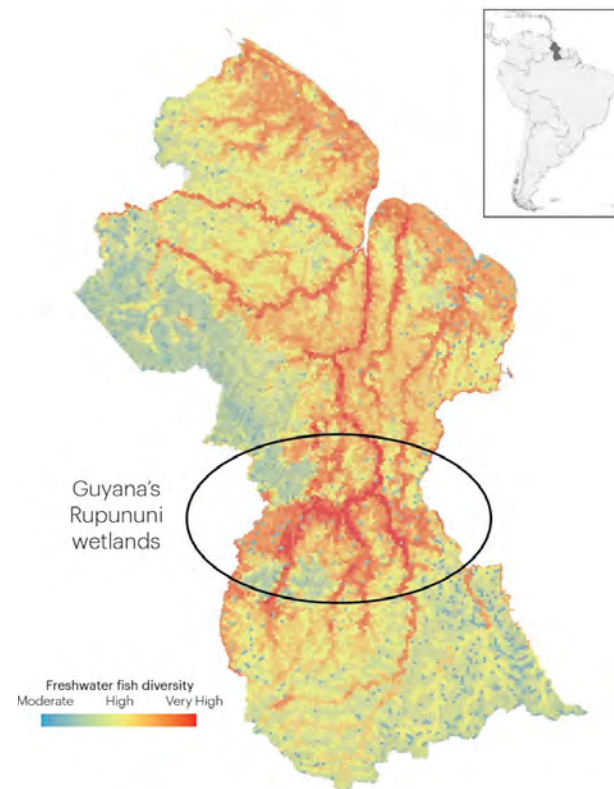
Visitors to *Becoming Jane: The Evolution of Dr. Jane Goodall* were invited to take a journey through the life of Dr. Goodall from childhood to world-renowned scientist. The award-winning exhibition featured stunning photography provided by National Geographic and the Jane Goodall Institute. Also on display were childhood mementos, field journals, and equipment. Today, Dr. Goodall spends her time as a conservationist and activist, spreading a message of hope that, together, we can protect the natural world.



(Above) Jane Goodall spent many hours sitting on a high peak with binoculars or a telescope, searching the forest below for chimpanzees.

(Above, right) This map shows aquatic biodiversity in Guyana; red indicates the highest level of diversity. Our focus is on the North Rupununi, where the headwaters of the Amazon and the Essequibo river systems meet. Rainy season flooding temporarily joins them into a single hyper-diverse aquatic corridor stretching from the Caribbean to the South Atlantic.

(Opposite) Guyana's rivers and wetlands provide abundant food for people, harpy eagles, black caiman, and much more.



Field Museum helps Guyana set national biodiversity priorities

In South America, Guyana is known as “the land of many waters,” and its rivers and wetlands host an amazing diversity of life, but looming development projects threaten that diversity. The Keller Science Action Center has brought together the most comprehensive understanding of the country's biodiversity to date. In 2021, Keller Center scientists presented these results to Guyana's national Environmental Protection Agency and other government leaders. The information is helping to set national conservation and sustainable development priorities, protecting Guyana's forests, waterways, and the people who depend on them.

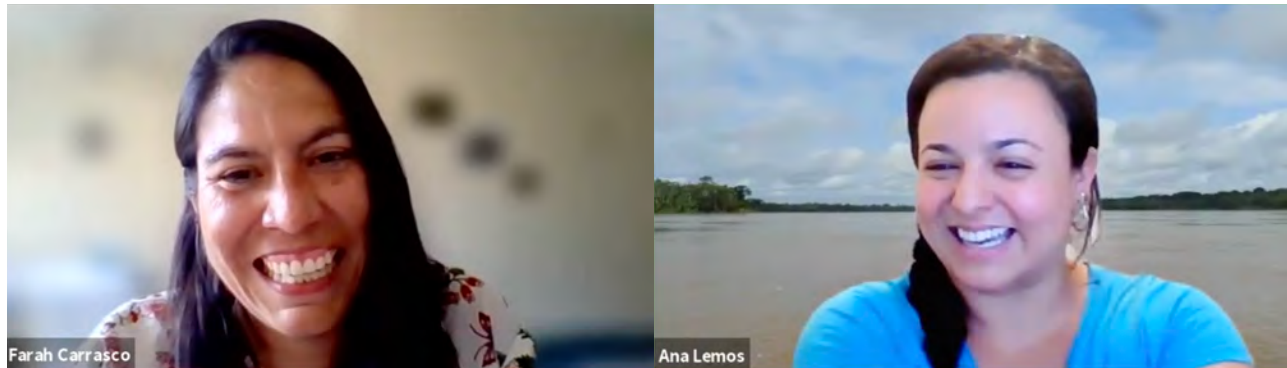


Development projects in Guyana pose threats to the country's incredible biodiversity, but significant opportunities remain for durable, community-centered conservation.

Celebrating Culture at the Field

Volunteer staff committees helped the Field Museum honor cultural heritage months and feature diverse voices. Among the celebrations, the Field offered robust programs for Black History Month, Women's History Month, Pride Month, Latinx Heritage Month, and Native American Heritage Month. Through a mix of online and in-person events, digital storytelling, and more, the Museum amplified marginalized voices and honored many of the cultures represented in its vast collections. By flying the Juneteenth flag, opening November with an inter-tribal song performed in the Rice Native Gardens, sharing our conservation work in the Andes-Amazon in an all-Spanish episode of "Meet a Museum Insider," and much more, we remind our community that the Field is for everyone.





(Left) Farah Carrasco and Ana Lemos discuss the Keller Science Action Center's work in South America—the first Meet a Museum Insider session held entirely in Spanish.

(Below) Sara and Imelda Saucedo discuss their experiences of two generations of family working at the Field Museum.

(Bottom) Tori Lee talks about what it takes to create new exhibitions at the Field Museum.



25



Meet a **Museum Insider**

Beginning in 2020, as part of its virtual offerings during the COVID-19 Pandemic, the Field Museum launched a new online program featuring staff from all across the Museum. The Learning Center and Social Media teams continued this collaboration throughout 2021. Forty-four different Museum Insiders shared their expertise with the public on Facebook through 30-minute live sessions. These episodes took different formats—some were show-and-tells from Museum labs, others were an informal chat from home—but all were a chance for the Field's online audience to hear directly from and ask questions of diverse staff members. Meet a Museum Insider sessions revealed the breadth of knowledge and depth of expertise held by Field Museum staff, highlighting both popular and lesser-known museum careers. Together these episodes were watched for 62,405 total minutes and had 15,589 post engagements.

HONOR ROLL

The Field Museum's accomplishments are made possible by a dedicated community of philanthropists. We gratefully acknowledge these donors for their generosity in 2021.





Centennial Anniversary

This year we celebrated the 100th anniversary of the opening of the Field Museum's iconic lakefront home. For a century, this grand structure has welcomed nearly 137 million visitors, supported the research of generations of scientists, and housed an irreplaceable collection of objects and specimens that today numbers more than 40 million!

The generous support of donors—like you sustains this excellence and ensures that the Field will continue to connect all of us to the natural world and the human story.



Board of Trustees

Members of the Board of Trustees offer leadership and philanthropy to make the Field Museum an extraordinary force for science and learning.

EXECUTIVE COMMITTEE AND OFFICERS

W. Rockwell Wirtz <i>Chair</i>	Jason M. Wortendyke <i>Vice Chair,</i> <i>Retirement and Benefits</i>
Julian F. Siggers, PhD <i>President and CEO</i>	Michael O'Grady <i>Secretary</i>
Wilbur H. Gantz III ^P <i>Chair Emeritus</i>	<i>At Large</i> Richard W. Colburn Karen Z. Gray-Krehbiel Matthew K. Simon
Constance T. Keller ^P <i>Vice Chair, Governance</i>	TRUSTEES
John L. Bucksbaum <i>Vice Chair, Facilities and Administrative Services</i>	Arjun Aggarwal
Dr. Richard A. Chaifetz <i>Vice Chair, Government Relations</i>	Susan M. Benton
Robert W. Crawford, Jr. <i>Vice Chair, Audit</i>	Howard B. Bernick
Marsha A. Cruzan <i>Vice Chair, Development</i>	Amy E. Best
Jeffrey T. Foland <i>Vice Chair, Marketing</i>	Robert Blackwell, Jr.
Marshall B. Front <i>Vice Chair, Investment</i>	Kathleen M. Boege
Judy Greffin <i>Vice Chair, Finance</i>	Tracy Cahillane
David D. Hiller <i>Vice Chair, Integrative Research</i>	Gregory C. Case
Jeffrey B. Keller <i>Vice Chair, Science Action</i>	David L. Cotton
Margaret B. MacLean <i>Vice Chair, Collections</i>	Mark J. Cozzi
Bobby Mehta <i>Vice Chair, Learning</i>	Sir Peter Crane FRS
Jai Shekhawat <i>Vice Chair, Digital Engagement</i>	Kermit R. Crawford
Jessica P. Sarowitz <i>Vice Chair, Diversity, Equity, Access, and Inclusion</i>	Oscar A. David
Dawn L. Solomon <i>Vice Chair, Exhibitions</i>	Roger K. Deromedi
	Margery Kamin Feitler
	Marshall Field V ^P
	Michael E. Flannery
	Jack M. Greenberg
	Lewis S. Gruber
	John J. Hamill, Jr.
	Caryn Harris
	John O. Hudson III
	Jamee C. Field Kane
	Michael L. Keiser
	Shannon M. Kennedy
	Richard L. Keyser
	William C. Kunkler III
	Joseph P. Lacher, Jr.

Jorge M. Leon
Richard M. Levin
Diane von Schlegell Levy
Neil S. Novich
James J. O'Connor, Jr.
Christopher A. O'Herlihy
Kenneth W. O'Keefe
Asutosh Padhi
Aurie A. Pennick
John F. Podjasek III
Peter B. Pond
Scott Rafferty
John Rau
Thomas S. Ricketts
Dr. Dilara A. Sayeed
Nydia S. Searle
Michael E. Severino, MD
Jennifer L. Sherman
Adele S. Simmons
Mary L. Smith
Judson B. Snyder
Thomas S. Souleles
Mark Tebbe
Marcus von Kapff
Mark R. Walter
Everett S. Ward
Laura S. Washington
Patrick Wood-Prince

Ex-Officio Trustees

Sandra Deromedi
Myetie Hamilton
Dr. Ka Yee C. Lee
Ryan S. Ruskin
Alin Schubert
Kevin Stineman
Margie Stineman

National Trustees

Herb Alpert
Nana S. Banerjee, PhD
Gail K. Boudreaux
Jean-Claude Brizard

Daniel Diermeier
James J. Glasser
Louise Glasser
Lani Hall
Leo F. Mullin^P
David C. Parry
Michael Tang
Elie Weaver
Nancy Hamill Winter

Life Trustees

Mrs. T. Stanton Armour^P
Judith S. Block^P
Norman R. Bobins
Willard L. Boyd
John A. Canning, Jr.^P
Worley H. Clark, Jr.
James W. Compton
James A. Delaney III
Thomas E. Donnelley II
Michael W. Ferro, Jr.
Wayne E. Hedien
Pamela K. Hull^P
Richard M. Jones^P
William H. Kurtis
Richard W. Lariviere, PhD
Robert B. Loveman
Scott P. Marks, Jr.
John W. McCarter, Jr.
James J. O'Connor, Sr.^P
John W. Rowe^P
David M. Tolmie
Robert L. Wesley
Miles D. White^P
William J. White

as of November 10, 2021

Founders' Council

The Founders' Council is the Field Museum's premier annual giving society. Members contribute \$2,500 or more to support every aspect of the Museum's mission.

CO-CHAIRS

Ryan S. Ruskin
Kevin Stineman
Margie Stineman

CHAIRMAN'S CIRCLE OF THE FOUNDERS' COUNCIL

Members of the Chairman's Circle demonstrate an exceptional commitment to the Field Museum with annual gifts of \$25,000 or more. We gratefully acknowledge these leaders in philanthropy.

\$100,000+

Marshall Field V^T
Linda and Wilbur^T Gantz
Sue Ling Gin Foundation Trust
Karen Z. Gray-Krehbiel^T and John H. Krehbiel, Jr.
Diane v. S.^T and Robert M. Levy
Alicia and Peter^T Pond
Mr. and Mrs.^T Michael D. Searle

\$75,000 to \$99,999

Dr.^T and Mrs. Richard A. Chaifetz
The Crown Family
Jessica^T and Steve Sarowitz
Mr.^T and Mrs. W. Rockwell Wirtz

\$50,000 to \$74,999

Anonymous
The Howard B. Bernick Foundation^T

Mr. and Mrs.^T Steven A. Cahillane
Mark Cozzi^T and James Goeke
J.R. and Dawn Davis
Connie^T and Dennis Keller
Mr.^T and Mrs. Richard L. Keyser
The Knowles Foundation
Swati and Bobby^T Mehta
Kenneth W. O'Keefe^T and Jason Eric Stephens
Colette Evans and John Rau^T
Michael Tang^T
Lori and Marcus von Kapff
Kimbra and Mark^T Walter
Elie Weaver^T and Hilton Weinberg

\$25,000 to \$49,999

Anonymous (2)
Anu and Arjun^T Aggarwal
Konrad Banaszak and Jennifer Sugarman
Robert D. Blackwell, Jr.^T
Judith S. Block^T
Roger O. Brown^P
Jacolyn and John^T Bucksbaum
Rita and John^T Canning
Greg^T and Mamie Case Charitable Fund
Michele Chaffee and Adam Nordin
Henry T. Chandler^P
Mr.^P and Mrs. James J. Conrad
Winnie and Bob^T Crawford
Marsha Cruzan^T and Thomas McGinnis
Melissa and Oscar^T David
Mr.^T and Mrs.^T Roger K. Deromedi
Dr. and Mrs. Eugene F. Fama
Mr. and Mrs.^T Richard Feitler
Lori and Michael^T Flannery

^PPast Board Chair

Marshall B. Front Family Charitable Foundation / Laura De Ferrari and Marshall B. Front^T
 Judy^T and Bill Greffin
 The Harris Family Foundation
 Stephanie C. Harris / The Edith B. and Lee V. Jacobs Fund No. 2
 Colette and Wayne^T Hedien
 David D. Hiller^T
 Marshall^D and Doris^D Holleb Family
 John O. Hudson III^T and Nyaa Parson-Hudson
 Jamee Field Kane^T / The Edith B. and Lee V. Jacobs Fund No. 1
 Molly and Jeff^T Keller
 Shannon Kennedy^T
 Robert A. Kubicka, MD
 Mr.^T and Mrs. Joseph P. Lacher, Jr.
 Robert B.^T and Gail J. Loveman
 The Negaunee Foundation
 Neil^T and Deborah Novich
 Mr.^T and Mrs. Michael O'Grady
 Mr.^T and Mrs. John F. Podjasek III
 Prince Charitable Trusts
 Cecelia and Thomas^T Ricketts
 Jeanne M. and John W.^T Rowe
 Michael E. Severino, MD^T
 Jai S. Shekhawat Trust^T
 Jennifer L. Sherman^T
 Adele S. Simmons^T
 Julie and Matthew K.^T Simon
 Mr.^T and Mrs. Jud Snyder
 Cia and Tom^T Souleles
 Robin and Mark^T Tebbe
 Miles D. White^T
 Jason Wortendyke^T and Ariel Knowles Wortendyke

\$10,000 to \$24,999

Anonymous (4)
 Albert L. Baker^D
 Nana S. Banerjee, PhD^T and Smita C. Banerjee, PhD
 Barn Road Foundation / Alison Altman and Jared Bard
 Joyce and Frank Bauer
 Shannon and Larry Bell
 Amy E. Best^T
 Mr.^T and Mrs. Norman R. Bobins / Bobins Family Fund at The Chicago Community Foundation
 T. Kimball Brooker
 Rosemarie and Dean L. Buntrock
 Linda and Vincent Buonanno
 Rebecca Childers Caleel
 Joyce E. Chelberg
 The Comer Foundation Fund
 Froilan P. Concepcion and Cecilia Concepcion
 Mr.^T and Mrs. Kermit R. Crawford
 Janet and Craig Duchossois
 Hattie A. and Marie V. Fatz Foundation
 The Foland Family^T
 The Robert E. Gallagher Charitable Trust
 Alice and Richard Godfrey
 Mr.^T and Mrs. Jack M. Greenberg
 Hamill Family Foundation / Nancy Hamill Winter^T
 Marguerite D. Hark
 Mr. and Mrs. Matthew C. Harris
 Robert D. Hevey, Jr. and Constance M. Filling
 Dr. and Mrs. Wayne J. Holman III
 CJ Hughes and Andrea Duys
 Lorraine M. Hurt and George M. Ingram
 H. Fisk Johnson

Mrs. Noel Kaplan
 Lindy and Mike^T Keiser
 Kerry and Temp Keller
 Anna Marie and Jerry Kelly
 Holly L. King
 Mr. and Mrs. Keith Kizziah / Malott Family Foundation
 Laurie and Rich Kracum
 Mr. and Mrs. Robert R. Kunkler
 Richard M. Levin^T and Sally J. McDonald
 Susan H. Luciu
 Margaret B. MacLean^T
 Mr.^T and Mrs. John W. McCarter, Jr.
 Nayar Family Foundation
 Mr.^T and Mrs. Chris O'Herlihy
 Cathy and Bill Osborn
 Asutosh Padhi^T and Rita Anand-Padhi
 Mr. and Mrs. Donald W. Patterson / The Warwick Foundation
 Jacqueline L. Quern
 Gail and William Radzevich
 D. Roskin
 Dilara^T and Yousuf Sayeed
 Karla Scherer
 Marilyn L. Schweitzer and Michael A. Firman
 Harriett Ann Sidoli
 Kass F. Sigal
 Marianne Lovink and Julian Siggers, PhD^{TE}
 Liz Stiffel
 Judith B. Sugarman
 Mr. and Mrs. Robert E. Wood II

\$5,000 to \$9,999

Anonymous (3)
 The Allyn Foundation
 Birute J. Apke
 Miah and Vernon Armour
 Laura Bader and Victor Sturm
 Susan M. Benton^T

David Bohan and Kathryn Kemp
 Bethany and Scott Brady
 Ceres Foundation
 Christina and Paul Chatalas
 Pamela Conant
 Mr. and Mrs. George M. Covington
 Daphne and John Cunningham
 Judy and Tapas Das Gupta
 Dr. and Mrs. Lloyd Davidson
 Karen and Bill Davis
 Susan and Mark Dawson
 Mr. and Mrs. James M. Denny
 Thomas R. Doler
 The Donnelley Foundation^T
 Glenda W. Duncan
 Eldred-Harland Charitable Fund at The Chicago Community Foundation

Barbara V. Fisher
 Judith A. Fitz
 Ginny and Peter Foreman
 The Philip M. Friedmann Family Charitable Trust
 The Gehrke and Vanderson Family
 Mr. and Mrs. Camillo Ghiron
 Mr.^T and Mrs.^T James J. Glasser
 Daniel J. Gocek and Lauren Conroy
 Donald P. Grasso
 Jean Greene
 Katherine L. Griem, MD
 Anastasia Gutting
 Patricia and William J. Hagenah
 Mr. and Mrs. Thomas H. Hodges
 Heidi and Richard Holm

George Hrycelak and Sophia Welykyj
 J. Thomas Hurvis
 Jill Hutchison and David Rosholt
 Irish Woods Foundation
 Steven M. Isaac and Judy L. Olds
 Judy Johanson
 Charles L. Katzenmeyer^E
 Brian C. Kocinski and Genevieve E. Hillis
 Martin J. Koldyke
 Mr. and Mrs. Frederick W. Langrehr
 René and Bruce Lauer
 Jorge M. Leon^T
 Mr. and Mrs. Robert Linn
 The Loewenthal Fund at The Chicago Community Foundation



Because Earth Campaign

On December 31, 2021 the Field Museum concluded its *Because Earth* campaign, raising \$316.2 million for the Museum's future. Through the generous support of our extended family of donors, the Museum renovated Stanley Field Hall, opened several new areas and exhibitions like the Rice Native Gardens and the *Native Truths: Our Voices, Our Stories*, and formed four centers of excellence.

Mr. ^T and Mrs. Scott P. Marks, Jr.	Cheri and Michael Vaglienty	Edward J. Calkins	Mr. and Mrs. Kenneth P. Fischl	Robert Bruce Johnson and Ann K. Eldred	Carlette C. McMullan and John Gibbons, Jr.
Marie A. Marotta	Anne Van Wart and Michael Keable	Lindsay W. Carlton	Martha and James Foght	Linda M. Jung	Mr. and Mrs. Charles P. McQuaid
Donna J. Matson and Robert W. Carpenter	Ashley and Jordan von Kluck	Guy T. Castino	William Fotis and Sam Gentile ^D	Kathleen and Alex Kallend	Elisabeth C. Meeker
William B. McDonald and Ptah Sekhmat Osiris	Rose and Robert Wagner	Mr. and Mrs. John S. Chapman	Deborah and Charles Frank	Mr. and Mrs. William O. Kasten	Withrow W. Meeker
Kennon P. McKee, PsyD	Dilnaz and Qaiser Waraich	Ricardo Chimal, Jr.	Donna and Peter Freeman	Mr. and Mrs. Eric Kauffman	Pamela L. Miles
Mrs. Hugo J. Melvoin	William J. White ^T	Gay-Young Cho and Yu-Lam Christopher Chiu, MD	Mr. and Mrs. Joel M. Friedman	Janice Kaye	Mr. and Mrs. Robert R. Moeller
Moller Family Foundation	April R. Wilson	Betty L. Cleeland	Gretchen M. Gillis and Dr. David R. Cook	Mr. and Mrs. Kenneth C. Keller	Cynthia A. Moody
Mr. ^T and Mrs. Leo F. Mullin	Melanie R. Wojtulewicz and Tony Crowe	Sharon P. Cole	Beth and Chris Glass	Mr. and Mrs. Eric Kennedy	Lisa and Jerry Moore
Mary Jane Nordlund	Mr. and Mrs. Kenneth J. Yager	James W. Compton ^T	Nika Gloyeske	Mr. and Mrs. Robert E. King	Jennifer and Brad Morehead
Mark A. Oates & Family	\$2,500 to \$4,999	Mark Crane	Donna and Roger Godel	Kathleen and Dennis Klaeser	Mr. and Mrs. John V. Morris
Mr. ^T and Mrs. James J. O'Connor, Jr.	Anonymous (10)	Mr. and Mrs. Kenneth W. Dam	Teresa Kang and John Goerner	Becky and Lester Knight	Mr. and Mrs. Thomas M. Mulcahy
Dr. and Mrs. William R. Parkhurst	Mary Claire and Doug Allvine	Laura and Dave Davis	Delta A. Greene	Dr. and Mrs. Barry Kohl	James Murphy
Mr. and Mrs. Mane E. Pritza	Rodney Austin	Rebecca E. Deaton	Dr. and Mrs. Daniel Grossman	Wende Fox Lawson and Jim Lawson	Alexandra C. and John D. Nichols
Mr. ^T and Mrs. Scott A. Rafferty	Susan and Stephen Baird	Cheryl and Michael Del Campo	Robert L. Grzywinski	Ka Yee C. Lee ^T and Thuong G. Van Ha	James H. Niehoff and Jolie R. Macier
Helen S. Reed	Lorraine and Randy Barba	Jill and Robert Delaney	Esther R. Hankin	Little Lion	Jennifer and Craig Niemann
Anita J. Rogers	Mr. and Mrs. Aaron A. Barlow	Mr. and Mrs. James W. DeYoung	Mr. and Mrs. Dean M. Harrison	Mr. and Mrs. Jordan Lowe	Christina J. Norton and John A. Biek
Ryan Ruskin ^T and Michael Andrews	Martha and James Barrett	Anne and Joshua Dickemann	Mr. and Mrs. J. Duncan Healy	Ilene and Lawrence Lubell	Mr. ^T and Mrs. James J. O'Connor, Sr.
John P. Salvino	Mary Jo and Doug Basler	Janet W. Diederichs	Dawn and Ted Helwig	Thomas T. Macejko, Jr. and Amanda Maw Macejko	Mary B. O'Neil
Mr. and Mrs. Robert J. Sanborn	Verna L. Baughman, MD	Janice and Richard Domanik	Mr. and Mrs. Patrick J. Herbert III	Mr. and Mrs. Alan J. Magerkurth	Virginia A. O'Neill
Sargent Family Foundation	Mr. and Mrs. Philip S. Beck	Carolyn K. Donaldson and James S. Donaldson	Kimberlee S. Herold	Patricia A. Malloy	Donna L. Owens
Susan and Alan Sebulsky	Helene Beisecker and Jean Ann White	Tara Dunn and Michael Peroski	Mr. and Mrs. John L. Hines	The Louise and Elizabeth Manke Foundation / Irene C. Manke	The Richard Laurence Parish Foundation
Mr. and Mrs. Gordon I. Segal / Segal Family Foundation	Deborah A. Bekken ^E and Richard G. Kron	Mignon W. Dupepe and John B. Snyder, Jr.	Peggy L. Hoberg	Todd Christopher Marek and Vana Thayu	Jo Ann and Joe Paszczyk
Mr. and Mrs. Richard J. L. Senior	Mr. and Mrs. Harrington Bischof	Thomas E. Durica and Susan Jacob	Mr. and Mrs. Arthur Holzheimer	Peter Marks and Dorothy Mackevich Marks	Shauna Peet
William W. Shaw	Shaun and Andy Block	Jon Ekdahl and Marcia Opp Ekdahl	Mr. and Mrs. John L. Houston	Jamie C. Marshall and Richard Sobkowiak	Lorraine and Norman Perman
Bessie Shields Foundation	Mr. and Mrs. Philip D. Block IV	Cherelynn A. Elliott	Maria R. Hrycelak, MD	Jennifer and David Martay	Judith and Charles Pitman
Richard M. Skolly and Kate A. Feinstein	The Bloom-Kessler Family	Mr. and Mrs. Christopher Eperjesy	Ying Hsu and Donald R. Monson	Michelle L. Maton and Michael C. Schaeffer	Dr. and Mrs. Steven Potashnick
Geoffrey Smith and Catherine Stewart	Hyacinth and Le Monte G. ^E Booker, Sr.	Melissa Booth Fadim and James B. Fadim	Felix Yuansi Huang and Joshua Lau	Mr. and Mrs. Charles R. Matthews	Andra and Irwin Press
Margie ^T and Kevin ^T Stineman	Mr. and Mrs. John J. Borland, Jr.	Susan and Alexander Faurot	Laurie Huget and Werner Huget	McKee Family Foundation	Mary Quigg
Kathleen and Lawrence Sullivan	Barb and Nathan Brown	Sharon S. and William L. Feather	The Humanist Fund	Mr. and Mrs. Ronald R. McKee	James A. Radtke and Susan A. Kressin
Dana Temple and Ralph Riggs	Mr. and Mrs. Andrew W. Brown	Mary and Bruce Feay	Irish Woods Foundation	Etta and John McKenna	Mr. and Mrs. Robert Raimondi
Mr. and Mrs. Edgar L. Thayer	Beth and Samuel Buchsbaum	Judith Findorff	Jeani and Rich Jernstedt	Jane C. McLagan	Ginevra ^E and Ben Ranney
Jeannie and Thomas Tisbo	Michelle and David Buck	Mr. and Mrs. Peter D. Fischer	Pamela MacVicar Johnson	Deanne and John McLean	Nancy Ranney
Mr. and Mrs. Orlin D. Trapp, Jr.	Butler Family Foundation				Robert and Barbara Ann Richards

Jack Ringer Family Foundation
 Tonja Rizai Hall
 Mr. and Mrs. Steven A. Rosen
 Robert A. Rosholt and Sharon L. Brunelle
 Susan B. Rubnitz
 Charles Ruedebusch and Linda Flack
 Mr. and Mrs. John W. Rutledge
 Buzz Ruttenberg
 Mr. and Mrs. Patrick G. Ryan
 Barbara M. Schleck and Gary M. Ropski
 Mr. and Mrs. Stephen E. Schmitt
 Mr. and Mrs. Richard H. Schnadig
 Karen and Frank Schneider
 Barbara and Thomas Schnitzer
 Suzanne and Kenneth Schulte
 Barbara and Richard Schultz
 Marilyn C. and Stephen A. Scott
 Mrs. Stephen H. Sentoff
 Mr. and Mrs. Jeffrey S. Sharp
 Sally Sharp
 Charlene and Bob Shaw
 Mr. and Mrs. Neil J. Sheehan
 Pam and Tom Sheffield / JS Charitable Trust
 Timothy C. Sherck
 Anne Slade
 Elizabeth L. Snyder
 Tom Sourlis and Susan Eleuterio
 The Sparacio Family
 Barbara A. Speer
 Mr. and Mrs. Neele E. Stearns, Jr.
 Kevin L. Stoeckel and Emily Heisley Stoeckel
 Lars A. Stole, PhD and Audris Shirley Wong

Ivan G. Strauss
 Steven Strohmeier^F and Josie Brown
 Mary and Harvey Struthers
 Wayne N. Svoboda
 Linda J. Swanson and John Seeley
 Mr. and Mrs. John W. Taylor III
 Helen and Richard Thomas
 Daniel Tierney and Anke Faber
 Jacqueline and Glenn Tilton
 Mr.^T and Mrs. David M. Tolmie
 Dr. Alysia and Mr. Daniel Townsend
 Mr. and Mrs. James A. Tuchler
 Catherine and Joseph Uhrich
 Shiju Varghese and Christina Chamakala
 Anita and Thomas Veldman
 The Vitale Family Foundation Inc.
 Kathleen D. Vogt
 Mr. and Mrs. Douglas H. Walter
 Mr. and Mrs. John R. Walter
 Paul Waters and Nancy Bugajski
 Jane Wells and Burton Ferrini
 Ryan B. Whitacre and Katherine T. Donaldson
 Raymon F. Whitney
 Claudia L. Winkler
 Mr. and Mrs. William E. Wolf
 Carole Wood and Carl Jenkins
 Barbara and Alain Wood-Prince
 Nancy G. Wulfers
 Colleen B. Yale and Michael R. Yale
 Irene Young and Matt Bayer

2021 Cumulative Contributions

We acknowledge donors for their support of several Field Museum initiatives.

\$1,000,000+

Anonymous
 Linda and Wilbur^T Gantz^{F+}
 The Grainger Foundation^{*}
 Connie^T and Dennis Keller^{F+}
 Fay and Daniel Levin^{F+}
 The Negaunee Foundation^F
 Daniel F. and Ada L. Rice Foundation
 Jessica^T and Steve Sarowitz^{F+}
 U.S. Small Business Administration^{*}

\$500,000 to \$999,999

Anonymous (2)
 Marilynn B. Alsdorf^{DF}
 Winnie and Bob^T Crawford^{F+}
 Marshall Field V^{TF+}
 Robert E. Kling^D
 Diane v. S.^T and Robert M. Levy^{*}
 Robert R. McCormick Foundation
 Gordon and Betty Moore Foundation^{*}
 University of Chicago
 Miles D. White^T and Family^F

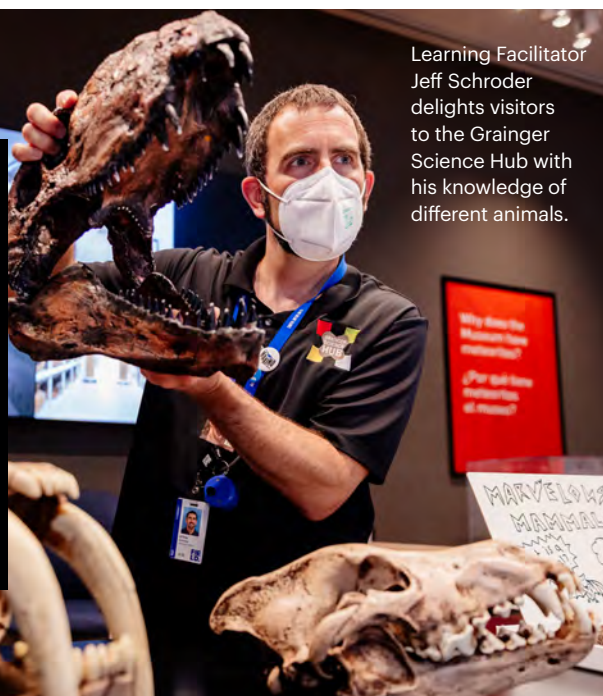
\$100,000 to \$499,999

Anonymous
 AbbVie
 Aon
 Archer Daniels Midland Company^{*}
 Konrad J. Banaszak^C
 Mary Jo and Doug Basler^{C+}

BMO Harris^{*}
 Bobolink Foundation
 The Boudreaux Family^T
 Jacolyn and John^T Bucksbaum^{F+}
 Rita and John^T Canning^F
 Dr.^T and Mrs. Richard A. Chaifetz
 Cleveland-Cliffs
 ComPsych Corporation
 The Crown Family^{*}
 Mr. and Mrs. Lester Crown
 Mr.^T and Mrs.^T Roger K. Deromedi^{*}
 Marshall B. Front Family Charitable Foundation / Laura De Ferrari and Marshall B. Front^{TF+}
 Sue Ling Gin Foundation Trust^{*}
 Karen Z. Gray-Krehbiel^T and John H. Krehbiel, Jr.
 Efroymsen Family Fund
 Hamill Family Foundation / Nancy Hamill Winter^{TF}
 Jeanne M. Hansen^D
 Mary P. Hines^{FD+}
 ITW^{*}
 Institute of Museum and Library Services^{*}
 Christopher A. Janko^D
 Julian Grace Foundation
 Lindy and Mike^T Keiser^F
 Mr. and Mrs. Robert E. King^F
 Lilly Endowment Inc.
 John D. and Catherine T. MacArthur Foundation^{*}
 The MacLean Family^{F+}
 Magellan Corporation^{*}
 Chauncey and Marion D. McCormick Family Foundation

Swati and Bobby^T Mehta
 Jeanne E. Murray^{FD}
 National Endowment for the Humanities
 National Science Foundation
 Nordloh Family Foundation, In Memory of John and Mary Nordloh
 Northern Trust^{*}
 Polk Bros. Foundation^{*}
 Alicia and Peter^T Pond^{FC+}
 Searle Funds^T at The Chicago Community Trust
 Mr. and Mrs.^T Michael D. Searle
 Mr. and Mrs. Gordon I. Segal / Segal Family Foundation^{F+}
 Barbara A. Speer^{*}
 Tawani Foundation^F
 Jeannie and Thomas Tisbo
 Walder Foundation
 Elie Weaver^T and Hilton Weinberg^{*}
 Mr.^T and Mrs. W. Rockwell Wirtz^{*}
\$50,000 to \$99,999
 Anonymous (4)
 Abbott^{*}
 Paul M. Angell Family Foundation
 Bank of America^{*}
 The Barker Welfare Foundation
 The Howard B. Bernick^T Foundation^{C+}
 The Brinson Foundation
 Roger O. Brown^{FD}
 Mr. and Mrs.^T Steven A. Cahillane
 J.R. and Dawn Davis^{*}
 Janet and Craig Duchossois^F

Ernst & Young LLP^{*}
 Jamee Field Kane^{TF} / The Edith B. and Lee V. Jacobs Fund No. 1
 Julius N. Frankel Foundation
 Christina & Ronald Gidwitz Charitable Foundation^F
 Ellis Goodman Family Foundation^{*}
 Mr.^T and Mrs. Jack M. Greenberg^F
 Illinois Arts Council Agency
 Edward C. Jerkey^{FD}
 JPMorgan Chase & Co.
 Mr.^T and Mrs. Richard L. Keyser^F
 Mr. and Mrs. Keith Kizziah / Malott Family Foundation^{*}
 The Knowles Foundation
 Madison Dearborn Partners LLC
 Mr.^T and Mrs. John W. McCarter, Jr.^F
 Mary and Mac McCormack
 Elizabeth Morse Genius Charitable Trust
 Karen A. Nordquist^{VF}
 Mr.^T and Mrs. Michael O'Grady
 Kenneth W. O'Keefe^T and Jason Eric Stephens
 Office of the Secretary of State, Illinois State Library
 Cathy and Bill Osborn^{*}
 Prince Charitable Trusts^{*}
 Betty D. Prout^{D+}
 Mrs. Alfred Lunt Putnam^{FD}
 Colette Evans and John Rau^T
 The Regenstein Foundation
 Jeanne M. and John^T W. Rowe^{F+}
 Joan and Paul Rubschlager^F



Learning Facilitator
Jeff Schroder
delights visitors
to the Grainger
Science Hub with
his knowledge of
different animals.

70th Annual Members' Nights

The Field Museum hosted its annual Members' Nights on May 19–21. This popular event was held virtually for the second year in a row. Over the course of three days, 946 member households joined the virtual celebration which featured 30 Field scholars showcasing objects from the collections not normally on display and collections storage areas that aren't accessible during in-person Members' Nights.

Mr. and Mrs. Patrick G. Ryan⁺
David L. Schlotterback^{FD}
Cia and Tom^T Souleles
John G. Symons Trust
Charities Fund / Marshall B. Front^T and Case Hoogendoorn, Co-Trustees
Michael Tang^T

Terra Foundation for American Art
Mr. and Mrs. Orlin D. Trapp, Jr.
U.S. Bank⁺
Lori and Marcus^T von Kapff
Kimbra and Mark^T Walter
Jason Wortendyke^T and Ariel Knowles Wortendyke⁺

\$25,000 to \$49,999

Anonymous (5)
Anu and Arjun^T Aggarwal⁺
Susan and Stephen Baird^F
The Robert and Isabelle Bass Foundation, Inc.
Amy E. Best^T
Robert D. Blackwell, Jr.^T
Judith S. Block^{TF}
Mr.^T and Mrs. Norman R. Bobins / Bobins Family Fund at The Chicago Community Foundation⁺
Mr. and Mrs. Gregory Q. Brown
The Buchanan Family Foundation⁺
Dianne and Thomas Campbell⁺
Greg^T and Mamie Case Charitable Fund
Michele Chaffee and Adam Nordin⁺
Henry T. Chandler^{FD}
Chicago Blackhawks Foundation⁺
Chicago Board of Education, Illinois Department of Natural Resources, National Oceanic Atmospheric Administration (NOAA)⁺
City of Chicago Department of Cultural Affairs and Special Events
Citadel⁺
Mr.^D and Mrs. James J. Conrad^F
Mark Cozzi^T and James Goeke
Marsha Cruzan^T and Thomas McGinnis
Melissa and Oscar^T David
The Duchossois Group, Inc.

Exelon
Dr. and Mrs. Eugene F. Fama^F
Mary and Bruce Feay^F
Federal Signal
Mr. and Mrs.^T Richard Feitler
Stephanie C. Harris / The Edith B. and Lee V. Jacobs Fund No. 2^F
Mr. and Mrs. Paul J. Finnegan
Lori and Michael^T Flannery
Ford Motor Company Fund
Dr. Evelyn Frank Trust⁺
GCM Grosvenor
Beth and Chris Glass⁺
Green Mountain Energy Company
Judy^T and Bill Greffin^F
John R. Halligan Charitable Fund⁺
Sally Mead Hands Foundation⁺
The Harris Family Foundation^F
Harris Family Fund of The New York Community Trust^F
Colette and Wayne^T Hedien⁺
David D. Hiller^T
Marshall^D and Doris^D Holleb Family
John O. Hudson III^T and Nyaa Parson-Hudson
Molly and Jeff^T Keller
Shannon Kennedy^T
Robert A. Kubicka, MD⁺
Mr.^T and Mrs. Joseph P. Lacher, Jr.
René and Bruce Lauer^{F+}
Robert B.^T and Gail J. Loveman^{FC}
McDonald's Corporation
Mr. and Mrs. Samuel M. Mencoff
Nicor Gas
Neil^T and Deborah Novich^F
Asutosh Padhi^T and Rita Anand-Padhi
Irma Parker^{FD}
Mr. and Mrs. James Perry
Mr.^T and Mrs. John F. Podjasek III
Cecelia and Thomas^T Ricketts
Tonja Rizai Hall⁺
Michael E. Severino, MD^T
Charlene and Bob Shaw^{FC+}
Jai S. Shekhawat Trust^T
Jennifer L. Sherman^T
Adele S. Simmons^{TF}
Julie and Matthew K.^T Simon
The Smart Family Foundation⁺
Mr.^T and Mrs. Jud Snyder
Mr. and Mrs. Charles H. Solberg, Jr.⁺
Mr. and Mrs. Neele E. Stearns, Jr.^F
Lorna Puttkammer Straus and Christopher M. Straus, MD⁺
Robin and Mark^T Tebbe
Howard A. Tyner
United Airlines
Walgreens
David E. Willard^{F+}
William Blair⁺
Winston & Strawn LLP
Wintrust Financial Corp.⁺
\$10,000 to \$24,999
Anonymous (5)
Analog Devices, Inc.

Aileen S. Andrew Foundation
Aramark Sports and Entertainment
Aramark⁺
Albert L. Baker
Nana S. Banerjee, PhD^T and Smita C. Banerjee, PhD
Barn Road Foundation / Alison Altman and Jared Bard
Joyce and Frank Bauer^{C+}
Baxter International Inc.
Shannon and Larry Bell
Susan M. Benton^T
Michael Best & Friedrich LLP
T. Kimball Brooker
Olivia and Matthew Brzostowski⁺
Rosemarie and Dean L. Buntrock^{FC}
Butler Family Foundation
Rebecca Childers Caleel
Lindsay W. Carlton
Chase Private Client
Joyce E. Chelberg^{FC+}
Ricardo Chimal, Jr.
CME Group Foundation
The Comer Foundation Fund
Froilan P. Concepcion and Cecilia Concepcion^{C+}
A. G. Cox Charity Trust
Tina and Kermit^T Crawford
The Donnelley Foundation^{TF+}
The Duchossois Family Foundation
Alexis and Craig Eyler⁺
Hattie A. and Marie V. Fatz Foundation⁺
The Foland^T Family
Front Barnett Associates LLC⁺

The Robert E. Gallagher Charitable Trust	The Maxwell/Hanrahan Foundation	U.S. Department of the Interior, National Park Service	Mr. and Mrs. James M. Denny ^F	Ingredion Incorporated	Beverly and Stephen Pinaire
Mr. and Mrs. ^V Camillo Ghiron ^F	Andrew J. McKenna, Sr. ^F	Mr. and Mrs. John R. Walter ^F	Bob DiMeo and Terri DiMeo	Irish Woods Foundation [*]	The George and Mary Rabb Fund for Conservation ^F
Lyle Gillman ^{FD}	McKinsey & Company [*]	The A. Montgomery Ward Foundation, Bank of America, N.A., Co-Trustee	Thomas R. Doler ^F	Steven M. Isaac and Judy L. Olds ^F	Mr. ^T and Mrs. Scott A. Rafferty
Geoffrey Glass ⁺	Molex Incorporated	Mr. and Mrs. Robert E. Wood II ^C	Monica Donath	Edgar D. Jannotta, Sr. ^F	Helen S. Reed ^F
Alice and Richard Godfrey ^{FC}	Morgan Stanley	\$5,000 to \$9,999	Glenda W. Duncan ^F	Jeani and Rich Jernstedt ^F	Emily K. Ridley and Manuel Castro
Grainger	Mr. and Mrs. Thomas M. Mulcahy ^{F+}	Anonymous (4)	Eldred-Harland Charitable Fund at The Chicago Community Foundation ⁺	Judy Johanson ^{FCV+}	Dana Temple and Ralph Riggs
Grant Thornton LLP	Clare Muñana ^F	The Allyn Foundation ⁺	Susan ^V and Alexander Faurot ^{F+}	Charles L. Katzenmeyer ^{CE+}	Anita J. Rogers ^{F+}
Marguerite D. Hark ^{FC}	Nayar Family Foundation ^F	American Agricultural Insurance Company	Fellowes Brands	Mr. and Mrs. Eric Kauffman ⁺	D. Roskin
Mr. and Mrs. Matthew C. Harris ⁺	Mr. ^T and Mrs. Chris O'Herlihy	Birute J. Apke ^{FC+}	Barbara V. Fisher ^F	Brian C. Kocinski and Genevieve E. Hillis ^{C+}	Ryan Ruskin ^T and Michael Andrews
Dorothy Harza ⁺	Mr. and Mrs. Donald W. Patterson / The Warwick Foundation ^{F+}	Mrs. T. Stanton Armour ^{FD}	Judith A. Fitz	Martin J. Koldyke ^F	S&P Global
Robert D. Hevey, Jr. and Constance M. Filling ^C	PepsiCo, Inc.	Miah and Vernon Armour ⁺	Ginny and Peter Foreman ^{F+}	Mr. and Mrs. Frederick W. Langrehr ⁺	Sahara Enterprises, Inc. ⁺
Dr. and Mrs. Wayne J. Holman III ^F	Tanya and Michael Polsky	Laura Bader and Victor Sturm ⁺	The Philip M. Friedmann Family Charitable Trust	Joanne ^V and Richard Levy ^F	John P. Salvinio ⁺
Michael A. Leppen \ Miriam U. Hoover Foundation	Mr. ^V and Mrs. Mane E. Pritza ^F	Mr. and Mrs. Philip S. Beck ⁺	The Gehrke and Vanderson Family	Dr. and Mrs. Michael S. Lewis ^{F+}	Mr. and Mrs. Robert J. Sanborn
CJ Hughes ^{C+}	Jacqueline L. Quern ^{C+}	Mr. and Mrs. Harrington Bischoff ^F	Mr. ^T and Mrs. ^T James J. Glasser ^F	Mr. and Mrs. Robert Linn ^{C+}	Sargent Family Foundation ^{F+}
Lorraine M. Hurt and George M. Ingram ⁺	Gail and William Radzevich ⁺	David Bohan and Kathryn Kemp	Daniel J. Gocek and Lauren Conroy	The Loewenthal Fund at The Chicago Community Foundation ^F	Carol H. Schneider ^{FC}
IDEX Corporation	Rank + Rally	Bethany and Scott Brady	Mr. and Mrs. James P. Gorter	Patricia A. Malloy ^{FC}	Susan and Alan Sebulsky ⁺
H. Fisk Johnson	Mr. and Mrs. John W. Rutledge ⁺	Breakthru Bev Illinois	Donald P. Grasso	Mr. ^T and Mrs. Scott P. Marks, Jr. ^F	Mr. and Mrs. Richard J. L. Senior / The Morgan Senior Foundation ^{F+}
JPMorgan Chase Foundation ⁺	S&C Electric Company	Barb and Nathan Brown	Jean Greene ^{F+}	Marie A. Marotta ^{F+}	Charles & M.R. Shapiro Foundation, Inc.
Mrs. Noel Kaplan ^F	Dilara ^T and Yousuf Sayeed ⁺	Mr. and Mrs. Andrew W. Brown ^{F+}	Katherine L. Griem, MD ^{FC+}	Masco Corporation	Mr. and Mrs. Jeffrey S. Sharp ^{F+}
Kerry and Temp Keller	Karla Scherer ^{F+}	Ceres Foundation	Anastasia Gutting ⁺	Donna J. Matson and Robert W. Carpenter	Arch W. Shaw Foundation
Anna Marie and Jerry Kelly ^{F+}	Mrs. John Schlossman ^F	Mr. and Mrs. Paul S. Chatalas	Patricia and William J. Hagenah ^{FC+}	William B. McDonald and Ptah Sekhmat Osiris ^{F+}	Bessie Shields Foundation
Holly L. King	Mr. and Mrs. Richard H. Schnadig ^F	CIBC	Mr. and Mrs. J. Duncan Healy ^{F+}	Kennon P. McKee, PsyD ^F	Richard M. Skolly and Kate A. Feinstein ^{F+}
Kathleen and Dennis Klaeser ^{C+}	Marilyn L. Schweitzer and Michael A. Firman ^{FC+}	Pamela Conant	Mr. and Mrs. Patrick J. Herbert III ^F	Mrs. Hugo J. Melvoin ^F	Geoffrey Smith and Catherine Stewart ⁺
Laurie and Rich Kracum ^{F+}	Harriett Ann Sidoli ^{FC+}	Mr. and Mrs. George M. Covington ⁺	Mr. and Mrs. Thomas H. Hodges ⁺	Moller Family Foundation ^F	Margie ^T and Kevin ^T Stineman ^C
Mr. and Mrs. Robert R. Kunkler ^{C+}	Harriett Ann Sidoli ^{FC+}	Daphne and John Cunningham ^F	Hoellen Family Foundation	Peggy L. Morrow ^D	Mary and Harvey Struthers ^{F+}
Jorge M. Leon ^{T+}	Kass F. Sigal ^F	Judy and Tapas Das Gupta ^F	Heidi ^V and Richard Holm ⁺	Mr. ^T and Mrs. Leo F. Mullin ⁺	Mr. and Mrs. Brian R. Sullivan ⁺
Richard M. Levin ^T and Sally J. McDonald ⁺	The Siragusa Family Foundation	Dr. and Mrs. Lloyd Davidson ^{F+}	George Hrycelak and Sophia Welykyj ⁺	Gary Lincoln Neilson and Trudy A. Havens	Kathleen and Lawrence Sullivan ⁺
Levy Restaurants	Solberg Manufacturing, Inc.	Laura and Dave Davis ^F	Mr. and Mrs. J. Thomas Hurvis ^F	Mary Jane Nordlund ^{F+}	Sulzer Family Foundation
Marianne Lovink and Julian ^{TE} Siggers ⁺	Liz Stiffel ^{F+}	Karen and Bill Davis ^{C+}	Jill Hutchison and David Rosholt ^{C+}	Mark A. Oates & Family	Mr. and Mrs. Edgar L. Thayer ^{F+}
Susan H. Luciu	Judith B. Sugarman ⁺	Susan and Mark Dawson ^{FC}		Mr. ^T and Mrs. James J. O'Connor, Jr. ⁺	
Margaret B. MacLean ^T	Mr. and Mrs. John W. Taylor III ^{F+}			Dr. ^V and Mrs. William R. Parkhurst ⁺	
John W. Madigan ⁺	Helen and Richard Thomas ^F				
	Family and Friends of Hsi-Tsin Ma Tsiang / The Hsi-Tsin Ma Tsiang Fund				

Cheri and Michael Vaglienty	Helen V. Brach Foundation	Cherelynn A. Elliott ^C	Mr. and Mrs. Arthur Holzheimer ^{FC}	Peter Marks and Dorothy Mackevich Marks ^{F+}	Mr. ^T and Mrs. James J. O'Connor, Sr. ^{F+}
Anne Van Wart and Michael Keable ^C	Mr. and Mrs. Andrew W. Brown	Mr. and Mrs. Christopher Eperjesy	Mr. and Mrs. John L. Houston ⁺	Jamie C. Marshall and Richard Sobkowiak	Mary B. O'Neil
Ashley and Jordan von Kluck	Beth and Samuel Buchsbaum ^{F+}	Melissa Booth Fadim and James B. Fadim	Maria R. Hrycelak, MD ^F	Jennifer and David Martay ⁺	Virginia A. O'Neill
Rose and Robert Wagner ^{FC+}	Michelle and David Buck ^C	Sharon S. and William L. Feather	Ying Hsu and Donald R. Monson	Michelle L. Maton and Michael C. Schaeffer ^{FC+}	Openlands Project
Dilnaz and Qaiser Waraich ⁺	Mr. and Mrs. Theodore R. Butz / The Butz Foundation ^F	Judith Findorff ⁺	Laurie Huget and Werner Huget ^F	Mr. and Mrs. Charles R. Matthews	The Richard Laurence Parish Foundation
Everett S. Ward ^T and Iris K. Sims ⁺	Edward J. Calkins ^C	Mr. and Mrs. Peter D. Fischer ^{F+}	Mr. and Mrs. Christopher Hurley	McGuireWoods	Jo Ann and Joe Paszczyk ^F
William J. White ^{TF}	Michael and Melissa Canning	Mr. ^V and Mrs. Kenneth P. Fischl ⁺	Mrs. Robert C. Hyndman ^{F+}	McKee Family Foundation	Shauna Peet
April R. Wilson ^C	Guy T. Castino ^{FC}	Martha and James Foght ^{C+}	Pamela MacVicar Johnson ^F	Mr. and Mrs. Ronald R. McKee ^{F+}	Lorraine and Norman Perman ^F
Melanie R. Wojtulewicz and Tony Crowe ^F	Mr. and Mrs. John S. Chapman ^{FC+}	William Fotis and Sam Gentile ^{CD+}	Robert Bruce Johnson and Ann K. Eldred ⁺	Etta and John ^V McKenna ^{FC+}	Judith and Charles Pitman
Carole Wood and Carl Jenkins ⁺	Gay-Young Cho and Yu-Lam Christopher Chiu, MD	Wende Fox Lawson and Jim Lawson ⁺	Linda M. Jung ⁺	Jane C. McLagan ^F	Dr. and Mrs. Steven Potashnick ^{FC}
Mr. and Mrs. Kenneth J. Yager	Betty L. Cleeland ⁺	Deborah and Charles Frank	Kathleen and Alex Kallend	Deanne and John McLean	Mr. and Mrs. Charles S. Potter, Jr. ^F
\$2,500 to \$4,999	Sharon P. Cole ^{FC+}	Donna and Peter Freeman ⁺	Mr. and Mrs. William O. Kasten ⁺	Carlette C. McMullan and John Gibbons, Jr.	Andra and Irwin Press ^C
Anonymous (10)	James W. Compton ^{TF+}	Mr. and Mrs. Joel M. Friedman ^F	Anne Kavanagh ⁺	Mr. and Mrs. Charles P. McQuaid ^{FC}	Elizabeth T. Pyott ^{FD+}
Charles Adams Nature Research Foundation	Mark Crane ^{FC}	Mr. ^V and Mrs. Glenn L. Gabanski ^{FC+}	Janice Kaye ^{FV}	Elisabeth C. Meeker ^F	Quarles & Brady, LLP
Mary Claire and Doug Allvine	Mr. and Mrs. Kenneth W. Dam ^F	Gretchen M. Gillis and Dr. David R. Cook ^{C+}	Mr. and Mrs. Kenneth C. Keller ⁺	Withrow W. Meeker ^F	Mary Quigg ^{C+}
Rodney Austin ⁺	Rebecca E. Deaton	Nika Gloyeske ⁺	Mr. and Mrs. Eric Kennedy	Pamela L. Miles	James A. Radtke and Susan A. Kressin ^{FC}
Lorraine and Randy Barba ^{FC+}	Cheryl and Michael Del Campo	Donna and Roger Godel ^{C+}	Becky and Lester Knight ^C	Mr. ^V and Mrs. ^V Robert R. Moeller ^F	Mr. and Mrs. Robert Raimondi
Mr. and Mrs. Aaron A. Barlow	Jill and Robert Delaney ^F	Teresa Kang and John Goerner	Dr. and Mrs. Barry Kohl ⁺	Montenegro, Inc.	Ginevra ^E and Ben Ranney ⁺
Martha and James Barrett	Mr. and Mrs. James W. DeYoung	Delta A. Greene ^F	Little Lion ⁺	Cynthia A. Moody ^{FC}	Nancy Ranney
Verna L. Baughman, MD ^F	Anne and Joshua Dickemann	Joyce and Timothy ^V Greening ^F	Ka Yee C. Lee ^T and Thuong G. Van Ha	Lisa and Jerry Moore ⁺	Robert and Barbara Ann Richards
Helene Beisecker and Jean Ann White ^{F+}	Janet W. Diederichs ^F	Dr. and Mrs. Daniel Grossman ⁺	Dana and Larry Linden	Jennifer and Brad Morehead	Jack Ringer Family Foundation
Deborah A. Bekken ^E and Richard G. Kron ^{C+}	Richard and Janice Domanik ^{FC}	Robert L. Grzywinski ^{C+}	Locke Lord LLP	Mr. ^V and Mrs. John V. Morris ^C	Mr. and Mrs. Steven A. Rosen
Margaret S. and Philip D. Block, Jr. Family Fund	Carolyn K. Donaldson and James S. Donaldson	Esther R. Hankin ^{F+}	Loeb & Loeb, LLP	James Murphy ⁺	Robert A. Rosholt and Sharon L. Brunelle
Shaun and Andy Block ^F	Tara Dunn and Michael Peroski	Irving Harris Foundation	Mr. and Mrs. Jordan Lowe	Alexandra C. and John D. Nichols ^F	Mr. and Mrs. Jeffrey S. Ross ^F
Mr. and Mrs. Philip D. Block IV	Mignon W. Dupepe and John B. Snyder, Jr.	Mr. and Mrs. Dean M. Harrison	Ilene and Lawrence Lubell ⁺	Donna Lee Owens and Megan Owens ^F	Susan B. Rubnitz ^F
The Bloom-Kessler Family	Thomas ^V E. Durica and Susan Jacob	Dawn and Ted Helwig	Thomas T. Macejko, Jr. and Amanda Maw Macejko	Mary C. Niehaus and Sanjeev Pandey ^{F+}	Charles ^V Ruedebusch and Linda Flack ^F
Bloomberg Philanthropies	Jon Ekdahl and Marcia Opp Ekdahl ^{FC}	Kimberlee S. Herold ^C	Mr. and Mrs. Alan J. Magerkurth ^{C+}	James H. Niehoff and Jolie R. Macier ^{FC}	Buzz Ruttenberg ^F
Hyacinth and Le Monte ^E G. Booker, Sr. ⁺		Mr. and Mrs. John L. Hines ^{F+}	The Louise and Elizabeth Manke Foundation / Irene C. Manke ⁺	Jennifer and Craig Niemann ^C	Sage Foundation
Mr. and Mrs. John J. Borland, Jr. ^F		Peggy L. Hoberg ^F	Todd Christopher Marek and Vana Thayu	Christina J. Norton and John A. Biek ^C	Salesforce.org, Inc.
					Barbara M. Schleck and Gary M. Ropski ^{FC}

Mr. and Mrs. Stephen E. Schmitt ⁺	Anita and Thomas Veldman ^C	Margaret B. and Harry Axelrod Charitable Trust Fund	Nathaniel Purdy Clapp	Pamela Geyer and John Mehegan	Carolyn and Paul Jarvis ⁺
Karen and Frank Schneider ^{FC}	The Vitale Family Foundation Inc. ^F	Mr. and Mrs. William E. Bach ^{C+}	Judy and John Coletta ^F	Julie and Greg Goff	Mr. and Mrs. Andrew M. Jessen
Barbara and Thomas Schnitzer ^F	Kathleen D. Vogt ^{FC+}	Alben F. & Clara G. Bates Foundation ⁺	Janice and Michael Coren	Mr. and Mrs. Stanford J. Goldblatt ^F	Dr. Carrie Kamp and Dr. Timothy Kamp
Suzanne and Kenneth Schulte	The Humanist Fund ⁺	Mrs. James N. Bay, Jr. ⁺	Mr. and Mrs. Patrick Corrigan ⁺	Walter and Karla Goldschmidt Foundation	Tom Kay
Richard and Barbara Schultz	Irish Woods Foundation	Elizabeth Anne Beal and Neil Stempel ^C	Mary and Jim ^V Costello ^F	Felipe R. Gonzalez and Kathleen Courtis ^{C+}	Melissa and Dennis Kelly ^{F+}
Marilyn C. and Stephen A. Scott ^{FC+}	Mr. and Mrs. Douglas H. Walter ^F	Dana and Ron Benedict ^C	Bill Cox and Mary Noble	Google ⁺	Julian C. Kerbis, PhD
Mrs. Stephen H. Sentoff ^F	Paul Waters and Nancy Bugajski ⁺	Carrie and Eric Benson	Professor ^T and Lady Peter R. Crane	Elizabeth M. Gordon	Heidi Kiesler
Sally Sharp	Jane Wells and Burton Ferrini ^{F+}	Betty ^V Bergstrom and Gerald Talsky ⁺	Liz Davidson and Charles Custer ^F	Mr. and Mrs. Daniel R. Greenberg	Carissa Ritner and Jared King ⁺
Mr. and Mrs. Neil J. Sheehan ⁺	Katherine T. Donaldson and Ryan B. Whitacre	Yee Man and Lars Bergstrom ⁺	Rebecca J. Davidson ^{FD}	Mr. and Mrs. Daniel R. Gruber ^F	Mary Kirby
Pam and Tom Sheffield / JS Charitable Trust ^F	Raymon F. Whitney ^F	Sarah Bermingham and Bill Connor ^{C+}	Richard L. Dees and Nora Flint	Mr. ^T and Mrs. Lewis S. Gruber ^F	Mr. and Mrs. Adam Klauber ^C
Timothy C. Sherck ^{C+}	Lynda W. Williams, PhD and Norman J. Williams ⁺	Mr. and Mrs. Michael A. Bilder	Nancy Dehmlo and Cameron Dehmlo Dunne	Suzanne M. Gylfe ^C	Mr. and Mrs. Timothy P. Knight
Anne Slade	Claudia L. Winkler ^{FV}	The Birck Family Fund	Lidia B. Devonshire ^F	Dr. and Mrs. Christopher Hagenah	Mr. and Mrs. Norman A. Koglin ^F
Elizabeth L. Snyder ^{FC}	Mr. and Mrs. William E. Wolf	Anne Marie Mitchell and John Bistolfo ⁺	Amy T. Dickinson and Jim Futransky ^{FC+}	Dana and John Hagenah ⁺	Mr. and Mrs. Robert D. Kolar
Tom E. Sourlis ^F	Barbara and Alain Wood-Prince	Carlene M. Blumenthal ^D	Dr. and Mrs. John R. Dimar II	Michael Hammerman ⁺	Mr. and Mrs. Glenn A. Kolososki
The Sparacio Family	Nancy G. Wulfers ^{F+}	Peggy and Paul Bodine ^F	Julie Dorfman and Jerry Herst	Mr. and Mrs. Thomas Hammerman ⁺	Karen and Mark Koten ⁺
Kevin L. Stoeckel and Emily Heisley Stoeckel	Colleen B. Yale and Michael R. Yale	Thomas E. Brea ^C	Mr. and Mrs. Harvey Dulin ^{F+}	Ruth Harmon ^C	Donna La Pietra and William H. Kurtis ^{TF+}
Audris Shirley Wong and Lars A. Stole, PhD	Irene Young and Matt Bayer	Joell and Robert Brightfelt	Mr. and Mrs. Timothy K. Earle ⁺	Mattie H. Harris ^{FV+}	Susan D. Lannin and Albert F. Ettinger ^{F+}
Ivan G. Strauss ^{F+}	Felix Yuansi Huang and Joshua Lau ⁺	K. Brooke and Jean-Claude ^T Brizard	J. Thomas Eller ^{F+}	Beth and David Hart ^F	Jan ^V and Richard ^T Lariviere
Steven Strohmeier ^F and Josie Brown ⁺	\$1,000 to \$2,499	Sophia Bross	Denise Stewart and George Engeln	Beverly and Warren Hayford ^F	Sherri and Michael Leahy ^{FC+}
Studio Institute, LLC	Anonymous (19)	Alison and Owen Brown	The Donald Ephraim Family Foundation	Barbara J. Hebda ^{FC}	Barry Lesht and Kay Schichtel ^{F+}
Linda J. Swanson ^{F+}	Dora and John Aalbrechtse ^{C+}	Nancy and William Brown ^{F+}	Dorothy L. Eshbaugh	Alicia Hernandez	Mr. and Mrs. Donald J. Lewis
Daniel Tierney and Anke Faber	Dianna Adelberg	Mr. and Mrs. Robert N. Burt	David Fenter ^{C+}	Carolynne and Scott Hertenstein ^F	Jonathan W. Littman, MD ^V and Audrey Lynne Strode ^{F+}
Jacqueline and Glenn Tilton ⁺	Dr. Martins A. Adeoye ⁺	The Achnacarry Foundation / Lenore and Douglas Cameron ^F	Sally Fletcher ⁺	Mr. and Mrs. Fred Holubow ^F	Sarah A. Lofgren and Thomas E. Lofgren ^{C+}
Tiny Tiger Foundation, Inc. ⁺	Mrs. John J. Ahearne ^{F+}	Dave and Catherine Cappello	Mr. and Mrs. C. Luther Fors II	Janice L. Honigberg ^C	Sherry and Melvin Lopata ^{FC}
Mr. ^T and Mrs. David M. Tolmie	Joseph O. Alford ⁺	Mr. and Mrs. Walter S. Carr	Adrian R. Foster ^C	Michael Huether ^C	Louis and Nellie Sieg Fund
Dr. Alysia and Mr. Daniel Townsend ^{C+}	Algonquin Area Public Library District	Margaret Edna Graham Caswell and Randy Holladay	Mr. and Mrs. ^D Earl J. Frederick ^F	PJ and Abby Huizenga	Patricia S. Lucas ^F
Mr. and Mrs. James A. Tuchler ^{F+}	AMSTED Industries Foundation	Caterpillar Foundation	Lisa Friedheim	Susan and Tex Hull ^{FC}	Judith L. Macior ⁺
Catherine and Joseph Uhrich ^{C+}	Charles F. & Lillian F. Appel Charitable Trust	Chicago Ornithological Society	Joanne Benazzi Friedland ^F	Rex M. Hunt ^{FC+}	Susan and John Major Donor Advised Fund at Rancho Santa Fe Foundation
Shiju Varghese and Christina Chamakala	Richard Assmus and Leah Welty Assmus	Emily and Jason Ciaglo	Dr. Sylvia E. Furner ^{V+}	Patricia J. Hurley ⁺	Holly Marihugh and Kris Denton
			Paul Gearen ^{C+}	Elizabeth and Craig Hutson	
			Mr. and Mrs. John E. Gepson ^{F+}	Datin Tan Fui Lian and Dato Dr. Robert F. Inger ^{FD}	
				Cheryl and Jeff Jackson ^C	

Adele Martel, MD, PhD and Roland Martel	Donald R. Oder ^{FC+}	Mr. and Mrs. Reuben E. Slone	Mr. and Mrs. Eric D. Wanger	AmazonSmile ⁺	Mr. and Mrs. Charles S. Boone ^{C+}
Mr. and Mrs. Emil J. Martinec ⁺	Katherine L. Olson ^{F+}	Maureen Dwyer Smith and Edward Byron Smith, Jr. ⁺	Robert Wanger	Richard and Andrea Amend ^{F+}	Mr. and Mrs. Robert B. Breisblatt ^F
Mr. and Mrs. Christopher Martinez ⁺	Link E. Olson	Mary L. Smith ^{T+}	Ann Wasoff ⁺	Becky and Andy Anderson	Linda and Michael Bresolin ^F
Mr. and Mrs. Robert G. Mc Cann ^{FC+}	Ronna J. Page ^{F+}	Mr. and Mrs. Randy Smith	Mr. and Mrs. David B. Waud ^{F+}	Deb and Darrell Anderson	Laural Briggs and Tim Scale ^C
Sean McCallum	Helene and Aaron Paris	Christina and Robert Smolen ^{FC}	Carrie and Jay Weaver ^C	Gregory M. Anderson ⁺	Mrs. Cameron Brown ^{F+}
Meghan E. McCloud ⁺	Jeffrey C. Pattee ⁺	Mary Ann So Ngan ^D	Julia A. Weertman and Nic Zerebny	Linda Anderson	Mr. and Mrs. Steven L. Brown ^F
Bess-Catherine and James McCord ^{F+}	Robert Peretti and Quaylin Peretti ^{C+}	Solot and Karp Family Foundation	Megan and William Weiland ⁺	Dr. Glenn A. Arakaki	Ulrike and Thomas Brucks ⁺
Dr. and Mrs. Randall K. McGivney ⁺	Abigail Perkins ⁺	Mr. and Mrs. Jeffrey Sommer	Mr. and Mrs. Bartholomew Weldon	Ruth Archer and Jim Helke ^{F+}	Mr. and Mrs. Thomas Buck
Mr. and Mrs. Lester H. McKeever, Jr.	Bonnie S. Peters	Mr. and Mrs. Scott E. Sommer	Mrs. Henry P. Wheeler ^F	Caesar F. Armenta ⁺	Moirra and Howard Buhse, Jr. ^F
Patricia M. McKiernan	Mr. and Mrs. Andrew H. Shaw ^F	Kathy and Ronald Sonenthal ⁺	Andrew J. White and Lauren M. Batterham ⁺	Suzanne Averill	Mr. and Mrs. Paul Butera ⁺
Leslie Gantz McLamore and Scott McLamore	Summer and Allan Pixton	Mr. and Mrs. Scott E. Sommer	Bennie E. Whiten, Jr. and Susan E. Spote ^{C+}	David Babin	Judith A. Caloud ^{F+}
Mary and James McShane ⁺	Mr. and Mrs. Paul C. Poy ^{FC}	Faith H. Spencer and Mark Parts ^F	James L. Wilson and Pamela Diane Toler	Richard P. Bail and Janice G. Bail ^{FC}	Dr. Rebecca Cannon and Dr. Scott Miller ^C
Erma S. Medgyesy ^F	Ying Rao and Guorong Liu ^{C+}	The Stebbins Fund, Inc. ⁺	Joseph Wolnski and Jane Christino	Joy L. Bailey	Kathleen E. Carbonara and John P. VerBockel ^{F+}
Anne L. Metcalf ^C	Roberts Family Foundation ^F	Leon and Cynthia Stecher ^{F+}	Kenneth A. Youga and Anita Jean	Ann Balusek	Robert E. Carroll and Rosemary B. Carroll ^{FC}
Mr. and Mrs. Carl E. Moore, Jr. ^F	Mr. and Mrs. Richard M. Rosenberg ^F	Jessica and Erik Steffensen ⁺	Janice C. Young	Marguerite and Christopher Baran	Mr. and Mrs. M. Blouke Carus ^F
Mary K. Moreland and Daniel T. Jenks ^F	H. Nelson Rowley III ^F	Edna M. Stewart ^{FD}	Mr. and Mrs. Daniel T. Zagorin	Dr. and Mrs. Robert A. Beatty ^F	Kathryn and Wilfred Chapleau ⁺
Helga E. Muench ^{FC}	Judith F. and Thomas D. Rutherford ^F	The Stirling Charitable Fund / Mr. and Mrs. James P. Stirling	Mr. and Mrs. Phillip C. Zarcone	William T. Beck and Doreine Carson ^{F+}	Michael Beem
Mr. and Mrs. James G. Murphy ^{FC+}	Carrie Ruzicka	Louis C. Sudler, Jr. ^C	Mr. and Mrs. Robert Zentner	Mr. and Mrs. Donald A. Belgrad ^F	Matthew Benoit and Cathleen Dohrn
Margaret A. Myers and Ronald J. Krumm	Cynthia Scalzo and Henry Brown ⁺	Patricia S. Sullivan ^F	Christine C. Zogus ^C	Mr. and Mrs. Robert A. Benziger ⁺	Mr. and Mrs. Robert A. Benziger ⁺
Charles F. Nadler, MD ^F	Susan D. Schlough and Andrew D. Abbott, PhD ^{F+}	Sally and David Swenson	Dr. Mark H. Zornow ^{FC}	Herta Bernhard	Cinda Berry and Arthur Krumrey ⁺
Mrs. Earl L. Neal ^{F+}	David and Judith L. Sensibar ^F	Mr. and Mrs. Nathan Tarcov		Lynn J. Besser ^{CD+}	Lynn J. Besser ^{CD+}
Mrs. Kenneth Nebenzahl ^F	Glenn Curtiss ^D and Margaret J. Shaffer ^F	Richard Thayer ⁺	\$500 to \$999	Suzanne and William Bible ^{F+}	Suzanne and William Bible ^{F+}
Mr. and Mrs. Jonathan B. Newcomb ^F	Tracey Shafroth ^F	Mitch Theys	Anonymous (22)	Mr. and Mrs. Richard B. Black ^{F+}	Mr. and Mrs. Richard B. Black ^{F+}
Lora Nickels and Thomas Tague ⁺	Louann Shaner	Lynda Thoman ⁺	Roger S. Adamek ^{F+}	Mr. and Mrs. James P. Bloom ^{C+}	Kathleen M. Boege ^T
The Nitecki Family In Memory of Matthew Nitecki ^{CV}	Kate M. Sheehy ^{C+}	Peter Tigues ⁺	Anthony Adams and Kara Breems ^{C+}	The Boeing Company	Alexandria D. Bond ⁺
The Gerald Norton Foundation	Elizabeth Shepherd and Scott Kinsloe	Dr. and Mrs. Michael M. Todd ^{FC+}	Barbara Stolberg Adelman and Steven Adelman ^F		
David and Carolyn Nyren	Nikki and Mark Shields ^{C+}	Mr. and Mrs. Richard Uihlein ^F	Jessica and James Ahn ⁺		
	James V. Shipp and Nancy Marie Casper ^{F+}	Theodore M. Utchen ^{D+}	Anirudh Ajith ⁺		
	Shure Incorporated	Peter M. Vale ^{FC}	Shelley Torres and William Aldeen ^F		
	Sidley Austin LLP ⁺	Barbara G. Van Cura ^F	Elizabeth Allen ⁺		
	Dolores Silverman	Ryan VanHolsbeke	Celia Althage		
		Mary and Jim Viereggs ^{F+}			
		Austin J. Waldron ^{CV+}			

Nancy A. Corral	Nancy and Dan Engel	Kristie Grzywinski
The Honorable Barbara Flynn Currie ^{FC}	Gary L. Eppling ^C	Mr. and Mrs. Ismael Nuñez
Robin Currie and Robert Beeching	Patricia and Charles Erickson	Mirja Spooner Haffner
Mary Cygan and Francis Bruey [*]	Tomas Espinosa	David C. Hale [*]
Michele Daniel [*]	Mr. and Mrs. David P. Facklam ^F	William M. Hales Foundation
Mr. and Mrs. John A. Daniels ^{F+}	Diana H. Fagan	Sophia H. Hall ^{F+}
Laurie and Bruce Davidson	Vanessa Fagundes	Dr. and Mrs. George S. Hallenbeck
Susanne and Kent Davis ^F	Mr. and Mrs. Terry M. Faulk	Bruce Hamburger ^{C+}
Diana L. DeBoy ^{F+}	Amy M. Fielek ^C	Dayan and Steve Harlamert
Laney Deckrow	Amy and Cameron Findlay [*]	Joyce E. Heidemann ^F
Alex Dehgan and Kara Stevens [*]	Dr. and Mrs. Neil A. Fine, Sr.	Paul Heinzman [*]
Mr. and Mrs. Matthew C. Deromedi	Geoffrey A. Flick ^{F+}	Mr. and Mrs. Paul M. Herkes ^{F+}
Bailey and Kevin Desai	Dr. Lewis Flint [*]	Jacob Granison Hill [*]
Donna Diamond	Dorothy M. Flisk	Lisa and James Hill II ^{C+}
Sandra and Jonah Dipane	Kyle G. Fonjemie [*]	Melissa Hilton and Jonathan Perman ^{F+}
Caroline Dixon and Javier Rivera	Elizabeth Foster ^{C+}	Mr. and Mrs. C. Clarkson Hine
Barbara and David Dodson ^{C+}	Mr. and Mrs. Francis G. Foster, Jr. ^F	Mr. and Mrs. Richard M. Hirsch ^{F+}
The Drake/Koerner Family [*]	Susan and Paul Freehling ^{FC+}	Carol Honigberg [*]
Patricia J. Dryer [*]	Gwendolyn and John Gage ^{FC+}	Jaap Hoogstraten ^{E+}
Apiwatch Duangjan and Peerada Sudlapa	Elizabeth Gardham [*]	Mr. and Mrs. Thomas Hopkins [*]
Mr. and Mrs. Richard F. Duffy	Leslie J. Gardner	Mr. and Mrs. William S. Hoppe
Ralph P. Earlandson ^{FV}	Zephyr Gault	The John C. Hover Foundation, Inc.
Glenna R. Eaves and Christopher J. Boebel ^{FC+}	Dr. and Mrs. William Gilligan	Mr. and Mrs. Douglas Hubbard [*]
Theodore Eckert Foundation	Elizabeth and Kristof Gleich	Thom Hund and Judy L. Hund
Mark C. Egan and Katherine Z. Egan ^F	Tia P. Glunz	Pamela and George Hunter
Thomas Egan	Paula A. Golden ^F	Aliya and Syed Husain [*]
Chris Eisenberg	Mr. and Mrs. David B. Golder	Jessica India
Mr. and Mrs. Phillip L. Elbert	Katherine Gory and Nicolas Rathert	Kristen and Josh Jacobs
Victoria and Thomas Eley III ^F	Terry Grace and Judith Gaietto-Grace ^{F+}	Thomas Jacobson and Ramone Munoz [*]
Mr. and Mrs. Charles Emmons, Jr.	Michelle Grant Ervin, MD and Christine Ervin, MD	Deborah Johnson and Angela Nesci [*]
	Janice Greenberg Ellinwood	
	Dr. Donna Greenberg	
	Noel R. and Michael Grego ^F	
	Mary M. Grobarcik ^F	



Field Museum presents **first-ever joint Parker/Gentry Award**

The Museum presented the 26th Parker/Gentry Award to the Fort Belknap Indian Community and American Prairie Reserve (now American Prairie) for their efforts restoring the imperiled Northern Great Plains. From their lands in northern Montana, the Fort Belknap Indian Community of the Nakoda (Assiniboiné) and Aaniiih (Gros Ventre) Nations is a leader in returning prairie wildlife to the region. American Prairie is creating a multi-million-acre protected corridor in Montana that will be the largest of its kind in the contiguous United States. During the ceremony, awardees and guest speakers transported those in attendance to Big Sky Country with stunning imagery and poignant stories. The impact tribal members have had on the worldview of American Prairie and other conservation partners in the region was evident. Another highlight of this year's celebration was a congratulatory letter from US Secretary of the Interior Deb Haaland, the first Native American to serve as a cabinet secretary.

(Above) The Tribes of the Fort Belknap Indian Reservation are leaders in restoring imperiled prairie wildlife, such as black-footed ferrets, to the Great Plains. They view wildlife as a part of their family and restoring these populations signifies a return home.



Nelson Rowley III's mollusk collection

On April 1, 2021, approximately 100 plastic bins were delivered to the Field Museum's Invertebrates Collections. This was, however, no April Fools' Day joke. The bins contained a first-rate collection of mollusk shells. It was donated by the collector, Nelson Rowley III, who had been a shell aficionado for decades. As he was preparing to relocate from Chicago to Arizona, he decided that it was the right time to gift the collection to the Field Museum. In the past, Nelson has supported the museum's Invertebrates Collections and, most recently, with his collection of mollusk-related books.

The collection contains an estimated 2,500 specimens representing 1,500 species. The majority of the shells are of marine origin, but there are also several freshwater and terrestrial species.

(Above) Some shells from the Nelson Rowley collection, including cone shells, cowries and an extraordinarily large slitshell.

Renee and George Johnson	Ruta and Mitchell Krawczyk ^{C+}	Carol Ann Macola ^{FC}	Ken Metcalfe ⁺
Mr. and Mrs. James M. Johnson ^F	Jennifer M. Krejci ⁺	Grant MacSwain and Tracy MacSwain	Charity Meyers
Char and Jerry Johnson ^F	Mr. and Mrs. Lee V. Kremer ^F	Stacie and Matthew Maddox	Catherine E. Miller ^{E+}
Maryl R. Johnson ^{FC}	Mr. and Mrs. James R. Krick	Mr. and Mrs. Michael S. Magnuson ⁺	Mr. and Mrs. Craig A. Miller ⁺
Sara and Ty Johnson	Mary K. Krigbaum and Patrick Fitzgerald ^F	Colette Malone and Pat Casey ⁺	Karen L. Miller ^F
Kathleen G. Kallan ^{FC}	Mr. and Mrs. Walter W. Kurczewski ⁺	Nina Mann	Judith and Thomas Monroe ^{E+}
Mr. and Mrs. John A. Karoly ^{FC+}	Paige LaCour ^{V+}	Gabriel Marchan ^{C+}	Martha Montes and Amanda Montes
Diane S. Karzas ^{F+}	Dr. and Mrs. Peter Lagios ^{C+}	Lida and William Marcyniuk	Beverly J. Moody
Laurel and John Kasang ^{FC+}	Deanna Laidler ⁺	Sylvia and Lawrence Margolies ^{FC+}	Edwin and Marcia Moore ^{C+}
James Kaskas ⁺	Eric LaMora and Gilbert Campillo	Cynthia Mark-Hummel and John Hummel ^{F+}	Diane and Jim Moore ^C
Gavlin Family Foundation	Bruce Lander	Mr. and Mrs. David I. Markovitz	Susan and Thomas Moran ⁺
Alice Keane	Mr. and Mrs. Dirk B. Landis ^{FC+}	Susan and Marco L. Martinez	Brittany G. Morgan ⁺
Mr. and Mrs. Michael G. Keck	Enoch Lau	Mr. and Mrs. Richard P. Mayer ^F	Joyce and Rick Morimoto ^{FC}
Samantha and Brian Kelly ⁺	Anita F. Lees ^C	Heidi and Gregory Mayer ^F	Naomi Morris ^{FC}
Jamie M. Kelly ^{E+}	Glenn Lefkovitz	Mr. and Mrs. Raymond McBride ^F	Vijai K. Moses and Sunshine Mitchel ⁺
Katharine J. Kelly ^{FC}	Mr. and Mrs. Sigmund Lefkovitz ^F	Susan and John McBride	Mr. and Mrs. Kurt M. Mueller ^{F+}
Mr. and Mrs. William H. Kelly, Jr. ⁺	Legion of Vikings and Valkyries	Mr. and Mrs. Mark J. McCarville ^F	Gregory M. Mueller ^{F+}
Gina B. Kennedy ^C	Mr. and Mrs. Raymond Leuthold ⁺	Lisa McClung and Blasko Ristic ^{F+}	Mr. and Mrs. James Mulshine ⁺
MaryAnn Khan ^{V+}	Mr. and Mrs. John G. Levi ^F	James McCormack and Evelyn Zatkoff	Janet Murphy ^F
Mr. and Mrs. T. Eric Kilcollin ^F	Charles N. Lindsey and Zikri Yusoff ^F	Lauren and James McCourt	Mr. and Mrs. James Murray ^{C+}
Patricia and Robert Kilinskis ^C	Mr. and Mrs. Bert H. Lindstrom ^C	Mr. and Mrs. Jeffrey R. McDonald	Mr. and Mrs. James W. Myers ^{FC}
Alena and Simeon Kim	Paul Littlejohn ^C	Elizabeth and John McDonald ⁺	Demetria Nanos Jones and Kenneth Jones
Lynne King Roberts ^F	Mary Martin and Scott Lowe ⁺	Courtney McGovern ^C	Mr. and Mrs. Joseph Navarre ⁺
Margaret and Thomas Kittle-Kamp ^F	Robert J. Lueders	Gloria L. McMillan ⁺	Cynthia and Thomas Neal
Catherine and Douglas Knuth ^F	The Lumpkin Family Foundation / Candelario and Elizabeth Lumpkin Celio	Mr. and Mrs. John B. Meehl ^{C+}	Mr. and Mrs. Neil C. Nelson ^F
Mr. and Mrs. Paul N. Koch ⁺	Mr. and Mrs. Robert W. Lynch ^F	Joyce Meggett	Gerald Newman ^C
Mr. and Mrs. Melvin J. Koenigs ^{FC}	Lenore L. and William S. Macdonald ^{F+}	Steven A. Melnyk, MD ^{F+}	Marjorie and Christopher Newman ⁺
Mr. and Mrs. John E. Koliopoulos ^F		Kay and Robert Merrick ⁺	John Nguyen ⁺
Stanley L. Korwin and Nancy J. Hall			Eleanor A. Nicholson ^{FC+}
Holly and Kelly Kost ⁺			Alice Niziolek and Kathy Curran ⁺
Kris Kramer and Cora Kramer			A. J. Nocchiero ^F
Mr. and Mrs. Jeffrey M. Krasner ^F			Margaret Norman

Leslie and Richard North	Shanna Quinn ⁺	Susan H. Schwartz ⁺	Deborah and Steve Stefani	Matthew J. von Konrat ^E and Genea Pitts ⁺	Mr. and Mrs. Roger Alva
Stephanie and Bernhard Ortel	Helene and Norman X. Raidl ^{FC}	Mr. and Mrs. Stevan F. Schweighardt ⁺	Conrad Steinmeyer and Randy Stetinmeyer	Belle Waldfogel and Georgian Goldenberg ^{FC}	Renata C. Alves-Nessinger
Barbara and Alan Oshita ^{C+}	Dr. and Mrs. Mark A. Ratner ^F	Elizabeth and Richard Sciortino	Ann Marie Stephenson ^C	Fred K. Walz ^{F+}	Keri Ambrosio and Matthew Johnson
Lois Rainey Owens and Kimberly Dawn Owens ^{F+}	Dr. and Mrs. Timothy W. Raykovich	Olivia J. Scully ^F	Amy and John Stevens	Carol Watkins	Mr. and Mrs. John R. Anderluh ^F
Mr. and Mrs. Raymond Palascak	Dr. James T. and Carolyn M. Read ^{C+}	Francine Scully-Lippitz and Herbert Lippitz	Dawn K. Stiers	Thomas Way ⁺	Bonnie J. Andersen
TJ and Sharon Palmer ^{C+}	Sigrida Renigers and Astra M. Patrick ^{F+}	Jessica and Paul Seet	Mr. and Mrs. James L. Streibich	Mr. and Mrs. Greg Webb ^{C+}	Mr. and Mrs. Carl Anderson ⁺
Dr. and Mrs. Pat Pappas ^{FC}	Terry Rettberg and Richard Rettberg ⁺	Geri and Paul Seidenstricker ^C	Usha Subramanian and Deepak Raghunathan	Leonard L. Weber	Mr. and Mrs. Craig A. Anderson ^F
Eleanor Parker ^C	Claudia Richman	Pradip Sethi and Kiran Frey ^{F+}	Mary Pat and Kirk Sullivan ^C	Julie Weisler	Allison and Dwayne Anderson ⁺
Elaine and Frank Parker ⁺	Abigail L. Ristow ^E	Amy Sexton ⁺	Julie Summers	Mr. and Mrs. Steven A. Weiss ^F	Judith W. Anderson ^{F+}
Scott R. Pattullo and Jenny A. Johnson ^C	Jeanette Rodriguez ^{CE}	Lining Yu and Dr. Zheng Shen	Loretta B. Sweeney ^{F+}	Carolyn M. White ^{FC}	Mary and Paul Anderson ^F
Christopher D. Paulos	Amy B. Rogaliner ^E	Shirley C. Shriver ^{F+}	Mr. and Mrs. Casmir Szczepaniak ^F	Willard E. White, PhD ^{FC+}	Anita Andren and Lennie Naughton
Jennifer A. Pavelec	Heather and David S. Rose	Dr. Paul R. Sievert	Mr. and Mrs. John Tamisiea ⁺	Sonja and Nathan Will	Ophelia and Haroon Ansari, PhD ⁺
Patricia and Christopher Pavnica	Rosenson Foundation ^F	Mr. and Mrs. Alejandro Silva, Jr.	Christine and Kenneth Tanaka	Amy and Chad Williams ⁺	Scott R. Anselmo ⁺
Frederic Pearson ^F	Mrs. Stephen W. Rothermel ^{F+}	Ilene Simmons ^{FC+}	Tang Research Foundation	Mr. and Mrs. Gary Wilson	Jan Marie ^V Aramini and Michael Pettersen
Aurie A. Pennick, Esq. ^T	Alan Rottman and Gabriela Ruiz	Sharon Simmons	Mr. and Mrs. J. Hall Taylor II	Carl Wolf and Jennie Sochon ^F	Mr. and Mrs. Joshua Arlow
Sheldon James Perlow and Sandra J. Allen	Anna and Keith Ruskin	Jon Skaggs and Jamie Kadar ^C	Steven F. Tempel and Deborah Zekich ^{F+}	Kay and David Wulf ^{FC}	Mr. and Mrs. Bruce T. Armstrong ^F
Rebecca and David Perry ⁺	Noreen and James Ryan ^{C+}	Margaret Skrmetti and Jerel Bangayan ⁺	Chad Thomas and Virginia Thomas	Ryann Yellin	Dorsey Armstrong and Paul Schneider
James W. Peters	Tricia and Matthew Rydson	Maureen M. Slavin ^F	Margaret Tomaszek-Witry and Lawrence Witry ^F	F. William Zandrew ^V	Dr. Constance Arnold and Mr. Daniel Arnold
Karen Peters ⁺	Christina M. Sakowski ^{F+}	Charles R. Sleezer	Travelers	Mr. and Mrs. Hugh Zentmyer	Mr. and Mrs. Fernando Arriola
Mr. and Mrs. Jeffrey Pfluger ⁺	Vicky Sanchez, ^E Juan Perez and Family ⁺	Geraldine Smrcina	Sally L. TreKell ^{FC}	Zigterman Family Trust ^F	Jacqueline Arroyo
Mr. and Mrs. Thomas D. Philipsborn ^F	Peter F. Saunders and Patricia J. Larson ⁺	John M. Snider	Mr. and Mrs. Barton G. Tretheway ^{F+}	Linda and John Zimnie ⁺	Ann G. Ash ^{F+}
Mr. and Mrs. Burt Pickard- Richardson ^F	Melissa Savage and Gregory Savage	Ann and John Snyder ^F	Liona and Ryan Trombly	Mr. and Mrs. Edward J. Zulkey ^{FC+}	Tein Atkerson and Claire Atkerson
Mr. and Mrs. Louis R. Pignotti, Sr. ^F	Leslie J. Sawyer	Joseph and Scott Solis	Marla J. Tucker ^F	Rebecca and Anub Abraham	Charlene Atkinson-Raelson
Mr. and Mrs. Walter J. Plank ^F	Julie and John Schaff ⁺	Keith Solomon and Elana Beckerman	Mr. and Mrs. Dominic P. Turchi, Jr. ^{FC+}	Gabriel Acinapura and Elizabeth Dyer	Mr. and Mrs. Brett A. August ^F
Claire Poelking ⁺	Dr. and Mrs. Morton O. Schapiro ^C	Michelle Sotak ⁺	Mr. and Mrs. John L. Turner ⁺	Cyrus H. Adams ^F	Kaye B. Aurigemma ^{F+}
Mr. and Mrs. John W. Prange, PhD ⁺	Annette M. Schmit ^{V+}	Susan Spaulding	Sandy E. Van Tilburg ^C	Rebecca M. Adams ⁺	Claire Babineaux-Fontenot
Mr. and Mrs. Michael Prapuolenis	Mr. and Mrs. Arthur Schneider	Margaret Spears and Ronald Spears	Shawn K. VanDerziel and Jay Clarke ⁺	Mr. and Mrs. David L. Ader ^F	Dan and Elissa Baker
Dr. and Mrs. Richard A. Prinz, MD ^F	Terri and Paul Schroeder ^F	Laura Speck and Kimberley Speck	Anna Varsam	Mr. and Mrs. William T. Adkerson ⁺	Mr. and Mrs. John T. Baldwin ^{F+}
Dr. H.J. Przybylo ^F	Alin ^T and Luke Schubert ⁺	Susan and Ross Sprovieri	Martin Vega and Carmen Cruz ^{C+}	Colleen Rogers Aivazian and Erik Aivazian	Stephen Baren ^C
Elaine Purnell	Dr. and Mrs. Peter F. Schultz ^F	Sarah D. Sprowl ^{F+}		Jorge Alarcon	Leslie and William Barker ^F
		Devin Stalker ⁺			
		Emily and Stephen Stanley ^C			

Eleanor M. Barnes and Allison M. Barnes	Vonora and Michael Bishop	Louise Nora	Lisette Chapa and Adam Castaneda	Esther Collins ^C	Marin Darsie
Bernadette Barrett	Nancy Doris and John Blackburn ⁺	Ryan and Elizabeth Brown	Suzanne Chapa	Joan M. Colmar	Rebecca Dauparas
Frances Barrett	Holly Blastic	Michelle L. Brownlee ^E	Tammy and Brian Chapas	Reverend Thomas P. Conde	Anthony and Ina Davis
Susan Barrett and Jonathan Sweeney	Shelley Bloch	Linda Brummer-Welsh	Kathleen Chapas	Kevin Conlon and Diane Jackson	Dr. and Mrs. Robert L. Davis
Susan and Robert Barsy ^F	Mr. and Mrs. Irwin A. Blumensaadt, Jr. ^F	Amelia Brummund and Walter Brummund	Glenna and Danny Chapman	Gladys E. Connolly ^F	Mr. and Mrs. Dennis De Bruler ^{F+}
Chris Basoukeas and Paige Greve	Eric Boffeli	Mr. and Mrs. Frank Bruno	Sarah Chapman and John Henke	Ann Cooper	Carol and Pierre De Smul ^F
Douglas D. Baum and Lynne M. Wait ^F	Mr. and Mrs. Erwin F. Bogs	Georgia Bryan ⁺	Harry Chavez	Charles and Lashana Cooper	Mr. and Mrs. Mark D. Deaton ^F
Maria Bautista and James Robinson	Ava and Thomas Boltik ^F	Mr. and Mrs. Archibald T. Bryant ^F	Natali Chavez	Caryn Corriere	Carol DeBiak ^{V+}
Mr. and Mrs. Kenneth J. Bazarnik ^F	Paul D. Bond	Nicole Bryant and Melody Robinson	David Chen and Sharon Chen	Mathew A. Cotton	Dr. David A. DeBoer
John M. Beal ^F	Nora and Tony Bondi	Mr. and Mrs. Joshua T. Buchman ^F	Jack Chen and Margaret Bonfardin	Cynthia D. Cox and Robert Cox	Linnea and Menahem Deitcher
James Bebley and Tracey Ladner	Marcello L. Bondurant	Daniel B. Budaj and Caroline M. Neilan	Vincent Chen and Jennifer Kwok	Mr. and Mrs. Stephen E. Cox ^F	Robin A. Delapena ^E and Dani Nichols ⁺
Mr. and Mrs. Robert D. Becker	Norma and Don Bonet ⁺	Carrie Burbank	Joan S. Cherry and John R. Cara ^F	Mr. and Mrs. Thomas W. Coyle ^F	Judith A. DeLeon ^C
Reverend and Mrs. William C. Beckmann ^F	Mr. and Mrs. Russell A. Bonham ^F	Brian Burgess	Lisa and Edward Cherullo	Michael Cozza ⁺	Mr. and Mrs. Charles Dennehy, Jr. ^F
Mr. and Mrs. William Bedford	Clarisa Bonilla ⁺	John F. Burke, Jr. ^{F+}	Dr. Suyin Chi	Sue and Kyle Cragg	Irene Dettmers ⁺
Elizabeth Begolli	Mena and David Boulanger ^F	Julia L. and Walter E. Busse	Joe Chiczewski and Mike Chiczewski	Mr. and Mrs. Donald N. Crampton	Daniel DeWitt ⁺
Shadi Beidas	Rachel H.E. Bowen and Kat Connor ⁺	Kate Butler ^C	Betty Chinn and Johnny Chinn	Ellen and Henry Criz	Amanda Dewyer-Schenk and Danny Schenk
Frances Beltran	Jessica Boyer	Eileen M. Cahill and Family	Mr. and Mrs. James N. Chodora	Jim W. Croft and Marilyn Martinson Croft ^F	Mr. and Mrs. Perry D. Di Girolamo
Cheryl Bennett	Mr. and Mrs. Dennis E. Bozych ^{F+C}	Frances Cahill and Cynthia Cahill	Marion and Roger Christoph ⁺	Dolores E. Cross, PhD	Renee Dickerson
Jaanine and Jack Bentley ⁺	BP	Kristy and Robert Calland	Mr. and Mrs. Michael Chu	Christopher Crovo	Mr. and Mrs. Blair C. Dickinson
Dr. and Mrs. Michael Bercek ^F	Mr. and Mrs. Stefan Brabeck	Roxanne Capron	Virginia and Charles Clam	Susan M. Crowell and Kathleen Cooke	Lisa Diehlmann and William Deakin
Jacqueline A. Bergen	Paula Braga	Michelle and John Carr	Louise and Steven Clark	Marie Cuevas and Rachel Mayer ⁺	John Dieter
Julie Beringer and Bob Jermon	Ramona Branchaw ⁺	Wayne and Sheila Carr ⁺	Wendy Clark	Emily Culberston	Patricia Ann Dihel and Glen Wilson ^F
Marjorie and Miles Betley ⁺	Clare Brandfonbrener	Guadalupe Carranza and Fernando Guterrez	Andrew Clarke and LaDoris Duncan ^F	Cathleen A. Cunningham and Robert J. Barnes	Marilyn Diller
Dr. Sarita Bhakuni and Dr. Scott Chalmers	Julie and Tim ^E Bratley	Mr. and Mrs. Joseph M. Carroll	Mr. and Mrs. Albert C. Claus ^F	Christine Curley and Michael Rugotska	Dr. and Mrs. ^E Daniel Dilling ⁺
Tuhina Bhatt ⁺	William C. Brauneis ^F	Annalisa and Andrew Carter	Krista and William Clayton	Dr. and Mrs. Arthur W. Curtis, MD ^F	Kathryn M. Dillon
Roger J. Bialcik ^F	Marie E. Brelin ^F	Virginia H. Carter	CNA Insurance	Elizabeth A. Curylo ^F	William D. Dini ^{F+C}
Dr. and Mrs. Henry S. Bienen	Lori F. Breslauer ^{F+}	Emilio Castaneda	David Coffield	John E. Cwenkala and Lorraine Brochu	Carol and Paul Dittmann ^F
Nancy and Christian Bigelow	Steven U. Brint	Cristina Cavallo ^V	Geoffrey Cohen	Deep Dalal	Chaunyce Dixon
Paola Bigham	Charles Thomas Brockmann	Amy Cavazos and Kazuki Guzman	Mr. and Mrs. Stanley Cohn	Ellen L. Dalton ^C	Mr. and Mrs. John M. Dixon ⁺
Bradley D. Bishop and Katherine Signorella	Natalie Broler	Gregory Cavitt	Ivy and Mark Coleman ⁺	Anne Daly and Malachy Daly	Joshua Dlouhy
	Leslie and Daniel Brosk	Mr. and Mrs. Jogesh Chandran ⁺			Mr. and Mrs. Robert S. Dobis
	Mr. and Mrs. Daniel J. Brown ^F				Mr. and Mrs. Kevin M. Doherty
	Marshall Brown and				

Dr. Tara Dolan	Velda Dykehouse and Patrick Carleski	Bradley Ewert and Rachel Ralph	Mr. and Mrs. Conrad T. Fialkowski ^F	Mina Foroohar	Dru Gartside and Fred Gartside
Juliette Dols	Eleanore C. Dykes [*]	Mr. and Mrs. Thomas E. Fahrenbach	Becky Fideler	Marcy and Lance Fortnow	Willetta M. Gary
Brian K. Dominick and Kristin Lenda	Nichole and Greg Dziadosz	Harry R. Fair III and Carolyn E. Jordan	Heather Fields and Ashok Bhatia	Laura S. Fosler [*]	Katie and David Gelbmann
Mr. and Mrs. Joseph E. Doninger [*]	Andrew and Kathleen Ebbott	Ann and Richard Falkner ^{C+}	Mary Ellen and Robert Fieseler ^{F+}	Dawn and Mark Foushi	Melissa Genova Hill and Joel Hill ⁺
S. Downey Fund	Louise Ebel ⁺	James R. Fancher ⁺	Fitch Ratings	Val Fox	Julie L. Gentes ^{F+}
Lindsay Drabek and Alexis Sermier	Laurie Eberhardt and Peter Martin ⁺	Elizabeth Fanuzzi	Mr. and Mrs. James G. Fitzgerald ^F	Bettina and George Francis ^{F+}	Mr. and Mrs. William Georgis
Beth and Harry Drucker	Anne E. Egger ⁺	Mr. and Mrs. William F. Farley ^F	Jennifer Fitzgerald and Amy Fitzgerald ⁺	Gerald Freedman and Elizabeth Sacks ^{FC}	Mr. and Mrs. John Geweke
Mr. and Mrs. Joseph H. Drummond ^F	Marsha Elrod	Stephanie and David Farnia ^{C+}	Shannon and Kevin Fleming	Mr. and Mrs. Jason Freedman	TiRon Gibbs and Tishonda Washington-Gibbs
Dr. and Mrs. Anthony B. D'Souza ⁺	Michelle and Carl England ⁺	Jordan and Nathan Farquer	Mr. and Mrs. Peter L. Flemister ^F	Barrett Fromme and Chad Duffy ⁺	Dr. McGuire Gibson ^F
Kathy Dull and Mark Templeton	Yoga by Allison	Tiffany Farriss and George DeMet	Delia Flores ^F	Jamie and David Fryrear	Sallie and George Gill
Brenden Dunleavy	Douglas Ennis and Sandra Ringelstetter-Ennis	Julie A. Federico and Alton Jay Mitchell	Idalis Flores and Andrew Pelayo	Colin Funk	Michele Gillett and Simonie Woerfel
Julia Dunn	Timothy Erlandson	Andrew Fedorowski ⁺	Tiffany and Jeffrey Floresca	Anthony Furnas and John Tibble	Christopher Giorno
Kathleen and Darcey Dunn	Karen and Charles Ernst ^{C+}	Signe and Donald Ferguson ⁺	David C. Follmer and Anita M. Samen ^{C+}	Brett Furuness and Emily Sekerak	Deborah Gladstone and James Stedt
Mathew Durley and Liveida Monsalve ⁺	Mr. and Mrs. Ronald L. Eshleman ^F	Dr. and Mrs. Balbino B. Fernandez ^F	Liam T.A. Ford and Ann R. Weiler	Mr. and Mrs. Chris Gallmeyer	Glanbia Business Services
Donald J. Duszynski ⁺	Ruben Esparza	Laura Ferrell and Grant Riedesel		Patti Eylar and Charles Gardner	Paula Glitman ^V and Doug Stone ^F
Judith M. Dye	Mr. and Mrs. John B. Evans			Neha and Vikas Garg	Jan and David Gochenaur



Grandson of the Field's first paleontologist reconnects with the Field Museum

On Saturday, July 24, Bill Simpson, McCarter Collections Manager, hosted Ralph Elmer Riggs, grandson of Elmer Samuel Riggs, the Field's first paleontologist and founder of our vertebrate paleontology collections.

Elmer Riggs was hired in 1898 and retired in 1942. His early dinosaur work included excavating the new world's largest dinosaur in 1900, which he named *Brachiosaurus altithorax*, and a mountable *Apatosaurus* in 1901, both of which came from western Colorado and are on display today at the Field.

Ralph Riggs visited with his wife, Dana Temple, and friends. Simpson took them through Vertebrate Paleontology Oversize in the Collections Resource Center, where they saw the holotype of *Brachiosaurus*, and other large sauropods, including the giant femur from the Riggs *Apatosaurus*. Ralph and party were amazed at the variety of fossils his grandfather collected for our Museum.

(Left) Ralph Elmer Riggs holds a photo of his grandfather on expedition.

Ethel and Bill Gofen^{FC}
 Geoff Goldberg and Lynne Remington^{F+}
 Mr. and Mrs. Perry Goldberg
 Lisa and Daniel Golden
 Joan Goldstein^{FC}
 Claudio Gonzalez and Maria Gonzalez
 Jessica L. Gonzalez
 Mr. and Mrs. David E. Good^F
 Richard Gordon and Alexa Edick
 Dr. and Mrs. Numa R. Gottardi-Littell
 William Goudie and Mark Goudie⁺
 Robert F. Gourley
 Mr. and Mrs. Craig R. Graff
 Karen L. Granda and John S. Mrowiec^F

R. Lance Grande, PhD^E
David B. Grant
Mr. and Mrs. Richard Gray
Kristoffer Gredsted and
Monica Norzagaray
Pedraza^{*}
Kathryn Green
Alexander Greenberg and
Elizabeth Gordon⁺

Ann^V and Alan Grelyak
Maryann Groner⁺
Ed Gross and Alma
Blazquez⁺
Ryan and Laura Gross
Mr. and Mrs. David L.
Grumman^{F+}
Kimberlee S. Guenther^F

JoAnna Milam-Guerrero and
Victor Guerrero
Ada Mary Gugenheim and
Jon N. Will^{F+}
Nancy and John Gustaitis, Jr.^F
Mr.^V and Mrs.^V Richard E.
Guzik^{*}
Amy^V and Gilbert Gwilliam⁺
Kathleen and Dean Haas^{F+}

Robert A. Habermann^F
Mr. and Mrs. Mervin D.
Hagen
Ryne Haley
Holley Hall^{FC}
Barbara Hamachek
Danielle and Robert Hamada
Mr. and Mrs. Garret Hamby
Mr. and Mrs. Michael S.
Hammond
Catherine and Harold
Handelsman
Larry L. Hanes^F
Joseph R. Hanley and
Kristy L. Mardis^{C+}
Robert Hanlon and
Barbara MacDowall⁺
Arthur R. Hansen, Jr.^{FC+}
Taylor L. Haran
Johanna and Don Harden^C
Trish and Harp Harper^C
Stephanie Jacob and
John Harrigan
Graeme Hart and J'Tia Hart
Victoria Hartman and
August Compton
Emily and Carlton Hathcoat
Martin F. Hauselman^F
Mr. and Mrs. Allan Hausfeld^{F+}
Mr. and Mrs. William D.
Hawes
Mr. and Mrs. Max Hawkins⁺
Amy and Eric Hawkinson
Nicole and Andrew Hayek
Andrew Hazard and Anne
Heathcock
Lawrence R. Heaney, PhD^{FE}
Joyce E. Hecht^{CV+}
Peter Hegel⁺
Stacy and Trevor Hegranes⁺
James S. Heim

Mr. and Mrs. John
Henderson⁺
Ryan R. Henke
Anna Henkin
Susanne Henning and
Robert Henning⁺
Diego Hernandez
Michael Hervitz and
Leeatt Rothschild
Mr. and Mrs. John W.
Higgins^F
Mr. and Mrs. Harlow N.
Higinbotham⁺
Dan Hodges
Mr. and Mrs. Geoff
Hoffmann
Mr. and Mrs. John Hohmeier
Ariane Holtschlag and
Matthew Highland⁺
Laura and Dean Honda^F
Honeywell International⁺
Casey Hoogstraten
Elizabeth A. Hopp-Peters
and Kurt T. Peters^F
Grace Hou⁺
Andre Howard
Elizabeth Howard and
Justyn Howard
Christine Hsieh and Sudhir
Penugonda
Dr. and Mrs. Jeffrey L. Hunt^F
N. J. Hunt and
Barbara E. Miller
Dr. and Mrs. James D. Hurst^F
Pamela Hutul Ross
Anna Ignatowicz and
Pawel Ignatowicz
Beth Ingram
Mary Lassila and Brian Israel
Cheryl Istvan and Keith
Daubenspeck^F
Rohit Jacob and
Rebecca Joseph⁺

Bert Jacobson and
Diane Siaroff
Dr. William M. Jagiello^F
Mr. and Mrs. Michael Jakola
Andrew James and
Rakkana Craig
Mr. and Mrs. Paul A. James
Rosalie and Andrew Jansen
Donald Janus⁺
Janice A. Jarnholm^F
Catherine A. Jaselskis and
Gary G. Alberts
Mr. and Mrs. Donald E.
Jeffers^C
E. Martin Jehn
Angel and James Jepsen
Olivia Z. Jiang⁺
Magno Joepsh
Ju Joh
Randee and Vance Johnson
William L. Johnson
Dawn Jones
Peggy and PhilLip Jones
Cathy and Eric Jorgensen^F
Mr. and Mrs. Paul R. Judy
Philip Juras and
Beth Gavrilles
Kevin Kahover⁺
Jill M. Kainu and
Michael LaBuda
Kelley and Matt Kaleta
Ashley and Phillip Kallas
Elyse Kallen
Mr. and Mrs. Kenneth Kamba
Andy and Kaitlin Kamphuis⁺
Vit Kantor
Jared Kaplan and Maridee
Quanbeck
Mary Kay Karzas and
Warren K. Reiss^F
Ian Kash



New beetles donation

On April 20th, the Field Museum received a gift of 1,200 Staphylinid beetles from long time collaborator Mark Evans. The specimens were mostly collected in Langlade Co, WI, and Madison Co., NY, and curators emeriti Al Newton and Margaret Thayer are contributing to having them identified to species. On June 18th, while participating on the Milwaukee Public Museum's BioBlitz at the Wehr Nature Center along with Collections Manager Maureen Turcatel and Collections Assistant Jim Louderman, Mr Evans made a second gift of 265 pinned specimens of horse flies and deer flies. His collecting efforts in Wisconsin continued throughout the Summer, and he plans to add more specimens to the Field's collections.

(Above) Mark Evans and Collections Manager Maureen Turcatel unloading Evans' beetle collections donation.

Loraine Kaufman Foundation	Timothy ^V B. Knuth and Elizabeth Tate ^F	Christine J. Laperuto and William J. Roznowski ^F	Hillary L Logan and James Siegele	Malinda Marchluk	Britton McKay and Benjamin McKay
Mr. and Mrs. Steve Kaufman	Cheryl B. Kobetsky	Kaitlin and Marcos Lara ⁺	Joyce Orellana and Gilberto Lopez	Jaime Marcial	William McMurry
Sherri and Reis Kayser	Richard and Laurie Kobor	Ignacio Larrinua	James Louderman ^{E+}	Karen and Ira Marcus ^{FC}	Mary McNaughton and Robert E. Nerius
Laura and Don Keefer ⁺	Sibyl Kobza ⁺	Norma and David Lauder	Dr. and Mrs. Steven S. Louis	Helen Mark ⁺	Terry J. Medhurst ^{FC}
Denise A. Kelley ^F	Ray H. Kocher ^{FC}	Chelsea Lauing and Ben Cox	Barbara Mankus Louthan ^C	Mr. and Mrs. John B. Markovic	Tamiye Meehan
Gaye Lovett Kelsey	Mr. and Mrs. Shohei Koide	Tera and Robert Lavick ⁺	Holly and Ralph Love ^{FC}	Kim Marsh	John M. Meeks ^{F+}
Laura Kempke	Christine and Henry Kokrda ^F	Aaron Lebovitz and Donna Myers	Julia Lucaci and Cosmin Lucaci	Ann Martin ⁺	Joaquin E. Mendoza
Lee Kendall and Gregory Horvath	Mr. ^V and Mrs. Ernest J. Konker	Jessica Lee and James J. Nichols	Judith Ludlow	Todd and Erika Martin	Joan and Jeff Mercuri ⁺
Mr. and Mrs. Terrence Kennedy ^F	Mea Konopasek and Hoyt Long	William M. Lee, Jr. ^C	Dr. Spomenka M. Luedi and Mr. Hans Luedi ^C	Mr. and Mrs. Felipe Martinez	Dr. and Mrs. Ernest E. Mhoon, Jr. ^{FC}
Mr. and Mrs. Thomas J. Kenney	Emily and John Kos	The Honorable Joan H. Lefkow	Thorsten H. Lumbsch, Ph.D. ^E and Phillip Ramon	Patricia and Philip Marusarz	Robert C. Michaelson ^C
Mr. and Mrs. Harrison Kennicott	Mr. and Mrs. Joseph A. Kosinski	Sarah Legault	Jane and Steve Lupton ⁺	Heather and Ben Mascarello	Kelly and James Michel
Mr. and Mrs. Paul Kenny	Risha Kotecha ⁺	Paul A. Lehman and Ronna S. Stamm ^F	John R. Lurain ^{FC}	Mr. and Mrs. John V. Massey ^F	Kathleen Miles
Anne M. Keough	Nilesh Kothari	Sandy and David Lentz ^{FC}	Alyssa and Yaniv Lusky	Odis Massey and Amanda Lenton	Elizabeth Miller
The Honorable and Mrs. Robert J. Kepka ⁺	Kristine Kovari	Glenn Leonard and Mary Anne Daher Leonard	Joan and Ronnie Luyun	Dr. and Mrs. James Mathews	Emily Marie Miller
Susan B. Kern and Alex Yamron ⁺	Dr. and Mrs. Mark F. Kozloff	Travis Leonard	Mr. and Mrs. Gregory Lynch	Mr. and Mrs. Wesley D. Matthews	Jaclyn C. Miller ⁺
Debra Kerr and Steven Thompson ^{F+}	Mary and Jesse Kramer	Mr. and Mrs. Vincenzo O. Leone ^F	Dr. Kevin M. Lynch and Ms. Yuko Lynch ^{C+}	Mr. and Mrs. George A. Matwyshyn ^F	Philip Miller
Omar S. Khalil ⁺	Katherine Krickbaum	Mr. and Mrs. Alan E. Lerner ^C	James D. Lyons	Reverend Charles F. Matz ^C	Thomas Miller ^{V+}
Kimberly and Willis V. Kidd	Dr. Judith Krieg and Mr. Richard Krieg	Joanne and Craig Leslie ⁺	Kevin Maas and Mara Maas	Mary and Peter Mavrogenes	Lauren and Michael Bockmier ⁺
Mr. and Mrs. Sunil Kim	Dona Krug	MSgt. and Mrs. Gary L. Lessenberry ^F	Lisa and Alexander MacDougall	Mr. and Mrs. Henry H. Maze ^F	Amanda Minks
Betty and James Kirk ^{FC}	Juliann Krupa ^{C+}	Sarah Levesque ^{V+}	Mr. and Mrs. Jim MacGinnitie	Megan and John McCartan	Meaghan Misiasz
Mary Kitchell	Elizabeth and Gregory Kuhn	Mark Levin	Brenda and John Macke	Mr. and Mrs. Patrick McCarthy ^{C+}	Susan W. Mittman ⁺
Ashley Kittrell	Gaurav Kumar and Sneha Thakur	Charity Lewis	Mr. and Mrs. Craig A. Mackrides	Kathryn McConnell	Miriam A. Mobley Smith ^F
Mr. and Mrs. Frank L. Klapperich, Jr. ^{FC}	William Kunkle ⁺	Pravin Lewis	Karen and John Maddalozzo ^F	Stuart A. McCrary and Nancy L. Davis	Raymundo Molina
Cheryl Sweeney and Keith Kleehammer ^F	Nicole Kwiatek and Charles Tejcek ⁺	Mr. and Mrs. Robert Lewis ^C	Tracy Madison	Robert B. McDermott and Sarah P. Jaicks	The Monday Docents
Eileen and Robert Kleps ⁺	Harold T. Kyvig ⁺	Christopher Liang	Eric Magnuson	Michael McElroy and Sarah Rippey	Raesue Kao and Juan-Antonio Montesinos
Dr. and Mrs. Thornton C. Kline, Jr. ^{FC}	Lynne La Jone and Chris Mollet ^C	Aaron Lichamer and Melissa Hunter	Dr. and Mrs. Giancarlo A. Maldonado	Sherry L. McFall and Kenneth J. Porrello ^F	Dr. Cris Montoya ⁺
Mr. and Mrs. Kenneth A. Klinger ^F	Dr. and Mrs. Richard J. Labotka ^{FC}	Gilbert Lichstein and Ruth Czarnecki-Lichstein	Peggy Malecki	Christina McGown	Mr. and Mrs. Eugene F. Moore ^C
Carissa Kloncz and Alec Bunnell	Linda and Robert LaMontagne	Sean Lino and Boris Lino	Richard D. Malone	Marc C. McGuire	David C. Moore and Marilyn S. Moore
Audrey L. Klopp and Keith I. Klopp ⁺	Michael Landau ⁺	Kevin J. Little and Erin Loxley	Alexandra Margo Malos ⁺	Elizabeth and Matthew McHale	Mr. and Mrs. Leon W. Moore ^F
Shannon and John Knight ⁺	Bernadette Foley and Richard Landgraff ^{F+}	Joshua Livingstone	David Manion and Mindy Kairey	Mr. and Mrs. Gregory L. McHenry, Esq.	Claudia Morariu
	Laura M. Lanford	Mr. and Mrs. William F. Lloyd ^F	Spiros Mantzoros	Mr. and Mrs. G. Thomas McKane ^C	Bianca Lozano and Jonathan Moreira
					William A. Morgan and Gwen Herrin

Sarah and Justin Morgenthaler	Neha Nigam	David Painter and Jean A. Carroll	Elisandra Perez	Dr. Lynn Pries and Ms. Rebecca Pries ⁺	Abbey Rintels and Asenet Torres ⁺
Mr. and Mrs. David D. Morimoto ^F	Jill Niland	Andrew V. Palmer and Marisa Guggenheim	Lynn M. Perry and Brad Perry	William L. Pry	Donna D. Ritson ^F
Harold M. and Adeline S. Morrison Family Foundation	Laura Nitowski and Berkeley Dietvorst	Marsha and Steve Panfil	Mr. and Mrs. Boris Pervan	Colette Pulfer	Myriah Brown and Arnaldo Rivera
Susan M. Morrison ⁺	Robert Nottoli	Linda and Christopher Paris ⁺	Mr. and Mrs. Nathan Peters ⁺	Lucas Quinlan	Celeste Robbins
Sabrina R. Morton ^F	Nichole and Scott Novak	Richard Park	Donna and Scott Petersen ^{FC+}	Adriana and Adrian Quinones	Debra ^V and Andrew Roberts ⁺
Margaret Mottier ^F	June Novalich	Yeonmi Park and Martina Rossyd	Brett Peterson ^{F+}	Kendra and Michael Rackauskas	Patrice D. Robinson and Charlie F. Robinson ⁺
Emmett Mottl	Victoria Novotny	Julia Parker	David C. Peterson	Camellia and John Radzinski	Mr. and Mrs. Timothy M. Rockhill ⁺
Tony Moy	Marilyn and Bryan ^V Nugent	Ruth Rankin and Steven Parker ^F	Jackie Peterson and Kathleen Hamilton	Dorothy Victoria Ramm ^F	Paul Roesler
Carolyn Mulroney	Michael O'Connor	Tim Parker	Mr. and Mrs. R. Douglas Petrie	Dr. Rama Ranganathan and Ms. Dipiti Ranganathan	Lisa Roetzer
Christine Mulshine	Dr. and Mrs. Patrick O'Connor ⁺	Jacqueline A. Parks	Lorna and Ellard Pfaelzer	Rebecca Rasmussen and David Greenwald ⁺	Erik Roffelsen and Nelleke Roffelsen-Peters
Zina and Hector Munoz ^F	Phillip Oegema	Mary Jo Parks	Li-Ho Pi and Nancy Ying	Elizabeth Rathje and Robert Taylor	Linda R. Rogers ⁺
Dr. Linda Munson and Ms. M. Cavana	EllenE and Michael O'Hanlon ⁺	Catherine and Robert Parks ⁺	Mr. and Mrs. James E. Piechowski ^F	Maria Rosa and S. Louis Rathje ^C	Ron G. Rohde ^{FC}
Mr. and Mrs. Edward C. Murawski	Melissa and Jon Oka	Stanley J. Parzen ^F	Mr. and Mrs. Edmund Piehler	Dr. Nighet Razvi and Dr. Joseph Sachleben	Sebastian Rojas Landivar
Mr. and Mrs. J. B. Murphy ^F	Jane Ann Olmsted	Diane D. Pascal ⁺	Mindy and Rob Pierce	Richard H. Ree, PhD ^E	Jan Romenesko
Mary Murphy and Stephanie Stanley	Heather and Riley Oncken	Antonio Pascual and Kimberli Breen	Spencer Pilot and Curtis Hunter Pilot	Mary L. Reed ^D	Mr. and Mrs. Benjamin Rooks ^C
Elizabeth Davis and Stephen Murphy	Mary Summerfield and Michael O'Neal	Mary Ellen Pascucci and John Morrison ⁺	Mr. and Mrs. William Pilot	Raquel Reichert	Mr. and Mrs. Phillip B. Rooney ^F
Marie and Jim Muse ⁺	Katie and Andrew Opdyke	Bethany Winkleman and Richard Pasiewicz	Mr. and Mrs. Jerome W. Pinderski, Jr.	Jane and Jay Reidy	Mr. and Mrs. Theodore Rosean
Kenneth Nassau	Dr. Mike Oren and Ngoc Nguyen	Mr. and Mrs. Anthony C. Passanante	Pinnacle Hospital ⁺	Adam Reimer	April Rosenbaum and Roxanna Rosenbaum
Mr. and Mrs. Juan C. Navarro	Fred ^V and Marie ^V Orendach	Shivani Patel	Nancy and Michael Pins	Jeremy Renteria	Mr. and Mrs. Harry B. Rosenberg ^F
Marquee and Jay Neander	Amy L. O'Rorke and Kris O'Rorke	Laura Patricio Patricio-Bellizzi and Timothy Patricio	Mr. and Mrs. Charles J. Plasil	Anne Rogers and John Reppy	Dr. and Mrs. Neil Rosenberg ^F
Deborah and Tony Nelson	Shannon O'Rourke and Tim O'Rourke	Bruce D. Patterson, PhD ^{E+}	Mary and Joseph Plauche ^{F+}	Anne Reser and Michael D. Hill	Jack Rosenfeld ^C
Lisa Nemeroff ^F	Mr. and Mrs. Robert W. Orr	Donna and John Patterson ^{F+}	Gregory A. Podczaski	Raiselle C. Resnick and Kenneth I. Resnick ^F	Mr. and Mrs. Bernhard Rosenstein ^F
Suzanne Ness and Robert Troub	Mr. and Mrs. Baltimore F. Ortega ^F	Chris and Jim Patterson ^{FC}	Walter and Janice Podolski ^F	Delon Reyhart	Marsha and Robert Rosner ^F
Ryan Nester and Alesha Riegler	Mr. and Mrs. James J. O'Sullivan, Jr. ^F	Mr. and Mrs. Thomas G. Patterson	Laurie and John Poelking ^{F+}	Ahsun Riaz	Peter Rossmann and Sarah C. Rossmann
Karen Newlin and Christopher Newlin	Barbara E. Otte and Bruce C. Shelley ^C	Lois M. Pausch	Jennifer and Joshua Poje ⁺	Kevin Rice	Michael C. Rothman and Bonnie Fry Rothman
Mr. and Mrs. Aaron Newton	David Otto and Marianne Wojak ^F	Monica Pawelec and Eva O'Brien	Nicolette Polite	Kristina Rice and Jacob Lesgold	Glenda and Phillip Rowe
Caitlin Nguyen	John E. Owens ^F	David J. Peace and Karen T. Ferrer ^{F+}	Mr. and Mrs. Jay D. Pollitt ^F	Linda Richardson ⁺	Connor Rubin
Gina M. Nicholas ^F	Matthew J. Owens	Mr. and Mrs. Jerry K. Pearlman ^F	Cheryl and Nicholas Ponce ⁺	Mr. and Mrs. Jerald F. Richman ^F	Bobbie F. Rudnick
Victoria and Lawrence Nichols	Mr. and Mrs. Charles W. Paape ⁺	Clark Pellett and Robert Kohl	Betsy and Tom Pondelik	Mr. and Mrs. Stephen L. Richmond ⁺	Mr. and Mrs. John Rudnick
Karen Nickelson ^F	Lorraine and Johanne Pachankis		Andrew J. Porte		Jonathan Rumsfeld
			Rebecca and Alan Porterfield		
			Sarah Pratt and Jonathan Pratt		
			Mary and Todd Preissig		

Patricia and Paul Russell*	Mr. and Mrs. Michael Seeler	Mary and James Smith	Melissa and Mark Swedlow	Valerie Tynkov	James and Deborah Wagner
Dominic Russo and Jessecia Kendall	Roberto Segura and Kati Segura	Michelle Murphy and Matt Smith	Bob B. Swieczkowski	Tyson Foods	Laura Wagner and Matt Loewen
Marisa Ryan	Alexander Seile	Maxine and Larry Snider	Dr. and Mrs. Jan P. Szidon ^F	Norma and J.J. Uhran	Mr. and Mrs. Herschel D. Wallace III ^C
Patricia Saffold	Mr. and Mrs. T. Dwaine Self ^F	Cynthia Y. Soltes ^{F+}	Debra and David Takehara	Kathleen and Thomas Ullo	Don Waller and Caitlyn Allen ⁺
Clare M. Salamon ^{F+}	Dr. Michele Semin	Thomas Sonnleitner and Supriya Mehta	Raymond Tarin	Mr. and Mrs. Enrique J. Unanue	Noelle Wallin
Mrs. Donald W. Sampson	Mr. and Mrs. James Semrad ^C	Robyn Sotak ^{V+}	Gayle Taylor ⁺	Caitlin Corbett and Sean Underwood ⁺	Ronald J. Wallin and Whitney A. Parker ^F
Mr. and Mrs. Emil Sanchez	Natalie Senecal and Peter Kelly Senecal	Maria Soto	Kimberly K. Taylor and Zachary Larson	Jill and David Uswajesdakul	Olga and Darin Walsh
Jane Marie Sanchez	Ricardo J. Sequeira ⁺	Virginia P. Souza	TE Connectivity	Mr. and Mrs. James F. Valley ^{F+}	Dr. and Mrs. Leo Wang
Carrie Sapp	Benita C. Serio ^F	Anita and Paul Sowadski	Eleanor Teel	Mr. and Mrs. Robert C. Vallone ^F	Ralph L. Wanger, Jr. and Monique Clarine
Mr. and Mrs. Jerome A. Sara ⁺	Bill Shaeffer and Anne Palermo	James Spencer	Victoria Tejeda-Gervais	Mr. and Mrs. Gerald A. Van Kollenburg ^F	Alie Ward
Dr. and Mrs. Peter J. Sargon	Danya and Aftab Shaikh	Norman F. Spielman ^{F+}	Connie Luecke and Kevin Telford ⁺	Mr. and Mrs. Jack Van Orden	Sally F. Ward
Mr. and Mrs. Milan Saric ^{FC}	Dr. Mary Ann Fischer and Mr. Robert Sharp ⁺	Susan Spielmann-Beckner ⁺	Linda and Ernest Tellez	Melody A. Van Wermeskerken ^{F+}	William V. Ward and Anne Cygan
Elena Satraitis ⁺	Araceli and Nathan Sharper	Mr. ^D and Mrs. Donald E. Sporleder	Leslie and Brigham Temple	John M. VanderLinden and John Wm. Butler, Jr. ^{FC+}	David A. Wargowski and Pamela McMullin ⁺
Mr. and Mrs. Peter Sauerbrei	Mr. and Mrs. Charles Shenk ^F	Mr. and Mrs. Eric Spratford	Nicholas K. Terrell	Scott VanVleet	Julie Weatherbee and Robert Droppleman ^C
Adrienne Saur and Drew Saur	Sandi and Michael Sheppard	Carolyn and William Springer	Monique Terry	Christine E. Varela and Angela Varela	Julia C. Webb
Alice and Peter Schaff ^{C+}	Judith ^V and William ^V Sherry	Emily Stace and Drew Davis ^C	Tara Testolin ^C	Fernando Velazquez	Liz Webler
Bernadette Scheib and Randal Scheib	Sun Shim	Gloria Stachnik ⁺	Donna and Kevin Tews ^{C+}	Yvonne Venable	Marilyn and Frederick Webster, Jr. ⁺
Judith and David Schiffman ^{FC}	Michelle Shlimon and James Colquhoun	Ingrid and David Stalle	Texas Instruments Foundation	Daniel P. Venske	Kathryn P. Weibel and Steve Freeman ^{F+}
Beth and Marc Schmidt	Akanksha and Amit Shukla ⁺	State Street Corporation	Kimberly Thayer	Mr. and Mrs. Leonard M. VerVers	Erin and Sandy Weinstein
Martin Schmidt	Margaret and Alan Silberman ^{F+}	Annette and Richard Steinke ^C	Kanjana Thepboriruk ⁺	Marie Vesely and Patrick Hoover ⁺	Dr. Clara Orban and Dr. Elliot Weisenberg
Rebecca and Carl Schmiegelt	Deborah Cohen and Tom Silfen	Mr. and Mrs. Phillip L. Stern ^F	Mr. and Mrs. Nick Thomas ^{F+}	Catalina J. Vielma ⁺	Mary C. and James Weisman
Mr. and Mrs. Eric R. Schnadig	Cathryn Simkins ⁺	Mr. and Mrs. Howard L. Stocker ^F	Aurea and Richard Thomas	Hector Vielma and Guacolda Reyes	Sherrie and Albert Weiss
Michael J. Schneider ⁺	Cecelia Simmons and Leontine Clark	Pamela and James ^V Stola ^F	Gosha and John Thornton	Lauren and Pete Vitale	Gene J. Weiss, MD
Mr. and Mrs. Michael L. Schnell ⁺	Patricia and Ronald Sindelar	Dr. and Mrs. Douglas W. Storm ⁺	Gretchen and Gregory Tieder	Rebecca Vlasic and Frank Carter	Katie Weitz and Amelia Miller
Richard Schreiner ⁺	Kevin Sisson	Brianne and Frank Straka	Dylan Tilbury	Eilene Von Borstel and Robert Von Borstel ⁺	Theresa and Mark Welegala
David Schuster ⁺	Katarzyna Skinderowicz and Zbigniew Lebida	Patricia A. Stratton	James Tomaszewski	Susan Vondrak	Dr. Ja-Quel April West ^C
Mr. and Mrs. John A. Schweig ⁺	Marcia E. Skwarek ^{CV+}	James R. Streicker and Mary W. Stowell ^F	Mr. and Mrs. Ben Tombaugh	Kellen Voss and Jessica Voss	Sheila and Brian Whalen ^{F+}
Mr. and Mrs. Charles S. Schweizer	Adam Smith ⁺	Mr. and Mrs. John J. Streit ^F	Dana Shepard Treister and Dr. Michael Roy Treister ^F	Daniel Wade ⁺	Ladan and Mark Whitmire
Jane Schwuchow and Ronald Schwuchow ^{FC}	Jean Richardson and Brandon Smith	Lisa ^V and Kevin Stringer ^F	Jan Koors and Jay Tremblay	Christopher Wagner and Megan McCabe	John Wiff and Kaitlin Meno
Eileen V. Schwuchow- Wehrheim and Thomas Wehrheim	Charles F. Smith ^F	Christine M. Struminski	Linda Trujillo and Joe Schreiber		Monica Wilkins ⁺
Paola Sebastianelli	Kristy Smith and Steven Constantine ^{C+}	Chi Hwa W. Su ^{CV}	Mr. and Mrs. John P. Tubutis ^F		Josie Williams
		Heather and Raj Sultanian ⁺	Conor Tulley ^C		Megan K. Williams ^{CE+}
		Mr. and Mrs. Mark Sutton	Mr. and Mrs. John E. Tulley ^{F+}		
		Janis F. and Hobart K. Swan ^C	Adam Tumas, Jr. ^F		

Patricia Williams^{*}
 Audrey Williams-Lee and
 Byron Lee
 Marilyn and Brian Wilson
 Karen G. Wilson
 Laura Wilson
 Mr. and Mrs. Timothy R.
 Wilson^f
 Alvin Windyboy
 Kelvin Wing
 Malcolm E. Winkler and
 Tiffany Tsui
 Mr. and Mrs. Gregory
 Wintroub^f
 Mr. and Mrs. James R. Wise^{F+}
 Claire Witkovich
 Kerry J. Wojcik
 Sydnei Woody and
 Michael Rayford
 Patricia A. Worth⁺
 Randall Wosilus
 Sam J. Wright and
 Alice Blayne
 Mina and Tim Wright
 Marilyn Wyse-Lyerla
 Susun Xiong and Damien
 Rodriguez
 Ravi Yalamanchi
 Diane Yarborough
 Julia Yoshino Benavente
 Bernadette A. Young and
 Jessica Young-Eleazar
 Linda and Owen Youngman
 Feng Yue and Jiayin Zhang
 Zadek Family Foundation
 Denis M. Zamirowski
 Kristin and Kent Zandstra
 Howard Zar^{FV+}
 Eric R. Zarnikow
 Jennifer and Henry Zemla⁺

Therese Fontana and
 Tighe Zimmers
 Mr. and Mrs. Earl Zingraf^f
 Robert K. Zschernitz^E
 Steve Zutovsky and
 Maureen Sweeney⁺

The Edward E. Ayer Society

The Edward E. Ayer Society recognizes donors who remember the Field Museum through bequests, trusts, and other planned giving or life income gifts.

Anonymous (22)
 Barbara and Steven
 Adelman
 Dr. Katrin Asbury and
 Mr. Shawn Greene
 Rodney Austin
 Mr. and Mrs. James
 H. Banach
 Lorraine and
 Randolph Barba
 Mr. and Mrs. Robert
 D. Becker
 Susan M. Benton^T
 Ruth and Robert Berns
 Lois J. Bider^D
 Susan K. and Willard
 L.^T Boyd
 Richard T. Brannegan
 Frederick W. Brooke III
 Mrs. George R. Brumlik
 Leo R. Buckert
 Valerie and Joseph^V Cablk
 Dianne and Thomas
 Campbell
 Rita and John^T Canning
 Neil M. Chisholm
 Josephine Chyatte

Mr.^T and Mrs. Worley
 H. Clark, Jr.
 Mary Sue Coates
 Mr. and Mrs. Stephen
 F. Condren
 Mr.^D and Mrs. Frank
 W. Considine
 Mark Crane
 Rebecca Davidson^D
 Susan and Mark Dawson
 Cheryl and Michael
 Del Campo
 Janet W. Diederichs
 Candace and Gary Drimmer
 Glenna R. Eaves and
 Christopher J. Boebel
 La and Philip Engel
 Fabio T. Fabbri
 Carl B. Fausey
 Mary and Bruce Feay
 Suzette Feher
 Sally Fletcher
 Dr. and Mrs. Curtis B. Frank
 Penny and John E. Freund
 Glenn L. Gabanski^V
 Linda and Wilbur^T Gantz
 Beth and Robert Gordon
 Gilda M. Greenberg^D
 and Norman Charles
 Greenberg^D
 Delta A. Greene
 Joyce and Timothy^V
 Greening
 Katherine L. Griem, MD
 Mr.^T and Mrs. Lewis S. Gruber
 Tonja Rizai Hall
 Jeanne M. Hansen⁺
 David D. Hiller^T
 Marjorie and John Hines
 Mary P. Hines^D
 Peggy L. Hoberg

Anita and James Hornbrook
 Arlys R. Hunt
 Judy Johanson^V
 Stacy L. Johnson
 Mr. and Mrs. Robert
 A. Jones, Jr.
 Kathleen and Alex Kallend
 Verla Kasmerchak
 Eric and Beth Kauffman
 Constance^T and Dennis Keller
 Mr. and Mrs. Jerry M. Kelly
 Patricia A. Kosmerl
 Jan and Richard^T Lariviere
 Fay and Daniel Levin
 Diane v. S.^T and
 Robert M. Levy
 Gail J. and Robert
 B.^T Loveman
 Janice and Bernard Mack
 Ann C. Mallow
 Patricia A. Malloy
 Marie Spinozzi Marotta
 Mr. and Mrs. Robert
 G. McCann
 Nancy A. McDaniel
 William B. McDonald and
 Ptah Sekhmat Osiris
 M. Madlan McKernan
 Erma S. Medgyesy
 Lois and Robert^V Moeller
 Anne M. Morgan
 Sandra L. Mueller
 Sandra and James Napolitan
 Sheila Naughten and
 Michael Miller
 John P. Nielsen
 Karen A. Nordquist^V
 Mr. and Mrs. John
 R. O'Connell
 Irma Parker^D

Dr. and Mrs. William
 R. Parkhurst
 Jo Ann and Joseph Paszczyk
 Marie E. Peruscini and
 Edward C. Bapple
 Susanne Petersson
 Mr. and Mrs. Richard
 J. Pigott
 Julia Potter
 Mr.^V and Mrs. Mane E. Pritza
 John R. Rahn and
 Patricia E. Rahn
 Dominick S. Renga
 Alan Resetar and
 Donna Resetar
 Richard F. Reynolds
 Anita J. Rogers
 Mr. and Mrs. Benjamin Rooks
 Michael J. Roth^V
 Jeanne M. and John
 W.^T Rowe
 Ryan S. Ruskin^T
 Mrs. John Schlossman
 David L. Schlotterback^D
 Douglas M. Schmidt
 Franklin R. Schmidt
 Patricia O. Schnadig
 Thelma L. Schwartz
 Mrs. Stephen H. Sentoff
 Mr. and Mrs. G.
 Curtiss Shaffer II
 Charlene and Bob Shaw
 David T. Shayne
 Pamela S. Sheffield
 Louise M. Sherman
 Joanne Silver
 Adele S. Simmons^T
 Rebecca Gray Smith^V
 Gabriela and Scott Sparacio

Christopher E. Strangio
 Steven Strohmeier^E
 and Josie Brown
 Judith B. Sugarman
 Linda J. Swanson
 Datin Tan Fui Lian and
 Dato Dr. Robert F. Inger^D
 Lawrence Witry and
 Margaret Tomaszek-Witry
 Linda J. Volino^V
 Rose and Robert Wagner
 Georgean Goldenberg
 David A. Wargowski
 Nestor R. Weigand, Jr.
 Dianne M. Weinand
 Willard E. White, PhD
 Claudia L. Winkler
 Barbara A. Wolf^V
 James G. Young
 Kristie Zessin
 The Zigterman Family
 Christine C. Zogus

2021 Estates and Bequests

The Field Museum recognizes the following individuals for their bequests, legacies, and estate gifts.

Anonymous
Marilynn B. Alsdorf
Carlene M. Blumenthal
Henry T. Chandler
Dr. Evelyn Frank Trust
Lyle Gillman
Jeanne M. Hansen
Mary P. Hines
Susan D. Hoyne
The Humanist Fund
Christopher A. Janko
Edward C. Jerkey
Robert E. Kling
Fay and Daniel Levin
Peggy L. Morrow
Jeanne E. Murray
Irma Parker
Betty D. Prout
Mrs. Alfred Lunt Putnam
David L. Schlotterback
Mary Ann So Ngan
Theodore M. Utchen

2021 Matching Gifts Companies

The following companies generously matched gifts from their employees and retirees in support of the Field Museum in 2021.

Anonymous
AbbVie
Accenture
Adobe Systems Incorporated
Allstate Insurance Company
Bank of America
The Boeing Company
BP
C.H. Robinson
Caterpillar Foundation
CDW Computer Centers, Inc.
Cleveland-Cliffs Inc.
CNA Insurance
Fitch Ratings
The FM Global Foundation
Glanbia Business Services
Google
W.W. Grainger, Inc.
Greater Horizons
HSBC - North America
IBM
IDEX Corporation
ITW
JPMorgan Chase Foundation
John D. and Catherine T. MacArthur Foundation
Masco Corporation
Robert R. McCormick Foundation
McKinsey & Company
Paypal Charitable
Peoples Gas

Quarles & Brady, LLP
Salesforce.org, Inc.
Texas Instruments Foundation
Travelers Community Connections
United Healthcare
William Blair & Company

2021 Gifts In-Kind

Mr. and Mrs. Glenn L. Gabanski
Montenegro, Inc.

2021 Gifts In-Kind to Collections

Anthropology

Erryn Blake
Lori Breslauer
Rueben IronHorse-Kent
Lisle Township Democratic Organization
The Susanne Mathewson Trust
Lynn Meisch
Janice A. Schwegler
Lorene Sisquoc

Botany

Brigham Young University
California Academy of Sciences
Department of Biology, Newberry College
Eastern Illinois University
Government of Yukon
Harvard University
Hiroshima University

Institute of Biological Sciences, University of Tsukuba
Landcare Research
Missouri Botanical Garden
New York Botanical Garden
Ramkhamhaeng University
Russian Academy of Sciences
T. S. Quedensley
Tasmanian Museum and Art Gallery
Umeå University
University of Nebraska Omaha
University of Tsukuba

Geology

Daniel Brinkman, PhD
Matthew Carrano
Juan Carlos Cisneros, PhD
Dave L. Douglass
Jay Piatek
Roy Plotnick, PhD
Benjamin Riegler
Bruce Rubidge, PhD
Roger Smith, PhD
Berhard Zipfel, PhD

Library

Eugene V. Coan
Paul R. Clyne
Aureal T. Cross
Robert Egan, PhD
Shuai Liao
Susan Noel
Charles L. and Mary F. Owen
Paul Michael Taylor
Alfred Traverse
Pat Turen
Edward J. Valauskas
Gladys Wang

Zoology

ABC Human Wildlife Control and Prevention Inc
Candida Abrahamson
Dr. Kee-Jeong Ahn
Hazeem Alkhan
Bob Andrini
Tony Andrini
Tom Anton
Liz Aquina
William Arnemann
Jennifer Arzonetti
Richard Baldwin
Jessica Banon
Daniela Barrios
Jessica Barton
John Bates
Kellie Bauer
Bay Beach Wildlife Sanctuary
Leslie Bayles
Stephanie Beilke
John Belcik
Alex Benjamin
Nancy Bigelow
Gwen Blossom
Louise Bodt
Lisa Boland
J. Borchuk
Nancy Bradt
Brookfield Zoo
B. Buhr
K. Burgess
Barbara Bush
Melanie Cabrera
N. Canner
Joao Caparacho
Elaine Carlson
Kevin Carroll

Emma Casey
Gwen Casey
Joey Catallo
Cassandra Cecola
Centers for Disease Control
Liz Challoner
A. Chapin
Suzanne Checchia
Chicago Bird Collision Monitors
H. Child
K. Chin
Ilya Clark
Jim Coleman
Shana Conner
C. Connor
Steve Constantelos
Norbert Cordeiro
Veronica Cortis
Andrew Cox
Linda Cox
K. Crawford
Rita Crimmins
M. Croft
Kelly Cronin
Aiden Cullen
Luke Dahlberg
Diana Davis
G. Davis
V. Davis-Jemison
Leah Day
Noe de la Sancha
Chris Dee
Terrence Demos
Robyn Dettlerline
Matt DeVilbis
Michelle DiBernardo
Georgiana Dodd
Diana Doerr

Jeff Doty	Steve Griegoliet	Dennis Kingsley	A. Mortons	Mary Anne Rogers	Candace Steffens
Kelly Dougherty	Miriam Guillen	T. Kirvin	Debra Moskovits	Mackenzie Roof	Peggy Stenger
Cheryl Dudeck	Taylor Haines	Justin Konicek	Francie Muraski-Stotz	Kate Ross	Douglas Stotz
A. Duran	C. Halpin	Linda Kopacz	Madeleine Murphy	Laurel Ross	M. Styslinger
Janna Dutton	Jeremy Hamilton	L. Kouba	C. Mysko	Tony Rothschild	M. Sugrue
John Dziadus	M Haptonstahl	Ruth Kurczewski	Yoshinori Nakazawa	H. Nelson Rowley III	Charles Swagel
Glenna Eaves	J. Hebson	S. Kurtenbach	Lauren Nassef	Bob Russ	Kevin Swagel
Josh Engel	Matt Hejna	Alexa Lamprecht	Noel Neel	Lauren Russ	Kathy Swanson
Nancy Engel	Laura Helms	Karla Lara	N. Newhouser	Jill Russell	Paul Swanson
Mr. Mark Evans	Mary Hennen	Jessica Larson	Jana Nu	Patrice Saad	Sandy Swanson
Citaly Fabela	Finn Hershberger	Victor Lefevre	M. O'Brien	H. Sampson	Betty Sweetland
Marty Farrington	Miles Hershberger	L. Lehman	Karen O'mara	San Diego Natural History Museum	Fui Lian Tan
Kevin Feldheim	Tate Hershberger	Dolly Lian	Pam Otto	Thomas Savage	Linda Tartof
E. Feldman	Wren Hershberger	Hans Lim	Cathy Patrick	Sue Saxinger	Tasmanian Museum and Art Gallery
Joe Feliciano	L. Hick	Lincoln Park Zoo	Alison Paul	Rachel Schettler	Steve Terrazino
Yvette Fevurly	Terri Hoehne	Alma Lizcano	Liam Pentangelo	Connie Schreiber	Nguyen N. Thatch
B. Fiszer	Laine Hoffman	Nora Lloyd	Deborah Perry	Sarah Seidler	Michelle Thran
William Forcade	Chris Holden	Dr. John T. Longino	Kate Perryman	Greg Septon	G. Tran
Collan Fromm	S. Holland	Peter Lowther	Dorothy Pesch	Shedd Aquarium	Mike Trinchitella
Brittany Fuller	M. Holmes	Mary Loye	Therese Peskowits	Rebecca Shields	Suzanne Turner
Q. Fulmar	Dr. Jared Homola	Sean Lyon	Julian Kerbis Peterhans	Christine Shimkus	Iris Vendrely
Diana Frigo	Diane Houdek	Sandy Machugin	Dan Peterman	B. Sivertsen	Lorraine Vendrely
Robert Frye	B. Janish	Tess Madden	Kim Polka	Amanda Skerski	Sara Verhaeghe
Ryan Fuller	Stephanie Janulis	K. Manden	Marina Post	Jeff Skrentny	Victoria Velinski
Rebecca Fyffe	Susan Jicha	Gina Manski	Curt Preissner	Alison Sloan	Anita Victorn
Glenn Gabanski	Debbie Johnson	Ben Marks	Annette Prince	Jean Smilingcoyote	Lydia Vieregg
Evan Gallagher	Jessica Johnson	Lucia Marquez-Vigo	Robert Prosis	Jeff Smith	Janet Voight
Leo Gaskins	Lynn Johnston	A. Martens	Melinda Pruett-Jones	Julia Smith	Sarah Von Fremd
Beth Gibbs	Bob Jones	Pamela Martin	Purdue University	Natalie Smith	Tyana Wachterr
Mary Ann Gibbs	Lisa Junkin	Carolina Mayorga	J. Qi	P. Smith	Joana Wawro
Kathleen Gillespie	Chris Kadow-Dougherty	Joel McFarland	A. Quint	Russell Smith	Marcia Weflen
Natalie Gillespie	John Kaiser	Colleen McVeigh	Teri Radke	D. Snyder	John Weinstein
Eric Ginsburg	Valerie Katz	Lynne Mecum	Robert Raimondi	Ana Soares	M. Wenkus
Gerry Ginsburg	Caitlin Kearney	Laura Mendoza	Emmanuel Ramirez	A. Spangenberg	Mary Wiesen
Carl Giometti	Joyce Keithley	Paul Miessler	Edward Rehm	Terri Spratt	Robert Wild
Nathan Goldberg	John Kelly	Paula M. Mikkelsen	Trish Rich	Arlo Stagman	Wildlife Discovery Center
James Graham	Libby Keyes	Laura Milkert	Rawlins Riles	David Stagman	David Willard
Cindy Gray	Yosef Kiat	Anita Morgan	Helen Robbins	Miles Stagman	Jane Willard
Rachel Greely	Mr. Timothy N. King	Sarah Morrissey	Gerri Rode		

Robert Willard
Chris Williamson
Willowbrook Wildlife Center
Roberta Winter
Rebecca Wolf
Lynette Wolfe
David Wong
Ann Woodward
R. Wild
Madison Young
Amanda Zeigler

Research Associates, Adjuncts, and Emeriti

The Gantz Family Collection Center, Keller Science Action Center, and Negaunee Integrative Research Center would like to thank their many Research Associates, Adjunct Curators, and Curator Emeriti for their collaborations over the years.

Kathleen Adams
Windsor Aguirre
William Surprison Alverson
Diana (Tita) Alvira
Grace Anderson
Toni Anderson
Thomas Anton
Gabriel Arellano
Dean Arnold
Gloria Arratia
Peter Avis
Daniel Ballhorn
Rosemary Kathleen Barraclough
Fred Barrie

Brian Bauer
Allison Beck
Tarini Bedi
Deborah Bekken
William Bemis
Daniel Blake
Richard Blanton
Rodrigo Botero
Charles Kevin Boyce
Mark Bramstedt
R. Michael Brattain
Adriana Bravo
Paul Brinkman
Stefania Briones
Christopher A. Brochu
Bennet Bronson
James A. Brown
Michael A. Bryson
William Burger
Jason Bystriansky
Rosa Cabrera
Jacob D. Campbell
Andrew Campbell
Michael Armand P. Canilao
Christopher Carleton Jarrett
Matthew T. Carrano
Mitchel Castro Alvarez
Maria Chacaltana Cortez
Stephanie Clark
Julia Clarke
Michael Ivor Coates
Raymond Codrington
Timothy M. Collins
Richard Condit
Jacob Cooper
Paul Copp
Peter R. Crane
Ana Crespo
Darin Croft

Andrew Davis
Noe U. De la Sancha
Susan DeFrance
Carl W. Dick
Arvin Diesmos
Michael O. Dillon
Molly Doane
Marlene Donnelly
Isabelle Druc
Paul R. Duffy
Mariano Roy Duya
Timothy Earle
Bethany Elkington
John J. Engel
Jake Esselstyn
Ronald K. Faulseit
Margaux Fischer
John Flynn
Michael Foote
Catherine Forster
Adrian Forsyth
Jörg Fröbisch
Gary Galbreath
Elliot Gardner
Bucky Gates
Timothy Gaudin
Daniel L. Gebo
Jochen Gerber
Paul Gignac
Gonzalo Giribet
Ian Glasspool
Mark Golitko
Eric Gorscak
James G. Graham
Anne Grauer
Lawrence Grossman
Thomas Guensburg
Juan Guevara
Attila Gyucha

Jonathan Haas
William Hammer
John M. Healy
Mitch Hendrickson
Josh Henkin
Patrick Herendeen
Andrew L. Hipp
Paul Hockings
Jen-Pan Huang
Sabine Huhndorf
Rainer Hutterer
Boris Igic
Dilyana Ivanova-Zieske
David Jablonski
Christine Janis
Sharon Jansa
Yanzhu Ji
Matthew H. Johnson
Carolyn Schiller Johnson
Laura Junker
Marian Kadushin
Charles Kahindo
Christian Kammerer
Lawrence H. Keeley
Julian C. Kerbis-Peterhans
Douglas Kiel
Susan Kirt
Az Klymiuk
Nicholas (Nic) Kotlinski
David Krause
Daniel Ksepka
Mario A. LaMothe
Vincent M. Lamotta
Charo Lanao
Michael J. Lannoo
Tyrone Lavery
Patrick Leacock
Steven Leavitt
Amanda Lee

Ana Lemos
Blanca León
William Leonard
Scott Lidgard
Mark Liechty
Mark Littman
Jen Lobo
R. Eric Lombard
Dylan Lott
Maria Cecilia Lozado
Robert Lücking
Ernest Lundelius
James Luteyn
Holly Lutz
Miguel Macedo
J. Dylan Maddox
Renan Maestri
Robert Martin
Roberta Mason-Gamer
Wilfredo Matamoros
Elio Matapi
Greg Mayer
Thomas W. McDade
Molly McDonough
Matthew McDowell
Maria Ines Messuti
Paula M. Mikkelsen
Joseph Milanovich
Heather Miller
Phillip G. Millhouse
Antonio R. Molina
John Monaghan
Katherine Moore Powell
Corrie Moreau
Debra Moskovits
Gregory M. Mueller
George Mugambi
Donna Nash
Jon Nations

Eugenio Nearn
Alfred F. Newton
Linda Nicholas
Lisa Niziolek
Philip Novack-Gottshall
Patricia Novick
Lynn K. Nyhart
Janine Ochoa
Rahul Oka
Link Olson
Anna K. Ormiston
Nikos Papadopoulos
Khwannuan Paping
Alison Paul
William Pestle
James L. Phillips
Graham Pickren
Nigel Pitman
Roy E. Plotnick
Fawn Pochel
Jan Johan ter Poorten
Gareth Powell
Ayesha Qazi-Lampert
Ashwin Ravikumar
Timothy A. Rawlings
Gayatri Reddy
Iza Redlinski
David Reid
Robert Reisz
Alan Resetar
Frank Richter
Olivier Rieppel
Marcos Antonio Rios Paredes
Mario A. Rivera
Helen Robbins
Cynthia Robin
Ray Rogers
John Rogner

Laurel Ross
 Daniela Rossoni
 Dakota Rowsey
 Ana Rosa Sáenz Rodriguez
 Evan Saitta
 Alejandra Salazar Molano
 Rachel Santymire
 Apostolos Sarris
 Andre Sartori
 Rachel Scarlett
 Imke Schmitt
 Birger Schmitz
 Hans-Peter Schultze
 Helen Schwartzman
 Christopher Scotese
 Lydia Scott
 Jodi Sedlock
 David Sepkoski
 Paul Sereno
 James Shannon
 Nicola Sharratt
 Neil Shubin
 Christian A. Sidor
 Velizar Simeonovski
 Steven B. Simon
 Michelle Singleton
 Graham Slater
 Arif Smith
 Nathan Smith
 Adam Smith
 Stephanie Smith
 D. Doel Soejarto
 Sergio Solari
 Rodrigo Solinis-Casparius
 Robert Stallard
 Charles E. Stanish
 Thomas Stephan
 Scott J. Steppan
 Betty Strack

Bryan L. Stuart
 Robert B. Stuebing
 Stuart S. Sumida
 Daniel A. Summers
 Stephen Sutton
 Gavin Svenson
 Fui Lian Tan
 Donald Charles Taphorn Baechle
 Margaret Thayer
 Ryan Thoni
 Robert M. Timm
 Luis Alberto Torres Montenegro
 Andrea Twiss-Brooks
 Smiljana Ubois
 Nathan Upham
 David Vaughn
 Benjamin Vining
 Matt Von Konrat
 Harold K. Voris
 Robert Voss
 Heather Walder
 Jonathan Walz
 Erin B. Waxenbaum
 Paul W. Webala
 Mark Webster
 Mary J. Weismantel
 Jun Wen
 Mark Westneat
 Alexandra Westrich
 Robin Whatley
 Alexander White
 Sloan Williams
 E. O. Wilson
 Karen Wilson
 Jack Wittry
 Sera Young
 Nyree Zerega

Women's Board Executive Committee

The Women's Board promotes the Field Museum's scientific programs, exhibitions, and educational outreach. Members facilitate philanthropic activities to provide essential unrestricted and restricted support.

Sandra Deromedi
President (2020-2022)

Sri Sullivan
Vice President (2020-2022) and Bylaws Committee Chair (Ad Hoc)

Donna Greenberg
Immediate Past President

Beth Glass
President Designate and 2021 Gala Co-Chair

Susu Block
Member Engagement Chair

Sophie Bross
Membership Co-Chair

Barb Brown
Behind-the-Scenes Tour Co-Chair

Lindsay Carlton
Science Salon Co-Chair

Lesley De Souza
Science Advisor (ex-officio)

Laura Front
Nominating Chair

Tonja Hall
Secretary (2020-2022)

Carrie Healy
Field Dreams Co-Chair

Beth Kauffman
Annual Appeal Co-Chair

Kathleen Klaeser
Annual Appeal Co-Chair

Kelli Klauber
Behind-the-Scenes Tour Co-Chair

Laurie Kracum
Member at Large (2021-2023)

Jennifer Martay
Field Dreams Co-Chair

Susan McBride
Women in Science Fund Co-Chair

Leslie McLamore
Annual Appeal Co-Chair

Lis Meeker
Women in Science Fund Co-Chair

Bev Pinaire
Outreach Co-Chair

Laura Podjasek
Science Salon Co-Chair and 2021 Gala Co-Chair

Elizabeth Pruett
Membership Co-Chair

Kass Sigal
Member at Large (2020-2022)

Jeannie Tisbo
Treasurer (2021-2023)

Lynda Williams
Outreach Co-Chair and Vice President (2021-2023)

Carole Wood
Women's Board DEAI Committee Representative (ex-officio)



Annual Women's Board Gala

On October 16, 2021, the Field Museum hosted its second virtual gala, which raised nearly \$2.2M in essential support for museum operations. Led by Women's Board President Sandy Deromedi with Co-Chairs Beth Glass and Laura Podjasek, the event was the highest-netting gala in Field Museum history.

The program featured the presentation of the *Marshall Field V Award for Distinguished Leadership* to Past Board Chair John A. Canning, Jr. For 25 years, Mr. Canning has demonstrated an outstanding commitment to the Museum's mission. He and his wife Rita funded the Early Education Science Partnership, a groundbreaking collaboration between the Field Museum and Big Shoulders Fund to improve preschool science education. The Cannings were also among the first to invest in the Museum's *Because Earth* Campaign.

The gala included two curator talks, guest appearances by young people who have benefitted from the Museum's internship and volunteer opportunities, and a tour of Stanley Field Hall in honor of the building's Centennial. More than 120 donors and 300 households participated in the gala celebration of our historic building!

(Above) W. Rockwell "Rocky" Wirtz, John A. Canning, Jr., and Marshall Field V pose with the *Marshall Field V Award for Distinguished Leadership*.

Field Associates

The Field Associates are committed to engaging young professionals through dynamic networking and leadership opportunities, unique programs, meaningful service, and fundraising to support scientific discovery and public education.

EXECUTIVE COMMITTEE

Alin Schubert^T
President 2020–2022

Risha Kotecha
Vice President 2020–2022

Julia C. Webb
Secretary

Alexandria D. Bond
Communications Co-Chair

Jenna Beltrano
Development Co-Chair

Kyle Fonjemie
Development Co-Chair

Anirudh Ajith
EVOLVE Co-Chair

Mariah Vichich
EVOLVE Co-Chair

Emmett Mottl
Membership Co-Chair

Andrew J. White
Membership Co-Chair

Michael Cozza
Programming Co-Chair

Charles Zidek
Programming Co-Chair

Giving Day Ambassadors

The following donors, members, volunteers, and staff served as Giving Day Ambassadors. They played a vital role in the success of this initiative by extending its reach through their networks and by raising funds through personal giving pages.

Christine Alexis^E

Scott Anselmo

Mary Baars

Ann Baikie

Rachel Bailly^E

Stanley Banks^E

Marguerite Baran

David Becker

Megan Bradley^E

Lucretia Brickhouse^E

Lakita Brooks^E

Reda Brooks^E

Luciana Brown^E

Shawn Cobbs^E

Aimee Davis^E

Alex Dehgan

Abigail Derby Lewis^E

Sandra Deromedi^T

David Drake^E

Laura Edgar

Elisa Eldam

Gail Ellenbaum

Alejandra Fabian^E

Trish Farrell^E

Chandler Cohron^E

Jane Garner

Beth Glass

Carlos Gutierrez^E

Tonja Hall

Brandi Harper^E

Alyssa Haslam^E

Erika Hasle^E

MaryPat Hofer^E

Janet Hong^E

Jaap Hoogstraten^E

Syed Husain

Calvin Jenkins, Jr^E

Tiffany Johnson^E

Sabrina Johnson^E

Elyse Kallen

Ellen Karp

Charles L. Katzenmeyer^E

Jamie Kelly^E

Kalyn Kennedy^E

Caryn Knowles^E

Katie Knox

Bakari Lewis^E

Jenna Lieblich^E

Alex Lipp

Ahmad Lucas

Alexandra Lucio^E

William Maas^E

Lileas Maier^E

Kyle Malone^E

Colette Malone

Beth McDonald^E

Catherine Miller^E

Nicole Mireles

Melissa Mladek

Malika Morris^E

Nick Nicketakos

Lisa Niziolek, PhD^E

Ellyn Nugent^E

Carter O'Brien^E

Ariana Ochoa^E

Jingmai O'Connor, PhD^E

Ellen O'Hanlon^E

Michael Padilla^E

Bruce Patterson, PhD^E

Beverly Pinaire

Ella Pittman-Jenkins^E

Elaine Purnell

Ginevra Ranney^E

Eleanore Rendleman

Jacob Robinson^E

Jeanette Rodriguez^E

Latrice Rogers^E

Bridgette Russell^E

Mariah Ryce^E

Debra Salinas

Sasha Samochina

Vicky Sanchez^E

Rachel Sandoval

Sara Saucedo^E

Maggie Schneiderman^E

Dawn Schreiner

Paulette Scrima^E

Jill Seagard

Jacob Shuler^E

Julian Siggers, PhD^E

Michelle Siu

Steve Strohmeier^E

Doug Stroup

Annie Sullivan^E

Scott Tews^E

David Thomson^E

Stephanie Ticas^E

Madeleine Tudor^E

Arman Virani^E

Robert Von Borstel

Damita Webster^E

Ja-Quel April West

Kuwannia Wilkins^E

Megan Williams^E

Darnell Williams^E

Beatrice Zaragoza^E

Julia Zuniga^E

51



Field Associates bring back in-person events

As the Field Museum's first major in-person gathering since the onset of the pandemic, the Field Associates' annual fundraiser featured the Field's new exhibition *Wild Color*. In the theme of *Wild Color*, guests were invited to participate in a hands-on graffiti art workshop and enjoy the night bathed in light, dance to a live band, mingle with Field Museum scientists, and try bites provided by some of Chicago's best BIPOC-owned restaurants. The Field Associates raised nearly \$100,000 through this event, anchored by both Trustee support and more than \$25,000 in new sponsorships secured through Field Associates' networks.

(Left) Field Associates explore science at their annual EVOLVE fundraiser.



9.29.21

GIVING DAYCelebrating 100 years
in our lakefront home

Giving Day 2021

Giving Day 2021 celebrated 100 years in our lakefront home by showcasing initiatives that inspire, engage, and encourage scientists of all ages to take journeys of discovery at the Museum. This Giving Day, 764 supporters raised more than \$285,000. In addition, 113 Ambassadors grew the Field Museum's community to further our mission. 120 staff and volunteer supporters gave more than \$45,000.

As part of the Giving Day celebrations, the Field Museum's own Noé de la Sancha presented on the Field's ongoing work in important South American habitats. Showing the impact that human-caused deforestation is having on biodiversity and ways that we can mitigate the negative impact on mammals.

The Field Museum is grateful to YOU—our members and donors. Your gifts support hundreds of scientific projects that document and safeguard the biodiversity of Earth and inspire the next generation of scientists.

Volunteers

Tanya Aceves
Elise Adams
Craig Adelman
Valery Adorno-Cruz
Evrn Aksoy
Jude Al-Abosy
Kathleen Allan
Bob Andrini
Rietje Angkuw
Barry Aprison
Jan Marie Aramini
Josephine Archuleta
Katie Back
John Balaban
Aide Balcazar
Stanley Banks
Mery Elyn Baron-Pocius
Norma Barron-High
Heather Bartholomae
David Becker
David Beer
Janice Bell Kaye
Sharon Benjamin
Beverly Bennett
Deanie Bergbreiter
Betty Bergstrom
Gloria Berkwits
Dyanna Bernier
Allan Bernstein
Nancy Bigelow
Teresa Black
Erryn Blake
Ilana Blattner
Tracy Blegen
Richard Bloomfield
David Boehnlein
Helen Bonbrest
Katherine Bora

Mary Boswell
Robert Boswell
Theresa Boswell
Nora Bouacha
Hannah Bradford
Laverne Bradley
Sherron Brangman
Laurel Bresnahan
Zalman Brimm
Irene Broede
Alan Brookes
James Brooks
Daniel Browne
Elizabeth Bruce
Luca Brunozzi
Nicole Bucio
Lorraine Bujan
Peter Buol
Andi Burkholder
Joseph Cablk
Tim Cahill
Rebecca Caithamer
Robert Cantu
Mary Jo Cappitelli
Drew Carhart
Emily Carnalla
Maureen Carr
William Carroll
Robert Case
Emma Casey
Briselda Casimiro
Ellis Caspary
Miguel Castillo
Cristina Cavallo
Gastone Celesia
Kathleen Cescon
Mary Chaiken
Thomas Champion
Lap Chan

Lei-Lani Chan
Mei Chao
Lucy Chen
Yeong Fu Chen
Monica Chia-Chien Chen
Karina Choksi
James Christian
Chyi Chung
John Cieszynski
John Cipriano
Emily Clark
Nicole Claudio
Alexsandra Clifton
Linda Clum
William Collins
Lawrence Coronelli
Camila Cortez
Jim Costello
Carole Cotter
Mattie Counts
Margaret Crawford
Bridget Curry
Gabriele Da Silva
Zorica Dabich
John D'Angelo
Harpreet Datt
Anne Davis
Lindsey Davis
Gina De Keersmaecker
Sophie De La Mar
Laura De Los Santos
Carol DeBiak
Karyn DeFranco
Mark DeSantis
Melissa Dessent
John DeVaney
Margaret Dickson
Philip Dittmann
David Dolak

Judy Dooley
Bridget Doyle
Bill DuBois
Laura DuBois
Matteson Duncan
Tareisha Dunlap
John Dunn
Thomas Durica
Jenny Earlandson
Ralph Earlandson
Linda Egebrecht
Gwyneth Elimon
Rachel Elizondo
Eric Elshain
Kelly Enskat
Annamarie Fadorsen
Hannah Farrell
Scott Farthing
Susan Faurot
Marsha Fischl
Scott Fishman
John Fitterer
Sandra Fitterer
Lauren Fitts
Delia Flores
Sharleene Frank
Christine Frazer
Hazel Fricke
Lila Fried
Sylvia Furner
Glenn Gabanski
Gerard Gagne
Molly Gallahue
Patrick Gancarczyk
Maria Garcia
Katherine Gause
Peter Gayford
Margot Getman
Arlene Ghiron

Amandeep Gill	Diep Hoang	Griff Kleeman	Alix Lukas	Soo Lon Moy	Susan Plummer
Paula Glitman	David Hofer	Jessica Klinge	Charlene Lyford	Eduardo Moya	Walter Polinski
Renee Goddijn	Marjorie Hoffman	Joanne Kluga	Richard Lyford	Jeanne Mueller	Constance Porteous
Rachel Goldberger	Lucy Holden	Don Knott	Michael Machura	Sayantoni Mukhopadhyay	Lee Price
Denise Gonzalez	Richard Holm	Simon Knuth	Paula Maia	Eileen Murphy	Veronica Primerano
Mitchell Goodknecht	Sherry Horn	Timothy Knuth	Sandra Maki	Darlene Murray	Holly Prindle
Evelyn Gottlieb	Joanna Hosteny	Sandra Koch	Kenneth Manchen	David Nanberg	Mane Pritza
Fred Goynshor	Diane Houdek	Sebastian Kolaj	Jose Mari	Francisco Nava	David Prus
Charles Grantham	Astarte Howell	Mary Konkel	Georganne Marsh	Betty Newbart	Anita Punkay
Timothy Greening	Briana Hryhorysak	Sandra Kramer	Joann Martinec	Doris Nitecki	Betsy Quail
Ann Grelyak	Patrick Hu	Pearl Kwan	Jesse Martinez	Karen Nolan	Jessica Quesada
Isabella Griesmaier	Mauricio Huertas	Sophie LaBelle	Rachel Martiniak	Karen Nordquist	Elaine Quinn
Victoria Grigelaitis	Sally Hundley	Paige LaCour	Richard Maryonovich	Robert North	Andrea Quintana
Susan Guensburg	Lydia Hwang	Alexa Lamprecht	William McAndrews	Michele Nowak	Fernanda Ramazzini Staudt
Gayle Guzik	Antony Ilievski	Thomas Lane	Stephanie McCarthy	Bryan Nugent	Cristal Ramirez
Richard Guzik	Thomas Ioppolo	Conor Langs	Barbara McGrath	Michael O'Leary	Sonia Rana
Amy Gwilliam	Olga Iwaniuk	Arline Lee	Etta McKenna	Sylvia Orellana	Loran Recchia
Susan Hamnik	Bernice Jacobs	Catherine Lee	Thomas McNichols	Frederick Orendach	Sophie Reilly
Roger Hand	Patrick Jacques	Elijah Lehmann	Robyn Mech	Marie Orendach	Tristan Reinecke
Mattie Harris	Norene Jamieson	Abhimanyu Lele	Elisabeth Meeker	Maria-Isabel Orozco-Vela	Susan Reinke
Alexandra Hecht	Brittany Jenkins	Jessica Lembke	Susan Meschel	Morgan Orzech	Colleen Remsberg
Joyce Hecht	Judy Johanson	Sarah Levesque	David Meyer	Mildred Osgood	Anne Rezabek
Marilyn Hecht	Gregory Johnson	Rebecca Levine	Nancy Miller	Erin Parker	Debra Roberts
Ruthann Heidgerken	Laura Johnson	Joanne Levy	Patricia Miller	Debra Parkhurst	Dwayne Robinson
Toyia Hemingway	Breya Jones	Richard Levy	Thomas Miller	Marianne Parrillo	Richard Rodriguez
Tanya Hemphill	David Kalensky	Sophia Li	Michael Minow	Kathryn Passaglia	Judith Rom
Susannah Hera	Corinne Kampe	Taran Lichtenberger	Richell Mintzlaff	Tom Pawlik	Madison Romesburg
Francis Herder	Allison Kane	Margaret Lippert	Katherine Missig	Andrew Peldunas	George Roth
Wendy Herder	James Kase	Lisa Lisowy	Jacqueline Mitchell	Leah Pellegrino	Magda Roth
Laura Hermosillo	Bruce Keating	Patricia Liszewski	Melissa Mladek	Lilianna Peppers	Michael Roth
Jose Hernández	Thomas Kerstann	Jonathan Littman	Lois Moeller	Olivia Perozo	Janet Rothkopf
Grant Herrejon	Samantha Keyport	Jessica Livingston	Robert Moeller	Mary Anne Peruchini	Joseph Rowlett
Sean Herrington	Mary Ann Khan	Maxwell London	Christopher Molek	Therese Marie Peskowits	Charles Ruedebusch
Richard Hidaka	Irene Khatib	Loretta Long	Anita Morgan	Fran Peters	Verna Ruiz
Timothy High	Shi En Kim	Bryan Lopez	John Morris	Matthew Peters	Troy Rumans
John Hill	Janice Kingman	Nina Los	Don Morrison	James Piekarczyk	Robert Salm
Thomas Hillwertz	Alexandra Kirschner	Peter Lowther	Bonnie Moskowitz	Peter Pissios	Nina Sandlin
Mark Hirsch	Rachel Kistingner	Mary Jo Lucas-Healy	Albert Moy	Roy Pletsch	Maria Sarwark
Edward Ho	Nancy Klaud	Shau Yin Luk	Ram Moy	Christi Plume	Lana Schade

Esther Schechter
Cynthia Schmadeke
John Schmadeke
Annette Schmit
Dawn Schreiner
Phyllis Schulte
Linda Schultz
Daniel Searcy
Veronica Serrano
Karen Sharpe
Chen Shen
Theresa Shen
Elizabeth Shepherd
Judith Sherry
William Sherry
Yvonne Shields
Karen Sholeen
Daina Siliunas
Edith Silva
Elizabeth Simmons
Kathleen Simovits
Terri Sinnott
Evan Sizemore
Marcia Skwarek
Laura Smith
Rebecca Smith
Shea Smith
Robert Somrek
Robyn Sotak
Beth Spencer
Robert Spieler
Rebecca Sponenburg
Karley Spriggs
Thomas Srnak
Marc Stackler
Zoe Stergiannis
James Stola
Donna Stone
Christine Stout

Lisa Stringer
Chi Hwa Su
Diana Sudyka
Lorinda Sues
Lauri Sugerman
Noah Sullivan
Ali Sultan
Michele Sutter
Wayne Svoboda
Kellie Swadba
Jennifer Swillinger
Adrienne Szulczynski
Jeffery Taugner
Rebecca Taylor
Laura Teipe
Thomas Tervanis
Alyssa Theisen
JoAnn Thissen
Olivia Tomasiewicz
Lynette Troha
Gregory Trush
Nicole Urell
Teresa Vaca
Oscar Valera Rico
Mary Valsa
Emilio Vazquez
Anna Villanyi
Darren Vilmin
Christine Vittoe
Linda Volino
Jean Vondriska
Usha Vyas-Major
Tatzyana Wachter Holden
Emily Wagner
Lisa Wagner
Phyllis Walden
Austin Waldron
Jacoba Ward
Denise Washington

Lindsey Weglarz
Aidan Weyland
Conrad White
Lesley Wilkinson
Kuro Wilks
Anne Willmore
Wendall Wilson
Claudia Winkler
Philip Winn
Anna Wisniewski
Jack Wittry
Barbara Wolf
Deena Wolfson
Seck Wong
Lelia Woods
Jane Yakushiji
Constance Yokley
Jameson Yong
Julia Young
Kurt Zahnle
Rosa Zamora
William Zandrew
Howard Zar
Haoyu Zhang
Cassandra Zhao
Charles Zidek
Olivia Zimmerman
Steven Zitowsky

Teen Volunteers
Naomi Altman
Simon Bautista
Jesus Delgado
Amelia Dutta
Conor Finn
Jenae Franklin
Molly Groves
Harrison Howell
Kaylee Kasper
Patrick Keating

Lucia Kustra
Caroline Langs
Samantha Lopez
Evan Madden
Gabriela Mata
Sarah-Jane Nicholson
Jackson Novak
Kaavya Shiram
Vansh Singh
Joshua Vega
Belen Villegas

Tribute Gifts

IN HONOR OF

Phyllis Adams

Heather and Jacob Adams

Apsaalooke Women

Jessica and Paul Seet

Jonah Baran

Jennifer Jones

John Bates, PhD

Alie Ward

Judith S. Block

Mr. and Mrs. Robert E. Wood II

Mark Bouman

Dr. Martha Zuehlke and
Mr. Stuart Greene

The Brain Scoop

Anonymous

Michael Burns

Lisa E. Brown and
Evan S. Brown

John A. Canning, Jr.

Anonymous
John W. Madigan
Madison Dearborn
Partners LLC
Mr. and Mrs. James J.
O'Connor, Sr.
Patrick G. and Shirley W.
Ryan Foundation

William O. Collins

Barbara and Alain
Wood-Prince

James J. Conrad

Joe Schwartz

Roger and Sandy Deromedi

Lidia B. Devonshire

Sandy Deromedi

Jan and Richard Lariviere

John DeWerd

Colleen and Charles
Remsberg
M.J. Mattson

The Elephants

David Manion and
Mindy Kairey

Patricia and Charles Erickson

Judith M. Dye

Marshall Field V

Mr. and Mrs. Oscar A. David
Martin J. Koldyke

Laura and Marshall Front

Maxine and Larry Snider

Wilbur H. Gantz III

Margaret Gantz

Beth Glass

Lenore L. and William S.
Macdonald
Patrick A. and Mary B.
O'Neil Foundation
Mr. and Mrs. David B. Waud

Julie Goff

Niraj and Lorraine Patel

Riley Howard

Andre Howard

Jenna Jones

Katherine Jones

Charles L. Katzenmeyer

Judith M. Gibbs
Thomas Jacobson and
Ramone Munoz
Lenore L. and William S.
Macdonald
Debra Kerr and Steven
Thompson
Aurie A. Pennick, Esq.
Daniel Ronan

Connie and Dennis Keller

Kerry and Temp Keller

Connie Keller Jane C. McLagan	Beverly Pinaire Suzanne Averill	IN MEMORY Mrs. T. Stanton Armour David and Carolyn Nyren Gloria Reddy Pearl Rieger	Withrow Meeker Susan and James Myrick Natural Lands Elizabeth Sharp James Spencer	Patricia A. Stratton Sally F. Ward	Larry Rubin's parents and two cats Larry B. Rubin
Shannon Kennedy Elizabeth M. Gordon	Lesley and Nigel Pitman Judith and Charles Pitman	Harvey Berman Susan W. Mittman	Suyu Ge Ying Rao and Guorong Liu	Thomas Kmiecik Kristy Engelhardt Laura Ann Finn Linda and Tom Fiock Priscilla Jorstad Nanette Kmiecik Mary Samusevich and Alex Samusevich Dr. Staci Turner Diane Wilkinson	Gregory A. Schmit Annette M. Schmit
Robert True Kocinski Brian C. Kocinski and Genevieve E. Hillis	Patrick Lucien Price Michael Price	Lois Bider Christopher Potts	Samuel J. Gentile William Fotis and Sam Gentile ^D		Stephen Sentoff Dr. Glenn A. Arakaki Mrs. Stephen H. Sentoff Joan and David Trushin
Brijnandan La Dar Anonymous	Iza Redlinski Eileen H. Sutter	Cameron Brown Jean and Cameron Brown Foundation Eric Boffeli Gregory A. Borland Stephanie Collazo Lisa Falconer Robert and Marianna Hild Kathryn Ivnik Charles R. Sleezer	Antonio Gueimunde David C. Peterson	Teri Kolaski Mr. and Mrs. Matthew J. Schreiner	Dr. Arthur B. Simon Barbara and Gene Ridberg
Richard W. Lariviere, PhD Mr. and Mrs. Oscar A. David Martin J. Koldyke	Vicky Sanchez Usha Subramanian and Deepak Raghunathan	Roger E. Covey Tang Research Foundation	William B. Hall Mr. and Mrs. Eric R. Schnadig	Richard Martin Amy Hillis	Michael Silverstein Mara Tapp and Michael Silverstein
Robert Loveman Dianna Adelberg	Maggie Schneiderman Nancy Broadbent	John DeWerd Judith and William Sherry Mr. and Mrs. Wilton Stone	Loretta Hampton/Lonzell Fleming Larry Hampton-Pratt	Mary Elizabeth Murphy Anonymous	William T. Stanley, PhD Kristen and Josh Jacobs Rachel and William Simpson
Matt Matcuk Susan Matcuk-Maden	Allison and Steven Schmitt Holly Marihugh and Kris Denton	Neil Andrew Fine, Jr. Dr. and Mrs. Neil A. Fine, Sr.	Phillip Hulben Janice and David Haman	John E. McGovern, III Courtney McGovern	Lynika Strozier Mr. and Mrs. Philip S. Beck Tonja Rizai Hall Jamie M. Kelly
Catherine Miller Jodi Wickersheimer	Elizabeth Sharp Mr. and Mrs. Jeffrey S. Sharp Leslie J. Sawyer	Marie and Carl P. Flick Geoffrey A. Flick	Noel D. Kaplan Mrs. Noel Kaplan	Hugo Melvoin Mrs. Hugo Melvoin	Matthew J. von Konrat and Genea Pitts
Marjorie Moore, and Jessica & Steven Sarowitz Rhea Yap	Julian F. Siggers, PhD The Contemporary Club of Chicago	Michael H. Gantwerker Dr. and Mrs. Brian Gantwerker	Kenneth P. Kaye Donald N. Crampton Donna and Peter Freeman Jane A. Regan	Robert P. Miller Karen L. Miller	Dr. and Mrs. Michael S. Lewis Mr. and Mrs. Robert Zentner
Debra Moskovits, PhD Openlands Project	George B. Simmons, Jr. Sharon Simmons	Suzanne S. Garvin George Bagley and Company L.L.C. Sandy Deromedi Lisa Hancock Jean Herbert Ann Hausmann Paul W. Howard Dorothy Marks	William J. Kirby Ann Balusek Mr. and Mrs. Robert Norcross Burt Sarah Cave Theodore Eckert Foundation Allan R. Glass Beverly and Warren Hayford David F. Kirby Mrs. Lyman Missimer, Jr. Mr. and Mrs. R. Douglas Petrie Jan Shields Mr. and Mrs. John B. Stevens, Jr.	John E. McGovern, III Courtney McGovern	
Susan Neill Anonymous	John Tibble Anthony Furnas and John Tibble			Robert P. Miller Karen L. Miller	
The Friends and Family of Sam and Alissa Nelson Sam Nelson	Jeannie Tisbo Bob DiMeo and Terri DiMeo			Abdulmajid Momin Anonymous	Hsi-Tsin Tsiang Family and Friends of Hsi-Tsin Ma Tsiang / The Hsi-Tsin Ma Tsiang Fund
Lisa Niziolek, PhD Anonymous Lupe Carrillo	Kate, Liz & Greg Webbink Ann and Jim McKee			Anthony G. Montag, M.D. Katherine L. Griem, MD	Jane Tyner The Monday Docents Julie Moyer
Our curious grandchildren Adele Martel, MD, PhD and Roland Martel	James Weisler Julie Weisler			Lynn Raimondo Stanley J. Parzen	Nancy L. Wald The Humanist Fund
Laura Panko Mary Finn	William F. Wise Janice Greenberg Ellinwood			Jack Ridley Emily K. Ridley and Manuel Castro	Bill Wise Dr. Donna Greenberg George Wolnak Sandor Goldsetein Geneva Sbonik John M. Snider
Bruce D. Patterson, PhD Alex Dehgan	Vivian Yoder Emily R. Sutter			Fred Rotto Mei C. Chao Helga and Robert Rothweiler Ling-Ling L. Wei Isshi Yamada	
	Judy Zagorin Mr. and Mrs. Daniel T. Zagorin				

The Field's Rice Native Gardens include several educational signs that identify different plants and help visitors learn about the native flora of Illinois.



IN MEMORIAM



Jean Reddy Armour

Mrs. Armour's relationship with the Field began in 1961, when she joined the Museum as a Founders' Council

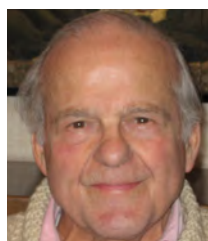
member. She was elected to the Board of Trustees in 1977, and later as a Life Trustee, a role she served until her death. She was a cherished member of the Women's Board, and served as its President from 1982 to 1984. She was the founding chair of the Friends of the Field Museum Library and worked as a volunteer in both the Anthropology and Birds divisions. In addition to being an avid bird watcher and enthusiast, Jean was a skilled bird skinner and dresser. The Field Museum is proud to hold several of her specimens in its Birds collection.



Timuel D. Black

Mr. Timuel D. Black passed away in October 2021 at the age of 102. He was beloved for his vibrant personality as a Chicago storyteller, civil

rights leader, historian, educator, veteran, author, humanitarian, mentor, and friend to so many—including staff at the Field Museum. His wife, Mrs. Zenobia Johnson-Black said it best at his memorial, "Tim loved people. He loved justice. He loved teaching and he loved me. Tim loved himself and consequently he could show love to others. He grew up secure in the knowledge that he was loved and that his life mattered."



Roger O. Brown

Roger O. Brown was an important and active member of the Chicago financial and philanthropic communities. With his wife Barbara,

Mr. Brown was a passionate supporter of many Chicago civic organizations and universities. For more than 60 years, Mr. Brown and his late wife Barbara Brown were active members of the Chairman's Circle, Founders' Council, and Women's Board, and generously funded Field Museum endowments supporting a postdoctoral fellowship, and mammal, bird, and evolutionary biology research.



Jim Conrad

Jim Conrad, a longtime friend of the Field Museum along with his wife Carol, believed in supporting the mission of the institution

and inspiring the next generation of scientists as a proud supporter of Giving Day. Jim generously served his community as a dedicated educator for more than 35 years and in his position as a Bolingbrook Park Commissioner.



Richard Duchossois

A lifelong Chicagoan, Richard Duchossois was a prominent businessman and World War II veteran whose

name is synonymous with the storied Arlington Park racetrack. Through the Duchossois Family Foundation, he generously supported medical and scientific advancements, along with the Field Museum and other major Chicago cultural institutions.



Suzanne S. Garvin

Suzanne S. Garvin was a member of the Women's Board since 1975 and a passionate volunteer for youth programs

at the Field Museum, the Chicago Symphony Orchestra, the Cub Scouts, and elementary school libraries. Along with her late spouse, John S. Garvin, Mrs. Garvin was a generous Field supporter for more than 45 years.



Pamela Kelley Hull

Pam Hull was a friend of the Field for 60 years serving as a Life Trustee and Charter Member of the Museum's Women's Board. She was the maternal grandchild of Stanley Field and

paternal grandchild of William V. Kelley, whose expeditions acquired remarkable specimens for the Museum. Mrs. Hull was a generous donor and supported the restoration and exhibition of the Malvina Hoffman sculptures.



Kenneth Peter Kaye

Kenneth Peter Kaye, a cherished member of the Field Museum Founders' Council donor community for over 20 years, died in his home on May 26, 2021 at the age of 75. Among many Field

Museum programs, the Parker Gentry Award for Conservation Science was of great importance to Ken. He is survived by his wife Janice Kaye, his four children and five grandchildren. In addition to Kenneth's love and support for the Field Museum, he was a leader in the field of family business dynamics, an avid traveler, published many books, and was dedicated to supporting his community through the Howard Area Community Center, North Lawndale Employment Network and Evanston Public Library.



William J. Kirby

Long time member of the Founders' Council and Science Action Committee, "Jay" Kirby passed away on June 30, 2021. He and his wife, Catherine, cared deeply about the wide-ranging

outreach of the Field, and were especially committed to community conservation efforts in Chicago. We celebrate the terrific impact Jay has made on our institution.



Robert E. Kling

The Field Museum fondly remembers Robert "Bob" E. Kling, a lifelong fan of the institution. Bob's affinity for the Field Museum stemmed from his love of learning and his commitment to

conservation. He had generously named the Field Museum as a beneficiary of his Trust, and last year the Museum received a remarkable \$600,000 gift from his estate. We are grateful to be a part of Bob's inspiring legacy.



Frederick A. Krehbiel

A supporter of the Field Museum for decades, Fred Krehbiel was an admired civic leader and former CEO and co-chairman of electronics giant MOLEX. He was a staunch advocate of Chicago's non-profit

community, serving on philanthropic boards across the Chicagoland region. Fred will be remembered for his caring and generous spirit.



Lorin I. Nevling, PhD

Lorin "Larry" I. Nevling, Jr., former Curator of Botany and Director at the Field, passed away on January 17, 2022, at age 91. Larry received his BS in Biology from St. Mary's College in Winona,

Minnesota, followed by service in the 44th Infantry Division, US Army. He received his PhD in Botany from Washington University in St. Louis in 1959, and joined Harvard University. In 1973 he was hired at the Field as Curator and Chair of Botany, and was eventually appointed Assistant Director for Science and Education. In 1980, he became Director of the Museum until he left for a new role as Chief of the Illinois Natural History Survey in Champaign in 1987.



Sally Searle

The Field Museum community mourns the loss of Sally Burnett Searle, who passed away in May 2021. An avid sportswoman with a passion for the outdoors, Sally was an active volunteer and benefactor

of many conservation-oriented organizations, including the Field. She and her late husband, Bill, a Trustee of the Museum, supported the Field for more than fifty years, and were instrumental in the 2011 gift to update the Searle Family Lounge. We are grateful for Sally's friendship, generosity, and positive spirit, and for the enduring philanthropy of the Searle Family over more than seven decades.



Laura Fairbank Sudler

Field Museum benefactor, Laura Fairbank Sudler, passed away on August 18, 2021. Mrs. Sudler was an accomplished collector and her donation of Chinese textiles and

accessories made a meaningful impact on the Field's collections. She and her husband, Louis, were dedicated supporters of many Chicago institutions, including the Peggy Notebaert Nature Museum and the Art Institute of Chicago. She was a traveler who led countless expert journeys of discovery for her family and friends.



Elizabeth Jane Tyner

Elizabeth Jane Tyner passed away on October 11, 2021 in Sydney, Australia. Mrs. Tyner volunteered at the Field Museum for 18 years, bringing exhibitions to life for thousands of visitors. Jane

had a passion for New Zealand anthropology and her favorite place at the Field was the Maori House. Jane is missed by the many docents and Museum staff who worked with her.

Friends we remember

The Field Museum remembers the following friends and supporters who passed away in 2021.

Jean M. Cattell

Dr. Roosevelt Collins

James H. Boone

Lucille Burrus

David C. Hawley

Dorothy D. Hawley

Helmut Jahn

James W. Mabie

Suzanne C. Mack

Richard S. Pepper

Paula Ramos

John Sandner

Louis K. Simpson

Adlai E. Stevenson III

Howard Trienens

THANK YOU!

Celebrating Careers in Scientific Excellence

For more than 125 years, the Field Museum has supported the work of generations of scientists. Each used their expertise and unique experiences to further our understanding of nature and culture. The Field Museum celebrates the following curators who retired in 2020-2022 and joined the Field's distinguished network of emeriti.



Alaka Wali, PhD
*Curator of
North American
Anthropology,
1995–2022*

Alaka was the Museum's first urban-focused anthropologist. Much of her early research focused on the relationship between art and social resilience. As Director of the Center for Cultural Understanding and Change (1995-2010), she pioneered the development of museum-based participatory social science action research and community engagement, and she continues to work with the Keller Science Action Center on conservation programs that engage communities in Chicagoland and the Amazon. For the past four years, Alaka has been instrumental in the development of our newly renovated Native North American Hall, *Native Truths: Our Voices, Our Stories*. She will remain active in these efforts after retiring, as well as preparing papers and field notes for the Museum's archives, traveling to Peru to reconnect with colleagues there, and visiting with family in New York and California!



Bruce Patterson, PhD
*MacArthur Curator
of Mammals,
1987–2022*

Bruce sums up his broad and deep research career in mammal evolution as “rats, bats, and cats.” Born in Panama, he's always been interested in the mammals of South America and over time developed an interest in the coevolution of their parasites. In the 1990s, he began work on the ecology of lions in Africa's Tsavo region (and researching our own man-eaters). He subsequently began work on the Bats of Kenya with African and U.S. colleagues and students. Through all this, Bruce has collaborated with dozens of international colleagues and mentored hundreds of early-career scientists. Research is a curator's first love, and we're pretty sure Bruce will be back at it the day after he retires, but he might find some time for family, gardening and fishing.



Scott Lidgard, PhD
*Curator of Fossil
Invertebrates,
1984–2020*

Scott's work combines paleontology and life sciences. He has spent much of his career studying bryozoans (“spineless scum-sucking bottom dwellers,” in his words) the only phylum of animals in which all species are colonies composed of genetically identical zooids. He is known for his studies of large-scale evolutionary patterns: on local and global ‘competition’ between marine invertebrate groups over millions of years, and notably in a series of classic papers co-authored with Field Museum Trustee Peter Crane, FRS, in *Science*, *Nature*, and *Paleobiology*, that described how flowering plants took over the land during the Cretaceous. Scott continues to pursue research on the concepts of biological individuality and living fossils, but retirement has freed up a little more time to perfect his culinary skills and enjoy his grandkids.



Olivier Rieppel, PhD
Rowe Family Curator
of Evolutionary
Biology, 1990–2022

Most of our Curators have a research niche, but Olivier has several. He is a renowned expert on the Triassic marine reptiles known as sauropterygians, as well as the origin of snakes. In the 2000s, collaborating with Chinese colleagues, he expanded his marine reptile work to include thalattosaurs and protosaurs, and in 2017 he published a book on the origin of turtles. All along, he was publishing on the philosophy of biology, including Karl Popper's significance, the metaphysics of evolving entities, and evolutionary theory and creationism. Oliver shows no signs of letting up just because he is "retiring," but during his occasional breaks we can picture him enjoying a nice bottle of Clos des Papes Châteauneuf-du-Pape, watching *Seinfeld* re-runs, or fishing in a local pond.

(On the back cover) Many insects, like this leaf insect (*Phyllium siccifolium*), have adapted a clever form of camouflage called leaf mimicry. Using green and sometimes brown coloration, leaf insects use this adaptation to hide from hungry predators.

PUBLISHER

Charles L. Katzenmeyer

PROJECT MANAGER AND EDITOR

Chandler Cohron

ASSISTANT EDITOR

Kallie Groves

CONTRIBUTORS

Mark Alvey
Monisa Ahmed
Kenneth Angielczyk, PhD
Katie Arnold
Rachel Baily
Katie Baltensperger
Foreman Bandama, PhD
John Bates, PhD
Deborah Bekken
Aimee Davis
Trish Farrell
Gary Feinman, PhD

Kevin Feldheim, PhD
Adam Ferguson, PhD
Jochen Gerber
Kate Golembiewski
Felix Grewe, PhD
Matt Harmon
Alyssa Haslam
Lawrence Heaney, PhD
Maggie Holcomb
Janet Hong
Jaap Hoogstraten
Kacee Kellum
Jenna Lieblich
Caleb McMahan, PhD
Catherine Miller
Susan Neill
Nigel Pitman, PhD
Jingmai O'Connor, PhD
Ginevra S. Ranney
Rick Ree, PhD
Amy Rogaliner

Amy Rosenthal
Sara Ruane, PhD
Nina Sanders
Maggie Schneiderman
Tom Skwerski
Annie Sullivan
Maureen Turcatel, PhD
Katharine Uhrich
Pia Viglietti, PhD
Emily Wagner
Lauren Wagner
Dawson White, PhD
Lex Winter

DESIGNER

Bark Design, Chicago

PRINTER

The Fox Company,
Milwaukee, WI



Field Museum gratefully
acknowledges the generous
support it receives from the
Chicago Park District, on behalf
of the people of Chicago.



Official Airline of the
Field Museum

PHOTO CREDITS

Cover: Feathers - Field Museum. **Discovery:** *Yuanchauvis* fossil - Wang Min; *Yuanchauvis* illustration - Haozhen Zhang; Forest - Corine Vriesendorp; *Aenigmanu alvarezia* - Field Museum; Jars of fish specimens - Kate Golembiewski; Whitespotted Bamboo shark - Shannon Krieg, Aquarist, Ripley's Aquariums; Whitespotted Bamboo shark egg - Callie Boatright, Aquarist, Ripley's Aquariums; Pia Viglietti - Michael Day; Sara Ruane - Sara Ruane; Foreman Bandama - Foreman Bandama; Dryas leaf - Dawson White, Spotted Skunk - Robert Dowler; Sidnei Melo Dantas - John Bates; Xingu Screech Owl - Kleiton Silva; Archaeologist with braids - KM Prufer; Archaeologists in a hole - KM Prufer; Eruption - David Harlow; United States Geological Survey; Mouse - DS Balet; Butterflies - Felix Grewe. **Impact:** Family visiting *Wild Color* - Field Museum; *Wild Color* blue gallery - Field Museum; Garden Volunteer - Lorena Lopez; Field Explorer Campers - Kyle Flubacker; Digital Learning participant - Kyle Flubacker; *Biomechanics* visitor - Field Museum; Baskets - Field Museum; Johari Cole-Kweli - Jacob Campbell; Northern Bobwhite - Paul Dacko; Jane Goodall - Photo by Jane Goodall, Jane Goodall Institute; Map of Guyana - Nic Kotlinski; Fisherman - Zach Johnsto; Museum Entrance, Museum Insiders - Lauren Wagner. **Honor Roll:** Opening Day Crowds - Field Museum; Because Earth banners - Field Museum; Grainger Science Hub Facilitator - Field Museum; Restoring prairie wildlife - June Molgaard; Shells - Field Museum; Ralph Elmer Riggs - Field Museum; Mark Evans and Maureen Turcatel - Field Museum; Marshall Field V Award - Kyle Flubacker; EVOLVE - Kyle Flubacker; Giving Day - Field Museum.



To view donors to the collections, Field Museum research associates, and Field Museum volunteers visit the digital edition of this report at fieldmuseum.org/about/annual-reports.

© Field Museum, all rights reserved.

THANK YOU!



1400 S. DuSable Lake Shore Drive
Chicago, IL 60605-2496
fieldmuseum.org