



RESILIENCE

2020
Annual Report
to Donors

FIE
MUSEUM
LD.

Dear Friends,

2020 was a year defined by hardship. For the Field Museum, it was also a year of remarkable resilience. Our *Annual Report to Donors* tells that story: in the face of previously unimaginable challenges, your Museum endured, adapted, and forged ahead—thanks to the unwavering support of donors like you.

We opened new exhibitions—*Apsáalooke: Women and Warriors, Home Is Where the Jaki Is*, and *A Natural Talent: The Taxidermy of Carl Cotton*—highlighting the creativity and great skill of individuals engaged with the world around them.

Though the Museum was closed to the public for more than half of 2020, we remained "open" online. Virtual programs, featuring Field scholars and collections, reached students, families, members, and new global friends.

We learned more about life across time and around the world—from the foundations of good government in ancient societies to enormous fish of the Amazonian rainforests. Field Museum scientists added new species to the collections and discovered, in a famous meteorite, the oldest solid material ever found on Earth—an astonishing 7 billion years old.

We hope you'll enjoy reading about these and other achievements made in spite of the COVID-19 pandemic.

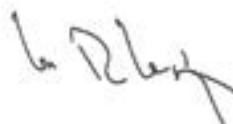
Resilience is a story that runs throughout our collections: for millions of years, humans and the natural world around us have adapted in the face of hardship, discovering new ways to live and thrive.

We are grateful for brighter days ahead and for your continued partnership.

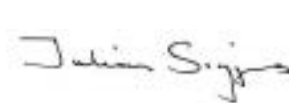
Sincerely,



Wilbur H. Gantz III
Chair, Board of Trustees
(2018-2021)



W. Rockwell Wirtz
Chair, Board of Trustees
(2021-2024)



Julian Siggers, PhD
President and CEO



(On the cover) Beaded Crow
wallpaper design created for
Apsáalooke Women and Warriors.
Beadwork by Elias Not Afraid.

RESILIENCE | 2



DISCOVERY | 6



IMPACT | 14



HONOR ROLL | 22



RESILIENCE

2020 brought loss and suffering to so many across the globe. The Field Museum was closed for several months to keep staff and visitors safe. Despite these challenges, our research, collections management, conservation action, learning and community outreach continued.

Field Museum Science can Help Prevent the Next Pandemic

COVID-19 made its way to humans from animals, although exactly how is still a topic of scientific debate. To better understand such diseases and find ways to prevent future pandemics, museum scientists believe the answers lie in developing a better understanding of the animals that help spread them. Preserved animal specimens in collections at natural history museums around the world are key to this research over time.

At the Field, scientists are studying viruses, including zoonotic viruses like COVID-19, to determine their origins and behavioral patterns. "Museums are incredible repositories of biodiversity information. We now have tools to study materials in museum collections in ways never before possible, putting us in an ideal position to get ahead of viruses and other disease-causing agents," said John Bates, PhD, Curator of Birds in the Negaunee Integrative Research Center.



Bats: Friends or Foes

As COVID-19 spread rapidly across the globe, two Field Museum scholars in the Negaunee Integrative Research Center—Bruce Patterson, PhD, MacArthur Curator of Mammals and Steve Goodman, PhD, MacArthur Field Biologist—published long-term studies on bats, including the discovery of four new bat species by Patterson's team. Their work illustrates how coronaviruses and bats have evolved together for millions of years, and how habitat destruction causes disease spillovers from animals to humans.

These findings—rooted in Field Museum collections and scholarship—will inform decisions that address future public health crises. Equally important, the research of Field scientists can influence human behavior that previously exacerbated these issues.

(Above) Members of a new species of *Hipposideridae* (Old World leaf-nosed bats) size up intruders at an abandoned gold mine in western Kenya.

Field Museum Learning Connection

In response to challenges faced by students, teachers, and families in one of the most uncertain academic years on record, Learning Center staff launched a brand-new classroom partnership called Field Museum Learning Collection. The program aims to connect classrooms with museum educators, scientists, collections, and resources through meaningful and authentic virtual learning opportunities. Recognizing the evolving and varied ways in which teaching and learning are happening across the country in the 2020–2021 academic year, the program was designed to flexibly support teachers and students in remote, blended, or socially distanced in-person learning environments. Truly a cooperative effort, staff across the Museum supported this work by serving as guest speakers and collaborators. Over the fall and spring semester, more than 90 teachers and nearly 10,000 students will have the opportunity to learn and engage with museum content, collections, and staff.

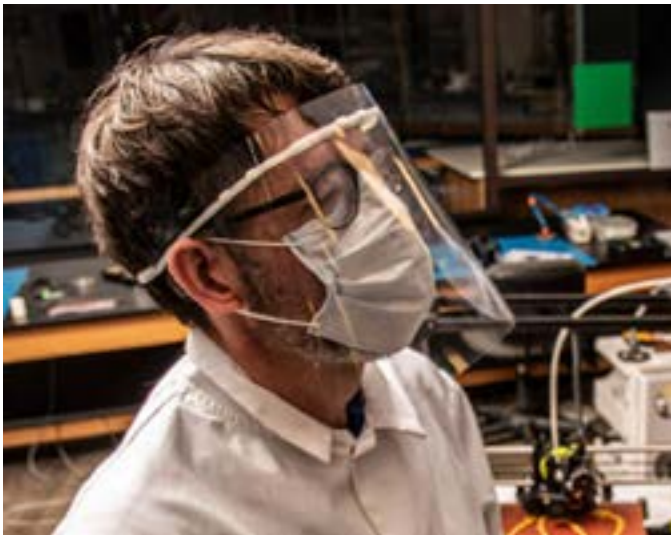
Collections Assistant Jim Louderman shows off one of his live tarantulas during a virtual Field Museum Learning Connection presentation.



Mobilizing Museum Resources for the Community

In the Gantz Family Collections Center, Regenstein Conservator JP Brown repurposed the Museum's 3D printers to create NIH-approved face shields. With the help of other Museum staff, he produced and delivered face shields locally to Hope House Meals on Wheels, United Way, and HCR Manorcare. More than 1,500 face shields were also delivered to the Navajo Nation, who had more COVID-19 cases than any of the surrounding states and were in desperate need of Personal Protective Equipment.

Regenstein Conservator JP Brown uses the Field Museum's 3D printer to create face shields.



Bringing Field Museum Science Home

(Right) Virtual Field Summer Camp allowed a young scientist to explore plants in her own backyard.



397,449

students and families served by all learning center programs

286,751

students and families served by online programs

181,291

visitors engaged in Grainger Science Hub activities

11,774

Chicago Public School students served through on-site and off-site programs

636

students engaged in virtual summer camps

100+

virtual events for members and donors

64

new online family and teacher resources created

Aid to the **People of the Amazon**

COVID-19 hit the people of the Amazon especially hard. Working with an extensive partner network built over the last two decades of conservation work, the staff from the Museum's Keller Science Action Center helped secure medical kits for communities in northern Peru. They also worked to ensure Indigenous people stranded in the city of Iquitos, Peru, had food and medical care and were able to return safely to their rural communities. They assisted in the creation and dissemination of fliers, radio spots, and other materials with accurate and up-to-date information about the virus and how it can be prevented and managed. Minimizing the human toll of this virus is essential to the success of the Museum's and its local partners' vision of conservation for wellbeing in the Amazon.

(Below) COVID-19 spread via river travel into remote parts of the Amazon, where an entire village may depend on a single healthcare worker or healer. In these regions, the majority of the population is Indigenous and considered particularly vulnerable to the virus.



Socially Distant **Dinos and Blood Drives**

While closed, the Field Museum hosted two Red Cross blood drives to address the national shortage of blood for hospitals. Beautiful and cavernous Stanley Field Hall is one of the only indoor spaces in Chicago large enough to safely hold a blood drive with proper social distancing. In a time of great need, the Field was proud to serve the community.



DISCOVERY

Behind the scenes, the research of 140 staff scientists fuels discovery for the Field's visitors, members, and young explorers. In 2020, despite all the challenges of working from home and social distancing, dedicated staff continued their important work of caring for the Field's 40 million objects and specimens, while continuing to explore and learn more about the Earth and its peoples.

Mountain
Biodiversity



One of the big questions in biology is why certain plants and animals are found in some places and not others. Mountains are laboratories for scientists tackling these questions because they are home to many species, due in part to unique habitats formed at different elevations. In a new study, Curator of Flowering Plants Rick Ree, PhD, of the Negaunee Integrative Research Center and his colleagues examined plant life in China's Hengduan Mountains. They found that the collision of the Indian tectonic plate with Asia and intense monsoons created a rugged landscape that accelerated the evolution of new species. This study sheds light on the conditions that create rich versus poor regions of biodiversity, and helps scientists predict how alpine life today may be affected by climate change.

(Opposite) Plant specimens collected by Ree and colleagues in the Hengduan Mountains helped them discover the flora's ancient origins.

(Above) Curator of Flowering Plants Rick Ree collects specimens in the field.

\$3,800,000

federal and state research grants awarded

20,000

specimens digitized by **554** volunteers

225

new research papers published

150

ongoing research projects

76

graduate students advised

66

new species to science discovered

33

interns to all centers

14

post-doctoral researchers supported



Protecting the Amazon is **More Than Trees**

When you think of the Amazon, images of tall tree canopies, jaguars, and colorful parrots probably come to mind. But many of the rainforest's secrets can be found in the watery depths of its rivers and lakes. And, because fish living in these waterways span the entire South American continent, studying them helps conservation scientists, like Lesley de Souza, PhD of the Keller Science Action Center, understand what makes connected ecosystems in the rainforests healthy. Fish are also incredibly important to local communities living in the Amazon as their main source of protein. Protecting the full environment, from the parrots in the trees to the fish in the rivers, is key to mitigating the impacts of climate change and ensuring the health and longevity of biodiversity.

The Archaeology of Good Government

What makes democratic (“good”) governments go bad? MacArthur Curator of Anthropology Gary Feinman, PhD, and his colleagues compiled demographic and economic evidence that some pre-modern states and empires were less autocratic than previously believed. Feinman compared 26 ancient Mesoamerican political centers and discovered a correlation between the nature of political organization and the length of time those centers remained dominant in their region: centers with good governance endured longer than those ruled by autocratic regimes. In another study, Feinman and colleagues also found that when “good” governments did eventually collapse, the devastations were more severe and generally occurred when leaders broke the social contracts that governments had with their people.



(Above) Pyramid of the Sun and Street of the dead at Teotihuacan in central Mexico.

(Opposite) Conservation Ecologist Lesley de Souza (center) and a team of local partners catch and tag a huge arapaima in the Amazon.

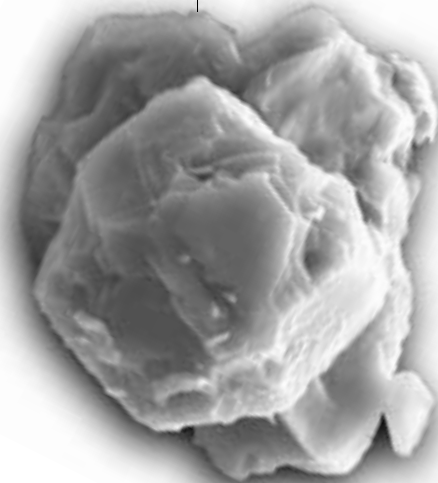


Murchison Meteorite

In early 2020, Field scientists discovered stardust in the famous Murchison Meteorite that formed up to 7 billion years ago—making it the oldest solid material ever found on Earth. Robert A. Pritzker Curator of Meteorites Philipp Heck, PhD, and his colleagues studied this stardust to isolate rare presolar grains and determine what kinds of stars they came from. The presolar grains serve as time-capsules that predate the Solar System, allowing scientists to study the history of stars.

(Above) Emily and Kim Gillick with pieces of “Murchison” on the floor of the Post Office in Murchison, Victoria (Australia) in 1970. Many of these pieces would end up with the Field Museum.

(Left) Scanning electron microscope image of a presolar stardust grain from the Murchison Meteorite. The grain’s longest dimension is 8 micrometers.



Feathery Accents: Evolution in Action

Birds make all kinds of chirps and hoots to communicate with each other, but Field Museum research affiliate Valentina Gómez-Bahamón discovered that a tropical bird called the Fork-tailed Flycatcher communicates through the fluttering sound of its feathers. By analyzing recordings of the birds in flight, she found that subspecies with different migration patterns have unique “dialects” in the sounds their feathers make. Since the birds likely use these feather sounds to find mates, the differences in wing shape and feather sounds could be driving different populations to split into completely separate species. It’s a snapshot of evolution in action.



(Above) Fork-tailed flycatchers perch on branches.



Building a More **Complete Collection**

The Field Museum's 40 million artifacts and specimens fuel scientific discoveries by researchers around the world. Each new specimen has the potential to unlock information about Earth and everything that lives on it. Led by the Field Museum's Negaunee Collection Manager of Mammals Adam Ferguson, PhD, together with Mammals Collection Assistant Lauren Smith and Mammals Research Associate Molly McDonough, a collections team visited the mountains of west Texas to study mammal adaptation to global climate change. Using holistic sampling techniques, the team collected 79 mammal specimens, including 13 species representing the first modern tissue samples for the Field. Three of these specimens have already been loaned out for external research projects.



(Above) The combined Field Museum and Angelo State Natural History Collection field team: (from left to right) Molly McDonough, PhD; Loren Ammerman, PhD; Robert Dowler, PhD; Rebecca Scott; Adam Ferguson, PhD; Bethany Guajardo; Lauren Johnson; and Dianna Krejsa.

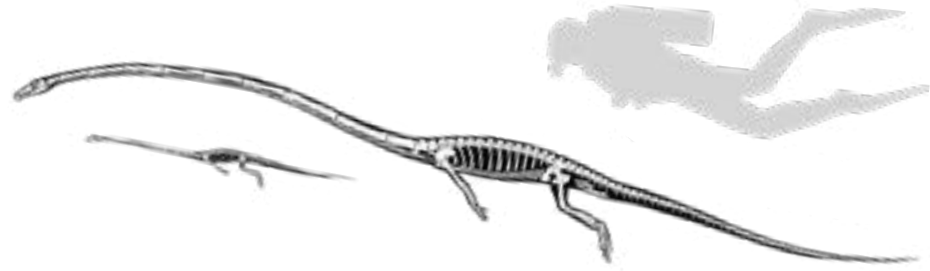
(Left) Ferguson and McDonough hop into a truck (no, they did not cause that dent) at the base of the Sierra Viejo Mountains after a morning of checking traps.



The Weirdest Fossil **Just Got Weirder**



Two hundred and forty-two million years ago, there lived a very bizarre animal. This ancient reptile, called *Tanystropheus*, had a neck that was three times the length of its torso. Scientists have been puzzling over how and where this species lived, but a new study by Stephan Spiekman, PhD, (University of Zurich) and the Field Museum's Rowe Family Curator of Evolutionary Biology, Olivier Rieppel, PhD, shed light on this weird creature. Rieppel and Spiekman reconstructed a *Tanystropheus* skull in unprecedented detail, revealing the species had very clear adaptations for life in water. They also discovered the two sizes of *Tanystropheus* fossil that have been found are two different species.



(Left) The long-necked *Tanystropheus* stealthily approaches prey. Scientists know that the larger of the two co-existing species of *Tanystropheus* ate fish and squid from studying the stomach contents of *Tanystropheus* fossils.

(Above) An illustration of the larger and smaller species of *Tanystropheus*, with a human diver for scale.



Welcome Jingmai O'Connor

In October, Jingmai O'Connor, PhD, joined the Field Museum as Associate Curator of Fossil Reptiles. Originally from Pasadena, O'Connor is a world expert in flying dinosaurs and the transition of dinosaurs to birds. Previously, she was a professor at Beijing's Institute of Vertebrate Paleontology and Paleoanthropology. O'Connor is eager to bring her expertise to fossil bird collections at the Museum and share science with the public.

Jingmai O'Connor with a fossil specimen during the filming of the PBS documentary "When Whales Walked."

IMPACT

The Field Museum is dedicated to sharing facts, supporting communities, and training the next generation of scientists.



Jordynn Paz photographed
by Adam Sings In The Timber.
Part of the *Apsaalooke Women
and Warriors* exhibition.



Apsáalooke Women and Warriors

Apsáalooke Women and Warriors, a new exhibition curated by Apsáalooke scholar Nina Sanders, opened in March. It showcased the history, traditions, and beliefs of the Apsáalooke people of the Northern Plains, also known as the Crow.

"I am honored to lead the curation of *Apsáalooke Women and Warriors* with the assistance of other Apsáalooke scholars and artists, as it is the first time the Field Museum has invited a Native American to curate a major exhibition," said Sanders. "My hope is that the public will connect with us deeply and endeavor to learn more about all Indigenous people."

"All Apsáalooke people are artists; each person is born with or acquires gifts that make life beautiful and meaningful. From birth, Apsáalooke people are taught to care for all things by utilizing our gifts. Each artwork in *Apsáalooke Women and Warriors* embodies the deep respect each artist has for the dedication, time, and love that goes into a work of art. Each piece is a celebration of our culture," she added.

(Above) Ishbínnaache, an Apsáalooke war shield from an unknown original owner and artist. (Catalog Number 69639).



Wherein Lies the Beauty of Life, painting by Ben Pease, featured in the exhibition.



Black History Month at the Field Museum

Museum wide celebrations of Black History Month in February brought awareness to the achievements of individuals of African heritage and recognized their contributions throughout history. This initiative honors a tradition started by Chicago educator Carter G. Woodson in the 1920s.

A team of Museum staff collaborated to develop programs, inspired by the Museum's past. An exhibition about the extraordinary career of African American artist, Carl Cotton, was the central event. The exhibition, in the T. Kimball and Nancy N. Brooker Gallery, explored Cotton's 26-year career as a taxidermist in the Field's Exhibition department. His work can be found throughout the Museum.

Black scientists presented lectures during month long programs; information about the African Diaspora was featured in Africa collections tours; and Ghanaian residents partnered with the Museum to share their culture and tradition.

Carl Cotton's grandson, TJ, explores bird models created by Cotton during his time at the Field Museum.

Celebrating Native Heritage at the Field

The month of November marked the 30th anniversary of the federal designation of Native American Heritage Month. Though the *Native North America Hall* is currently being renovated, the Field Museum found creative ways to celebrate. Several exhibit cases throughout the museum now carry new sticker labels in both Ojibwe and Navajo languages. Curated and designed by Field Museum staff members J. Kae Good Bear, Michelle Brownlee, and Nel Fetherling, the display stickers bear the names and descriptions of various plants

and animals indigenous to North America. Additionally, visitors could participate in Virtual Meet-a-Scientist presentations that occurred throughout the month, including talks on topics of Indigenous food sovereignty by Research Scientist Eli Suzukovitch, North American mammal hair identification by Conservator Dan Kaping and the science behind traditional moccasins by guest speaker Geneva Good Bear.

(Below) An American bison on display with labels in Dine (Navajo) and Ojibwe. (Specimen Number 21517).





A Fruitful Year for **Field Guides**



The Keller Science Action Center expanded its digital toolkit and increased participation in the popular Field Guides program. The Center launched a new guide submission system with step-by-step instructions in English, Spanish, and Portuguese. Field Guide specialists engaged a community of guide authors and users through virtual workshops and social media. The Keller Center team also collected stories of the guides' conservation impact. Field Guides were downloaded almost a million times by users in 190 countries, and submissions increased by 75% compared to 2019. 82 new guides were published, including *Plants of Greenland*, the most comprehensive guide for Greenland to date; the *Beginner's Field Guide to Spring in Chicagoland*, featuring watercolors by artist-in-residence Peggy Macnamara; and *Anfibios de la Cuenca Baja del Putumayo*, based on data collected during the 31st rapid inventory, which took place in the Putumayo River region of Peru and Colombia in 2019.

722,582

Field Guide downloads

10,995

young people engaged
in conservation



9,483

Chicagoans engaged
in conservation action

1,179

total Field Guides
published to date

130

events and
trainings





Co-founder of the Laikipia Rabies Vaccination Campaign and Field Museum scientist Adam Ferguson, PhD, holds a small puppy during the 2019 LRVC in Laikipia County, Kenya.



Museum Scientists Fight Rabies in Kenya

Rabies may be rare in America, but the disease kills almost 59,000 people every year—21,500 on the continent of Africa alone. A team of scientists and volunteers, including Adam Ferguson, PhD, Negaunee Collections Manager of Mammals, has been fighting to eradicate this highly preventable disease and protect local communities and wildlife. To date, the Laikipia Rabies Vaccination Campaign (LRVC) has vaccinated more than 40,000 domestic dogs at no cost to their owners. Successfully eliminating rabies from Laikipia County will require vaccinating more than 70% of the domestic dog population—currently estimated to be around 35,000 animals—for more than three years, a goal the LRVC is well on the path to achieving.

(Above) A puppy waits patiently for its free rabies vaccine.



(Left) Carl Cotton puts the finishing touches on a lily pad in the “Marsh Birds of the Upper Nile” diorama.

A Natural Talent: The Taxidermy of Carl Cotton

In January, the Museum opened a small exhibition, *A Natural Talent: The Taxidermy of Carl Cotton*. Starting in 1947, Cotton worked at the Field for more than two decades, creating realistic animal figures and exhibitions. Unlike most taxidermists—then and now—Cotton was African American. In February, a museum-wide celebration of Black History Month honored Carl Cotton and his family and friends who helped tell his story.

Exhibition developer Tori Lee said, “Thanks to a group of supportive people in and outside the Museum, I’ve been able to present a portrait of a humble, talented man who was passionate about nature and the art of taxidermy. As I kept digging, I found more and more of myself in Cotton’s story. Like me, he made exhibitions on the fourth floor of the museum. Like me, he was a Black person working at an institution with a complicated racial history. When visitors see this exhibition, I hope they see themselves in Cotton’s passion and determination to follow his dreams.”

While combing through an album of photographs in the Museum's Marshallese collection, Terry Mote paused at a photograph of an unnamed girl and said: "That's my mom." Museum staff were thrilled to present Mojina Jinuna Mote with a print of her photo on a trip to Enid a month later.



Home is Where **the Jaki is**

In 2019, a group of Marshallese students from Enid, Oklahoma visited the Field Museum to create an exhibition celebrating their heritage. The exhibition, which opened to the public in October 2020, is displayed in the Museum's rotating gallery space in the *Regenstein Halls of the Pacific*.

The students, as representatives of their community, were accompanied by Terry Mote, head of the Enid Micronesians Coalition and two of their teachers. Together they visited the Museum, toured the collections, and worked with Museum staff to envision their own exhibition. *Home is Where the Jaki is* features an array of historic and contemporary Marshallese items from the Museum collections, including canoe models, a navigational stick chart, and several examples of handicrafts, or amimono, selected by the students.

(Above) Decorative woven mats called jaki-ed (JAH-ghee-ed) were among the items purchased by Regenstein Collections Manager Christopher Philipp on his trip to Majuro in 2019.

HONOR ROLL

The Field Museum's accomplishments are made possible by a dedicated community of philanthropists. We gratefully acknowledge these donors for their generosity in 2020.

President and CEO Julian Siggers, PhD, explores the paleontology collections with Associate Curator of Fossil Reptiles Jingmai O'Connor, PhD.



Virtual Gala

On October 17, the Women's Board hosted the Field Museum's first virtual fundraising gala, which raised \$1.9M in essential operating funds. Reduced event expenses due to the virtual format resulted in the second-highest gala net revenue in Museum history.

The gala included the presentation of the Marshall Field V Award for Distinguished Leadership to Connie and Dennis Keller in recognition of their philanthropy and advocacy for the Field Museum mission. Having supported the Museum for more than 30 years, the Kellers invested in the *Because Earth Campaign* with an early endowment gift. The Museum's Keller Science Action Center, named in recognition of the Kellers' generosity, focuses on conservation efforts in Chicago and the Andes-Amazon. Connie Keller is the Immediate Past Board Chair of the Field Museum and a member of the Women's Board.

The virtual gala took viewers on a behind-the-scenes journey with the Museum's now President and CEO Julian Siggers, PhD and Museum scholars. Dr. Jane Goodall, DBE, made a special appearance to preview the spring 2021 exhibition, *Becoming Jane: The Evolution of Dr. Jane Goodall*.



(Left) Special guest Dr. Jane Goodall, DBE, UN Messenger of Peace, addressed viewers during the virtual gala.

Board of Trustees

Members of the Board of Trustees offer leadership and philanthropy to make the Field Museum an extraordinary force for science and learning. Thank you.

EXECUTIVE COMMITTEE

W. Rockwell Wirtz
Board Chair
Wilbur H. Gantz III
Board Chair Emeritus
Julian F. Siggers, PhD
President and CEO
John L. Bucksbaum
Vice Chair, Facilities and Administrative Services
Dr. Richard A. Chaifetz
Vice Chair, Government Relations
Richard W. Colburn
At-Large
Robert W. Crawford, Jr.
Vice Chair, Audit
Marsha A. Cruzan
Vice Chair, Development
Jeffery T. Foland
Vice Chair, Marketing
Marshall B. Front
Vice Chair, Investment
Karen Z. Gray-Krehbiel
At Large
Judy P. Greffin
Vice Chair, Finance
David D. Hiller
Vice Chair, Integrative Research
Constance T. Keller
Vice Chair, Governance
Jeffrey B. Keller
Vice Chair, Science Action
Margaret B. MacLean
Vice Chair, Collections
Bobby N. Mehta
Vice Chair, Learning
Michael O'Grady
Secretary

Jessica P. Sarowitz
Vice Chair, Diversity, Equity, Access, and Inclusion
Jai Shekhawat
Vice Chair, Digital Engagement
Matthew K. Simon
At Large
Dawn L. Solomon
Vice Chair, Exhibitions
Jason M. Wortendyke
Vice Chair, Retirement and Benefits

TRUSTEES

Arjun Aggarwal
Herb Alpert
Jean R. Armour
Bob Arthur
Dr. Nana S. Banerjee
Susan M. Benton
Howard B. Bernick
Amy E. Best
Robert D. Blackwell, Jr.
Judith S. Block
Norman R. Bobins
Gail K. Boudreaux
Willard L. Boyd
Jean-Claude Brizard
John A. Canning, Jr.
Gregory C. Case
Worley "H" Clark, Jr.
James W. Compton
David L. Cotton
Mark J. Cozzi
Sir Peter Crane FRS
Kermit R. Crawford
Oscar A. David

James A. Delaney III
Roger K. Deromedi
Sandra E. Deromedi
Daniel A. Diermeier
Thomas E. Donnelley II
Margery Kamin Feitler
Michael W. Ferro, Jr.
Jamee C. Field Kane
Marshall Field V
Michael E. Flannery
James S. Frank*
James J. Glasser
Louise R. Glasser
Donna L. Greenberg*
Jack M. Greenberg
Lewis S. Gruber
Lani Hall Alpert
Adnaan Hamid*
Caryn L. Harris
Wayne E. Hedien
Pamela K. Hull
Richard M. Jones
Michael L. Keiser
Shannon Kennedy
Richard L. Keyser
William C. Kunkler III
Bill Kurtis
Joseph P. Lacher, Jr.
Richard W. Lariviere, PhD
Dr. Ka Yee C. Lee
Jorge M. Leon
Richard Levin
Diane von Schlegell Levy
Robert B. Loveman
Scott P. Marks, Jr.
John W. McCarter, Jr.
Leo F. Mullin
Neil S. Novich
James J. O'Connor, Jr.
James J. O'Connor, Sr.

Christopher A. O'Herlihy
Kenneth W. O'Keefe
Asutosh Padhi
David C. Parry
Aurie A. Pennick
John F. Podjasek III
Peter B. Pond
Scott A. Rafferty
John Rau
Thomas S. Ricketts
John W. Rowe
Ryan S. Ruskin
Dr. Dilara A. Sayeed
Alin W. Schubert
Nydia S. Searle
Michael E. Severino, MD
Jennifer L. Sherman
Adele S. Simmons
Mary L. Smith
Judson Bryant Snyder
Thomas S. Souleles
Kevin P. Stineman
Margaret B. Stineman
Michael Tang
Mark Tebbe
David M. Tolmie
Ryan VanHolsbeke*
Marcus A. von Kapff
Mark R. Walter
Everett S. Ward
Laura S. Washington
Elie A. Weaver
Robert L. Wesley
Miles D. White
William J. White
Melvin D. Williams
Nancy Hamill Winter
Patrick Wood-Prince

As of June 2021

*Term concluded in 2020

Because Earth Campaign

We are grateful to the following donors who made special commitments to the campaign (through April 30, 2021).

\$15,000,000 and above

The Grainger Foundation
Kenneth C. Griffin
Charitable Fund
The Negaunee Foundation
Rita and John^T Canning
Linda and Wilbur^T Gantz
Connie^T and Dennis Keller
Jessica^T and Steve Sarowitz

\$5,000,000 to \$14,999,999

Anonymous (2)
ArcelorMittal
Bobolink Foundation
The Boeing Company
John P. Calamos
Sr. Foundation
Dr.^T and Mrs. Richard A. Chaifetz
Mr.^T and Mrs. Robert W. Crawford, Jr.

The Crown Family
D & R Fund / Glasser and Rosenthal Families
Sandy^T & Roger^T Deromedi
Efroymsen Family Fund
Mr.^T and Mrs.^D Marshall Field V
Hamill Family Foundation^T
The Hobson/Lucas Family Foundation

ITW
Estate of Edward Jerkey
Lindy and Mike^T Keiser
Karen Z. Gray-Krehbiel^T and John H. Krehbiel, Jr.

Fay and Dan Levin
Diane v.S.^T and Robert M. Levy
Lilly Endowment Inc.
John D. and Catherine T. MacArthur Foundation
Robert R. McCormick Foundation
Chauncey and Marion D. McCormick Family Foundation
William G. McGowan Charitable Fund
Swati and Bobby^T Mehta
Gordon and Betty Moore Foundation
National Science Foundation
Northern Trust
Estate of Jan M. Pencik
Jeanne M. and John^T W. Rowe
Joan and Paul Rubschlager
Searle Funds^T at The Chicago Community Trust
Mr. and Mrs.^T Michael D. Searle
State of Illinois Department of Natural Resources
Estate of Nancy Torbet
Mr.^T and Mrs. W. Rockwell Wirtz
\$500,000 to \$999,999
AbbVie
National Aeronautics and Space Administration
Aon
Barbara^D and Roger^D Brown
Jacolyn and John^T Bucksbaum
Joyce E. Chelberg
JPMorgan Chase & Co.
The Andrew W. Mellon Foundation
The Brinson Foundation
Jim and Karen Frank / J.S. Frank Foundation

Renee and Edward
Ross Foundation
Edgar D. Jannotta, Sr.
Magellan Corporation
Nicor Gas
Alice and Charles Palmer
Alicia and Peter^T Pond
Estate of George Rabb
Discover Financial Services
Jai Shekhawat^T
TAWANI Foundation
Estate of Barbara H. West

\$250,000 to \$499,999

Anonymous (2)
Abbott
Paul M. Angell Family
Foundation
Konrad J. Banaszak and
S. Jennifer Sugarman
Bank of America
The Barker Welfare
Foundation
Judy and Howard^T Bernick
Chicago Blackhawks
Foundation
Carolyn S. Bucksbaum

Estate of Rose M. Craig
Gaylord and Dorothy
Donnelley Foundation
Ernst & Young LLP
Exelon
Jamee Field Kane^T/The Edith
B. and Lee V. Jacobs Fund
No. 1
Lori and Michael^T Flannery
Julius N. Frankel Foundation
Laura De Ferrari and
Marshall B. Front^T
GCM Grosvenor

Christina & Ronald Gidwitz
Charitable Foundation
Mr.^T and Mrs. Jack M.
Greenberg
Bill and Judy^T Greffin
Sally Mead Hands Foundation
David D. Hiller^T
Pamela K. Hull^T and
Roger B. Hull^D
Todd Kaplan
Gail J. and Robert B.^T
Loveman
Mr.^T and Mrs. John W.
McCarter, Jr.

David and Susan Milligan
Estate of James
R. Montgomery
Elizabeth Morse Genius
Charitable Trust
Motorola Solutions
Foundation
The New York
Community Trust
Mr.^T and Mrs. Michael
O'Grady
Cathy and Bill Osborn
Estate of Irma Parker
Mr.^T and Mrs. John F.
Podjasek III
Prince Charitable Trusts
Estate of Betty D. Prout
The Regenstien Foundation
Charlene and Bob Shaw
Julie and Matthew K.^T Simon
Dawn L.^T and David J.
Solomon
Cia and Tom^T Souleles
John G. Symons Trust
Charities Fund /
Marshall B. Front^T and Case
Hoogendoorn, Co-Trustees
Michael Tang^T

Robin and Mark^T Tebbe
United Airlines
U.S. Bank

Founders' Council

**The Founders' Council is
the Field Museum's premier
annual giving society.
Members contribute
\$2,500 or more to support
every aspect of the
Museum's mission.**

CO-CHAIRS

Tom Ricketts^T
Kevin Stineman^T
Margie Stineman^T

CHAIRMAN'S CIRCLE OF THE FOUNDERS' COUNCIL

Members of the Chairman's
Circle demonstrate an
exceptional commitment
to the Field Museum with
annual gifts of \$25,000
or more. We gratefully
acknowledge these
leaders in philanthropy.

\$100,000+

Rita and John^T Canning
Linda and Wilbur^T Gantz
Sue Ling Gin Foundation
Trust
Karen Z. Gray-Krehbiel^T and
John H. Krehbiel, Jr.
Lindy and Mike^T Keiser
Connie^T and Dennis Keller
Cari and Michael Sacks /
GCM Grosvenor
Jessica^T and Steve Sarowitz
Mr. and Mrs.^T Michael D.
Searle

\$75,000 to \$99,999

Dr.^T and Mrs. Richard A.
Chaifetz
Jai Shekhawat^T
Mr.^T and Mrs. W. Rockwell
Wirtz

\$50,000 to \$74,999

Anonymous
The Crown Family
Colette Evans and John^T Rau
Mr.^T and Mrs.^D Marshall
Field V

Hamill Family Foundation /
Nancy Hamill Winter^T
Mr. and Mrs.^T King W. Harris /
Harris Family Foundation
Pamela K. Hull^T
Mr.^T and Mrs. Richard L.
Keyser
Diane v. S.^T and Robert M.
Levy
Swati and Bobby^T Mehta
Michael Tang^T
Robin and Mark^T Tebbe
Kimbra and Mark^T Walter

\$25,000 to \$49,999

Anonymous
Anu and Arjun^T Aggarwal
Bob Arthur^T and Susan
Anderson
Konrad J. Banaszak and S.
Jennifer Sugarman
Judy and Howard^T Bernick
Roger O. Brown^D
Jacolyn and John^T
Bucksbaum
Greg^T and Mamie Case
Charitable Fund
Mr. and Mrs. James J. Conrad



Field Forward Symposium

The 2020 Field Forward Symposium invited the best science leaders to gather across continents to explore topics both scientific and cultural. Held virtually, the event captured the unique moment in which we find ourselves. More than 200 donors enjoyed a full week of lectures, panel discussions, and tours of "hidden corners"—spaces rarely accessible to visitors. Highlights of the week included new President and CEO Julian Siggers, PhD in a conversation with natural history museum leaders from Toronto, Denver, and Berlin.

(Left) Trustee David D. Hiller interviews
new President and CEO Julian Siggers
at the Field Forward Symposium.

69th Annual Members' Nights

The Field Museum hosted its annual Members' Nights November 19–21. Originally scheduled to take place in May, this popular event was rescheduled and hosted virtually for the first time. Over the course of three days, 1,350 members joined the virtual celebration which featured 27 Field scholars showcasing objects from the collections not normally on display and collections storage areas that aren't accessible during in-person Members' Nights.



Mark Cozzi^T and James Goeke
Marsha Cruzan^T and Thomas McGinnis
Melissa and Oscar^T David Sandy^T & Roger^T Deromedi
Dr. and Mrs. Eugene F. Fama
Lori and Michael^T Flannery
Marshall and Laura Front^T
Judy^T and Bill Greffin
Colette and Wayne^T Hedien
David D. Hiller^T
Jamee Field Kane^T / The Edith B. and Lee V. Jacobs Fund No. 1
Jeff^T and Molly Keller
Shannon Kennedy^T
William C. Kunkler III^T and Susan Crown
Margaret B. MacLean^T
The Negaunee Foundation
Mr.^T and Mrs. Neil S. Novich
Mr.^T and Mrs. Michael O'Grady
Kenneth W. O'Keefe^T and Jason Eric Stephens
Mr.^T and Mrs. John F. Podjasek III
Alicia and Peter^T Pond
Cecelia and Thomas^T Ricketts
Jeanne M. and John W.^T Rowe
Michael E. Severino, MD^T
Jennifer L. Sherman^T
Adele S. Simmons^T
Julie and Matthew K.^T Simon
Mr.^T and Mrs. Jud Snyder
Dawn L.^T and David J. Solomon
Cia and Tom^T Souleles
Jeannie and Thomas Tisbo
Lori and Marcus^T von Kapff
Elie Weaver^T and Hilton Weinberg

Miles D. White^T
Melvin D. Williams
Mr.^T and Mrs. Patrick B. Wood-Prince
Jason Wortendyke^T and Ariel Knowles Wortendyke

\$10,000 to \$24,999

Anonymous (5)
Barn Road Foundation
Shannon and Larry Bell
Amy E. Best^T
Judith S. Block^T
Rosemarie and Dean L. Buntrock
Linda and Vincent Buonanno
Carol and Tom Butler
The Comer Foundation Fund
Cecilia and Froilan Concepcion
A. G. Cox Charity Trust
Mark Crane
Mr.^T and Mrs. Kermit R. Crawford
Winnie and Bob^T Crawford
Laura and Dave Davis
Janet and Craig Duchossois
Mr. and Mrs. Robert Feitler
The Foland Family^T
The Robert E. Gallagher Charitable Trust
Mr. and Mrs. Camillo Ghiron
Alice and Richard Godfrey
Mr.^T and Mrs. Jack M. Greenberg
Mrs. Marguerite D. Hark
Mary P. Hines^D
Dr. and Mrs. Wayne J. Holman III
Lorraine M. Hurt and George M. Ingram
Marian and Fruman Jacobson
H. Fisk Johnson

Mrs. Noel Kaplan
Anna Marie and Jerry Kelly
Holly L. King
Mr. and Mrs. Keith Kizziah / Malott Family Foundation
Laurie and Rich Kracum
Robert A. Kubicka, MD
Jan Lariviere and Richard^T Lariviere
Gail J. and Robert B.^T Loveman
Marianne Lovink and Julian Siggers^{TE}
Mr.^T and Mrs. John W. McCarter, Jr.
Mr.^T and Mrs. Chris O'Herlihy
Cathy and Bill Osborn
Asutosh Padhi^T and Rita Anand-Padhi
Jo Ann and Joe Paszczyk
Mr. and Mrs. Donald W. Patterson
S & H Fund, a Donor Advised Fund of Renaissance Charitable Foundation
Marilyn L. Schweitzer and Michael A. Firman
Mrs. William L. Searle^D
Harriett Ann Sidoli
Kass F. Sigal
Judith B. Sugarman
Captain Dave M. Truitt

\$5,000 to \$9,999

Anonymous (4)
Jean R. Armour^T
Kara and Thomas Barta
Anne Searle Bent
Susan M. Benton^T
William Betts and Caroline Heylman
Mr.^T and Mrs. Norman R. Bobins / Bobins Family Fund at The Chicago Community Foundation

David Bohan and Kathryn Kemp
Mr. and Mrs. John J. Borland, Jr.
Beth and Scott Brady
Adrienne and Arnold Brookstone
Barb and Nathan Brown
Mr. and Mrs. Andrew W. Brown
Mr. and Mrs. Theodore R. Butz
Ceres Foundation
Mary and Jim Costello
Sir Peter^T and Lady Crane
Daphne and John Cunningham
Tapas K. Das Gupta
Rebecca Davidson
Susan and Mark Dawson
Mr. and Mrs. James M. Denny
Janet W. Diederichs
Thomas R. Doler
Carolyn K. Donaldson and James S. Donaldson
Monica Donath
Glenda W. Duncan
Mignon W. Dupepe and John B. Snyder, Jr.
Eldred-Harland Charitable Fund at The Chicago Community Foundation
Fabio T. Fabbri
Hattie A. and Marie V. Fatz Foundation
Barbara V. Fisher
Judith A. Fitz
Ginny and Peter Foreman
Philip M. Friedmann Family
Mr. & Mrs. Christopher O. Glass
Mr.^T and Mrs.^T James J. Glasser
Donald Grasso

Richard & Mary L. Gray Foundation	Mr. ^T and Mrs. James J. O'Connor, Jr.	Lucinda and David Baier	Katherine T. Donaldson and Ryan B. Whitacre	Mr. and Mrs. John L. Hines	Thomas T. Macejko, Jr. and Amanda Maw Macejko
Jean Greene	Mr. Robert I. Osterberg	Susan and Stephen Baird	The Donnelley Foundation ^T	Peggy L. Hoberg	Sandra and Benjamin Madey
Patricia and William J. Hagenah	Dr. and Mrs. William R. Parkhurst	Mr. and Mrs. Aaron A. Barlow	Jennifer and David Martay	Heidi and Richard Holm	Patricia A. Malloy
Mr. and Mrs. Matthew C. Harris	William and Gail Radzevich	Martha and James Barrett	Thomas E. Durica and Susan Jacob	Mr. and Mrs. Arthur Holzheimer	Sandy and Jerry Manne
Beverly and Warren Hayford	Helen S. Reed	Mary Jo and Doug Basler	Jon Ekdahl and Marcia Opp Ekdahl	George Hrycelak and Sophia Welykyj	Todd Marek and Vana Thayu
Robert Hevey, Jr. and Constance M. Filling	Anita J. Rogers	Verna L. Baughman, MD	Cherelynn A. Elliott	Maria R. Hrycelak, MD	Peter Marks and Dorothy Mackevich Marks
Jeani and Rich Jernstedt	Mr. and Mrs. Robert J. Sanborn	Helene Beisecker and Jean Ann White	Mr. and Mrs. Paul M. Embree	Ying Hsu and Donald R. Monson	Marie A. Marotta
Charles L. Katzenmeyer ^E	Dilara ^T and Yousuf Sayeed	Deborah A. Bekken ^E and Richard G. Kron	La and Philip Engel	Felix Yuansi Huang and Joshua Lau	Jamie C. Marshall and Richard Sobkowiak
Krystyna D. Kiel	Karla Scherer	Mr. and Mrs. Harrington Bischof	Mrs. Jerome L. Ettelson	Laurie Huget and Werner Huget	Mr. and Mrs. Charles R. Matthews
Mr. Brian C. Kocinski and Ms. Genevieve E. Hillis	Mr. and Mrs. Gordon I. Segal / Segal Family Foundation	Shaun and Andy Block	Alexis and Craig Eyler	Mr. and Mrs. Christopher Hurley	Helen McArdle
Martin Jesse Koldyke / Koldyke Family Foundation	Bessie Shields Foundation	Michelle and David Buck	Susan and Alexander Fautot	Jill Hutchison and David Rosholt	Mr. and Mrs. Ronald R. McKee
Patricia A. Kosmerl	Richard M. Skolly and Kate A. Feinstein	Dr. William C. Burger	Mary and Bruce Feay	Irish Woods Foundation	McKee Family Foundation
René and Bruce Lauer	Geoffrey Smith and Catherine Stewart	Edward J. Calkins	Judith Findorff	Steven M. Isaac and Judy L. Olds	Etta and John McKenna
Richard M. Levin ^T and Sally J. McDonald	Tom E. Sourlis	Lindsay W. Carlton	Mr. and Mrs. Peter D. Fischer	Mr. and Mrs. James M. Johnson	Leslie Gantz McLamore and Scott McLamore
Joanne and Richard Levy in honor of Alan Resetar and his life's work	Margie ^T and Kevin ^T Stineman	Guy T. Castino	Mr. and Mrs. Kenneth P. Fischl	Pamela MacVicar Johnson	Carlette C. McMullan and John Gibbons, Jr.
Dr. Benjamin R. Locke	Kevin L. Stoeckel and Emily Heisley Stoeckel	Meg Caswell and Randy Holladay	Martha and James Foght	Robert Bruce Johnson and Ann K. Eldred	Mr. and Mrs. Charles P. McQuaid
The Loewenthal Fund at The Chicago Community Foundation	Mr. and Mrs. John W. Taylor III	Mr. and Mrs. John S. Chapman	William Fotis and Sam Gentile ^D	Lynn and George Jones	Elisabeth C. Meeker
Patricia S. Lucas	Mr. and Mrs. Edgar L. Thayer	Gay-Young Cho and Yu-Lam Christopher Chiu, MD	Deborah and Charles Frank	Linda M. Jung	Withrow W. Meeker
Mr. ^T and Mrs. Scott P. Marks, Jr.	Anne Van Wart and Michael Keable	Mr. and Mrs. Thomas M. Cole	Donna B and Peter B Freeman	Kathleen and Alex Kallend	Pamela L. Miles
Mrs. Donna J. Matson and Mr. Robert W. Carpenter	Mrs. Herbert A. Vance ^D	Mr. and Mrs. George M. Covington	Mr. and Mrs. Joel M. Friedman	Mr. and Mrs. Eric Kauffman	Mr. and Mrs. Robert R. Moeller
William B. McDonald and Pthah Sekhmat Osiris	Rose and Robert Wagner	Bill Cox and Mary Noble	Nika Gloyeske	Mr. and Mrs. Eric Kennedy	Cynthia A. Moody
Kennon P. McKee, PsyD	Stacey E. Weltmer	Mr. and Mrs. Kenneth W. Dam	Donna and Roger Godel	Mr. and Mrs. T. Eric Kilcollin	Lisa and Jerry Moore
Erma S. Medgyesey	William J. White ^T	Dr. and Mrs. Lloyd Davidson	Teresa Kang and John Goerner	Mr. and Mrs. William J. Kirby	Jennifer and Brad Morehead
Mrs. Hugo J. Melvoin	The Abra Wilkin Fund	Karen and Bill Davis	Delta A. Greene	Kathleen and Dennis Klaeser	Mr. and Mrs. John V. Morris
Bryce Minetz	April R. Wilson	Rebecca E. Deaton	Joyce and Timothy Greening	Becky and Lester Knight	Mr. and Mrs. Thomas M. Mulcahy
Moller Family Foundation	Claudia L. Winkler	Carla M. Dehmlow ^D	Katherine L. Griem and Anthony G. Montag Charitable Fund	Dr. and Mrs. Barry Kohl	James H. Niehoff and Jolie R. Macier
Sandra L. Mueller	Melanie R. Wojtulewicz and Tony Crowe	Mr. and Mrs. Robert O. Delaney, Jr.	Mr. ^T and Mrs. Lewis S. Gruber	Mr. and Mrs. Robert R. Kunkler	Jennifer and Craig Niemann
Mr. ^T and Mrs. Leo F. Mullin	Mr. and Mrs. Kenneth J. Yager	The DeThorne Family ^E	Tonja Rizai Hall	Dr. Mary Lawlor and Dr. John Kallend	Christina J. Norton and John A. Biek
Alexandra C. and John D. Nichols	\$2,500 to \$4,999	Owen Deutsch and Rona Talcott	Mr. and Mrs. Dean M. Harrison	Wende Fox Lawson and Jim Lawson	Mark A. Oates and Family
Mary Jane Nordlund	Anonymous (5)	Mr. and Mrs. James W. DeYoung	Dr. Malcolm H. Hast	Little Lion	Virginia A. O'Neill
	Mary Claire and Doug Allvine	Mr. and Mrs. Byram E. Dickes	Mr. and Mrs. J. Duncan Healy	Mr. and Mrs. Jordan Lowe	Donna L. Owens
	The Allyn Foundation	Daniel Diermeier ^T and Ariela Lazar	Dawn and Ted Helwig	Lawrence and Ilene Lubell	The Richard Laurence Parish Foundation
	Birute J. Apke	Richard and Janice Domanik	Mr. and Mrs. Patrick J. Herbert III		
	Rodney Austin		Kimberlee S. Herold		
			Mr. and Mrs. C. Clarkson Hine		

Michelle and Tony Pashos
Shauna Peet
Roxelyn M. and Richard S.^D Pepper
Mr. and Mrs. Robert P. Perkaus, Jr.
Lorraine and Norman Perman
Beverly and Stephen Pinaire
Judith and Charles Pitman
Mr. and Mrs. Charles S. Potter, Jr.
Mr. and Mrs. Paul C. Poy
Irwin Press and Andra Press
Mr. and Mrs. Shelby Pruett
Mr. and Mrs. John W. Puth
Jacqueline L. Quern
James A. Radtke and Susan A. Kressin
Ginevra^E and Ben Ranney
Ringer Family Foundation
Mr. and Mrs. Steven A. Rosen
Robert A. Rosholt and Sharon L. Brunelle
Mr. and Mrs. Jeffrey S. Ross
Susan B. Rubnitz
Charles Ruedebusch and Linda Flack
Ryan Ruskin^T and Michael Andrews
Mr. and Mrs. John W. Rutledge
Tina and Buzz Ruttenberg
Mr. and Mrs. Patrick G. Ryan
John Salvino
Sargent Family Foundation
Barbara M. Schleck and Gary M. Ropski
Mr. and Mrs. Richard H. Schnadig
Karen and Frank Schneider
Barbara and Thomas Schnitzer
Suzanne and Ken Schulte
Richard and Barbara Schultz

Susan and Alan Sebulsky
Mr. and Mrs. Richard J. L. Senior
Mrs. Monica Sentoff
Mr. and Mrs. Jeffrey S. Sharp
Sally Sharp
Charlene and Bob Shaw
Mr. and Mrs. Neil J. Sheehan
Pam and Tom Sheffield / JS Charitable Trust
Toni Sandor Smith
Elizabeth L. Snyder
The Sparacio Family
Mr. and Mrs. Neele E. Stearns, Jr.
Liz Stiffel
Lars Stole and Audris Wong
Mrs. Francis H. Straus II
Ivan G. Strauss
Steven Strohmeier^E and Josie Brown
Mary and Harvey Struthers
The Sullivan Family Charitable Trust
Arthur Susman and Carole Stone
Mr. and Mrs. Robert N. Szalay
Mr.^T and Mrs. David M. Tolmie
Margaret Tomaszek-Witry and Lawrence Witry
Anita and Thomas Veldman
Mr. and Mrs. John R. Walter
Mr. and Mrs. Douglas H. Walter
Dilnaz and Qaiser Waraich
Everett S. Ward^T and Iris K. Sims
Paul Waters and Nancy Bugajski
Carrie and Jay Weaver
Michael and Christine Weis
Mr. and Mrs. William E. Wolf
Mr. and Mrs. Robert Zentner

2020 Combined Contributions

We acknowledge donors for their support of several Field Museum initiatives.

\$1,000,000+

Anonymous
Linda and Wilbur^T Gantz
The Grainger Foundation
Hamill Family Foundation / Nancy Hamill Winter^T
Lilly Endowment Inc.
National Science Foundation
The Negaunee Foundation
Jessica^T and Steve Sarowitz
State of Illinois Department of Natural Resources

\$500,000 to \$999,999

Anonymous
Karen Z. Gray-Krehbiel^T and John H. Krehbiel, Jr.
Connie^T and Dennis Keller
Robert R. McCormick Foundation
Gordon and Betty Moore Foundation
National Aeronautics and Space Administration
Searle Funds at The Chicago Community Trust

\$100,000 to \$499,999

Anonymous (2)
AbbVie
Aon
ArcelorMittal
Konrad J. Banaszak and S. Jennifer Sugarman
The Barker Welfare Foundation

BMO Harris
Bobolink Foundation
Jacolyn and John^T Bucksbaum
Rita and John^T Canning
Dr.^T and Mrs. Richard A. Chaifetz
ComPsych Corporation
Winnie and Bob^T Crawford
D & R Fund / Glasser^T and Rosenthal Families
Sandy^T & Roger^T Deromedi
Discover
Efroymson Family Fund^T
Mr.^T and Mrs.^D Marshall Field V
Lori and Michael^T Flannery
Sue Ling Gin Foundation Trust
The Hearst Foundations
Institute of Museum and Library Services
Edward C. Jerkey^D
JPMorgan Chase & Co.
Jamee Field Kane^T / The Edith B. and Lee V. Jacobs Fund No. 1
Lindy and Mike^T Keiser
Robert E. King and Emily H King
Fay and Daniel Levin
Diane v. S.^T and Robert M. Levy
John D. and Catherine T. MacArthur Foundation
Chauncey and Marion D. McCormick Family Foundation
Swati and Bobby^T Mehta
Sue and David Milligan
National Endowment for the Humanities
Mr.^T and Mrs. Michael O'Grady

Irma Parker^D
Joan and Paul Rubschlager
Cari and Michael Sacks / GCM Grosvenor
Mr. and Mrs.^T Michael D. Searle
Jai Shekhawat^T
Michael Tang^T
Tawani Foundation
Jeannie and Thomas Tisbo
Walder Foundation
Barbara H. West^D
Mr.^T and Mrs. W. Rockwell Wirtz

\$50,000 to \$99,999

Anonymous (4)
Abbott
Paul M. Angell Family Foundation
Susan and Stephen Baird
The Brinson Foundation
Roger O. Brown^D
The Crown Family
Ernst & Young LLP
Colette Evans and John Rau^T
Exelon
Julius N. Frankel Foundation
Marshall B. Front Family Charitable Foundation / Laura De Ferrari and Marshall B. Front^T
GCM Grosvenor
Christina & Ronald Gidwitz Charitable Foundation
Mr.^T and Mrs.^T Jack M. Greenberg
Harris Family Fund of The New York Community Trust
David D. Hiller^T
Pamela K. Hull^T
ITW
Mr.^T and Mrs. Richard L. Keyser
The Knowles Foundation
William C. Kunkler III^T and Susan Crown
Gail J. and Robert B.^T Loveman
Margaret B. MacLean^T
Mr.^T and Mrs. John W. McCarter, Jr.
Elizabeth Morse Genius Charitable Trust
Nicor Gas
Karen A. Nordquist
Northern Trust
Kenneth W. O'Keefe^T and Jason Eric Stephens
Cathy and Bill Osborn
Mr.^T and Mrs. John F. Podjasek III
Polk Bros. Foundation
Alicia and Peter^T Pond
Betty D. Prout^D
The Regenstein Foundation
Adele S. Simmons^T
Dawn L.^T and David J. Solomon
Cia and Tom^T Souleles
John G. Symons Trust Charities Fund/Marshall B. Front^T and Case Hoogendoorn, Co-Trustees
Robin and Mark^T Tebbe
Family and Friends of Hsi-Tsin Ma Tsiang / The Hsi-Tsin Ma Tsiang Fund
U.S. Bank
United Airlines
Kimbra and Mark^T Walter
Elie Weaver^T and Hilton Weinberg
Jason Wortendyke^T and Ariel Knowles Wortendyke

\$25,000 to \$49,999

Anonymous
 Anu and Arjun^T Aggarwal
 Bob Arthur^T and Susan Anderson
 Bank of America
 The Robert and Isabelle Bass Foundation, Inc.
 Judy and Howard^T Bernick
 Amy E. Best^T
 Judith S. Block^T
 Mr.^T and Mrs. Norman R. Bobins / Bobins Family Fund at The Chicago Community Foundation
 Olivia and Matthew Brzostowski
 Butler Family Foundation
 Lindsay W. Carlton
 Greg^T and Mamie Case Charitable Fund
 Elizabeth F. Cheney Foundation
 Chicago Blackhawks Foundation
 Citadel
 Mr. and Mrs. James J. Conrad
 Crown Family Philanthropies
 Marsha Cruzan^T and Thomas McGinnis
 Melissa and Oscar^T David
 The Duchossois Family Foundation
 Dr. and Mrs. Eugene F. Fama
 Mary and Bruce Feay
 Federal Signal
 Evelyn Frank
 Mr. and Mrs. Lloyd Gerry
 Mr. and Mrs. Camillo Ghiron
 Ellis Goodman Family Foundation
 Judy^T and Bill Greffin

John R. Halligan Charitable Fund
 Mr. and Mrs.^T King W. Harris / Harris Family Foundation
 Stephanie C. Harris / The Edith B. and Lee V. Jacobs Fund No. 2
 Colette and Wayne^T Hedien
 Jeff^T and Molly Keller
 Shannon Kennedy^T
 Mr.^D and Mrs. Fred A. Krehbiel
 The Loewenberg Charitable Foundation
 Loyola University Chicago
 MacLean-Fogg Company
 Magellan Corporation
 Clare Muñana
 Robert S. Murley
 Mr.^T and Mrs. Neil S. Novich
 Ortiz Builders Inc., MBE
 Joe Ortiz and Ana Justice
 Asutosh Padhi^T and Rita Anand-Padhi
 Peoples Gas
 Pepsi Beverages Company
 Prince Charitable Trusts
 Mr. and Mrs. Shelby Pruett
 Jeanne M. and John W.^T Rowe
 Mr. and Mrs. Patrick G. Ryan
 Michael E. Severino, MD^T
 Jennifer L. Sherman^T
 Julie and Matthew K.^T Simon
 Mr.^T and Mrs. Jud Snyder
 Barbara A. Speer
 Mr. and Mrs. Neele E. Stearns, Jr.
 Suncast Corporation
 Mrs. Herbert A. Vance^D
 Lori and Marcus^T von Kapff
 Walgreens
 Mr. and Mrs. John R. Walter

The A. Montgomery Ward Foundation, Bank of America, N.A., Co-Trustee
 William A. Wedgworth^D
 Miles D. White^T
 David E. Willard
 Melvin D. Williams
 Mr.^T and Mrs. Patrick B. Wood-Prince
\$10,000 to \$24,999
 Anonymous (6)
 Aileen S. Andrew Foundation
 Aramark
 Archer Daniels Midland Company
 Barn Road Foundation
 Mary Jo and Doug Basler
 Baxter International Inc.
 Shannon and Larry Bell
 Susan M. Benton^T
 Bloomberg Philanthropies
 T. Kimball Brooker
 The Buchanan Family Foundation
 Rosemarie and Dean L. Buntrock
 Linda and Vincent Buonanno
 Carol and Tom Butler
 Dianne and Thomas Campbell
 Joyce E. Chelberg
 Ricardo Chimal, Jr.
 The Comer Foundation Fund
 Cecilia and Froilan Concepcion
 A. G. Cox Charity Trust
 Mark Crane
 Mr.^T and Mrs. Kermit R. Crawford
 Credit Suisse
 Laura and Dave Davis

Mr. and Mrs. Byram E. Dicks
 Gaylord and Dorothy Donnelley Foundation
 Shawn M. Donnelley and Christopher M. Kelly
 Mr. and Mrs. Robert Feitler
 The Field Foundation of Illinois
 The Foland^T Family
 The Robert E. Gallagher Charitable Trust
 Mr. and Mrs. Christopher O. Glass
 Alice and Richard Godfrey
 W.W. Grainger, Inc.
 Sally Mead Hands Foundation
 Marguerite D. Hark
 Robert Hevey, Jr. and Constance M. Filling
 Mary P. Hines^D
 Hoellen Family Foundation
 Dr. and Mrs. Wayne J. Holman III
 Lorraine M. Hurt and George M. Ingram
 Marian and Fruman Jacobson
 H. Fisk Johnson
 Mrs. Noel Kaplan
 Anna Marie and Jerry Kelly
 Holly L. King
 Mr. and Mrs. Keith Kizziah / Malott Family Foundation
 Kathleen and Dennis Klaeser
 Mr. and Mrs. Adam Klauber
 Laurie and Rich Kracum
 Robert A. Kubicka, MD
 Jan Lariviere and Richard W.^T Lariviere
 Michael A. Leppen / Miriam U. Hoover Foundation
 Marianne Lovink and Julian Siggers^{TE}

The Maxwell / Hanrahan Foundation
 McKinsey & Company
 Molex Incorporated
 Morgan Stanley
 Peggy L. Morrow^D
 Mr. and Mrs. Thomas M. Mulcahy
 National Park Service
 Mr.^T and Mrs. Chris O'Herlihy
 Alice and Charles Palmer
 Jo Ann and Joe Paszczyk
 Mr. and Mrs. Donald W. Patterson
 PepsiCo, Inc.
 PNC
 S & H Fund, a Donor Advised Fund of Renaissance Charitable Foundation
 S&C Electric Company
 Dilara^T and Yousuf Sayeed
 Mrs. John Schlossman
 Mr. and Mrs. Richard H. Schnadig
 Marilyn L. Schweitzer and Michael A. Firman
 Mrs. William L. Searle^D
 Pam and Tom Sheffield / JS Charitable Trust
 Harriett Ann Sidoli
 Kass F. Sigal
 The Siragusa Family Foundation
 The Smart Family Foundation
 Solberg Manufacturing, Inc.
 Judith B. Sugarman
 Tave Risk Management
 Mr. and Mrs. John W. Taylor III
 Captain Dave M. Truitt
 The Warwick Foundation
 The Abra Wilkin Fund
 William Blair & Company

Wintrust Financial Corp.
 Ann S. Wolff^D
 Sharon N. Wright

\$5,000 to \$9,999

Anonymous (5)
 Jean R. Armour^T
 Kara and Thomas Barta
 Verna L. Baughman, MD
 Anne Searle Bent
 William Betts and Caroline Heylman
 Mr. and Mrs. Harrington Bischof
 Mr. and Mrs. Philip D. Block IV
 David Bohan and Kathryn Kemp
 Mr. and Mrs. John J. Borland, Jr.
 Beth and Scott Brady
 Adrienne and Arnold Brookstone
 Barb and Nathan Brown
 Mr. and Mrs. Andrew W. Brown
 Mr. and Mrs. Theodore R. Butz
 Ceres Foundation
 Mary and Jim Costello
 Sir Peter^T and Lady Crane
 Daphne and John Cunningham
 Tapas K. Das Gupta
 Rebecca Davidson
 Susan and Mark Dawson
 Cheryl and Michael Del Campo
 Mr. and Mrs. James M. Denny
 Janet W. Diederichs
 Thomas R. Doler
 Carolyn K. and James S. Donaldson

HONOR ROLL

Monica Donath
The Donnelley^T Foundation
Glenda W. Duncan
Mignon W. Dupepe and
John B. Snyder, Jr.
Eldred-Harland Charitable
Fund at The Chicago
Community Foundation
Susan Eleuterio
Alexis and Craig Eyler
Fabio T. Fabbri
Hattie A. and Marie V.
Fatz Foundation
Mr. and Mrs. Alexander H.
Faurot
Fellowes Brands
Barbara V. Fisher
Judith A. Fitz
Ginny and Peter Foreman
Philip M. Friedmann Family
Mr.^T and Mrs.^T James J.
Glasser
Mr. and Mrs. James P. Gorter
Donald Grasso
Richard & Mary L. Gray
Foundation
Jean Greene
Patricia and William J.
Hagenah
Tonja Rizai Hall
Mr. and Mrs. Matthew C.
Harris
Dorothy Harza
Beverly and Warren Hayford
Mr. and Mrs. Patrick J.
Herbert III
Ingredion Incorporated
Jeani and Rich Jernstedt
Charles L. Katzenmeyer^E
Mr. and Mrs. Eric Kauffman
Krystyna D. Kiel

Brian C. Kocinski and
Genevieve E. Hillis
Martin Jesse Koldyke /
Koldyke Family Foundation
Patricia A. Kosmerl
René and Bruce Lauer
Richard M. Levin^T and
Sally J. McDonald
Joanne and Richard Levy
in honor of Alan Resetar
and his life's work
Mr. and Mrs. Robert Linn
Benjamin R. Locke, PhD
The Loewenthal Fund at
The Chicago
Community Foundation
Patricia S. Lucas
Mr. and Mrs.^D John W.
Madigan
Patricia A. Malloy
Mr.^T and Mrs. Scott P. Marks, Jr.
Donna J. Matson and
Robert W. Carpenter
William B. McDonald and
Ptah Sekhmat Osiris
Kennon P. McKee, PsyD
Leslie Gantz McLamore
and Scott McLamore
Erma S. Medgyes
Elisabeth C. Meeker
Mrs. Hugo J. Melvoin
Bryce Minetz
Moller Family Foundation
Sandra L. Mueller
Mr.^T and Mrs. Leo F. Mullin
National Oceanic and
Atmospheric Administration
Alexandra C. and
John D. Nichols
Mary Jane Nordlund
Mr. Robert I. Osterberg
Dr. and Mrs. William R.
Parkhurst

Beverly and Stephen Pinaire
The George and Mary Rabb
Fund for Conservation
William and Gail Radzevich
Helen S. Reed
Anita J. Rogers
Mr. and Mrs. John W.
Rutledge
S&P Global
Mr. and Mrs. Robert J.
Sanborn
Karla Scherer
Carol H. Schneider
Mr. and Mrs. Gordon I. Segal /
Segal Family Foundation
Charles & M.R. Shapiro
Foundation, Inc.
Mr. and Mrs. Jeffrey S. Sharp
Charlene and Bob Shaw
Bessie Shields Foundation
Richard M. Skolly and
Kate A. Feinstein
Geoffrey Smith and
Catherine Stewart
Margie^T and Kevin^T Stineman
Kevin L. Stoeckel and
Emily Heisley Stoeckel
Sulzer Family Foundation
Mr. and Mrs. Edgar L. Thayer
Mr.^T and Mrs. David M. Tolmie
Anne Van Wart and
Michael Keable
Rose and Robert Wagner
Stacey E. Weltmer
Dorothy B. White^D
William J. White^T
April R. Wilson
Claudia L. Winkler
Melanie R. Wojtulewicz
and Tony Crowe
Mr. and Mrs. Kenneth J. Yager

\$2,500 to \$4,999

Anonymous (6)
Charles Adams Nature
Research Foundation
Mary Claire and Doug Allvine
The Allyn Foundation
Birute J. Apke
Rodney Austin
Lucinda and David Baier
Lorraine and Randy Barba
Mr. and Mrs. Aaron A. Barlow
Martha and James Barrett
Mr. and Mrs. Philip S. Beck
Helene Beisecker and
Jean Ann White
Deborah A. Bekken^E
and Richard G. Kron
Margaret S. and Philip D.
Block, Jr. Family Foundation
Shaun and Andy Block
Hyacinth and Le Monte G.^E
Booker, Sr.
Michelle and David Buck
Rosemarie and Dean L.
Buntrock Foundation
William C. Burger, PhD
Edward J. Calkins
Guy T. Castino
Meg Caswell and Randy
Holladay
Mr. and Mrs. John S.
Chapman
Gay-Young Cho and Yu-Lam
Christopher Chiu, MD
Mr. and Mrs. Thomas M. Cole
Mr. and Mrs. George M.
Covington
Bill Cox and Mary Noble
Mr. and Mrs. Kenneth W. Dam
Dr. and Mrs. Lloyd Davidson
Karen and Bill Davis
Rebecca E. Deaton

Carla M. Dehmlow^D
Mr. and Mrs. Robert O.
Delaney, Jr.
The DeThorne Family^E
Owen Deutsch and
Rona Talcott
Mr. and Mrs. James W.
DeYoung
Daniel Diermeier^T
and Ariela Lazar
Richard and Janice Domanik
Katherine T. Donaldson
and Ryan B. Whitacre
Thomas E. Durica
and Susan Jacob
Jon Ekdahl and Marcia
Opp Ekdahl
Cherelynn A. Elliott
Mr. and Mrs. Paul M. Embree
La and Philip Engel
Mrs. Jerome L. Ettelson
Mr. and Mrs. William F. Farley
Judith Findorff
Mr. and Mrs. Peter D. Fischer
Mr. and Mrs. Kenneth P. Fischl
Martha and James Foght
William Fotis and Sam
Gentile^D
Deborah and Charles Frank
Donna B. and Peter B.
Freeman
Mr. and Mrs. Joel M. Friedman
Nika Gloyeske
Donna and Roger Godel
Stanford and Ann Dudley
Goldblatt
Delta A. Greene
Joyce and Timothy Greening
Katherine L. Griem and
Anthony G. Montag
Charitable Fund
Mr.^T and Mrs. Lewis S. Gruber

Irving Harris Foundation
Mattie H. Harris
Mr. and Mrs. Dean M.
Harrison
Malcolm H. Hast
Mr. and Mrs. J. Duncan Healy
Dawn and Ted Helwig
Kimberlee S. Herold
Mr. and Mrs. C. Clarkson Hine
Mr. and Mrs. John L. Hines
Peggy L. Hoberg
Heidi and Richard Holm
Mr. and Mrs. Arthur
Holzheimer
George Hrycelak and
Sophia Welykyj
Maria R. Hrycelak, MD
Ying Hsu and Donald R.
Monson
Laurie Huget and
Werner Huget
Mr. and Mrs. Christopher
Hurley
Jill Hutchison and
David Rosholt
Mrs. Robert C. Hyndman
Mr. and Mrs. Andrew M.
Jessen
Mr. and Mrs. James M.
Johnson
Jennifer and Russ Johnson
Pamela MacVicar Johnson
Robert Bruce Johnson
and Ann K. Eldred
Lynn and George Jones
Linda M. Jung
Kathleen and Alex Kallend
Teresa Kang and John
Goerner
Mr. and Mrs. Eric Kennedy
Mr. and Mrs. T. Eric Kilcollin
Mr. and Mrs. William J. Kirby



2020 Parker/Gentry Award

The Museum presented its 2020 Parker/Gentry Award to Amazon explorer and researcher Michael Goulding, PhD. Established in 1996, the Parker/Gentry Award honors an outstanding individual, team, or organization whose efforts have had a significant impact on preserving the world's natural heritage and whose approach can serve as a model to others. Dr. Goulding, an aquatic ecologist with the Wildlife Conservation Society, has shifted our largely terrestrial view of Amazonian conservation, foregrounding the region's rivers and their biodiversity. His efforts have inspired a generation of Amazon scientists and conservationists. His work was celebrated in a virtual award ceremony and featured, along with the work of the Keller Science Action Center, in *The Ese'Eja People of the Amazon* exhibition that opened at the Museum in September.

(Left) Dr. Goulding's fieldwork advances his long-term goal "to develop an ecosystem vision from the Andes to the Atlantic, for the conservation of biodiversity and for human well-being."

Becky and Lester Knight	Jennifer and David Martay	Jennifer and Craig Niemann	Mr. and Mrs. John W. Puth	Karen and Frank Schneider	The Sullivan Family
Dr. and Mrs. Barry Kohl	Mr. and Mrs. Charles R. Matthews	Christina J. Norton and John A. Biek	Jacqueline L. Quern	Barbara and Thomas Schnitzer	Charitable Trust
Mr. and Mrs. Robert R. Kunkler	Helen McArdle	Mr. and Mrs. James J. O'Connor, Jr.	James A. Radtke and Susan A. Kressin	Suzanne and Ken Schulte	Arthur Susman and Carole Stone
The William W. & Pamela C. Lane Foundation	Mr. and Mrs. Ronald R. McKee	Old Republic International Corporation	Ginevra ^E and Ben Ranney	Richard and Barbara Schultz	Mr. and Mrs. Robert N. Szalay
Mary Lawlor and John Kallend	McKee Family Foundation	Virginia A. O'Neill	Jack Ringer Family Foundation	Susan and Alan Sebulsky	Margaret Tomaszek-Witry and Lawrence Witry
Wende Fox Lawson and Jim Lawson	Etta and John McKenna	Donna L. Owens	Ringer Family Foundation	Mr. and Mrs. Richard J. L. Senior / The Morgan Senior Foundation	Anita and Thomas Veldman
Little Lion	Carlette C. McMullan and John Gibbons, Jr.	The Richard Laurence Parish Foundation	Dana Sodikoff Ringer and Jacob Ringer	Mrs. Monica Sentoff	Mr. and Mrs. Douglas H. Walter
Mr. and Mrs. Jordan Lowe	Mr. and Mrs. Charles P. McQuaid	Michelle and Tony Pashos	Mr. and Mrs. Steven A. Rosen	Sally Sharp	Dilnaz and Qaiser Waraich
Ilene and Lawrence Lubell	Withrow W. Meeker	Shauna Peet	Robert A. Rosholt and Sharon L. Brunelle	Mr. and Mrs. Neil J. Sheehan	Everett S. Ward ^T and Iris K. Sims
Thomas T. Macejko, Jr. and Amanda Maw Macejko	Pamela L. Miles	Roxelyn M. and Richard S. ^D Pepper	Mr. and Mrs. Jeffrey S. Ross	Toni Sandor Smith	Paul Waters and Nancy Bugajski
Sandra and Benjamin Madey	Mr. and Mrs. Robert R. Moeller	Mr. and Mrs. Robert P. Perkaus, Jr.	Susan B. Rubnitz	Elizabeth L. Snyder	Carrie and Jay Weaver
Sandy and Jerry Manne	Cynthia A. Moody	Lorraine and Norman Perman	Charles Ruedebusch and Linda Flack	The Sparacio Family	Michael and Christine Weis
Todd Marek and Vana Thayu	Lisa and Jerry Moore	Judith and Charles Pitman	Ryan Ruskin ^T and Michael Andrews	Liz Stiffel	Lynda W. Williams, PhD and Norman J. Williams
Peter Marks and Dorothy Mackevich Marks	Jennifer and Brad Morehead	Mr. and Mrs. Charles S. Potter, Jr.	Tina and Buzz Ruttenberg	Lars Stole and Audris Wong	Mr. and Mrs. William E. Wolf
Marie A. Marotta	Mr. and Mrs. John V. Morris	Mr. and Mrs. Paul C. Poy	John Salvino	Mrs. Francis H. Straus II	Irish Woods Foundation
Jamie C. Marshall and Richard Sobkowiak	Dr. and Mrs. Walter B. Newsom	Irwin Press and Andra Press	Sargent Family Foundation	Ivan G. Strauss	Felix Yuansi Huang and Joshua Lau
	James H. Niehoff and Jolie R. Macier		Barbara M. Schleck and Gary M. Ropski	Steven Strohmeier ^E and Josie Brown	Mr. and Mrs. Robert Zentner
				Mary and Harvey Struthers	
				Mr. and Mrs. Brian R. Sullivan	

HONOR ROLL

\$1,000 to \$2,499

Anonymous (17)

The Achnacarry Foundation /
Lenore and Douglas
Cameron

Barbara and Steven Adelman

Eva Adler and Lorica Adler

Joseph O. Alford

AMSTED Industries

Miah and Vernon Armour

Richard Assmus and
Leah Welty Assmus

Margaret B. and
Harry Axelrod
Charitable Trust

Laura Bader and Victor Sturm

Marguerite and
Christopher Baran

Kate M. Barnash

Alben F. & Clara G.
Bates Foundation

Joyce and Frank Bauer

Bay City Capital Foundation

Elizabeth Anne Beal
and Neil Stempel

Mr. and Mrs. Ronald J.
Benedict

Betty Bergstrom and
Gerald Talsky

Yee Man and Lars Bergstrom

Sarah Bermingham
and Bill Connor

The Birck Family Fund

Peggy and Paul Bodine

The Boeing Company

Peter Bowe and
Barbara Stewart

Keith D. Bowersox

Mr. and Mrs. Bruce W. Boyd

Thomas E. Brean

Donna and Andrew Brickman
Steven U. Brint

K. Brooke and Jean-
Claude Brizard^T

Judy and John^D Bross

Sophia Bross

Beth and Samuel Buchsbaum
Walter and Mary Carr

Erica and Joshua Carter

Mr. and Mrs. M. Blouke Carus

Casden Family

Michele Chaffee and
Adam Nordin

Nathaniel Purdy Clapp

Mary Sue Coates

Sharon P. Cole

Judy and John Coletta

Joan M. Colmar

James W. Compton^T

Kristine Anderson Coonan

Jenny Lynd Corley

Mr. and Mrs. Patrick Corrigan

Kevin Coughlin and
Sue Burzawa

Pamela and Edward Coughlin

Charles F. Custer

Nancy Dehmlow and
Cameron Dehmlow Dunne

Amy T. Dickinson and
Jim Futransky

Dr. and Mrs. John R. Dimar II

Naomi S. Donnelley
and Joseph Butler

Mark Donnelly

Helen Dunlap

Mr. and Mrs. Timothy K. Earle

Mr. and Mrs. Phillip L. Elbert

J. Thomas Eller

The Donald Ephraim
Family Foundation

David Fenter

Anthony K. Fisher and
Barbra Richardson

Sally Fletcher

Forest Preserve District,
Cook County

Adrian R. Foster

Mr. and Mrs. Earl J. Frederick

Joanne Benazzi Friedland

Sylvia E. Furner

Dr. and Mrs. Robert M.
Galatzer-Levy

Pamela Geyer and
John Mehegan

Gretchen M. Gillis and
Dr. David R. Cook

Julie and Greg Goff

Walter and Karla
Goldschmidt Foundation

Mr. and Mrs. Daniel R.
Greenberg

Dr. and Mrs. Daniel Grossman

Anastasia Gutting

Suzanne M. Gylfe

Dr. and Mrs. Christopher
Hagenah

Mr. and Mrs. John A. Hagenah

Esther R. Hankin

Dayan and Steve Harlamert

Trish and Harp Harper

Barbara J. Hebda

Hefren-Tillotson, Inc.

Carolynne and Scott
Hertenstein

Connie and Bob Hickey

Mr. and Mrs. Richard C.
Hoffman, Jr.

Sandra N. Hoffman

Mr. and Mrs. Fred Holubow

Janice L. Honigberg

Diane and Thomas Hope

Mary Curtis Horowitz

CJ Hughes

Susan and Tex Hull



EVOLVE 2020: Monster Masquerade

Following the Gala on October 17, Field Associates, the Museum's young professionals group, hosted its annual event—EVOLVE—virtually. It featured a presentation from Associate Curator of Fossil Reptiles Jingmai O'Connor, who shared experiences from her research in China. Performers from Second City joined the event and invited audience members to participate in interactive improv. The evening concluded with Anthropology Chair Ryan Williams presenting a history of beer followed by a presentation on the science of brewing with brewmaster Dan Whitely. Through ticket sales, sponsorship and a silent auction, EVOLVE raised more than \$50,000 in support of the Field Museum.

Patricia J. Hurley	The Louise and Elizabeth Manke Foundation / Irene C. Manke	Stephanie and Bernhard Ortel	Mr. and Mrs. Jonathan F. Shaver	Mr. and Mrs. Jack Van Orden	Becky and Andy Anderson
Elizabeth and Craig Hutson			Mr. and Mrs. Andrew H. Shaw	Ryan VanHolsbeke	Mr. and Mrs. Craig A. Anderson
Steven M. Isaac and Judy L. Olds	Michelle L. Maton and Michael C. Schaeffer	Mr. and Mrs. Lawrence A. Osterberg	Kate M. Sheehy	Katherine M. Vennetti	Laura Ferris Anderson and Matthew Anderson
Mr. and Mrs. Jeffrey W. Jackson	Susan and John McBride	Ronna J. Page	Shure Incorporated	Kathleen D. Vogt	
Carolyn and Paul Jarvis	Bess-Catherine and James McCord	Helene and Aaron Paris	Sidley Austin LLP	Nancy L. Wald ^D	Linda Anderson
Judy Johanson	Timothy McCutcheon	Patagonia	Louis and Nellie Sieg Fund	Austin J. Waldron	Susan Anderson-Nelson and Jeffrey Nelson
Renee and George Johnson	Deanne and John McLean	Mr. and Mrs. Jerry K. Pearlman	Lisa Siegel-Zagorin and Brian Lischalk	Ann Wasoff	Kenneth A. Angielczyk, PhD ^E
JPMorgan Chase Foundation	Merrick Family Foundation	Aurie A. Pennick, Esq. ^T	Dolores Silverman	Ernest P. Waud III	Caesar F. Armenta
Carrie and Timothy Kamp	Anne L. Metcalf	Dr. and Mrs. Ray J. Pensinger	Robert J. Siracusano	Julia A. Weertman and Nic Zerebny	Mr. and Mrs. William E. Bach
Anne Kavanagh	Eleanor Bingham Miller	Bonnie S. Peters	Maureen M. Slavin	Megan and William Weiland	Richard P. Bail and Janice G. Bail
Marisa and Tom Kay	Mr. and Mrs. Carl E. Moore, Jr.	Mr. and Mrs. Craig A. Pickenpaugh	Mr. and Mrs. Reuben E. Slone	Jane Frances Wells and Burton C. Ferrini	Joy L. Bailey
Melissa and Dennis Kelly	Mr. and Mrs. Michael R. Moran	Mr. and Mrs. Michael Prapuolenis	Mr. and Mrs. Randy Smith	Mrs. Henry P. Wheeler	Carlo Basile and Kim Basile
Heidi Kiesler	Mary K. Moreland and Daniel T. Jenks	Nancy and Warren Rasmussen	Christina and Robert Smolen	Karen White	Dr. and Mrs. Robert A. Beatty
Mitchell B. Kiesler	Naomi Morris	Mrs. Clyde W. Reighard	Mr. and Mrs. Charles H. Solberg, Jr.	Bennie E. Whiten, Jr. and Susan E. Spote	Elana Beckerman and Keith Solomon
Patricia and Robert Kilinskis	Harold M. and Adeline S. Morrison Family Foundation	Richard W. Richardson and Heather Archer	Mr. and Mrs. Jeffrey Sommer	James L. Wilson and Pamela Diane Toler	Donovan Beech
Mr. and Mrs. Norman A. Koglin	Helga E. Muench	Roberts Family Foundation	Mr. and Mrs. Scott E. Sommer	Joseph Wolnski and Jane Christino	Michael Beem
Mr. and Mrs. Robert D. Kolar	Christine Mulshine	Mr. and Mrs. Donald E. Rocap	The Stebbins Fund, Inc.	Nancy G. Wulfers	Mr. and Mrs. Donald A. Belgrad
Stanley L. Korwin and Nancy J. Hall	Jeanette and James Murphy	Mr. and Mrs. Richard M. Rosenberg	Ann Marie Stephenson	Elizabeth Yntema and Mark Ferguson	Wayne B. Bennett
Mr. and Mrs. Lee V. Kremer	Margaret A. Myers and Ronald J. Krumm	Mr. and Mrs. Robert J. Ross	Denise Stewart and George Engeln	Kenneth A. Youga and Anita Jean	Mr. and Mrs. Robert Bernot
Sherri and Michael Leahy	Mrs. Kenneth Nebenzahl	Judith F. and Thomas D. Rutherford	The Stirling Charitable Fund / Mr. and Mrs. James P. Stirling	Janice C. Young	Suzanne and William Bible
Anita Lees and Lisa Lees	Mr. and Mrs. Jonathan B. Newcomb	Sahara Enterprises, Inc.	Mr. and Mrs. Louis C. Sudler, Jr.	Mr. and Mrs. Phillip C. Zarcone	John Bistolfo
Jorge M. Leon ^T	Mary C. Niehaus and Sanjeev Pandey	Cynthia Scalzo and Henry Brown	Patricia S. Sullivan	Zigterman Family Trust	Mr. and Mrs. Todd Blake
Mr. and Mrs. Alan E. Lerner	Leslie and Richard North	Ann and Thomas Schultz	Wayne N. Svoboda	Mark H. Zornow	Kristin and Jay Scott Bleecker
Mr. and Mrs. Donald J. Lewis	The Gerald Norton Foundation	Marilyn C. and Stephen A. Scott	Donald Tanis and Kristine M. Brandel		Jan Blok and Laura Melcher
Datin Tan Fui Lian and Dato Dr. Robert F. Inger ^D	Mark A. Oates & Family	Francine Scully-Lippitz and Herbert Lippitz	Mr. and Mrs. Gregory T. Taylor	\$500 to \$999	Kathleen M. Boege
Sharon and Bob Lindgren	Mr. ^T and Mrs. James J. O'Connor, Sr.	Geri and Paul Seidenstricker	Mitch Theys	Anonymous (12)	James A. Brainer
Paul Littlejohn	Katherine L. Olson	Leticia R. Setrini-Best and Ian P. Best	Jacqueline and Glenn Tilton	Dora and John Aalbrektse	Mr. and Mrs. Robert B. Breisblatt
Jonathan W. Littman, MD and Audrey Lynne Strode	W.J. O'Neil Chicago LLC	Margaret J. and Glenn Curtiss Shaffer	Dr. and Mrs. Michael M. Todd	Martins Adeoye	Linda and Michael Bresolin
Mr. and Mrs. Mark A. Livengood	Jean and Bill O'Neill	Tracey Shafroth	Dr. Alysia and Mr. Daniel Townsend	DeAnne and Al Aguirre	Laural Briggs and Tim Scale
Renée Logan	Kathleen E. O'Rourke		Howard J. Trienens	Mrs. John J. Ahearne	Sara and Patrick Broaders
Sherry and Melvin Lopata			Mr. and Mrs. Richard Uihlein	Anirudh Ajith	Mr. and Mrs. Steven L. Brown
Mary Martin and Scott Lowe			Peter M. Vale	Dr. and Mrs. Dominic J. Allocco	Nancy and William Brown
Mr. and Mrs. Alan J. Magerkurth			Barbara G. Van Cura	Jill and Richard Almeida	Mr. and Mrs. Thomas Buck
					Maira and Howard Buhse, Jr.

^TTrustee ^DDeceased ^EEmployee

HONOR ROLL

Theresa and Dwane Burken	Barbara and David Dodson	Mollie and Karl Gimpel	Mr. and Mrs. Ayaz Jafri	William M. Lee, Jr.	Stuart A. McCrary and Nancy L. Davis
Judith A. Caloud	Mr. and Mrs. Richard Doonan	Geoffrey Glass	Mr. and Mrs. James S. Jasionowski	Glenn Lefkovitz	Mr. and Mrs. Jeffrey R. McDonald
Drew A. Carhart	Tracy L. Drake	Mr. and Mrs. David B. Golder	Char and Jerry Johnson	Mr. and Mrs. Sigmund Lefkovitz	Vera and Peter McDonnell
Mr. and Mrs. Walter R. Carlson	Beth and Harry Drucker	Adrian Golobic	Maryl R. Johnson	Sandy and David Lentz	Dr. and Mrs. Randall K. McGivney
Mr. and Mrs. Robert E. Carroll	Andrea M. Dudek	Felipe R. Gonzalez and Kathleen Courtis	Joyce and Richard Johnson	Ernest Levine and Janice Gork	The Peter J. McGrail Family
Mr. and Mrs. Frantz R. Cartright	Mr. and Mrs. Harvey Dulin	Mr. ^D and Mrs. John C. Goodall Jr.	Mr. and Mrs. Robert A. Jones, Jr.	Carrie Herschman and Bradley Levison	Joyce Meggett
Mia Celano and Skip Dunn	Ralph P. Earlandson	Mr. and Mrs. Mark J. Greenwood	Mr. and Mrs. Paul R. Judy	Dr. and Mrs. Michael S. Lewis	Steven A. Melnyk, MD
Mr. and Mrs. Jogesh Chandran	Earth Force	Ann and Alan Grelyak	Kathleen G. Kallan	Mr. and Mrs. Robert Lewis	Ken Metcalfe
Kathryn and Wilfred Chapleau	Glenna R. Eaves and Christopher J. Boebel	Catherine A. Griffin	Sona Kalousdian and Ira D. Lawrence	Ira Lichtenstein and Susan Goldsmith	Mr. and Mrs. Laurens J. Mets
Susan and Tom Chemler	Laura and Steven Edgar	Mary M. Grobarcik	Laurel and John Kasang	Charles N. Lindsey and Zikri Yusof	Dr. and Mrs. Ernest E. Mhoon, Jr.
Diane D. Clarke	Diane S. Edlefsen and Phil Harler	Kristie Grzywinski	Mr. and Mrs. William O. Kasten	Mr. and Mrs. Bert H. Lindstrom	Mr. and Mrs. Michael E. Mikolajczyk
Betty L. Cleeland	Mark C. Egan and Katherine Z. Egan	William M. Hales Foundation	Gavlin Family Foundation	Bruce Linger and Laura Louger Linger	Catherine E. Miller ^E
Dawn and Thomas Clewett	Linlee and Charlie Elbert	Mr. and Mrs. Joseph P. Hamilton	Mr. and Mrs. Kenneth Keller	Kristin Lingren	Emily Marie Miller
Joseph Cofield II	Rossana and Donald Elder	Mr. and Mrs. Thomas Hammerman	Jamie M. Kelly ^E	Thomas E. Lofgren and Sarah Anne Lofgren	Karen L. Miller
Mr. and Mrs. John C. Colman	Victoria and Thomas Eley III	Mr. and Mrs. M. Hill Hammock, Jr.	Katharine J. Kelly	George J. London Memorial Foundation	Marilyn and Chintan Mistry
Mr. and Mrs. Thomas W. Coyle	Roberta Johnson Ellerman	Robert F. Haskell	Cassie Kim	Michelle Lozins	Mr. and Mrs. Thomas M. Monahan
The Honorable Barbara Flynn Currie	Nancy and Dan Engel	Mr. and Mrs. Allan Hausfeld	Jenny and John Kinsella	Carol A. Macola	Beverly J. Moody
Robin Currie and Robert Beeching	Gary L. Eppling	Andrew Hazard and Anne Heathcock	Margaret and Thomas Kittle-Kamp	Marvin W. Makinen	Diane and Jim Moore
Mary Cygan and Francis Bruey	Patricia M. Erickson	Joanne E. Heal ^D	Catherine and Douglas Knuth	Nina Mann	Anne M. Morgan ^E
Kathy and Joseph Daley	Nicole and Frank Femali	Joyce E. Heidemann	Mr. and Mrs. Melvin J. Koenigs	Gabriel Marchan	Joyce and Rick Morimoto
Mr. and Mrs. Robert J. Darnall	Esther and Stephen Fettingner	Rebecca Herron and Arun Surath	Mr. and Mrs. John E. Koliopoulos	Mr. and Mrs. William Marcyniuk	Sabrina R. Morton
Laurie and Bruce Davidson	Amy M. Fielek	The Hill Group	Karen and Mark Koten	Mr. and Mrs. David Markovitz	Vijai K. Moses and Sunshine Mitchel
Mr. and Mrs. Allen R. Davies	Lewis Flint	James Hill	Mr. and Mrs. James R. Krick	Mr. and Mrs. Emil J. Martinec	Emmett Mottl
Susanne and Kent Davis	Kyle Fonjemie	Melissa Hilton and Jonathan Perman	Mary K. Krigbaum and Patrick Fitzgerald	Susan and Marco L. Martinez	Cheryl E. Mounts and Carla Williams
Mary J. DeThorne	Meggan Friedman and Sam Valenzisi	Mrs. Edward M. Hines	Kelly and Brian Krob	Annette and John Martini	Mr. and Mrs. James G. Murphy
William DeWoskin and Wendy S. Gross	Susan H. Friedman and Neil R. Friedman	Marilyn B. Hirsch and Gary Gordon	Gaurav Kumar and Sneha Thakur	Carmen Maso	Janet Murphy
Donna Diamond	Mr. and Mrs. William J. Friend	Craig J. Holderness	Emerson and Martha Lacey	Mrs. Donald W. Mather	Mr. and Mrs. James Murray
Mr. and Mrs. Blair C. Dickinson	Mr. and Mrs. Chris Gallmeyer	Mr. and Mrs. John L. Houston	Bruce Lander	Mr. and Mrs. Richard P. Mayer	Mr. and Mrs. James W. Myers
Cindee and William Dietz, Jr.	Mr. and Mrs. John E. Gepson	Rose Houston Charitable Foundation	Donna La Pietra and William H. Kurtis ^I	Heidi and Gregory Mayer	Mr. and Mrs. Joseph Navarre
Sarah and Jim DiMatteo	Pat Gill and Richard Wheeler	Rex M. Hunt	Winfred M. Leaf	James McCormack and Evelyn Zatkoff	Cynthia and Thomas Neal
Carol and Paul Dittmann	Michele Gillett and Simonie Woerfel	Kristen and Josh Jacobs	Leslie A. Lee	Lauren and James McCourt	Mr. and Mrs. Neil C. Nelson
					Gerald Newman

Marjorie and Christopher Newman
 Mr. and Mrs. Ray E. Newton
 Lora Nickels and Thomas Tague
 A. J. Nocchiero
 Patricia and John O'Brien
 William O'Donnell^D
 Virginia Olsen
 Tod A. Olson and Julie Stauffer
 Mr. and Mrs. Robert W. Orr
 Holly Ost
 Pat Pappas
 Barbara Parker
 Eleanor Parker
 Mr. and Mrs. Homi B. Patel
 Scott R. Pattullo and Jenny A. Johnson
 Jennifer A. Pavelec
 Deirdre and Christopher Pawell
 Mr. and Mrs. William B. Pearce
 Frederic C. Pearson
 Robert Peretti and Quaylin Peretti
 Abigail Perkins
 Sheldon James Perlow and Sandra J. Allen
 James W. Peters
 Karen Peters
 Mr. and Mrs. Michael F. Petersen
 Mr. and Mrs. Thomas D. Philipsborn
 Mr. and Mrs. Burt Pickard-Richardson
 Mr. and Mrs. Louis R. Pignotti, Sr.
 Mr. and Mrs. Thomas G. Piña
 John Pincenti

Jean and Joe Ponsetto
 Elaine and Ronald Prebish
 Sandra and Tim Prettyman
 Lee B. Price
 Dr. and Mrs. Richard A. Prinz, MD
 H.J. Przybylo
 Elizabeth T. Pyott^D
 Mary Quigg
 Shanna Quinn
 Helene and Norman X. Raidl
 Dr. and Mrs. Mark A. Ratner
 Dr. and Mrs. Timothy W. Raykovich
 William J. Reinke
 Reliable Fire & Security
 Patricia Ann Riley
 Abigail L. Ristow^E
 Denene Roberts and Edward Holm
 Lynne King Roberts
 Jeanette Rodriguez^E
 Alexander K. Rogers
 Teri-Ellen and David Rogers
 Marilyn Rohn
 Rosenson Foundation
 Debran Rowland and Luke Hanley
 Anna and Keith Ruskin
 Vicky Sanchez^E, Juan Perez and Family
 Julie and John Schaff
 Dr. and Mrs. Morton O. Schapiro
 Susan D. Schlough and Andrew D. Abbott, PhD
 Annette Schmit
 Frank Schmitz
 Terri and Paul Schroeder
 Mr. and Mrs. Stevan F. Schweighardt

Denise Seif and Robert A. Laible
 Seneca Foods Corporation
 Robert V. Shannon and Gina B. Kennedy
 Gabrielle Esposito and Matthew Shearer
 Timothy C. Sherck
 Nikki and Mark Shields
 James V. Shipp and Nancy Marie Casper
 Terry and Jack Shouba
 Bette H. Sikes and Joan Pederson
 Mr. and Mrs. Michael Simpson
 Mary and James Smith
 Geraldine Smrcina
 Ann and John Snyder
 Susan and Michael Soble
 Solot and Karp Family Foundation
 Kathy and Ron Sonenthal
 Michelle Sotak
 Heather T. Sparling and Jason Bakk
 Margaret Spears and Ronald Spears
 Laura Speck and Kimberley Speck
 Jocelyn Stanley and Eric Stanley
 Emily and Stephen Stanley
 Mr. and Mrs. Leon C. Stecher
 Deborah and Steve Stefani
 Jessica and Erik Steffensen
 Momoko Steiner
 Mr. and Mrs. John A. Stepan
 Amy and John Stevens
 Dawn K. Stiers
 Gary L. Strawn

Lisa and Kevin Stringer
 Usha Subramanian^E and Deepak Raghunathan
 Barbara and Edwin Swanson
 Linda J. Swanson
 Mr. and Mrs. Robert J. Syrup
 Mr. and Mrs. Casmir Szczepaniak
 Pamela Szokol
 Christine and Kenneth Tanaka
 Mr. and Mrs. J. Hall Taylor II
 Richard Thayer
 Kanjana Thepboriruk
 Beverly J. Timm
 Janine M. Tollestrup
 Shelley Torres and William Aldeen
 Mr. and Mrs. James M. Trapp
 Sally L. TreKell
 Mr. and Mrs. John E. Van Horn
 Sandy E. Van Tilburg
 Lynn Van Vreede
 Frances S. Vandervoort and Peter O. Vandervoort^D
 Sara Vegh and Ken Ziejewski
 Dr. and Mrs. Jeffery S. Vender
 Mariah Vichich
 Mr. and Mrs. James R. Vieregg
 Belle Waldfogel and Georgean Goldenberg
 Marge Walls and Cassandra Sawyers
 Carol Watkins
 James and Kimberly Watson
 Julia C. Webb and Laura Christman
 Leonard L. Weber
 Mr. and Mrs. Andrew J. Weddig
 William W. Weeks^D



SUE in the Flesh

The centerpiece of the Field Museum's traveling exhibition *SUE: The T. rex Experience* is a life-sized replica of the *Tyrannosaurus rex*. This model of the fossil known as SUE took nearly a year to create. Field Museum scientists worked with artists at Eagen, Minnesota-based Blue Rhino Studio to ensure the model not only represented the latest research on *T. rex*, but was a faithful reconstruction of SUE in particular. No detail was overlooked, from the arrangement of bumps and scales on SUE's face to the piercing green eyes, which are based on those of crocodiles. The artists even included the scars and bruises suggested by SUE's plentiful broken and healed bones. The result is an unprecedented opportunity to look a *T. rex* in the eye, and to imagine the rough-and-tumble life of this 67 million-year-old predator.

(Above) The "fleshed out" model of SUE with a juvenile *Edmontosaurus* in its mouth made a brief appearance in Stanley Field Hall in 2020.



Field Forward

At the outset of the pandemic, many cultural institutions, including the Field, closed their doors. With no visitors and ticket sales, the Museum was faced with a daunting financial challenge. In response to this unprecedented crisis, the Board of Trustees launched a COVID-relief effort to sustain essential operations and core mission-related activities. Catalysed by early challenge gifts from Trustees, the *Field Forward* effort raised \$870,000 from members and donors in a three-month period, including more than \$257,000 from 934 donors on Giving Day alone! The Museum is grateful to its community of loyal friends and supporters.

Dianne and Michael Weinand
Carolyn M. White
Laura Ann Wilber
Sonja and Nathan Will
Amy and Chad Williams
Mr. and Mrs. Gary Wilson
Geoff Wing
Barbara A. Wolf
Carole Wood and Carl Jenkins
Kay and David Wulf
Diane Yarborough
F. William Zandrew
Julia and Bruce Ziegler

\$250 to \$499

Anonymous (32)
Cyrus H. Adams
Rebecca M. Adams
Mr. and Mrs. David L. Ader
Susan S. Adler
Julieta Aguilera-Rodriguez and Andrew Johnson
Mr. and Mrs. Gary D. Ahlquist
Jessica and James Ahn
Magali Alarcon and Ashley Martinez
Mr. and Mrs. Walter Alexander
Elizabeth Allen
Patricia Alvino and Nora Winsberg
AmazonSmile
Richard and Andrea Amend
Bonnie J. Andersen
Gregory M. Anderson
Karen and Kimball Anderson
Thomas Anderson
Anita Andren and Lennie Naughton
Edith G. Andrew

Alona W. Anspach
Jan Marie Aramini and Michael Pettersen
Ruth Archer and Jim Helke
Mr. and Mrs. Joshua Arlow
Mr. and Mrs. Bruce T. Armstrong
Ann G. Ash
Jacob Astroski
Mr. and Mrs. Brett A. August
Kaye B. Aurigemma
Mary and Derek Baars
Mr. and Mrs. John T. Baldwin
Bonnie and Michael Balkin
Cynthia Ballew and Michael Smith
Theresa and Todd Bannen
Allison M. Barnes
Bertina and Sylvester Barnes
Erin Barrett Ellefsen and Eric Ellefsen
Frances Barrett
Chris Basoukeas
Linnea M. Bass
Douglas D. Baum and Lynne M. Wait
Mr.^D and Mrs. James N. Bay, Jr.
Mr. and Mrs. Kenneth J. Bazarnik
James Bebley and Tracey Ladner
William T. Beck and Doreine Carson
Alice and Drew Becker
Michael J. Becker
Mr. and Mrs. Robert D. Becker
Mr. and Mrs. Richard Beem
Nancy Behrendt and Carl B. Pedigo
Jennifer and Gerald Bekkerman

Jenna Beltrano
Mr. and Mrs. Stephen E. Benefiel
Ellen and George Benson
Mr. and Mrs. Robert A. Benziger
Dr. and Mrs. Michael Bercek
Angela and Alan Bergeson
Julie Beringer
Paul Berks
Mr. and Mrs. Michael Berman
Cinda Berry and Arthur Krumrey
Lynn J. Besser
Marjorie and Miles Betley
Mr. and Mrs. Adrian D. Beverly
Jennifer and Charles Bezold
Tuhina Bhatt
Lois J. Bider^D
Dr. and Mrs. Henry S. Bienen
Robert Biga
Andrea Billhardt
Hilary Bingle
Michael Bishop and Vonora Bishop
Tony Bizzieri
Mr. and Mrs. Richard B. Black
John M. Blinke
Mr. and Mrs. James P. Bloom
Mr. and Mrs. Stephen J. Bloom
Mr. and Mrs. Irwin A. Blumensadt, Jr.
Lauren and Michael Bockmier
Mr. and Mrs. Erwin F. Bogs
Therese M. Bogs and Wayne Haser
Ava and Thomas Boltik
Alexandria D. Bond
Tony Bondi

Norma and Don Bonet	Ginny and Roger Carlson	Emily Culberston	Marjorie Lyles and Thomas Doyle	Emily and Andrew Fedorowski	Mr. and Mrs. Thomas F. Glennon
Mr. and Mrs. Charles S. Boone	Michelle and John Carr	Dr. and Mrs. Arthur W. Curtis, MD	George D. Driggers	Laura Ferrell and Grant Riedesel	Paula Glitman and Doug Stone
Mena and David Boulanger	Mr. and Mrs. Steven C. Carter	John E. Cwenkala and Lorraine Brochu	Joanne R. Driscoll	Mr. and Mrs. Conrad T. Fialkowski	Anna Goddard
Dr. and Mrs. Aldridge K. Bousfield	Virginia H. Carter	Vickie L. Cyr	David Drummond	Amy and Cameron Findlay	Geoff Goldberg and Lynne Remington
Rachel H.E. Bowen and Kat Connor	David Cash and Emily Bowsher	Ivo Daalder and Elisa Harris	Mr. and Mrs. Joseph H. Drummond	Mary Ann Fischer and Robert Sharp	Joan Goldstein
Dr. and Mrs. Bruce H. Boyer	Raymond Chalom	Georgene DaDan	Patricia J. Dryer	Mr. and Mrs. Paul Fishkin	Jessica L. Gonzalez
Mr. and Mrs. Dennis E. Bozych	Paul Chandler	Ellen and James Dalton	Dr. and Mrs. Anthony B. D'Souza	Jennifer Fitzgerald and Amy Fitzgerald	Amy Goodnow
Julie and Tim ^E Bratley	Natali Chavez	Mr. and Mrs. John R. Damas	Balin Durr and Hilary Allen	Shannon and Kevin Fleming	Spencer Goodwine
William C. Brauneis	Lisa and Edward Cherullo	Fabian Damm	Judith M. Dye	Geoffrey A. Flick	Eve M. Gorman
Marie E. Brelin	Betty Chinn and Johnny Chinn	Mr. and Mrs. John A. Daniels	Eleanore C. Dykes	Mr. and Mrs. Walter H. Flood	Mr. and Mrs. Numa R. Gottardi-Littell
Marlene and David Bright	Paul Chismudy	Jackie and Donald R. Dann	Nichole and Greg Dziadosz	Delia Flores	Robert Gourley
Thomas Brockmann	Mr. and Mrs. John A. Chojnicki	Mr. and Mrs. Richard W. Daspit, Jr.	Andrew and Kathleen Ebbott	David C. Follmer and Anita M. Samen	Terry Grace and Judith Gaietto-Grace
Judith Broderick and Tiphonie Broderick	Emily J. B. Christian	Wanda Perry and Ryan Davis	Joyce Ebersman	Kim Folta	Sharon Graham and Terry W. McGuire
Kathryn Brodin	Marion and Roger Christoph	Carol and Pierre De Smul	Benjamin Ebert and Andrew Ebert	Madeleine Foote	Karen L. Granda and John S. Mrowiec
Mr. and Mrs. Daniel J. Brown	Cicero Plastic Products, Inc.	Mr. and Mrs. Mark D. Deaton	Rebecca Eldridge	Marcy and Lance Fortnow	R. Lance Grande, PhD ^E
Ryan and Elizabeth Brown	Elizabeth J. Cisar	David A. DeBoer	Mary Ellen and Tomy Endo	Diana L. and William J. Foster	Terry Grande
Ulrike and Thomas Brucks	Bridget B. Coffing	Diana L. DeBoy	Mr. and Mrs. Wayne Eng	Elizabeth Foster	Mr. and Mrs. Keith Gravel
Mr. and Mrs. Jackson Brunsting	Mr. and Mrs. Eric Cohen	Alex Dehgan	Michelle and Carl England	Susan and Paul Freehling	Kathryn Green
Mr. and Mrs. Archibald T. Bryant	Mr. and Mrs. Michael P. Cole	Robin A. Delapena ^E and Dani Nichols	Yoga by Allison	Mr. and Mrs. John F. Freund	Leila S. Green
Thomas M. Buess	Andrea and James Collingwood	Judith A. DeLeon	Douglas Ennis and Sandra Ringelstetter-Ennis	David H. Fry and Whitney B. Morris	Mary and John Greenwald
John F. Burke, Jr.	Mrs. Roosevelt D. Collins	Carrie Delzer James	Karen and Charles Ernst	Feliciano Fundador	Wendy L. Greer
Mr. and Mrs. Timothy L. Burke	Thomas P. Conde	Daniel DeWitt	Mr. and Mrs. Ronald L. Eshleman	Thomas F. Gajewski and Marisa Alegre	Elaine Griffin
Julia L. and Walter E. Busse	Joan Conger and Julia Conger	Mr. and Mrs. William Differding	Ruben Esparza	Christopher Galassi	Ed Gross and Alma Blazquez
Mr. and Mrs. Paul Butera	Michael Connolly	Marilyn Diller	Jo and Gabriel Esteban	Elizabeth Gardham	Nancy and John Gustaitis, Jr.
Mr. and Mrs. Joseph M. Cablk	Lorraine M. Conroy	Dr. and Mrs. ^E Daniel Dilling	Mr. and Mrs. Thomas E. Fahrenbach	Leslie and Craig Garthwaite	Mr. and Mrs. Richard E. Guzik
Victoria and Bruno Caccamo	Angela and Christopher Coordes	William D. Dini	Harry R. Fair III and Carolyn E. Jordan	Carole C. Gatch	Samuel Hadden
Eileen M. Cahill and Family	Mr. and Mrs. Gordon Coppoc	Mr. and Mrs. John M. Dixon	Mr. and Mrs. James Fanuzzi	Laura D. Gatland	Dr. and Mrs. Joseph R. Hageman
Frances Cahill and Cynthia Cahill	JoAnn and Todd Coughlan	Joshua Dlouhy	Stephanie and David Farnia	Katherine Gause	James C. Hagen and Colleen Hagen
Mr. and Mrs. David R. Campbell	Mr. and Mrs. Stephen E. Cox	Mr. and Mrs. Robert S. Dobis	Tiffany Farriss and George DeMet	Julie L. Gentes	Dianne S. Haines and Julie Davis
Stacey Canova	Dolores E. Cross, PhD	Christy Domin	Julia B. Faust	Mr. and Mrs. John Geweke	David C. Hale
Roxanne Capron	David Crouch	Leonard and Patricia Dominguez	Mary and Paul Favaro	Sallie and George Gill	Holley Hall
Kenneth Carlson	Jill and Michael Crowley	Sarah and Ramsey Donnell	Julie A. Federico and Alton Jay Mitchell	Mr. and Mrs. William Gillespie	
	Sandra K. Crown	S. Downey Fund		Peter Ginn	
	Marie Cuevas and Rachel Mayer				

HONOR ROLL

Sophia H. Hall	Melissa Genova Hill and Joel Hill	Mr. and Mrs. Mark A. Isaily	Verla Kasmerchak	Mr. and Mrs. Joseph A. Kosinski	Mary and Will Leland
Mr. and Mrs. Errol R. Halperin	Emily and Ty Hillegonds	Mr. and Mrs. Glynn Isoda	Claudia A. Katz	Bernard Krawczyk	Mr. and Mrs. Kurt A. Lentsch
Ardath Hamann and Colin Drozdoff	Mr. and Mrs. Richard M. Hirsch	Cheryl Istvan and Keith Daubenspeck	Jennifer and Brad Keck	Ruta and Mitchell Krawczyk	Janet Leon and Imad Makdah
Bruce J. Hamburger	Lelia Hirsch-Amadio and Anthony Amadio	Mr. and Mrs. Todd G. Jackson	Kelly Keil	Jennifer M. Krejci	Glenn Leonard and Mary Anne Daher Leonard
Michael Hammerman	Donald W. Hitzeman	Judith M. Jackson and Dannielle G. Jackson	Denise A. Kelley	Mr. and Mrs. Jeffrey A. Kriezelman	Sheryl Leonard-Schneck and Tom Schneck
Mr. and Mrs. Michael S. Hammond	John Hoefer and Ellen Z. Beckley	Kristen Jacobsen	Samantha and Brian Kelly	Mr. and Mrs. Larry S. Krucoff	Jack Lerman
Jae Han and Junghyun Bae	Mr. and Mrs. Geoff Hoffmann	Dr. and Mrs. William M. Jagiello	Lee Kendall and Gregory Horvath	Dona Krug	Barry Lesht and Kay Schichtel
Larry L. Hanes	Amanda and James Hoftiezer	Mr. and Mrs. Robert A. Jahnke	Mr. and Mrs. Thomas J. Kenney	Juliann Krupa	Joanne and Craig Leslie
Joseph R. Hanley and Kristy L. Mardis	Jo Ann and Edward Holba	Magda Jakubowska and Fernando Assens	Hannah M. Keogh	Marybeth and Edward Kuhrt	MSgt. and Mrs. Gary L. Lessenberry
Donna Hanlon Jensen and Donald Jensen	Honeywell International	Andrew James and Rakkana Craig	The Honorable and Mrs. Robert J Kepka	Kathryn S Kundert	Mr. and Mrs. Raymond Leuthold
Robert Hanlon and Barbara MacDowall	Mr. and Mrs. Joel D. Honigberg	Rosalie and Andrew Jansen	Susan B. Kern and Alex Yamron	Mr. and Mrs. Walter W. Kurczewski	Pravin Lewis
Arthur R. Hansen, Jr.	Jaap Hoogstraten ^E	Janice A. Jarnholm	Mr. and Mrs. Patrick Kerpan	Lynne La Jone and Chris Mollet	Gilbert Lichstein and Ruth Czarnecki-Lichstein
Valerie and Edward Hatcher	Thomas A. Hootman and Pamela J. Sisler	Catherine A. Jaselskis and Gary G. Alberts	William K. Ketchum	Mr. and Mrs. John R. La Montagne	Stephanie Linn and Seth Krantz
Martin F. Hauselman	Mr. and Mrs. Thomas Hopkins	Mr. and Mrs. Donald Jeffers	Mary Ann Khan	Felicia LaGioia	Sean Lino and Boris Lino
David C. Hawley ^D	Elizabeth A. Hopp-Peters and Kurt T. Peters	Olivia Z. Jiang	Diana and James King II	Dr. and Mrs. Peter Lagios	Walter Liszewski
Robert Hay	Dr. and Mrs. Andrew Hsieh	Carl W. Johnson and Laura M. Bloom-Johnson	Betty and James Kirk	Deanna Laidler	Mr. and Mrs. William F. Lloyd
Lawrence R. Heaney, PhD ^E	Mr. and Mrs. David Hubbard	Deborah Johnson and Angela Nesci	Alexandra Kirschner	Mr. and Mrs. Dirk B. Landis	Mr. and Mrs. John William Locke
Margaret and Matthew Hefferon	Mr. and Mrs. Douglas Hubbard	Mr. and Mrs. Johnnie Johnson	Megan and Joseph Klein	Paula and Bill Lange	Dr. and Mrs. Eugene B. Loftin
Stacy and Trevor Hegranes	Mr. and Mrs. Phillip D. Hulben	Lois Johnson	Catherine Kleinmutz	Susan D Lannin and Albert F. Ettinger	Paula Loftus
James S. Heim	Mr. and Mrs. David C. Humphrey	Dawn Jones	Dr. and Mrs. Thornton C. Kline, Jr.	Barbara and Keegan Lannon	Jennifer and Richard Lombard
Paul Heinzman	Mr. and Mrs. Jeffrey L. Hunt	Savannah Jonkman	Carissa Kloncz and Alec Bunnell	Christine J. Laperuto and William J. Roznowski	Barbara Mankus Louthan
Adam J. Helman	N. J. Hunt and Barbara E. Miller	Richard W. Josd	Thomas Kmiecik	Kaitlin and Marcos Lara	Mr. and Mrs. Ralph Love
Mr. and Mrs. John Henderson	Megan and Nathan Hunter	David R. Joseph	Judith L. Knie	Ignacio Larrinua	Bianca Lozano and Jonathan Moreira
Mr. and Mrs. Frank X. Henke III	Dr. and Mrs. James D. Hurst	Kristina A. Kaar	Mr. and Mrs. John R. Knight	Deborah and Josh Larsen	Gerald Lucio
Ryan R. Henke	Syed S. Husain	Elyse Kallen	Timothy B. Knuth and Elizabeth Tate	Paul C. Larson	Spomenka M. Luedi and Hans Luedi
Karen J. Hennessy	Denise Hynes and Richard Van Breemen	Mary Gloria Kane and Vern H Kerchberger	Nichole Knutson	Tera and Robert Lavick	Mr. and Mrs. Philip R. Luhmann
Susanne Henning and Robert Henning	Mr. and Mrs. Thomas Hysell	Mr. and Mrs. John A. Karoly	Cheryl B. Kobetsky	Lisa Lawson	Thorsten H. Lumbsch, PhD ^E and Phillip Ramon
Lisa and Roy Henrickson	IBM	Diane S. Karzas	Mr. and Mrs. Paul N. Koch	Aaron Lebovitz and Donna Myers	Pamela A. Lunsmann and Kelly Englum
Mr. and Mrs. Paul M. Herkes	Chad Idol	Mary Kay Karzas and Warren K. Reiss	Ray H. Kocher	Malinda Lee	
Mr. and Mrs. Robert Hetzel	Susan Ipsen	Ian Kash	Christine and Henry Kokrda	Paul A. Lehman and Ronna S. Stamm	
Daniel P. Hidding		James Kaskas	Mr. and Mrs. Steve Kolodziej		
Mr. and Mrs. John W. Higgins			Mr. and Mrs. Ernest J. Konker		
Mr. and Mrs. Harlow N. Higinbotham			Alexander and Sarah Kosch		

Jane and Steve Lupton	David Mangefida	Marilyn McClory	Tamiye Meehan	Jose Dennis A. Monteverde	Kenneth Nassau
John R. Lurain and Nell S. Lurain	Karen and Ira Marcus	Meghan E. McCloud	Mr. and Mrs. John Meehl	Mr. and Mrs. Eugene F. Moore	Lisa Nemeroff
Alyssa and Yaniv Lusky	Sylvia and Lawrence Margolies	Lisa McClung and Blasko Ristic	Mr. and Mrs. James R. Meindl	Mr. and Mrs. David Moore	Robert E. Nerius and Mary Mc Naughton
Mr. and Mrs. Gregory Lynch	Mr. and Mrs. Christopher Martinez	Sharon McCollam	Joan and Jeff Mercuri	Susan and Thomas Moran	Gina M. Nicholas
Anna Lysakowski and Peter Lysakowski	Mr. and Mrs. Felipe Martinez	Elizabeth and John McDonald	Robert Merrick	Brittany G. Morgan	Eleanor A. Nicholson
Lenore L. and William S. Macdonald	Frank Martinez and Laura Ferguson	Sherry L. McFall and Kenneth J. Porrello	Robert C. Michaelson	Suzanne Morgan	Karen Nickelson
Judith L. Macior	Mr. and Mrs. John Massey	Donna and Brian McGinnis	Alysha and Daniel Miller	William A. Morgan	Neha Nigam
Mr. and Mrs. Craig A. Mackrides	Dr. and Mrs. James Mathews	Amy and Myles McGuire	Mr. and Mrs. Craig Miller	Tory Morris and Ren Morris	Jill Niland
Victor S. Magar and Deborah Oestreicher	Dwayne Matthiesen	Mr. and Mrs. Gregory L. McHenry, Esq.	Edmund Miller	Mr. and Mrs. Kurt M. Mueller	Hokuto Nishioka and Feyce Peralta
Lory and Steve Magenta	Mr. and Mrs. George A. Matwyslyn	John and Judy McIntosh	Jaclyn C. Miller	Mr. and Mrs. David Mui	Nora and Andy Novak
Mr. and Mrs. Michael S. Magnuson	Reverend Charles F. Matz	Mr. and Mrs. G. Thomas McKane	Robert J. Miller and Jill K. Goldberg	Carolyn Mulroney	June Novalich
Judith Mallchok	Charles Mauter	Gloria McMillan	Thomas Miller	Mr. and Mrs. James Mulshine	Patricia and Neil O'Connor
Richard D. Malone	Mr. and Mrs. Henry H. Maze	Simone McNeil	Melissa L. Mladek	Zina and Hector Munoz	Mr. and Mrs. Donald R. Oder
Allison and Kevin Manasse	Mr. and Mrs. Robert G. Mc Cann	Terry J. Medhurst	Michael E. Moats and Kathy Moats	Linda Munson and M. Cavana	Ellen ^E and Michael O'Hanlon
		Ingrid J. Medina and Juan A. Calderon	Cory Mollet	Elise Naccarato-Grosspietsch and John Grosspietsch	Melissa and Jon Oka
			Ambreen Momin	Dr. and Mrs. Jonathon H. Nadler	Jane Ann Olmsted
			Carrie and Luis Montestruque	Mr. and Mrs. Frank B. Nahser	



In Memory of **Lynika Strozier**

Lynika Strozier, a talented 35-year-old biology professor, succumbed to COVID-19 complications on June 7, 2020. Despite facing many challenges throughout her life, she drew upon her grandmother's strength and encouragement to succeed academically. Strozier started at the Field as a summer intern in 2009 and worked on several NSF-funded projects on liverworts, lichens, ants, and birds that led to new biodiversity discoveries. In March 2020 the Gantz Family Collections Center granted her the honorary appointment of Collections Associate in recognition of her accomplishments and contributions to the Museum's mission for over a decade. The Women's Board of the Field Museum is proud to be raising funds for a named internship position in memory of Strozier through their Youth Engagement Endowment campaign.

(Left) Lynika Strozier was a featured speaker at the 125th Anniversary Celebration and public launch of the *Because Earth Campaign*.



Platypuses glow?

Just when you thought the duck-billed platypus (*Ornithorhynchus anatinus*) couldn't get any stranger, a study in the *Journal of Mammalogy* found they glow under UV light! A team of scientists led by Allison Kohler of Northland College took advantage of the vast collections of mammals at the Field Museum to examine UV reflectance in flying squirrels and other mammals. Lo and behold, the platypus glows! Uncovering glowing platypuses indicates this trait exists across all three major mammalian lineages, furthering the question at the heart of this research, why do some animals glow and others don't?

(Left) A specimen of *Ornithorhynchus anatinus* currently housed in the Field Museum's mammal collections. (Specimen Number 160038).

Mr. and Mrs. Edward H. Oppenheimer, Jr.
Curtis Oren
Mike Oren
Mr. and Mrs. Baltimore F. Ortega
Alejandro Ortiz
Robert Osiol
Mr. and Mrs. James J. O'Sullivan, Jr.
Barbara E. Otte and Bruce C. Shelley
Lois Rainey Owens and Kimberly Dawn Owens
Lorraine Pachankis
Sarah R. Packard
David Painter and Jean A. Carroll
C. Michelle and Donald Panovich
Elaine and Frank Parker
Jacqueline A. Parks

Mary Jo Parks
Catherine and Robert Parks
James D. Parsons
Diane D. Pascal
Chris and Jim Patterson
Lois M. Pausch
David J. Peace and Karen T. Ferrer
Mr. and Mrs. Antonio Pedraza, Jr.
Gail L. Peek
Rebecca and David Perry
Levanna Perry
Mr. and Mrs. Boris Pervan
Verne Peterson and Julie Lipkin
Richard P. Peyton
Mr. and Mrs. Jeffrey Pfluger
Elizabeth B. Phillips
Joseph Phillips
Marrey and William Picciotti

James G. Picha
Mr. and Mrs. Edmund Piehler
Mr. and Mrs. Jerome W. Pinderski, Jr.
Mary and Joseph Plauche
Peter W. Plumley and Anna M. Rappaport
Walter and Janice Podolski
Claire Poelking
Jennifer and Julius Pohlenz
Jennifer and Joshua Poje
Andrew and Judy Porte
Rebecca and Alan Porterfield
Scott Portman and Rosemary Caruk
Charles A. Pounian, PhD
Mr. and Mrs. John W. Prange
Maggie Prendergast
Colette Pulfer
Mr. and Mrs. John F. Pustola
Adriana and Adrian Quinones

Camellia and John Radzinski
Johanna and Bobby Rahal
Christine Ott Rahill
Paula Raila
Mr. and Mrs. Craig Randall
Elizabeth Ranucci and Nicolas Ranucci
Ying Rao and Guorong Liu
Rebecca Rasmussen and David Greenwald
Maria Rosa and S. Louis Rathje
Mary L. Reed
Mark S. Reiter and Kathleen A. Ward
Colleen and Charles Remsberg
Raiselle C. Resnick and Kenneth I. Resnick
Kristina Rice and Jacob Lesgold
Linda Richardson

Edith Riley	Arturo Sanchez	Judith and William Sherry	Sarah D. Sprowl	Mr. and Mrs. James E. Taich	Mr. and Mrs. Dominic P. Turchi
Linda J. Rings	Nancy A. Sans	Michelle Shlimon and James Colquhoun	Devin Stalker	Diane Talbot and Alex Wiggins	Mr. and Mrs. John L. Turner
Abbey Rintels and Asenet Torres	Coletta Sargant	Shirley C. Shriver	Erin and Joshua Stanfill	Mr. and Mrs. John Tamisiea	Scott F. Turow and Adriane Glazier Turow
Fabiola Rivas and Peter Savage	Dr. and Mrs. Peter J. Sargon	John Shugrue and Elizabeth Price	Clark Stanford	Yotetana Tanthawichian	Norma and J.J. Uhran
Angela Robertson and James Kman	Mr. and Mrs. Milan Saric	Akanksha and Amit Shukla	State Street Corporation	Dr. Arthur N. Tarvardian and Dr. Pauline Tarvardian	Jason Uhtoff
Mr. and Mrs. Timothy M. Rockhill	Peter F. Saunders and Patricia J. Larson	Lisa and Thomas Siebert	Paula Steffensmeier	Josh Tavernier	Julia Ursan
Diane Rodevich	Maria Scavo	Anna and Mark Siegler	Mr. and Mrs. Kurt J. Steib	TE Connectivity	Theodore M. Utchen
Erik Roffelsen and Nelleke Roffelsen-Peters	Darline Scelzo	Barbara and Chris Sifter	Annette and Richard Steinke	Steven F. Tempel and Deborah Zekich	Mr. and Mrs. James F. Vallyely
Anne Rogers and John Reppy	Meredith and David Schacht	Joy Silver and Bruce Goldberg	Ann A. Stephens	Nicholas K. Terrell	Mr. and Mrs. Robert C. Vallone
Barbara and David Rohde	Bernadette Scheib and Randal Scheib	Cathryn Simkins	Mr. and Mrs. Phillip L. Stern	Monique Terry	Melody A. Van Wermeskerken
Ron G. Rohde	Judith and David Schiffman	Cecelia Simmons and Leontine Clark	Seth M. Stevenson	Donna and Kevin Tews	John M. VanderLinden and John Wm. Butler, Jr.
Edgar H. Rojas	David C. Schlakman	Ilene Simmons	Mr. and Mrs. Howard L. Stocker	Walter F. Thiele	Shawn K. VanDerziel ^E and Jay Clarke
Mr. and Mrs. Michael J. Romano III	Sebastian Schmidt	Junie L. Sinson	Erica and Paul Stockton	Aurea and Richard Thomas	Deborah and Eugene Varnado
Dorothy and Allan Romberg	Mr. and Mrs. Stephen Schmitt	Carol B. Skala	Jane Stover and Ben Stover	Mr. and Mrs. Robert W. Thomas	Robert L. Thompson
Mr. and Mrs. Benjamin Rooks	Dr. and Mrs. G. Stephen Scholly	Joan K. Skowronski	Mr. and Mrs. John J. Streit	Gary L. Ticus and Sandra Pietkewicz	Gary L. Ticus and Sandra Pietkewicz
Mr. and Mrs. Phillip B. Rooney	Seth Schrank	Margaret Skrmetti and Jerel Bangayan	Douglas Stroup and Steve Porter	Gretchen and Gregory Tieder	Gretchen and Gregory Tieder
Mr. and Mrs. Theodore Rosean	James Schroeder and Steve Schneider	Marcia E. Skwarek	Mr. and Mrs. David J. Stueckemann	Chad Tischer	Chad Tischer
Mr. and Mrs. Harry B. Rosenberg	Alin ^T and Luke Schubert	Michele J. Smalley and Angela Caggiano	Chi Hwa W. Su	Ramon Tiu, MD and Nicholas Todorov	Ramon Tiu, MD and Nicholas Todorov
Mr. and Mrs. Jack Rosenfeld	David L. Schultz	Annette and Marvin Smith	Sansanee Suksangwarn and Simon Weng	Joan Toland and Michael Lonero	Joan Toland and Michael Lonero
Mr. and Mrs. Bernhard Rosenstein	Travis Schulz and Gretchen Wolf	Karen and John Smith	Patrick Sullivan	James Tomaszewski	James Tomaszewski
Gracemary and Alex Rosenthal	Mr. and Mrs. Charles Schweizer	Kristy Smith and Steven Constantine	Elizabeth and James Summers	Mr. and Mrs. Wm. Ronald Tomecko	Mr. and Mrs. Wm. Ronald Tomecko
Marsha and Robert Rosner	Jane Schwuchow and Ronald Schwuchow	Mary L. Smith ^T	David Sundquist and Terri Schultz	Nancy Torbet ^D	Nancy Torbet ^D
Julie and Paul Roth	Dr. and Mrs. Dow Scott	Maureen Dwyer Smith and Edward Byron Smith, Jr.	Sarah Sutton and William Solar	Mary Jo Tozzi	Mary Jo Tozzi
Mrs. Stephen W. Rothermel	Paul Selwold and Tom Armitage	Travis Solberg	Jennifer and Jon Swanson	Mr. and Mrs. Barton G. Tretheway	Mr. and Mrs. Barton G. Tretheway
Linda and Barry Rowan	Michele Semin	David Sollitt	Mr. and Mrs. David W. Swartz	Mary McDermott Tritley and Matthew Tritley	Mary McDermott Tritley and Matthew Tritley
Bobbie F. Rudnick	Ricardo J. Sequeira	Robert Somrek	Loretta B. Sweeney	Shaun Trock	Shaun Trock
George and Kathleen Rummel	Mihra Seta	Thomas Sonleitner and Supriya Mehta	Patrick Sweeney and Sharon Brown-Sweeney	Mr. and Mrs. John P. Tubutis	Mr. and Mrs. John P. Tubutis
Jonathan Russell	Amy Sexton	Robyn Sotak	Ruth and Steven Sweetser	Mr. and Mrs. James A. Tuchler	Mr. and Mrs. James A. Tuchler
Patricia and Paul Russell	Mr. and Mrs. John A. Shaw	Norman F. Spielman	Kenneth Swiatkowski and Valerie Schoen	Mr. and Mrs. John E. Tulley	Mr. and Mrs. John E. Tulley
Mr. and Mrs. James W. Ryan	Mr. and Mrs. Charles Shenk	Mr. and Mrs. Donald E. Sporleder	Megan S. Synenki	Adam Tumas, Jr.	Adam Tumas, Jr.
	Sandi and Michael Sheppard	Mr. and Mrs. Eric Spratford	Dominador Tabontabon		

Laura S. Washington^T and Michael William Richmond
Mr. and Mrs. David B. Waud
Thomas Way
Julie Weatherbee and Robert Droppelman
Trudie Weatherford and Mike Bourland
Mr. and Mrs. Greg Webb
Karen and Richard Weiland
Mary Weisman and James Weisman
Gene J. Weiss, MD
Theresa and Mark Welegala
Joanne and Frank Weschler
James and Emily Wexler
Dr. and Mrs. Samuel S. Wexler, DDS
Sheila and Brian Whalen
Andrew J. White
Elizabeth White and Margaret Benish
Willard E. White, PhD
Piotr Wietrzak
Monica Wilkins
Illya Williams
Audrey Williams-Lee and Byron Lee
Karen G. Wilson
Kathleen M. Wilson
Mr. and Mrs. Timothy R. Wilson
Malcolm E. Winkler and Tiffany Tsui
Dorothy H. Wolff and Eric S. Wolff
Brian Wolkenberg and Sari London
Edith and George Wolnak
Shirley Woods
Randall Wosilus
Mina and Tim Wright

Charisse and Brian Yamaguchi
Linda and Owen Youngman
Kristin and Kent Zandstra
Eric R. Zarnikow
Jesusita Zavala
Jennifer and Henry Zemla
Mr. and Mrs. Brian Ziebart
Linda and John Zimnie
Mr. and Mrs. Earl Zingraf
Robert K. Zschernitz^E
Susan and Victor Zurcher
Lisa and Michael Zuroff

The Edward E. Ayer Society

The Edward E. Ayer Society recognizes donors who remember the Field Museum through bequests, trusts, and other planned giving or life income gifts.

Anonymous (23)
Barbara Stolberg Adelman and Steven Adelman
Dr. Katrin Asbury and Mr. Shawn Greene
Rodney Austin
Mr. and Mrs. James H. Banach
Lorraine and Randolph Barba
Mr. and Mrs. Robert D. Becker
Susan M. Benton^T
Ruth and Robert Berns
Lois J. Bider^D
Susan K. and Willard L.^T Boyd
Richard T. Brannegan
Frederick W. Brooke III
Mrs. George R. Brumlik
Leo R. Buckert
Valerie and Joseph Cablk

Dianne and Thomas Campbell
Rita and John^T Canning
Clarissa H. Chandler^D
Neil M. Chisholm
Josephine Chyatte
Mr.^T and Mrs. Worley H. Clark, Jr.
Mr. and Mrs. William D. Coates
Mr. and Mrs. Stephen F. Condren
Mr.^D and Mrs. Frank W. Considine
Mark Crane
Rebecca Davidson
Susan and Mark Dawson
Cheryl and Michael Del Campo
Janet W. Diederichs
Candace and Gary Drimmer
Glenna R. Eaves and Christopher J. Boebel
La and Philip Engel
Fabio T. Fabbri
Carl B. Fausey
Mary and Bruce Feay
Suzette Feher
Sally Fletcher
Dr. and Mrs. Curtis B. Frank
Penny and John E. Freund
Glenn L. Gabanski
Linda and Wilbur^T Gantz
Beth and Robert Gordon
Gilda M. Greenberg and Norman Charles Greenberg^D
Delta A. Greene
Joyce and Timothy Greening
Katherine Leslie Griem, M.D. and William M. Montag
Mr.^T and Mrs. Lewis S. Gruber
Tonja Rizai Hall

Jeanne M. Hansen^D
David D. Hiller^T
Marjorie and John Hines
Mary P. Hines^D
Peggy L. Hoberg
Anita and James Hornbrook
Arlys R. Hunt
Datin Tan Fui Lian and Dato Dr. Robert F. Inger^D
Judy Johanson
Stacy L. Johnson
Mr. and Mrs. Robert A. Jones, Jr.
Kathleen and Alex Kallend
Verla Kasmerchak
Beth and Eric Kauffman
Constance^T and Dennis Keller
Mr. and Mrs. Jerry M. Kelly
Patricia A. Kosmerl
Jan Lariviere and Richard^T Lariviere
Fay and Daniel Levin
Diane v. S.^T and Robert M. Levy
Gail J. and Robert B.^T Loveman
Janice and Bernard Mack
Ann C. Mallow
Patricia A. Malloy
Marie Spinozzi Marotta
Mr. and Mrs. Robert G. McCann
Nancy A. McDaniel
William B. McDonald and Ptah Sekhmat Osiris
M. Madlan McKernan
Erma S. Medgyesy
Lois and Robert Moeller
Anne M. Morgan^E
Sandra L. Mueller
Sandra and James Napolitan
John P. Nielsen

Karen A. Nordquist
Mr. and Mrs. John R. O'Connell
Irma Parker^D
Dr. and Mrs. William R. Parkhurst
Jo Ann and Joseph Paszczyk
Marie E. Peruscini and Edward C. Bapple
Susanne Petersson
Mr. and Mrs. Richard J. Pigott
Julia Potter
Mr. and Mrs. Mane E. Pritza
Mrs. Alfred Lunt Putnam
John R. Rahn and Patricia E. Rahn
Dominick S. Renga
Alan Resetar^E and Donna Resetar
Richard F. Reynolds
Anita J. Rogers
Mr. and Mrs. Benjamin Rooks
Michael Roth
Robert Rowan
Jeanne M. and John W.^T Rowe
Ryan S. Ruskin^T
David L. Schlotterback^D
Douglas M. Schmidt
Franklin R. Schmidt
Patricia O. Schnadig
Thelma L. Schwartz
Mrs. Monica Sentoff
Mr. and Mrs. G. Curtiss Shaffer II
Charlene and Bob Shaw
David T. Shayne
Pamela S. Sheffield
Louise M. Sherman
Joanne Silver
Adele S. Simmons^T
Rebecca Gray Smith
Gabriela and Scott Sparacio

Christopher E. Strangio
Steven Strohmeier^E and Josie Brown
Judith B. Sugarman
Lawrence Witry and Margaret Tomaszek-Witry
Linda J. Volino
Rose and Robert Wagner
Georgian Goldenberg
David A. Wargowski
Nestor R. Weigand, Jr.
Dianne M. Weinand
Willard E. White, PhD
Claudia L. Winkler
Barbara A. Wolf
James G. Young
Kristie Zessin
The Zigterman Family
Christine C. Zogus

2020 Estates and Bequests

The Field Museum recognizes the following individuals for their bequests, legacies, and estate gifts.

Vivian E. Conner
Dr. Evelyn Frank Trust
Edward C. Jerkey
Peggy L. Morrow
William O'Donnell
Irma Parker
Betty D. Prout
Nancy Torbet
Mrs. Herbert A. Vance
Nancy L. Wald
William A. Wedgworth
Barbara H. West
Dorothy B. White
Ann S. Wolff

2020 Matching Gift Companies

The following companies generously matched gifts from their employees and retirees in support of the Field Museum in 2020.

Anonymous
AbbVie
Aetna
Bank of America
Bayer Corporation
Beam Suntory Matching Gifts Program
BP
Caterpillar Foundation
The Chicago Community Trust
Credit Suisse
Exelon
The FM Global Foundation
Arthur J. Gallagher & Co.
Bill and Melinda Gates Foundation
GE Foundation
Google
W.W. Grainger, Inc.
IBM
ITW
The Joyce Foundation
JPMorgan Chase Foundation
Kayne Anderson Capital Advisors Foundation
LPL Financial Foundation
Masco Corporation
Microsoft Matching Gifts Program
Peoples Gas
Pfizer
Salesforce.org, Inc.

Texas Instruments Foundation
TIAA CREF
U.S. Bank
USG Corporation
Winston & Strawn LLP

2020 Gifts In-Kind

United Airlines

2020 In-Kind Gifts to Collections

ANTHROPOLOGY

Dean E. Arnold, PhD
Susan Bass Noel
Bawan Jacon Clanes,
Mindanao Indigenous People's Council of Elders and Leaders
Anne W. Brown
Mary Callahan
Rose-Marie Fraser
Gabel Museum of Archaeology,
Boston University
Anne Kern
Richard Maryonovich
Theresa L. Miller
Laura Sudler
Cynthia S. Weill

BOTANY

L. W. Curtis
Joan Damerow, PhD^E
Eastern Illinois University,
Charleston
Eidgenössische Technische Hochschule ETH, Zürich,
Switzerland
Florida Museum of Natural History, Gainesville

Harvard University, Cambridge
Missouri Botanical Garden, St. Louis
New York Botanical Garden, Bronx
North Carolina State University, Raleigh
Ramkhamhaeng University, Bangkok, Thailand
Real Jardín Botánico, Madrid, Spain
Royal Botanic Gardens, Kew, United Kingdom
United States National Arboretum, Washington D.C.
Universidad de Concepción, Chile
Universidad de Costa Rica, San Jose
Universidad de Magallanes, Punta Arenas, Chile
Universidad Nacional Autónoma de México, Mexico City
Universidade Federal do Rio Grande do Norte, Natal, Brazil
Université Laval, Quebec City, Canada
University of Arizona, Tucson
B. Wilson

GEOLOGY

Bill Kronner (he donated a holotype fossil fish we have in the exhibit hall)
Bruce Stinchcomb
Dean Sherman
James and Sylvia Konecny
Jim Tynsky (he has donated various pieces over the years to the fossil fish collection)
Keith Robitschek

Museum of Texas Tech University
Rick Hebdon
Roy Young
Terry, Gail, Christopher, and Evan Boudreaux (they donated many meteorites and a fossil bird holotype that we have on exhibit)

Thomas V. Testa

Tom Lindgren (he donated a holotype plant specimen, plus a number of fish specimens over the years).

University of Antananarivo, Madagascar

BIRDS

Fran Alcantara
Thomas G. Anton
Josie Archuleta
Laura Bailey
Tim Balassie
Anna BallaE
J. Banometz
Daniela Barnes
D. Barrio
Sarah Bass
Kellie Bauer
Alissa Baum
Bay Beach Wildlife Sanctuary
Leslie Bayles
M. Bernat
A. Biewer
Stephanie Beilke
Nancy Bigelow
Jonathan Bissows
Gwen Blossom
K. Bohora
Nancy Bradt
Franky Breems
Brookfield Zoo



Field Museum Joins Bud Billiken Parade

The Bud Billiken Parade and Picnic, the largest African-American parade in the US, is an annual back-to-school tradition with a long history on Chicago's South Side. 2020's parade took the form of a one-hour TV broadcast. The Field had a short video in the education portion featuring the museum's youth programs and the stories of two stellar program alumni, including Keller Science Action Center staff member Ylanda Wilhite. Featured programs included Mighty Acorns (grades 3–5), Earth Force (grades 6–8), and Calumet Is My Backyard (grades 9–12), which engage Chicago Public Schools students in biodiversity and conservation in their communities.

(Above) The Museum's video highlighted educational opportunities offered at the Museum and beyond.

Giving Day

The Field Museum's sixth annual Giving Day, held on September 30, was one of the most successful to date. \$257,618 was raised from a record 936 donors, surpassing a goal of \$150,000 from 700 donors. In addition to attracting 236 new donors to the Museum, more than 65 Giving Day Ambassadors (comprising staff, Field supporters, and your favorite *T. rex*—SUE!) set up fundraising pages and raised more than \$45,000 for the Museum. After six years, Giving Day is a favorite tradition at the Field thanks to the generous support of our community.

(Below) Manager of the Pritzker Laboratory Kevin Feldheim, PhD, pulls DNA samples out of cryogenic storage.



J. Bunker
M. Burgess
Bonnie Bush
L. Byzrwicz
A. Caldarulo
Elaine Carlson
M. Carrington
Kevin Carroll
Gwen Casey
J. Catallom
Chicago Bird Collision
Monitors
Liz Challoner
Janet Chang
Theodore Chapman
Suzanne Checchia
B. Chenoweth
Alexander Clifton
Deborah Cohen
Diane Cohen
Daryl Coldren
Jeff Coleman
S. Conner
M. Conroy
Caroline Cooper
V. Cortis
Steve Constantelos
Andrew Cox
Rita Crimmins
Kelly Cronin
Angela Daidone
J. Dalton
Marjorie David
T. Davis
Patricia Davoust
Steve Deines
Robyn Detterline
Michael O. Dillon, PhD^E
Joan Dittman
Georgiana Dodd
Ann Domek

Patrick Donahue
Kelly Dougherty
Cheryl Dudeck
Janna Dutton
John Dziadus
Glenna Eaves
Louise Ebel
Suzanne Edwards
L. Ellerman
Shannon Ellis
Michelle England
Marty Farrington
Joe Feliciano
Sandy Fejt
D. Fieri
Margot Fischer
A. Flores
Ryan Ford
Itamar Frances
Robert Frye
Ryan Fuller
Glenn Gabanski
Diane Galleher
Ivan Garcia
M. Garfinkel
Oliver Georg
J. Geslewitz
Kathleen Gillespie
Gerry Ginsburg
Bonnie Glen
N. Goldberg
Valentina Gomez
Kristin Goodchild
Mike Grady
James Graham
Cindy Gray
Bruce Green
S. Griegoliet
L. Grimm
R. Haick
A. Hall

Matt Hejna
Mary Hennen^E
Patrick S. Herendeen, PhD
M. Hernandez
M. Hinami
Kanae Hirabayashi
Maria Hlohowskyj
S. Hodges
Laine Hoffman
C. Holden
Scott Holingue
Patrick Hu
Dan Hudson
L. Hyndman
Datin Tan Fui Lian
Tamima Itani
Carla Jaffe
M. Jaggars
Judy Jakush
Julie Jeslewitz
Susan Jicha
Genevieve Johanet
David Johnson
J. Johnson
Jessica Johnson
Luna Johnston
Scott Joss
Rebecca Judd
S. Judd
John Kaiser
Tim Kano
Will Kano
Pam Karlson
Becky Kass
V. Katz
Joyce Keithley
John Kelly
Patti Kelly
L. Keyes
Sarah Kimber
Dennis Kingsley

Gerald Klemm
 Steven Klink
 J. Kothley
 L. Kouba
 Ruth Kurczewski
 K. Lara
 Amy Lardner
 Jim LaRochelle
 J. Larsen
 Al Legzdins
 Mike Lehman
 K. Lehner
 P. Liecano
 Lorna Lightle
 Hans Lim
 A. Lizcano
 N. Lloyd
 Julie Long
 Loren Lopez
 Sharon Losos
 Max Loude
 Peter Lowther, PhD
 Mary Loye
 K. Lynch
 S. Machugin
 Elsa Madrigal
 Debbie Maher
 Ashley Makarowski
 B. Malather
 Jennifer Marshall
 JoAnn Martinec
 K. Martinez
 Colleen McKeigh
 Margaret Mechtenberg
 Lynne Mecum
 Laura Mendoza
 Greg Mercer^E
 Julia Meredith
 Paul Miessler
 G. Mikels

Minnesota Dept. of Natural
 Resources
 Nat Miller
 Lucy Milling
 Clover Morell
 Madeleine Murphy
 M. Myerly
 Noelle Neel
 N. Neuhouser
 Betsy Newenhayse
 L. Nieman
 I. O'Brien
 Tim Oesterle
 K. O'Mara
 Katie O'Neill
 Megan Oropeza
 Nathan Overly
 Philip Pappas
 E. Parker
 M. Parola
 Cathy Patrick
 B. Payne
 Barbara Pearce
 Joy Peplinski
 Duyimiris Pequero
 D. Perry
 Dorothy Pesch
 Therese Peskowits
 Mark Peteler
 Shelby Peteler
 Caitlin Peters
 Kimberly Polka
 Margarita Poromanska
 Marina Post
 Jeff Prendki
 K. Price
 Annette Prince
 Robert Prorise
 Anita Quint
 Teri Radke
 E. Ramirez

H. Reilly
 E. Rensink
 Hennie Reynolds
 Patricia Rich
 Rawlins Riles
 Alexander Roche
 Geri Rode
 Bob Rogers
 Charlotte Ross
 Laurel Ross
 M. Roof
 Tony Rothschild
 Paul Routsong
 K. Rudenki
 Mykl Ruffino^E
 Bob Russ
 Jill Russell
 Lynette Ryzewicz
 Erick Saklak Sanders
 Jeremiah Schatt
 J. Schaumburg
 R. Schettler
 Susan Schmidt
 M. Schmitt
 Kim Schollenberger
 J. Scholt
 Alma Schrage
 Gabrielle Schreiber
 Sarah Schwartz
 Greg Septon
 Leslie Shad
 Karen Shaw
 Barbara Shaw
 E. Siciliano
 D. Simpson
 Alison Sloan
 Jacob Smith
 Jeff Smith
 Julia Smith
 L. Smith
 Natalie Smith

T. Spratt
 A. Sohn
 C. Sonnier
 Laura Southcott^E
 David Stagman
 Jim Steffen
 Candace Steffens
 P. Stegner
 K. Stelford
 Bill Strausberger
 Kathy Swanson
 Sandy Swanson
 Betty Sweetland
 R. Tanda
 Ann Tanner
 Linda Tartof
 J. Tavolino
 Colleen Tiesch
 Simon Tolzman
 S. Touzalin
 Mike Trinchitella
 Brian Tsuru
 Suzanne Turner
 D. Utley
 Denise Umpiere-Roth
 Victoria Velinski
 L. Venderly
 S. Verhaeghe
 Denise Verret
 Anita Victorn
 Mary Vierega
 Linda Volin
 Sarah Von Fremd
 Oswald Von Starck
 Kristin Wacker
 Ellen Wadlej
 Cicily Watson
 J. Wawro
 D. Wear
 Marcia Weflen

Mary Wiesen
 Robert Wild
 Chris Williamson
 Willowbrook Wildlife Center
 M. Witowski
 Sandy Woltman
 David Wong
 Ann Woodward
 Lisette Zaid
 Nancy Zeglen
 Amanda Zeigler
 B. Zerante
 Sophie Zivovic

INSECTS

Colin Bailey^E
 Brookfield Zoo, Chicago
 Zoological Society
 André Bochov
 James H. Boone
 R. M. Brattain
 Edilson Caron
 Eastern Illinois University
 I. Enushchenko
 Andrea Gruver
 Derek A. Hennen
 Ulrich Irmeler
 Michael A. Ivie
 E. A. Khachikov
 James Krupa
 Donald C. Lowrie
 György Makranczy
 Weston Opitz
 Luis Daniel Perez Sauni
 Steve Parshall
 Graham Pickren
 Amanda Robinson
 Rodrigo dos Santos
 Machado Feitosa
 A. E. Seago
 Tim Struyve

INVERTEBRATES

Frank E. Anderson
 Joseph A. Arruda
 Brookfield Zoo, Chicago
 Zoological Society
 David Jablonski
 Alice A. Muehlethaler
 John G. Shedd Aquarium
 Miklós Szekeres
 Nguyen N. Thach
 ByronD and Sally Torke
 Jan Johan ter Poorten
 Research Associate

MAMMALS

Bay Beach Wildlife
 Sanctuary
 Brookfield Zoo, Chicago
 Zoological Society
 Gary S. Casper
 Mary and Bruce Feay
 Debbie Johnson
 James J. Krupa
 Lincoln Park Zoo
 D. R. Ludwig
 Molly M. McDonough, PhD
 Antonio R. Mendes Pontes
 Minnesota Department of
 Natural Resources
 Kathleen Murphy
 Maureen H. Murray
 Simon Musila
 Aristofanes Pontes
 John G. Shedd Aquarium
 Jay Smith
 Noe de La Sancha, PhD
 MJS Richards
 Mary Anne Rogers
 Douglas Wamolts
 Willowbrook Wildlife Center

Research Associates, Adjuncts, and Emeriti

The Gantz Family Collection Center, Keller Science Action Center, and Negaunee Integrative Research Center would like to thank their many Research Associates, Adjunct Curators, and Curator Emeriti for their collaborations over the years.

Kathleen Adams
Windsor Aguirre
Edgar Allin
Patricia Alvarez-Loayza
William Surprison Alverson
Grace Anderson
Toni Anderson
Thomas Anton
Anchalee Aowphol
Gabriel Arellano
Dean Arnold
Philip J. Arnold
Gloria Arratia
Peter Avis
Sherif Baha El Din
Daniel Ballhorn
Rosemary Kathleen Barraclough
Fred Barrie
Brian Bauer
Allison Beck
Deborah Bekken
William Bemis
Daniel Blake
Richard Blanton

Nicholas Block
Charles Kevin Boyce
Mark Bramstedt
R. Michael Brattain
Adriana Bravo
Paul Brinkman
Stefania Briones
Christopher A. Brochu
Bennet (Ben) Bronson
James A. Brown
Barbara Brown
Michael A. Bryson
Greg Buckley
William Burger
Rosa Cabrera
Andrew Campbell
Matthew T. Carrano
Stephanie Clark
David Clarke
Julia Clarke
Michael Ivor Coates
Raymond Codrington
Timothy M. Collins
Richard Condit
Paul Copp
Peter Crane
Ana Crespo
Darin Croft
Andrew Davis
Noe U. De la Sancha
Paulo de Oliveira
Susan DeFrance
Terrence C. Demos
Arvin Diesmos
Michael O. Dillon
Sophie Dipti Sarkar
Molly Doane
Marlene Donnelly
Isabelle Druc

Paul R. Duffy
Timothy Earle
Bethany Elkington
David Elliott
María Encarnacion Pérez
John J. Engel
Jake Esselstyn
Ronald K. Faulseit
Daniel Fisher
John Flynn
Michael Foote
Catherine Forster
Jörg Fröbisch
Nadia Fröbisch
Gary Galbreath
Bucky Gates
Timothy Gaudin
Daniel L. Gebo
Paul Gignac
Gonzalo Giribet
Ian Glasspool
Mark Golitko
Eric Gorscak
James G. Graham
Kelly Gravier
Matthew Greif
Lawrence Grossman
Juan Guevara
Jonathan Haas
Melina E. Hale
William Hammer
John M. Healy
Mitch Hendrickson
Josh Henkin
Nancy Hensold
Patrick Herendeen
Eric Hilton
Andrew L. Hipp
Paul Hockings

Sara Hoot
James Hopson
Jen-Pan Huang
Sabine Huhndorf
Rainer Hutterer
Boris Igic
Christine Janis
Sharon Jansa
Bruce Jayne
Yanzhu (Bamboo) Ji
Zi-Feng Jiang
Carolyn Schiller Johnson
Matthew H. Johnson
Laura Junker
Charles Kahindo
Christian Kammerer
Lawrence H. Keeley
Julian C. Kerbis-Peterhans
Douglas Kiel
Susan Kirt
Dr. David Kistner
David Krause
Daniel Ksepka
Christopher W. Kuzawa
Mario A. LaMothe
Vincent M. Lamotta
Michael J. Lannoo
Lucinda P. Lawson
Patrick Leacock
Steven Leavitt
Edgar Lehr
Blanca León
William Leonard
David P. Lewis
Vachira Lheknim
Mark Liechty
Zhiwei Liu
R. Eric Lombard
Maria Cecilia Lozada

Robert Lücking,
Ernest Lundelius
Holly Lutz
J. Dylan Maddox
Renan Maestri
Suzanne Malec-McKenna,
Roberta Mason-Gamer
Greg Mayer
Thomas W. McDade
Molly McDonough
Matthew McDowell
Jennifer McElwain
Sean B. Menke
Joseph Milanovich
Heather Miller
Phillip G. Millhouse
Antonio R. Molina,
John Monaghan
Katherine Moore Powell
Corrie Moreau
Debra (Debby) Moskovits
Gregory M. Mueller
George Mugambi
Donna Nash
Eugenio Nearn,
Jr., Lorin I. Nevling
Alfred F. Newton
Linda Nicholas
Doris Nitecki
Philip Novack-Gottshall
Patricia Novick
Lynn K. Nyhart
Claire Odland
Kevin Ogorzalek
Rahul Oka
Somsak Panha
Nikos Papadopoulos
J. Michael Parrish
William Pestle

James L. Phillips
Graham Pickren
Oscar Pineda Catalan
Roy E. Plotnick
Fawn Pochel
Linda Prince
Ayesha Qazi
Ashwin Ravikumar
Timothy A. Rawlings
Gayatri Reddy
Robert Reisz
Marcos Antonio Ríos Paredes
Mario A. Rivera,
Helen Robbins
Martin Robert
Cynthia Robin
Ray Rogers
John Rogner
Laurel Ross
Dakota Rowsey
Rudyard Sadleir
Evan Saitta,
Rachel Santymire
Apostolos Sarris
Andre Sartori
Esther Schechter
Imke Schmitt
Birger Schmitz
H-P Schultze
Helen Schwartzman
Christopher Scotese
Lydia Scott
David Sepkoski
Paul Sereno
James Shannon
Nicola Sharratt
Neil Shubin
Christian A. Sidor
Steven B. Simon

Dr. Michelle Singleton
Graham Slater
Arif Smith
Adam Smith
Stephanie Smith
Nathan Smith
D. Doel Soejarto
Dr. Sergio Solari
Robert Stallard
Charles E. Stanish
Gil J. Stein
Thomas Stephan
Betty Strack
Bryan L. Stuart
Robert B. Stuebing
Stuart S. Sumida
Daniel A. Summers
Stephen Sutton
Gavin Svenson
Paula Tallman
Fui Lian Tan
Jose Tello
Jan Johan ter Poorten
Margaret Thayer
Ryan Thoni
Robert M. Timm
Luis Alberto Torres
Montenegro
Smiljana Ubois
Nathan Upham
Sylvia Vatuk
David Vaughn
Isidoro Sanchez Vega
Benjamin Vining
Matt Von Konrat
Harold K. Voris
Robert Voss
Heather Walder
Jonathan Walz

Erin B. Waxenbaum
Paul W. Webala
Mark Webster
Mary J. Weismantel
Fred E. Wells
Jun Wen
Alexandra Westrich
Robin Whatley
Kevin P. White
Sloan Williams
E. O. Wilson
Karen Wilson
David H. Wise
Andre Wyss
Yaowu Xing
Kenneth Young
Sera Young
Nyree Zerega

Volunteer Leadership

The Women's Board of the Field Museum

The Women's Board promotes the Field Museum's scientific programs, exhibitions, and educational outreach. Members facilitate philanthropic activities to provide essential unrestricted and restricted support.

EXECUTIVE COMMITTEE

Sandra Deromedi
President (2020–2022)
Laura Podjasek
Vice President (2019–2021) and Science Salon Co-Chair

Sri Sullivan
Vice President (2020–2021)
Tonja Hall
Secretary (2020–2022)
Beth Glass
Treasurer (2019–2021) and WIS Luncheon Co-Chair
Kass Sigal
Member at Large (2020–2022)
Leslie McLamore
Member at Large (2019–2021) and Annual Appeal Co-Chair
Donna Greenberg
Immediate Past President
Beth Kauffman
Annual Appeal Co-Chair
Kathleen Klaeser
Annual Appeal Co-Chair
Barb Brown
Behind-the-Scenes Tour Co Chair
Kelli Klauber
Behind-the-Scenes Tour Co Chair
Carrie Healy
Field Dreams Co-Chair
Jennifer Martay
Field Dreams Co-Chair
Susu Block
Member Engagement Chair
Elizabeth Pruett
Membership Co-Chair
Sophie Bross
Membership Co-Chair
Laura Front
Nominating Chair
Lynda Williams
Outreach Co-Chair
Bev Pinaire
Outreach Co-Chair
Lindsay Carlton
Science Salon Co-Chair
Jeannie Tisbo
WIS Luncheon Co-Chair

Lis Meeker
Women in Science Fund Co Chair
Susan McBride
Women in Science Fund Co Chair
Lesley De Souza
Science Advisor (ex-officio)

Field Associates

The Field Associates are committed to engaging young professionals through dynamic networking and leadership opportunities, unique programs, meaningful service, and fundraising to support scientific discovery and public education.

EXECUTIVE COMMITTEE

Alin Schubert^T
President 2020–2022
Risha Kotecha
Vice President 2020–2022
Julia C. Webb
Secretary
Alexandria D. Bond
Communications Co-Chair
Jenna Beltrano
Development Co-Chair
Kyle Fonjemie
Development Co-Chair
Anirudh Ajith
EVOLVE Co-Chair
Mariah Vichich
EVOLVE Co-Chair
Emmett Mottl
Membership Co-Chair
Andrew J. White
Membership Co-Chair
Michael Cozza
Programming Co-Chair
Charles Zidek
Programming Co-Chair

Anthropology Alliance

The Anthropology Alliance promotes interest in and support of the Field Museum's anthropological collections and research.

STEERING COMMITTEE

Susan Mikalauskis, *Chair*
Joyce E. Chelberg
Morris Goodman
Melissa Genova Hill
Janice Bell Kaye
Patricia A. Malloy
James O. Stola
Sheila N. Whalen
Carl F. Wolf

Giving Day Ambassadors

The following donors, members, volunteers and staff served as Giving Day Ambassadors. They played a vital role in the success of this initiative by extending its reach through their networks and by raising funds through personal giving pages.

Rachel Baily^E
Katie Baltensperger^E
Stanley Banks^E
Diane Brunsting
Evelyn Brunsting
Molly Butler^E
Meg Caswell
Atalo Chansari^E
Kyle Daniels^E
Aimee Davis^E
Sandra Deromedi^T

John DeWerd
Stacey Drake^E
Brad Dunn^E
Trish Farrell^E
Lauren Fitts^E
Chandler Garland^E
Tonja Hall
Nicolette Hansen^E
Katy Harris^E
Erika Hasle^E
Toya Hemmingway
Edward Ho
Janet Hong^E
Calvin Jenkins, Jr.^E
Bob Jones^E
Elyse Kallen
Charles L. Katzenmeyer^E
Beth Kauffman
Jamie Kelly^E
Kathleen Klaseser
Lorena Lopez^E
Alexandra Lucio^E
Kyle Malone^E
Catherine Miller^E
Yvette Morris
Lisa Niziolek^E
Carter O'Brien^E
Michelle O'Connor^E
Ellen O'Hanlon^E
Dixie Ost^E
Michael Padilla^E
Allison Paul^E
Ernst Pierre-Toussaint^E
Ginevra Ranney^E
Izabella Redlinski^E
Anne Rezabek
Mae Riordan^E
Jeanette Rodriguez^E
Vicky Sanchez^E

Paulette Scrima^E
 Jacob Shuler^E
 Steven Strohmeier^E
 Usha Subramanian^E
 Annie Sullivan^E
 Scott Tews^E
 Stephanie Ticas^E
 Roger Tuan^E
 Madeline Tudor^E
 Dawson White
 Darnell Williams^E
 Shannah Wojtyska^E
 Barbara Wolf
 Michael Wren^E
 Beatrice Zaragoza^E

Field Museum Volunteers

**The following volunteers
made generous financial
contributions to the Field in
addition to their many hours
of service to the Museum.**

Jan Marie Aramini
 Janice M. Bell Kaye
 Betty A. Bergstrom
 Helen C. Bonbrest
 Joseph M. Cablk
 Drew A. Carhart
 James M. Costello
 Edward and Pam Coughlin
 Thomas E. Durica
 Ralph P. Earlandson
 Linda L. Egebrecht
 Marsha Fischl
 Delia Flores
 Sylvia E. Furner
 Katherine Gause

Arlene Ghiron
 Paula Glitman
 Timothy S. Greening
 Ann Grelyak
 Gayle Guzik
 Mattie H. Harris
 Richard M. Holm
 Judy Johanson
 Lois Johnson
 Mary Ann Khan
 Timothy B. Knuth
 Ernest J. Konker
 Janis Lariviere
 Joanne U. Levy
 John A. McKenna
 Thomas Miller
 Lois Moeller
 Robert Moeller
 John V. Morris
 Karen A. Nordquist
 Sahalee B. Price
 Colleen E. Remsberg
 Charles Ruedebusch
 Judith Sherry
 Marcia E. Skwarek
 Robert Somrek
 Lisa Stringer
 Chi Hwa W. Su
 Lauri Sugerman
 Wayne N. Svoboda
 Phyllis A. Walden
 David E. Willard
 Wendall W. Wilson
 Claudia L. Winkler
 Barbara A. Wolf
 William F. Zandrew

All Active Volunteers

Tanya Aceves
 Elise Adams
 Craig Adelman
 Valery Adorno-Cruz
 Evran Aksoy
 Jude Al-Abosy
 Natalie Aleman
 Kathleen Allan
 Naomi Altman
 Stephen Anderson
 Robert Andrini
 Marie Angkuw
 John Anglin
 Scott Anselmo
 Thomas Anton
 Barry Aprison
 Jan Marie Aramini
 Josie Archuleta
 Kaleigh Arnold
 Diana Arteaga Torres
 Alfredo Artega
 Michelle Aum
 Henry Bacha
 Katie Back
 John Balaban
 Aide Balcazar
 Stanley Banks
 Mer Baron-Pocius
 Joy Barriball
 Josefina Barron
 Norma Barron-High
 Tracy Bartels
 Heather Bartholomae
 Simon Bautista
 David Becker
 David Beer

Annie Belfor
 Janice Bell Kaye
 Tony Bellos
 Sharon Benjamin
 Beverly Bennett
 Deanie Bergbreiter
 Betty Bergstrom
 Gloria Berkwits
 Dyanna Bernier
 Allan Bernstein
 Nancy Bigelow
 Teresa Black
 Erryn Blake
 Ilana Blattner
 Nina Blinick
 Mary Ann Bloom
 Richard Bloomfield
 David Boehnlein
 Terry Bonace
 Helen Bonbrest
 Katie Bora
 Mary Boswell
 Robert Boswell
 Theresa Boswell
 Nora Bouacha
 Hannah Bradford
 Laverne Bradley
 Sherron Brangman
 Laurel Bresnahan
 Zalman Brimm
 Irene Broede
 Alan Brookes
 James Brooks
 Emily Brown
 Steve Brown
 Dan Browne
 Lindsay Browne
 Elizabeth Bruce
 Luca Brunozi

Nicole Bucio
 Lorraine Bujan
 Tori Bull
 Peter Buol
 Andi Burkholder
 Madison Burman
 AJ Buttala
 Joseph Cablk
 Louie Cabrales
 Del Cahill
 Tim Cahill
 Rebecca Caithamer
 Vinnie Camargo Penteado
 Robert Cantu
 Mary Jo Cappitelli
 Lilja Carden
 Drew Carhart
 Emily Carnalla
 Maureen Carr
 Mia Carrillo
 Bill Carroll
 Robert Case
 Connor Caserio
 Emma Casey
 Briselda Casimiro
 Ellis Caspary
 Miguel Castillo
 Gastone Celesia
 Kate Cescon
 Mary Chaiken
 Thomas Champion
 Lap Chan
 Lei-Lani Chan
 Carol Chang
 Mei Chao
 Lucy Chen
 Yeong Fu Chen
 Monica Chia-Chien Chen
 Anuja Choksi

Karina Choksi
 Jim Christian
 Chyi Chung
 Peter Chung
 Emma Cieslik
 John Cieszynski
 John Cipriano
 Emily Clark
 Nicole Claudio
 Aleksandra Clifton
 Bill Collins
 Jackie Cooney
 Lawrence Coronelli
 Emily Corrigan
 Camila Cortez
 Jim Costello
 Carole Cotter
 Edward Coughlin
 Pam Coughlin
 Mattie Counts
 Margaret Crawford
 Grace Crim
 Bea Cundiff
 Bridget Curry
 Gabriele Da Silva
 Zorica Dabich
 John D'Angelo
 Harpreet Datt
 Marjorie David
 Anne Davis
 Brady Davis
 Gina De Keersmaecker
 Sophie De La Mar
 Laura De Los Santos
 Carol DeBiak
 Karyn DeFranco
 Mark DeSantis
 Melissa Dessent
 John DeVaney

John DeWerd	John Fitterer	Ann Grelyak	Lucy Holden	Bruce Keating	Arline Lee
Imaru Di Bartolomeo	Sandy Fitterer	Bella Griesmaier	Bailey Holifield	Connor Keating	Catherine Lee
Meig Dickson	Lauren Fitts	Victoria Grigelaitis	Richard Holm	Deb Keene	Eli Lehmann
Philip Dittmann	Erin Fitzgerald	Andrea Gruver	Darcae Holmes	Thomas Kerstann	Abhimanyu Lele
David Dolak	Delia Flores	Sue Guensburg	Sharon Horn	Libby Keyes	Jessy Lembke
Catie Donahue	Miguel Flores	Berat Gulecyuz	Joanna Hosteny	Sammy Keyport	Sarah Levesque
Judy Dooley	Sharleene Frank	Casandra Gutierrez	Diane Houdek	Mary Ann Khan	Rebecca Levine
Bridget Doyle	Dorothy Frantz	Gayle Guzik	Astarte Howell	Irene Khatib	Joanne Levy
Bill DuBois	Christine Frazer	Richard Guzik	Briana Hryhorysak	Shi En Kim	Rick Levy
Laura DuBois	Hazel Fricke	Amy Gwilliam	Patrick Hu	Jan Kingman	Sophia Li
Matteson Duncan	Lila Fried	Troy Hambly	Mauricio Huertas	Sasha Kirschner	Michelle Liang
John Dunn	Roberto Fuentes	Sue Hamnik	Rebecca Hulst	Rachel Kistingner	Taran Lichtenberger
Thomas Durica	Sylvia Furner	Roger Hand	Sally Hundley	Gabriella Kitch	Margaret Lippert
Amelia Dutta	Glenn Gabanski	Beverly Harris	Lydia Hwang	Emma Kitchen	Lisa Lisoway
Jenny Earlandson	Jerry Gagne	Mattie Harris	Antony Ilievski	Nancy Klaud	Patricia Liszewski
Ralph Earlandson	Molly Gallahue	Ally Hecht	Tom Ioppolo	Griff Kleeman	Jon Littman
Linda Egebrecht	Patrick Gancarczyk	Joyce Hecht	Olga Iwaniuk	Jessica Klinge	Jessica Livingston
Frantz Eliacin	Maria Garcia	Marilyn Hecht	Bernice Jacobs	Joanne Kluga	Maxwell London
Gwyn Elimon	Katherine Gause	Ruthann Heidgerken	Patrick Jacques	Gabe Knott	Loretta Long
Rachel Elizondo	Peter Gayford	Mary Heisley	Norene Jamieson	Simon Knuth	Bryan Lopez
Eric Elshtain	Diana Gerberich	Toyia Hemingway	Britt Jenkins	Timothy Knuth	Nina Los
Liam Elward	Margot Getman	Tanya Hemphill	Marcy Jensen	Sandy Koch	Peter Lowther
Karen Engel	Arlene Ghiron	Susannah Hera	Judy Johanson	Sophie Kochanek	Mary Jo Lucas-Healy
Belle Ens	Amandeep Gill	Francis Herder	Gregory Johnson	Sebastian Kolaj	Ivan Luk
Kelly Enskat	Jaime Giraldo	Wendy Herder	Laura Johnson	Ela Kolano	Alix Lukas
Joshua Escobar	Ugne Gliaudelyte	Laura Hermosillo	Lois Johnson	Mary Konkel	Elizabeth Lunte-Hanson
Nkosi Evans	Paula Glitman	Jose Hernández	Tiffany Johnson	Sandy Kramer	Charlene Lyford
Annamarie Fadorsen	Renee Goddijn	Grant Herrejon	Walter Johnson-Geis	Kyle Kurfirst	Richard Lyford
Sara Fairbanks	Rachel Goldberger	Aaron Heuer	Breya Jones	Lucia Kustra	Alexander MacFarlane
Mireille Farjo	Holly Golvach	Richard Hidaka	Camila Kakabadse	Pearl Kwan	Michael Machura
Hannah Farrell	Andie Gomez-Patron	Timothy High	David Kalensky	Sophie LaBelle	Evan Madden
Scott Farthing	Denise Gonzalez	John Hill	Corinne Kampe	Paige LaCour	Paula Maia
Susan Faurot	Mitch Goodknecht	Margaret Hintz	Allie Kane	Alexa Lamprecht	Sandra Maki
George Fetherling	Peter Gordan	Mark Hirsch	Frances Kane	Victoria Landau	Ken Manchen
Jim Fetzer	Fred Goynshor	Edward Ho	Aviva Kaplan	Tom Lane	Jose Mari
Margaux Fischer	Mark Graham	Diep Hoang	James Kase	Colin Langs	Georganne Marsh
Marsha Fischl	Charles Grantham	Simone Hoekstra	Kaylee Kasper	Conor Langs	Joann Martinec
Genevieve Fisher	David Graves-Pomeranz	Mary Pat Hofer	Gabriela Kataoka	Tim Later	Jesse Martinez
Scott Fishman	Timothy Greening	Marjorie Hoffman	Nancy Kaufmann	Nikki Lavko	Rachel Martiniak

HONOR ROLL

Richard Maryonovich
Darlena Maxwell
William McAndrews
Stephanie McCarthy
Barbara McGrath
Etta McKenna
Karen McKibbin
Harper McKinney
Dave McManus
Thomas McNichols
Robyn Mech
Trinity Medellin
Elisabeth Meeker
Emma Mensah
Aaron Mercer
Susan Meschel
David Meyer
Paul Miessler
Patricia Miller
Ted Miller
Leslie Mindeman
Michael Minow
Richell Mintzlaff
Kat Missig
Jackie Mitchell
Melissa Mladek
Lois Moeller
Robert Moeller
Shahrazad Mohammadian
Chris Molek
Paul Moncada
Anita Morgan
Angie Morris
John Morris
Don Morrison
Bonnie Moskowitz
Albert Moy
Ram Moy
Soo Lon Moy

Eddie Moya
Jeanne Mueller
Sayantoni Mukhopadhyay
Eileen Murphy
Darlene Murray
David Nanberg
Barbara Naughton
Francisco Nava
Betty Newbart
Jeremy Ng
Sarah-Jane Nicholson
Jordan Nikkel
Doris Nitecki
Karen Nolan
Karen Nordquist
Robert North
Jackson Novak
Michele Nowak
Bryan Nugent
Michael O'Hara
Michael O'Leary
Nicolle Omiotek
Jakob Onayo
Sylvia Orellana
Frederick Orendach
Marie Orendach
Isa Orozco-Vela
Morgan Orzech
Celeste Osgood
Briar Owens
Izzy Pareja
Debra Parkhurst
Marianne Parrillo
Kathryn Passaglia
Jhil Patel
Tom Pawlik
Alex Pekerman
Ruby Pelayo
Andrew Peldunas

Leah Pellegrino
Sinem Perk
Mary Anne Peruchini
Therese Marie Peskowits
Phillip Peterman
Fran Peters
Matthew Peters
Connor Pichette
Jim Piekarczyk
Pete Pissios
Roy Pletsch
Christi Plume
Susan Plummer
Walter Polinski
Constance Porteous
Maranda Powers
Lee Price
Holly Prindle
Mane Pritza
David Prus
Anita Punkay
Betsy Quail
Jessica Quesada
Elaine Quinn
Andrea Quintana
Victoria Rai
Fernanda Ramazzini Staudt
Abby Ramirez
Cristal Ramirez
Diana Ramirez
Sonia Rana
Jessica Ras
Loran Recchia
Ashley Reilly
Sophie Reilly
Tristan Reinecke
Susan Reinke
Colleen Remsberg
Dennis Reppen

Emily Reyes
Anne Rezabek
Brenda Rivera
Leslie Robin
DJ Robinson
Rick Rodriguez
Rosalba Rodriguez
Lupe Rojas
Judith Rom
Madison (Maddie)
Romesburg
Mackenzie Roof
George Roth
Magda Roth
Michael Roth
Janet Rothkopf
Joseph Rowlett
Charlie Ruedebusch
Verna Ruiz
Troy Rumans
Axel Rutter
Robert Salm
Nina Sandlin
Mimi Sarwark
Lana Schade
Esther Schechter
John Schmadeke
Annette Schmit
Dawn Schreiner
Jeffrey Schroder
Phyllis Schulte
Linda Schultz
Daniel Searcy
Robin Secco
Tori Senerchia
Veronica Serrano
Karen Sharpe
Chen Shen
Theresa Shen
Betsy Shepherd

Judith Sherry
Bill Sherry
Yvonne Shields
Brenlee Shipps
Karen Sholeen
Hana Shroff
Maya Shroff
Daina Siliunas
Edith Silva
Elizabeth Simmons
Kathleen Simovits
Vidhi Singh
Hilary Sinkoff
Terri Sinnott
Nick Sitaras
Evan Sizemore
Marcia Skwarek
Kate Slattery
Kristin Smith
Laura Smith
Rebecca Smith
Shea Smith
Bob Somrek
Robyn Sotak
Beth Spencer
Robert Spieler
Becky Sponenburg
Tom Srnak
Marc Stackler
Sam Stanton
Zoe Stergiannis
James Stola
Donna Stone
Christine Stout
Kalman Strauss
Lisa Stringer
Chi Hwa Su
Diana Sudyka
Lorinda Sues

Lauri Sugerman
Noah Sullivan
Ali Sultan
Michele Sutter
Megan Suttner
Wayne Svoboda
Kellie Swadba
Jennifer Swillinger
Adrienne Szulczynski
Jeffery Taugner
Thorn Taylor
Laura Teipe
Tom Tervanis
JoAnn Thissen
Olivia Tomasiewicz
Yoali Torres
Lynette Troha
Gregory Trush
Jane Tyner
Niki Urell
Teresa Vaca
Oscar Valera Rico
Mary Valsa
Zethy Vargas
Emilio Vazquez
Bella Villatuya
Joshua Villatuya
Darren Vilmin
Madeline Vincent
Rachel Vincent
Christine Vittoe
Linda Volino
Andrew Vranicar
Usha Vyas-Major
Tyana Wachter Holden
Emily Wagner
Lisa Wagner
Phyllis Walden
Austin Waldron
David Walker

Kaitlyn Walker
 Qing Wang
 Jacoba Ward
 Yoka Washington
 Lindsey Weglarz
 Jessica Weller
 Aidan Weyland
 Conrad White
 Ellie Wilens
 Lesley Wilkinson
 Brett Wilkow
 Kuro Wilks
 Anne Willmore
 Wendall Wilson
 Claudia Winkler
 Phil Winn
 Anna Wisniewski
 Jack Wittry
 Barbara Wolf
 Deena Wolfson
 Seck Wong
 Emily Woodworth
 Justin Wytmar
 Jane Yakushiji
 Chloe Yanny-Tillar
 Phoebe Yates
 Constance Yokley
 Jamie Yong
 Julia Young
 Kurt Zahnle
 Rosa Zamora
 Bill Zandrew
 Howard Zar
 Haoyu Zhang
 Cassandra Zhao
 Charles Zidek
 Ben Zimmerman
 Olivia Zimmerman
 Mariel Ziperski
 Steven Zitowsky



Richard and Jan Lariviere Initiative

The Field Museum gratefully acknowledges donors who made gifts in honor of Richard and Jan Lariviere. Richard retired in August 2020, after eight years as Field Museum President and CEO.

Anonymous (2)
 Lorraine and Randy Barba
 Amy E. Best^T
 Mr. and Mrs. Harrington Bischof
 Judith S. Block^T
 Mr.^T and Mrs. Norman R. Bobins
 T. Kimball Brooker
 Barbara M. Brown
 Jacolyn and John^T Bucksbaum
 Rita and John^T Canning
 Joyce E. Chelberg
 Mrs. Roosevelt D. Collins
 Mark Crane
 Sir Peter^T and Lady Crane
 Mr.^T and Mrs. Kermit R. Crawford
 Marsha A. Cruzan^T and Thomas McGinnis
 Melissa and Oscar^T David
 Sandy^T & Roger^T Deromedi
 The Donnelley Foundation / Mr.^T and Mrs. Thomas E. Donnelley, II

Patricia J. Dryer
 Catherine H. Embree
 Mr. and Mrs. Robert Feitler
 Mr.^T and Mrs.^D Marshall Field V
 Nancy I. Foster
 Laura De Ferrari and Marshall^T B. Front
 Arden A. Frederick
 The Gantz Family^T
 Julia W. Goff
 Stanford and Ann Dudley Goldblatt
 The Grainger Foundation
 Karen Z. Gray-Krehbiel^T and John H. Krehbiel, Jr.
 Mr.^T and Mrs. Jack M. Greenberg
 Judy^T and Bill Greffin
 Hamill Family Foundation
 Tonja Rizai Hall
 Mr. and Mrs.^T King W. Harris
 David D. Hiller^T
 Mr. and Mrs. John L. Hines
 Ellen. F. Hyndman
 Jeani and Rich Jernstedt
 Judy Johanson
 Jamee Field Kane^T/The Edith B. and Lee V. Jacobs Fund No. 1
 Beth C. Kauffman
 Lindy and Mike^T Keiser
 Connie^T and Dennis Keller
 Jeff^T and Molly Keller
 Kathleen and Dennis Klaeser
 Mr. and Mrs. Adam Klauber
 Martin J. Koldyke
 William C. Kunkler III^T and Susan Crown
 Valerie S. Lewis
 Mr. and Mrs. Robert Linn
 Gail J. and Robert B.^T Loveman

Margaret B. MacLean^T
 Swati and Bobby^T Mehta
 Lora Nickels and Thomas Tague
 Mr.^T and Mrs. Michael O'Grady
 Kenneth W. O'Keefe^T and Jason Eric Stephens
 Cathy and Bill Osborn
 David C. Parry^T / EDNA Foundation
 Aurie A. Pennick, Esq.^T
 Ginevra^E and Ben Ranney
 Joan and Paul Rubschlager
 Amanda Rutledge
 Jessica^T and Steve Sarowitz
 Searle Funds^T at The Chicago Community Trust
 Mr. and Mrs.^T Michael D. Searle
 Mr. and Mrs. Jeffrey S. Sharp
 Charlene and Bob Shaw
 Pamela S. Sheffield
 Jai Shekhawat^T
 Adele S. Simmons^T
 The Smart Family Foundation
 Cia and Tom^T Souleles
 Barbara A. Speer
 Margie^T and Kevin^T Stineman
 Mr. and Mrs. Brian R. Sullivan
 SunCast Corporation
 Mary and Harvey Struthers
 Michael Tang^T
 Jeannie and Thomas Tisbo
 Mr.^T and Mrs. David M. Tolmie
 Lori and Marcus^T von Kapff
 Laura S. Washington^T
 Carrie and Jay Weaver
 Elie Weaver^T and Hilton Weinberg
 Lynda W. Williams, PhD
 The Abra Wilkin Fund

Nancy Hamill Winter^T
 Mr.^T and Mrs. W. Rockwell Wirtz
 Jason Wortendyke^T and Ariel Knowles Wortendyke
 Leslie Zentner

Tribute Gifts

IN HONOR OF

Phyllis Adams

Heather and Jacob Adams

Kenneth D. Angielczyk, PhD^E

Nicholas Varrone

Rachel L. Bailly^E

Todd Bailly

Mary Ann T. Bloom

Mr. and Mrs. Joseph M. Cablk

William C. Burger, PhD

Ceres Foundation

Paul Burris

Deyan Crow

Drew A. Carhart

Rebecca Carhart

Daniel Christensen

Aarthi Kuppannan

Jim W. Croft, PhD

Anonymous

Judith M. Dye

Patricia M. Erickson

Patricia M. and Charles Erickson

Judith M. Dye

Field Museum

Louise Adler

Hazel Ann Fricke

Gretchen Gillis

Wilbur H. Gantz III^T

Margaret Gantz
 Barbara Parker

Elizabeth (Beth) Glass

Bonnie and Michael Balkin
 Claudia Lubin

Bearett Golden

MaryAnn Mayhew

Emily L. Graslie^E

Andrew Hrycyna

Karen Z. Gray-Krehbiel^T

Mr. and Mrs. Patrick G. Ryan

Donna Greenberg

Mr. and Mrs. Philip D. Block IV
 Mr. and Mrs. Paul A. Bodine
 Lenore L. and William S. Macdonald

Alexandra C. and John D. Nichols

Donna and Jack^T Greenberg

Mr. and Mrs. Don Horowitz

Eric Gyllenhaal

Maria Pyra

Tonja Rizai Hall

Heidi Kiesler
 Mr. and Mrs. John A. Schweig

Kathryn Harris^E

Rachel Jacobs and Thomas Harris

Jean L. Herbert

Colleen A. McElligott

Bob O. Jones^E

Nancy Brown
 Anna Goddard
 David C. Schlakman

Nancy L. Jones

Amy Arcus

HONOR ROLL

Charles L. Katzenmeyer^E

John F. Binder
Elizabeth Gordon
Adam J. Helman
Mary Quigg

Connie^T and Dennis Keller

Judith S. Block^T
Bobolink Foundation
Mr. and Mrs. Robert J. Darnall
Melissa Farruggia
The Goldblatt Family
Foundation
Harris Family Foundation
Mr. and Mrs. Robert S. Murley

Robert T. Kocinski

Brian C. Kocinski and
Genevieve E. Hillis

August River Kolaj

Alissa and Sebastian Kolaj

Jessica Levy and Christopher Narburgh

Bevan Levy

Alex Lippert

Amy Lippert and
Erik Grossnickle

Jonathan W. Littman

The Littman Family
Foundation Inc.

Thorsten H. Lumsch, PhD^E and the S&E Staff

Usha Subramanian^E

Peggy MacNamara^E

Bess-Catherine and
James McCord

Chloe Scott Romi Marshall

Melissa Marshall

Withrow W. Meeker

Elisabeth C. Meeker

Freya and Hannah Metzger Klass

Carl R. Lindahl

Catherine E. Miller^E

Jeanette Rodriguez^E

Debra Moskovits, PhD and Jack W. Fuller^D

Dianne and Thomas Campbell

Debra Moskovits, PhD

Mr. and Mrs. Bruce W. Boyd
Beth and Harry Drucker

Native Peoples

Laura Hacker

Susan M. Neill^E

Anonymous

Lisa C. Niziolek, PhD^E and David R. Quednau^E

Alice Niziolek and Kathy
Curran

Cecilia and William O'Donnell

William O'Donnell

Bruce D. Patterson, PhD^E

Alex Dehgan and Kara Stevens

Ernst J. Pierre-Toussaint^E

Anonymous

Nigel C. Pitman, PhD^E, and Lesley S. De Souza Pitman, PhD^E

Judith and Charles Pitman

Bob Poelking

Laurie and John Poelking

Ginevra Stirling Ranney^E

Elizabeth Gordon
Jeanette Rodriguez^E

Colette Reid

Elizabeth Towell and
Nicolas Reid

Alan Resetar

Joanne and Richard Levy

Meranda D. Roberts^E

Nathan Friend

Deborah D. Ross

Mr. and Mrs. John E. Van Horn

Ben Roth

Michael Roth

Jessica^T and Steve Sarowitz

Fariba Soheil

Maggie Schneiderman^E

Jeanette Rodriguez^E

Jeff Schroder

Mark Schroder

Akiko Shinya^E

Dr. and Mrs. William
R. Parkhurst

Bill Simpson^E

Mr. and Mrs. Walter B.
Watson, Jr.

Mary Small

Diana and Tim Essert

Adrienne M. Stroup

Rebecca Carhart

Usha Subramanian^E

Monica P. Solomon

Matthew J. von Konrat^E

Anonymous

Jajuaane Walker

Troy Gore

Kate^E, Liz & Greg Webbink

Ann and Jim McKee

Dawson M. White

David White

David E. Willard

Jo Ann and Joe Paszczyk
Robert E. Stanley

Darnell Williams^E

Marquitta E. Jefferson
Nancy L. Jones

Mike Wren^E

Usha Subramanian^E

Debra F. Yepa-Pappan^E

Nathan Friend

De Yu

Lisa Ledvora

Mary Anne Zeh and Family

Christine and Tom Meyer

IN MEMORY OF

Paul Adams

Kelsey Adams and
Greg Roughton

Michael Soladoye Adeoye

Martin A. Adeoye and
Alexandra Elias

Anastasia Pappas Anton

Datin Tan Fui Lian and Dato
Dr. Robert F. Inger

Arlene Bennett

Wayne B. Bennett

Judson Bergman^T

Hefren-Tillotson, Inc.

Harvey Berman

Susan W. Mittman

Juele Blankenburg

Gail Cohen

Kathleen and Owen H. Boehm

Sara and Patrick Broaders

Rachel H.E. Bowen's Grandmother

Rachel H.E. Bowen and
Kat Connor

Barbara E. Brown

Bruce D. Patterson, PhD^E

Janice M. Cholke

Louise Ebel

Jane and Carl Cook

Anonymous

Marie and Carl P. Flick

Geoffrey A. Flick

William D. Franz

Annette M. Franz

Jack W. Fuller

Scott F. Turow and Adriane
Glazier Turow

Benjamin Galatzer-Levy

Dr. and Mrs. Robert
M. Galatzer-Levy

Gary Gutting

Anastasia Gutting

Mary E. Harland

John Hoefer and Ellen
Z. Beckley

Marion and David Jacobs

Jeffrey C. Jacobs

Conrad G. Katzenmeyer

Pat and Russ Hanson

Thomas F. Kotlarski

Carolyn Kotlarski

Kenda N. Lundgren

Kate C. Bonning

Louise and Elizabeth Manke

The Louise and Elizabeth
Manke Foundation /
Irene C. Manke

Francine and Anton Mankus

Barbara Mankus Louthan

Donald W. Mather and Bruce C. Mather

Mrs. Donald W. Mather

Hugo J. Melvoin^T

Melvoin Foundation

Robert P. Miller

Karen L. Miller

Lee Mishkin

Bryan Mishkin

Anthony G. Montag, MD

Katherine L. Griem, MD

Dominic Rodighier

Jennifer Rodighier

Kermit Roosevelt

Sean Palfrey

Shirley Roti Roti

Datin Tan Fui Lian and Dato
Dr. Robert F. Inger

Larry B. Rubin's Parents and His Cats

Larry B. Rubin

Margie and Norman Sage

Geoff Wing

Gregory Alan Schmit

Annette Schmit

Albert Shatzel

Mr. and Mrs. Robert W. Orr

Virginia Shaver

Mr. and Mrs. Jonathan F.
Shaver

Arthur B. Simon
Gene and Barbara Ridberg

H. Richard Smock
Linda J. Swanson

William T. Stanley, PhD
Kristen and Josh Jacobs
Jai Shekhawat^T

Valerie Starr
Rebecca Thomas

Duane E. Stout
Mr. and Mrs. Joseph M. Cablk
Valerie Coffey
Curtis Nekovar
Judith and William Sherry
Mr. and Mrs. Tom Sholeen
Mr. and Mrs. Gary Spencer

Ardelia Strickland
Dionna and Jae Cummings

Lynika S. Strozier
Mary Jo and Doug Basler
Butler Family Foundation
Robert Hevey, Jr. and
Constance M. Filling
Mrs. Robert C. Hyndman
Tonja Rizai Hall
Matthew J. von Konrat, PhD^E
and Genea Pitts
Sharon N. Wright

Christine Szafran
Alexandra N. Lucio^E

Grace Takata
Violet and Irv Kerbel

Hsi-Tsin Ma Tsiang
Family and Friends of Hsi-Tsin
Ma Tsiang / The Hsi-Tsin Ma
Tsiang Fund

Rebekah Uhtoff
Jason Uhtoff

James W. Van Stone
Ceres Foundation

William W. Weeks
Paul Hipple

Kimberly White
Kathleen and Dennis Klaeser

Renmin Zhao
Ying Rao and Guorong Liu

^TTrustee ^DDeceased ^EEmployee

PUBLISHER
Charles L. Katzenmeyer

EXECUTIVE EDITOR
Usha Subramanian

PROJECT MANAGER
Chandler L. Garland

CONTRIBUTORS
Mark Alvey
Monisa Ahmed
Katie Arnold
Katie Baltensperger
John Bates, PhD
Reda Brooks

Michelle Brownlee
Aimee Davis
Lesley de Souza, PhD
Trish Farrell
Adam Ferguson, PhD
Kate Golembiewski
Valentina Gómez-Bahamón
J. Kae Good Bear
Steve Goodman, PhD
Philipp R. Heck, PhD
Maggie Holcomb
Chris Jarrett
Caitlin Kearney
Jenna Lieblich

Alex Lucio
Catherine Miller
Bruce D. Patterson, PhD
Jingmai O'Connor, PhD
Ginevra S. Ranney
Rick Ree, PhD
Olivier Rieppel, PhD
Amy Rosenthal
Nina Sanders
Maggie Schneiderman
Ryan Schuessler
Stephan Spiekman, PhD
Madeline Strait
Katharine Uhrich

Corine Vriesendorp, PhD
Matt Von Konrat
Lauren Wagner
Alaka Wali
Ylanda Wilhite
Lex Winter
Mike Wren

DESIGNER
Bark Design, Chicago

PRINTER
The Fox Company,
Milwaukee, WI



Field Museum gratefully
acknowledges the generous
support it receives from the
Chicago Park District, on behalf
of the people of Chicago.

**UNITED
AIRLINES**



Official Airline of the
Field Museum

© Field Museum, all rights reserved.

PHOTO CREDITS

Cover: Beadwork – Elias Not Afraid. **Resilience:** Museum Façade – Field Museum. Lucy Hewett, Bats – Bruce Patterson, Learning Connection – Field Museum, JP Brown – Field Museum, Learning at Home – Field Museum, Amazon – Alvaro del Campo, Red Cross – Field Museum. **Discovery:** Hengduan Mountains – Deren Eaton, Rick Ree – Deren Eaton, Arapaima – Field Museum, Pyramid of the Sun – Linda M. Nicholas, Presolar Grain – Heck et al. 2020 PNAS, Post office – Gillick Family (1970), Fork-tailed Flycatcher – Valentina Gómez-Bahamón, Collections Truck – Adam Ferguson, Texas Collections team – Adam Ferguson, *Tanystropheus* – Emma Finley-Jacob, *Tanystropheus* graphic – Beat Schefold, Jingmai O'Connor – Kyle Flubacker Photography. **Impact:** Jordynn Paz, Adam Sings In The Timber, Ishbinnaache – Field Museum, *Wherein Lies the Beauty of Life* – Ben Pease, American Bison – Field Museum, TJ – Field Museum, Watercolor insects – Peggy Macnamara, Adam Ferguson – Adam Ferguson, Puppy – Adam Ferguson, Carl Cotton – Field Museum, Mojina Jinuna Mote – Ryan Schuessler, Jaki display – Field Museum. **Honor Roll:** Jingmai O'Connor – Kyle Flubacker Photography, Jane Goodall – Field Museum, Keynote Discussion – Field Museum, Members' Nights – Kyle Flubacker Photography, Michael Goulding – Michael Goulding, Evolve Lockup – Field Museum, Fleshy SUE – Field Museum (model by Blue Rhino Studios), Museum façade – Field Museum, Lynika Strozier – Kyle Flubacker Photography, Platypus – Field Museum, Youth Conservation Action – Field Museum, Kevin Feldheim – Field Museum.



GLEDISCHIA JAPONICA

あまのこ

1051634

GLEDISCHIA JAPONICA
Lithograph of Cultivated Trees of Japan.
Japanese Commission. U.S. Exposition.

While filing specimens from Asia in the John G. Searle Herbarium last year, Collections Manager Christine Niezgoda came across a beautiful watercolor print intermingled in the botany sheets. Through research in the botany archives, she discovered that the print was part of a collection of 64 lithographs made by the Japanese Commission for the World's Columbian Exposition of 1893.



ACER PURPURASCENS FRET 54. せへかじか

101703

In Memoriam



Patricia V. Barretto

The Field Museum mourns the passing of Patricia Barretto, visionary president and CEO of the Harris Theater for Music and Dance. Her keen sense of what the arts can do for a city was the impetus for innovative

partnerships she forged at the Harris—bringing companies like the English National Ballet and Bangarra Dance Theatre of Australia to Chicago.



William C. Bartholomay

William C. Bartholomay was an active supporter of the Field Museum for more than 40 years. He was a leader in the corporate and philanthropic community in Chicago, supporting cultural and

educational institutions such as Lake Forest College, his alma mater; Lincoln Park Zoo; Illinois Institute of Technology; Adler Planetarium; and the Museum of Science and Industry. Mr. Bartholomay also served as Commissioner and President of the Chicago Park District, serving under four Chicago mayors over a period of 22 years.



John A. Bross Jr.

A supporter of the Field Museum for more than 50 years, John A. Bross, Jr. was a civic leader and former vice president of the Northern Trust Company. He was a tireless volunteer and patron of

Chicago's non-profit community, serving on several boards throughout the city. He was an author specializing in Civil War history and his volunteerism impacted so many people from Chiapas, Mexico to Murray Bay, Quebec, Canada.



Frances C. Comer

Frances (Francie) C. Comer leaves an extraordinary legacy as a philanthropist, businesswoman, tireless volunteer and devoted Chicagoan. With her husband, Gary, she established the Comer Family

Foundation in 1986, which supports education, health care, environment, and culture. They founded the Gary Comer Youth Center and were honored with the naming of the Comer Children's Hospital at the University of Chicago. They were generous donors to the Field Museum for more than 40 years and Mrs. Comer was a member of the Women's Board. She leaves a legacy of generous support at several Chicago institutions including the Art Institute, Lyric Opera and the University of Chicago.



Jamee Jacobs Field

The Field Museum mourns the loss of Jamee Jacobs Field, a philanthropist, conservation leader and artist. Jamee was married to Trustee Marshall Field V for 48 years. She was a devoted grandmother to

seven and the mother of Field Museum Trustee Jamee Kane, Abigail Gerry, and Stephanie Harris. Jamee was inspired by the natural world and helped restore countless acres of natural habitats in Illinois and Florida. With her family, she generously continued the founding support of the Field family and was a member of the Museum's Women's Board for 47 years. She was the first woman to serve as board chair of the Lake Forest Country Day School and a Life Director and Governor of Lake Forest Open Lands.



Judson C. Green

Judson C. Green was elected to the Field Museum Board of Trustees in 2004 and served for seven years. Mr. Green was a leader in the business community, as President and CEO of NAVTEQ and President

of The Walt Disney Theme Parks and Resorts. He was also a philanthropist and lover of music, serving as chairman of the board of DePauw University. At DePauw, he established the Judson and Joyce Green Center for Performing Arts and launched the 21st Century Musician Initiative.

In Memoriam



Mary E. Harland

Mary E. Harland and her late husband Donald Foster Harland were passionate supporters of the Field Museum, becoming members in 1966 and, later, Founders' Council donors. They were deeply

interested in Field science and were regulars at Museum events. Mrs. Harland was also a volunteer for 24 years, serving in the Learning Center and as an Information Desk guide.



Mary P. Hines

Mary P. Hines and her late husband, Harold, were members of the Field Museum since 1964. Her support of the Field as a Benefactor and member of the Founders' Council and Edward Ayer

Society promoted the care of the Museum's global collections and the advancement of research, exhibitions, and public learning. She was especially passionate about anthropology at the Field and supported the project to take CT-scans of mummies in the Museum's collection.



Phillip W. Hummer

Phillip Wayne Hummer was a civic leader who joined the brokerage firm founded by his father, Wayne Hummer & Co., in 1954. Together with his wife Lynn, a former member of the Women's Board, the Hummers supported the

Field Museum for more than 35 years and enjoyed international travel with Museum scholars. Mr. and Mrs. Hummer joined the Founders' Council in 1997 and were members of the Anthropology Alliance. Mr. Hummer joined the board of The Field Foundation in 1987 and served as Board Chair from 1996-2004, and Life Trustee in 2015. He also was a Trustee, Life Trustee and Board Chair (1993-1996) at the Chicago History Museum.



Holly W. Madigan

Holly W. Madigan was a generous donor and Field Museum Women's Board member for more than four decades. She was an active volunteer and philanthropist in Chicago, sitting on boards and raising

support for institutions including Rush University Medical Center, Ravinia, the Smithsonian National Board, and the Family Institute at Northwestern University. A longtime resident of Winnetka, she was married to civic and business leader John W. Madigan for 57 years. Mrs. Madigan graduated from Northwestern University with degrees in Education and Spanish, and was guided by her instincts to always help others.



Kenneth Nebenzahl

Kenneth Nebenzahl was a Field Museum donor for more than 50 years. He parlayed a childhood fascination for maps and an appetite for adventure into a storied career as a Chicago rare books

dealer. He wrote numerous books about maps and cartography and with his wife, Jossy, was a committed conservationist. He helped organize the Maps exhibition at the Field Museum in 2009, and supported many Chicago organizations including the Adler Planetarium where he served as Board Chair.



Irma Parker

Irma Parker was passionate about the natural world and was a dedicated supporter of the Field Museum. She was a member of the Founders' Council and Chairman's Circle for many years, frequently attending

Founders' Frontiers programs and Loop Luncheon lectures. Through her personal contributions, Ms. Parker supported the Field for 35 years, including its science, education, and exhibitions enterprises.



John L. Simmons

The Field Museum mourns the passing of John L. Simmons, philanthropist, academic, economist, author, and public servant. John was married to Dr. Adele Simmons, a Field Museum Trustee, for more than 54

years and was a devoted father and grandfather. After a prolific career in education and policy overseas and on the East Coast, John focused on the Chicago School Reform movement, when the couple moved to Chicago. He later established a not-for-profit education consulting firm, Strategic Learning Initiatives, which achieved significant improvements in schools across the nation, especially in Chicago.



Hsi-tsin Ma Tsiang

The Field Museum lost a valued and skilled volunteer, Hsi-tsin Ma Tsiang. Mrs. Tsiang volunteered for more than 19 years in Asian Anthropology and the Marie Louise Rosenthal Library, utilizing her linguistic and

artistic talents to translate and preserve rare volumes. Her knowledge of Chinese, English, Japanese, and some Russian, along with the bookbinding skills she learned at the National Palace Museum in Taipei, Taiwan, were immensely helpful in cataloging and conserving the Library's Berthold Laufer collection.



Dorothy J. Vance

Dorothy J. Vance was a generous donor to the Field Museum for 50 years. She and her husband, Herb, supported Museum operations and the Field Museum's Fund for Science endowment

through generous personal gifts. Mrs Vance's long-time generosity helped to fund scientific research, education programs, and exhibitions at the Field Museum.



Ann S. Wolff

Ann S. Wolff was a generous supporter of the Field Museum for 54 years, first as a member and then as Founders' Council donor. Ms. Wolff enjoyed visiting the Field Museum throughout her life. Her

generosity made a great impact on the Field Museum, including its scientific discovery, education efforts, and exhibitions.



Curator Emeritus (Geology) Bertram Woodland, PhD

Bertram Woodland served the Field Museum as curator of petrology for nearly 30 years. His research on rock formations led to many scientific

advances during his career. Woodland and his wife, Mary, were instrumental in documenting the biodiversity in Homewood, IL and helping establish the Izaak Walton Preserve.

Honoring An **Extraordinary Leader**

Bill Gantz concluded his three-year term as Chair of the Board of Trustees in March 2021. We celebrate his love of the Field Museum and steadfast leadership. Bill guided the Museum through several important transitions, including the search for a new CEO and the immense challenges brought on by the COVID-19 pandemic. Early on in the *Because Earth Campaign*, Bill and his family made a leadership investment for which the Museum named the Gantz Family Collections Center. He inspires others by his generous example and we are deeply grateful for his commitment and service.

Thank you, Bill!



At the 2017 Annual Gala, hosted by the Women's Board, the Gantz Family was honored with the Marshall Field V Distinguished Leadership Award.



(Top left) Linda and Bill Gantz.



(Top right) With fellow trustees Jai Shekhawat and Dawn Solomon viewing specimens from the collections.



(Bottom) With his grandchildren on a Field Museum fossil dig in Wyoming.

Thank you!

1400 S. Lake Shore Drive
Chicago, IL 60605
fieldmuseum.org

