




ANNUAL REPORT TO DONORS

2013



The Field  
Museum



Maximizing its scientific  
influence and delivering  
rich experiences to visitors,  
The Field Museum is  
accomplishing great things.

It is in the numbers:



*Cover: A model of a giant octopus as it appears today  
(above) in the Museum's exhibition Opening the  
Vaults: Wonders of the 1893 World's Fair and in  
1893 at the World's Columbian Exposition. The  
modern-vintage combination evokes a similar feature  
in the Museum's new app. Learn more on page 22.*

**21 percent** increase in attendance at formal education programs from 2012. **3 million** people viewed *The Brain Scoop* on YouTube in its first six months at The Field Museum. **1 million** people in North America visited traveling exhibitions created by the Museum. **9,200** citations of Field Museum publications were made by scholars across the globe.







Dear friends,

The year 2013 was a good one for your Museum. After months of work by Board members and staff, we unveiled a new strategic plan for your Museum that will guide us into the next decade. Like all strategic plans, the preparation and self-scrutiny that goes into it is as valuable as the final result. We all learned a great deal in this process.

The Plan directs the Museum to grow its impact in science and public programs. We have already implemented an important step through the reorganization of the sciences. Previously organized by academic discipline (anthropology, botany, geology, zoology, and conservation ecology), the Science and Education unit is now organized by objective (collections, integrative research, and science action). The areas of study remain vibrant; and the new structure fosters interdisciplinary work—an approach necessary for the big scientific questions the Museum is best suited to tackle.

The Plan correctly identifies the visitor experience as central to our future. We must use new technologies to allow visitors to discover their own questions about our collections. We must have more and better live encounters with scientists for our visitors. And we must give our visitors a chance to go behind the scenes—an experience you already know can be transforming.

We have begun to reach Internet audiences through the YouTube channel *The Brain Scoop* and have plans to expand other online platforms like Virtual Visits to classrooms, game development, and more.

We invite you to learn more about the direction in which the Museum is going. In a very real sense, the Museum's contributions to science and education are yours: you make the work of The Field Museum possible through your generous support and guidance. We are deeply grateful to you and depend on your sustained affection for this wonderful institution.

Warm regards,



John W. Rowe  
Chairman



Richard W. Lariviere, PhD  
President and CEO

## TABLE OF CONTENTS

### SCIENCE

6 Collections

10 Integrative Research

14 Science Action

### PUBLIC ENGAGEMENT

18 Learning

22 Exhibitions

### HONOR ROLL

27 Board of Trustees

28 Donors

Conservation program  
celebrates ten years  
connecting youth with  
nature (page 16)

*Chicago, Ill.*

Innovation award  
supports coral reef  
restoration (page 13)

*Summerland Key, Fla.*

New species of  
carnivore discovered  
in The Field Museum's  
collections (page 8)

*Colombia*

Rapid inventory team  
surveys megadiverse  
Amazonian mountain  
range (page 14)

*Cordillera Escalera  
mountain range, Peru*

■ ■ ■ Within days of The Field Museum opening its doors in 1894, its scientists were launching expeditions around the planet in order to explore and understand it. That spirit of inquiry continues unabated today; and it took Museum researchers to more than thirty countries in 2013 to collect specimens, conduct research, conserve landscapes, and strengthen communities.





■ ■ ■ The value of The Field Museum's encyclopedic **collections** lies in the information they hold: information that can resolve age-old cultural riddles, connect species on the tree of life, help us understand the dynamics of diseases, or simply satisfy curiosity about our world. In 2013, the Museum accelerated its efforts to increase that value enormously by maximizing use of and access to the collections, maintaining its status as a must-visit destination for researchers, and strengthening its relevance to the world.

### Museum expands access to top collections

Collections staff members Stephanie Ware, Daniel Le, and Breezy Snyder (from left to right) scan plant specimens as part of a large-scale effort to digitize key collections across the Museum. With generous support from The Grainger Foundation, collections staff logged 250,600 records in 2013, including 100,500 images. This opening of digital access—in addition to the thousands of scientists served each year through visits and loans—is expanding the number of researchers who utilize the Museum's collections. And it is deepening their importance as a wellspring of critical information about the planet and its inhabitants.







## New species of carnivore discovered in The Field Museum's collections

The study skin below is of an olinguito, the first new species of carnivore from the Americas in thirty-five years. And it was discovered in The Field Museum's collections. In 2003, Smithsonian mammalogist Kristofer Helgren, studying The Field Museum's collection of olingo skins (raccoon-like South American mammals), noticed several that were strikingly different from the others. In August 2013, after a decade of research, he described the olinguito as a new species. The Field Museum has built one of the world's best collections of South American mammals and is an essential destination for researchers.



## Pioneering approach to collections stewardship engages cultural heritage groups

Postdoctoral Scientist Lisa Niziolek (above left) and volunteer Lani Chan analyze Chinese ceramics from the Philippines as part of the Museum's co-curation program. This emerging approach to collections stewardship involves cultural groups in the mutual care and interpretation of heritage objects. With roots in its forty-year relationship with the Maori community of New Zealand, the Museum has become a leader in co-curation. During the past two years, the Museum has developed a partnership with Chicago's Filipino community. They work with staff to catalogue and conserve objects in the Philippine collections as well as document stories about the objects' cultural use and significance.



### Botanical collections aid a criminal investigation

Research Assistant Laura Briscoe (left) holds a handful of mosses collected by a team of Field Museum botanists as part of a criminal investigation last year. In June 2011, a four-month-old baby went missing in Ludington, Michigan. A vital clue to her whereabouts was plant residue on a suspect's shoe. Investigators called in Matt von Konrat, head of botanical collections, to identify the unique combination of plant species found on the shoe and help narrow down sites where those plants could be found together. In such cases, the environment itself serves as a fingerprint, and museum collections constitute a forensic database.

250,600 objects and specimens were added to the collections database. 100,500 images were added to the collections database. 33,000 objects and specimens were loaned to researchers across the globe. 7,800 science researchers visited the collections. 14 countries were visited on collecting expeditions.



■ ■ ■ Museum-based science is at a turning point. With exploding quantities of specimen data, big-data genomics, and the integration of high-tech tools in archaeology and geoscience, it is imperative that **research** becomes more integrative and team-based than ever before in order to answer the big questions in science. The Field Museum is increasing its commitment to inquiry-driven teams and boundary-crossing research to enhance the impact of collections-based science and generate the type of discoveries that only a natural history museum can produce.

### New scientists bring energy to research

Postdoctoral Scientist Steven Leavitt discusses species boundaries with other postdoctoral scientists and graduate students. In 2013, the Museum launched an effort to attract a new corps of postdoctoral scientists. Dr. Leavitt, supported by the University of Chicago, arrived in the fall. Four more postdoctoral scientists will join him in 2014. They will study a range of topics, from urbanization to genomic analysis. These new positions—supported by the Negaunee Foundation, University of Chicago, and University of Illinois at Chicago—will add vitality to research, bridge programs, and generate new insights.

*From left to right: Steven Leavitt, Research Associate Andrew Young, Research Assistant Gracen Brilmyer, Postdoctoral Scientist Dirk Mezger, and Intern Andrea Thompson.*

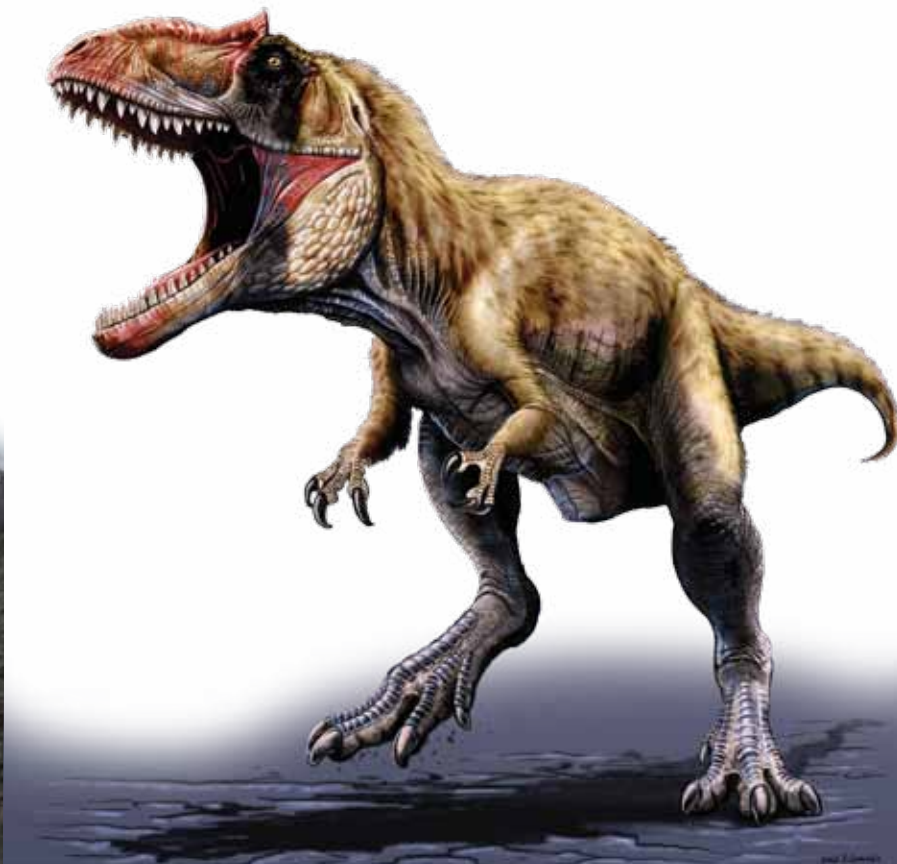






## Newly discovered dinosaur ruled the Cretaceous before *T. rex*

During an excavation in Utah (below left), Associate Curator Peter Makovicky and former Postdoctoral Scientist Lindsay Zanno, now of North Carolina State University, discovered a new species of dinosaur: *Siats meekerorum* (below right). Announced to the world last year, *Siats* was the apex predator of the mid-Cretaceous, co-existing with small-bodied tyrannosaurs. The find suggests the extinction of allosauroids, such as *Siats*, allowed tyrannosaurs to advance into the top predator niche. Scientists named the dinosaur after a cannibalistic monster from Native American mythology and the John Caldwell Meeker family for their support of paleontological research at The Field Museum.



## Amazonian tree expert joins staff through visiting scholar program

Robert O. Bass Visiting Scholar Nigel Pitman collects specimens of Amazonian trees during fieldwork in northern Peru. Dr. Pitman, a noted botanist whose research focuses on the ecology of Amazonian tree communities, joined the Museum's staff in July 2013. In October, he and an international team published a groundbreaking study in the journal *Science* about tree diversity in the Amazon. Dr. Pitman bolsters the Museum's historic strength in South American botany, brings new expertise on plant conservation, and collaborates actively with Museum scientists across the three centers.



9,200 citations of Field Museum publications were made by scholars across the globe. 615 archaeological sites were discovered. 235 journal articles were published. 110 species or other taxa were described. 105 interns and 30 resident graduate students were hosted. 90 graduate students were advised.



### Innovation award supports coral reef restoration

Curator Rüdiger Bieler (left, at right) and colleague David Vaughan of Mote Marine Laboratory observe live coral in culturing tanks at the Tropical Research Laboratory on Summerland Key, Florida. In 2013, Dr. Bieler received The Field Museum's Science Innovation Award in support of his reef restoration project. This new annual award targets projects that are groundbreaking, interdisciplinary, and impactful. Dr. Bieler is collaborating with a team from Mote to revive coral reefs by grafting live coral fragments onto dead coral boulders and monitoring the future development of the reef community. Coral reefs support approximately 40 percent of all marine life on the planet. An estimated 90 percent of indigenous coral coverage in the Florida Keys and Caribbean has been lost since the 1970s. Dr. Bieler's reef project illustrates the type of role the Museum can play in ensuring the future health of Earth.

### Fieldwork yields new shrew with an extraordinarily strong spine

The skeleton below is the type specimen (the basis for a new species description) of Thor's Hero Shrew. On a trip in 2012 to the Democratic Republic of Congo, Bill Stanley, Field Museum mammalogist and director of the Collections Center, collected a little shrew that seemed rather unspectacular—until he dissected it in Chicago and found an incredibly robust spine with interlocking vertebrae. DNA analysis helped identify it as a new species. *Scutisorex thori* is only the second-known species of hero shrew, which have spines approximately four times stronger than that of humans. It adds another piece to the puzzle of shrew evolution.



(Actual size)



- ■ ■ The Science Action Center leverages the Museum's expertise in studying the world's diversity to secure large-scale advances in conservation and community quality of life. The Action team works in the places on Earth where conservation action can protect the largest number of species (the tropics) and benefit the largest number of people (urban centers).

### Rapid inventory team surveys megadiverse Amazonian mountain range

The Rapid Inventory team, including Field Museum Senior Conservation Ecologists Douglas Stotz (white shirt) and Corine Vriesendorp (blue shirt), unloads supplies for its twenty-sixth inventory. In fall 2013, the team mounted a three-week exploration of the cultural and biological diversity in and around the Cordillera Escalera mountain range in northern Peru. The team recorded some 1,600 plant and animal species, approximately forty of them new to science. The impact of these inventories now totals millions of acres of rainforest protected from deforestation.





# 1,600



323,500 acres of high conservation value in Peru were inventoried. 232,300 people consulted the Science Action Center's online resources, including field guides. 5,200 local people were trained as citizen-scientists in Chicago and the Andes–Amazon. 40 new species were discovered during the twenty-sixth rapid inventory. 35 restoration and conservation projects were undertaken in Chicago.



### Workshop empowers Colombian women in conservation

Ecology coordinator Tyana Wachter teaches indigenous women in Colombia to create Rapid Color Guides of their medicinal and useful plants in a workshop. The workshop partner, Asociación de Mujeres Indígenas, includes members of five ethnic groups. Over two days in July 2013, participants (most of whom had never used a computer before) learned to photograph plants, download them to a computer, edit them in Photoshop, and produce completed guides. These guides are used for plant identification and to preserve indigenous knowledge about the medicinal and practical uses of the plants.



### Conservation program celebrates ten years connecting youth with nature

Since 2003, The Field Museum has been helping students on Chicago's Southeast Side and the Calumet region become knowledgeable environmental advocates in their communities. Students learn to turn science into action through a consecutive ladder of conservation education programs from fourth grade through high school, through workshops, fieldwork, and restoration projects. Each year, the program helps more than 3,700 students preserve nature in their communities (above) while building leadership skills and conducting professional development workshops for the local educators and community partners who work with these teens.

Listen to the students speak about their experiences at <http://vimeo.com/72896557>.





## Steel company returns campus to natural dune habitat

Last summer, The Field Museum and the Nature Conservancy partnered with steel manufacturer ArcelorMittal to restore seven acres of the company's campus in East Chicago to native habitat. After mowing stopped, the Blue Flag Iris (above) and other plants emerged. Recent inventories of the site documented more than fifty species of plants, including one state-endangered species and two state-threatened species. The area includes walking paths with educational signage to engage area residents.



## Students restore their own backyard to native landscape

On May 24, two hundred students from the program Calumet Is My Backyard (CIMBY) met at the Museum for the Science Summit. Students, including those above, spoke with the public about their environmental conservation work and what it means to them. CIMBY is a joint project of the Museum and Chicago Public Schools that integrates service learning and conservation action. During the 2012 to 2013 school year, students from twelve schools completed 2,350 stewardship hours and helped restore one acre of land.

*Funding for CIMBY is provided by the Ford Motor Company Fund.*

- ■ ■ The Field Museum pairs the advances it makes in integrative research and science action with its collections to create object-based **learning** opportunities for the public. The Museum is redesigning the visitor experience to make collections and science even more compelling to the new generation.

### Three million people go behind the scenes

Emily Graslíe (left) and cameraman Tom McNamara film an episode of *The Brain Scoop* featuring guest star Associate Curator Janet Voight in her laboratory at The Field Museum. In July 2013, the institution hired Ms. Graslíe, the host and writer of the educational YouTube channel *The Brain Scoop*, as its first-ever chief curiosity correspondent. *The Brain Scoop* video series shares the behind-the-scenes work of natural history museums by featuring the unique stories of the specimens that comprise these significant collections, the scientists who study them, and the exhibition-making process.

In its first six months at The Field Museum, *The Brain Scoop* produced eighteen episodes, which garnered three million new views and 62,000 additional subscribers to the channel. It boasted 192,000 total subscribers by the end of its first year. By meeting the public on its own terms—in this case, YouTube's free and accessible platform—the Museum reaches and creates relationships with a much larger, global audience: 43 percent of total views on the channel come from outside of the United States.

See *The Brain Scoop* team in action and subscribe at [youtube.com/thebrainscoop](http://youtube.com/thebrainscoop).







## Field Museum science goes live in school classrooms

Digital Learning Specialist Sara Zufan (right) discusses the importance of museum collections to scientific research with Director of Collections Bill Stanley in the program Virtual Visits from The Field. More than 1,200 students have peered inside a Field Museum laboratory from the comfort of their classroom through this program. Using a sixty-minute live web broadcast, middle and high school students travel behind the scenes and meet a Field Museum scientist. Students can see, hear, and interact with Field Museum scientists, helping connect the research at the Museum with learning in the classroom. In the 2013 season, students learned about the Illinois gray squirrel's anatomy and habitat from Mr. Stanley. In fall 2014, Virtual Visits from The Field will launch three new modules on citizen science, ecological surveying, and deep sea thermal vents.

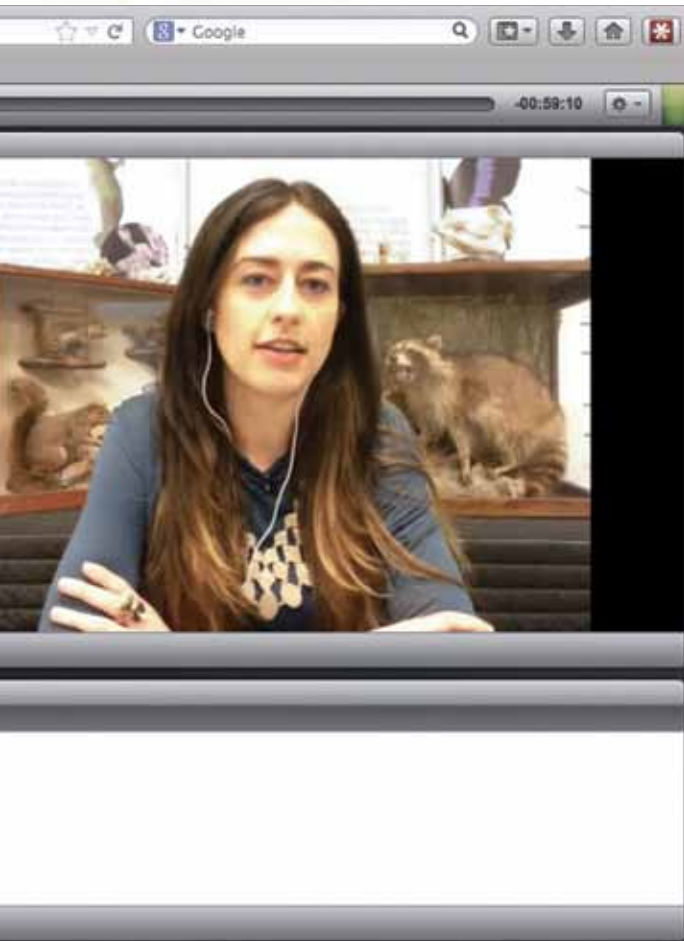
Major Sponsor: Target

Additional support provided by Chicago Blackhawks Charities



**21 percent** increase in attendance at formal education programs from 2012. **10.5 percent** increase in field trip enrollment from 2012. **3 million** people viewed *The Brain Scoop* on YouTube in its first six months at The Field Museum. **2,500** teachers brought the Museum's collections into their classrooms through the *N. W. Harris Learning Collection*, and **103,000** students learned from these materials.





### Visitors become citizen scientists in new guest experience

Visitors in Stanley Field Hall (above) record data from digital images of plants. The program Microplants, which took place over a six-week period last summer, turned more than 750 Museum visitors into scientists. They generated a staggering 20,000 recorded data measurements from tiny land plants called liverworts, which are useful in monitoring climate change. The ongoing program is jointly spearheaded by the Education Department and Science and Education in collaboration with partnering institutions. The program connects everyday citizens to Museum research and harnesses their energy and enthusiasm to accelerate the pace of scientific discovery.

Learn how to participate at [microplants.zooniverse.org](http://microplants.zooniverse.org).



### Science comes alive for visitors

Collections Assistant Lauren Smith (left) dissects small mammals during Meet a Scientist. The program re-launched in 2013 as part of a renewed focus to bring science and research conducted behind the scenes directly to visitors. Every Friday from 10 AM to 12 PM, scientists are in the Museum's halls showcasing the wonders of the collections and highlights from their research. Through these experiences, visitors see artifacts and specimens from the 99 percent of the collections not on public display. By the close of 2013, 10,500 visitors interacted with scientists during these events.

- ■ ■ The Field Museum brings science to life onsite through its **exhibitions**. In 2013, the Museum recast its exhibitions in context of the story of life on Earth. Special exhibitions leveraged Field Museum collections more than ever. The Museum is accelerating the production of its own exhibitions and expanding its traveling exhibition program to extend The Field Museum experience across the globe.

### Exhibition celebrates the founding of the Museum and its first collections

A model of a giant octopus and a taxidermic lion are just two artifacts from the World's Columbian Exposition on view in *Opening the Vaults: Wonders of the 1893 World's Fair* (Oct. 25, 2013–Sep. 7, 2014). Praised as provocative and ambitious by the *New York Times*, the exhibition tells the story of the fair and the beginning of the Museum, presenting artifacts rarely—if ever—exhibited since 1893. A fraction of the Museum's twenty-six-million-specimen collection today, these first objects continue to prompt scientific discovery 120 years later.

Learn more at <http://worldsfair.fieldmuseum.org/>.

*Opening the Vaults: Wonders of the 1893 World's Fair* was created by The Field Museum.  
Lead Sponsors: Allstate Insurance Company, Exelon, UL

### New app deepens visitor engagement with exhibitions

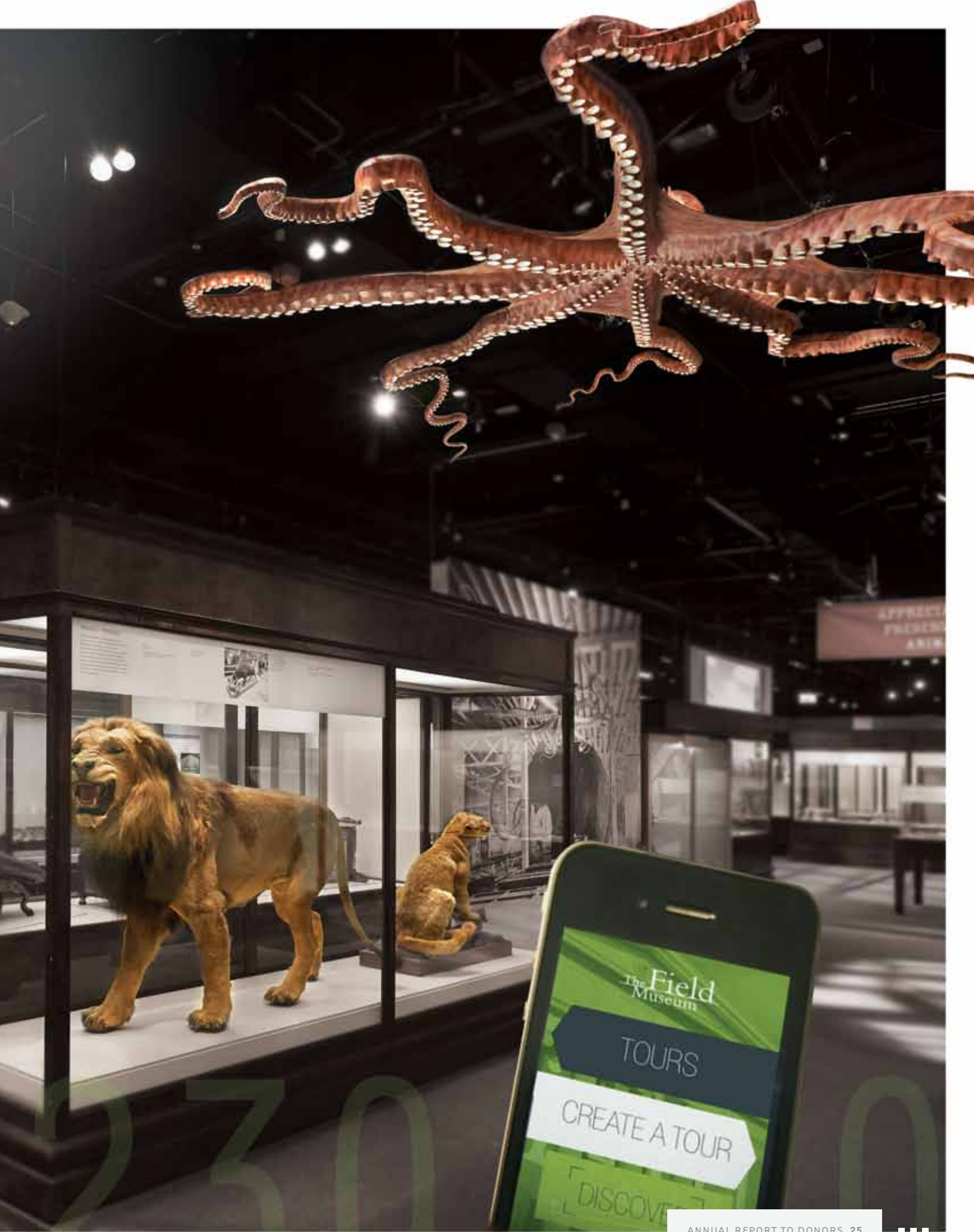
The Museum's first mobile tour application (inset) launched in October to coincide with the presentation of *Opening the Vaults: Wonders of the 1893 World's Fair*. Made possible through a grant from The Grainger Foundation, the app allows visitors to "curate" their Museum experiences by following Field-generated tours, creating custom tours on the spot, and sharing their activity through social media. Along the way, they delve into behind-the-scenes stories through augmented reality, audio clips, imagery, videos, and appearances by Field scientists. In just ten weeks, the app saw 6,500 visitor downloads. And in its first six months, the app surpassed its first year goal.

Download the app today from the App Store or Google Play Store.

### APPRECIATION & PRESERVATION: ANIMALS









### Exhibition collaboration generates record daily attendance

The larger-than-life-size model of a firefly (above) is one of several techniques used to explain the mysterious world of bioluminescence in the exhibition *Creatures of Light: Nature's Bioluminescence* (Mar. 7, 2013–Jan. 5, 2014). Through deep-sea fishes illuminating the perpetually dark depths of the oceans to glowworms dangling from the ceiling of New Zealand's famous Waitomo Caves, visitors discovered the ways light is used to attract a mate, lure unsuspecting prey, or defend against a predator. The Field Museum augmented its presentation by incorporating specimens from its collections. The show generated the highest daily exhibition attendance in recent history.

*Creatures of Light: Nature's Bioluminescence* is organized by the American Museum of Natural History, New York, in collaboration with The Field Museum and the Canadian Museum of Nature, Ottawa, Canada. Proud Sponsor: Discover



**1 million** people in North America experienced traveling exhibitions created by The Field Museum. **230,000** miles were traveled by exhibition staff to market, install, and de-install exhibitions. The **165th** Field Museum traveling exhibition opening occurred with *Nature Unleashed: Inside Natural Disasters*.



## Exhibition makes its North American debut at the Museum

*Scenes from the Stone Age: The Cave Paintings of Lascaux* (Mar. 20–Sep. 8, 2013) made its North American debut at The Field Museum. In its Chicago presentation, the exhibition featured The Field Museum’s famed Magdalenian woman (above left), who lived near Lascaux around the time the cave was in use. A forensic reconstruction of her face by renowned sculptor Elisabeth Daynès accompanied it. A UNESCO World Heritage Site, the caves feature some of the earliest examples of humans interpreting their surroundings through art. The exhibition presented exact replicas of the famous paintings, which have been closed to the public since 1963.

*This exhibition was created by The General Council of Dordogne, with support provided by the Regional Council of Aquitaine, the French Ministry of Culture and Communication, and the European Union.*



## Traveling exhibitions penetrate new markets

The Field Museum’s traveling exhibition program expanded into new markets in 2013. Highlights include rebuilding the perennially popular exhibition *Chocolate* (originally launched in 2002) for its fourth tour as well as entering three new markets with *Nature Unleashed: Inside Natural Disasters* (Calgary, Ottawa, and Salt Lake City). The program saw record success in another new market: Des Moines. At the Science Center of Iowa, *A T. rex Named Sue* was the highest attended exhibition in its history. The team also completed advanced planning for its 2014 schedule, which includes the Museum’s first European appearance with *Mammoths and Mastodons: Titans of the Ice Age* at the National Museums of Scotland.

*Chocolate and its national tour were developed by The Field Museum. This exhibition was supported, in part, by the National Science Foundation. Nature Unleashed: Inside Natural Disasters and its national tour were developed by The Field Museum. National Tour Sponsor: Allstate Insurance Company. A T. rex Named Sue was created by The Field Museum and made possible through the generosity of McDonald’s Corporation.*



... Your support ensures the vitality of The Field Museum's scientific and educational work now and in the future.

**\$8.4 million** in unrestricted support was received and pledged (the highest amount in Museum history).

**\$2.1 million** was raised by the Women's Board gala (a 75 percent increase from 2012). **3,400** donors (a 15 percent increase from 2012).

**535** volunteers contributed their time and skills.



## Board of Trustees

### Executive Committee

John W. Rowe  
*Chairman*

John A. Canning Jr. <sup>A</sup>  
*Chairman Emeritus*

Norman R. Bobins  
*Government Relations*

Dr. Richard A. Chaifetz  
*Pension*

Michael W. Ferro Jr.  
*Governance*

James S. Frank  
*Finance*

Marshall B. Front  
*Investment*

Wilbur H. Gantz III <sup>A</sup>  
*Science*

William C. Kunkler III  
*Development*

Richard W. Lariviere, PhD <sup>E</sup>  
*President and CEO*

Bobby Mehta  
*Public Programs*

James J. O'Connor Jr.  
*Facilities and Administrative Services*

Nydia Searle  
*Secretary*

Michael Tang  
*Assistant Secretary*

Mark Tebbe  
*Technology*

David M. Tolmie  
*Assistant Secretary*

Kelly R. Welsh  
*Audit*

Linda S. Wolf  
*Marketing*

James L. Alexander

Anthony K. Anderson

Susan M. Benton

Thomas L. Bernardin

Howard B. Bernick

Jean-Claude Brizard

John L. Bucksbaum

Gregory C. Case

Richard W. Colburn

Kenneth W. Coquillet

Professor Sir Peter Crane, FRS <sup>N</sup>

Robert W. Crawford Jr.

Louis T. Delgado

Roger K. Deromedi

Richard Elden

Charles M. Falcone <sup>N</sup>

Rick Fezell <sup>N</sup>

Jamee C. Field

Marshall Field V <sup>A</sup>

Janice L. Fields

Michael E. Flannery

J. Erik Fyrwald

Ronald J. Gidwitz

Ruth Ann M. Gillis

Sue Ling Gin

Robert H. Gordon <sup>A</sup>

Antonio J. Gracias

Jack M. Greenberg

Judy Greffin

Lewis S. Gruber <sup>A</sup>

Adnaan Hamid

David G. Herro

David D. Hiller <sup>A</sup>

Melody Hobson <sup>A</sup>

Terry A. Jenkins <sup>N</sup>

Todd Kaplan

Bryant L. Keil

Michael L. Keiser

Constance T. Keller <sup>A</sup>

Richard L. Keyser

Randolph R. Kurtz

Diane von Schlegell Levy

Timothy J. McCarty

W. James McNerney Jr.

Clare M. Muñana

Neil S. Novich

David C. Parry

Aurie A. Pennick

Peter B. Pond

J. B. Pritzker

Douglas P. Regan <sup>N</sup>

M. Jude Reyes

Larry D. Richman

Thomas S. Ricketts

Patrick G. Ryan Jr.

Michael J. Sacks

Jai Shekhawat

Alejandro Silva

Adele S. Simmons <sup>A</sup>

Matthew K. Simon

Maureen Dwyer Smith

Glenn F. Tilton

Everett S. Ward

Laura S. Washington

Gregory D. Wasson

Miles D. White

W. Rockwell Wirtz

Patrick Wood-Prince

Robert B. Loveman <sup>A</sup>

Cary J. Malkin

Scott P. Marks Jr.

John W. McCarter Jr.

Hugo J. Melvoin <sup>AD</sup>

James J. O'Connor Sr.

Richard J. Pigott <sup>A</sup>

Kimberly Querrey

Robert L. Wesley

William J. White

Blaine J. Yarrington

### Ex-officio Trustees

Liz Sharp <sup>N</sup>

Kevin P. Stineman <sup>N</sup>

Bryan S. Traubert

Kim White

### National Trustees

Gail K. Boudreaux

Leo F. Mullin

### Life Trustees

Mrs. T. Stanton Armour

Charles W. Benton

Judith S. Block

Willard L. Boyd <sup>A</sup>

Worley H. Clark <sup>A</sup>

James W. Compton

Frank W. Considine <sup>A</sup>

Stanton R. Cook

James A. Delaney III

Thomas E. Donnelley II

Juli P. Grainger <sup>D</sup>

Betty R. Hartman <sup>D</sup>

Wayne E. Hedien

Doris B. Holleb

Richard M. Jones

William H. Kurtis

Opposite page

From left to right: (front row) James S. Frank, Kim White, William C. Kunkler III, Ronald J. Gidwitz, Doris B. Holleb, James L. Alexander, Marshall Field V, Judith S. Block, John W. Rowe, Richard W. Lariviere, John A. Canning Jr., Dr. Richard A. Chaifetz, Richard Elden, Charles W. Benton, Clare M. Muñana, (middle row) Jack M. Greenberg, Adnaan Hamid, Laura S. Washington, Maureen Dwyer Smith, Adele S. Simmons, Richard L. Keyser, Alejandro Silva, Ruth Ann M. Gillis, Rick Fezell, Charles Falcone, Nydia Searle, Bobby Mehta, David M. Tolmie, Aurie A. Pennick, Peter B. Pond, Todd Kaplan, (back row) Kenneth W. Coquillet, Everett S. Ward, Neil S. Novich, Michael E. Flannery, Robert W. Crawford Jr., Professor Sir Peter Crane, Randolph R. Kurtz, Roger K. Deromedi, David C. Parry, Jai Shekhawat, Judy Greffin, Mark Tebbe, Robert H. Gordon, Susan M. Benton, Louis T. Delgado, and Robert B. Loveman.

<sup>T</sup> Trustee   <sup>A</sup> Edward E. Ayer Legacy Society donor   <sup>C</sup> Corporate Relations Program member

<sup>D</sup> Deceased   <sup>E</sup> Field Museum employee   <sup>N</sup> New Trustee

## The Founders' Council

*The Founders' Council is The Field Museum's premiere annual giving donor society. Member gifts of \$2,500 or more fund scientific innovation and ensure the Museum continues to inspire visitors and future scientists.*

### Steering Committee

Robert B. Loveman <sup>TA</sup>  
Chair

Kate Donaldson and Ryan Whitacre

Mrs. Noel Kaplan

Elisabeth C. Meeker

Ms. Liz Sharp <sup>N</sup>

Mr. Lanny Passaro

Mr. and Mrs. Richard H. Schnadig <sup>A</sup>

Pricilla A. (Pam) and

Douglas H. Walter

### \$100,000+

Anonymous (2)

Mr. <sup>T</sup> and Mrs. Richard Elden

Mr. <sup>T</sup> and Mrs. Michael W. Ferro Jr.,  
Merge Foundation Fund at The  
Chicago Community Foundation

Mr. <sup>T</sup> and Mrs. Michael L. Keiser

Robert M. and Diane von  
Schlegell Levy <sup>T</sup>

Mr. and Mrs. <sup>T</sup> Michael D. Searle

### \$50,000-99,999

Anonymous

Rita and John <sup>T</sup> Canning <sup>A</sup>

Mr. <sup>T</sup> and Mrs. Gregory C. Case

Dr. <sup>T</sup> and Mrs. Richard A. Chaifetz

Mr. <sup>T</sup> and Mrs. Roger K. Deromedi

Dr. <sup>N</sup> and Mrs. Charles M. Falcone

Mr. <sup>TA</sup> and Mrs. Marshall Field

Ms. Janice L. Fields <sup>T</sup> and  
Mr. Doug Wilkins

Mr. <sup>T</sup> and Mrs. James S. Frank

Wilbur <sup>T</sup> and Linda Gantz <sup>A</sup>

Mr. David G. Herro <sup>T</sup>

Mr. and Mrs. <sup>T</sup> Dennis J. Keller <sup>A</sup>

Mr. <sup>T</sup> and Mrs. Richard L. Keyser

Mr. William C. Kunkler <sup>T</sup> and  
Ms. Susan Crown

Mr. <sup>T</sup> and Mrs. Bobby Mehta

The Negaunee Foundation

The Richard H. Driehaus Charitable  
Lead Trust <sup>A</sup>

John W. <sup>T</sup> and Jeanne M. Rowe

Cari and Michael <sup>T</sup> Sacks

Mr. <sup>T</sup> and Mrs. W. Rockwell Wirtz

### \$25,000-49,999

Anonymous (2)

Mr. and Mrs. Frank L. Bauer

Mr. <sup>T</sup> and Mrs. Norman R. Bobins

Barbara <sup>E</sup> and Roger Brown

John <sup>T</sup> and Jackie Bucksbaum

The Comer Foundation Fund at  
The Chicago Community Trust

Mr. Stanton R. Cook <sup>T</sup>

Mr. <sup>T</sup> and Mrs. Kenneth W.  
Coquillette

Mr. <sup>T</sup> and Mrs. Robert W.  
Crawford Jr.

Ms. Elizabeth I. Crown and  
Mr. William Wallace

Mr. <sup>N</sup> and Mrs. Rick Fezell

Ms. Jamee C. Field <sup>T</sup> / The Edith B.  
and Lee V. Jacobs Fund No. 1

Mr. <sup>T</sup> and Mrs. Michael E. Flannery

Peggy and Steve Fossett Foundation

Christina and Ron <sup>T</sup> Gidwitz

Mr. <sup>T</sup> and Mrs. Lewis S. Gruber <sup>A</sup>

Hamid Family Foundation

Katie Hazelwood and Todd <sup>T</sup> Kaplan

Mr. David D. Hiller <sup>TA</sup>

Ms. Mellody Hobson <sup>TA</sup>

Howard B. Bernick Foundation <sup>T</sup>

J. B. <sup>T</sup> and M.K. Pritzker  
Family Foundation

Mr. <sup>N</sup> and Mrs. Terry A. Jenkins

Dr. H. Fisk Johnson

Clare Muñana <sup>T</sup>

Mr. <sup>T</sup> and Mrs. Neil S. Novich

Mr. <sup>T</sup> and Mrs. David C. Parry

Peter <sup>T</sup> and Alicia Pond

Kimberly Querrey <sup>T</sup> and  
Louis Allen Simpson

Mr. Douglas P. Regan <sup>N</sup> and  
Ms. Kathy Brock

Thomas <sup>T</sup> and Cecelia Ricketts

Lydia and Patrick <sup>T</sup> Ryan Jr.

Mr. and Ms. Louis L. Schorsch

Mr. Jai Shekhawat <sup>T</sup>

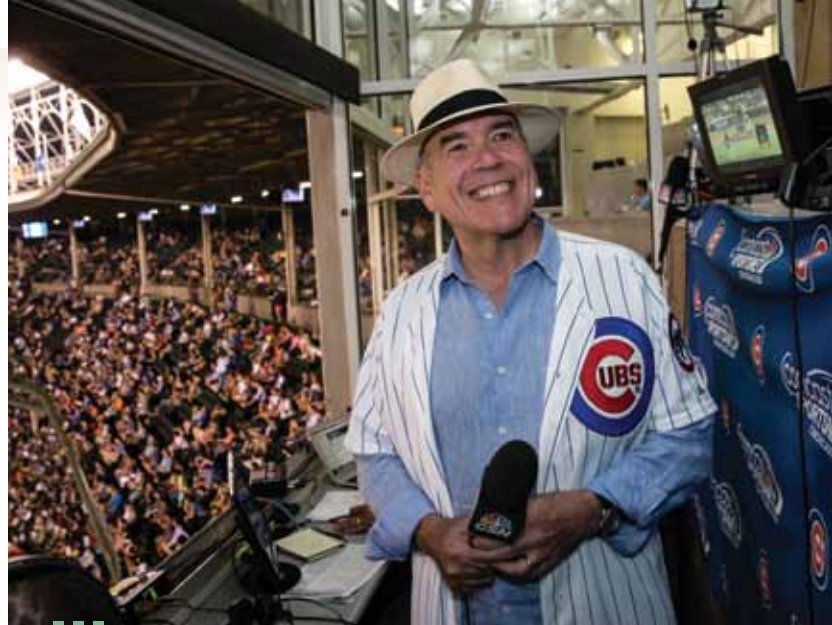
Matthew K. <sup>T</sup> and Julie Simon

Mr. <sup>T</sup> and Mrs. Mark Tebbe

Mr. <sup>T</sup> and Mrs. David M. Tolmie

Mr. <sup>T</sup> and Mrs. Gregory D. Wasson

Kim <sup>T</sup> and Miles <sup>T</sup> White



Donning a personalized Chicago Cubs jersey, President Richard W. Lariviere led 31,000 baseball fans in the seventh-inning stretch at Wrigley Field on August 19. The night concluded with an eleven-to-one win for the Cubs against the Washington Nationals. Trustee Tom Ricketts, chairman of the Cubs, made this night possible. Thank you, Tom!

Linda <sup>T</sup> and Ron Wolf

Mr. <sup>T</sup> and Mrs. Patrick Wood-Prince

### \$10,000-24,999

Anonymous (3)

Mr. <sup>T</sup> and Mrs. Tom Bernardin

Mr. and Mrs. <sup>T</sup> Philip D. Block III

Linda and Vincent Buonnano

Carol and Tom Butler

Mr. and Mrs. Theodore R. Butz /  
The Butz Foundation

Ms. Janet W. Diederichs <sup>A</sup>

Janet and Craig Duchossois

Ginny and Peter Foreman

Mr. <sup>T</sup> and Mrs. Erik Fyrwald

Gallagher Family Foundation

Ms. Ruth Ann M. Gillis <sup>T</sup>

Mr. <sup>T</sup> and Mrs. Antonio J. Gracias

Mr. <sup>T</sup> and Mrs. Jack M. Greenberg

Mr. and Mrs. <sup>T</sup> William E. Greffin

Mr. and Mrs. Matthew Harris

Mrs. Stephanie C. Harris /  
The Edith B. and Lee V. Jacobs  
Fund No. 2

Wayne E. <sup>T</sup> and Colette J. Hedien

Mrs. Harold H. Hines Jr. <sup>A</sup>

Doris B. Holleb <sup>T</sup>

Dr. and Mrs. Wayne J. Holman III

Mr. and Mrs. J. Thomas Hurvis

Mrs. Noel Kaplan

Mr. Bryant L. Keil <sup>T</sup>

Mr. and Mrs. Keith Kizziah

Ms. Nancy W. Knowles

Laurie and Rich Kracum

Mr. Randolph R. Kurtz <sup>T</sup>

Dr. <sup>TE</sup> and Mrs. Richard W. Lariviere

The Lavin Family Foundation

Mr. Robert B. <sup>T</sup> and Mrs. Gail J.  
Loveman <sup>A</sup>

Mr. and Mrs. Barry L. MacLean

Lewis and Susan Manilow

Marshall B. Front Family Charitable  
Foundation / Laura De Ferrari and  
Marshall B. Front <sup>T</sup>

Mr. <sup>T</sup> and Mrs. W. James  
McNerney Jr.

Mr. <sup>TD</sup> and Mrs. Hugo J. Melvoin <sup>A</sup>

Cathy and Bill Osborn

Ms. Aurie A. Pennick <sup>T</sup>

Mr. and Mrs. Gordon S. Prussian

Mrs. William L. Searle

Mr. <sup>T</sup> and Mrs. Alejandro Silva

Harold B. Smith

Maureen Dwyer Smith <sup>T</sup> and Edward  
Byron Smith Jr.

Tawani Foundation

Mr. D and Mrs. Theodore D.  
Tieken Jr.

Mrs. Herbert A. Vance

Ms. Nancy Hamill Winter

### \$5,000-9,999

Anonymous



Alexander and Alexander  
Attorneys at Law <sup>T</sup>  
Mrs. <sup>T</sup>T. Stanton Armour  
Mr. Harry Axelrod <sup>A</sup>  
Mr. E. M. Bakwin  
Mrs. Mary Baniak and  
Mr. Mike Baniak  
Dr. Verna L. Baughman  
Ms. Susan M. Benton <sup>T</sup>  
Mr. and Mrs. David W. Bernauer  
Dr. and Mrs. Norman L.  
Blankenship  
Rosemarie and Dean Buntrock  
Dr. George T. Caleel and Mrs.  
Rebecca Childers Caleel  
Dr. and Mrs. <sup>D</sup> Robert Wells Carton  
Mr. and Mrs. Henry T. Chandler <sup>A</sup>  
Mrs. Joyce E. Chelberg  
Mr. <sup>T</sup> and Mrs. Worley H. Clark Jr. <sup>A</sup>  
Ms. Betty L. Cleeland  
Froilan and Cecilia Concepcion  
Mr. and Mrs. James J. Conrad  
Mary and Jim Costello  
Mark and Connie <sup>D</sup> Crane  
Mr. Jim W. Croft <sup>E</sup> and Mrs.  
Marilyn Martinson Croft  
Mr. and Mrs. John T. Cunningham  
Dr. and Mrs. Tapas K. Das Gupta  
Mr. Richard A. Ditton  
Mr. and Mrs. Samuel H. Ellis  
Ms. Shirley M. Evans <sup>AD</sup>  
Mr. and Mrs. James H. Ferry III  
Mr. Andrew J. Filipowski and  
Mrs. Melissa Oliver  
Mr. and Mrs. Philip M. Friedmann  
General Packaging Products  
Ms. Abigail B. Gerry / The Edith B.  
and Lee V. Jacobs Fund No. 3  
Mr. and Mrs. Camillo Chiron  
Mr. and Mrs. James J. Glasser  
Mr. and Mrs. Richard C. Godfrey  
Richard and Mary L. Gray  
Mrs. Charles C. Haffner III  
Mr. and Mrs. William J.  
Hagenah III  
Mrs. D. Foster Harland  
Harris Family Foundation  
Pamela K. and Roger B. Hull  
Mr. and Mrs. Bruce H. Lauer  
The Lefkofsky Family Foundation  
Mrs. Deirdre LeMire  
Mr. Richard J. Loewenthal Jr.

Benjamin and Sandra Madey  
Mr. <sup>T</sup> and Mrs. Scott P. Marks Jr.  
Mr. <sup>T</sup> and Mrs. Timothy J. McCarty  
Dr. Kennon P. McKee  
Susan Mikalauski  
Goldie Wolfe Miller and Jack Miller  
Mr. <sup>T</sup> and Mrs. Leo F. Mullin  
Ms. Christine M. Myers  
Mr. and Mrs. Madhavan K. Nayar  
Mrs. Mary Jane Nordlund  
Mr. <sup>T</sup> and Mrs. James J.  
O'Connor Sr.  
Mrs. China I. Oughton  
Mr. and Mrs. Charles W. Palmer  
Lanny and Terry Passaro  
Mr. and Mrs. John W. Puth  
Mr. and Mrs. Robert Raimondi  
Ms. Helen S. Reed  
Mrs. John Shedd Reed  
Reinhardt H. & Shirley R. Jahn  
Foundation  
Mr. and Mrs. Paul A. Rubschlager  
Mr. and Mrs. Robert J. Sanborn  
Mrs. Robert E. Sargent  
Karla Scherer  
Mr. and Mrs. Gordon I. Segal /  
Segal Family Foundation  
Mr. Roger D. Shaw Jr.  
Mrs. Ann T. Shields  
Rose L. Shure <sup>A</sup>  
Mr. and Mrs. Romolo Sidoli  
Adele S. Simmons <sup>T</sup> and John L.  
Simmons <sup>A</sup>  
Ms. Elizabeth L. Snyder  
Joachim and June Staackmann  
Glenn <sup>T</sup> and Jacqueline Tilton  
Mr. Timothy A. Torok  
Mr. and Mrs. Stuart B. Townsend  
Mr. and Mrs. George S. Trees Jr.  
Mr. Howard J. Trienens  
Mr. and Mrs. Robert J. Wagner <sup>A</sup>  
Mr. and Mrs. John R. Walter  
Mr. Everett S. Ward <sup>T</sup> and  
Ms. Iris Sims  
Barbara H. West <sup>A</sup>  
Mrs. Henry P. Wheeler  
Mrs. Ann S. Wolff  
  
**\$2,500-4,999**  
Anonymous (4)  
Sharon Alister and M. Alister

Mrs. John W. Allyn <sup>D</sup> / The Allyn  
Foundation, Inc.  
Mr. and Mrs. Richard J. Almeida  
Mr. and Mrs. Thomas Anderson  
Mrs. Birute J. Apke  
Susan and Stephen Baird  
Warren L. Batts  
Mr. and Mrs. James N. Bay Jr.  
Ms. Cheryl Beebe and Mr. James A.  
Grimm  
Mr. <sup>T</sup> and Mrs. Charles W. Benton  
Mr. and Mrs. Harrington Bischof  
Dr. R. D. Bock and Dr. Renee  
Menegaz-Bock  
Mr. and Mrs. John J. Borland Jr.  
Robert and Laura Boyd  
Willard L. <sup>T</sup> and Susan K. Boyd <sup>A</sup>  
Mr. and Mrs. Richard S. Brennan  
Mr. and Mrs. Andrew W. Brown  
Mr. and Mrs. David M. Buck  
Mr. and Mrs. Randolph Burt  
Mr. and Mrs. Wiley N. Caldwell  
Mr. and Mrs. Peter R. Carney  
Joan and Tom Castino  
Ceres Foundation  
Mrs. Hammond Chaffetz  
Mr. and Mrs. John S. Chapman  
Mr. and Mrs. Paul S. Chatalas  
Kenneth and Linda Ciriacks  
Mr. James W. Compton <sup>T</sup>  
Mr. and Mrs. William A. Crane  
Mr. and Mrs. Robert O. Delaney Jr.  
Mr. and Mrs. Byram E. Dickes  
Dr. and Mrs. David G. Dodwell  
Mr. Thomas R. Doler  
Ms. Shawn M. Donnelley and  
Mr. Christopher M. Kelly  
Mr. <sup>T</sup> and Mrs. Thomas E.  
Donnelley II  
Phyllis Weil Ellis  
La and Philip Engel <sup>A</sup>  
Enivar Charitable Fund  
Mrs. Jerome L. Ettelson  
Mr. and Mrs. W. J. Farrell  
Mr. and Mrs. Robert Feitler  
Mr. Harve A. Ferrill  
Mr. and Mrs. Kevin Flynn  
Donna and Peter Freeman  
Mr. and Mrs. Joel M. Friedman  
Ms. Donna J. Godel and  
Mr. Roger E. Godel  
Mrs. Delta A. Greene

Timothy and Joyce Greening <sup>A</sup>  
Mr. and Mrs. Edward C. Haffner  
Mr. and Mrs. Dean M. Harrison  
Dr. Malcolm H. Hast <sup>A</sup>  
Beverly and Warren Hayford  
Mr. and Mrs. Thomas Z.  
Hayward Jr.  
Janet and Bob Helman  
Mr. and Mrs. Patrick J. Herbert III  
Mr. and Mrs. John L. Hines <sup>A</sup>  
Ms. Peggy Hoberg <sup>A</sup>  
Mr. and Mrs. Arthur Holzheimer  
Mr. Lawrence V. Howe Jr.  
Dr. Maria R. Hrycelak  
Ms. Lorraine M. Hurt and  
Mr. George M. Ingram  
Jill Hutchison and David Rosholt  
Mr. and Mrs. W. Bruce Johnson  
Ms. Pamela M. MacVicar Johnson  
Mr. Charles L. Katzenmeyer <sup>E</sup>  
Mr. and Mrs. Jerry M. Kelly <sup>A</sup>  
Mr. and Mrs. Sheldon E. Kent  
Mr. and Mrs. T. Eric Kilcollin  
King Family Foundation  
Mr. and Mrs. William J. Kirby  
Mr. and Mrs. Jeffrey D. Korzenik  
Mr. Richard G. Kron and  
Ms. Deborah A. Bekken <sup>E</sup>  
Dr. Robert A. Kubicka and  
Dr. Claire Smith  
Ms. Wende L. Fox Lawson and  
Mr. James Lawson  
Mr. and Mrs. Patrick Layng  
Mr. and Mrs. Elliot Lehman  
Ronna Lerner and Joel Horowitz  
Ms. Renée Logan  
Mr. and Mrs. Craig Luce  
Ms. Susan H. Luciu  
Mr. J. David Lynn  
Mr. J. Robert Lynn  
Dr. Douglas R. MacAyeal and  
Ms. Linda A. Sparks  
Cary J. <sup>T</sup> and Lisa Klimley Malkin  
Mr. and Mrs. Timothy J. Malloy  
Sandy and Jerry Manne  
Marie Marotta  
Mrs. Donna J. Matson and  
Mr. Robert W. Carpenter  
Mr. <sup>T</sup> and Mrs. John W. McCarter Jr.  
Mr. and Mrs. Archibald McClure  
Dr. William B. McDonald <sup>A</sup>  
Mr. and Mrs. John E. McGovern III

<sup>T</sup> Trustee    <sup>A</sup> Edward E. Ayer Legacy Society donor    <sup>C</sup> Corporate Relations Program member

<sup>D</sup> Deceased    <sup>E</sup> Field Museum employee    <sup>N</sup> New Trustee

## The Founders' Council cont'd

Bruce and Jane McLagan  
 Mr. and Mrs. Charles P. McQuaid  
 Erma S. Medgyesy <sup>A</sup>  
 Ms. Elisabeth C. Meeker  
 Mr. and Mrs. Richard J. Metzler  
 Mr. and Mrs. Michael A. Miles  
 Mr. Donald R. Monson and  
 Ms. Ying Hsu  
 Ms. Christina J. Norton and  
 Mr. John A. Biek  
 Mr. and Mrs. Todd J. Ohlms  
 Mrs. Virginia O'Neill  
 Mr. Joe Ortiz and Ms. Ana Justice  
 Ms. Donna L. Owens  
 Mr. and Mrs. Edward Pasquesi  
 Mr. <sup>T</sup> and Mrs. Richard J. Pigott <sup>A</sup>  
 Carl and Barbara Plochman  
 Mr. and Mrs. Philip J. Purcell III  
 James A. Radtke and Susan A. Kressin  
 Mr. Alan Resetar <sup>E</sup> and  
 Mrs. Donna Resetar <sup>A</sup>  
 Lynne King Roberts  
 Ms. Anita J. Rogers <sup>A</sup>  
 Mr. and Mrs. Jeffrey S. Ross  
 Mr. and Mrs. Norman J. Rubash  
 Dr. Myron E. Rubnitz and  
 Mrs. Susan B. Rubnitz  
 Ryan Ruskin  
 Mr. Richard M. Saklak  
 Mr. and Mrs. F. Eugene Schmitt  
 Karen and Frank Schneider  
 Mr. and Mrs. Thomas J. Schnitzer  
 Fred and Sue Schulte  
 Mr. and Mrs. Richard J. L. Senior  
 Mr. and Mrs. Stephen H. Sentoff  
 Mr. and Mrs. <sup>N</sup> Jeffrey S. Sharp  
 Bob and Charlene Shaw <sup>A</sup>  
 Pam and Tom Sheffield /  
 JS Charitable Trust  
 Mrs. Dolores Silverman  
 Mrs. Jackson W. Smart Jr.  
 Dr. James L. Smith  
 Mr. and Mrs. Benjamin  
 Smith-Donald  
 Mr. and Mrs. John B. Snyder  
 Ms. Erich Sommer  
 Mr. and Mrs. Jeffrey Sommer  
 Mr. and Mrs. Scott E. Sommer  
 Ms. Amanda A. Sonneborn and  
 Mr. Peter R. Malecki  
 Ms. Heather T. Sparling and  
 Mr. Jason Bakk

Mrs. Susan Stein  
 Liz Stiffel  
 Mr. Kevin L. Stoeckel and  
 Mrs. Emily Heisley Stoeckel  
 Mr. and Mrs. Roger W. Stone  
 Harvey and Mary Struthers  
 Ms. Judith B. Sugarman <sup>A</sup>  
 Mr. Arthur T. Susman  
 Mr. and Mrs. Robert Szalay  
 Mr. and Mrs. John W. Taylor III  
 Mr. and Mrs. Courtney D. Tedrowe  
 Mr. and Mrs. Ed Thayer  
 Mr. and Mrs. Richard L. Thomas  
 Jim and Carol Tichy  
 Dr. Michael M. Todd  
 Mr. and Mrs. William R. Voss  
 Mr. Albert Wald  
 Mr. and Mrs. Douglas H. Walter  
 Mrs. Roy I. Warshawsky  
 Professors Johannes and  
 Julia R. Weertman  
 Mr. Lon Wehrle <sup>A</sup>  
 Mr. and Mrs. Brian B. Whalen  
 Mr. Ryan B. Whitacre and  
 Ms. Katherine T. Donaldson  
 Ms. Jean A. White and  
 Ms. Helene Beisecker  
 Dr. Chester Wilson Jr.  
 Ms. Claudia L. Winkler <sup>A</sup>  
 Mr. and Mrs. Robert Zentner  
 Mark H. Zornow, MD

## Annual Fund

*The Annual Fund supports The Field Museum's people and programs. These contributions allow the Museum to meet critical needs and keep its doors open to the public 364 days a year.*

## \$1,000–2,499 (Field Explorers)

Anonymous (8)

Mr. and Mrs. A. Robert Abboud

Mr. William N. Aldeen and  
 Ms. Shelley Torres

Mr. and Mrs. Richard J. Almeida

Mr. <sup>T</sup> and Mrs. Anthony K.  
 Anderson

Mr. and Mrs. Paul Anest

Mr. Michael D. Arnold and  
 Ms. Monica Wallace

Ms. Ann Griffith Ash

Ms. Yvette Ault

Mrs. Laura Bader and  
 Mr. Victor Sturm

Mr. and Mrs. David Baier

Mr. and Mrs. Donald A. Belgrad

Mr. and Mrs. Andrew K. Block

Mr. James A. Brainer

Mr. and Mrs. Robert B. Breisblatt

Mr. Jean-Claude Brizard <sup>T</sup> and  
 Dr. Brooke Stafford-Brizard

Nancy L. and William M. Brown

Mr. and Mrs. Nathan A. Brown

Samuel and Beth Buchsbaum

Dr. Sharon S. Burke

Mr. and Mrs. John D. Burns II

Mr. and Mrs. Clark Burrus

Ms. Jeanne C. Busch

Mr. and Mrs. Philip A. Canfield

Mr. and Mrs. Gregory P. Casimer

Mrs. Silas S. Cathcart

Laura Biddle Clarke

Mr. and Mrs. John C. Colman

Ms. Nancy Corral

Ms. Christine Courtneage

Mr. Justin Daab and  
 Ms. Lois Morrison

Ms. Rebecca Dauparas

Mr. and Mrs. Allen R. Davies

Mr. and Mrs. William L. Davis III

Lori and Bill Dawson

Mr. and Mrs. Mark D. Dawson

Ms. Diana L. DeBoy

Ms. Nancy Dehmlow

Mr. and Mrs. Thomas Delahunty

Mr. and Mrs. David Devonshire

Dr. Richard A. Domanik and  
 Dr. Janice Y. Domanik

Dr. Naomi S. Donnelley

Mrs. Glenda W. Duncan

Mr. and Mrs. Timothy Earle

Ms. Erika E. Erich

Mr. and Mrs. Eugene F. Fama

Mr. and Mrs. William Farley

Mary and Bruce Feay <sup>A</sup>

Mr. Edward T. Fishwick and  
 Ms. Mary M. Case

Mr. Eric Flint and  
 Mrs. Lucille Robbins

Sonia and Bill Florian

Joanne Benazzi Friedland

Mr. Gary Friedlander

Mr. and Mrs. Timothy D. Friedman

Mr. and Mrs. Maurice F. Fulton

Mr. and Mrs. Christopher O. Glass

Ms. Susan Goldschmidt and  
 Mr. Miles Taub

Mr. John C. Goodall Jr.

Mr. and Mrs. Arthur Gooding

Mr. and Mrs. David S. Harrington

Mr. and Mrs. Raymond V. Hartman

Mr. and Mrs. Jeffrey R. Havsy

Ms. Cynthia S. Heusing and  
 Mr. David H. Kistenbroker

Mr. and Mrs. Mark C. Hibbard

Mr. and Mrs. Thomas H. Hodges

Mr. and Mrs. Charles F. Hofbauer

Mr. and Mrs. Richard C.  
 Hoffman Jr.

Mr. and Mrs. Richard M. Holm

Ms. Janice Honigberg

Mrs. Nancy A. Horner

Mr. and Mrs. Peter Huizenga

Tex and Susan Hull

Dr. and Mrs. James D. Hurst

Mr. Matthew Isoda and Ms. Brigid  
 M. Maniates Isoda

Mr. and Mrs. Fruman Jacobson

Ms. Deborah Johnson and  
 Ms. Angela Nesci

Mr. and Mrs. James M. Johnson

Mrs. Samuel C. Johnson II

Mr. and Mrs. <sup>E</sup> Christopher  
 Jorgensen

Mr. and Mrs. Robert Judelson

Linda M. Jung

Mr. and Mrs. Jordan L. Kaplan  
 Ms. Janet Kelly  
 Mr. and Mrs. Eric Kennedy  
 Mr. and Mrs. John E. Kirkpatrick  
 Mr. and Mrs. Lester B. Knight III  
 Mr. and Mrs. Norman A. Koglin  
 Mr. William T. W. Kwan  
 Mr. and Mrs. Lee Lane  
 Ms. Cathy G. Lazaroff  
 Mr. and Mrs. Michael P. Leahy  
 Mr. Sheldon L. Leibowitz  
 Mr. and Mrs. John G. Levi  
 Mrs. Robert R. Lipsky  
 Mrs. Laura Litten and  
 Mr. Andre Leduc  
 Mr. Barry A. Malkin and  
 Ms. Jodi Block  
 Mrs. Charlotte Marks  
 Ms. Jamie C. Marshall and  
 Mr. Richard Sobkowiak  
 Ms. Michelle L. Maton and  
 Mr. Michael C. Schaeffer  
 Mr. and Mrs. Frank D. Mayer Jr.  
 Heidi and Gregory Mayer  
 Bess Catherine McCord and  
 James McCord  
 Mr. and Mrs. Ronald McKee  
 Mr. and Mrs. Andrew J.  
 McKenna Sr.  
 Mr. and Mrs. John A. McKenna  
 Mrs. Leslie Gantz McLamore and  
 Mr. Scott McLamore  
 Mr. and Mrs. John McLean  
 Mr. Ian McNish  
 Ms. Marietta McPike  
 Dr. Steven A. Melnyk  
 Ms. Pamela G. Meyer  
 Ms. Nancy M. Michael  
 Mr. and Mrs. Robert R. Moeller<sup>A</sup>  
 Mr. and Mrs. Carl E. Moore Jr.  
 Ms. Mary K. Moreland and  
 Mr. Daniel T. Jenks  
 Mr. Robert Moyer and  
 Ms. Anita Nagler  
 John C. and Victoria Martin Myers  
 Ms. Mary Nalbandian  
 Mr. and Mrs. Kenneth Nebenzahl  
 Mr. and Mrs. John Doane Nichols  
 Ms. Lora Nickels<sup>E</sup> and  
 Mr. Thomas Tague  
 Mr. and Mrs. John P. Nielsen<sup>A</sup>  
 Mr.<sup>T</sup> and Mrs. James J.  
 O'Connor Jr.

Ms. Kristen M. Olson  
 Mr. Francisco Ortiz  
 Ms. Sarah R. Packard  
 Ms. Elizabeth Parker and  
 Mr. Keith Crow  
 Mr. James D. Parsons  
 Robert K. Parsons and  
 Victoria J. Herget  
 Mr. and Mrs. Joseph Paszczyk<sup>A</sup>  
 Ari and Zoe Paxinos  
 Mr. and Mrs. Robert P. Perkaus Jr.  
 Mr. and Mrs. John F. Podjasek III  
 Mr. Michael P. Polsky  
 Mr. Irwin Press  
 Mrs. Mary F. Quednau  
 Mr. and Ms. George A. Ranney Jr.  
 Nancy and Warren Rasmussen  
 Mr. and Mrs. Stephen L. Ritchie  
 Roberts Family Foundation  
 Mr. and Mrs. Donald E. Rocap  
 Mr. and Mrs. Phillip B. Rooney  
 Mr. and Mrs. Richard M. Rosenberg  
 Mr. and Mrs. Harold Rosenson  
 Mr. Richard R. Rosin and  
 Ms. Anne McPhee  
 Mrs. Doris D. Roskin  
 Mr. and Mrs. Alexander L. Ross  
 Mr. and Mrs. Edward W. Ross  
 Mr. and Mrs. John W. Rutledge  
 Mr. and Mrs. Patrick G. Ryan  
 Mrs. Rachel Ryan  
 Jessica and Steve Sarowitz  
 Ms. Barbara M. Schleck and  
 Mr. Gary M. Ropski  
 Ms. Carol H. Schneider  
 Mr. and Mrs. Alan Sebulsky  
 Mr. and Mrs. David Sensibar  
 Mr. Robert M. Shafis<sup>E</sup> and  
 Ms. Carol A. Erickson  
 Mrs. Victoria M. Skala  
 Mr. and Mrs. Walter S. Snodell III  
 Mr. and Mrs. Charles H. Solberg Jr.  
 The Solot Family Foundation  
 Mr. and Mrs. James Stanczak  
 Mr. and Mrs. Stanley M. Stevens  
 Ms. Marilyn Stewart  
 James and Pamela Stola  
 Mr. and Mrs. Ivan G. Strauss  
 Mr. and Mrs. Robert D. Stuart Jr.  
 Mr. and Mrs. Bert O. Sullivan Jr.

Mr. and Mrs. Blake H. Swift  
 Mr. and Mrs. Thomas Tisbo  
 Mrs. and Mr. Mary Beth Turek  
 Mr. and Mrs. Richard Uihlein  
 Mr. Jeffrey A. Urbina and  
 Ms. Gaye Lynn Hill  
 Mr. and Mrs. Thomas Veldman  
 Mr. John P. Ver Bockel and  
 Ms. Kathleen E. Carbonara  
 Mr. and Mrs. Daniel J. Walsh  
 Ms. Jeri L. Webb<sup>E</sup>  
 Mr. and Mrs. Robert G. Weiss  
 Mr. Bartholomew Weldon and  
 Ms. Deborah Zroka  
 Mr. Kelly R. Welsh<sup>T</sup> and  
 Ms. Ellen S. Alberding  
 Ms. Stacey Weltmer  
 Mr. William J. White<sup>T</sup>  
 Mr. and Mrs. Raymon Whitney  
 Mr. and Mrs. Paul R. Wiggin  
 Dr. David E. Willard<sup>E</sup>  
 Mr. Lawrence J. and  
 Mrs. Margaret V. Witry<sup>A</sup>  
 Mr. and Mrs. William E. Wolf  
 Mr. and Mrs. Tom Wotovich  
 Mr. and Mrs. Joseph Zajac  
 Mr. and Mrs. Dennis M. Zaslavsky  
 Ms. Tara Zientek

#### **\$500–999 (Field Naturalists)**

Anonymous (3)  
 Mr. and Mrs. John Aalbrechtse  
 Mr. and Mrs. Arthur Adams  
 Barbara and Steven Adelman<sup>A</sup>  
 Ms. Eva Adler and Ms. Lorica Adler  
 Mrs. Roberta R. Allen  
 Dr. and Mrs. Dominic J. Allocco  
 Darrell and Deb Anderson  
 Mrs. Patricia S. Anderson  
 Mr. Thomas A. Andreoli and  
 Ms. Anne W. Mitchell  
 Mr. and Mrs. S. Frank Arado Jr.  
 Mr. and Mrs. Daniel Arntzen  
 Dr. and Mrs. Anthony J. Ascioti  
 Ms. Andrea Atlask and  
 Mr. Kenneth Kuehule  
 Ms. Kaye B. Aurigemma  
 Mr. Rodney Austin  
 Mrs. Juliette F. Bacon  
 Richard P. Bail and Janice G. Bail  
 Ms. Joy L. Bailey  
 Mr. and Mrs. Ryan Balber  
 Ms. Katherine M. Barnash  
 Carlo Basile and Kim Basile  
 Ms. Sandra Bass  
 Mr. and Mrs. Douglas D. Baum  
 Mr. and Mrs. Eric Beaumont  
 Mr. and Mrs. Philip S. Beck  
 Mr. and Mrs. Robert D. Becker<sup>A</sup>  
 Mr. Matthew Benoit and  
 Dr. Cathleen Dohrn  
 Mr. and Mrs. Robert L. Berner Jr.  
 Mr. and Mrs. Charles E. Bidwell  
 Mr. Thomas R. Bland  
 Mr. and Mrs. John C. Blomgren  
 Nancy and George H. Bodeen  
 Mr. Peter Bowe and  
 Ms. Barbara Stewart  
 Mr. Keith D. Bowersox  
 Mr. and Mrs. Scott Brady  
 Mr. Richard T. Brannegan<sup>A</sup>  
 Mr. and Mrs. Michael Bresolin  
 Ms. Loral Briggs and  
 Mr. Tim Scale  
 Mr. John A. Bross Jr.  
 Mr. and Mrs. Steven L. Brown  
 Mr. and Mrs. Jackson Brunsting  
 Mrs. Ellen S. Buchen  
 Mr. and Mrs. Joshua T. Buchman  
 Mr. and Mrs. Thomas Buck  
 Mrs. Elizabeth Buker  
 Mr. and Mrs. Joshua S. Burden  
 Lenore and Douglas Cameron  
 Mr. and Mrs. Walter R. Carlson  
 Mr. and Mrs. Robert E. Carroll  
 Mr. and Mrs. Frantz R. Cartright  
 Mr. and Mrs. Donald Cassil  
 Mrs. Alice G. Childs  
 Ms. Jacqueline Chosnek and  
 Mr. David M. Williams  
 Mr. and Mrs. Howard Chun  
 Mr. Nathaniel P. Clapp and  
 Ms. Sarah Dietz  
 Mr. and Mrs. James A. Clark  
 Mr. Ray Colebaugh  
 Mr. John T. Coletta  
 Mr. and Mrs. Mercer Cook  
 Mr. George M. Covington  
 Mr. William D. Cox Jr.  
 Ms. Noreen Cohan and  
 Mr. Donald Simmonds

<sup>T</sup> Trustee   <sup>A</sup> Edward E. Ayer Legacy Society donor   <sup>C</sup> Corporate Relations Program member

<sup>D</sup> Deceased   <sup>E</sup> Field Museum employee   <sup>N</sup> New Trustee



## Annual Fund cont'd

Mr. Guy R. Crane  
 Professor<sup>N</sup> and Lady Peter R. Crane  
 Mr. and Mrs. Bruce Crown  
 The Honorable Barbara Flynn Currie  
 Mr. Charles F. Custer  
 Robert and Cathy Daly  
 Mrs. Kenneth W. Dam  
 Mr. William R. Darman and Ms. Maria Mau  
 Michael Daugherty  
 Dr. and Mrs. Lloyd Davidson  
 Ms. Rebecca Davidson<sup>A</sup>  
 Kent and Susanne Davis  
 Ms. Patricia R. Davis  
 Mr. and Mrs. Randall Davis  
 Louis<sup>T</sup> and Margarette Delgado  
 Ms. Katherine H. Deming and Mr. Joseph Cavanaugh  
 Mr. and Mrs. William E. Derrah III  
 Owen Deutsch and Rona Talcott  
 Mr. and Mrs. Blair C. Dickinson  
 Ms. Leonora Dickson  
 Mr. and Mrs. James S. DiMatteo  
 Mr. and Mrs. Thomas W. Doddridge  
 Dr. Julie A. Dodds and Dr. William G. Humphrey  
 Mr. and Mrs. David W. Dodson  
 Mr. and Mrs. Kevin M. Doherty  
 Ken and Karen Dort  
 Mr. Charles R. Droege and Ms. Julie Wroblewski  
 Mr. and Mrs. Harvey Dulin  
 Ms. Diana L. Duncan<sup>E</sup>  
 Ms. Helen M. Dunlap  
 Mr. and Mrs. Thomas E. Durica  
 Mark G. Egan and Katherine Z. Egan  
 Ms. Linda L. Egebrecht<sup>A</sup>  
 Ms. Cherelynn A. Elliott  
 Mr. Douglas R. Elliott  
 Mr. and Mrs. Paul M. Embree  
 Mr. and Mrs. Fabio Fabbri<sup>A</sup>  
 Mr. and Mrs. John F. Faulhaber  
 Mr. and Mrs. Alexander H. Faurot  
 Mrs. Joan L. Fencil  
 Mr. and Mrs. Raymond R. Fessler  
 Mr. and Mrs. Cameron Findlay  
 Mr. and Mrs. Kenneth Fischl  
 Mr. and Mrs. William D. Folland

Mr. and Mrs. James E. Forrest  
 Mr. and Mrs. Henry S. Frank  
 Mr. and Mrs. William J. Friend  
 Mr. John F. Fyfe and Ms. Joan M. Greco  
 Ms. Frances Gale and Ms. Virginia Gale  
 Mr. and Mrs. J. Patrick Gallagher Jr.  
 Ms. Jeanne K. Gang and Mr. Mark Schendel  
 Mr. Kristopher Garcia and Mrs. Theresa Garcia-Lechocki  
 Mr. and Mrs. Gary E. Gardner  
 Dr. and Mrs. John S. Garvin  
 Mr. and Mrs. Isak V. Gerson  
 Mr. and Mrs. Kanwal Ghaey  
 Mrs. Mary Jane Gibbs  
 Mr. and Mrs. David A. Gillam  
 Dr. Chris Godell  
 Mr. and Mrs. John A. Goodman  
 Mr. and Mrs. James P. Gorter  
 Ms. Patricia A. Gowland  
 Mr. and Mrs. Chris Grams  
 Ms. Karen L. Granda and Mr. John S. Mrowiec  
 Mr. and Mrs. Richard Gray  
 Ms. Catherine A. Griffin  
 Mr. Larry Grote  
 Dr. Rolf M. Gunnar  
 Mr. and Mrs. John A. Hagenah  
 Ms. Elizabeth W. Halpern  
 Mr. and Mrs. M. Hill Hammock  
 Mr. and Mrs. Joel L. Handelman  
 Dolores K. Hanna  
 Mr. and Mrs. Mike Harms  
 Ms. Alice E. Harper  
 Ms. Patricia A. Harper  
 Ms. Katherine P. Harris and Mr. Robert S. Jendra  
 Mr. and Mrs. Brent Hawkins  
 Mr. and Mrs. Thomas S. Hebda  
 Ms. Joyce E. Heidemann  
 Mr. and Mrs. David J. Height  
 Mr. and Mrs. John Henderson  
 Mr. and Mrs. James P. Hepp  
 Mr. and Mrs. Scott E. Hertenstein  
 Mr. and Mrs. Robert M. Hickey  
 Melissa Hilton and Jonathan Perman  
 Mr. and Mrs. C. Clarkson Hine  
 Adrienne and Robert Hirsch

Mr. and Mrs. B. Peter Hofmann  
 Mr. and Mrs. Thomas J. Hope  
 Mr. and Mrs. William S. Hoppe  
 Mr. and Mrs. Michael Huchel  
 Ms. Laurie Huget and Mr. Werner Huget  
 Mrs. Diane S. Humphrey  
 Mr. and Mrs. G. Cleveland Hunt Jr.  
 Ms. Patricia J. Hurley  
 Mr. and Mrs. Justin Huscher  
 Mr. Steve M. Isaac and Ms. Judy Olds  
 Mr. and Mrs. Andrew M. Jarosz  
 Mr. and Mrs. Sidney F. Jarrow  
 Mr. and Mrs. Jerald L. Johnson  
 Mr. and Mrs. Brian Jones  
 Mr. and Mrs. George T. Jones Jr.  
 Mr. and Mrs. Tom F. Kacprowicz  
 Mrs. Karen A. Kammer  
 Ms. Verla Kasmerchak  
 Mr. and Mrs. Richard W. Kasperon  
 Ms. Anne Kavanagh and Mr. Terry Smith  
 Ms. Katharine Kelly  
 Mr. Christopher M. Kennedy  
 Mr. and Mrs. Robert A. Kilinskis  
 Mr. and Mrs. Thomas L. Kittle-Kamp

Dr. and Mrs. Jay H. Kleiman  
 Mr. Barry Kohl  
 Mr. and Mrs. Glenn A. Kolososki  
 Mrs. Alberta Kosik  
 Ms. Patricia Kosmerl  
 Mr. and Mrs. Martin J. Kozak  
 Mr. Paul R. Kressin and Ms. Kay Lee  
 Mr. and Mrs. Stuart Kriegermeier  
 Emerson and Martha Lacey  
 Mr. and Mrs. Alan J. Lacy  
 Mr. James R. Lancaster  
 Mr. and Mrs. Dirk B. Landis  
 Mr. and Mrs. William W. Lane  
 Mr. and Mrs. David R. Larson  
 Mrs. Winfred M. Leaf  
 Ms. Leslie A. Lee  
 Mr. and Mrs. Gary Lessenberry  
 Bonita and Bob Levin  
 Ms. Carolyn S. Levin  
 Mr. and Mrs. Donald Lewis  
 Mr. and Mrs. Robert E. Lindgren  
 Mr. Charles N. Lindsey and Mr. Zikri Yusof  
 Mr. and Mrs. Bert H. Lindstrom  
 Mr. and Mrs. Mark A. Livengood  
 Charlene and Gary MacDougall  
 Mr. and Mrs. Bernard A. Mack Jr.<sup>A</sup>  
 Mr. and Mrs. Craig A. Mackrides  
 Mr. and Mrs. C. Patrick MacLeod  
 Ms. Charlene Marcus  
 Ms. Carmen Maso  
 Mr. and Mrs. Richard P. Mayer  
 Mr. and Mrs. James McClelland  
 Mrs. Withrow W. Meeker  
 Mr. and Mrs. Robert C. Merrick  
 Ms. Barbara Merrill  
 Mr. and Mrs. Scott D. Meyer  
 Dr. and Mrs. Ernest E. Mhoon Jr.  
 Ms. Lee S. Mickus  
 Mr. and Mrs. Jan Miecznikowski  
 Mr. and Mrs. Michael E. Mikolajczyk  
 Dr. and Mrs. Robert P. Miller  
 Sara and Tyler Mongerson  
 Dr. Anthony G. Montag and Dr. Katherine L. Griem  
 Mr. and Mrs. Leon W. Moore  
 Mr. and Mrs. Reginald Moore  
 Mr. and Mrs. George and Isela Morales



In 2013, The Field Museum established the Field LOYALTY Club to celebrate individuals who have supported the Museum for twenty or more years. The Museum celebrates the 1,600 members of its inaugural class. Thank you!

Mr. Peter Moran  
 Mr. Daniel N. Morgan  
 Mr. and Mrs. John A. Morris  
 Mr. and Mrs. David W. Mortara  
 Ms. Helga E. Muench  
 Ms. Pamela L. Murphy  
 Mr. and Mrs. James Murray  
 Ms. Carolyn E. Nasheim  
 Mr. and Mrs. Joseph Navarre  
 Mr. and Mrs. Neil C. Nelson  
 Mr. and Mrs. Robert J. Nelson  
 Mr. and Mrs. Jonathan B. Newcomb  
 Ms. Marjorie Newman  
 Mr. Jim H. Niehoff and  
 Mrs. Jolie R. Macier  
 Mr. and Mrs. Ed Nienow  
 Ms. Anne Nobles and  
 Mr. David L. Johnson  
 Mr. and Mrs. Dele Ogunleye  
 Mrs. Alexandra O'Neill  
 Mr. Robert I. Osterberg  
 Mr. David Otto  
 Ms. Phyllis Parish  
 Mr. and Mrs. Robert D. Parks  
 Mr. and Mrs. Homi B. Patel  
 Mr. and Mrs. Paul R. Payne  
 Mr. and Mrs. William B. Pearce  
 Mr. S. James Perlow and  
 Ms. Sandra J. Allen  
 Mr. and Mrs. Dan Peterson  
 Mr. Verne Peterson and  
 Ms. Julie Lipkin  
 Dr. David T. Petty  
 Mrs. Elizabeth B. Phillips  
 Mr. and Mrs. Burt  
 Pickard-Richardson  
 Ernst Pierre-Toussaint <sup>E</sup>  
 Mr. and Mrs. Louis R. Pignotti Sr.  
 Mr. John Pincetti  
 Ms. Nancy Plax and  
 Mr. Steven Schwartzman  
 Mrs. John W. Pocock <sup>A</sup>  
 Mr. and Mrs. Charles S. Potter Jr.  
 Mr. and Mrs. Keith Powell  
 Mr. and Mrs. John B. Priest  
 Ms. Lynne Rauscher-Davoust  
 Dr. and Mrs. Matthew J. Raymond  
 Mr. and Mrs. David Reese  
 Mrs. Sheila T. Reynolds <sup>A</sup>  
 Mr. Richard W. Richardson

Mr. <sup>T</sup> and Mrs. Larry D. Richman  
 Ms. Maureen Riordan  
 Ms. Janice E. Rodgers  
 Mr. Erik Roffelsen and  
 Ms. Nelleke Peters  
 Mr. Howard J. Romanek and  
 Mr. Irwin Romanek  
 Rose Houston  
 Charitable Foundation  
 Mr. and Mrs. Morton Rosen  
 Mr. and Mrs. Robert J. Ross  
 Mr. Ted Ross and Ms. Kathie Ayres  
 Mrs. Donald I. Roth  
 Mrs. Elizabeth D. Rothermel  
 Ms. Lynn M. Rubino  
 Mr. and Mrs. David A. Ruth  
 Mr. George Rykowski and  
 Ms. Silvia Schmid  
 Mr. D. P. Sager  
 Dr. and Mrs. Paul W. Saltzman  
 Ms. Maureen Sauser  
 Ms. Cynthia M. Scalzo and  
 Dr. Henry Brown  
 Mr. and Mrs. Morton O. Schapiro  
 Mrs. Lawrence K. Schnadig  
 Mr. and Mrs. Thomas J. Schultz  
 Ms. Thelma L. Schwartz <sup>A</sup>  
 Mrs. Marilyn L. Schweitzer and  
 Mr. Michael A. Firman  
 Mr. and Mrs. Daniel Schweller  
 Mr. and Mrs. G. Curtiss Shaffer <sup>A</sup>  
 Mr. and Mrs. Jonathan Shaver  
 Ms. Kate M. Sheehy  
 Alissa and Jonathan Shulkin  
 Mr. and Mrs. Michael Simpson  
 Ms. Maureen M. Slavin  
 Carrie Smaroff and  
 Duke G. Smaroff  
 Mr. and Mrs. Robert W. Smolen  
 Mr. and Mrs. James Snook  
 Mr. and Mrs. Dan W. Snyder Jr.  
 Mr. and Mrs. Ron Sonenthal  
 Mr. Tom Sourlis  
 Mr. and Mrs. Neele E. Stearns Jr.  
 Mr. and Mrs. Leon C. Stecher  
 Mr. Alfred E. Steinhaus  
 Mr. <sup>N</sup> and Mrs. Kevin Stineman  
 Mr. and Mrs. Theodore A. Struve  
 Dr. Susan Suntay and  
 Ms. Stephanie Suntay  
 Dr. and Mrs. Joseph W. Szokol

Mr. and Mrs. Gregory T. Taylor  
 Mr. and Mrs. Ronald Tesarik  
 Mr. and Mrs. Nick Thomas  
 Monica and Kevin Thompson  
 Mr. and Mrs. Raymond C. Tower  
 Ms. Sally L. TreKell  
 Ms. Mary Trowbridge and  
 Mr. William West  
 Mr. J. Michael Trumbold  
 Mr. and Mrs. John P. Tubutis  
 Mr. and Mrs. James A. Tuchler  
 Mr. Scott F. Turow  
 Mr. Peter M. Vale  
 Mr. and Mrs. Craig D. Vallorano  
 Mr. and Mrs. J. V. Van Cura Jr.  
 Mr. and Mrs. John E. Van Horn  
 Mr. Shawn K. VanDerziel <sup>E</sup> and  
 Mr. Jay Clarke  
 Mr. Ryan VanHolsbeke  
 Stephen J. Vivian and Tia M. Rains  
 Mr. Thomas W. Vogelsang and  
 Ms. Kathleen M. Moran  
 Mrs. Ann D. Wagner  
 Ms. Belle Waldfogel and  
 Ms. Georgean Goldenberg  
 Mr. and Mrs. Eric D. Wanger  
 Ms. Therese L. Wareham  
 Mrs. Hempstead Washburne  
 Mr. and Mrs. Gary W. Watt  
 Mr. and Mrs. K. Jay Weaver  
 Mrs. Carolyn H. Weinstein  
 Mary Weisman and James Weisman  
 Ms. Jane Wells and  
 Mr. Burton C. Ferrini  
 Mr. and Mrs. Kalman Wenig  
 Mrs. Madelin M. Wexler  
 Dr. Gary Wheeler  
 Mrs. Dorothy B. White <sup>AD</sup>  
 Dr. Wendall W. Wilson  
 Mr. and Mrs. Gregory Wintroub  
 Mr. Michael J. Wisnowski and  
 Ms. Dawn I. Walker  
 Ms. Melanie R. Wojtulewicz  
 Mr. and Mrs. J. Nelson Wood  
 David and Kay Wulf  
 Mrs. Nancy Wulfers  
 Mr. Theodore M. Wynnichenko and  
 Ms. Laura Hill  
 Ms. Jane Yakushiji  
 Mr. Kenneth A. Youga  
 Mrs. George B. Young

Dr. and Mrs. Gerald D. Young Jr.  
 Mr. and Mrs. Steven J. Young  
 Mr. and Mrs. Phillip C. Zarcone  
 Mr. and Mrs. Bruce Ziegler  
 Mr. and Mrs. Earl Zingraf  
  
**\$250-499 (Field Adventurers)**  
 Anonymous (12)  
 Mr. Roger S. Adamek  
 Mr. Cyrus H. Adams  
 Mr. Henry W. Adams and  
 Ms. Barbara A. Agresti  
 Mr. and Mrs. David L. Ader  
 Dr. and Mrs. Leon Adler  
 Ms. Susan S. Adler  
 Mrs. John J. Ahearne  
 Mr. and Mrs. Walter Alexander  
 Mr. Parviz Ali and Ms. Ayesha  
 Fareeduddin  
 Mr. Scott W. Allard and  
 Ms. Heather Hill  
 Ms. Leslie Allison  
 Mr. and Mrs. Thomas J. Allison  
 Mr. and Mrs. Michael Altman  
 Ms. Dwana Amos  
 Mrs. Edith C. Andrew  
 Mr. Thomas W. Andrews  
 Ms. Alona W. Anspach  
 Mr. Basil Apostolou  
 Ms. Ruth Archer and Mr. Jim Helke  
 Mr. Joshua Arlow  
 Mr. and Mrs. Bruce T. Armstrong  
 Ms. Dorsey Armstong and  
 Mr. Paul Schneider  
 Mr. and Mrs. Barry G. Arnason  
 Mr. and Mrs. Delbert W. Arsenault  
 Ms. Catherine Ashdown and  
 Mr. Neal Lofchy  
 Dr. Julia B. Ashenhurst  
 Ms. Noelle Au  
 Mr. and Mrs. Cooper Babich  
 Mr. and Mrs. John S. Babowice  
 Mr. and Mrs. Paul Backas  
 Mr. Luke Baer  
 Mr. and Mrs. Steve Baer  
 Ms. Lauren Baker  
 Mr. Timothy R. Baker and  
 Ms. Denise Guardino  
 Mr. and Mrs. William W. Baker  
 Mr. Edward M. Balcsik

<sup>T</sup> Trustee    <sup>A</sup> Edward E. Ayer Legacy Society donor    <sup>C</sup> Corporate Relations Program member

<sup>D</sup> Deceased    <sup>E</sup> Field Museum employee    <sup>N</sup> New Trustee

## Annual Fund cont'd

Mr. and Mrs. Randolph R. Baldridge	Mr. and Mrs. Sanjay Bhasin	Tim <sup>E</sup> and Julie Bratley	Mr. and Mrs. Wilfred P. Chapleau III
Mr. and Mrs. John T. Baldwin	Mr. and Mrs. Vivek Bhatt	Ms. Kimberlee A. Breckler	Mr. and Mrs. Robert P. Charles
Mr. and Mrs. Gregory Ball	Mr. and Mrs. Sam Bianco	Mrs. Marie Brelín	Ms. June M. Chenelle
Dr. Eugene L. Balter and Ms. Judith R. Phillips	Mr. William E. Bible	Mr. Joseph B. Brennan	Mr. and Mrs. Thong M. Cheng
Mr. Roger Bancroft	Ms. Lois J. Bider	Mr. and Mrs. Hugh F. Breslin	Ms. Joan S. Cherry and Mr. John R. Cara
Mr. Wayne A. Baran	Mr. and Mrs. Douglas Bidwell	Mr. and Mrs. David Brewer	Mr. and Mrs. Paul Choi
Mr. and Mrs. Randolph C. Barba	Mr. and Mrs. Henry S. Bienen	Mr. and Mrs. Lance M. Brisben	Mr. and Mrs. John A. Chojnicki
Barbara Notz Hines Foundation	Mr. and Mrs. Michael A. Bill	Mary J. Brister and McKinley H. Brister	Dr. and Mrs. Thomas J. Chorba
Mr. Craig Bargowski	Dr. Michael D. Bishop	Ms. Carolyn J. Brna	Mrs. Emily J. B. Christian
Mrs. Margaret Barilich	Mr. Frank L. Bixby	Mr. Charles T. Brockmann	Mr. and Mrs. R. Lee Christie
Tom Barkalow and Patricia Lougheed	Ms. Kay A. Bjork	Mr. and Mrs. John Broecker	Ms. Marylinn Chrystal and Ms. Sarah Chrystal
Mr. and Mrs. John W. Barr	Mr. and Mrs. Richard B. Black	Ms. Bo Brown and Mr. Bob Faull	Ms. Josephine S. Chyatte
Laurence and Sarah Barr	Mr. and Mrs. John Blaser	Mr. Seth N. Brown and Ms. Marya Lieberman	Randall Clark
Mr. and Mrs. Richard P. Barrett	Mr. and Mrs. Merrill Blau	Ms. Shannon E. Brown	Dr. and Mrs. Robert D. Clark
Mr. and Mrs. Darrell Bast	Mr. and Mrs. Jay S. Bleecker	Mr. and Mrs. Archibald T. Bryant	Mr. and Mrs. Steve Clark
Ms. Gail M. Battistoni	Mr. Jan Blok and Ms. Laura Melcher	Dr. Stephen J. and Mrs. Susan P. Buck	Brian Clarke and Margaret Feit Clarke
Mr. and Mrs. Kenneth J. Bazarnik	Mr. and Mrs. Stephen J. Bloom	Mr. and Mrs. Howard E. Buhse Jr.	Mr. and Mrs. Albert C. Claus
Mr. and Mrs. Edward M. Becht	Mr. and Mrs. Irwin A. Blumensadt Jr.	Mr. and Mrs. Michael Bukhalo	Ms. Michelle Clayton <sup>E</sup>
Mr. William T. Beck and Ms. Doreine Carson	Mr. Jerry V. Bobek Jr.	Mr. and Mrs. Werner Buol	Ms. Sharon L. Cline
Mr. and Mrs. Alvin G. Becker	Mr. and Mrs. Anthony Bochniak	Mr. and Mrs. Werner H. Buol	Mr. and Mrs. John E. Clisham
Reverend and Mrs. William C. Beckmann	Ms. Georgia Bockos	Mr. Robert T. Burd	Mrs. Arleen A. Coates
Mr. and Mrs. William Bedford	Mr. and Mrs. Erwin F. Bogs	Mr. Arthur M. Burgess and Ms. Linda Jaros	Mr. Benjamin A. Coats
Mr. and Mrs. Jeffrey Beech	Dr. Therese M. Bogs and Mr. W. Haser	Mr. and Mrs. Timothy L. Burke	Mr. and Mrs. John Cogan
Ms. Nancy Behrendt	Mr. and Mrs. George Bohling	Mr. Timothy J. Burroughs and Ms. Barbara Smith	Mr. and Mrs. Martin J. Cohen
Mr. and Mrs. George R. Bell	Mr. Carl J. Bohne Jr.	Mr. and Mrs. Joseph Bydon	Mr. William S. Cohen
Ms. Maryann Bell and Ms. Mary Suligoy	Mr. Daniel A. Bolm and Mrs. Peggy J. Keating-Bolm	Mr. Thomas Byrnes and Ms. Carol Rigmark	Mr. and Mrs. Terrance Coleman
Mr. and Mrs. Nikolai Beloreshki	Mr. and Mrs. Thomas C. Boltik	Eileen Cahill and Family	Mr. and Mrs. Terrence Collins
Mr. and Mrs. Michael D. Belsley	Dr. and Mrs. Michael Bommarito	Ms. Judith A. Caloud <sup>A</sup>	Ms. Cira V. Conley and Ms. Audrey Marquez
Mrs. Glynis Benbow-Niemier and Mr. Thomas Niemier	Mr. Marcello Bondurant	Mr. and Mrs. Joseph Caltagirone	Mrs. Gladys Connolly
Mr. and Mrs. Stephen E. Benefiel	Ms. Clarisa Bonilla	Dr. and Mrs. Rafael Z. Campanini	Mr. Edward Cooper
Arlene and Wayne Bennett	Mr. and Mrs. Gary Booth	Dr. and Mrs. John R. Canning	Ms. Julia Corcoran
Ms. Christine Bennett and Mr. Leon Blair	Ms. Kristine Bordenave and Mr. James Feeney	Mrs. Mary Cannizzaro	Mr. and Mrs. Steve Cornell
Mr. Edward Bennett	Mr. and Mrs. Charles Bowen	Mr. and Mrs. Thomas M. Carmazzi	Mr. and Mrs. Matthew Corpolongo
Mr. and Mrs. Paul S. Bennington	Mr. and Mrs. William C. Bowman Jr.	Dr. and Mrs. Charles Carroll	Ms. Kristine N. Cosentino
Ms. Ann Bentzen-Bilkvist	Mr. Loren Bowns and Ms. Cynthia Bowns	Mr. and Mrs. James R. Carter	Mr. and Mrs. Randall Costa
Dr. and Mrs. Michael Bercek	Mrs. Barbara A. Boyer	Mr. and Mrs. Steven Carter	Ms. Cynthia D. Cox and Mr. Robert Cox
Ms. Lynne D. Bergero and Mr. Philip Bonner	Dr. Bruce H. Boyer	Mr. and Mrs. Milton Blouke Carus	Mr. and Mrs. Thomas W. Coyle
Dr. and Mrs. Victor M. Bernhard	Dr. and Mrs. Bruce Hatton Boyer	Dr. and Mrs. Jesus Casas	Ms. Susan Craft
Mr. and Mrs. Robert Bernot	Mr. and Mrs. Dennis E. Bozych	Mr. and Mrs. John W. Castle	Andrew B. Critchell and Kelsey Critchell
Mr. and Mrs. Howard Bernstein	Mr. and Mrs. Stefan Brabeck	Mr. and Mrs. Scott Caudell	Mr. and Mrs. Jacob Crose
Mrs. Lieselotte N. Betterman	Roger and Mary Bradford	Ms. Cassia Cearley	Dr. Dolores E. Cross
Mr. and Mrs. Adrian D. Beverly	Ms. Maria Brandon and Mr. Randy Burrow	Ms. Mia Celano and Mr. Skip Dunn	Mr. Brian Crowdsen
	Mr. Willard Bransky	Mr. and Mrs. Gastone Celesia	Ms. Susan M. Crowell and Ms. Kathleen Cooke
		Ms. Michele Chaffee and Mr. Adam Nordin	



Ms. Eleanor L. Crumback	Mr. Michael Dobray	Ms. Karen Felix	Ms. Anne V. Fussell
Ms. Yvonne M. Curbis	Leonard and Patricia Dominguez	Mr. Irv Feltman	Mr. and Mrs. Daniel B. Gaeta
Dr. and Mrs. Arthur W. Curtis, MD	Mr. and Mrs. Joseph E. Doninger	Dr. John D. Ferguson and	Mr. and Mrs. John Gage
Mr. and Mrs. David V. Curtis	Ms. Gloria Donnelly	Ms. Elizabeth H. Zimmerman	Mr. Gregory J. Gajda
Mr. Michael P. Cwiklik	Ms. Laura Dooley	Dr. and Mrs. Balbino B. Fernandez	Mr. Thomas F. Gajewski and
Mr. and Mrs. Henry Czopek	Mr. and Mrs. Keith Dorman	Mr. and Mrs. Jose L. Ferrer	Ms. Marisa Alegre
Mr. and Mrs. James M. Daly II	Mr. and Mrs. James H. Douglas	Mr. and Mrs. John Ferrero	Albert and Sherri Galante
Mr. and Mrs. Ron Damashek	Mr. Thomas A. Drebenstedt and	Mr. and Mrs. Conrad T. Fialkowski	Mrs. Elizabeth A. Gallanis
Mr. Rhett Damon	Ms. Kathy Chilis	Mr. and Mrs. Robert W. Fick	Mr. James A. Galloway
Mr. and Mrs. Alfred E. D'Ancona II	Mr. Joseph H. Drummond	Ms. Amy M. Fielek	Mr. Donald C. Gancer
Mr. Michael Danforth and	Mr. Raymond Drymalski	Mr. Victor Filippini	Ms. Diane Mosak Ganden and
Ms. Eva Nielsen	Dr. and Mrs. Anthony B. D'Souza	Dr. Paula Fillak and Mr. Alex Fillak	Mr. Bryan Mosak
Mr. and Mrs. John A. Daniels	Mr. Michael S. Dublak and	Ms. Judith A. Findorff	Mr. and Mrs. Roger Gansauer
Jackie and Donald R. Dann	Mrs. Sharon M. Authier	Mr. and Mrs. Sanford Finkel	Ms. Martha A. Garcia
Mr. and Mrs. Michael Dashnaw	Ms. Janet M. Dudgeon	Ms. Deborah Finn	Lee Garrett
Mr. and Mrs. Robert J. Dau	Mr. and Mrs. Ferne L. Dungan	Mr. Kevin Finneran	Ms. Kendra Garstka
Mr. and Mrs. Bruce Davidson	Ms. Kristine B. Easton <sup>E</sup>	Dr. and Mrs. Terrance E. Fippinger	Mr. and Mrs. John Gately
Ms. Laura Davis	Ms. Glenna R. Eaves and	Ms. Susan Fischbach	Mr. Gregory Gates
Mr. and Mrs. Gerald D. Dawes Jr.	Mr. Christopher J. Boebel	Mr. and Mrs. Peter D. Fischer	Mr. and Mrs. Gilbert Gavlin
Mr. and Mrs. Dennis De Bruler	Mr. Marvin W. Ehlers	Mr. and Mrs. Justin M. Fishbein	Ms. Hildegard H. Geiger
Mr. Pierre De Smul and	Ms. Margaret M. Eiden	Mr. and Mrs. Duncan G. Fisher	Ms. Aimee Genova
Dr. Carol De Smul	The Robert G. Eiserman Family	Mr. and Mrs. James G. Fitzgerald	Ms. Julie L. Gentes
Mr. Bruce Dean	Mr. Allen E. Eliot	Mr. and Mrs. Dale Fleming	Mr. and Mrs. Stephen A. Gerlicher
Mrs. Howard M. Dean Jr.	Mr. J. Thomas Eller	Mr. and Mrs. Peter L. Flemister	Mr. and Mrs. Ed Gerns
Mr. and Mrs. William W. Dean	Professor Jean B. Elshtain and	Mrs. Sally Fletcher	Ms. Jennie Giammasi and
Mr. and Mrs. Mark D. Deaton	Mr. Errol Elshtain	Mr. and Mrs. Steve Flexman	Mr. Robert L. Scamen
Mr. and Mrs. Eugene C. Decker	Mr. John E. Emel and	Mr. Geoffrey A. Flick	Ms. Barbara A. Giddings and
Mrs. Carla M. Dehmlow	Ms. Cordelia Ryan	Ms. Dorothy Flisk	Mr. Robert Giddings
Ms. Judith A. DeLeon	Mr. and Mrs. Tomy Endo	Ms. Anita Flournoy	Mr. and Mrs. Terrance Glaab
Ms. Emily R. Dempsey	Mr. and Mrs. Mark A. Ertler	Mr. and Mrs. John F. Flynn	Mr. and Mrs. Thomas F. Glennon
Mr. and Mrs. Charles Dennehy	Mr. and Mrs. Ronald L. Eshleman	Mr. and Mrs. Bryan Ford	Ms. Paula Glitman and
Mr. and Mrs. Brian DeRe	Dr. Marilyn D. Ezri	Mr. Liam T. Ford and	Mr. Doug Stone
Dr. and Mrs. Eugene R. DeSombre	Mr. and Mrs. David P. Facklam	Ms. Ann R. Weiler	Ms. Maureen Glynn
Mrs. Uta DeTappan-Staley	Ms. Diana H. Fagan	Mr. and Mrs. James W. Forhan	Mr. Richard Gnaedinger
Ms. Doris Devine	Mr. Brian G. Fahrenbach	Ms. Katherine M. Fox	Mr. and Mrs. William H. Gofen
Mr. John DeWerd	Mr. Harry R. Fair and	Dr. and Mrs. Alvin L. Francik	Ms. Julia Goff and Mr. Greg Goff
Mr. William Dewoskin	Mrs. Carolyn E. Jordan	Mr. and Mrs. Patrick C. Frangella	Mr. Geoff Goldberg and
Ms. Eloise DeYoung	Mr. and Mrs. Albert J. Falasz	Mr. and Mrs. Lester E. Frankenthal III	Ms. Lynne Remington
Mr. and Mrs. Perry Di Girolamo	Ms. Ellen L. Falconer	Dr. Stasia J. Frank-Powers and	Mrs. Mary A. Goldberg
Mr. and Mrs. Philip Diamond	Ms. Irene Falout	Dr. Richard J. Powers	Mr. Stephen Goldberg
Ms. Mary D. Dickenson	Captain and Mrs. W. T. Fantry	Mr. and Mrs. William D. Franz	Mr. and Mrs. Samuel D. Golden
Ms. Amy T. Dickinson	Mr. and Mrs. James Fanuzzi	Mr. and Mrs. Larry Frazee	Rabbi Douglas H. Goldhamer and
Ms. Patricia Ann Dihel	Ms. Angela Farlow and	Mr. and Mrs. John F. Freund	Ms. Peggy L. Bagley
Dr. and Mrs. John R. Dimar	Dr. Steven Best	Mr. Lewis E. Freyer	Ms. Susan R. Goldman
Mr. William D. Dini	Mr. Carl B. Fausey and	Ms. Natale Fuller	Ms. Joan Goldstein
Mr. and Mrs. Paul F. Dittmann	Mrs. Debbie Annett	Dr. Brian Furlong and	Mr. and Mrs. Marion Golebiowski
Ms. Henrietta L. Dixon	Mr. Nicholas Fawley and	Dr. Denise Furlong	Mr. Christopher G. Golec
Mr. Joshua Dlouhy	Ms. Mary Andorfer	Mr. and Mrs. Joe Furlong	Ms. Judith Marx Golub
Mr. and Mrs. Robert S. Dobis	Ms. Julie A. Federico and	Dr. Sylvia E. Furner	Ms. Elizabeth L. Goodbody and
	Mr. Jay Mitchell		Mr. Ralph P. Beck
	Ms. Susan H. Feit and		Mr. and Mrs. Gene M. Gooding
	Dr. Neil R. Friedman		Ms. Eve M. Gorman

<sup>T</sup> Trustee   <sup>A</sup> Edward E. Ayer Legacy Society donor   <sup>C</sup> Corporate Relations Program member

<sup>D</sup> Deceased   <sup>E</sup> Field Museum employee   <sup>N</sup> New Trustee

## Annual Fund cont'd

Mr. and Mrs. Anthony Gorski	Mr. Joseph Hanley and Ms. Kristy Mardis	Mr. and Mrs. Joseph Hinkel	Mr. and Mrs. John Jakob
Mr. and Mrs. Donald E. Goss	Dr. Luke Hanley and Ms. Debran Rowland	Mr. and Mrs. Patrick R. Hirsch	Mr. and Mrs. Paul A. James
Mr. and Mrs. Numa R. Gottardi-Littell	Mr. Robert Hanlon and Mrs. Barbara MacDowall	Mr. and Mrs. Richard M. Hirsch	Mr. and Mrs. Joseph Janas
Mr. Robert Gourley	Ms. Rebecca Hanna	Ms. Geraldine B. Hletko	Joseph and Rebecca Jarabak
Terry Grace and Judith Gaietto-Grace	Ms. Moira Harding and Mr. Raymond Parmer	Dr. and Mrs. Zachary I. Hodes	Ms. Janice A. Jarnholm
Ms. Allison J. Graham	Mr. and Mrs. Michael Hargrave	Mr. Larry Hoellwarth and Dr. Ann Shih-Hoellwarth	Mr. and Mrs. James S. Jasionowski
Mr. and Mrs. William Graham	Ms. Bonnie K. Harkness and Mr. James F. Rogers	Ms. Judy Hoffman	Mrs. Barbara B. Javaras
Dr. Lance Grande <sup>E</sup>	Ms. Mattie H. Harris	Ms. Sandra N. Hoffman	Mrs. Nadia Jelinek
Mr. James C. Green	Mr. and Mrs. Ralph Harris	Mrs. Shirlee A. Hoffman	Miss Rose Mary Jelinek
Ms. Leila S. Green	Ms. Mary Anne Harrison	Mr. and Mrs. James M. Hohner	Mr. and Mrs. Terrence J. Jelinek
Mr. and Mrs. Richard K. Green	Mrs. Ann Harvey	Edward and Jo Ann Holba	Mr. and Mrs. Garrett Jenks
Mr. Daniel Greenberg	Ms. Jahnna Harvey and Mr. Joshua Croft	Dr. and Mrs. James M. Holland	Mr. James C. Jepsen and Ms. Jackie Finch
Dr. Norman C. Greenberg and Dr. Gilda M. Greenberg <sup>A</sup>	Mr. and Mrs. Edward D. Hatcher	Ms. Joan Hollick and Mr. Colin O'Donovan	Jeani and Rich Jernstedt
Mr. and Mrs. Mark J. Greenwood	Mr. and Mrs. Martin F. Hauselman	Mr. and Mrs. Fred Holubow	Ms. Maria Jimenez
Mr. Brian Gregory	Mr. and Mrs. Allan Hausfeld	Mr. and Mrs. Dean T. Honda	Ms. Judy Johanson
Kenneth and Anne Griffin	Ms. Emily J. Hayes	Mr. and Mrs. Joel D. Honigberg	Ms. Ann K. Johnson
Mr. and Mrs. Bobby D. Griffith	Mary J. Hayes, DDS	Mr. and Mrs. Charles L. Honkisz	Mr. Carl W. Johnson and Mrs. Laura M. Bloom-Johnson
Mr. and Mrs. Robert M. Grimm	Mrs. Eugene Heal	Mr. and Mrs. Douglas J. Hood	Mr. and Mrs. Leroy Johnson
Mr. and Mrs. Wayne J. Grobarcik	Lawrence R. Heaney, PhD <sup>E</sup>	Mr. and Mrs. William L. Hood Jr.	Dr. Maryl R. Johnson
Mr. John F. Grobe	Mr. Michael Heaney	Mr. and Mrs. Doug Hoogstra	Ms. Stacy L. Johnson <sup>A</sup>
Mr. and Mrs. David L. Grumman	Mr. and Mrs. F. Thomas Hecht	Mr. Thomas A. Hootman and Ms. Pamela J. Sisler	Mr. Christopher Jones and Ms. Gina Kimmel
Ada Mary Gugenheim and Jon N. Will	Mrs. Bette Heide	Mr. Glenn Hopkins	Mr. and Mrs. Douglas L. Jones
Dr. and Mrs. John W. Gustaitis Jr.	Mr. and Mrs. John Hellmuth	Mr. and Mrs. Michael L. Horsley	Ms. Elizabeth Jones
Mr. and Mrs. Stephen E. Gustavson	Ms. Judith Helzner and Mr. Robert Bernstein	Mr. Steven Howard and Mrs. Kathy Look	Mr. and Mrs. Kenneth P. Jones
Mr. and Mrs. Roger Guzas	Mr. and Mrs. Fritz Henderson	Mr. Fred Howayeck	Mr. and Mrs. Robert A. Jones Jr.
Mr. and Mrs. Peter Haak	Mr. and Mrs. Kenneth M. Henderson Jr.	Mr. Jonathan T. Howe	Mr. Thomas M. Jones
Mr. and Mrs. Dean L. Haas	Ms. Joyce K. Herdlika	Mrs. Laurie W. Howick	Mr. Richard W. Josd
Mr. Robert A. Habermann	Mr. and Mrs. Paul M. Herkes	Mr. and Mrs. David Hubbard	Dr. Debra Joslin and Mr. Hal Hancock
Mr. and Mrs. Mervin D. Hagen	Ms. Sandra Herrington and Mr. Daniel Brashear	Ms. Lisa Huber and Mr. Tim Borden	Dr. and Mrs. Gary M. Jouris
Mr. and Mrs. John Hague	Dr. Charlotte C. Herzog	Dr. and Mrs. Michael S. Huckman	Mr. and Mrs. Paul R. Judy
Ms. Dianne Haines	Mr. and Mrs. Tim Heyen	Mr. and Mrs. Frederick J. Hug Jr.	Mrs. Elizabeth E. Jurjevich
Ms. Holley Hall	Mrs. Patricia Heywood and Mr. Glen Komperda	Mr. and Mrs. Jawanza Hughes	Miss Judith Kadish
Mr. and Mrs. Jeffrey P. Hall	Mr. Daniel P. Hidding	Mr. and Mrs. Phillip D. Hulben	Mr. and Mrs. Thomas Kadlec
Dr. and Mrs. George S. Hallenbeck	Mr. and Mrs. Gary Higgins	Lynn and Philip Hummer	Mr. and Mrs. Erik T. Kahler
Mr. Christopher J. Hallett and Ms. Jackie Lustig	Mr. and Mrs. Roger Higgins	Mr. and Mrs. Jeffrey L. Hunt	Tess Kahler
Mr. and Mrs. Errol Halperin	Mr. Will Hightower	Ms. Kathy Hurley	Ms. Jill M. Kainu
Ms. Doris E. C. Hambacher	Mr. and Mrs. Harlow N. Higinbotham	Ms. Maria A. Iafollo	Dr. Srinivas Kakumani and Dr. Seetal Kakumani
Mr. Michael Hammerman	Mrs. Melissa E. Genova Hill and Mr. Joel Hill	Mrs. Sue B. Ish	Ms. Kathleen G. Kallan
Mr. and Mrs. Thomas J. Hammerman	Mr. Kenneth R. Hilton and Mr. Kenton Owens	Mr. and Mrs. Glynn Isoda	Mr. and Mrs. Thomas Kallen
Mr. and Mrs. Michael S. Hammond		Ms. Cheryl Istvan and Mr. Keith Daubenspeck	Dr. Sona Kalousdian and Dr. Ira D. Lawrence
Dr. Lanshan Han and Dr. Lili Du		Mr. and Mrs. Roland Jabotte	Mr. Michael Kalway
Mr. Larry L. Hanes		Mrs. Barbara Jackson	Mr. Dan Kane and Mrs. Sonia Dickerson
Mr. David E. Hanley and Mrs. Jeri Alles		Dr. Judith M. Jackson and Dr. Dannielle G. Jackson	Dr. Mary G. Kane and Mr. Vern Kerchberger
		Mr. and Mrs. Robert A. Jahnke	

Mrs. Lily Kanter  
 Mr. Michael Karayanis and  
 Ms. Deena Rogers-Karayanis  
 Themis and Melodie Karnezis  
 Mr. and Mrs. John A. Karoly  
 Mr. and Mrs. John S. Kasang  
 Ms. Karen Kass and  
 Ms. Kimberly Spagui  
 Dr. Claudia A. Katz  
 Mr. and Mrs. Gerald Kaufman  
 Mr. and Mrs. Arthur H. Kay  
 Mr. and Mrs. Michael G. Keck  
 Ms. Mary Jane Keitel <sup>E</sup> and  
 Dr. Mark Bouman <sup>E</sup>  
 Mr. and Mrs. Robert Kelch  
 Ms. Denise A. Kelley  
 Mr. and Mrs. Austin Kelly  
 Mr. and Mrs. Dennis J. Kelly  
 Mr. and Mrs. William H. Kelly Jr.  
 Ms. Miriam J. Kelm  
 Ms. Doris Kennedy and  
 Mr. Joseph Hoffman  
 Mr. and Mrs. Terrence Kennedy  
 Ms. Madalyn C. Kenney <sup>E</sup>  
 Mr. and Mrs. William S. Kenney  
 Mr. and Mrs. Harrison Kennicott  
 Mr. Evan Kent and Dr. Karen Kent  
 Dr. Susan B. Kern and  
 Ms. Alex Yamron  
 Ms. Paige Kerr  
 Ms. Kate T. Kestnbaum  
 Dr. and Mrs. Alan C. Keyes  
 Mr. Omar S. Khalil  
 Mr. Zuhair M. Khan  
 Mr. and Mrs. James P. King  
 Ms. Niamh King  
 Mr. and Mrs. James R. Kirk  
 Mr. and Mrs. William T. Kirk Jr.  
 Ms. June A. Kirwan  
 Mr. and Mrs. Dennis Klaeser  
 Mr. and Mrs. Adam Klauber  
 Ms. Anne V. Klecka  
 Mr. Keith Kleehammer and  
 Ms. Cheryl Sweeney  
 Dr. and Mrs. Thornton C. Kline Jr.  
 Mr. Joseph J. Klug  
 Ms. Judith L. Knie  
 Mr. and Mrs. Paul Knight  
 Ms. Valerie Knight and  
 Ms. Kathleen Benoit  
 Mr. and Mrs. Alfred J. Knox

Mr. Timothy B. Knuth and  
 Ms. Elizabeth Tate  
 Ms. Lottie J. Kobza  
 Ms. Sibyl Kobza and  
 Ms. Laura L. Kobza  
 Mr. and Mrs. Melvin J. Koenigs  
 Mr. and Mrs. John Koenigsknecht  
 Mr. and Mrs. Shohei Koide  
 Mr. and Mrs. Robert D. Kolar  
 Ms. Gera-Lind Kolarik  
 Mr. and Mrs. James Kolata  
 Ms. Betty H. Kolb  
 Mr. and Mrs. John E. Koliopoulos  
 Mr. and Mrs. Kelly Kost  
 Mr. John A. Koten  
 Ms. Regina Krakowski  
 Mr. and Mrs. Jeffrey M. Krasner  
 Mr. and Mrs. Walter P. Krauss  
 Ms. Jennifer Krejci  
 Mr. and Mrs. Lee V. Kremer  
 Mr. and Mrs. Elliott H. Krieter  
 Mr. and Mrs. Jeffrey A. Kriezelman  
 Mr. John Kristoff  
 Mrs. William J. Kristy  
 Mr. and Mrs. Brian Kroh  
 Mr. and Mrs. Larry S. Krucoff  
 Mr. Brian L. Kruse  
 Mr. and Mrs. Michael J. Kuehl  
 Mr. and Mrs. Alfred F. Kugel  
 Ms. Margaret Kullman  
 Mr. Satyajit Siddharth Kumar  
 Mr. and Mrs. Sheldon F. Kurtz  
 Mrs. Pauline L. Kuta  
 Ms. Anne E. Kutak  
 Ms. Lynne La Jone and  
 Mr. Chris Mollet  
 Ms. Donna La Pietra and  
 Mr. William H. Kurtis <sup>T</sup>  
 Mr. and Mrs. Mark R. Laatsch  
 Mr. Robert A. Ladewig  
 Mrs. Virginia E. LaGue  
 Mr. and Mrs. Philip E. Lake  
 Ms. Olivia Lam  
 Mr. and Mrs. Eliot A. Landau  
 Mr. Frederic S. Lane  
 Ms. Christine J. Laperuto and  
 Mr. William J. Roznowski  
 Ms. Aileen Laracuenta  
 Mr. Albert K. Larsen  
 Mr. and Mrs. Charles W. Larsen



Trustees and Museum friends pose for a photograph with President Richard W. Lariviere, Vice President Debra Moskovits, and Museum ecologists in front of the ruins of Machu Picchu. They spent eight days in Peru last November to experience the Museum's rapid inventory program. During their eight-day trip, they visited Cusco, Manu National Park, as well as the Villa Carmen and Wayqecha Cloud Forest biological stations.

*From left to right: (front row) Jan Lariviere, Debra Moskovits, Robin B. Foster, (back row) Richard W. Lariviere, Douglas Stotz, Laurel Ross, Dianne Campbell, Thomas Campbell, Jack W. Fuller, Alvaro del Campo, Wilbur H. Gantz III, Constance T. Keller, and Susan M. Benton.*

Mr. and Mrs. Jeff Larsen  
 Mr. and Mrs. Tom Larson  
 Ms. Linda S. Lauterbach  
 Mr. and Mrs. William Lawrence  
 Mr. and Mrs. Darryn Lazar  
 Mr. and Mrs. David C. Lazar  
 Mr. and Mrs. John H. Leach

Mr. Aaron Lebovitz and  
 Ms. Donna Myers  
 Dr. Steven H. Lee and  
 Dr. Kimberly F. Lee  
 Mr. William M. Lee Jr.  
 Ms. Anita Lees and Ms. Lisa Lees  
 Mr. and Mrs. Harold A. Leftwich

<sup>T</sup> Trustee    <sup>A</sup> Edward E. Ayer Legacy Society donor    <sup>C</sup> Corporate Relations Program member  
<sup>D</sup> Deceased    <sup>E</sup> Field Museum employee    <sup>N</sup> New Trustee



## Annual Fund cont'd

Mr. Paul A. Lehman and  
Ms. Ronna Stamm  
Mr. Mark Lenox  
Mr. and Mrs. Kurt A. Lentsch  
Mr. and Mrs. David Lentz  
Mr. and Mrs. Vincenzo O. Leone  
Mr. John R. Leopold  
Mr. Jack Lerman and  
Mrs. Elise Pike Lerman  
Ms. Elizabeth R. LeRoy  
Mr. Barry Lesht and  
Ms. Kay Schichtel  
Mr. and Mrs. Thomas E. Lesko  
Mr. and Mrs. Jon M. Leverenz  
Mr. and Mrs. Ellis Levin  
Mr. and Mrs. Kenneth C. Lewin  
Charles Ashby Lewis  
Mr. Gilbert Lichstein and  
Mrs. Ruth Czarnecki-Lichstein  
Ms. Sarah F. Lichtenstein  
Walter and Mr. Sam Walter  
Dr. and Mrs. David B. Lieb  
Keirstin and Ben Lincoln  
Mr. Lars W. Lindquist  
Mrs. Harriett J. Lindstrom  
Ms. Kristin Lingren  
Mrs. Cynthia C. Linton  
Mrs. Mary S. Lippa  
Mr. and Mrs. William F. Lloyd  
Mr. and Mrs. J. William Locke  
Shery and Mel Lopata  
Mr. and Mrs. Mike Lorschach  
Ms. Colleen Loughlin and  
Mr. John Sireck  
Mr. and Mrs. Ralph Love  
Ms. Holly Lowe  
Mr. Scott Lowe and  
Dr. Mary Martin-Lowe  
Mr. and Mrs. Frank Lucido  
Dr. and Mrs. Louis P. Lukancic  
Mrs. Pamela A. Lunsmann and  
Ms. Kelly Englum  
Jane and Steve Lupton  
Dr. John R. Lurain and  
Dr. Nell S. Lurain  
Mr. David O. MacKenzie  
Mrs. Robert F. MacNally  
Mr. Jesse Macro Sr. and  
Ms. Rachel Macro  
Mr. and Mrs. John W. Madigan  
Mr. and Mrs. Steve Magenta  
Make Up First School of  
Make Up Artistry

Ms. Betsy A. Makris  
Alexandra Margo Malos  
Mr. Dean Mamalakis and  
Mrs. Louise Mangos-Mamalakis  
Mr. and Mrs. Lester Mandelstein  
Mr. Charles Mann  
Mr. and Mrs. James Manz  
Mr. and Mrs. Ira Marcus  
Mr. and Mrs. Anuj Marfatia  
Mrs. Cynthia Mark-Hummel and  
Mr. John Hummel  
Mr. and Mrs. David Markovitz  
Mr. and Mrs. Tom Marley  
Mr. and Mrs. McKim Marriott  
Ms. Lynne Marshall  
Todd and Erika Martin  
Mr. and Mrs. Armando Martinez  
Dr. Marco L. Martinez and  
Dr. Susan Martinez  
Mr. and Mrs. John Martini  
Mr. William D. Mason and  
Ms. Diana Davis  
Mr. and Mrs. John Massey  
Mr. John R. Masters and  
Ms. Carmella Cottonaro  
Mrs. Donald W. Mather  
Mr. and Mrs. James R. Mather  
Mr. and Mrs. James Mathews  
Ms. Michelle Mathiesen  
Mr. and Mrs. Alan Matson  
Mr. Wesley D. Matthews and  
Mrs. Viviana Matthews  
Mr. and Mrs. Charles Mauter  
Mr. and Mrs. Charles M. May  
Ms. Teresa P. Mayfield  
George and Nancy Maze  
Mr. and Mrs. Henry H. Maze  
Mr. Raymond McBride  
Susan and John McBride  
Mr. John McCartan  
Mrs. Michelle McCarthy  
Mr. and Mrs. Mark J. McCarville  
Ms. Marilyn McClory  
Lisa McClung and Blasko Ristic  
Mr. Stuart A. McCrary and  
Ms. Nancy L. Davis  
Mr. and Mrs. Michael  
McCullough Jr.  
Ms. Nancy A. McDaniel<sup>A</sup>  
Mrs. Sherry L. McFall and  
Mr. Kenneth J. Porrello

Ms. Lois M. McCoughran  
Mr. Terry McGuire and  
Ms. Sharon Graham  
Mr. and Mrs. Joe McHaley  
Mr. and Mrs. G. Thomas McKane  
Ms. Susan A. McLaughlin and  
Mr. Alan H. Rebar  
Pat McMahon and L.W.  
McMahon-Padolski  
Ms. Danielle McMillan  
Ms. Alisa McQueen and  
Mr. Peter Lio

Mrs. Beverly M. Meyer  
Mr. Craig S. Michelsen  
Dr. Charles R. Middleton and  
Dr. John S. Geary  
Dr. James Miles  
Dr. Peter V. Miller and  
Dr. Dianne Rucinski  
Mr. and Mrs. Ronald Miller  
Mr. Vernon A. Miller and  
Ms. Kathryn Tecza  
Mr. James C. Mills and  
Ms. Lois S. Zoller



Artist Bunky Echo-Hawk leads Field Associates and members of the Native American community in an interactive painting demonstration. The event, part of the Field Associates' Summer Membership Soiree, was sponsored by Trickster Art Gallery and the Chicago Blackhawks. Inviting feedback from the audience as he painted, Mr. Echo-Hawk created an original work of art for the exhibition *Bunky Echo-Hawk: Modern Warrior* (Sep. 27, 2013–Jun. 7, 2015).

Mr. and Mrs. John S. Meany Jr.  
Mr. and Mrs. Joseph Meciej  
Mrs. Terry J. Medhurst  
Mr. Richard J. Medina and  
Ms. Maria T. Galo  
Mr. and Mrs. James Meehan  
Ms. Judith M. Meek and  
Ms. Nancy Wardrope  
Mr. John M. Meeks  
Ms. Claretta F. Meier  
Mr. and Mrs. James R. Meindl  
Mrs. Sarah J. Meisels  
Mr. Ken Metcalfe

Mr. and Mrs. Naveed Mirza  
Mr. and Mrs. Donald Mitchell  
Dr. Michael E. and  
Mrs. Kathy Moats  
Mr. and Mrs. Thomas M. Monahan  
Dr. and Mrs. Jose Montes  
Mr. Jose Dennis A. Monteverde  
Mr. James R. Montgomery  
Ms. Cynthia A. Moody  
Mr. and Mrs. Richard Moody  
Mr. and Mrs. Michael Moon  
Mrs. Frank J. Mooney  
Mr. and Mrs. David Moore

Mr. and Mrs. Earl Moore	Mr. and Mrs. Charles J. Nelson	Mr. and Mrs. Dennis V. Osimitz	Mrs. Marlene W. Phillips
Ms. Valerie Moore <sup>E</sup> and Mr. Benjamin C. Recchie	Mr. and Mrs. Willard K. Nelson	Mr. and Mrs. James J. O'Sullivan Jr.	Susan I. Phillips <sup>E</sup>
Mr. and Mrs. Kenneth Moreau	Ms. Lisa Nemeroff	Mr. and Mrs. Elliott N. Otis	Ms. Nella Piccolin
Mr. and Mrs. Fred M. Morelli Jr.	Mrs. Charlotte Newfeld	Ms. Barbara E. Otte and Mr. Bruce C. Shelley	Mr. Dennis Picha and Ms. Cynthia Wylie
Mr. and Mrs. Lawrence M. Morgan	Mr. and Mrs. Donald J. Newton	Mr. and Mrs. John E. Owens	Mr. and Mrs. Craig A. Pickenpaugh
Mr. and Mrs. David D. Morimoto	Ms. Gina Nicholas	Ms. Alyssa Padilla	Mr. and Mrs. James Piechowski
Mr. and Mrs. James D. Morris	Mr. Wade Nichols	Mr. and Mrs. Raymond Paice	Mr. and Mrs. Edmund Piehler
Ms. Patricia D. Morris	Ms. Eleanor A. Nicholson	Mr. and Mrs. Bruce Palmer	Mr. and Mrs. Robert G. Pierce
Mr. and Mrs. Stephen M. Morris	Mr. and Mrs. Gary R. Nickels	Mr. Donald Panovich and Ms. Jean Zoerner	Mr. and Mrs. Robert L. Pierce
Ms. Sabrina R. Morton	Ms. Karen Nickelson	Mr. and Mrs. Michael S. Parfenoff	Mr. and Mrs. Dan Pierro
Vijai K. Moses and Dr. Raj Lartius	Mr. Eric Nielsen and Ms. Ellen Papacek	Mr. Jason Parke and Ms. Margaret Parke	Mr. and Mrs. Daniel T. Pigott
Mr. Michael H. Moskow and Mrs. Suzanne M. Kopp-Moskow	Mr. and Mrs. Carl Nodus	Ms. Cheryl Parker	Mr. and Mrs. Michael Pilla
Ms. Allison M. Moulton	Mr. Raymond L. Noftsger and Dr. Tina Forchetti	Mrs. Eleanor Parker	Mr. and Mrs. Kris Pillai
Ms. Cheryl E. Mounts and Ms. Carla Williams	Mr. and Mrs. Richard S. Nopar	Ms. Karen S. Parker	Mr. and Mrs. Stephen Pinaire
Mr. Tyler G. Moynihan	Mr. Daniel Nora	Mr. Bill Parkhurst	Mr. and Mrs. Richard J. Pipala
Dr. Barbara Mudloff	Mr. and Mrs. Thomas Nordbrock	Stanley Parzen and Lynne Raimondo	Mr. John Piper
Mr. and Mrs. Kurt M. Mueller	Ms. June Novalich and Ms. Helene Novalich	Mr. and Mrs. Richard B. Paskin	Ms. Kass Plain and Ms. Maureen Plain
Lisa and John Mueller	Ms. Marion Nowak and Mr. Terry Boyd	Mr. and Mrs. Anthony C. Passanante	Mr. and Mrs. Walter J. Plank
Mr. and Mrs. Mark Mueller	Mr. W. Edward Null	Mr. Chris Pathaude and Ms. Pamela Ivers	Mr. and Mrs. Joseph B. Plauche
Mrs. Sandra L. Mueller <sup>A</sup>	Mr. and Mrs. Marcus J. Nunes	Mr. and Mrs. Donald W. Patterson	Mr. Peter W. Plumley and Ms. Anna M. Rappaport
Mr. and Mrs. Stephen Mueller	Dr. Elizabeth Nye, MD and Ms. Sandra Nye	Jim and Chris Patterson	Mr. Gregory A. Podczaski
Mr. William R. Muenster	Mr. Mark A. Oates and Ms. Elizabeth E. Lewis	Mr. and Mrs. Thomas G. Patterson	Mr. Philip E. Police
Ms. Maureen G. Mullally	Ms. Carrie O'Connor	Ms. Lisa J. Pattis	Mr. and Mrs. Jay Pollitt
Dr. Larry Munch	Mr. and Mrs. Daniel O'Connor	Mr. and Mrs. James B. Patton	Mr. and Mrs. Oren T. Pollock
Ms. Alicia Murasaki and Mr. Joe Carver	Mr. and Mrs. Neil O'Connor	Mr. Scott Pattullo and Ms. Jenny A. Johnson	Ms. Dana L. Pond
Mr. and Mrs. Edward C. Murawski	Mr. and Mrs. Donald R. Oder	Mr. and Mrs. Richard A. Paulus	Mr. and Mrs. Richard A. Posner
Mr. and Mrs. Guy B. Murdock	Mr. and Mrs. Ivan M. Odom	Mr. and Mrs. Rick Pavinato	Mr. William P. G. Potocek
Mrs. Matisa Murillo and Mrs. Mathilda Murillo	Ms. Ann M. Oehmen	Dr. David J. Peace and Ms. Karen Ferrer	Dr. Charles A. Pounian
Mr. and Mrs. J. B. Murphy	Mr. and Mrs. Robert Ohashi	Mr. Frederic C. Pearson	Mr. and Mrs. Michael Powers Sr.
Mr. and Mrs. James G. Murphy	Mr. and Mrs. William P. O'Keefe Jr.	Mr. and Mrs. Larry Pelletier	Mr. and Mrs. Paul C. Poy
Mr. John C. Murphy Jr.	Mr. and Mrs. Walter Olczak	Ms. Abigail Perkins	Mr. William C. Preston
Mrs. Charlotte Murray	Mr. and Mrs. Walter Oldham	Mrs. Marianne F. Perkins	Mr. Ronald Price and Mrs. Charlene Boeing-Price
Ms. Leota Ann Murray	Mrs. Carolyn A. Bury O'Leary	Mr. and Mrs. Norman Perman	Mrs. Sahalee Price and Mr. Brad Lee
Mr. Michael J. Murrin	Ms. Nancy Olive	Mr. and Mrs. David Perry	Dr. and Mrs. Richard A. Prinz
Mr. David E. Muschler and Ms. Ann L. Becker	Ms. Jean Olsen	Mr. Ira J. Peskind	Mr. and Mrs. Vincent Prolongeau
Mr. and Mrs. James W. Myers	Miss Marie E. Olsofka	Ms. Bonnie S. Peters	Mr. Alan J. Pulaski and Mrs. Jane C. Grady
Mr. and Mrs. Michael Myers	Mr. Steve Olson	Mr. James W. Peters	Mrs. Doris J. Puntney
Mr. and Mrs. William Myers	Mr. and Mrs. Theodore A. Olson	Mr. and Mrs. Mark Peters	Mrs. Chestine Puralewski
Mr. Jerry A. Nagles	Mr. Tod A. Olson and Ms. Julie Stauffer	Mr. and Mrs. Michael F. Petersen	Mr. James L. Puralewski and Ms. Ruth A. Francis
Mr. and Mrs. Ron Nahser	Mr. and Mrs. Ted Oppenheimer	Mr. David Peterson	Mr. and Mrs. John F. Pustola
Mr. Ganesh Natarajan and Ms. Faye Katt	Ms. Kathleen F. Orr and Dr. Edward S. Ogata	Mr. and Mrs. Kent Peterson	Mr. David Putman
Mr. and Mrs. Thomas Navta	Mr. and Mrs. Robert Orr	Mr. and Mrs. Jon Pfeffer	Mr. and Mrs. Albert E. Pyott
Dr. Shelly Neitzel and Dr. Andrew Laughy	Mr. and Mrs. Baltimore F. Ortega	Mr. and Mrs. Doug Pfeifer	The Quigley Family
			Mr. and Mrs. William Radzevich

<sup>T</sup> Trustee    <sup>A</sup> Edward E. Ayer Legacy Society donor    <sup>C</sup> Corporate Relations Program member

<sup>D</sup> Deceased    <sup>E</sup> Field Museum employee    <sup>N</sup> New Trustee

## Annual Fund cont'd

Mr. and Mrs. John Radzinski	Mr. and Mrs. Benjamin Rooks <sup>A</sup>	Ms. Susan D. Schlough and	Mr. and Mrs. Andrew D. Singer
Thomas and Karen Rafter	Mrs. Roberta Rosell and	Mr. Andrew D. Abbott	Mr. Junie L. Sinson
Mr. and Mrs. Norman X. Raidl	Mr. Howard Rosell	Ms. Beth Schmidt	Ms. Carol B. Skala
Mr. and Mrs. John R. Raitt	Mr. and Mrs. Harry B. Rosenberg	Mr. Richard C. Schmitt and	Mr. Jeffrey Skender
Miss Dorothy V. Ramm	Mr. Jack H. Rosenberg and	Mrs. Corinne R. Fargo-Schmitt	Mr. Jacob Sklarsky and
Dr. Ruth G. Ramsey and	Ms. Anne L. Wieboldt	Mr. and Mrs. Arthur Schneider	Ms. Mariann McKeever
Dr. Michael M. Ramsey	Mr. and Mrs. Michael Rosenberg	Dr. John F. Schneider	Mr. and Mrs. Frederick Sloneker
Miss Clara Ranzetta	Mr. and Mrs. Neil Rosenberg	Mr. Michael J. Schneider	Mr. and Mrs. Mitchell Slotnick
Mrs. Nancy V. Rascher	Mr. and Mrs. Jack Rosenfeld	Ms. Virginia Schnippel	Mr. and Mrs. Charles F. Small Jr.
Mr. and Mrs. Carig Ratajczyk	Mr. Karl Rosengren and	Mr. and Mrs. Paul W. Schroeder	Mr. Alvin M. Smith
Mr. and Mrs. S. Louis Rathje	Ms. Sarah Mangelsdorf	Mr. David L. Schultz	Dr. Bernard Smith, MD
Mr. and Mrs. Mark A. Ratner	Mr. and Mrs. Bernard Rosenstein	Dr. and Mrs. Peter F. Schultz	Mr. and Mrs. Charles F. Smith
Ms. Suzanne J. F. Reade and	Gracemary and Peter Rosenthal	Mr. Craig R. Schuttenberg and	Ms. Miriam A. Mobley Smith and
Mr. Bruce Foudree	Mr. Warner A. Rosenthal	Ms. Colleen M. O'Leary	Mr. Donald Brower
Mr. and Mrs. Chris Reagan	Robert and Marsha Rosner	Dr. and Mrs. Maurice Schwartz	Ms. Rebecca Gray Smith <sup>A</sup>
Mr. and Mrs. Walter W. Reed	Mr. and Mrs. Jonathan Ross	Mr. Melvin M. Schwartz and	Toni Sandor Smith
Mr. and Mrs. Mark E. Reeves	Mr. Michael C. Rothman and	Ms. M. Lisa Yaremko	Ms. Peggy Snorf
Ms. Stacey Reicherzer	Mrs. Bonnie F. Rothman	Mr. and Mrs. Stevan F.	Mr. and Mrs. Tom Snyder
Ms. Jill Reid	Mr. Phillip D. Rowe	Schweighardt	Mrs. Mary Sopocko
Mr. Patrick K. Reidy	Mr. Paul Rozylowicz and	Mr. and Mrs. Ronald K. Schwuchow	Miss Michelle Sotak
Mr. and Mrs. Craig Reiff	Ms. Tammy Storoe	Ms. Margaret F. Scott	Mr. Donald Southworth and
Dr. Mark S. Reiter and	Mr. and Mrs. Richard S. Ruffolo	Ms. Virdell F. Scott	Ms. Marilyn Cantisano
Dr. Kathleen A. Ward	Mr. and Mrs. George T. Rummel	Mr. Kenneth R. Seeskin and	Mr. Shawn Spagnoli and
Dr. Sigrida Renigers and	Mr. and Mrs. T. Alan Russell	Ms. Bronna L. Wasserman	Ms. Ann Krause
Ms. Astra M. Patrick	Laura <sup>E</sup> and Steven Sadler	Mr. and Mrs. T. Dwaine Sell	Mr. Paul P. Spanier
Mr. and Mrs. Philip J. Reny	Ms. Christine A. Salvator	Mr. Wayne Serven <sup>A</sup>	Ms. Sharon E. Spanogle and
Mrs. Merle Reskin	Mrs. Donald W. Sampson	Mr. and Mrs. Chris L. Seth	Mr. John A. Spanogle
Dr. Raiselle C. Resnick and	Mr. and Mrs. Emil Sanchez	Ms. Jennifer Shanahan	Mr. and Mrs. Jerome Spearman
Dr. Kenneth I. Resnick	Mr. Richard H. Sanders	Mr. Owen J. Shapiro and	Mr. Michael J. Spence
Ms. Linda Richardson and	Mr. and Mrs. Roger L. Sanders	Ms. Elisabeth Rose	Ms. Faith H. Spencer and
Mr. James Bowles	Mr. Norman L. Sandfield	Mr. and Mrs. Robert E. Shapiro	Mr. Mark Parts
Mr. Neil W. Rickert	Mr. and Mrs. Robert M. Sanford	Mr. and Mrs. John A. Shaw	Mr. Norman F. Spielman
Mrs. Mary Ellen Riedel	Ms. Nancy Sans	Mr. Francis L. Sheahan	Mr. and Mrs. Donald E. Sporleder
Mr. Wes Riess	Mr. and Mrs. Milan Saric	Mr. and Mrs. Charles Shenk	Mr. and Mrs. Eric Spratford
Mrs. Patricia A. Riley	Mr. Peter F. Saunders and	Mr. James V. Shipp and	Bill and Orli Staley
Ms. Amy A. Rippepi and	Ms. Patricia J. Larson	Ms. Nancy Marie Casper	Mr. and Mrs. David Stalle
Mr. Garry J. Grasinski	Mr. and Mrs. Fred Savaglio	Mr. and Mrs. William Shorey	Mr. and Mrs. Harlan F. Stanley
Mr. and Mrs. Steven A. Risley	Mr. and Mrs. Graham Sayers	Mr. and Mrs. Duward F. Shriver	Mrs. Patricia Stanley
Ms. Marsha Robinet	Ms. Vera Scekcic and	Mr. and Mrs. Douglas L. Shuman	Mr. and Mrs. Paul Steadman
Mr. and Mrs. David E. Robinson	Mr. Robert C. Osborne	Mr. Herbert S. Siegel	Mr. and Mrs. Michael R. Steel
Mr. and Mrs. Timothy M. Rockhill	Ms. Edna Schade	Ms. Bette H. Sikes	Mr. and Mrs. Derek Steelberg
Mr. and Mrs. Ismael Rodriguez	Mr. and Mrs. Peter Schaefer	Mr. and Mrs. Alan H. Silberman	Mr. and Mrs. Floyd Steele
Ms. Linda R. Rogers	Mr. and Mrs. William R. Schauer	Mr. and Mrs. David Silke	Mr. and Mrs. Kurt J. Steib
Mr. and Mrs. James Rogula	Mr. and Mrs. Terry G. Schechner	Mr. and Mrs. Salvador Silva	Mr. Jon Steimle
Jill and Ron Rohde	Mr. and Mrs. Jon Scherf	Mr. Daniel H. Silverstein	Mr. and Mrs. Richard Steinke
Ms. Marilyn Rohn	Mr. and Mrs. David M. Schiffman	Mr. Andrew B. Simmons and	Mr. and Mrs. John A. Stepan
Mr. and Mrs. Robert Rolih	Mr. and Mrs. Timothy J. Schilling	Mr. Mitchell Loewenthal-Grassini	Mr. and Mrs. Robert Stephens
Ms. Alicia D. Rollo	Ms. Kathleen Schillo	Ms. Ilene Simmons	Mr. and Mrs. Charles M. Stern
Joshua and Nancy Rolock	Dr. and Mrs. Richard L. Schilsky	Mr. and Mrs. William A. Simmons	Mr. and Mrs. Phillip L. Stern
Mr. and Mrs. Allan H. Romberg	Mr. and Mrs. Nathan Schloss	Ms. Mae Simon	Mrs. Doris F. Sternberg
Mr. and Mrs. Luis A. Romero	Mr. David L. Schlottback <sup>A</sup>	Mr. and Mrs. Eugene L. Simpson	



Mr. and Mrs. Donald M. Stewart	Ms. Kathleen Thompson	Mrs. Allison D. Walker	Mr. and Mrs. Robert Wilson
Mr. Jason Stimley and Ms. Veronica Posey	Mr. Stephen Tilley	Mr. and Mrs. Herschel D. Wallace III	Mr. and Mrs. Timothy R. Wilson
Mr. and Mrs. James B. Stinnett	Ms. Beverly Timm	Mr. Ronald J. Wallin and Ms. Whitney A. Parker	Mr. and Mrs. James R. Wimmer
Janet Stiven and Bernie Seewald	Dr. and Mrs. James Timmons	Mrs. Marge Walls and Mrs. Cassandra Sawyers	Mr. and Mrs. James R. Wise
Mr. and Mrs. John Stocchetti	Ms. Diane M. Tkach and Mr. James Freundt	Mrs. Kathleen Ward and Mr. Patrick Kelly	Mr. Robert F. Wisniewski
Mr. and Mrs. Howard L. Stocker	Ms. Virginia Tolc	Mr. Robert Ward and Ms. Gloria Seger	Mr. and Mrs. Arnold A. Witt
Mrs. Harriet C. Stone	Mr. and Mrs. Alvin V. Tollestrup	Mr. and Mrs. Kurt L. Warning	Ms. Robin Wold
Mr. and Mrs. Marv Strasburg	Mr. and Mrs. Wm. Ronald Tomecko	Mr. and Mrs. Scot E. Warren	Carl Wolf and Jennie Sochon
Ms. Marcia D. Stratsinsky	Dr. and Mrs. Maury K. Topolosky	Ms. Laura S. Washington <sup>†</sup> and Mr. Michael W. Richmond	Dr. Anne R. Wolfe and Mr. Brian Kelley
Mr. James R. Streicker and Ms. Mary W. Stowell	Mr. and Mrs. Leonardo Torres	Ms. Ann Wasoff	Mrs. Kathleen M. Wolfersberger and Ms. Cheryl Wolfersberger
Mr. and Mrs. John J. Streit	Mr. and Mrs. James M. Trapp	Ms. Lauren B. Watkins and Mr. Kevin D. McKee	Dorothy H. Wolff and Eric Wolff
Mr. and Mrs. Scott Subeck	Dr. and Mrs. Michael R. Treister	Ms. Vicki Wator	Mr. Edmund J. Wolff
Mr. and Mrs. Glen C. Suda	Mr. and Mrs. Barton G. Tretheway	Ms. Rosalind Wattel	Mr. Joseph Wolnski and Ms. Jane Christino
Constance and Howard Sulkin	Mr. and Mrs. John Trofa	Dr. Catherine L. Webb	Carole Wood and Carl Jenkins
Mr. and Mrs. John B. Sullivan	Mr. and Mrs. Christian Trummel Jr.	Mrs. Deborah S. Weber and Mr. George E. Ohlin	Ms. Patricia A. Worth
Mr. Richard Sullivan	Mr. and Mrs. John E. Tulley	Mr. Leonard L. Weber	Mr. Jeffrey J. Wunderlich
Ms. Nancy W. Sutherland	Mr. Adam Tumas Jr.	Mr. and Mrs. Andrew J. Weddig	Mr. David S. Yabloug
Mr. and Mrs. Harold Sutton Jr.	Mr. and Mrs. Dominic P. Turchi	Ms. Kathryn P. Weibel and Mr. Steve Freeman	Mr. and Mrs. Darryl Yerrick
Mr. Wayne Svoboda	Mrs. Elizabeth K. Twede	Mr. and Mrs. James Weidner	Mr. and Mrs. Chad M. Yonker
Hobart K. and Janis F. Swan	Dr. and Mrs. Richard Tye	Mr. and Mrs. Richard Weiland	Ms. Sandra L. Yost
Mr. and Mrs. Edwin L. Swanson	Ms. Norma Ubran	Mr. and Mrs. Gerald Weimann	Mrs. Janice C. Young
Ms. Linda J. Swanson	Mr. and Mrs. Enrique J. Unanue	Mr. and Mrs. James W. Weinberger	Owen and Linda Youngman
Mr. and Mrs. James H. Swartchild Jr.	Mr. and Mrs. Michael Urbik	Mr. and Mrs. Tom Weinberger	Mr. and Mrs. Donald Yurachek
Mr. and Mrs. David W. Swartz	Ms. Paula M. Uscian	Mr. and Mrs. John Weis	Diane and Lawrence Zalusky
Ms. Kelsie Swatek	Mrs. Murray J. Vale	Mr. and Mrs. Jerome S. Weiskopf	Mr. Denis M. Zamirowski
Ms. Loretta B. Sweeney	Mr. and Mrs. James Vallely	Mr. and Mrs. James Weiss	Mr. Daniel Zamudio and Mr. Miguel Zamudio
Mr. and Mrs. Steven Sweetser	Mr. Robert C. Vallone	Mr. David Wendling	Clementine Zavelle and Brian Ibsen
Mr. Kenneth Swiatkowski and Ms. Valerie Schoen	Ms. Melody A. Van Wermeskerken	Mrs. John A. Werhane	Ms. Barbara Zenner
Mr. and Mrs. Edward F. Swift III	Mrs. Theodore W. Van Zelst	Mr. and Mrs. David D. Wesselink	Mr. and Mrs. Hugh Zentmyer
Mr. J. Roger Swihart	Mr. John M. VanderLinden and Mr. John W. Butler	Ms. Fiona Wheeler	Mr. and Mrs. John T. Zick
Mr. and Mrs. Robert J. Syrup	Mr. and Mrs. Peter O. Vandervoort	Mrs. Carolyn M. White	Mr. and Mrs. William B. Zigterman <sup>A</sup>
Dr. and Mrs. Jan P. Szidon	Mrs. Christine E. Varela and Ms. Angela Varela	Mr. Bennie E. Whiten Jr.	Mr. and Mrs. Jay H. Zimbler
Mr. Steven Szyndrowski	Mr. and Mrs. Carson Veach	Dr. and Mrs. Jack M. Whitney III	Mr. and Mrs. Frederick N. Zimmermann
Ms. Diane Talbot and Mr. Alex Wiggins	Dr. Sara Vegh and Mr. Ken Ziejewski	Mr. and Mrs. Mark Wieclaw	Mr. and Mrs. John A. Zimmie
Ms. Gayle Taylor	Mr. S. R. Venkata and Mrs. Mary Slater Venkata	Ms. Laura A. Wilber	Mr. Tim Zintl and Ms. Alyssa Zintl
Ms. Kimberly K. Taylor and Mr. Zachary Larson	Mr. and Mrs. Leonard M. VerVers	Mr. and Mrs. Lawrence G. Wilcox	
Mr. and Mrs. R. F. Teerlink	Mr. and Mrs. John F. Vicha	Ms. Dana Wild	
Mr. Steven F. Tempel and Ms. Deborah Zekich	Mr. and Mrs. Randolph M. Videkovich	Dr. and Mrs. David B. Williams	
Ms. Janette Tepas	Ms. Catalina Vielma	Mrs. Audrey Williams-Lee and Mr. Byron Lee	
Mr. Nicholas Terrell	Mr. and Mrs. James R. Vieregg	Mrs. April R. Wilson	
Mr. and Mrs. Richard J. Thennes	Mr. and Mrs. Steven S. Viktora	Mr. and Mrs. Donald Wilson	
Ms. Kathy Tholin and Mr. Steve Starr	Mr. Andrew T. Wagner		
Mr. and Mrs. Robert W. Thomas	Mr. and Mrs. Richard A. Waichler		
	Ms. Rosa E. Walke		

<sup>†</sup> Trustee    <sup>A</sup> Edward E. Ayer Legacy Society donor    <sup>C</sup> Corporate Relations Program member

<sup>D</sup> Deceased    <sup>E</sup> Field Museum employee    <sup>N</sup> New Trustee

## World's Fair Families

*In celebration of the exhibition Opening the Vaults: Wonders of the 1893 World's Fair, descendants of the World's Columbian Exposition's directors and exhibitors gathered to honor their families' civic leadership and raise funds for The Field Museum.*

### Organizing Committee

Judy<sup>T</sup> and P. D. Block III  
 Jamee and Marshall<sup>T</sup> Field V  
 Jamee C. Field<sup>T</sup>  
 Wentworth and John E. McGovern III  
 Abby McCormick O'Neil  
 George Ranney and Victoria Post Ranney  
 Adele S. Simmons<sup>TA</sup> and John Simmons  
 Maureen Dwyer Smith<sup>T</sup> and Edward Byron Smith Jr.

Mrs. Ellen S. Buchen  
 Linda and Vincent Buonanno  
 Mr. Frederick Quintard Cregier Jr.  
 Ms. Shawn M. Donnelley and Mr. Christopher M. Kelly  
 Mr.<sup>T</sup> and Mrs. Thomas E. Donnelley II  
 Mrs. Charles C. Haffner III  
 Mirja and Ted Haffner  
 Stephanie and John Harris  
 Mr. and Mrs. Frank D. Mayer Jr.  
 Mr. John Meehl  
 Harold B. Smith  
 Mr. and Mrs. Richard Uihlein  
 Mrs. Henry P. Wheeler  
 Ms. Nancy Hamill Winter



Trustees Marshall Field V (left) and Adele S. Simmons (right) deliver remarks at a special event held for the descendants of the Chicago families who helped organize the World's Columbian Exposition of 1893. Guests, including Trustee Judy Greffin (center left) and John E. McGovern III (center), enjoyed a behind-the-scenes tour of the Museum's production studio to learn about the making of the exhibition *Opening the Vaults: Wonders of the 1893 World's Fair*. Thank you!

## Corporations, foundations, and government (unrestricted)

### \$100,000+

Chicago Park District on behalf of the people of Chicago  
 John D. and Catherine T. MacArthur Foundation

### \$50,000–99,999

Anonymous (2)  
 United Continental Holdings Inc.<sup>C</sup>

### \$25,000–49,999

Aon Corporation<sup>C</sup>  
 ArcelorMittal<sup>C</sup>  
 Baxter International Inc.<sup>C</sup>  
 Goldman, Sachs & Co.<sup>C</sup>  
 Peggy and Steve Fossett Foundation  
 Kenneth Griffin on behalf of Citadel<sup>C</sup>  
 Hitz Foundation  
 John R. Halligan Charitable Fund  
 JPMorgan Chase & Co.<sup>C</sup>  
 Julius N. Frankel Foundation  
 KPMG LLP<sup>C</sup>  
 Leo Burnett Worldwide<sup>C</sup>  
 McDonald's Corporation<sup>C</sup>  
 Northern Trust<sup>C</sup>  
 Pepsi Beverages Company<sup>C</sup>  
 Prince Charitable Trusts  
 Walgreens<sup>C</sup>

### \$10,000–24,999

A. Montgomery Ward Foundation  
 Bloomberg<sup>C</sup>  
 The Butz Foundation  
 Mr. Kent Chandler Jr. / The Buchanan Family Foundation  
 The Davee Foundation  
 Dover Foundation<sup>C</sup>  
 Hamill Family Foundation  
 Harris Family Foundation  
 ITW<sup>C</sup>  
 The Knowles Foundation  
 McGraw-Hill Education<sup>C</sup>  
 McGraw Hill Financial Inc.<sup>C</sup>  
 MetLife<sup>C</sup>  
 Morgan Stanley<sup>C</sup>  
 Motorola Solutions<sup>C</sup>  
 NYSE Euronext<sup>C</sup>  
 The Robert E. Gallagher Charitable Trust

S&C Electric Company<sup>C</sup>  
 Superior Mechanical Systems Inc.<sup>C</sup>  
 Tave & Associates LLC<sup>C</sup>  
 Troutman Sanders LLP<sup>C</sup>  
 UnitedHealthcare<sup>C</sup>  
 W. W. Grainger Inc.<sup>C</sup>

### \$1,000–9,999

A. G. Cox Charity Trust  
 Aileen S. Andrew Foundation<sup>C</sup>  
 Akzo Nobel Inc.<sup>C</sup>  
 Allyn Foundation Inc.  
 American Agricultural Insurance Company  
 Amsted Industries Foundation  
 Bertha Lebus Charitable Trust  
 BRE NorthAmerica Industrial Fund  
 Chauncey & Marion D. McCormick Family Foundation  
 Chubb Group Insurance Companies<sup>C</sup>  
 ComPsych Corporation  
 The Donnelley Foundation  
 Draper and Kramer  
 Fellowes Inc.  
 Gerald A. and Karen A. Kolschowsky Foundation Inc.  
 The Gerald Norton Foundation  
 GKN Foundation  
 The Horner Foundation  
 Institutional Capital Corporation  
 The Irving B. Harris Foundation  
 Kroeschell Engineering Co.<sup>C</sup>  
 MAC Restoration Contracting Inc.<sup>C</sup>  
 The Manaaki Foundation  
 Marlot Foundation  
 McDermott Will & Emery LLP<sup>C</sup>  
 McKee Family Foundation  
 Old Republic International Corporation  
 Primera Engineers Ltd.<sup>C</sup>  
 Sahara Enterprises Incorporated  
 Segal Family Foundation  
 Shure Incorporated  
 The Sommer Family Foundation  
 The Sulzer Family Foundation  
 Thorson Family Foundation  
 University HealthSystem Consortium

## The Edward E. Ayer Legacy Society

*The Edward E. Ayer Legacy Society recognizes extraordinary people who remember The Field Museum through bequests, trusts, and other planned and life income gifts.*

Anonymous (11)

Barbara and Steven Adelman

Marilynn Alsdorf

Mary Jane Arnam

Mr. Harry Axelrod

Mr. and Mrs. James H. Banach

Mr. and Mrs. Robert D. Becker

Dr. Helen R. Beiser

Robert and Ruth Berns

Willard L.<sup>T</sup> and Susan K. Boyd

Mr. Richard T. Brannegan

Mr. and Mrs. Frederick W.

Brooke III

Mrs. George R. Brumlik

Leo R. Buckert

Judith A. Caloud

Rita and John<sup>T</sup> Canning

Mrs. Robert Adams Carr

Mr. and Mrs. Henry T. Chandler

Mr.<sup>T</sup> and Mrs. Worley H. Clark Jr.

Mr. and Mrs. Stephen F. Condren

Mr.<sup>T</sup> and Mrs. Frank W. Considine

Ms. Rebecca Davidson

Ms. Janet W. Diederichs

Donald and Betts Baepler  
Endowment for Ornithological  
Study

Ms. Linda L. Egebrecht

La and Philip Engel

Mr. Richard F. Eveleth

Ms. Shirley M. Evans<sup>D</sup>

Mr. and Mrs. Fabio Fabbri

Mary and Bruce Feay

Marshall Field V<sup>T</sup>

Dr. and Mrs. Curtis B. Frank

Wilbur<sup>T</sup> and Linda Gantz

Mr. and Mrs. William E. Gardner

Mr. Lyle Gillman

Mrs. Warren L. Gjorup

Robert and Beth Gordon

Dr. Norman C. Greenberg and

Dr. Gilda M. Greenberg

Timothy and Joyce Greening

Mr.<sup>T</sup> and Mrs. Lewis S. Gruber

Ms. Tonja Rizai Hall



Sixty-seven donors and Museum friends enjoy remarks by President Richard W. Lariviere at the twentieth anniversary celebration of the Edward E. Ayer Legacy Society. Held on November 20, the luncheon honored the 140 current members of the Ayer Society and their contributions to the future of The Field Museum. Thank you!

Ms. Jeanne M. Hansen

Drs. Malcolm H. and Adele Hast

Mrs. Betty S. Hess

Mr. David D. Hiller<sup>T</sup>

Mrs. Harold H. Hines Jr.

John and Marjorie Hines

Peggy L. Hoberg

Ms. Melody Hobson<sup>T</sup>

Anita W. Hornbrook

Dr. and Mrs. James C. Hunt

Mr. Edward C. Jerkey

Ms. Stacy L. Johnson

Constance<sup>T</sup> and Dennis Keller

Mr. and Mrs. Jerry M. Kelly

Robert E. Lewis, PhD

Gail J. and Robert B.<sup>T</sup> Loveman

Mr. and Mrs. Bernard A. Mack Jr.

Ann C. Mallow

Mr. Peter A. Maren

Mr. Robert C. Marks

Ms. Nancy A. McDaniel

Dr. William B. McDonald and

Ptah Sekhmat Osiris

Erma S. Medgyesy

Hugo J. Melvoin<sup>TD</sup>

Robert and Lois Moeller

Sandra L. Mueller

Drs. James and Sandra Napolitan

Mr. and Mrs. John P. Nielsen

Irma Parker

Joseph and Jo Ann Paszczyk

Ms. Marie E. Peruscini and

Mr. Edward C. Bapple

Mr.<sup>T</sup> and Mrs. Richard J. Pigott

Mrs. John W. Pocock

Mr. and Mrs. Mane Pritza

Mrs. Alfred Lunt Putnam

Dr. Dominick S. Renga

Mr. Alan Resetar<sup>E</sup> and

Mrs. Donna Resetar

Mr. Richard F. Reynolds

Mrs. Sheila T. Reynolds

Ms. Anita J. Rogers

Mr. and Mrs. Benjamin Rooks

Mr. David L. Schlotterback

Mr. Franklin R. Schmidt

Patricia O. Schnadig

Ms. Thelma L. Schwartz

Mr. and Mrs. G. Curtiss Shaffer

Bob and Charlene Shaw

Marian Shaw<sup>D</sup>

Louise M. Sherman

Rose L. Shure

Miss Joanne Silver

Adele S. Simmons<sup>T</sup>

Rebecca Gray Smith

Ms. Suzette Sodini

Mr. and Mrs. John R. Stanek

Duane E. and Christine M. Stout

Ms. Judith B. Sugarman

Datin Fui Lian Tan and Datuk

Dr. Robert F. Inger

Mr. Gerald M. Torrence

Rose and Robert Wagner

David Wargowski

Mr. Lon Wehrle

Nestor R. Weigand Jr.

Barbara H. West

Mrs. Dorothy B. White<sup>D</sup>

Ms. Virginia L. Whittaker

Ms. Claudia L. Winkler

Mr. Lawrence J. and

Mrs. Margaret V. Witry

Mr. James G. Young

Mr. and Mrs. William B. Zigterman

Ms. Christine C. Zogus

## Estate gifts and bequests

*The Field Museum commemorates the following people for their profound bequest, legacy, and estate gifts received in 2013.*

A. Watson Armour

Frank B. Foster

Evelyn Frank

Ilse Friend

Hugo J. Melvoin<sup>TAD</sup>

Betty D. Prout

Gerda Schild

Jane B. and Chester D. Tripp

Lydia Walkowiak

<sup>T</sup> Trustee    <sup>A</sup> Edward E. Ayer Legacy Society donor    <sup>C</sup> Corporate Relations Program member

<sup>D</sup> Deceased    <sup>E</sup> Field Museum employee    <sup>N</sup> New Trustee





Women's Board Gala co-chairs Leslie Gantz McLamore (above left) and Julie Hughes O'Connor deliver opening remarks at the annual gala on October 26. Titled "A Fair to Remember: Chicago, 1893," the event raised \$2.1 million, making it the most financially successful gala in Field Museum history. Congratulations, Leslie and Julie, and thank you!

## Women's Board Gala

*The Women's Board Gala, the annual fundraiser for The Field Museum, raised more than \$2.1 million to support science, education, exhibitions, and conservation programs.*

### Host Committee (\$50,000+)

Abbott  
Aon Corporation  
BMO Harris Bank  
The Boeing Company  
Rita and John<sup>T</sup> Canning<sup>A</sup>  
The Crown Family  
Mr.<sup>T</sup> and Mrs. Roger K. Deromedi  
Jacky and Michael<sup>T</sup> Ferro,  
The Sun-Times Foundation and  
The Chicago Community Trust  
Wilbur<sup>T</sup> and Linda Gantz<sup>A</sup>  
Christina and Ron<sup>T</sup> Gidwitz

Jim Gordon and David M. Tolmie,<sup>T</sup>  
The Edgewater Funds  
Mr. David G. Herro<sup>T</sup>  
Mr. and Mrs. Harlow N.  
Higinbotham  
ITW  
J. B.<sup>T</sup> and M.K. Pritzker Family  
Foundation  
JPMorgan Chase & Co.  
Mr.<sup>T</sup> and Mrs. Michael L. Keiser  
Mr. and Mrs. Barry L. MacLean  
The Negaunee Foundation  
Northern Trust  
Mr. and Mrs. J. Christopher Reyes  
John W.<sup>T</sup> and Jeanne M. Rowe

### \$25,000-49,999

Jeffrey S. Aronin  
The Duchossois Group Inc.  
Exelon Corporation  
Mr.<sup>T</sup> and Mrs. James S. Frank

Grosvenor Capital Management LP  
Leo Burnett Worldwide  
Mr. and Mrs. William A. Osborn  
Robert R. McCormick Foundation  
Mr. and Mrs. Patrick G. Ryan  
Walgreens  
Wirtz Corporation

### \$15,000-24,999

Dr.<sup>T</sup> and Mrs. Richard A. Chaifetz  
Froilan and Cecilia Concepcion  
Dr. Adnaan Hamid<sup>T</sup> and  
Mrs. Elissa Efroymsen  
Howard B. Bernick<sup>T</sup> Foundation  
Mr. and Mrs. Alan J. Lacy  
Robert M. and Diane von  
Schlegell Levy<sup>T</sup>  
PNC Financial Services Group Inc.  
The PrivateBank  
Mr. and Mrs. Tor Solberg  
UnitedHealthcare

### \$8,000-14,999

Allstate Insurance Company  
ARAMARK Corporation  
ARAMARK Parks & Destinations  
ArcelorMittal  
Mr. and Mrs. James N. Bay Jr.  
Mr. and Mrs. Philip D. Block IV  
BlueCross BlueShield of Illinois  
Barbara<sup>E</sup> and Roger Brown  
Mr. and Mrs. Michael P. Cole  
Mr.<sup>T</sup> and Mrs. Robert W.  
Crawford Jr.  
Mr. and Mrs. W. J. Farrell  
Fieldglass Inc.  
Grant Thornton LLP  
Mr.<sup>T</sup> and Mrs. Jack M. Greenberg  
Mr. and Mrs. King W. Harris  
Katie Hazelwood and Todd<sup>T</sup> Kaplan  
Mr. and Mrs. John W. Higgins  
Mr. and Mrs.<sup>T</sup> Dennis J. Keller<sup>A</sup>  
Mr. and Mrs. Frederick A. Krehbiel  
Mr. Randolph R. Kurtz<sup>T</sup>  
Locke Lord LLP  
Mr. and Mrs. Andrew J.  
McKenna Sr.  
Mr.<sup>T</sup> and Mrs. Bobby Mehta  
Clare M. Muñana<sup>T</sup>  
Mr.<sup>T</sup> and Mrs. Neil S. Novich  
Peter<sup>T</sup> and Alicia Pond

Elizabeth Pruett  
Mr. and Mrs. Phillip B. Rooney  
S&C Electric Company  
Mr. and Mrs. Gordon I. Segal /  
Segal Family Foundation  
Matthew K.<sup>T</sup> and Julie Simon  
Mr.<sup>T</sup> and Mrs. Mark Tebbe  
Mr. and Mrs. Thomas Tisbo  
Kim<sup>T</sup> and Miles<sup>T</sup> White  
William Blair & Company  
Wm. Wrigley Jr. Company  
Linda<sup>T</sup> and Ron Wolf

## Special gifts

*Special gifts include restricted support from donors who made gifts and new commitments in 2013.*

### \$1,000,000–4,999,999

The Boeing Company  
The Grainger Foundation  
Mr. and Mrs.<sup>T</sup> Dennis J. Keller<sup>A</sup>  
National Science Foundation

### \$100,000–999,999

Allstate Insurance Company  
America for Bulgaria Foundation  
American Research Center in Sofia Inc  
Andrew W. Mellon Foundation  
ArcelorMittal  
Bobolink Foundation  
Rita and John<sup>T</sup> Canning<sup>A</sup>  
Cyrus Chung Ying Tang Foundation  
Discover Financial Services  
Dr. Ralph and Marian Falk Medical Research Trust  
Elizabeth F. Cheney Foundation  
The Elizabeth Morse Charitable Trust  
Ernst & Young LLP  
Exelon Corporation  
Mr.<sup>T</sup> and Mrs. Marshall Field<sup>A</sup>  
Mr.<sup>T</sup> and Mrs. James S. Frank  
Wilbur<sup>T</sup> and Linda Gantz<sup>A</sup>  
Gordon and Betty Moore Foundation  
Pamela K. and Roger B. Hull  
IDP Foundation, Inc.  
Illinois Department of Natural Resources  
Institute of Museum and Library Services  
ITW  
J. B.<sup>T</sup> and M. K. Pritzker Family Foundation  
John D. and Catherine T. MacArthur Foundation  
Mr.<sup>T</sup> and Mrs. Michael L. Keiser  
Barry and Mary Ann MacLean—MacLean-Fogg Co.  
Mr. Andrew H. Mathis  
Mr.<sup>T</sup> and Mrs. Bobby Mehta  
The Negaunee Foundation  
PNC Financial Services Group Inc.

Prince Albert II of Monaco Foundation  
Robert R. McCormick Foundation  
John W.<sup>T</sup> and Jeanne M. Rowe  
Cari and Michael<sup>T</sup> Sacks  
The Searle Funds at The Chicago Community Trust  
UL  
Viking Cruises

### \$25,000–99,999

Anonymous  
Ms. Susan M. Benton<sup>T</sup>  
Mr. and Mrs.<sup>T</sup> Philip D. Block III

D & R Fund  
Ellis Goodman Family Foundation  
Fifth Third Bank  
Dr. Marjorie Fisher  
Ford Motor Company Fund  
Gantz Family Foundation  
Gaylord and Dorothy Donnelley Foundation  
Ms. Sue Ling Gin<sup>T</sup>  
Hamill Family Foundation  
Harris Family Foundation  
JPMorgan Chase & Co.  
JRS Biodiversity Foundation  
Mr. and Mrs. Bruce H. Lauer

National Fish and Wildlife Foundation  
National Park Service  
Ms. Karen A. Nordquist  
Pearson Education Holdings Inc.  
Quest Foundation  
The Regenstein Foundation  
Richard H. Driehaus Charitable Lead Trust  
Sally Mead Hands Foundation  
Bob and Charlene Shaw<sup>A</sup>  
Target  
Glenn<sup>T</sup> and Jacqueline Tilton  
William G. McGowan Charitable Fund Inc.

### \$10,000–24,999

Anonymous (5)  
Bears Care  
Terry and Gail<sup>T</sup> Boudreaux  
Barbara E. Brown<sup>E</sup>  
CATH Associates  
Consejo Superior de Investigaciones Cientificas  
Mr.<sup>T</sup> and Mrs. Robert W. Crawford Jr.  
General Packaging Products  
Christina and Ron<sup>T</sup> Gidwitz  
Drs. Jonathan Haas<sup>E</sup> and Winifred Creamer  
Heitler Fund  
Helen V. Brach Foundation  
Hill Mechanical Group  
The Hoellen Family Foundation  
Institute for Aegean Prehistory  
James S. Kemper Foundation  
Jocarno Fund  
Laurie and Rich Kracum  
Marie Curie Foundation  
Mr.<sup>T</sup> and Mrs. Leo F. Mullin  
National Geographic Society  
Richard H. Driehaus Foundation  
Mr. and Mrs. Richard H. Schnadig  
Siragusa Foundation  
Mr. and Mrs. Orlin D. Trapp Jr.  
U.S. Bancorp Foundation  
WebFilings LLC

### \$5,000–9,999

Anonymous  
AT&T Inc.



Trustee W. Rockwell Wirtz, chairman of the Chicago Blackhawks, poses with the Stanley Cup and Sue. Mr. Wirtz generously hosted a public viewing of the trophy on October 12 to celebrate the Blackhawks' win of the NHL championship. Fans from the region, many of whom lined up the night before and slept on the front steps, flocked to the Museum. The crowd was so large, the Museum opened one hour early. More than 7,000 people took photographs with the Stanley Cup trophy. Congratulations, Rocky, and thank you for this unforgettable occasion!

The Brinson Foundation  
Mr. T. Kimball Brooker  
Dr.<sup>T</sup> and Mrs. Richard A. Chaifetz  
Mrs. Joyce E. Chelberg  
Chicago Blackhawks Charities  
The Crown and Kunkler Family

Mr.<sup>T</sup> and Mrs. W. James McNerney Jr.  
Mrs. Withrow W. Meeker  
Debra Moskovits<sup>E</sup> and Jack W. Fuller  
Motorola Solutions Foundation

<sup>T</sup> Trustee   <sup>A</sup> Edward E. Ayer Legacy Society donor   <sup>C</sup> Corporate Relations Program member

<sup>D</sup> Deceased   <sup>E</sup> Field Museum employee   <sup>N</sup> New Trustee

## Special gifts cont'd

Mr. and Mrs. Andrew K. Block  
Charles Adams Nature Research Foundation  
Charles and M. R. Shapiro Foundation  
Mr.<sup>T</sup> and Mrs. Roger K. Deromedi  
The Field Foundation of Illinois  
Grand Victoria Foundation  
Mrs. Robert C. Hyndman  
Mr. Bryant L. Keil<sup>T</sup>  
Mr. and Mrs. Martin Jesse Koldyke/  
Koldyke Family Foundation  
McGraw Foundation  
Susan Mikalauskis  
Mr. and Mrs. Kenneth Nebenzahl  
Mr. Gary L. Neilson and Ms. Trudy A. Havens  
Mr. F. Oliver Nicklin Jr.  
Patrick and Anna M. Cudahy Fund  
Mr. and Ms. George A. Ranney Jr.  
The Warwick Foundation  
Kim<sup>T</sup> and Miles<sup>T</sup> White  
World Wildlife Fund

## \$1,500–4,999

Anonymous (2)  
Mr.<sup>T</sup> and Mrs. Charles W. Benton  
Dr. Rüdiger Bieler<sup>E</sup> and  
Dr. Petra Sierwald<sup>E</sup>  
Thomas and Dianne Campbell  
Mary and Richard Chamberlin  
The Colmar Foundation  
Pam and Howard Conant Jr.  
Mr. and Mrs. Patrick Corrigan  
Dr. Aural T. Cross<sup>D</sup>  
Mr. and Mrs. David Devonshire  
The Donnelley Foundation  
Mr. and Mrs. Paul M. Embree  
Mary and Bruce Feay<sup>A</sup>  
Mr.<sup>T</sup> and Mrs. Jack M. Greenberg  
Dr. Malcolm H. Hast<sup>A</sup>  
IBM  
Jeani and Rich Jernstedt  
Ms. Judy Johanson  
Mr. and Mrs. W. Bruce Johnson  
Mr. and Mrs. James M. Johnson  
Ms. Kathleen Jordan  
Ms. Anne Kavanagh and  
Mr. Terry Smith  
Mr. and Mrs. Dennis Klaeser  
Ms. Phyllis Lockett

Marshall B. Front Family Charitable Foundation / Laura De Ferrari and Marshall B. Front<sup>T</sup>  
Susan and John McBride  
Ms. Nancy A. McDaniel<sup>A</sup>  
Mr. and Mrs. Brian C. Miller  
Multi Group Logistics  
Mr. and Mrs. Walter B. Newsom  
Mr. and Mrs. William A. Osborn  
Mr. and Mrs. Shelby Pruett  
Dr. George B. Rabb  
Ms. Sri Reddy and  
Mr. Brian R. Sullivan  
Mr. and Mrs. Phillip B. Rooney  
Mr. and Mrs. Andrew M. Rosenfield  
Ryan Ruskin  
Mr. and Mrs. John W. Rutledge  
Mr. and Mrs. Steven M. Ryan  
Mr. and Mrs. Stephen Schmitt  
Mr. and Mrs.<sup>N</sup> Jeffrey S. Sharp  
Alissa and Jonathan Shulkin  
Mr.<sup>N</sup> and Mrs. Kevin Stineman  
Mr.<sup>T</sup> and Mrs. David M. Tolmie  
Vermont Community Foundation  
David Weinberg and Jerry Newton  
Mr.<sup>T</sup> William J. White  
Ms. Claudia L. Winkler<sup>A</sup>

## In-kind gifts

Abbott  
ARAMARK Parks & Destinations /  
Field to Table Catering and Events  
Asado Coffee Company  
Bay's English Muffins  
BBJ Linen  
Beam  
Blue Plate  
Chicago Athletic Clubs  
Chicago Symphony Orchestra  
The Chocolate Shoppe  
Comcast  
Creatia  
Disney  
ESRI Field To Table  
Flower Firm  
Food For Thought  
Frost Chicago  
Hall's Rental  
HMR Designs  
Ivan Carlson & Associates  
Jewell Events Catering  
Justin's  
Kehoe Designs  
Kraft Foods  
Louis Glunz Beers Inc.  
McDonald's Corporation  
Microsoft  
Motorola Solutions  
Munro Campagna  
Music Box Theatre  
Oogie's Gourmet Popcorn  
Pabst Brewing Company  
PepsiCo / Frito-Lay Inc.  
Potbelly  
Quaker Oats  
Shedd Aquarium  
Target  
United  
Upton's Naturals  
Walgreens  
Windy City Paws  
Wm. Wrigley Jr. Company

## Volunteer leadership

## The Women's Board

*The Women's Board promotes awareness of The Field Museum's exhibitions, collections, research, conservation efforts, and public programs. Its philanthropic activities provide restricted and unrestricted funds that advance the Museum's scientific and educational mission.*

Kim White<sup>T</sup>  
*President*  
Betsy Ahearne  
*Secretary*  
Laura Ferris Anderson  
*Women in Science Fellowship*  
Fran Beatty  
*Museum Relations*  
Janice Beck  
*Field Trips*  
Virginia Bobins  
*Nominating*  
Cathy Busch  
*Programs*  
Lenore Cameron  
*Field Dreams*  
Kathleen Carbonara  
*Vice President*  
Elizabeth O'Connor Cole  
*Programs*  
Jacky Ferro  
*Membership*  
Beth Glass  
*Vice President*  
Karen Gray  
*Nominating*  
Marty Higgins  
*Field Trips*  
Anne Kavanagh  
*Women in Science Fellowship*  
Kathleen Klaeser  
*Women in Science Luncheon*  
Kelli Klauber  
*Annual Appeal*  
Laurie Kracum  
*Membership*  
Lenore Macdonald  
*Bylaws*  
Dorothy Marks  
*Member-at-Large*  
Susan Clark McBride  
*Women in Science Luncheon, Member at Large*  
Lisa McClung  
*Treasurer*



Leslie Gantz McLamore  
*Gala*

Ellen O'Connor  
*Board Luncheons*

Julie Hughes O'Connor  
*Gala*

Cathy Osborn  
*Hospitality*

Anne Patel  
*Field Dreams*

Barbara Pearlman  
*Long Range Planning*

Amanda Rutledge  
*Children's Holiday Celebration*

Susan Sebulsky  
*Children's Holiday Celebration*

Bonnie Stearns  
*Hospitality*

Jackie Tilton  
*Board Luncheons*

Amy Tuchler  
*Annual Appeal*

### President's Leadership Council

*The President's Leadership Council enhances and expands the reach of The Field Museum's educational mission. Council members support and advocate for broadly accessible programs that increase people's understanding of the world's diverse cultures and environments.*

Kevin Stineman<sup>N</sup>  
*Chair*

Michael Arnold  
*Education Initiatives*

Randy Burt  
*Board Resources*

Lori Dawson  
*Treasurer*

Jeffrey Havsy  
*Membership*

Jeffrey Korzenik  
*Membership*

John E. McGovern III  
*Secretary*

Catharon Miller  
*Programs, Field Trip*

Ryan Ruskin  
*Vice Chair*

Alissa Shulkin  
*Programs, Field Trip*

Amanda Sonneborn  
*Board Resources*

Steve Vivian  
*Education Initiatives*

### Council on Africa

*The Council on Africa brings together the Museum's supporters and scientists who share an interest in the African continent and its people. Council members' contributions are allocated to existing capacity-building projects, training young African scientists, and sponsoring research endeavors across the continent.*

David M. Tolmie<sup>T</sup>  
*Chair*

Anonymous

Mary and Richard Chamberlin

Pam and Howard Conant Jr.

Marian F. Cook

Mary and Bruce Feay<sup>A</sup>

Dr. and Mrs. James L. Foght

Susan M. Forney

Ms. Judy Johanson

Ms. Kathleen Jordan

Mr. and Mrs.<sup>T</sup> Dennis J. Keller<sup>A</sup>

Mr. and Mrs. Bruce H. Lauer

Deborah and Daniel Manoogian

Ms. Nancy A. McDaniel<sup>A</sup>

Ms. Elisabeth C. Meeker

Adele S. Simmons<sup>TA</sup> and  
John L. Simmons

Mr.<sup>T</sup> and Mrs. David M. Tolmie

### Anthropology Alliance

*The Anthropology Alliance promotes interest in and support of The Field Museum's anthropological research and collections.*

Bob Shaw<sup>A</sup>  
*Chair*

Aimee Genova  
*Nominating*

Joan Goldstein  
*Programs*

Timothy Greening<sup>A</sup>

Yolande Lucas

Terry McGuire

Susan Mikalauskis  
*Membership*

James Stola  
*Nominating*

Sheila Whalen  
*Communications*

### Field Associates

*The Field Associates is an Annual Fund level designated by and for young professionals (21 to 35 years old). Its mission is to engage Chicago's next generation.*

Sarah Lichtenstein Walter  
*President*

Tim Frisbie  
*Membership*

Melissa Genova Hill  
*Membership*

Ben Lincoln  
*Communications*

Keirstin Lincoln  
*Programs*

Helen Odom  
*Programs*



Trustee Kim White concluded her two-year term as president of the Women's Board in May 2014. A transformational leader, she refocused the Women's Board's efforts on the Museum's new institutional priorities. She also led the Women's Board in reaching new levels of fundraising. Because of this fundraising success, the Women's Board made a significant contribution to advance these priorities. Thank you, Kim, for your inspiring leadership!

<sup>T</sup> Trustee   <sup>A</sup> Edward E. Ayer Legacy Society donor   <sup>C</sup> Corporate Relations Program member

<sup>D</sup> Deceased   <sup>E</sup> Field Museum employee   <sup>N</sup> New Trustee

## Museum volunteers

*Museum volunteers contribute their time and utilize their diverse skills to help advance The Field Museum's mission. In the public galleries, they help visitors discover the wonders of science and develop an appreciation for cultures around the world. Behind the scenes, they support groundbreaking work. The following volunteers contributed 200 hours or more in 2013.*

### 500+ hours

Richard Bisbing  
Irene Broede  
Drew Carhart  
Ellis Caspary  
Robin Delapena  
John DeWerd  
Christine Frazer  
Peter Gayford  
Matthew Girard  
Richard Guzik

Bernice Jacobs  
Dennis Kinzig  
Joanne Levy  
Peter Lowther  
Sandra Mueller <sup>A</sup>  
Timothy Nelson  
Karen Nordquist  
William Sherry  
Andrew Wagner  
Kurt Zahnle  
Elaine Zeiger  
Steven Zitowsky

### 200–499 hours

Eric Ahlgren  
Robert Andresen  
Robert Andrini  
Jan Marie Aramini  
John Balaban  
Sandra Bauer

Gloria Berkwits  
Robert Boswell  
Theresa Boswell  
Joan Bruchman  
Joseph Cablk  
Robert Cantu  
Lei-Lani Chan  
James Costello  
Edith Dervin  
Gary Drimmer  
John Dunn  
James Durham  
Thomas Durica  
Glenn Gabanski  
Cynthia Garraway  
Arlene Ghiron  
Renee Goddijn  
Soffia Kuehner Gray  
Gayle Guzik  
Mary Harland  
Mattie Harris  
Joyce Hecht  
Ruthann Heidgerken  
Aaron Heuer  
Dan Horwitz  
Jeff Hoswell  
Gerald Hough  
Lisa Hung  
James Kase  
Kelsey Keaton  
Thomas Kerstann  
Mary Ann Khan  
Arlene Koziol  
Milton Levin  
Loretta Long  
Jack MacDonald  
Lettie McSpadden  
Daniel Melone  
Lenore Melzer  
Beverly Meyer  
Jacob Meyer  
John Morris  
John Nordloh  
J. Claire Odland  
Marie Orendach  
Michael Padilla  
Stephen Parshall

Angelina Patti  
James Piekarczyk  
Anita Punkay  
Amanda Robinson  
Judith Rom  
Antonella Russo  
Jay Samstag  
Nina Sandlin  
John Schmadeke  
Annette Schmit  
Thelma Schwartz <sup>A</sup>  
Monica Sentoff  
Stephen Sentoff  
Terri Sinnott  
Beth Spencer  
Robert Spieler  
James Stola  
Lisa Stringer  
Grace Takata  
Darren Vilmin  
Phyllis Walden  
Jane Yakushiji  
William Zandrew  
Howard Zar



Docent Ellis Caspary leads a tour of *The Ancient Americas*. He is among 535 individuals who volunteered at the Museum in 2013. Together, they gifted 67,500 hours of service—the equivalent of thirty-seven full-time employees. In addition to leading tours, Mr. Caspary volunteers for Regenstein Conservator for Pacific Anthropology J. P. Brown, extracting information from CT scans of mummies. In 2013, he contributed more than 500 hours of service. Thank you, Ellis and all our volunteers!

## Commemorative gifts

*The following donors made gifts to The Field Museum in the name of a friend or loved one.*

### In Memory

Liam Kevin Aivazia

*Dr. Aram Aivazian, Mr. and Mrs. John Alexanian, Mr. and Mrs. William Cote, Nairi Krikorian and Rafi Krikorian, Mr. Michael Marcotte, Professor Harvey Shear, and Mr. and Mrs. George Wesolowsky*

Roger Burckert

*Mr. and Mrs. Richard L. Benson*

Harvey Epstein

*Mr. and Mrs. Harry S. Epstein*

Their beloved brother

*Mr. and Mrs. Albert Frank*

William Angus MacAulay

*Ms. Jennifer Rosinski, Ms. Sarah Utley, and Mr. Angus MacAulay*

Hugo Melvoin<sup>TA</sup>

*Mr. and Mrs. Frank D. Mayer Jr.*

Lee A. Mishkin

*Mr. Cary Tranter*

Her late husband

*Mrs. Frank J. Mooney*

John Nordloh

*Mr. and Mrs. Edward Ahlfors, Dr. and Mrs. David H. Bauman, Ms. Hilda R. Cavanaugh, Dr. and Mrs. Patrick J. Cavanaugh, Ms. Marilyn Conklin, Mr. and Mrs. Mark Conroy, Mr. and Mrs. Robert H. Coyier, Mr. and Mrs. James W. Damsma, Ms. Margaret A. Duffner, Ms. Jennifer Feather, Mr. and Mrs. David A. Flom, Mrs. Ann Frutkin, Mr. John Galkowski and Ms. Kathryn West, Mr. and Mrs. David R. Goetz Jr., Ms. Joyce E. Hecht, Mr. and Mrs. Edward M. Hipke, Mr. and Mrs. Robert H. Jenkins, Ms. Patricia Jiganti, Mr. and Mrs. Les Klevay, Mr. and Mrs. John S. Markwalter, Mrs. Beverly M. Meyer, Mr. and Mrs. Bernard J. Miller Jr., Mr. and Mrs. Robert J. Rhyner, Mr. Jules N. Stiffel, Mr. and Mrs. Gregory A. Tieder, Mr. and Mrs. John R. Weiss, and Ms. Meredith Wotman*

Dr. Gertrude Novak

*Ms. Marietta Cahn and Mr. John L. E. Seidler*

Robert Rodgers

*Ms. Beverly J. Rodgers*

Olive Sherman

*Mr. and Mrs. Richard L. Bell, Mr. Lee Sherman, and Mr. and Mrs. Matthew A. Smeenge*

Jane Thain

*Ms. Esther S. Altschul, Robert and Ruth Berns, Ms. Harriet S. Clowes, Mr. and Mrs. Bob Connor, Mr. John H. Dunn, Mrs. Elaine Fiffer, Ms. Barbara S. Graves, Mrs. Penny M. Hodges, Mrs. John A. Holabird Jr., Mrs. Colleen Kakarakis, Mr. and Mrs. Kenneth R. Mullin, Mr. and Mrs. Ward J. Premer, and Ms. Sarah S. Walter*

Dr. Charles B. Van Gorder

*Mr. and Mrs. Dennis Clauss*

Nancy Wald

*Mr. Albert Wald*

Irene Wilzak

*Mr. and Ms. Joseph F. Honor*

Dvorah Yastrow

*Mrs. Roslyn Grodzin and Mr. and Mrs. E. Donald Heymann*

Edward Yastrow

*Ms. Susan S. Adler, Mr. and Mrs. Henry Arenberg, Mr. and Mrs. Joseph Gagliardo, Mrs. Roslyn Grodzin, Laner Muchin Dombrow Becker Levin and Tomlinberg Ltd., Mr. and Mrs. M. J. Padorr, Mr. and Mrs. Kenneth Pell, John and Shirley Schlossman, Mr. and Mrs. Rick Scott, Mr. and Mrs. Steven Shifrin, Dr. Alvin D. Star, Ms. Karen Ury, Mr. and Mrs. Richard Washer, and Mr. and Mrs. Shelby Yastrow*

### In Honor

Alvaro del Campo

*Dr. Michael Allgeia*

Michael Ferro's<sup>†</sup> birthday

*Mr. James A. Star and Mrs. Sara Crown-Star*

Al and Sharleene Frank

*Ms. Mary M. Schmick*

Tim Frisbie

*Mrs. Lisa Soard*

Mr. Charles L. Katzenmeyer<sup>E</sup>

*Mr. and Mrs. John T. Doherty*

Jeffrey Korzenik

*Illinois CPA Foundation and South Suburban Small Business Assoc.*

Robert B. Loveman<sup>TA</sup>

*Mr. and Mrs. Steven A. Rosen*

Dr. Charles Nadler

*Mrs. Roy I. Warshawsky*

Chester and Patricia Rozanski's fiftieth wedding anniversary

*Anonymous*

George Shipperley

*Ms. Kathryn Ray*

Bill Simpson<sup>E</sup>

*Mr. and Mrs. Walter B. Watson Jr.*

<sup>†</sup> Trustee   <sup>A</sup> Edward E. Ayer Legacy Society donor   <sup>C</sup> Corporate Relations Program member

<sup>D</sup> Deceased   <sup>E</sup> Field Museum employee   <sup>N</sup> New Trustee



## Gifted collections

*Through generous gifts of objects and specimens, The Field Museum's collections have grown to become an indispensable scientific resource for scholars around the world. The Museum acknowledges the following donors who made gifts in 2013 to enhance the institution's collections.*

### Anthropological collections

Dean E. Arnold  
 Alan Brodie <sup>D</sup>  
 James Ethridge  
 Marshall Gover  
 David E. Howard  
 Withrow Meeker  
 Betty Starr  
 John Terrell <sup>E</sup>  
 Mary Stevenson Thieme  
 John Varnum  
 Cynthia Weill

### Botanical collections

Adviesbureau voor Bryologie  
 en Lichenologie  
 Agriculture and Agri-Food Canada  
 California Academy of Sciences  
 Complutense University of Madrid  
 Duke University  
 Theodore Esslinger  
 Eszterházy Károly College  
 James G. Graham  
 Harvard University  
 Herbario CIAT  
 Hiroshima University  
 Instituto de Botânica, Brazil  
 Landcare Research  
 Thorsten Lumbsch <sup>E</sup>  
 Missouri Botanical Garden  
 Muséum national d'Histoire  
 naturelle, Paris  
 National Museum of Nature and  
 Science, Tokyo  
 National Museums of Kenya  
 National Tropical Botanical  
 Garden, Hawaii  
 Natural History Museum, London  
 New York Botanical Garden

The Ohio State University  
 Oregon State University  
 Oregon State University, J. C. Braly  
 Natural History Collection  
 Pfalzmuseum für Naturkunde  
 R. M. Schuster  
 John Silba  
 Singapore Botanic Gardens  
 Swedish Museum of Natural History  
 Tasmanian Museum and Art Gallery  
 Unitec Institute of Technology  
 University of Campinas  
 University of Bergen  
 University of Graz  
 University of New Hampshire  
 University of São Paulo  
 University of Texas at Austin  
 University of Tsukuba  
 University of Washington  
 V. L. Komarov Botanical Institute

### Geological collections

#### Physical geology

Terry Boudreaux  
 Marlin D. Cilz

#### Fossil invertebrates

Irene Broede  
 Lance Grande <sup>E</sup>  
 Paul Mayer <sup>E</sup>  
 Tim Nelson  
 Karen Nordquist  
 Travis Vivian  
 Jack Wittry

#### Paleobotany

Rinchen Barsbold, Mongolian  
 Academy of Sciences  
 David T. Carlson  
 Robert Sula  
 Jack Wittry

### Zoological collections

#### Amphibians and reptiles

Danny Balet  
 Lauren Brown

Gary Glowacki  
 Dr. Lawrence R. Heaney <sup>E</sup>  
 Dr. Richard King  
 James McCranie  
 Alan Resetar <sup>E</sup>

#### Birds

Tony Abraham  
 Nazia Akhter  
 Daniella Amendola  
 Bob Andrini  
 Kathy Andrini  
 Rietje Angkuw  
 Jeff Armstrong  
 Robin Austyko  
 Tim Balassie  
 John Bates <sup>E</sup>  
 Bay Beach Wildlife Sanctuary  
 Karen Bean <sup>E</sup>  
 Chuck Berman  
 Julie Biedess  
 Carol Boose  
 Robert Boswell  
 Mary Boylon  
 Nancy Bradt  
 Anna Braum  
 Daniel Brinkmeier  
 Barbara Brown <sup>E</sup>  
 Terry Bruce <sup>E</sup>  
 Joan Bruchman  
 Barbara Bush  
 Eric Buttry  
 Robin Carlson  
 Kevin Carroll  
 Pat Carson  
 George Chavez <sup>E</sup>  
 Suzanne Checchia  
 Chicago Bird Collision Monitors  
 Colorado Parks and Wildlife  
 Ezekiel Cordeiro  
 Ruta Cosimo  
 Mark Covell  
 Linda Cox  
 Susan Crane  
 Kelly Cronin

Nick Crouch  
 Kate Cummings  
 Nate Cvetas  
 Luke Dahlberg  
 I. Angela Daidone  
 Donnie Dann  
 Gary Davis  
 Therese Davis  
 Mike Dement  
 Mark DeSantis  
 Jessica Dexter  
 Charles D'laroy  
 David Dolak  
 Jennifer Domeck  
 Kelly Dougherty  
 Stephen Doyle  
 DuPage Airport  
 Beth DuPont  
 Glenna Eaves  
 K. Eck  
 Suzanne Edwards  
 Josh Engel <sup>E</sup>  
 Eric Erickson  
 Marty Farrington  
 Sandy Fejt  
 Kevin Feldheim <sup>E</sup>  
 Diane Fieri  
 Flint Creek Wildlife Rehabilitation  
 Rob Frye  
 Glenn Gabanski  
 Margaret Gawronski  
 Matt Gies  
 Matthew Girard  
 Ian Glasspool <sup>E</sup>  
 Thomas Gnoske <sup>E</sup>  
 Scott Goedert  
 Ingrid Gould  
 Mark Grant  
 Ed Graskamp  
 Cindy Gray  
 H. Griffin  
 David Grimes  
 Aaron Gyllenhaal  
 Ethan Gyllenhaal  
 Suzanne Hackbarth

Diane Hansen  
 Mary Hennen <sup>E</sup>  
 Andy Hershberger  
 William Heyn  
 Libby Hill  
 Jennifer Hoffman  
 Robert Hughes  
 Janice Humphrey  
 Robert Jaden  
 James Jagiello  
 Kristen Jensen  
 David Johnson  
 Jessica Johnson  
 Lin Johnston  
 Chris Kadow-Dougherty  
 Kayleigh Kaeffner  
 John Kaiser  
 Neil Kanemoto  
 Scott Kazmierczak  
 John Kelly  
 Julian Kerbis <sup>E</sup>  
 Carol Kimbrell  
 Albet Klamp  
 Rachel Kleban  
 Larry Krutulis  
 Scott Kuipers  
 Josephine Kujawa  
 Ruth Kurczewski  
 Kelly Kwasniewski  
 Albert Legzdins  
 Linda Lewelling  
 Gloria Lowther  
 Peter Lowther <sup>E</sup>  
 Mary Loye  
 Peggy Macnamara <sup>E</sup>  
 Will Marcyniuk  
 Ben Marks <sup>E</sup>  
 Annette Mastre  
 June Matayoshi  
 Meredith Matthews  
 Trish May  
 Mira McCombe  
 Lynne Mecum  
 Mary Lou Mellon  
 Julia Meredith

Mark Miller  
 Minnesota Department of  
 Natural Resources  
 Linda Mirabelli  
 Jeff Miro  
 Nancy Mores  
 Donna Motherway  
 Laura Muraoka  
 A. Nichols  
 Lora Nickels <sup>E</sup>  
 Cathy Patrick  
 Bernadette Payne  
 Arthur Pearson  
 Dorothy Pesch  
 Renee Peterson  
 John Phelps <sup>E</sup>  
 Candace Pierce  
 Dayani Pieri  
 Scott Plant  
 Elizabeth Pollack  
 Marina Post  
 Annette Prince  
 Robert Prosise  
 Leon Provencher  
 Ken Purcell  
 Michael Quigley  
 M. Quiroz  
 Teri Radke  
 Andrea Reasoner  
 Lisa Rest  
 Rawlins Riles  
 Gerri Rode  
 Victor Rodriguez  
 Bob Rogers  
 Mary Anne Rogers  
 Natalio Romero  
 Laurel Ross <sup>E</sup>  
 Lindsey Rowland  
 Robert Russ  
 Mike Sackheiro  
 Jaquelen Samuel  
 Nancy Sanders  
 Kevin Sapp  
 Tiffany Saunders  
 Mike Seelfo

Sigrid Schmidt  
 Alma Schrage  
 Eric Schumacher  
 Alicia Seghi  
 Brad Semel  
 Barbara Shaw  
 Michael Shelton  
 Akiko Shinya <sup>E</sup>  
 Katie Sigmon  
 Jim Sinegal  
 Tammi Sinegal  
 Kimberly Singleton  
 Leo Smith <sup>E</sup>  
 Natalie Smith  
 F. Stack  
 David Stagman  
 James Steffen  
 Jill Stites  
 Douglas Stotz <sup>E</sup>  
 Adam Strauss  
 Celia Strauss  
 Kalman Strauss  
 Gail Strures  
 Jan Sutkus  
 Kevin Swagel <sup>E</sup>  
 Sandy Swanson  
 Flora Swearingen  
 Betty Sweetland  
 Barbara Sydow  
 Amy Tavolino  
 Markas Thorson  
 Jim Tibensky  
 Gamaliel Torres  
 Nathan Trautenberg  
 Treasure Coast Wildlife Center  
 Mike Trinchitella  
 Suzanne Turner  
 United States Department of  
 Agriculture—Chicago Midway /  
 O'Hare International Airports  
 Chris Van Wassenhove  
 Carroll Veidel  
 Victoria Velinski  
 Denise Verret  
 Suzanne Verret  
 Anita Victorn

Janet Voight <sup>E</sup>  
 Sarah Von Fremd  
 Tyana Wachter <sup>E</sup>  
 Stuart Wagenius  
 David Walker  
 Ellen Walker  
 Stephanie Ware <sup>E</sup>  
 Mark Westneat <sup>E</sup>  
 S. White  
 Lindsay Wilkes  
 David Willard <sup>E</sup>  
 Chris Williamson  
 Carrie Willingham  
 Willowbrook Wildlife Center  
 Max Witynski  
 Sandy Woltman  
 Scott Woltman  
 Ann Woodward  
 Benjamin Wright  
 Amanda Zeigler  
 Dave Zerlin

#### **Fishes**

Anton De Kom University of  
 Suriname  
 Windsor Aguirre  
 Anna Altschwager <sup>E</sup>  
 The American University in Cairo  
 Auburn University Fish Collection  
 Matthew P. Davis <sup>E</sup>  
 The Field Museum Exhibitions  
 Department  
 John G. Shedd Aquarium  
 Museum of Zoology of the  
 University of São Paulo  
 Akiko Shinya <sup>E</sup>  
 Smithsonian Institution  
 The University of Kansas  
 Mark W. Westneat <sup>E</sup>

#### **Insects**

Cheryl Barr  
 Crystal Boyd  
 Dr. Mariana R. ChaniPosse  
 Dr. Estevam L. Cruz da Silva  
 Dr. Carl W. Dick

<sup>T</sup> Trustee    <sup>A</sup> Edward E. Ayer Legacy Society donor    <sup>C</sup> Corporate Relations Program member

<sup>D</sup> Deceased    <sup>E</sup> Field Museum employee    <sup>N</sup> New Trustee

Dr. Katharina Dittmar

Petr Dolejs

Randy Durland

Dr. Ilya Enushchenko

Dr. Gustavo E. Flores

Dr. Steven M. Goodman <sup>E</sup>

Dr. Robert W. Hamilton

Mr. Peter Hlavác

Dr. Hans Klompen

Astri Leroy

Dr. Arno A. Lise

Dr. John T. Longino

Mr. David Matusik

Dr. Sean B. Menke

Dr. Paulo C. Motta

Dr. Bruce D. Patterson <sup>E</sup>

Dr. Matt J. Paulsen

Dr. Derek S. Sikes

Dr. Michael Staab

Mr. Paul N. Thomas

Dr. Jason D. Weckstein <sup>E</sup>

John Hart

Larry Heaney <sup>E</sup>M. Hennen <sup>E</sup>

Patty Johnson

Kelly Larson

Charles Leete

Peter E. Lowther <sup>E</sup>Jillian Mayotte <sup>E</sup>

Dennis Meritt

Bill Murphy

Andria Niedzielski

Bruce Patterson <sup>E</sup>

Angelina Patti

Joy Peplinski

Dorthy Pesch

A. Prince

M. Quigley

J. Raber

Mike Reed

D. Richards

M. J. S. Richards

Arrah Jean Shumaker

Lauren Smith

Dave Stagman

Bill Stanley <sup>E</sup>Douglas Stotz <sup>E</sup>

Darrin M. Swagel

Kevin Swagel <sup>E</sup>

Yesenia Taveras

Suzanne Turner

Issac Walton

D. E. Willard <sup>E</sup>**Invertebrates**

Thomas G. Anton

Rüdiger Bieler <sup>E</sup>

Rachel Collin

Bunjamin Dharma

Jochen Gerber <sup>E</sup>

Jozef Grego

Amandine Nunes-Jorge

Timothy A. Rawlings

Manuel J. Tenorio

**Mammals**Mark Alvey <sup>E</sup>

Bob Andrini

Rebecca Banasiak <sup>E</sup>

Dan Brinkmeier

Werner Buol

Sherry Erickson

Frank Frelka

Matt Goebel

Mike Gornick

Anna E. Goldman <sup>E</sup>

Joel Greenberg





If you feel an error has been made in presenting this honor roll, please contact the Office of Institutional Advancement at [annualreport@fieldmuseum.org](mailto:annualreport@fieldmuseum.org).

For a list of in-kind contributions to the collections, please visit [fieldmuseum.org/about/annual-reports](http://fieldmuseum.org/about/annual-reports).

Producer: Charles L. Katzenmeyer  
Project manager and editor: Margaret Neeley

Contributors: Mark Alvey, Gretchen Baker, Eduarda Briseno, Karen Bean, Jean Cattell, Beth Crownover, Eve Gaus, Emily Graslie, Isabelle Heyward, Jaap Hoogstraten, Meghan Jorgensen, Meg Keslosky, Dawn Martin, Caroline Parsons, Natalie Vanoverbeke, John Weinstein, and Laura Woods

Designer: Bark Design, Chicago

Printer: Ace Graphics, Naperville

p. 32: photographer Margaret Neeley; p. 37: photographer Alvaro del Campo; p. 38: GN91849\_177d, photographer Karen Bean; p. 42: (left) GN91881\_061d, photographer Karen Bean, (center) GN91881\_143d, photographer Karen Bean, (right) GN91881\_073d, photographer Karen Bean; p. 43: GN91916\_043\_46Ad; p. 44: photographer Cheri Eisenberg; p. 45: GN91892\_021d, photographer Karen Bean; p. 47: GN91962\_013Bd, and p. 48: GN91969\_147d, photographer Karen Bean.

© 2014 The Field Museum, all rights reserved

Electronic edition: [fieldmuseum.org/about/annual-reports](http://fieldmuseum.org/about/annual-reports)

All photographs are © The Field Museum, photographer John Weinstein, unless otherwise noted. Cover: (top) GN91967\_001Bd, (bottom) © The Werner Company, June 1893; p. 2: GN91976\_046Ad; p. 7: GN91965\_034Ad; p. 8: (left) Z95213\_025d, (right) photographer Jamie Kelly; p. 9: photographer Juan Larraín, p. 11: GN91970\_081Ad; p. 12: (top left) photograph by Peter Makovicky, (top right) illustrator Jorge Gonzales, (bottom) © Zaleth Cordero; p. 13: (top) photographer Petra Sierwald, (below) Z95216\_01d, photographer Karen Bean; p. 15: DSC\_6154\_Helo\_C2\_ADC, photographer Alvaro del Campo; p. 16: (left) © William Trujillo, (right) 22284, photographer Jessica Canas; p. 17: (left) GN91818\_265d, (right) © Paul Martin; p. 19: GN91968\_071\_72Ad; p. 20: photographer Eve Gaus; p. 21: (top) photographer Tom Campbell, (bottom) GN91774\_082d; p. 23: GN91929\_044d; p. 24: GN91764\_098d; p. 25: (left) GN91874\_214d, (inset) GN91874\_039Bd, (right) Exhibitions Department; p. 26: GN91832\_028d; p. 28: © the Chicago Cubs, photographer Stephen Green;

<sup>T</sup> Trustee    <sup>A</sup> Edward E. Ayer Legacy Society donor    <sup>C</sup> Corporate Relations Program member

<sup>D</sup> Deceased    <sup>E</sup> Field Museum employee    <sup>N</sup> New Trustee



1400 South Lake Shore Drive ■ Chicago, Illinois 60605-2496 ■ [fieldmuseum.org](http://fieldmuseum.org)

---



Thank You.