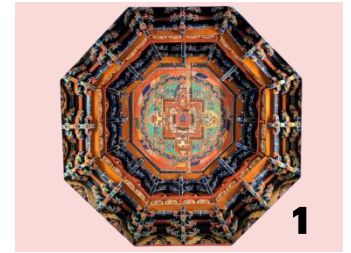




## Scavenger Hunt

### UPPER LEVEL

This painted wood dome from the Kangxi Period (1661-1722 AD) from the Qing Dynasty (1644-1911 AD) is from the ceiling of a Tibetan Buddhist temple. Domes like this one were designed to be visualized as a three dimensional palace of a deity surrounded by religious symbols helping guide the visualizer along the path to enlightenment.



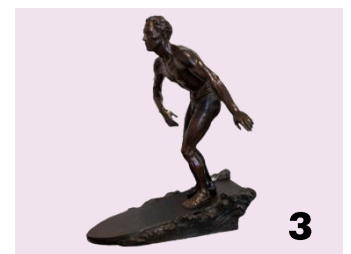
**What are these geometric designs called?** \_\_\_\_\_

This ornamental pendant is important to the Maori people of New Zealand. They can be made out of various substances, including stone, wood, or plastic, but most often from greenstone or jade known as pounamu. The pendant's name translates loosely to a carved human figurine worn around the neck.



**What is this pendant called in Maori?** \_\_\_\_\_

This statue is one of 27 life-size statues created by Malvina Hoffman for the Field Museum's Hall of Man in the 1930's. Since then, it has been reimagined to challenge both historical and contemporary understandings of racial identity. This sculpture depicts a man surfing, a sport that was first seen in cave paintings from the 12th Century.



**What island(s) does this man come from?** \_\_\_\_\_

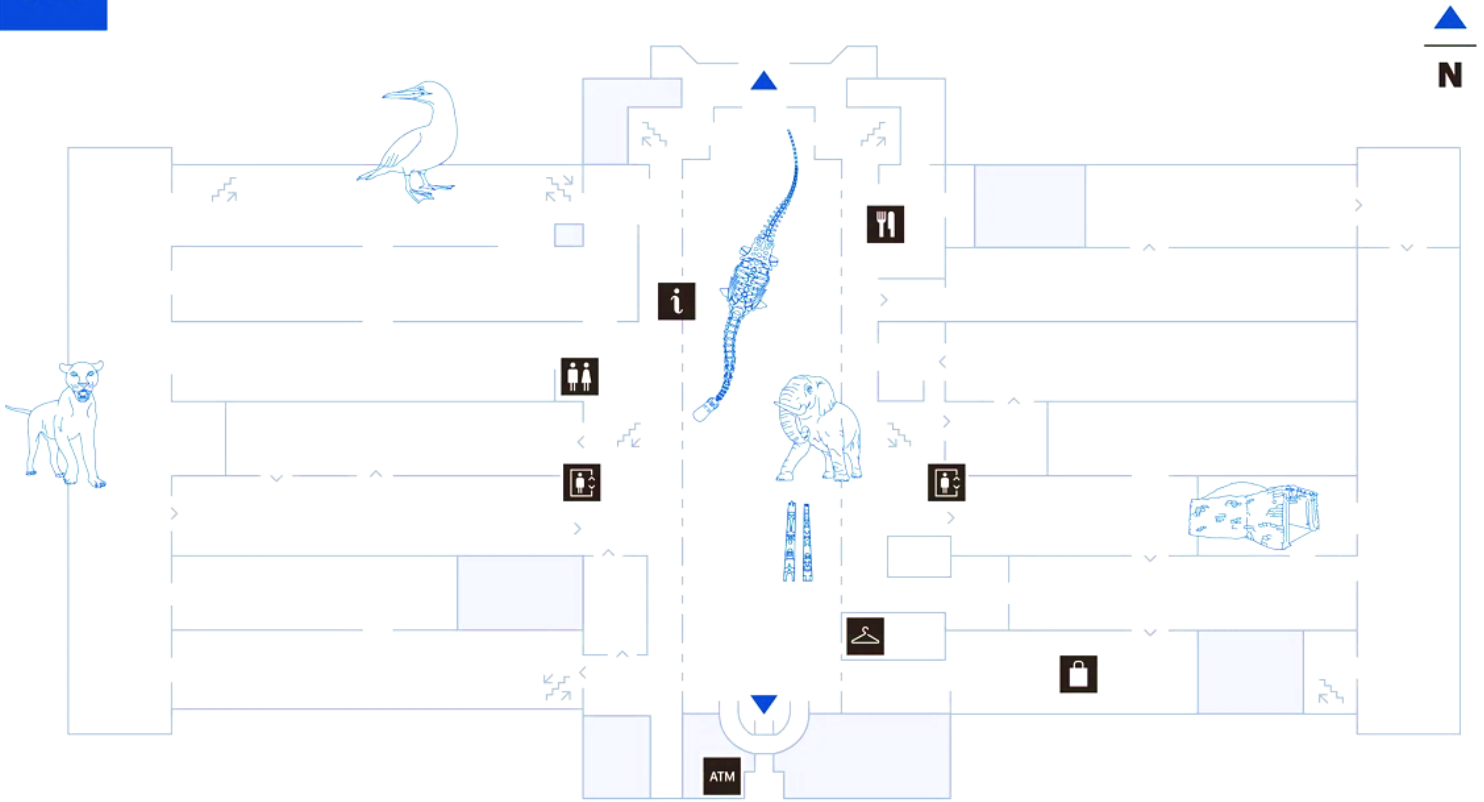
## Special Events

**4** *Chicago's Legacy Hula*  
New Exhibition  
Opens May 26, 2023

**5** *Cyrus Tang Hall of China*  
Ticketed Exhibition  
FREE every Tuesday in May 2023

# M

## Main Level



# U

## Upper Level

