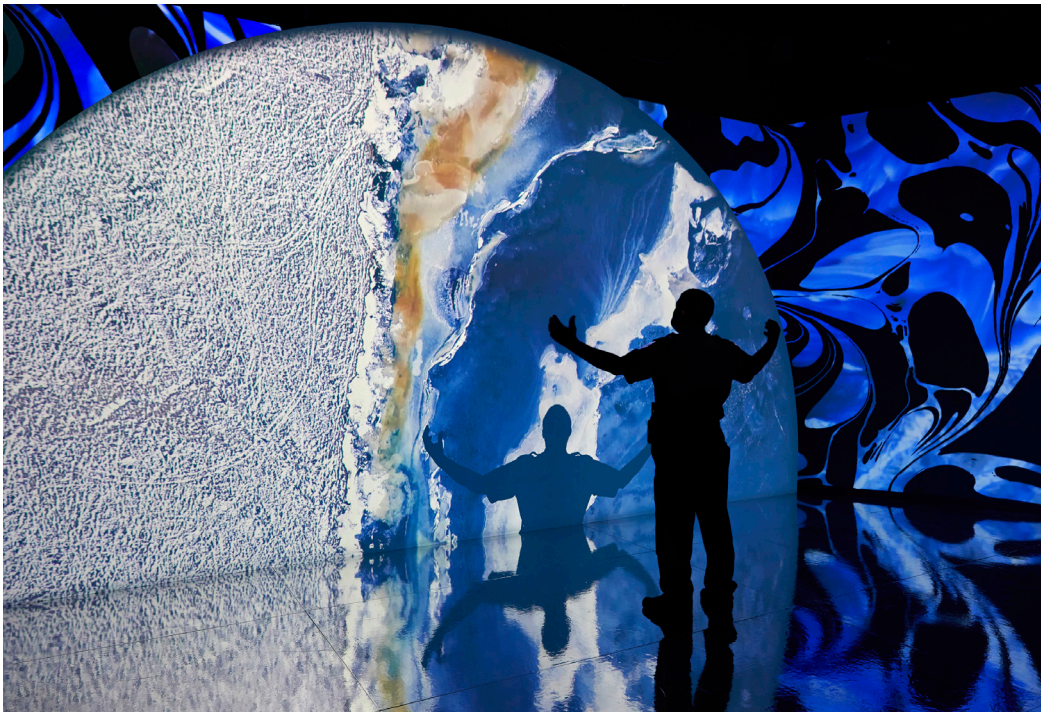


Wild Color



Exhibition Overview

Delve into the color spectrum like never before as you make your way through immersive rooms, each representing a color of the rainbow. Color-saturated spaces awaken the senses with vibrant specimens, photo-worthy displays, and shifting soundscapes. Marvel at the beauty and power of color in the natural world.



Red and Orange

Begin your journey through the color spectrum among the rich, luxurious hues of rubies and garnets. See how nature uses vivid red in the warning colors of king snakes and velvet ants—and also how red attracts through the shades of fruits and flowers. A cornucopia of bright orange shells and birds follows.



Yellow and Green

Among yellow dandelions, bees, field mice, and butterflies, go ahead and “try on” butterfly wings to see how you look. This sunny space gives way to a forest of green leaves and the creatures that camouflage themselves among them.

Blue and Purple

A centerpiece of the exhibition is the blue multimedia space, where the deep blue seas and skies surround you. Investigate how birds, butterflies, and sea creatures create blue with microscopic light-bending textures, then marvel at vividly purple animals and plants.

Ultraviolet

Beyond the range of human sight, there’s a violet hue of greater energy: ultraviolet. Explore and compare the dramatic color shifts of animals, plants, and minerals under UV lights.

Black and White

Experience the extremes of dark and light—from birds with feathers so black they absorb nearly all light, to the reflective white underside of a silver fern.



Wildly Colorful

The finale of specimens and media brings together the entire rainbow to answer some big questions: Why is nature so colorful at times? How can plants and animals change color? How do we make colors from nature? And how can we connect to color in nature?



Exhibition Specifications

Size

5,000 ft2 (465 m2)

Ceiling height

12 ft (3.66 m)

Security

Exhibition requires a limited-access, lockable space with security staff during public hours

Shipping

One-way, inbound, paid by host venue

Languages

All text in English and Spanish; language may be converted by host venues

Rental fee

Please inquire

Features

- Nearly 200 Zoology, Botany, and Geology specimens
- 16 atmospheric murals, 2 ambient scent stations
- 5 tactile interactive elements
- 3 videos and 8 soundscapes
- 4+ photo ops

Contact

travelingexh@fieldmuseum.org

312.665.7119

312.665.7311

www.fieldmuseum.org/about/traveling-exhibitions