

FIE
MUSEUM
LD.

20



22

Annual Report
to Donors

ON THE COVER

The *Native Truths: Our Voices, Our Stories* exhibition allows visitors to connect with diverse Native stories through art, historic collections, and even the exhibition hall itself. The exhibition design features copper (background) and birch bark (foreground), two materials important to many Native American tribes.

DEAR FRIENDS,

This report contains highlights of our work in 2022. As you will see, so much of what we do is brought to life by an extraordinary community of donors, none a more dedicated friend to the Field Museum than our late Board Chair W. Rockwell Wirtz, whose leadership and philanthropy inspired the best of our work. The Museum mourns his loss, remembers his legacy, and strives to meet the example he set.

Under Rocky's thoughtful leadership, in 2022 the Trustees of the Field Museum approved a new mission statement to emphasize a responsibility to our shared planet and each other: *The Field Museum connects all of us to the natural world and the human story.*

This mission is at the heart of a new Strategic Plan, which prioritizes reimagining our galleries of Africa and ancient Egypt, strengthening our digital presence, engaging more of the communities we serve, and rededicating ourselves to research and environmental conservation that is the core of our academic enterprise.

In 2022, within the Museum and across the globe, Field Museum scientists oversaw more than 200 research projects. Among many breakthroughs, they discovered that birds are laying eggs earlier due to climate change; *Spinosaurus* was aquatic; a wildflower thought to be extinct still blooms in Peru; and asteroids sometimes spin off pebbles. Alongside these discoveries, we saw the return of familiar Museum audiences—students, tourists, and families—following several years of pandemic-affected attendance.

We are grateful for your tremendous support of the Field Museum and look forward to sharing more with you in the months to come. Thank you.

Sincerely,



A handwritten signature in black ink that reads "Julian Siggers".

Julian Siggers, PhD
President and CEO



A handwritten signature in black ink that reads "Smehta".

Siddharth (Bobby) Mehta
Board Chair

DISCOVERY



02

IMPACT



14

HONOR ROLL



26



DISCOVERY

150 Field Museum scientists fuel discovery for the global scientific community, in addition to the Museum's donors, members, and visitors. Your support enables them to explore the Earth and its peoples, and care for the Museum's 40 million objects and specimens.



A SUCCESSFUL RETURN TO FIELDWORK

A team of researchers—including Curator John Bates, PhD—embarked on a month-long Antarctic trip by sailboat around the Falklands, Antarctic Peninsula, South Shetland Islands, and South Georgia Island. Their study focused on penguin colonies of nine different species, from which they collected samples for a spectrum of genetic and dietary research. These samples are expanding upon prior collecting by several of the team's members and serve as a basis for a graduate dissertation and thesis. The trip was funded by a grant from the museum's Robert A. Pritzker Center for Meteoritics and Polar Studies.

(Opposite) Chinstrap Penguin (*Pygoscelis antarcticus*) nesting site, Gerlashe Island, Antarctic Peninsula.

(Above) King Penguin (*Aptenodytes patagonica*) Colony, St. Andrews Bay, South Georgia Island.



NEW SPECIES OF FROG DISCOVERED IN THE AMAZON

A team of Field Museum researchers made strides in the study of a tiny, elusive burrowing frog native to the Amazon. Because *Synapturanus danta* is so small and lives underground, it can be extremely difficult to find despite being easily recognized for its distinctive, tapir-like head. Thanks to the help of local guides, an international team of researchers found the frog and gave it an official scientific name and description. Researchers said that studying the *Synapturanus danta* may be important to habitat monitoring and rainforest conservation efforts.





RESEARCHERS RE-DISCOVER AN EXTINCT FLOWER

Centinela ("Sentinel"), an isolated mountain ridge on the coast of Ecuador, is a biodiversity hotspot with several endemic species. Unfortunately, it was cleared for agriculture in the early 1990s and much of its unique biodiversity was lost. The area remained largely unstudied until a team funded by the Field Museum's Women's Board and Grainger Bioinformatics Center traveled to Centinela and discovered numerous, though small, healthy forest remnants and plant specimens, including the flag-bearer of the Centinelan Extinction, *Gasteranthus extinctus*. This herb with stunning neon orange flowers was last collected 37 years ago and named after its own presumed extinction.

FROM THE SEAFLOOR TO THE SEASHORE

Associate Curator Janet Voight, PhD, collaborated with the Field's artist-in-residence Peggy Macnamara on a vividly illustrated look at Voight's marine research. *From the Seashore to the Seafloor: An Illustrated Tour of Sandy Beaches, Kelp Forests, Coral Reefs, and Life in the Ocean's Depths* brings the wonder she experienced on her twenty-two research cruises to readers of all ages.

Get your copy of *From the Seashore to the Seafloor* at the Field Museum Store or online at store.fieldmuseum.org.

05



SCIENTISTS DISCOVER THE FIRST EVIDENCE OF FRUIT-EATING

In 2022, a study in *eLife* co-authored by Jingmai O'Connor, PhD, the Field's Associate Curator of Fossil Reptiles, details the first evidence of fruit consumption by any animal. In this case, the evidence comes from a specimen of the fossil bird, *Jeholornis*, that was found with whole fossil seeds in its stomach, suggesting that it ate whole fruits rather than just the seeds. Fruit-bearing plants evolved relatively recently in Earth's history, and this new fossil evidence provides a timeline for how modern plants were dispersed around the world, deepening scientists' understanding of the plant-animal relationship.

(Background) The Cretaceous bird *Jeholornis* helped fruit-bearing plants take over the world by spreading the seeds in its droppings.



LARGE COLLECTION OF FOSSIL METEORITES GIFTED TO THE MUSEUM

A collection of more than 115 fossil meteorites was contributed to the Field Museum by The Boudreaux Family. These fossils are remnants of asteroid collisions which occurred 467 million years ago. The meteorites fell to earth, becoming buried and later fossilizing. Studying this collection will give scientists valuable insights into the development and evolution of our Solar System.

(Above) Maria Valdes, PhD, and Jim Holstein with specimens from the Boudreaux fossil meteorite collection.

1,127,606

NEW RECORDS ADDED TO COLLECTIONS DATABASE

17,724

SPECIMENS DIGITIZED DURING THE WEDIGBIO COMMUNITY SCIENCE EVENT

620

NEW BOOKS ACQUIRED BY THE LIBRARY

RATS GROW BIGGER ON THE RAINIER SIDE OF MOUNTAINS

Ecogeographic rules, which dictate size and shape variations within species due to external factors, are fairly well-understood by researchers for many types of habitats. However, there is a lack of established rules for how animals respond to local climates created by mountains. Research Associate Noé de la Sancha, PhD, and his colleagues conducted a study of mice in the Andes region to explore this question. The research team found that the “rain shadow” effect—which causes hot, moist air to rise up the windward side, depositing precipitation as it moves up the mountain, and resulting in a desertification effect as cool, dry air descends on the other side—causes consistent size variation in mice from similar locations.

(Below) *Abrothix hirta* from el Fundo Dan Martin in Valdivia, Chile. This species was found to have size variations within the same environment due to the rain shadow effect.



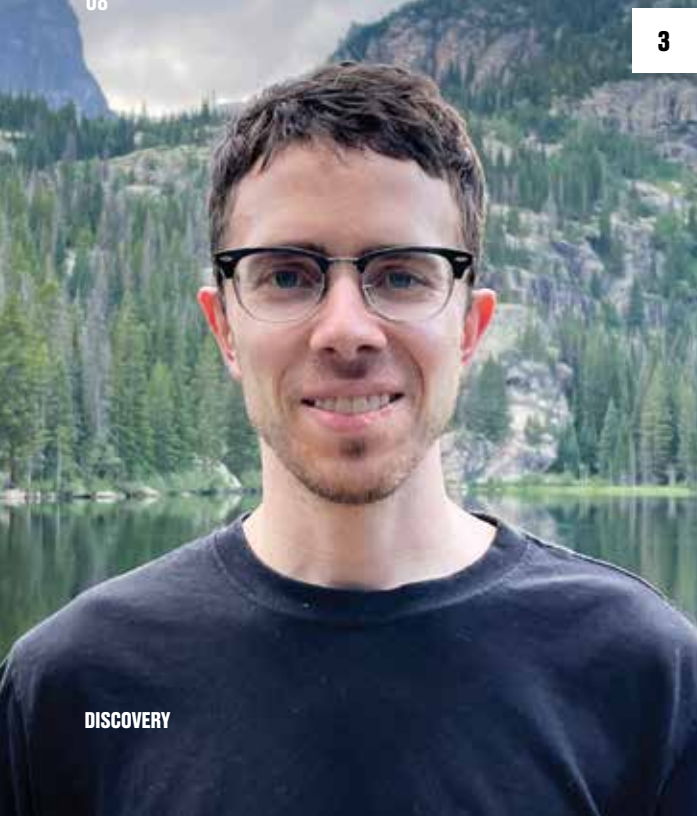
OUR NEW COLLECTION MANAGERS



1



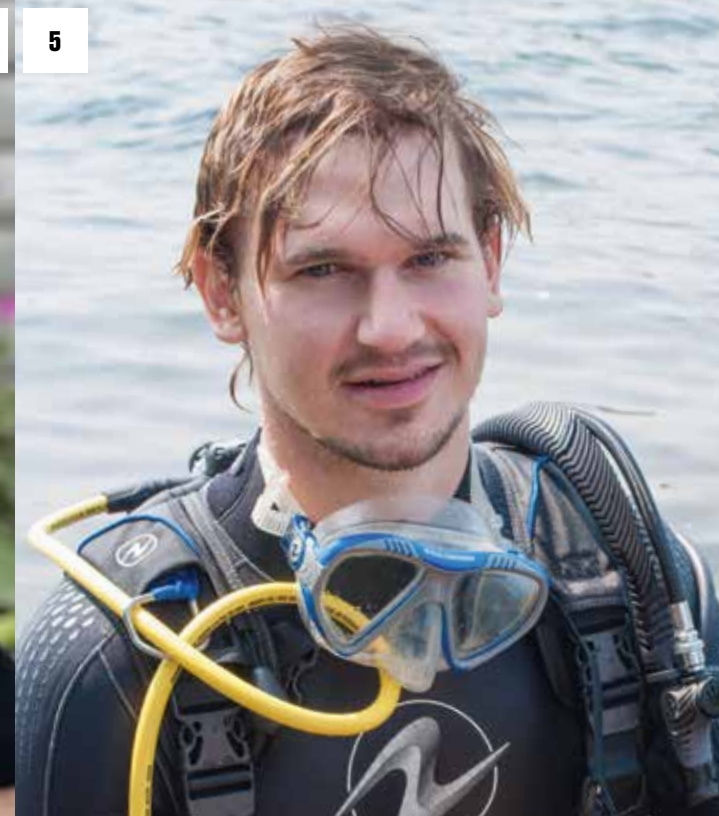
2



3



4



5

1 **MICHELLE BROWNLEE**

Anthropology

Michelle Brownlee was promoted to Anthropology Collections Manager for North America in late September 2022 after working on the *Native Truths: Our Voices, Our Stories* exhibition collections team and as an Anthropology Collections Assistant. In these roles, she has worked to connect Indigenous communities to their heritage and deliver the highest quality of care for the North American collections. Michelle has been a primary organizer of Indigenous Peoples' Day and Native American Heritage Month programs and initiatives at the Museum. She also serves on the Museum-wide DEAI Council. Prior to the Field Museum, she was an American Indian Museum Fellow at the Minnesota Historical Society; while earning her degree at the University of Minnesota Morris, she was a Native American Student Success Peer Mentor. She has conducted fieldwork at the Cahokia Mounds State Historic Site in southern Illinois and assisted the Hamline University Anthropology department faculty and Minnesota Indian Affairs staff with burial recovery efforts.

2 **RACHUNLIU "CHUN" KAMEI, PHD**

Amphibians and Reptiles

Rachunliu "Chun" Kamei joined the Field as Collections Manager of Amphibians and Reptiles. She is a Naga of the Rongmei tribe from the hills of Northeast India. She left her hometown at a young age for education, research, and eventual employment opportunities. She taught as an Assistant Professor at Delhi University for six years before pursuing a career in natural history. She received her PhD from the University of Delhi and served as a Marie Curie postdoctoral fellow at the Natural History Museum, London, focusing on caecilian amphibians from the northeast Indian region. Her field-based research on the caecilians (a group of legless amphibians) of northeast India resulted in the most comprehensive study of caecilians from any one region in Asia.

Her primary research interests are taxonomy and systematics of amphibians, reptiles and synbranchid eels of India. She is also committed to public outreach and the engagement of local communities in conservation.

3 **MICHAEL DONOVAN, PHD**

Paleobotany

Michael Donovan will join the Field as Collections Manager of Paleobotany in March 2024. He is currently Senior Collections Manager of Paleobotany and Paleoecology at the Cleveland Museum of Natural History, managing a collection similar to the Field's. Mike also holds appointments as Adjunct Assistant Professor, Department of Biology at Case Western Reserve University, and Research Collaborator at the Smithsonian National Museum of Natural History. He received his PhD in Geosciences from Pennsylvania State University in 2017. His research interests involve the evolution of food webs through time, principally focusing on the evolutionary and ecological responses of plants and herbivorous insects to major environmental perturbations, including mass extinctions and climate change. Mike is experienced in assembling a large team of volunteers and students to help further his collections management work in Cleveland, and has developed successful outreach programs in paleobotany. He continues this work through his engagement with DEAI initiatives.

4 **KIMBERLY HANSEN, PHD**

Flowering Plants

Kimberly Hansen joined the Field Museum in June 2023 as Collections Manager for Flowering Plants. She served as the Assistant Curator at the Marion Ownbey Herbarium at Washington State University, where she completed her doctorate in Plant Sciences. Kimberly has extensive experience in managing loans and specimens, including unprocessed specimens, as well as supervising students and volunteers. She has received several awards and funding for her work,

including research grants from the International Association of Plant Taxonomists, the Gesneriad Society, and the American Philosophical Society. Kimberly's research interests are focused on genomics, and she has developed relationships with researchers and herbaria in Latin America, especially Colombia and Ecuador. Her knowledge of neotropical plants will be a great asset to the Field Museum and its John G. Searle Herbarium.

5 **SEAN KEOGH, PHD**

Invertebrate Zoology

In June 2023, the Museum welcomed Sean Keogh as Collections Manager of Invertebrate Zoology. Before arriving at the Field, Sean was a PhD candidate in Ecology, Evolution, & Behavior at the University of Minnesota, as well as a Curatorial Assistant in the Mollusks & Crustaceans Collection at the Bell Museum. Sean has conducted fieldwork and research on fishes, amphibians, and mollusks for more than a decade with particular emphasis on freshwater bivalves. His research combines inferences from the field, natural history collections, and experiments to answer questions in evolutionary biology and conservation. Sean has an extensive background curating and studying museum collections. He has published in *Journal of Biogeography* and *Molecular Phylogenetics and Evolution*. He has also been active in mentoring high school students from underrepresented backgrounds in collections-based biodiversity research and is interested in expanding similar programs in Invertebrate Zoology at the Field.

OUR NEW CURATORS

10



BRUNO DE MEDEIROS, PHD

Negaunee Assistant Curator of Pollinating Insects

Bruno de Medeiros, PhD, joined the Field Museum in September 2022. Bruno is an entomologist who studies the vast diversity of insects, with a primary focus on plant-pollinator interactions in the tropics. He received his PhD in Organismic and Evolutionary Biology from Harvard University (2018), preceded by a Bachelor's and Master's degree in Biology from the University of São Paulo in Brazil.



FABIANY HERRERA, PHD

Assistant Curator of Paleobotany

Fabiany Herrera, PhD, came to the Field Museum from the Chicago Botanic Garden where he was a postdoctoral research associate. Fabiany grew up in Colombia and became the country's first paleobotanist. He received his PhD in Botany (2014) and his Master's degree in Geology (2008) at the University of Florida, and his Bachelor's degree in Geology at the Industrial University of Santander, Colombia (2005).

20,194

CITATIONS OF FIELD
MUSEUM SCHOLARS

280+

ARTICLES
PUBLISHED

150

SCIENTISTS
ON STAFF

26

NEW SPECIES TO
SCIENCE DESCRIBED





(Left) Flowering *Rhododendron* plants in the foothills of the Hengduan Mountains.

FLOWERS ARE GREAT NEIGHBORS

11

In the Hengduan Mountains of southeastern China, many closely related *Rhododendron* species live alongside each other and contribute to the striking biodiversity in the area, found in a paper co-authored by MacArthur Curator of Flowering Plants Richard Ree, PhD. These species, recently diverged from a common ancestor, compete more intensely with each other for the same resources, including pollinating insects, than with other neighboring plants. In many cases, competition like this would lead to one species overtaking the others, but these *Rhododendron* cousins have evolved different flowering schedules to live in harmony and avoid competing with each other.



WHEN DINOSAURS CONQUERED THE SKIES

Associate Curator of Fossil Reptiles Jingmai O'Connor, PhD, has authored an exquisitely illustrated exploration of how dinosaurs evolved flight and eventually became the birds we know today. Written for readers ages 8–12, *When Dinosaurs Conquered the Skies*' award-winning story proves that fact can definitely be stranger than fiction!

Get your copy today at the Field Museum Store or online at store.fieldmuseum.org.

12

SUE WAS WARM-BLOODED!

Research into dinosaur bone samples provides further information about their physiology and evolution. By examining the bones' biochemical byproducts, scientists can theorize which species breathed more than others, revealing which were likely warm-blooded or cold-blooded. The findings suggest that lizard-hipped dinosaurs, like *T. rex*, were warm-blooded and bird-hipped dinosaurs, like *Triceratops*, were cold-blooded.

(Right) Microscopic view of extracted fossilized soft tissue from the bones of an Allosaurus specimen that was investigated for signs of warm-bloodedness.





A BEASTLY FOSSIL COMES TO THE FIELD

For the past six years, a team including Chief Fossil Preparator Akiko Shinya, students, and volunteers has been excavating the fossil of a large hadrosaur. Nicknamed “The Beast” for its enormous size, the 2,500-pound block of steel-reinforced plaster field jacket arrived at the Field Museum in September 2022, where it will be prepared for study. Inside is the skeleton of a 75-million-year-old duckbilled *Parrosaurus missouriensis*, named for Missouri—the state where it was discovered, and a rare site to find dinosaur bones.

(Above) Chief Fossil Preparator Akiko Shinya (far left) and her team with “The Beast” fossil in its protective plaster field jacket at the dig site. Scientists cover excavated fossils in plaster to protect them as they journey from excavation sites to labs back at the Museum where they will be prepared for study.



IMPACT

The Field Museum connects all of us to the natural world and the human story. Through exhibitions, community outreach, and educational programs, the Field shares science and supports the next generation of scientists.



NATIVE TRUTHS: OUR VOICES, OUR STORIES

The Field Museum opened its newest permanent exhibition, *Native Truths: Our Voices, Our Stories*, in the summer of 2022. Four years in the making, the groundbreaking exhibition was created with the guidance of an advisory council of 11 Native American scholars and museum professionals, and in partnership with 130 collaborators representing more than 100 tribes. Visitors can experience stories of self-determination, resilience, continuity, and the future that come to life through historic and contemporary beadworks, ceramics, murals, music, dance, and more.

The Field Museum gratefully acknowledges the Sarowitz Family for lead support of Native Truths: Our Voices, Our Stories. Major support is offered by the Robert R. McCormick Foundation, the Efromyson-Hamid Family, Roger and Peter McCormick/Chauncey and Marion D. McCormick Foundation, and Mellon Foundation. Additional support is provided by Carolyn S. Bucksbaum, Elizabeth Morse Genius Charitable Trust, Julie and Matthew K. Simon, and Cia and Tom Souleles.

(Opposite) A horsehair dance bustle loaned to the exhibition by one of its storytellers, Dave Spenser. His parents, Chee Joe (Diné) and Lucille Spencer (Mississippi Chahta), owned a popular Native arts store in Chicago and purchased the bustle from Ruben Mitchell (Sac & Fox) in 1978.

(Above) Photograph of Lerris Keahna (Meskwaki) dancing at the 2019 Meskwaki powwow.



CONNECTING INDIGENOUS PARTNERS TO THE COLLECTIONS

(Above) Charlene Plume (left), an Elder in the Blackfoot Stand-Up Headdress Society, and Museum Conservator Erin Murphy restore a headdress for *Native Truths*.

The Andrew W. Mellon Foundation awarded the Field Museum a \$1 million grant to support ongoing work with Indigenous North American communities to connect them with the cultural material in the anthropology collections. The grant supports early career development opportunities for Indigenous graduates, a collaborative loan program for descendant communities to display collection items, and a knowledge exchange program to expand the Museum's understanding of the items in the Field's care and for Indigenous communities to learn more about the Museum's methods of object care.

Grant funding supported staff participation at the International Conference of Indigenous Archives, Libraries, and Museums in October. In January, Sam Frank joined the Museum as its first Mellon Early Career Fellow. Recently, the Museum hosted Lakota guests for its first Knowledge Exchange. Staff shared practical methods on exhibiting their heritage that minimize damage to collections, while guests shared their knowledge about the Lakota collections.





MONARCHS ADDED TO THE INTERNATIONAL ENDANGERED SPECIES LIST

Monarchs, with their striking orange and black wings, are some of the most well-known butterflies. But, the monarch—whose population has declined by 80% in the last 20 years—has recently been included on the International Union for Conservation of Nature (IUCN) Red List of Threatened Species™ as endangered, threatened by habitat destruction and climate change. That means these butterflies are just steps away from extinction.

The Field Museum's Keller Science Action Center seized the opportunity to remind us all that there are still things we can do! "What we plant matters," said Abigail Derby Lewis, Interim Director of the Keller Science Action Center. "Everyone can take action to help support the monarch butterfly, which also helps a wide range of other pollinators." Small individual actions collectively add up to significant gains for monarchs and other butterflies and bees.

(Left) Native midwestern plants are the focus of the Museum's outreach. However, familiar garden plants can also provide much needed nectar for monarch butterflies.

17

6,800

NATIVE PLANTS DISTRIBUTED
TO COMMUNITY GARDENS

6,094

STUDENTS ENGAGED BY YOUTH
CONSERVATION ACTION

2,209

COMMUNITY MEMBERS ENGAGED
IN CONSERVATION ACTION IN
THE CHICAGO REGION

456

NATURE KITS DISTRIBUTED
TO CHICAGOLAND SCHOOLS

127

PARTICIPANTS IN MONARCH
COMMUNITY SCIENCE

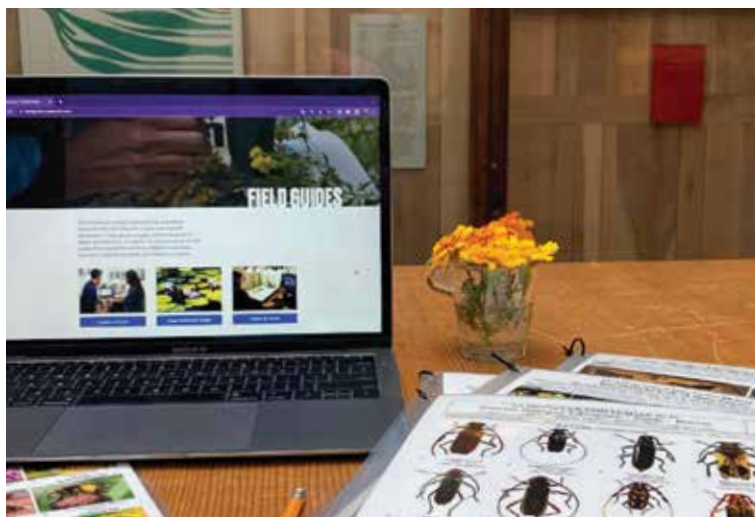
ROOTS & ROUTES DEEPENS COMMUNITY TIES TO URBAN NATURE

The Roots & Routes initiative works to co-create and sustain Chicago's south lakefront natural area, the Burnham Wildlife Corridor (BWC), as a refuge for wildlife and nearby communities. In collaboration with the Chicago Park District as well as local artists and community partners, the Keller Science Action Center organized large cultural programs at BWC Gathering Spaces in 2021: the Mid Autumn Festival and Día de los Muertos, which celebrated ancestral ties to the natural world. These popular annual events attracted more than 400 residents of all ages.

The Keller Center also led the creation of a booklet and webpage (gatheringspaces.org) that shares the Roots & Routes model for integrating art and culture into urban greenspace design. This Gathering Spaces guidebook was launched at a Pilsen event in November that convened funders, practitioners and community leaders from across Chicago.

(Background) Community members came together in Roots & Routes' Gathering Spaces to celebrate Día de los Muertos.





FIELD GUIDES MOVE TO A NEW HOME

Field Guides—free scientific resources for the Field Museum community—have been a flagship initiative of the Keller Science Action Center for the past 24 years. They not only catalog wildlife across the globe, but also represent hundreds of partnerships with researchers, educators, and local community leaders. Early in November, the Keller Center unveiled the newly redesigned Field Museum Field Guides website featuring increased functionality and easier access to over 1,300 free, high-quality field guides from 40 countries! Further improvements to the website will include a section highlighting partners' stories, an interactive map showing the global distribution of Field Guides, and shortcuts for finding Field Guides created for specific parks and reserves.

(Above) Field Guides' updated website.

902,994

DOWNLOADS FROM USERS
IN 192 COUNTRIES IN 2022

1,353

TOTAL GUIDES
REPRESENTING
41 COUNTRIES

81

NEW GUIDES CREATED
IN 2022 BY 260 AUTHORS

CALUMET VOICES, NATIONAL STORIES

After traveling around Chicago's Southeast Side and portions of northwest Indiana, *Calumet Voices, National Stories* opened in November at the Field Museum with a collection of the history, art, and biodiversity of the Calumet region, which surrounds the southern tip of Lake Michigan. The exhibition is a culmination of a collaborative series presented in recent years, with 15 local museums and history centers sharing their stories. The Field's exhibition focuses on the region by highlighting our scientists' research and activism in the area.

(Below) Renowned local artist Roman Villarreal uses recycled material to craft figurines that reflect community life.



CROWN FAMILY PLAYLAB REOPENS!

After two years of closure, the *Crown Family PlayLab* re-opened in June 2022 to families with children ages 2–6. *The Crown Family PlayLab* serves as a critical gateway for children to experience the four core sciences of the Museum in a developmentally appropriate way. The Field welcomed new staff members and volunteers to help create opportunities for families with young explorers to nurture their curiosity and ignite a scientific spark in visitors. Focusing on accessible programs, early learners explored *PlayLab* favorites while engaging with new elements in the space. These included a cast of SUE's skull, a field tent station, interactive science tables in the Scientists' Lab, and daily art programs in the Discovery Studio.

(Right) In the *Crown Family PlayLab*, kids can explore music and instruments from all over the world.



20



CELEBRATE DIVERSITY IN SCIENCE

The Changing Face of Science exhibition series was made possible in part by the Institute of Museum and Library Services grant award #MA-249085-OMS-21.



The Changing Face of Science is a new exhibition and program series that highlights the work of six Field Museum scientists from diverse backgrounds and in a range of disciplines. The first installment centered on Lynika Strozier's path into biological research and science education. Lynika discovered a passion for DNA sequencing in college, which eventually made her an asset to several teams at the Field. As her colleagues have put it, Lynika had "hands of gold." Unfortunately, she passed away in 2020 due to complications associated with COVID-19. *The Changing Face of Science* was inspired by and celebrates the life of Lynika Strozier and her contributions to science. New versions of the exhibition will open through 2024.

(Left) Lynika Strozier was a featured speaker in 2018 as part of the kick-off event for the Museum's 125th Anniversary and *Because Earth* campaign.

153

INTERNS TO ALL
DEPARTMENTS

113

GRADUATE STUDENTS
ADVISED

42

RESIDENT GRADUATE
STUDENTS

16

POSTDOCTORAL
RESEARCHERS SUPPORTED



HERITAGE CELEBRATIONS AT THE FIELD

The Field Museum sponsored a full schedule of events to celebrate diversity and culture throughout the year. Kicking off with Black History Month, the Museum hosted several guest speakers for a series of discussions on *Black in STEM*. Latinx Heritage Month brought beauty and color to Stanley Field Hall with performances and demonstrations by various community organizations. Native American Heritage Month concluded a year of celebrations with a blessing ceremony, screenings of Indigenous-directed short films, and pop-up presentations within the *Native Truths* exhibition. The Museum looks forward to celebrating these cultures and more with community partners in 2023 and beyond.

21

(Left) Museum guests explore the *Native Truths* exhibition in celebration of Native American Heritage Month.



CONNECTING TO OUR COMMUNITY WITH THE *N.W. HARRIS* LEARNING COLLECTION

The *N.W. Harris Learning Collection* has been a cornerstone of the science learning resources available to Chicago-area educators and the students they serve for over 100 years. The collection boasts 1,400 individual objects for use in educational and community spaces where students can engage in the same inquiry practices as real scientists. The Field was excited to share that after years of pandemic closure, the *N.W. Harris Learning Collection* fully re-opened for the public in October 2022, including a brand new website. Since the re-opening, the Field has hosted teacher trainings, international delegations, and hundreds of museum guests.

(Above) The Harris collection invites the larger community to learn and teach from the Field's resources.



(Left) Participants in the Dozin' with the Dinos events explored museum specimens and exhibitions during their night at the museum.

SUE THROWS A SLUMBER PARTY

Dozin' with the Dinos, the Field's signature family over-night program, resumed with optimism in 2022. Families with children ages 6–12 are provided an opportunity to explore the Museum in a unique way through this overnight event series. Activities included dissecting owl pellets, hands-on learning stations with specimens from our collections, meeting Field scientists and staff, and exploring the Museum's exhibitions after-hours.

23

596,299

STUDENTS AND FAMILIES
SERVED BY LEARNING
CENTER PROGRAMS

95,105

VISITORS ENGAGED
IN THE GRAINGER
SCIENCE HUB

427

STUDENTS PARTICIPATED
IN ON-SITE SUMMER
CAMP PROGRAMS

38

NEW PROGRAMS AND
RESOURCES CREATED
(ONLINE/IN-PERSON)

DEATH: LIFE'S GREATEST MYSTERY

Death: Life's Greatest Mystery opened in October, inviting visitors to challenge how they view life and death through a variety of perspectives. With artifacts, specimens, and immersive media experiences, visitors learned how life and death are part of a universal, continuous, and cyclical process. They discovered connections between growth and decay in an ever-changing multimedia experience at the heart of the exhibition that revealed how life goes on after death—and could not without it.



Death: Life's Greatest Mystery was organized by the Field Museum. Major support is generously provided by Lilly Endowment, Inc. Additional support is provided by Alicia and Peter Pond.

(Below) When a whale dies, it eventually sinks to the bottom of the ocean and becomes the foundation of a new ecosystem. This 10-foot-long diorama created for the exhibition shows how the whale's body serves as nutrients and supports hundreds of species for decades.



STORYTIME AT THE FIELD

In 2022, the Field Museum was the featured site for Chicago Public Library's *Live from...!* hybrid storytelling series. Families with young children were invited to come to the Field and enjoy live storytelling events or watch them online via Zoom. While at the Field, librarians read storybooks and led children in songs, dances, and movement games, surrounded by the Museum's wondrous exhibitions. The Museum will continue to partner with the library in 2023, including co-hosting programs for Black History, Arab American, and Asian American Native Hawaiian and Pacific Islander Heritage Months.

(Left) The Field Museum and CPL's multi-modal collaboration made space for families to interact with science and storytelling.

JURASSIC OCEANS: MONSTERS OF THE DEEP

Jurassic Oceans: Monsters of the Deep opened in February and gave visitors the opportunity to explore the seas of the Jurassic period. Created in collaboration with the Natural History Museum, London, the exhibition included a mix of real fossils, taxidermy specimens, constructed replicas, and CGI projections, offering visitors an up-close-and-personal experience of the marine reptiles that ruled the seas while dinosaurs ruled the Earth. *Jurassic Oceans* represents a triumphant return as the Field's first major exhibition to open after the COVID-19 pandemic.

Jurassic Oceans: Monsters of the Deep is developed and produced by the Natural History Museum, London.

In partnership with



Field Museum Major Sponsor

DISCOVER



One of the smaller mosasaurs, this agile swimmer held its prey in a vice-like grip with two kinds of teeth.

HONOR ROLL

The accomplishments of the Field Museum are made possible by a dedicated community of philanthropists. We gratefully acknowledge these donors for their generosity in 2022.





BECAUSE EARTH CAMPAIGN COMPLETION

On June 21, 2022, more than 300 friends and supporters came together to celebrate the successful completion of the *Because Earth* campaign, the largest fundraising initiative in the Field Museum's 129-year history. Thanks to the extraordinary generosity of Chicagoans, the campaign exceeded its \$250 million goal, raising \$316 million, including \$125 million in new endowment.

(Left) Field Museum donors celebrating the close of the *Because Earth* Campaign.

(Above) Field Trustee Joan Rubschlager and her husband Paul were honored in the *Because Earth* campaign celebration for their major commitment to Museum endowment.

BOARD OF TRUSTEES

Members of the Board of Trustees offer leadership and philanthropy to make the Field Museum an extraordinary force for science and learning.

EXECUTIVE COMMITTEE AND OFFICERS

W. Rockwell Wirtz^D
Chair

Julian F. Siggers, PhD^E
President and CEO

Wilbur H. Gantz III^P
Chair Emeritus

John L. Bucksbaum
Vice Chair, Facilities and Administrative Services

Dr. Richard A. Chaifetz
Vice Chair, Government Relations

Robert W. Crawford, Jr.
Vice Chair, Audit

Marsha A. Cruzan
Vice Chair, Development

Jeffrey T. Foland
Vice Chair, Marketing

Marshall B. Front
Vice Chair, Investment

David D. Hiller
Vice Chair, Integrative Research

Jamee C. Field Kane
Vice Chair, Development

Jeffrey B. Keller
Vice Chair, Science Action

Jorge M. Leon
Vice Chair, Retirement and Benefits

Margaret B. MacLean
Vice Chair, Collections

Siddharth (Bobby) Mehta
Vice Chair, Learning

Jessica P. Sarowitz
Vice Chair, Diversity, Equity, Access, and Inclusion

Jai Shekhawat
Vice Chair, Digital Engagement

Dawn L. Solomon
Vice Chair, Exhibitions

Jason M. Wortendyke
Vice Chair, Finance

Michael O'Grady
Secretary

At Large

Richard W. Colburn
Karen Z. Gray-Krehbiel
Constance T. Keller^P
Matthew K. Simon

TRUSTEES

Arjun Aggarwal
Herb Alpert
Lani Hall Alpert
Nana S. Banerjee, PhD
Susan M. Benton
Howard B. Bernick
Christopher T. Bertschy
Amy E. Best
Robert D. Blackwell, Jr.
Judith S. Block^P
Norman R. Bobins
Kathleen M. Boege
Gail K. Boudreaux
Willard L. Boyd^P
Jean-Claude Brizard
Tracy K. Cahillane
John A. Canning, Jr.
Gregory C. Case
Worley "H" Clark, Jr.
Andrew Clarke
James W. Compton
David L. Cotton
Mark J. Cozzi
Sir Peter Crane FRS

Kermit R. Crawford
Oscar A. David
James A. Delaney III
Roger K. Deromedi
Sandra E. Deromedi
Daniel A. Diermeier
Thomas E. Donnelley II
Margery Kamin Feitler
Michael W. Ferro, Jr.
Marshall Field V^P
Michael E. Flannery
James J. Glasser^D
Louise R. Glasser
Neal Gram
Jack M. Greenberg
Judy P. Greffin
Lewis S. Gruber
John J. Hamill, Jr.
Myetie Hamilton
Caryn L. Harris
Wayne E. Hedien
John O. Hudson III
Lauren M. Jiggetts-Donovan
Richard M. Jones
Michael L. Keiser
Shannon Kennedy
Richard L. Keyser
William C. Kunkler III
Bill Kurtis
Joseph P. Lacher, Jr.
Richard W. Lariviere, PhD
Ka Yee C. Lee
Richard M. Levin
Diane von Schlegell Levy
Robert B. Loveman
Scott P. Marks, Jr.
John W. McCarter, Jr.
Leo F. Mullin^P
Neil S. Novich
James J. O'Connor, Jr.

James J. O'Connor, Sr.^{DP}
Christopher A. O'Herlihy
Kenneth W. O'Keefe
Asutosh Padhi
David C. Parry
Aurie A. Pennick, Esq.
John F. Podjasek III
Peter B. Pond
Scott A. Rafferty
John Rau
Javier A. Reyes
Thomas S. Ricketts
John W. Rowe^{DP}
Joan S. Rubschlager
Ryan S. Ruskin
Dr. Dilara A. Sayeed
Alin M. Schubert
Nydia S. Searle
Michael E. Severino, MD
Jennifer L. Sherman
Adele S. Simmons
Mary L. Smith
Judson Bryant Snyder
Thomas S. Souleles
Kevin P. Stineman
Margaret B. Stineman
Michael Tang
Mark Tebbe
David M. Tolmie
Marcus A. von Kapff
Mark R. Walter
Everett S. Ward
Laura S. Washington
Elie A. Weaver
Robert L. Wesley
Miles D. White^P
William J. White
Nancy Hamill Winter
Patrick B. Wood-Prince

FOUNDERS' COUNCIL

The Founders' Council is the Field Museum's premier annual giving donor community. Members contribute \$2,500 or more to support every aspect of the Museum's mission.

CO-CHAIRS

Ryan S. Ruskin^T
Kevin P. Stineman^T
Margaret B. Stineman^T

CHAIRMAN'S CIRCLE

Members of the Chairman's Circle demonstrate an exceptional commitment to the Field Museum with annual gifts of \$25,000 or more. We gratefully acknowledge these leaders in philanthropy.

\$100,000+

Anonymous
Sue Ling Gin Foundation Trust^T
Lindy and Mike^T Keiser
Jessica^T and Steve Sarowitz
Mr. and Mrs.^T Michael D. Searle
Mr.^{TD} and Mrs. W. Rockwell Wirtz

\$75,000 – \$99,999

Dr.^T and Mrs. Richard A. Chaifetz
Elie A. Weaver^T and Hilton Weinberg

\$50,000 – \$74,999

Mr. and Mrs.^T Steven A. Cahillane
Rita and John^T Canning
The Crown Family
Colette Evans and John Rau^T
The Field Family^{TP}
Linda and Wilbur^{TP} Gantz

Connie^{TP} and Dennis Keller
Diane v.S.^T and Robert M. Levy
Swati and Bobby^T Mehta
Kenneth W. O'Keefe^T and Jason Eric Stephens
Alicia and Peter^T Pond
Joan^T and Paul Rubschlager
Marilyn L. Schweitzer and Michael A. Firman
Dawn L.^T and David J. Solomon
Michael Tang^T
Kimbra and Mark Walter^T

\$25,000 – \$49,999

Anonymous (3)
Anu and Arjun^T Aggarwal
The Howard B. Bernick^T Foundation
Amy E. Best^T
Judith S. Block^{TP}
Kathleen M. Boege^T
Jacolyn and John^T Bucksbaum
Greg^T and Mamie Case Charitable Fund
Mr.^D and Mrs. James J. Conrad
Mark Cozzi^T and James Goeke
Winnie and Bob^T Crawford
The Crown and Kunkler^T Family
Marsha Cruzan^T and Thomas McGinnis
Sandy^T and Roger^T Deromedi
Dr. and Mrs. Eugene F. Fama

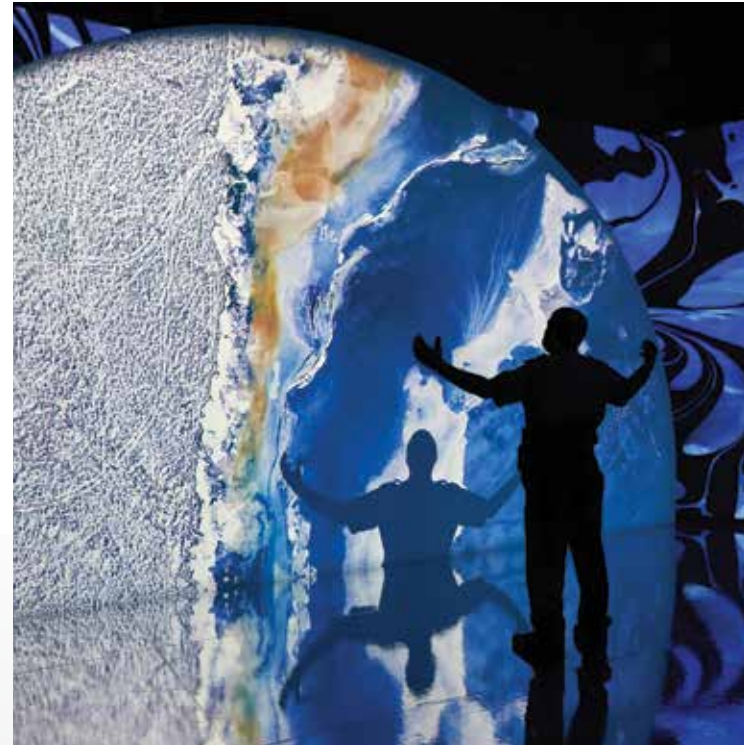
Mary and Bruce Feay
 Mr. and Mrs.^T Richard Feitler
 Jamee C. Field Kane^T
 The Edith B. and Lee
 V. Jacobs Fund No.1
 Lori and Michael^T Flannery
 Marshall B. Front Family
 Charitable Foundation /
 Laura De Ferrari and
 Marshall B. Front^T
 Karen Z. Gray-Krehbiel^T
 and John H. Krehbiel, Jr.
 Judy^T and Bill Greffin
 Mr.^T and Mrs. John J.
 Hamill, Jr.
 The Harris Family
 Foundation^T
 Colette and Wayne^T Hedien
 David D. Hiller^T
 John O. Hudson III^T and
 Nyya Parson-Hudson
 Molly and Jeff^T Keller
 Shannon Kennedy^T
 Mr.^T and Mrs. Richard
 L. Keyser
 Robert A. Kubicka, MD
 Mr.^T and Mrs. Joseph
 P. Lacher, Jr.
 Robert B.^T and Gail
 J. Loveman
 William B. McDonald and
 Ptah Sekhmat Osiris
 The Negaunee Foundation
 Neil^T and Deborah Novich
 Mr.^T and Mrs. Michael
 O'Grady
 Laura and John T.^T Podjasek
 Helen S. Reed
 Cecelia and Thomas^T
 Ricketts
 Jai S. Shekhawat^T
 Jennifer L. Sherman^T
 Adele S. Simmons^T
 Julie and Matthew K.^T Simon
 Cia and Tom^T Souleles

Robin and Mark^T Tebbe
 Miles D. White^{TP}
 Mr.^T and Mrs. Patrick
 B. Wood-Prince
 Jason Wortendyke^T and
 Ariel Knowles Wortendyke

\$10,000 – \$24,999

Anonymous (5)
 A. G. Cox Charity Trust
 Konrad J. Banaszak and
 S. Jennifer Sugarman
 Nana S. Banerjee, PhD^T and
 Smita C. Banerjee, PhD
 Joyce and Frank Bauer
 Shannon and Larry Bell
 Mr.^T and Mrs. Norman
 R. Bobins / The Robert
 Thomas Bobins
 Foundation
 Linda and Vincent
 Buonanno
 Tom and Dianne Campbell
 Charitable Fund
 Michele Chaffee and
 Adam Nordin
 Henry T. Chandler^D
 The Comer Foundation Fund
 Froilan P. Concepcion
 and Cecilia Concepcion
 Mr.^T and Mrs. Kermit
 R. Crawford
 Daphne and John
 Cunningham
 Melissa and Oscar^T David
 Susan and Mark Dawson
 Monica Donath
 Janet and Craig Duchossois
 Hattie A. and Marie
 V. Fatz Foundation
 Judith Findorff
 The Foland Family^T
 The Robert E. Gallagher
 Charitable Trust
 Alice and Richard Godfrey
 Grace Construction Group

Mr.^T and Mrs. Jack
 M. Greenberg
 Hamill Family Foundation /
 Nancy Hamill Winter^T
 Mr. and Mrs. Matthew
 C. Harris
 Susan M. Hering
 Robert D. Hevey, Jr. and
 Constance M. Filling
 Dr. and Mrs. Wayne
 J. Holman III
 CJ Hughes and
 Andrea Duys
 Lorraine M. Hurt and
 George M. Ingram
 Mrs. Noel Kaplan
 Anna Marie and Jerry Kelly
 Holly L. King
 Mr. and Mrs. Keith Kizziah,
 Malott Family Foundation
 Laurie and Rich Kracum
 Michael A. Leppen, Miriam
 U. Hoover Foundation
 Richard M. Levin^T and
 Sally J. McDonald
 Marianne Lovink and
 Julian Siggers^{TE}
 Patricia A. Malloy
 Mr.^T and Mrs. John
 W. McCarter, Jr.
 Mr.^T and Mrs. Christopher
 A. O'Herlihy
 Cathy and Bill Osborn
 Asutosh Padhi^T and
 Rita Anand-Padhi
 Mr. and Mrs. Donald W.
 Patterson, The Warwick
 Foundation
 Pepper Family Foundation
 Gail and William Radzevich
 Mr. and Mrs. Phillip
 B. Rooney
 Dilara^T and Yousuf Sayeed
 Karla Scherer
 Kass F. Sigal
 Judith B. Sugarman



71ST ANNUAL MEMBERS' NIGHTS

The Field Museum hosted its annual Members' Nights on May 12 and 13. This popular event welcomed members and donors back to the Museum for an in-person experience after two years of virtual programs. Nearly 1,700 guests enjoyed special, after-hours access to the Museum. Field scientists and educators had stations set up throughout the public spaces in the Museum, including in exhibition halls like *Ronald and Christina Gidwitz Hall of Birds*, *Griffin Halls of Evolving Planet*, and *Wild Color*. Members were able to meet with all of our experts and learn about the work they do around the world.

(Above) Members enjoy an exclusive viewing of Field Museum exhibitions during Members' Nights.

Mr. and Mrs. John
W. Taylor III
Captain Dave M. Truitt
Lori and Marcus^T von Kapff
The Abra Wilkin Fund
Steven M. Yablong

\$5,000 – \$9,999

Anonymous
The Allyn Foundation
Miah and Vernon Armour
Laura Bader and
Victor Sturm
Susan and Stephen Baird
Susan M. Benton^T
Hyacinth and Le Monte
G.^F Booker, Sr.
Bethany and Scott Brady
Mr. and Mrs. Andrew
W. Brown
Erica and Joshua Carter
Ceres Foundation
Christina and Paul Chatalas
Joyce E. Chelberg
Rebecca Childers Caleel
Rachel and Andrew^T Clarke
Mr. and Mrs. George
M. Covington
Judy and Tapas Das Gupta
Karen and Bill Davis
Laura and Dave Davis
Mr. and Mrs. James
M. Denny
Thomas R. Doler
Thomas E. II^T and Barbara
C. Donnelley Family
Fund of The Donnelley
Foundation
Jon Ekdahl and Marcia
Opp Ekdahl
Eldred-Harland Charitable
Fund at The Chicago
Community Foundation
Judith A. Fitz
Ginny and Peter Foreman

The Philip M. Friedmann
Family Charitable Trust
The Gehrke and
Vanderson Family
Mr. and Mrs. Camillo Ghiron
Stephen Gieser
Mr.^{TD} and Mrs.^T James
J. Glasser
Daniel J. Gocek and
Lauren Conroy
Donald P. Grasso
Delta A. Greene
Jean Greene
Katherine L. Griem, MD
Anastasia Gutting
Patricia and William
J. Hagenah
Heidi and Richard Holm
Cheri and Andrew Houha
Mr. and Mrs. John
L. Houston
George Hrycelak and
Sophia Welykyj
Ying Hsu and Donald
R. Monson
Jill Hutchison and
David Rosholt
Jeni and Rich Jernstedt
Judy Johanson
Linda M. Jung
Charles L. Katzenmeyer^F
Heidi Kiesler
Mr. and Mrs. Frederick
W. Langrehr
René and Bruce Lauer
Dr. Mary Lawlor and
Dr. John Kallend
Jorge M. Leon^T
The Loewenthal Fund
at The Chicago
Community Foundation
Susan H. Luciu
Margaret B. MacLean^T
Mr.^T and Mrs. Scott
P. Marks, Jr.

Adele Martel, MD, PhD,
and Roland Martel
Donna J. Matson and
Robert W. Carpenter
Kennon P. McKee, PsyD
Mr. and Mrs. Ronald
R. McKee
Mrs. Hugo J. Melvoin^D
Moller Family Foundation
Mr. and Mrs. John V. Morris
Mr.^{TP} and Mrs. Leo F. Mullin
Alexandra C. and John
D.^D Nichols
Mary C. Niehaus and
Sanjeev Pandey
Mr.^T and Mrs. James J.
O'Connor, Jr.
Mr.^T and Mrs. Scott
A. Rafferty
D. Roskin
Ryan Ruskin^T and
Michael Andrews
Mr. and Mrs. John
W. Rutledge
Sargent Family Foundation
Susan and Alan Sebulsky
Mr. and Mrs. Gordon I.
Segal, Segal Family
Foundation
Mrs. Stephen H. Sentoff
Bessie Shields Foundation
Richard M. Skolly and
Kate A. Feinstein
Margie^T and Kevin^T Stineman
Jeannie and Thomas Tisbo
Mr. and Mrs. Orlin D.
Trapp, Jr.
Cheri and Michael Vaglienty
Anne Van Wart and
Michael Keable
Anita and Thomas Veldman
Ashley and Jordan
von Kluck
Mr. and Mrs. Robert
J. Wagner
Dilnaz and Qaiser Waraich

William J. White^T
April R. Wilson
Ms. Melanie R. Wojtulewicz
Colleen B. Yale and
Michael R. Yale

\$2,500 – \$4,999

Anonymous (9)
Mary Claire and
Doug Allvine
Birute J. Apke
Lynn Atkinson
Rodney Austin
Mr. and Mrs. Aaron
A. Barlow
Martha and James Barrett
Mary Jo and Doug Basler
Sandra Bass
Verna L. Baughman, MD
Mr. and Mrs. Philip S. Beck
Helene Beisecker and
Jean Ann White^D
Deborah A. Bekken^F and
Richard G. Kron
Mr. and Mrs. Harrington
Bischof
Shaun and Andy Block
Mr. and Mrs. Paul A. Bodine
David Bohan and
Kathryn Kemp
Mr. and Mrs. John J.
Borland, Jr.
Nancy and William Brown
Beth and Samuel
Buchsbaum
Michelle and David Buck
Butler Family Foundation
Mrs. Elvira M. Butz, The
Butz Family Foundation
Edward J. Calkins
Lindsay W. Carlton
Guy T. Castino
Mr. and Mrs. John
S. Chapman
Ricardo Chimal, Jr.

Gay-Young Cho and Yu-Lam
Christopher Chiu, MD
Pamela Conant
Bill Cox and Mary Noble
Sir Peter^T and Lady Crane
Jill and Robert Delaney
Mr. and Mrs. James
W. DeYoung
Anne and Joshua
Dickemann
Amy T. Dickinson and
Jim Futransky
Janet W. Diederichs
Janice and Richard
Domanik
Carolyn K. Donaldson
and James S. Donaldson
Katherine T. Donaldson
and Ryan B. Whitacre
Dr. Naomi S. Donnelley
Mignon W. Dupepe and
John B. Snyder, Jr.
Thomas E. Durica
and Susan Jacob
Cherelynn A. Elliott
Alexis and Craig Eyler
Mr. and Mrs. William
F. Farley
Susan and Alexander
Faurot
David H. Fenter
Mr. and Mrs. Peter
D. Fischer
Barbara V. Fisher
William Fotis
Wende Fox Lawson
and Jim Lawson
Deborah and Charles Frank
Donna and Peter Freeman
Mr. and Mrs. John E. Freund
Mr. and Mrs. Joel
M. Friedman
Gretchen M. Gillis and
Dr. David R. Cook
Beth^T and Chris Glass

Mary E. Gleason
Nika Gloyeske
Donna and Roger Godel
Dr. and Mrs. Daniel
Grossman
Mr.^T and Mrs. Lewis
S. Gruber
Dana and John Hagenah
Marides and Robert Haidari
Tonja Rizai Hall
Esther R. Hankin
Stephanie C. Harris,
The Edith B. and Lee
V. Jacobs Fund No. 2
Mr. and Mrs. Dean
M. Harrison
Mr. and Mrs. J.
Duncan Healy
Dawn and Ted Helwig
Mr. and Mrs. Patrick
J. Herbert III
Kimberlee S. Herold
Mr. and Mrs. Harlow
N. Higinbotham
Mr. and Mrs. John L. Hines
Peggy L. Hoberg
Janet and Arthur
Holzheimer
Maria R. Hrycelak, MD
Felix Yuansi Huang and
Joshua Lau
Laurie Huget and
Werner Huget
Mr. and Mrs. Christopher
Hurley
Carolyn and Paul Jarvis
Kathleen and Alex Kallend
Teresa Kang and John
Goerner
Mr. and Mrs. Eric Kauffman
Janice Kaye
Mr. and Mrs. Kenneth
C. Keller
Mr. and Mrs. Eric L.
Kennedy

Krystyna D. Kiel and
Alexander Templeton
Kathleen and Dennis
Klaeser
Becky and Lester Knight
Dr. and Mrs. Barry Kohl, PhD
Mr. and Mrs. Robert
R. Kunkler
Donna M. La Pietra and
William H. Kurtis^T
Sherri and Michael Leahy
Ka Yee C. Lee^T and
Thuong G. Van Ha
Deirdre Lemire
Alexandra and Robert Linn
Charitable Fund
Little Lion
Mr. and Mrs. Jordan Lowe
Ilene and Lawrence Lubell
Patricia S. Lucas
Thomas T. Macejko, Jr. and
Amanda Maw Macejko
Pamela MacVicar Johnson
Sandra and Benjamin
Madey
Mr. and Mrs. Alan J.
Magerkurth
The Louise and Elizabeth
Manke Foundation /
Irene C. Manke
Todd Christopher Marek
and Vana Thayu
Peter Marks and Dorothy
Mackevich Marks
Jamie C. Marshall and
Richard Sobkowiak
Jennifer and David Martay
Jennifer L. Martin
Michelle L. Maton and
Michael C. Schaeffer
Mr. and Mrs. Charles
R. Matthews
Todd E. Mayer and
Jamie Mayer
McKee Family Foundation
Etta and John McKenna

Deanne and John McLean
Mr. and Mrs. Charles
P. McQuaid
Withrow W. Meeker^D
Anne L. Metcalf
Pamela L. Miles
Mr. and Mrs. Robert
R. Moeller
Cynthia A. Moody
Lisa and Jerry Moore
Jennifer and Brad
Morehead
Mr. and Mrs. Thomas
M. Mulcahy
Jeanette and
James Murphy
James H. Niehoff and
Jolie R. Macier
Jennifer and Craig
Niemann
Christina J. Norton
and John A. Biek
Mark A. Oates Family
Mr.^{TPD} and Mrs. James
J. O'Connor, Sr.
Donna Lee Owens and
Megan Owens
The Richard Laurence
Parish Foundation
Dr. and Mrs. William
R. Parkhurst
Jo Ann and Joe Paszczyk
Shauna Peet
Mr. and Mrs. Robert
P. Perkaus, Jr.
Beverly and
Stephen Pinaire
Judith and Charles Pitman
R. Allan and Summer Pixton
Anne and Paul Poy
Mrs. Albert E. Pyott
James A. Radtke and
Susan Ann Kressin
Jack Ringer Family
Foundation

Anita J. Rogers
Robert A. Rosholt and
Sharon L. Brunelle
Mr. and Mrs. Jeffrey
S. Ross
Susan B. Rubnitz
Charles Ruedebusch
and Linda Flack
Mr. and Mrs. Patrick
G. Ryan
Barbara M. Schleck
and Gary M. Ropski
Mrs. John Schlossman
Mr. and Mrs. Richard
H. Schnadig
Karen M. and Frank
L. Schneider
Barbara and Thomas
Schnitzer
Suzanne and Kenneth
Schulte
Marilyn C. and Stephen
A. Scott
Mr. and Mrs. Richard J.
L. Senior, The Morgan
Senior Foundation
Mr. and Mrs. Jeffrey
S. Sharp
Sally Sharp
Charlene and Bob Shaw
Pam and Tom Sheffield,
JS CharitableTrust
Geoffrey Smith and
Catherine Stewart
Elizabeth L. Snyder
Tom Sourlis and Susan
Eleuterio
The Sparacio Family
Mr. and Mrs. Neele E.
Stearns, Jr.
Liz Stiffel
Kevin L. Stoeckel and
Emily Heisley Stoeckel
Lorna Puttkammer Straus
and Christopher M.
Straus, MD

Ivan G. Strauss
Steven Strohmeier^E
and Josie Brown
Mary and Harvey Struthers
Kathleen and Lawrence
Sullivan
Arthur Susman and
Carole Stone
Wayne N. Svoboda
Linda J. Swanson and
John Seeley
Mr. and Mrs. Robert
N. Szalay
Peter M. Vale
Shiju Varghese and
Christina Chamakala
The Vitale Family
Foundation Inc.
Kathleen D. Vogt
Mr. and Mrs. Douglas
H. Walter
Mr. and Mrs. John R. Walter
Everett S. Ward^T and
Iris K. Sims
Warne Family Charitable
Foundation
Paul Waters and Nancy
Bugajski
Carrie and Jay Weaver
Michael and Christine Weis
Jane Wells and
Burton Ferrini
Raymon F. Whitney
Lynda W. Williams, PhD
and Norman J. Williams
Mr. and Mrs. William E. Wolf
Carole Wood and Carl
Jenkins
I. Joyce Young and
Matt Bayer
Sara Zion and Tushar Shah
Mr. and Mrs. Robert Zentner

2022 CUMULATIVE CONTRIBUTIONS

**We acknowledge donors
for their support of several
Field Museum initiatives.**

\$1,000,000+

Anonymous
Chicago Parks District
Kenneth C. Griffin
Charitable Fund
Illinois Department of
Natural Resources
Mellon Foundation
National Aeronautics and
Space Administration
National Science
Foundation
The Negaunee Foundation
Daniel F. and Ada L.
Rice Foundation
Jessica^T and Steve Sarowitz
U.S. Department of
Housing and Urban
Development
U.S. Small Business
Administration
Walder Foundation
Kimbra and Mark^T Walter,
Walter Family Foundation

\$500,000 – \$999,999

Anonymous (2)
Lynn J. Besser^D
Nancy Hamill Winter^T,
Hamill Family Foundation
Searle Funds at The
Chicago Community
Trust
Mr. and Mrs.^T Michael
D. Searle
Miles D. White^{TP} and Family

\$100,000 – \$499,999

Anonymous (2)
Abbott

America for Bulgaria
Foundation
Aon
Bobolink Foundation
The Brinson Foundation
Jacolyn and John^T
Bucksbaum
Dr.^T and Mrs. Richard
A. Chaifetz
ComPsych Corporation
Winnie and Bob^T Crawford
Sandy^T and Roger^T
Deromedi
Discover
Jamee Field Kane^T,
The Edith B. and Lee
V. Jacobs Fund No. 1
Marshall Field V^{TP}
Sue Ling Gin
Foundation Trust
Julian Grace Foundation
Karen Z. Gray-Krehbiel^T
and John H. Krehbiel, Jr.
Robert D. Hevey, Jr. and
Constance M. Filling
Illinois Arts Council Agency
Institute of Museum and
Library Services
Lindy and Mike^T Keiser
Connie^{TP} and Dennis Keller
Little Orchard Foundation
John D. and Catherine T.
MacArthur Foundation
Magellan Corporation
Chauncey and Marion
D. McCormick Family
Foundation
Swati and Bobby^T Mehta
Diana and David Moore
National Endowment for
the Humanities
The Nitecki Family,
In Memory of
Matthew Nitecki
Nordloh Family Foundation,
In Memory of John
and Mary Nordloh



PARKER/GENTRY AWARD

In April 2022, the Field Museum awarded August M. Ball and her organization Cream City Conservation and Consulting the 2022 Parker/Gentry Award, recognizing outstanding work in environmental conservation. C4 employs people often underrepresented in environmental science in conservation work in the Milwaukee area.

(Above) August M. Ball's organization Cream City Conservation and Consulting engages local youth and young adults in stewardship of their local landscape, in partnership with local and national organizations.

Michael Tang^T
Gretchen and Gregory
Tieder
Jeannie and Thomas Tisbo
United Airlines
University of Chicago
Barbara H. West^D
Mr.^{TD} and Mrs. W.
Rockwell Wirtz

\$50,000 – \$99,999

Anonymous (3)
AbbVie
Paul M. Angell Family
Foundation
Konrad J. Banaszak and
S. Jennifer Sugarman
The Barker Welfare
Foundation
BMO

Mr. and Mrs.^T Steven
A. Cahillane
Mr.^D and Mrs. Wiley N.
Caldwell, Jr.
Rita and John^{TP} Canning
The Crown Family
Janet and Craig
Duchossois
Colette Evans and
John Rau^T

Exelon
Julius N. Frankel
Foundation
Marshall B. Front Family
Charitable Foundation /
Laura De Ferrari and
Marshall B. Front^T
Linda and Wilbur^{TP} Gantz
Christina and Ronald^P
Gidwitz Charitable
Foundation
Ellis Goodman Family
Foundation
Jeanne M. Hansen^D
The Harris Family
Foundation
ITW
JPMorgan Chase & Co.
The Knowles Foundation
Mr.^T and Mrs. Joseph
P. Lacher, Jr.
Robert B.^T and Gail
J. Loveman
Mr.^T and Mrs. John
W. McCarter, Jr.
National Material L.P.
Nicor Gas
Karen A. Nordquist
Northern Trust
Office of the Secretary
of State / Illinois State
Library
Mr.^T and Mrs. Michael
O'Grady
Kenneth W. O'Keefe^T and
Jason Eric Stephens
Cathy and Bill Osborn
Peoples Gas
Mr.^T and Mrs. John
F. Podjasek III
Polk Bros. Foundation
Alicia and Peter^T Pond
Betty D. Prout^D
Quest Foundation
Regenstein Foundation
Joan^T and Paul Rubschlager

Mr. and Mrs. Patrick G. Ryan
Marilyn L. Schweitzer and
Michael A. Firman
Mr. and Mrs. Gordon I.
Segal, Segal Family
Foundation
Dawn L.^T and David
J. Solomon
Barbara A. Speer
Arthur Susman and
Carole Stone
John G. Symons Trust
Charities Fund/Marshall
B. Front^T and Case
Hoogendoorn,
Co-Trustees
Tawani Foundation
U.S. Bank
U.S. Department
of Commerce /
National Oceanic and
Atmospheric Association
(NOAA) / Illinois
Department of Natural
Resources
Elie A. Weaver^T and
Hilton Weinberg
\$25,000 – \$49,999
Anonymous (2)
Hall Adams, Jr.
Anu and Arjun^T Aggarwal
Jean R. Armour^{TD}
Bank of America
Mary Jo and Doug Basler
The Robert and Isabelle
Bass Foundation, Inc.
Bears Care
The Howard B. Bernick^T
Foundation
Amy E. Best^T
Judith S. Block^{TP}
Mr.^T and Mrs. Norman R.
Bobins, Bobins Family
Fund at The Chicago
Community Foundation
Kathleen M. Boege^T

The Buchanan Family
Foundation
Greg^T and Mamie Case
Charitable Fund
The Christopher Family
Foundation
Citadel
City of Chicago /
Department of Cultural
Affairs and Special
Events
CNA Insurance
Mr.^D and Mrs. James
J. Conrad
Mark Cozzi^T and James
Goeke
Mr.^T and Mrs. Kermit
R. Crawford
Henry Crown and Company
Marsha Cruzan^T and
Thomas McGinnis
Melissa and Oscar^T David
Edna Foundation
Ernst & Young LLP
Dr. and Mrs. Eugene F. Fama
Mary and Bruce Feay
Federal Signal
Mr. and Mrs.^T Richard
Feitler
The Field Foundation
of Illinois
Lori and Michael^T Flannery
Ford Motor Company Fund
Evelyn Frank^D
GCM Grosvenor
Beth^T and Chris Glass
Geoffrey M. Glass
The Grainger Foundation
Green Mountain Energy
Judy^T and Bill Greffin
John R. Halligan
Charitable Fund
Mr.^T and Mrs. John
J. Hamill, Jr.
Sally Mead Hands
Foundation

Harris Family Fund of The New York Community Trust	Walgreens	The Duchossois Family Foundation	Mr. and Mrs. Thomas M. Mulcahy	The Harry and Jeanette Weinberg Foundation	Eldred-Harland Charitable Fund at The Chicago Community Foundation
Colette and Wayne ^T Hedien	William Blair	Alexis and Craig Eyler	Clare Muñana	The Abra Wilkin Fund	Susan and Alexander Faurot
David D. Hiller ^T	Winston & Strawn LLP	Hattie A. and Marie V. Fatz Foundation	National Geographic Society	David E. Willard	Fellowes Brands
John O. Hudson III ^T and Nyya Parson-Hudson	Wintrust Financial Corp.	The Foland Family ^T	Mr. ^{TPD} and Mrs. James J. O'Connor, Jr.	Steven M. Yablong	Judith Findorff
James C. Hunt ^D	Mr. ^T and Mrs. Patrick B. Wood-Prince	The Robert E. Gallagher Charitable Trust	Lorain S. Olsen	\$5,000 – \$9,999	First Eagle Investments Foundation
Molly and Jeff ^T Keller	Jason Wortendyke ^T and Ariel Knowles Wortendyke	Mr. and Mrs. Camillo Ghiron	Openlands Project	Anonymous (2)	Judith A. Fitz
Shannon Kennedy ^T	\$10,000 – \$24,999	Mr. ^{TD} and Mrs. ^T James J. Glasser	Grace Construction Group, LLC	The Allyn Foundation, Inc.	Ginny and Peter Foreman
Mr. ^T and Mrs. Richard L. Keyser	Anonymous (8)	Alice and Richard Godfrey Grainger	Asutosh Padhi ^T and Rita Anand-Padhi	Aramark	The Philip M. Friedmann Family Charitable Trust
Mr. and Mrs. Robert E. King	Aileen S. Andrew Foundation	Grant Thornton LLP	Mr. and Mrs. Donald W. Patterson, The Warwick Foundation	Miah and Vernon Armour	Friends of Nachusa Grasslands
The Maxwell/Hanrahan Foundation	Nana S. Banerjee, PhD ^T and Smita C. Banerjee, PhD	Mr. ^T and Mrs. Jack M. Greenberg	The Pepper Family Foundation	Laura Bader and Victor Sturm	The Gehrke and Vanderson Family
William B. McDonald and Ptah Sekhmat Osiris	Joyce and Frank Bauer	Tonja R. Hall	PepsiCo, Inc.	Susan and Stephen Baird	Stephen Gieser
Neil ^T and Deborah Novich	Baxter International Inc.	Mr. and Mrs. Matthew C. Harris	PNC	Black Box Network Services	Lyle Gillman ^D
Mr. ^T and Mrs. Chris O'Herlihy	Shannon and Larry Bell	Dr. and Mrs. Wayne J. Holman III	Tanya and Michael Polsky	Hyacinth and Le Monte G. ^T Booker, Sr.	Daniel J. Gocek and Lauren Conroy
Prince Charitable Trusts	Susan M. Benton ^T	CJ Hughes and Andrea Duys	Gail and William Radzevich	Bethany and Scott Brady	Donald P. Grasso
Helen S. Reed	Fund at The Chicago Community Foundation	IDEX Corporation	Rank + Rally	Breakthru Bev Illinois	Delta A. Greene
Cecelia and Thomas ^T Ricketts	Michael Best & Friedrich LLP	The Edith B. and Lee V. Jacobs Fund No. 3	S&C Electric Company	Mr. and Mrs. Andrew W. Brown	Jean Greene
Mr. and Mrs. Phillip B. Rooney	Bloomberg Philanthropies	Mrs. Noel Kaplan	John P. Salvino	Butler Family Foundation	Katherine L. Griem, MD
Charlene and Bob Shaw	Blue Cross & Blue Shield of Illinois	Anna Marie and Jerry Kelly	Dilara ^T and Yousuf Sayeed	Rebecca Childers Caleel	Anastasia Gutting
Jai S. Shekhawat ^T Trust	Carlene M. Blumenthal ^D	Holly L. King	Karla Scherer	Tom and Dianne Campbell Charitable Fund	Patricia and William J. Hagenah
Jennifer L. Sherman ^T	Dr. Richard T. Brannegan ^D	Mr. and Mrs. Keith Kizziah, Malott Family Foundation	Mrs. John Schlossman	Erica and Joshua Carter	Dorothy Harza
Adele S. Simmons ^T	Linda and Vincent Buonanno	Mr. and Mrs. Adam Klauber	Mr. and Mrs. Richard H. Schnadig	Ceres Foundation	Mr. and Mrs. Patrick J. Herbert III
Julie and Matthew K. ^T Simon	Michele Chaffee and Adam Nordin	Laurie and Rich Kracum	Kass F. Sigal	Christina and Paul Chatalas	Mr. and Mrs. Harlow N. Higinbotham
The Smart Family Foundation	Henry T. Chandler ^D	Michael A. Leppen, Miriam U. Hoover Foundation	The Siragusa Family Foundation	Ricardo Chimal, Jr.	Hoellen Family Foundation
Cia and Tom ^T Souleles	Joyce E. Chelberg	Richard M. Levin ^T and Sally J. McDonald	Solberg Manufacturing, Inc.	CIBC US	Heidi and Richard Holm
Mr. and Mrs. Neele E. Stearns, Jr.	Rachel and Andrew ^T Clarke	Marianne Lovink and Julian Siggers ^{TE}	Mr. and Mrs. Charles H. Solberg, Jr.	Mr. and Mrs. George M. Covington	Cheri and Andrew Houha
Lorna Puttkammer Straus and Christopher M. Straus, MD	CME Group Foundation	Patricia A. Malloy	Judith B. Sugarman	Judy and Tapas Das Gupta	Mr. and Mrs. John L. Houston
Robin and Mark ^T Tebbe	The Comer Foundation Fund	Robert R. McCormick Foundation	Mr. and Mrs. John W. Taylor III	Laura and Dave Davis	George Hrycelak and Sophia Welykyj
Terra Foundation for American Art	Froilan P. Concepcion and Cecilia Concepcion	McKinsey & Company	Mr. and Mrs. Richard L. Thomas	Karen and Bill Davis	Ying Hsu and Donald R. Monson
Howard A. Tyner	A. G. Cox Charity Trust	Molex Incorporated	Mr. and Mrs. Orlin D. Trapp, Jr.	Mr. and Mrs. James M. Denny	Lorraine M. Hurt and George M. Ingram
U.S. Department of the Interior / National Parks Service	Daphne and John Cunningham	Morgan Stanley	Lori and Marcus ^T von Kapff	Thomas R. Doler	Jill Hutchison and David Rosholt
	Susan and Mark Dawson		The Warwick Foundation	Carolyn K. Donaldson and James S. Donaldson	
	DLA Piper U.S. LLP			The Donnelley Foundation ^T	
	Monica Donath			Jon Ekdahl and Marcia Opp Ekdahl	

Integrated Electric Edgar D. Jannotta, Sr. Jeani and Rich Jernstedt Judy Johanson Linda M. Jung Charles L. Katzenmeyer ^E Heidi Kiesler Kathleen and Dennis Klaeser Mr. and Mrs. Frederick W. Langrehr René and Bruce Lauer Dr. Mary Lawlor and Dr. John Kallend Jorge M. Leon ^T The Loewenthal Fund at The Chicago Community Foundation Susan H. Luciu Margaret B. MacLean ^T Mr. ^T and Mrs. Scott P. Marks, Jr. Adele Martel, MD, PhD and Roland Martel Masco Corporation Donna J. Matson and Robert W. Carpenter Mr. and Mrs. Charles R. Matthews Kennon P. McKee, PsyD Mr. and Mrs. Ronald R. McKee Mrs. Hugo J. Melvoin ^D Moller Family Foundation Mr. and Mrs. John V. Morris Mr. ^{TP} and Mrs. Leo F. Mullin Gary Lincoln Neilson and Trudy A. Havens Alexandra C. and John D. ^D Nichols Mary C. Niehaus and Sanjeev Pandey Jacqueline L. Quern The George and Mary Rabb Fund for Conservation	Mr. ^T and Mrs. Scott A. Rafferty D. Roskin Ryan Ruskin ^T and Michael Andrews Mr. and Mrs. John W. Rutledge S&P Global Sahara Enterprises, Inc. Sargent Family Foundation Carol H. Schneider Mrs. Stephen H. Sentoff Charles & M.R. Shapiro Foundation, Inc. Mr. and Mrs. Jeffrey S. Sharp Bessie Shields Foundation Richard M. Skolly and Kate A. Feinstein SPX Corporation Margie ^T and Kevin ^T Stineman Mr. and Mrs. Brian R. Sullivan Sulzer Family Foundation Tave Risk Management Cheri and Michael Vaglienty Anne Van Wart and Michael Keable Anita and Thomas Veldman Ashley and Jordan von Kluck Mr. and Mrs. Robert J. Wagner Dilnaz and Qaiser Waraich William J. White ^T Lynda W. Williams, PhD and Norman J. Williams April R. Wilson Melanie R. Wojtulewicz Colleen S. Yale and Michael R. Yale Felix Yuansi Huang and Joshua Lau	\$2,500 – \$4,999 Anonymous (9) Charles Adams Nature Research Foundation Mary S. Allan ^D Mary Claire and Doug Allvine American Agricultural Insurance Company Birute J. Apke AT&T Foundation Lynn Atkinson Rodney Austin Mr. and Mrs. Aaron A. Barlow Martha and James Barrett Verna L. Baughman, MD Mr. and Mrs. Philip S. Beck Helene Marie Beisecker and Michael Lee Beisecker Deborah A. Bekken ^E and Richard G. Kron Mr. and Mrs. Harrington Bischof Shaun and Andy Block Mr. and Mrs. Paul A. Bodine David Bohan and Kathryn Kemp Mr. and Mrs. John J. Borland, Jr. Helen Brach Foundation Joell and Robert Brightfelt Barb and Nathan Brown Nancy and William Brown Beth and Samuel Buchsbaum Michelle and David Buck Mrs. Elvira M. Butz, The Butz Family Foundation Edward J. Calkins Lindsay W. Carlton Guy T. Castino Mr. and Mrs. John S. Chapman	Gay-Young Cho and Yu-Lam Christopher Chiu, MD Pamela Conant Bill Cox and Mary Noble Sir Peter ^T and Lady Crane Jill and Robert Delaney Mr. and Mrs. James W. DeYoung Anne and Joshua Dickemann Amy T. Dickinson and Jim Futransky Janet W. Diederichs Janice and Richard Domanik Dr. Naomi S. Donnelley Mignon W. Dupepe and John B. Snyder, Jr. Thomas E. Durica and Susan Jacob Mr. and Mrs. Timothy K. Earle Cherelynn A. Elliott Mr. and Mrs. William F. Farley David H. Fenter Johanna Ferguson and Nick Grossi Mr. and Mrs. Peter D. Fischer Barbara V. Fisher William Fotis Wende Fox Lawson and Jim Lawson Deborah and Charles Frank Donna and Peter Freeman Mr. and Mrs. Joel M. Friedman Front Barnett Associates LLC Mr. and Mrs. Glenn L. Gabanski Gretchen M. Gillis and Dr. David R. Cook Mary E. Gleason Nika Gloyeske	Donna and Roger Godel John Goerner and Teresa Kang Mr. and Mrs. James P. Gorter Joyce and Timothy Greening Dr. and Mrs. Daniel Grossman Mr. ^T and Mrs. Lewis S. Gruber Dana and John Hagenah Marides and Robert Haidari Esther R. Hankin Mr. and Mrs. Dean M. Harrison Mr. and Mrs. J. Duncan Healy Dawn and Ted Helwig Kimberlee S. Herold Mr. and Mrs. John L. Hines Peggy L. Hoberg Janet and Arthur Holzheimer Maria R. Hrycelak, MD Laurie Huget and Werner Huget The Humanist Fund Mr. and Mrs. Christopher Hurley Mrs. Robert C. Hyndman ^D Carolyn and Paul Jarvis Pamela MacVicar Johnson JPMorgan Chase Foundation Kathleen and Alex Kallend Janice Kaye Mr. and Mrs. Kenneth C. Keller Mr. and Mrs. Eric L. Kennedy Krystal D. Kiel and Alexander Templeton Becky and Lester Knight Dr. and Mrs. Barry Kohl, PhD	Mr. and Mrs. Robert R. Kunkler Donna La Pietra and William H. Kurtis ^T Ka Yee C. Lee ^T and Thuong G. Van Ha Deirdre Lemire Alexandra and Robert Linn Charitable Fund Little Lion Locke Lord LLP Mr. and Mrs. Jordan Lowe Ilene and Lawrence Lubell Patricia S. Lucas Thomas T. Macejko, Jr. and Amanda Maw Macejko Sandra and Benjamin Madey Mr. and Mrs. Alan J. Magerkurth The Louise and Elizabeth Manke Foundation, Irene C. Manke Todd Christopher Marek and Vana Thayu Peter Marks and Dorothy Mackevich Marks Jamie C. Marshall and Richard Sobkowiak Jennifer and David Martay Michelle L. Maton and Michael C. Schaeffer Todd E. Mayer and Jamie Mayer McKee Family Foundation Etta and John McKenna Deanne and John McLean Mr. and Mrs. Charles P. McQuaid Withrow W. Meeker ^D Anne L. Metcalf Pamela L. Miles Mr. and Mrs. Robert R. Moeller Cynthia A. Moody Lisa and Jerry Moore
--	--	--	---	--	---

Jennifer and Brad Morehead	Suzanne and Kenneth Schulte	Jane Wells and Burton Ferrini	The Birk Family Fund	Patricia and Charles Erickson	Mr. and Mrs. Fred Holubow
Jeanette and James Murphy	Marilyn C. and Stephen A. Scott	Ryan B. Whitacre and Katherine T. Donaldson	John Bistolfo and Anne Marie Mitchell	Ettinger Lannin Charitable Fund, a Donor Advised Fund of US Charitable Gift Trust	Janice L. Honigberg
Next Restaurant	Susan and Alan Sebulsky	Raymon F. Whitney	Susan K. and Willard L. ^{TD} Boyd	Mr. and Mrs. Jose L. Ferrer	Diane and Thomas Hope
James H. Niehoff and Jolie R. Macier	Mr. and Mrs. Richard J. L. Senior, The Morgan Senior Foundation	Mr. and Mrs. William E. Wolf	Thomas E. Brean	Mr. and Mrs. Conrad T. Fialkowski	Rose Houston Charitable Foundation
Jennifer and Craig Niemann	Sally Sharp	Carole Wood and Carl Jenkins	K. Brooke and Jean-Claude ^T Brizard	Adrian R. Foster	Susan and Tex Hull
Christina J. Norton and John A. Biek	Pam and Tom Sheffield, JS Charitable Trust	I. Joyce Young and Matt Bayer	Sophia Bross	Joanne Benazzi Friedland	Thom Hund and Judy L. Hund
Mark A. Oates Family	Sidley Austin LLP	Elizabeth Yntema and Mark Ferguson	Rosemarie and Dean L. Buntrock	Dr. Sylvia E. Furner	Patricia J. Hurley
Mr. ^{TPD} and Mrs. James J. O'Connor, Sr.	Geoffrey Smith and Catherine Stewart	Mr. and Mrs. Robert Zentner	Dr. William C. Burger ^D	Dr. and Mrs. Robert M. Galatzer-Levy	Datin Tan Fui Lian and Dato Dr. Robert F. Inger ^D
Donna Lee Owens and Megan Owens	Elizabeth L. Snyder	Sara Zion and Tushar Shah	Drew A. Carhart	Leslie Gantz McLamore and Scott McLamore	Irish Woods Foundation
The Richard Laurence Parish Foundation	Tom Sourlis and Susan Eleuterio	\$1,000 – \$2,499	Mr. and Mrs. Walter S. Carr	Maria Garese and Thiago Alfaia	Cheryl and Jeff Jackson
Dr. and Mrs. William R. Parkhurst	The Sparacio Family	Anonymous (21)	Chicago Ornithological Society	John P. Garrett and Lisa Ann Seaman	Carolyn R. Johnson
Jo Ann and Joe Paszczyk	Liz Stiffel	Dora and John Aalbregtse	Dr. Adam Cifu and Dr. Sarah Stein	John & Weezie Gates Charitable Trust	Dr. Carrie Kamp and Dr. Timothy Kamp
Shauna Peet	Kevin L. Stoeckel and Emily Heisley Stoeckel	The Achnacarry Foundation, Lenore and Douglas Cameron	Nathaniel Purdy Clapp	Hannah and Teddy Gates	Anne Kavanagh
Mr. and Mrs. Robert P. Perkaus, Jr.	Ivan G. Strauss	Mrs. John J. Ahearne	Mary Sue Coates	Paul C. Gearen	Melissa and Dennis Kelly
Beverly and Stephen Pinaire	Steve Strohmeier ^E and Josie Brown	AMSTED Industries Foundation	Judy and John Coletta	Mr. and Mrs. John E. Gepson	Mr. and Mrs. William H. Kelly, Jr.
Judith and Charles Pitman	Mary and Harvey Struthers	Ruth Arevalo	James W. Compton ^T	Walter and Karla Goldschmidt Foundation	Gaye Lovett Kelsey
R. Allan and Summer Pixton	Kathleen and Lawrence Sullivan	Mary M. Askelson ^E	Carisa Cooney and Damon Cooney	Mr. and Mrs. David E. Good	Jared King and Carissa Ritner
Anne and Paul Poy	Wayne N. Svoboda	Richard Assmus and Leah Welty Assmus	Janice and Michael Coren	Google	Mr. and Mrs. Paul N. Koch
Elizabeth T. Pyott	Linda J. Swanson and John Seeley	Margaret B. and Harry Axelrod Charitable Trust Fund	Mary and Jim Costello	Dr. and Mrs. Daniel R. Greenberg	Mr. and Mrs. Norman A. Koglin
James A. Radtke and Susan Ann Kressin	Mr. and Mrs. Robert N. Szalay	Mr. and Mrs. William E. Bach	Mark Crane	Eleni and Stephen Griesemer	Mr. and Mrs. Robert D. Kolar
Jack Ringer Family Foundation	Peter M. Vale	Joy L. Bailey	Mr. and Mrs. John A. Daniels	Mirja Spooner Haffner	Karen and Mark Koten
Anita J. Rogers	Shiju Varghese and Christina Chamakala	Lauren M. Batterham and Andrew J. White	Dawn and J.R. Davis	Irving Harris Foundation	John L. Kramer and Louise C. Kramer
Robert A. Rosholt and Sharon L. Brunelle	The Vitale Family Foundation Inc.	Mrs. James N. Bay, Jr.	Richard L. Dees and Nora Flint	Mattie H. Harris	Jennifer M. Krejci
Mr. and Mrs. Jeffrey S. Ross	Kathleen D. Vogt	Elizabeth Anne Beal and Neil Stempel	Nancy Dehmlow and Cameron Dehmlow Dunne	Beth and David Hart	Kelly and Brian Krob
Susan B. Rubnitz	Mr. and Mrs. John R. Walter	Dr. and Mrs. Robert A. Beatty	Cheryl and Michael Del Campo	Marianne Hawk	Dorothy E. Kugel
Charles Ruedebusch and Linda Flack	Mr. and Mrs. Douglas H. Walter	Dana and Ron Benedict	Dr. and Mrs. John R. Dimar II	Barbara J. Hebda	Maureen Lampert
Cynthia Scalzo and Henry Brown	Everett S. Ward ^T and Iris K. Sims	Katie and J. R. Berger	Barbara and David Dodson	Katherine and James Hepp	Jan and Richard ^T Lariviere
Barbara M. Schleck and Gary M. Ropski	Warne Family Charitable Foundation	Betty Bergstrom and Gerald Talsky	Elizabeth and Mark Donnelly	Carolynne and Scott Hertenstein	Sherri and Michael Leahy
Karen M. and Frank L. Schneider	Mr. and Mrs. Michael S. Weis	Yee Man and Lars Bergstrom	Helen Dunlap	Melissa Hilton and Jonathan Perman	Marsha and Scott Lehr
Barbara and Thomas Schnitzer			Mark C. Egan and Katherine Z. Egan	Mrs. Edward M. Hines	Barry Lesht and Kay Schichtel
			Mr. and Mrs. Phillip L. Elbert		Mr. and Mrs. Donald J. Lewis
			J. Thomas Eller		Sharon and Bob Lindgren
			Philip Enquist and Joanna Karatzas		Mr. and Mrs. Mark A. Livengood

Sarah A. Lofgren and Thomas E. Lofgren	Lois Rainey Owens and Kimberly Dawn Owens	Mr. and Mrs. Neil J. Sheehan	Lisa Brown-Tribbett and Charles Tribbett	Barbara Stolberg Adelman and Steven Adelman	Sarah Bermingham and Bill Connor
Renée Logan	Ronna J. Page	Kate M. Sheehy	Mr. and Mrs. Richard E. Uihlein	Mr. and Mrs. William T. Adkerson	Tuhina Bhatt
James Louderman ^E	Helene and Aaron Paris	Timothy C. Sherck	Van Nice Foundation / Jeanette H. Van Nice	Anirudh Ajith	Suzanne and William Bible
Candelario and Elizabeth Lumpkin Celio, The Lumpkin Family Foundation	Mr. and Mrs. Homi B. Patel	James V. Shipp and Nancy Marie Casper	Ryan VanHolsbeke	Jill Althage	Nancy and Christian Bigelow
Mr. and Mrs. Christopher Martinez	Donna and John Patterson	Louis and Nellie Sieg Fund	Mary and Jim Vieregg	AmazonSmile	Rebecca and Todd Blaudow
Mr. and Mrs. Robert G. McCann	Robert Peretti and Quaylin Peretti	Bette H. Sikes and Joan Pederson	Mr. and Mrs. Eric D. Wanger	Keri Ambrosio and Matthew Johnson	Mr. and Mrs. Stephen J. Bloom
Mr. and Mrs. Raymond L. McBride	Abigail Perkins	Dolores Silverman	Robert Wanger	Richard and Andrea Amend	Richard Boling
Bess-Catherine and James McCord	Bonnie S. Peters	Mr. and Mrs. William Sinclair	Ann Wasoff	Patricia Anderluh	Keith D. Bowersox
Timothy S. McCutcheon	Claire Poelking	Mr. and Mrs. Reuben E. Slone	Ernest P. Waud III	Kristine Anderson Coonan and Thomas Coonan	Barbara A. Boyer
Patricia M. McKiernan	Andra and Irwin Press	Maureen Dwyer Smith and Edward Byron Smith, Jr.	Carrie and Jay Weaver	Becky and Andy Anderson	Dr. and Mrs. Bruce H. Boyer
Erma S. Medgyesy	Quarles & Brady, LLP	Toni Sandor Smith	Julia A. Weertman and Nic Zerebny	Mr. and Mrs. Greg P. Anderson	Mr. and Mrs. Robert B. Breisblatt
Elisabeth C. Meeker	Stacey Reicherzer	Christina and Robert Smolen	Megan and William Weiland	Ophelia and Haroon Ansari, PhD	Linda and Michael Bresolin
Mr. and Mrs. Michael E. Mikolajczyk	Robert and Barbara Ann Richards	Kathleen and Walter Snodell	Mary Jo E. Weis	Alona W. Anspach	Sara and Patrick Broaders
Milhouse Engineering & Construction	Richard W. Richardson and Heather Archer	Mr. and Mrs. Jeffrey Sommer	Mr. and Mrs. Bartholomew Weldon	Jan Marie Aramini and Michael Pettersen	Mrs. Cameron Brown
Mr. and Mrs. Craig A. Miller	Abbey Rintels and Caroline McCraw	Mr. and Mrs. Scott E. Sommer	Mrs. Henry P. Wheeler	Priscilla and Leslie Archer	Mr. and Mrs. Steven L. Brown
MONTENEGRO	Roberts Family Foundation	Kathy and Ronald Sonenthal	Bennie E. Whiten, Jr. and Susan E. Sporte	Caesar F. Armenta	Ulrike and Thomas Brucks
Mr. and Mrs. Carl E. Moore, Jr.	Mr. and Mrs. Donald E. Rocap	Michelle Sotak	Mr. and Mrs. Gary D. Wilson	Ann G. Ash	Linda Brummer-Welsh
Mary K. Moreland and Daniel T. Jenks	Roche Diagnostics	Emily and Stephen Stanley	James L. Wilson and Pamela Diane Toler	Mary and Derek Baars	Mr. and Mrs. Thomas Buck
Harold M. and Adeline S. Morrison Family Foundation	Toni and Steve Rosen	The Stebbins Fund, Inc.	Winnetka Garden Club	Richard P. Bail and Janice G. Bail	Maira and Howard Buhse, Jr.
Mr. and Mrs. James G. Murphy	Mr. and Mrs. Richard M. Rosenberg	Leon and Cynthia Stecher	Joseph Wolnski and Jane Christino	Mark Bala and Heidi Mueller	Victoria and Bruno Caccamo
Jeanne E. Murray ^D	Julie and Paul Roth	Jessica and Erik Steffensen	Kenneth A. Youga and Anita Jean	Aimee Baller	Judith A. Caloud
Mrs. Kenneth Nebenzahl	Alan Rottman and Gabriela Ruiz	Mr. and Mrs. ^D James P. Stirling, The Stirling Charitable Fund	Janice C. Young	Kate M. Barnash	Kenneth Carlson and Harriet Carlson
Mr. and Mrs. Jonathan B. Newcomb	Judith F. and Thomas D. Rutherford	Louis C. Sudler, Jr.	Mr. and Mrs. Daniel T. Zagorin	Carlo Basile and Kim Basile	Tammy and Joseph Carmody
Lora Nickels and Thomas Tague	Buzz Ruttenberg	Patricia S. Sullivan	Mr. and Mrs. Phillip C. Zarcone	Douglas D. Baum and Lynne M. Wait	Dr. Rosemary B. Carroll and Dr. Robert E. Carroll
Mr. and Mrs. Peter G. Nolan	Susan D. Schlough and Andrew D. Abbott, PhD	Mr. and Mrs. Nathan Tarcov	Zigterman Family Trust	William T. Beck and Doreine Carson	Mr. and Mrs. ^D M. Blouke Carus
The Gerald Norton Foundation	Mr. and Mrs. Charles S. Schweizer	Mitch D. Theys	Dr. Mark H. Zornow	Gregory A. Becker and Amy K. Becker	Paul Chandler
Stephanie and Bernhard Ortel	Francine Scully-Lippitz and Herbert Lippitz	Lynda Thoman	Mr. and Mrs. Paul L. Zulkie	Michael Beem	Kathryn and Wilfred Chapleau
	David and Judith L. Sensibar	Ashley and Steven Thomas	Susan and Victor Zurcher	Jenna Beltrano	Glenna and Danny Chapman
	Glenn Curtiss ^D and Margaret J. Shaffer	Tiny Tiger Foundation, Inc.	Lisa and Michael Zuroff	Mr. and Mrs. Robert A. Benziger	Susan and Thomas Chemler
	Tracey Shafroth	Dr. and Mrs. Michael M. Todd	\$500 – \$999	Dr. and Mrs. Michael Bercek	Dr. and Mrs. Robert D. Clark
	Mr. and Mrs. Jonathan F. Shaver	Mr. ^T and Mrs. David M. Tolmie	Anonymous (35)		Mr. and Mrs. Joseph L. Cofield II
			Kathleen Abbott		
			Anthony Adams and Kara Breems		

Lisamarie Collins and Joe Collins	Laurie and Bruce Davidson	Anne O. Earle	Elizabeth E. Foster	Felipe R. Gonzalez and Kathleen Courtis	William M. Hales Foundation
Jane B. Colman	Dr. and Mrs. Lloyd Davidson	Glenna R. Eaves and Christopher J. Boebel	Meggan Friedman and Sam Valenzisi	Dr. Gary Gordon and Marilyn B. Hirsch	Dr. and Mrs. George S. Hallenbeck
Joan M. Colmar	Susanne and Kent Davis	Thomas Egan	Susan H. Friedman and Neil R. Friedman	Katherine Gory and Nicolas Rathert	Bruce Hamburger
Reverend Thomas P. Conde	Mr. and Mrs. Dennis De Bruler	Victoria and Thomas Eley III	Anthony Furnas and John Tibble	Terry Grace and Judith Gaietto-Grace	Michael Hammerman
Charles and Lashanah Cooper	Judith A. DeLeon	Nancy and Dan Engel	Gwendolyn and John Gage	Mr. and Mrs. Craig R. Graff	Mr. and Mrs. Thomas Hammerman
Angela and Christopher Coordes	Bailey and Kevin Desai	Gary L. Eppling	Sarah and Nathan Galer	Noel R. and Michael Grego	Joseph R. Hanley and Kristy L. Mardis
Wyatt Cornett and Mark Cornett	William D DeWoskin and Wendy S. Gross	Mr. and Mrs. David P. Facklam	Jeanne K. Gang and Mark Schendel	Gloria and Eric Greuel	Donna M. Hanlon Jensen and Donald M. Jensen, PhD
Abbey Cory Cador and Dominic Cador	Roderick R. Dickinson and Pai Liathong	Tiffany Farriss and George DeMet	Allyson Gartside	Donald Griffith	Arthur R. Hansen, Jr.
Michael Cozza	Mr. and Mrs. William Differding	Fred C. Fetting IV	Carole C. Gatch	Laura and Ryan Gross	Ruth Harmon
The Honorable Barbara Flynn Currie	Dr. and Mrs. ^E Daniel Dilling	Esther and Stephen Fetting	Gavlin Family Foundation	Susan and Thomas E. Guensburg	Trish A. Harper
Robin Currie and Robert Beeching	Sarah and Jim DiMatteo	Amy M. Fielek	Mr. and Mrs. Solomon Geht	Robert A. Habermann	Theresa and Robert Haskell
Mary Cygan and Francis Bruey	Mr. and Mrs. Richard Doonan	Mr. and Mrs. Sanford Finkel	Geoff Goldberg and Lynne Remington	Dr. and Mrs. Christopher Hagenah	Mr. and Mrs. Paul M. Herkes
	Jeff Dreher	Geoffrey A. Flick	Paula A. Golden	David C. Hale	
	Glenda W. Duncan	Dr. Lewis Flint	Mr. and Mrs. David B. Golder		
		Kyle G. Fonjemie			

BENEFIT CELEBRATION GALA

The Field Museum was proud to host its first in-person gala in three years on October 15. The Benefit Celebration Gala welcomed 400 guests and raised more than \$2.1 million in support of the Museum's science, conservation, and education efforts. The event posthumously honored Trustee and former Board Chair John W. Rowe with the *Marshall Field V Award for Distinguished Leadership*.

Guests enjoyed a seated dinner in Stanley Field Hall, as well as roaming cocktail and dessert receptions featuring Field Museum experts on topics including Africa and Egypt, paleontology, geology, and botany. Teen volunteers and members of the Discovery Squad public program team also engaged guests with Museum collections throughout the evening.

(Right) Board Chair Bobby Mehta (second left) and his wife Swati (third left) enjoy fluorescent rocks with Collections Manager Jim Holstein (far right) and several other guests.



^PPast Board Chair ^TTrustee ^EEmployee ^DDeceased

Michael Hervitz and Leeatt Rothschild	Catherine and Douglas Knuth	Robert J. Lueders	Ken Metcalfe	Mr. and Mrs. ^D James J. O'Sullivan, Jr.	Justin Priestman
Jacob Granison Hill	Ray H. Kocher	Dr. Spomenka M. Luedi and Hans J. Luedi	Dr. and Mrs. Ernest E. Mhoon, Jr.	Savitri Pai	Dr. and Mrs. Richard A. Prinz, MD
Joyce and Rich Hirsch	Mr. and Mrs. Melvin J. Koenigs	Alyssa and Yaniv Lusky	Janice Michel	Georga Parchem and Alyssa Parchem	Dr. H.J. Przybylo
Elizabeth and Paul Hletko	Mr. and Mrs. Michael J. Kohler	Henry Luther	Kathleen Miles	Augustine Park and Hannah Park	Dorothy Victoria Ramm
Jennifer and Geoff Hoffman	Mr. and Mrs. John E. Koliopoulos	Yuko and Kevin M. Lynch	Catherine E. Miller ^E	Mrs. Eleanor Parker	Ginevra ^E and Ben Ranney
Carol Honigberg	Theresa Kolodziej	Brooke K. Lyon and Jonathan Lyon	Elizabeth Miller	Diane D. Pascal	Dr. and Mrs. Mark A. Ratner
Mr. and Mrs. Thomas Hopkins	Sotirios Komissopoulos	Judith L. Macior	Emily Marie Miller	Jennifer A. Pavelec	Dr. and Mrs. Timothy W. Raykovich
Elizabeth and Craig Hutson	Stanley L. Korwin and Nancy J. Hall	Carol Ann Macola	Jaclyn C. Miller	Mr. and Mrs. William B. Pearce	James and Carolyn Read
Jessica India and Michael India	Holly and Kelly Kost	Grant MacSwain and Tracy MacSwain	Karen L. Miller	Mr. and Mrs. Jerry K. Pearlman	Mr. and Mrs. Michael J. Rice
Ingredion Incorporated	Dr. and Mrs. Mark F. Kozloff	Mr. and Mrs. Michael S. Magnuson	Michael E. Moats and Kathy Moats	Frederic Pearson	Robert and Amanda Riesterer
Kristen and Josh Jacobs	Krawczyk Family	Timothy Mak	Mr. and Mrs. Thomas M. Monahan	Aurie A. Pennick, Esq. ^T	Myriah Brown and Arnaldo Rivera
Dr. Bert O. Jacobson and Diane Siaroff	Mr. and Mrs. Lee V. Kremer	Colette M. Malone	Judith and Thomas Monroe	Sheldon James Perlow and Sandra J. Allen	Jeanette Rodriguez ^E
Tom E. Jacobson	Audrey Kucia	Alexandra Margo Malos	Beverly J. Moody	Becky and David Perry	Erik Roffelsen and Nelleke Roffelsen-Peters
Deborah Johnson and Angela Nesci	Karen K. Kulhan and Eric J. Kulhan	Nina Mann	Susan and Thomas Moran	Lynn and Brad Perry	Amy B. Rogaliner ^E
Renee and George Johnson	Dr. and Mrs. Peter Lagios	Gabriel R. Marchan	Joyce and Rick Morimoto	James W. Peters	Ron G. Rohde
Char and Jerry Johnson	Eric LaMora and Gilbert Campillo	Lida and William Marcyniuk	Naomi Morris	Mr. and Mrs. Michael F. Petersen	Stephena C. Romanoff
Robert Bruce Johnson and Ann K. Eldred	Craig A. Landon	Cynthia Mark-Hummel and John Hummel	Sabrina R. Morton	Nicole E. Pey and James P. Kracum	Heather and David S. Rose
Allison Jorge	Deborah and Josh Larsen	Mary Martin and Scott Lowe	Mr. and Mrs. Kurt M. Mueller	James G. Picha	Harry B. Rosenberg
Kathleen G. Kallan	Mr. ^D and Mrs. Sigmund L. Lefkovitz	Mr. and Mrs. Emil J. Martinec	Janet Murphy	Mr. and Mrs. Thomas D. Philipsborn	Rosenson Foundation
Joseph Kartheiser and Katie Blasius	Glenn Lefkovitz	Annette and John Martini	Mr. and Mrs. James Murray	Mr. and Mrs. Burt Pickard-Richardson	Dr. Marsha R. Rosner and Dr. Robert Rosner
Laurel and John Kasang	Dr. and Mrs. Raymond M. Leuthold	Heidi and Gregory Mayer	Mr. and Mrs. James W. Myers	Mr. and Mrs. Louis R. Pignotti, Sr.	Mrs. Stephen W. Rothermel
James Kaskas	Bradley Levison and Carrie Herschman	Susan and John McBride	Cynthia and Thomas Neal	John Pincenti	Tricia and Matthew Rydson
Claudia A. Katz	Dr. and Mrs. Michael S. Lewis	Mr. and Mrs. Mark J. McCarville	Mr. and Mrs. Neil C. Nelson	Andrew Plague	Christina M. Sakowski
Cynthia K. Keller	Mr. and Mrs. Robert J. Libka	James McCormack and Evelyn Zatkoff	Eugene Nesbeda and Katherine Dixon	Laurie and John Poelking	Clare M. Salamon
Linda and George Kelly	Charles N. Lindsey and Zikri Yusof	Mr. and Mrs. Jeffrey R. McDonald	Gerald Newman	Jennifer and Joshua Poje	Salesforce.org, Inc.
Jamie M. Kelly ^E	Mr. and Mrs. Bert H. Lindstrom	Dr. and Mrs. Randall K. McGivney	Marjorie and Christopher Newman	Kenneth Pomeranz and Maureen Graves	Norman L. Sandfield
Lee Kendall and Gregory Horvath	Kristin L. Lingren	Stephanie McKean	John Nguyen	Charles A. Pounian, PhD	Sharon M. Savalick
Gina B. Kennedy	Jonathan W. Littman, MD, and Audrey Lynne Strode	Gloria L. McMillan	A. J. Nocchiero	Mr. and Mrs. John W. Prange, PhD	Julie and John Schaff
Debra Kerr and Steven Thompson	Mr. and Mrs. Ariel J. Litvin	Kelly and Jim McShane	Margaret Norman and Gerald Vladimer	Sarah Pratt and Jonathan Pratt	Mr. and Mrs. Ronald Scherubel
William K. Ketchum	Emily and Michael Lucas	Terry J. Medhurst	Leslie and Richard North	Lee B. Price	Judith and David Schiffman
Lynne King Roberts	Peg and Harlan Ludewig	John M. Meeks	Patricia and Neil O'Connor	Mr. and Mrs. John B. Priest	Cody Schmidt and Meredith Vesper
Margaret and Thomas Kittle-Kamp		Steven A. Melnyk, MD	Virginia Olsen		Annette M. Schmit
Joseph J. Klug		Raquel Parra Merino and Ramon Parra Merino	Mr. and Mrs. Robert W. Orr		Dr. and Mrs. Philip G. Schnell
			Alejandro Ortiz		Ann and Thomas Schultz
					Dr. and Mrs. Peter F. Schultz

Elizabeth and Richard Sciortino	Mr. and Mrs. John Tamisiea	Elizabeth Warnock	James A. Alexander and Vicki J. Marshall	Mr. and Mrs. Fernando Arriola	Elizabeth Begolli and Vegim Begolli
Olivia J. Scully	Gayle Taylor	Kimberly and James Watson	Owen Alexander	Bianey Arteaga and Catarino Solorio	Heather C. Behrens
Dr. Michele Semin	Kevin Telford and Connie Luecke	Mr. and Mrs. Walter B. Watson, Jr.	Mr. and Mrs. Thomas D. Allen	Kaye B. Aurigemma	Jennifer Bekkerman and Gerald Bekkerman
Mr. and Mrs. James Semrad	Steven F. Tempel and Deborah Zekich	Mr. and Mrs. David B. Waud	Gloria Alvarez and Gloria Andrade	Catherine Austin	Mr. and Mrs. Donald A. Belgrad
Janis Shaw	Texas Instruments Foundation	Mr. and Mrs. Greg Webb	Renata C. Alves-Nessinger	Saba Ayman-Nolley	Hannah Beltre
Nikki and Mark Shields	Richard Thayer	Leonard L. Weber	Robin A. Amundsen and Kelly Cady	Naaz Aziz	Mr. and Mrs. Stephen E. Benefiel
Shirley C. Shriver	Chad Thomas and Virginia Thomas	Mr. and Mrs. Andrew J. Weddig	Mr. and Mrs. Carl Anderson	Charles I. Bachtell and Valentina M. Cappola	Matthew Benoit and Cathleen Dohrn
Alexander Sikora	Aurea and Richard Thomas, Jr.	Mr. and Mrs. James Weidner	Mr. and Mrs. Craig A. Anderson	Michael Baker	Ellen and George Benson
Ilene Simmons	Mr. and Mrs. Robert W. Thomas	Carolyn M. White	Mr. and Mrs. David R. Anderson	Mr. and Mrs. John T. Baldwin	Jaanine and Jack Bentley
Sharon A. Simmons	Robert L. Thompson	Willard E. White, PhD	Allison and Dwayne Anderson	Jessica Balfour	Michael J. Berg
Maureen M. Slavin	Peter J. Tighe	Mr. and Mrs. Larkin Whitlock	Gregory M. Anderson	Tricia and Bill Ballard	Angela and Alan Bergeson
Ann and John Snyder	Dylan Tilbury	Monica Wilkins	Mary and Paul Anderson	Marguerite and Christopher Baran	Sandy Bergsten and Dave Osborne
Keith Solomon and Elana Beckerman	Mrs. Janine M. Tollestrup	Amy and Chad Williams	Thomas Anderson	Anthony Barash and Terri D. Hanson	Cinda Berry and Arthur Krumrey
Solot and Karp Family Foundation	Margaret Tomaszek-Witry and Lawrence Witry	Kelvin Wing	Susan Anderson-Nelson and Jeffrey Nelson	Lorraine and Randy Barba	Marjorie and Miles Betley
Amanda A. Sonneborn and Peter R Malecki	Shelley Torres and William Aldeen	Bethany Winkleman and Richard Pasiewicz	Elsa Andrade	Ricardo Barboza	Jennifer and Charles Bezold
Margaret Spears and Ronald Spears	Travelers	Sarah and Charles Wolf	Anita Andren and Lennie Naughton	Cassandra Barca	Gerald Bialek
Laura Speck and Kimberley Speck	Sally L. TreKell	Mr. and Mrs. Hugh J. Zentmyer	Kenneth A. Angielczyk, PhD ^E	Leslie and William Barker	Dr. and Mrs. Henry S. Bienen
Faith H. Spencer and Mark Parts	Mr. and Mrs. Barton G. Tretheway	Linda and John Zimnie	Barbara and Bruce Ankenman	Eleanor M. Barnes and Allison M. Barnes	Katie Bigelow
Sarah D. Sprowl	Mr. and Mrs. John L. Turner	Mr. and Mrs. Earl Zingraf	Rachelle Ankney and Ryan Stavros	Erin Barrett Ellefsen and Eric Ellefsen	Mr. and Mrs. John Bigwood
State Farm	Tyson Foods	\$250 - \$499	Apple Computer, Inc.	Joy Barrett	Andrea Billhardt
Deborah and Steve Stefani	U.S. Cellular Corporation	Anonymous (40)	Maria E. Araiza-Torres and Amanda Gomez	Linnea M. Bass	Janet Birchenough-Koehn and Bruce Koehn
Ann Marie Stephenson	Mr. and Mrs. James F. Vallely	Charlotte D. Abarbanell	Ruth Archer and Jim Helke	William Baty	Vonora and Michael Bishop
Amy and John Stevens	Mr. and Mrs. Jack Van Orden	Anthony Acosta	Kevin Arkell	John M. Beal	Sandra Black
Dawn K. Stiers	John M. VanderLinden and John Wm. Butler, Jr.	Roger S. Adamek	Mr. and Mrs. Joshua Arlow	James Bebley and Tracey Ladner	John Blackburn and Nancy Doris
Dr. and Mrs. Douglas W. Storm	Shawn K. VanDerziel and Jay Clarke	Brian J. Adams	Mr. and Mrs. Bruce T. Armstrong	Michael J. Becker	William H. Blair
Christopher E. Strangio	Nicholas Varrone	Rebecca M. Adams	Dr. and Mrs. Barry G. Arnason, MD	Mr. and Mrs. Robert D. Becker	John B. Blankenship and Mohammad M. Zaman
Chi Hwa W. Su	Heather M. Vaught	David Adler	Constance Arnold and Daniel Arnold	Gina Becker-Espinoza	Mr. and Mrs. Philip D. Block IV
Erin Sullivan	Helen O. Veeder	Louise Adler	Michael D. Arnold and Monica Wallace	Dr. and Mrs. John H. Beckerman III	Mr. and Mrs. Irwin A. Blumensaadt, Jr.
Mary Pat and Kirk Sullivan	Emily K. Wagner ^E	Adobe Systems Incorporated	Lynn Arntzen and Matthew Arntzen	Reverend and Mrs. William C. Beckmann	The Boeing Company
Heather and Raj Sultanian	Lisa and Brian Walker	Mary Elizabeth Aguado		Mr. and Mrs. William Bedford	Therese M. Bogs and Wayne Haser
Loretta B. Sweeney	Brandon A. Wall	Francis Aguirre		Richard and Rebecca Beem Foundation	Alexandria D. Bond
Patrick Sweeney and Sharon Brown-Sweeney	Fred K. Walz	Colleen Rogers Aivazian and Erik Aivazian			
Carol C. Swift		Magali Alarcon and Ashley Martinez			
Dorothy and Casmir Szczepaniak		Blair Alexander			

Lexi D. Bond
 Paul D. Bond
 Nora and Tony Bondi
 Norma and Don Bonet
 Mr. and Mrs. Russell
 A. Bonham
 Clarisa Bonilla
 Joe Borchard
 Nathan Borgo
 Mena and David Boulanger
 Rachel H.E. Bowen
 and Kat Connor
 Jessica Boyer
 Dimitar Bozhikov
 Mr. and Mrs. Dennis
 E. Bozych
 Cheryl Brand
 Cecilia Brantley
 Linda Brantman

Julie and Tim^E Bratley
 Mr. and Mrs. Samuel Brauer
 William C. Brauneis
 Jake Breymaier and
 Shannon Breymaier
 Steven U. Brint
 Darin Briskman
 Lena and Jonathan Brodsky
 Natalie Broler
 Leslie and Daniel Brosk
 Mr. and Mrs. Daniel
 J. Brown
 Linda Brown
 Marshall Brown and
 Louise Nora
 Robert Brown
 Ryan and Elizabeth Brown
 Heidi Bruhn
 Dan Brunnert

Georgia Bryan
 Mr. and Mrs. Archibald T.
 Bryant
 Richard Buchen
 Mr. and Mrs. Joshua
 T. Buchman
 Nereyda Bucio
 Thomas M. Buess^D
 John F. Burke, Jr.
 Mr. and Mrs. Timothy
 L. Burke
 Tim Burroughs and
 Barbara Smith
 Mr. and Mrs. Paul Butera
 Frances Cahill and
 Cynthia Cahill
 Paul Camarena and Kara
 Ross Camarena
 Bette Jane Camit
 Dominic Campbell

Mr. and Mrs. Matthew
 Campillo
 Matthew Campuzano
 Susan and Michael
 Canmann
 Stacey Canova and
 Jonathan Kiczula
 Bill Carbonaro
 Heather and Bruce Carlson
 Andrew C. Carpenter
 Jason Carr
 Michelle and John Carr
 Ken Carson and
 Sally Foster
 Mr. and Mrs. Steven
 C. Carter
 Emilio Castaneda
 Cristina Cavallo
 John Centeno and
 Theresa Rowe
 Mary and Richard
 Chamberlin
 Mr. and Mrs. Jogesh
 Chandran
 Suzanne Chapa
 Natali Chavez
 Jack Chen and Margaret
 Bonfardin

Laurel Cherian and
 Sakrut Cherian
 Joan S. Cherry and
 John R. Cara
 Mr. and Mrs. James
 N. Chodora
 Courtney Christoff
 Mr. and Mrs. Terry Chung
 Virginia and Charles Clam
 Mr. and Mrs. Randall Clark
 Louise and Steven Clark
 Andrew Clarke and
 LaDoris Duncan
 Alison S. Claus
 Mr. and Mrs. Stanley Cohn
 LeShana Cole
 Mrs. Roosevelt D. Collins
 Kathleen Collins and
 Charles Newell
 Charles E. Collopy, Sr.
 Gladys E. Connolly
 Dr. Lorraine M. Conroy
 Deandre Cooley
 Malika Cooper
 Alexander Cottingham
 Mathew A. Cotton

Cynthia D. Cox and
 Robert Cox
 Mr. and Mrs. Stephen
 E. Cox
 Julia Cremin
 Ellen and Henry Criz
 Mr. and Mrs. Paul Croitoru
 Dolores E. Cross, PhD
 Susan M. Crowell and
 Kathleen Cooke
 Marie Cuevas and
 Rachel Mayer
 Molly and Joseph Cusick
 Maciej Czechowski
 Valerie M. DaCosta
 Georgene and Joseph
 DaDan
 Ambika and Jay Dalal
 Kip and Vivian Dalke
 Nancy and John Damas
 Michele Daniel
 Jenni Dart
 Mr. and Mrs. Richard
 W. Daspit, Jr.
 Rebecca Dauparas
 Aimee S. Davis^E
 Christopher Davis



EVOLVE 2022

On October 5, the Field Associates hosted its annual EVOLVE fundraiser. The event welcomed more than 200 guests and raised \$79,000 through sponsorships, in-event contributions, and silent auction opportunities. Guests danced to a live band and mingled with Field Museum scientists.

(Left) Attendees of the EVOLVE gala enjoy a night engaging with Field scientists and the work that their contributions help make possible.

Carol and Pierre De Smul	Joanne R. Driscoll	Amber Faul	Elizabeth M. Fullington	Karen L. Granda and John	Robert Hanlon and
Carol DeBiak	Alexandra Drummond	Brandon Feaman	Clauser and Huxley	S. Mrowiec	Barbara MacDowall
Laney Deckrow	and Nathan Eva	Julie A. Federico and	Fullington Patten	R. Lance Grande, PhD ^E	John M. Harrigan and
Katherine Del Rosario	Mr. and Mrs. Joseph	Alton Jay Mitchell	Sara C. Furr ^E	Mr. and Mrs. Richard Gray	Stephanie Jacob
Carrie Delzer James	H. Drummond	Mr. and Mrs. Robert Feitler	Dr. Christopher Galassi	Kristoffer Gredsted and	Victoria Hartman and
and John James	Patricia J. Dryer	Dr. and Mrs. Balbino	Jaime Galdamez	Monica Norzagaray	August Compton
Jennifer Dengel and	Kathy Dull and Mark	B. Fernandez	Charles Gardner and	Pedraza	Alyssa Connell
Alexander Dengel	Templeton	Zachery T. Fernette	Patti Eylar	James C. Green	Haslam, PhD ^E
Daniela Denizet	Thomas Duncan	Laura Ferrell and	Jamie Garland and	Lauren Green	Valerie and Edward
Mikki Denson	Dennis Dunn	Grant Riedesel	Michael Garland	Steve Green	Hatcher
Amanda Dewyer-Schenk	Kathleen M. Dunne	Mary Ellen and Robert	Mr. and Mrs. Frank	Alexander Greenberg and	Farah Hatia and Yasir Sabri
and Danny Schenk	and Paul Boyd	Fieseler	B. Garrett	Elizabeth Gordon	Mr. and Mrs. Allan Hausfeld
Mr. and Mrs. Perry D.	Donald J. Duszynski	Brailio Figueroa and	Katie and David Gelbmann	Mr. and Mrs. Mark	Irina Havera
Di Girolamo	Kelly Duvall	Daniel Johnson	Melissa Genova Hill	J. Greenwood	Mr. and Mrs. William
Samantha Dietz	Stephanie Dykas	Amy and Cameron Findlay	and Joel Hill	L. Dale Griffith and	D. Hawes
Patricia Ann Dihel and	Velda Dykehouse and	Mr. and Mrs. Paul Fishkin	Mr. and Mrs. William	Susan Griffith	Mary Hawkins
Glen Wilson	Patrick Carleski	Mr. and Mrs. Walter	Georgis	Jessie and Robert Grimm	Mr. and Mrs. Max Hawkins
Marilyn Diller	Eleanore C. Dykes	H. Flood	Dr. McGuire Gibson	Lauren Grodnicki	Mr. and Mrs. Franklin
Kathryn M. Dillon	Kate Early	Jaymie Flores and	Sallie and George Gill	Maryann Groner	D. Hayes
Sandra and Jonah Dipane	Andrew and Kathleen	Miguel Zelaya	Mr. and Mrs. William	Ed Gross and Alma	Gary Hayes
Carol and Paul Dittmann	Ebbott	Tiffany and Jeffrey Floresca	H. Gillespie	Blazquez	Andrew Hazard and
Joshua Dlouhy	Louise Ebel	David C. Follmer and	Amanda Gillig	Eric Grote	Anne Heathcock
Son Do	Laurie Eberhardt and	Anita M. Samen	Allen J. Ginsburg and	Mr. and Mrs. David	Lawrence R. Heaney, PhD ^E
Andrew Dobies	Peter Martin	Kim Folta	Judith Ginsburg	L. Grumman	Mr. ^E and Mrs. Philipp
Mr. and Mrs. Robert	Laura and Steven Edgar	Mina Foroohar	Christopher Giorno	Ada Mary Gugenheim	R. Heck
S. Dobis	Anne E. Egger	Mr. and Mrs. George	Deborah Gladstone	and Jon N. Will	Margaret and Matthew
Mr. and Mrs. Kevin	Elizabeth Egli	W. Forrest	and James Stedt	Vishal Gupta	Hefferon
M. Doherty	Lance Empey and	Marcy and Lance Fortnow	James Glazier	Nancy and John	Peter Hegel
Patricia and Leonard	Jennifer Empey	James Foster	Mr. and Mrs. Thomas	Gustaitis, Jr.	Stacy and Trevor Hegrans
Dominguez	Mr. and Mrs. Wayne Eng	Leah Fox	F. Glennon	Mr. and Mrs. Richard	James S. Heim
Brian K. Dominick and	Michelle and Carl England	Melanie Fox	Colin Gliniecki	E. Guzik	Elena Hemmila
Kristin Lenda	Yoga by Allison	Bettina and George Francis	Paula Glitman and	Jessica Guzlas and	Mr. and Mrs. John
Mr. and Mrs. Joseph	Douglas Ennis and Sandra	Warren Fraser and	Doug Stone	Roger Guzlas	Henderson
E. Doninger	Ringelstetter Ennis	Susan Frei	Amy Goberville	Lauren and Fernando	Ryan R. Henke
Candace and Steven	Mr. and Mrs. John B. Evans	Gerald Freedman and	Jan and David Gochenaur	Guzman	Karen J. Hennessy
Donlin	Bradley Ewert and	Elizabeth Sacks	Danny Goldberg	Amy and Gilbert Gwilliam	Mary Ellen Hennessy
April and Paul Donnellan	Rachel Ralph	Mr. and Mrs. Jason	Eileen Goldspiel	Kathleen and Dean Haas	Susanne Henning and
Christine Donovan	Katherine L. Fahey	Freedman	Charlie Gomez	Laura Hacker	Robert Henning
Julie Dorfman and	Harry R. Fair III and	Mr. and Mrs. Clifford	Denise Gonzalez	Dr. and Mrs. Joseph	Lisa and Roy Henrickson
Jerry Herst	Carolyn E. Jordan	Freiberger	Jessica L. Gonzalez	R. Hageman	M. Theresa Herlevsen
S. Downey Fund	Ann and Richard Falkner	Maija Freimanis	Elizabeth L. Goodbody	Joseph P. Hamilton	and Marc Kahan
Mark Doyle	James R. Fancher	Mr. and Mrs. John F. Freund	and Ralph P. Beck	Lucy Hammerberg and	Mr. and Mrs. Erik
Lindsay Drabek and	Elizabeth Fanuzzi	Barrett Fromme and	Richard Gordon and	Kim Hammerberg	D. Hildebrandt
Alexis Sermier	Bridget M. Farrell and	Chad Duffy	Alexa Edick	Catherine and Harold	Paul Hilder and Karen
Linda and George Driggers	Michael Farrell	Claudia Fuentes	Robert F. Gourley	Handelsman	Marshak
				Larry L. Hanes	Cynthia and Michael Hirsch

Donald W. Hitzeman Sara and Alan Hoffman Mr. and Mrs. George B. Hogenson M. Christine Holden Anna M. Holm Ariane Holtschlag and Matthew Highland Laura and Dean Honda Honeywell International Andrew Hoog and Chee Kim Jaap Hoogstraten ^E Thomas A. Hootman and Pamela J. Sisler Elizabeth A. Hopp-Peters and Kurt T. Peters Grace Hou Tun-Jen Hsiao Mr. and Mrs. David Hubbard David Hulsey Dr. and Mrs. Jeffrey L. Hunt N. J. Hunt and Barbara E. Miller Pamela and George Hunter Megan and Nathan Hunter Dr. and Mrs. James D. Hurst Denise Hynes and Richard Van Breemen Mr. and Mrs. Thomas Hysell Chad Idol Anna Ignatowicz and Pawel Ignatowicz Richard M. Isaac Mr. and Mrs. Glynn Isoda Karen and Glenn Jablonski Mr. and Mrs. Roland L. Jabotte Judith M. Jackson and Dannielle G. Jackson Rohit Jacob and Rebecca Joseph Kelli Jacobi Dr. William M. Jagiello Mr. and Mrs. Robert A. Jahnke	Susan Jamerson and Richard Jamerson Mr. and Mrs. Paul A. James Debra Janiszewski Donald Janus Janice A. Jarnholm Catherine A. Jaselskis and Gary G. Alberts Sarah Jensen Olivia Z. Jiang Nancy and Rafael Jimenez Jason Johnsen Carl W. Johnson and Laura M. Bloom-Johnson Mr. and Mrs. James M. Johnson Mary B. Johnson William L. Johnson Lin Johnston Mr. and Mrs. Douglas L. Jones Charles Jones Peggy and Phillip Jones Mr. and Mrs. Robert A. Jones, Jr. Savannah Jonkman David R. Joseph Susan and Stanley Jozefiak Mr. and Mrs. Paul R. Judy Theodore G. Jung, Jr. Pattie Kaczorowski Kevin Kahover Jill M. Kainu and Michael LaBuda Aida Kajs Kevin and Genevieve Kallmeyer Kaitlin and Andy Kamphuis Mary Gloria Kane and Vern H Kerchberger Jared Kaplan and Maridee Quanbeck Bethany Karsten and Nickolus McDaniel	Mary Kay Karzas and Warren K. Reiss Mr. and Mrs. William O. Kasten Mr. and Mrs. Eric Kauffman Loraine Kaufman Foundation Mr. and Mrs. Steve Kaufman Asad Kausar Mr. and Mrs. Michael G. Keck Laura and Don Keefer Brandy and Ryan Keller Denise A. Kelley Dreama Kemp Mary C. Kemp Mr. and Mrs. Terrence Kennedy Mr. and Mrs. Thomas J. Kenney The Honorable and Mrs. Robert J. Kepka Ed Kerstetter Wesley Ketcham Omar S. Khalil Christine Kim and Tristan Schweiger Stephanie Kimmel and Mike Conroy Diana and James King II John and Jenny Kinsella Betty and James Kirk David Kirkpatrick Ashley Kittrell Catherine Kleinmuntz Eileen and Robert Kleps Mr. and Mrs. Kenneth A. Klinger Carissa Klonecz and Alec Bunnell Judith L. Knie Shannon and John Knight Mr. and Mrs. Robert W. Knudsen, Jr.	Cheryl B. Kobetsky Sibyl Kobza Andrea Koenig Mr. and Mrs. Shohei Koide Mr. and Mrs. Ernest J. Konker Steven Konsker Kaitlyn and Theodore Kontopoulos Karen Kooy Jill and Christian Korfist Mr. and Mrs. Joseph A. Kosinski Risha Kotecha Mary and Jesse Kramer Bernard Krawczyk Mr. and Mrs. James R. Krick Mr. and Mrs. Jeffrey A. Kriezelman Mr. and Mrs. Larry S. Krucoff Daniel Kruzell Elizabeth and Gregory Kuhn Marybeth and Edward Kuhrt Kathryn S Kundert Catherine Kurtz and Brian Kurtz Nicole Kwiatek and Charles Tejcek Andy and Annette Lambeta Linda and Robert LaMontagne Richard Landgraff and Bernadette Foley Mr. and Mrs. Dirk B. Landis Barbara A Lannon and Keegan Lannon Christine J. Laperuto and William J. Roznowski Caroline and James Latta Norma and David Lauder Chelsea Lauing and Ben Cox Mr. and Mrs. David Laures Tera and Robert Lavick	Patricia Lawson Cathy G. Lazaroff Aaron Lebovitz and Donna Myers Mimi LeClair Tom Leeds Shannon Lees Lenovo Mr. and Mrs. Kurt A. Lentsch Sheryl Leonard-Schneck and Tom Schneck Mr. and Mrs. Vincenzo O. Leone Joanne and Craig Leslie MSgt. and Mrs. Gary L. Lessenberry Mr. and Mrs. John G. Levi Mr. and Mrs. Howard P. Levine Steve Levy and Jen Levy Pravin Lewis Natasha M. Leyk Gilbert Lichstein and Ruth Czarnecki-Lichstein Ira Lichtenstein and Susan Goldsmith Shenna Lilly and John Werbowecky Linda and Mark Lindberg Sean Lino and Boris Lino Mr. and Mrs. William F. Lloyd William Locacius Mr. and Mrs. John William Locke Dr. and Mrs. Eugene B. Loftin Paula and Paul Loftus Michael Lonero and Joan Toland Sherry and Melvin Lopata Gilbert Lopez and Joyce Orellana Terri and Tony Lorenz Edward A. Lott	Laura Lott Holly and Ralph Love Francis Loye Rebecca and Felix Lu Rosalia Lucchese Jessica Ludeman and Andrew Ludeman Mr. and Mrs. Philip R. Luhmann Andrea Luke Matthew Lumadue Thorsten H. Lumbsch, Ph.D. ^E and Phillip Ramon Jane and Steve Lupton John R. Lurain Mr. and Mrs. Richard C. Lyford Mr. and Mrs. Gregory Lynch Anna Lysakowski and Peter Lysakowski Yuhua Ma Lisa and Alexander MacDougall Peggy Malecki Joanne Malleta Jessica Malmquist and Craig Johnston David Mangefida and Karen Swasey Lisa Marchlewicz Sylvia and Lawrence Margolies Dr. William Markey and Dr. Constance Markey James Martell Daniel Martin and Madonna Ryan Kali and Donald Martin George J. Martin Taihitia Martin and Daniel V. Sutton Mr. and Mrs. Felipe Martinez Heather and Benjamin Mascarello
--	---	---	--	---	--

Mr. and Mrs. John V. Massey	Mr. and Mrs. Bryan K. Miksanek	Kristin Myer and Elyssa Shull	Karen T. Olson and Randall F. Weissman	Patricia and Christopher Pavnica	Mr. and Mrs. Jay D. Pollitt
Wallace Massie	Thomas Miller	Donna Myers	Michael O'Neal and Mary Summerfield	Monica Pawelec and Eva O'Brien	Cheryl and Nicholas Ponce
Dr. and Mrs. James Mathews	Lauren and Michael Bockmier	Dr. and Mrs. Jonathon H. Nadler	Jean and William Oneill	Christopher Pawell	Andrew J. Porte
Dr. Julie L. Mattson and Dr. Richard A. Mattson	Eric Mitchell and Eric Schoening	Mr. and Mrs. Frank B. Nahser	Dr. Mike Oren and Ngoc Nguyen	Caleb Paxton and Milena Pajaro-van de Stadt	Scott Portman and Rosemary Caruk
Charles Mauter	Mr. and Mrs. Thomas Mitchell	Nilima Nanisetty	Amy L. O'Rorke and Kris O'Rorke	David J. Peace and Karen T. Ferrer	Mr. and Mrs. Gary G. Porton
Mr. and Mrs. Henry H. Maze	Dr. and Mrs. Fred Mittelstaedt	Demetria Nanos Jones and Kenneth Jones	Mr. and Mrs. Baltimore F. Ortega	Mike Pearson and Anna Kraftson	Isidro C. Potes
Eileen Mc Carthy	Susan W. Mittman	Mr. and Mrs. Joseph Navarre	Barbara and Alan Oshita	Jane and Larry Pelletier	Katie Potesta
Lisa McClung and Blasko Ristic	Karen and Stanley Mondala	Anna Nazar and Jim Nazar	Mr. and Mrs. James M. Osiol	Alexandria Pellikan	Emma and Tim Pounders
Sharon McCollam	Martha Montes and Amanda Montes	Mr. and Mrs. Matthew Nelson	Deanna Othman	Raquel Perez Diaz	Mr. and Mrs. Michael Prapuolenis
Stuart A. McCrary and Nancy L. Davis	Juan-Antonio Montesinos and Raesue Kao	Lisa Nemeroff	David Otto and Marianne Wojak	Alexandra Peters	Mary and Todd Preissig
Sherry L. McFall and Kenneth J. Porrello	Carrie and Luis Montestruque	Heather Neubauer and Christopher Heimes	Matthew J. Owens	Mr. and Mrs. Andrew H. Shaw	Marcia Press and Barry Press
Donna and Brian McGinnis	Jose Dennis A. Monteverde	Anthony Nguyen and Christina Nguyen	Mr. and Mrs. Shannon Owens	Tawney Peterson	Mary Preston
Mr. and Mrs. J. Luke McGuinness	Dr. Cris Montoya	Thao Nguyen	David Painter and Jean A. Carroll	Verne Peterson and Julie Lipkin	Sandra and Tim Prettyman
Amy and Myles McGuire	David C. Moore and Marilyn S. Moore	Eleanor A. Nicholson	Jaime Palmer	Richard P. Peyton	James Price
Terry McGuire and Sharon McGuire	Ed and Marcia Moore	Karen Nickelson	David Paolone	Diane M. Pezanoski	Dr. Lynn Pries and Rebecca Pries
Mr. and Mrs. Gregory L. McHenry, Esq.	Mr. and Mrs. Leon W. Moore	Andrew Nieland and Morgan Anderson	Linda and Christopher Paris	Mr. and Mrs. Christopher F. Pfaff	Colette Pulfer
John and Judy McIntosh	Phillip Moran	Neha Nigam	Elissa Park and John Quigley	Mr. and Mrs. Jeffrey Pfluger	Mr. and Mrs. John F. Pustola
Jack McKenna	Brittany G. Morgan	Mr. and Mrs. Waldemar T. Niklinski	Soon Park	Trang Pham-Smith and Ryan Smith	Mr. and Mrs. Bruce R. Putman
Donald F. McLellan and Martina M. Keller	Clinton Morgan	Jill Niland	Jacqueline A. Parks	Elizabeth B. Phillips	Adriana and Adrian Quinones
Lorel and Robert McMillan	William A. Morgan and Gwen Herrin	Laura Nitowski and Berkeley Dietvorst	Mary Jo Parks	Joseph Phillips	Camellia and John Radzinski
Mary McNaughton and Robert E. Nerius	Mr. and Mrs. David D. Morimoto	Gayle and David Noble	Ann Parrish and Al Parrish	Marrey and William Picciotti	Joe Raguse
Jo Ann McNaughton-Kade	Emmett Mottl	Marc Nogle	Antonio Pascual and Kimberli Breen	Mr. and Mrs. James E. Piechowski	Princess Karen Ramirez and David Ramirez
Simone McNeil	Cheryl E. Mounts and Carla Williams	June Novalich	Mary Ellen Pascucci and John Morrison	Mr. and Mrs. Edmund Piehler	Rollin Ransom
Dorri McWhorter	Mr. and Mrs. David Mui	Anna Nowak	Mr. and Mrs. Anthony C. Passanante	Mr. and Mrs. Jerome W. Pinderski, Jr.	Sandra Rao
Tamiye Meehan	Mr. and Mrs. Terrence J. Mullen	Rabbi Kenneth Nowakowski	Susan Danial and Umang Patel	Nancy and Michael Pins	Elizabeth Rathje and Robert Taylor
James R. Meindl	Deanna Muran-de Assereto	Valerie and Christopher Nowicki	Audrey Paton	Amanda Piotrowski and Benjamin Piotrowski	Richard H. Ree, PhD ^E
Joan and Jeff Mercuri	Mr. and Mrs. Edward C. Murawski	Erika M. Nye and Michael P. Nye	Jeffrey C. Pattee	Julie E. Piszczek	Emma Reed
Kay and Robert Merrick	Jean and Charles Murphy	Noreen O'Connor	Bruce D. Patterson, PhD ^E	Mr. and Mrs. Walter J. Plank	Jeanne D. Reed
Emily Meurer and Ellen Meurer	Heather Murphy	Ellen ^E and Michael O'Hanlon	Chris and Jim Patterson	Mr. and Mrs. Charles J. Plasil	Muzna and Amjad Rehman
Aret Meyer	Kathleen A. Murphy	Joel Oikarinen	Mr. and Mrs. Thomas G. Patterson	Mary and Joseph Plauche	Jane and Jay Reidy
Robert C. Michaelson	William Murzyn and Jordyn Macabulos Murzyn	Kathy O'Keefe		Mr. and Mrs. Michael J. Plavcan	Mark S. Reiter and Kathleen A. Ward
Stephanie and Grace Miklaszewski		Elizabeth and Jason Oliver		Gregory A. Podczaski	Colleen and Charles Remsberg
					Charles Renaud and Olga Saburova

WALDER FOUNDATION BIOTA AWARDS

Assistant Curator of Herpetology Sara Ruane, PhD, and Negaunee Collections Manager of Mammals Adam Ferguson, PhD received inaugural Biota Awards from the Walder Foundation. These awards provide \$300,000 over three years to early-career researchers doing innovative conservation research.

(Below) Reptiles Curator Sara Ruane, PhD, (right) in the field.



Aldair Renteria	Betsy Ross	Mr. and Mrs. Paul W. Schneider
John Reppy and Anne Rogers	Nancy J. Rossman and Kaitlyn Rossman-Keeling	Mr. and Mrs. Michael L. Schnell
Richard Rettberg and Terry Rettberg	Abbie Roth	Richard Schreiner
Mr. and Mrs. Michael Rhoades	Glenda and Phillip Rowe	Alin and Luke Schubert
Gianna Ricci and Craig Mauri	Debran Rowland and Luke Hanley	Travis Schulz and Gretchen Wolf
Kristina Rice and Jacob Lesgold	Connor Rubin	David Schuster
Linda Richardson	Marilyn K. Ruby	Craig R. Schuttenberg and Colleen M. O'Leary
Mr. and Mrs. Stephen L. Richmond	Tina and Mark Rudins	Carlos S. Schwarz and Georgia Droulias-Schwarz
Cynthia E. Rickman-Williams and George P. Williams	Bobbie F. Rudnick	Jane Schwuchow and Ronald Schwuchow
Maria Rios	Devin and Daniel Rudnicki	Eileen V. Schwuchow-Wehrheim and Thomas Wehrheim
Donna D. Ritson	Jorge Ruiz and Andrea Vega	Dr. and Mrs. Dow Scott
Erika and Daniel Rivera	Jonathan Rumsfeld	Mr. and Mrs. T. Dwaine Sell
Chad Roberts	Noreen and James Ryan	Benita C. Serio
Richard Robertson	Mohamed Salem	Mihra Seta
Susan Robertson	Robert Salm	Amy Sexton
Patrice D. Robinson and Charlie F. Robinson	Michelle Salomon	Bhawna and Rajesh Sharma
Mr. and Mrs. Timothy M. Rockhill	Luis San Roman	Robert Sharp and Dr. Mary Ann Fischer
Susan Rogaliner	Melissa Sanchez and Joel Sanchez	Mr. and Mrs. John A. Shaw
Linda R. Rogers	Marco Sanchez	Shelbi Sheinkop
Tracy and Michael Rogers	Nancy A. Sans	Mr. and Mrs. Charles Shenk
Teri-Ellen and David Rogers	Carrie Sapp	Mr. and Mrs. Brian Sherman
Tim Rohlwing	Mr. and Mrs. Jerome A. Sara	Jarmese Sherrod
Mr. and Mrs. Michael J. Romano III	A. Sara	Judith and William Sherry
Stephena Romanoff Boggess and William P. Boggess III	Coletta Sargent	Michelle Shlimon and James Colquhoun
Dorothy Romberg	Dr. and Mrs. Peter J. Sargon	John Shugrue and Elizabeth Price
Adriana Romero	Syed Sarwar	William Sibilla
Rubi Romero	Mr. and Mrs. Peter Sauerbrei	Lisa and Thomas Siebert
Jennifer Roney	Catherine Savage	Dr. Paul R. Sievert
Helen and Harry Roper	Darline Scelzo	Margaret and Alan Silberman
William Rosales	Meredith and David Schacht	Mr. and Mrs. Alejandro Silva, Jr.
Dr. and Mrs. Neil Rosenberg	Bernadette Scheib and Randal Scheib	Bernadette and Salvador Silva
Gracemary and Peter Rosenthal	Mr. and Mrs. Richard C. Schlake	
	Martin Schmidt	
	Mr. and Mrs. Eric R. Schnadig	
	Michael J. Schneider	

Cathryn Simkins	Mr. and Mrs. Harry C. Steinmeyer	Maryann and Jeffery Taugner, DDS	Dabra Valkenberg and Peter Valkenberg	Jonathan Warobick	Paulette Wright and John Wright
Cecelia Simmons and Leontine Clark	Marjorie M. Stinespring	Victoria Tejeda-Gervais	Agueda Vallejo	Carol Watkins	Mina and Tim Wright
Patricia and Ronald Sindelar	Mr. and Mrs. Howard L. Stocker	Linda and Ernest Tellez	Mr. and Mrs. Robert C. Vallone	Robert and Laura Watson	Susun Xiong and Damien Rodriguez
Stanley Sinsky	Kenneth Stone	Leslie and Brigham Temple	Mr. and Mrs. Gerald A. Van Kollenburg	Julia C. Webb	Eveline Yaghmour
Carol B. Skala	Marlene Storms	Tempus Labs	Tim Van Mieghem	Marilyn and Frederick Webster, Jr.	Julia Yoshino Benavente
Joan K. Skowronski	Jane Stover and Ben Stover	Monique Terry	Deborah and Eugene Varnado	Courtland Weddle and Andrew Toney	Bernadette A. Young and Jessica Young-Eleazar
Margaret Skrmetti and Jerel Bangayan	James R. Streicker and Mary W. Stowell	Fernando Teutli and Maribel Corral	Sara Vegh and Ken Ziejewski	Kathryn P. Weibel and Steve Freeman	Linda and Owen Youngman
Mr. and Mrs. August Skultety	Mr. and Mrs. John J. Streit	Donna and Kevin Tews	Daniel P. Venske	Karen and Richard Weiland	Kristin and Kent Zandstra
Marcia E. Skwarek	Lisa and Kevin Stringer	Alexandra E. Theodosakis	Marie Vesely and Patrick Hoover	Dianne and Michael Weinand	Howard Zar
Walter Slazyk and Sandra Lee Slazyk	Christine M. Struminski	Mr. and Mrs. Nick Thomas	Dr. and Mrs. Emerson Vicuna	Susan Weiner	Eric R. Zarnikow
Adam Smith	Mr. and Mrs. David J. Stueckemann	Jamal Timsah	Catalina J. Vielma	Elliot Weisenberg and Clara Orban	Kathryn Zavala and Jose Zavala Perez
Maria and Andrew Smith	Usha Subramanian and Deepak Raghunathan	Ramon Tiu, MD, and Nicholas Todorov	Hector Vielma and Guacolda Reyes	Mary C. and James Weisman	Maureen Zeller
Charles F. Smith	Mr. and Mrs. Ramzan Sultani	Bruce Tjaden and Heidi Tjaden	Abby Viereggs and Jeff Viereggs	Gene J. Weiss, MD	Jennifer and Henry Zemla
Karen and John Smith	Crista Sumanik	Diane Marie Tkach and James F. Freundt	Warren Vik and Dayna Bateman	Katharine and John Welch	Marisela Zepeda and Raul Ochoa
Madeline Smith and Geri Smith	Elizabeth and James Summers	Virginia Tolks	Jacob Vila	Cheryl Wellman	Hongji Zhang and Zhanxiang Wang
Mary L. Smith ^T	Barbara ^P and Edwin Swanson	Kyle Toman and Samantha Spedoske	Eileen Von Borstel and Robert Von Borstel	Dr. Roy Wesley	Mr. and Mrs. Brian Ziebart
Susan and Michael Soble	Melissa and Mark Swedlow	James Tomaszewski	Susan Vondrak	Mr. and Mrs. Bernard T. Westapher	Shawna and Steven Zimmerman
Vuthipadadon Somchan	Steve Sweeney and Natalie Sweeney	Mr. and Mrs. Wm. Ronald Tomecko	Jean Voss	Dr. and Mrs. Samuel S. Wexler, DDS	Jennifer Zordani
Robert Somrek	Kenneth Swiatkowski and Valerie Schoen	Frank Tran	Kellen Voss and Jessica Voss	Elizabeth White and Margaret Benish	Rob K. Zschernitz ^E
Thomas Sonnleitner and Supriya Mehta	Bob B. Swieczkowski	Mr. and Mrs. James M. Trapp	Daniel Wade	Jill White-Cross and Jane White	Mr. and Mrs. Edward J. Zulkey
Robyn Sotak	Molly Swock	Dana Shepard Treister and Dr. Michael Roy Treister	Dr. and Mrs. Albert F. Wagner	Jaclyn Wickershern	Steve Zutovsky and Maureen Sweeney
Anita and Paul Sowadski	Dr. and Mrs. Jan P. Szidon	Jay Tremblay and Jan Koors	Christopher Wagner and Megan McCabe	Laura Ann Wilber	
Norman F. Spielman	Holly Szpara	Dorothy E. Truesdell ^P	Laurie and Thomas Wall	Audrey Williams-Lee and Byron Lee	
Susan Spielmann-Beckner	Megan and David Szyhowski	Mr. and Mrs. John E. Tulley	Don Waller and Caitlyn Allen	Megan Willis and Gerald Willis	
Sean S. Sprague	Deborah and Michael Szymanczyk	Adam Tumas, Jr.	Kat Walsh	Mrs. Robert H. Wilson	
Mr. and Mrs. Eric Spratford	Ellen and Edward Taaffe	Jennifer Turner and Justin Turner	Olga and Darin Walsh	Malcolm E. Winkler and Tiffany Tsui	
Carolyn and William Springer	Debra and David Takehara	Scott F. Turow and Adriane Glazier Turow	Carolyn Walter	Mr. and Mrs. James R. Wise, Esq.	
Brittany Spry and Timothy Suchomel	Diane Talbot and Alex Wiggins	Sean Underwood and Caitlin Corbett	Marissa and Sean Walters	Matt Wittlief	
Stacy St. Pierre	Maureen J. Talbot and Mary Leas	Jill and David Uswajesdakul	Dr. and Mrs. Leo Wang	Patricia A. Worth	
Gloria Stachnik	Donald Tanis and Kristine M. Brandel	Nancy Uznanski	Tony Ward and Alicia Cressey	Randall Wosilus	
Ingrid and David Stalle	Becca and Sam Tatel	Rebecca Valadez		Mr. and Mrs. Donald P. Woulfe	
State Street Corporation					
Mr. and Mrs. Kurt J. Steib					
Annette and Richard Steinke					

THE EDWARD E. AYER SOCIETY

The Edward E. Ayer Society recognizes donors who remember the Field Museum through bequests, trusts, and other planned giving or life income gifts.

Anonymous (22)
Barbara and Steven Adelman
Dr. Katrin Asbury and Mr. Shawn Greene
Rodney Austin
Mr. and Mrs. James H. Banach
Lorraine and Randolph Barba
Mr. and Mrs. Robert D. Becker
Susan M. Benton^T
Ruth and Robert^D Berns
Susan K. and Willard L.^{TD} Boyd
Richard T. Brannegan^D
Frederick W. Brooke III
Leo R. Buckert
Valerie and Joseph Cablk
Dianne and Thomas Campbell
Rita and John^{TP} Canning
Neil M. Chisholm
Josephine Chyatte
Mr.^T and Mrs. Worley "H" Clark, Jr.
Mary Sue Coates
Mr. Stephen F. Condren
Mr.^D and Mrs. Frank W. Considine
Mark Crane
Rebecca J. Davidson^D
Susan and Mark Dawson

Cheryl and Michael Del Campo
Janet W. Diederichs
Candace and Gary Drimmer
Glenna R. Eaves and Christopher J. Boebel
La and Philip Engel
Fabio T. Fabbri
Carl B. Fausey
Mary and Bruce Feay
Suzette Feher
Sally Fletcher
Dr. and Mrs. Curtis B. Frank
Penny and John E. Freund
Glenn L. Gabanski
Linda and Wilbur^{TP} Gantz
Georgeann Goldenberg
Beth and Robert Gordon
Gilda M. Greenberg^D and Norman Charles Greenberg^D
Delta A. Greene
Joyce and Timothy Greening
Katherine L. Griem, MD
Mr.^T and Mrs. Lewis S. Gruber
Tonja Rizai Hall
David D. Hiller^T
Marjorie and John Hines
Peggy L. Hoberg
Anita and James Hornbrook
Arlys R. Hunt
Judy Johanson
Stacy L. Johnson
Mr. and Mrs. Robert A. Jones, Jr.
Kathleen and Alex Kallend
Eric and Beth Kauffman
Constance^{TP} and Dennis Keller

Mr. and Mrs. Jerry M. Kelly
Patricia A. Kosmerl
Jan and Richard^T Lariviere
Fay^T and Daniel Levin
Diane v. S.^T and Robert M. Levy
Gail J. and Robert B.^T Loveman
Janice and Bernard Mack
Ann C. Mallow
Patricia A. Malloy
Marie Spinozzi Marotta
Mr. and Mrs. Robert G. McCann
Nancy A. McDaniel
William B. McDonald and Ptah Sekhmat Osiris
M. Madlan McKernan
Erma S. Medgyesy
Lois and Robert Moeller
Anne M. Morgan
Sandra L. Mueller^D
Sandra and James Napolitan
Sheila Naughten
John P. Nielsen
Karen A. Nordquist
Mr. and Mrs. John R. O'Connell
Dr. and Mrs. William R. Parkhurst
Jo Ann and Joseph Paszczyk
Marie E. Peruscini and Edward C. Bapple
Susanne Petersson
Mr. and Mrs. Richard J. Pigott
Julia Potter
Mr. and Mrs. Mane E. Pritza
John R. Rahn and Patricia E. Rahn
Dominick S. Renga

Alan Resetar and Donna Resetar
Richard F. Reynolds
Anita J. Rogers
Mr. and Mrs. Benjamin Rooks
Michael J. Roth
Jeanne M. and John W.^{TPD} Rowe
Ryan S. Ruskin^T
Mrs. John Schlossman
Douglas M. Schmidt
Franklin R. Schmidt
Patricia O. Schnadig
Thelma L. Schwartz
Marilyn C. and Stephen A. Scott
Mrs. Stephen H. Sentoff
Mr.^D and Mrs. G. Curtiss Shaffer II
Charlene and Bob Shaw
David T. Shayne
Pamela S. Sheffield
Louise M. Sherman
Joanne Silver
Adele S. Simmons^T
Rebecca Gray Smith
Gabriela and Scott Sparacio
Christopher E. Strangio
Steven Strohmeier^E and Josie Brown
Judith B. Sugarman
Linda J. Swanson
Datin Tan Fui Lian and Dato Dr. Robert F. Inger^D
Lawrence Witry and Margaret Tomaszek-Witry
Linda J. Volino
Rose and Robert Wagner
David A. Wargowski
Nestor R. Weigand, Jr.

Dianne M. Weinand
Willard E. White, PhD
Claudia L. Winkler
Barbara A. Wolf
James G. Young
Kristie Zessin
The Zigterman Family
Christine C. Zogus

2022 ESTATES AND BEQUESTS

The Field Museum remembers the following individuals for their bequests, legacies, and estate gifts in 2022.

Anonymous
Hall Adams, Jr.
Mary S. Allan
Jean R. Armour^T
Lynn J. Besser
Carlene M. Blumenthal
Dr. and Ms. Richard T. Brannegan
Mr. and Mrs. Wiley N. Caldwell, Jr.
Henry T. Chandler
Dr. Evelyn Frank Trust
Lyle Gillman
Jeanne M. Hansen
The Humanist Fund
James C. Hunt
Jeanne E. Murray
Betty D. Prout
Barbara H. West

2022 MATCHING GIFTS COMPANIES

The following companies generously matched gifts from their employees and retirees in support of the Field Museum in 2022.

Abbott
AbbVie
Adobe Systems Incorporated
Apple Computer, Inc.
AT&T Foundation
Bank of America
The Boeing Company
Caterpillar Foundation
Cleveland-Cliffs Inc.
Delta Dental Plan of Illinois
Eversource Energy
Exelon
The Field Foundation of Illinois
The FM Global Foundation
Google
W.W. Grainger, Inc.
IDEX Corporation
Ingredion Incorporated
ITW
JPMorgan Chase Foundation
The John D. and Catherine T. MacArthur Foundation
Masco Corporation
Robert R. McCormick Foundation
McKinsey & Company
Peoples Gas
PNC
Quarles & Brady, LLP
Roche Diagnostics
Salesforce.org, Inc.

Sidley Austin LLP
 SPX Corporation
 State Farm
 Texas Instruments
 Foundation
 Tiffany & Co.
 Total Quality Logistics
 Travelers
 U.S. Bank
 U.S. Cellular Corporation
 Weigel Broadcasting
 Company
 William Blair & Company

2022 GIFTS IN-KIND

Mr.^T and Mrs.^T Roger
 K. Deromedi
 Beth^T and Chris Glass
 McKinsey & Company
 Mr. and Mrs. Neil
 J. Sheehan
 United Airlines

2022 GIFTS IN-KIND TO COLLECTIONS

ANTHROPOLOGY

Carolyn Anderson
 Boris Bogatz
 Brandon Butler
 Mrs. Wyn Cain
 Comunidad Kchwa Runa
 en Chicago
 Regina Fitiao
 John Fritz
 Estate of Waud Kracke
 Richard Lariviere
 Ecole Secondaire
 Kassinu Mamu
 Lemzar Manginsay
 Antoinett Weber Piggott
 Pawnee Nation
 Gabriela Sparacio

Leslie Starr
 Cynthia Weill
 Christopher White
 Herbert Lincoln
 Whittier Estate

BOTANY

Brigham Young University
 Duke University
 Lyndon Erker
 Harvard University
 Joe McFarland
 Missouri Botanical Garden
 National Tropical
 Botanical Garden
 T. S. Quedensley
 David Sanin
 University of Bonn
 University of California
 University of Colorado
 Museum
 University of Kansas
 University of Texas
 at Austin
 University of Vermont
 Dawson M. White

GEOLOGY

James & Susanne Ali
 James Benson
 Irene Broede
 Robert Coleman
 David & Sandra Douglass
 Tom Guensburg
 Rick Hebdon
 Dr. Pat Holroyd, U Cal.
 Museum of Paleontology
 Jisuo Jin
 Daniel. R. Lasco
 Steve LoDuca
 Joseph Maltese
 Dr. Wade E. Miller, BYU

John Ruskamp
 Ben Riegler
 Joyce Randall Senechal
 Charles W Shabica
 Dean and Stacey Sherman
 US National Museum of
 Natural History
 Jack Wittry

LIBRARY

Anonymous
 Philippe Beaujard
 Aural T. Cross
 Juliana Field
 Albert Friess
 Geological Society
 of America
 Hattori Botanical
 Laboratory
 Bruce and Laurel Hertig
 Sally Gregory Kohlstedt
 Datuk Chan Chew Lun
 Robert D.Martin
 Muscarelle Museum of Art
 Alfred F. Newton
 Family of Earl Palmer
 Alison Paul
 Stephen Pruett-Jones
 Oriental Institute of
 University of Chicago
 Chris Rainier
 Alan Resetar
 Bryan L. Stuart
 Texas A & M University
 Margaret Thayer
 Alfred Traverse
 Christina Clayton Vaughan
 Harold Voris
 Alaka Wali
 Rupert L. Wenzel
 George Zug

ZOOLOGY

John Belcik
 Brookfield Zoo
 William C.Burger, PhD
 Richard Colburn
 Terrence C. Demos, PhD
 Michael L. Draney, PhD
 Josef Grego
 Henry A.
 Hespenheide, PhD
 Peter Hlavác
 John Hutchinson
 Hans Klompen, PhD
 Lindsey Laughlin
 Kathryn McCabe, Lake
 County Forest Preserves
 Marc A. Milne, PhD
 Ron Panzer, PhD
 Jorge A.
 Piñedo-Escatel, PhD
 Katherine Prager, PhD
 Mary Anne Rodgers
 Jan Ružicka, PhD
 Shedd Aquarium
 Jennifer Slate, PhD
 University of Chicago

RESEARCH ASSOCIATES, ADJUNCTS, AND EMERITI

**The Gantz Family
 Collection Center, Keller
 Science Action Center,
 and Negaunee Integrative
 Research Center would
 like to thank their many
 Research Associates,
 Adjunct Curators, and
 Curator Emeriti for
 their collaborations
 over the years.**

Windsor Aguirre
 William Surprison (Bil)
 Alverson
 Diana (Tita) Alvira
 Grace Anderson
 Thomas Anton
 Gabriel Arellano
 Dean Arnold
 Gloria Arratia
 Peter Avis
 Emily Baca Marroquin
 Daniel Ballhorn
 Rosemary Kathleen
 Barraclough
 Fred Barrie
 Brian Bauer
 Allison Beck
 Deborah Bekken
 William Bemis
 Lois Biggs
 Daniel Blake
 Richard Blanton
 Rodrigo Botero
 Charles Kevin Boyce
 Mark Bramstedt
 Robert Michael Brattain

Adriana Bravo
 Paul Brinkman
 Stefania Briones
 Christopher A. Brochu
 Bennet (Ben) Bronson
 James A. Brown
 Michael A. Bryson
 Jason Bystriansky
 Rosa Cabrera
 Edwin Cadena Rueda
 Andrew Campbell
 Jacob D Campbell
 Michael “Miggs” Armand
 P. Canilao
 João Capurucho
 Christopher Carleton
 Jarrett
 Matthew T. Carrano
 Mónica R. Carvalho
 Mitchel Castro Alvarez
 Sophia Chacaltana-Cortez
 Gabrielle Choimet
 Stephanie Clark
 Julia Clarke
 Michael Ivor Coates
 Raymond G. Codrington
 Timothy M. Collins
 Michael David Colvard
 Richard Condit
 Jacob Cooper
 Peter Crane
 Ana Crespo
 Ana Croegaert
 Ana Croegaert
 Darin Croft
 Thomas Cullen
 Nicolas Dauphas
 Andrew Davis
 Noe U. De la Sancha
 Paulo Eduardo De Oliveira

Deborah Delgado	James G. Graham	Douglas Kiel	Matthew McDowell	James L. Phillips	Hans-Peter Schultze
Terrance "Terry" Demos	Lance Grande	Susan Kirt	Amy McLachlan	Nigel Pitman	Christopher Scotese
Carl W. Dick	Anne L. Grauer	Az Klymiuk	Sean B. Menke	Roy E. Plotnick	Lydia Scott
Michael O. Dillon	Lawrence Grossman	Nicholas (Nic) Kotlinski	Gary Merrill	Gareth Powell	Jodi Sedlock
Pradeep Divakar	Thomas Guensburg	David Krause	Paula M. Mikkelsen	Linda Prince-MacKechnie	Rebecca Seifried
Molly Ann Doane	Juan Guevara	Daniel Ksepka	Joseph Milanovich	Mane Pritza	David Sepkoski
Marlene Donnelly	Attila Gyucha	Patrick Kück	Heather Miller	Ayesha Qazi-Lampert	Tatiana Sepúlveda
Seth Donoughe	Jonathan Haas	Zoe Kulik	John Monaghan	Kareem Rabie	Paul Sereno
Michael L. Draney	William Hammer	Mario A. LaMothe	Katherine Moore Powell	Ashwin Ravikumar	Amie Settlekowski
Isabelle Druc	Yara Haridy	Vincent M. LaMotta	Corrie Moreau	Timothy A. Rawlings	James Shannon
Paul R. Duffy	John M. Healy	Charo Lanao	Debra (Debby) Moskovits	Gayatri Reddy	Nicola Sharratt
Regan Dunn	Spencer Hellert	Tyrone H. Lavery	Gregory M. Mueller	Iza Redlinski	Neil Shubin
Mariano Roy Duya	Luis Francisco Henao-Diaz	Patrick Leacock	Luis Muro	David Reid	Christian A. Sidor
Timothy Earle	Mitch Hendrickson	Steven Leavitt	Donna Nash	Laura Rericha-Anchor	Velizar Simeonovski
Bethany Elkington	Josh Henkin	Amanda Lee	Jon Nations	Alan Resetar	Steven B. Simon
David Elliott	Patrick Herendeen	Ana Lemos	Eugenio Nearn	Beatriz Reyes	Michelle Singleton
John J. Engel	Andrew L. Hipp	Blanca León	Alfred F. Newton	Danielle Riebe	Heather Skeen
Ignacio Escalante Meza	Sean Hoban	Scott Lidgard	Linda Nicholas	Olivier Rieppel	Graham Slater
Jacob Esselstyn	Jen-Pan Huang	Mark Liechty	Christine Niezgoda	Marcos Antonio Ríos Paredes	Arif Smith
Mason Fidino	Sabine Huhndorf	Sara Lipshutz	Jasmine Nirody	Mario A. Rivera	Nathan Smith
Margaux Fischer	Rainer Hutterer	Mark Littman	Lisa Niziolek	Neil Adam Smith	
John Flynn	Boris Igic	Jen Lobo	Christopher R. Noto	D. Doel Soejarto	
Michael Foote	Dilyana Ivanova-Zieske	R. Eric Lombard	Philip Novack-Gottshall	Rodrigo Solinis-Casparius	
Catherine Forster	David Jablonski	Dylan Lott	Patricia Novick	Robert Stallard	
Adrian Forsyth	Christine Janis	Maria Cecilia Lozado Cerna	Lynn K. Nyhart	Charles E. Stanish	
Matt Friedman	Sharon Jansa	Robert Lücking	Carter O'Brien	Kathrine Starkweather	
Jörg Fröbisch	Christopher C. Jarrett	Ernest Lundelius	Janine Ochoa	Thomas Stephan	
Gary Galbreath	Bruce Jayne	James Luteyn	Rahul Chandrashekhar Oka	Scott J. Steppan	
Chelsea A. M. Gardner	Levi Jenkins	Sean Lyon	Link Olson	Betty Strack	
Bucky Gates	Zi-Feng Jiang	Miguel Macedo	Anna K. Ormiston	Bryan L. Stuart	
Timothy Gaudin	Matthew H. Johnson	Renan Maestri	Víctor R. Pacheco Torres	Robert B. Stuebing	
Daniel L. Gebo	Carolyn Schiller Johnson	Stephen Mahony	Luciano Palmieri	Stuart S. Sumida	
Jochen Gerber	Peri Johnson	Pete Makovicky	Somsak Panha	Stephen Sutton	
Paul Gignac	Laura Junker	Robert Martin	Nikos Papadopoulos	Gavin Svenson	
Almira Gilles	Marian Kadushin	Roberta Mason-Gamer	Khwanruan Papong	Paula Tallman	
Gonzalo Giribet	Christian Kammerer	Wilfredo Matamoros	Frank Pascoe	Fui Lian Tan	
Ian Glasspool	Kuswata Kartawinata	Elio (Wayu) Matapi	Bruce Patterson	Donald Charles Taphorn	
Mark Golitko	J. Mark Kenoyer	Neal Matherne	Alison Paul	Baechle	
Valentina Gómez-Bahamón	Julian C. Kerbis-Peterhans	Molly McDonough	William J. Pestle	Jan Johan ter Poorten	
Eric Gorscak			Constantine Petridis	Weston (Wes) Testo	

Margaret Thayer
Michelle Thompson
Ryan Thoni
Robert M. Timm
Susumu Tomiya
Luis Alberto Torres
Montenegro
Andrea Twiss-Brooks
Nathan Upham
Sylvia Vatak
David Vaughan
Benjamin R. Vining
Matt Von Konrat
Harold K. Voris
Robert S. Voss
Heather Walder
Alaka Wali
Joseph F. Walker
J. Richard (Jonathan) Walz
Erin B. Waxenbaum
Paul W. Webala
Mark Webster
Fred E. Wells
Jun Wen
Mark Westneat
Robin Whatley
Alexander White
Jelle Wiersma
Sloan Williams
Edward Wilson
Karen Wilson
Christopher Wirth
Jack Wittry
Yun-Hsin "Becky" Wu
Yaowu Xing
Kenneth Young
Sera Young
Nyree Zerega

WOMEN'S BOARD EXECUTIVE COMMITTEE

The Women's Board promotes the Field Museum's scientific programs, exhibitions, and educational outreach. Members facilitate philanthropic activities to provide essential unrestricted and restricted support.

Beth Glass^T
President, 2022–2024

Amanda Rutledge
*Vice President,
2022–2024*

Lynda Williams
*Vice President, 2021–2023,
and Benefit Celebration
Gala Co-Chair, 2022*

Sandra Deromedi
*Immediate Past President
and Science Salon
Co-Chair, 2022–2024*

Barb Brown
Secretary, 2022–2024

Jeannie Tisbo
Treasurer, 2021–2023

Laurie Kracum
*Member at Large,
2021–2023*

Carrie Donaldson
*Member at Large,
2022–2024*

Anu Aggarwal
*Women in Science
Luncheon Co-Chair, 2022*

Alexis Eyler
*Member Engagement
Chair, 2022–2024,
and Women in Science
Luncheon Co-Chair, 2022*

Susan Faurot
*Behind-the-Scenes Tour
Co-Chair, 2022–2024*

Carrie Healy
*Field Dreams Co-Chair,
2020–2022*

Megan Hoffmann
*Membership Co-Chair,
2022–2024*

Beth Kauffman
*Membership Co-Chair,
2022–2024*

Donna Keller
*Annual Appeal Co-Chair,
2022–2024*

Kathleen Klaeser
Nominating Chair, 2023

Kelli Klauber
*Benefit Celebration
Gala Co-Chair, 2022*

Dorothy Marks
*Outreach Co-Chair,
2022–2024*

Jennifer Martay
*Field Dreams Co-Chair,
2020–2022*

Sally McDonald
*Field Dreams Co-Chair,
2022–2024*

Leslie North
*Behind-the-Scenes Tour
Co-Chair, 2022–2024*

Bev Pinaire
*Outreach Co-Chair,
2022–2024*

Laura Podjasek
*Annual Appeal Co-Chair,
2022–2024*

Pauline Sheehan
*Science Salon Co-Chair,
2022–2024*

Lesley de Souza
Science Advisor (Ex-Officio)

Sri Sullivan
*Membership Co-Chair,
2022–2024*

Carole Wood
*Women's Board
DEAI Committee
Representative,
2022–2024*



WOMEN IN SCIENCE LUNCHEON

49

On May 10, the Women's Board hosted Dr. Kim TallBear for the first in-person Women in Science Luncheon since 2019. She is a celebrated Indigenous scholar whose remarks were part of the Museum-wide celebration of the opening of *Native Truths: Our Voices, Our Stories*. Dr. TallBear delivered a keynote address to an audience of 400 guests and was joined by Field Museum Curator Emeritus Alaka Wali, PhD, for a moderated conversation and audience Q&A.

Guests were treated to a special luncheon menu developed in collaboration with The Sioux Chef, a Minneapolis-based company devoted to revitalizing Native American cuisine. Prior to the lecture and luncheon, Dr. TallBear spoke with 45 young women from Chicago Public Schools about careers for women in scientific fields.

(Above) Guests at the Women in Science Luncheon enjoy a thought provoking keynote address by Dr. Kim Tallbear.

FIELD ASSOCIATES

The Field Associates are committed to engaging young professionals through dynamic networking leadership opportunities, and fundraising to support scientific discovery and public education.

EXECUTIVE COMMITTEE

Alin Schubert^T
President 2020–2022
Risha Kotecha
Vice President 2020–2022
Emmett Mottl
Secretary
Lexi D. Bond
Communications Co-Chair

Matt Owens
Development Co-Chair
Kyle Fonjemie^T
Development Co-Chair
Ani Ajith
EVOLVE and DEAI Co-Chair
Tuhina Bhatt
EVOLVE Co-Chair
Amy Sexton
EVOLVE Co-Chair
Caesar Armenta
Membership Co-Chair
Andrew J. White
Membership Co-Chair
Dan DeWitt
Programming Co-Chair
Charles Zidek
Programming Co-Chair
Jenna Beltrano
DEAI Co-Chair

GIVING DAY AMBASSADORS

The following donors, members, volunteers, and staff served as Giving Day Ambassadors. They played a vital role in the success of this initiative by extending its reach through their networks and raising funds.

Christine Alexis^E
Scott Anselmo
Mary Askelson^E
Mary Baars
Ann Baikie
Rachel Bailly^E
Katie Baltensperger^E
Stanley Banks^E

Marguerite Baran
David Becker
Megan Bradley^E
Lucretia Brickhouse^E
Lakita Brooks^E
Reda Brooks^E
Luciana Brown^E
Shawn Cobbs^E
Aimee Davis^E
Alex Dehgan
Abigail Derby Lewis^E
Sandra Deromedi^T
David Drake^E
Laura Edgar
Elisa Eldam
Gail Ellenbaum
Alejandra Fabian^E

Trish Farrell^E
Chandler Cohron^E
Jane Garner
Beth Glass
Carlos Gutierrez^E
Tonja Hall
Matt Harmon^E
Brandi Harper^E
Alyssa Haslam^E
Erika Hasle^E
MaryPat Hofer^E
Janet Hong^E
Jaap Hoogstraten^E
Syed Husain
Calvin Jenkins, Jr^E
Tiffany Johnson^E
Sabrina Johnson^E
Elyse Kallen

Ellen Karp
Charles L. Katzenmeyer^E
Jamie Kelly^E
Kalyn Kennedy^E
Caryn Knowles^E
Katie Knox
Bakari Lewis^E
Jenna Lieblich^E
Alex Lipp
Ahmad Lucas
Alexandra Lucio^E
William Maas^E
Lileas Maier^E
Kyle Malone^E
Colette Malone
Beth McDonald^E
Catherine Miller^E
Nicole Mireles



GIVING DAY 2022

Giving Day 2022 showcased Museum initiatives and inspired action among supporters of all ages. 894 donors raised \$562,700, with 84 Ambassadors growing the Field Museum's community to further our mission. 120 staff and volunteer donors gave more than \$47,000.

Research Scientist Maria Valdes, PhD presented on the Field's meteorite collection. Studying them helps us understand how planets and asteroids formed and how life evolved on Earth.

(Left) Gifts from donors make Field Museum science possible, from here in Chicago to the poles.

Melissa Mladek
 Malika Morris^E
 Nick Nicketakis
 Lisa Niziolek, PhD^E
 Ellyn Nugent^E
 Carter O'Brien^E
 Ariana Ochoa^E
 Jingmai O'Connor, PhD^E
 Ellen O'Hanlon^E
 Michael Padilla
 Bruce Patterson, PhD^E
 Beverly Pinaire
 Ella Pittman-Jenkins^E
 Elaine Purnell
 Ginevra Ranney^E
 Eleanore Rendleman
 Jacob Robinson^E
 Jeanette Rodriguez^E
 Amy Rogaliner
 Latrice Rogers^E
 Bridgette Russell^E
 Mariah Ryce^E
 Debra Salinas
 Sasha Samochina
 Vicky Sanchez^E
 Rachel Sandoval
 Sara Saucedo^E
 Maggie Schneiderman^E
 Dawn Schreiner
 Paulette Scrima^E
 Jill Seagard
 Jacob Shuler^E
 Julian Siggers, PhD^E
 Michelle Siu
 Steven Strohmeier^E
 Doug Stroup
 Annie Sullivan^E
 Scott Tews^E
 David Thomson^E

Stephanie Ticas^E
 Madeleine Tudor^E
 Arman Virani^E
 Robert Von Borstel
 Damita Webster^E
 Ja-Quel April West
 Kuwannia Wilkins^E
 Megan Williams^E
 Darnell Williams^E
 Beatrice Zaragoza^E
 Julia Zuniga^E

VOLUNTEERS

Jason Abrams
 Eva Abreu
 Tanya Aceves
 Valery Adorno-Cruz
 Skyler Albert
 Caleb Alexander
 Kathleen Allan
 Lauren Altman
 Naomi Altman
 Mia Andrews
 Bob Andrini
 Jacob Annes
 Mumith Araaf
 Jan Marie Aramini
 Josephine Archuleta
 Mayrav Bader
 Amir Badri
 John Balaban
 Julie Balakrishnan
 Bobbi Ball
 Julia Banks
 Stanley Banks
 Mery Elyn Baron-Pocius
 Lisanne Bartram
 Camila Bautista
 Simon Bautista

David Becker
 David Beer
 Danielle Beisecker
 Janice Bell Kaye
 Max Bennett
 Deanie Bergbreiter
 Betty Bergstrom
 Annabel Berk
 Gloria Berkwitz
 Dyanna Bernier
 Allan Bernstein
 Violet Bethke
 Nancy Bigelow
 Erryn Blake
 Tracy Blegen
 Marc Block
 Sophie Bloomfield
 David Boehnlein
 Helen Bonbrest
 Katherine (Katie) Bora
 Mary Boswell
 Robert Boswell
 Theresa Boswell
 Hannah Bradford
 Jimmy Brancato
 Laurel Bresnahan
 Erik Breving
 Zalman Brimm
 Irene Broede
 Elizabeth Bruce
 Samuel Brusstar
 Lorraine Bujan
 Peter Buol
 Ruby Bustamante
 Alexander Buttala
 Joseph Cablk
 Sofia Caicedo
 Azul Canon
 Drew Carhart

Emily Carnalla
 William 'Bill' Carroll
 Robert Case
 Emma Casey
 Briselda Casimiro
 Ellis Caspary
 Cristina Cavallo
 Kathleen (Kate) Cescon
 Mary Chaiken
 Lap Chan
 Lei-Lani Chan
 Mei Chao
 Bernice Chen
 Jonathan Chen
 Lucy Chen
 Wen-Yueh Chen
 Yeong Fu Chen
 Sydney Choi
 Karina Choksi
 James Christian
 Chyi Chung
 John Cieszynski
 Amelia Cifu
 John Cipriano
 William Collins
 Olivia Cook
 Lawrence Coronelli
 Carole Cotter
 Margaret Crawford
 Bridget Curry
 John D'Angelo
 Harpreet Datt
 Ryan Davila
 Lindsey Davis
 Suellen De Barros
 Laura De Los Santos
 Carol DeBiak
 Jesus (JD) Delgado
 Melissa Dessent

Jaiveer Devnani
 Allison Dine
 Philip Dittmann
 John Doherty
 David Dolak
 Annaliese Dorchinecz
 Nathan Dover
 Bill DuBois
 Laura DuBois
 Tareisha Dunlap
 John Dunn
 Thomas Durica
 Amelia Dutta
 Velda Dykehouse
 Jenny Earlandson
 Ralph Earlandson
 Liabella Eccarius
 Gwyneth Elimon
 Eric Elshtain
 Imogen Eyler
 Lucas Eyler
 Annamarie Fadorsen
 Rory Fallmer
 Hannah Farrell
 Scott Farthing
 Conor Finn
 Marsha Fischl
 Apollo Fisher
 John Fitterer
 Delia Flores
 Jenae Franklin
 Christine Frazer
 Hazel Fricke
 Lila Fried
 Sylvia Furner
 Glenn Gabanski
 Uma Gabrielle Cantor
 Gerard Gagne
 Patrick Gancarczyk

Peter Gayford
 Stephen Gieser
 Paula Glitman
 Renee Goddijn
 Jennifer Golas
 Mitchell Goodknecht
 Timothy Greening
 Ann Grelyak
 Ana Grieve
 Victoria Grigelaitis
 Molly Groves
 Susan Guensburg
 Rebecca Guera
 Gayle Guzik
 Richard Guzik
 Amy Gwilliam
 Susan Hamnik
 Roger Hand
 Maura Hanley
 Karen Harlander
 Joyce Hecht
 Marilyn Hecht
 Noah Hedgeman
 Toyia Hemingway
 Tanya Hemphill
 Wendy Herder
 Fatima Hernandez
 Grant Herrejon
 John Hill
 Thomas Hillwertz
 Mark Hirsch
 Edward Ho
 Meghan Hoeftling
 David Hofer
 Marjorie Hoffman
 Lucy Holden
 Richard Holm
 Joanna Hosteny
 Diane Houdek

Astarte Howell	Lucia Kustra	Sean McKee	Bryan Nugent	Jocelyn Ramirez	Karen Sholeen
Harrison Howell	Pearl Kwan	Etta McKenna	Evan Oldham	Sonia Rana	Kaavya Shriram
Briana Hryhorysak	Paige LaCour	Latisha McKenzie	Michael O'Leary	Vikram Rao	Elizabeth Simmons
Patrick Hu	Thomas Lane	Elisabeth Mead	Sylvia Orellana	Loran Recchia	Cortney Sindelar
Sally Hundley	Caroline Langs	Trinity Medellin	Frederick Orendach	Kinzie Reed	Vansh Singh
Antony Ilievski	Beatrix Larsen	Katherine Merrill	Marie Orendach	Susan Reinke	Terri Sinnott
Thomas Ioppolo	Nicole Lavko	Patricia Miller	Maria-Isabel Orozco-Vela	Colleen Remsberg	Rebecca Smith
Bernice Jacobs	Emma Lazarus	Thomas Miller	Morgan Orzech	Jorey Reyes	Robert Somrek
Norene Jamieson	Catherine Lee	Leslie Mindeman	Mildred Osgood	Inmagela Rivas Abreu	Beth Spencer
Sarah Jano	Raquel Lee	Richell Mintzlaff	Saivone Otero	Debbie Roberts	Robert Spieler
Diego Jimenez	Yerin Lee	Jacqueline (Jackie) Mitchell	Erin Parker	John Rosalie	Rebecca Sponenburg
Judy Johanson	Jessica Lembke	Melissa Mladek	Debra Parkhurst	Olly Rosen	Thomas Srnak
Gregory Johnson	Mariela Leon	Paul Moncada	William Parkhurst	Michael Roth	Marc Stackler
Adelaide Judy	Elizabeth Leverso	William Montag	Marianne Parrillo	Janet Rothkopf	Christopher Stephens
Sabrina Jurrius	Shu Yu Lin	Gabriela Montoya	Kathryn Passaglia	Charles Ruedebusch	Zoe Stergiannis
Isaac Kalathiveetil	Lisa Lisowy	Garrett Moore	Tom Pawlik	Verna Ruiz	James Stola
David Kalensky	Jonathan Littman	Samuel Morales	Andrew Peldunas	Randy Rust	Christine Stout
Corinne Kampe	Jessica Livingston	Anita Morgan	Lilianna Peppers	Juana Salcedo Meza	Lisa Stringer
Nived Karthik	Loretta Long	John Morris	Olivia Perozo	Robert Salm	Chi Hwa Su
James Kase	Nina Los	Don Morrison	Mary Anne Peruchini	Arturo Samano	Cayden Sudworth
Kaylee Kasper	Peter Lowther	Albert Moy	Therese Marie Peskowits	Nina Sandlin	Lorinda Sues
Bruce Keating	Mary Jo Lucas-Healy	Ram Moy	Fran Peters	Maria Sarwark	Lauri Sugerman
Patrick Keating	Cecilia Lukas	Soo Lon Moy	Sierra Philbin	Lana Schade	Sorin Sukumaran
Elaine Kelley	Charlene Lyford	Jeanne Mueller	James Piekarczyk	Esther Schechter	Noah Sullivan
Thomas Kerstann	Richard Lyford	Eileen Murphy	Walter Polinski	Cynthia Schmadeke	Kellie Swadba
Mary Ann Khan	Michael Machura	Darlene Murray	Constance (Connie) Porteous	John Schmadeke	Jennifer Swillinger
Layla Kimmons	Evan Madden	Phoebe Murtagh	Veronica Primerano	Annette Schmit	Adrienne Szulczynski
Janice (Jan) Kingman	Sandra Maki	Atchaya Muthupalaniappan	Holly Prindle	Dawn Schreiner	Jeffery Taugner
Alexandra Kirschner	Kenneth Manchen	Francisco Nava	Mane Pritza	Phyllis Schulte	Rebecca Taylor
Rachel Kistinger	Jose Mari	Gina Negrete	David Prus	Daniel Searcy	Laura Teipe
Nancy Klaud	Georganne Marsh	Gina New	Anita Punkay	Ava Sendelbach	Alyssa Theisen
Madison Kline	Benjamin Martinez	Derek Newbury	Betsy Quail	Prakrti Senthil	Cynthia Theobald
Joanne Kluga	Jesse Martinez	Sarah-Jane Nicholson	Elaine Quinn	Veronica Serrano	Nallely Torres
Timothy (Tim) Knuth	Rachel Martiniak	Karen Nolan	Andrea Quintana	Lauren Shapiro	Emina Trifunovic
Sebastian Kolaj	Megan Marvin	Robert North	Koula Quirk	Karen Sharpe	Gregory Trush
Mary Konkel	Richard Maryonovich	Caroline Norton	Eleanor Raidt	Theresa Shen	Nicole Urell
Sandra Kramer	Gabriela Mata	Jackson Novak	Fernanda Ramazzini Staudt	Elizabeth Shepherd	Teresa Vaca
Danny Kreider	Eva Matcuk-Gaiownnik	Michele Nowak	Cristal Ramirez	Judith Sherry	Natali Valencia
Kristine Kulp	Katherine Matott			William Sherry	Mary Valsa
Sara Kumar	Stephanie McCarthy			Sophia Shin	Enya Vazquez

Anna Villanyi
 Belen Villegas
 Darren Vilmin
 Linda Volino
 Andrew Vranicar
 Usha Vyas-Major
 Tatziana Wachter Holden
 Phyllis Walden
 Austin Waldron
 Alexis Walters
 Bella Waltzer
 Jacoba (Yoka) Ward
 Denise Washington
 Wadjina Washington
 Mary Wilke
 Kuro Wilks
 Anne Willmore
 Philip Winn
 Jack Wittry
 Barbara Wolf
 Deena Wolfson
 Seck Wong
 Lelia Woods
 Grace Yau
 Jameson Yong
 Julia Young
 Kurt Zahnle
 Leah Zaloudek
 William Zandrew
 Howard Zar
 August Zbylut
 Carolyn Zeng
 Olivia Zimmerman
 Steven Zitowsky

TRIBUTE GIFTS

IN HONOR OF

Anu Aggarwal
 Savitri Pai

Gregory Anderson
 Anonymous

Kieran Artley
 Tong Chui Koh

Rachel L. Bailly^E
 Carolyn R. Johnson

Chip Biscuit
 William Taney

Linda Brantman
 Stanley Sinsky

Olivia Bray
 Courtney Christoff

Michael T. Burns
 Lisa E. Brown and
 Evan S. Brown

Sue and Jerry Cismoski
 Mr. and Mrs. John J.
 Hirschle

Patrick Fullington Clauser
 Elizabeth M. Fullington
 Clauser and Huxley
 Fullington Patten

David L. Cotton^T
 Charles L. Katzenmeyer^E

Sandy Deromedi^T
 Joan M. Colmar

Mr. and Mrs. David C. Grinnell
 Lenore L. and William S.
 Macdonald
 Patrick G. and Shirley W.
 Ryan Foundation

David A. Dolak
 Marcia L. Zuckerman

Judith M. Dye
 Patricia and Charles
 Erickson

Patricia M. and Charles Erickson
 Judith M. Dye

Field Museum Institutional Advancement Team
 Ginevra^E and Ben Ranney

Field Museum Keller Science Action Center
 Kathleen Garness and
 Ian Halliday

Field Museum Membership and Annual Giving Team
 Charles L. Katzenmeyer^E

Native Truths: Our Voices, Our Stories
 Patricia Loew

Clarence Foster
 Elizabeth E. Foster

Logan Gallagher
 Michael Gallagher

Wilbur H. Gantz III^T
 Margaret Gantz

Elizabeth (Beth) Glass^T
 Linda Brown
 Geoffrey M. Glass
 Terri and Tony Lorenz
 Edward A. Lott
 Lenore L. and William S.
 Macdonald

Donna L. Greenberg
 Mimi LeClair
 Sandy Lieberman
 Elaine and Ronald Prebish

Helen Harvey
 John K. Edwards

Karl and Virginia Humbert
 Marsha and Scott Lehr
 U.S. Cellular Corporation

Charles L. Katzenmeyer^E
 Anonymous
 Chris Eisenberg
 Mary Jane Eisenhauer
 and Don Eisenhauer
 Elizabeth Gordon and
 Alexander Greenberg
 Liz and Mike Howard
 Tom E. Jacobson
 Debra Kerr and Steven
 Thompson

Lenore L. and William S.
 Macdonald
 Amy Peebles
 Chad Roberts
 Usha Subramanian and
 Deepak Raghunathan

Omar and Janelle Khesghi
 Laura Khesghi

Kelli S. Klauber
 Marianne Hawk
 M. Theresa Herlevsen and
 Marc Kahan
 Mary Jo E. Weis

Richard W. Lariviere, Ph.D.^T
 Marshall Field V^T
 Jessica^T and Steve
 Sarowitz

Ka Yee C. Lee^T
 Theo Van Den Hout

James Louderman^E
 Gretchen M. Gillis and
 Dr. David R. Cook

Gail J. and Robert B.^T Loveman
 Mr.^T and Mrs. Lewis S.
 Gruber
 Katherine T. Donaldson
 and Ryan B. Whitacre

Peggy MacNamara^E
 The Fortnightly of Chicago

Robert Marcello
 Valerie M. DaCosta

Elisabeth C. Meeker
 Elizabeth Warnock

Catherine E. Miller^E
 Beth^T and Chris Glass
 Jeanette Rodriguez^E

Stephanie Moraes
 Neise Moraes

A Nature Lover
 Susan M. Hering

Susan M. Neill^T
 Anonymous

Laura J. Panko
 Mary Finn

Eli, Grace, and Sam Perkins
 Abigail Perkins

Dr. Lesley De Souza Pitman^E
 Judith and Charles Pitman

Dr. Nigel C. Pitman^E
 Judith and Charles Pitman

Bob Poelking
 Laurie and John Poelking

Gloria Houck Ptacek
 Gloria L. McMillan

Ginevra Stirling Ranney^E
 Ken Carson and
 Sally Foster
 Elizabeth Gordon and
 Alexander Greenberg
 Aaron Rodgers

Toni Rosen
 Dolores Silverman

Dr. Kenneth Paul Rottman
 Alan Rottman and
 Gabriela Ruiz

Joan^T and Paul Rubschlager
 Charles L. Katzenmeyer^E

Vicky Sanchez^E
 Usha Subramanian and
 Deepak Raghunathan

Patricia Schnadig
 Mr. and Mrs. Eric R.
 Schnadig
 Mr. and Mrs. Donald P.
 Woulfe

Dr. Al Shatzel
 Mr. and Mrs. Robert W. Orr

Julian F. Siggers^T
 Lenore L. and William S.
 Macdonald

William F. Simpson^E
 Mr. and Mrs. Walter B.
 Watson, Jr.

Sue the T. Rex
 Anonymous
 Andrew Biederman
 Greg Pajon

Annie Sullivan^E
 Kathleen and Lawrence
 Sullivan

David M. Tolmie^T
 Tim Van Mieghem

Simon and Peter Tolzmann
 Mr. and Mrs. Matthew
 Tolzmann

Maureen Trucatel, PhD^E
 Gretchen M. Gillis and
 Dr. David R. Cook

Matthew J. von Konrat, PhD^E
 Anonymous
 Kathleen Garness and
 Ian Halliday

Alaka Wali, PhD^E
 Janet M. Hong^E

Todd J. Widhelm
 Kathleen Garness and
 Ian Halliday

David E. Willard
 Anonymous

Darnell Williams^E
 Usha Subramanian and
 Deepak Raghunathan

Loren Paul Woods
 Anonymous

IN MEMORY OF

Jean R. Armour^T
 Sandy Bergsten and
 Dave Osborne
 Eversource Energy
 Elizabeth Hudson
 Linda and George Kelly
 John L. Kramer and
 Louise C. Kramer
 Liz MacDonell and
 Lisa Domenico
 Stephanie McKean
 Gloria Reddy
 Mr. and Mrs. Robert D.
 Ridgley
 Stephena Romanoff
 Boggess and William P.
 Boggess III

Stephena C. Romanoff
Carol C. Swift
Sara Vegh and Ken
Ziejewski

Volker Assing
Anonymous

**Harry and Margaret
Axelrod**
Margaret B. and Harry
Axelrod Charitable
Trust Fund

Steve and Olga Baransky
Paula and Steve Baransky

David Bedrosky
Nannette Bedrosky

Harvey Berman
Susan W. Mittman

Ellen Smith Buchen
Richard Buchen

Patrick Casey
Colette M. Malone

Janice M. Cholke
Louise Ebel

Lily Darrell
Caitlin Darrell

Rebecca J. Davidson
Barbara Stolberg Adelman
and Steven Adelman
Joanne Malleta
Emily Reagan
Joseph Vitaterna

Mary Kay Dervin
Rhonda Bills and
Richard H. Dervin

Carl P. and Marie Flick
Geoffrey A. Flick

Anthony G. Montag, M.D.
Katherine L. Griem, MD

Patricia D. Horne
Mr. and Mrs. Patrick G.
Ryan

Phyllis Hoyland
Heather C. Behrens

Ellen F. Hyndman
Elizabeth S. Cady

Jean Carlson
Mr. and Mrs. Lester
Jacobson
Charles L. Katzenmeyer^E
Lynn and Stephen Mattson
Marie Ostrander
Greg W. Renz
Robin Schlei
Ellen Sembe
Nancy E. Simpson
Shannon Teicher
Sharon Telpner
Sharon Zurawski

**Kevin Jackson and
Jim Boone**
Akiko Shinya^E

David and Marion Jacobs
Jeffrey C. Jacobs

James Earl Jones
Cecilia Brantley

Kenneth P. Kaye
Donna and Peter Freeman
Janice Kaye

Carol Klepper
Mr. and Mrs. Samuel
Brauer

Ann Marie Kruse
Mary Radke
Pam Warren

Myles Lepert
Katie Baltensperger^E and
Matthew Fredrickson

Gordon Levy
Steve Levy and Jen Levy

**Ingeborg and Gunter
Lumbsch**
Anonymous

Joan Marzullo
Jane Garner

Withrow W. Meeker
Charles L. Katzenmeyer^E

Hugo J. Melvoin
Melvoin Foundation

Beverly M. Meyer
Joyce E. Hecht

Fredrick B. Miller
Mr. and Mrs. Paul Butera

Robert P. Miller
Karen L. Miller

Matthew H. Nitecki
The Nitecki Family
In Memory of Matthew
Nitecki

Mary and John Nordloh
Nordloh Family Foundation
Gretchen and Gregory
Tieder

David Priestman
Virginia Priestman

Gregg Robinson
Anonymous
Katy Johnson
Peg and Harlan Ludewig

Mark Roth
Sharon and Fred Benjamin

John W. Rowe^{TP}
Kathleen Abbott
Amy E. Best^T
The Robert Thomas Bobins
Foundation^T
Exelon Corporation
Marshall Field V^T
Sue Ling Gin Foundation
Trust^T

Mr.^{TD} and Mrs.^T James J.
Glasser
Judy^T and Bill Greffin
Mr. and Mrs. Patrick J.
Herbert III
Edgar D. Jannotta, Sr.
Connie^T and Dennis Keller
Jan and Richard^T Lariviere
Julie Leichtman
Dorri McWhorter
Mr.^{TPD} and Mrs. James J.
O'Connor, Sr.
Patrick G. and Shirley W.
Ryan Foundation
Helen and Richard Thomas
Jaclyn Wickershern

Michael Silverstein
Mara Tapp

Arthur B. Simon
Barbara and Gene Ridberg

Caroline Smith
Mary L. Smith^T

Venus Spencer
Latonya Brown

William T. Stanley, PhD
Kristen and Josh Jacobs
Connie^T and Dennis Keller
Rachel and William^E
Simpson

Ardelia Strickland
Dionna and Jae Cummings

Lynika S. Strozier
Matthew J. von Konrat^E and
Genea Pitts

Barbara B. Swanson
Barbara and Edwin
Swanson

Jane E. Tyner
Howard A. Tyner

Dina Vistman
Gene Nemirovsky

Nancy L. Wald
The Humanist Fund

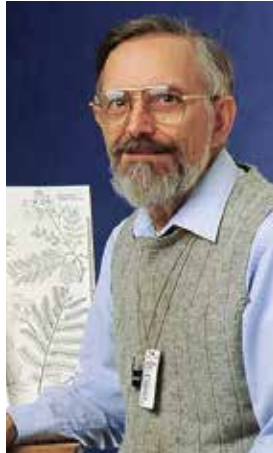
Judith Yablong
Steven M. Yablong

IN MEMORIAM



WILLARD L. "SANDY" BOYD

With sadness and fond memories, we report the passing of former Field Museum President Sandy Boyd, on December 13, 2022. Splitting his career between the Field Museum and the University of Iowa, Sandy made invaluable contributions to Museum science and longevity, taking the institution from a strong presence to a world-class home of scientific advancement.



WILLIAM C. BURGER

Curator Emeritus Bill Burger passed away on November 26, 2022. Bill contributed over 50 years to the Field, most notably through the *Flora Costaricensis*, a rigorous taxonomic record of Costa Rican plants. Bill's effervescent presence will be missed at the Field and by all those who knew him.



SUZANNE HADLEY DICKES

Sue Dickes was a member of the Museum's Women's Board since 1993, and with her spouse Byram Dickes joined the Founders' Council in 2002. Sue was a generous and enthusiastic supporter of Women's Board events and served as Co-Chair of the Museum's successful *Pompeii Ball* in 2005. She was a leader of many Chicago and Winnetka civic organizations, including the Woman's Board of the Hadley Institute, where she was also a Life Trustee.



SUZANNE S. DIXON

Sue Dixon passed away on August 19, 2022. Sue was a Chicagoland native and an engaged member of her community, including serving on the Field Museum's Women's Board. She brought her love of Chicago's natural beauty into her work furthering the Field's mission, and her spirit will be missed at the Museum.



DR. LESTER FISHER

Former Director of the Lincoln Park Zoo and friend of the Field Museum, Dr. Lester E. Fisher passed away on December 22, 2021. Dr. Fisher was best known as the Lincoln Park Zoo's first veterinarian, fostering a love of zoology in a generation of Chicagoans. He transformed the notion of what a zoo is during his 30-year tenure as director, emphasizing the importance of education and conservation while furthering animal welfare and care. Dr. Fisher's commitment to his community will be remembered.

IN MEMORIAM



ELLEN HYNDMAN

Ellen Hyndman passed away on September 11, 2022. She was a devoted member of the Field Museum community, contributing 35 years as a tour guide, docent, and member of the Women's Board. Her commitment to education was a welcome presence at the Museum. Her curiosity and generous spirit will be missed by all who knew her.



JOHN LANZENDORF

John Lanzendorf passed on May 27, 2022. He had a keen interest in paleontology and amassed an extraordinary collection of dinosaur art, some of which was displayed at the Field in 2000 to welcome SUE the *T. rex*. His vast collection was later gifted to the Indianapolis Children's Museum.



RICHARD JONES

Richard Jones passed away on March 9, 2022. He served as Chairman of the Board of Trustees at the Field Museum (1986-1988) after retiring from his position as president of Sears, Roebuck, and Company. The Board will miss his leadership and commitment to the Field's mission.



EILEEN MACKEVICH

A friend to the Field Museum for many years, Eileen Mackevich was a visionary leader of cultural and educational institutions. She led a life of service that celebrated and informed the public about history, the arts, and humanities. Among her many contributions to civic life, she served as producer and host of "Inside World News" on WBEZ-FM; co-creator of the Chicago Humanities Festival; and executive director of the Abraham Lincoln Bicentennial Commission in Washington, DC.



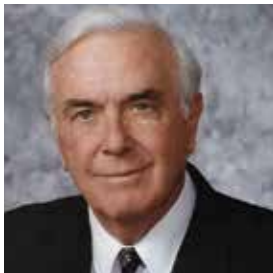
WITHROW W. MEEKER

Withrow Meeker joined the Field's Women's Board in 1975 and served as its President from 1996 to 1998. Under her leadership, the Women's Board established two programs which remain important to its mission today: Field Dreams, which supports special projects undertaken by the Museum's scientists and educators; and the Women in Science Luncheon, which supports young women on their path to science careers. Withrow's dedication to supporting early career scientists led her to establish and endow the John Caldwell Meeker Postdoctoral Fellowship at the Field Museum, in honor of her late husband.



JOSEPHINE MINOW

Josephine Minow passed away on February 17, 2022. She was a longtime advocate and contributor to Chicago's cultural institutions, and served on the Field Museum's Women's Board for more than four decades. She left her mark on her community and her generous spirit will be missed at the Field.



HAROLD BYRON SMITH, JR.

Harold Smith was a business leader, civic volunteer, and philanthropist. During his distinguished career with Illinois Tool Works (ITW), he also served on the Boards of many Chicago businesses and institutions including Northern Trust, W.W. Grainger, Rush University Medical Center, The Newberry Library, Northwestern University, and Boys & Girls Clubs of America. The Field Museum is deeply grateful for Mr. Smith's personal generosity and example of community leadership.



JOHN W. ROWE

John Rowe served as a trustee of the Field Museum for 24 years. Throughout his tenure on the Board of Trustees, John was a tireless advocate for the Field Museum. In addition to serving as Chair of the Board of Trustees from 2012 to 2015, John chaired the Government Relations, Development, and Governance Committees and was active with several other committees, including Integrative Research. John and Jeanne Rowe generously endowed two positions at the Museum: the Rowe Family Curator of Evolutionary Biology and the Rowe Family Director of the Keller Science Action Center. The Field is grateful for his passion for learning and tireless support of Field Museum science and exhibitions.

FRIENDS WE REMEMBER

The Field Museum remembers the following special friends and supporters who passed away in 2022.

Albert L. Baker
Robert L. Berner
Lynn J. Besser
David R. Bibbs
Richard T. Brannegan
Sandra K. Crown
Rebecca J. Davidson
Diana L. Deboy
Gary R. Dorn
Erl Dornal
Janet Etshokin
Gilda M. Greenberg
Marguerite D. Hark
J. Ira Harris
John J. Kinsella
Jacqualine A. McDonough
Sarah R. Packard
Michael Simpson
Elizabeth K. Tweed
Jane E. Tyner

REMEMBERING W. ROCKWELL WIRTZ



(Right) Past Board Chair Rocky Wirtz presenting the Stanley Cup at the Field Museum, 2015.

The Field Museum community mourns the passing of W. Rockwell (Rocky) Wirtz, President of the Wirtz Corporation, Chairman of the Chicago Blackhawks, and Field Museum Board Chair.

Rocky's transformational impact on the Blackhawks is well-known; his time with the Field Museum was no less influential. He joined the Museum as a Trustee in 2009. After chairing the Marketing Committee, he was unanimously elected to serve as Board Chair in March 2021. Rocky deftly steered the Board during the unprecedented challenges of the COVID-19 pandemic and provided his characteristic thoughtful, insightful counsel at a time when it was greatly needed.

As a Campaign Co-Chair for the \$316 million *Because Earth Campaign*, Rocky helped to secure funds that will sustain the Field for future generations. He and his wife Marilyn also steadfastly and generously supported the Museum's outreach programs and Women's Board initiatives, especially as Premier Host Committee members for the annual gala. They are Field Museum Benefactors—among the most generous donors in the Museum's history.

Rocky embodied what it means to be a Chicagoan: he was generous in every sense, tremendously proud of our city, admirably civic-minded, and warmly welcoming to all.



PUBLISHER

Charles L. Katzenmeyer

EXECUTIVE EDITOR

Chandler L. Cohron

CONTRIBUTORS

Mark Alvey

John Bates, PhD

Katie Baltensperger

Aimee Davis

Abigail Derby Lewis

Noé de la Sancha

Trish Farrell

Jackie Feng

Kate Golembiewski

Matt Harmon

Maggie Holcomb

Janet Hong

Darren Incorvaia

Jenna Lieblich

Kyle Malone

Catherine Miller

Steph Moraes

Jingmai O'Connor, PhD

Nigel Pitman, PhD

Richard Ree, PhD

Akiko Shinya

Ryan Schuessler

Tom Skwerski

Colleen Spatz

Maria Valdes, PhD

Janet Voight, PhD

Emily Wagner

Rachel Wegner

DESIGNER

Bark Design, Chicago

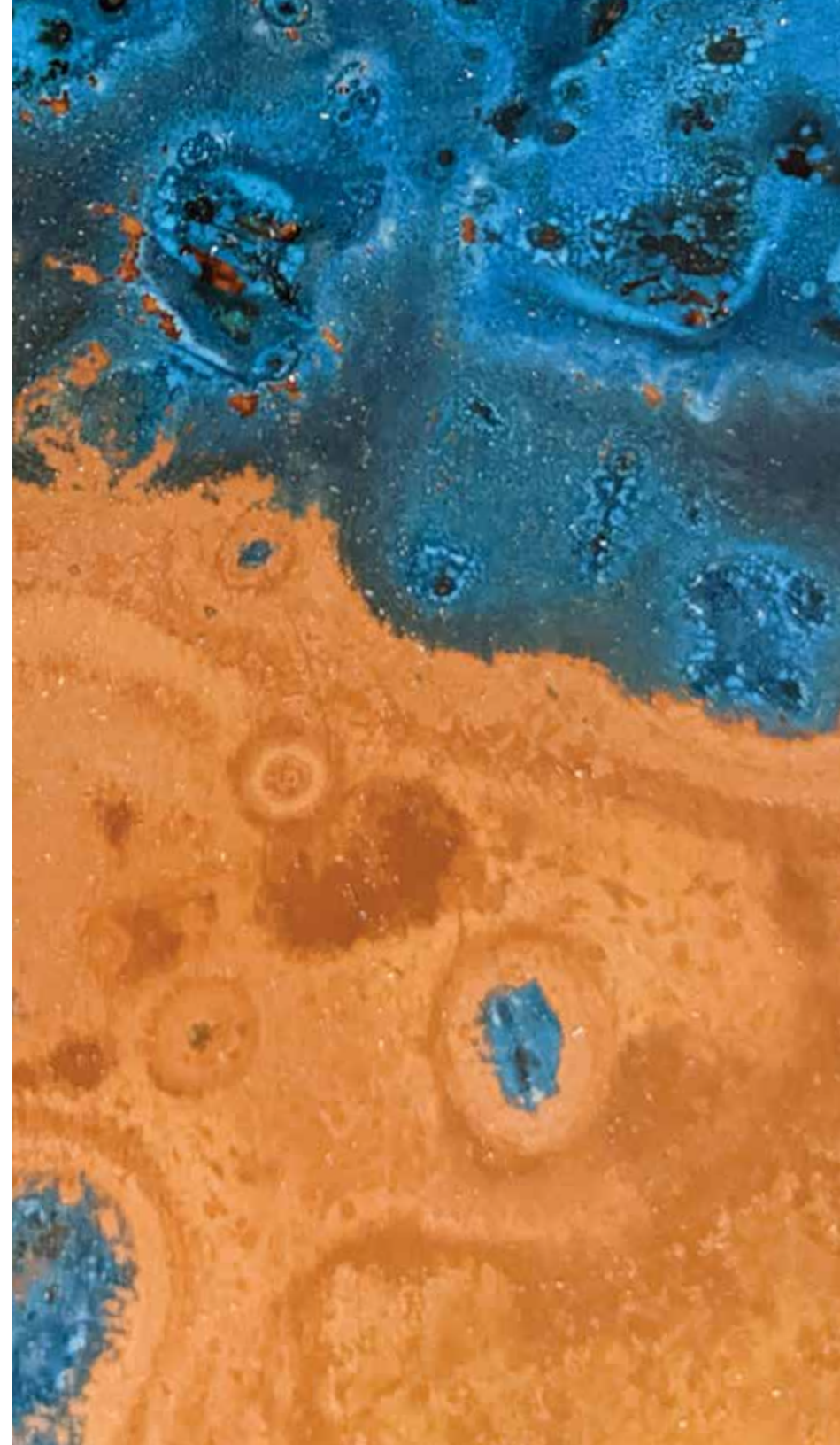
PRINTER

The Fox Company,
Milwaukee, WI

PHOTO CREDITS

Cover: Copper - Field Museum, Birch bark - Field Museum. **Discovery:** Penguins - John Bates, Frog - Germán Chávez, Extinctus - Riley Fortier, Seafloor to Seashore - Peggy Macnamara, Jeholonia illustration - Zhixin Han and Yifan Wang, Meteorites - Field Museum, Rat - Noé de la Sancha, Michelle Brownless - Field Museum, Rachunliu Kamei - Rachunliu Kamei, Michael Donovan - Michael Donovan, Kimberly Hansen - Kimberly Hansen, Sean Keogh - Sean Keogh, Bruno de Medeiros - Bruno de Medeiros, Fabianny Herrera - Fabianny Herrera, Mountain flowers - Rick Ree, When Dinosaurs Conquered the Skies - Jingmai O'Connor and Maria Brzozowska, Bone sample - Field Museum, Dig site - Akiko Shinya. **Impact:** Bustle - Field Museum, Child dancer - Simon M. Watson, Headdress repair - Field Museum, Monarch - Field Museum, Roots and Routes - Field Museum, Field Guides - Field Museum, Calumet Voices - Field Museum, PlayLab - Kyle Flubacker Photography, Lynika Strozier - Kyle Flubacker, Native North America Hall - Kyle Flubacker Photography, Learning Collection - Field Museum, Dozin with the Dinos - Kyle Flubacker Photography, Death - Field Museum, CPS Storytime - Field Museum, Mosasaurus - Natural History Museum, London. **Honor Roll:** Because Earth Celebration - Kyle Flubacker Photography, Paul and Joan Rubschlager - Kyle Flubacker Photography, Wild Color - Kyle Flubacker Photography, Parker/Gentry Awardee - Cream Center Conservation, Gala - Kyle Flubacker Photography, Evolve - Kyle Flubacker Photography, Sara Ruane - Sara Ruane, WIS Luncheon - Field Museum, Giving Day - Maria Valdes, Sandy Boyd - Field Museum.

To view donors to the collections, Field Museum research associates, and Field Museum volunteers, visit the digital edition of this report at fieldmuseum.org/about/annual-reports.





THANK YOU!

1400 S. DuSable Lake Shore Drive, Chicago, IL 60605
fieldmuseum.org