

## Pepeha (For Non-Māori)

Learn about pepeha (a Māori form of introduction), and then write your own!

### Background

In Aotearoa (New Zealand), the Māori people are known as tangata whenua (TAHN-gah-tah FEH-noo-ah) or “people of the land.”

When meeting someone new, a Māori person might begin with a pepeha (peh-PAY-hah)—or formula to introduce themselves from a Māori perspective. To the Māori:

1. Pepeha are about **connections**. These connections are more important than identity as an individual.
2. The pepeha does NOT start with one’s name but by stating something like “This is my mountain. This is my river. etc.” as well as community and family ties.
3. It is where they are from and to whom they are connected that tell far more about a person than their name.

Source: [Pepeha for Non-Māori](#)

To learn more about pepeha, watch the following videos:



How to Pepeha!

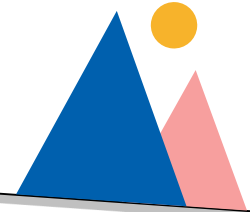


How to say your pepeha: Tikanga explained

## GUESS WHAT?



Even if you’re not Māori, you can create your own version to show where you’re from and what’s important to you. It’s a fun way to share your identity and learn to respect the stories of others, too!



## Pepeha (For Non-Māori)

Learn about pepeha (a Māori form of introduction), and then write your own!

### NOTE:



If you are not Māori or another Indigenous person, you will not have quite the same connection to the land ("This is my mountain," etc.). Instead, you might use the format below as a non-Māori person.

Te reo Māori (The Māori Language)	English
Tēnā koutou katoa.	Greetings, hello to you all (3+ people).
Ko Ingarangi,	England/English (Replace with wherever you can trace your ancestry.)
te whakapaparanga mai,	Is my ancestry,
Engari,	but, however,
Ko . . . . . te whenua tupu.	(placename) is where I grew up.
Ko . . . . . te kāinga.	(place) is my home (what you really consider home).
Nō . . . . . au.	I'm from (place). (No need to repeat if it is the same.)
Kei . . . . . au e noho ana.	I am living in (place).
He . . . . . au i . . . . .	I am a (job/role title) at (name of school/work/organization)
Ko . . . . . au.	I am (your name).
Tēnā tātou katoa.	Greetings to one and all.

Source: [Pepeha for Non-Māori](#)

## Pepeha (For Non-Māori)

Learn about pepeha (a Māori form of introduction), and then write your own!

### Now create your own pepeha!

\_\_\_\_\_ (Greeting).

\_\_\_\_\_ is my ancestry.

But \_\_\_\_\_ is where I grew up.

\_\_\_\_\_ is my home.

I'm from \_\_\_\_\_.

I am living in \_\_\_\_\_.

I am \_\_\_\_\_ (student, basketball player, etc.)

at \_\_\_\_\_ (name of school, organization, etc.).

I am \_\_\_\_\_ (name).

\_\_\_\_\_ (Greeting).

## DISCUSSION



Share your pepeha with your classmates.

Do you have any similarities?