

SUE: The *T. rex* Experience



FIELD
MUSEUM

Exhibition Overview

Encounter SUE—the largest, most complete, best-preserved *Tyrannosaurus rex* ever found—and the world SUE lived in as never seen before.

Featuring a fully articulated SUE cast with gastralia (“belly ribs”), a one-of-a-kind narrated show, and realistic computer animated scenes, *SUE: The T. rex Experience* is a journey through Hell Creek, SUE’s home and one of the most well-documented ecosystems from the age of dinosaurs. Touchable fossil replicas, scent stations, and a naturalistic soundscape create an immersive, multi-sensory experience.



Fossil Discovery

Investigate how SUE was transformed into a fossil after death and learn about SUE’s discovery millions of years later. Follow the process of extracting the bones and their eventual preparation and display by the Field Museum, and put yourself in the boots of paleontologists by trekking across a life-sized quarry map.

Predator and Prey

The exhibition’s centerpiece is a cast of SUE’s 40.5-foot-long skeleton, paired for the first time with a complete replica skeleton of *T. rex*’s nemesis, *Triceratops*. Touchables and interactives provide opportunities for exploration and hands-on learning.

SUE’s World

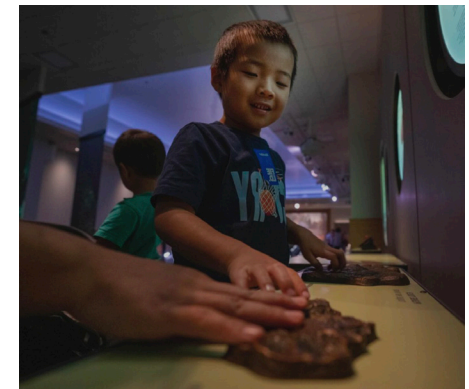
Experience SUE’s environment through realistic animated scenes of Cretaceous South Dakota. Then, see fossils of dinosaurs, mammals, turtles, plants, and more that informed this detailed reconstruction. Feel the textures and discover the smells and sounds of this ancient world.

Scientific Research

Understand the importance of SUE as a research specimen. Get up close with a replica of SUE’s unrestored skull, just as it looked when it came out of the ground. Learn what scientists have discovered from studying the most complete *T. rex* ever found, and test your knowledge with a digital quiz—are you a *T. rex* expert?

SUE Show

Experience the colorful narrated program that illuminates SUE’s skeleton to reveal battle scars, mortal ailments, and what scientists have learned about *T. rex* from this remarkable specimen.



Exhibition Specifications

Size

5,000 ft² (465 m²)

Ceiling height

15 ft (4.57 m)

Security

Exhibition requires a limited-access, lockable space with security staff during public hours

Shipping

One-way, inbound, paid by host venue

Languages

All text in English and Spanish; language may be converted by host venues



SUE: The T. rex Experience was organized by the Field Museum and is part of the Griffin Dinosaur Experience, made possible by generous support from Kenneth C. Griffin.

Rental fee

Please inquire

Features

- Fully articulated cast skeleton of SUE with gastralia (“belly ribs”)
- Full-scale replications and touchable models
- Mechanical and digital interactives
- Large media elements and videos, including a one-of-a-kind SUE Show
- Gallery-wide soundscape
- Projectors, speakers, electronics, cabling, and AV technical support

Contact

travelingexh@fieldmuseum.org

312.665.7119

www.fieldmuseum.org/traveling-exhibitions

Cover and lower left interior:
© Denver Museum of Nature & Science
Other images: © Field Museum