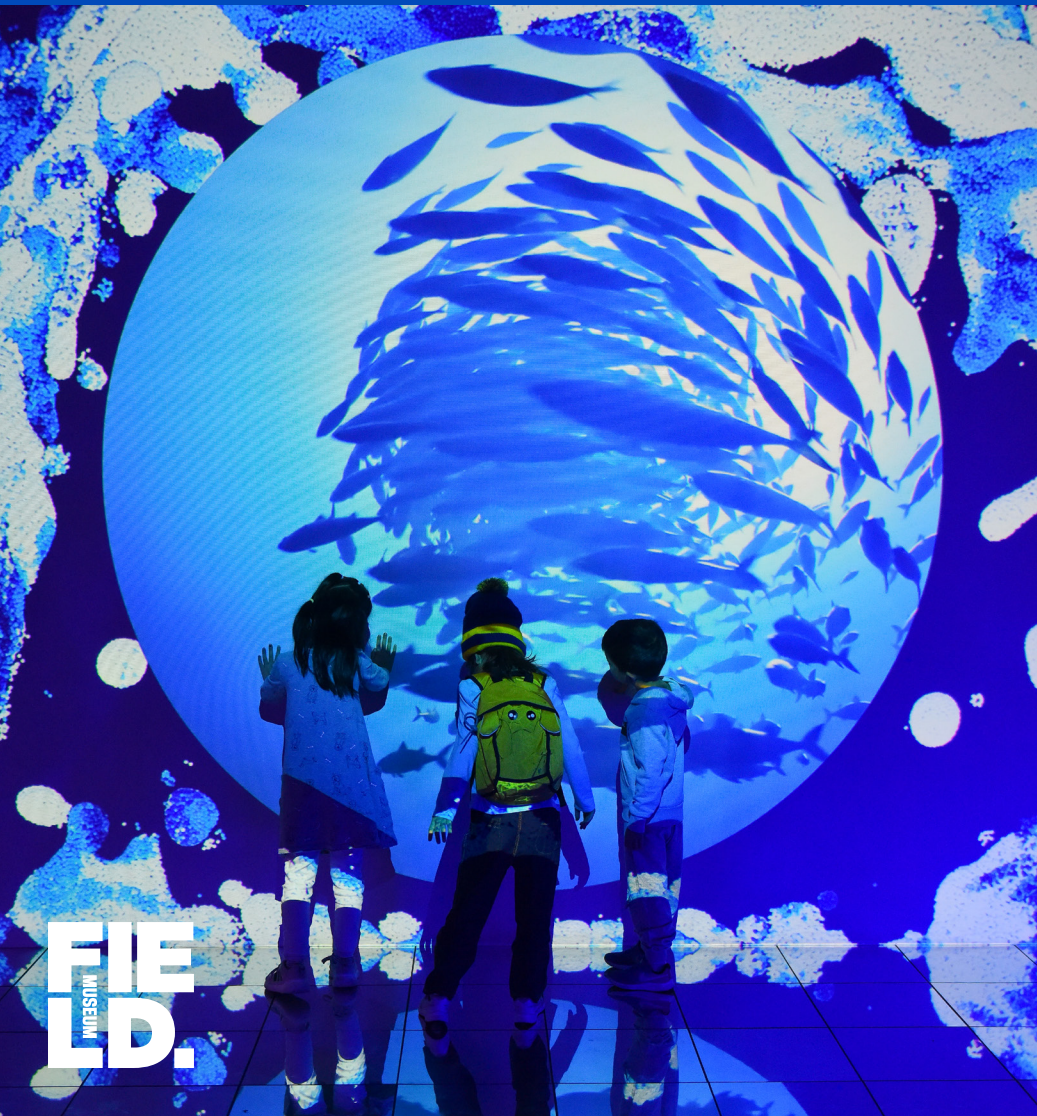


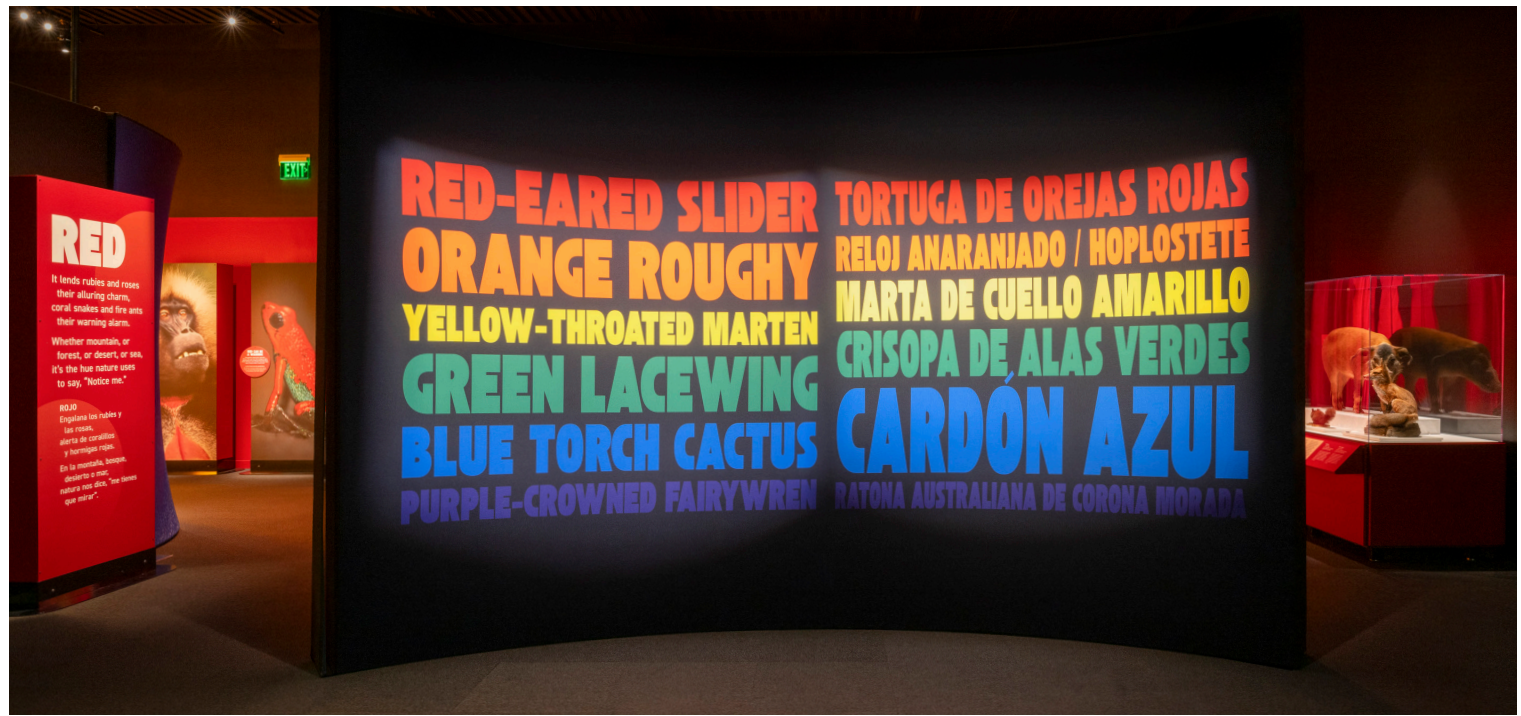
Wild Color



FIELD.
MUSEUM

Exhibition Overview

Delve into the color spectrum like never before as you make your way through immersive rooms, each representing a color of the rainbow. Color-saturated spaces awaken the senses with vibrant specimens, photo-worthy displays, lush soundscapes, and appealing ambient scents. Marvel at ways creatures use natural color to protect themselves, attract mates, and achieve inspiring beauty.



Red and Orange

Begin your journey through the color spectrum among the rich, luxurious hues of rubies and garnets. See how nature uses vivid red in the warning colors of king snakes and velvet ants—and also how red attracts through the shades of fruits and flowers. A cornucopia of bright orange shells and birds follows.

Yellow and Green

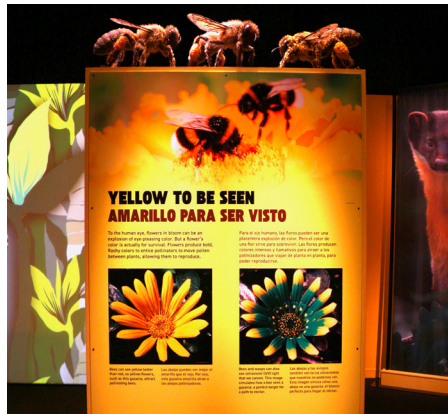
Among yellow dandelions, bees, field mice, and butterflies, go ahead and “try on” butterfly wings to see how you look. Examine how melanin naturally pigments animal fur patterns and human skin tones. This sunny space gives way to a forest of green leaves and the creatures that camouflage themselves among them.

Ultraviolet

Beyond the range of human sight, there’s a violet hue of greater energy: ultraviolet. Explore and compare the dramatic color shifts of animals, plants, and minerals under UV lights.

Wildly Colorful

The finale of specimens and media brings together the entire rainbow to answer some big questions: Why is nature so colorful at times? How can plants and animals change color? How do we make colors from nature? And how can we connect to color in the natural world?



Blue and Purple

A centerpiece of the exhibition is the blue multimedia space, where the deep blue seas and skies surround you. Investigate how birds, butterflies, and sea creatures create blue with microscopic light-bending textures, then marvel at vividly purple animals and plants.

Black and White

Experience the extremes of dark and light—from birds with feathers so black they absorb nearly all light, to the reflective white underside of a silver fern. Learn that scientists cannot agree on why zebras have stripes!



Exhibition Specifications

Size

5,000 ft² (465 m²)

Ceiling height

12 ft (3.66 m)

Security

Exhibition requires a limited-access, lockable space with security staff during public hours

Shipping

One-way, inbound, paid by host venue

Languages

All text in English and Spanish; language may be converted by host venues



Rental fee

Please inquire

Features

- 36 cases with 200+ Zoology, Botany, and Geology specimens
- 19 atmospheric murals
- 2 ambient scent stations
- 5 tactile interactive elements
- 3 videos and 8 soundscapes
- 4+ photo ops
- Projectors, speakers, electronics, cabling, and AV technical support

IP Starter Kit now available

Create your own *Wild Color* exhibition using the Field Museum's graphics, photo murals, immersive media, text, and equipment specifications. Digital delivery.

Contact

travelingexh@fieldmuseum.org

312.665.7119

www.fieldmuseum.org/traveling-exhibitions