

MORE BEER



Low alcohol

- Bloesem Bluf - Blond 0.5% 5⁷⁵
 Mango Mañana - NEIPA 0.3% 5⁷⁵

Glutenfree

- Glutenfree beer 5⁹⁵

Pils

- Heineken - Vaasje (draught beer glass) 3⁹⁵
 Heineken - Pitcher 22⁵⁰
 Heineken 0.0% - Bottle 3⁹⁵

SNACKS

Our deep fried snacks are supplied by the Haagsche Croquetterij

- | | | | |
|--|------------------------------------|--|----------------------|
| Twister Fries ^{Tip!}
with sriracha mayo | 7 ⁵⁰ | Vlammetjes
(vg) - with chili sauce
6 or 12 pieces | 8 14 ⁵⁰ |
| Bitterballen
beef or oyster mushroom (vg)
- with mustard
6 or 12 pieces | 8 ⁵⁰ 15 ⁵⁰ | Spring rolls
(vg) - with chili sauce
6 or 12 pieces | 8 14 ⁵⁰ |
| Truffle croquettes
parsnip with truffle (vg)
- with mayonaise
4 or 8 pieces | 8 14 ⁵⁰ | Snackmix (veggie option)
bitterballen, cheese sticks,
spring rolls and vlammetjes
12 pieces | 15 ⁵⁰ |
| Cheese sticks
(v) with chili sauce
6 or 12 pieces | 8 14 ⁵⁰ | Nutmix from Gotjé
mix of pecan, cashew,
macadamia, wasabi, pinda | 5 |

MORE HUNGRY?

Between 5:00 PM and 10:00 PM, you can order pizza from our neighbors at Pomodoro! They make the pizzas fresh and bring them directly to your table. Scan the QR code to place your order.



Wifi: Gast_gebrouwen_door_vrouwen_bar
 Password: Welovebloesemblond



Online?
Say hi!



follow us: @gebrouwendoorvrouwen_bar
 @gebrouwendoorvrouwen | www.gebrouwendoorvrouwen.nl

WINES



- White - Stemmari, Grillo 6⁵⁰ | 29⁵⁰
 A dry white wine with hints of white peach and pear
- Red - Stemmari, Nero d'Avola 6⁵⁰ | 29⁵⁰
 A smooth red wine with notes of ripe red fruit
- Rosé - La Colombette, Grenache 6⁷⁵ | 31⁵⁰
 An easy rosé with aromas of raspberry and strawberry

SPIRITS

- Salmari - A dark, intense salmiak liqueur 4⁷⁵
- Jajem - Young Dutch Jenever 5
- Olmecca Blanco - Tequila 5⁷⁵
- De Lokaliteit - Choice of Vodka, Rum and Gin 5⁷⁵
- Aperol Spritz - For the warm sunny days 10⁷⁵

COLD

- Sodas from 3⁵⁰
- FEVER-TREE GINGER BEER, GINGER ALE, FEVER-TREE TONIC, APPELSAP, LIPTON ICE TEA GREEN, COCA COLA, COCA COLA ZERO
- Roze Bunker lemonade 4⁵⁰
 - CITRUS BASILICUM
 - PEAR MINT
 - ELDERFLOWE
 served with still or sparkling water
- Chaudfontaine - Still or sparkling 33cl 3
- Chaudfontaine - Sparkling 75cl 6⁵⁰

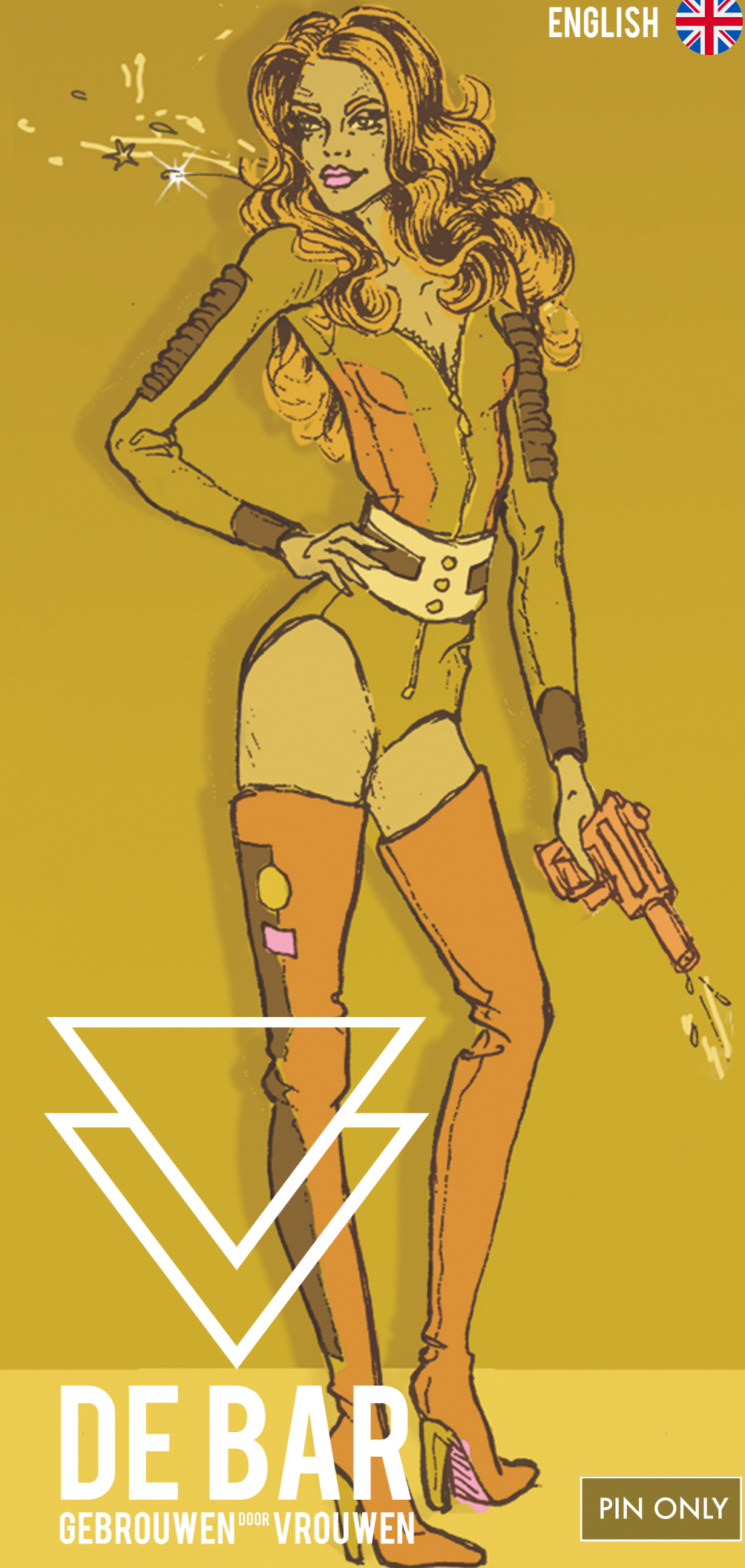
HOT

- Selection of coffees from 3⁵⁰
- Selection of teas 3²⁵
- Fresh tea - Mint or ginger with lemon 3⁷⁵

GEBROUWEN DOOR VROUWEN merchandise and presents

- | | | | |
|---------------------------------------|------------------|---|-----------------|
| T-shirt unisex | 35 | Bloesem Blond bottle 75cl | 8 ⁹⁰ |
| Sweater unisex | 45 | Glass 25cl with logo | 3 |
| Beer can gift set
- 4 cans of beer | 12 ⁵⁰ | Gift set with glass
- 4 cans of bier with a glas | 15 |

ENGLISH 



DE BAR
 GEBROUWEN DOOR VROUWEN

PIN ONLY

BEERS ON TAP

GIN WIT



A creamy wheat beer with gin botanicals: juniper berry, coriander and orange peel. Perfect for any moment of the day, anytime and anywhere.

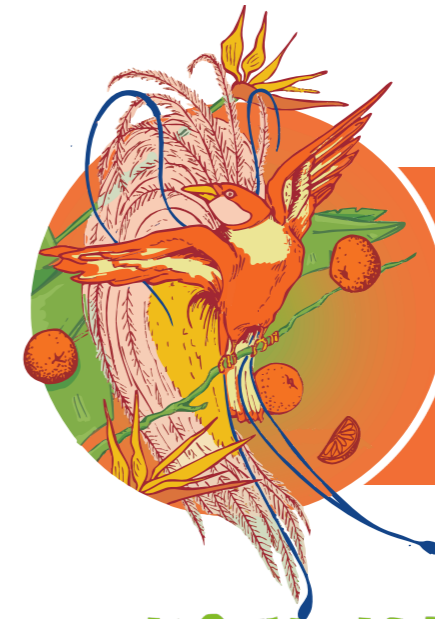
glass 5⁵⁰ | big 9⁷⁵ | pitcher 32⁵⁰
creamy | smooth | gin botanicals | 6%



Bloesem Blond

Our bestseller! Elderflower adds a floral aroma and gives the beer a fresh finish. The perfect beer to enjoy outside in the sunshine.

glass 5⁵⁰ | big 9⁷⁵ | pitcher 32⁵⁰
blond | floral | elderflower | 6.2%



Sinas Cerveza

Sinas Cerveza is an American wheat beer with a southern twist. Brewed with wheat malt and orange peel. Pure sunshine in a glass!

glass 5⁵⁰ | big 9⁷⁵ | pitcher 32⁵⁰
orange | light | fruity | 4.8%

Paloma Paradise

Brewed for Paloma, a Spanish restaurant in Utrecht. A fresh and light beer brewed with grapefruit and sea salt. The right beer to start the evening with!

glass 5⁷⁵ | big 8⁷⁵ | pitcher 32⁵⁰
light | grapefruit | salt | 4%



Wildflower Blond

Brewed for restaurant Ruby Rose in Utrecht. A blond beer with floral herbs such as rose hips and rose petals.

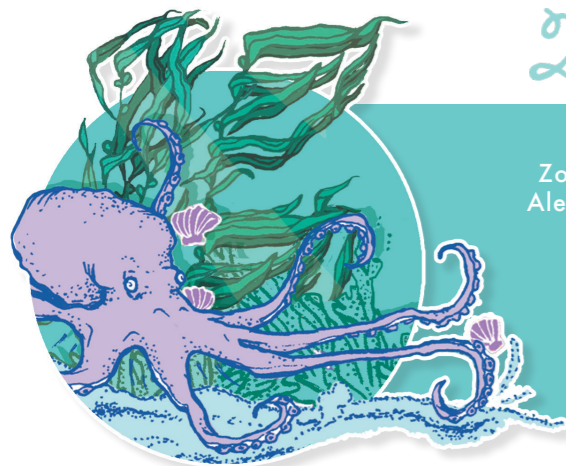
glass 5⁵⁰ | big 9⁷⁵ | pitcher 32⁵⁰
blond | roses | full | smooth | 6%



MISTY MANGO

A hazy IPA with fruity hops that enrich the beer with mango, peach and pineapple notes. So amazing you drink it all year round!

glass 6⁷⁵ | big 9⁷⁵ | pitcher 32⁵⁰
neipa | tropical | mango | 6%



Zonnig Zeewit

Sun, sea, beach and beer! Zonnig Zeewit is a light Wheat Ale. Brewed with seaweed from the North Sea.

glass 5⁷⁵ | big 8⁷⁵ | pitcher 32⁵⁰
light | seaweed | salty | 3,8%



Tricky Tripel

Tricky Tripel is one of the first beers that we brewed at home. This beer is so full of malt and taste that it gets 'tricky' sometimes.

glass 6⁷⁵ | big 9⁷⁵ | pitcher 32⁵⁰
smooth | orange | tripel | 7.8%



Pink Pale Ale

This refreshing pale ale is brewed with tropical hibiscus and sweet orange. The hibiscus gives the beer a soft pink hue and a crisp finish.

glass 5⁷⁵ | big 8⁷⁵ | pitcher 32⁵⁰
fresh | hibiscus | pink | 4%

GEMBER GOUD

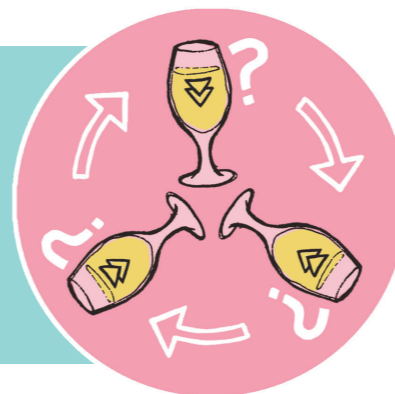
Gember Goud is a light Pale Ale with a spicy ginger twist. This is without doubt an intense beer with a sparkling, fresh taste.

glas 5⁵⁰ | big 9⁷⁵ | pitcher 32⁵⁰
spicy | ginger | intense | 4.6%



ROTATING TAP

Ask our team what's currently on tap.



BEER FLIGHT

Can't choose? Try our tasting tray and discover the world of Gebrouwen door Vrouwen. Find your favourite!

5 small glasses | 18⁵⁰

