

Sero-Test Plus



Clinical Applications

- Supports Healthy Testosterone Levels†
- Supports Healthy Libido and Performance†
- Supports Overall Vitality†
- Optimizes Physical Strength and Endurance†
- Supports Cognition†

Sero-Test Plus features two safe, clinically-tested, standardized, and patented ingredients designed to support vitality and general physical and mental well-being in men and women. Numerous studies have demonstrated that PrimaVie® shilajit and LJ100® Eurycoma longifolia support healthy androgen biosynthesis, which includes modulating the influence of sex hormone-binding globulin.†

All Serotonin Nutraceuticals LLC. Formulas Meet or Exceed cGMP Quality Standards

Discussion

Five percent of males aged 40-50 years and as many as 70% of males over 70 years are confronted with “hypogonadism.” Low testosterone levels have been associated with a decline in libido, erectile dysfunction, lack of energy, less physical strength and endurance, loss of height, decreased enjoyment in life, low mood, feeling grumpy, falling asleep after dinner, and decreased work performance.^[1,2] Some studies suggest that low testosterone may also contribute to cognitive decline.^[3,4]

Although sometimes thought of as a male hormone, a review study of the clinical significance of testosterone has shown its positive association with sexual function and a healthy libido in women.^[5]

Most circulating testosterone is bound to sex hormone-binding globulin (SHBG). Only the lesser amount of testosterone not bound to SHBG is considered bioavailable.^[6] Sero-Test Plus features a blend of ingredients designed to support healthy androgen biosynthesis, which includes modulating the influence of SHBG.†

Shilajit is a naturally occurring, mineral-rich phytocomplex with many bioactive components, including fulvic acids. It comprises rock humus, rock minerals, and organic substances that have been compressed by layers of rock mixed with marine organisms and microbial metabolites.^[7] Shilajit has a rich history of use in Indian ayurvedic and siddha medicine as a health and wellness optimizer. It is known as a *rasayana* because of its rejuvenating qualities, which include heightening physical performance and relieving fatigue.^[8]

According to an article in the *American Journal of Clinical Nutrition*, weightlifters use shilajit to promote better strength, recovery, and muscular hypertrophy and also to combat physical stress, but human data on these uses are lacking.^[9]

Animal and human studies have documented the safety of shilajit. The oral median lethal dose (LD50) is > 200 grams, and chronic use at doses of 0.2–1.0 g/kg body weight appear to be safe.^[7]

Upwards of 50 studies on shilajit suggest that it has a positive effect on testosterone levels and adaptogenic, antioxidant, cytokine-balancing, immunomodulatory, and antidiabetic activities.^[10] Fulvic acid, the main bioactive component in shilajit, blocks tau proteins self-aggregation suggesting it may have a role in supporting cognition.^[11]

PrimaVie® shilajit at a dose of 250 mg/capsule consumed twice daily after major meals for 90 days was evaluated in 75 healthy male volunteers aged 45-55 for its testosterone secretion efficacy and its stimulation effects. This double-blind placebo-controlled study revealed that PrimaVie shilajit, when compared to placebo, significantly ($P < 0.05$) increased total testosterone, free testosterone, and dehydroepiandrosterone (DHEA). The levels of testosterone synthesis-supportive gonadotropic hormones were well-maintained.^[7]

Another study further demonstrated the safety and also the spermatogenic nature of shilajit. Infertile males ($n = 35$) took 100 mg of PrimaVie shilajit twice daily after major meals for 90 days. At completion, 28 of the subjects had significant ($P < 0.001$) improvement compared to baseline values of factors related to fertility. Furthermore, at the study's completion, the semen's content of malondialdehyde (MDA), a marker for oxidative stress, was reduced. High-performance liquid chromatography (HPLC) revealed that the semen had constituents of PrimaVie shilajit. Compared to baseline, serum levels of testosterone rose 23.5% ($P < 0.001$) and follicle-stimulating hormone (FSH) rose 9.4% ($P < 0.05$). Liver and kidney profiles were unchanged.^[12]

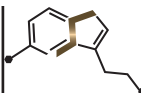
In addition, the safe use of PrimaVie shilajit in either gender was demonstrated in an experimental study on skeletal muscle adaptation in human subjects ($n = 16$), ages 21-70 years. Participants were given 250 mg of PrimaVie with no adverse effects during the 12-week study period.^[13]

Eurycoma longifolia root (Malaysian ginseng) is considered a tonic and an adaptogen for supporting healthy libido, energy, sports performance, and weight management by promoting healthy testosterone levels and freeing testosterone from SHBG. Eurypeptides activate the CYP-17 enzyme, which plays a key role in production of DHEA, progesterone, testosterone, and pheromone via the metabolism of pregnenolone. A systemic review and meta-analysis of randomized controlled studies ($n = 139$) concluded that the herbal extract “may have clinical effect on erectile function. However, more efficacy trials are warranted to further support current evidence.”^[14]

LJ100® *Eurycoma longifolia* is a root extract whose safety and efficacy is backed by animal and at least 12 human clinical studies. Compound isolation, a patented water-extraction process, and technologically advanced manufacturing methods ensure the purity of this ingredient and allow for the capture of the potent, biologically active eurypeptides.†

Continued on next page...

†These statements have not been evaluated by the Food and Drug Administration. This product is not intended to diagnose, treat, cure, or prevent any disease.



orders@serotoninutraceuticals.com | www.SerotoninNutraceuticals.com

SEROTONIN NUTRACEUTICALS LLC.
7790 Wintergarden Vineland Suite 100
Windermere FL 34786

Sero-Test Plus



Supplement Facts

Serving Size: 2 Capsules
Servings Per Container: 30

	Amount Per Serving	%Daily Value
Shilajit (10.3% Dibenzo- α pyrones (DBPs) & Dibenzo- α pyrone Chromoproteins (DCPs)) (50% fulvic acids with DBP Core Nucleus) ^{S1}	500 mg	**
<i>Eurycoma longifolia</i> Extract (22% bioactive eurypeptides, 40% glyco saponins)(root) ^{S2}	200 mg	**

** Daily Value not established.

Other Ingredients: Capsule (hypromellose and water), microcrystalline cellulose, dicalcium phosphate dihydrate, ascorbyl palmitate, and silica.

S1. PrimaVie® is a registered trademark of Natreon, Inc. and is protected under US patents 6,969,612 and 6,440,712.

S2. LJ100® is a registered trademark of HP Ingredients. Bioactive Fraction of *Eurycoma Longifolia* is protected by Worldwide patent WO/02/17946 A1 and US patent 7,132,117.

A randomized, placebo-controlled, two-month study (n = 20) focused on the outcomes of LJ100 on various parameters in male volunteers aged 38-58 who had varied health conditions and consumed either a placebo or 200, 400, or 600 mg of LJ100. The herb-consuming volunteers showed improvement in sexual desire and performance. Also, testosterone and DHEA levels were high-normal when compared to baseline; HDL cholesterol improved; those who had type-2 diabetes showed improvement in blood glucose levels; and insulin-like growth factors (IGF-1) were high-normal (lower levels of IGF-1 are correlated with higher body fat). Compared to those on placebo, the majority of the volunteers on LJ100 had high-normal levels of thyroxine suggesting higher metabolism. Blood and lipid panels and liver and renal function profiles, electrolytes, and various tumor markers including prostate-specific antigen (PSA) were within normal range.^{†15]}

The benefits of LJ100 are not limited to males or particular age groups. Two studies, one in middle-aged and one in senior males and females, demonstrated the herb's promotion of healthy fitness, vitality, and vigor concomitant with an increase in free testosterone and a decline in SHBG.^{†16,17]}

In summary, it appears that the combination of these two herbs supports healthy testosterone levels in men and women which, in turn, supports vitality, virility, and vigor.[†]

Directions

Take two capsules in the morning, or as directed by your healthcare professional.

Consult your healthcare professional prior to use. Individuals taking medication should discuss potential interactions with their healthcare professional. Do not use if tamper seal is damaged.

References

- Korenman SG, Morley JE, Mooradian AD, et al. Secondary hypogonadism in older men: its relation to impotence. *J Clin Endocrinol Metab.* 1990 Oct;71(4):963-969. [PMID: 2205629]
- Vermeulen A, Kaufman JM. Diagnosis of Hypogonadism in the aging male. *Aging Male.* 2002 Sept;5(3):170-6. [PMID: 12471777]
- Beauchet O. Testosterone and cognitive function: current clinical evidence of a relationship. *Eur J Endocrinol.* 2006 Dec;155(6):773-81. [PMID: 17132744]
- Wahjoepramono EJ, Asih PR, Aniwiyanti V, et al. The effects of testosterone supplementation on cognitive functioning in older men. *CNS Neurol Disord Drug Targets.* 2016;15(3):337-43. [PMID: 26553159]
- Davis SR, Wahlin-Jacobsen S. Testosterone in women—the clinical significance. *Lancet Diabetes Endocrinol.* 2015 Dec;3(12):980-92. [PMID: 26358173]
- Mayo Clinic. Test ID: TTFB. Testosterone, Total, Bioavailable, and Free, Serum. <http://www.mayomedicallaboratories.com/test-catalog/Clinical+and+Interpretive/83686>. Accessed April 20, 2017.
- Pandit S, Biswas S, Jana S, et al. Clinical evaluation of purified Shilajit on testosterone levels in healthy volunteers. *Andrologia.* 2015 Jun;48(5):570-5. [PMID: 26395129]
- Surapaneni DK, Adapa SR, Preeti K, et al. Shilajit attenuates behavioral symptoms of chronic fatigue syndrome by modulating the hypothalamic-pituitary-adrenal axis and mitochondrial bioenergetics in rats. *J Ethnopharmacol.* 2012 Aug 30;143(1):91-9. [PMID: 22771318]
- Bucci LR. Selected herbals and human exercise performance. *Am J Clin Nutr.* 2000 Aug;72(2 Suppl):624S-36S. [PMID: 10919969]
- Stohs SJ. Safety and efficacy of shilajit (mumie, moomiyo). *Phytother Res.* 2014 Apr;28(4):475-9. [PMID: 23733436]
- Carrasco-Gallardo C, Guzmán L, Maccioni RB. Shilajit: a natural phytocomplex with potential procognitive activity. *Int J Alzheimers Dis.* 2012;2012:674142. [PMID: 22482077]
- Biswas TK, Pandit S, Mondal S, et al. Clinical evaluation of spermatogenic activity of processed shilajit in oligospermia. *Andrologia.* 2010 Feb;42(1):48-56. [PMID: 20078516]
- Das A, Datta S, Rhea B, et al. The human skeletal muscle transcriptome in response to oral shilajit supplementation. *J Med Food.* 2016 Jul;19(7):701-9. [PMID: 27414521]
- Kotirum S, Ismail SB, Chaiyakunapruk N. Efficacy of tongkat ali (*Eurycoma longifolia*) on erectile function improvement: systematic review and meta-analysis of randomized controlled trials. *Complement Ther Med.* 2015 Oct;23(5):693-8. [PMID: 26365449]
- Tambi MI, Kadir AB. LJ100, a potent adaptogen, maintains healthy aging in men. *Int J Androl.* 2005;28(suppl 1): 25-44.
- Sarina MY. Effects of strength training and LJ100 supplementation on strength and muscle size in middle-aged women. Presented at: 4th Asia-Pacific Conference on Exercise and Sport Science & 8th International Sports Science Conference; July 15-17, 2009; Malaysia.
- Henkel RR, Wang R, Bassett SH, et al. Tongkat ali as a potential herbal supplement for physically active male and female seniors—a pilot study. *Phytother Res.* 2014 Apr;28(4):544-550. [PMID: 23754792]

Formulated To Exclude

Wheat, gluten, corn, yeast, soy, animal and dairy products, fish, shellfish, peanuts, tree nuts, egg, ingredients derived from genetically modified organisms (GMOs), artificial colors, artificial sweeteners, and artificial preservatives.

†These statements have not been evaluated by the Food and Drug Administration.
This product is not intended to diagnose, treat, cure, or prevent any disease.