



PORT SZCZECIN-ŚWINOUJŚCIE

**We build  
the future**

**Port Handbook**  
2018/2019



## Welcome to ports of Szczecin and Świnoujście



Welcome to seaports Szczecin and Świnoujście, a modern, universal and rapidly growing port complex on the Baltic Sea. We are a convenient location for global corporations and local businesses alike. They all benefit from our potential, including our favourable location.

The port complex is situated in the Baltic-Adriatic transport corridor, an important part of the core TEN-T network, on the shortest route linking Scandinavia and Central and Southern Europe, and on the sea route between the East and the West of Europe.

Our clients use loading, storage and packaging services for a wide variety of their goods. We handle dry and liquid bulk cargo, as well as general cargo, including containers, and ferry traffic. In our Duty Free Zones, goods from beyond the European Union can be stored without the need to pay customs duties and taxes.

We support import of goods from all over the world, and the same applies to export of goods to new markets. It is also possible to establish your business operations using our sites for investment and located within the port complex.

We are in the process of rapid growth and changes to meet ever changing external conditions. We are capable of meeting expectations of our clients by investing into new facilities, sometimes in partnership with our operators. Being one of the largest investors in the Western Pomerania Region, we are a natural driver for regional development.

The EU budget period of 2014-2020 has opened new possibilities in terms of planning the development

of ports and boost our efforts for enhancing investment attractiveness and competitiveness.

The planned extension of our port infrastructure will adjust our berthing facilities to handle larger vessels. Our plans also include the building of new deep water berths, both in Szczecin and Świnoujście. This should also improve our capacity for handling of intermodal transport.

Soon, we may also benefit from the development of port access infrastructure implemented by other entities. Those other projects include the dredging and modernization of the Świnoujście-Szczecin fairway to 12.5 m, the extension of S3 expressway, E-59 and CE-59 railway mains and improved navigation conditions on the Oder Waterway.

Year 2018 is expected to bring three very important international events that will be hosted by Szczecin. They include the World Maritime Day, an annual event organised by IMO in various countries, the International Maritime Congress, and the Baltic Ports Organization Conference. The fact that Szczecin was selected to host those events shows the growing economic importance of our port complex.

The Ports of Szczecin and Świnoujście are looking forward to cooperating with you.

**Dariusz Ślaboszewski**

*President of Board  
Szczecin and Świnoujście  
Seaports Authority*



## Contents



3	Foreword
6-7	Advantageous location
8-13	Bulk cargo centre
14-17	Experts in general cargo
18	Leader in handling of ferry traffic
19	Scheduled shipping services
20-21	Szczecin-Świnoujście cruise destination
22-23	Duty free zone
24-25	Ports in figures
26	Leading role of the Ports Authority
27-29	Development is our goal
30-33	Exceptional potential of the outer port
34-35	Investment opportunities
36-37	12,5m for Szczecin: large investment - large benefits
38-41	Environment friendly ports
42-43	Safety and security
44-47	Experience and tradition
48-52	Maps
53-54	Port particulars
55-61	Stevedoring services companies
62-63	Service companies
64-71	Directory of companies

# Advantageous location



**The ports complex of Szczecin and Świnoujście is one of the largest cargo handling centres on Baltic.**

*It is also one of the most important transport nodes in the South Baltic Sea.*

## Location

**Szczecin and Świnoujście** are the most westward located Polish cities. The favourable location is the ports major asset. The ports are situated on the shortest route between **Scandinavia** and through the **Baltic Sea** between the countries of the **Eastern Baltic Region**, i.e. Russia, Finland, Lithuania, Latvia, Estonia, and the countries in Western Europe, especially Germany.

**The ports of Szczecin and Świnoujście** are the closest seaports for the western part of Poland, including the industrialized region of **Silesia** and **Lower Silesia** with heavy industry and high-tech production. They are also the closest seaports for eastern part of **Germany** as well as for the **Czech Republic and Slovakia**, for which **Szczecin and Świnoujście** have been traditionally the **most important sea ports**.

## Transport accessibility

**The ports of Szczecin and Świnoujście** are connected to the European system of motorways via Polish A6 leading to German A11 and A20. The ports have efficient links to national roads leading to the south of Poland, Czech Republic, Slovakia and Hungary, in particular national road no. 3 (E65), which is now under upgrading into a dual carriageway express road S3.

**Both ports are crucial elements of the Baltic-Adriatic Transport Corridor**, as well as the tri-modal **Central European Transport Corridor** linking Scandinavia with Central and Southern Europe by international road E65, railway lines E59 and C-E59 and the Oder River.

Another major asset for the ports is the accessibility for **inland shipping**, a mode of transport considered by the EU to be the most environmentally friendly. The access to the inland waterway system of **Western Europe** is particularly important for servicing of the **German** market. Inland waterways transport can reach directly **many important economic centres of Berlin and Brandenburg**.

Due to their specific location, **the ports of Szczecin and Świnoujście** complement each other. Świnoujście, a bulk cargo and ferry port, is located on the coast of the Baltic Sea, whereas Szczecin, a universal inland port, is situated **68 km upstream of the Odra River**.

Situated much closer to consignees and consigners, the port of Szczecin provides opportunity to use the **cheapest sea transport mode** for handling cargo.



## Distance from Szczecin

Berlin	140 km
Eisenhüttenstadt	180 km
Prague	533 km
Bratislava	783 km
Vienna	805 km
Budapest	900 km
Poznań	234 km
Wrocław	371 km

centre

Bulk cargo

centre



The ports complex of Szczecin and Świnoujście is one of the largest dry bulk cargo centres on the Polish seacoast.

The port complex is **crucial for the Polish economy**. This large dry bulk cargo centre handles the majority of sea-shipped imported iron ore and **huge quantities of coal**. In 2017, the volumes of iron ore reached 2,480 thou. tons while the volumes of coal over 2,076 thou. tons. Fertilizers as well as grain and other agribulks have become also important items. In 2017, the volumes of fertilizers reached 1,460 thou. tons, of which 230 thou. tons in bags. Same year the volume of grain reached 1,462 thou. tons.

Other dry bulk cargo handled in **the ports of Szczecin and Świnoujście** include aggregates, coke, dry and liquid chemicals and minerals. Bulk carriers up to 270 m in length, 13.5 m in draught and about 100,000 DWT can berth in Świnoujście while Szczecin can handle vessels up to **215 m in length and 9.15 m in draught**. Both ports are complementary to each other: after partial unloading in Świnoujście, some bulk carriers proceed to Szczecin for their final discharge.

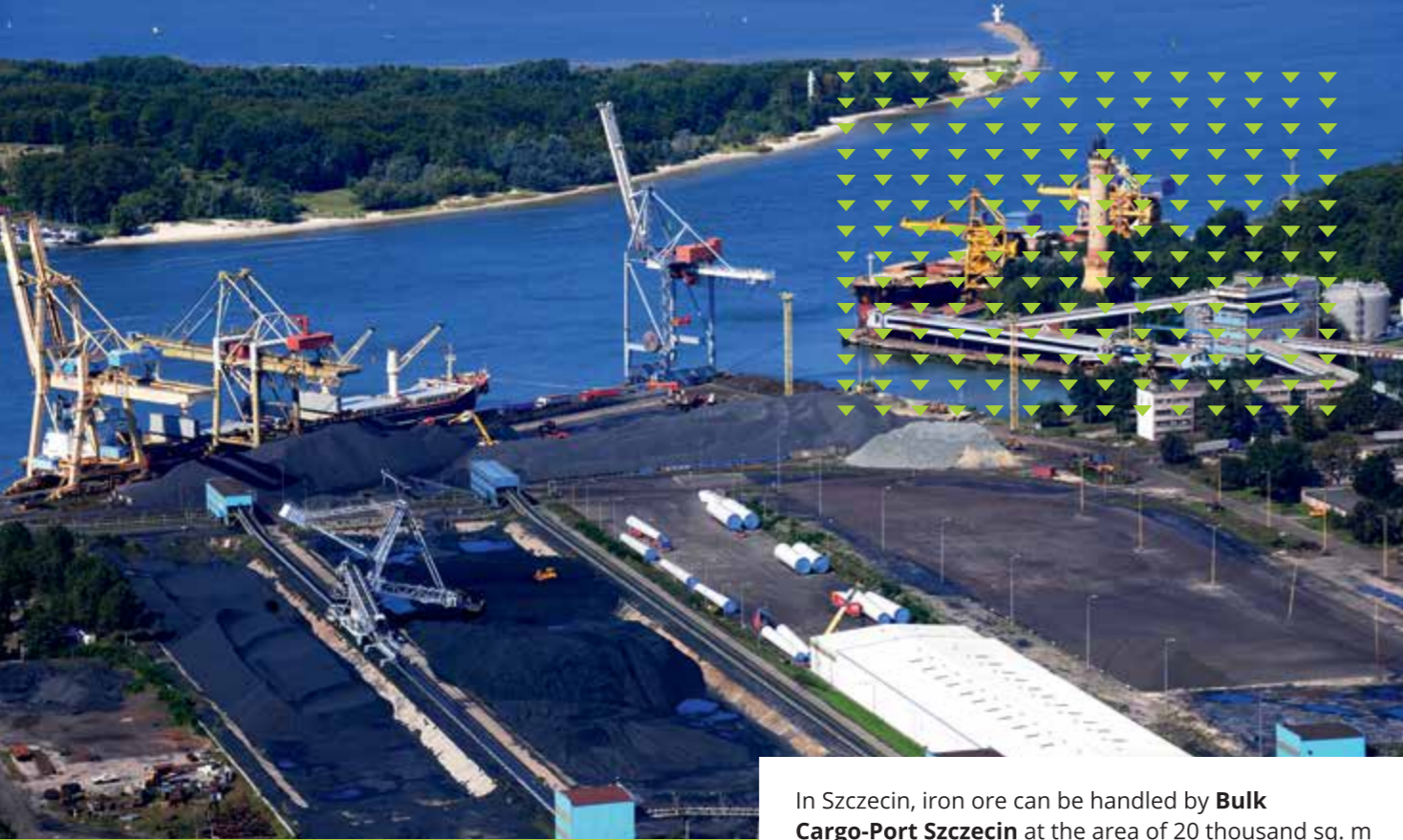
Similarly, ships partly loaded in Szczecin go to Świnoujście to complete their loading. Bulk handling operations are provided chiefly by two large companies: **Bulk Cargo-Port Szczecin** and **OT Port Świnoujście** – both of which operate a number of dedicated quays, storage facilities and handling equipment manned by experienced personnel.

**OT Port Świnoujście** handles mainly bulk cargo, which accounts for about **95%** of their throughput. Big volumes of exported coal, which have prevailed in the past, nowadays are replaced with imported steam and coking coal for coking plants in **Poland, Slovakia and Czech Republic**. The **Hutników Quay in Świnoujście** specializes in handling big shipments of imported iron ore. Its annual capacity is about **12 million tons per year**. The terminal **in Świnoujście** offers handling of aggregate, biomass, coke, grain, containers, steel products, project cargo and other general cargo. The quality of services has been confirmed by the **ISO 9001:2008 certificate**.

**Bulk Cargo-Port Szczecin** is the most universal stevedoring company in Polish ports with a comprehensive handling, storage and forwarding services for all kinds of cargo. It operates **11 multipurpose quays** providing up to **3,500 m of berthing line**. The company specializes in handling and storage of bulk cargo, such as coal, coke, iron ore, scrap metal, grain, liquid bulks, etc. and general cargo. The quality of services has been confirmed by the **ISO 9000:2015 certificate**.



OT Bulk Cargo



## Coal

Coal is one of the largest cargo volumes handled in **the ports of Szczecin and Świnoujście**. In **Świnoujście**, coal loading rate accounts for up to **25,000 tons/day** unloaded at **Górników and Hutników quays**.

**The Górników Quay** is equipped with two wagon tipplers, de-freezing installation, 156,000 square metres of open storage for up to 1,000,000 tons, and a ship loader capable of handling 2,000 tons per hour.

Unloading of vessels is provided by two mobile Liebherr cranes. **The Hutników Quay** is equipped with **40 t and 25 t gantry cranes**.

Also in Szczecin, **Bulk Cargo-Port Szczecin** is one of companies providing transshipment of coal. Their storage area for steam coal is sufficient for 250 thousand tons, and for sized coal up to 50 thousand tons.

## Iron ore

Iron ore is handled mainly at **the Hutników Quay** in Świnoujście which is equipped with **40 t and 25 t gantry cranes**, providing the total handling capacity of 25,000 t per day, **the largest one on the Polish coast**. There is an open storage area of **total 70,000 tons**.

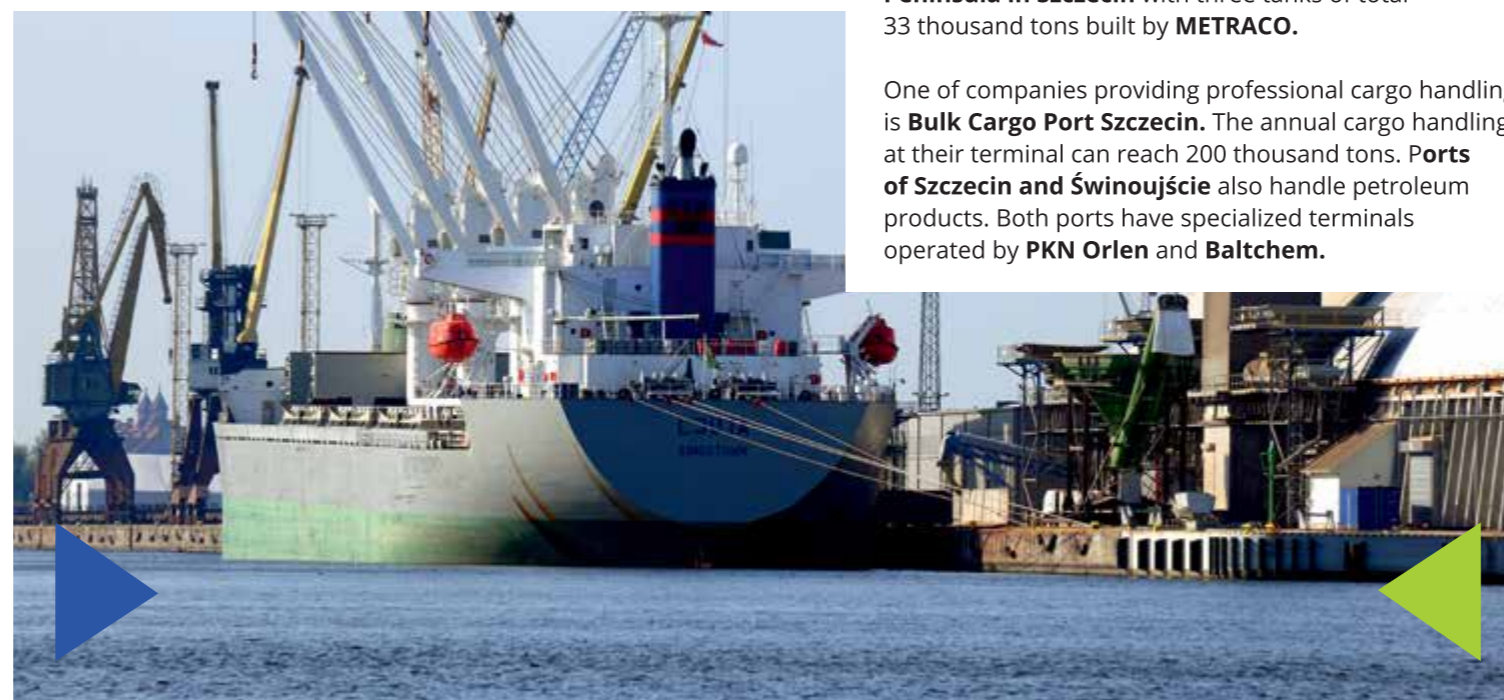
Unloading and loading also take place at **the Chemików Quay** equipped with two 20 t gantry cranes, a sheltered conveyor and storage space for **100,000 tons**.

In Szczecin, iron ore can be handled by **Bulk Cargo-Port Szczecin** at the area of 20 thousand sq. m designed for about 150 thousand tons of this kind of heavy goods.

## Biomass

**The ports of Szczecin and Świnoujście** offer handling and storage of bulk volumes of biomass, **both in export and import**.

Cargo can be handled **directly or indirectly** and stored on paved yards or in roofed warehouses depending on **the type of cargo**.



## Liquid bulk cargo

Recently, the liquid cargo handling capacity has enlarged by establishing the **LNG terminal in the outer port of Świnoujście**. The **LNG terminal** can handle vessels of up to **315 m in length, 12.5 m in draught** and capacity of **217.000 m³**. In 2017, the volumes of **LNG** handled in **Świnoujście** reached **1,250 thou. tons**.

Also other kinds of liquid bulk cargo are handled in both ports. In **the port of Świnoujście**, Czech manufacturer **DEZA** operates a tar pitch terminal with a yearly throughput of about **40,000 tons**.

Similarly, Szczecin also has dedicated terminals for pitch and coal tar handling, which operate at **Huk Quay, Wałbrzyskie Quay** and **Parnica Quay**.

Another terminal dedicated to liquid cargo is the sulphuric acid terminal operated at the **Katowicki Peninsula in Szczecin** with three tanks of total 33 thousand tons built by **METRACO**.

One of companies providing professional cargo handling is **Bulk Cargo Port Szczecin**. The annual cargo handling at their terminal can reach 200 thousand tons. **Ports of Szczecin and Świnoujście** also handle petroleum products. Both ports have specialized terminals operated by **PKN Orlen** and **Baltchem**.

## Grain and agribulk products

Both ports of Szczecin and Świnoujście provide handling and storage services for grain and agri-bulk products. An example of that is **the Szczecin Bulk Terminal** located at the Zbożowe Quay, in the Port of Szczecin. The terminal has been modernized recently and equipped with a modern fully automated silo handling equipment of total capacity 50,000 tons. Loading rates up to 20,000 tons/day for grain place the Szczecin Bulk Terminal among the fastest grain terminals on the Polish coast and one of the fastest on the Baltic Sea.

It is the largest grain silo in the port of Szczecin, which allows a multi-bulk handling in import and export. The terminal is equipped with comprehensive grain handling technology in addition to a modern and fully equipped laboratory. The Szczecin Bulk Terminal is **GMP+ B3** and **ISO certified**.

**Elewator EWA** Ltd. operates another grain and feed flat storage with the capacity of **45,000 t**. The terminal provides agri specialized service for all kind of grains, feed meals and biomass. All handling operations are supervised by a computer controlled system. The company is **GMP+** and **ISO certified**.

**Bulk Cargo – Port Szczecin** also provides handling of grain and feed. The company focuses on export of Polish grain, such as wheat, rapeseed, and maize, and import of mainly soy meal. The infrastructure dedicated for grain operations includes modern flat storage warehouses with **GMP+ B3 certificate**.

There are three other silos in **the port of Szczecin** of total storage capacity **70,000 tons**.

In **the Port of Świnoujście**, a big cereal terminal of Bunge operates at **the Portowców Quay**. This modern terminal with storage capacity of **50,000 tons** can handle all types of cereal.



PORTAL

# Experts in general cargo

With the container transport growing in **the Baltic Sea Region**, every year the importance and opportunities of our port increase as well.

**The ports of Szczecin and Świnoujście** handle ever increasing volumes of containers and general cargo, including steel products, nonferrous metals, paper and wood pulp, project cargo, heavy loads and oversized goods, as well as other cargo, such as granite blocks and unitized goods.

These types of cargo require **highly specialized** and **skilled staff**, familiar with handling techniques, stowage and fastening of cargo, and capable of operating **highly efficient equipment**.

Prosperity in handling of steel products and non-ferrous metals. For many years, the port of Szczecin has specialized in steel and non-ferrous metals.

Among other, Szczecin-based stevedoring companies, e.g. **DB Port Szczecin**, **Fast Terminals**, **Bulk Cargo Port Szczecin**, and those based in **Świnoujście**, such as **OT Port Świnoujście**, reload metal sheets, rolls and packages, wire rods, slabs, billets, logs, steel sheet piles, profiles, pipes and others.

**DB Port Szczecin** is the leader in non-ferrous metals, handling mainly aluminium wire coils on pallets, ingots, t-bars, billets and slabs. The cargo can be stored both at yards and in roofed warehouses. Terminal operators offer full range of additional services such as sorting, marking, weighing, rotating, assembling, cleaning, stuffing and stripping, etc. Experienced staff and dedicated equipment take care of high quality of cargo handling.

In 2017, the volumes of steel products in **Szczecin and Świnoujście** reached 1,134 thou. tons, while the quantity of reloaded non-ferrous metals reached 311 thou. tons.



## Forest products

Wood pulp, as well as paper can enjoy top quality service at specialized terminals in the port of Szczecin: DB Port Szczecin with 60,000 m<sup>2</sup> storage area in warehouses, including 21,000 m<sup>2</sup> of modern warehouses for forest products (one of them offers railway track of 190 m and enables to load cargo onto topped railway cars). Others include Fast Terminals and Bulk Cargo Port Szczecin. In 2017, the volume of wood pulp was 550 thou. tons, whereas paper was 142 thou. tons.



## Project cargo

In **the port of Szczecin**, stevedores have great experience in handling oversized goods and heavy lifts.

All kinds and types of project cargo can be handled in **Szczecin**, including components of offshore wind farms, transformer stations and gantry cranes, as well as vehicles, etc.

In order to handle such cargo, **DB Port Szczecin** provides two modern self-propelled **Gottwald** cranes of **100 t lifting capacity each**. There is also a possibility to use a **260 t floating crane**. The access to inland waterways is a big advantage attracting project cargo frequently reloaded to or from river barges.

Also in **Świnoujście** project cargo can be handled. Two mobile cranes of 140 t capacity each are operated by **OT Port Świnoujście at the Górników Quay**. Coupled together they can lift up to 250 tons.

Thus, handling heavy items is more efficient and less expensive.

## Container traffic

Regular container feeder services connect **DB Port Szczecin** with European ports of Hamburg, Bremerhaven (D), Gdynia (PL), Klaipėda (LT), Riga (LV),

and Drammen, Immingham, Teesport, and Felixtowe (UK). **DB Port Szczecin** provides services to all important global container shipping lines, such as **APM-Maersk, CMA CGM, OOCL, Evergreen, APL, Hapag-Lloyd, COSCO, NYK** and others, as well as feeder and short-sea operators. In 2017, the container transshipment reached 93,580 TEU.



In **2011**, in **the port of Szczecin**, a new container terminal operated by **DB Port Szczecin** was opened to meet the demand of the market. The 120,000 TEU terminal was built in the middle of **the port of Szczecin at the Fińskie Quay**, next to the infrastructure prepared for **the West Pomeranian Logistic Centre**. The New Container Terminal with open storage yards has the area of above 45,000 m<sup>2</sup>. It is possible to store 5,000 TEU simultaneously.

A large depot is fitted with dedicated equipment, such as 2 STS container cranes of up to 45 tons, 4 RTG cranes up to 40 t, 2 100 t Gottwald cranes and a ro-ro ramp. Apart from servicing the feeder traffic, the port of Szczecin, as the most western Polish port, enjoys a favourable position to establish short sea shipping connections, e.g. to the UK, Russia and Scandinavia.

In **Świnoujście**, **OT Port Świnoujście SA**, with two quays of 330 m each and the draft of 13.5 m, is able to handle "Panamax" container carriers or general cargo ships. One STS Kocks gantry crane and two Mobile Liebherr Cranes LMH 500 can secure smooth and fast handling of any kind of break bulk and containers.

Current storage facilities enable the terminal to store 2,000 TEU on CY with 80 reefers and direct block trains dispatch. At the moment, the port of Świnoujście is used by Eimskip Island, a container operator, providing container services to and from Aarhus (DK), Skrabster (SCT), Halmstad (SE), and Thorshavn/Runavik (FRO).

## Innovative solutions

Efficient goods handling requires effective administrative procedures and good cooperation between governmental agencies and businesses during integrated inspections.

Therefore, the implementation of the operation system in the DB Port Szczecin Terminal started a close cooperation with the governmental agencies.

Thus, according to the concept, operators and clients can submit all documents and information necessary to complete all export and import formalities in just one place, i.e. in the customs office. This considerably speeds up and simplifies customs clearance and improves availability and exchange of information between the operator, clients and customs authorities.

The cooperation is based on a one-stop-shop concept encompassing necessary controls at one time and place.

The system provides such advantages as immediate exchange of information between the offices and customers, easy data transfer, assurance of constant control over the goods, elimination of paperwork, assurance of cargo safety, reduced number of controls and faster customs clearance, and costs savings.





# Leader in handling of ferry traffic

The **Ferry Terminal Świnoujście** is the largest ferry terminal **in Poland** and one of the most modern terminals on the **Baltic Sea**.

Its location on the shortest route between **Scandinavia and Southern Europe** has been considered a major advantage for many forwarders and passengers. It is **the only terminal in Poland** to provide rail cargo handling to and from Sweden.

Every day, the terminal offers up to **13 departures** to Sweden, constituting the **“Motorway of the Sea”** between Świnoujście and Scandinavia. It is the leader as regards the number of calls, as well as the size of passenger and cargo traffic. **The ferry traffic in Świnoujście** has been **growing every year** and the terminal still has excess cargo handling and development potential.

The **Świnoujście ferry terminal** is open to new market trends. In 2015, new ferry post no.1 started its operation to enable the terminal to handle larger ferries. The new ferry post is capable to handle ferries of 220 m in length. In the EU budget period of 2014-2020, plans include an investment project increasing the potential of ferry terminal in Świnoujście, namely adjusting its infrastructure to service intermodal transport by, among others, modernizing (connecting) ferry posts 5 and 6.

That is our response to the challenge of modernisation and expansion of the "motorway of the sea" linking the ferry terminal in Świnoujście with the port of Trelleborg. The European Commission has approved the funding for the project.

## Scheduled shipping services

Destination	Port	Shipping Company	Agent	Cargo	Frequency
-------------	------	------------------	-------	-------	-----------

### Port of Szczecin

Denmark	Vejle, Frederica	AtoB@Shipping AB	iLogBaltic	General cargo	1 /week
Denmark	Copenhagen	Unifeeder	Unifeeder Polska	Containers	1/week
Estonia	Tallinn	Unifeeder	Unifeeder Polska	Containers	1/week
Finland	Rauma	Unifeeder	Unifeeder Polska	Containers	1/week
Finland	Raahe, Turku	AtoB@Shipping AB	iLogBaltic	General cargo	1/ week
Finland	Pietersaari	UPM-Kymmene Oyj Logistics	Poseidon & Frachtcontor Junge Szczecin	General cargo	Depending on volume of cargo
Germany	Bremerhaven	Unifeeder	Unifeeder Polska	Containers	1/week
Germany	Hamburg	Unifeeder	Unifeeder Polska	Containers	1/week
Great Britain	Immingham	Unifeeder	Unifeeder Polska	Containers	1 /week
Great Britain	Felixtowe	Unifeeder	Unifeeder Polska	Containers	1 /week
Great Britain	Flixborough	Fast Lines	Fast Baltic	General cargo	3/month
Great Britain	Goole	Fast Lines	Fast Baltic	General cargo	Depending on volume of cargo
Great Britain	Howdendyke	Fast Lines	Fast Baltic	General cargo	Depending on volume of cargo
Great Britain	London	Fast Lines	Fast Baltic	General cargo	Depending on volume of cargo
Great Britain	Seaham	Fast Lines	Fast Baltic	General cargo	Depending on volume of cargo
Ireland	Belfast	Fast Lines	Fast Baltic	General cargo	Depending on volume of cargo
Ireland	Drogheda	Fast Lines	Fast Baltic	General cargo	Depending on volume of cargo
Lithuania	Klaipeda	Unifeeder	Unifeeder Polska	Containers	1/week
Latvia	Riga	Unifeeder	Unifeeder Polska	Containers	1/week
Netherlands	Rotterdam	Unifeeder	Unifeeder Polska	Containers	1/week
Netherlands	Vlissingen	UPM-Kymmene Oyj Logistics	Poseidon & Frachtcontor Junge	General cargo	Depending on volume of cargo
Norway	Drammen	Unifeeder	Unifeeder Polska	Containers	
Russia	St.Petersburg	Hansa Shipping Limited	Pol-Agent	General cargo	1/week Depending on volume of cargo
Russia	St.Petersburg	Short Sea Express Lines	Rhenus Port Logistics	General cargo	Depending on volume of cargo

### Port of Świnoujście

Denmark	Aarhus	Eimskip Island	Euro Forwarding and Shipping Agency	Containers	2/month
Denmark	Danish Ports	Nor Lines	Poseidon & Frachtcontor Junge Szczecin	General cargo/Containers	1-2/week
Finland	Turku	Nor Lines	Poseidon & Frachtcontor Junge Szczecin	General cargo/Containers	2/month
Faroe Islands	Runavik, Thorshavn	Eimskip Island	Euro Forwarding and Shipping Agency	Containers	2/month
Germany	Rostock	Nor Lines	Poseidon & Frachtcontor Junge Szczecin	General cargo/Containers	1-2/week
Norway	Ports of Northern and Western Norway, ports of Oslofjord	Nor Lines	Poseidon & Frachtcontor Junge Szczecin	General cargo/Containers	1-2/week
Norway	Ports of Western Norway	Norwest Ship Management	Euro Forwarding and Shipping Agency	General cargo	2/month
Scotland	Skrabster	Eimskip Island	Euro Forwarding and Shipping Agency	Container	2/month
Sweden	Halmstad	Eimskip Island	Euro Forwarding and Shipping Agency	Containers	2/month
Sweden	Swedish Ports	Nor Lines	Poseidon & Frachtcontor Junge Szczecin	General cargo/Containers	1/week
Sweden	Trelleborg	TT-Line	TT-Line Polska	Passenger/Car ferry	1-2/day
Sweden	Ystad	Polferries	PŻB	Passenger/Car ferry	2-3/day
Sweden	Ystad	Euroafrica	Unity Line	Train/Car ferry	2/day
Sweden	Trelleborg	Euroafrica	Unity Line	Passenger/Car ferry	2/day
Sweden	Ystad	Unity Line	Unity Line	Passenger/Car ferry	2/day
Sweden	Trelleborg	Unity Line	Unity Line	Passenger/Car ferry	2/day



## Szczecin-Świnoujście cruise destination

▼ ▼ ▼  
**Szczecin and Świnoujście** are among of the most attractive cities in Poland. Their favourable location, history, facilities and attractions are good reasons for exploring these **cruise destinations**.

**Szczecin**, founded in the 9th century, is a former **Hanseatic League member**. The city enjoys over a thousand years of history. It has a unique nature and captivating charm of **Art Nouveau architecture** and the beauty of its rich vegetation. Some of special attractions really worth visiting include the Castle of Pomeranian Dukes, churches of the Old Town, St. James Cathedral and the famous showpiece embankment of **Wały Chrobrego**. All of them make Szczecin a popular destination for river and seagoing cruises.

For people interested in history and architecture the best choice is to take a walk along **the City Tourist Trail**. It is seven kilometres long and allows to visit **42 most interesting places** in the city. The trail is very easy to find and follow – just look for the red line marked on the pavement.

Today's Szczecin is a rapidly developing city full of amenities where tourists can enjoy good food and shopping. The city's major advantage is the proximity of **Berlin** (only 144 km), which provides opportunity for making one-day trips to a top class tourist destination.

On the route **between Szczecin and Świnoujście**, the unspoilt nature and pleasurable ambience of the **Szczecin Lagoon** (Zalew Szczeciński) attracts visitors. **The Woliński National Park**, situated close to Świnoujście, is famous for its high cliffs, **the Turquoise Lake** and **the European bison breeding centre**, the biggest attraction for people interested in nature. In the middle of the Woliński National Park situated is Międzyzdroje, a major tourist destination, with the longest pier on **the Polish coast**.

**Świnoujście is the only Polish city located on several islands**. Its special microclimate attracts people interested in visiting health resorts. It is famous for the tallest lighthouse and the widest beach on the Polish coast. Świnoujście can offer something special for fans of military history, namely guided tours to the 19th century fortification. One of the top attractions is the nearby sea resort of **'Drei Kaiser Bader'** in Germany, with its beautiful classical architecture.

In both ports, cruisers can berth in the hearts of the two cities. Ships can use berthing facilities in both ports after paying just one tonnage fee. In Świnoujście, cruisers can berth at the **Władysława IV quay**, situated next to the city centre. In the city centre of Szczecin, **the Wały Chrobrego** quay can handle cruisers of maximum length 215 m and draught 6.5 m. Vessels up to 9.15 m in draught can use other alternative quays.

Apart from cruisers, **Szczecin** regularly attracts river passenger vessels thanks to its link with **the European** inland waterways system.

# general cargo

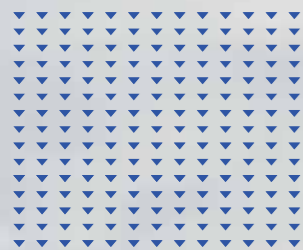
## Duty free zone

The **Szczecin Duty Free Zone (DFZ)** of 11.5 ha provides full range of services offered by the port, including warehousing and packaging, as well as facilities for commercial activity, industrial production, technical services, etc. It is situated in the general cargo area of the port. It consists of 5 quays of total 1,377 m, two warehouses, including a multi-storey heated warehouse of 22,000 m<sup>2</sup>, cargo lifts and fumigation halls.

The area of open air storage is **60,000 m<sup>2</sup>**. The **Ports Authority** provides administration of the Zone, whereas **DB Port Szczecin Sp. z o.o.** and **Fast Terminals Sp. z o.o.** are responsible for its operation. Any type of industrial activity, services and commerce can be developed in the **DFZ**.

The major advantage of the zone is that the storage of cargo imported from outside **the European Union** is free from customs duties and taxes.

Thus, the **DFZ in Szczecin** is the main Polish and one of the largest in Europe centre for transshipment and distribution of granite blocks and cocoa grain imported from non-EU countries.



# Ports in figures

Both ports comprise a universal port complex with a well-balanced structure of handled cargo, which has been reflected in the operating profit of 2017.

The Szczecin-Świnoujście port complex recorded exceptionally high cargo handling figures in 2017. The two ports handled nearly **25.5 million t of cargo in 2017**. This translates into an **increase of 5.4%** comparing with 2016.

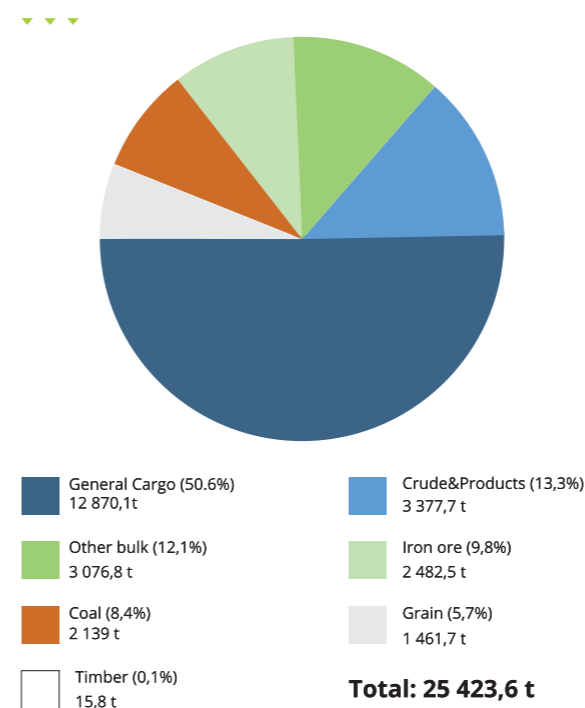
## Cargo handling

The lead types of cargo, with a double digit growth, is ore and fuel, handling of which amounted to +59.4% and +46.7 respectively. The demand for ore from Polish, Slovak and Czech steel mills accounts for excellent results in this cargo group, whereas fuel handling increased mainly due to the operation of **the LNG terminal in Świnoujście**, as well as larger import of crude oil from Russia and export of upgraded oil to the West of Europe.

Other bulk did very well last year **(+5.4%)**. The same applies to general cargo **(+4.2%)**, including general cargo transported by ferries **(+6.9%)**. Positive results were also noted by containers handling which improved by **3%** comparing with the previous year.

A drop in grain handling was a major surprise as the ports handled **28.6% less grain**. It was the result of adverse weather and rainy summer of last year. Unfortunately, last year, the downward trend also continued in the handling of coal. 2017 figures were 27% lower than in 2016. In total, the two ports handled 25,423.6 thou. t of cargo, which is 1,310.6 thou. t more than in 2016. This translated into an increase **by 5.4%**.

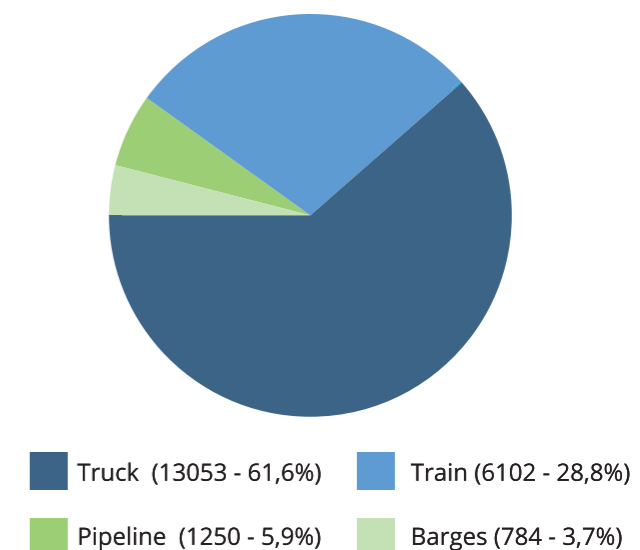
**The Ports Authority** foresees that the upward trend should continue through 2018 to reach 26 million t of cargo handled at the year end. We should remember, however, that the market has its ups and downs and some negative factors, beyond the control of **the Ports Authority** and loading companies, may affect cargo volumes handled.



Cargo handling in ports of Szczecin and Świnoujście in 2017 (thou. tons)

## Hinterland Transport

In 2017, in **the ports of Szczecin and Świnoujście**, 61,6% of cargo was transported by road, 28,8% by rail, 5,9% by pipelines, and 3,7% by barges.

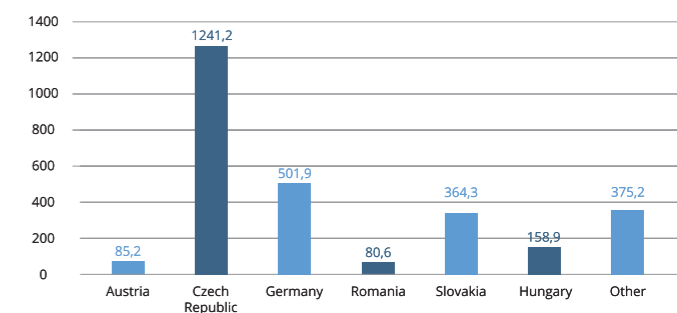


Modes of transport in Szczecin and Świnoujście seaports in 2017

## Transit

In 2017, the ports of Szczecin and Świnoujście handled 2807,3 thousand tons of transit cargo, which accounts for about 11% of the total transit going through Polish seaports, after excluding the export of Russian oil.

As regards the contribution of different countries in the structure, the largest transit partner for the ports of Szczecin and Świnoujście is the Czech Republic accounting for 44,21%. The second major country regarding transit is Germany with 17,88 %. Other countries transporting transit cargo through the ports of Szczecin and Świnoujście include Slovakia, Hungary, Austria and Romania.



Transit cargo via Szczecin and Świnoujście in 2017 (thousand tonnes)

# Leading role of the Ports Authority

A big advantage for the two ports is that they are managed by a single organisation, namely the Szczecin and Świnoujście Seaports Authority. Its responsibilities include:

- ▶ management of the ports and their infrastructure;
- ▶ planning and development;
- ▶ construction, expansion, maintenance and modernization of port infrastructure;
- ▶ acquisition of land for development
- ▶ provision of infrastructure and support services for port service companies
- ▶ setting of port dues according to a published tariff.

The **Szczecin and Świnoujście Seaports Authority** aims at creating a favourable environment in which the whole ports community can prosper. This can be achieved by attracting new investment and new companies into the ports and ensuring that existing companies have the best possible conditions for their operation. In order to succeed, the ports authority has been implementing its development and modernization programme in both ports.

With the port authority effectively excluded from providing port services, the responsibility for operating terminals and quays is handed over to various independent companies. The majority shareholder in the **Ports Authority** is the **State Treasury**.

- ▶ **Development of Ports, EU funds and research and development projects**  
[development@port.szczecin.pl](mailto:development@port.szczecin.pl)
- ▶ **Finance**  
[finance@port.szczecin.pl](mailto:finance@port.szczecin.pl)
- ▶ **Port services and dues tariff**  
[commercial@port.szczecin.pl](mailto:commercial@port.szczecin.pl)
- ▶ **Investment land and support for investors**  
[investor@port.szczecin.pl](mailto:investor@port.szczecin.pl)
- ▶ **Warehouses, offices and space for rent**  
[lease@port.szczecin.pl](mailto:lease@port.szczecin.pl)
- ▶ **Infrastructure**  
[assets@port.szczecin.pl](mailto:assets@port.szczecin.pl)
- ▶ **Duty Free Zone**  
[dfz@port.szczecin.pl](mailto:dfz@port.szczecin.pl)
- ▶ **Coordination of port operation/dispatching**  
[dispatcher@port.szczecin.pl](mailto:dispatcher@port.szczecin.pl)
- ▶ **Marketing and promotion**  
[promotion@port.szczecin.pl](mailto:promotion@port.szczecin.pl)  
[marketing@port.szczecin.pl](mailto:marketing@port.szczecin.pl)
- ▶ **Spokesperson**  
[press@port.szczecin.pl](mailto:press@port.szczecin.pl)
- ▶ **Human Resources/Training**  
[hr@port.szczecin.pl](mailto:hr@port.szczecin.pl)

- ▶ **Public procurement**  
[przetargi@port.szczecin.pl](mailto:przetargi@port.szczecin.pl)
- ▶ **Port Security**  
[isps@port.szczecin.pl](mailto:isps@port.szczecin.pl)
- ▶ **Environment Protection**  
[environment@port.szczecin.pl](mailto:environment@port.szczecin.pl)
- ▶ **Laboratory of Work Environment Research**  
[laboratory@port.szczecin.pl](mailto:laboratory@port.szczecin.pl)
- ▶ **Fire Protection**  
[psr@port.szczecin.pl](mailto:psr@port.szczecin.pl)



The **Ports of Szczecin and Świnoujście** are active in adjusting to trends on the port and shipping markets. Their rapid growth is supported by large scale EU funded investment projects. In total, for the years **2007-2020**, the value of the implemented and planned projects has been estimated at nearly **EUR 480 mio**.



## Investment in global service standard

The value of the **2007-2013** investment programme amounted **EUR 150 m**. The **2014-2020** plan is far more ambitious: **The Szczecin and Świnoujście Seaports Authority** intends to invest **EUR 330 m**.

Already today, the port complex is one of the largest investors in the region, successfully utilising **EU funds**. Another PLN 2 bn is expected to be invested by other entities implementing their projects in access infrastructure to the two ports. The total investment translates into a **new quality of cargo handling and support for investors**.

**The overall investment priority is to improve access to the ports and enhanced transport handling quality.**

For this purpose, new quays will be built and existing ones modernised to handle larger vessels. Projects scheduled in the **2014-2020** EU budget period include, among others, the extension of port infrastructure in the bulk and break bulk cargo handling areas, namely the investment near **the Dębicki Canal** and **Kaszubski Basin in the port of Szczecin**.

Technical parameters of quays will be aligned with the new **12,5 m** depth of **the Świnoujście-Szczecin fairway**. In **Świnoujście**, the ferry terminal will be extended to make it suitable for intermodal transport, including handling of the largest possible ferries

on **the Baltic Sea** as well as cruise ships. In the outer port of **Świnoujście**, a new redistribution facility will be built in the **LNG terminal**. Plans also include an eastward expansion of the outer port and construction of a container terminal.

There are also plans to build new deep water berths in **the ports of Szczecin and Świnoujście**. An example of that is **the Ostrów Grabowski Peninsula in Szczecin**, where new quays with **12.5 m** technical draught will finally be built. This is expected to stimulate further investment and development in the two ports.

## Good links with hinterland

The improved accessibility of **Szczecin and Świnoujście** from the water side will contribute to the enhanced cargo handling capacity. This will support efficient links with the ports' hinterland. Therefore, to promote the development of the ports, it is important to attract investment by other entities, since they contribute to efficient and safe access to **the ports of Szczecin and Świnoujście**.

Those include the following:

- ▶ Modernisation of **the Świnoujście - Szczecin Fairway**. The project includes modernisation of **62 km** of the **Świnoujście - Szczecin fairway** by dredging it to **12.5 m**. The project is a precondition for other projects planned by **the Szczecin and Świnoujście Seaports Authority** defined in **the Development Strategy for the Szczecin and Świnoujście Seaports** until 2027.
- ▶ Modernisation of the road access to **the port of Szczecin**, including the rebuilding of roads and streets providing access to the port
- ▶ Efficient and environment friendly access to **the port infrastructure in Świnoujście**. The project aims at providing the efficient and safe as well as the least burdensome to citizens and other users access to the current and prospective port areas in **Świnoujście**.

- ▶ Improved rail access to ports of **Szczecin and Świnoujście**. The goal of the project is to increase capacity of railway lines, shortening access/departure time, as well as improved timely arrivals by rail.

## Project finance

The overall implementation of projects listed in the Strategy is going to involve major funding. During **the current EU budget period**, ports can apply for non-returnable funding for projects from such sources as:

- ▶ **The Operational Programme of Infrastructure and Environment**. The Ports Authority has planned to apply for funding from Priority Axis 3 Development of TEN-T road network and multimodal transport, Measure 3.2 Development of sea transport, inland waterways and multimodal services.

**The support of 60% of eligible cost can cover four projects planned by the Ports Authority:**

Extension and modernisation of technical infrastructure in **ports of Szczecin and Świnoujście**,

- ▶ Improved access to the port of Szczecin near **the Dębicki Canal**,

- ▶ Improved access to the port of Szczecin near **the Kaszubski Basin**,
- ▶ Building of a ship post for export of **LNG** in the outer port of **Świnoujście**.

- ▶ **Connecting Europe Facility (CEF)** – a new financial instrument aimed at improving the quality of infrastructure important for Europe and the single market, including **the TEN-T network**.

Being elements of the core network within **the Baltic-Adriatic corridor**, the seaports of Szczecin and Świnoujście receive support for their port infrastructure and access infrastructure project from the **2014-2020 CEF**. Examples of such projects include:

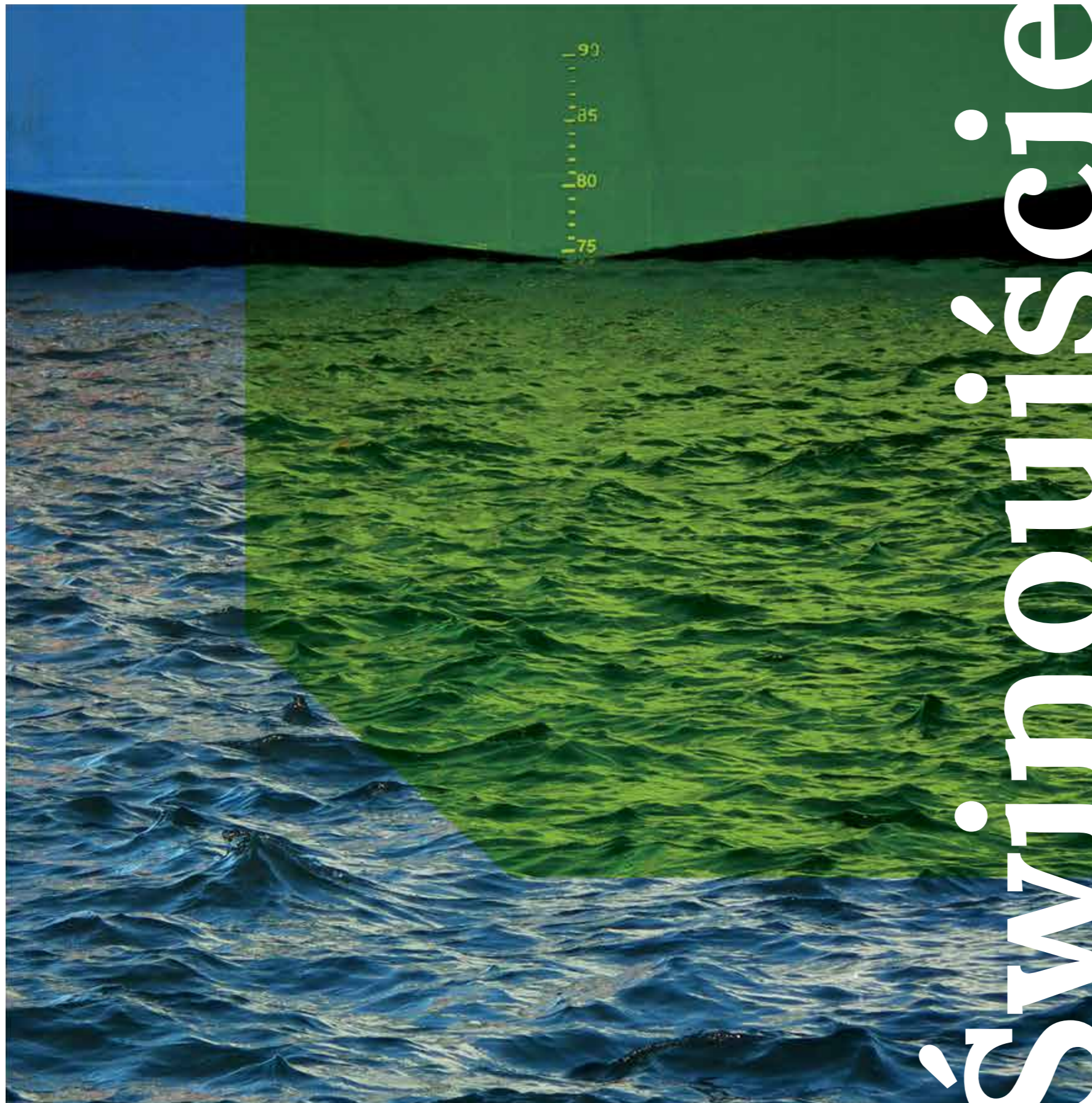
- ▶ Adjustment of the ferry terminal infrastructure in **Świnoujście** to handling intermodal transport;
- ▶ Improved rail access to the ports of **Szczecin and Świnoujście** (principle beneficiary: PKP PLK S.A.)
- ▶ Implementation of **the Pilot Navigational-Docking System** (PNDS) at the ferry terminal in Świnoujście.





Exceptional  
potential  
of the  
outer  
port

ing terminal



# Świnoujście

## Exceptional potential of the outer port

The building of the outer port with the **LNG terminal in Świnoujście** creates a new dimension and prospects for extending services provided by the seaports of **Szczecin and Świnoujście**.

At the end of 2014, the **Szczecin and Świnoujście Seaports Authority** completed an investment project in Świnoujście, which was one of the four projects comprising the largest energy programme in the history of Poland, namely **the building of the LNG terminal in Świnoujście**.

This strategic programme will have a major economic impact at the regional, national, and **European levels**. The main objective was to improve energy and economic security of the country by diversifying gas supplies to Poland. Several organizations were responsible for specific parts of the project.

The project delivered a semi-open outer port basin of 130 ha, of which 20 ha are designated for land reclamation. In the West, the basin is protected by an existing breakwater securing the entry to **the port of Świnoujście**, whereas **a new breakwater of 3 km in length** protects it in the East.

The part of the investment which was implemented by the **Seaports Authority** included building of an unloading platform with safe mooring systems for **LNG** carriers, a trestle bridge and a water intake platform for the technological and fire-fighting purposes, as well as dredging the basin to 14.5 m next to the unloading platform and to 12.5 m along the remaining part of the jetty.

The project received EUR 25 million from **the European Energy Programme for Recovery**. The platform is designed for handling ships with a length of 315 m, width of 50 m, draught of 12,5 m in draught and capacity of 120 to 216 thousand m<sup>3</sup>.

Development plans for this part of the port provide for building of another **LNG** loading facility. The investment involves the building of a jetty with mooring dolphins of about 220 m, including a mooring line of 100 m. The project will deliver the mooring system that enables safe berthing and loading/unloading of **LNG** carriers and bunkering vessels providing the STS service. The project aims at promoting **LNG** redistribution within **the Baltic Sea Region** and bunkering of commercial vessels using environmentally friendly fuel.

Plans also include further eastward development of the outer port and the construction of a container terminal. Thus, the building of the outer port has created a new dimension and prospects for expanding services provided by **the Seaports of Szczecin and Świnoujście**.



# Investment opportunities

## Land available for future investors in the ports of Szczecin and Świnoujście is about 140 ha.

Attractive land suitable for development is an important asset for **the Szczecin and Świnoujście seaports**. **The Seaports Authority** has been encouraging investors to build and operate terminals, as well as establish their industrial facilities in the port.

The ports offer connections to utilities and infrastructure providing access from land and sea. **The Seaports Authority** is committed to cooperate closely with prospective investors at all stages of project development and implementation. Investment sites have been designated for a long-term preferential lease.

The effort made to promote investment in the ports has resulted in attracting a number of foreign companies that have been successfully operating in the ports. There is still about **140 ha of land available for future investors in the ports of Szczecin and Świnoujście**. The plots are located at **the Ostrów Grabowski Peninsula** and **in the West Pomeranian Logistics Centre area**.

The latter is a part of the port specially designated for warehouses and logistics centres.

## Investment areas

**The Ostrów Grabowski Peninsula** offers more than 140 ha of land of various upgrading. Plots are conveniently arranged to suit investor needs. There are plots ranging from around 1.5 ha to clusters of plots exceeding 10 ha. They are situated mainly in the south-west part of **Ostrów Grabowski** and in the immediate vicinity of the container terminal. The upgrading process has covered roughly 33 ha of land so far (silt deposit).

The upgrading process is still in progress and additional plots are being added to the investment offer. The remaining part of the peninsula is partially upgraded and designated for other purposes, such as wastewater treatment, municipal waste incineration facility, roads, railway tracks, and other industrial investments such as warehouses and production.

The other very attractive investment area is **the West Pomeranian Logistics Centre (WLC)**. It is designated for warehouses, production facilities and logistics centres. The **WLC Area** offers plots from 1.8 ha to 9.5 ha. The main advantage is the easy access

by road. Close neighbourhood of the logistic centre infrastructure and the proximity of **the Duty Free Zone** is an undeniable advantage of both investment sites.

### Quays:

**The Fińskie Quay** of 300 m in length and technical depth of 10.5 m provides a ro-ro platform and container terminal. In the EU budget period of 2014-2020, plans include the development of **the Norweskie Quay** of 240 m in length and technical depth of 12.5 m, together with necessary infrastructure for handling classical general cargo, unitized cargo and heavy goods.

The investment plans also include widening of **the Dębicki Canal** to 200 m on its entire length and building of embankment improvement structures, such as an anchored sheet-pile wall of 500 m. **The Szczecin and Świnoujście Seaports Authority** plans to build further quays together with port operators through the public-private partnership.

### Technical status:

Intensive work is in progress to prepare the site (improved load bearing capacity). The site will provide a new convenient access by road and rail and utilities available at the border of the container base, including electricity, water, and wastewater. Yards at **Hryniewieckiego Street** are a natural link with the container base and the logistic centre.

### Designation:

Since they are the largest investment sites in **the port of Szczecin**, and due to their convenient location in the centre of the port, the sites are ideal for developing new port infrastructure and port related industry. In the years to come, plans include the building of technical infrastructure supporting the development of the investment area.

In the western part of **the Dębicki Canal**, general cargo terminals have been planned, including one for unitized cargo. In the East, along **the Mieleński Canal**, land is going to be developed for future bulk cargo terminals, with the use of a direct access to a modernized waterway. After upgrading, land fitted with necessary technical infrastructure will be gradually released to investors.

It is expected that after the completion of **Ostrów Grabowski development**, another stage of extending of the port infrastructure in Szczecin will include the development of **the Ostrów Mieleński Island**.



## 12,5 m for Szczecin Large investment - large benefits



According to the global trend on the shipping market, ships of large draught continue playing an increasingly important role. The standard for **the Baltic Sea** regarding the depth of a sea port basins is **15-16 m**.

The current technical depth of the 68 km fairway between **Świnoujście and Szczecin** is 10.5 m on nearly its entire length. This is sufficient for safe navigation of vessels with draught of 9.15 m.

If **the port of Szczecin** is to maintain its competitive position developed over the years, the dredging of the fairway is a must. The investment should significantly improve accessibility and competitiveness of the port, open it to larger cargo flows and significantly improve the port's cargo throughput.

Dredging of the fairway promotes further development of **the Szczecin and Świnoujście port complex** and enhances economic attractiveness of the ports and the entire region. This investment may contribute to creating more than 5 thousand jobs.

Investment projects currently implemented in the port of Szczecin are based on the assumption that the fairway is dredged in the nearest future. In **the port of Szczecin**, the quays, which are newly built or modernized by **the Szczecin and Świnoujście Seaports Authority**, enable handling vessels with larger draughts.

The new potential can be utilised after dredging the fairway to **12.5 m**.

The dredging of the fairway **to 12.5 m all the way to Szczecin** is going to be implemented by **the Maritime Office of Szczecin using EU funding**. The project is expected **to be completed in 2022**.



Dla Szczecina  
**12,5 m**





## Envoirement friendly ports

**The ports of Szczecin and Świnoujście** are a good example of coexistence involving the natural environment and industrial facilities.

It is nothing uncommon to see eagles hovering over ships or sitting high in trees. They can be seen in the port, along the waterway or in close vicinity of the port and industrial installations.

Ships approaching the port of Szczecin may also encounter herons wandering in the waterway bank bulrush.

It is just one of numerous examples that port industries in Szczecin and Świnoujście, stimulated and guided by environmental initiatives undertaken by **the Ports Authority**, ensure safe and environmentally friendly operation of port facilities.



## An early oil spillage detection system

In the port of **Szczecin**, an early oil spillage detection system was installed in 2015. There were two locations chosen for the installation of **Remote Optical Watcher (ROW)** sensors in the port.

One sensor is installed in **the Dębicki Channel** and another in **the Kaszubski Basin**. The system uses oil fluorescence to detect anything from marine diesel to vegetable oil, and alert a dedicated computer system. Rescue Teams in the Port **are notified about the leakage**.

They are responsible for handling the oil spill to and protecting against further pollution. The locations selected for the ROW are places of previous incidents and the port wanted to be able to provide an early response **to avoid the worst-case scenario**. Selected areas are the most important areas in terms of vessel traffic and cargo handling, especially petroleum oil.

## Cleaner ports

Various facilities established and maintained by **the Ports Authority** have undergone changes aimed at improving the status of the environment in their immediate vicinity, Oder Estuary, and **the Baltic Sea**.

Since 2004, both ports have operated a ship waste reception system developed to meet international

standards. The system provides for collecting of solid and liquid oily waste, sewage, as well as solid waste and exhaust gas cleaning residues. After paying the tonnage fee, ships calling at **the ports of Szczecin and Świnoujście** may discharge certain types of waste generated during their last voyage to port reception facilities without incurring any additional cost.

Since 2012, in **ports of Szczecin and Świnoujście**, noise generated by port operations has been measured and monitored. Statistical surveys have been performed by a certificated laboratory. Dust and other emissions caused by the port are kept within limits set by environmental regulations.

## Unexpected events

**The ports of Szczecin and Świnoujście** are well prepared to face any unexpected events or accidents. **The Port Rescue Team**, adequately equipped and trained, is always ready to respond to emergency situations, such as oil spills and other incidents, including potential pollution from hazardous cargo. The ports are prepared to cooperate with other parties included in the regional emergency co-ordination system.

## Wastewater treatment plan

One of initiatives improving the natural environment in the port was the establishing of **Międzyodrze**, a **Water Law** company dealing with wastewater treatment.

This non-profit organization is responsible for implementing procedures under the environmental policy in accordance with **the IMO's MARPOL convention** and recommendations included in **the Helsinki Convention**.

The main activity includes reception and disposal of wastewater in a modern wastewater treatment plant, which consists of the following:

- ▶ mechanical and biological facilities with a daily throughput of **3,200 m³** for collecting and processing of sewage from the port and septic sludge from ships;
- ▶ reception and treatment facilities for ship generated waste ensure oily water separation and removal of residues from such cargo as coal, ore, grain, phosphates and apatite, and wash water from holds.

**The Wastewater Treatment Plant** has a reception quay for barges of up to 500 m³ and a reception station for tank trucks. The plant provides storage space of 410 m³ for oily water and 150 m³ for slop oil. While responding to growing



demands of the market and clients, the company implemented the Integrated Management System according to **ISO 9001** and **ISO 14001**, and was certified to confirm compliance with standards regarding collection, treatment and disposal of sanitary sewage, oily water, waste oil and wastewater from washing holds.

## Testing of the natural environment

Another key component of **the Seaports Authority's** environmental policy is its **Work Environment Laboratory**. **The Laboratory** provides permanent monitoring of the quality of wastewater and rainwater discharged to the environment, as well as the quality of water in port basins, bottom sediments and soils in the ports. The Laboratory is accredited and meets **international ISO/IEC 17025 standards**.

## The integrated management system

**The Szczecin and Świnoujście Seaports Authority** received a certificate of the Integrated Management System made to **ISO 9001:2008** and **14001:2004** and is committed to continuous improvement of its business operation and impact on the environment. **The Environment Management System** reflects the care of the company about the proper use of the environment while reducing pollution. The system also ensures that effects of the company's business activity are in line with its environmental policy, environmental goals and approved targets set by the policy.



## Safety and security

Priorities of **the Seaports Authority** include safety and security. The port complex implemented **ISPS** procedures and gained relevant certification for designated port facilities, as scheduled by **IMO**, including:

- ▶ Drobница Port Szczecin PLSZZ – 0004
- ▶ Bulk Cargo Port Szczecin PLSZZ-0003
- ▶ HUK-SNOP PLSZZ – 0006
- ▶ Ferry Terminal Świnoujście PLSWI – 0008
- ▶ Świnoujście Commercial Port PLSWI – 0005
- ▶ Władysława IV Quay in Świnoujście PLSWI– 0003

**The ports of Szczecin and Świnoujście** completed the **ISPS** compliance procedure **in July 2004**.

Both ports implemented stringent security standards according to the security regime established by EU and national legislation.

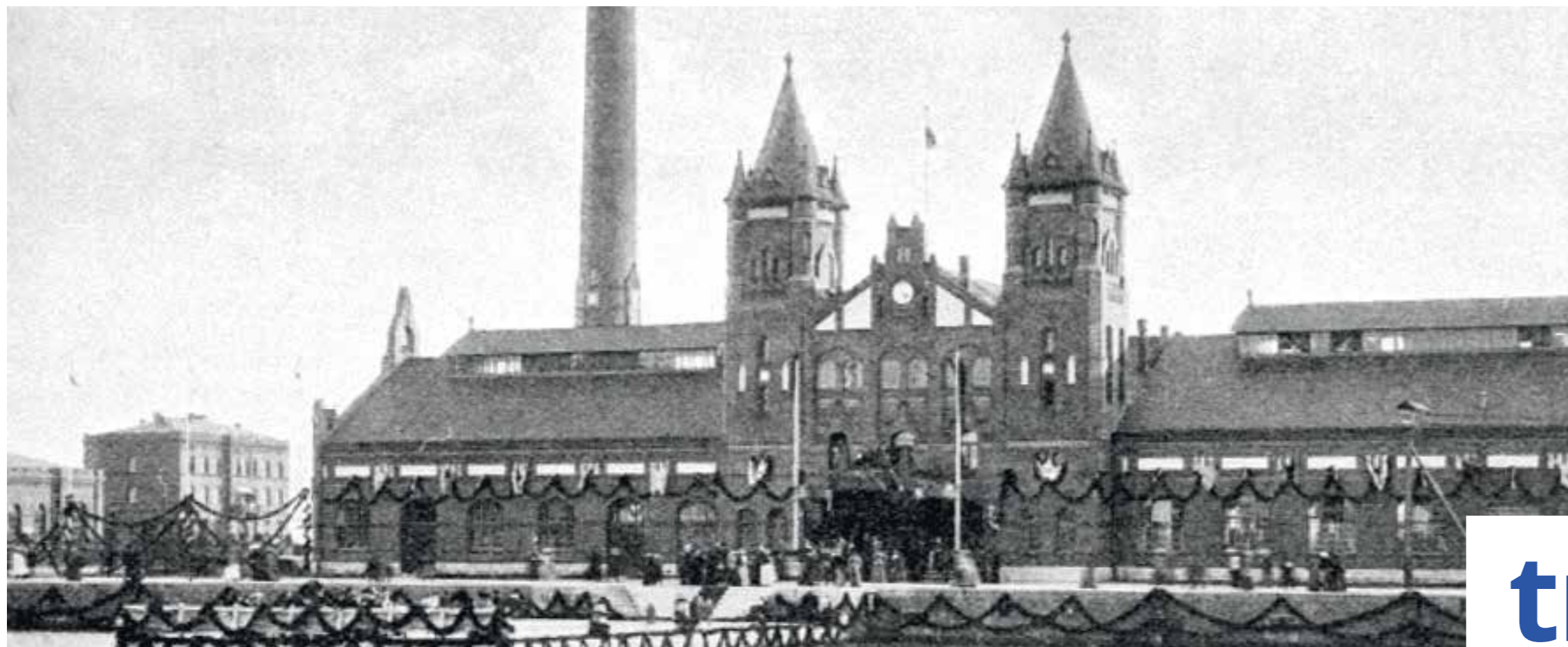
The standards are defined in Regulation (EC) No. 725/2004 of the European Parliament and the Council of 31st March 2004 on enhancing ship and port facility security, Directive 2005/65/EC of the European Parliament and of Council of 26th October 2005 on enhancing port security, and National Law on shipping and ports industry security of 4th September 2008.

Polish ports are traditionally **well prepared** to maintain high security standards, as the security infrastructure was already in place before the recent global adoption of the **ISPS Code** (contrary to most Western countries where ports were usually more vulnerable).

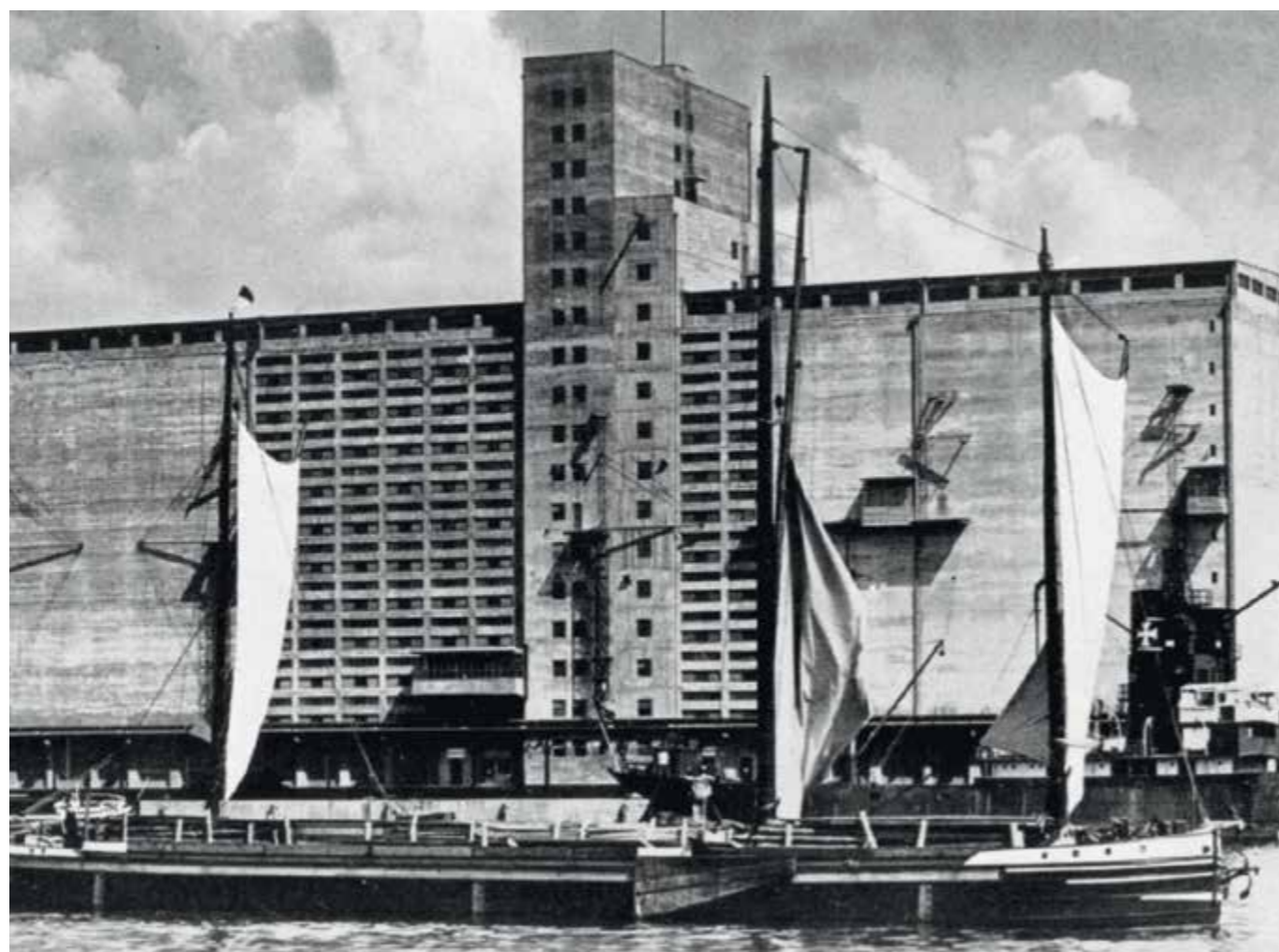
It is worth mentioning that **the ports of Szczecin and Świnoujście** gained necessary experience in safety and security procedures applicable to demanding and complex cargo handling and logistic support operations, such as transfer of military equipment and troops.

Similarly, the transshipment of various hazardous cargo, including explosives and nuclear materials, helped **the port of Szczecin** to develop its security potential.





# Experience and tradition





Today, **the ports of Szczecin and Świnoujście** comprise one of **the largest** and most universal port complexes **on the Baltic Sea**.

**Szczecin and Świnoujście** enjoy long tradition of port operation. A boat dating back to the 8th century found at the foot of the castle hill in **Szczecin** is a tangible evidence of the above. At that time, on the hill, a Slavic settlement was established, later developed to a stronghold which already in the 10th c. operated a river port.

An important development in the history of the whole **Pomerania Region** was the period of the **Dynasty of Gryffits** which emerged in the 12th c. They had a strong interest in developing contacts with their immediate and further neighbours. City charters assigned to Szczecin and a number of other towns in the region, coupled with shipping and fishing privileges as well as storage rights, was a good example that rulers understood benefits of a well-organized maritime sector.

A major development in the history of the city and the port was **Szczecin's** accession to **the League of Hanseatic Cities in 1278**.

In the mid 17th c., Western Pomerania was divided between Sweden and Brandenburg. Szczecin, together with the Oder estuary, became Swedish. After the North War, Szczecin was purchased by a Prussian king, but the Penne estuary remained Swedish for nearly another 100 years until 1815. It was extremely important for the port, since Prussian authorities had to start building a port on the estuary of the Świna River in the mid 18th c. In just several years, a small village on the estuary changed into a rapidly growing port and town. The latter was awarded a city charter in 1765.

After the Vienna Congress, although ruled by the Prussian State, **Szczecin became a major port for Poland**. The port of Szczecin thrived in **1845-1870**. The growth was the result of an economic upswing in Europe at that time and the international trade driven by an increasingly popular idea of economic liberalism. In 1843, the first railway line **linking Szczecin and Berlin** was established.

Several years later, authorities waived customs duties which further boosted the attractiveness of the port. In the 19th c., Szczecin became one of the most important German industrial centres on the sea. In the city and its vicinity, dynamic growth was recorded by shipyard industry, machine engineering, as well as steel, cement and paper production. The concentration of industry and its growing demand for raw materials made **the port of Szczecin** an important centre for imports and exports.

Later, regulation of **the Odra River**, establishment of a navigation route to Berlin, dredging of **the Szczecin-Świnoujście fairway** and extension of the port of Świnoujście played an important role in **the development of Szczecin and Świnoujście** seaports.

After the First World War, when the geopolitical situation changed in Europe and the Polish State was restored, the port of Szczecin lost its importance to ports of Gdańsk and Gdynia. Shortly before the Second World War, the role of the Szczecin seaport grew again in result of German plans to develop an important military port. At that time, the authorities modernised the railway line and purchased modern cranes. During WWII, intensive air raids of the Allied Forces nearly completely destroyed the port of Szczecin. Major damage was done to quays, warehouses, cranes, and vessels operated in the port. The fairway between Świnoujście and Szczecin ceased to be navigable due to wrecked ships, and damaged port and military equipment.

The first vessel to visit Szczecin after WWII was s/s **'Posejdon'** which called at the port on 4th April 1946. It brought 800 migrants on its board. On 17th June 1946, Szczecin welcomed the first merchant vessel. It was a Swedish ship with cellulose. Shortly after the war, the port of Szczecin was converted to a transshipment base of the Soviet Army which significantly delayed the rebuilding of the port. On 1st January 1950, the state-owned Szczecin Seaport Authority was established.

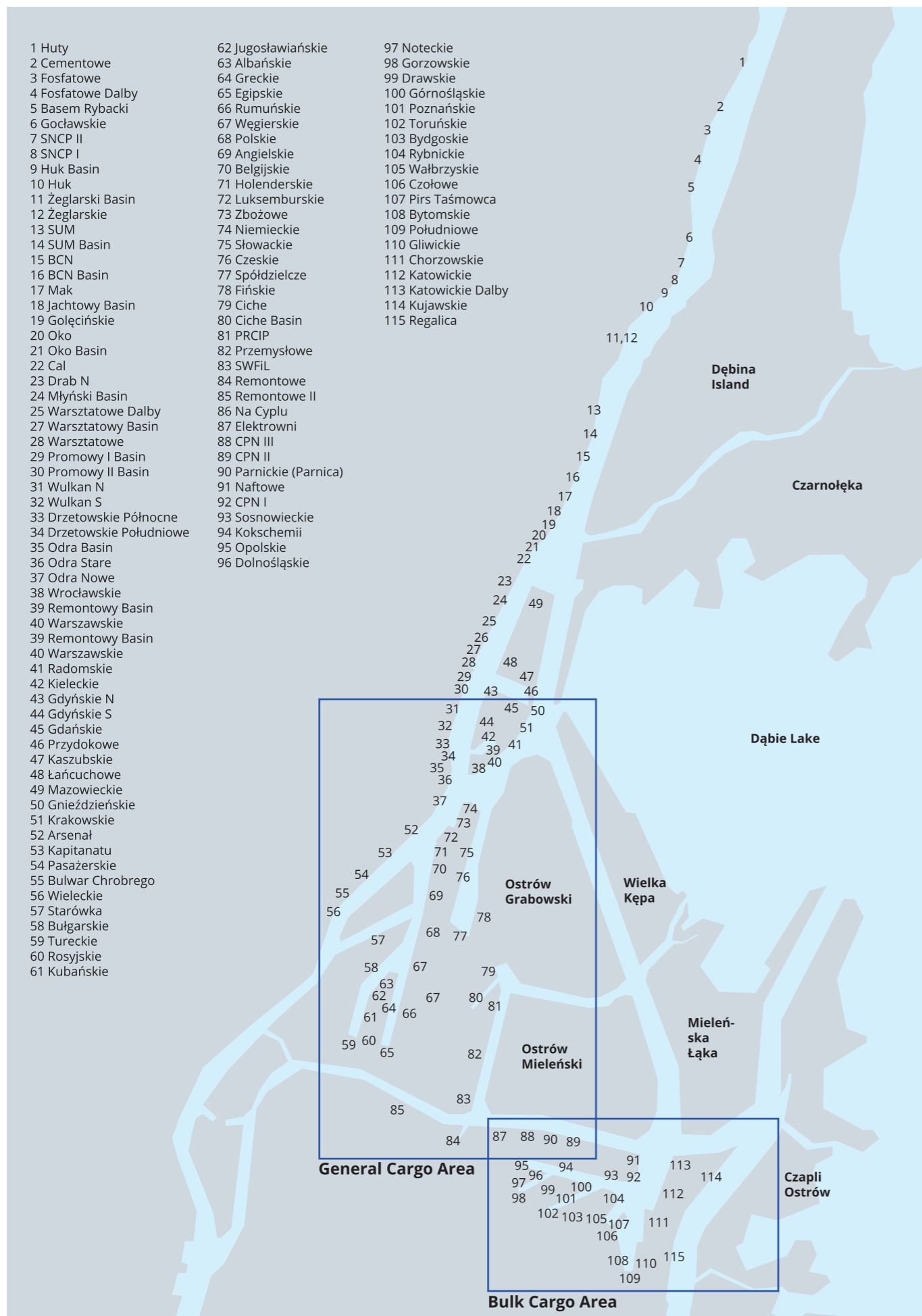
The rebuilding of the port became one of major objectives of the new Polish administration in Szczecin. Already in 1951, a conveyor belt for loading coal started operating. It was one of the then most modern constructions of this type in Europe. In parallel, the port built a tippler for railroad cars. In 1963, **the Szczecin Seaport** started the development of a coal base.

According to the then national economic strategy, **the ports of Szczecin and Świnoujście** specialised in handling dry bulk cargo, mainly coal, and transit cargo. The 1960s were very important for the development of **the port of Świnoujście**. At that time, Świnoujście developed a cargo handling and storage base for imported bulk cargo. A coal base opened in the late 1960s. Then, the port restored the operation of a ferry terminal providing services between Świnoujście and Ystad. Later chemicals and ore handling facilities were established respectively in 1978 and 1986. In 1967-1972, **the Szczecin Seaport** operated over 60 thousand square meters of open air storage.

A real breakthrough for the ports of **Szczecin and Świnoujście** was 1958 when the fairway linking the two ports was dredged to 9.6 m. The 1990s were marked by political and economic changes. Opening of the Polish economy to the world was one of major success factors for the ports. Today, **the ports of Szczecin and Świnoujście** comprise one of the largest and most universal port complexes **on the Baltic Sea**. We are proud of our beautiful, however difficult and complex past, but at the same time we look to the future **with much faith and optimism**.









## Port particulars

### ► Location:

The Port of Szczecin is located 53°25`N, 14°33`E at the mouth of the River Odra about 65 km from the open sea. The Port of Świnoujście is located 53°55`N, 14°15`E on the Wolin Island at the entrance to the Świna Channel leading to the Szczecin Firth and at the mouth of the River Odra.

### ► Approach:

Świnoujście: The navigation channel into Świnoujście is 32 Nm long, 180 to 200 m wide and 14.5 m deep. The port entrance is sheltered by concrete breakwaters. Szczecin: Located 67 km from the open sea along a 100 m wide channel. Maximum draught is 9.15 m at the normal water level. Vessels over 200 m in length and 9.0 m draught may navigate only by day when visibility is not less than two nautical miles.

### ► Anchorage:

Max. draught at anchorages is as follows: 1A – 7.0 m; 1B – 6.0 m; 2A – 9.5 m; 2B – 11.0 m; Kwarantannowe – 11.0 m; 3 – 13.2 m.

### ► Arrival:

Documentation required on arrival: vessel`s certificate, international measurement certificate, safety certificates, Marpol certificate, financial guarantee certificate, ISPS certificate, cargo manifest, crew list, passenger list.

### ► Authority:

#### **Szczecin and Świnoujście Seaports Authority**

ul. Bytomska 7 • 70-603 Szczecin • Tel: + 48 91 430 82 21 • Fax: + 48 91 462 34 12

e-mail: info@port.szczecin.pl • www.port.szczecin.pl

#### **Maritime Office in Szczecin**

pl. Batorego 4 • 70-207 Szczecin, Poland • Tel: +48 91 440 34 85 • Fax +48 91 434 46 56

e-mail: sekretariat@ums.gov.pl

#### **Szczecin Harbour Master`s Office**

ul. Jana z Kolna 9 • 71-603 Szczecin, Poland • Tel: + 48 91 440 33 84, 433 06 97 (VTMS) • Fax: + 48 91 434 39 84, 488 12 89 (VTMS)

e-mail: szczecintraffic@ums.gov.pl

#### **Świnoujście Harbour Master`s Office**

ul. Wybrzeże Władysława IV 7 • 72-600 Świnoujście, Poland • Tel: + 48 91 321 62 03 (VTMS) • Fax: + 48 91 440 35 89 (VTMS)

e-mail: swinoujscietraffic@ums.gov.pl

### ► Berthing:

The ports of Szczecin and Świnoujście provide 11 km and 3 km of berths respectively and cargo handling services.

### ► Airport:

Szczecin-Goleniow Airport is 45 km away from Szczecin. Berlin`s Tegel and Schonefeld Airports, with world-wide connections, are 180 km by motorway.

### ► Bunkers:

Fuel available from onshore installations or by bunker barges. Lubricants delivered by truck.

### ► Cranes:

Over 150 cranes in the two ports from 6 to 200 tons.

### ► Customs:

Szczecin: ul. Bytomska 9, 70-603 Szczecin, Poland • Tel: +48 668 527 389 (Dispatcher), +48 735 972 176, + 48 604 297 070, + 48 91 430 89 15 • Fax +48 91 430 87 13  
e-mail: oc.lasztownia@szcz.mofnet.gov.pl ; customs and trade declarations: PL421030@szcz.mofnet.gov.pl  
Świnoujście: ul. Dworcowa 1, 72-602 Świnoujście • Tel: +48 660 599 885, +48 660 599 912, + 48 660 599 908 • Fax 91 327 72 14 • e-mail: oc.swinoujscie@szcz.mofnet.gov.pl

### ► Dispatcher`s office:

Open 24h a day. Tel: +48 91 430 84 46, +48 91 462 41 52, Fax: +48 91 462 46 34, e-mail: dyspozytor@port.szczecin.pl

### ► Emergency numbers:

Police: 997 • Fire: 998 • Ambulance: 999

#### **Port`s Rescue and Security Service**

ul. Bytomska • 70-603 Szczecin, Poland • Tel: +48 91 430 82 55 Tel: +48 91 430 83 55, 430 84 55 (fire, emergency situations) Fax: +48 91 462 41 12 • e-mail: psr@port.szczecin.pl

### ► Isps officer:

#### **PFS Officers Szczecin (ISPS):**

Tel: +48 91 430 81 00 • mob. +48 695 380 614 • e-mail: m.andrzejewska@port.szczecin.pl , isps@port.szczecin.pl  
Tel: +48 91 430 82 35 • mob. + 48 691 030 721 • e-mail: j.gadomski@port.szczecin.pl  
Tel: +48 91 430 89 37 • mob.: +48 502 691 162 • e-mail: a.pawlak@port.szczecin.pl

#### **PFS Officers Świnoujście (ISPS):**

Tel: +48 91 372 72 50 • +48 605 073 281 • e-mail: b.przybylski@port.szczecin.pl  
Tel: +48 91 322 61 83 • +48 691 442 208 • e-mail: gbajerski@sft.pl

#### **Maritime search and rescue service:**

ul. Wybrzeże Władysława IV 7 • 72-600 Świnoujście, Poland • Tel: +48 91 321 49 17 • Fax: +48 91 321 59 29  
e-mail: polratok2@polratok.com.pl • Channel 16 VHF  
**Border sanitary and epidemiologic station in Szczecin**  
Al. Wojska Polskiego 160 • 70-481 Szczecin, Poland  
Tel: +48 91 462 43 18 • Fax: +48 91 462 32 71  
e-mail: gsse.szczecin@pis.gov.pl

#### **Border sanitary and epidemiologic station in Świnoujście**

ul. Wybrzeże Władysława IV 7 • 72-600 Świnoujście, Poland • Tel: +48 91 321 20 85 • Fax: +48 91 321 20 85  
e-mail: gsse.swinoujscie@pis.gov.pl

### ► Environment:

Pollution of harbour waters, land and facilities is prohibited. In the event of pollution, offenders or users are responsible for its immediate removal or removal by the time determined by the Harbour Master`s Office, as well as to cover the removal cost and any third party claims that may arise.

- ▶ **Handling equipment:**  
Over 500 pieces of equipment, including fork-lift trucks, top lifters and reach stackers. Equipment hire available.
- ▶ **Hazardous cargo:**  
Facilities available for handling and storage.
- ▶ **Medical aid:**  
Available.
- ▶ **Mooring:**  
Use of mooring services is compulsory. Boatmen to be ordered through ship`s agent.
- ▶ **Passenger services:**  
Unity Line, Polish Baltic Shipping Company, Euroafrica and TT-Line operate passenger ferry services from Świnoujście to Sweden. Cruise ships` facilities available in both ports.
- ▶ **Pilotage:**  
Compulsory for vessels of 60 m in length or more, vessels carrying dangerous cargo, passenger vessels and vessels that pose hazard to navigation.
- ▶ **Radio:**  
Reporting is compulsory for vessels of more than 20 metres in length, vessels carrying dangerous cargo, passenger vessels and those that are a hazard to navigation. Vessels should report to VTS Świnoujście Channel 12 VHF and to VTS Szczecin Channel 69 VHF.
- ▶ **Railways:**  
All quays in both ports are rail linked with connections to the mainline systems of Poland and Europe.
- ▶ **Roads:**  
Szczecin: Easy access to road no 10 leading all outside destinations including highway A6 connected with European highway system. Świnoujście: easy access to road no. 3 linking Świnoujście with Polish road networks.
- ▶ **Ro-ro facilities:**  
Szczecin: Three ramps at Czeskie, Fińskie and Chorzowskie Quays. Świnoujście: Six ro-ro berths at Ferry Terminal Świnoujście.

- ▶ **Seamen's mission:**  
The Stella Maris Club, runs by Seafarers` Priesthood, offers leisure facilities.
- ▶ **Shiprepair:**  
All kind of ship repair and dry docking services are available in both ports
- ▶ **Storage:**  
The two ports offer a total of 860,000 square metres of open storage for general cargo, timber and bulk commodities plus over 230,000 square metres of covered storage as well as 175,000 t of silo capacity for grain products.
- ▶ **Tides:**  
Szczecin and Świnoujście are not tidal ports.
- ▶ **Towage:**  
Generally compulsory for vessels over 90 m in length. The number of tug boats is specified by the port regulations. The harbour master may exempt vessels from using tugs, or allow them to use fewer tug boats, if they are fitted with bow thrusters or similar devices.
- Vessels limitation:**
  - ▶ Świnoujście: 270 m length and 13.5 m draught provided conditions determined by Port Regulations are met.
  - Szczecin: 215 m in length and 9.15 m in draught. Draught limits for ships over 160 m LOA calling at the Port of Szczecin are shown in the table below. Entrance of larger vessels is subject to Harbour Master`s approval.
- ▶ **Water:**  
Fresh water is supplied from shore hydrants or by road tankers.
- ▶ **Weather:**  
Szczecin and Świnoujście are usually ice free all year round. The climate is temperate. Only prolonged and severe frost periods may result in ice formation. In such a case, the approach channel and port basins are kept passable by icebreakers.
- Working hours:**
  - ▶ three shifts, Monday to Friday, 06:00 to 14:00, 14:00 to 22:00 and 22:00 to 06:00. Overtime working available on request, from Friday 22:00 to Sunday 22:00 and on public holidays.

Maximum draught in fresh water (metres)							
Overall length (metres)	Maximum breadth (metres)						
	to 25.00	25.01-26.00	26.01-27.00	27.01-28.00	28.01-29.00	29.01-30.00	30.01-31.00
	Maximum draught in fresh water (metres)						
160-169	9.15-9.06	9.15-9.03	9.15-9.00	9.15-8.98	9.15-8.95	9.15-8.92	9.15-8.90
170-179	9.05-8.93	9.02-8.88	8.99-8.83	8.96-8.78	8.93-8.73	8.90-8.68	8.87-8.63
180-189	8.91-8.73	8.86-8.68	8.81-8.63	8.76-8.58	8.71-8.53	8.66-8.48	8.61-8.43
190-199	8.72-8.58	8.67-8.53	8.62-8.48	8.57-8.43	8.52-8.38	8.47-8.33	8.42-8.28
200-209	8.57-8.48	8.52-8.43	8.47-8.38	8.42-8.33	8.37-8.27	8.32-8.22	8.37-8.17
210-215	8.46-8.40	8.41-8.35	8.36-8.30	8.31-8.25	8.25-8.20	8.20-8.15	8.15-8.10

Stevedoring services companies



Alfa Terminal Szczecin Sp. z o.o.



**Address:** ul. Nad Odrą 10, 71-833 Szczecin  
**Tel:** + 48 91 42 47 893  
**Mobile:** +48 607 910558  
**E-mail:** a.czyzewski@alfaterminal.pl  
**Website:** www.alfaterminal.pl

The company provides bulk cargo storage and handling services, break bulk and methanol. 5,000 sq. m of roofed storage and 15,000 sq. m of open storage in concrete bunkers, 25,000 sq. m of paved second line storage yards and two methanol holders of 14,250 cu. m each. Two gantry cranes, of 2,000 t per day each. One gantry crane of 2,500 t per day and one of 5000 t. Two methanol discharging arms of 1000 t per hour. Belt conveyors system vessel to/from warehouse of 5000 t per day. Rail wagons discharging bunker. 500 - 1000 kg bagging machine. Truck and rail weigh bridges. 48 ha of total area. **Quay** – Kra 1: 420 m long and 7.9-8.0 m in draft permitted. Three rail tracks alongside. Total rail network of 11.5 km.

Andreas Sp. z o.o.



**Address:** ul. Nad Odrą 72, 71-820 Szczecin  
**Tel/Fax:** +48 91 453 86 91, 453 81 67, 421 59 10  
**Email:** snop@andreas.szczecin.pl  
**Website:** www.andreas.szczecin.pl

Andreas is a sea transhipment terminal of 32,000 t dedicated for grain and animal feed as well as 25,000 t fertilisers, of which 11,500 t for fertilisers in bulk. The terminal has been fitted with modern transhipment equipment for ships, including automatic conveyor systems of 250 t/h and or vehicles operating at 150 t/hour. The company has a 340 m quay and 3 railway sidings of total length 900 m. **Quay:** Snop: 340 m in length, 7.0-7.1 m in width. Handles ships of up to 8,000 DWT. Highly efficient transport and trans-shipment equipment that enables performing several warehouse operations in parallel at 250 t/h.

Baltchem S.A. Zakłady Chemiczne w Szczecinie



**Address:** ul. Księdza Stanisława Kujota 9, 70-605 Szczecin  
**Tel:** +48 91 462 43 42  
**Fax:** +48 91 462 43 51  
**E-mail:** biuro@baltchem.com.pl  
**Website:** www.baltchem.com.pl

Baltchem S.A. provides storage and reloading services of liquid products, such as:  
- fertilizer,  
- crude vegetable oil,  
- petroleum products (gasoline, diesel, MDO, etc.),  
- methanol and ethanol,  
- other chemicals.  
Products of 1st, 3rd and non-classified fire hazard may be stored in Tax Warehouse, Custom Warehouse, Place of Temporary Storage or in no custom status tanks. Parameters of ships handled at terminal in Szczecin: LOA – 130.00 m  
Beam – 22.00 m  
Draft – 6.5 m  
Total storage capacity: 54.000 cu. m, own railway sidings; ship, road, rail and barges access; truck and rail weigh bridges. Parameters of ships handled at terminal in Świnoujście (up to 40,000 DWT): LOA – 195.00 m  
Draft – 11.60 m (up to 57,600 DWT)  
Total storage capacity: 72,000 cu. m; ships, barges and road access.

Bulk Cargo  
Port Szczecin Sp. z o.o.



**Address:** ul. Gdańska 21, 70-661 Szczecin  
**Tel:** +48 91 430 73 73, 430 71 12  
**Fax:** +48 91 462 35 29  
**E-mail:** biuro@bulkcargo.com.pl  
**Website:** www.bulkcargo.com.pl

Bulk Cargo – Port Szczecin Ltd. - the most significant and universal port company in Szczecin provides high quality bulk, liquid and general cargo handling and logistics services. The company offers 70,000 sq. m of warehouse space, 500,000 sq. m of open storage, as well as 18,000 cu. m of tanks for liquid cargo. The company operates three port handling areas CARGO-PORT, COAL – PORT, and MAS – PORT, has relevant certificates of ISO 9001:2008 and GMP+B3.  
**Quays:**  
**Katowickie:** 434 m in length, permitted draft of 9.15 m. Three shore cranes of 16 t each and two 10 t cranes. Open cargo boxes and flat storage space. Terminal for reloading sulphuric acid.  
**Chorzowskie:** 290 m in length, permitted draft of 9.15 m. Three shore cranes of 16 t each. Weighing scales for railway

cars. Open cargo boxes and flat storage space. Ro-ro platform.  
**Gliwickie:** 260 m in length, permitted draft of 9.15 m. Three shore cranes of 16 t each. Covered and open cargo boxes and open flat storage space.

**Regalica:** 210 m in length, permitted draft of 6.4 m. Storage space and warehouses for general cargo. Weighing scale for trucks.  
**Bytomskie:** 343 m in length, permitted draft of 9.15 m. Two shore cranes of 10 t each. Covered and open cargo boxes and open flat storage space  
**Pirs:** 188 m in length, permitted draft of 9.15 m. Conveyors for coal and rail car tipper of 1,000 t/h. Open storage space.  
**Wałbrzyskie:** 255 m in length, permitted draft of 8.6 m. Three shore cranes of 10 t each. Open cargo boxes and flat storage space. Terminal for reloading and storage of liquid cargo.  
**Górnośląskie:** 282 m in length, permitted draft of 9.15 m. Three shore cranes of 45 t, 16 t and 10 t. Storage space (boxes and flat space) and warehouses for bulk and general cargo  
**Noteckie:** 283 m in length, permitted draft of 5.5 m. Storage space and warehouses for bulk and general cargo. Weighing scale for trucks.

**Parnica:** 320 m in length, permitted draft of 7.4 m. Two shore cranes of 8 t each. Covered cargo boxes and flat storage space. Terminal for reloading and storage of tar. Weighing scale for trucks  
**Huk:** 268 m in length, permitted draft of 7.2 m, two shore cranes of 10 t and 8 t. storage space dedicated for bulk and break bulk goods. Weighing scales for railcars and trucks.

**Other equipment:**

Mobile cranes 9	Conveyors 20
Front loaders 18	Forklifts 40
Heavy trucks 10	Heavy forklifts 7
Bulldozers 3	Trailers 22

Cemex Polska Sp. z o.o.



Logistic Terminal Szczecin  
**Address:** ul. Fabryczna 1, 71-827 Szczecin  
**Tel:** +48 91 831 20 22  
**Fax:** +48 91 45 38 460  
**E-mail:** cemexpolska@cemex.pl  
**Website:** www.cemex.pl

The terminal is equipped with a cement packaging system including regular and big bags, as well as a post for automatic cars loading. There are also 2 silos 400 t each, 2 silos 1,800 t each and one silo of 8,500 t; installation for loading loose cement, three cranes of 5 t, and storage yard of 10,000 sq. m.

**Quays:**

Kra II: 108.6 m long and 6.2 m deep  
Kra III: 34.1 m long and 5.9 m deep

Centrum Logistyczne  
Gryf Sp. z o.o.



**Address:** ul. Władysława IV 1, 70-651 Szczecin  
**Tel:** +48 91 810 12 00  
**Fax:** +48 91 810 12 03  
**E-mail:** info@chlodniagryf.pl  
**Website:** www.chlodniagryf.pl

Centrum Logistyczne Gryf Sp. z o.o. in Szczecin provides services related to reloading and storage of frozen sea products, port services, logistics and forwarding services, customs agency services, and rental of storage yards and offices. The company has the most modern cold stores in the region, with the capacity of 13,000 tons, located in the Szczecin Port at the Bułgarskie quay. The location of the cold storage makes it possible to work with ships of permissible draft of up to 8.7 m, as well as to handle loads delivered by trucks and in containers. Centrum Logistyczne Gryf Sp. z o.o. offers optimum organization of reloading works and provides port forwarding, transport agency, and customs agency services for goods entrusted by customers. It performs its services using the

latest solutions in the warehousing sector, modern materials handling equipment, and port cranes. Goods are stored on modern high storage mobile shelving and the logistics, forwarding, and customs agency services are based on modern information technology solutions. With the aim to ensure high quality of its services, Centrum Logistyczne Gryf Sp. z o.o. has implemented and certified quality management systems compliant with such standards as IFS Logistics, ISO22000, ISO9001, ASC, and MSC.

Cronimet Pl Sp. z o.o.



**Address:** ul. Księdza Stanisława Kujota 15, 70-605 Szczecin  
**Tel:** +48 91 430 89 16  
**Fax:** +48 91 430 89 13  
**E-mail:** szczecin@cronimet.pl  
**Website:** www.cronimet.com.pl

The Cronimet Quay at the Przemysłowy Canal handles ships of 120 m in length and 6.5 m in draught.

DB Port  
Szczecin Sp. z o.o.



**Address:** ul. Bytomska 14, 70-603 Szczecin  
**Tel:** +48 91 430 86 60, 430 77 70  
**Fax:** +48 91 462 47 79, 462 47 80  
**E-mail:** sekretariat@dbport.pl, marketing@dbport.pl  
**Website:** portszczecin.deutschebahn.com

The main activity of the company is cargo handling of containers and general cargo, especially steel products, non-ferrous metals, fertilizers in bulk, paper and wood pulp, project cargo, heavy loads and oversized goods, other cargo such as granites and unitized goods. With regards to the above division of cargo groups, DB PS offers to its clients 3 places of service:  
- Container Terminal, which was expanded in spring 2011 and in 2015 – loading, reloading, stuffing, stripping, transporting containers within the port area and other depots in Szczecin.  
- general cargo terminal (steel products, granites, non-ferrous metals such as aluminium, paper, wood pulp, etc.), project cargo.

The Company has implemented a HACCP food safety management system, along with GMP and GHP good practices. It intends to implement a safety system made to the ISO 27001 standard.

**Quays:**

**Starówka:** 180 m long and 4.7 deep.  
**Bułgarskie:** 1,247 m long and 6.7 to 8.7 m deep. Two 6.3 t cranes.  
**Other equipment:** fork-lift trucks 15.

Cronimet PL Sp. z o.o. has been dealing with wholesale purchase, sales and processing of alloy scrap metal, non-ferrous metals, tool steel, cemented carbides and scrap steel. Scrap metal is processed to become a batch which goes to a metallurgical furnace. Batches of scrap metal are delivered directly to steel mills, among others, by sea. The Szczecin-based terminal comprises:  
2 ha warehouse space, customs warehouse for temporary storage (AEO certified), railway siding, certified truck and railway car scales, radiation detectors, modern laboratory providing chemical composition analysis

- Free Duty Area offering reloading and cargo handling without the necessity to pay duty and taxes.

**Quays:**

**Czeskie:** 420 m long and 9.15 m deep. Cranes: two (100 t) self-propelled cranes, four 8-16 t portal cranes Ro-Ro ramp.  
**Słowackie:** 565 m long and 9.15 m deep. four cranes of 6 to 16 t.  
**Polskie:** 260 m long and 8.8 m deep. two cranes of 20/25t and 16t  
**Węgierskie:** 611.30 m long and 8.6 m deep, two cranes 3,2/6t, two cranes up to 6t, two cranes 8/16t  
**Rosyjskie:** 322 m long and 7.6 m deep. Duty Free Zone., 3 portal cranes up to 3 t  
**Fińskie:** 300 m long and 10,9 deep, 28 m ro-ro ramp. 2 STS cranes, 2 RTG cranes, large depot for containers, more than 150 reefer stations.  
**Other equipment:**  
Electric harbour cranes: 18  
Mobile cranes 6  
RTG cranes 4  
Gottwald mobile harbour 100 ton cranes 2  
Fork-lift trucks: SVETRUCK- 4, others- 45  
Roll-trailers 27  
Reachstackers 3  
STS cranes 2  
Terminal tractors: 24

Elewator Ewa Sp. z o.o.



**Address:** ul. Hryniewieckiego 21, 70-606 Szczecin  
**Tel:** +48 91 430 82 66  
**Fax:** +48 91 462 41 65  
**E-mail:** sekretariat@elewator-ewa.szczecin.pl  
**Website:** www.elewator-ewa.szczecin.pl

The company operates modern flat storage with capacity of 45,000 tons located at Słowackie Quay. The silo is road and rail linked with computerized weighbridges. Loading or unloading of vessels is performed with a rate of 8,000 tons per day for grain and 7,000 tons per day for feed.

**Quay:**

**Słowackie:** 230 m long, vessel draft up to 9.15 m. Hydraulic grab crane  
**Other equipment:**  
wheel loaders, bulldozers, moveable conveyors belts, automatic scales

Euro Terminal  
Real Estate Co. Ltd



**Address:** ul. Jana Śoltana 1, 72-602 Świnoujście  
**Tel:** +48 91 321 65 11  
**Fax:** +48 91 321 65 10  
**E-mail:** office@euro-terminal.com  
**Website:** www.euro-terminal.com

EURO TERMINAL REAL ESTATE Co. Ltd. is a multi-purpose terminal located in the port of Świnoujście, near the open sea, with an extensive infrastructure for handling and storing a wide range of cargo. Apart from refrigerated cargo, which a company's specialist area, it developed into a hub for forest products, breakbulk goods and project cargo.

Fast Terminals Sp. z o.o.



**Address:** ul. Bytomska 7, 70-603 Szczecin  
**Tel:** +48 914308598  
**Fax:** +48 914308187  
**E-mail:** fast@fastterminals.com.pl  
**Website:** www.fast-lines.com

Fosfan S.A.



**Address:** ul. Nad Odrą 44/65, 71-820 Szczecin  
**Tel:** + 48 91 44 55 600  
**Fax:** + 48 91 44 55 610  
**E-mail:** biuro@fosfan.pl  
**Website:** www.portnadodra.pl

Port Nad Odrą is a branch providing professional handling and storage services of bulk materials, aggregates and liquid

Terminal operates 46 hectares of Duty Free Zone. It offers 14.000 sq m of cold storage, 27,000 sq. m of warehouse space and 300,000 sq. m of paved open air storage.

There are two dock basins with the following quays:

**CPN:** 180 m long and 3.3 to 4.3 m deep.  
**Wyposażeniowe:** 200 m long and 4.4 to 4.8 m deep.  
**NOK:** 164 m long and 3.3 to 4.3 deep.  
**Zaopatrzeniowe:** 513 m long and 4.3 to 6.0 m deep.  
**Komunikacyjne:** 50 m long and 4.7 m deep.  
**Rybackie:** 120 m long and 5.0 m to 5.4 m deep.  
**Rozładunkowe:** 600 m long and 7.8 to 8.4 m deep.  
**TOP:** 171 m long and 4.0 to 7.2 m deep.  
**Remontowe:** 343 m long and 4.0 to 5.7 m deep.  
**Prób:** 56 m long and 5.3 m deep.  
**Other equipment:**  
Mobile cranes 2 (lifting capacity 64 and 84 tons)  
Reachstacker 1  
Forklifts 40 (lifting capacity 2 – 16 tons)  
Locomotives 1  
Tractors 2

Fast Terminals since 26 years provides storage and handling services for project cargo, unitized general cargo, semi products such as chemicals, wood pulp, timber, steel and also stuffing/stripping containers. A new open bulk terminal dedicated for all kinds of fertilizers, minerals or grain, fitted with modern, automatic conveyor systems of 200 t/h and 4 chambers with 8 000 mt storage capacity. Fast Terminals as a Fast Group member offers regular sailings to the UK and Ireland. Fast Terminals have 20,000 sq. m of warehouse space and 25,000 sq. m of open storage. The company is equipped with 4 mobile cranes from 40 t to 16 t and other specialist equipment.

**Quays:**  
**Holenderskie:** 160 m long and 8.0 m deep.  
**Belgijskie:** 240 m long and 9.0 m deep.  
**Angielskie:** 160 m long and 8.5 m deep.  
**Greckie:** 130 m long and 6.5 m deep.

chemicals. We have warehouses for bulk materials of 11,000 tons and storage space of 3,000 tons. Additionally, we can offer high-storage warehouses for 600 tons and outdoor storage sites of more than 3,000 m2. Storage of liquid chemicals is possible of up to 10,000 cu. m. Moreover, our Company has available investment area with the possibility of expanding its storage capacity.

**Quays:**  
**Fosfatowe:** 246 m long and 6.0 m deep. The handling capacity of loading conveyor is 2,000 mt per day.  
**Fosfatowe Dalby:** 185 m long and 6.0 m deep. Tankers can be loaded at 300 mt per hour.  
Individual railway side track for 150 carriages.

**Other equipment:**  
Loading / unloading equipment – 3 Shore cranes – 1  
Fork-lift trucks – 5 Diesel locomotives – 2

Orlen Paliwa Sp. z o.o.



**Address:** Widełka 869, 36-145 Widełka  
**E-mail:** zarzad.ornenpaliwa@ornen.pl  
**Liquefied Gas Terminal in Szczecin**  
**Address:** ul. Gdańska 34, 70-661 Szczecin  
**Tel:** +48 24 201 04 90  
**Fax:** +48 24 367 70 42  
**Website:** www.ornenpaliwa.com.pl

Sea LPG Terminal

Equipment at the sea LPG terminal includes three tanks of 1,500 cu. m each; one barge/vessel berth, three fully automated road tanker loading/unloading bays and two loading /unloading rail tankers bays.

There are two railway sidings with direct connection to main railways. There is also easy connection to the road network via the A6 motorway and the S3, S6 and S10 expedition roads. Depending on actual configuration, max. daily transshipment rate is 5,700 cu. m.

**Quay:**  
LPG Orlen Paliwa – CPN 3 – 274 m long, 7.5 m deep

OT Port Świnoujście SA



**Address:** ul. Bunkrowa 1, 72-602 Świnoujście  
**Tel:** +48 91 327 72 00, +48 91 327 74 10  
**Fax:** +48 91 321 52 92  
**E-mail:** info@otport.swinoujscie.pl  
**Website:** www.otport.swinoujscie.pl

OT Port Świnoujście SA is a part of OT Logistics Group. OT Logistics Group is a Polish company with over 70 years of experience. It is the largest port operator in Poland and on the southern Baltic, and the leader in the inland waterway transport from Kaliningrad, Russia to ports in Germany and the Netherlands. The OT Logistics Group comprises more than 20 companies providing freight, sea, rail, road and air forwarding services, cargo handling in ports and inland terminals as well as inland waterway transport.

OT Port Świnoujście SA operates in a sea port of universal nature. Basing on his long time experience, highly trained staff, and a wide range of handling installation and infrastructure can provide handling services for a wide range of bulk cargo as well as general cargo, both in exports and imports. The cooperation between companies belonging to the same OT Logistics capital group allows OT Port Świnoujście to provide a comprehensive offer including not only handling operations and shipping, but also railroad and barge shipments to the final receiver.

The customer is provided with an opportunity to simplify the logistic process by placing an order for complex service. The company provides its customers with following services:  
– dry bulk cargo handling including coal, coke, ore, biomass, forest products, aggregates, grain, fertilizer;

– general cargo handling including steel products, containers, big bags, pallets, project cargo structures,  
– heavy lifts up to 250 tons; warehousing and storage of goods and other services related to cargo and transport means. Total annual turnover reaches 12,000,000 mt of different kinds of materials.

**Quays:**  
**Portowców** – length: 245 m, max draft: 12.14 m, a Grain Terminal BTP – Groupe Bunge. Terminal is dedicated for handling and storage of goods for animal feed and cereals. There is also a barge channel (10.4 m in width and 6 m in depth). Terminal Portowcow is equipped with: 2 portal cranes SWL 16 mt each, 1 portal crane SWL 52 mt, 1 shiploader of 500 mt/h, 8 covered boxes of 5,800 cu. m, covered warehouse of 45,000 mt.

**Górników** – length: 330 m, max draft: 13.50 m, major cargo: coal, biomass, aggregate, heavy lifts, project cargo, containers both unloading and loading directions. Terminal Gornikow is equipped with: belt conveyor system of total length 7 km, connecting wagon tippers with storage area and vessels loader; 2 Liebherr mobile cranes LHM 500 SWL 140 mt each with max. discharging rate 25,000 mt/day (coal); loading device connected with belt conveyor system - loading rate up to 25,000 mt/day; 2 wagon tippers - discharging rate up to 400 wagons/day; wagon loading station - loading rate up to 10,000 mt / day; additional secondary quay with max. draft 4.50 m, length 115 m, equipped with 2 cranes SWL 10 mt each; storage area 120,000 m2 for coal, max. capacity 700,000 mt. area equipped with 6 stackers reclaimers connected with belt conveyor system; de-freezing station  
**Hutników** – length: 330 m, max. draft: 13.20 m, major cargo: coal, iron ore, aggregate, general cargo, containers for both unloading and loading directions. Directly, within outreach of gantry cranes, there is a 5,200 m2 concreted yard, with the capacity of 65,000 mt of iron ore, or 40,000 mt of aggregate. Terminal Hutników is equipped with: 4 rope gantry crane SWL: 25 mt; 4 rope gantry crane SWL: 40 mt; container gantry crane with capacity below spreader SWL: 68 mt and handling capacity 40 moves/h. Quay is also equipped with storage yards 80,000 sq. m, and 5,800 sq. m dry warehouse for a storage of general and bulk cargo.  
**Chemików** – length: 285 m, max draft: 13.20 m, major

cargoes are: biomass, iron ore, aggregate, with possibility of direct reloading with conveyor belt from vessel onto barge, yard, covered warehouse, trucks or wagons. Terminal Chemikow is equipped with: 2pcs, 4-rope gantry cranes SWL: 20 mt each, able to discharge PANAMAX size vessel with rate 20,000 mt/day; belt conveyor system, total length 2.5 km connected with covered warehouse, capacity

## Polski Koncern Naftowy SA

Terminal Paliw w Świnoujściu  
(Świnoujście Fuel Depot)



13,500 sq. m, able to store up to 100,000 mt of iron ore, or 40,000 mt of biomass; storage yard, total capacity 60,000 sq. m; additional secondary quay, length 137.5 m, draft 4.50 m, with 2 barge loaders, loading rate 180 mt/h each. DEZA Terminal – liquid tar-pitch reloading facility with tanks of 7,000 cu. m.

**Address:** ul. Bunkrowa 5, 72-602 Świnoujście  
**Tel:** +48 24 256 72 41  
**Fax:** +48 91 321 52 17  
**Website:** www.orlen.pl

The terminal offers transshipment of exported fuel oil.

**Quay** – CPN-2 Świnoujście:  
170 m long and 10.6 m deep.

## Polskie LNG SA



### Contact information:

#### Company Head Office

ul. Ku Morzu 1  
72-602 Świnoujście, Poland  
**E-mail:** sekretariat.swinoujście@polskielng.pl

#### Office in Warsaw

Jerozolimskie Business Park  
Aleje Jerozolimskie 146, budynek B  
02-305 Warszawa, Poland  
**Tel:** +48 22 589 84 00  
**Fax:** +48 22 589 84 01  
**E-mail:** sekretariat.warszawa@polskielng.pl

#### GAZ-SYSTEM S.A.

##### Spokesperson

**Tel:** +48 22 220 13 12  
**Tel. mob.** +48 885 263 260  
rzecznik@gaz-system.pl  
mariusz.kozlowski@gaz-system.pl

Polskie LNG S.A. is responsible for the operation and development of the Świnoujście-based liquefied natural gas terminal (LNG). The terminal is considered by the Polish government of strategic significance for the diversification of the gas supply.

The President Lech Kaczyński LNG Terminal enables to unload liquefied gas delivered by sea virtually from any corner of the world. Thus, it contributes to the enhancement of the Poland's energy security.

Processes at the LNG terminal in Świnoujście:  
-Unloading of LNG from gas carriers of 120,000 m3 to 217,000 m3  
-process storage of LNG in tanks of the total capacity 320,000 m3,  
-regasification of LNG to reach the nominal annual dispatch of 5 bn Nm3 (after extension, it is going to increase to 7.5 bn Nm3/year),  
-loading of LNG to tank trucks at three dedicated posts.

#### Services

Being the licenced operator of the regasification system, Polskie LNG S.A. provides regasification and additional services.

#### Regasification provided by Polskie LNG S.A.:

-long-term; for the LNG Terminal users whose annual gas delivery is equivalent to the average regasification capacity of at least 150 thou. m3 NG per hour. Under the long-term service, the LNG Terminal Operator provides continuous regasification all year round, except periods of planned maintenance and emergency downtime or limited operation as specified in the Terminal Code;  
-short-term; for at least 24h and several consecutive 24h periods in a given year.

The regasification service includes unloading of LNG from a gas carrier, process storage, regasification and delivery of gas to the exit point from the LNG Terminal. Additional services can be contracted by users requesting regasification. **Additional services include:**  
LNG re-loading to tank trucks, extended process storage and distributed contractual capacity.

## Szczecin Bulk Terminal Sp. z o.o.



**Address:** ul. Hryniewieckiego 26, 70-606 Szczecin  
**Tel:** +48 501 977 822, +48 91 430 82 73  
**E-mail:** office.sbt@sbtsszczecin.com  
**Website:** www.sbtsszczecin.com

Szczecin Bulk Terminal is located at the Zbożowe Quay in the Port of Szczecin. The construction of the terminal was modernized in 2016 and equipped with a modern fully automated silo handling equipment offering total capacity of 50,000 tons. It is the biggest grain silo in the port of Szczecin, which allows a multi-bulk handling in import and export relations. The terminal has a modern and fully equipped laboratory, which allows quick and accurate analyses on customer requests.

Additional services also include a shipping agency, fully integrated with the activity of the terminal. Szczecin Bulk Terminal is qualified at handling bulk agricultural commodities, mainly grains and meals. The terminal's quay handles vessels of up to 80,000 DWT. The terminal is controlled by automation program linked with computerized weighbridge equipped in two truck scales and bulk scales. Loading of vessels is performed at a maximum rate of 1,000 t/h by a mechanical system. Unloading of vessels is provided at a maximum 300 t/h by a pneumatic system. Two car intakes with maximum unloading rate of 300 t/h each. Three train intakes with maximum unloading rate of 300 t/h each. Separate train and trucks loading position with maximum loading rate of 300 t/h. Silos temperature system. All machinery produced according ATEX regulations and effective dust reduction.

#### Quay:

Zbożowe: 235 m long and 9.15 m deep. Combined ship loader/unloader.

Other equipment:

Pneumatic unloader in year 2018/2019

Wheel loaders

The company operates 2 grain silos: Warta, Basenowa. The WARTA silo handles grain, seeds and other agribulks. Total area of the WARTA silo is 8,500 t.

**Poznańskie Quay:** 122m long and 5.7 - 6.1 m deep. Loading and unloading facilities. Ship loaders 120 - 160 per hour. The silo has its own railway siding. The BASENOWA silo handles grain, seeds and other agribulks. Total area of the BASENOWA silo is 4,500 t. Ships are handled at rate of 80-120 t per hour.

**Bydgoskie Quay:** 120 m long and 5.7 m deep. Loading and unloading facilities.

## Szczecińskie Zakłady Zbożowo-Młynarskie PZZ SA



**Address:** ul. Basenowa 15-17, 70-660 Szczecin  
**Tel:** +48 91 462 33 22, +48 797 325 933  
**E-mail:** sekretariat@pzz-szczecin.com.pl  
**website:** www.pzz-szczecin.com.pl

## Terminal Promowy Świnoujście Sp. z o.o.



**Address:** ul. Nad Odrą 44/65, 71-820 Szczecin  
**Tel:** + 48 91 44 55 600  
**Fax:** + 48 91 44 55 610  
**E-mail:** biuro@fosfan.pl  
**Website:** www.portnadodra.pl

Terminal Promowy Świnoujście Sp. z o.o. operates a sea ferry terminal in the port of Świnoujście handling freight and passenger ferry traffic to and from Sweden. 90,000 sq.

m carpark. The terminal has a total capacity per day of 10,000 passengers, 1,500 cars, 1,500 trucks and 250 rail wagons, 25,000 tons.

#### Quays:

No. 1: 242 m long and 10.5 m deep. Ro-Ro ramp for cars and freight.

No. 2: 193 m long and 7.0 m deep. Ro-Ro ramp for cars and freight. Rail ferry link.

No. 3: 194 m long and 7.0 m deep. Ro-Ro ramp for cars and freight. Rail ferry link.

No. 4: 180 m long and 7.0 m deep. Ro-Ro ramp for cars and freight.

No. 5: 196 m long and 7.0 m deep. Ro-Ro ramp for cars and freight.

No. 6: 140 m long and 7.0 m deep. Ro-Ro ramp.

Other equipment:

Mafi tractors 4

Fork-lift trucks 2

## Service Companies



### Doker Port Sp. z o.o.



**Address:** ul. Bytomska 7, 70-603 Szczecin  
**Tel/Fax:** +48 91 430 82 86  
**E-mail:** doker@doker-port.szczecin.pl  
**Website:** www.doker-port.szczecin.pl

The company provides service of manpower for port operations and also repair port equipment and organizes training for workers.

### Infra-Port Sp. z o.o.



**Address:** ul. Bytomska 3-6, 70-603 Szczecin  
**Tel:** +48 91 430 82 56, 430 82 77  
**Fax:** +48 91 430 80 77

**E-mail:** biuro@infraport.pl  
**Website:** www.infraport.pl

Specialised in building and repair of quays, building roads, water and sewage systems, as well as power supply and telecommunication networks. Additionally, the company provides oily and solid waste collection from ships and supply of potable water.

### Project Żegluga Fairplay Towage Polska Sp. z o.o. Sp.k.



**Address:** ul. Celna 5, 81-337 Gdynia  
**Website:** www.fairplay-towage.com  
**Szczecin**  
**Office:** Plac Rodła 9, 70-419 Szczecin  
**Tel:** +48 91 852 27 20  
**E-mail:** szczecin@fairplay-towage.com  
Dispatcher 24 hrs:  
**Mob.** +48 605 073 225  
**E-mail:** szn@fairplay-towage.com  
**Świnoujście**  
**Office:** Wybrzeże Władysława IV 3, 72-600 Świnoujście  
**Tel:** +48 91 322 32 40  
**E-mail:** swinoujscie@fairplay-towage.com  
Dispatcher 24 hrs:  
**Mob.** +48 605 073 225  
**E-mail:** scie@fairplay-towage.com

The company provides wide range of services:

- towing of ships in ports Szczecin, Świnoujście and Police;
- towing at sea;
- towing and mooring in the LNG Terminal Świnoujście;
- ice breaking;
- pontoon rental;
- transport of supplies to ships in port and at roadstead;
- property salvage at sea;
- berthing;
- oil barrier rental;
- mooring

Equipment:

- port and sea-going tug boats;
- mooring boats;
- oil barrier of 200 m.
- push tugs;
- sea pontoon

The company operates Władysława IV Quay in Świnoujście:

- Unloading – 190 m long and 8.0 m deep;
- Ships Stay – 150 m long and 5.6 m deep;
- Tugs Stay – 55 m long and 4.0 m deep;
- Pilot Service – 140 m long and 4.0 m deep

### Ship Service SA Orlen Group



**Correspondence address:** ul. Tama Pomorzańska 1, 70-030 Szczecin  
**Tel:** +48 91 431 89 91/92  
**Fax:** +48 91 431 89 99  
**Website:** www.ship-service.pl  
**E-mail:** office@ship-service.pl  
**Bunker sales team:** bunker@ship-service.pl  
**Tel:** +48 91 431 89 50/51  
**Environment protection team:**  
odpady.szczecin@ship-service.pl /**Tel:** +48 91 424 38 24

The main business areas of SHIP-SERVICE SA and its subsidiary companies include:

- physical deliveries of bunker fuels (MGO&HSFO)
- environment protection services;
- reception of ship waste
- hire of quays for cargo transshipment ship to truck/ truck to ship

#### Equipment:

Seagoing tankers 3  
River bunker barges 7  
2 road tank trucks

#### Quays:

Cal: 210 m long and 5.4 m deep.  
Oko: 180 m long and 4.5 m deep.

### Zakład Usług Żeglugowych Sp. z o.o. & co. Sp. k.



**Address:** ul. Ludowa 16, 71-100 Szczecin  
**Tel:** +48 91 300 05 75  
**Tel. mob. 24 hrs (dispatcher 24 hrs):** +48 695 777 902  
**E-mail:** operations@zuz.pl  
**Website:** www.zuz.pl

The company offers harbour and sea towing, barge and pontoon transport, mooring, ice breaking, salvage operations. Dispatcher's Office on duty 24 hrs/day.  
Equipment: Tugs 1400 up to 2500 HP.





Directory of  
**companies**

# Directory of companies



► **Authorities**

**Governor's Office of Szczecin Province**  
ul. Wały Chrobrego 4  
70-502 Szczecin  
Tel/Fax +48 91 430 35 00  
zuw@szczecin.uw.gov.pl  
www.szczecin.uw.gov.pl

**Marshal's Office of the Province of West Pomerania in Szczecin**  
ul. Korsarzy 34  
70-540 Szczecin  
Tel: +48 91 480 72 53  
Fax: +48 91 489 39 68  
marszalek@wzp.pl  
www.wzp.pl

**Szczecin City Hall**  
Plac Armii Krajowej 1  
70-456 Szczecin  
Tel: +48 91 424 59 31  
Fax: +48 91 42 45 322  
boi@um.szczecin.pl  
www.szczecin.pl

**Świnoujście City Hall**  
ul. Wojska Polskiego 1  
72-600 Świnoujście  
Tel: +48 91 321 31 93  
Fax: +48 91 321 59 95  
sekretariat@um.swinoujscie.pl  
www.swinoujscie.pl

**Maritime Office in Szczecin**  
Plac Batorego 4  
70-207 Szczecin  
Tel: +48 91 440 34 00  
Fax: +48 91 434 46 56  
sekretariat@ums.gov.pl  
www.ums.gov.pl

**Harbour Master's Office**  
ul. Jana z Kolna 9  
71-603 Szczecin  
Tel: +48 91 440 33 84  
Fax: +48 91 434 39 84  
szczecintraffic@ums.gov.pl  
www.ums.gov.pl

**Harbour Master's Office in Świnoujście**  
ul. Wybrzeże Władysława IV 7  
72-600 Świnoujście

Tel/Fax: + 48 91 440 33 90  
swinoujscietraffic@ums.gov.pl

**The State Water Authority Polish Waters Regional Water Management Board in Szczecin**  
ul. Tama Pomorzańska 13 A  
70-030 Szczecin  
Tel: +48 91 441 12 00  
Fax: +48 91 441 13 00  
szczecin@wody.gov.pl  
www.kzgw.pl

► **Associations/ Chambers**

**Maritime Experts Association**  
ul. Wały Chrobrego 1-2  
70-500 Szczecin  
Tel: +48 601 581 611  
biuro@mea.szczecin.pl  
www.mea.szczecin.pl

**Maritime Cluster of Western Pomerania Technical Secretariat PolskieTerminals S.A.**  
ul. Bytomska 7  
70-603 Szczecin  
Tel: 91 430 85 03  
Tel/Fax: 91 462 49 41  
biuro@klastermorski.com  
www.klastermorski.com

**Northern Chamber of Commerce**  
Al. Wojska Polskiego 86  
70-482 Szczecin  
Tel: + 48 91 486 07 65  
Fax: + 48 91 486 07 68  
biuro@izba.info  
www.izba.info

**Polish Chamber of Maritime Economy**  
Szczecin Branch  
ul. Bytomska 7  
70-603 Szczecin  
Tel/Fax: +48 91 430 84 48  
szczecin.kigm@wp.pl  
www.kigm.pl

**Polish International Freight Forwarders**

**Association**  
ul. Świętojańska 3/2  
81-368 Gdynia  
Tel: +48 58 620 19 50  
Fax: +48 58 661 39 35  
pisil@pisil.pl  
www.pisil.pl

**Polish Shipbrokers' Association**  
Pl. Rodła 8  
70-419 Szczecin  
Tel/Fax: +48 693 437 165  
sz@shipagent.pl  
www.shipagent.pl

**Shortsea Promotion Centre Poland**  
ul. Bytomska 7 p. 14  
70-603 Szczecin  
Tel: +48 91 430 83 21  
Fax: +48 91 430 84 48  
biuro@shortsea.pl  
www.shortsea.pl

**Westpomeranian Maritime Cluster**  
Łady 2 St. 70-966 Szczecin  
Mob. +48 721 808 608  
Tel. +48 91 432 46 94  
Fax +48 91 432 46 50  
biuro@klastermorski.org

► **Bunkering**

**Oktan Energy & V/L Service**  
ul. Hryniewieckiego 1  
70-606 Szczecin  
Tel: +48 91 814 21 00, 01  
Fax: +48 91 814 21 49  
bunker@oktan-energy.pl  
www.oktan-energy.pl

**Polski Koncern Naftowy ORLEN SA**  
Terminal Paliw Świnoujście  
ul. Bunkrowa 5  
72-602 Świnoujście  
Tel: +48 24 256 72 45  
Fax: +48 91 321 52 17  
www.orlen.pl

**Ship-Service S.A.**  
ul. Tama Pomorzańska 1  
70-030 Szczecin  
Tel: +48 91 431 89 91/92  
Fax: +48 431 89 99  
office@ship-service.pl  
www.ship-service.pl

► **Cargo Control**  
  
**Eurocargo Survey Sp. z o.o.**  
ul. Bytomska 15  
70-603 Szczecin  
Tel/Fax: +48 91 430 80 30  
ecs@eurocargosurvey.com  
www.eurocargosurvey.com

**Marine Services Jan Plażuk**  
ul. Gdańska 21e  
72-600 Świnoujście  
Tel: +48 91 327 47 76  
Mobile: +48 605 233 721  
Fax: +48 91 321 84 80  
marservjp@fornet.com.pl  
www.marservjp.swi.pl

**Polcargo International Sp. z o.o. Supervising and Inspecting Services**  
ul. Henryka Pobożnego 5  
70-900 Szczecin  
Tel: +48 91 441 82 01  
Fax: +48 91 488 20 36  
office@polcargo.pl  
www.polcargo.pl

**SVS – MARINUS Robert Kęsicki**  
ul. Hryniewieckiego 1  
70-606 Szczecin  
Tel: +48 91 430 82 24  
Fax: +48 91 430 84 33  
svs@post.pl  
www.surveyors.pl

**SGS Polska Sp. z o.o. Szczecin Branch Office**  
ul. Gdańska 16 b  
70-606 Szczecin  
Tel: +48 91 462 33 26  
Tel. +48 91 421 35 17  
(Environment Protect. Deptm.)  
Tel. +48 691 767 412  
(Grain Daptm., Hryniewieckiego 27 St.)  
Fax: +48 91 462 30 72  
Eryk.praxmajer@sgs.com  
www.sgs.pl

**Shipcontrol Sp. z o.o. Expertising and Quantity Control**  
ul. Bytomska 7  
70-952 Szczecin  
Skrytka pocztowa 752

Tel./Fax: +48 91 462 37 03  
ship@wp.pl

► **Classification Societies**

**Bureau Veritas Polska Sp. z o.o.**  
ul. Storrady-Świętosławy 1B/55, 71-602 Szczecin  
Tel: +48 91 431 51 60  
beata.zembrzaska@pl.bureauveritas.com  
www.bureauveritas.pl

**Det Norske Veritas Poland Sp. z o.o. (DNV GL) Area Office Northeast Europe**  
ul. Mieszka I 82/83  
71-011 Szczecin  
Tel: +48 91 431 50 00  
Fax: +48 91 431 53 01  
szczecin@dnvgl.com  
www.dnvgl.pl

**Lloyd's Register Polska Sp. z o.o.**  
Al. Zwycięstwa 13A  
80-219 Gdańsk  
Tel: +48 91 488 37 75  
(Surveyors in Szczecin)  
Fax: +48 91 488 37 99  
gdansk@lr.org  
www.lr.org.pl

**Polish Register of Shipping-Branch Office Szczecin:**  
ul. Św. Ducha 5/3u  
70-205 Szczecin  
Tel: +48 91 810 92 80  
+ 601 173 720  
Fax: +48 91 810 92 92  
szczecin@prs.pl  
Station Świnoujście:  
Tel./Fax: +48 91 321 22 40  
swinoujscie@prs.pl  
www.prs.pl

► **Customs Office**

**Chamber of Fiscal Administration in Szczecin**  
ul. Roosvelta 1,2  
70-525 Szczecin  
Tel. +48 91 48 03 600  
Fax +48 91 48 03 656  
zachodniopomorskie.kas.gov.pl  
ias@zp.mofnet.gov.pl  
**Customs in the port:**

- Customs Department Łasztownia Quay (Szczecin)  
ul. Bytomska 9,  
70-603 Szczecin  
Tel: +48 91 883 53 44  
- Customs Department Świnoujście  
ul. Dworcowa 1  
72-606 Świnoujście  
Tel: +48 91 322 63 11  
Tel: +48 660 599 912  
oc.swinoujscie@szcz.mofnet.gov.pl

► **Equipment Repairers**

**Amber Bridge Sp. z o.o.**  
ul. Energetyków 9  
70-656 Szczecin  
Tel: +48 91 432 89 78  
Fax: +48 91 432 89 80  
tech@amberbridge.pl  
www.amberbridge.pl

**Infra-Port Sp. z o.o.**  
ul. Bytomska 3-6  
70-603 Szczecin  
Tel: +48 91 430 82 56,  
430 82 77  
Fax: +48 91 430 80 77  
biuro@infraport.pl  
www.infraport.pl

**Marco Service Sp. z o.o.**  
ul. Władysława IV 1  
70-651 Szczecin  
Tel: +48 91 462 36 43  
Fax: +48 91 462 39 01  
biuro@marcoservice.com.pl  
www.marcoservice.com.pl

**Partner-Ship**  
ul. Ludowa 16  
71-700 Szczecin  
Tel: +48 914 625 200  
Fax: +48 91 914 625 201  
biuro@partner-ship.pl  
www.partner-ship.pl

**Polship Sp. z o.o. Karol Falba**  
ul. Dunkowskiego 38/72  
70-123 Szczecin  
Tel: +48 696851524  
ssp@shipservicepartner.com  
www.shipservicepartner.com

► **Ferry Operators**

**Ferry Terminal Świnoujście Sp. z o.o.**  
ul. Dworcowa 1

72-606 Świnoujście  
Tel: +48 91 321 61 12  
Fax: +48 91 322 61 70  
terminalpromowy@sft.pl  
www.sft.pl

**Polska Żegluga Bałtycka Head Office:**  
ul. Portowa 41  
78-100 Kołobrzeg  
Tel: +48 94 355 21 02  
info@polferries.pl  
www.polferries.pl  
**Szczecin Branch Morskie Biuro Podróży – Szczecin**  
ul. Wyszyńskiego 28  
70-203 Szczecin  
Tel: +48 22 230 2222  
Fax: +48 91 488 04 36  
mbp.szczecin@polferries.pl  
www.polferries.pl  
**Świnoujście Branch Morskie Biuro Podróży – Świnoujście**  
ul. Bema 9/2  
72-600 Świnoujście  
Tel: +48 91 322 43 96  
Fax: +48 91 327 06 46  
mbp.swinoujscie@polferries.pl  
www.polferries.pl

**TT Line Polska Sp. z o.o.**  
ul. Duńska 2  
72-600 Świnoujście  
Tel: +48 91 326 35 10  
Fax: +48 91 326 35 60  
www.ttline.com

**Unity Line Head Office:**  
Plac Rodła 8  
70-419 Szczecin  
Tel: +48 91 359 55 55  
Fax: +48 91 359 56 75  
cargo@unityline.pl  
www.unityline.pl  
**Świnoujście Branch:**  
ul. Fińska 2  
72-606 Świnoujście  
Tel: +48 91 321 61 57  
Fax: +48 91 321 61 95  
Terminal.cargo@unityline.pl  
www.unityline.pl

► **Forwarding Companies**

**Alfa Cargo Sp. z o.o.**  
Plac Batorego 3

70-207 Szczecin  
Tel: +48 91 489 06 61  
Fax: +48 91 812 55 02  
office@alfacargo.pl  
www.alfacargo.pl

**AHLMANN-ZERSSEN Sp. z o.o.**  
ul. Panieńska 10  
70-535 Szczecin  
Tel: +48 91 464 60 89  
Fax: +48 91 489 51 00  
szczecin@ahlmann-zerssen.pl  
www.ahlmann-zerssen.pl

**Akpol Sp. z o.o.**  
ul. Szarotki 17/3  
71-604 Szczecin  
Tel: +48 91 488 20 89  
Fax: + 48 91 489 21 94  
Spedycja@akpol-sz.pl  
www.akpol-sz.pl

**ANDREAS Sp. z o.o.**  
ul. Nad Odrą 72  
71-820 Szczecin  
Tel: +48 91 453 86 91  
Fax: +48 91 453 86 91  
snop@andreas.szczecin.pl  
www.andreas.szczecin.pl

**Baltic Forwarding Company Sp. z o.o.**  
70-651 Szczecin  
ul. Władysława IV 1  
skr. poczt. 644  
Tel: +48 91 462 47 13  
Fax: +48 91 886 32 05  
spedycja@balticforwarding.com  
logistyka@balticforwarding.com  
www.bfc-szczecin.com

**Best Logistics Sp. z o.o.**  
ul. Zbożowa 4  
70-653 Szczecin  
Tel: +48 91 483 08 21-6  
Fax: +48 91 483 08 29  
info@best-logistics.com  
www.best-logistics.com

**Bulk Cargo-Port Szczecin Sp. z o.o.**  
ul. Gdańska 21  
70-661 Szczecin  
Tel: +48 91 430 70 12,  
430 71 12,430 73 73  
Fax: +48 91 462 33 23,  
462 35 29  
spedycja@bulkcargo.com.pl  
biuro@bulkcargo.com.pl  
www.bulkcargo.com.pl

**Cargo Service Sp. z o.o.**  
ul. Bytomska 7  
70- 603 Szczecin  
Tel: +48 91 469 38 70  
Fax: +48 91 430 85 81  
szczecin@cs-agency.pl  
www.cs-agency.pl

**Cargosped Sp. z o.o.**  
**Szczecin Branch Office**  
01-797 Warszawa  
ul. Powązkowska 44c  
Tel: +48 22 375 76 00  
Fax: +48 22 375 76 01  
www.cargosped.com.pl

**CSL Internationale**  
**Spedition Sp. z o.o.**  
ul. Tadeusza Wendy 14  
70-655 Szczecin  
Tel: +48 91 822 84 00  
Fax: +48 91 822 84 05  
sekretariat@csl.eu  
**Świnoujście Branch:**  
ul. J. Soltana 1  
72-602 Świnoujście  
Tel. mob: +48 601 730 440  
swinoujście@csl.com.pl  
www.csl.com.pl

**Dan Shipping & Trading**  
**Sp. z o.o.**  
ul. Niepodległości 22  
70-412 Szczecin  
P.O. Box 750  
Tel: +48 91 434 05 03  
Fax: +48 91 831 47 80  
logistic@dan-shippng.com.pl  
agency@dan-shipping.com.pl  
chartering@dan-shipping.com.pl  
www.dan-shipping.com.pl

**Euro Forwarding and**  
**Shipping Agency Sp. z o.o.**  
ul. Jana Soltana 1  
72-602 Świnoujście  
Tel: +48 91 321 65 11  
Fax: +48 91 321 68 77  
office@eurofsa.com  
www.eurofsa.com

**Fast Baltic Sp. z o.o.**  
ul. Bytomska 7  
70-603 Szczecin  
Tel: +48 91 43 08 550, 43  
08 084  
Fax: +48 91 43 08 608  
cargo@fastbaltic.com.pl  
www.fastbaltic.com.pl

**C. Hartwig Szczecin**  
**International**  
**Forwarders Sp. z o.o.**  
ul. Jana Kazimierza 3  
71-620 Szczecin  
Tel: +48 91 480 67 00  
Fax: +48 91 480 67 29  
management@hartwig.  
szczecin.pl  
www.hartwig.szczecin.pl  
**Świnoujście Branch**  
ul. Dworcowa 16  
72-602 Świnoujście  
Tel: +48 91 321 50 79  
Fax: +48 91 321 61 31  
swinoujście@hartwig.  
szczecin.pl  
**Ferry Port Bureau:**  
ul. Bunkrowa 1  
72-602 Świnoujście  
Tel: +48 91 321 62 97

**iLog Baltic Sp. z o.o.**  
ul. Wielka Odrzanska 23/2  
70-535 Szczecin  
Tel: +48 91 431 47 77  
Mobile: +48 601 55 77 65  
Fax: +48 91 489 50 46  
jarek.paslawski@ilogbaltic.com  
www.ilogbaltic.com

**Kingsped Sp. z o.o.**  
ul. Bytomska 8a  
70-603 Szczecin  
Tel: +48 91 462 39 03  
Tel/Fax: +48 91 430 83 53  
info@kingsped.com.pl  
www.kingsped.com.pl

**Magemar Polska Sp. z o.o.**  
ul. Bytomska 7  
70-603 Szczecin  
Tel: +48 91 430 88 91  
Fax: +48 91 430 88 93  
office@magemar.com.pl  
www.magemar.com.pl

**NTA Sp. z o.o.**  
ul. Morska 59  
81-323 Gdynia  
Tel: +48 58 669 85 00  
Fax: +48 58 669 85 69  
office@nta.com.pl  
**Branch Office Szczecin**  
ul. Hryniewieckiego 16  
70-603 Szczecin  
Tel;+48 91 430 84 75  
Fax: +48 91 430 84 74  
www. nta.com.pl

**Pekaes Sp. z o.o.**  
Ul. Spedycyjna 1  
05-870 Błonie  
Tel: +48 22 460 26 26  
www.pekaes.pl  
Szczecin Branch  
ul. Przyszłości 15b  
70-893 Szczecin  
+48 91 831 29 00  
lukasz.szymanski@pekaes.pl

**PKP Cargo Connect**  
**Sp. z o.o.**  
**Szczecin Branch**  
ul. Ślaska 32 a  
70-433 Szczecin  
Tel: +48 91 431 95 30  
o\_szczecin@tradetrans.pl  
www.tradetrans.eu

**Pol-Agent Sp. z o.o.**  
ul. Energetykow 3/4  
70-952 Szczecin  
Tel: +48 91 462 31 35  
Fax: +48 91 462 43 74  
inf@polagent.com.pl  
www.polagent.com

**Polsad Sp. z o.o.**  
ul. Henryka Pobożnego 5  
70-608 Szczecin  
Tel: +48 91 433 69 25  
Fax: +48 91 434 01 74  
k.pilarski@polsad.pl  
www.polsad.pl

**Rentrans Cargo Sp. z o.o.**  
ul. Zbożowa 4  
70-653 Szczecin  
Tel: +48 91 425 73 31  
Fax: +48 91 462 45 56  
rentrans@rentrans.com.pl  
agency@rentrans.com.pl  
www.rentrans.com.pl

**Rhenus Port Logistics**  
**Sp. z o.o.**  
ul. Zbożowa 4  
70-653 Szczecin  
Tel: +48 91 462 46 32  
Fax: +48 91 462 31 36  
szczecin@pl.rhenus.com  
marketing@pl.rhenus.com  
www.rhenus.com

**Scan Shipping Pol**  
**Sp. z o.o.**  
ul. Wielka Odrzańska 18a/1  
70-535 Szczecin

Tel: +48 91 814 62 32, 91  
814 62 36  
Fax: +48 91 814 62 37  
szczecin@scanshipping.eu  
www.scanshipping.eu

**Spedrapid Sp. z o.o.**  
ul. Storrady-Świętosławy  
1A/41  
71-602 Szczecin  
Tel: +48 91 433 50 20  
+48 91 433 31 01  
Fax:+ 48 91 433 30 85  
szczecin@spedrapid.pl  
**Harbour Office:**  
ul. Bytomska 7  
Tel: +48 91 430 86 17  
Fax: +48 91 462 34 35  
www.spedrapid.pl

**GPA Shipping Sp. z o.o.**  
Ul. Merkatora 11  
70-676 Szczecin  
Tel: +48 91 462 43 55  
www.gpashipping.com

**Unibaltic Sp. z o.o.**  
ul. Tama Pomorzańska 14E  
70-030 Szczecin  
Tel: +48 91 432 52 40...44  
Fax: +48 91 432 52 45  
unibaltic@unibaltic.pl  
www.unibaltic.pl

► **Inland Waterway**  
**Shipping Companies**

**OT Logistic S.A.**  
ul. Zbożowa 4  
70-653 Szczecin  
Tel: +48 91 425 73 00  
Fax: +48 91 425 73 58  
info@otlogistics.com.pl  
www.otlogistics.com.pl

**Deutsche Binnenreederei**  
**AG (OT Logistics Group)**  
Revaler Strase 100  
10245 Berlin, Germany  
Tel: +49 30 293 76 101  
Fax: +49 30 293 76 201  
dbr@binnenreederei.de  
www.binnenreederei.de

**Odra Rhein Lloyd GmbH**  
**(OT Logistics Group)**  
Revaler Strase 100  
10245 Berlin, Germany

Tel: +49 30 293 76-0

Fax +49 30 293 76 201  
info@odrarheinlloyd.de  
www.odrarheinlloyd.de

► **Pilotage**

**Szczecin-Pilot Sp. z o.o.**  
ul. Światowida 24  
71-727 Szczecin  
Tel: +48 91 432 56 00  
pilot@szczecinpilot.pl  
stacja@szczecinpilot.pl  
**Świnoujście Branch:**  
ul. Rogozińskiego 3  
72-600 Świnoujście  
Tel/Fax: +48 91 321 34 31  
stacja-swin@szczecinpilot.pl  
www.szczecinpilot.pl

**SHIPCHANDLERS**  
**Baltona Shipchandlers**  
**Sp. z o.o.**  
**Świnoujście Office:**

ul. Fińska 1  
72-602 Świnoujście  
Tel/Fax: +48 91 321 62 65,  
+48 91 321 66 16  
swinoujście@baltona.pl  
Shipchandler Szczecin:  
ul. Gdańska 6c  
70-660 Szczecin  
Tel/Fax: +48 91 852 24 23  
szczecin@baltona.pl  
www.baltona.pl

**Pacific Trade & Service**  
ul. Druckiego-Lubeckiego 1a  
71-656 Szczecin  
Tel: +48 91 423 35 68  
Fax: + 48 91 423 26 44  
pts@shipchandler.pl  
www.shipchandler.pl

**Polship Sp. z o.o.**  
ul. Dunikowskiego 38/72  
70-123 Szczecin  
Tel: +48 696 851 524  
ssp@shipservicepartner.com  
www.polship.eu  
www.shipservicepartner.com

► **Shipowners**

**Euroafrica Services Ltd**  
ul. Energetykow 3/4  
70-952 Szczecin  
Tel: +48 91 814 34 00, 814  
32 55, 814 32 56

Fax: +48 91 814 33 15

info@euroafrica.com.pl  
www.euroafrica.com.pl

**Polska Żegluga Bałtycka SA**  
**(Polferries)**  
ul. Portowa 41  
78-100 Kołobrzeg  
Tel: +48 22 230 22 22,  
+48 94 35 52 102  
info@polferries.pl  
rezerwacje@polferries.pl  
www.polferries.pl  
**Terminal Pasażerski**  
ul. Dworcowa 1  
72-606 Świnoujście  
Tel:+48 91 469 60 42  
pax.swinoujście@polferries.pl  
**Świnoujście**  
**Terminal Cargo**  
ul. Fińska 1  
72-606 Świnoujście  
Tel:+48 91 469 60 41  
cargo.swinoujście@polferries.pl

**Polska Żegluga Morska**  
Plac Rodła 8  
70-419 Szczecin  
Tel: +48 91 359 43 33  
Fax: +48 91 359 42 88  
www.polsteam.com.pl

**Unibaltic Sp. z o.o.**  
ul. Tama Pomorzańska 14e  
70-030 Szczecin  
Tel: +48 91 432 52 40...44  
Fax: +48 91 432 52 45  
unibaltic@unibaltic.pl  
www.unibaltic.pl

**Unity Line Limited**  
**Sp. z o.o.**  
Plac Rodła 8  
70-419 Szczecin  
**Passanger Branch**

Tel: +48 91 359 57 95  
Fax: +48 91 359 58 85  
info@unityline.pl  
promy@unityline.pl  
**Cargo Branch**  
Tel:+48 91 359 55 55  
Fax: +48 91 359 56 75  
cargo@unityline.pl  
**Świnoujście Branch**  
ul. Fińska 7  
72-606 Świnoujście  
Tel: +48 91 321 61 57  
Fax: +48 91 321 6195  
terminal.cargo@unityline.pl

www.unityline.pl

**Żegluga Polska SA**  
Plac Rodła 8  
70-419 Szczecin  
Tel: +48 91 359 40 75  
Fax: +48 91 359 42 99  
zegluga.polska@polsteam.com.pl  
www.polsteam.com.pl

► **Shipping Agents**

**Alfa Cargo Sp. z o.o.**  
Plac Batorego 3  
70-207 Szczecin  
Tel: +48 91 489 06 61  
Fax: +48 91 812 55 02  
office@alfacargo.pl  
www.alfacargo.pl

**Albers - Hansen Sp. z o.o.**  
ul. Panieńska 10  
70-535 Szczecin  
Tel: +48 91 488 23 42  
Fax: +48 91 488 23 47  
szczecin@a-h.pl  
www.a-h.pl

**Baltic Shipping Agency**  
**Sp. z o.o.**  
**Branch Office Szczecin**  
ul. Małopolska 43  
70-515 Szczecin  
Tel: +48 91 488 07 01  
Fax: +48 91 434 22 33  
bsa.szczecin@bsa.pl  
www.bsa.pl

**Cargo Service Agency**  
**Sp. z o.o.**  
ul. Bytomska 7  
70-603 Szczecin  
Tel: +48 91 469 38 70 int.11  
Fax: +48 91 430 85 81  
szczecin@cs-agency.pl  
www.cs-agency.pl

**CST Comet Shipping**  
**& Trading Sp. z o.o.**  
ul. Merkatora 11  
70-676 Szczecin  
Tel: +48 91 462 43 66  
Fax: +48 91 462 47 87  
info@cstcomet.pl  
www.cstcomet. pl

**Dan Shipping & Trading**  
**Sp. z o.o.**  
ul. Niepodległości 22  
70-412 Szczecin

P.O. Box 750  
Tel: +48 91 434 05 35  
Fax: +48 831 47 80  
agency@dan-shipping.com.pl  
www.dan-shipping.com.pl

**Fast Baltic Sp. z o.o.**  
ul. Bytomska 7  
70-603 Szczecin  
Tel: +48 91 430 85 50,  
430 80 84  
Fax: +48 91 430 86 08  
info@fastbaltic.com.pl  
www.fastbaltic.com.pl

**Euro Forwarding and**  
**Shipping Agency Sp. z o.o.**  
ul. Jana Soltana 1  
72-602 Świnoujście  
Tel: +48 91 321 65 11  
Fax: +48 91 321 68 77  
office@eurofsa.com  
www.eurofsa.com

**GAC (Poland) Sp. z o.o.**  
ul. Starego Wiarusa 32  
71-206 Szczecin  
Tel: +48 91 487 37 54  
Fax: +48 91 487 36 97  
poland@gac.com  
www.gac.com/poland

**iLog Baltic Sp. z o.o**  
ul. Wielka Odrzanska 23/2  
70-535 Szczecin  
Tel: +48 91 431 47 77  
Mobile: +48 601 55 77 65  
Fax: +48 91 489 50 46  
jarek.paslawski@ilogbaltic.com  
www.ilogbaltic.com

**Interagent Sp. z o.o.**  
ul. Gen. Rayskiego 23/13  
70-442 Szczecin  
Tel: +48 695 408 222  
Fax: +48 91 882 13 24  
office@interagent.com.pl  
www.interagent.com.pl

**Magemar Polska Sp. z o.o.**  
ul. Bytomska 7  
70-603 Szczecin  
Tel: +48 91 430 88 91  
Fax: +48 91 430 88 93  
office@magemar.com.pl  
www.magemar.com.pl

**Morska Agencja Szczecin Sp. z o.o.**  
**Head Office:**  
Plac Batorego 4, P.O. Box 606, 70-207 Szczecin  
Tel: +48 91 433 85 73  
Mobile: +48 601 702 563  
Fax: +48 91 434 26 43, 433 82 49  
headoffice@mas.szczecin.pl  
www.mas.szczecin.pl  
**Branch Office:**  
ul. Barlickiego 16/15 72-602 Świnoujście  
Mobilel: +48 601 702 543  
Fax: +48 91 321 50 21  
swinoujscie@mas.szczecin.pl  
**Port Office:**  
ul. Portowa 41  
78-106 Kołobrzeg  
Tel: +48 94 354 64 53  
Mobile: +48 601 870 910  
Fax: +48 94 352 02 02  
kolobrzeg@mas.szczecin.pl  
www.mas.szczecin.pl

**Nawigator Shipping Sp. z o.o. Szczecin Branch Office**  
ul. Bytomska 7  
70-603 Szczecin  
Tel: +48 91 430 85 50  
Fax: +48 91 430 86 08  
info@fastbaltic.com.pl  
www.fast-lines.com

**Pol-Agent Sp. z o.o.**  
ul. Energetyków 3/4  
70-952 Szczecin  
Tel: +48 91 462 31 35  
Fax: +48 91 462 43 74  
inf@polagent.com  
www.polagent.com

**Polfracht Sp. z o.o.**  
ul. Pułaskiego 8  
81-368 Gdynia  
Tel: +48 58 627 21 00  
Fax: +48 58 621 99 84  
agency@polfracht.pl  
**Port Agency Szczecin**  
ul. 3 Maja 1  
70-214 Szczecin  
Tel: +48 91 488 22 99  
Fax: +48 91 579 32 22  
www.polfracht.pl

**Polsteam Shipping Agency Ltd.**  
Plac Rodła 8  
70-419 Szczecin

Tel: +48 91 359 42 42-3  
Fax: +48 91 488 30 19  
agency@polsteam.com.pl  
www.polsteamagency.pl

**Port Logics Cargo and Containers Sp. z o.o.**  
ul. Hryniewiekiego 1  
70-606 Szczecin  
Tel: +48 91 489 88 88  
Fax: +48 91 489 88 99  
office@plcc.pl  
www.plcc.pl

**Poseidon Frachcontor Junge Ltd.**  
ul. G. Merkatora 11  
70-676 Szczecin  
Tel: +48 91 462 40 50, 430 86 95  
Fax: +48 91 462 42 41  
agency.szc@poseidon-fcj.pl  
www.poseidon-fcj.pl

**Rentrans Cargo Sp. z o.o.**  
ul. Zbożowa 4  
70-653 Szczecin  
Tel: +48 91 425 73 31  
Fax: +48 91 462 45 56  
renttrans@renttrans.com.pl  
agency@renttrans.com.pl  
www.renttrans.com.pl

**Scan Shipping Pol Sp. z o.o.**  
ul. Wielka Odrzańska 18a/1  
70-535 Szczecin  
Tel: +48 91 814 62 32, 814 62 35  
Fax: +48 91 812 12 02  
szczecin@scanshipping.eu  
www.scanshipping.eu

**Unibaltic Sp. z o.o.**  
ul. Tama Pomorzańska 14e  
70-030 Szczecin  
Tel: +48 91 432 52 40..44  
Fax: +48 91 432 52 45  
unibaltic@unibaltic.pl  
www.unibaltic.pl

**Unifeeder AS/Branch in Poland - Office in Szczecin**  
ul. Wielka Odrzańska 26  
70-535 Szczecin  
Tel: +48 91 434 69 11  
Fax: +48 91 434 69 56  
**Office in Gdynia**  
ul. Sportowa 8  
81-300 Gdynia

Tel: +48 58 35 00 723  
Fax: +48 58 35 00 799  
pl-ops@unifeeder.com  
www.unifeeder.com

► **Shiprepair Yards**  
  
**Makrum Pomerania Sp. z o.o.**  
ul. Gdanska 36  
70-952 Szczecin  
Tel: +48 91 814 50 00  
Fax: +48 91 814 50 01  
biuro.szczecin@makrum-pomerania.pl  
www.makrumpomerania.pl

**Morska Stocznia Remontowa GRYFIA S.A.**  
ul. Ludowa 13  
71-700 Szczecin  
Tel: +48 91 42 42 258  
Fax: +48 91 42 42 733  
**Production Deptm. in Świnoujście:**  
ul. Ludzi Morza 16  
72-602 Świnoujście  
Tel: +48 91 321 62 40 ...49  
Fax: +48 91 321 61 44

**Commercial Office Szczecin:**  
salesSZ@msgryfia.pl  
**Commercial Office Świnoujście:**  
salesSW@msgryfia.pl  
www.msgryfia.pl

**Poltramp Yard Sp. z o.o.**  
Nabrzeże 87 / Quay 87  
ul. Portowa 16  
72-600 Świnoujście  
**Szczecin Branch:**  
Ul. Firlika 20, 71-637 Szczecin  
Tel: +48 91 321 51 31  
poltramp@yard87.pl  
www.poltramp.pl

► **Stevedoring Companies**

**Alfa Terminal Szczecin Sp. z o.o.**  
ul. Nad Odrą 10  
71-833 Szczecin  
Tel: + 48 91 42 47 893  
Mobile: +48 607 910558  
a.czyzewski@alfaterminal.pl  
www.alfaterminal.pl

**Andreas Sp. z o.o.**

ul. Nad Odrą 72  
71-820 Szczecin  
Tel: +48 91 453 86 91, 453 81 67  
Tel: +48 91 421 59 10 (port office)  
sekretariat@andreas.szczecin.pl  
snop@andreas.szczecin.pl  
www.andreas.szczecin.pl

**Almex Sp. z o.o.**  
ul. Księdza Stanisława Kujota 1, 70-605 Szczecin  
Tel: +48 91 462 48 62  
Fax: +48 91 462 37 17  
biuro@almex-recycling.pl  
www.almex-recycling.pl

**Baltchem SA Zakłady Chemiczne w Szczecinie**  
ul. Księdza Stanisława Kujota 9, 70-605 Szczecin  
Tel: +48 91 462 43 42  
Fax: +48 91 462 43 51  
biuro@baltchem.com.pl  
www.baltchem.com.pl

**Baltic Stevedoring Company**  
ul. Władysława IV 1  
70-651 Szczecin  
Tel: +48 91 462 47 13  
Fax: +48 91 886 32 05  
logistyka@balticstevedoring.com  
www.balticstevedoring.com

**Bulk Cargo – Port Szczecin Sp. z o.o.**  
ul. Gdańska 21  
70-661 Szczecin  
Tel: +48 91 430 73 73, 430 71 12  
Fax: +48 91 462 35 29  
biuro@bulkcargo.com.pl  
www.bulkcargo.com.pl

**Cemex Polska Sp. z o.o. Logistic Terminal Szczecin**  
ul. Fabryczna 1  
71-827 Szczecin  
Tel: +48 800 700 077  
cemexpolska@cemex.pl  
www.cemex.pl

**Centrum Logistyczne Gryf Sp. z o.o.**  
ul. Władysława IV 1  
70-651 Szczecin  
Tel: +48 91 810 12 00

Fax: +48 91 810 12 03  
info@chlodniagryf.pl  
www.chlodniagryf.pl

**Chłodnia Szczecińska Sp. z o.o.**  
ul. Bytomska 7  
70-603 Szczecin  
Tel: +48 91 462 39 13, 462 40 23  
Fax: +48 91 462 36 22  
chlodnia@post.pl  
www.chlodniaszczecinska.pl

**Cronimet PL Sp. z o.o.**  
Address: ul. Księdza Stanisława Kujota 15, 70-605 Szczecin  
Tel: +48 91 430 8916  
Fax: +48 91 430 8913  
szczecin@cronimet.pl  
www.cronimet.com.pl

**DB Port Szczecin Sp. z o.o.**  
ul. Bytomska 14  
70-603 Szczecin  
Tel: +48 91 430 86 60, 430 86 74  
Fax: +48 91 462 47 79, 462 47 80  
sekretariat@dbport.pl  
marketing@dbport.pl  
portszczecin.deutschebahn.com

**Elewator EWA Sp. z o.o.**  
ul. Hryniewieckiego 21  
70-606 Szczecin  
Tel: +48 91 430 82 66, 430 83 02  
Fax: +48 91 462 41 65  
sekretariat@elewatorewa.szczecin.pl  
www.elewator-ewa.szczecin.pl

**Euro Terminal Co. Ltd.**  
ul. Jana Sołtana 1  
72-602 Świnoujście  
Tel: +48 91 321 65 11  
Fax: +48 91 321 65 10  
office@euro-terminal.com  
www.euro-terminal.com

**Fast Terminals Sp. z o.o.**  
ul. Bytomska 7  
70-603 Szczecin  
Tel: +48 91 430 85 98  
Fax: +48 91 430 30 84  
fast@fastterminals.com.pl  
www.fast-lines.com  
www.fastterminals.com.pl  
**Ferry Terminal**

**Świnoujście Sp. z o.o.**  
ul. Dworcowa 1  
72-606 Świnoujście  
Tel: +48 91 322 61 01  
Fax: +48 91 322 61 42  
terminalpromowy@sft.pl  
www.sft.pl  
**Fosfan S.A.**  
ul. Nad Odrą 44/65  
71-820 Szczecin  
Tel: +48 91 445 56 00  
Fax: +48 91 445 56 10  
biuro@fosfan.pl  
www.portnadodra.pl

**Orlen Paliwa Sp. z o.o.**  
Widelka 869  
36-145 Widelka  
e-mail: zarzad.orientpaliwa@orient.pl  
**Liquified Gas Terminal in Szczecin**  
ul. Gdańska 34  
70-661 Szczecin  
Tel: +48 24 201 04 90  
Fax: +48 24 367 70 42  
website: www.orientpaliwa.com.pl

**OT Port Świnoujście Sp. z o.o.**  
ul. Bunkrowa 1  
72-602 Świnoujście  
Tel: +48 91 327 72 00, 327 24 10  
Fax: +48 91 321 52 92  
info@otport.swinoujscie.pl  
www.otport.swinoujscie.pl

**Polskie LNG Sp. z .o.o. Company Head Office**  
ul. Ku Morzu 172-602 Świnoujście  
e-mail: sekretariat.swinoujscie@polskielng.pl  
**Office in Warsaw**  
Jerozolimskie Business Park  
Al. Jerozolimskie 146, building B  
02-305 Warszawa  
Tel. +48 22 589 84 00  
Fax +48 22 589 84 01  
e-mail: sekretariat.warszawa@polskielng.pl  
GAZ-SYSTEM S.A.  
**Spokesperson**  
Tel. +48 22 220 13 12  
Mob. +48 885 263 260  
e-mail: rzecznik@gaz-system.pl  
mariusz.kozlowski@gaz-

-system.pl  
  
**Polski Koncern Naftowy ORLEN S.A.**  
Terminal Paliw Świnoujście  
ul. Bunkrowa 5  
72-602 Świnoujście  
Tel: +48 24 256 72 41  
Fax: +48 91 321 52 17  
www.orient.pl

**Szczecin Bulk Terminal Sp. z o.o.**  
ul. Hryniewieckiego 26  
70-606 Szczecin  
Tel: +48 501 977 822, +48 91 430 82 73  
office.sbt@sbtszczecin.com  
www.sbtszczecin.com

**Szczecińskie Zakłady Zbożowo-Młynarskie PZZ S.A.**  
ul. Basenowa 15-17  
70-660 Szczecin  
Tel: +48 91 462 33 22, +48 797 325 933  
sekretariat@pzz-szczecin.com.pl  
www.pzz-szczecin.pl

► **Towage**

**Project Żegluga FAIRPLAY TOWAGE POLSKA Sp. z o.o. Sp.k.**  
ul. Celna 5 81-337 Gdynia  
www.fairplay-towage.com  
**Szczecin Office:**  
Plac Rodła 9, 70-419 Szczecin  
Tel: +48 91 852 27 20  
e-mail: szczecin@fairplay-towage.com  
**Dispatcher 24 hrs:**  
Mob. +48 605 073 225  
e-mail: szn@fairplay-towage.com  
Świnoujście Office:  
Wybrzeże Władysława IV 3  
72-600 Świnoujście  
Tel: +48 91 322 32 40  
e-mail: swinoujscie@fairplay-towage.com  
**Dispatcher 24 hrs:**  
Mob. +48 605 073 225  
e-mail: scie@fairplay-towage.com

**Zakład Usług Żeglugowych Sp. z o.o.**  
ul. Ludowa 16  
71-100 Szczecin  
Tel: +48 91 300 05 75

Tel. mob. 24 hrs (dispatcher): +48 695 777 902  
operations@zuz.pl  
website: www.zuz.pl

► **Waste Management**  
  
**Infra-Port Sp. z o.o.**  
ul. Bytomska 3-6  
70-603 Szczecin  
Tel: +48 91 430 82 56, 430 82 33  
Fax: +48 91 430 80 77  
biuro@infraport.pl  
www.infraport.pl

**SHIP-SERVICE S.A. ORLEN Group**  
ul. Tama Pomorzańska 1  
70-030 Szczecin  
Tel: +48 91 431 89 91/92  
Fax: +48 91 431 89 99  
website: www.ship-service.pl  
e-mail: office@ship-service.pl  
**Bunker sales team:**  
bunker@ship-service.pl  
Tel: +48 91 431 89 50/51  
**Environment protection team:**  
odpady.szczecin@ship-service.pl  
+48 91 424 38 24

**Spółka Wodna Międzyodrze**  
ul. Przejazd 14, 70-607 Szczecin  
Tel: +48 91 462 39 65-67  
Fax: +48 91 462 39 65-67, int. 30  
info@miedzyodrze.pl  
www.miedzyodrze.pl

► **Duty Free Zones**

**Szczecin and Świnoujście Seaports Authority**  
ul. Bytomska 7  
70-603 Szczecin  
**Commercial Department**  
Tel: +48 91 430 86 46, 430 82 28  
dfz@port.szczecin.pl  
commercial@port.szczecin.pl  
www.port.szczecin.pl

**Euro Terminal Co. Ltd.**  
ul. Jana Sołtana 1  
72-602 Świnoujście  
Tel: +48 91 321 65 11  
Fax: +48 91 321 65 10  
office@euro-terminal.com  
www.euro-terminal.com



**We are one of the largest  
port on the Baltic Sea  
and we are  
growing rapidly.**



**PORT SZCZECIN-ŚWINOUJŚCIE**



**Szczecin and Świnoujście  
Seaports Authority**

Bytomska 7  
70-603 Szczecin, Poland

tel: +48 91 430 82 20  
fax: +48 91 462 34 12

info@port.szczecin.pl  
www.port.szczecin.pl

