

29/02/24

[View in Browser](#)

Climate action now!

Welcome to the February 2024 edition of the Life Terra Newsletter.

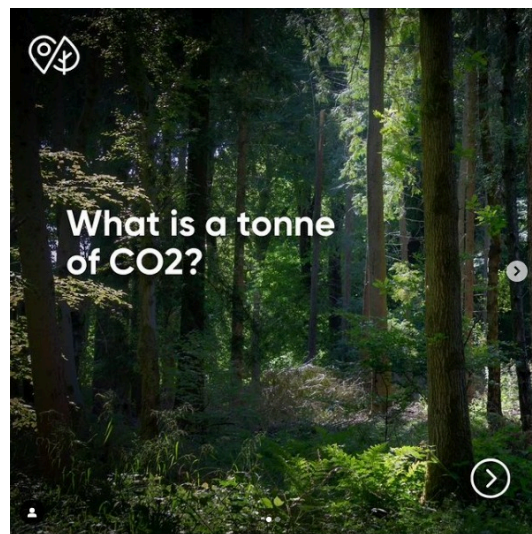
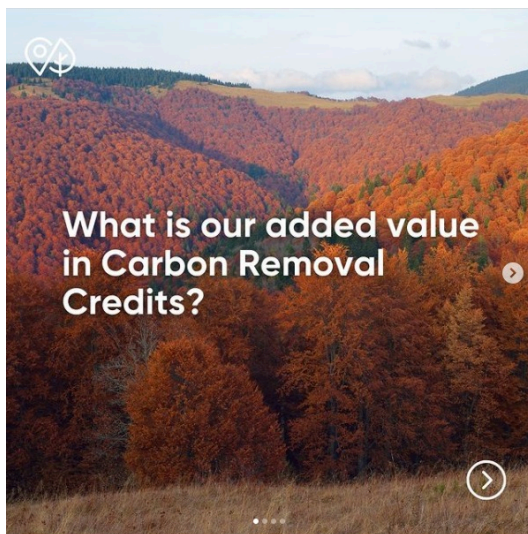
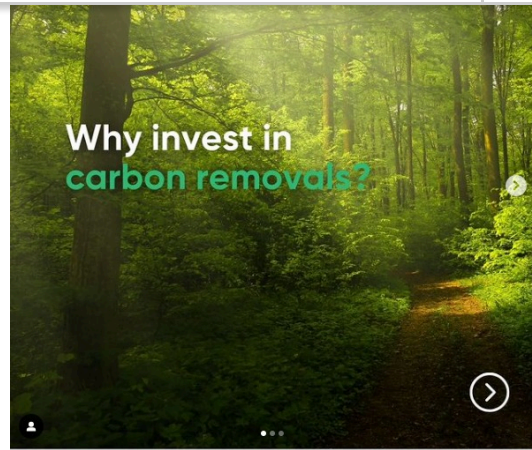
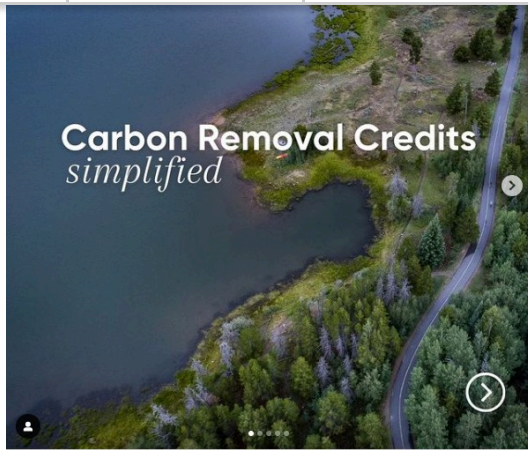
Promote restoration efforts across Europe by [adopting our planted trees](#): start taking climate action!

[Find out more about Life Terra here](#)

Recent Project Activities

Life Terra Carbon Removal Credits: an overview

Is your company thinking of reducing its carbon footprint, while helping European landowners and showcasing its commitment to corporate responsibility? Thanks to our large professional tree-planting projects in more than 20 European countries, Life Terra can provide your company with the certified solution for its environmental impact targets. For more information on how to obtain Carbon Removal Credits, get in touch with carbon@lifeterra.eu



Toulouse follows Nice and welcomes its own Life Terra Miyawaki forest

A Miyawaki forest is a dense, diverse, and fast-growing forest ecosystem designed to thrive in urban environments, contributing significantly to local biodiversity and ecological health.

After planting a first Miyawaki forest in the city of Nice in 2022, a second one was set in place this past month of January, in collaboration with ASES and the Nice municipality, and with the involvement of the local population. You can find more information about it [here](#).

After Nice, we quickly moved to Toulouse, where we planted another Miyawaki forest! Life Terra, the City Hall of Toulouse and ASES, with the support of ClimatePartner, all came together with the local community to put in the ground the saplings that will make up the forest of the future. Read more about the Toulouse Miyawaki forest [here](#)!



EU Framework for Forest Monitoring and Strategic Plans - Euractiv virtual conference

To better understand European forests, and how to protect and restore them, the EU Framework for Forest Monitoring and Strategic Plans proposal aims to develop “an EU-wide forest observation framework” (European Commission) providing open access to the condition and management of the EU's forests.

The legislative proposal could also introduce strategic plans for forests, developed by competent national authorities, and lay out Member States' strategic vision for their forests and the forest-based sector for the upcoming decades.

But does this proposal do enough to protect our forests? What impact will it have on Member States with large forest industries? These are some of the points that were discussed in the most recent Euractiv virtual conference. You can watch the recording of the discussion [here](#).



Life Terra co-organises the 2024 STEM Discovery Campaign

This year, Life Terra co-organises the STEM Discovery Campaign 2024 together with Scientix. We see the SDC as an amazing opportunity for teachers and educators to meet their peers, share knowledge and experiences, and discover teaching opportunities. At Life Terra, we want to engage schools and educators across Europe



New video: planting with Life Terra with your company



In the Blog

- [EIT Community: a tree for every participant](#)
- [Life Terra's Steering Committee Meeting 2024!](#)
- [A day of inclusivity at Asseiceira Leisure Park](#)
- [Snowy tree planting success: 200 more trees in the Netherlands](#)

Social Media

natural barrier to wind or as a shelter for livestock 🌿

Setos de Campoazávaro (Segovia, Spain) have seen some of these benefits in their land.

This regenerative agriculture project has collaborated with Life Terra for three years, planting 12,000 trees.

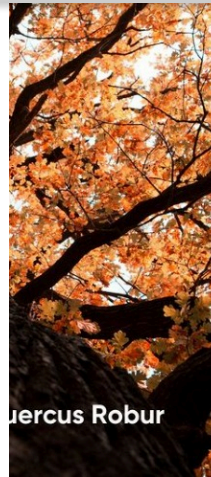
The trees will help the farm to create a natural barrier to wind, protecting the livestock and offering shelter during the hottest and driest periods in summer.

The farm also saw a significant increase in local fauna (such as mice and moles) which increased the presence of the Common kestrel, a local bird at risk of extinction in the area.

Regenerative farming offers a sustainable solution to today's agricultural challenges by prioritizing soil health, water conservation, biodiversity, carbon sequestration, and reduced reliance on synthetic inputs.

Do you own land and would like to plant trees on it? Join us in cultivating a brighter future for agriculture and the planet!

[#regenerativeagriculture](#)



mestera_europe who wouldn't spend a #Valentines date below the shadow of this amazing oak? 🌿❤️

Trees show us their love in many ways. From the air we breathe to the shadow we enjoy in summer, these amazing wonders of nature provide us with multiple benefits every day.

Why not show them the #love back today?

Gift a tree to your loved ones and help us to continue planting green love 🌿

Let a tree "Be your Valentine!" 🌿

1w

26 likes
February 14



We are getting close to our tree number 6 million

We continue to plant trees & engage local communities in taking impactful [#climateaction](#)

+80,000 citizens have joined us in the field to add more green to their neighbourhoods

Who will plant the 6 million one? 😊
[#6milliontree](#)



Do you want to plant trees with us?

On the 18th of February, we will be planting trees on the Kleverbergh regenerative estate near Nijmegen

And we can use your help, because the goal is to plant 1,200 trees that day 🌿🌿

When?
📅 February 18
🕒 1.30pm to 4pm
📍 Location: <https://bit.ly/3SUSUEu>

There will be coffee, tea and some small snacks to keep the energy levels high. We will provide all materials and guidance for the event.

Are you excited to roll up your sleeves and your hands dirty?

Sign up here: <https://bit.ly/3SYzSHm>



Don't forget to follow Life Terra's social media channels to stay up to date with our most recent stories.

Subscribe to the Life Terra Newsletter



Life Terra is co-financed by the European Commission through the LIFE Programme (LIFE19 CCM/NL/001200).

The content of this publication represents the views of the author only and is his/her sole responsibility. The Agency does not accept any responsibility for use that may be made of the information it contains.

Euractiv is the distributor of this newsletter and is one of Life Terra's communication partners.

[Feedback](#) [Unsubscribe](#) [Life Terra](#)

Euractiv Media Network BV: International Press Centre Boulevard Charlemagne 1 Brussels B-1041
Belgium

This email was sent to ottavia.migliavacca@euractiv.com
[why did I get this?](#) [unsubscribe from this list](#) [update subscription preferences](#)
EURACTIV Media Network · Karel de Grotelaan 1 bus 1 · Brussel 1041 · Belgium