



One of them was called Angelica, and I...

Image: Clara Chow "Angelica" (2008), still from two channel digital video

**SELLING OUT
MENG-SHU YOU**

**PERMISSION SLIP
ROY ANANDA**

**SILVERHAND
CLARA CHOW**

EXHIBITION DATES:
26 APRIL - 7 JUNE 2008

ARTIST TALKS:
SATURDAY 24 MAY, 2PM

ASIA-AUSTRALIA ARTS CENTRE
181-187 HAY STREET
SYDNEY NSW 2000

WWW.4A.COM.AU

Meng-shu You, Selling Out

Sydney-based Taiwanese artist Meng-shu You confronts political and cultural issues in her mixed media installations. You works mostly with ceramics, combining various techniques with other media such as paint, wax and wood. Her work often comments on negative effects of mass production and consumption. You has lived in Taiwan, America and Australia and reflects on these different cultural experiences in her work.

Selling Out critically examines today's culture of mass consumption. The ground floor is transformed to look like a commercial shop. Shelves are filled with hundreds of blue and white patterned china pieces and candles shaped like characters from popular culture. **Selling Out** not only comments on the impact of America on Taiwanese culture, but also the cultural challenges arising from living in an age of globalisation.

Meng-shu You was born in I-lan, Taiwan, studied fine arts at Michigan State University in the United States and currently lives in Sydney. She has shown her work around the world, participating in solo and group exhibitions in Taiwan, South Korea, Germany, China, Australia and America.

Roy Ananda, Permission Slip

South Australian artist Roy Ananda's sculptural works celebrate the physical process of creating art. Ananda is constantly reusing and reworking the same set of materials for each new multi-media construction. Every obstacle he encounters during construction presents Ananda with an opportunity for a new, creative solution, which then becomes a part of the structure itself.

Permission Slip is the most recent in a six-year-long series. Each work uses the same materials, reinvented in response

to the previous work and adapted to fit their environment. Ananda says this unstructured process depends on a "constant flow of action and reaction." It allows for "playful or improvised" qualities in his sculptures. The works combine formal elements of high art with a humorous side of popular culture. Ananda's larger-than-life sculptures are influenced by the exaggerated physicality of popular cartoons and movie personalities.

Roy Ananda lives and works in Adelaide. He has exhibited his work throughout Australia in art spaces including the Dianne Tanzer Gallery, Melbourne; Downtown Art Space, Adelaide; The Project Space at the Contemporary Art Centre of South Australia. In 2005 he was included in *Primavera* at the Museum of Contemporary Art, Sydney.

Clara Chow, *Silverhand*

Sydney-based artist Clara Chow explores themes of translation and language barriers in her video works. Chow's family speaks Cantonese and English. In her videos, she uses subtitles in both languages to demonstrate the challenge of translating abstract ideas in the same way as words. Through the videos, the viewer begins to understand Chow's personal struggles with a sense of "apprehension and detachment" from her culture.

Clara Chow's exhibition *Silverhand* includes two video works, 'Angelica' and 'Deconstructive Princess.' *Silverhand* takes its name from a Cantonese phrase, which roughly translates to "having an itching arse." This crude phrase refers to someone who is meddling in other people's business. The pun sets the tone for the two videos.

'Angelica,' Chow's newest work, depicts interviews with the artist's sister and mother about finding a porno video on her brother's mp3 player. The interviews are projected on opposite walls, in English and Cantonese, without any images apart from subtitles. Chow says this presentation "imposes a formality and indifference to the emotional disturbance captured in the topic of conversation." The second work, 'Deconstructive Princess,' is a seven-channel video of deconstructed scenes from a Peking Opera. Chow uses popular culture images to explore translation problems and language barriers. Subtitles act as a unifying visual theme in both videos—critical in one and frustratingly useless in another.

Clara Chow studied at the Sydney College of the Arts. She has exhibited her work at local venues including the University of Sydney and Silverspoon Gallery in Balmain.

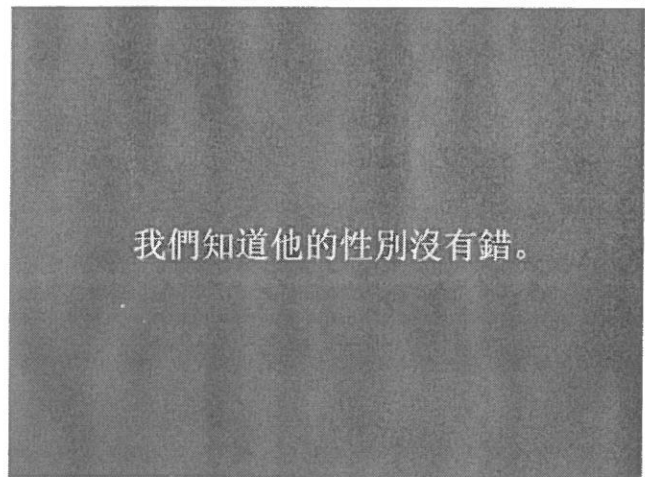
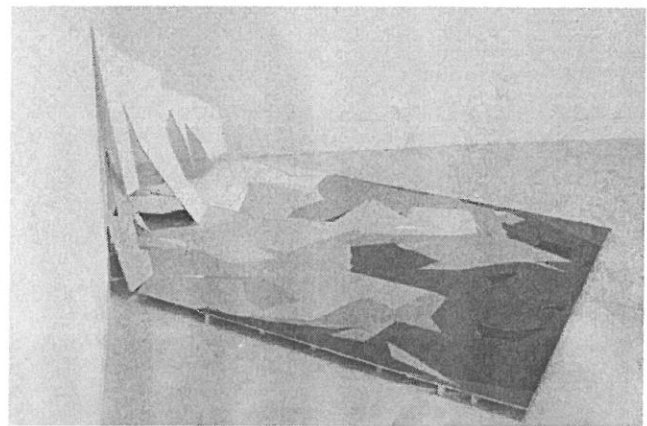
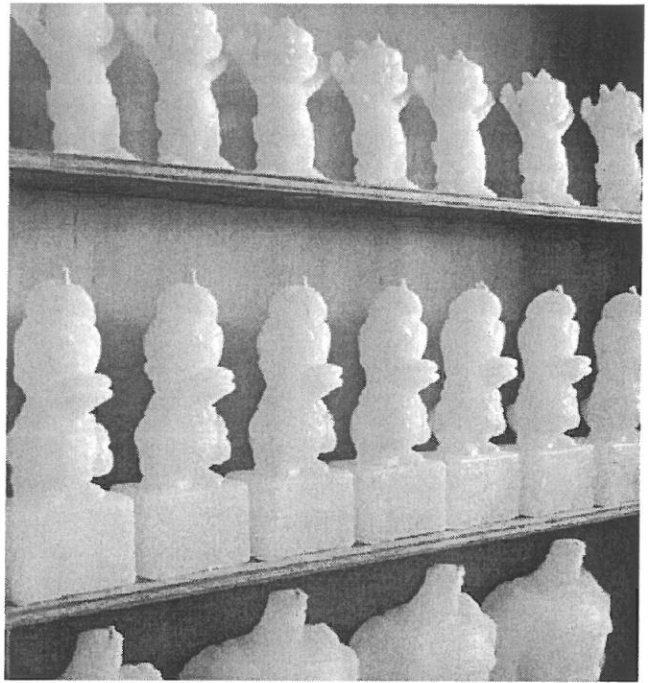


Image: Meg-shu You "Selling Out" (2008), studio view, wax and shelving
Roy Ananda, "Untitled" (2008), acrylic paint on plywood. Courtesy the artist and Dianne Tanzer Gallery, Melbourne.
Clara Chow "Angelica" (2008), digital video still



Government of South Australia
Arts SA

Roy Ananda has been supported by Arts SA

Gallery 4A - Asia-Australia Arts Centre
181-187 Hay Street
Sydney NSW 2000
info@4a.com.au
www.4a.com.au
tel: 02 9212 0380
fax: 02 9281 0873
Open 11am-6pm, Tuesday - Saturday
Closed public holidays



artsnsw



Australia Council

CITY OF SYDNEY

The Asia-Australia Arts Centre gratefully acknowledges its Principal Patrons Geoff and Vicki Ainsworth, Daniel and Lyndell Droga and Dr Dick Quan; Patrons Johnson Pitton Walker, Mr Richard Funston; Benefactor Steensen Varming and Dr Gene and Brian Sherman AM and Friends Ari and Lisa Droga, Phillip Haw, David Droga, Richard and Margie Holden, VisAsia, Annika Droga-Susskind and Isabella and Sam Droga. The assistance of the Commonwealth Government through the Australia Council, its funding and advisory body, the NSW Government through Arts NSW and the City of Sydney.