

ROOMSHEET

JAMIL YAMANI
FAMILY/FAMILIAR

30 September - 1 November 2008

ARTIST STATEMENT

Conceptual themes (this is not in order of presentation):

1. Us/Me

This theme is a personal story, a mark in time of a journey of separation. It hints at an identity severed into two halves. This is because, in my view, there are no perfect communities whether they are religious communities (tradition of various forms) or other utopian ideals, modernist or post-modernist. So the aim here is to show some sense of my own diffidence towards committed communities and freely-assumed associations. Neither of these options is ideal, and yet this theme of 'Us/Me' makes a new appeal to how we can understand identity. If the traditional and modern options are difficult, the post-modern eclecticism of 'multiple identities' is a painful denial of either option. Any "club" or association or possible disassociation is painful or too controlling, yet no association or community has its own loss, to me.

2. Them

Here the work explores a public story of misrepresentation, racism and a new creation of the 'other'. It suggests that here in the Australia in which we live, there are many communities in crisis. The Camden School issue, and the press handling of the crisis, refers to the deep sectarianism in Australia against not Christian or Jewish Schools (or even the older hatred between the Protestants and Catholics), but now, it seems exclusively only to Muslim schools. There is a form of territorialism explored, which resembles a dog pissing on a street corner against another 'other'. But there are so many 'dogs' who also suffered the same before.

3. We

The documentation of my family is the other main theme. I explore the religious rituals in their everyday life, its plain ordinariness and its devotion. There is also its beauty, which is rarely brought to public light. Simple ceremonial washing, traditional, beautiful clothes used for the specific religious weekly events and so forth are shown. The 'We' theme shows that I am committed to my choices and respect my own family's choices, in a loving way. Moreover this theme undermines the [extra]ordinary misrepresentation as explored in the second theme.

181-187 Hay Street
Sydney NSW 2000

Tel: 9212 0380
fax: 9281 0873

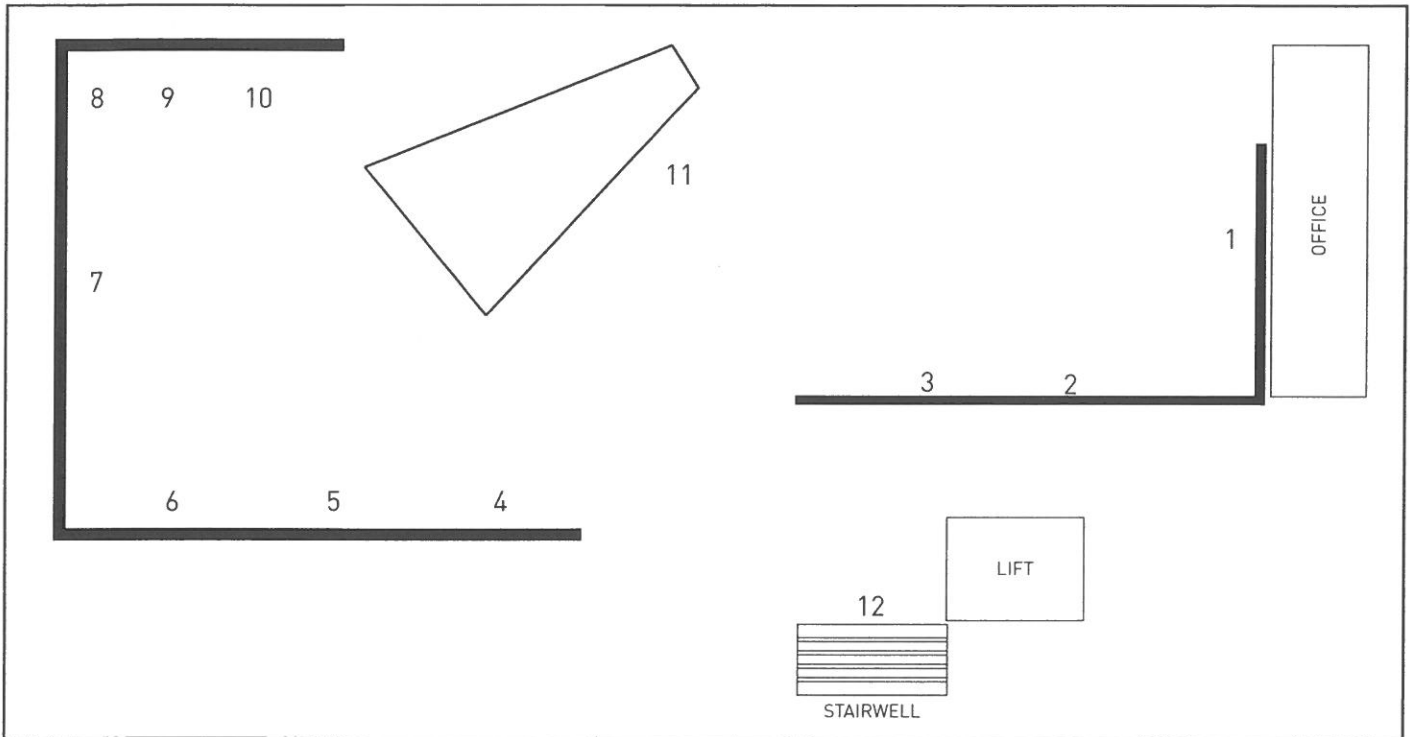
info@4a.com.au
www.4a.com.au

GALLERY4A

ROOMSHEET

JAMIL YAMANI
FAMILY/FAMILIAR

30 September - 1 November 2008



1. Storm
2008
Backlit Lambda Print
1311 x 941

2. Kitchen
2008
Backlit Lambda Print
1311 x 941

3. Outing
2008
Backlit Lambda Print
1311 x 941

4. US/ME
2008
Mixed Media

5. THEM
2008
Mixed Media

6. WE
2008
Mixed Media

7. Shaving
2008
Looping DVD
Dur: 6min

8. Phill
2008
Video Frame Looping
Dur: 2.28 min/sec

9. Figuratively Speaking
Its Non-representational
2008
Video Frame Looping
Dur: 5:00 min/sec 2008

10. Ruby
2008
Video Frame Looping Dur:
3:31 min/sec

11. Standing, Washing,
Reading, Standing
2008
HD Video/Stereo audio, Cloth,
Aluminium, Wheels
Collection of Art & Australia

12. Education
2008
Mini DV, Looping DVD
Dur: 12:10 min/sec

Jamil Yamani thanks Art & Australia, Dr Jocelyn Pixley (Research/Writing), Ahsan Yamani (Carpentry), Louisa Dawson (Titles/Research), Peter Humble (Audio Mixing), Rick Clise (Technical Drawings), Allan Giddy (Installation), Machineability (Fabrication), Stephen & Quinnie Chenn (Master Tailors), Craig Bender (Colour Grading) and the staff of Gallery 4A.
Family/Familiar was developed by Jamil Yamani with the assistance of the RIPE: Art & Australia/ANZ Private Bank Contemporary Art Award, of which he is the 2008 recipient.

181-187 Hay Street
Sydney NSW 2000

Tel: 9212 0380
fax: 9281 0873

info@4a.com.au
www.4a.com.au

GALLERY4A