

TESSA ZETTEL & KARL KHOE
MAKE-DO GARDEN CITY

N. B. More works to be added as exhibition progresses.

1. Make Garden, 2010

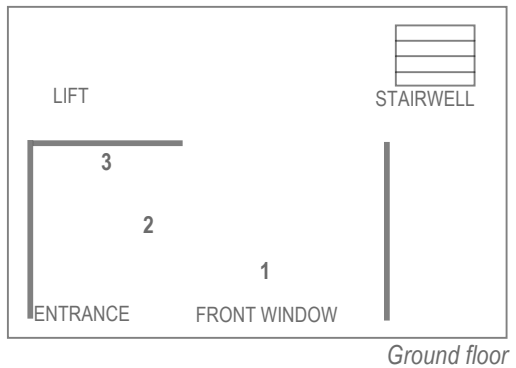
Edible plants, grow lights, cart, various useful objects

2. Do Garden, 2010

Edible water plants, grow light, bread bin, dixie bucket, fish (table, chairs, tea set etc to be unpacked)

3. Close to the Sun, 2010

Gas stove, various edible seedlings, drink containers, desk lamp with grow light, beaker, rice paper & ink, solar-powered light



TESSA ZETTEL & KARL KHOE
MAKE-DO GARDEN CITY

It is not as though he would dare call it a garden – it is merely a make-do[i]

The Haymarket precinct surrounding 4A was once a maze of temporary housing for itinerant market gardeners. *Make-do Garden City* plants a new type of temporary garden on this site, interesting its past histories with possible futures in the context of food crisis and urban sustainability.

Over six weeks, the *Make Garden* mobile workshop will grow a variety of edible plants for distribution to participants and to fee gallery staff. It will also generate a series of living assemblages that respond to conversations the artists have in the unfolding *Do Garden* with invited guests about their gardens – real, past or imagined.

Make-do Garden City is informed by two key texts: Huang Zhouxing's 1674 fictional essay *Record of the Make-do Garden* as interpreted by Stanislaus Fung, and Tony Fry's *Design Futuring* (2009). Fung argues that fictional gardens such as Huang's are not just idealised places that 'guide our efforts towards a better future beyond our concrete and less-than-perfect world' but rather a complex to-an-fro space of historical thinking. It is through a similar 'shuttling' between lived realities and imaginary worlds that *Make-do Garden City* hopes to arrive at a place of sustainment in the here and now.

i] Stanislaus Fung 'Notes on the Make-do Garden', in *Utopian Studies* Vol. 9 no. 1, 1998, pp. 142-8.