



ACCESS RIDER
SPAZIO "ORIENTE OCCIDENTE"

Contacts

Address	Corso Rosmini 58, Rovereto (TN)
Reference person	Diana Anselmo
Office telephone	0464 431660
Mobile phone	+39 3314277310
Email	info@orienteoccidente.it

Building

Entrance/ground floor	Entrance without stairs + lift to first and second floor
1st floor	Conference/chill-out room, dance studio, gender-free changing rooms, toilets + 1 accessible bathroom
2nd floor	Dance studio, kitchen, offices, toilets + 1 accessible bathroom
3rd floor	Office, staircase not accessible



How to reach us

By car	Paid parking available near the space or underground pay car park 160m away in Via Alessandro Manzoni, 5 Rovereto (TN)
By train	Space at 500m walking distance

**BELOW FOR MEASUREMENTS AND MORE DETAILED
INFORMATIONS**

Detailed informations

<p>Entrance/ground floor</p>	<p>There is a 1.5 cm step. The door is 100 cm wide, anti-panic, opens by pulling, the handle is 105 cm high.</p>
	 
<p>Conference room/chill-out room</p>	<p>Access to the room</p> <p>The corridors are wider than 150 cm. The door opens by pulling. The door is 85 cm wide. The floor is parquet.</p> <p>Room details</p> <p>There are two tables, chairs, armchairs, and ottomans in the room. The table is 75 cm high. The light switches are 100 cm high. The switches are recognisable by touch. The intercom is 150 cm high. The fire alarm is 125 cm high. The electrical sockets are between 35 cm - 55 cm high. The type of socket is German. The window handles are 180 cm high</p>
	 

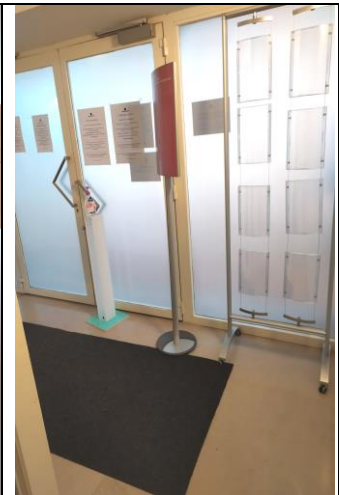
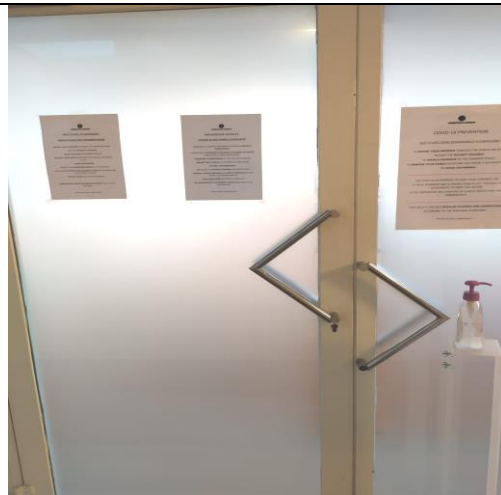
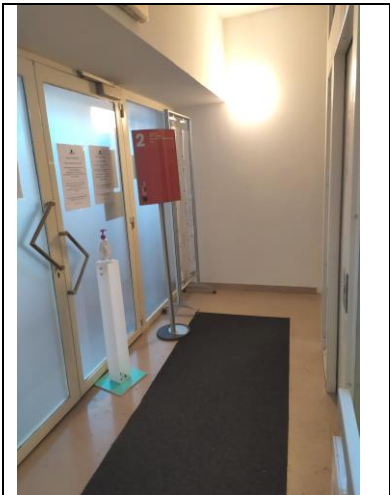
<p>1st floor Dance studio</p>	<p>Antechamber The vestibule door is anti-panic The antechamber door is 90 cm wide.</p> <p>Access to the hall The door is anti-panic and is 138 cm wide. The outside handle is 100 cm high. The inside handle is a 92 cm high panic bar. The air-conditioning control panel is 150 cm high.</p> <p>Details of the hall There is a fire alarm near the emergency exit. The fire alarm is 127 cm high. There is a fire extinguisher and a fire hydrant. The dance hall has a dance floor and moveable mirrors.</p>
	
<p>Changing rooms</p>	<p>There are two changing rooms. The door is 80 cm wide. The handle is 90 cm high. There are lockers. There are benches. The benches are 45 cm high.</p>
	
<p>Toilets</p>	<p>The access door to the toilet corridor is 85 cm wide. The handle is 90 cm high.</p>

	<p>Bathroom</p> <p>The door is 78 cm wide. The toilet is 43 cm high. Lo sciacquone è dietro al wc. The sink is 81 cm high.</p>
--	---

<p>Accessible bathroom</p>	<p>The accessible bathroom is at the end of the corridor on the right. The door is 80 cm wide. The bathroom door closes from the inside.</p> <p>The washbasin is 85 cm high. The mirror is adjustable. The toilet is 55 cm high. The flush is 90 cm high. The shower tray is 87 cm wide and 87 cm deep. The shower seat is 55 cm high. The mixer is 115 cm high. The shower head is adjustable. The minimum height of the shower head is 115 cm. There are grab bars on both sides of the shower.</p> <p>There are two grab bars near the toilet. The toilet is accessible from the right side of the toilet. The flush is to the left of the toilet. There is a hand shower on the left side of the toilet. The hand shower is 52 cm high. There are two pulls for emergency calls. The pulls are near the shower seat and on the left side of the toilet.</p>
-----------------------------------	--

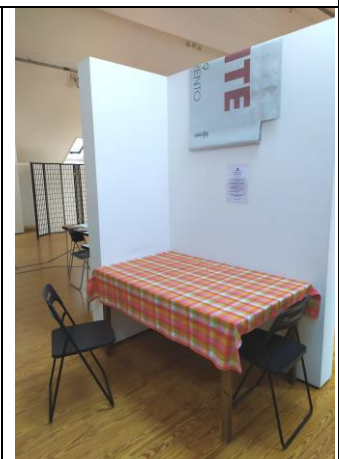
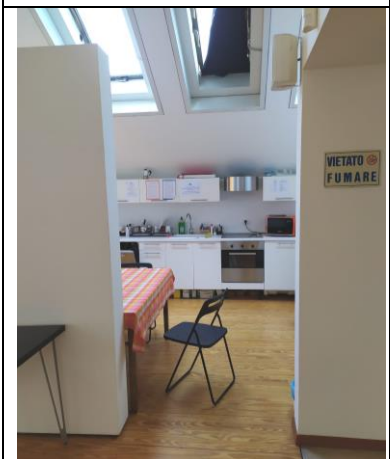


<p>Access to the 2nd floor</p>	<p>The door is 97 cm wide. The handle is 100 cm high. To enter the room there is a 0.5 cm high step. The fire alarm is on the left when entering the door.</p>
--	---



Kitchen

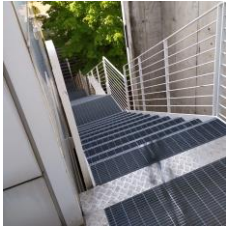
The kitchen is located on the right as you enter the hall.
The kitchen is equipped and available for use.
The hob is induction and the knobs are on the right.



2nd floor Dance studio

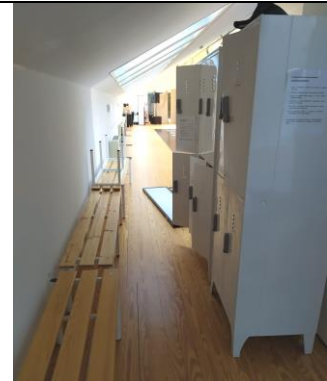
Hall details

The minimum roof height is 160 cm.
Velux are difficult to open.



Changing rooms

The changing room is on the left as you enter the hall.
There are lockers and benches.



Offices

The door to the offices is at the end of the hall, opposite the entrance door.
To enter the offices you have to knock and wait.



Toilets

The access door is 98 cm wide.
The handle is 100 cm high.
The washbasins are 81 cm high.

**Accessible
bathroom**

The door is 99 cm wide.
The bathroom door opens by pulling.
The door cannot be closed without a key.
The toilet is 53 cm high.
The flush is behind the toilet.
The toilet is accessible from the right side of the toilet.
There is a handle on the upper left side of the toilet.
The washbasin is adjustable
The height of the washbasin is between 70-98 cm.
There is a grab bar to the right of the washbasin.

