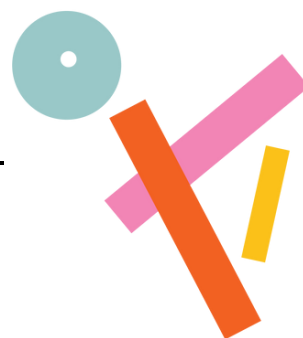


# **ACCESS RIDER** **AUDITORIUM MELOTTI**



## **Contacts**

Address	Corso Bettini 43, Rovereto TN
Contact Person	Diana Anselmo
Office phone	0464 431660
Cell phone	3314277310
Email	<a href="mailto:accessibilita@orienteoccidente.it">accessibilita@orienteoccidente.it</a>

## **Structure**

External access	<ul style="list-style-type: none"><li>• External pavement in porphyry with concave drains</li><li>• Entrance without steps. Elevator to access the basement</li></ul>
Basement	<ul style="list-style-type: none"><li>• Two barrier-free rehearsal rooms</li><li>• Barrier-free restroom</li></ul>
Auditorium	<ul style="list-style-type: none"><li>• The maximum capacity is 407 seats</li><li>• There are 4 wheelchair spaces located in the upper section of the tiered seating</li><li>• There is a ramp to access the stage</li></ul>

## How to reach it

By car	<ul style="list-style-type: none"><li>• Paid parking is available near the venue, or there is paid underground parking 250 meters away at Via Sticcotta 2, Rovereto (TN) (hours: 6 AM - 12 PM)</li></ul>
From the train station	<ul style="list-style-type: none"><li>• On foot, it is 1.2 km</li><li>• By bus, take lines 1 and 2 (outside the station on the right) heading north</li></ul>

## BELOW FOR MEASUREMENTS AND MORE DETAILED INFORMATION

External access	<ul style="list-style-type: none"><li>• The door opens by pulling</li><li>• The entrance door is 240 cm wide</li><li>• The door handle is vertical and is at a height of between 95 cm and 123 cm</li><li>• The force required to open the door is 7 kg</li><li>• The door remains open during performances</li><li>• The ticket counter is 80 cm high</li></ul>
Elevator	<ul style="list-style-type: none"><li>• The door is 90 cm wide</li><li>• The opening measures 109 cm x 209 cm</li><li>• The access to the basement is located at the end of the atrium, on the right</li></ul>
Decompression room	<ul style="list-style-type: none"><li>• It is located in the basement, where the sofas are placed (see photo)</li><li>• It has comfortable seating, soft surfaces, fidget toys and earplugs available</li></ul>



decompression room

## Restrooms

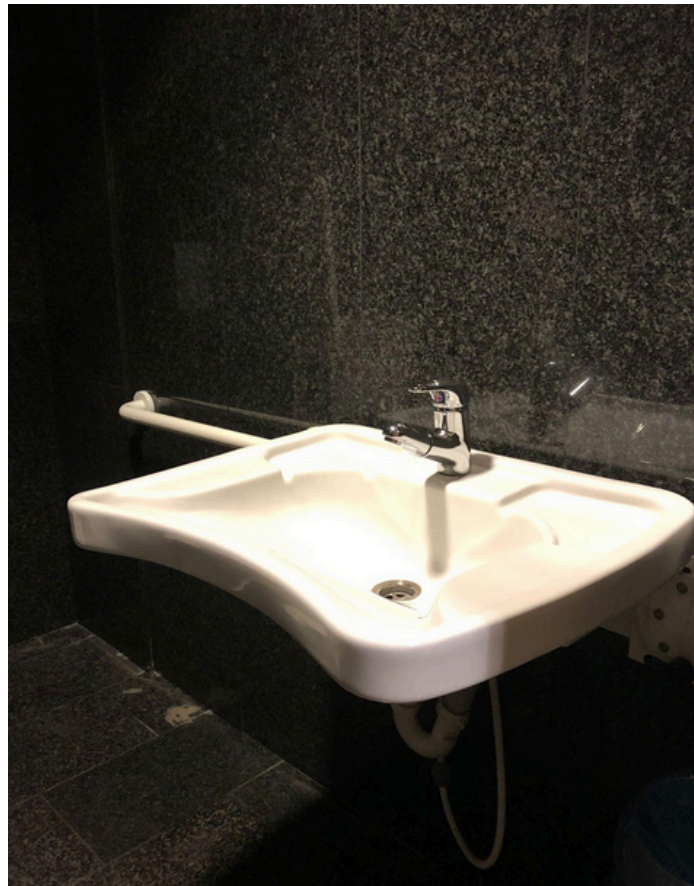
- The restrooms are located in the basement
- The width of the first entrance door is 110 cm
- To open the door, you need to push from the outside and pull from the inside
- The bathroom light is not automatic; it is turned on from the inside, on the right
- The actual bathroom door is 90 cm wide
- The height of the toilet seat is 47 cm
- There is a support grab bar on the side for transferring from the wheelchair to the toilet seat
- There is a handheld shower next to the toilet
- The flush is located on the right side of the toilet at a height of 86 cm
- Emergency pull cords are present
- There is an assistance service to the restrooms
- There is a support rail
- A tilting mirror is not available
- The height of the sink is 81 cm
- A trash bin is provided



Overview of the restrooms (exterior)







Overview of the restrooms (interior)

**Useful information  
for spatial  
orientation**

- There is no floor signage
- A physical map is available
- An evacuation map is also provided