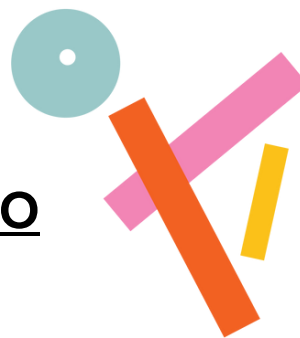


ACCESS RIDER

ORIENTE OCCIDENTE STUDIO



Contacts

Address	Corso Rosmini 58, Rovereto TN
Contact Person	Gloria Stedile
Office Phone Cell Phone	0464 431660 346 323 9503
Email	accessibilita@orienteoccidente.it info@orienteoccidente.it

Structure

access/ground floor	<ul style="list-style-type: none">• Entrance without steps• Elevator to access the first and second floors
1st floor	<ul style="list-style-type: none">• Conference room/chill-out room, dance studio, gender-free changing rooms, restrooms and 1 accessible bathroom
2nd floor	<ul style="list-style-type: none">• Dance studio, kitchen, offices, restrooms and 1 accessible bathroom
3rd floor	<ul style="list-style-type: none">• Office, stairs not accessible

How to reach it

by car	<ul style="list-style-type: none">• Paid parking is available near the venue, or there is paid underground parking 160 meters away at Via Alessandro Manzoni, 5 Rovereto (TN).• From the train station: The venue is 500 meters away, reachable on foot
from the train station	<ul style="list-style-type: none">• The venue is 500 meters away, reachable on foot

**BELOW FOR MEASUREMENTS AND
MORE DETAILED INFORMATION**

detailed information

access/ground floor	<ul style="list-style-type: none">• Between the gallery and the entrance, there is a step of 1.5 cm• The door is 125 cm wide (90 cm with a single leaf), panic bar door, opens by pulling, and the handle is at a height of 110 cm
---------------------	---



Entrance to the building from Corso Rosmini



External entrance of the building



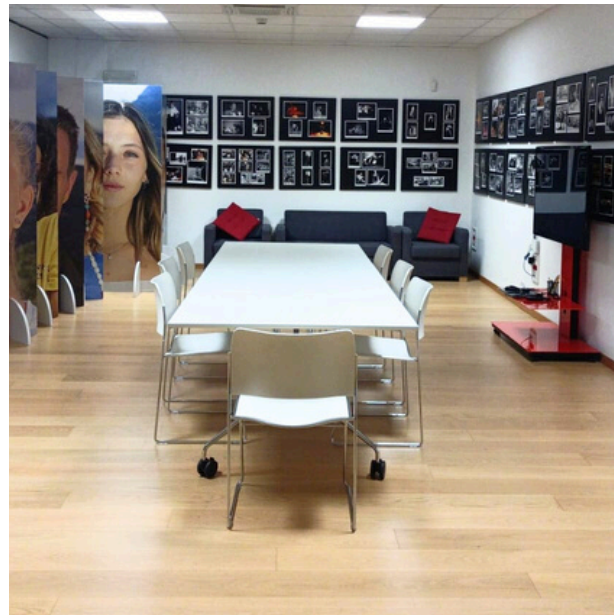
Internal entrance of the building

Conference Room and Chill-Out Room

- The corridors are wider than 150 cm
- The door opens by pulling
- The door is 85 cm wide
- The floor is parquet

Room Details:

- The room contains two tables, chairs, armchairs and a monitor/television
- The table height is 75 cm
- The light switches are located at a height of 100 cm
- The switches are tactilely recognizable
- The intercom is at a height of 150 cm
- The fire alarm is at a height of 125 cm
- The electrical outlets are between 35 cm and 55 cm high. The outlet type is German
- The window handles are at a height of 180 cm



Conference room and chill-out room

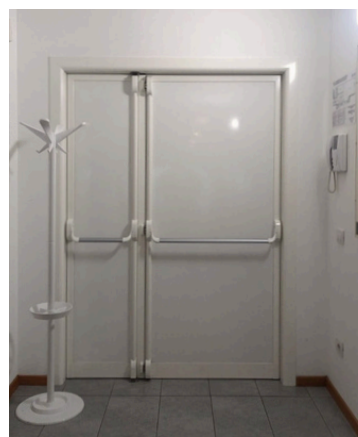


Access to the first floor

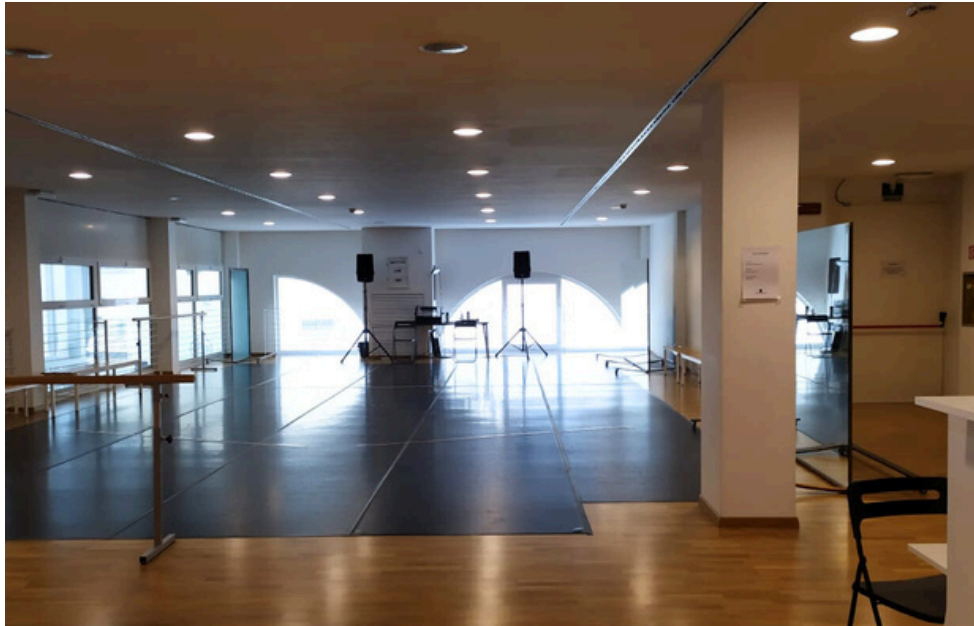
Dance Room, 1st Floor	<p>Antichamber</p> <ul style="list-style-type: none"> • The door of the antechamber is a panic door • The door of the antechamber is 90 cm wide <p>Access to the room</p> <ul style="list-style-type: none"> • The door is a panic door and is 138 cm wide • The outer handle is at a height of 100 cm • The inner handle is a panic bar at a height of 92 cm • The air conditioning control panel is at a height of 150 cm <p>Room Details</p> <ul style="list-style-type: none"> • There is a fire alarm near the emergency exit • The fire alarm is at a height of 127 cm • There is a fire extinguisher and a hydrant • The dance room has a dance carpet and movable mirrors
-----------------------	--



Ante-room



Access to the dance room on the first floor (entrance and exit)



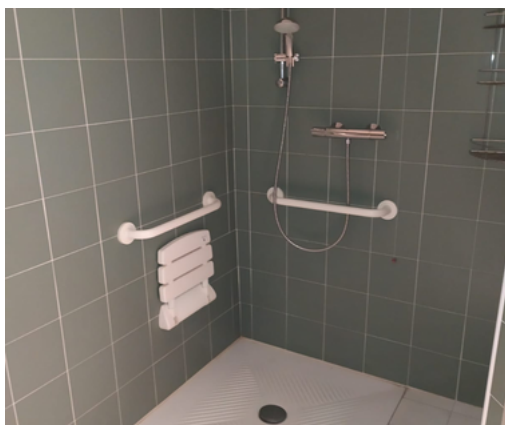
Dance Room on the 1st floor

Changing rooms	<ul style="list-style-type: none">• There are two changing rooms• The door is 80 cm wide• The handle is at a height of 90 cm• There are lockers and benches• The benches are 45 cm high
----------------	---

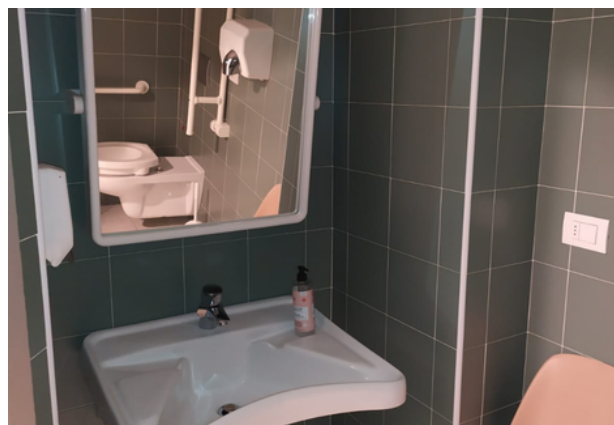


Changing room on the 1st floor

<p>Restrooms on the first floor</p>	<ul style="list-style-type: none">• The accessible restrooms are located on both the first and second floors• The initial access door to the restrooms is 90 cm wide• The actual bathroom door is 85 cm wide• The height of the toilet seat is 55 cm• There are two grab bars near the toilet• The flush is to the left of the toilet, at a height of 90 cm• The handheld shower is at a height of 52 cm• There are two emergency pull cords• The cords are located near the shower seat and on the left side of the toilet• The sink is at a height of 85 cm• The mirror is adjustable• For the shower, the shower tray is 87 cm wide and deep• The shower seat is 55 cm high• The mixer is at a height of 115 cm• The showerhead is adjustable• The minimum height of the showerhead is 115 cm
---	---



Shower tray



Sink



WC



Restroom entrance

Access to the second floor

- The door is 97 cm wide
- The handle is at a height of 100 cm
- To access the room, there is a step that is 0.5 cm high
- The fire alarm is on the left side upon entering through the door



Access to the second floor

Kitchen

- The kitchen is located on the right when entering the room. The kitchen is equipped and available for use
- The cooktop is induction, and the knobs are on the right



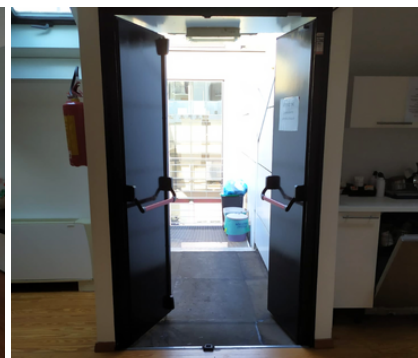
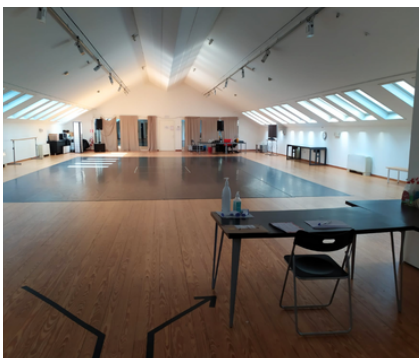
Kitchen

Dance room, 2nd floor

- The minimum ceiling height is 160 cm
- The skylights are difficult to open

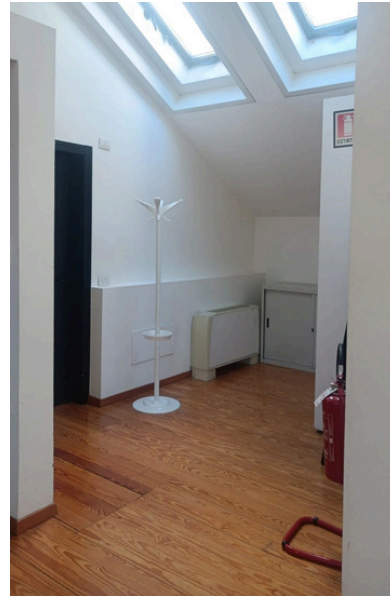


Dance room on the 2nd floor



Details of the dance room on the second floor and emergency exit

Changing rooms	<ul style="list-style-type: none"> • The changing room is located on the left when entering the room • There are lockers and benches
----------------	--



Changing room on the second floor.

Office	<ul style="list-style-type: none"> • The office door is located at the end of the room, opposite the entrance door • To access the offices, you must knock and wait
--------	---



Office entrance

<p>Restrooms on the second floor</p>	<ul style="list-style-type: none"> • The door is 96 cm wide • The bathroom door opens by pulling • The door cannot be closed without a key • The height of the toilet seat is 53 cm • The flush is located behind the toilet • The toilet is accessible from the right side • There is a grab bar on the left side of the toilet • The sink is adjustable and is between 78-90 cm high • There is a grab bar to the right of the sink
---	--



Details of the restrooms on the second floor

<p>Information for spatial orientation</p>	<ul style="list-style-type: none"> • There is no floor signage • A physical evacuation map is available
---	---