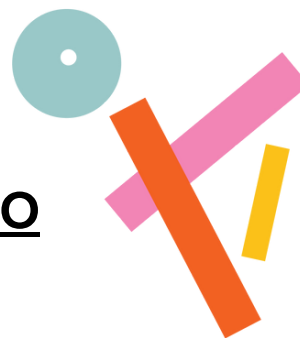


ACCESS RIDER

ORIENTE OCCIDENTE STUDIO



Contacts

Address	Corso Rosmini 58, Rovereto TN
Contact Person	Gloria Stedile
Office Phone Cell Phone	0464 431660 346 323 9503
Email	accessibilita@orienteoccidente.it info@orienteoccidente.it

Structure

access/ground floor	<ul style="list-style-type: none">• Entrance without steps• Elevator to access the first and second floors
1st floor	<ul style="list-style-type: none">• Conference room/chill-out room, dance studio, gender-free changing rooms, restrooms and 1 accessible bathroom
2nd floor	<ul style="list-style-type: none">• Dance studio, kitchen, offices, restrooms and 1 accessible bathroom
3rd floor	<ul style="list-style-type: none">• Office, stairs not accessible

How to reach it

by car	<ul style="list-style-type: none">• Paid parking is available near the venue, or there is paid underground parking 160 meters away at Via Alessandro Manzoni, 5 Rovereto (TN).• From the train station: The venue is 500 meters away, reachable on foot
from the train station	<ul style="list-style-type: none">• The venue is 500 meters away, reachable on foot

**BELOW FOR MEASUREMENTS AND
MORE DETAILED INFORMATION**

detailed information

access/ground floor	<ul style="list-style-type: none">• Between the gallery and the entrance, there is a step of 1.5 cm• The door is 125 cm wide (90 cm with a single leaf), panic bar door, opens by pulling, and the handle is at a height of 110 cm
---------------------	---



Entrance to the building from Corso Rosmini



External entrance of the building



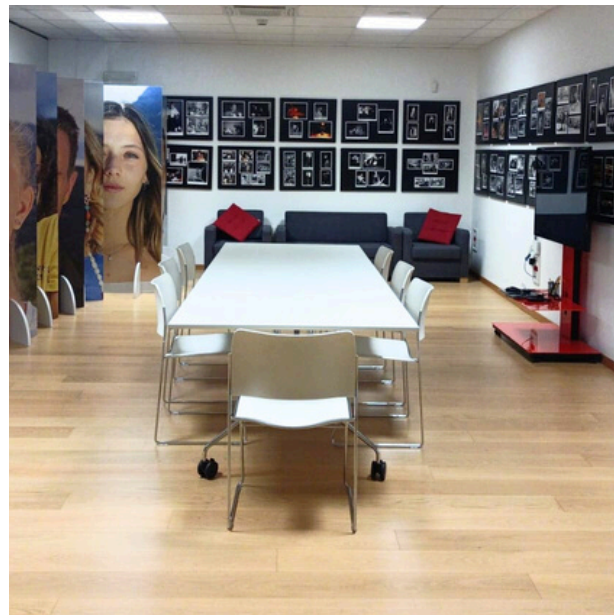
Internal entrance of the building

Conference Room and Chill-Out Room

- The corridors are wider than 150 cm
- The door opens by pulling
- The door is 85 cm wide
- The floor is parquet

Room Details:

- The room contains two tables, chairs, armchairs and a monitor/television
- The table height is 75 cm
- The light switches are located at a height of 100 cm
- The switches are tactilely recognizable
- The intercom is at a height of 150 cm
- The fire alarm is at a height of 125 cm
- The electrical outlets are between 35 cm and 55 cm high. The outlet type is German
- The window handles are at a height of 180 cm



Conference room and chill-out room

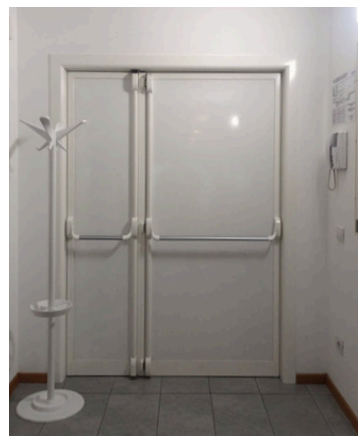


Access to the first floor

<p>Dance Room, 1st Floor</p>	<p>Antichamber</p> <ul style="list-style-type: none"> • The door of the antechamber is a panic door • The door of the antechamber is 90 cm wide <p>Access to the room</p> <ul style="list-style-type: none"> • The door is a panic door and is 138 cm wide • The outer handle is at a height of 100 cm • The inner handle is a panic bar at a height of 92 cm • The air conditioning control panel is at a height of 150 cm <p>Room Details</p> <ul style="list-style-type: none"> • There is a fire alarm near the emergency exit • The fire alarm is at a height of 127 cm • There is a fire extinguisher and a hydrant • The dance room has a dance carpet and movable mirrors
------------------------------	--



Ante-room



Access to the dance room on the first floor (entrance and exit)



Dance Room on the 1st floor

Changing rooms	<ul style="list-style-type: none">• There are two changing rooms• The door is 80 cm wide• The handle is at a height of 90 cm• There are lockers and benches• The benches are 45 cm high
----------------	---



Changing room on the 1st floor

<p>Restrooms on the first floor</p>	<ul style="list-style-type: none"> • The accessible restrooms are located on both the first and second floors • The initial access door to the restrooms is 90 cm wide • The actual bathroom door is 85 cm wide • The height of the toilet seat is 55 cm • There are two grab bars near the toilet • The flush is to the left of the toilet, at a height of 90 cm • The handheld shower is at a height of 52 cm • There are two emergency pull cords • The cords are located near the shower seat and on the left side of the toilet • The sink is at a height of 85 cm • The mirror is adjustable • For the shower, the shower tray is 87 cm wide and deep • The shower seat is 55 cm high • The mixer is at a height of 115 cm • The showerhead is adjustable • The minimum height of the showerhead is 115 cm
-------------------------------------	--



Shower tray



Sink



WC



Restroom entrance

Access to the second floor

- The door is 97 cm wide
- The handle is at a height of 100 cm
- To access the room, there is a step that is 0.5 cm high
- The fire alarm is on the left side upon entering through the door



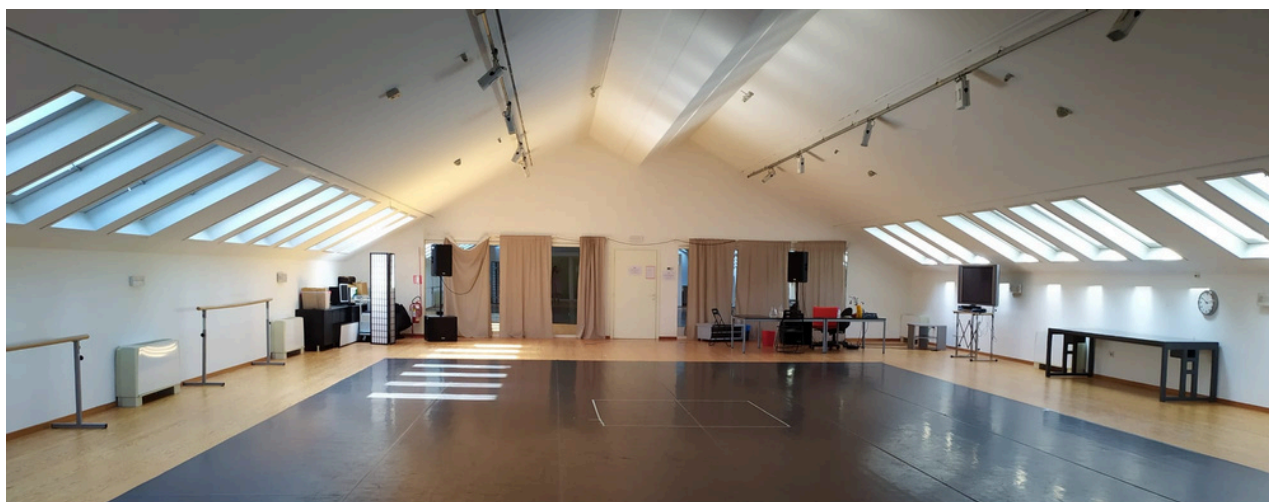
Access to the second floor

<p>Kitchen</p>	<ul style="list-style-type: none"> • The kitchen is located on the right when entering the room. The kitchen is equipped and available for use • The cooktop is induction, and the knobs are on the right
----------------	---

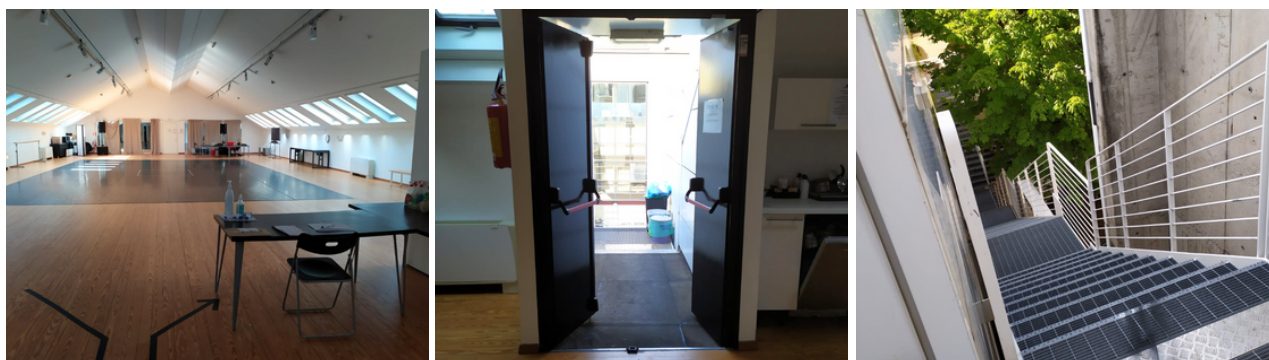


Kitchen

<p>Dance room, 2nd floor</p>	<ul style="list-style-type: none"> • The minimum ceiling height is 160 cm • The skylights are difficult to open
----------------------------------	---

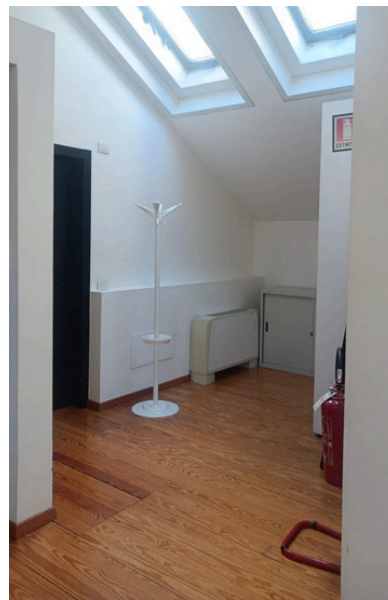


Dance room on the 2nd floor



Details of the dance room on the second floor and emergency exit

Changing rooms	<ul style="list-style-type: none"> • The changing room is located on the left when entering the room • There are lockers and benches
----------------	--



Changing room on the second floor.

Office	<ul style="list-style-type: none"> • The office door is located at the end of the room, opposite the entrance door • To access the offices, you must knock and wait
--------	---



Office entrance

<p>Restrooms on the second floor</p>	<ul style="list-style-type: none"> • The door is 96 cm wide • The bathroom door opens by pulling • The door cannot be closed without a key • The height of the toilet seat is 53 cm • The flush is located behind the toilet • The toilet is accessible from the right side • There is a grab bar on the left side of the toilet • The sink is adjustable and is between 78-90 cm high • There is a grab bar to the right of the sink
---	--



Details of the restrooms on the second floor

<p>Information for spatial orientation</p>	<ul style="list-style-type: none"> • There is no floor signage • A physical evacuation map is available
---	---