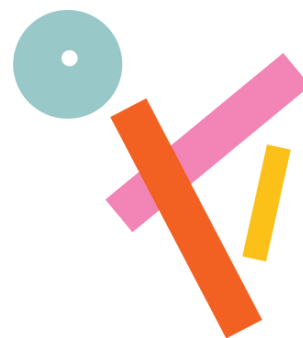


ACCESS RIDER **SMARTLAB**



Contacts

Address	V.le Trento 47/49, 38068 Rovereto TN
Office Phone	0464 431660
Email	accessibilita@orienteoccidente.it

Structure

External access	<ul style="list-style-type: none">• Road with large paving slabs• The entrance ramp is 165 cm wide• The door is 110 cm wide
Internal access	<ul style="list-style-type: none">• The entrance is accessible, with no steps present• There is an entrance with a ramp• The door is 110 cm wide• On the door, from the outside, there is a handle at 100 cm from the ground. Inside, there is a push bar at 95 cm from the ground• The door opens by pulling the handle towards you. To exit, you need to push the push bar

<p>Theatre room</p>	<ul style="list-style-type: none"> • The entrance is accessible, with no steps present • The hall is located to the left of the entrance • The door is 200 cm wide • On the door, from the outside, there is a handle at 1 m from the ground. Inside, there is a push bar at 95 cm from the ground • The maximum capacity is 280 seats • There are 6 wheelchair spaces available
<p>Access from the back</p>	<ul style="list-style-type: none"> • There are 24 steps to reach the ticket office • The hall is located at the top of the stairs to the right

<p>Decompression Room</p>	<ul style="list-style-type: none"> • Behind the orange door next to the restrooms, there is an elevator and stairs that lead directly to the decompression room on level -1 • The room features large windows overlooking the garden and is equipped with comfortable seating, soft surfaces, fidget toys and earplugs
----------------------------------	--



Entrance from the back with 24 steps



Box office



Entrance from the back



Ramp at the main entrance



Main entrance



Internal overview of the main entrance



Overview of the hall from the main entrance. Theater room located on the left

How to reach it

By car	Numerous parking spaces for people with disabilities are available nearby
From the train station	<ul style="list-style-type: none">• It's 2 km on foot• By bus, take lines 1 and 2 (outside the station, on the right) heading north

BELOW FOR MEASUREMENTS AND MORE DETAILED INFORMATION

Detailed information

Restrooms	<ul style="list-style-type: none">• The restrooms are located at the end on the left from the main entrance• There are no steps• The door is 88 cm wide• The height of the toilet is 46 cm• There are grab bars on both sides of the toilet• The flush button is located low, on the left side of the wall• There are emergency pull cords• There is a hand shower or integrated bidet• The height of the sink is 80 cm• The mirror is not adjustable and is located at 123 cm• There is a support point available• There is a waste bin and a container for sanitary waste
-----------	--



Restroom door



Overview of the restrooms (interior)



Sink

Useful information
for spatial
orientation

- There is no floor signage
- The evacuation map is available in physical form