

SPEC SHEET

# 75F® Ceiling Sensor™

High-precision temperature and humidity measurement for increased comfort

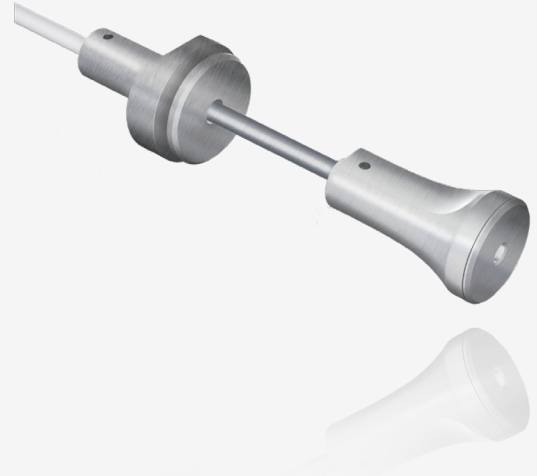


- Accurate temperature readings
- Accurate humidity readings
- Sleek design, low impact aesthetics

# 75F® Ceiling Sensor™

75F's suite of sensor offerings gives building owners the power of IoT-connected devices for optimal efficiency and comfort in spaces where it matters most. This rings true even for wide open spaces or zones without room for a wall-mounted sensor.

The 75F Ceiling Sensor mounts easily to the ceiling with a threaded bush and is adjustable with a set screw, making temperature and humidity readings not only possible in airy spaces, but accurate, too.



## OVERVIEW

The 75F® Ceiling Sensor™ offers high-precision measurement pre-calibrated from the factory for measuring comfort factors of temperature and humidity. The Ceiling Sensor is easily mounted on a ceiling by a threaded bush. The module drop from the ceiling can be adjusted via a set screw.

The Ceiling Sensor uses a proprietary 1-wire protocol to communicate with other devices such as the 75F® Smart Node™.

## KEY FEATURES

- Accurate temperature readings (typical +/-0.2C)
- Accurate humidity readings (typical +/- 2% R.H.)
- 3-wire interface for power and communication
- Can be daisy-chained with other sensors on the 1-wire bus to provide an extensible sensor network

## ADDITIONAL FEATURES

- Sleek design, low impact aesthetics
- Easily mounted on ceiling via threaded bush
- Module drop can be easily adjusted

## APPLICATIONS

- 75F® Dynamic Airflow Balancing™
- 75F® Smart VAV with Reheat™
- 75F® Single Stage Equipment Controls™

## INCLUDED

---

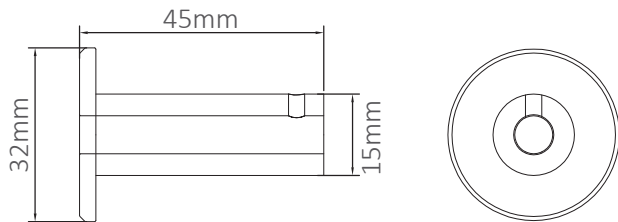
(1) 75F Ceiling Sensor

---

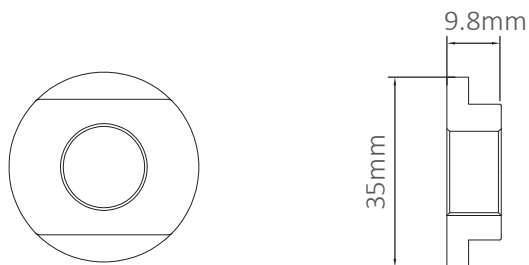
# 75F® Ceiling Sensor™

## MECHANICAL

<b>Dimensions</b>	48mm body length, 28mm max body height, 45mm male bush length, 32mm male bush max height, 20' included wire, 8" extender for drop adjustments
<b>Mounting</b>	(1) threaded bush, requires 15mm hole in ceiling tile
<b>Operating Temp</b>	Operating environment: 0°F – 122°F
<b>Termination</b>	3 pin connector
<b>Accuracy</b>	Humidity (typical +/- 2% RH), temperature (typical +/- 0.2C)



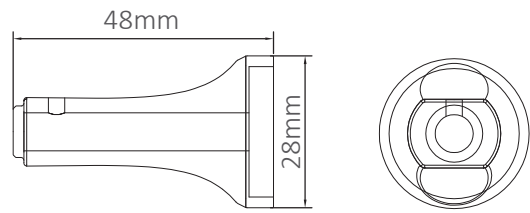
**MALE BUSH**



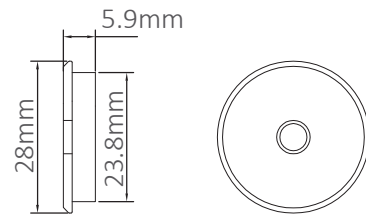
**FEMALE BUSH**

## ELECTRICAL

<b>Power</b>	6.5V DC provided by Smart Node via 3 pin connectors
--------------	---



**BODY**



**BODY CAP**

## COMMUNICATIONS

<b>Wired</b>	Proprietary 1-wire protocol to communicate with master devices
--------------	--