

SPEC SHEET

75F® Ceiling Sensor™

High-precision temperature and humidity measurement for increased comfort

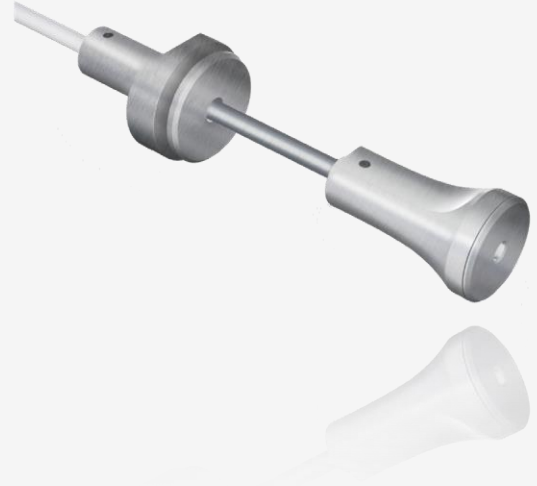


- Accurate temperature readings
- Accurate humidity readings
- Sleek design, low impact aesthetics

75F® Ceiling Sensor™

75F's suite of sensor offerings gives building owners the power of IoT-connected devices for optimal efficiency and comfort in spaces where it matters most. This rings true even for wide open spaces or zones without room for a wall-mounted sensor.

The 75F Ceiling Sensor mounts easily to the ceiling with a threaded bush and is adjustable with a set screw, making temperature and humidity readings not only possible in airy spaces, but accurate, too.



OVERVIEW

The 75F® Ceiling Sensor™ offers high-precision measurement pre-calibrated from the factory for measuring comfort factors of temperature and humidity. The Ceiling Sensor is easily mounted on a ceiling by a threaded bush. The module drop from the ceiling can be adjusted via a set screw.

The Ceiling Sensor uses a proprietary 1-wire protocol to communicate with other devices such as the Central Control Unit, Smart Node, or HyperStat.

KEY FEATURES

- Accurate temperature readings (typical +/- 1F or 0.2C)
- Accurate humidity readings (typical +/- 2% R.H.)
- Sensor bus for power and communication
- Can be daisy-chained with other sensors on the 1-wire bus to provide an extensible sensor network

ADDITIONAL FEATURES

- Sleek design, low impact aesthetics
- Easily mounted on ceiling via threaded bush
- Module drop can be easily adjusted

APPLICATIONS

- 75F® Dynamic Airflow Balancing™
- 75F® Smart VAV with Reheat™
- 75F® Single Stage Equipment Controls™
- 75F® HyperStat™ Remote Sensing

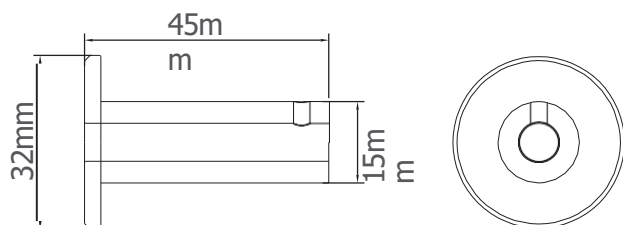
INCLUDED

(1) 75F Ceiling Sensor

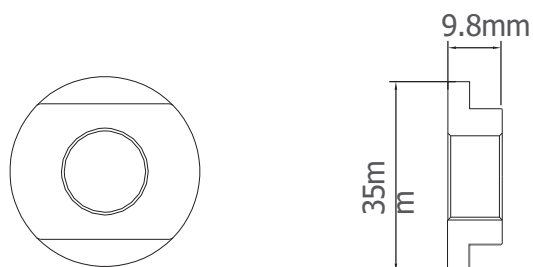
75F® Ceiling Sensor™

MECHANICAL

Dimensions	Body length: 1.89" (48mm)
	Max body height: 1.10" (28mm)
	Male bush length: 1.77" (45mm)
	Male bush max height: 1.26" (32mm)
	Included wire: 20'
	Drop adjustments extender: 8" (203mm)
Mounting	(1) threaded bush, requires 15mm hole in ceiling tile
Operating Temp	0°F – 122°F (-18°C – 50°C)
Termination	3 pin connector
Accuracy	Humidity (typical +/- 2% RH), temperature (typical +/- 1°F or 0.2°C)



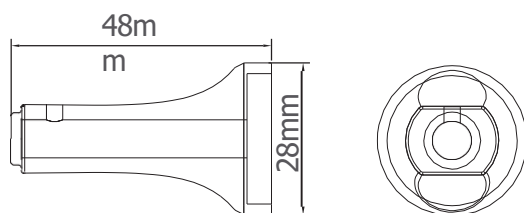
MALE BUSH



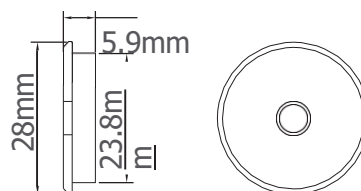
FEMALE BUSH

ELECTRICAL

Power	3.3V DC provided by Smart Node via 3 pin connectors
-------	---



BODY



BODY CAP

COMMUNICATIONS

Wired	Proprietary 1-wire protocol to communicate with master devices
-------	--