

PRODUCT OVERVIEW

Facilisight is 75F's building intelligence suite of web and mobile apps. Facility managers and building owners will use Facilisight hand in hand with application profiles such as 75F Dynamic Airflow Balancing (DAB) or 75F Variable Air Volume (VAV) with Reheat to remotely monitor and control their building portfolio.

The Facilisight application offers invaluable insight into your buildings' performance and simple, intuitive control over complex parameters. 75F's sensors and building management system deliver over a million data points daily per fifty thousand square feet of space, including temperature, humidity, volatile organic compound (VOC), CO₂, light, and sound levels taken every 60 seconds. Facilisight's heatmaps reflect this data in real time, and can help users understand energy performance and how their buildings react to thermal loads.

Beyond superior data visualization, Facilisight makes tailoring building parameters fast and efficient. Alter building and granular schedules, and use tuners to adjust operating algorithms, setup floor plans, and more – all remotely from the web or a mobile device.

FEATURES AND ADVANTAGES

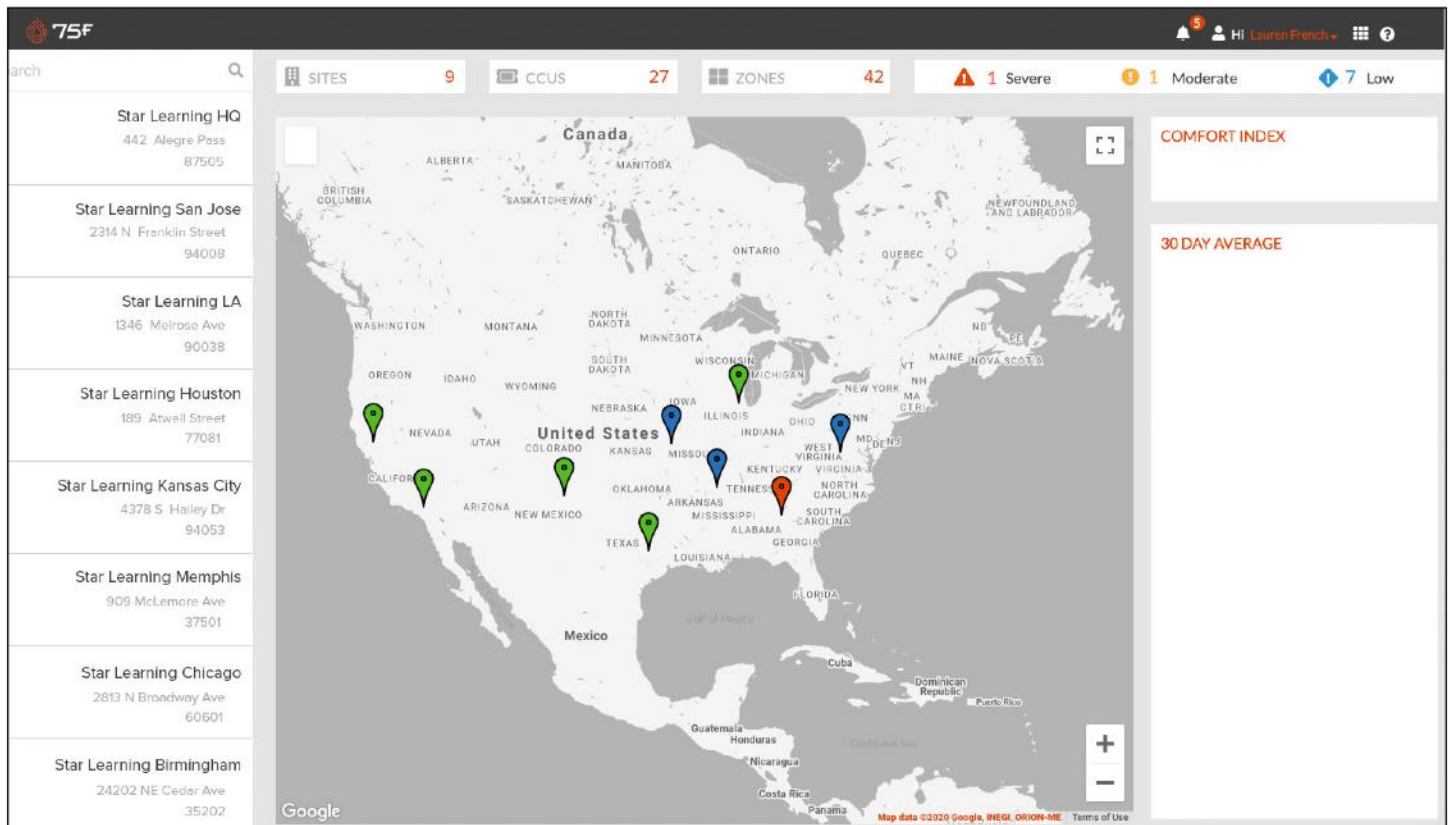
- Portfolio-wide, remote control over building parameters.
- View your buildings' performance in real time with Google map integration.
- Heat maps provide instant insight into how your buildings control thermal loads throughout the day.
- Policy editor allows you to push complex schedules to hundreds of locations with a single click.
- Scheduling feature allows you to mark holidays and implement energy saving across your portfolio.
- Manage user setting, including editing profiles, password and editing or removing additional users.
- Building performance metrics. Compatible with major web browsers, iPhone, iPad and Android.
- Custom Equip Graphics with Common Framework – Enables real-time HVAC visualization with dynamic updates, interactive controls, and intuitive management for better monitoring and decision-making.
- Site Sequencer with Blockly – Visual programming for seamless HVAC automation, enabling easy custom sequences and enhanced interoperability.

COMPATIBLE APPLICATIONS

- Dynamic Airflow Balancing (DAB)
- Variable Airflow Volume (VAV) with Reheat
- Outside Air Optimization (OAO)
- Hydronic and general Proportional Integral Control Loops
- In-Floor Hydronic Heat
- Standalone Single / Multi-Stage Equipment Controls

DASHBOARD, HEATMAPS AND FLOORPLANS

The Facilisight dashboard provides users a high-level overview of their building portfolio. A map with pinpoint markers displays the location of each building to correspond with a sidebar list of sites. From this view, users will also see the number of building sites, Central Control Units (CCUs), and zones under their control, as well as a list of alerts organized by severity.

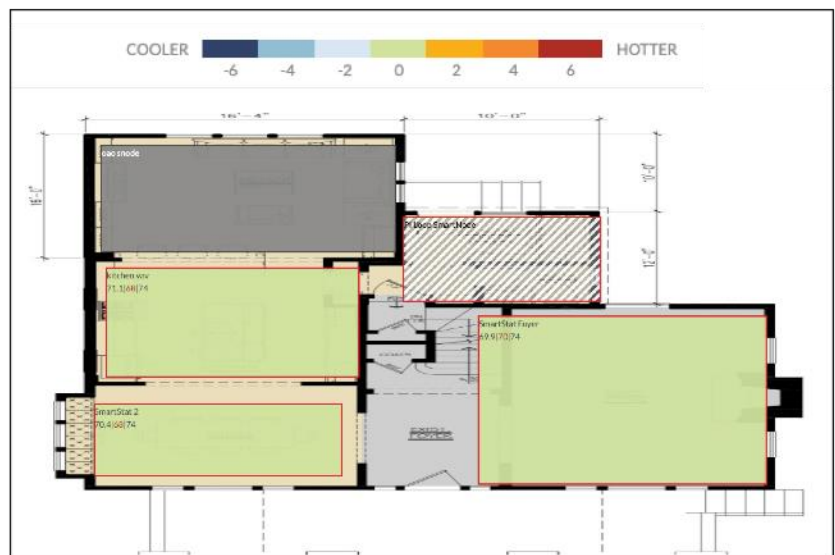


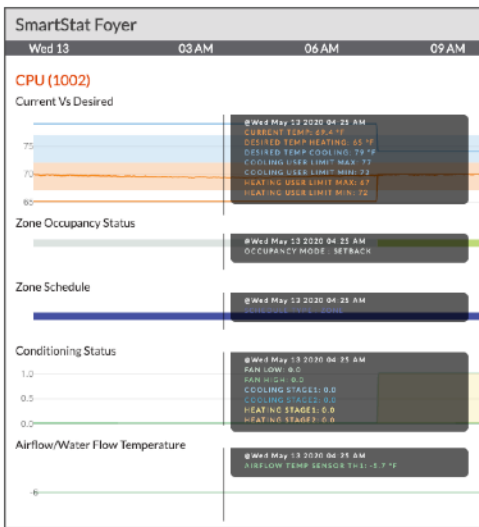
To view a building in detail, select either a pinpoint marker or a site name from the sidebar.

After 75F's solution is installed in a site, creating a heatmap in Facilisight is as simple as uploading an image of your floorplan and dragging and dropping corresponding zones into the correct placement. Users may readjust the size of the zone to fit their floorplan by clicking and dragging zone edges.

Facilisight's heatmaps utilize a rich color scheme to cue users in on real-time conditions in zones. Zones with warm colors, such as orange, are warm zones, and zones with blue colors are cool. The system measures this against desired setpoints – zones that are warmer than a pre-determined desired setpoint by two degrees will be orange, and zones cooler than a desired setpoint by two degrees will be blue.

Zones that fall within deadband (the temperature range in which neither heating nor cooling is needed) will be green. Textures on top of zone colors indicate specialized conditions, such as zones in vacation mode.





To see live datapoints such as zone temperature, humidity or airflow temperature, users need only hover their cursor over the zone. When Facilisight users click on the zone, they can also see all the user intent settings associated with that zone. Clicking on a system icon brings up parameters related to system or building operation. Some examples of this include minimum and maximum humidity settings, schedules, and vacation modes. These intents are editable from the same window.

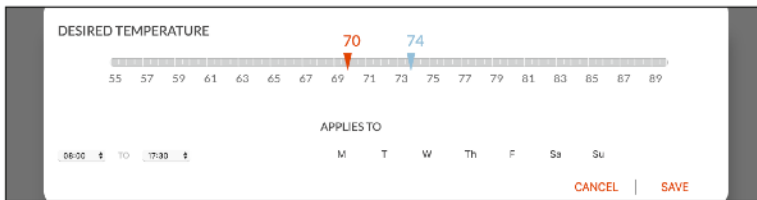
The Facilisight layout makes searching for zones easy for facility managers with a large number of zones in their building. Normally, this would crowd the screen and make each zone very hard to distinguish from the adjoining one. With the search



feature, users can search for a zone by floor, CCU name, or zone name. For example, searching the term “space” will yield all the zones and CCUs with that word in the title. These results will appear in a spotlight format – simply hover your mouse over the highlighted zones to see details. All zones not spotlighted in the search will be unactionable for user interaction.

SCHEDULING, TUNERS AND ADJUSTMENTS

Setting a granular schedule for your building and its zones is a significant source of energy savings and comfort. This feature allows facility managers to relax overarching building parameters during unoccupied hours – overnight, for example, or for days at a time when no one is in the building-- and tailor occupied settings to specific zones within a building.



Setting schedules with Facilisight is simple and intuitive compared to traditional building automation systems (BAS). The top layer of scheduling is the building schedule – these schedule rules will apply to all subsequent zones within that building.

Individual zone schedules can be tweaked, but they must fall within the guidelines time period of the overarching building schedule. In a traditional BAS, this is where scheduling can get cumbersome – if a facility manager wants to edit the building schedule, they must then recommission all the subsequent zone schedules to fit within the new building schedule.

75F's Facilisight is smart enough to give the user the option to automatically force-trim zone schedules that fall underoutside a building schedule, making new building schedules a one-time task. Beyond scheduling, facility managers have editing power over default system settings, such as humidity and CO₂ levels, among others.

If a building owner knows an important brainstorming session is coming up, for example, they may override the default CO₂ value from 1,000 ppm to 700 ppm in the conference room's zone. This tuner would call for mixing higher levels of outside air (OA) in that space, thus lowering the CO₂ value.

TUNERS		CCUS
BUILDING		▼ Demo #2
SYSTEM		
ZON		
MO		
Override Priority: VAV		
zoneCO2Threshold		
Priority No		
1		
2		
3		
4		
5		
6		
7		
8	Module	
9		
10	700	Zone
11		
12		
13		
14	System	
15		
16	Building	
17	Default	

MOBILE APP

Once a floorplan and heatmap have been set up in Facilisight on the web, that portfolio-wide data will be available on a mobile device as well. Tuner and scheduling adjustments made in Facilisight will automatically merge into the mobile view, making for a seamless user interface across devices.

As in the web application, the mobile application will allow users to view heatmaps, search for specific zones and CCUs, navigate system alerts, set schedules, and manage other settings.



USER MANAGEMENT AND SINGLE SIGN-ON

Facilisight supports single sign on for users having a Microsoft or Google account as an alternate to a traditional password. This allows users to sign on with their regular business account rather than having to remember a separate password.

Facilisight users are registered under different role types. Your role will determine your ability to view or edit different sites.

Every building site within Facilisight will belong to an organization. Organization Managers have access to all the sites under an organization, though facility managers are the users in charge of site user management to ensure the places in which people work, play, and learn are safe, comfortable, productive, and sustainable. In Facilisight, facility managers are sorted into primary and secondary roles. Primary facility managers – one per site – may add, edit, or remove secondary facility managers and secondary installers. Secondary facility managers have access to sites assigned to them but may not edit user permissions.

Installers are users who have been identified during a CCU registration in the installation process. When these users log into the Facilisight portal, they do not have access to view all the sites they have been assigned to even across organizations. any sites.