

MIA
CATALOGUE



“MIA in Italian translates to mine.
Celebrating that moment that we
set aside for ourselves every day.
MIA was created as a perfect gift
to yourself for your sanctuary.
The place where we take a breath
and complete our self-care rituals.”

Mia Lake Interiors
Designer



The concept of MIA was first proposed long before xox had opened its doors. We approached Mia Lake Interiors to create a vanity that captured the essence of femininity whilst creating an unforgettable impact.

The MIA vanity takes curves to a new level, bringing softness into your sanctuary. "I wanted it to draw people in" designer Mia Lake says, the soft curves along with the natural stone detailing and benchtop give MIA an old Hollywood feel.

It's not all glamour with the MIA though, as the vanity boasts generous storage in its internal drawers and bespoke mirror cabinets. Black melamine internals and LED lighting are those details that make MIA the timeless statement that she is.

What makes MIA spectacular is her fluted natural stone detail. Each piece of stone is hand-cut and meticulously put in place to create that stunning curve. MIA was designed as a standalone piece, one that sparks conversation and is a joy to utilise every single day as part of your rituals.



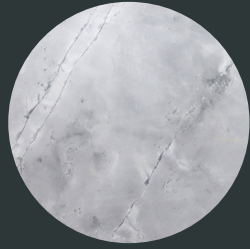
Features

- Soft Close Drawers** Enjoy the peace and quiet with our soft-close drawers. Using industry leading Häfele hardware, soft close technology minimises the stress placed on the cabinet. Thus, extending the life of your vanity.
- Fluted Stone Detail** What makes MIA spectacular is her fluted natural stone detail. Each piece of stone is hand-cut and meticulously put in place to create that stunning curve.
- LED Cabinet Lights** Lighting can often be overlooked, we believe it is an essential inclusion hence why all of our cabinetry features LED lighting. Organise your drawers with ease, any time of the day.
- Black Melamine Internals** As a standard, all xox vanities have black melamine internals. Melamine is a hard resin which results in a durable and highly attractive finish. The material is also waterproof, making it the ideal choice for inside the cabinetry.
- Australian-Made** Rest assured knowing that your vanity is made locally. Each piece is handcrafted to ensure that you receive the best quality product which will last a lifetime. Our vanities are designed and made in Australia.

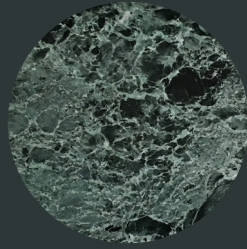
Finishes

MIA is available in five stunning colour and stone combinations as specified by Mia Lake Interiors. The natural stone selected will be featured as the benchtop as well as the fluted detail.

Benchtop Options



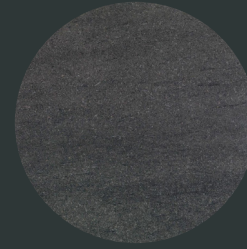
Super White
Marble



Verde Marble



Carrara Marble

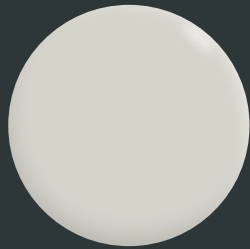


Basalt

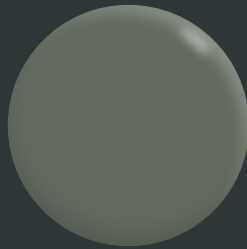


Travertine

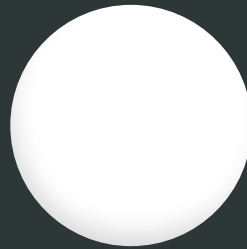
Matching Polyurethane Colours



Palace Stone



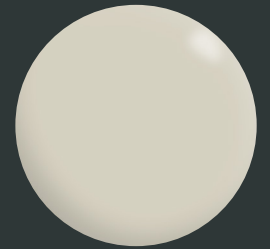
Deep
Bottlebrush



Grey Reflection

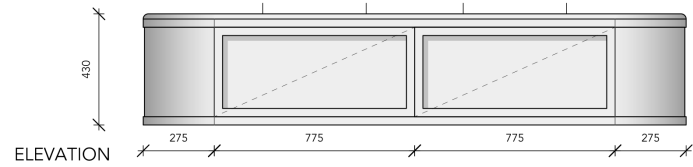
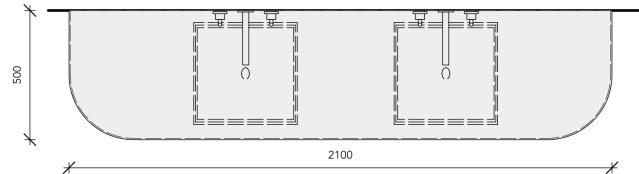


Black Caviar

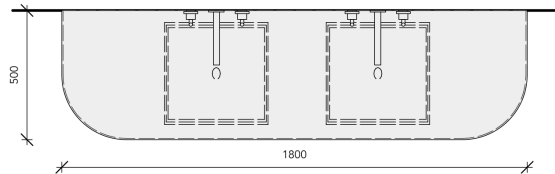


Beige Delight

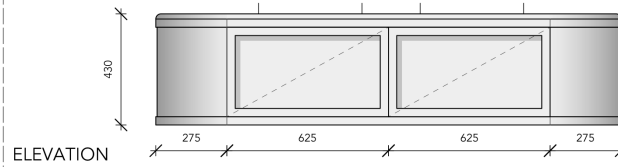
2100



1800

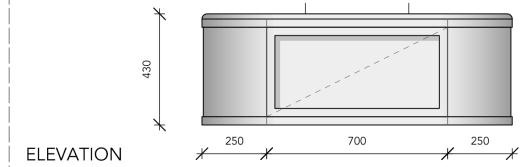
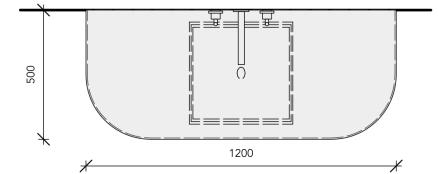


PLAN



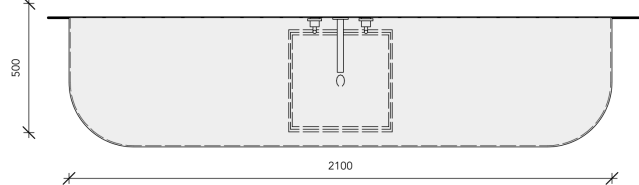
ELEVATION

1200

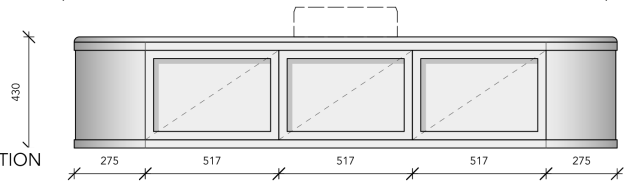


ELEVATION

2100

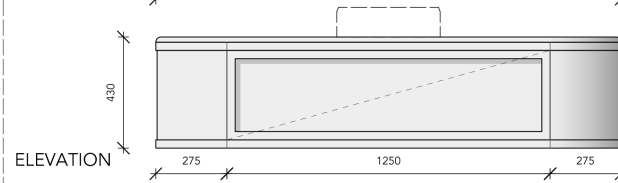
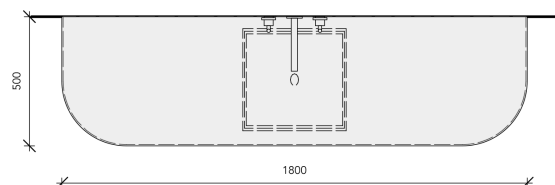


PLAN



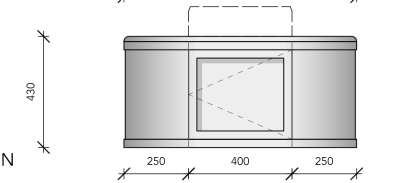
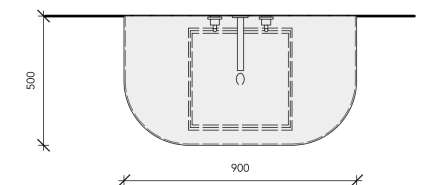
ELEVATION

1800



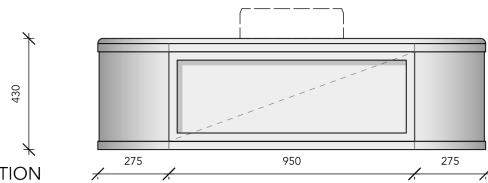
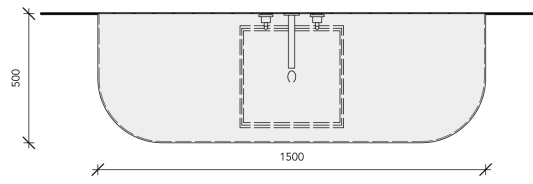
ELEVATION

900



ELEVATION

1500



ELEVATION

Sizing options

Our MIA vanity is available in five sizes and can be accompanied by a matching shaving cabinet.

- 900mm wide, 1-Drawer
- 1200mm wide, 1-Drawer
- 1500mm wide, 1-Drawer
- 1800mm wide, 1-Drawer
- 1800mm wide, 2-Drawer
- 2100mm wide, 2-Drawer
- 2100mm wide, 3-Drawer

