

HOBBY HALL PREMIUM LIST

DIRECTOR IN CHARGE

Candace Blancher

SUPERINTENDENT

Dorinda Jenkins

djenkins1117@hotmail.com

GROUP/CLUB & ENTRIES COORDINATOR

Susan Knapp

wsf.hobbyhallgroups@gmail.com

COLLECTIONS COORDINATOR

Linda Hartley

wsf.collections@gmail.com

DEMONSTRATOR COORDINATOR

Patsy Larson

p.larson67@yahoo.com

HOBBY HALL OFFICE

Beginning Aug. 3, 9 am to noon, and building hours during Fairtime

Phone: (253) 841-5066

COMPETITIVE EXHIBITS OFFICE

Washington State Fair

Hours: Mon.–Fri., 8 am – 4:30 pm

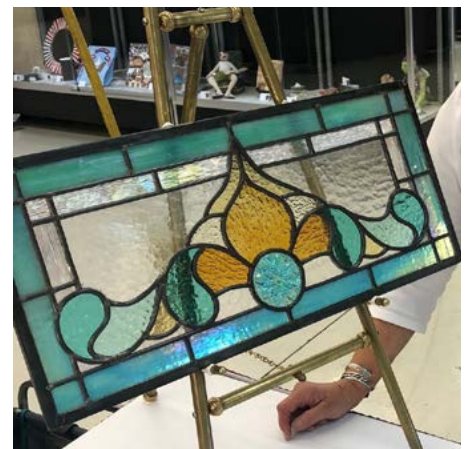
Phone: (253) 841-5074

Email: CompExhibits@thefair.com

WASHINGTON STATE FAIR
SEPT. 4 – 27, 2020
(CLOSED TUESDAYS & SEPT. 9)

110 9th Avenue SW, Puyallup WA 98371-6811

24-Hour Hotline: 253-841-5045 | THEFAIR.COM



2020 HOBBY HALL CALENDAR

SUN	MON	TUE	WED	THU	FRI	SAT
	<p>Online entry registration due for Collections by 10 pm on July 26.</p>		<p>Online entry registration due for Trim-A-Tree Contest Div. 233 by 10 pm on July 26.</p>			
AUG. 16	AUG. 17	AUG. 18	AUG. 19	AUG. 20	AUG. 21	AUG. 22
			<p>ONLINE ENTRY REGISTRATION DUE by 10pm for Handcrafts Divisions 200-232</p>		<p>BRING IN ENTRIES for Handcrafts Divisions 200-233 and Collections 9am-4pm</p>	<p>BRING IN ENTRIES for Handcrafts Divisions 200-233 and Collections 9am-4pm</p>
AUG. 23	AUG. 24	AUG. 25	AUG. 26	AUG. 27	AUG. 28	AUG. 29
<p>BRING IN ENTRIES for Handcrafts Divisions 200-233 and Collections 12pm-6pm</p>						
AUG. 30	AUG. 31	SEPT. 1	SEPT. 2	SEPT. 3	SEPT. 4	SEPT. 5
					<p>OPENING DAY OF FAIR</p>	
SEPT. 6	SEPT. 7	SEPT. 8	SEPT. 9	SEPT. 10	SEPT. 11	SEPT. 12
		<p>FAIR CLOSED</p>	<p>FAIR CLOSED</p>			
SEPT. 13	SEPT. 14	SEPT. 15	SEPT. 16	SEPT. 17	SEPT. 18	SEPT. 19
		<p>FAIR CLOSED</p>				
SEPT. 20	SEPT. 21	SEPT. 22	SEPT. 23	SEPT. 24	SEPT. 25	SEPT. 26
		<p>FAIR CLOSED</p>				
SEPT. 27	SEPT. 28	SEPT. 29	SEPT. 30	OCT. 1	OCT. 2	OCT. 3
<p>LAST DAY OF FAIR</p>		<p>Release of all groups, clubs, entries and collections 9am-8pm</p>	<p>Release of collections 9am-5pm. <i>Release of all other entries 9am-6pm</i></p>			

CONTENTS

2020 CALENDAR	2
Links to important Fair Information	4
Online Entry Registration Instructions.....	4
Entry & Release Schedules.....	5
Hobby Hall Information and Rules	5
Division 203 – Leather Craft	7
Division 204 – Leather Craft, Teachers and Professionals....	7
Division 206 – Decorative Arts.....	8
Division 207 – Decorative Arts, Teachers and Professionals .	8
Division 209 – Handcrafted Soft Toys and Animals	9
Division 210 – Artist Soft Toys and Animals, Teachers and Professionals	9
Division 211 – Doll Houses.....	10
Division 212 – Doll House Accessories & Miniatures	10
Division 213 – Calligraphy	11
Division 214 – Calligraphy, Teachers and Professionals.....	11
Division 215 – Jewelry.....	12
Division 216 – Jewelry, Teachers and Professionals	12
Division 217 – Crafts.....	13
Division 219 – Paper Crafts	14
Division 220 – Paper Crafts, Teachers and Professionals....	14
Division 221 – Holiday Decorations	15
Division 222 – Egg Art.....	15
Division 223 – Stained Glass.....	16
Division 224 – Decorative Glass.....	16
Division 225 – Models.....	17
Division 227 – Lego Building	18
Division 228 – Ceramics and Pottery.....	19
Division 229 – Hand Painted China	20
Division 230 – Hand Painted China, Teachers and Professionals	20
Division 231 – Lapidary Arts.....	21
Division 232 – Beadwork	21
Division 233 – Trim-a-Tree Contest.....	22
Division 243 – Hobby Hall Collections Information	23
Hobby Hall Collections Rules	23

JUNIOR CLASSES ARE AVAILABLE IN THESE DIVISIONS (AGE 15 AND UNDER):

- Division 203 – **Leather Craft**
- Division 215 – **Jewelry**
- Division 219 – **Paper Crafts**
- Division 225 – **Models**
- Division 227 – **Lego Building**
- Division 228 – **Ceramics and Pottery**

DIVISIONS FOR TEACHERS AND PROFESSIONALS:

- Division 204 – **Leather Craft**, Teachers and Professionals
- Division 207 – **Decorative Arts**, Teachers and Professionals
- Division 210 – **Artist Soft Toys and Animals**, Teachers and Professionals
- Division 214 – **Calligraphy**, Teachers and Professionals
- Division 216 – **Jewelry**, Teachers and Professionals
- Division 220 – **Paper Crafts**, Teachers and Professionals
- Division 230 – **Hand Painted China**, Teachers and Professionals

Washington STATE FAIR

DO THE PUYALLUP!

SEPT. 4 – 27, 2020
(CLOSED TUESDAYS & SEPT. 9)

By submitting an entry into The Fair, exhibitors agree to abide by all rules, regulations and entry requirements of The Fair and of the department(s) to which they are submitting their entries. It is important that exhibitors read and be familiar with the rules in this book, as well as the Departmental Exhibitors Rules and Regulations.

Please click here: [Enter a Competition](#) and scroll down to 'ADDITIONAL INFORMATION' to find:

- Departmental Exhibitors Rules and Regulations
- Vehicle Unloading Procedures
- Insurance Information

You may not find it necessary to print this entire Premium List. While we ask that you **read and be familiar with the information in the Premium List prior to entry, please feel free to print just the pages you need.**

Online Entry Registration Instructions

Read below, then register entry information online before bringing items to The Fair.

www.thefair.com

- Read the complete rules, department and division descriptions, and entry information in this Premium List **BEFORE** going to online entry registration.
- Then go to the [ONLINE ENTRY REGISTRATION](#) page (**available starting in May**)
- Click **Register** or **Sign In** (if you have registered in the past)
 - Register using your First Name and Last Name and create a password (*write your password down or make sure it is something you will remember for future use.*) Fill in requested information, including email address. Click **Continue**.
 - Select **Department** ex.: *Hobby Hall*
 - Select a **Division** ex.: *Leather Craft, Division 203*
 - Select a **Class** ex.: *class 1905 - Apparel*
 - Fill in all requested information for the class(es) you are entering, including a **brief Description** ex: jacket
- When all your information is complete, click **Add Entry to Cart** and follow instructions to check out.

(NOTE: If you think you may want to modify your entries, you may *save* your current session and *check out at a later session.* Be sure to **Check Out before the closing date listed for your classes; entries are not submitted to the Fair office until the check out process is complete.)**
- Fill in "yes" at the statement to agree to all the terms and conditions of entry as defined in this Premium List.
- Click **Submit**.
- Please print the online summary/receipt and bring a copy **with your entries** when you bring them to The Fair. Review the receipt to see each class listed for the items you will be bringing.
- For questions regarding online entry registration, contact: 253-841-5074, CompExhibits@thefair.com we will be happy to walk you through the process.

ENTRY & RELEASE SCHEDULES

Also, See Calendar on Page 2

ENTRY:

ONLINE ENTRY REGISTRATION DATES

- **COLLECTIONS** – Division 243
Online entry registration is due by 10 pm:
Sunday, July 26. Applications and photos will be reviewed and applicants will be notified by Aug. 3.
- **TRIM-A-TREE** – Division 233
Online entry registration is due by 10pm;
Sunday, July 26. All entries will be put in a drawing and six will be selected by Aug. 3. You will be notified by Aug. 5 if your entry has been drawn.
- **HANDCRAFTS ENTRIES** – Divisions 200 – 232
online entry registration is due by 10 pm:
Wednesday, Aug. 19.

ENTRY DROP OFF DATES

- **HANDCRAFTS and TRIM-A-TREE ENTRIES** – Divisions 200 – 233
Bring your entry items and online entry summary/receipt.
Friday, Aug. 21, 9 am – 4 pm,
Saturday, Aug. 22, 9 am – 4 pm, or
Sunday, Aug. 23, 12 pm – 6 pm
Walk-in entrance is through the Gold Gate. If you have heavy or oversized items you may drive through the Gold Gate. The Hobby Hall is on the second floor of the Pavilion.
- **COLLECTIONS**
See information on pages 23–24.

ITEMS RELEASED:

RELEASE DATES AND TIMES

- **GROUPS AND CLUBS RELEASED:**
Tuesday, Sept. 29, 9 am – 8 pm
- **COLLECTIONS RELEASED:**
Tuesday, Sept. 29, 9 am – 8 pm, or
Wednesday, Sept. 30, 9 am – 5 pm
- **ALL OTHER ENTRIES RELEASED:**
Tuesday, Sept. 29, 9 am – 8 pm, or
Wednesday, Sept. 30, 9 am – 6 pm
- **ITEMS WILL NOT BE STORED IF THEY ARE NOT PICKED UP. ANYTHING REMAINING AFTER WEDNESDAY, SEPT. 30 WILL BE DONATED TO CHARITY OR DISCARDED.**

HOBBY HALL INFORMATION AND RULES

WAYS TO PARTICIPATE

The Hobby Hall offers a place for amateur craftspersons, collectors and hobbyists to meet and display their crafts. The Hobby Hall consists of four separate sections: There is no entry fee. You may participate in:

A. HANDCRAFTED ENTRIES

Enter your handcrafted items.

- For all Handcrafted Entries, Divisions 200 – 233.
- Items will be judged, then displayed during The Fair.
- Please read Hobby Hall class and entry information.
- **MODEL or DOLL HOUSE EXHIBITORS**
Due to space limitations, it is required to register the size of your model or dollhouse. Please contact the Hobby Hall office, between Aug. 3 - 19, Mon. – Fri., 9 am -12 pm to register the size of your model or dollhouse. No size limit (except dioramas).
Hobby Hall office: (253)841-5066

B. COLLECTIONS

Display and share your collection with Fair guests.

- Submission of application must be accompanied with photos of the collection.
- See information and collections application on pages 23–24 of this book.
- Collections applications are due by July 26 via mail, email or delivered to The Fair's administration office.
wsf.collections@gmail.com

AWARDS

Each division that has at least two exhibitors, if merited, will have a Grand Champion rosette and prize awarded to the most outstanding entry of that division. A Reserve Grand Champion Rosette will also be given in each qualifying division. There may be one Blue (1st), one Red (2nd) and one White (3rd) ribbon given in each class. Premiums will be awarded as listed for each division and mailed in November. Other awards will include Honorable Mention, Award of Merit, and Special Awards. Only Grand Champion, Reserve Grand Champion, Award of Merit, Blue (1st) and Red (2nd) ribbons will receive money or prize premiums. A peoples' choice ribbon is awarded daily in both adult and junior collections.

ABSOLUTELY NO INFORMATION ON PLACINGS OR AWARDS WILL BE GIVEN PRIOR TO THE FAIR'S OPENING DAY.

DISPLAYS

All award-winning entries will be displayed, and every effort will be made to display all other entries. However, we reserve the right to withhold non-award winning entries from display. The Fair reserves the right to not accept any material or

remove any material from display at any time, for any reason and at their own discretion. Items not displayed will be held in a secure storage area and the entrant will be called prior to The Fair opening. Entries cannot be accepted or returned by mail or common carrier.

JUDGING

Judges are selected from professionals or highly accredited amateur artists working within their field of expertise. Neither paid Fair employees nor volunteers are eligible to judge in the department for which they work. Paid Fair employees or volunteers who judge any show or contest outside the department they work for must be pre-approved by their department supervisor. Fair exhibitors, including exhibiting employees, are not eligible to judge in their entry divisions.

RECEIVING AND RETURN

The Hobby Hall is located on the second floor of the Pavilion. Walk in entrance is through the Gold Gate. For oversized or heavy items, you may drive through the Gold Gate on entry days. Please refer to the Entry and Release Schedules on page 2 and 5 for entry and release dates and times.

HOBBY HALL HANDCRAFTS ENTRIES

The Washington State Fair Departmental Exhibitors Rules and Regulations (link on page 3) governing all departments of The Fair are to be observed with a few additions.

1. Entry registration must be made online for all divisions by entry deadline. See page 4 for Online Entry Registration step-by-step instructions and page 2 for calendar of dates.
2. All entries should be brought into the Hobby Hall by the exhibitor. If it is necessary for someone else to bring the entry in, **the entry must be pre-registered online prior to the entry deadline or properly labeled with Division and Class numbers by the exhibitor.**
3. No entry fees will be charged.
4. All articles must be the handwork of an individual exhibitor. They must be finished within the last **two years**. No article can be exhibited a second year. **SOILED OR OBVIOUSLY USED ITEMS WILL NOT BE ACCEPTED.**
5. **ALL ITEMS WILL BE PLACED IN THE MOST SUITABLE CLASS.** Each entrant shall be limited to ONE ENTRY PER CLASS, as to enter more would, in effect, be competing against oneself. Entries may be reclassified by staff or judges.
6. The "OTHER" class will only be used if the item does not fit within any other class in a division.
7. Items that belong in one Division (ie, wood working) will not be accepted in another Division (ie, crafts).

8. All awards need not necessarily be awarded in each class at the discretion of the judge.
9. The Hobby Hall is mainly for amateur craftspersons to compete and exhibit their work. The Fair considers the following as professionals:

Anyone who makes more than \$4,000 per year from the sale of the judged craft item.

Anyone who has a certified teaching certificate for that craft.

Anyone who is paid to demonstrate that craft where supplies or finished works are sold.

Anyone who has won the Grand Champion for 2 consecutive years in that division must enter as a professional the following year.

A professional craftspersons may not enter a craft item from their profession into any amateur division (ie. a professional of hand painted china may not enter a hand painted ornament in the 'Holiday Decorations' division).

10. Divisions for teachers and professionals are offered for Leather Craft, Decorative Arts, Soft Toys and Animals, Calligraphy, Jewelry, Paper Crafts and Hand Painted China.
11. If you have won the Grand Champion for two consecutive years in a division, you will NOT BE ALLOWED to enter that division for one year.
12. Junior divisions are offered in Leather Craft, Jewelry, Paper Crafts, Models, Lego Building and Ceramics and Pottery. Juniors choosing to enter other divisions will be competing with adults.
13. All items placed on display must remain for the full length of The Fair.
14. The Washington State Fair assumes no responsibility for loss or damage. Every reasonable precaution will be used to protect items on display.
15. No "For Sale" cards will be allowed on exhibits or in the building.

Please read the Washington State Fair Departmental Exhibitors Rules and Regulations, link on page 4, and Hobby Hall Rules on pgs. 5-6. Exhibitors must adhere to the general rules and the specific rules below. For Entry and Release dates see calendar, page 2.

DIVISION 203 – LEATHER CRAFT

Entries will be judged for design, technique and overall appearance.

ADDITIONAL AWARDS – ADULTS:

Grand Champion – Adult
Rosette plus \$100

Reserve Grand Champion – Adult
Rosette plus \$25

ADDITIONAL AWARDS – JUNIORS:

Grand Champion – Junior
Rosette plus \$25

In addition, the Junior Grand Champion will receive a \$50 Gift Certificate from the Puget Sound Leather Artisan's Co-op (PSLAC)

Reserve Grand Champion – Junior
Rosette plus \$15

In addition the Junior Reserve Grand Champion will receive a \$30 Gift Certificate from the Puget Sound Leather Artisan's Co-op (PSLAC)

JUNIORS

(Under 16 years old)

Class	1st	2nd
1825 JUNIOR LEATHER BURNING.....	\$10	\$5
1828 JUNIOR HOUSEHOLD ITEM.....	\$10	\$5
1830 JUNIOR LEATHER, OTHER.....	\$10	\$5

ADULTS

(16 years old and older)

Class	1st	2nd
1850 PICTURE.....	\$10	\$5
1855 TOOLED ITEM.....	\$10	\$5
1895 STAMPED ITEM.....	\$10	\$5
1898 LEATHER BURNING.....	\$10	\$5
1902 HOUSEHOLD ITEM.....	\$10	\$5
1905 APPAREL/ACCESSORY.....	\$10	\$5
1910 UN-TOOLED/BRAIDING.....	\$10	\$5
1915 NATIVE AMERICAN STYLE ITEM.....	\$10	\$5
1920 OTHER LEATHERCRAFT.....	\$10	\$5

DIVISION 204 – LEATHER CRAFT, TEACHERS AND PROFESSIONALS

Entries will be judged for design, technique and overall appearance.

ADDITIONAL AWARDS:

Grand Champion –
Rosette plus \$100

Reserve Grand Champion –
Rosette plus \$25

Class	1st	2nd
1930 PICTURE.....	\$10	\$5
1932 TOOLED ITEM.....	\$10	\$5
1940 ALBUM, SCRAPBOOK.....	\$10	\$5
1946 HOUSEHOLD ITEM.....	\$10	\$5
1952 APPAREL/ACCESSORY.....	\$10	\$5
1954 UN-TOOLED/BRAIDING.....	\$10	\$5
1960 LEATHER BURNING.....	\$10	\$5
1964 LEATHER WITH OTHER MEDIUM.....	\$10	\$5
1965 NATIVE AMERICAN STYLE ITEM.....	\$10	\$5
1966 OTHER LEATHERCRAFT.....	\$10	\$5

continued...

Please read the Washington State Fair Departmental Exhibitors Rules and Regulations, link on page 4, and Hobby Hall Rules on pgs. 5–6. Exhibitors must adhere to the general rules and the specific rules below. For Entry and Release dates see calendar, page 2.

DIVISION 206 – DECORATIVE ARTS

If needed for display purposes, correctly proportioned easel/plate stand must be provided by exhibitor.

Decorative painting entries will be judged for overall effect, color coordination, neatness, blending and line work, and finish (back also).

For leather painting, enter Leather Craft Division 203.

ADDITIONAL AWARDS:

Grand Champion –
Rosette plus \$100

Reserve Grand Champion –
Rosette plus \$25

Class		1st	2nd
2010	ROSEMALING	\$10	\$5
2002	STROKE WORK	\$10	\$5
2020	CHRISTMAS MOTIF	\$10	\$5
2055	OTHER HOLIDAY MOTIFS	\$10	\$5
2080	GENERAL DECORATIVE ARTS ON METAL SURFACES	\$10	\$5
2085	GENERAL DECORATIVE ARTS ON PORCELAIN/GLASS SURFACES	\$10	\$5
2015	GENERAL DECORATIVE ARTS ON WOOD ..	\$10	\$5
2070	GENERAL DECORATIVE ARTS ON GOURD ..	\$10	\$5
2095	GENERAL DECORATIVE ARTS ON ROCK ...	\$10	\$5
2090	GENERAL DECORATIVE ARTS ON OTHER SURFACES	\$10	\$5

DIVISION 207 – DECORATIVE ARTS, TEACHERS AND PROFESSIONALS

If needed for display purposes, correctly proportioned easel/plate stand must be provided by exhibitor.

Decorative Painting entries will be judged for overall effect, color coordination, neatness, blending and line work and finish (back also).

For leather painting, enter Leather Craft Division 204.

ADDITIONAL AWARDS:

Grand Champion –
Rosette plus \$100

Reserve Grand Champion –
Rosette plus \$25

Pacific Palette Rosette

Class		1st	2nd
2100	ROSEMALING	\$10	\$5
2102	STROKE WORK	\$10	\$5
2120	CHRISTMAS MOTIF	\$10	\$5
2125	OTHER HOLIDAY MOTIF	\$10	\$5
2180	GENERAL DECORATIVE ARTS ON METAL SURFACES	\$10	\$5
2105	GENERAL DECORATIVE ARTS ON PORCELAIN/GLASS SURFACES	\$10	\$5
2132	GENERAL DECORATIVE ARTS ON WOOD ..	\$10	\$5
2145	GENERAL DECORATIVE ARTS ON GOURDS ..	\$10	\$5
2110	GENERAL DECORATIVE ARTS ON OTHER SURFACES	\$10	\$5

continued...

Please read the Washington State Fair Departmental Exhibitors Rules and Regulations, link on page 4, and Hobby Hall Rules on pgs. 5–6. Exhibitors must adhere to the general rules and the specific rules below. For Entry and Release dates see calendar, page 2.

DIVISION 209 – HANDCRAFTED SOFT TOYS AND ANIMALS

No large accessories, such as chairs, will be accepted.

Entries will be judged for workmanship and general appearance. Entries may be no more than 40" in **height plus width**.

ADDITIONAL AWARDS:

- Grand Champion –
Rosette plus \$100
- Reserve Grand Champion –
Rosette plus \$25
- Best in Each Category –
Ribbon

SOFT TOYS

Doll clothes should be entered in the Home Arts Dept. under the appropriate division (crochet, knitting, sewing, etc.)

Class	1st	2nd
3000 STUFFED FABRIC OR FUR ANIMAL	\$10	\$5
3010 STUFFED FABRIC DOLL	\$10	\$5
3020 KNIT ANIMAL	\$10	\$5
3025 KNIT DOLL/TOY.....	\$10	\$5
3030 CROCHET ANIMAL	\$10	\$5
3035 CROCHET DOLL/TOY.....	\$10	\$5
3036 RUBBER BAND ANIMAL/DOLL/TOY	\$10	\$5
3038 NEEDLE FELT ITEM	\$10	\$5
3040 OTHER SOFT TOYS	\$10	\$5

HANDCRAFTED ANIMALS

Animal and clothing **MUST** be made by exhibitor. Small accessories, such as hats and gloves, may be purchased.

Class 1st2nd 3400	JOINTED, FROM A PATTERN (Mohair or acrylic).....	\$10	\$5
3405	NON-JOINTED, FROM A PATTERN (Mohair or acrylic).....	\$10	\$5
3410	JOINTED, FROM ORIGINAL DESIGN (Mohair or acrylic).....	\$10	\$5
3415	NON-JOINTED, FROM ORIGINAL DESIGN (Mohair or acrylic).....	\$10	\$5
3470	OTHER	\$10	\$5

DIVISION 210 – ARTIST SOFT TOYS AND ANIMALS, TEACHERS AND PROFESSIONALS

Original designs only, no kits.

No large accessories, such as chairs, will be accepted.

Entries will be judged for workmanship and general appearance. Entries may be no more than 40" in **height plus width**.

ADDITIONAL AWARDS:

- Grand Champion –
Rosette plus \$100
- Reserve Grand Champion –
Rosette plus \$25

Class	1st	2nd
3482 LESS THAN 10"	\$10	\$5
3484 10" TO UNDER 16".....	\$10	\$5
3486 16" UP TO 36"	\$10	\$5
3488 VIGNETTE	\$10	\$5
3492 OTHER.....	\$10	\$5

Please read the Washington State Fair Departmental Exhibitors Rules and Regulations, link on page 4, and Hobby Hall Rules on pgs. 5–6. Exhibitors must adhere to the general rules and the specific rules below. For Entry and Release dates see calendar, page 2.

DIVISION 211 – DOLL HOUSES

All furniture/accessories must be secured with glue, putty, etc.

Entries will be judged for:

Workmanship	40%
Originality	20%
Design	20%
Attention to Scale	20%

Houses must be brought in and set up by exhibitor. Plexiglas covers over houses are encouraged. **Due to space limitations, it is required to register the size of your dollhouse.** Please contact the Hobby Hall office, between Aug. 3–19, Mon. – Fri., 9 am – 12 pm to register the size of your dollhouse. No size limit. **Notify us if you need electricity.** Hobby Hall office: (253)841-5066.

ADDITIONAL AWARDS:

Grand Champion – Rosette plus \$100
Reserve Grand Champion – Rosette plus \$25
Best in Each Category – Ribbon

DOLL HOUSES AND BUILDINGS

Houses must be on a firm base not to extend more than what is equal to 12 feet in scale beyond the foundation of the house or building. *Smaller scale are 1:48 and 1:144.

Class	1st	2nd
3500 FURNISHED DOLL HOUSE, scratch built ...	\$20	\$10
3505 FURNISHED DOLL HOUSE, from a shell or kit	\$20	\$10
3510 UNFURNISHED DOLL HOUSE, scratch built	\$20	\$10
3515 UNFURNISHED DOLL HOUSE, from a shell or kit	\$20	\$10
3516 *SMALL SCALE FURNISHED DOLL HOUSE, scratch built	\$20	\$10
3517 *SMALL SCALE FURNISHED DOLL HOUSE, from a shell or kit	\$20	\$10
3520 OTHER BUILDING, scratch built	\$20	\$10
3525 OTHER BUILDING, from a kit	\$20	\$10
3526 *SMALL SCALE OTHER BUILDING, scratch built	\$20	\$10
3527 *SMALL SCALE OTHER BUILDING, from a kit	\$20	\$10

SETTINGS AND FACADES

Class	1st	2nd
3530 ONE ROOM	\$10	\$5
3535 *SMALL SCALE ONE ROOM	\$10	\$5
3540 SETTING IN UNUSUAL CONTAINER	\$10	\$5
3542 *SMALL SCALE SETTING IN UNUSUAL CONTAINER	\$10	\$5
3545 FACADE	\$10	\$5
3550 CENTERPIECE (dome, holiday, etc.)	\$10	\$5

DIVISION 212 – DOLL HOUSE ACCESSORIES & MINIATURES

All furniture/accessories must be secured with glue, putty, etc. Handmade, must be detached from house or room.

Entries will be judged for:

Workmanship	40%
Originality	20%
Design	20%
Attention to Scale	20%

*Smaller scale are 1:48 and 1:144.

ADDITIONAL AWARDS:

Grand Champion – Rosette plus \$100
Reserve Grand Champion – Rosette plus \$25

Class	1st	2nd
3555 SINGLE PIECE OF FURNITURE, original	\$10	\$5
3558 SINGLE PIECE OF FURNITURE, from a kit	\$10	\$5
3560 *SMALL SCALE SINGLE PIECE OF FURNITURE, original	\$10	\$5
3562 *SMALL SCALE SINGLE PIECE OF FURNITURE, from a kit	\$10	\$5
3572 OTHER ACCESSORIES	\$10	\$5
3573 *SMALL SCALE OTHER ACCESSORIES	\$10	\$5
3575 DOLL HOUSE DOLLS, fully assembled and costumed	\$10	\$5
3600 MINIATURE TOYS	\$10	\$5
3602 MINIATURE FOOD	\$10	\$5
3604 MINIATURE GARDENING	\$10	\$5
3606 MINIATURE TOOLS & TRANSPORTATION ...	\$10	\$5
3608 MINIATURE OTHER	\$10	\$5

continued...

Please read the Washington State Fair Departmental Exhibitors Rules and Regulations, link on page 4, and Hobby Hall Rules on pgs. 5–6. Exhibitors must adhere to the general rules and the specific rules below. For Entry and Release dates see calendar, page 2.

DIVISION 213 – CALLIGRAPHY

Do not enter photo copies or reproductions of your work.

Judges Criteria:

Quality of lettering; lettering styles, consistent angle, rhythmic quality, consistent width top to bottom70%
 Design, color choice, illustration, craftsmanship . .30%

Due to limited case space, calligraphy entries MUST NOT exceed 14" x 16", including frame.

Two dimensional work **must be framed** and have strong WIRE hangers, no string or self-leveling hangers (ex. _^_^_/_^_/_).

ADDITIONAL AWARDS:

Grand Champion –
 Rosette plus \$100
 Reserve Grand Champion –
 Rosette plus \$25

Class		1st	2nd
4000	LETTER FORMS ONLY ON UNALTERED PAPER.....	\$10	\$5
4005	LETTERING WITH EMBELLISHMENT ON PAPER (Backgrounds, illustration, collage, embossing, gilding, weaving, decorative elements, three dimensional objects)...	\$10	\$5
4010	LETTERING ON MATERIAL OTHER THAN PAPER (glass, metal, fabric, wood, stone, etc.).....	\$10	\$5
4015	HAND MADE/HAND LETTERED CARD.....	\$10	\$5
4017	ENVELOPE.....	\$10	\$5
4020	HAND LETTERED BOOK (Handmade folded or stitched)	\$10	\$5

DIVISION 214 – CALLIGRAPHY, TEACHERS AND PROFESSIONALS

Do not enter photo copies or reproductions of your work.

Judges Criteria:

Quality of lettering; lettering styles, consistent angle, rhythmic quality, consistent width top to bottom70%
 Design, color choice, illustration, craftsmanship . .30%

Due to limited case space, calligraphy entries MUST NOT exceed 14" x 16", including frame.

Two dimensional work **must be framed** and have strong WIRE hangers, no string or self-leveling hangers (ex. _^_^_/_^_/_).

ADDITIONAL AWARDS:

Grand Champion –
 Rosette plus \$100
 Reserve Grand Champion –
 Rosette plus \$25

Class		1st	2nd
4030	LETTER FORMS ONLY ON UNALTERED PAPER.....	\$10	\$5
4035	LETTERING WITH EMBELLISHMENT ON PAPER (Backgrounds, illustration, collage, embossing, gilding, weaving, decorative elements, three dimensional objects)...	\$10	\$5
4040	LETTERING ON MATERIAL OTHER THAN PAPER (glass, metal, fabric, wood, stone, etc.).....	\$10	\$5
4045	HAND MADE/HAND LETTERED CARD.....	\$10	\$5
4047	ENVELOPE.....	\$10	\$5
4050	HAND LETTERED BOOK (Handmade folded or stitched)	\$10	\$5

continued...

Please read the Washington State Fair Departmental Exhibitors Rules and Regulations, link on page 4, and Hobby Hall Rules on pgs. 5–6. Exhibitors must adhere to the general rules and the specific rules below. For Entry and Release dates see calendar, page 2.

DIVISION 215 – JEWELRY

One entry per class is allowed. Pairs and sets will be accepted as one entry.

Please do not mount items to be entered.

All categories will be judged primarily by quality and technique, but also in part by the dynamics and originality of the design.

ADDITIONAL AWARDS – ADULTS:

Grand Champion –
Rosette plus \$100

Reserve Grand Champion –
Rosette plus \$25

ADDITIONAL AWARDS – JUNIORS:

Grand Champion –
Rosette plus \$25

Reserve Champion –
Rosette plus \$15

ADULTS

Class	1st	2nd
4060 CONTEMPORARY NECKLACE	\$10	\$5
4061 CONTEMPORARY BRACELET	\$10	\$5
4062 CONTEMPORARY PENDANT, PIN, EARRINGS	\$10	\$5
4063 CONTEMPORARY SETS	\$10	\$5
The above classes are single or multi-strand beaded.		
4064 CONTEMPORARY NON-BEADED	\$10	\$5
4070 ETHNIC OR NATIVE AMERICAN DESIGNED BEADWORK – including jewelry made from loom work, off-loom bead weaving, Peyote stitches, Comanche stitches, medicine bag	\$10	\$5
4071 ETHNIC OR NATIVE AMERICAN DESIGNED NON BEAD stitching or weaving work ..	\$10	\$5
4073 BEADED AMULET BAG	\$10	\$5
4074 LEATHER JEWELRY	\$10	\$5
4075 WIRE/METAL WORK – jewelry of any kind where the main focus is the manipulation of wire or metal (wrapping, hammering, wax or centrifugal casting, soldering or free-form design)	\$10	\$5
4076 CHAINMAILLE	\$10	\$5
4078 BARRETTE	\$10	\$5
4080 BEADS, UP TO 3 made by exhibitor; glass, polymer, fabric, metal, paper, wood, fimo sculpting clay	\$10	\$5
4081 JEWELRY made using seashells	\$10	\$5
4085 OTHER JEWELRY	\$10	\$5

JUNIORS

(15 years and younger)

Class		
4090 ANY JEWELRY (7 and under)	\$10	\$5
4091 JUNIOR BEADED JEWELRY includes all medium (8-11 yrs)	\$10	\$5
4092 JUNIOR BEADED JEWELRY includes all medium (12-15 yrs)	\$10	\$5
4093 JUNIOR NON-BEADED JEWELRY (8-11 yrs)	\$10	\$5
4094 JUNIOR NON-BEADED JEWELRY (12-15 yrs)	\$10	\$5
4095 JUNIOR BEADS, UP TO 3 made by exhibitor; glass, polymer, fabric, metal, wood, fimo, sculpting clay (8-11 yrs)	\$10	\$5
4096 JUNIOR BEADS, UP TO 3 made by exhibitor; glass, polymer, fabric, metal, wood, fimo, sculpting clay (12-15 yrs)	\$10	\$5
4097 JUNIOR OTHER JEWELRY (8-11 yrs)	\$10	\$5
4098 JUNIOR OTHER JEWELRY (12-15 yrs)	\$10	\$5

DIVISION 216 – JEWELRY, TEACHERS AND PROFESSIONALS

Please do not mount items to be entered.

One entry per class is allowed. Pairs and sets will be accepted as one entry.

All categories will be judged primarily by quality and technique, but also in part by the dynamics and originality of the design.

ADDITIONAL AWARDS:

Grand Champion –
Rosette plus \$100

Reserve Grand Champion –
Rosette plus \$25

Class	1st	2nd
4100 CONTEMPORARY NECKLACE	\$10	\$5
4105 CONTEMPORARY BRACELET	\$10	\$5
4110 CONTEMPORARY PENDANT, PIN EARRINGS	\$10	\$5
The above classes are single or multi-strand beaded		
4112 CONTEMPORARY NON-BEADED	\$10	\$5
4115 WIRE/METAL WORK	\$10	\$5
4120 ETHNIC OR NATIVE AMERICAN DESIGNED ..	\$10	\$5
4145 OTHER JEWELRY	\$10	\$5

continued...

Please read the Washington State Fair Departmental Exhibitors Rules and Regulations, link on page 4, and Hobby Hall Rules on pgs. 5–6. Exhibitors must adhere to the general rules and the specific rules below. For Entry and Release dates see calendar, page 2.

DIVISION 217 – CRAFTS

See also Division 221 – Holiday Decorations.

Items must not exceed 30", **width plus length** or 24" total in diameter (including frame, if framed). Items to be hung must have strong WIRE hangers. No string or self-leveling hangers (ex. _/_/_/_). No crochet, knitting, counted cross stitch, stitchery, appliqué or needlepoint (except plastic canvas) will be accepted. Please see Home Arts Department for these areas.

The "OTHER" class will only be used if the item does not fit within any other class in a division.

A professional craftspersons may not enter a craft item from their profession into any amateur division (ie. a professional of hand painted china may not enter a hand painted ornament in the 'Holiday Decorations' division).

One entry per class is allowed.

Some things judges consider:

- **Quality of work**
- **Originality**
- **Use of color**
- **Attention to detail**
- **Neatness**
- **Design**

ADDITIONAL AWARDS:

- Grand Champion –
Rosette plus \$100
- Reserve Grand Champion –
Rosette plus \$25
- Best in each Category –
Ribbon

SILK AND DRIED FLOWERS OR DRIED PLANT MATERIAL

Class		1st	2nd
4190	DECORATED HAT.....	\$10	\$5
4195	WEDDING ARTICLE.....	\$10	\$5
4200	CENTERPIECE.....	\$10	\$5
4205	WREATH.....	\$10	\$5
4210	SWAG OR WALL HANGING.....	\$10	\$5

DRIFTWOOD ARTISTRY

CLASS		1st	2nd
4220	COLLAGE.....	\$10	\$5
4222	DRIFTWOOD.....	\$10	\$5

NON-SEWN CRAFTS

CLASS		1st	2nd
4230	PICTURE ALBUM.....	\$10	\$5
4235	FRAME.....	\$10	\$5
4241	ITEM made using seashells.....	\$10	\$5
4242	ITEM made from recycled materials.....	\$10	\$5

4243	NON FIRED CLAY (polymer, fimo, etc).....	\$10	\$5
4244	DUCT TAPE CRAFT.....	\$10	\$5
4245	OTHER (non-sewn craft).....	\$10	\$5

PLASTIC CANVAS

Class		1st	2nd
4260	SMALL ARTICLE (key chain, bookmark, etc.).....	\$10	\$5
4265	LARGE ARTICLE (purse, mobile, building, etc.).....	\$10	\$5
4280	HOUSEHOLD ITEM (mats, napkin holder) ..	\$10	\$5

DECORATIVE DOLLS AND ANIMALS

(Other than Holiday or soft toys)

Class		1st	2nd
4310	SOFT FELT.....	\$10	\$5
4315	ARTISTIC SOFT DOLL, not a toy.....	\$10	\$5
4316.	ALL OTHER DOLLS.....	\$10	\$5

Please read the Washington State Fair Departmental Exhibitors Rules and Regulations, link on page 4, and Hobby Hall Rules on pgs. 5–6. Exhibitors must adhere to the general rules and the specific rules below. For Entry and Release dates see calendar, page 2.

DIVISION 219 – PAPER CRAFTS

See also Division 221 – Holiday Decorations.

Items must not exceed 30", **width plus length** or 24" total in diameter (including frame, if framed). Items will be judged on workmanship, originality and design. Items to be hung must have strong WIRE hangers. No string or self-leveling hangers (ex. _^_^_/_^_^_).

A professional craftspersons may not enter a craft item from their profession into any amateur division (ie. a professional of hand painted china may not enter a hand painted ornament in the 'Holiday Decorations' division).

No envelopes with cards. No plastic sleeves.

ADDITIONAL AWARDS – ADULTS:

- Grand Champion –
Rosette plus \$100
- Reserve Grand Champion –
Rosette plus \$25

ADDITIONAL AWARDS – JUNIORS:

- Grand Champion –
Rosette plus \$25
- Reserve Grand Champion –
Rosette plus \$15

ADULTS

(16 years and older)

Class	1st	2nd
4400 CARD.....	\$10	\$5
4404 CHRISTMAS CARD	\$10	\$5
4406 OTHER HOLIDAY CARD.....	\$10	\$5
4407 ARTISTIC TRADING CARD COIN (2-1/2" Diameter).....	\$10	\$5
4408 INTERACTIVE CARDS.....	\$10	\$5
4409 ARTISTIC TRADING CARD (2-1/2" x 3-1/2").....	\$10	\$5
4410 QUILLING.....	\$10	\$5
4411 SCRAPBOOKING (1 page maximum)	\$10	\$5
4412 PAPER FOLDING (Origami, Tea Bag, Iris, etc) ..\$10	\$5	
4414 PUNCH ART.....	\$10	\$5
4416 COLORING TECHNIQUES	\$10	\$5
4418 THREE DIMENSIONAL (Home Decor).....	\$10	\$5
4420 THREE DIMENSIONAL (Box, Bag, etc).....	\$10	\$5
4422 BOOK (Altered, handmade, etc)	\$10	\$5
4424 ITEM MADE FROM RECYCLED PAPER.....	\$10	\$5
4426 OTHER PAPER ARTICLE	\$10	\$5
4427 ZENTANGLE (Doodling)	\$10	\$5

JUNIORS

(Under 16 years old)

Class	1st	2nd
4428 JUNIOR CARD.....	\$10	\$5
4430 JUNIOR PAPIER-MÂCHÉ.....	\$10	\$5
4431 JUNIOR SCRAPBOOKING (1 page maximum).....	\$10	\$5
4432 JUNIOR QUILLING.....	\$10	\$5
4434 JUNIOR ORIGAMI	\$10	\$5
4436 JUNIOR ITEM MADE FROM RECYCLED PAPER	\$10	\$5
4438 JUNIOR OTHER PAPER ARTICLE	\$10	\$5

DIVISION 220 – PAPER CRAFTS, TEACHERS AND PROFESSIONALS

Items must not exceed 30" **width plus length** or 24" total in diameter (including frame, if framed). Items will be judged on workmanship, originality and design. Items to be hung must have strong WIRE hangers. No string or self-leveling hangers (ex. _^_^_/_^_^_).

One entry per class is allowed.

No envelopes with cards. No plastic sleeves.

ADDITIONAL AWARDS:

- Grand Champion -
Rosette plus \$100
- Reserve Grand Champion -
Rosette plus \$25

Class	1st	2nd
4440 CARD.....	\$10	\$5
4448 QUILLING.....	\$10	\$5
4450 PAPER FOLDING (Origami, Tea Bag, Iris, etc).....	\$10	\$5
4452 PUNCH ART.....	\$10	\$5
4454 COLORING TECHNIQUES	\$10	\$5
4456 THREE DIMENSIONAL (Home Decor).....	\$10	\$5
4458 THREE DIMENSIONAL (Box, Bag, etc.)	\$10	\$5
4460 BOOK (Altered, handmade, etc)	\$10	\$5
4462 ITEM MADE FROM RECYCLED PAPER.....	\$10	\$5

continued...

Please read the Washington State Fair Departmental Exhibitors Rules and Regulations, link on page 4, and Hobby Hall Rules on pgs. 5–6. Exhibitors must adhere to the general rules and the specific rules below. For Entry and Release dates see calendar, page 2.

DIVISION 221 – HOLIDAY DECORATIONS

Items must not exceed 30", **width plus length**, or 24" total in diameter (including frame, if framed). Items will be judged on workmanship, originality, design, finishing and cleanliness.

All articles to be hung must have strong WIRE hangers, no string or self-leveling hangers (ex. _^_^_^_).

No crochet, knitting, counted cross-stitch, stitchery, appliqué or needlepoint, except plastic canvas will be accepted. Please see Home Arts Department for appropriate divisions.

A professional craftspersons may not enter a craft item from their profession into any amateur division (ie. a professional of hand painted china may not enter a hand painted ornament in the 'Holiday Decorations' division).

One entry per class is allowed.

Items containing fresh flowers or greens will not be accepted.

ADDITIONAL AWARDS:

Grand Champion –
Rosette plus \$100

Reserve Grand Champion –
Rosette plus \$25

Best in each Category –
Ribbon

CHRISTMAS

Class	1st	2nd
4500 ORNAMENT (One).....	\$10	\$5
4505 TREE SKIRT (up to 36" total in diameter)...	\$10	\$5
4510 STOCKING.....	\$10	\$5
4515 TREE TOPPER.....	\$10	\$5
4520 WREATH (up to 24" total in diameter).....	\$10	\$5
4530 CENTERPIECE OR TABLE DECORATION.....	\$10	\$5
4532 GIFT WRAPPED PACKAGE (up to 30", width plus length plus height).....	\$10	\$5
4535 WALL HANGING OR DOOR DECORATION ..	\$10	\$5
4537 ITEM MADE FROM RECYCLED MATERIALS..	\$10	\$5
4540 DECORATIVE DOLL.....	\$10	\$5

ANY OTHER HOLIDAY OR SEASON

Class	1st	2nd
4550 WREATH (Up to 24" total in diameter).....	\$10	\$5
4555 CENTERPIECE OR TABLE DECORATION.....	\$10	\$5
4560 WALL HANGING OR DOOR DECORATION ..	\$10	\$5
4562 ITEM MADE FROM RECYCLED MATERIALS..	\$10	\$5
4565 DECORATIVE DOLL.....	\$10	\$5

DIVISION 222 – EGG ART

(Entries must be real eggs.)

A STABLE, proper stand must be provided by exhibitor.

ADDITIONAL AWARDS:

Grand Champion –
Rosette plus \$100

Reserve Grand Champion –
Rosette plus \$25

Class	1st	2nd
4800 DIORAMA	\$10	\$5
4810 HINGED	\$10	\$5
4812 MECHANICAL.....	\$10	\$5
4815 DECOUPAGE.....	\$10	\$5
4820 HAND PAINTED.....	\$10	\$5
4825 BEADED.....	\$10	\$5
4827 JEWELLED	\$10	\$5
4830 FANCY CUT.....	\$10	\$5
4840 NATURAL DYE	\$10	\$5
4845 WAX RESIST	\$10	\$5
4850 SCRATCHED	\$10	\$5
4851 CARVED	\$10	\$5
4853 HOLIDAY	\$10	\$5
4860 MINIATURE (Smaller than chicken egg) ...	\$10	\$5
4865 OTHER EGG.....	\$10	\$5

continued...

Please read the Washington State Fair Departmental Exhibitors Rules and Regulations, link on page 4, and Hobby Hall Rules on pgs. 5-6. Exhibitors must adhere to the general rules and the specific rules below. For Entry and Release dates see calendar, page 2.

DIVISION 223 – STAINED GLASS

If your entry can be hung, please use sturdy hooks. Do not include chains or wire. No self-leveling hangers (ex. _^_^_^_).

If need for display purposes, a correctly proportioned easel/plate stand must be provided by the exhibitor.

Window hangings should not exceed 72", length plus width.

Some things judges consider:

Design:

How everything flows together

Glass:

Selection of color and texture

Fabrication:

How well the piece is constructed

Finish:

How well it is cleaned

ADDITIONAL AWARDS:

Grand Champion –
Rosette plus \$100

Reserve Grand Champion –
Rosette plus \$25

Class		1st	2nd
5000	WINDOW HANGING, Copper foil - from pattern.....	\$15	\$10
5010	WINDOW HANGING, Copper foil - from original design	\$15	\$10
5020	WINDOW HANGING, Leaded - from pattern.....	\$15	\$10
5030	WINDOW HANGING, Leaded - from original design	\$15	\$10
5038	LAMP (max 24" diameter)	\$15	\$10

DIVISION 224 – DECORATIVE GLASS

If your entry can be hung, please use sturdy hooks. Do not include chains or wire. No self-leveling hangers (ex. _^_^_^_).

If need for display purposes, a correctly proportioned easel/plate stand must be provided by the exhibitor.

Decorative glass work should not exceed 72", length plus width.

Some things judges consider:

Design:

How everything flows together

Glass:

Selection of color and texture

Fabrication:

How well the piece is constructed

Finish:

How well it is cleaned

ADDITIONAL AWARDS:

Grand Champion –
Rosette plus \$100

Reserve Grand Champion –
Rosette plus \$25

Class		1st	2nd
5045	THREE DIMENSIONAL WORK (Boxes, centerpieces, etc.)	\$15	\$10
5065	ETCHED WORK.....	\$15	\$10
5070	BLOWN GLASS.....	\$15	\$10
5072	MOSAIC (Three dimensional and/or flat work)	\$15	\$10
5073	FUSED AND/OR SLUMPED GLASS.....	\$15	\$10
5075	OTHER.....	\$15	\$10

continued...

DIVISION 225 – MODELS

Models will be judged on accuracy of construction and finishing techniques. Bases and kit-provided figures are allowed.

The following definitions will apply to models:

- “Kit built” – from a kit, may be detailed using additional materials.
- “Kit conversion” – Kits with major structural changes; may use two kits, scratch materials or any combination.
- “Scratch built” – made from materials, not in kit.

Models will be displayed in glass cases, on shelves out of reach, or open display areas out of reach. Please secure loose parts with glue or putty. Models may be handled by the judges. Covers on models need to be removable for judging only.

Diorama entries are limited to one entry per person. Size not to exceed 15” in height, **not to exceed 36” in length plus width**. All pieces must be securely attached to a base. No dioramas accepted in enclosed cases.

Due to space limitations, it is required to register the size of your model. Please contact the Hobby Hall office, between Aug. 3 - 19, Mon. – Fri., 9 am -12 pm to register the size of your model. No size limit, **except dioramas**. Hobby Hall office: (253)841-5066.

ADDITIONAL AWARDS – ADULTS:

- Grand Champion – Adult
Rosette plus \$100
- Reserve Grand Champion – Adult
Rosette plus \$25
- Best in Each Category – Ribbon

ADDITIONAL AWARDS – JUNIORS:

- Grand Champion – Junior
Rosette plus \$25
- Reserve Grand Champion – Junior
Rosette plus \$15
- Best in Each Category – Ribbon

JUNIORS MODELS

(Under 15 years old)

Class		1st	2nd
5100	VEHICLE	\$10	\$5
5120	AIRCRAFT.....	\$10	\$5
5135	DIORAMA (not to exceed 36", length plus width)	\$10	\$5
5140	OTHER MODEL.....	\$10	\$5

BUILT MODELS ADULTS

(16 years and older)

Class		1st	2nd
5250	CAR AND MOTORCYCLE.....	\$10	\$5
5255	TRUCK.....	\$10	\$5
5260	MILITARY VEHICLE	\$10	\$5
5265	AIRCRAFT.....	\$10	\$5
5270	BOAT AND SHIP.....	\$10	\$5
5285	OTHER MODELS	\$10	\$5

KIT CONVERSIONS AND SCRATCH BUILT ADULTS

(16 years and older)

Class		1st	2nd
5400	VEHICLE	\$10	\$5
5415	AIRCRAFT.....	\$10	\$5
5420	BOAT AND SHIP.....	\$10	\$5
5430	DIORAMA (not to exceed 36", length plus width)	\$10	\$5
5435	OTHER MODELS	\$10	\$5

OPERATING MODELS ADULTS

(16 years and older)

Class		1st	2nd
5500	ROBOTICS	\$10	\$5
5510	TRANSPORTATION (Vehicles, Aircraft, Boats, Ships)	\$10	\$5
5525	OTHER OPERATING MODELS	\$10	\$5

continued...

DIVISION 227 – LEGO BUILDING

SPECIAL RULES:

1. Build an original model using ONLY LEGO BRAND components. All pieces must have the word LEGO on them.
2. One entry per person in this division.
3. **No kits or items directly from idea books.**
4. No computer - generated projects.
5. Models must be secure enough to be moved.
6. Entire piece may not exceed 10" x 10" x 15" high.
7. ENTRIES WILL BE JUDGED FOR ORIGINALITY AND DETAIL OF DESIGN. All articles must be solely the work of an individual exhibitor.
8. Entries must be left for display during The Fair. All award-winning entries will be displayed, and every effort will be made to display all other entries.
9. Ribbons and premiums will be awarded in each age class.
10. Entries must be picked up:
Tuesday, Sept. 29, 9 am – 8 pm or
Wednesday, Sept. 30, 9 am – 6 pm

ADDITIONAL AWARDS – AGE 15 AND YOUNGER:

- Grand Champion –
Rosette plus \$50
- Reserve Grand Champion –
Rosette plus \$25

ADDITIONAL AWARDS – AGE 16 AND OLDER:

- Grand Champion –
Rosette plus \$50
- Reserve Grand Champion –
Rosette plus \$25

AGE 15 AND YOUNGER

Class		1st	2nd
5900	3 - 5 YEARS	\$10	\$5
5920	6 – 8 YEARS, STRUCTURE OR BUILDING.....	\$10	\$5
5930	6 – 8 YEARS, MISCELLANEOUS.....	\$10	\$5
5940	9 – 11 YEARS, STRUCTURE OR BUILDING.....	\$10	\$5
5950	9 – 11 YEARS, MISCELLANEOUS.....	\$10	\$5
5960	12 – 15 YEARS, STRUCTURE OR BUILDING.....	\$10	\$5
5970	12 – 15 YEARS, MISCELLANEOUS.....	\$10	\$5

AGE 16 AND OLDER

Class		1st	2nd
5975	ADULT, STRUCTURE OR BUILDING	\$10	\$5
5980	ADULT, MISCELLANEOUS.....	\$10	\$5

Please read the Washington State Fair Departmental Exhibitors Rules and Regulations, link on page 4, and Hobby Hall Rules on pgs. 5-6. Exhibitors must adhere to the general rules and the specific rules below. For Entry and Release dates see calendar, page 2.

DIVISION 228 – CERAMICS AND POTTERY

NOTE: According to the Washington State Ceramics Association, winning ribbons or premiums at this Fair does not change your amateur status for future ceramics show competition.

All items must be at least 70% fired ceramic.

Secure all loose pieces, lids, bases, etc., with tape or glue.

ADDITIONAL AWARDS – ADULT:

Grand Champion – Adult
Rosette plus \$100

Reserve Grand Champion – Adult
Rosette plus \$25

Best in Each Category – Ribbon

ADDITIONAL AWARDS – JUNIORS:

Grand Champion – Juniors
Rosette plus \$25

Reserve Grand Champion – Juniors
Rosette plus \$15

JUNIORS- AGES 6 TO 15 YEARS

Juniors, age 6 to 15 years are to compete in the Junior Division only. A class with ten or more entries will be split into two groups for judging: 6 - 10 years old and 11 - 15 years old.

Class	1st	2nd
6023 JUNIOR MISCELLANEOUS	\$5	\$3
6024 JUNIOR POTTERY	\$5	\$3
6026 JUNIOR HAND MODELED	\$5	\$3
6028 JUNIOR RAKU.....	\$5	\$3
6030 JUNIOR POLYMER CLAY	\$5	\$3

ADULTS

(16 years and older)

CERAMICS – GLAZES

Glaze application and appearance

Class	1st	2nd
6070 GLOSS GLAZE.....	\$10	\$5
6075 MATT GLAZE	\$10	\$5
6080 TEXTURE GLAZE	\$10	\$5
6083 CRYSTAL GLAZE	\$10	\$5
6087 COMBINATION GLAZE.....	\$10	\$5
6090 RAKU.....	\$10	\$5
6092 HAND MODELED.....	\$10	\$5
6094 HIGH FIRED.....	\$10	\$5
6096 CREATIVE DESIGNS.....	\$10	\$5

CERAMICS – UNDERGLAZE

Class	1st	2nd
6140 OPAQUE (Embossed).....	\$10	\$5
6145 OPAQUE (Smooth)	\$10	\$5
6150 TRANSLUCENT (Brush strokes).....	\$10	\$5
6155 TRANSLUCENT (Embossed).....	\$10	\$5
6160 COMBINATIONS.....	\$10	\$5

CERAMICS – MISCELLANEOUS TECHNIQUES

Class	1st	2nd
6170 OVERGLAZE	\$10	\$5
6172 STAIN (un-fired finish).....	\$10	\$5
6175 AIR BRUSH.....	\$10	\$5
6180 CREATIVE DESIGN.....	\$10	\$5
6185 SPECIAL EFFECTS	\$10	\$5
6190 CHALKING.....	\$10	\$5
6195 DECALS	\$10	\$5
6196 TWO OR MORE GLAZES	\$10	\$5
6197 METALLIC ANTIQUES.....	\$10	\$5
6200 OTHER.....	\$10	\$5

POTTERY

Class	1st	2nd
6230 WHEEL THROWN, LARGE ARTICLE, OVER 12 INCHES	\$10	\$5
6235 WHEEL THROWN, SMALL ARTICLE, 12 INCHES OR UNDER	\$10	\$5
6240 HAND FORMED, LARGE ARTICLE, OVER 12 INCHES	\$10	\$5
6245 HAND FORMED, SMALL ARTICLE, 12 INCHES OR UNDER	\$10	\$5
6253 RAKU.....	\$10	\$5
6255 MISCELLANEOUS	\$10	\$5

continued...

Please read the Washington State Fair Departmental Exhibitors Rules and Regulations, link on page 4, and Hobby Hall Rules on pgs. 5–6. Exhibitors must adhere to the general rules and the specific rules below. For Entry and Release dates see calendar, page 2.

DIVISION 229 – HAND PAINTED CHINA

Entries will be judged for design, originality, technical skill, neatness and balance, and suitability to the piece.

Pieces made in a class cannot be entered.

Secure all loose pieces, lids, bases, etc. with tape or glue.

ADDITIONAL AWARDS:

Grand Champion –
Rosette plus \$100

Reserve Grand Champion –
Rosette plus \$25

Class		1st	2nd
6500	ANIMALS	\$10	\$5
6505	BIRDS	\$10	\$5
6510	FLOWERS	\$10	\$5
6515	FRUITS, VEGETABLES	\$10	\$5
6520	PORTRAITS	\$10	\$5
6525	SCENES	\$10	\$5
6545	OTHER SUBJECTS	\$10	\$5
6550	TECHNIQUES	\$10	\$5

DIVISION 230 – HAND PAINTED CHINA, TEACHERS AND PROFESSIONALS

ADDITIONAL AWARDS:

Grand Champion –
Rosette plus \$100

Reserve Grand Champion –
Rosette plus \$25

Class		1st	2nd
6600	ANIMALS	\$10	\$5
6605	BIRDS	\$10	\$5
6610	FLOWERS	\$10	\$5
6615	FRUITS, VEGETABLES	\$10	\$5
6620	PORTRAITS	\$10	\$5
6625	SCENES	\$10	\$5
6645	OTHER SUBJECTS	\$10	\$5
6650	TECHNIQUES	\$10	\$5

continued...

Please read the Washington State Fair Departmental Exhibitors Rules and Regulations, link on page 4, and Hobby Hall Rules on pgs. 5–6. Exhibitors must adhere to the general rules and the specific rules below. For Entry and Release dates see calendar, page 2.

DIVISION 231 – LAPIDARY ARTS

All categories will be judged primarily on workmanship and quality of material, but also in originality and artistic design.

Entries must be the handwork of the exhibitor. Manufactured mounts and findings will be accepted but not judged.

*Display classes 6770, 6780 and 6820:

Display size is limited to 12" width x 12" length x 8" height unless preapproved by the Hobby Hall supervisor.

Exhibitors may choose the number of items to be displayed, but must observe size requirements above.

Entries may or may not be finished/polished but must be appropriately cleaned.

Purchased specimens may be included but must not dominate the display.

Labeling and containers are not required but encouraged.

ADDITIONAL AWARDS:

Grand Champion –
Rosette plus \$100

Reserve Grand Champion –
Rosette plus \$25

Class		1st	2nd
6700	METAL FABRICATION focus on lapidary arts	\$10	\$5
6720	CABOCHONS	\$10	\$5
6730	FREE FORM CABOCHONS	\$10	\$5
6740	CARVING	\$10	\$5
6745	INTARSIA	\$10	\$5
6750	GEM TREE	\$10	\$5
6755	TUMBLED STONES	\$10	\$5
6760	FACETED STONES	\$10	\$5
6770	*FOSSIL DISPLAY	\$10	\$5
6780	*GEM/MINERAL DISPLAY	\$10	\$5
6820	*CRYSTALS DISPLAY	\$10	\$5
6830	OTHER LAPIDARY ART	\$10	\$5

DIVISION 232 – BEADWORK

All items will be judged on construction, degree of difficulty and quality of finish.

ADDITIONAL AWARDS:

Grand Champion –
Rosette plus \$100

Reserve Grand Champion –
Rosette plus \$25

BEADWORK

Other than jewelry

Class		1st	2nd
4350	APPAREL / ACCESSORY	\$10	\$5
4355	HOME DÉCOR (Lamp shade, pillow fringe or tassels, pictures)	\$10	\$5
4365	NATIVE AMERICAN BEADWORK	\$10	\$5
4368	BEADWORK ON OTHER SURFACE	\$10	\$5
4370	OTHER BEADWORK	\$10	\$5

continued...

Please read the Washington State Fair Departmental Exhibitors Rules and Regulations, link on page 4, and Hobby Hall Rules on pgs. 5–6. Exhibitors must adhere to the general rules and the specific rules below. For Entry and Release dates see calendar, page 2.

DIVISION 233 – TRIM-A-TREE CONTEST

Online entry registration for Trim-A-Tree Contest must be submitted by July, 26. One entry is allowed per individual in this division. All entries will be put in a drawing, and six will be selected by Aug 3. All applicants will receive confirmation of their status via mail by Aug 5.

ARTIFICIAL TREES

Artificial trees will be provided. Measurement from floor to lowest branches is 11.5". Measurement from lowest branches to tip of the tree is 5'. Diameter at bottom branch is 36".

Miniature UL approved lights may be used on the trees. Exhibitors must provide UL approved 14 gauge or heavier three wire (grounded) extension cord, 15" minimum length. Approved multi-plug adapters may be used. Please, no on or off switches on your tree.

Tree skirt and decorations around the base of the tree may not extend more than six inches beyond the tips of the lower branches (**a total of 48" in diameter floor space**).

Name your own theme! Tree decorations must follow the theme you have selected. **You must STATE YOUR THEME in your online entry, in the DESCRIPTION field.**

Those selected must be available to decorate trees:

Friday, Aug. 21, 9am – 4pm
Saturday, Aug. 22, 9am – 4pm or
Sunday, Aug. 23, 12 – 5pm

Pick-up will be:

Tuesday, Sept. 29, 9am – 8pm, or
Wednesday, Sept. 30, 9am – 5pm

PRIZE SCHEDULE

1st	2nd
\$50	\$20

Class

7000 Trim-a-Tree Contest

Please read the Washington State Fair Departmental Exhibitors Rules and Regulations, link on page 4, and Hobby Hall Rules on pgs. 5–6. Exhibitors must adhere to the general rules and the specific rules below. For Entry and Release dates see calendar, page 2.

DIVISION 243 – HOBBY HALL COLLECTIONS INFORMATION

COLLECTIONS COORDINATOR

Linda Hartley

wsf.collections@gmail.com

COMPETITIVE EXHIBITS OFFICE:

(253) 841-5074 (year round)

or email: CompExhibits@thefair.com

HOBBY HALL COLLECTIONS OFFICE:

(253) 841-5066

Beginning July 27, 9 am – 12 pm,
and building hours during Fairtime

MAIL APPLICATIONS AND PICTURES TO:

Competitive Exhibits Entry Office

ATTN: Hobby Hall

Washington State Fair

110 9th Avenue SW

Puyallup, WA 98371-6811

Or email them to: wsf.collections@gmail.com

Any collection or display that is of general interest, family friendly and worthy of recommendation to others and NOT MAINTAINED FOR FINANCIAL GAIN may be entered.

Participation ribbons will be given to all exhibitors. Daily people's choice ribbons awarded in adult and junior collections.

The Washington State Fair assumes no responsibility for loss or damage. Every reasonable precaution will be used to protect items on display.

APPLICATION DATE

To apply, submit an entry online (available in May), complete the form on page 24, and return it along with clear photograph(s) of your collection by **July 26**. Photos will be returned.

Space is assigned beginning July 27. You will be notified on or before Aug. 3 if your collection has been accepted for display or not.

No entry fee will be charged.

ENTRANCE TO THE FAIR

Walk-in entrance is through the Gold Gate. If you have heavy or oversized items you may drive through the Gold Gate. Use the elevator on the south end of the building for heavy or oversized items. The Hobby Hall is located in the Pavilion on the second floor.

COLLECTION DISPLAY SET UP DATES AND TIMES

Accepted collections must be set up:

Friday, Aug. 21, 9 am – 4 pm

Saturday, Aug. 22, 9 am – 4 pm

Sunday, Aug. 23, 12 pm – 6 pm

RELEASE DATES AND TIMES

All collections must be picked-up:

Tuesday, Sept. 29, 9 am – 8 pm

Wednesday, Sept. 30, 9 am – 5 pm

HOBBY HALL COLLECTIONS RULES

The general rules (Rules and Regulations on page 4) governing all departments of the Fair are to be observed with a few additions.

1. Previously displayed collections may be resubmitted after two years.
2. Collections must be registered online (link and information on page 4) and application and pictures be submitted via mail, email or drop off at The Fair administration office. Email and office addresses are located in the previous column under, "**Mail Applications And Pictures To:**"
3. Print online application and return completed form with photos to Fair Administration office by July 26. Photos will be returned. Collections registered without paper or emailed application forms will not be considered.
4. No selling or soliciting of any kind is allowed by exhibitors.
5. No suggestive materials will be accepted.
6. The Fair reserves the right to not accept any material or remove any material from display at any time, for any reason and at their own discretion. Items not displayed will be held in a secure storage area and the entrant will be called prior to The Fair opening. Entries cannot be accepted or returned by mail or common carrier.
7. No live materials (e.g. plants) are allowed.
8. For security reasons, we suggest no personal photos.
9. Metal containers in a collection display must not contain liquid (e.g. soda cans).
10. No hazardous materials of any kind.
11. Must be 5 years or older by Aug. 30, 2020 to enter.
12. Only one collection per household.
13. The Fair reserves the right to cancel a collection for not following Fair Rules, or if a collection cannot be set-up during the posted set-up dates or times.

Class

1000. Collections

2020 WASHINGTON STATE FAIR HOBBY HALL COLLECTIONS APPLICATION

Please submit this form before July 26, 2020

(If accepted, you'll need to be able to set up your display Aug. 21, 22 and/or 23. Exact times will be noted on acceptance letter.)

This form is required for COLLECTIONS only – not for your handmade entries. See Hobby Hall Entries information for those items. **In addition to this form**, you MUST register online (see "Online Entry Registration Instructions" on the previous page). Please return this form, via mail, email or drop it by The Fair office, along with pictures, before July 26, as the decisions will be made the following week.

PLEASE PRINT CLEARLY

_____	_____	<input type="checkbox"/> JUNIOR, Age 5–15	<input type="checkbox"/> ADULT, Age 16 or older
FIRST NAME	LAST NAME		
_____	_____	_____	_____
ADDRESS	CITY/STATE	ZIP	
_____	_____	_____	
PHONE	Alternate PHONE		
_____	_____		
E-MAIL	_____		

DESCRIPTION OF THE COLLECTION YOU'D LIKE TO EXHIBIT:

What is it?

How many pieces do you have?

What is unique about your collection?

Size of case you prefer? (this is not a guarantee, just a preference)

OTHER DETAILS:

Have you ever applied, with this collection or another collection?

No Yes If Yes, year(s) applied _____

If Yes, was it accepted?

No Yes If Yes, name of accepted collection(s) _____ YEAR displayed _____
(a collection may be re-submitted if it has been at least 3 years since it was displayed)

IMPORTANT – Clear photos that represent your collection must be sent along with this application. The photos will be returned to you. Pictures may be printed on paper. Only one collection per household (per year) will be accepted for display.

Please be aware, the Washington State Fair assumes no responsibility for loss or damage. Every reasonable precaution will be used to protect items on display (we supply locks for the cases and employ security guards when Fair staff is off work).

Your agreement to the terms:

I hereby attest that I do not maintain my hobby for profit, and that I agree to follow the rules set forth by the Washington State Fair.

Parent or legal guardian must sign for all persons under 16 years (16 years old as of Aug. 30, 2020 will be classified as an adult).

PRINTED NAME _____ Date _____

Adult Signature _____ For Self For Junior, collector's age **REQUIRED** _____

I have registered online

Mail to: Competitive Exhibits Office (Hobby Hall)
WASHINGTON STATE FAIR
110 9th Avenue SW
Puyallup WA 98371-6811

Email to: wsf.collections@gmail.com