

HOME ARTS TEXTILES PREMIUM LIST

DIRECTOR IN CHARGE

Candace Blancher

SUPERINTENDENT

Nancy Dekeyser

CONTEST COORDINATOR

Jan Larson

ENTRIES COORDINATOR

Holly St. Clair

TEXTILE DEMONSTRATION COORDINATOR

Liz Baker

HOME ARTS OFFICE

(253) 841-5063

Beginning Aug. 4, 9am – 12pm,
and Fairtime during building hours

COMPETITIVE EXHIBITS OFFICE

Washington State Fair

Hours: Mon.–Fri., 8am – 4:30pm

Phone: (253) 841-5074

Email: CompExhibits@thefair.com

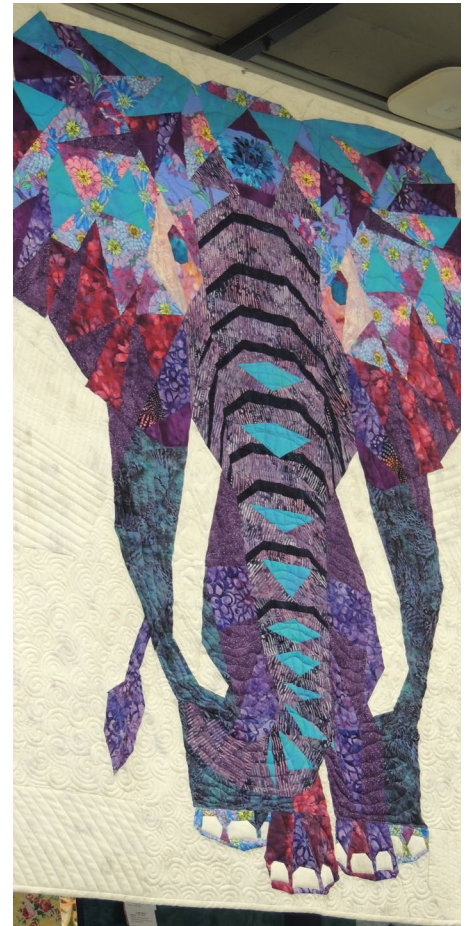
WASHINGTON STATE FAIR

SEPTEMBER 2 – 25, 2022

(CLOSED TUESDAYS & SEPT. 7)

110 9th Avenue SW, Puyallup WA 98371-6811

24-Hour Hotline: 253-841-5045 | THEFAIR.COM



2022 HOME ARTS CALENDAR

SUN	MON	TUE	WED	THU	FRI	SAT
AUG. 14	AUG. 15	AUG. 16	AUG. 17	AUG. 18	AUG. 19	AUG. 20
Online Entry Registration Due by 10pm for Table Setting & Quilt Challenge			Online Entry Registration Due by 10pm for Textiles & Preserved Foods		BRING ENTRIES for Textiles & Preserved Foods 9am-4pm	BRING ENTRIES for Textiles & Preserved Foods 9am-4pm
AUG. 21	AUG. 22	AUG. 23	AUG. 24	AUG. 25	AUG. 26	AUG. 27
BRING ENTRIES for Textiles & Preserved Foods 12pm-6pm				Online Entry Registration Due by 10pm for Culinary, Quick Bread and Amateur Decorated Cake, Cupcake & Cake Pop Contest		
AUG. 28	AUG. 29	AUG. 30	AUG. 31	SEPT. 1	SEPT. 2	SEPT. 3
		BRING ENTRIES for Culinary, Quick Bread, Amateur Decorated Cake, Cupcake & Cake Pop Contest & Table Setting 11am-6pm		Online Entry Registration Due by 10pm for Edible Art Contest	OPENING DAY OF FAIR	Online Entry Registration Due by 10pm for Sourdough Bread Contest BRING ENTRIES Edible Art 10:30am-12:30pm
SEPT. 4	SEPT. 5	SEPT. 6	SEPT. 7	SEPT. 8	SEPT. 9	SEPT. 10
	BRING ENTRIES Sourdough Contest 10:30am-12:30pm	FAIR CLOSED Online Entry Registration Due by 10pm for Salsa Showdown	FAIR CLOSED	Online Entry Registration Due by 10pm for Adult-Child Cupcake Contest BRING ENTRIES Salsa Showdown 4:30-6:30pm	Online Entry Registration Due by 10pm for Soup's On!	Online Entry Registration Due by 10pm for Brown & Haley Adult Contest BRING ENTRIES for Adult-Child Cupcake Contest 10:30am-12:30pm
SEPT. 11	SEPT. 12	SEPT. 13	SEPT. 14	SEPT. 15	SEPT. 16	SEPT. 17
Online Entry Registration Due by 10pm for Fastest Fingers in the West BRING ENTRIES Soup's On! 4:30-6:30pm	Online Entry Registration Due by 10pm for Apple Dessert Contest • Fastest Fingers in the West Contests BRING ENTRIES Brown & Haley Adult Contest 4:30-6:30pm	FAIR CLOSED Online Entry Registration Due by 10pm for Fried Breads Contest	BRING ENTRIES Apple Dessert 4:30-6:30pm	Online Entry Registration Due by 10pm for Brown & Haley Adult-Child Contest BRING ENTRIES Fried Breads Contest 4:30-6:30pm		Online Entry Registration Due by 10pm for Berry Pie Contest BRING ENTRIES Brown & Haley Adult-Child Contest 10:30am-12:30pm
SEPT. 18	SEPT. 19	SEPT. 20	SEPT. 21	SEPT. 22	SEPT. 23	SEPT. 24
	Online Entry Registration Due by 10pm for Scone Contest BRING ENTRIES Berry Pie Contest 10:30am-12:30pm	FAIR CLOSED	Online Entry Registration Due by 10pm for Jam & Jelly Contest BRING ENTRIES Scone Contest 10:30am-12:30pm	Online Entry Registration Due by 10pm for Refined SF Baked Goods Contest	BRING ENTRIES Jam & Jelly Contest 10:30am-12:30pm	BRING ENTRIES Refined SF Baked Goods Contest 10:30am-12:30pm
SEPT. 25	SEPT. 26	SEPT. 27	SEPT. 28	SEPT. 29	SEPT. 30	OCT. 1
LAST DAY OF FAIR		<i>Release of all entries and exhibitors may pick up ribbons, 9am-8pm</i>	<i>Release of all entries and exhibitors may pick up ribbons, 9am-6pm</i>			

CONTENTS

2022 CALENDAR	2
Links to important Fair Information	4
Online Entry Registration Instructions	4
Entry & Release Schedules	5
Home Arts Information and General Rules	6
Division 100 – Sewing	8
Division 101 – Creative Stitchery	9
Division 117 – Professional / Master Creative Stitchery	9
Division 118 – Machine Embroidery	10
Division 102 – Needlepoint	10
Division 103 – Crochet	11
Division 104 – Knitting	11
Division 105 – Fastest Fingers in the West Contest	12
Division 110 – Quilt Challenge	12
Division 106 – Large Quilts	13
Division 107 – Amateur / Professional Quilt Collaboration	14
Division 108 – Professional / Master Quilters	14
Division 109 – Small Quilts	15
Division 112 – Lace / Open Work	17
Division 111 – Rugs	17
Division 113 – Weaving	18
Division 114 – Spinning	19
Division 115 – Basketry	20
Division 116 – Professional / Master Basket Maker	20

PLEASE NOTE:

Please see separate
HOME ARTS - FOODS PREMIUM LIST
for **Preserved Foods**, **Culinary Arts**
and **Table Setting** entry information.

Click here:

[**COMPETITIVE EXHIBIT ENTRIES**](#)

Washington STATE FAIR

DO THE PUYALLUP!

SEPTEMBER 2 – 25, 2022
(CLOSED TUESDAYS & SEPT. 7)

By submitting an entry into The Fair, exhibitors agree to abide by all rules, regulations and entry requirements of The Fair and of the department(s) to which they are submitting their entries. It is important that exhibitors read and be familiar with the rules in this book, as well as the Departmental Exhibitors Rules and Regulations.

Please click here: [Enter a Competition](#) and scroll down to 'ADDITIONAL INFORMATION' to find:

- Departmental Exhibitors Rules and Regulations
- Vehicle Unloading Procedures
- Insurance Information

You may not find it necessary to print this entire Premium List. While we ask that you **read and be familiar with the information in the Premium List prior to entry, please feel free to print just the pages you need.**

Online Entry Registration Instructions

Read below, then register entry information online before bringing items to The Fair.

www.thefair.com

- Read the complete rules, department and division descriptions, and entry information in this Premium List **BEFORE** going to Online Entry Registration.
- Then go to the [ONLINE ENTRY REGISTRATION](#) page (*available starting in May*)
- Click [Register](#) or [Sign In](#)
 - Register using your First Name and Last Name and create a password (*write your password down or make sure it is something you will remember for future use.*) Fill in requested information, including email address. Click [Continue](#).
 - Select [Department](#) ex.: *Home Arts - Textiles*
 - Select a [Division](#) ex.: *Sewing, Division 100*
 - Select a [Class](#) ex.: *class 1032 - Costume*
 - Fill in all requested information for the class(es) you are entering, including a brief [Description](#) (*such as color, pattern, special material*)
- When all your information is complete, click [Add Entry to Cart](#) and follow instructions to check out. *There are NO ENTRY FEES in any of the Home Arts Divisions.*
(NOTE: If you think you may want to modify your entries, you may *save* your current session and *check out at a later session.* Be sure to [Check Out before the closing date listed for your classes; entries are not submitted to The Fair office until the check out process is complete](#)).
- Fill in "yes" at the statement to agree to all the terms and conditions of entry as defined in this Premium List.
- Click [Submit](#).
- Please print and bring a copy of your online entry summary/receipt **with your entries** when you bring them to The Fair.
- Please contact us with any questions regarding online entry registration:
253-841-5074, CompExhibits@thefair.com

ENTRY & RELEASE SCHEDULES

Also, See Calendar on Page 2

ENTRY & RELEASE REGULAR SCHEDULE

Classes in the following divisions fall under the regular schedule of dates and times listed below for **Online Entry Registration, Bringing In Entry Items** and **Entry Release/Return**.

Div. 100 - Sewing.....	pg. 8
Div. 101 - Creative Stitchery.....	pg. 9
Div. 117 - Professional / Master Creative Stitchery.....	pg. 9
Div. 118 - Machine Embroidery	pg. 10
Div. 102 - Needlepoint.....	pg. 10
Div. 103 - Crochet	pg. 11
Div. 104 - Knitting	pg. 11
Div. 106 - Large Quilts	pg. 13
Div. 107 - Amateur / Professional Quilt	pg. 14
Div. 108 - Professional / Master Quilters	pg. 14
Div. 109 - Small Quilts	pg. 15
Div. 112 - Lace / Open Work	pg. 16
Div. 111 - Rugs	pg. 16
Div. 113 - Weaving	pg. 17
Div. 114 - Spinning	pg. 18
Div. 115 - Basketry.....	pg. 19
Div. 116 - Professional / Master Basket Maker.....	pg. 19

ONLINE ENTRY REGISTRATION

TEXTILES DIVISIONS OPEN
May 2022

TEXTILES DIVISIONS CLOSE:
Wed., August 17, 2022, by 10pm

Online entry registration must be completed by deadlines listed. Print a copy of your on-line entry summary/receipt to bring with your items. See Online Entry Registration instructions on page 4.

BRINGING IN ENTRY ITEMS

Please bring a copy of your online entry summary/receipt with your item(s). **MAIL-IN ENTRIES WILL NOT BE ACCEPTED.**

TEXTILES DIVISIONS
Fri., August 19, 2022, 9am – 4pm
Sat., August 20, 2022, 9am – 4pm
Sun., August 21, 2022, 12pm – 6pm

ENTRY RELEASE/RETURN

ALL ENTRIES WILL BE RELEASED:
Tue., September 27, 9am – 8pm
Wed., September 28, 9am – 6pm

UNCLAIMED ITEMS WILL NOT BE STORED. ANYTHING REMAINING AFTER WEDNESDAY, SEPT. 28 WILL BE DONATED TO CHARITY OR DISCARDED.

ENTRY & RELEASE FOR SPECIAL CONTESTS

For certain classes and special contests, dates and times vary from the regular schedule above; these variations are noted in the class/contest information. ***Please read the information carefully to be sure of the date and time for the contests you wish to enter.***

The following contests have dates or times that deviate from the Regular Schedule. See contest information for details:

Div. 105 - Fastest Fingers in the West.....	pg. 12
Div. 110 - Quilt Challenge.....	pg. 12

HOME ARTS INFORMATION AND GENERAL RULES

WAYS TO PARTICIPATE

The Home Arts Department offers an opportunity for craft persons throughout the Puget Sound area and beyond to share the pleasure of their craft.

HANDCRAFTED ENTRIES

- **Textiles and Fiber Arts**
- **Preserved Foods ***
- **Culinary Arts ***
- **Special Contests ***

**See separate Home Arts - Foods Premium List*

The pride of creating something beautiful and/or delicious and then submitting it for competition is worthy of celebration, regardless of whether the entry wins an award. The competition serves to increase participants' skill levels and heighten the appreciation and interest of the general public.

**There are NO ENTRY FEES
in any of the Home Arts Divisions.**

DEMONSTRATIONS

- **Textiles and Fiber Arts**
- **Culinary Arts**

Many talented artists will be sharing knowledge by way of demonstrations every day between 10:30am – 9pm. To volunteer, call the Competitive Exhibits Office: (253) 841-5074.

AWARDS

Each division with at least three exhibitors will have a purple and gold Grand Champion rosette and prize awarded to the most outstanding entry of that division. A lavender and white Reserve Champion rosette will also be given in each qualifying division. There may be one blue, one red and one white ribbon given in each class. Honorable Mention ribbons may be awarded. Only purple, lavender, blue, red and Award of Merit ribbons will receive money or prize premiums. Premium checks will be mailed in November.

ABSOLUTELY NO INFORMATION ON PLACINGS OR AWARDS WILL BE ANNOUNCED PRIOR TO FAIR'S OPENING.

DISPLAYS

All award-winning entries will be displayed, and every effort will be made to display all other entries. However, we reserve the right to withhold non-award winning entries from display. This right will be exercised ONLY if there is not sufficient space to display said entry in a safe and attractive manner. Any item not displayed will be held in a secure storage area of the Home Arts Department and the exhibitor will be notified prior to The Fair opening.

JUDGING

Judges are selected from professionals or highly accredited amateur artists working within their field of expertise. Neither paid Fair employees nor volunteers are eligible to judge in the department for which they work. Paid Fair employees or volunteers who judge any show or contest outside the department they work for must be pre-approved by their department supervisor. Fair exhibitors, including exhibiting employees, are not eligible to judge in their entry divisions.

RECEIVING AND RETURN

Walk through the Gold Gate entrance on 9th Ave. SW, west of Meridian St. South on entry days. If you have heavy or oversized items you may drive through Gold Gate. Please refer to the Entry and Return Schedule on page 5 for receiving and release dates and times.

HOME ARTS ENTRIES - RULES

1. Entry registration must be made online for all Divisions by entry deadline. See page 4 for online entry step-by-step instructions and page 5 for entry schedule.
2. No entry fee will be charged.
3. All articles must be the handwork of the exhibitor. They must be finished within the last two years. No article can be exhibited a second year. NO SOILED OR OBVIOUSLY USED ITEMS WILL BE ACCEPTED.
4. ALL ITEMS WILL BE PLACED IN THE MOST SUITABLE CLASS. Each exhibitor shall be limited to ONE ENTRY PER CLASS; as to enter more would, in effect, be competing against oneself, i.e., one crocheted afghan, one crocheted pillow, etc. No pairs or sets except where specified. Entries may be reclassified by staff or judges.
5. The "OTHER" class will only be used if the item does not fit within any other class in a division.
6. All awards need not necessarily be awarded in each class at the discretion of the judge.
7. The Home Arts Department is for amateurs to compete and exhibit their work. Anyone grossing more than \$4000 per year from the sale of home arts-related products, or engaging in teaching a craft on a regular and structured class schedule, is considered a professional by The Washington State Fair and is not eligible to enter in the Home Arts Department, except for the professional/master sections in the quilting, creative stitchery, and basketry divisions. A quilt that is made by an amateur and a professional will go into the Amateur/ Professional Division.

Fourteen classes are offered for professional/master quilters, five classes for professional/master creative stitchers, and five classes for professional/master basket makers. They will compete ONLY with one another, and not with participants of amateur status.

Master crafts persons are exhibitors who have won these amateur division championships once. Each division must have at least three exhibitors competing for a Grand Championship to be awarded. See AWARDS previous page.

- 8. **CRAFT PERSONS MUST BE AT LEAST 16 YEARS OLD,** except where noted. No separate designations or discriminations can be made. We have no provision for children’s entries at this time, and feel that it is unfair to both the child and the judge to ask them to compete with adults.

Children ages 6–15 are encouraged to enter the Creative Kids Exhibit at the Spring Fair in April. You may download the Creative Kids premium list at www.thefair.com starting in February.

- 9. ALL ITEMS PLACED ON DISPLAY MUST REMAIN FOR THE FULL RUN OF THE FAIR. Only items not on display may be picked up before the end of The Fair.
- 10. The Washington State Fair assumes no responsibility for loss or damage. Every reasonable precaution will be used to protect items on display.

JUDGES’ SCORE CARD	
CRAFTSMANSHIP – Technical execution	
40% possible.....	_____
DEGREE OF DIFFICULTY	
20% possible.....	_____
DESIGN – Proportion, line, color, individuality	
20% possible.....	_____
PRESENTATION – Finishing	
20% possible.....	_____
	TOTAL _____

Please read [The Washington State Fair Departmental Exhibitors Rules and Regulations \(link on page 4\)](#) and the [Home Arts General Rules on pgs. 6-7](#). Exhibitors must adhere to the general rules and the specific rules below.
Entry and Release dates on page 5 and Calendar on page 2.

DIVISION 100 – SEWING

SOME THINGS JUDGES CONSIDER: Grain line, stitching, accuracy, pressing, seam finishing, grading and clipping, stains/soil, zippers and hems.

ADDITIONAL AWARDS:

Grand Champion – \$50 Gift Certificate

donated by Pacific Fabric,

2230 4th Ave South, Seattle

www.pacificfabrics.com

CELEBRATING 100 YEARS



Grand Champion - \$50

Reserve Grand Champion – \$25

CHILDREN’S WEAR

Class	1st	2nd
1000. EVERYDAY WEAR.....	\$10	\$5
1010. PARTY WEAR	\$10	\$5
1030. CHRISTENING DRESS OR SET	\$10	\$5
1032. COSTUME	\$10	\$5
1040. OTHER.....	\$10	\$5

TAILORING

Class	1st	2nd
1050. SUIT, MEN’S OR WOMEN’S.....	\$10	\$5
1060. COAT, BLAZER, JACKET	\$10	\$5

SEPARATES

Class	1st	2nd
1130. STRETCH FABRIC (swimsuit, ski wear, leotard, etc.)	\$10	\$5
1140. JACKET	\$10	\$5
1150. SKIRT, PANTS	\$10	\$5
1170. BLOUSE OR SHIRT.....	\$10	\$5
1190. DRESS, DAYTIME.....	\$10	\$5
1200. VEST	\$10	\$5
1205. OTHER.....	\$10	\$5

SPECIAL OCCASION

Class	1st	2nd
1210. WEDDING DRESS	\$10	\$5
1220. LONG PARTY DRESS.....	\$10	\$5
1230. SHORT PARTY DRESS.....	\$10	\$5
1250. COSTUME	\$10	\$5
1260. OTHER.....	\$10	\$5

MISCELLANEOUS

Class	1st	2nd
1280. NIGHTGOWN, SLIP, OTHER LINGERIE	\$10	\$5
1285. APRON	\$10	\$5
1290. PURSE/BAG.....	\$10	\$5
1300. DOLL CLOTHES (doll up to 18” optional) ...	\$10	\$5
1320. OTHER.....	\$10	\$5

SPECIAL SEWING TECHNIQUES

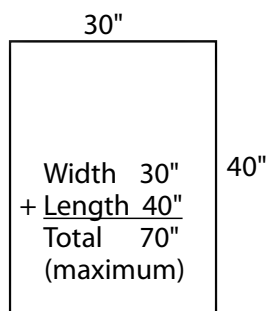
(Item constructed by exhibitor, i.e., no fusing or gluing on ready-made items)

Class	1st	2nd
1400. MANIPULATED SURFACE (e.g., pleating, woven strips).....	\$10	\$5
1402. SMOCKING	\$10	\$5
1410. EMBELLISHMENTS (e.g., hand embroidery, beading).....	\$10	\$5
1415. MACHINE EMBROIDERY EMBELLISHMENTS (free motion or computerized designs).....	\$10	\$5
1420. QUILTING TECHNIQUES, APPLIQUE, PATCHWORK.....	\$10	\$5

Please read [The Washington State Fair Departmental Exhibitors Rules and Regulations \(link on page 4\)](#) and the [Home Arts General Rules on pgs. 6-7](#). Exhibitors must adhere to the general rules and the specific rules below. [Entry and Release dates on page 5](#) and [Calendar on page 2](#).

DIVISION 101 – CREATIVE STITCHERY

All framed items must have strong WIRE hangers, no string or self-leveling hangers (e.g., $_/\backslash/\backslash/_$), and must not exceed



70" one width and one length combined, including frame. See example at left. Professional mounting and framing is permissible. Frame or glass is optional. No pairs or sets will be accepted. Judging will be based on completed piece including finishing and/or framing.

SOME THINGS JUDGES CONSIDER: Consistent direction of stitches, thread compatibility to fabric, proper tension, splitting threads, hoop outlines and/or soil, on-grain framing.

ADDITIONAL AWARDS:

Grand Champion – \$100

Reserve Grand Champion – \$25



The Evergreen Chapter of the Embroiderer's Guild of America

will award \$75 cash, a certificate, and a ribbon. The award will be based on originality and stitching excellence.

TRADITIONAL EMBROIDERY

Class	1st	2nd
2000. PICTURE.....	\$10	\$5
2010. SMALL ARTICLE.....	\$10	\$5
2020. MEDIUM ARTICLE.....	\$10	\$5
2030. LARGE ARTICLE.....	\$10	\$5
2040. YOUR ORIGINAL DESIGN.....	\$10	\$5

COUNTED THREAD

Aida cloth, cross stitch or drawn work.

For classes below, measurements should equal one length and one width combined.

Class	1st	2nd
2050. PICTURE, up to 24".....	\$10	\$5
2060. PICTURE, 25" to 36".....	\$10	\$5
2070. PICTURE, 37" to 48".....	\$10	\$5
2080. PICTURE, 49" to 70".....	\$10	\$5
2082. OTHER (ie. pillow, ornament).....	\$10	\$5

LINEN WEAVE, EVEN WEAVE OR DRAWN WORK

For classes below, measurements should equal one length and one width combined.

Class	1st	2nd
2090. PICTURE, up to 24".....	\$10	\$5
2091. PICTURE, 25" to 36".....	\$10	\$5
2092. PICTURE, 37" to 48".....	\$10	\$5

Revised: 07-26-2022

2095. PICTURE, 49" to 70".....	\$10	\$5
2100. CHRISTMAS STOCKING.....	\$10	\$5
2105. OTHER (ie. household item, pillowcase, etc.)..	\$10	\$5

HARDANGER

Class	1st	2nd
2111. HOUSEHOLD, up to 12" in diameter.....	\$10	\$5
2112. HOUSEHOLD, 12" to 24" in diameter.....	\$10	\$5
2113. HOUSEHOLD, larger than 24" in diameter..	\$10	\$5
2114. FRAMED.....	\$10	\$5
2115. OTHER (e.g. pulled, cut, mixed, garment, etc.)	\$10	\$5

OTHER STITCHERY

Class	1st	2nd
2118. BUNKA.....	\$10	\$5
2120. SMOCKING.....	\$10	\$5
(For Smocked Clothing, see Class 1402)		
2140. BRAZILIAN EMBROIDERY.....	\$10	\$5
2150. SILK RIBBON EMBROIDERY.....	\$10	\$5
2160. MULTI-MEDIA.....	\$10	\$5
2170. YOUR ORIGINAL DESIGN.....	\$10	\$5
2175. CREWEL EMBROIDERY.....	\$10	\$5
2180. OTHER.....	\$10	\$5

AWARD OF MERIT

At the conclusion of the contest judges may designate up to two stitchery entries (other than the Grand and Reserve Grand Champions) for Awards of Merit – \$25 premium and a rosette.

DIVISION 117 – PROFESSIONAL / MASTER CREATIVE STITCHERY

Five classes are offered for professional/master creative stitcher. They will compete ONLY with one another and not with participants of amateur status. See rule 7 on page 6 for the definition of a professional.

ADDITIONAL AWARDS:

Grand Champion – \$100

Reserve Grand Champion – \$25

(A minimum of three exhibitors is required for granting this award – see page 6, "AWARDS".)

Class	1st	2nd
2200. TRADITIONAL EMBROIDERY.....	\$10	\$5
2205. COUNTED THREAD (eg. cross stitch).....	\$10	\$5
2210. HARDANGER.....	\$10	\$5
2215. MACHINE EMBROIDERY.....	\$10	\$5
2220. OTHER STITCHERY.....	\$10	\$5

Please read [The Washington State Fair Departmental Exhibitors Rules and Regulations \(link on page 4\)](#) and the [Home Arts General Rules on pgs. 6-7](#). Exhibitors must adhere to the general rules and the specific rules below. Entry and Release dates on page 5 and Calendar on page 2.

DIVISION 118 – MACHINE EMBROIDERY

Entries will be judged on embroidery styles and elements only. Example – a garment or quilt submitted to this division will be judged on embroidery alone. To be judged as a whole, quilts should be entered in a quilting division and garments into clothing division (Division 100).

SOME THINGS JUDGES CONSIDER:

Design, stabilizing the fabric, correct upper and lower tension and jump stitch trimming.

ADDITIONAL AWARDS:

Grand Champion - \$100
Reserve Grand Champion - \$25

FREE MOTION

Class		1st	2nd
2300.	Large Quilt (at least 140 inches one length and one width combined)	\$10	\$5
2305.	Small Quilt (less than 140 inches one length and one width combined)	\$10	\$5
2310.	Adult Wearing Apparel	\$10	\$5
2315.	Child Wearing Apparel	\$10	\$5
2320.	Household Items	\$10	\$5
2325.	Other	\$10	\$5

PURCHASED DIGITIZED DESIGN

Class		1st	2nd
2330.	Large Quilt (at least 140 inches one length and one width combined)	\$10	\$5
2335.	Small Quilt (less than 140 inches one length and one width combined)	\$10	\$5
2340.	Adult Wearing Apparel	\$10	\$5
2345.	Child Wearing Apparel	\$10	\$5
2350.	Household Items	\$10	\$5
2355.	Other	\$10	\$5

YOUR ORIGINAL DIGITIZED DESIGN

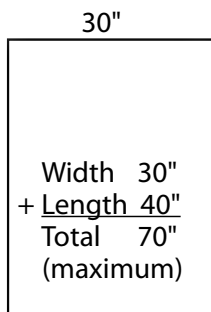
Class		1st	2nd
2360.	Large Quilt (at least 140 inches one length and one width combined)	\$10	\$5
2365.	Small Quilt (less than 140 inches one length and one width combined)	\$10	\$5
2370.	Adult Wearing Apparel	\$10	\$5
2375.	Child Wearing Apparel	\$10	\$5
2380.	Household Items	\$10	\$5
2385.	Other	\$10	\$5

IN THE HOOP

Class		1st	2nd
2390.	Large Quilt (at least 140 inches one length and one width combined)	\$10	\$5
2395.	Small Quilt (less than 140 inches one length and one width combined)	\$10	\$5
2400.	Other	\$10	\$5

DIVISION 102 – NEEDLEPOINT

All framed items must have strong WIRE hangers, no string or self-leveling hangers (i.e. _/\//\/_), and must not exceed 70" one width and one length combined, including frame. See example at left. Professional mounting and framing is permissible. Frame or glass is optional. No pairs or sets will be accepted. Judging will be based on completed piece including finishing and/or framing. No cross stitch will be accepted in this division.



SOME THINGS JUDGES CONSIDER:

Consistent direction of stitches, thread compatibility to fabric, proper tension, splitting threads, hoop outlines and/or soil, on-grain framing.

ADDITIONAL AWARDS:

Grand Champion – \$100
Reserve Grand Champion – \$25



The Evergreen Chapter of the Embroiderer's Guild of America

will award \$75 cash, a certificate, and a ribbon. The award will be based on originality and stitching excellence.

For classes below, measurements should equal one length and one width combined.

Class		1st	2nd
2510.	PETIT POINT (Greater than 24 stitches per inch and executed entirely in tent stitch) . . .	\$10	\$5
2520.	PICTURE, up to 24"	\$10	\$5
2530.	PICTURE, 25" to 36"	\$10	\$5
2540.	PICTURE, 37" to 48"	\$10	\$5
2550.	PICTURE, 49" to 70"	\$10	\$5
2560.	UNFRAMED NEEDLEPOINT PIECE	\$10	\$5
2580.	PAINTED CANVAS WITH STITCH GUIDE.	\$10	\$5
2590.	PAINTED CANVAS WITHOUT STITCH GUIDE	\$10	\$5

AWARD OF MERIT

At the conclusion of the contest judges may designate up to two needlepoint entries (other than the Grand and Reserve Grand Champions) for Awards of Merit – \$25 premium and a rosette.

Please read [The Washington State Fair Departmental Exhibitors Rules and Regulations \(link on page 4\)](#) and the [Home Arts General Rules on pgs. 6-7](#). Exhibitors must adhere to the general rules and the specific rules below.
Entry and Release dates on page 5 and Calendar on page 2.

DIVISION 103 – CROCHET

Afghans not to exceed 150 inches one width and one length combined, but must be at least 96 inches one width and one length combined, except Class 3050. No framed, mounted or lined crochet work will be accepted.

***ENTER CROCHETED THREADS IN DIVISION 112 ***

SOME THINGS JUDGES CONSIDER: Even stitches, even tension, blocking, even seams, cleanliness, ends, even outside edges

ADDITIONAL AWARDS:



Grand Champion – \$50 Gift Certificate **donated by Pacific Fabrics**, 2230 4th Ave. South, Seattle.
www.pacificfabrics.com

Grand Champion - \$50

Reserve Grand Champion – \$25

HOUSEHOLD ITEMS, CROCHET

Class	1st	2nd
3020. AFGHAN, PIECED.....	\$15	\$10
3030. AFGHAN, TUNISIAN (Afghan) STITCH	\$15	\$10
3040. AFGHAN, ONE PIECE	\$15	\$10
3050. AFGHAN, BABY	\$10	\$5
3090. MISCELLANEOUS SMALL ITEMS.....	\$5	\$3
3095. POT HOLDER	\$5	\$3
3100. PILLOW.....	\$5	\$3
3110. DOLL CLOTHES, 3 pieces or less (doll up to 18" optional – the judge must be able to see the inside of the clothes)	\$5	\$3
3115. BED DOLLS, Pillow type only (no stand).....	\$5	\$3
3118. HOLIDAY ITEM	\$5	\$3
3120. OTHER (eg. Pet Item)	\$5	\$3

WEARING APPAREL, CROCHET

Class	1st	2nd
3130. DRESS, COAT, SUIT, ETC.....	\$15	\$10
3140. SWEATER, VEST	\$10	\$5
3150. CHILDREN'S WEAR.....	\$5	\$3
3160. INFANT WEAR, SINGLE PIECE	\$5	\$3
3170. INFANT WEAR, SET.....	\$10	\$5
3180. SCARF, STOLE, SHAWL.....	\$5	\$3
3190. HAT	\$5	\$3
3195. PURSE	\$5	\$3
3200. MISCELLANEOUS SMALL ITEMS.....	\$5	\$3
3210. OTHER.....	\$5	\$3

DIVISION 104 – KNITTING

Afghans not to exceed 150 inches one width and one length combined. Thread bedspreads not to exceed 225 inches, one width and one length combined.

*** ENTER LACE TECHNIQUE BEDSPREADS, TABLECLOTHS AND DOILIES IN DIVISION 112 ***

SOME THINGS JUDGES CONSIDER: Even stitches, even tension, blocking, even seams, cleanliness, ends, even outside edges.

ADDITIONAL AWARDS:



Grand Champion – \$50 Gift Certificate **donated by Pacific Fabrics**, 2230 4th Ave. South, Seattle.
www.pacificfabrics.com

Grand Champion - \$50

Reserve Grand Champion – \$25

HAND KNIT HOUSEHOLD ARTICLES

Class	1st	2nd
3510. AFGHAN, pieced	\$15	\$10
3520. AFGHAN, one piece	\$15	\$10
3530. BABY AFGHAN.....	\$10	\$5
3550. DOLL CLOTHES, 3 pieces or less (doll up to 18" optional – the judge must see the inside of the clothes)	\$5	\$3
3555. HOLIDAY ITEM	\$5	\$3
3560. OTHER.....	\$5	\$3

HAND KNIT WEARING APPAREL

Class	1st	2nd
3570. DRESS, COAT, SUIT, ETC (adult).....	\$15	\$10
3580. SWEATER, ADULT – CARDIGAN	\$10	\$5
3590. SWEATER, ADULT – PULLOVER.....	\$10	\$5
3600. VEST	\$5	\$3
3610. DRESS, COAT, SUIT, ETC (children)	\$5	\$3
3612. SWEATER, CHILDRENS – CARDIGAN	\$10	\$5
3614. SWEATER, CHILDRENS – PULLOVER.....	\$10	\$5
3616. CHILDREN'S WEAR, SET	\$10	\$5
3620. INFANT WEAR, SINGLE PIECE	\$5	\$3
3630. INFANT WEAR, SET.....	\$10	\$5
3640. SCARF	\$5	\$3
3643. STOLE	\$5	\$3
3645. SHAWL	\$5	\$3
3650. HAT	\$5	\$3
3655. BAG	\$5	\$3
3660. SOCKS.....	\$5	\$3
3665. GLOVES, MITTENS.....	\$5	\$3
3670. OTHER.....	\$5	\$3
3675. USE OF A CIRCULAR KNITTING DEVICE (e.g., Knifty Knitter)	\$5	\$3

MACHINE KNITS

Class	1st	2nd
3700. AFGHAN.....	\$5	\$3
3705. ADULT WEAR	\$5	\$3
3720. INFANT WEAR	\$5	\$3
3728. OTHER.....	\$5	\$3

Please read [The Washington State Fair Departmental Exhibitors Rules and Regulations \(link on page 4\)](#) and the [Home Arts General Rules on pgs. 6-7](#). Exhibitors must adhere to the general rules and the specific rules below. Entry and Release dates on page 5 and Calendar on page 2.

DIVISION 105 – FASTEST FINGERS IN THE WEST CONTEST

Contest Yarn Provided by:
Cascade Yarn



These events will be held in the Home Arts Department, on the 2nd floor of the Pavilion. A maximum of 30 contestants will be accepted for each competition.

Four-ply knitting worsted, size eight (8) knitting needles and size one (1) crochet hook will be provided by the Washington State Fair. Duplicate awards will be given for work of equal quality. Tatting shuttle and thread provided by the Washington State Fair.

**All three Fastest Fingers contests are on:
MONDAY, SEPTEMBER 12**

You may enter either:

Online by 10 pm the day before the contest (see page 4 for instructions), or **at the Home Arts Dept.** Up to 1/2 hour before contest time.

FASTEST FINGERS IN THE WEST

Class	1st	2nd	3rd
3736. TATTING CONTEST – 11:00 AM ...	\$30	\$20	\$10

Class	1st	2nd	3rd
3738. KNITTING CONTEST – 1 PM	\$30	\$20	\$10

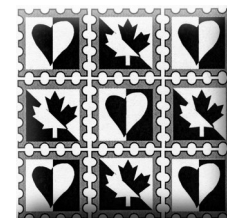
The winners of the tatting and knitting contests will be those contestants who have knitted or tatted the greatest number of stitches with correct tension and workmanship during the 15-minute period. Any incomplete stitch or dropped stitch will be deducted from the total number of stitches completed.

Class	1st	2nd	3rd
3740. CROCHETED GRANNY SQUARE CONTEST – 3 PM	\$30	\$20	\$10

The crocheted granny square contest will be judged on workmanship and completion of the greatest number of stitches using directions provided.

DIVISION 110 – QUILT CHALLENGE “OUTSIDE YOUR BOX”

Contest Fabric Provided by:
The Quilt Barn
2102 E Main Ave, Suite 102
Puyallup, WA 98372



The Quilt Challenge is open to all quilters ages 16 years and older.

Create a wall quilt using the theme, "Outside Your Box" as your inspiration.

Register your entry online by Sunday, August 14. When your online entry is received we will send you the 10 x 14 inch rectangle of fabric to begin this challenge project.

Refer to Calendar on page 2 or see dates in Entry & Release Regular Schedule on page 5 for Bringing In entry items and Entry Release/Return.

Class	1st	2nd	3rd
4180. "OUTSIDE YOUR BOX" QUILT CHALLENGE	\$50	\$30	\$20

Prizes and 10" x 14" fabric pieces are donated by **The Quilt Barn**, Puyallup, WA.

QUILT CHALLENGE RULES

Your creation must utilize all of the fabric provided. Additional "Challenge" fabric may not be used.

Quilts must not exceed 72 inches, one length and one width combined.

Additional fabrics, shape, techniques and embellishments are your choice.

Please read [The Washington State Fair Departmental Exhibitors Rules and Regulations \(link on page 4\)](#) and the [Home Arts General Rules on pgs. 6-7](#). Exhibitors must adhere to the general rules and the specific rules below.
Entry and Release dates on page 5 and Calendar on page 2.

DIVISION 106 – LARGE QUILTS

(At least 140 inches one length and one width combined)

Large quilts should be completed by only one person. Enter large quilts done by at least one amateur and one professional in Amateur/Professional Quilt Collaboration – Division 107

SOME THINGS JUDGES CONSIDER: Piecing/appliqué: technique, borders and sashing, quilting design and technique, binding or edges, corners, marking or soil.

Traditional quilts are defined as those made from historical designs that have been named and passed down from our ancestors. Contemporary quilts are “art quilts” that contain an element of creativity, are original and inventive, and are usually hung as art.



ADDITIONAL AWARDS:

Grand Champion –
 Baby Lock “Joy” sewing machine,
 valued at \$399, **donated by**
**Quality Sewing and Vacuum Center/
 Tacony Corp.**, 11 Western Washington
 locations.

Reserve Grand Champion – \$25

HAND QUILTED

These quilts are made by sewing layers of a quilt together by hand using needle and thread.

Class	1st	2nd
4000. PIECED	\$20	\$15
4004. APPLIQUÉED.....	\$20	\$15
4008. MIXED TECHNIQUES (e.g., appliquéd/pieced).....	\$20	\$15
4010. ORIGINAL DESIGN	\$20	\$15
4014. ART QUILTS.....	\$20	\$15
4012. Other.....	\$20	\$15

MACHINE QUILTED

DOMESTIC QUILTED

These quilts are designed with a home sewing machine.

Class	1st	2nd
4020. PIECED	\$20	\$15
4024. APPLIQUE	\$20	\$15
4028. MIXED TECHNIQUES (e.g., appliquéd/pieced).....	\$20	\$15
4032. ORIGINAL DESIGN	\$20	\$15
4034. ART QUILTS.....	\$20	\$15
4030. OTHER.....	\$20	\$15

FREEHAND LONG ARM QUILTED

These quilts are made specifically with a long arm sewing machine and the quilter guiding the stitched design.

Class	1st	2nd
4066. PIECED	\$20	\$15
4068. APPLIQUE	\$20	\$15
4070. MIXED TECHNIQUES (e.g., appliquéd/pieced).....	\$20	\$15
4072. ORIGINAL DESIGN	\$20	\$15
4074. ART QUILTS.....	\$20	\$15

COMPUTER LONG ARM QUILTED

These quilts are made specifically with a long arm sewing machine and a computer program.

Class	1st	2nd
4076. PIECED	\$20	\$15
4078. APPLIQUE	\$20	\$15
4080. MIXED TECHNIQUES (e.g., appliquéd/pieced).....	\$20	\$15
4082. ORIGINAL DESIGN	\$20	\$15
4084. ART QUILTS.....	\$20	\$15

MISCELLANEOUS QUILTING TECHNIQUES (See division 118 for machine embroidery.)

Class	1st	2nd
4040. TIED.....	\$20	\$15
4042. OTHER (e.g., yoyo, rag, cathedral window) ..	\$20	\$15

(No quilting machine entries will be accepted)

AMATEUR GROUP PROJECT

(Two or more persons)

Class	1st	2nd
4050. HAND QUILTED – any technique.....	\$20	\$15
4052. SEWING MACHINE QUILTED – any technique.....	\$20	\$15

FIRST TIME PARTICIPANTS

Class	1st	2nd
4060. HAND QUILTED – any technique.....	\$20	\$15
4062. SEWING MACHINE QUILTED – any technique	\$20	\$15
4064. OTHER QUILTING TECHNIQUE	\$20	\$15

AWARD OF MERIT

At the conclusion of the contest in each of the four Quilting Divisions, judges may designate up to two quilt entries (other than Grand and Reserve Grand Champions) for Awards of Merit (rosettes and \$25 premiums).

Please read [The Washington State Fair Departmental Exhibitors Rules and Regulations \(link on page 4\)](#) and the [Home Arts General Rules on pgs. 6-7](#). Exhibitors must adhere to the general rules and the specific rules below.
 Entry and Release dates on page 5 and Calendar on page 2.

DIVISION 107 – AMATEUR / PROFESSIONAL QUILT COLLABORATION

This must be a quilt done by two or more persons including at least one amateur and one professional. See rule 7 on page 6 for the definition of a professional.

Large quilts measure at least 140 inches, one width and one length combined. Small quilts measure less than 140 inches, one length and one width combined.

Traditional quilts are defined as those made from historical designs that have been named and passed down from our ancestors. Contemporary quilts are “art quilts” that contain an element of creativity, are original and inventive and are usually hung as art.

ADDITIONAL AWARDS:

Grand Champion – \$100
 Reserve Grand Champion – \$25

Class	1st	2nd
4100. HAND QUILTED - large	\$20	\$15
4102. HAND QUILTED - small	\$20	\$15
4104. PIECED – large, machine quilted	\$20	\$15
4106. PIECED – small, machine quilted	\$20	\$15
4108. APPLIQUE - large	\$20	\$15
4109. APPLIQUE - small	\$20	\$15
4119. MIXED TECHNIQUES - large	\$20	\$15
4122. MIXED TECHNIQUES - small	\$20	\$15
4120. ORIGINAL DESIGN - large	\$20	\$15
4124. ORIGINAL DESIGN - small	\$20	\$15
4126. ART QUILTS - large	\$20	\$15
4128. ART QUILTS - small	\$20	\$15

DIVISION 108 – PROFESSIONAL / MASTER QUILTERS

These classes are offered for professional/master quilters. They will compete ONLY with one another and not with participants of amateur status. See rule 7 on page 6 for the definition of a professional. A master quilter is one who has won a Washington State Fair, amateur division once or served as a Washington State Fair quilt judge.

Large quilts measure at least 140 inches, one width and one length combined. Small quilts measure less than 140 inches, one length and one width combined.

Traditional quilts are defined as those made from historical designs that have been named and passed down from our ancestors. Contemporary quilts are “art quilts” that contain an element of creativity, are original and inventive and are usually hung as art.

ADDITIONAL AWARDS:

Grand Champion – \$100
 Reserve Grand Champion – \$25

Class	1st	2nd
4150. HAND QUILTED – large	\$20	\$15
4152. HAND QUILTED – small	\$20	\$15
4154. PIECED– large, machine quilted	\$20	\$15
4156. PIECED – small, machine quilted	\$20	\$15
4158. APPLIQUE – large	\$20	\$15
4176. APPLIQUE - small	\$20	\$15
4169. MIXED TECHNIQUES - large	\$20	\$15
4178. MIXED TECHNIQUES - small	\$20	\$15
4174. ORIGINAL DESIGN - large	\$20	\$15
4180. ORIGINAL DESIGN - small	\$20	\$15
4182. ART QUILTS - large	\$20	\$15
4184. ART QUILTS - small	\$20	\$15
4170. APPAREL AND MISC. ITEMS	\$20	\$15
4172. GROUP PROJECT	\$20	\$15

Please read [The Washington State Fair Departmental Exhibitors Rules and Regulations \(link on page 4\)](#) and the [Home Arts General Rules on pgs. 6-7](#). Exhibitors must adhere to the general rules and the specific rules below.
Entry and Release dates on page 5 and Calendar on page 2.

DIVISION 109 – SMALL QUILTS

(Less than 140 inches, one length and one width combined)

Small quilts should be completed by only one person.

Enter small quilts done by at least one amateur and one professional in Amateur/Professional Quilt Collaboration – Division 107.

NOTE: Quilt stitching must be visible from the back of the quilt.

ADDITIONAL AWARDS:

Grand Champion – \$100
 Reserve Grand Champion – \$25

HAND QUILTED

These quilts are made by sewing layers of a quilt together by hand using needle and thread.

Class	1st	2nd
4200. PIECED	\$20	\$15
4204. APPLIQUE	\$20	\$15
4208. MIXED TECHNIQUES (e.g., appliquéd/pieced).....	\$20	\$15
4209. ORIGINAL DESIGN	\$20	\$15
4212. ART QUILTS.....	\$20	\$15
4210. OTHER.....	\$20	\$15

MACHINE QUILTED

DOMESTIC MACHINE

These quilts are designed with a home sewing machine.

Class	1st	2nd
4220. PIECED	\$20	\$15
4224. APPLIQUE	\$20	\$15
4228. MIXED TECHNIQUES (e.g., appliquéd/pieced).....	\$20	\$15
4229. ORIGINAL DESIGN	\$20	\$15
4232. ART QUILTS.....	\$20	\$15
4230. OTHER.....	\$20	\$15

FREEHAND LONG ARM QUILTED

These quilts are made specifically with a long arm sewing machine and the quilter guiding the stitched design.

Class	1st	2nd
4290. PIECED	\$20	\$15
4292. APPLIQUE	\$20	\$15
4294. MIXED TECHNIQUES (e.g., appliquéd/pieced).....	\$20	\$15
4296. ORIGINAL DESIGN	\$20	\$15
4298. ART QUILTS.....	\$20	\$15

COMPUTERIZED LONG ARM QUILTED

These quilts are made specifically with a long arm sewing machine and a computer program.

Class	1st	2nd
4300. PIECED	\$20	\$15
4302. APPLIQUE	\$20	\$15
4304. MIXED TECHNIQUES (e.g., appliquéd/pieced).....	\$20	\$15
4306. ORIGINAL DESIGN	\$20	\$15
4308. ART QUILTS.....	\$20	\$15

BABY QUILTS

HAND QUILTED

These quilts are made by sewing layers of a quilt together by hand using needle and thread.

Class	1st	2nd
4240. PIECED	\$10	\$5
4244. MIXED TECHNIQUE	\$10	\$5

MACHINE QUILTED

DOMESTIC MACHINE

These quilts are designed with a home sewing machine.

Class	1st	2nd
4250. PIECED	\$10	\$5
4256. MIXED TECHNIQUE	\$10	\$5

FREEHAND LONG ARM QUILTED

These quilts are made specifically with a long arm sewing machine and the quilter guiding the stitched design.

Class	1st	2nd
4310. PIECED	\$10	\$5
4312. MIXED TECHNIQUE	\$10	\$5

COMPUTERIZED LONG ARM QUILTED

These quilts are made specifically with a long arm sewing machine and a computer program.

Class	1st	2nd
4314. PIECED	\$10	\$5
4316. MIXED TECHNIQUE	\$10	\$5

AMATEUR GROUP PROJECTS

(Two or more persons)

Class	1st	2nd
4260. HAND QUILTED – any technique.....	\$10	\$5
4262. MACHINE QUILTED – any technique	\$10	\$5

Please read [The Washington State Fair Departmental Exhibitors Rules and Regulations \(link on page 4\)](#) and the [Home Arts General Rules on pgs. 6-7](#). Exhibitors must adhere to the general rules and the specific rules below.

Entry and Release dates on page 5 and Calendar on page 2.

MISCELLANEOUS

QUILTING TECHNIQUES

Class		1st	2nd
4265.	TIED.....	\$10	\$5
4267.	OTHER (Yo-Yo, Cathedral, Crazy, Rag, Whole Cloth	\$10	\$5

PATCHWORK OR QUILTED ITEMS

Class		1st	2nd
4272.	PILLOW.....	\$10	\$5
4274.	MINIATURE QUILT (18" wide and 18" long, or less)	\$10	\$5
4276.	OTHER.....	\$10	\$5

FIRST TIME PARTICIPANT

Class		1st	2nd
4278.	HAND QUILTED – any technique.....	\$10	\$5
4280.	MACHINE QUILTED – any technique	\$10	\$5
4282.	OTHER QUILTING TECHNIQUE	\$10	\$5

Please read [The Washington State Fair Departmental Exhibitors Rules and Regulations \(link on page 4\)](#) and the [Home Arts General Rules on pgs. 6-7](#). Exhibitors must adhere to the general rules and the specific rules below.
Entry and Release dates on page 5 and Calendar on page 2.

DIVISION 112 – LACE / OPEN WORK

Front and back of work must be visible.

ADDITIONAL AWARDS:

Grand Champion – \$100
 Reserve Grand Champion – \$25

BOBBIN LACE

Class	1st	2nd
5000. ALL-LACE PROJECTS, SMALL, up to 6" x 6" (e.g., book marks, medallions, etc.)	\$10	\$5
5005. ALL-LACE PROJECTS, LARGE, Larger than 6" x 6" (e.g., pictures, doilies, etc.)	\$10	\$5
5010. LACE AND FABRIC COMBINED	\$10	\$5

NEEDLE MADE LACE

*SEE DIVISION 101 FOR HARDANGER

Class	1st	2nd
5030. DRAWN, HOUSEHOLD (small – up to 12" in diameter)	\$10	\$5
5040. DRAWN, HOUSEHOLD (medium – 12" to 24" in diameter)	\$10	\$5
5050. DRAWN, HOUSEHOLD (larger than 24" in diameter, no mounting)	\$10	\$5
5080. OTHER (e.g., pulled, cut, mixed, garment etc.)	\$10	\$5

TOOL MADE LACE – TATTING

Class	1st	2nd
5090. TATTING, DOILY	\$10	\$5
5100. TATTING, ORNAMENT, JEWELRY	\$10	\$5
5120. TATTING, TRIMMED ITEM	\$5	\$3
5121. TATTING, 3-D ITEM	\$5	\$3
5122. TATTING, OTHER	\$5	\$3

TOOL MADE LACE – CROCHET

Class	1st	2nd
5126. CROCHET, ORNAMENT	\$5	\$3
5130. CROCHET (small - up to 12" in diameter)	\$5	\$3
5135. CROCHET (medium - 13" to 24" in diameter)	\$5	\$3
5140. CROCHET (larger than 24" in diameter)	\$10	\$5
5145. CROCHET – TABLECLOTH, THREAD (not to exceed 225" width and length combined)	\$20	\$15
5146. CROCHET – BEDSPREAD, THREAD (not to exceed 225" width and length combined)	\$20	\$15
5147. CROCHET – GARMENTS, thread	\$10	\$5

5148. CROCHET – INFANT WEAR (3 pieces or less)	\$10	\$5
5150. CROCHET DOLL CLOTHES, 3 pieces or less (doll up to 18" optional – the judge must see the inside of the clothes)	\$5	\$3
5151. CROCHET, HOUSEHOLD ITEM	\$5	\$3
5154. CROCHET CLOTHING ACCESSORIES	\$5	\$3
5157. CROCHET YARN MADE LACE	\$5	\$3
5158. CROCHET, OTHER	\$5	\$3

TOOL MADE LACE – KNIT

Class	1st	2nd
5162. KNIT – TABLECLOTH OR BEDSPREAD, thread (not to exceed 225" width and length combined)	\$20	\$15
5164. KNIT – GARMENTS (very fine yarn only)	\$10	\$5
5166. KNIT – HOUSEHOLD ITEM	\$5	\$3
5167. KNIT – BEADED ITEM	\$5	\$3
5168. KNIT – CLOTHING ACCESSORIES	\$5	\$3
5172. KNIT – YARN MADE LACE	\$5	\$3
5173. KNIT, OTHER	\$5	\$3

DIVISION 111 – RUGS

Rugs may not exceed 192 inches, one width and one length combined. Hangings may be mounted but must not exceed 70 inches, one length and one width combined, including mountings.

ADDITIONAL AWARDS:

Grand Champion – \$100
 Reserve Grand Champion – \$25

Class	1st	2nd
4500. LATCHET	\$10	\$5
4520. SHIRRET OR RUFFLE	\$10	\$5
4525. HOOKED, PRIMITIVE	\$10	\$5
4527. HOOKED, FINE SHADING	\$10	\$5
4530. CROCHET	\$10	\$5
4535. YOUR ORIGINAL DESIGN, ANY TYPE	\$10	\$5
4540. RUG TYPE WALL HANGING	\$10	\$5
4550. BRAIDED	\$10	\$5
4555. PILLOW USING ANY RUG TECHNIQUE	\$10	\$5
4560. OTHER	\$10	\$5

All soft toys are to be entered in Hobby Hall. To enter sewn, crocheted and knit doll CLOTHES ONLY, see Home Arts Divisions 100, 103 and 104.

Please read [The Washington State Fair Departmental Exhibitors Rules and Regulations \(link on page 4\)](#) and the [Home Arts General Rules on pgs. 6-7](#). Exhibitors must adhere to the general rules and the specific rules below.
Entry and Release dates on page 5 and Calendar on page 2.

DIVISION 113 – WEAVING



ADDITIONAL AWARDS:

Grand Champion –
 Baby Lock “Jubilant” Sewing Machine
 valued at \$699 **donated by**
Quality Sewing and Vacuum Center/
Tacony Corp., 11 Western Washington
 locations. www.quiltsewing.com

Reserve Grand Champion – \$25

HANDWOVEN HOUSEHOLD ARTICLE

Please include fiber content on a 3 x 5 inch index card.

Class	1st	2nd
5510. BLANKET, AFGHAN OR COVERLET	\$10	\$5
5515. BLANKET, AFGHAN OR COVERLET, (more than 4 harnesses).....	\$10	\$5
5520. TABLE RUNNER, SET OF 4 PLACE MATS OR TABLECLOTH.....	\$10	\$5
5525. TABLE RUNNER, SET OF 4 PLACE MATS OR TABLECLOTH (more than 4 harnesses)	\$10	\$5
5530. BATH OR KITCHEN TOWEL.....	\$5	\$3
5535. BATH OR KITCHEN TOWEL (more than 4 harnesses)	\$5	\$3
5540. YARDAGE (3 yard min., finished for intended use, state intended use)	\$10	\$5
5550. TAPESTRY.....	\$10	\$5
5560. HANDWOVEN RUG.....	\$10	\$5
5565. OTHER.....	\$5	\$3

HANDWOVEN GARMENT

Please include fiber content on a 3 x 5 inch index card.

Class	1st	2nd
5570. OUTERWEAR (coat, poncho, cape)	\$15	\$10
5585. BLOUSE SHIRT, SKIRT OR DRESS	\$10	\$5
5590. VEST OR TABARD	\$10	\$5
5595. OTHER GARMENT (embellishment woven with novelty yarn).....	\$10	\$5
5610. SHAWL, STOLE OR SHRUG.....	\$10	\$5
5615. SCARF.....	\$5	\$3
5620. ACCESSORIES.....	\$5	\$3

Please read [The Washington State Fair Departmental Exhibitors Rules and Regulations \(link on page 4\)](#) and the [Home Arts General Rules on pgs. 6-7](#). Exhibitors must adhere to the general rules and the specific rules below.
Entry and Release dates on page 5 and Calendar on page 2.

DIVISION 114 – SPINNING

ADDITIONAL AWARDS:
 Grand Champion – \$100
 Reserve Grand Champion – \$25

HANDSPUN YARN

Please specify intended use, skein weight, yardage and fiber content on a 3x5 inch index card. Skein must be 1 oz. or more in weight. Yarn should be wound on a two-yard niddy-noddy and gently figure-eight tied in four places with same or coordinating yarn.

Class	1st	2nd
6000. WOOL – SINGLES	\$5	\$3
6005. WOOL – 2 PLY – fine.....	\$5	\$3
6008. WOOL – 2 PLY – medium.....	\$5	\$3
6010. WOOL – 2 PLY – heavy	\$5	\$3
6014. WOOL – MULTIPLE PLY	\$5	\$3
6016. DROP SPINDLE YARN.....	\$5	\$3
6020. BLENDED FIBERS.....	\$5	\$3
6022. NOVELTY YARN, unusual technique.....	\$5	\$3
6028. SILK	\$5	\$3
6030. HAND DYED YARN,.....	\$5	\$3
6038. PLANT FIBER (e.g., cotton, linen, ramie)	\$5	\$3
6040. OTHER ANIMAL FIBER (e.g., dog, mohair)....	\$5	\$3

USE OF HANDSPUN YARN

Include a 3 foot butterfly of yarn and fiber content on a 3 x 5 inch index card.

Class	1st	2nd
6050. LOOM WOVEN ARTICLE	\$10	\$5
6055. LOOM WOVEN ARTICLE, (using novelty yarn)	\$10	\$5
6070. KNITTED SWEATER.....	\$10	\$5
6075. KNITTED ARTICLES (items not found in other classes)	\$10	\$5
6076. KNITTED ARTICLES (using novelty yarn)....	\$10	\$5
6080. OTHER TECHNIQUES	\$10	\$5
6090. SMALL ARTICLES, (mittens, hats, etc.).....	\$5	\$3
6095. SOCKS.....	\$5	\$3
6100. BABY CLOTHES – up to 3 pieces	\$5	\$3

USE OF FLEECE OR FELTED WOOL

Please include fiber content on a 3 x 5 inch index card.

Class	1st	2nd
6110. NON-WOVEN FELTED ARTICLE – FLAT.....	\$10	\$5
6115. NON-WOVEN FELTED ARTICLE – 3-D.....	\$10	\$5
6120. WADMAL ARTICLE	\$10	\$5
6125. NUNO FELTING	\$10	\$5
6130. OTHER.....	\$10	\$5

Please read [The Washington State Fair Departmental Exhibitors Rules and Regulations \(link on page 4\)](#) and the [Home Arts General Rules on pgs. 6-7](#). Exhibitors must adhere to the general rules and the specific rules below.
 Entry and Release dates on page 5 and Calendar on page 2.

DIVISION 115 – BASKETRY

ADDITIONAL AWARDS:

Grand Champion – \$100

Reserve Grand Champion – \$25

(A minimum of three exhibitors is required for granting this award. See page 6 “AWARDS”)

COILED AND KNOTTED

Class		1st	2nd
6140.	FUNCTIONAL	\$10	\$5
6145.	FREE FORM	\$10	\$5
6155.	OTHER.....	\$10	\$5

TWINED

Class		1st	2nd
6160.	FUNCTIONAL	\$10	\$5
6165.	FREE FORM	\$10	\$5
6170.	MINIATURE, 4" x 4" x 4" max.....	\$10	\$5
6175.	OTHER.....	\$10	\$5

WOVEN – SPLINTWORK AND PLAITING

Class		1st	2nd
6180.	FUNCTIONAL	\$10	\$5
6185.	FREE FORM	\$10	\$5
6190.	MINIATURE, 4" x 4" x 4" max.....	\$10	\$5
6195.	OTHER.....	\$10	\$5

RIB STYLE AND WICKER WORK

Class		1st	2nd
6200.	FUNCTIONAL	\$10	\$5
6215.	OTHER.....	\$10	\$5

MISCELLANEOUS VESSELS

(e.g., Folded, Looped, Gourds incorporating Basketry Techniques)

Class		1st	2nd
6220.	FUNCTIONAL	\$10	\$5
6225.	FREE FORM	\$10	\$5
6235.	OTHER.....	\$10	\$5

DIVISION 116 – PROFESSIONAL / MASTER BASKET MAKER

Five classes are offered for professional/master basket makers. They will compete ONLY with one another and not with participants of amateur status. See rule 7 on page 6 for the definition of a professional. A master basket maker is one who has won an amateur division once, been a recipient of ribbons at a national basketry show or served as a Washington State Fair basketry judge.

ADDITIONAL AWARDS:

Grand Champion – \$100

Reserve Grand Champion – \$25

(A minimum of three exhibitors is required for granting this award – see page 6, “AWARDS”.)

Class		1st	2nd
6300.	COILED AND KNOTTED.....	\$10	\$5
6305.	TWINED	\$10	\$5
6310.	WOVEN – splint work and plaiting	\$10	\$5
6315.	RIB STYLE AND WICKER WORK.....	\$10	\$5
6320.	MISCELLANEOUS VESSELS (e.g., folded, looped, gourds incorporating basketry techniques).....	\$10	\$5

AWARD OF MERIT

At the conclusion of the contest in Basketry, judges may designate one entry in each Basketry division (other than Grand and Reserve Grand Champions) for Awards of Merit (rosettes and \$25 premiums).

PLEASE NOTE:

Please see separate

HOME ARTS - FOODS PREMIUM LIST
 for **Preserved Foods**, **Culinary Arts**
 and **Table Setting** entry information.

Click here:

[COMPETITIVE EXHIBIT ENTRIES](#)