

Project: _____

Part#: _____

Type: _____

Back-lit LED Panel

The EnVision LED Back-lit Panel has a unique modern design configured to combine high performance LED chips and our leading technology diffuser, which makes the ideal solution for any commercial lighting need. This high efficient luminaire provides long-life and uniform illumination, in addition to being equipped with a 0-10V dimmable driver.

Applications:

- Suspended Installation
- Commercial Lighting
- Recessed Lighting
- General Indoor Lighting

Product Information:

- Even light distribution
- Damp location rated
- 110° Beam angle
- Dimmable: Compatible with 0-10V dimmers down to 5%
- No yellowing of the lens

2X4

2X2

1X4

LED - BPL -	Size/Shape/Watts	Color	Accessories	BMS	EMB	Warranty
1	2	3	4	5	6	7

1	Product	2	Size/Shape/Watts	3	Color	4	Accessories	5	BMS	6	EMB	7	Warranty
LED-BPL	Back-lit Panel	1X4-20W	20W (2,600lm)	35K	3500K	(Blank)	None	(Blank)	None	(Blank)	None	(Blank)	5 Year (incl.)
		1X4-30W-50K	30W (3,900lm)	40K	4000K	SM	Surface Mount Frame Kit	BMS	Bi-Level Motion Sensor	EMB	Emergency Backup (External 15W)	10YR	10 Year
		2X2-20W	20W (2,600lm)	50K	5000K	FLNG	Flange (Drywall) Kit						
		2X2-30W-50K	30W (3,900lm)			SK	Suspension Kit						
		2X4-30W	30W (3,900lm)										
		2X4-40W-50K	40W (5,200lm)										

5000K Only available
for certain wattages
See #2 for more info

FEATURES**Unique Back-Lit Design**

The unique back-lit design provides a diffuse, shadow-less light

Integrated Driver

Flicker-free integrated driver, 0-10V dimmable

Powder-Coated white frame**Emergency Backup**

Optional 90 minute emergency backup

Frosted Lens

No UV, no yellowing, no LGP

Optional Accessories

Surface Mount Frame



Flange (Drywall) Kit



Emergency Backup



Suspension Kit

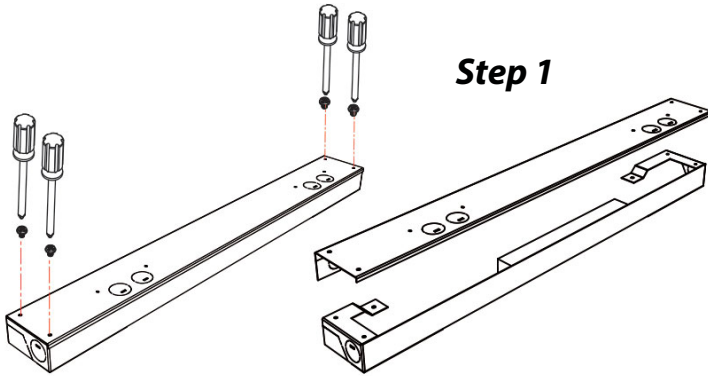
Panel Accessories

Model	Description
LED-PNL-1X4-SM	Surface Mount Frame 1x4
LED-PNL-2X2-SM	Surface Mount Frame 2x2
LED-PNL-2X4-SM	Surface Mount Frame 2x4
LED-PNL-1X4-FLNG	Flange (Drywall) Kit for Panels 1x4
LED-PNL-2X2-FLNG	Flange (Drywall) Kit for Panels 2x2
LED-PNL-2X4-FLNG	Flange (Drywall) Kit for Panels 2x4
LED-PNL-1X4-SK	Suspension Kit for Panels 1x4
LED-PNL-2X2-SK	Suspension Kit for Panels 2x2
LED-PNL-2X4-SK	Suspension Kit for Panels 2x4
LED-EMB-15W-LV-SS	External 15W Emergency Backup
HD407V-CR	Bi-Level Motion Sensor

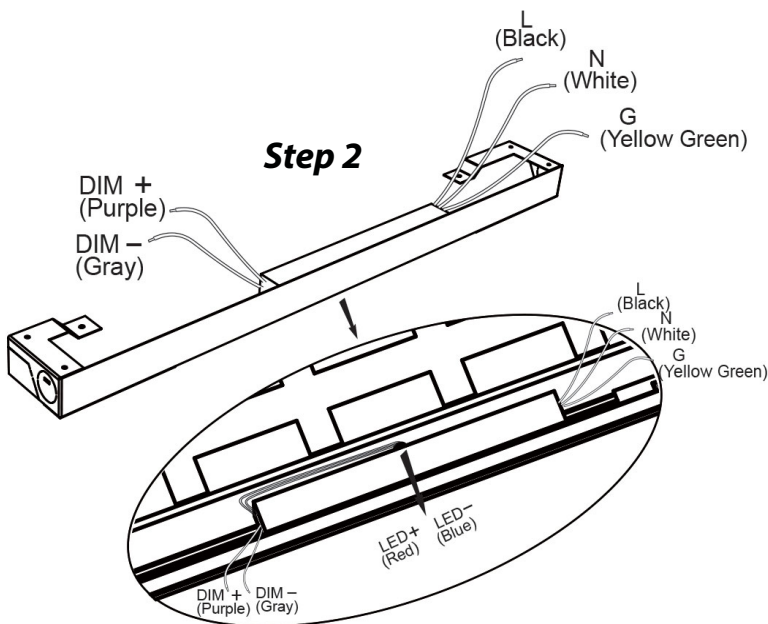
Installation Instructions

Regular Installation

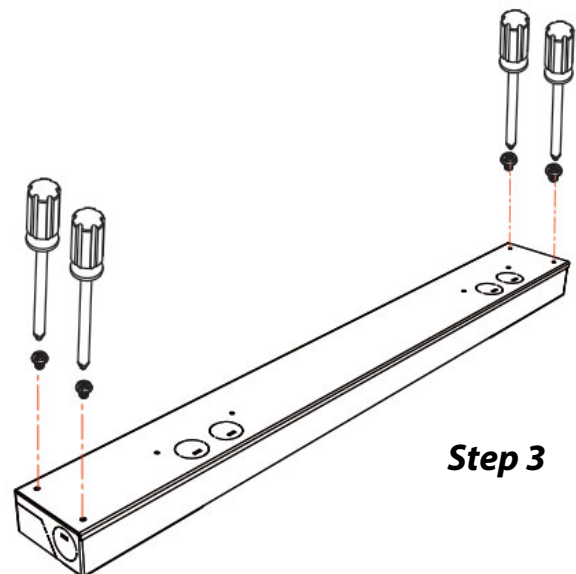
Step 1: Open the cover of junction box with phillips screwdriver



STEP 2: For AC input, connect neutral wire (White) to AC-N, Live wire (Black) to AC-L and Ground wire (Yellow Green) to the screw wire logo. For 0-10V dimmer wiring: connect the dimmer+ wire to the DIM+, connect the dimmer- wire to the DIM-.



Step 3: Put the cover back and tighten screws



Installation Instructions

Recessed Installation in Suspended Grid Ceiling

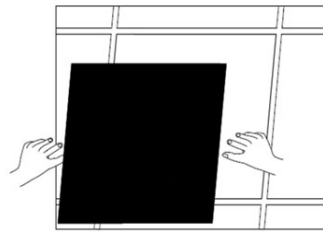
Step 1: Move away ceiling tile

Step 2: Connect power supply

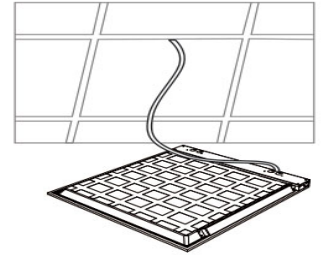
Step 3: Put the panel light into framework

Step 4: Finish the installation

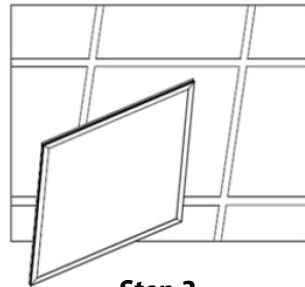
T-Bar clips should be bent out to provide additional safety and support. Additional support means may be required by local or national codes. Hold provided may be used to further secure fixture from above.



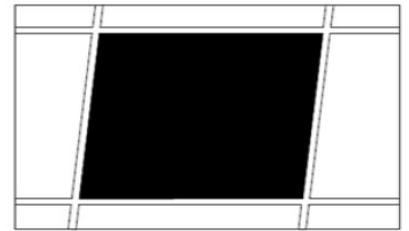
Step 1



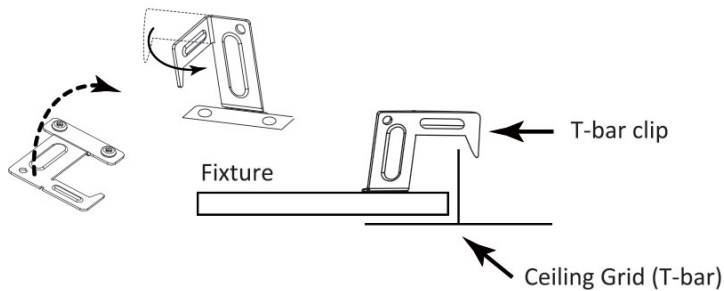
Step 2



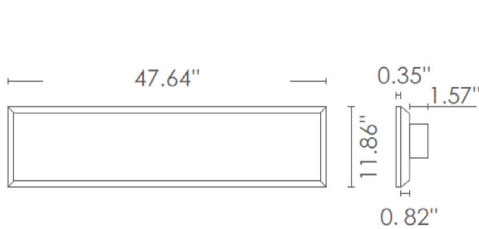
Step 3



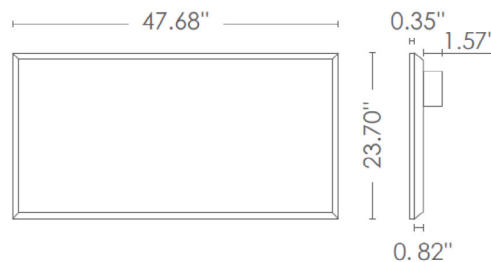
Step 4



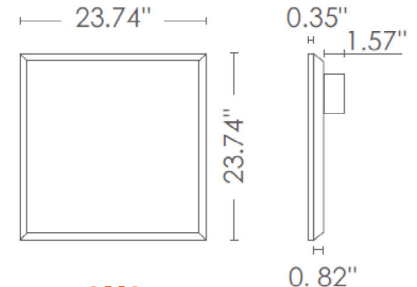
Dimensions



1X4



2X4



2X2