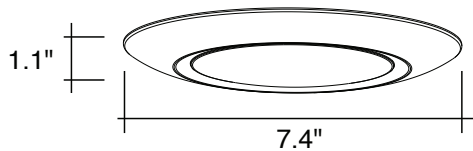


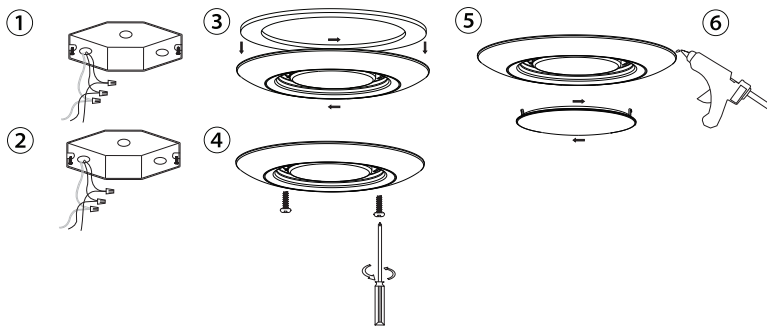
LED LOW PROFILE SURFACE DISK LIGHT MOUNTING INSTRUCTIONS

LED Disk Light provides surface mount light for new construction applications. Unit fits most 4" junction boxes and can replace 5", 6" recessed can lights to eliminate baffles & fire rated boxes. It also is suitable for use in dry, damp or wet locations.



WARNING: For your safety read and understand instructions completely before starting installation. Before wiring to power supply, turn off electricity at the fuse or circuit breaker box.

SURFACE MOUNT INSTALLATION



- STEP 1** Prior to installation. Please install two screws (furnished) into the junction box. Do not drive screws completely to the end of the junction box.
- STEP 2** Connect supply wires to wires in fixture wiring box with proper size wire nuts or push wires into "push-in" connector. Connect white to white, black to black and green or bare copper wire to bare copper wire.
- STEP 3** The ground wire at the surface junction box may need to be secured to a ground screw.
- STEP 4** With a Phillips screwdriver, attach the disk light tightly to the J-Box.
- STEP 5** Complete the installation by twisting the diffuser on the disk light aluminum enclosure and lock the diffuser in place.
- STEP 6** The edge of the fixture and the ceiling use waterproof silicone to seal.

WARNING

Risk of fire
Supply conductors (power wires) connecting the fixture must be rated minimum 90°C if uncertain, consult an electrician.

Risk of electric shock
disconnect power at fuse or circuit breaker before installing or servicing.

Risk of fire/electric shock
If not qualified, consult an electrician.

TECHNICAL SPECIFICATIONS

Voltage 120V, 60Hz AC operation
Wattage 15w-28pcs LED chips
Lumens 15W, 1000 Lumens, CRI90
Diffuser Translucent White PC Opal Diffuser
Hardware All mounting screws and wire connectors
Tool Use Philips screw driver and glue gun
Warranty Five year, limited warranty