

# Detachable Motion Sensor



Project: \_\_\_\_\_ Part #: \_\_\_\_\_  
Type: \_\_\_\_\_

Sensors



## Features:

- 5.8GHz microwave motion sensor with dimmable function
- Suitable for tri-proof light
- Tri-level control by 1-10V output
- Detachable version flexible installation
- Remote control
- 5 year warranty



ON/OFF  
CONTROL



DETECTION  
AREA



HOLD  
TIME



DAYLIGHT  
THRESHOLD



STAND-BY  
PERIOD



STAND-BY  
DIMMING



REMOTE  
CONTROL  
SETTINGS

## TECHNICAL DATA

Operating voltage	120-277 VAC 50/60Hz
Switching capacity	Max.3.0A@120Vac,Max.2.0A@277Vac
Stand-by power	<1W
Detection area	50%/100%
Hold time	5s/30s/1min/10min
Daylight threshold	2Lux/10Lux/50Lux/Disable
Stand-by period	0s/30s/20min/+∞
Stand-by dimming level	10%/20%/30%/50%
Microwave frequency	5.8GHz ± 75MHz
Microwave power	<0.3mW
Interfaces	6-pole pluggable clamp terminal (L,N,N.L,1-10v+,1-10v-) for 0.75-1.5mm² cable
Mounting height	Max.6m(ceiling mounted);Max.3m(wall mounted)
Detection range	Max.ø14m(ceiling mounted);Max.10m(wall mounted)
Detection angle	30°-150°
Operating temperature	-20°C~+60°C
IP rating	IP20

## Series

**HD-407V-CR**

1W • 120-277V

Specs and model numbers are subject to change with or without notice.

## APPLICATION

### 1. Automatic ON/OFF Function:

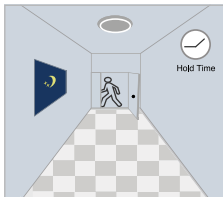
Light on when detect movement and off after people leave at night. Applications: Corridor, Staircase.



With sufficient daylight, even when motion detected, light remains OFF.



With insufficient daylight, when motion detected, light ON.



After the last detection and the present hold time elapsed, light OFF.

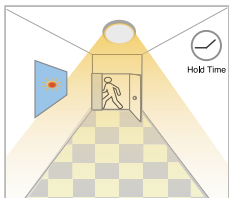
### 2. No Daylight Function

The daylight threshold is set to "Disable".

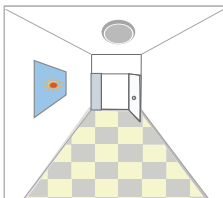
Light on when detect movement, After people leave, Light off after stand-by period. Applications: Dim places such as Basement Parking, Underpass.



When motion is detected, the sensor will switch on the light to 100% brightness.

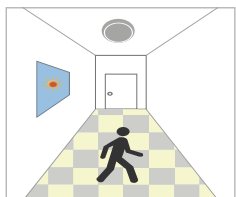


After people leave the detection area, light remains 100% brightness within hold time.



After the last detection and the present hold time elapsed, light OFF.

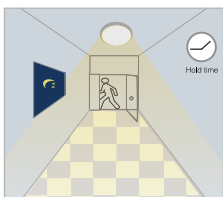
### 3. Function Demo - Dimmable Control / Corridor Function



With sufficient daylight, even when motion detected, light remains OFF.



With insufficient daylight, when motion detected, light ON.



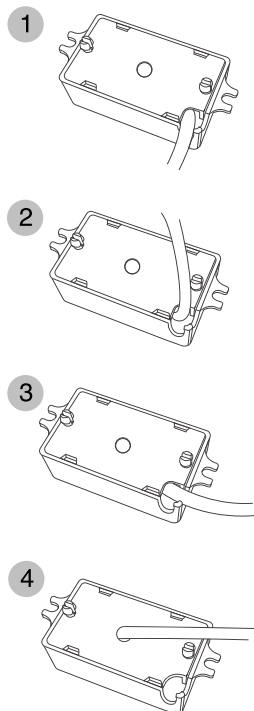
After last detection, the light will be dimmed down to the stand-by dimming level (10%, 20%, 30% or 50%) after holdtime.



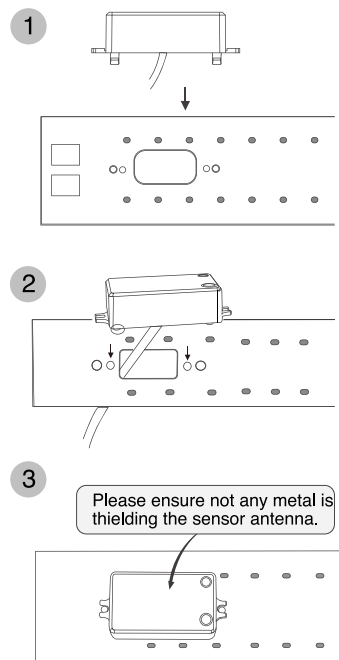
After the stand-by period, light OFF.

## INSTALLATION METHOD

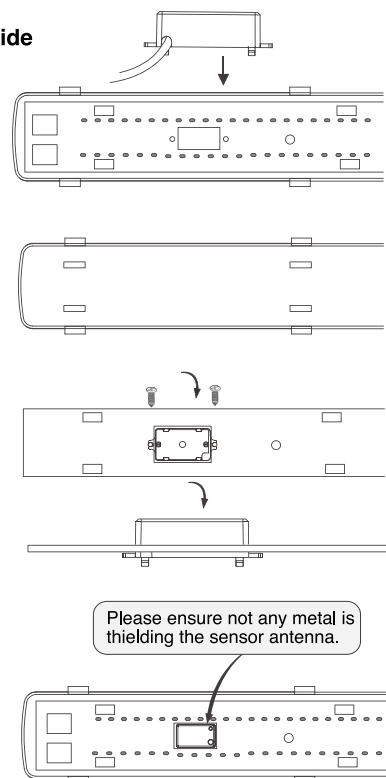
### 4 Styles of Installation



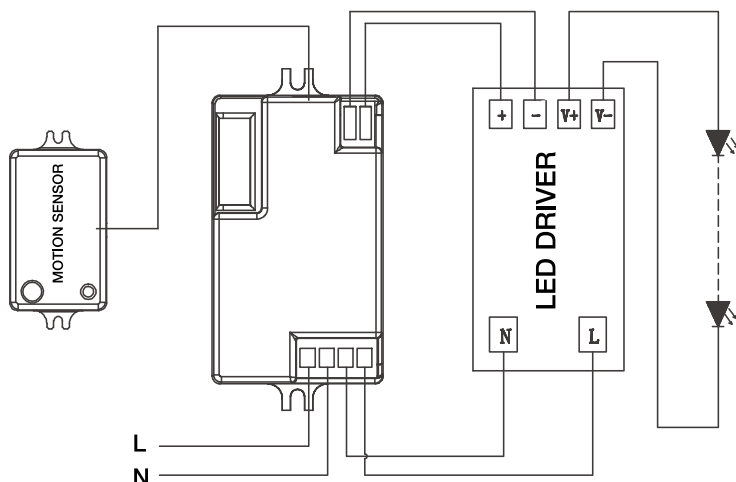
### Cable on center



### Cable on Tip Side



## WIRING DIAGRAM



## SETTINGS

### TECHNICAL DATA

Operating voltage	120~277 VAC 50/60Hz
Switching capacity	Max.3.0A@120Vac,Max.2.0A@277Vac
Stand-by power	<1W
Detection area	50%/100%
Hold time	5s/30s/1min/10min
Daylight threshold	2Lux/10Lux/50Lux/Disable
Stand-by period	0s/30s/20min/+∞
Stand-by dimming level	10%/20%/30%/50%
Microwave frequency	5.8GHz ± 75MHz
Microwave power	<0.3mW
Interfaces	6-pole pluggable clamp terminal (L,N,N,L',1-10v+,1-10v-) for 0.75- 1.5mm² cable
Mounting height	Max.6m(ceiling mounted);Max.3m(wall mounted)
Detection range	Max.ø14m(ceiling mounted);Max.10m(wall mounted)
Detection angle	30°-150°
Operating temperature	-20°C~+60°C
IP rating	IP20

Note: Motion sensor setting and dimming setting please refer to remote control HD02R/HD03R. HD02VR Wire diameter 4mm, Standard Version Cable Length 30cm (can be customized).

### SETTINGS

The settings diagram shows a red switch labeled 'ON' and 'OFF' with a 'DF' label. Below the switch is a 9-pin terminal block. The settings are as follows:

- DETECTION AREA** (Pin 1): 100% (selected) or 50%.
- HOLD-TIME** (Pin 2): 5s (selected), 30s, 1min, 10min.
- DAYLIGHT THRESHOLD** (Pin 3): Disable (selected), 50lux, 10lux, 2lux.
- STAND-BY PERIOD** (Pin 4): 0s (selected), 30s, 20min, +∞.
- STAND-BY DIMMING LEVEL** (Pin 5): 10% (selected), 20%, 30%, 50%.

**DETECTION AREA**  
In this area, movement will be detected and able to trigger the sensor.100% detection area is also known as the strong sensitivity.

**HOLD-TIME**  
The period of light keeping 100% brightness after moving objects leave the detection area.

**DAYLIGHT THRESHOLD**  
Definition of the ambient brightness; only when the ambient brightness is lower than the preset specific lux amount, the sensor will work; when it's preset as "disable", the sensor works everytime it detects motion regardless the ambient brightness.

**STAND-BY PERIOD**  
The period of light keeping low output before it's completely switched off. When it's preset as "+∞", the light always keep at low output if no movement in the detection area and doesn't turn off.

**STAND-BY DIMMING LEVEL**  
The definition of low output in the standby period.