

# INSTALLATION INSTRUCTIONS

## 4" 12V MR-16 Retrofit

### 4Inch LED Retrofit Trim Series

#### RECESSED HOUSING AND DIMMER COMPATIBILITY

\*The LED Downlight is designed to install in standard 4",recessed downlight housings.

\*Compatible with most dimmers when used with multiple LED Downlight fixtures.

\*Compatibility of housing not on this list may be determined by measurement of the housing as detailed in the attached drawing ( Figure 1)

### IMPORTANT SAFETY INFORMATION

#### Read all instructions before installation

Warning - Risk of Electric Shock. Disconnect power at fuse or circuit Breaker before installing or servicing.

Note: (1) It may be necessary to remove a socket mounting plate for adequate clearance.

(2) Each lampholder shall be installed only in its intended manner and orientation.

(3) Not all existing recessed housings that meet these requirements will be compatible with the LED Downlight. To ensure compatibility, a test installation should be conducted.

(4) Suitable for wet locations.

(5) WARNING - Risk of fire or electric shock. LED Retrofit Kit installation requires knowledge of luminaire electrical systems. If not qualified, do not attempt installation. Contact a qualified electrician.

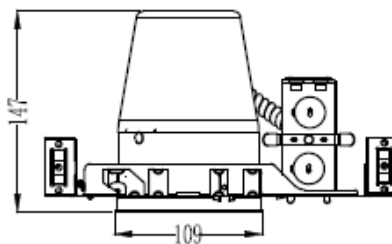
(6) WARNING - Risk of fire or electric shock. Install this kit only in the luminaires that have the construction features and dimensions shown in the photographs and/or drawings.

(7) Do not make or alter any open holes in an enclosure of wiring or electrical components during kit installation.

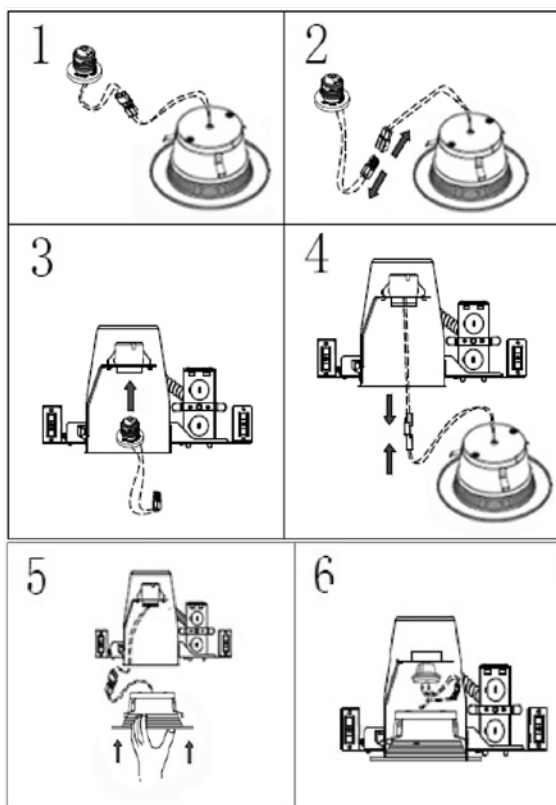
(8) WARNING - To prevent wiring damage or abrasion, do not expose wiring to edges of sheet metal or other sharp objects.

(9) THIS PRODUCT MUST BE INSTALLED IN ACCORDANCE WITH THE APPLICABLE INSTALLATION CODE BY A PERSON FAMILIAR WITH THE CONSTRUCTION AND OPERATION OF THE PRODUCT AND THE HAZARDS INVOLVED

### INSTALLATION INSTRUCTIONS



Minimum distance between edge of fixture and top of housing or other obstruction.



#### STEP 1:

Remove LED Downlight fixture from the packaging

#### STEP 2:

Make sure the **POWER IS TURNED OFF** at the source to the recessed housing(s) that you are installing the fixture(s) in.

Once power has been turned off, remove existing trim and lampholder, revealing the existing socket and split up the terminals.

#### STEP 3:

Put the lampholder into the socket and twist.

#### STEP 4:

Pull LED downlight assembly, connect the terminals between the lampholder and the Trim. Care should be taken not to damage wiring during this process.

#### STEP 5:

Slide LED Downlight with torsion spring in fully-deployed position,

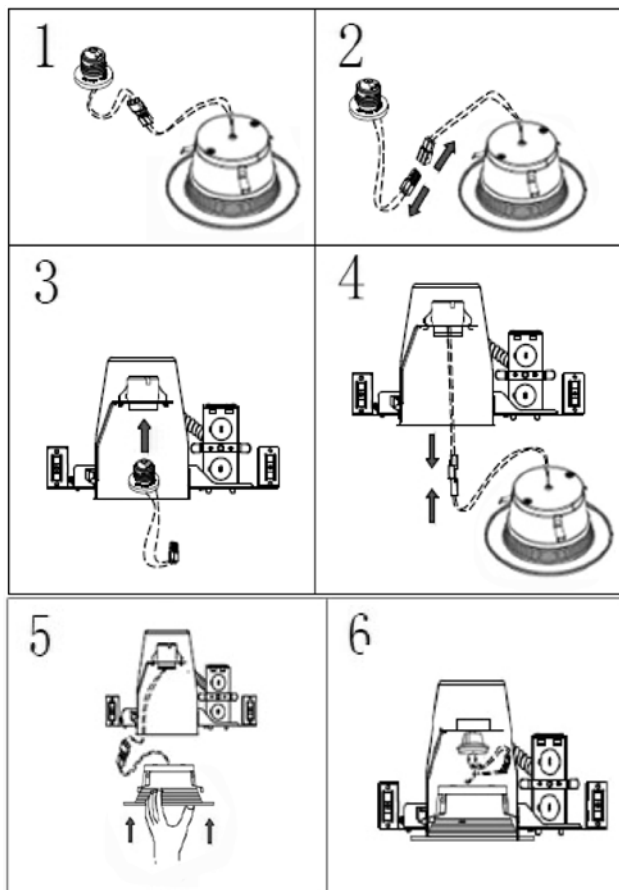
#### STEP 6:

Up into the recessed housing firmly until trim ring is flush with ceiling.

ENL12V筒灯说明书  
A4纸,单面印刷,需折页  
料号: A605-0213549-01

## GU24 INSTALLATION INSTRUCTIONS

If the existing socket is a GU24- type socket,please follow below instruction.



### STEP 1:

Remove LED Downlight fixture from the packaging

### STEP 2:

Make sure the **POWER IS TURNED OFF** at the source to the recessed housing(s) that you are installing the fixture(s) in.

Once power has been turned off, remove existing trim and lampholder, revealing the existing socket and split up the terminals.

### STEP 3:

Put the lampholder into the socket and twisting socket clockwise until locked.

### STEP 4:

Pull LED downlight assembly, connect the terminals between the lampholder and the Trim. Care should be taken not to damage wiring during this process.

### STEP 5:

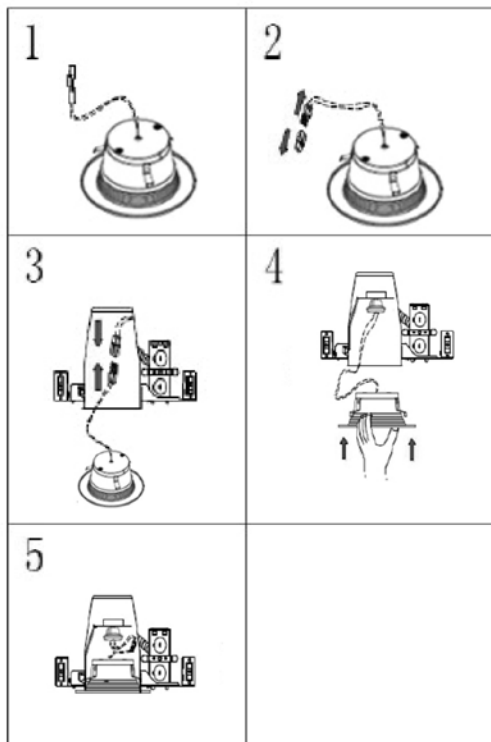
Slide LED Downlight with torsion spring in fully-deployed position,

### STEP 6:

Up into the recessed housing firmly until trim ring is flush with ceiling.

## MR-16 TWO PINS INSTALLATION INSTRUCTIONS

If the existing socket is a MR-16 type socket,please follow below instruction.



### STEP 1:

Remove LED Downlight fixture from the packaging

### STEP 2:

Make sure the **POWER IS TURNED OFF** at the source to the recessed housing(s) that you are installing the fixture(s) in. Once power has been turned off, remove existing trim and lampholder, revealing the existing socket and split up the terminals.

### STEP 3:

Pull LED downlight assembly, connect the terminals between the lampholder and the Trim. Care should be taken not to damage wiring during this process.

### STEP 4:

Slide LED Downlight with torsion spring in fully-deployed position,

### STEP 5:

Up into the recessed housing firmly until trim ring is flush with ceiling.

ENL12V筒灯说明书  
A4纸,单面印刷,需折页  
料号: A605-0213549-01