

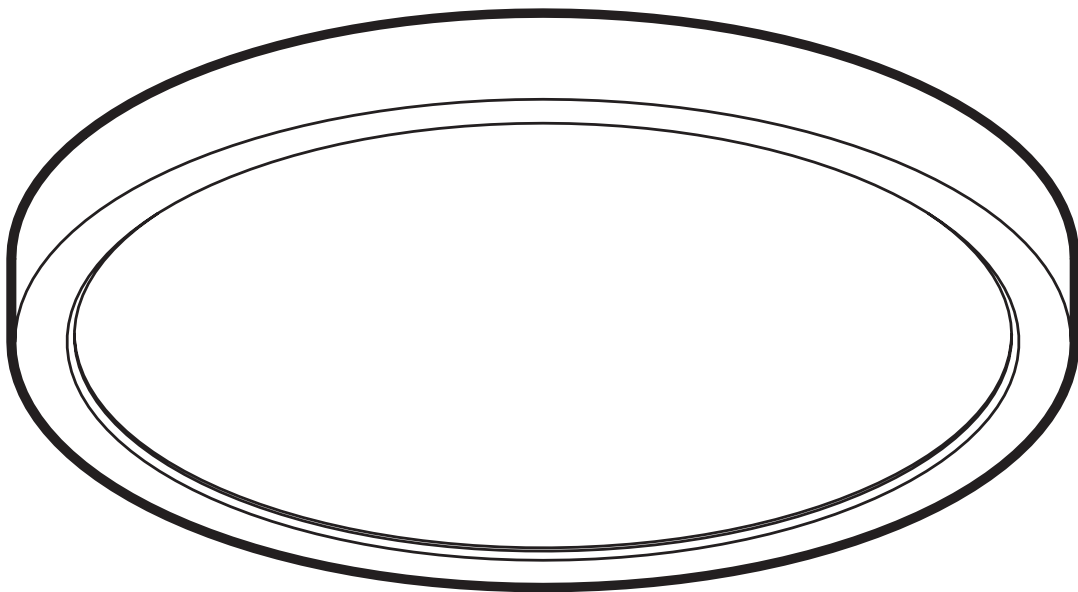
Installation Instructions for 120V Dimmable

IMPORTANT SAFETY INSTRUCTIONS

Instructions pertaining to a risk of fire, electric shock or injury to others.

WARNING

Installation must be done accordingly to local electrical codes.
Installation should be done by a certified electrician.



Integrated driver is dimmable with most regular dimmers
(low voltage electronic dimmer suggested) For best dimmability
see compatible dimmer list. Dimming range up to: 10% - 100%

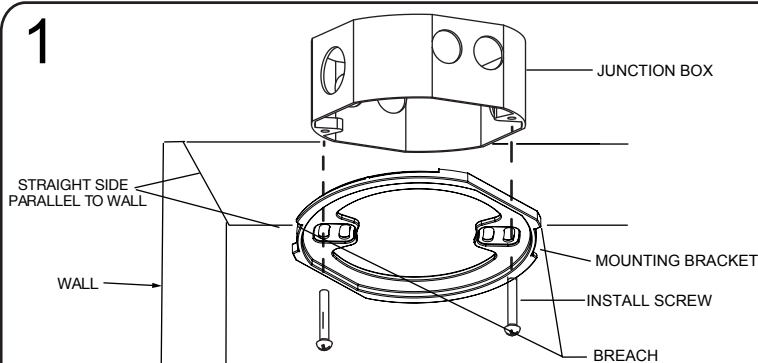
Installation Instructions for 120V Dimmable

Instructions Before Installations

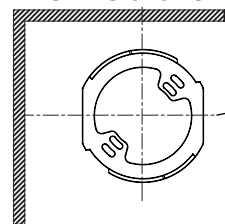
WARNING • BEFORE STARTING INSTALLATION, SHUT THE LINE FEED POWER OFF USING THE CIRCUIT BREAKER • **WARNING**

Installation Instructions

1



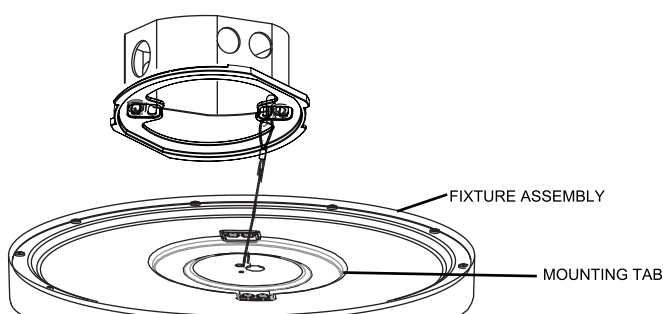
After Installation



BREACH

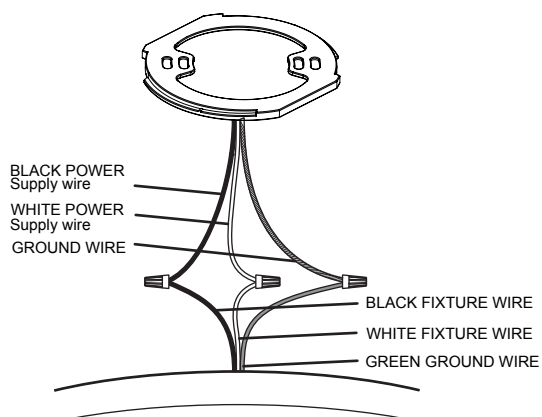
Hold mounting bracket up to junction box with flange facing down. Align breach side of the mounting bracket parallel to nearest wall. Screw mounting bracket to J-box

2



Before connecting, attach to hook side of safety cable on mounting bracket!

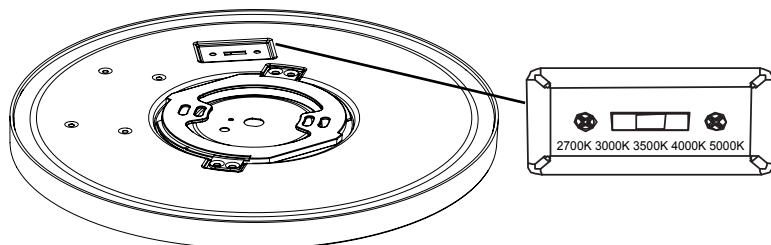
3



With Power OFF

Connect the green groundwire from the fixture to the bare copper groundwire from the junction box using a wirenut (if house wiring does not include a ground wire, consult your electrical code for approved grounding methods). Use wirenuts to connect black fixture wire to the black power supply wire and white fixture wire to the white power supply.

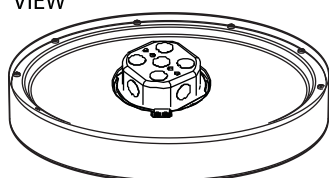
4



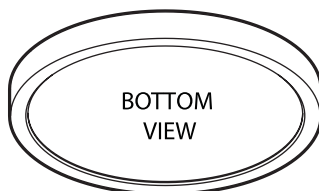
Attach provided to indents (opening) of the mounting tabs on back of the fixture with indents in the mounting bracket.

5

TOP VIEW



BOTTOM VIEW



Using sticker on the fixture (reference point for mounting tab) and on the ceiling as reference point, lift fixture up to the ceiling and rotate clockwise until fixture is secured (45° turn until it locks).