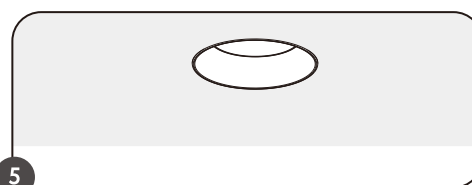
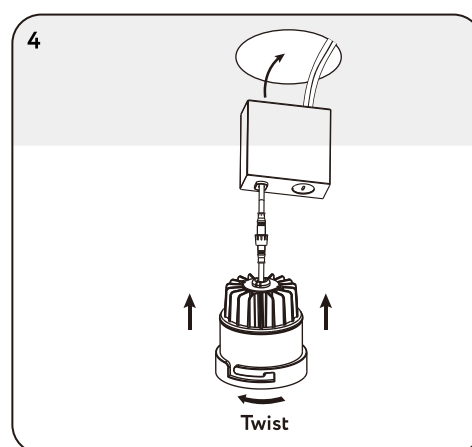
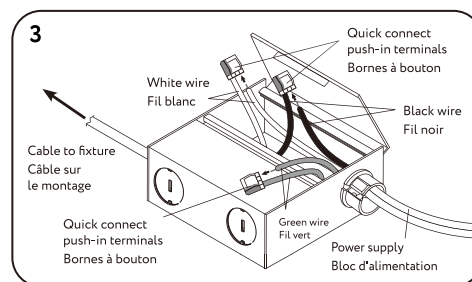
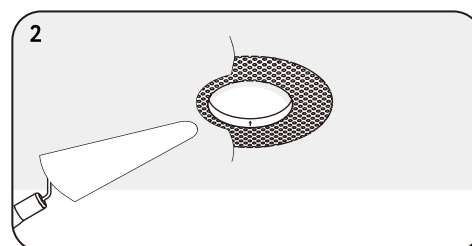
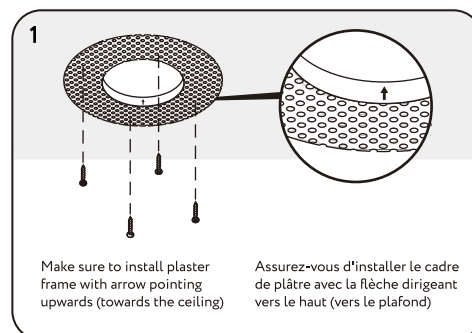


4" LED Trimless Installation Instructions

IMPORTANT Read all instructions before installing fixtures. Keep for future reference.

SAFETY For your safety, this fixture must be wired in accordance to local electrical codes and ordinances. All work should be done by a qualified electrician.

WARNING Make certain power is OFF from the electrical panel before starting installation or attempting any maintenance. Indoor installation only.



Hole Cut Size / Taille Trou Découpé	
2" Round	ø 2 3/5 (67mm)
3.5" Round	ø 3 1/4 (82mm)
3.5" Square	ø 4 3/4 (120mm)
4" Round	ø 3 7/8 (98mm)

TOOLS REQUIRED

1. Saw
2. Measuring tape
3. Electrical wiring (use type and gauge suitable for application to connect the fixtures)

PRE-INSTALLATION

1. Turn power OFF from the electrical panel before starting installation.
2. Locate a suitable position to plate the fixture and open in accordance to the cut-hole dimensions (refer to Hole Cut Table for appropriate size)
3. Run electrical wire from the switch (power supply) through the mounting hole use NMD90 Romex or BX cable.
4. Align the inside edge of the Zero Clearance plaster frame to the drywall hole and screw in place. (Fig. 1)
5. Plaster over the plaster frame, be careful not to fill past raised rim. (Fig. 2)

DRIVER WIRING

1. Open the hardwire box swing cover and remove the appropriate knockouts.
2. Insert the electrical supply cable through the knockout and secure with a cable connector.
3. Using wire nuts, connect green ground wire to green wire on box. Connect white to white wire on box. Connect black wire to black wire on box. (Fig. 3)
4. Place all wiring and connections back in to the box and close the cover.
5. Insert hardwire box through the mounting hole. (Fig. 4)

FIXTURE INSTALLATION

1. Connect the fixture to the hardwire box by inserting and twisting the male/female connectors. (Fig. 3)
2. Insert the fixture to plaster frame, secure the lamp by twisting the fixture appropriately to the plaster frame. (Fig. 4)
3. Once assembly is complete, turn on power to confirm fixture is working properly.

Compatible Dimmers

BRAND	SERIES	MODEL	LOAD	DIMMABILITY
LUTRON	ARIADNI	AYCL-153P	150W	OK
	DIVA	DV-600PR	600W	OK
	DIVA	DVCL-153P	150W	OK
	MAESTRO	MACL-153MH	600W	OK
	MAESTRO WIRELESS	MRF2-6CL	150W	OK
	ROTARY	D-600P	600W	OK
	ELECTRONIC (ELV)	NTELV-300P	600W	OK
	SKYLARK	S-600P	600W	OK
	SKYLARK CONTOUR	CT-600P	600W	OK
	SKYLARK CONTOUR	CLCL-153P	153W	OK

BRAND	SERIES	MODEL	LOAD	DIMMABILITY
LUTRON	TOGGLER	TG-600P	600W	OK
	TOGGLER	TGCL-153P	150W	OK
	CASETA	WIRELESS DIMMER	150W	OK
LEVITON	SURESLIDE	6633	600W	OK
	SURESLIDE DECORA	6674	600W	20-100%
	TRIMATRON	6602	600W	20-100%
	ILLVMATECH	IPL06	600W	OK
LEGRAND	ADORNE	ADTP703TU	700W	20-100%
	HARMONY	H703PTW	700W	OK
COOPER	ASPIRE	9540	1000W	OK
	DEVINE	DAL06P	300W	OK

