

Project: _____
 Part#: _____
 Type: _____

120V Architectural Striplight



ARC FLEX is EnVision LED Lighting, Inc. newest and highest grade 120V LED strip light yet. The maximum run length is 150 feet, however rolls are available for purchase in 100ft runs or custom factory cut sections. With a wide range of accessories available, cut every 18”s, jump, and flex the tape into numerous residential and commercial applications. Check out our accessories listed below.



Applications:

- Undercabinet & Overcabinet
- Buildings
- Trees
- Cove Lighting
- Indoor and Outdoor Rated

Product Information:

- Cuttable every 18" with 150' max run
- Suitable for wet location (not submersible) IP65
- Optional accessories (**See page 3**)
- Fully dimmable with no transformer needed
- Architectural CRI 90+
- Ribbed lens for glare reduction
- 1.5 Step BIN CCT Consistency
- 50,000 Hours of operation (L70)



1	Product	2	Voltage / Watts	3	Color	4	Length	5	Warranty
ST-2835	Architectural Striplight 120V	120V-4W	120V-4W / ft (320lm / ft)	30K 40K 50K	3000K 4000K 5000K	(Blank) CUSTOM	100Ft 100FT+	(Blank) 3YR+	3 Year (incl.) 3+ Years (Inquire with factory)

Specs and model numbers are subject to change with or without notice

FEATURES

Cuttable every 18"

Max run of 150'
Rolls available for purchase
in 100FT runs, or custom
factory sections

Fully Dimmable

No transformer needed.

Wet Location Suitable

Not submersible
IP65 Rated

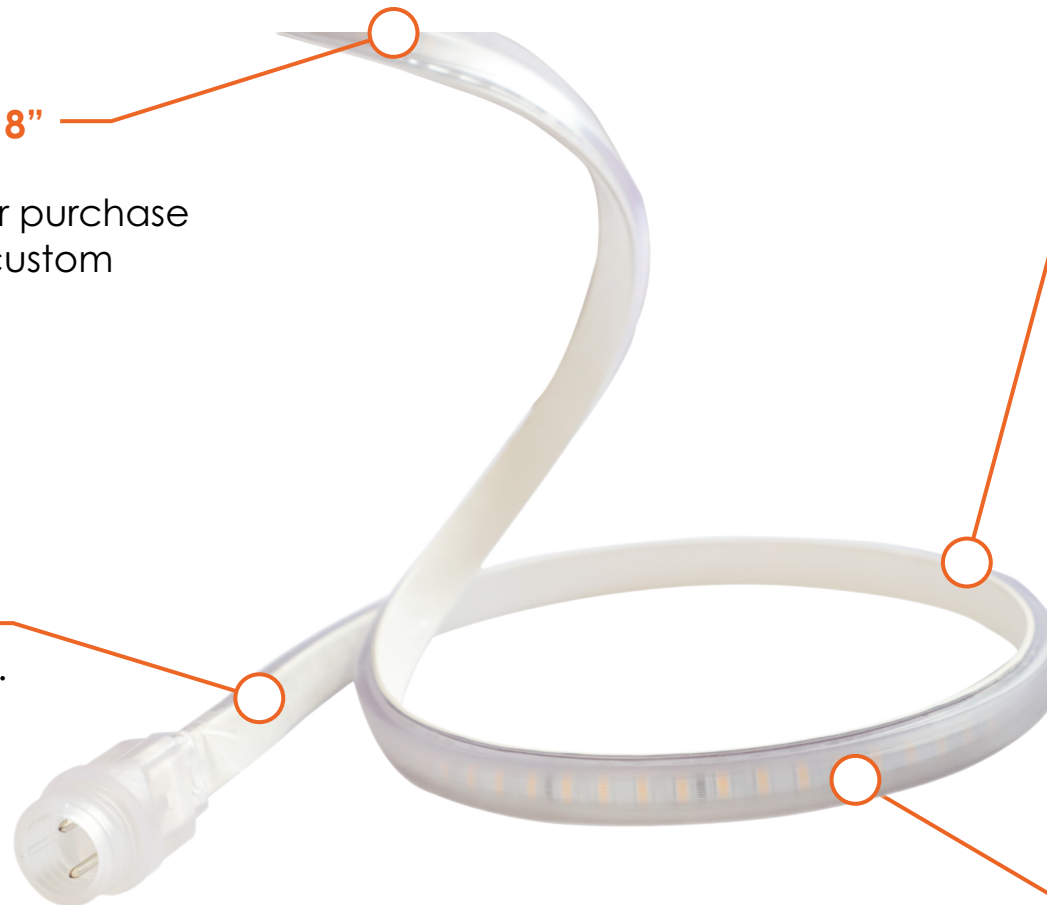
Ribbed Lens

For reduction in glare

Dimensions

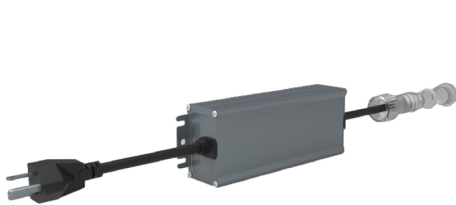
.60 W x .34 H.

**For Optional Accessories
See Page 3**



ACCESSORIES

Model #	Description
ST-POWSET-18	18" Power Cord Set (cord, coupling, end cap)
ST-POWSET-36	36" Power Cord Set (cord, coupling, end cap)
ST-POWSET-72	72" Power Cord Set (cord, coupling, end cap)
ST-JBX-POW-1200W-36"	1200W Junction Box Driver (IP65V)
ST-POW-UNV-400W-36"	400W Commercial Grade Power Cord (IP65, 100-277V, 3000V, Surge Protector, Flicker Free)
ST-JUMPER-6	6" Jumper Cable
ST-JUMPER-12	12" Jumper Cable
ST-120-WP-COUP	Waterproof Coupling
ST-120-WP-COUP-L	Waterproof Coupling L-Shaped
120V-STRAP	Strap (Plastic mount for striplight)
ST-COUP-PIN	Coupling Pin
ST-END-CAP	End Cap 120V



400W Commercial Grade Power Cord 120-277V



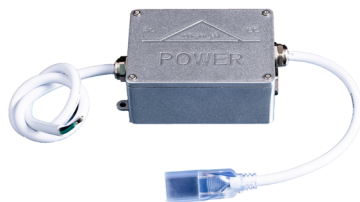
Jumper Cable



Strap



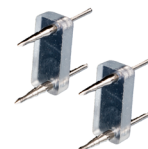
Waterproof Coupling



1200W J-Box Driver for Hardwire (IP65V)



End Cap

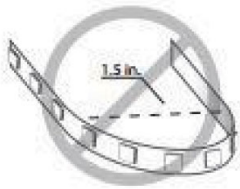


Coupling Pin

INSTALLATION

Follow instructions contained in the latest National Electrical Code (NEC)

Installation should be made by a qualified electrician with a license. Covering the striplight may cause it to overheat or melt. Do not turn the striplight on while in the spool. Do not cut, splice, or hard wire the striplight. This will void warranty and cause risk of electrical shock. Striplight shall not be submerged in liquid. The striplight and power cord may not be installed in-wall. To secure the striplight and power cord, use available straps. Do not mount with screws, nails, staples, or any like products. Excessive bending, twisting, and pressure may damage the product. Power the striplight with the power cord provided. Do not modify the power cord in any way. In outdoor environments, the power cord must be placed into a junction box and shall not be exposed to any liquid. The maximum recommended run is 100ft. Any further will shorten the life span and may cause failure in the striplight.



Do not bend LED strip light to a diameter less than 1.5 inches.



Do not fold or crease LED strip light.



Do not bend LED strip light on a horizontal plane.



Do not put excessive pressure on surface of strip light (e.g. glass/acrylic panes etc.).

Step 1: Uncoil the striplight prior to any installation

Step 2: Do not field cut the striplight. All cutting must be done in a suitable and professional environment.

The striplight is cuttable every 19 inches and breaking points are seen on the back where the motherboard leaves a gap.



Do not cut off or modify the strip light or attached AC cord that provides power to the strip light.

Power Cord Installation for Cut Striplight Sections: Insert sharp side of coupling into the wiring of the striplight. Soft side of the coupling goes into the power cord. Use an end cap at the end of each section.

Step 4: Lay out striplight in usage area and properly mount a strap on the striplight every three feet.