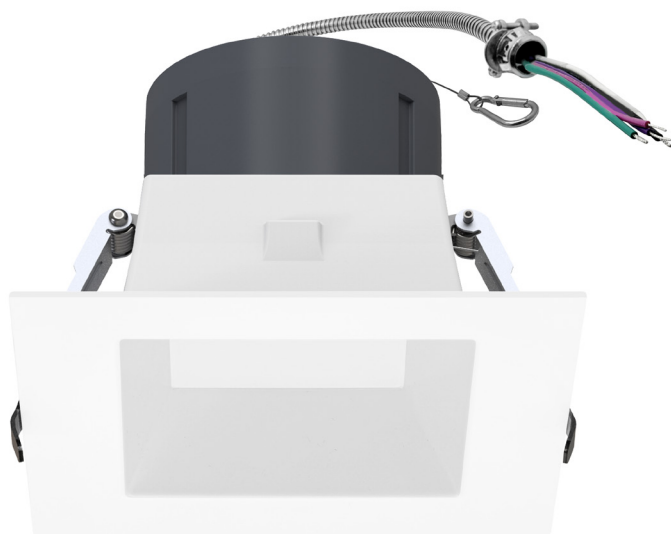


CMD-Line: Commercial Downlights

5-CCT + 3-Power Selectable



4" / 6"

Detail Specifications:

- Finish: White Smooth Standard
- Wet Location Rated
- Beam Angle: 80°
- Chip: SMD 2835, R9 >50, CRI >90
- 3 Step MacAdam Ellipses
- Operating Temperature: -40° - 114° F
- Lens: Frosted PC, non-yellowing
- Average life (L70) of 70,000 hours

Applications:

- General Recessed Lighting
- Residential & Multifamily
- Office, Hallways and Meeting Rooms
- Education, Healthcare, Retail, Hospitality
- Commercial Lighting

Product Information:

- Metal housing and trim for better heat dissipation
- 26" integral flex whip included on each fixture
- Carabiner safety clip on each fixture
- SnapTrim Canless: Spring clips with remote j-box eliminates can
- Deep reflector lens reduces glare and optimizes even beam distribution
- Select-n-Switch Technology: 5-CCT + 3-Power Selectable

Driver Options:

- Voltage: UNV: 120-277V
- TRI Mode Dimming: 0-10V, Triac, ELV down to 5%
- THD: <20% (+/-5% tolerance), PF >0.9, 50/60Hz
- Built in 2.5Kv Surge Protector
- Flicker Free

Mounting & Installation:

- Cut Out Dimensions:
 - 4": 6-3/10"
 - 6": 7-9/10"
- Optional new construction plate available
- This fixture does not fit into a recessed can
- No housing needed in remodel applications, tension clips mount into 1/2" to 1.5" thick ceiling
- Can be removed from below the ceiling for service or replacement
- Pre-wired junction box with circuit wiring built in (3 in / 3 out)

Certifications:

- ETL Listed for USA and CA
- Energy Star Certified
- CA Title 24 JA8-2022 CEC Listed
- 5 Year Limited Warranty
- FCC CFR 47, GCC Part 15, Subpart B:2017
- IC Rated: 4-3M13, 6-3M16
- Non-IC Rated: 6-3M30
- ASTM-E283 Air-Tight
- Complies with ASTM E119, CAN ULC S101

Series

- LED-CMDSQ-4-3M13-5CCT-UNV**
4" • 13/9/6W • 1,200/850/600LM • IC Rated
- LED-CMDSQ-6-3M16-5CCT-UNV**
4" • 16/12/8W • 1,500/1,100/750LM • IC Rated
- LED-CMDSQ-6-3M30-5CCT-UNV**
30/20/15W • 2,850/2,000/1,500LM • NON-IC

Emergency

- **Blank**
None
- **EMB**
Emergency Backup

Optional Accessories (Order Separately)

New Construction Plates	Emergency Backup 1 (Field Install)	Junction Box
CUNV-NC-SQI-J-JBX Universal plate w/ hanging bards + j-box	LED-EMB-8W-HV -0/10V-2P 8W Emergency Backup LED-EMB-15W-HV -0/10V-2P 15W Emergency Backup LED-EMB-25W-HV -0/10V-2P 25W Emergency Backup	JBOX-ALM Junction box with 4 1/2" knockouts
	1. Field installable. Lasts 90 minute	

Specs and model numbers are subject to change with or without notice

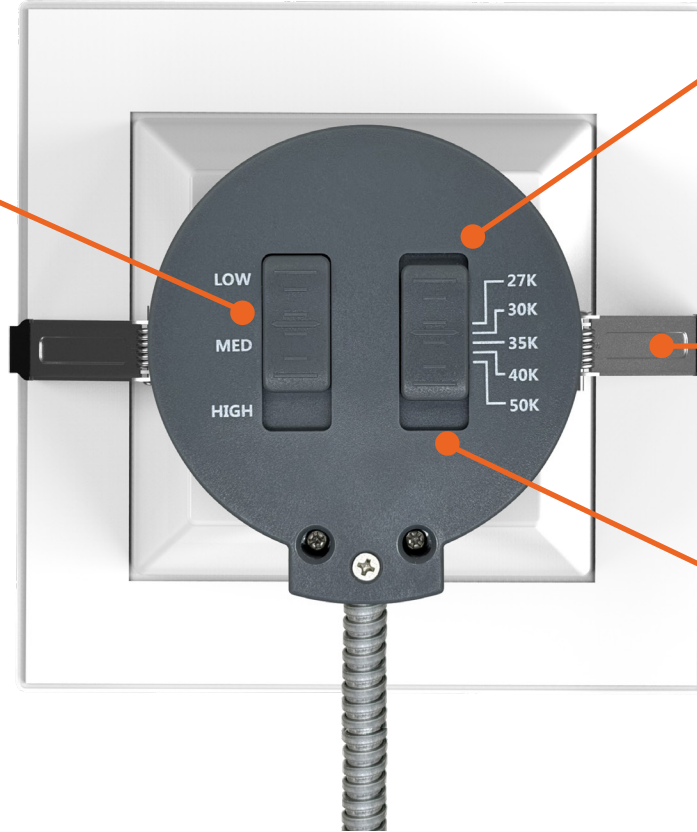
FEATURES



Selectable Wattage
Change Power wattage



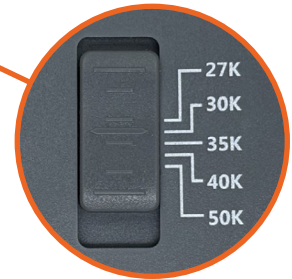
Carabiner Safety Clip



Power Box

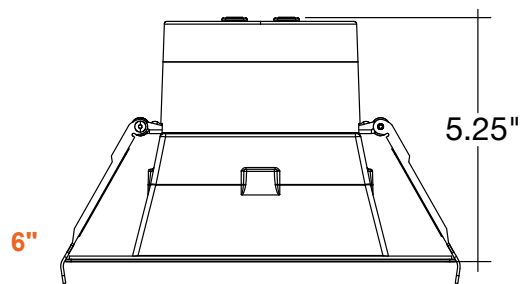
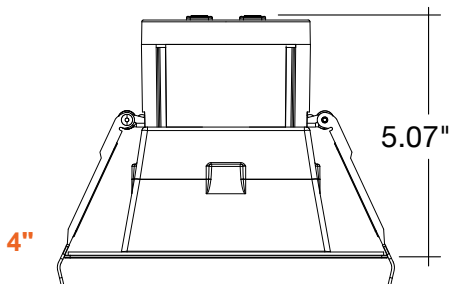
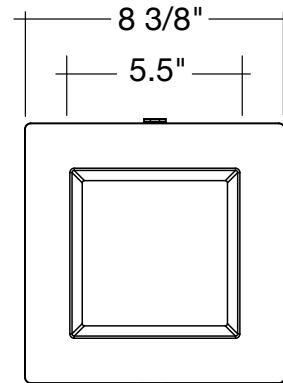
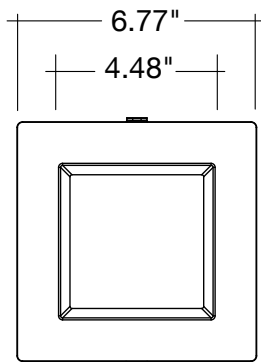
- PC Material
- Internal Flicker Free Driver
- Tri-Mode: 0-10V, ELV, Triac

Spring Installation
Can be installed in the ceiling directly without J-Box or can



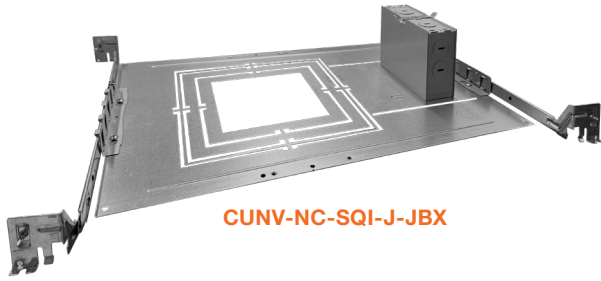
5-CCT Selectable
Change color temp between 27/30/35/40/50K

DIMENSIONS



ACCESSORIES

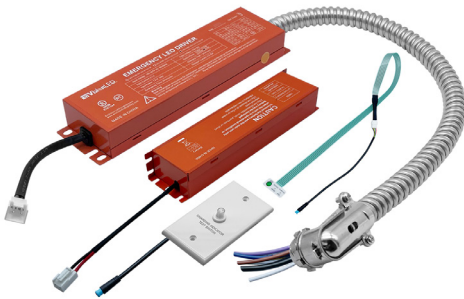
Model	Voltage	Watts	Lumens	Color	CRI
LED-CMDSQ-4-3M13-5CCT-UNV	120-277V	13/9/6w	1,200/850/600	27/30/35/40/50k	>90
LED-CMDSQ-6-3M16-5CCT-UNV	120-277V	16/12/8w	1,500/1,100/750	27/30/35/40/50k	>90
LED-CMDSQ-6-3M30-5CCT-UNV	120-277V	30/20/15w	2,850/2,000/1,500	27/30/35/40/50k	>90



CUNV-NC-SQI-J-JBX

NEW CONSTRUCTION PLATES

Accessory Model	Description
CUNV-NC-SQI-J-JBX	Universal plate w/ hanging bars + j-box



LED-EMB-8W-HV-0/10V-2P
LED-EMB-15W-HV-0/10V-2P
LED-EMB-25W-HV-0/10V-2P

EMERGENCY BACKUP

Accessory Model	Description
LED-EMB-8W-HV-0/10V-2P	8W Emergency Backup
LED-EMB-15W-HV-0/10V-2P	15W Emergency Backup
LED-EMB-25W-HV-0/10V-2P	25W Emergency Backup



JBOX-ALM

JUNCTION BOX

Accessory Model	Description
JBOX-ALM	Junction box with 4 1/2" knockouts