

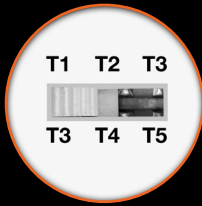
**EnVisionLED™**

**5-Power, 3-CCT, 3-Optic Selectable  
45 SKU's-in-One!**





**45 SKU's In One Fixture!:** Select your optics, power/wattage, & your CCT with a switch



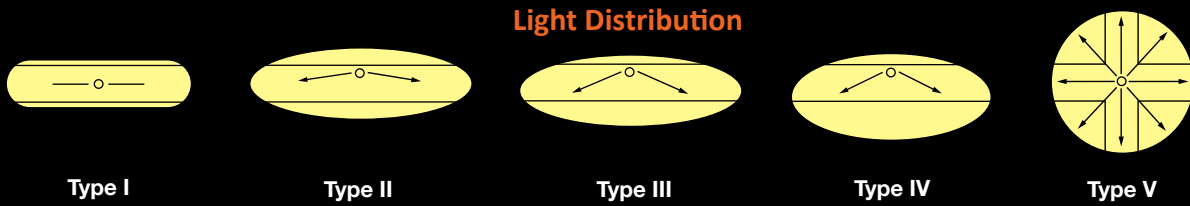
**Beam Angle Selectable**  
(T3, T4, T5 Standard)



**3-CCT & 5-Power Selectable**



**Beam Angle Optic-Selectable:** Type III, IV, V Selectable with a switch. Type I, II, III lens option available.



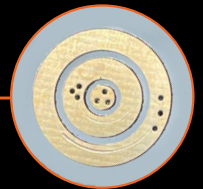
**Sensor:** Control ready receptacle built into each fixture

- Standard Sensors: PIR, Microwave, Daylight
- **SILVAIR** Bluetooth Mesh
- **EnVisionLS** Bluetooth



**S-TWC-MW-1**  
TWC-DL

**S-TWC-PIR-1**  
S-TWC-PIR-BT  
S-TWC-PIR-SL



**Twist-C Control Receptacle**



**Power Selectable:** 5-Power Selectable offer a powerful combination of efficiency and flexibility

5P150	
WATT	LUMENS
50	7,500
75	11,250
100	15,000
125	18,750
150	22,500

5P300	
WATT	LUMENS
180	27,000
210	31,500
240	36,000
270	40,500
300	45,000

5P430	
WATT	LUMENS
310	46,500
340	51,000
370	55,500
400	60,000
430	64,500



**Toolless Access:** This makes servicing, troubleshooting, or replacing the driver much faster and easier, saving time and labor costs.





# Applications

## Fields



## Tennis/Pickleball



## Parking Lot



# Available in 4 Finishes!



Bronze



Black

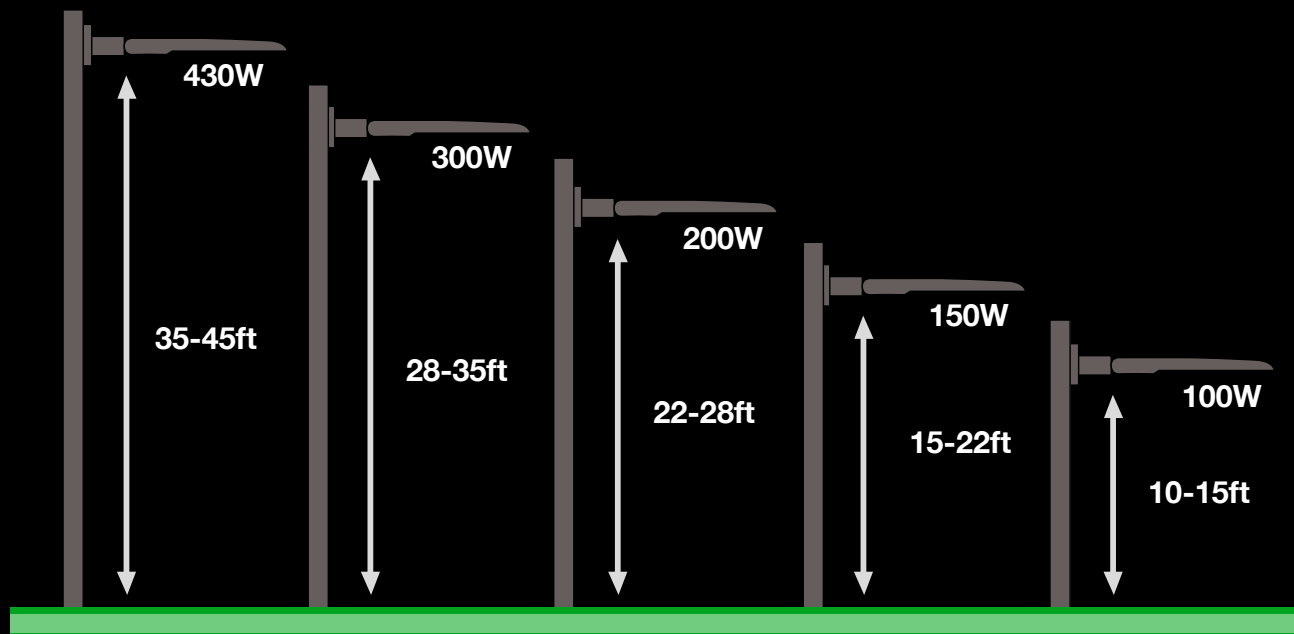


White



Gray

## Recommended Install Heights



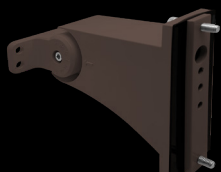
# Accessories

## Brackets



**ARL3-TR**

- Flood light bracket
- Ideal use on a wall
- Can be used for shoebox
- Adjustable design to angle area light luminaire



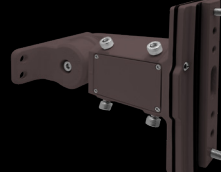
**ARL3-SA**

- For use with round or square poles
- Adjustable design to angle area light luminaire



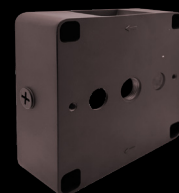
**ARL3-SF**

- For use with round or square poles
- Adjustable design to angle area light luminaire
- Fits 2 3/8" tenon



**ARL3-SFA**

- Flood light bracket
- For use with round or square poles
- Can be used for shoebox
- Adjustable design to angle area light luminaire

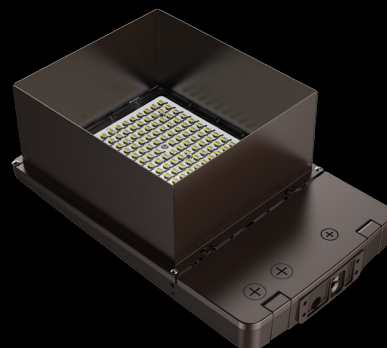
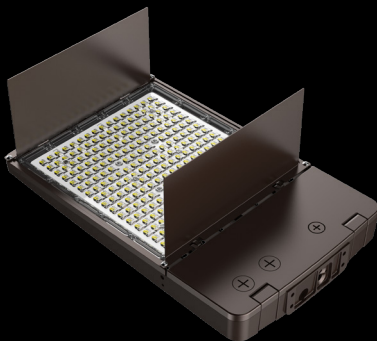


**ARL3-WM**

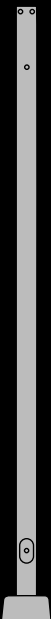
- Attach to SA or SFA arm
- Does not attach to the body of the fixture directly

## Shields

Essential for lights mounted near property lines or buildings to prevent light trespass (unwanted light spilling into windows or yards). Often called "house-side shields" when used to protect residential areas.



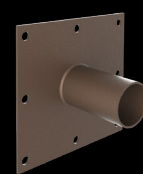
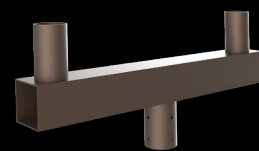
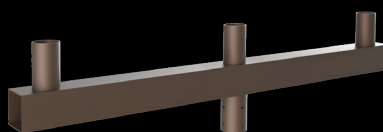
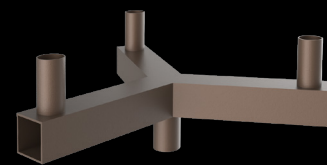
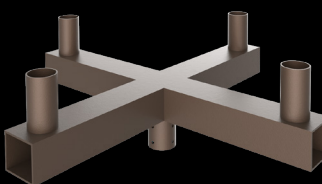
## Poles Round and Square Available



**Straight**



**Round**



## Tenon Mounts Multiple Options Available



**[envisionledlighting.com](http://envisionledlighting.com)**

**EnVision LED Lighting**

P- 323-604-0066 M-F, 5am to 5pm PST

**Information**

[cs@envisionledlighting.com](mailto:cs@envisionledlighting.com)

**Orders**

[orders@envisionledlighting.com](mailto:orders@envisionledlighting.com)

---

View Latest Catalog



envisionled



envisionled



envision-led