



**Save time and drive down
your labor costs today with our
industry changing linkable strip
fixtures. Now more than ever,
time = money**





EZ-Linking: No wiring needed to link fixtures together. Save on labor with our plug & play design.



Sensor: Save money on your next project. One sensor will activate the whole row. Place the sensor in any order.



Emergency?: We have you covered. Our 6-wire & 6-pin solution allows for linking emergency fixtures without running additional wiring.



Seamless
Linkable
Connector



Highly Efficient: Enjoy an industry lead 150lm/w on our linear strips. In orders to maximize the linkable quantity, we decided to use highly efficient chips while keeping the wattage low.



Power Selectable: Link up to 224 feet in one run on the lowest power setting.

LINKABLE CHART

4FT			8FT		
WATT	120V	277V	WATT	120V	277V
20W	25	56	40W	12	28
30W	16	37	60W	8	18
40W	12	28	80W	6	14

Applications

Retail Stores



Garages



Assembly Lines

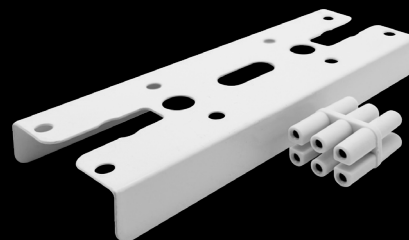


Accessories

Linking Bracket & Coupling

L6-BK-6P

6-pin coupling for end-to-end connection and bracket for securing the fixtures together. Can be used in surface mount and suspended applications



Power Cords

L6-5FT-PC-3P: 5' 3-prong power cords for plug and play

L6-5FT-PC-LE: 5' 5-wire hardwire power cord

L6-JBX: J-box power port to run your wire to the end of the fixture. Fixture does have ½" KO on the backside.



L6-5FT-PC-3P



L6-5FT-PC-LE



L6-JBX

Jumper Cables

L6-0.5FT-JUMPER & L6-2FT-JUMPER:

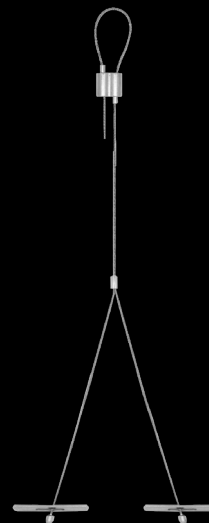
6" and 2' jumper cables to link fixtures together



Suspension Kits

SK-10FT-Y-LC-PD & SK-20FT-Y-LC-PD:

10' & 20' Y-shape suspension kits to suspend each fixture. Adjust the length from the top or bottom.



SK-10FT-Y-LC-PD
SK-20FT-Y-LC-PD



envisionledlighting.com

EnVision LED Lighting

P- 323-604-0066 M-F, 5am to 5pm PST

Information

cs@envisionledlighting.com

Orders

orders@envisionledlighting.com

View Latest Catalog

[**CLICK HERE**](#)



envisionled



envisionled



envision-led