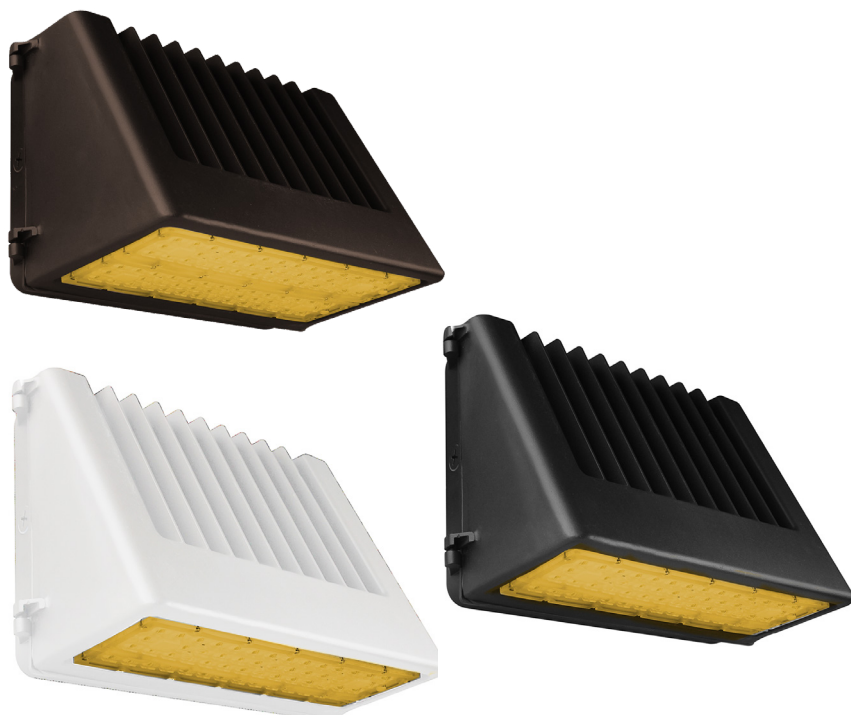


# FC-Line: Full Cut Off Wall Packs

3-CCT + 5-Power Selectable  
2200K

Wall Packs



### Detail Specifications:

- Finish: Bronze, Black, White, Custom finishes available
- IP Rating: Wet Location IP65
- CCT: 2200k
- Impact Rating: IK08
- Beam Angle: Type III (Standard)
- Chip: SMD 2835
- BUG: B3-U0-G2
- Operating Temperature: -40° - 122° F
- Lens: Clear acrylic with optics
- Average life (L70) of 70,000 hours

### Applications:

- Walkways & Pathways
- Parking Lots
- Hospitality, Multi-Family
- Outdoor Corridors
- Residential, Commercial and Industrial

### Product Information:

- Sturdy die-cast aluminum housing finished with corrosion free powder coat
- Full Cut-Off Dark Sky Compliant
- Photocell is included with an easy quick disconnect
- Instant-On to full brightness
- Select-n-Switch Technology: 5-Power Selectable
- Control Options:
  - Standard Sensors
  - SILVAIR Bluetooth Mesh
  - ENVISIONLS Bluetooth
  - [Click Here](#) for More Information

### Driver Options:

- UNV: 120-277V 0-10V Dimmable
- HV: 277-480V 0-10V Dimmable
- Built in 6Kv Surge Protector
- THD: <20% (+/-5% tolerance), PF >0.9, 50/60Hz

### Mounting & Installation:

- Five 1/2" knockouts: 1 one each side for convenient installation

### Certifications:

- UL Listed for USA and CA
- DLC Premium Listed
  - 5P80: PLK6KOZFX70
  - 5P150: PLBQM8B8ISJS
- ROHS Compliant
- Approved for CA T24
- 5 Year Limited Warranty
- FCC CFR 47, GCC Part 15, Subpart B:2017
- In compliance with Hawai'i County Code (HCC 14-9) and Maui County Code (Ord No.5434) for preserving dark skies
- <2% Blue Light Content

WATT	LUMENS
16	2,320
30	4,350
32	4,640
48	6,960
60	8,700
64	9,280
80	11,600
90	13,050
120	17,400
150	21,750

Series	Finish <sup>1</sup>	Voltage	Photocell	Sensor <sup>2</sup>	Emergency	Surge Protector
<b>LED-WPFC-5P80-22K</b> 16/32/48/64/80W • 2200K	<b>BZ</b> Bronze	<b>(blank)</b> 120-277V	<b>PC</b> Photocell is included. Easy quick disconnect.	<b>(Blank)</b> No Sensor	<b>(Blank)</b> No Emergency	<b>(Blank)</b> 6KV
<b>LED-WPFC-5P150-22K</b> 30/60/90/120/150W • 2200K	<b>BL</b> Black	<b>HV</b> 277-480V	<b>PC-3/4-3PIN-LV</b>	<b>BMS</b> Bi-Level Motion + Daylight Sensor Remote Required: (S-LINE-R)	<b>EMB</b> Emergency Backup	<b>20KV</b> Bulit-In Surge Protector
	<b>WH</b> White			<b>BMS-BT</b> PIR ENVISIONLS Bluetooth Control	<b>CEMB</b> 90 Minute Emergency	
	<b>GRY<sup>1</sup></b> Gray			<b>BMS-SL</b> PIR SILVAIR Bluetooth Mesh	Backup Cold Weather 4-120F	
	<b>CS<sup>1</sup></b> Custom Color					

1. Standard quickship models shows on page 3.

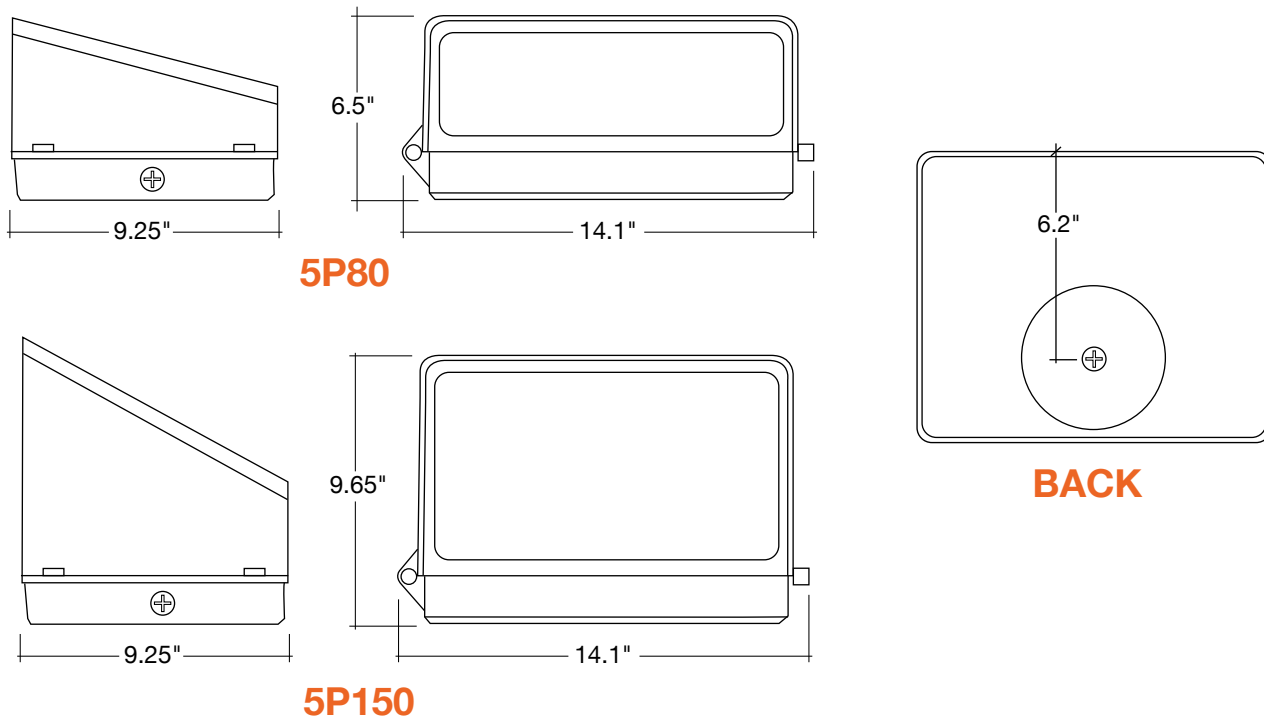
2. Sensors require remote for programming

Specs and model numbers are subject to change with or without notice

**FEATURES**



**DIMENSIONS**



# FC-Line: Full Cut Off Wall Packs

5-Power Selectable  
2200K

## STANDARD QUICK SHIP MODELS









Model	Voltage	Watts	Lumens	Color	CRI
LED-WPFC-5P80-22K-BZ-PC	120-277V	80/64/48/32/16W	145 lm/w	2200K	>80
LED-WPFC-5P80-22K-BL-PC	120-277V	80/64/48/32/16W	145 lm/w	2200K	>80
LED-WPFC-5P80-22K-WH-PC	120-277V	80/64/48/32/16W	145 lm/w	2200K	>80
LED-WPFC-5P80-22K-BZ-HV-PC	277-480V	80/64/48/32/16W	145 lm/w	2200K	>80
LED-WPFC-5P150-22K-BZ-PC	120-277V	150/120/90/60/30W	145 lm/w	2200K	>80
LED-WPFC-5P150-22K-BL-PC	120-277V	150/120/90/60/30W	145 lm/w	2200K	>80
LED-WPFC-5P150-22K-WH-PC	120-277V	150/120/90/60/30W	145 lm/w	2200K	>80

## SENSORS

Pre-Installed Accessory Model	Description
Add '-BMS' to model #	S-BMS-EXT-1: Bi level motion + daylight sensor
Add '-BMS-BT' to model #	S-BMS-EXT-1-BT: Bi level motion + daylight sensor W/ bluetooth control (EnvisionNLS App)
Add: -BMS-SIL to Model #	SILVAIR Enable Bluetooth Control: PIR/Daylight/Zoning/Monitoring

# EnVisionLED™ Control Options

EnVision LED offers 3 control systems compatible with our LED Fixtures for projects of all sizes and budgets.

	Basic Controls	EnVisionLS 	EnVisionLED™ X SILVAIR 
<b>Description</b>	Standard Plug In Sensors	Basic Bluetooth Wireless Control	Advanced Bluetooth Wireless Control
<b>Recommended Quantity</b> (but not limited to)	N/A	>40-50 Nodes	>50 Nodes
<b>Maximum Zone Quantity</b>	N/A	100	3,000
<b>Commissioning Tool</b>	Remote Only	  ENVISIONLS App 	  SILVAIR App 
<b>Commissioning Process</b>	Individually Set via Remote	Wireless Must be done on site	Wireless- Initial linking must be done on site. Commissioning can be done via desktop remotely.
<b>Floor Plan Upload</b>	N/A	N/A	Yes Add a floor plan and mark luminaires & zones via desktop
<b>Gateway</b>	N/A	N/A	Required only for energy monitoring, advanced scheduling, automated demand response.
<b>Individual Luminaire Control</b>	Yes	Yes	Yes
<b>Luminaire Grouping Zoning</b>	N/A	Yes	Yes
<b>High End Power Low End Power</b>	Yes but limited (View Remote)	Yes	Yes
<b>Cost</b>	\$	\$\$	\$\$\$
<b>DLC NLC Listed</b>	N/A	Yes	Yes
<b>Energy Monitoring &amp; Data Reporting</b>	N/A	N/A	Monitor energy usage per individual zone & retrofit cost savings calculation + detailed reporting



# Compatible Products:

EnVision offers a variety of nodes, sensors, & gateways that are controlled via remote, ENVISIONLS Bluetooth Mesh & SILVAIR Bluetooth Mesh on all of our 0-10V dimmable fixtures.



## Individual Fixture Controls: PIR Sensor, Bi-Level Dimming, Daylight

Basic Note: **-1** • ENVISIONLS Models Note: **-BT** • SILVAIR Models Note: **-SL**

	MODEL #	DESIGN	RECOMMENDED FIXTURE	FEATURES
	<b>S-TWC-PIR-1</b> <b>S-TWC-PIR-BT</b> <b>S-TWC-PIR-SL</b>	Twist-C Control Sensor	Sensor Ready Fixtures: Area Lights, Canopies, Flood Lights, High Bays	All models are equipped with PIR occupancy sensing, high & low end bi-level dimming, & daylight sensing.
	<b>S-TWC-90 + S-TWC-PIR-1</b> <b>S-TWC-90 + S-TWC-PIR-BT</b> <b>S-TWC-90 + S-TWC-PIR-SL</b>	Twist-C Control Sensor + 90 Degree Arm	Cylinders, Strips, Wall Packs	
	<b>S-AUD-PIR-1</b> <b>S-AUD-PIR-BT</b> <b>S-AUD-PIR-SL</b>	2.5m Audio Jack	Panels & Troffers	
	<b>S-SN-PIR-1</b> <b>S-SN-PIR-BT</b> <b>S-SN-PIR-SL</b>	Snap In Sensor	Troffers & Wraps	

## Group Controls ENVISIONLS Models Note : **-BT** • SILVAIR Models Note: **-SL**

	MODEL #	DESIGN	VOLTAGE	FEATURES	RECOMMENDED FEATURES
	<b>S-CM-PIR-LV-BT</b> <b>S-CM-PIR-LV-SL</b>	Ceiling Mounted PIR Sensor	12-24V	PIR Sensor, Bi-Level Dimming, Daylight, 360° detection, 12' Max Mounting Height	Connects to 0-10V dimmable fixtures
	<b>S-WM-PIR-CUNV-BT</b> <b>S-WM-PIR-CUNV-SL</b>	Wall Mounted PIR Occupancy Sensor, Bi-Level Dimming, Daylight	120-277V	On/Off PIR occupancy sensor, 180° detection, 30' detection @ 4' Mounting Height	Connects to LED fixtures
	<b>S-WS-120V-USB-SL</b>		120V	Dimming Wall Socket, Two Sockets	Floor Lamps, Other Lamps

## Gateway (Silvair Only) 4.5–5.5 V DC, 2A Power over Ethernet 36–57 V DC

	MODEL #	DESIGN	VOLTAGE	FEATURES	RECOMMENDED FEATURES
	<b>SGW-102</b>	Wall or Ceiling Mounted	POE	Advanced Energy Monitoring Control	Connects to Silvair Controls. Gateway is not required.