

# ORCHESTRA WELLINGTON

## Flute and piccolo excerpts

Extract 1 Beethoven, Leonore No 3

Extract 2 Mendelssohn, Scherzo from A Midsummers  
Nights Dream

Extract 3 Ravel, Mother Goose, 2<sup>nd</sup> Flute

Extract 4 Debussy, Prelude a l'apres-midi d'un faune

Extract 5 Stravinsky, Petrushka

### Piccolo

Extract 6 Vivaldi, Concerto in C, Largo

Extract 7 Rossini, Semiramide

Extract 8 Ravel, Mother Goose

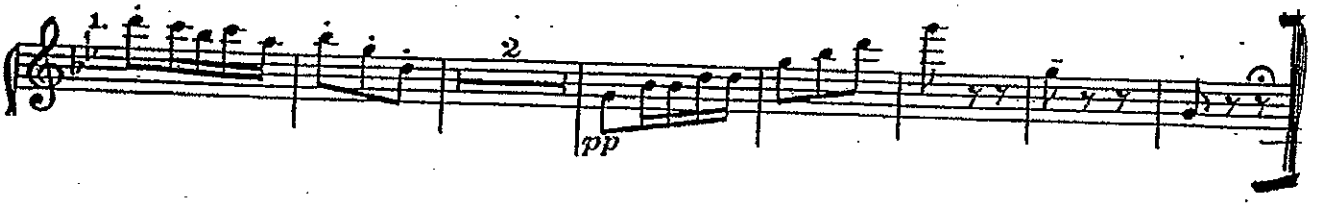
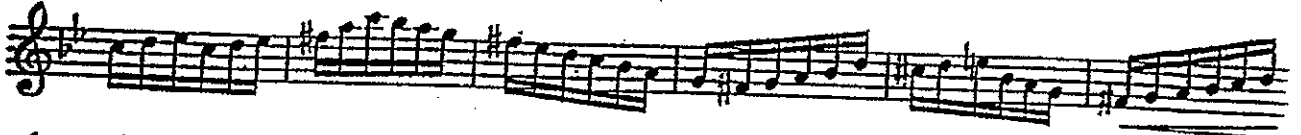
Extract 9 Beethoven, Symphony No 9

Beethoven  
Leonore No 3

*Solo*  
*cresc.* *fp*  
*pp*

The image shows a page of musical notation for Beethoven's 'Leonore No. 3'. It consists of five staves of music written in treble clef. The first staff begins with a large bracket and includes the instruction 'Solo' and 'cresc.' followed by a 'fp' (fortissimo) marking. The second and third staves contain dense, rapid sixteenth-note passages. The fourth staff continues with similar rhythmic intensity. The fifth and final staff features a series of repeated notes with slurs, marked 'pp' (pianissimo), and concludes with a large closing bracket.

Mendelssohn  
Scherzo from A Midsummers Nights Dream



SUITE  
MA MÈRE L' OYE  
Five Pieces for Children

Maurice Ravel  
Edited by Nancy Bradburd

1<sup>re</sup> GRANDE FLÛTE  
2<sup>o</sup> GRANDE FLÛTE et PETITE FLÛTE  
I. Pavane de la Belle au bois dormant

♩ = 54)

**Lent**

1<sup>re</sup> Gde FLÛTE

2<sup>e</sup> Gde FLÛTE

**SOLO**

*pp*

*pp* *expressif*

**1** **SOLO**

*p*

**2**

*p*

**3**

**Rall.**

# Prélude à l'après-midi d'un faune

CLAUDE DEBUS  
(1862-1918)

**Très modéré**  
1<sup>o</sup> SOLO

*p* doux et expressif

COR

1<sup>o</sup> 1<sup>o</sup> FL. SOLO

*p*

2

2<sup>o</sup> 1<sup>o</sup> SOLO

*p* ere - sen - do *f* 1 *p* léger et expressif

1<sup>o</sup> 2<sup>o</sup> 3

STRAVINSKY: PETRUSHKA

[58] Lento,  $\text{♩} = 50$  [59]  $\text{♩} = \text{♩}$

4 2 1

1st Vln. >

[60] Solo (Cadenza) Poco più mosso,  $\text{♩} = 60$

*p*

5

*poco*

[61] *a tempo*, *più p*

*p*

Vivaldi  
Piccolo Concerto in C  
2 Movement

Piccolo - No Repeats

Largo  
Solo  
*dolce cantabile*

10

11

12

Rossini — Semiramide Overture

Piccolo

292 *fp* *fp* *f* *ff* *ff* *f*

299 *fp* *fp*

304 *fp* *fp* *f* *ff* *ff* *f*

312 T 18 *p*

331

336 U 9 *f*

349 7 *f*

361 *ff*

367 *ff*

372

376<sup>II</sup>

380 *fp cresc.*

385 *ff*

Detailed description: This is a page of musical notation for the Piccolo part of Rossini's Semiramide Overture. The page contains ten staves of music, numbered 292 to 385. The key signature is one sharp (F#) and the time signature is 2/4. The notation includes various rhythmic values such as eighth and sixteenth notes, often beamed together in groups. There are several dynamic markings: *fp* (fortissimo piano), *f* (forte), *ff* (fortissimo), and *fp cresc.* (fortissimo crescendo). There are also articulation marks like accents and slurs. A repeat sign with first and second endings is visible between measures 312 and 331. A section marked 'U' (ritardando) is present between measures 336 and 349. The score concludes with a final measure at 385.



# Ma Mère L'Oye

Ravel

FLÛTES

3

## III. Laideronnette, Impératrice des Pagodes

124

Mouv<sup>t</sup> de Marche

G<sup>de</sup> FLÛTE

P<sup>te</sup> FLÛTE

BON

1 2 3 4 5

G<sup>de</sup> FL.

pp

SOLC

1

mf p

2

3

ff

pp

4

ff

pp

ff

3

6

Finale  
Beethoven — Symphony No. 9

2  
Flauto piccolo

343

355 *sempre pp*

365 *pp*

375 *pp* *poco cresc.*

387

397 *poco f*

407 *piu f*

416 *f piu f ff*

427 *ff* 61 L 50 M 51

505 *Andante maestoso*  $\text{♩} = 72$  14 N 16 *Adagio ma non troppo, ma divoto*  $\text{♩} = 60$  24 Ottini

533 *Allegro energico, sempre ben marcato*  $\text{♩} = 84$  14 O 22 P 16 Q 21 R 32 Archi

763 *Allegro ma non tanto*  $\text{♩} = 120$  30 S 15 *Poco Adagio* Legni 2 *Tempo I* Ob. I 16

832 *Poco Adagio* 1 Clar. I 5 Clar. I 2 *Poco Allegro, stringendo il tempo, sempre più Allegro* Archi

The image shows a page of a musical score for the finale of Beethoven's Symphony No. 9. The top section is for the Flauto piccolo, starting at measure 343. It features a series of sixteenth-note passages with various dynamics and articulations. Handwritten annotations include '♩ = 96' and '122' on the left, and letters H, I, J, K, L, M, N, O, P, Q, R, S in boxes marking specific measures. Below the Flauto piccolo part are staves for other instruments: Viola (measures 505-533), Viol. II (measures 533-763), Viol. I (measures 763-832), Clar. I (measures 832-860), and Archi (measures 832-860). Each section includes tempo markings and time signatures.