

Remote Desktop Services

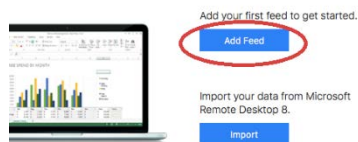
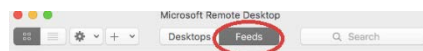
remote.boxhill.edu.au

Apple Mac

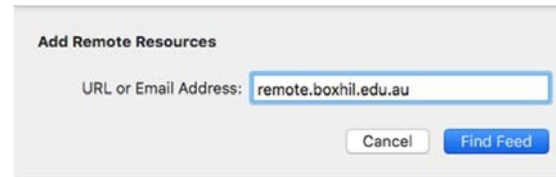
1. Search for Microsoft Remote Desktop 10 in the app store and install it.



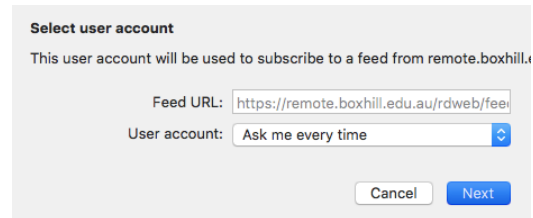
2. Open Microsoft Remote Desktop, select **Feeds** Click the **Add Feed** button.



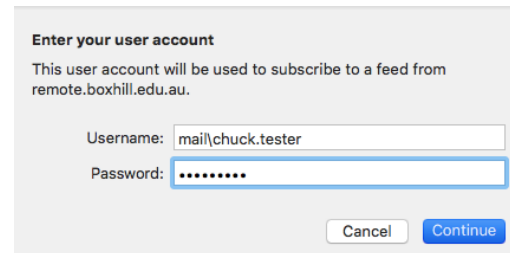
3. Enter the URL **remote.boxhill.edu.au** and Find Feed



4. Set user account to **Ask me every time** and click **Next**

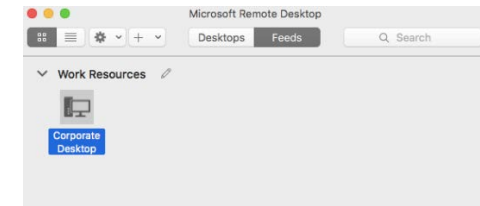


5. Add a User Account.
Enter your user account/password in the format: **MAIL\username** and click **Continue**

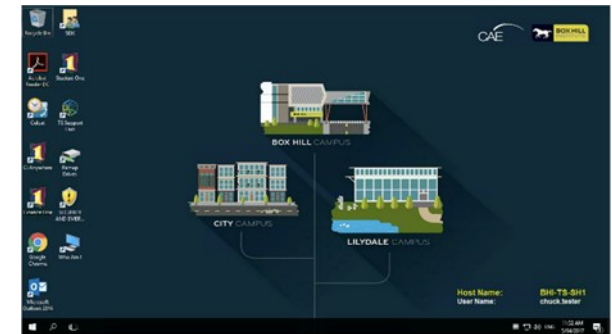


6. Use your credentials to sign in each time you wish to access remote desktop.

7. Click on the **Corporate Desktop** to initiate the remote desktop session.



8. You will now log on to the remote desktop session.



For help and advice contact Technology Solutions

Mon - Fri: 8:00 AM - 6:00 PM (excluding public holidays)
Level 1 Building 4 (E4.146), 465 Elgar Road, Box Hill, VIC 3128
Level 4, Building B, Room B440, 253 Flinders Lane, Melbourne, VIC 3000
Level 1, Building B, Room LB.207, Jarlo Drive, Lilydale, VIC 3140
P 61 3 9286 9465