

MIA-81

COMMERCIAL LOUDSPEAKERS

Slim Compact Column Loudspeaker



PRODUCT OVERVIEW

MIA-81 is a an elegant, unique a compact design column loudspeaker, built in a single aluminium piece to avoid vibrations and mechanical stress. MIA-81 includes 8x1.5" drivers with an RMS rating of 40W and behave as a mini line array with the disposition of 8 drivers per column and the possibility of working in 16 Ω or 64 Ω by selecting them behind the logo without the need to remove the grille.

MIA-81 is available in black and white colour, is IP44 graded ready for outdoor applications. As a highlight, the included FLATY bracket allows the column to be mounted against the wall. FLATY is made of stainless steel which allows the height to be adjusted at any point along the length of the column.

KEY FEATURES

- Column passive loudspeaker for surface mounting.
- 8x1.5" woofers Mini In-line Array.
- Possibility of working in 16 Ω or 64 Ω by selecting them behind the logo without the need to remove the grille.
- Aluminium one-piece non resonant compact enclosure.
- Stack Output.
- FLATY bracket included for wall mounting. Made out of stainless-steel that permits adjusting the height at any point of the length of the column.
- Weather-protected with an IP44 rating.
- Available in black and white.
- [EASE files available.](#)



APPLICATIONS

- Retail
- Education
- Corporate
- Leisure
- Sports & Wellness
- Hospitality

TECHNICAL SPECIFICATIONS

MIA-81

SYSTEM		
	Effective Freq. Range ¹	175Hz-20kHz (-10dB)
	Coverage angle ²	235° x 58° (HxV)
	Power handling	40 W RMS / 160 W Peak
	Sensitivity ³	98 dB (1W/1m)
	Maximum SPL ⁴	114 dB continuous / 120 dB peak
	Recommended amplifier power	80W RMS
TRANSDUCERS		
	Ways	1-way full range
	Driver	8 x 1.5" Loudspeaker
	Nominal impedance	16Ω / 64Ω
PHYSICAL		
	Connection type	Double INPUT/LINK connector, Euroblock type
	Power type selector	Front selection by toggle switch
	Installation options	Surface / Wall mounting
	Environmental	IP44
	Enclosure material	Aluminium
	Grille material	Aluminium
	Grille fixing system	Side Insertion mount system
	Mounting system	Stainless Steel Wall Bracket
	Operating temperature	Min: -20°C ; -4°F Max: 70°C ; 158°F
	Operating humidity	<85% HR
	Storage temperature	Min: -20°C ; -4°F Max: 70°C ; 158°F
	Storage humidity	<90% HR
	Included accessories	FLATY bracket, 2x Euroblock connector
	Finished colour	White (RAL9003) or Black (RAL9005)
	Dimensions (WxHxD)	58 x 448 x 67 mm / 2.28 x 17.64 x 2.64 in.
	Weight	1.2 kg / 2.64 lb
	Pieces per box	1
	Shipping dimensions (WxHxD)	135 x 655 x 160 mm / 5.31 x 25.79 x 6.30 in.
	Shipping weight	1.9 kg / 4.19 lb

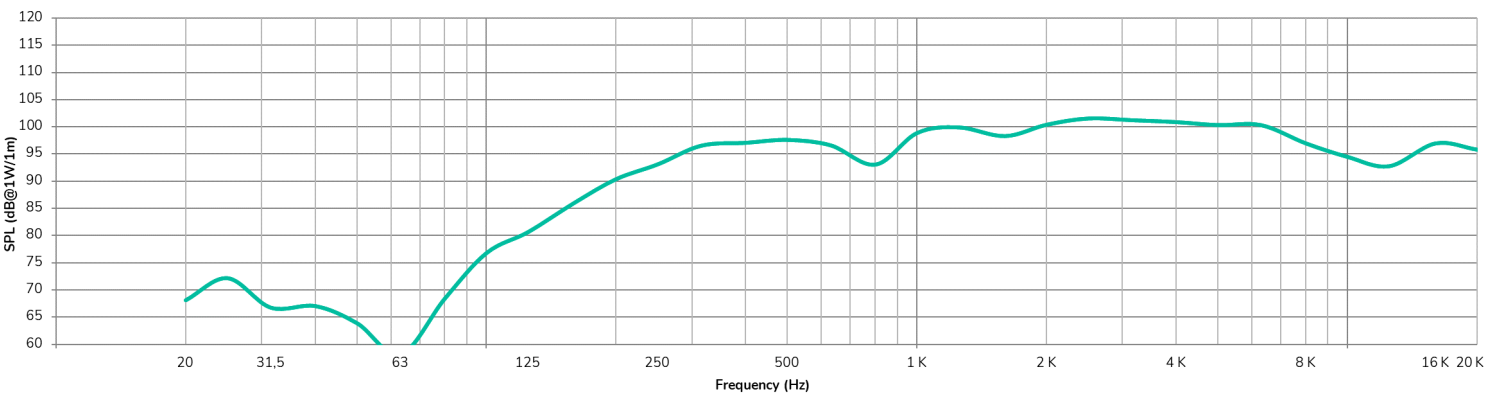
¹ below the sound pressure level at specified sensitivity

² 6dB below the sound pressure level than that at the direction of maximum level, Max. angle between 1 kHz and 4 kHz.

³ Measured on-axis, far field and referenced to 1 meter by inverse square law. Average from 100 Hz to 10 kHz.

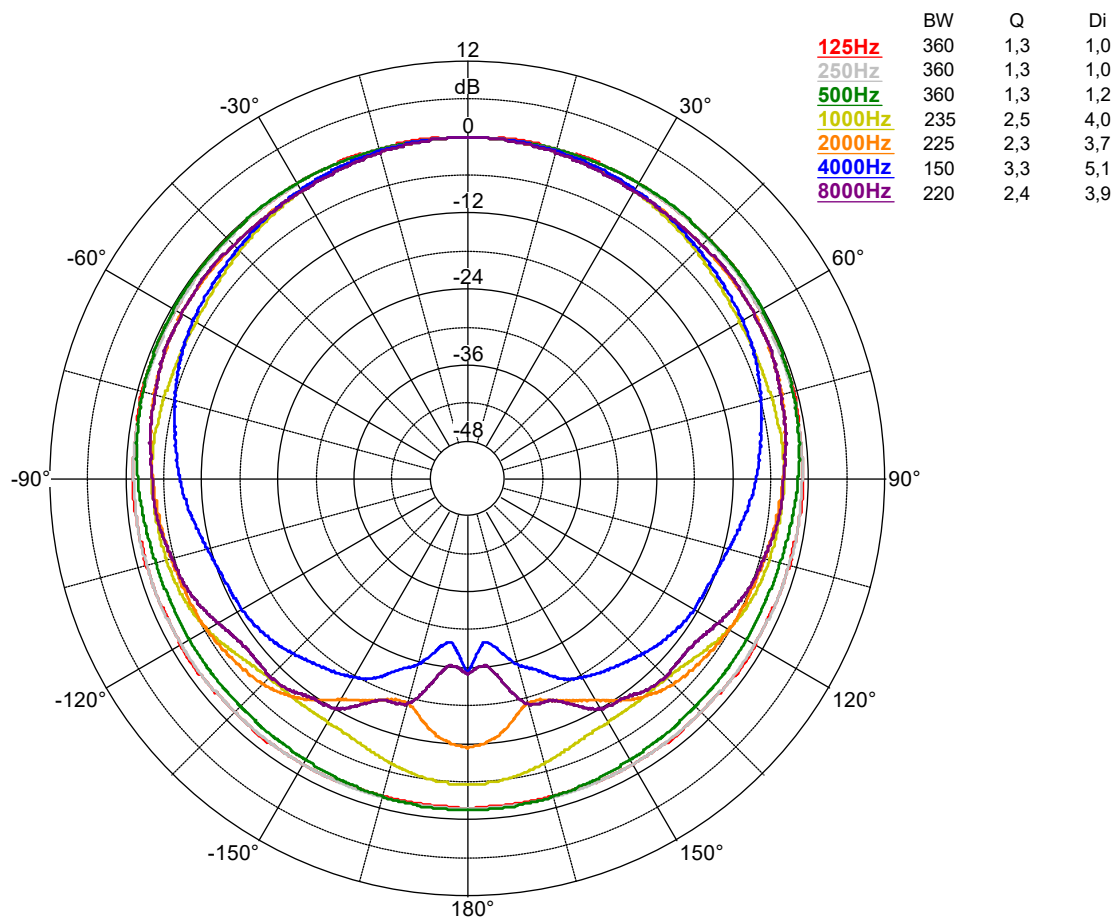
⁴ Calculated from sensitivity and power handling specifications, exclusive of power compression

FREQUENCY RESPONSE ON-AXIS

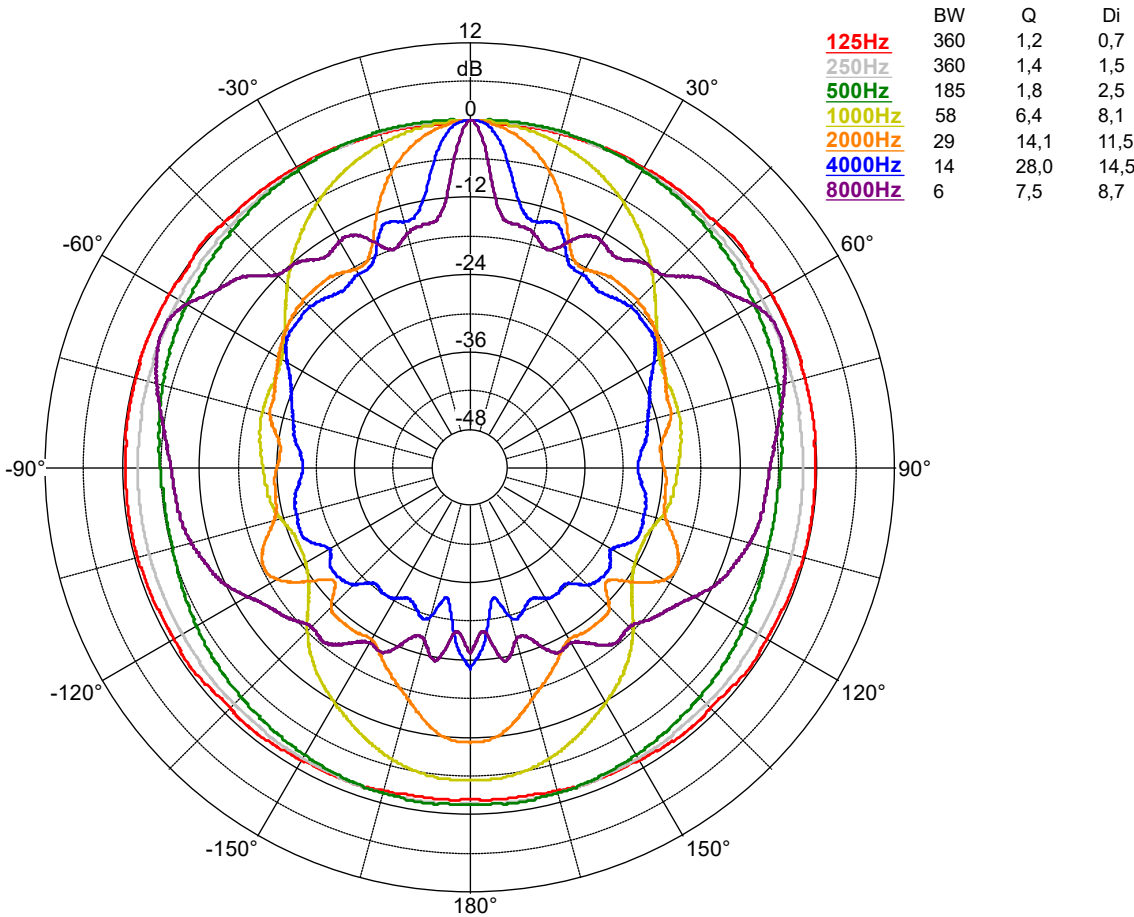


POLAR DIAGRAMS

HORIZONTAL



VERTICAL

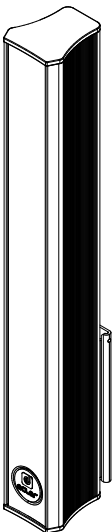
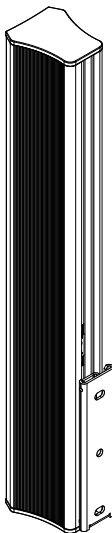
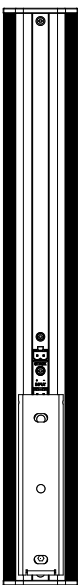
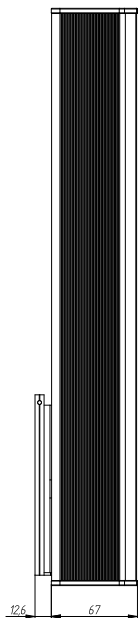
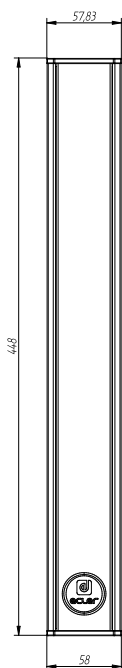
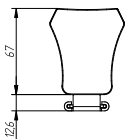


MECHANICAL DIAGRAM

All the measurements are in mm.



Ecler MIA-81 Mechanical Diagram



61-1122-0200

www.ecler.com

All the measurements are in mm

A&E SPECIFICATIONS

The loudspeaker shall be a 1-way full range surface mount column loudspeaker cabinet, incorporating 8x1.5" drivers. It shall have a power handling of 40 W RMS with a peak power handling of 160 W and the effective frequency range (± 10 dB) shall be from 175 Hz to 20 kHz. The sensitivity shall be 98 dB when measuring with an input signal of 1 Watt at a distance of 1 meter, while the maximum continuous sound pressure level shall be 114 dB.

The coverage angle shall be $235^{\circ} \times 58^{\circ}$ (HxV). The loudspeaker shall have a switch located behind the logo, which allows to modify its impedance between 16Ω or 64Ω without removing the aluminium front grille. It shall have a non-resonant enclosure constructed out of a single aluminium piece. It shall be IP44 rated and shall be able to install outdoors.

The front finishing shall be made with an overlapping front aluminium grill with a rotatable logo, giving a slim and elegant impression. It shall include a FLATY bracket that allows the column to be mounted against the wall, made out of stainless-steel that permits adjusting the height at any point of the length of the column, and 2x Euroblock connectors.

The column enclosure shall be 58 mm wide, 448 mm high and 67 mm deep and the weight shall not exceed 1.2 Kg.

The loudspeaker shall be the ECLER MIA-81.



All product characteristics are subject to variation due to production tolerances. **NEEC AUDIO BARCELONA S.L.** reserves the right to make changes or improvements in the design or manufacturing that may affect these product specifications.

For technical queries contact your supplier, distributor or complete the contact form on our website, in [Support / Technical requests](#).

Motors, 166-168 | 08038 Barcelona, Spain | Tel. (+34) 932238403 | information@ecler.com | www.ecler.com