



NORDIC NOTES GUITAR STRAP

Connie Rubsamen

Photos by Joe Coca unless otherwise noted

Project originally published in *Handwoven* March/April 2016

Wear your guitar in Scandinavian style! Inspired by Norwegian designs, this wide band features a pick-up warp float pattern.

NORDIC NOTES GUITAR STRAP

Connie Rubsamen

An inkle band in 3/2 pearl cotton makes a nice dense strap, and a 90-thread warp wove up to a perfect 2-inch width. This colorful design features a Norwegian pick-up pattern.

MATERIALS

TECHNIQUE Warp-faced pick-up.

EQUIPMENT Inkle loom, 2" weaving width; 45 heddles; 1 belt or band shuttle.

YARNS *Warp:* 3/2 Perle Cotton (100% mercerized cotton; 1,260 yd/lb; UKI), #16 Royal, 165 yd; #148 Caribbean, 75 yd; #110 Teal, 30 yd. *Weft:* 3/2 Pearl Cotton, #16 Royal, 40 yd.

OTHER SUPPLIES 1/2" double-fold bias tape in coordinating color; handsewing needle; matching sewing thread; 2 leather guitar strap ends; 1 slide buckle.

WARP LENGTH 89 ends 3 yd long (allows 18" for take-up, 10" for loom waste).

SETTS *Warp:* 45 epi. *Weft:* 7 ppi.

DIMENSIONS *Width on loom:* 2".

Woven length (measured under tension on the loom): 80". *Finished size:* 2" x 75".

PROJECT INSTRUCTIONS

1 Warp inkle loom with warp of 89 ends 3 yards long following the threading in Figure 1.

2 Wind a belt shuttle with Royal. Weave about 1/2" of plain weave to stabilize the band, then begin weaving pick-up pattern in the center section of the band following the pick-up chart in Figure 2 on the center 37 threads. (The border design will be formed by the plain-weave sheds.) Unlike a traditional weaving draft, this pattern is read from bottom to top (in the direction of weaving). Beat firmly to get 7 ppi and to get a clear and consistent design throughout the band. Continue the pickup pattern,

working the repeat until the band measures about 78 1/2", then work the final 6 rows to complete the pattern. Finish with 1/2" of plain weave to stabilize the band.

3 Cut the band from the loom and trim off the excess warp ends. Sew 1/2" double-fold bias tape to each end to secure the ends without too much bulk. Slide one end of the band onto the slide buckle and sew to form a small casing around the center bar. Next, slide on one of the leather tab

ends. Bring the other end of the band through the slide buckle again over the center bar. Check to make sure that the strap isn't twisted, and then attach the second leather tab end. *

RESOURCES

Torgenrud, Heather. *Norwegian Pick-Up Bandweaving*. Atglen, Pennsylvania: Schiffer, 2014.

<https://www.etsy.com/listing/87271810/guitar-strap-kit-do-it-yourself>



Figure 1. Inkle draft for strap

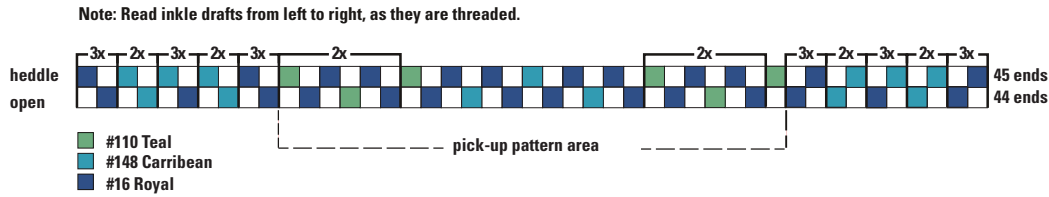
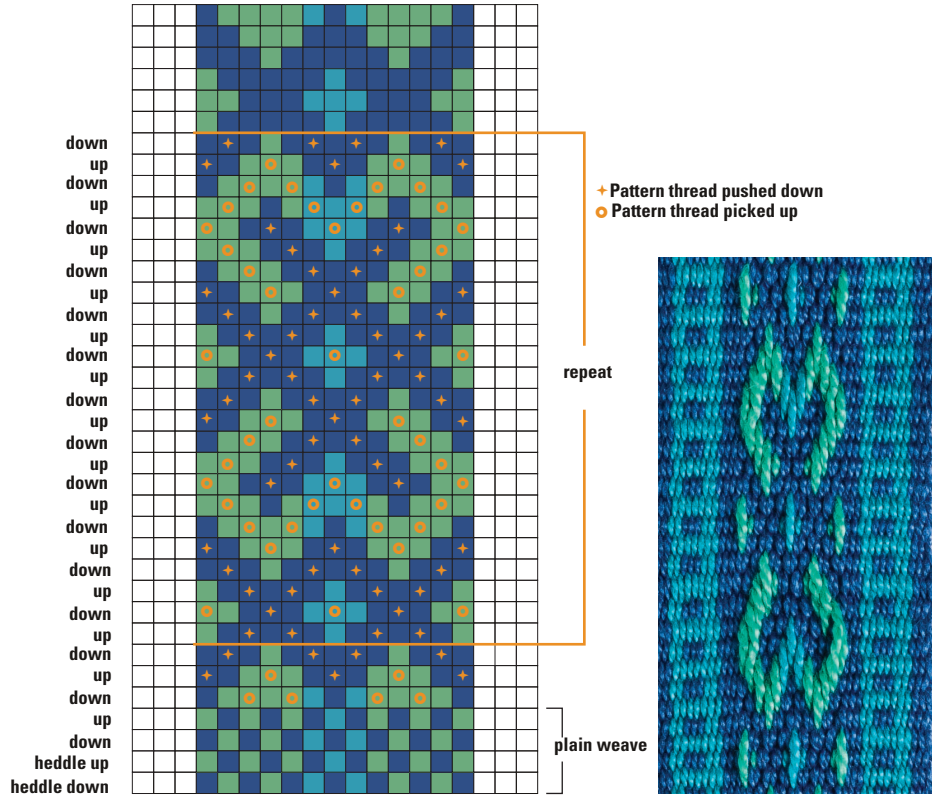


Figure 2. Pick-up pattern



TIPS

If you look at the threading for this style of inkle pick up, you will see that every “pattern” thread (in Teal or Caribbean) falls between 2 “background” threads (in Royal). These groups of three ends work as a unit and are represented as a single square in the chart.

When you see a square that indicates that you pick up a pattern thread, you will see a single (pattern) thread of Teal or Caribbean that is down between 2 raised threads of Royal. You will pick up the pattern thread and push down the 2 background threads that bracket the pattern thread.

When you see a square that indicates that you push down a pattern thread, you will see 2 threads of background (Royal) that are down with a raised pattern thread between them. You will pick up the 2 background threads while pushing down the pattern thread.

When you see a square that has no symbol, you will leave that group of warp threads where they are.

NOTE: This is an unusual take on this style of pick-up inkle weaving. In more traditional versions, the pattern threads would either be a heavier yarn or a doubled end.