



SNOWY OWL TABLE RUNNER

Jenny Sennott

Photos by Matt Graves unless otherwise noted

Project originally published in *Easy Weaving with Little Looms* Spring 2020

Color-and-weave and an owlish palette combine to create a plain-weave runner that only looks complicated. Weave it in a weekend and bring the north woods to your table.

SNOWY OWL TABLE RUNNER

Jenny Sennott

A draft named "Hedwig" in *The Gartner Manuscript* combined with Jenny's love of Harry Potter became the spark of inspiration for this color-and-weave runner. The snowy owl's feathers are much more than simply white: there are grays, tans, and black, and of course there are those golden talons and eyes.

RESOURCES

- Valk, Gene Elizabeth. *The Gartner Manuscript*. Cumberland, Maine: Linen, 2006.

MATERIALS

Type of Project: Rigid Heddle

STRUCTURE Plain weave with color-and-weave.

EQUIPMENT Rigid-heddle loom, 17" weaving width; 12-dent heddle; 2 boat shuttles; 6 bobbins.

YARNS **Warp:** 3/2 pearl cotton (1,260 yd/lb; UKI), #010 Gold and #007 Black, 32 yd each; #001 White, 104 yd; #141 Silver, 106 yd; #140 Safari and #019 Medium Grey, 64 yd each. **Weft:** 3/2 pearl cotton, #010 Gold and #007 Black, 8 yd each; #001 White, 88 yd; #141 Silver, 110 yd; #140 Safari and #019 Medium Grey, 16 yd each.

WARP LENGTH 201 ends 2 yd (72") long (allows 10" for take-up, 17½" for loom waste).

SETTS **Warp:** 12 epi. **Weft:** 11 ppi.

DIMENSIONS **Width in the heddle:** 16½". **Woven length:** (measured under tension on the loom) 44½". **Finished size:** (after wet-finishing) 15" x 37½".

PROJECT STEPS

1 Set up your loom for direct warping a length of 72" or wind a warp of 201 ends 72" long following the warp color order, Figure 1. Centering the warp for a weaving width of 16½", warp the loom using your preferred method. Note that the warp starts and ends in a slot.

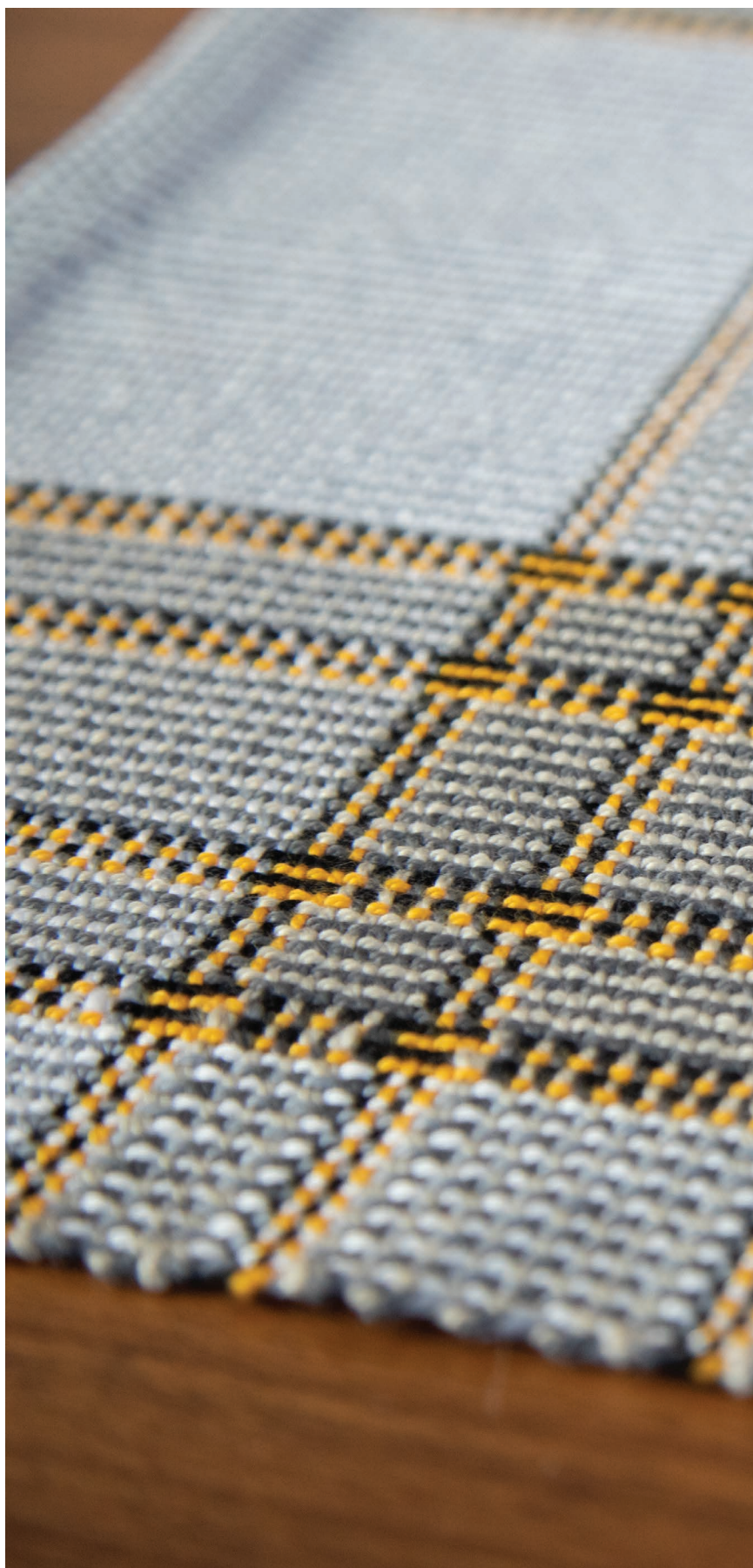
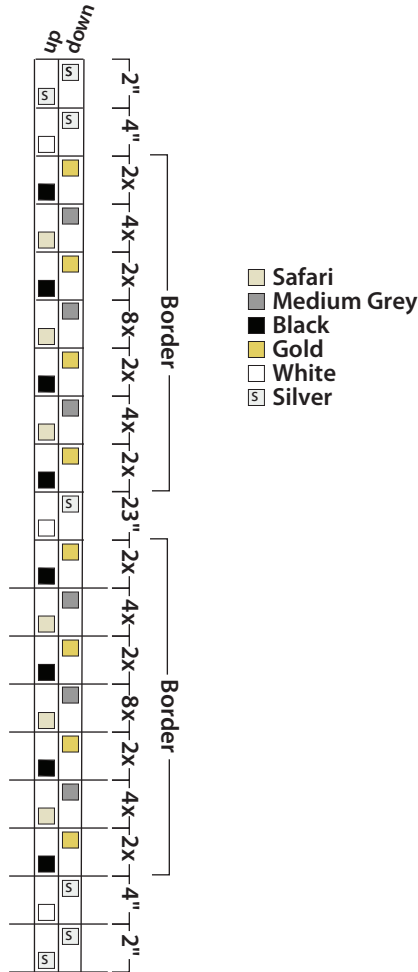


Figure 1. Warp Color Order

	8x	2x	4x	2x	8x	2x	4x	2x	36x	2x	4x	2x	8x	2x	4x	2x	8x
32			1		1		1				1		1		1		
32			1		1		1				1		1		1		
16		1		1		1		1		1		1		1		1	
16		1		1		1		1		1		1		1		1	
52	1								1								1
53	1	1							1								1
201 ends total																	

- Safari
- Medium Grey
- Black
- Gold
- White
- Ⓢ Silver

Figure 2. Weft Color Order



- Safari
- Medium Grey
- Black
- Gold
- White
- Ⓢ Silver

2 Wind 6 bobbins, one of each weft color. Spread the warp with scrap yarn.

3 Weave 2" with Silver for a hem. Beginning with Silver and the heddle in the down position, weave 4", alternating picks of Silver with picks of White. End with a pick of White and the heddle in the up position.

4 Weave the border following the weft color order, Figure 2.

5 Weave the center of the runner alternating Silver and White for 23", ending with a pick of White in the up position.

6 Weave the border again and then weave a band of Silver and White for 4" as you did at the beginning. Weave 2" of Silver for the hem.

7 Weave several picks of scrap yarn and remove the runner from the loom. Secure the edges by zigzagging. Machine wash in cool water with mild soap. Tumble dry. Press with a hot iron, folding the edges twice to create neat hems. Sew the hems by hand or machine stitch. *