



GOTHIC GLASS TABLE RUNNER

Jennifer E. Kwong

Photos by Matt Graves unless otherwise noted

Project originally published in *Easy Weaving with Little Looms* Summer 2024

Adorn your table with radiant hues inspired by the stained-glass windows in Gothic cathedrals, using the monk's belt technique for the bands of color. Unlike many pick-up patterns, a monk's belt pattern cannot be stored on a pick-up stick behind the heddle, but a heddle rod installed in front of the heddle solves this problem, allowing you to "store" the pattern shed between picks.



 RIGID HEDDLE
**GOTHIC GLASS
 TABLE RUNNER**
 Jennifer E. Kwong

RESOURCES

Casanova, Kelly. "How to Make a Heddle Rod on a Rigid Heddle Loom." YouTube video. February 20, 2016. [youtube.com/watch?v=nyNaq_Vx4eE](https://www.youtube.com/watch?v=nyNaq_Vx4eE).

Mitchell, Syne. "How to Set Up the Loom for Doup Leno." *Inventive Weaving on a Little Loom*, 196. North Adams, MA: Storey, 2015.

MATERIALS

STRUCTURE Monk's belt and plain weave.

EQUIPMENT Rigid-heddle loom, 12" weaving width; 12-dent heddle; 1 stick shuttle. **Note:** Have a 12.5-dent heddle? See the heddle conversion chart in the Reader's Guide at LittleLooms.com.

YARNS **Warp:** 8/4 cotton (1,690 yd/lb; Cotton Kings), #09 Black, 343 yd.

Tabby and plain-weave weft: 8/4 cotton, #09 Black, 296 yd. **Pattern weft:** Chroma twist worsted (70% super-wash wool/30% nylon; 218 yd/100 g ball; KnitPicks), Narwhal, Tiki, Lupine, and Fathoms, 40 yd each.

OTHER SUPPLIES 12" wooden dowel ($\frac{3}{8}$ " diameter or larger); smooth, strong cotton for heddles (8/4 cotton works well), 29 yd; pick-up stick or 12" ruler; masking tape.

WARP LENGTH 145 ends 85" long (allows 7" for take-up, 18" for loom waste; loom waste includes fringe).

SETTS **Warp:** 12 epi. **Weft:** 12 ppi in plain-weave sections, 24 ppi in monk's-belt section (12 ppi tabby, 12 ppi pattern).

DIMENSIONS **Width in the heddle:** 12 $\frac{1}{2}$ ".

Woven length: (measured under tension on the loom) 59 $\frac{3}{4}$ ". **Finished size:** (after wet-finishing) 10" x 55" plus 1" fringe at each end.

PROJECT STEPS

- 1 Make string heddles: Cut fifty-seven 18" lengths of strong cotton. Using a rigid heddle as a template, tie each length of cotton securely into a loop. Trim ends to about $\frac{3}{8}$ ".
- 2 Set up your loom for direct warping a length of 85", or wind a warp of 145 ends 85" long. Centering for a weaving width of 12 $\frac{1}{2}$ ", warp the loom using your preferred method. **Note:** You can use a 12" 12-dent heddle for this project by using both outer edges of the heddle as slots.
- 3 Wind a shuttle with Black 8/4 cotton for the plain-weave areas and tabby weft. Allowing 2" for fringe, spread the warp with scrap yarn.

NOTE ON STRING HEDDLES

Don't want to make 57 string heddles? Texsolv heddles can be used in place of cotton string heddles. You can get them precut or in a roll and do not need to tie them into loops to use them as string heddles. They're extra sturdy, so you can reuse them as string heddles for future projects as well.

- 4 Leaving a tail 4 times the width of the warp for hemstitching, weave 12 picks. Hemstitch in bundles of 4 using the long tail.
- 5 Continue weaving until you reach 5", ending with a down shed. Beat, but do not cut the weft.
- 6 Install the heddle rod:
 - a Put the heddle in neutral. Working in front of the rigid heddle and following the pick-up sequence and diagram in Figure 1, pick up the warp ends as indicated, storing them on a pick-up stick or ruler.

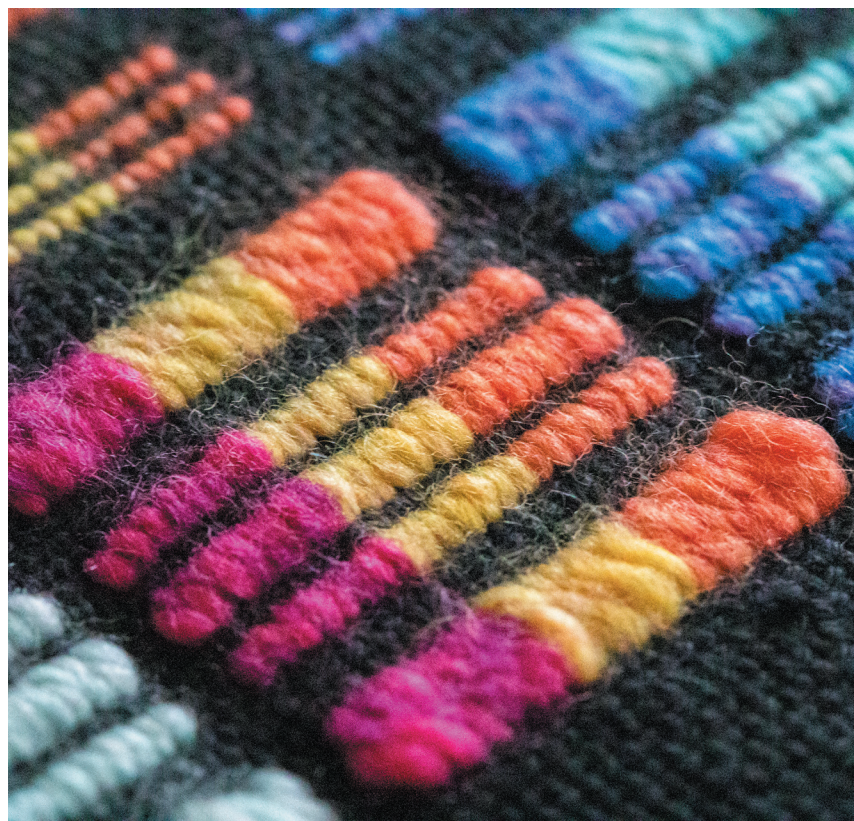


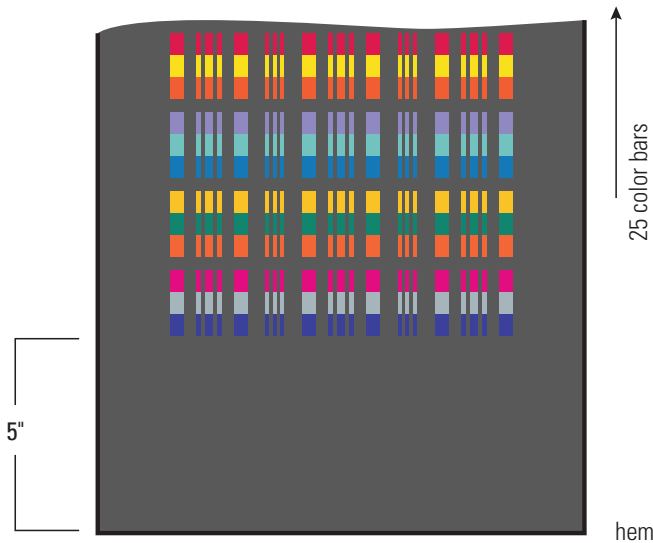
Figure 1. Pick-up pattern

Pick-up sequence: A B C B C B A

Up	5	2	3	2	5	1	1	1	
Down	18	3	1	1	3	6	1	1	6

Count slot and hole ends for pick-up.

Figure 2. Monk's belt placement



WEAVING TIPS

- Wind each of the pattern wefts into a center-pull ball until the color repeats. This allows you to choose a color from the inside or outside of the ball, giving you more color and value options.
- Ensure that each monk's belt block features one color of significantly different value. In other words, one of the three colors should be much lighter or much darker than the other two colors.
- A monk's belt block and plain-weave area together should measure about 2" long under tension. Measure the length of each color block and plain-weave area as you weave to ensure your beat is consistent.
- As you progress through the weaving, the outer 18 warp ends will loosen due to different take-ups. To increase the tension on the outer warp ends, place a dowel behind the heddle and over the ends. Add weight to the center of the dowel as required.



b Double-check your picked-up ends. Note that the design is symmetrical.

c Starting from an outermost warp end, fold a string heddle under the warp end and put the dowel through the loops of the folded heddle. Repeat for all the warp ends on the pick-up stick.

d Secure the string heddles to the rod with masking tape or a string secured to both ends of the dowel. Remove the pick-up stick.

7 Monk's belt blocks: Each block is made up of 21 picks of pattern weft alternating with Black tabby (plain weave in a pattern area) picks. The 21 picks of pattern weft consist of three randomly chosen colors, 7 picks of each (see Weaving Tips). See Figure 2 for placement.

a Choose a pattern weft. Cut a piece about 2 yd long. With the rigid heddle in neutral, lift the heddle rod and put the pattern weft through the resulting shed,

leaving a 3" weft tail. Beat; the heddle will push the string heddles forward. You may prefer to beat with a fork or tapestry beater. Notice that the pattern weft does not travel from selvedge to selvedge but is only within the width of the pattern area. The tabby picks will anchor the pattern weft.

b Place the heddle in the up position. Make sure the heddle rod is close to the rigid heddle. Weave across with the tabby weft in front of the string heddles (not between the string heddles and the rigid heddle). Beat.

c With the rigid heddle in neutral, lift the heddle rod, and put the pattern weft through the shed. Tuck the tail into this shed, overlapping by about 2". Leave the tail on the top surface (the top surface on the loom will be the underside of the finished piece). Beat.

d Place the heddle in the down position. Weave across with the tabby weft in front of the string heddles. Beat.

e Repeat this sequence, alternating the pattern and tabby wefts, changing the pattern weft color after 7 picks. Weave three colors, 7 picks each. When you reach the last pattern weft pick, wrap the weft around the outermost pattern warp and tuck it into the same shed, overlapping by about 2".

8 Weave 6 picks of plain weave with 8/4 cotton.

9 Weave 24 more monk's belt blocks, each separated by 6 picks of 8/4 cotton.

10 After the last block, weave 5" of plain weave using 8/4 cotton.

11 Cut the weft, leaving a tail 4 times the width of the weave.

Hemstitch in groups of 4.

12 Remove the piece from the loom, leaving 2" of unwoven warp at each end for fringe.

13 Wet-finish by soaking in hot tap water with mild detergent. Do not wring. Roll in a towel to remove excess moisture. Lay flat to dry.

14 Trim away pattern weft tails. Trim ends of fringe to 1". Steam to remove any wrinkles. *